

9-15-1969

# The Quill -- September 15, 1969

Roger Williams University

Follow this and additional works at: [http://docs.rwu.edu/the\\_quill](http://docs.rwu.edu/the_quill)



Part of the [Education Commons](#)

---

## Recommended Citation

Roger Williams University, "The Quill -- September 15, 1969" (1969). *The Quill*. Paper 112.  
[http://docs.rwu.edu/the\\_quill/112](http://docs.rwu.edu/the_quill/112)

This News Article is brought to you for free and open access by the Student Publications at DOCS@RWU. It has been accepted for inclusion in The Quill by an authorized administrator of DOCS@RWU. For more information, please contact [mwu@rwu.edu](mailto:mwu@rwu.edu).

# ROGER WILLIAMS COLLEGE CONVOCATION TO FEATURE

## ATTORNEY GENERAL — OMBUDSMAN



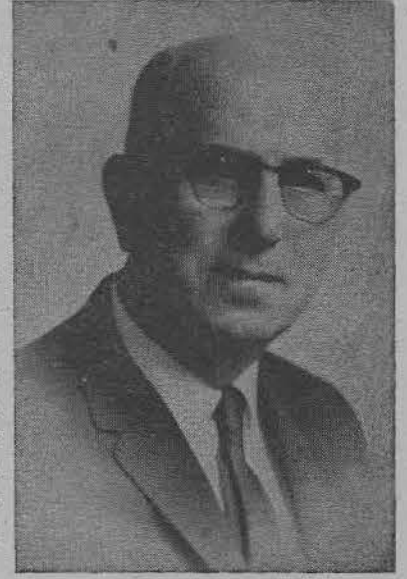
Attorney General DeSimone

Roger Williams College will begin its fiftieth year of operation in the city of Providence with a convocation Monday in the Beneficent Meeting House. Roger Williams first started in Providence in 1919 as a branch of Northeastern University, offering evening courses in law and finance. The program for the convocation will include remarks by Dr. Ralph E. Gauvey, college president; Frank Zannini, Dean of the college, Providence Campus; and Leonard Berk on behalf of the students.

The main address entitled "The Generation Gap" will be delivered by Dr. J. Harold G. Way, the college's Ombudsman. The program will also in-

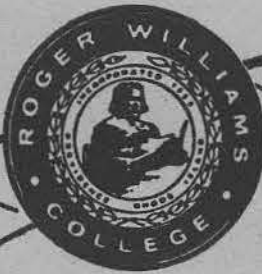
clude a special presentation by the Honorable Herbert F. DeSimone, Attorney General of the state of Rhode Island.

Following the convocation, class will begin for approximately 900 students in the business and engineering fields. The Providence campus of Roger Williams College will include an administration building at 266 Pine Street, a student center at the former Greek Orthodox Church on Pine Street, the Wtakins Building at 274 Pine Street, the second floor of the YMCA building at 160 Broad Street and a portion of the Armenian Euphrates Evangelical Church on Franklin Street in Providence.



Dr. J. Harold G. Way

# The Quill



THE BOOKSTORE  
WILL BE OPEN FROM  
8:30 - 8:00 ALL WEEK

TONY'S R. W. C. OPEN  
FROM 9:30 - 8:00

— Without the press . . . what is speech; without speech . . . what is freedom; without freedom . . . what is life?

VOL. IX, No. 1

Roger Williams College

September 15, 1969



Dean of Providence Frank Zannini

## Providence Outlined

Now that the registration for fall semester is essentially over, I hope that the students, the faculty and the administration will turn all of their energies and all of their resources toward making the Providence Campus of Roger Williams College a unique educational institution that is sensitive to human needs and a campus open to young people as a place that will afford them an opportunity to prepare themselves for a lifetime of complete fulfillment.

Throughout the summer, I have given thought to some of the things that we, at the College, should work together on so that we can accomplish all of our objectives. I would like to enumerate them for you, and I want to remind you that the list is open-ended, and I hope that it is amended from time to time by all groups of the College as we progress through the 1969-70 academic year. My guidelines are flexible and should not be considered rigid as their only purpose is for the

successful development of the Providence Campus of Roger Williams College.

Here are some of the things I would like to accomplish this year: As some of you upper classmen know, the results of a student poll indicated that the College should plan to establish majors in the Division of Business Administration. I hope that the Business Faculty and representatives from the student bodies will work together and introduce at least two majors that are consistent with the resources of the College and also consistent with the desires of the student body.

The introduction of majors is not simply an internal Colleg decision. When this decision is made, we must consider the community because if we furnish the community with graduates that they cannot employ; then our students will be neither happy nor successful and the College will not be serving its functions.

OUTLINE

Page 2

## Presidential Address

# The New Roger Williams College

This year we will begin a new phase in the development of Roger Williams College. We now have two separate campuses which make up the complex of the college. Today we officially open the academic year at our metropolitan-based campus in Providence. The primary purpose of this campus is to serve the needs of those students who have chosen professional studies as a major area of concentration.

Later on this month our new Bristol Campus offering major areas in the liberal arts, will have its initial opening.

In the spring we will have the opportunity of being part of the Commencement activities for the first graduation at the College during which students will be awarded the baccalaureate degree.

Now that the Bristol Campus is all but finished, the administration of the college is turning its attention to the locating of a site for a permanent professional studies campus somewhere in this metropolitan area. It is our goal to build a permanent metropolitan campus which is as beautiful and functional as any college campus existing today.

The governing board of the college has signified a commitment to the operation of the two-campus concept. Authorizing such a concept, however, and actually building it are two different matters. The operation of a two-campus concept depends on the cooperation of all members of the college community on both campuses.

There are numerous challenges which we will all have to face between now and the Commencement in June. All members of the college community will be called upon this year to help in defining new policies, new approaches to the better reorganization of the various structures that help make up the entity which we call the college.

A variety of committees have been appointed and many of these will have student representation. In addition to student involvement on these committees, we will be challenged with facing a new dimension of such old problems involving student



College President Dr. Ralph Gauvey

communication through the Quill, the Student Council, and other organizations.

We will have to rely upon students to recommend courses of action which will provide solutions to these old problems in the new context of a two-campus system. Should there be one newspaper for campuses, or would there be a newspaper on each campus? Should there be one Student Council for the entire college or should there be a Student Council for each campus?

There are many other considerations involving students as well as all other members of the College community in attempting to evolve viable solutions for these problems. We must, however, remember at all times that the two-campus system is an entity which we call Roger Williams College. It is essential that the Bristol Campus and the Providence Campus are the same Roger Williams College even though their educational focus may be different.



# PROTECTION

It is time to predict just what could occur during the next year at Roger Williams College. During the problems of transition, the student must bear the full effect of what I am about to devour. It is appropriate to discuss these projections for the first edition of the "Quill."

**What Students should observe:**

Observe elections in the fall semester regarding class offices, student government elections, and elections to the "all college council positions. Though these positions seem powerless from a student standpoint, the deciding factor of such power can be only determined by students themselves. Once students tend to become involved with the "process," they immediately realize why administrators cannot give overnight answers. I predict that such involvement for the sake of recognition, and not change, shall once again repeat itself, as it has in the past. With this in mind, it would be deemed appropriate to demand election procedures, elec-

tion days, and clarification of the issues involved at both campuses. There should be rigorous campaigning on both campuses for these positions where all factions should be heard (conservative or liberal). If students can organize rationally, there is reason for optimism in this area.

**What the faculty should observe:**

This is an area which truly needs attention. Ironically, it is the faculty who motivate students at Roger Williams College, or at least it has appeared as such in the past. Within the past year, the faculty has appeared afraid to unite together on issues involving student participation on a broader scale for fear of possible impeachment from administration hierarchy. A possible exception to what I speak of will evidently show itself within the professional studies division. This faculty will prove itself to be so much closer with students, there eventually will be an established rapport within this community.

## Outline

(Continued from Page 1)

Related to this, is the fact that many students who attend Roger Williams College are dependent upon part-time jobs to earn money to continue their education. I always considered this a very difficult burden to place on the student because the demands of the classroom are such that a student cannot effectively work and go to school at the same time. When this is the case, something must suffer and I believe the student makes the classroom assignments suffer. Therefore, I am a proponent of the Cooperative Education, a plan whereby a student can devote full time to both work and study. Business Administration students will be afforded the opportunity to gain first-hand professional experience on the job while, at the same time, be able to earn money to help defray the cost of the College expenses. In short, the College will initiate a cooperative education plan for Business students who are now enrolled in the Fall semester and who may want to work during the Spring semester.

If you started attending Roger Williams College two years ago, you will notice that there has been a complete change in equipment available for you to use as a student. In our planning, we know that the student learning is enhanced when there is adequate supporting laboratory equipment. During the summer, many faculty members have spent endless hours researching to find equipment suitable to support the offerings at Roger Williams College.

During the last two years Roger Williams College has moved from a junior to a senior college and the Providence Campus has introduced programs in Business Administration, Engineering, Industrial Technology at both the Baccalaureate and Associate Degree level. This has been a major and a significant change in the progress and direction of Roger Williams College. We are now faced with the fact that we have to present ourselves for accreditation as a four-year institution. The Providence Campus will establish committees which will include both faculty and students and, in addition, the College will engage consultants from

our neighboring accredited universities, so that we may plot the path to follow to attain accreditation within the shortest possible time span. Of particular interest to the Business and Industrial Technology students is the fact that the College has just entered into an agreement to purchase a new computer. During the year, plans will move ahead to utilize the computer to support learning experiences in the classroom. Roger Williams College has not been on the recruiting lists for many of the large industrial complexes and the federal government, but now that we are offering the Baccalaureate program, we will establish a placement center to assist the graduates in finding employment throughout our nation. We may combine this office with that of the cooperative education so that we can establish community advisory committees and organizations to support us in our quest to find suitable employment for all of our graduates.

# Evening Division To Offer Bachelors

More than 50 courses in business, engineering and liberal arts will be offered during the fall semester in the evening division of Roger Williams College at the Providence campus.

Registration is currently underway at 266 Pine St., Providence, and classes will begin September 15, according to Frank Zannini, Dean of the College, Providence campus.

Students may receive credit in the evening college towards a Bachelor of Science degree in construction technology, industrial technology and business administration. There are also programs leading to an associate degree in architectural and construction technology, electrical engineering technology, mechanical engineer-

ing technology and business administration.

Certificate and non-degree programs are offered, including a course in elementary algebra and geometry for those with a mathematical deficiency.

The college required that degree candidates have completed high school or have an equivalency diploma. Special students must have sufficient prerequisites for a specific course but may take courses without a high school diploma.

Roger Williams, previously a junior college, started its senior division last fall and will award its first baccalaureate degrees in the spring of 1970. Classes will run from 6:45 to 9:30 p.m.

For further information contact Mr. Cartwright, Evening Director.

## Hartford Park Today



### The Quill

MANAGING BOARD

Published Mondays except on holidays and/or vacations. Business office 266 Pine St., Providence, R. I. 02903. Telephone 274-2200 ext. 65 (10:00-4:00).

## Q-MASTER'S

BILLIARDS & SNACK BAR

Cor. of Church & Pine St.

PAWT. BUSINESS EXIT OFF 95

OPEN DAILY 12 NOON

PONTIACS

JEEPS

USED CARS

Come in and See

## MARC H. ROSENBERG

CLASS OF 1970

AT

STEINGOLD PONTIAC

766 Broadway, Pawtucket, R. I.

723-4700

## GIVE A DAMN!!

All students interested in working for the Newspaper should attend free period. Coffee an' will be served.

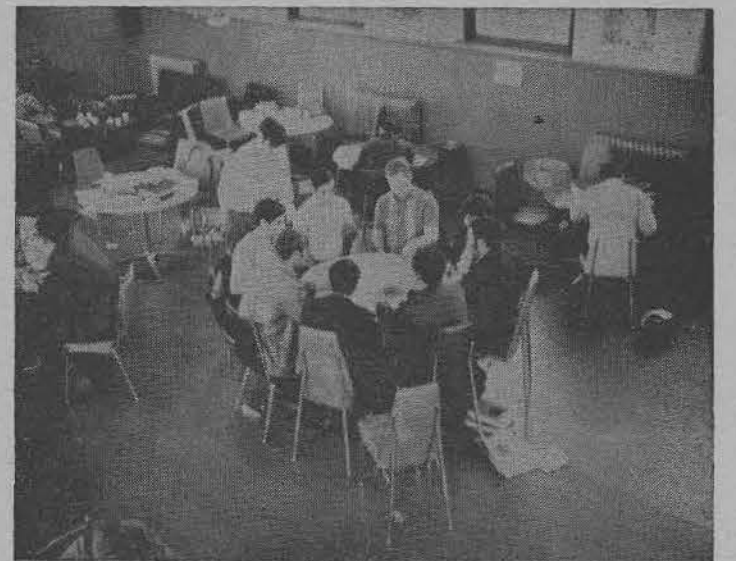
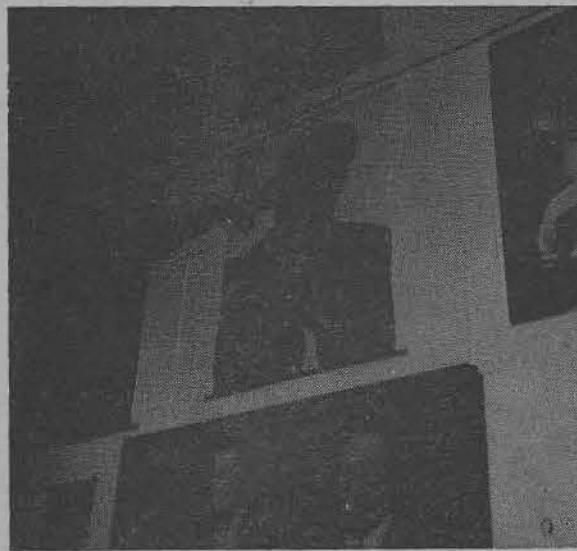
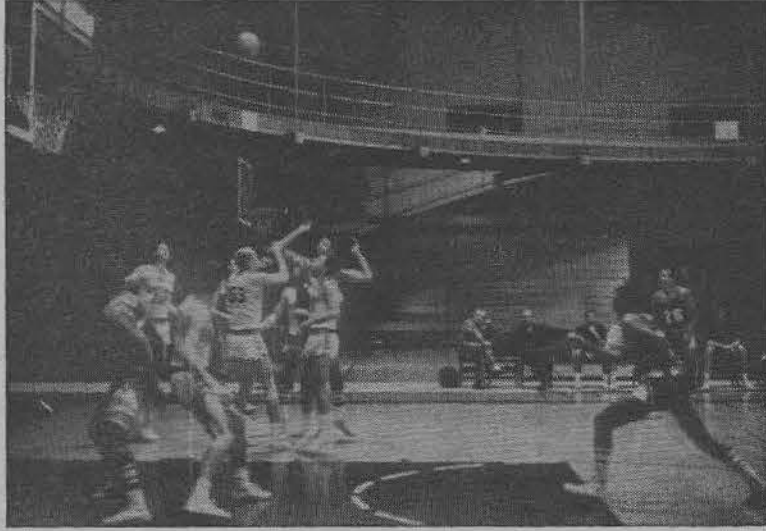
period. Coffee and will be served.

There must be more than TWO STUDENTS on this Campus who give a good — — — —.

WILLY



# "TRY TO REMEMBER.... A YEAR'S SEPTEMBER...AND FOLLOW...FOLLOW..."







## Piper Returns

For the second year a private concern, The Book Piper, will be operating the campus book store. It's location is the first floor of the student center, maintaining hours of 8:30-8:00 for the week.

Available at Piper besides the obvious will be college emblems, posters, engineering and business supplies, novelties, and a variety of clothing apparel.

# HAWKS PREPARE

The Roger William College varsity soccer team is currently practicing for its upcoming season. Coach William Forsyth reports that upwards of 25 students are now participating.

Although using the facilities of Colts Park in Bristol, team membership is open to students of both Providence and Bristol.

SOCCKER 1969

Coach: WILLIAM FORSYTH

Saturday, September 13 — 1 P.M. — at Barrington College (Round Robin with Dean)

Saturday, September 23 — 3 P.M. — at Providence College

Tuesday, September 30 — 4 P.M. — at Stonehill College

Friday, October 3 — 3 P.M. — at Belknap College

Tuesday, October 14 — 3 P.M. — Home Franklin Pierce College

Friday, October 24 — 3 P.M. — Home Belknap College

Tuesday, October 28 — 3 P.M. — at Franklin Pierce College



## TONY'S R. W. C. SNACK BAR

### NOTICES

**PUKKA MAGAZINE:** new creative arts quarterly. Interested artists, writers or subscribers write Box 56, Kingston, R. I. 02881.

**PARKING SPACES:** limited spaces available. Inquire faculty building.

**BOOKSTORE:** this week 8:30-8:00.

**CROSS-COUNTRY SOCCER:** interested students should contact Coach Drennan in the athletic office, Broad St.

**SNACKBAR:** Hours 7:30-8:00.

Willy

To the student body,

TAKE YOUR  
APATHY AND

