

2008

# Division of Research and Economic Development Monthly Report for November 2008

URI Division of Research and Economic Development

Follow this and additional works at: [http://digitalcommons.uri.edu/researchecondev\\_reports](http://digitalcommons.uri.edu/researchecondev_reports)

---

## Recommended Citation

URI Division of Research and Economic Development, "Division of Research and Economic Development Monthly Report for November 2008" (2008). *Reports (Research and Economic Development)*. Paper 20.  
[http://digitalcommons.uri.edu/researchecondev\\_reports/20](http://digitalcommons.uri.edu/researchecondev_reports/20)

This Periodical is brought to you for free and open access by the Division of Research and Economic Development at DigitalCommons@URI. It has been accepted for inclusion in Reports (Research and Economic Development) by an authorized administrator of DigitalCommons@URI. For more information, please contact [digitalcommons@etal.uri.edu](mailto:digitalcommons@etal.uri.edu).

**Table 1. Proposals processed by the Office of Sponsored Projects Review FY05 through November FY09**

Month	FY05				FY06			
	Number		Amount Requested		Number		Amount Requested	
	Count	Cum. Ct.	Amount	Cum. Amt.	Count	Cum. Ct.	Amount	Cum. Amt.
July	62	62	\$26,930,444.55	\$26,930,444.55	46	46	\$7,514,515.80	\$7,514,515.80
August	63	125	\$14,421,517.17	\$41,351,961.72	67	113	\$19,291,514.26	\$26,806,030.06
September	43	168	\$29,813,371.75	\$71,165,333.47	36	149	\$17,398,035.21	\$44,204,065.27
October	62	230	\$22,735,102.95	\$93,900,436.42	70	219	\$32,289,956.96	\$76,494,022.23
November	50	280	\$11,754,653.09	\$105,655,089.51	44	263	\$12,379,412.94	\$88,873,435.17
December	39	319	\$7,748,671.23	\$113,403,760.74	37	300	\$11,624,742.10	\$100,498,177.27
January	66	385	\$22,643,875.76	\$136,047,636.50	58	358	\$26,391,464.30	\$126,889,641.57
February	70	455	\$17,447,593.75	\$153,495,230.25	60	418	\$16,648,336.00	\$143,537,977.57
March	66	521	\$26,874,759.18	\$180,369,989.43	53	471	\$14,082,010.15	\$157,619,987.72
April	54	575	\$12,473,776.00	\$192,843,765.43	43	514	\$5,937,081.51	\$163,557,069.23
May	68	643	\$25,682,757.62	\$218,526,523.05	65	579	\$23,262,190.18	\$186,819,259.41
June	67	710	\$27,325,443.99	\$245,851,967.04	55	634	\$13,874,399.99	\$200,693,659.40
<b>Total</b>	<b>710</b>	<b>710</b>	<b>\$245,851,967.04</b>	<b>\$245,851,967.04</b>	<b>634</b>	<b>634</b>	<b>\$200,693,659.40</b>	<b>\$200,693,659.40</b>

Month	FY07				FY08				FY09			
	Number		Amount Requested		Number		Amount Requested		Number		Amount Requested	
	Count	Cum. Ct.	Amount	Cum. Amt.	Count	Cum. Ct.	Amount	Cum. Amt.	Count	Cum. Ct.	Amount	Cum. Amt.
July	47	47	\$20,603,130.99	\$20,603,130.99	54	54	\$33,842,834.37	\$33,842,834.37	57	57	\$33,147,668.28	\$33,147,668.28
August	47	94	\$16,827,319.64	\$37,430,450.63	48	102	\$18,649,661.71	\$52,492,496.08	54	111	\$33,062,650.43	\$66,210,318.71
September	37	131	\$13,452,282.90	\$50,882,733.53	39	141	\$6,908,530.31	\$59,401,026.39	46	157	\$14,655,235.21	\$80,865,553.92
October	78	209	\$21,421,348.77	\$72,304,082.30	61	202	\$19,838,573.08	\$79,239,599.47	64	221	\$14,065,473.80	\$94,931,027.72
November	52	261	\$12,236,742.00	\$84,540,824.30	46	248	\$10,043,051.00	\$89,282,650.47	56	277	\$32,319,218.20	\$127,250,245.92
December	39	300	\$9,375,521.40	\$93,916,345.70	49	297	\$19,600,544.28	\$108,883,194.75				
January	56	356	\$15,832,150.81	\$109,748,496.51	53	350	\$14,342,315.04	\$123,225,509.79				
February	68	424	\$41,778,787.00	\$151,527,283.51	63	413	\$25,700,702.83	\$148,926,212.62				
March	57	481	\$24,295,050.10	\$175,822,333.61	35	448	\$11,825,803.96	\$160,752,016.58				
April	36	517	\$5,363,201.08	\$181,185,534.69	63	511	\$29,523,641.59	\$190,275,658.17				
May	68	585	\$25,343,205.37	\$206,528,740.06	63	574	\$23,450,049.82	\$213,725,707.99				
June	75	660	\$27,241,525.21	\$233,770,265.27	64	638	\$25,890,560.06	\$239,616,268.05				
<b>Total</b>	<b>660</b>	<b>660</b>	<b>\$233,770,265.27</b>	<b>\$233,770,265.27</b>	<b>638</b>	<b>638</b>	<b>\$239,616,268.05</b>	<b>\$239,616,268.05</b>	<b>277</b>	<b>277</b>	<b>\$127,250,245.92</b>	<b>\$127,250,245.92</b>

Figure 1a. Cumulative totals of numbers of proposals submitted FY05 through November FY09

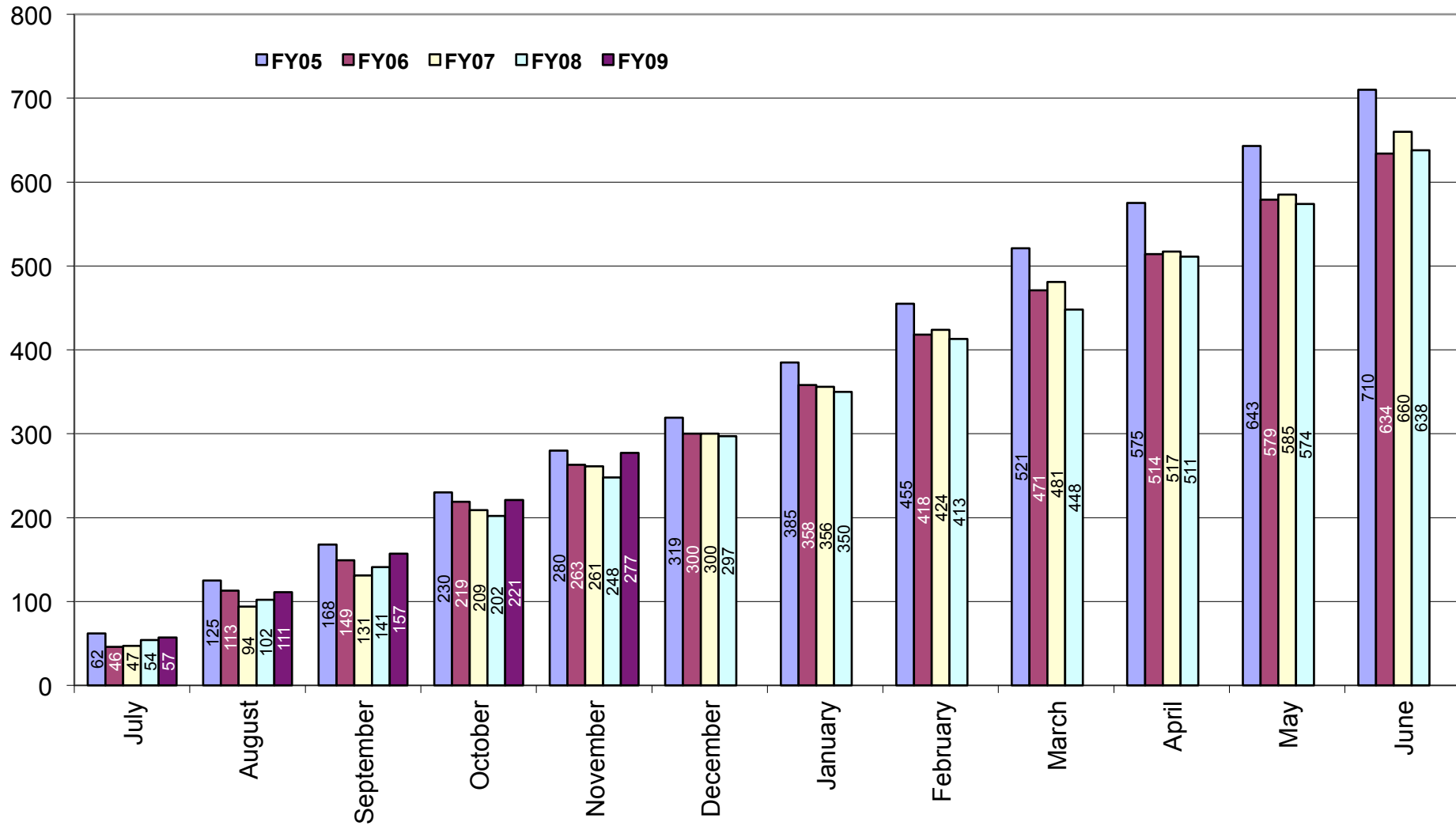
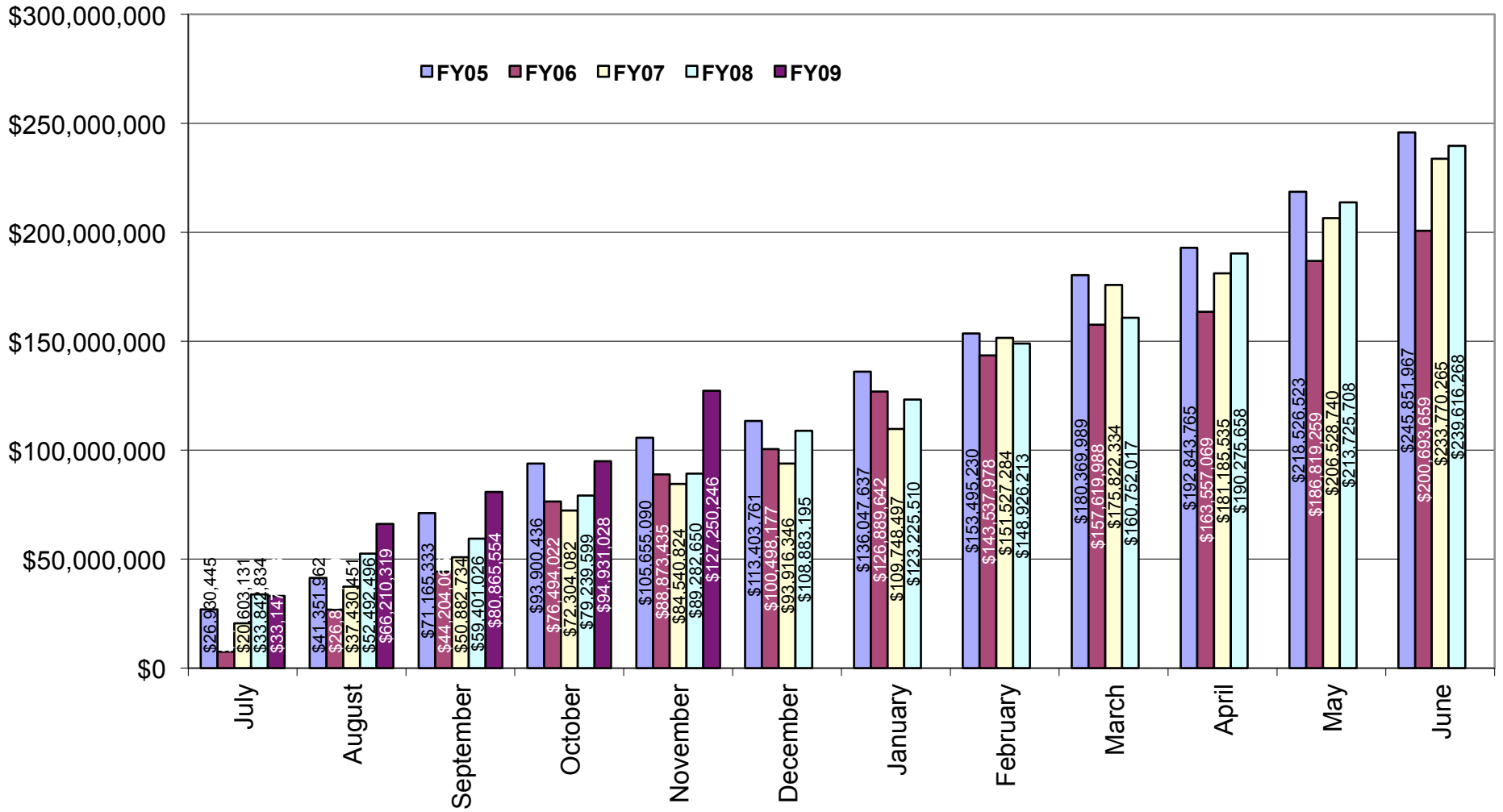


Figure 1b. Cumulative totals of proposal amounts requested FY05 through November FY09



**Table 2. Awards processed by the Office of Sponsored Projects Review FY05 through November FY09**

Month	FY05				FY06			
	Number		Amount Awarded		Number		Amount Awarded	
	Count	Cum. Ct.	Amount	Cum. Amt.	Count	Cum. Ct.	Amount	Cum. Amt.
July	20	20	\$5,911,437.00	\$5,911,437.00	36	36	\$8,184,631.73	\$8,184,631.73
August	37	57	\$4,586,777.17	\$10,498,214.17	51	87	\$8,884,672.35	\$17,069,304.08
September	39	96	\$5,225,993.59	\$15,724,207.76	46	133	\$5,812,274.19	\$22,881,578.27
October	54	150	\$7,405,830.22	\$23,130,037.98	53	186	\$11,310,965.90	\$34,192,544.17
November	23	173	\$2,986,893.00	\$26,116,930.98	37	223	\$6,414,477.00	\$40,607,021.17
December	27	200	\$3,350,107.00	\$29,467,037.98	22	245	\$3,041,531.55	\$43,648,552.72
January	29	229	\$2,856,379.98	\$32,323,417.96	35	280	\$2,476,893.00	\$46,125,445.72
February	20	249	\$1,320,451.04	\$33,643,869.00	21	301	\$3,290,780.00	\$49,416,225.72
March	56	305	\$8,295,672.75	\$41,939,541.75	34	335	\$7,789,588.25	\$57,205,813.97
April	32	337	\$4,096,237.88	\$46,035,779.63	31	366	\$3,782,080.00	\$60,987,893.97
May	28	365	\$3,285,917.20	\$49,321,696.83	36	402	\$5,050,148.27	\$66,038,042.24
June	60	425	\$10,994,037.43	\$60,315,734.26	38	440	\$7,410,074.73	\$73,448,116.97
<b>Total</b>	<b>425</b>	<b>425</b>	<b>\$60,315,734.26</b>	<b>\$60,315,734.26</b>	<b>440</b>	<b>440</b>	<b>\$73,448,116.97</b>	<b>\$73,448,116.97</b>

Month	FY07				FY08				FY09			
	Number		Amount Awarded		Number		Amount Awarded		Number		Amount Awarded	
	Count	Cum. Ct.	Amount	Cum. Amt.	Count	Cum. Ct.	Amount	Cum. Amt.	Count	Cum. Ct.	Amount	Cum. Amt.
July	44	44	\$3,630,455.25	\$3,630,455.25	20	20	\$2,909,307.42	\$2,909,307.42	24	24	\$2,141,955.29	\$2,141,955.29
August	43	87	\$4,738,246.38	\$8,368,701.63	44	64	\$7,784,335.67	\$10,693,643.09	48	72	\$8,844,375.00	\$10,986,330.29
September	31	118	\$7,322,287.00	\$15,690,988.63	51	115	\$5,958,412.96	\$16,652,056.05	52	124	\$20,010,083.68	\$30,996,413.97
October	47	165	\$7,808,245.88	\$23,499,234.51	47	162	\$6,965,281.97	\$23,617,338.02	40	164	\$3,484,436.41	\$34,480,850.38
November	35	200	\$3,765,622.92	\$27,264,857.43	25	187	\$2,868,646.00	\$26,485,984.02	30	194	\$7,639,964.48	\$42,120,814.86
December	28	228	\$5,077,394.86	\$32,342,252.29	29	216	\$2,706,955.70	\$29,192,939.72				
January	27	255	\$2,070,155.00	\$34,412,407.29	29	245	\$2,669,738.69	\$31,862,678.41				
February	29	284	\$3,346,724.45	\$37,759,131.74	24	269	\$2,253,601.01	\$34,116,279.42				
March	39	323	\$3,982,337.70	\$41,741,469.44	27	296	\$6,247,390.82	\$40,363,670.24				
April	29	352	\$4,053,313.60	\$45,794,783.04	42	338	\$5,655,452.97	\$46,019,123.21				
May	31	383	\$7,489,552.71	\$53,284,335.75	39	377	\$3,810,983.48	\$49,830,106.69				
June	54	437	\$8,974,656.16	\$62,258,991.91	57	434	\$13,904,362.84	\$63,734,469.53				
<b>Total</b>	<b>437</b>	<b>437</b>	<b>\$62,258,991.91</b>	<b>\$62,258,991.91</b>	<b>434</b>	<b>434</b>	<b>\$63,734,469.53</b>	<b>\$63,734,469.53</b>	<b>194</b>	<b>194</b>	<b>\$42,120,814.86</b>	<b>\$42,120,814.86</b>

Figure 2a. Cumulative totals of numbers of awards received FY05 through November FY09

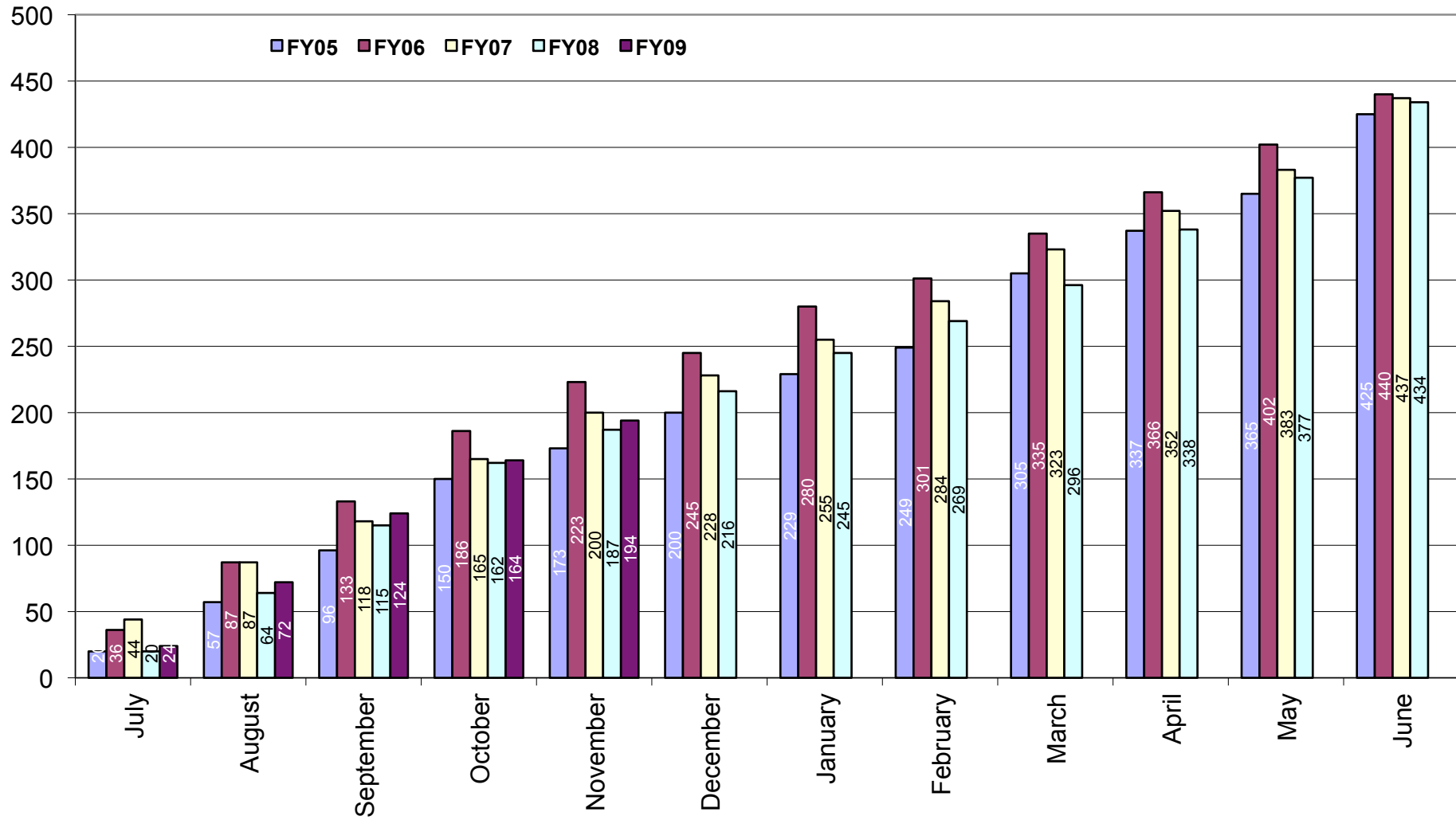
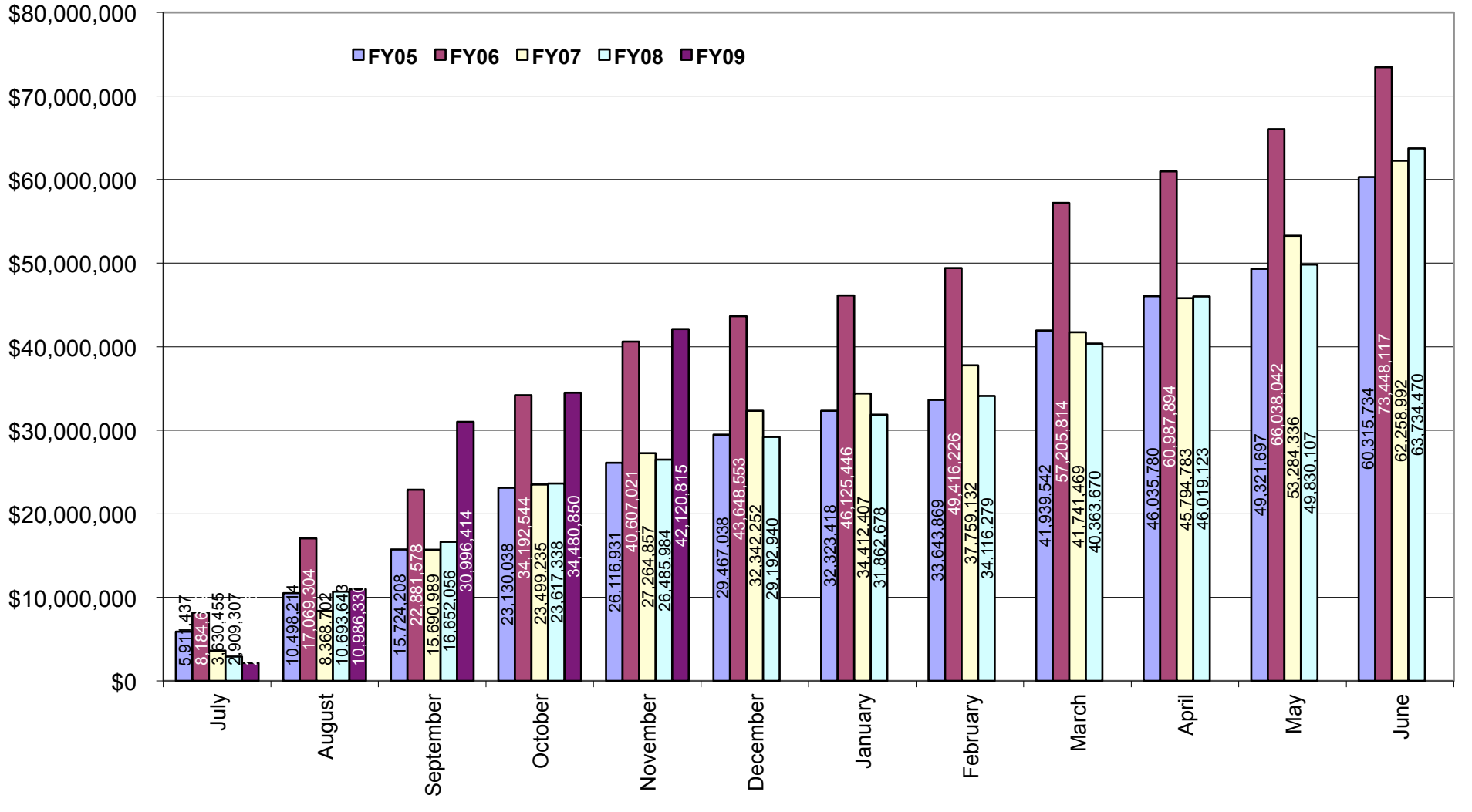


Figure 2b. Cumulative totals of award amounts received FY05 through November FY09



**Table 3. Summary of awards received by administrative and academic units FY05 through November FY09**

	<b>FY05</b>	<b>FY06</b>	<b>FY07</b>	<b>FY08</b>	<b>FY09 YTD</b>	<b>Totals</b>
<b>Administrative</b>						
PRESIDENT'S OFFICE	\$1,970,033.00	\$1,883,412.00	\$356,399.00	\$1,328,095.20	\$93,898.00	\$5,631,837.20
PROVOST	\$168,040.20	\$119,951.40	\$121,548.40	\$142,066.00	\$0.00	\$551,606.00
VP, ADMINISTRATION	\$20,000.00	\$92,325.00	\$0.00	\$0.00	\$1,931,783.00	\$2,044,108.00
VP, RESEARCH & ECON DEV	\$195,130.50	\$495,407.50	\$131,299.00	\$0.00	\$125,718.00	\$947,555.00
VP, STUDENT AFFAIRS	\$401,336.00	\$601,203.29	\$652,222.00	\$287,357.80	\$309,526.29	\$2,251,645.38
<b>Academic</b>						
ARTS & SCIENCES	\$6,035,828.66	\$7,824,205.64	\$7,960,353.47	\$12,765,590.25	\$5,846,877.74	\$40,432,855.76
BUSINESS ADMINISTRATION	\$260,728.00	\$67,119.21	\$0.00	\$0.00	\$10,211.60	\$338,058.81
CONTINUING EDUCATION	\$2,614.00	\$14,515.00	\$0.00	\$0.00	\$0.00	\$17,129.00
ENGINEERING	\$3,161,778.53	\$7,504,080.77	\$4,744,073.66	\$4,525,285.47	\$2,150,041.50	\$22,085,259.93
ENVIRONMENT & LIFE SCIENCES	\$10,332,061.70	\$13,830,497.57	\$13,678,422.86	\$9,507,339.56	\$13,776,399.93	\$61,124,721.62
GRADUATE SCHOOL	\$15,000.00	\$0.00	\$0.00	\$0.00	\$0.00	\$15,000.00
HUMAN SCIENCE & SERVICES	\$8,089,985.46	\$4,465,380.40	\$6,394,476.43	\$6,407,781.91	\$601,867.00	\$25,959,491.20
NURSING	\$485,073.00	\$919,777.55	\$835,971.48	\$927,796.54	\$647,877.30	\$3,816,495.87
OCEANOGRAPHY	\$22,465,138.49	\$26,282,651.39	\$20,520,548.16	\$20,999,179.82	\$13,644,992.50	\$103,912,510.36
PHARMACY	\$6,658,880.72	\$9,283,525.25	\$6,779,109.45	\$6,744,604.98	\$2,981,622.00	\$32,447,742.40
UNIVERSITY COLLEGE	\$54,106.00	\$56,440.00	\$84,568.00	\$85,160.00	\$0.00	\$280,274.00
UNIVERSITY LIBRARY	\$0.00	\$7,625.00	\$0.00	\$14,212.00	\$0.00	\$21,837.00
<b>Totals</b>	<b>\$60,315,734.26</b>	<b>\$73,448,116.97</b>	<b>\$62,258,991.91</b>	<b>\$63,734,469.53</b>	<b>\$42,120,814.86</b>	<b>\$301,878,127.53</b>



**Table 3a. Awards received by colleges and departments FY05 through November FY09**

<u>College</u>	<u>FY05</u>	<u>FY06</u>	<u>FY07</u>	<u>FY08</u>	<u>FY09 YTD</u>	<u>Totals</u>
<b>Arts and Sciences</b>	<b>\$6,035,828.66</b>	<b>\$7,824,205.64</b>	<b>\$7,960,353.47</b>	<b>\$12,765,590.25</b>	<b>\$5,846,877.74</b>	<b>\$40,432,855.76</b>
ART	\$0.00	\$2,470.00	\$6,921.12	\$384.66	\$0.00	\$9,775.78
CANCER PREVENTION RESEARCH CTR	\$2,237,081.87	\$3,153,686.51	\$3,351,982.25	\$5,075,381.00	\$1,590,261.00	\$15,408,392.63
CHEMISTRY	\$470,778.00	\$974,856.00	\$896,017.74	\$5,120,789.90	\$2,459,341.00	\$9,921,782.64
COMPUTER SCIENCE/STATISTICS	\$1,486,417.25	\$768,471.00	\$1,079,665.06	\$288,518.60	\$811,058.00	\$4,434,129.91
DEAN'S OFFICE	\$3,000.00	\$3,000.00	\$0.00	\$0.00	\$0.00	\$6,000.00
ECONOMICS	\$8,614.00	\$8,000.00	\$0.00	\$0.00	\$0.00	\$16,614.00
FEINSTEIN HUNGER CTR(DEAN'S OFFICE)	\$269,513.00	\$543,844.00	\$686,724.00	\$602,155.00	\$20,000.00	\$2,122,236.00
HISTORY	\$35,037.00	\$142,515.20	\$56,000.00	\$79,417.00	\$24,978.00	\$337,947.20
LANGUAGES	\$81,680.04	\$165,581.50	\$227,331.25	\$75,260.25	\$624,218.34	\$1,174,071.38
LIBRARY AND INFORMATION STUDIES	\$504,775.00	\$0.00	\$0.00	\$20,496.40	\$21,750.90	\$547,022.30
MATHEMATICS	\$0.00	\$114,490.00	\$0.00	\$22,673.00	\$0.00	\$137,163.00
PHYSICS	\$0.00	\$323,977.00	\$431,913.00	\$747,894.00	\$138,287.50	\$1,642,071.50
PSYCHOLOGY	\$822,913.50	\$1,429,030.43	\$1,136,127.05	\$373,320.44	\$156,983.00	\$3,918,374.42
SOCIOLOGY/ANTHROPOLOGY	\$6,641.00	\$139,571.00	\$75,922.00	\$190,900.00	\$0.00	\$413,034.00
THEATRE	\$900.00	\$0.00	\$11,750.00	\$0.00	\$0.00	\$12,650.00
WOMEN'S STUDIES	\$108,478.00	\$54,713.00	\$0.00	\$168,400.00	\$0.00	\$331,591.00
<b>Business Administration</b>	<b>\$260,728.00</b>	<b>\$67,119.21</b>	<b>\$0.00</b>	<b>\$0.00</b>	<b>\$10,211.60</b>	<b>\$338,058.81</b>
ACCOUNTING	\$6,000.00	\$0.00	\$0.00	\$0.00	\$0.00	\$6,000.00
DEAN'S OFFICE	\$254,728.00	\$3,368.21	\$0.00	\$0.00	\$0.00	\$258,096.21
MANAGEMENT	\$0.00	\$63,751.00	\$0.00	\$0.00	\$10,211.60	\$73,962.60
<b>Contiuing Education</b>	<b>\$2,614.00</b>	<b>\$14,515.00</b>	<b>\$0.00</b>	<b>\$0.00</b>	<b>\$0.00</b>	<b>\$17,129.00</b>
LABOR RESEARCH CENTER	\$2,614.00	\$14,515.00	\$0.00	\$0.00	\$0.00	\$17,129.00
<b>College</b>	<b>FY05</b>	<b>FY06</b>	<b>FY07</b>	<b>FY08</b>	<b>FY09 YTD</b>	<b>Totals</b>
<b>Engineering</b>	<b>\$3,161,778.53</b>	<b>\$7,504,080.77</b>	<b>\$4,744,073.66</b>	<b>\$4,525,285.47</b>	<b>\$2,150,041.50</b>	<b>\$22,085,259.93</b>

CHEMICAL ENGINEERING	\$513,306.91	\$1,079,427.27	\$1,370,759.22	\$1,717,995.69	\$761,741.50	\$5,443,230.59
CIVIL/ENVIRONMENTAL ENGINEERING	\$469,959.50	\$565,361.50	\$352,797.00	\$133,710.00	\$90,574.00	\$1,612,402.00
DEAN'S OFFICE	\$391,321.56	\$196,476.50	\$91,969.00	\$0.00	\$0.00	\$679,767.06
ELECTRICAL ENGINEERING	\$596,451.78	\$780,106.10	\$660,679.24	\$577,515.00	\$531,968.00	\$3,146,720.12
INDUSTRIAL/MANUFACTURING EGR	\$86,535.00	\$52,631.00	\$256,086.00	\$8,118.00	\$20,019.00	\$423,389.00
MECHANICAL EGR/APPLIED MECHANICS	\$608,275.78	\$3,915,998.50	\$1,222,564.00	\$1,466,078.75	\$386,914.50	\$7,599,831.53
OCEAN ENGINEERING	\$495,928.00	\$914,079.90	\$789,219.20	\$621,868.03	\$358,824.50	\$3,179,919.63

---

<b>Environment and Life Sciences</b>	<b>\$10,332,061.70</b>	<b>\$13,830,497.57</b>	<b>\$13,678,422.86</b>	<b>\$9,507,339.56</b>	<b>\$13,776,399.93</b>	<b>\$61,124,721.62</b>
--------------------------------------	------------------------	------------------------	------------------------	-----------------------	------------------------	------------------------

BIOLOGICAL SCIENCES	\$237,422.25	\$765,814.00	\$184,559.16	\$805,390.40	\$21,750.90	\$2,014,936.71
CELL AND MOLECULAR BIOLOGY	\$785,351.45	\$1,415,681.80	\$683,903.41	\$827,174.00	\$541,368.00	\$4,253,478.66
COMMUNITY PLANNING/AREA DEVEL	\$106,461.72	\$1,512.00	\$4,000.00	\$5,000.00	\$0.00	\$116,973.72
COOPERATIVE EXTENSION	\$211,704.78	\$307,515.00	\$163,088.00	\$121,693.70	\$102,365.60	\$906,367.08
DEAN'S OFFICE	\$75,250.40	\$2,748,969.88	\$2,430,677.48	\$127,296.80	\$2,725,249.35	\$8,107,443.91
ENV & NAT RESOURCE ECONOMICS	\$1,521,719.86	\$916,576.16	\$690,729.76	\$544,219.24	\$85,107.00	\$3,758,352.02
FISHERIES, ANIMAL & VET SCIENCE	\$1,014,167.64	\$904,782.68	\$3,628,840.72	\$918,120.24	\$237,334.90	\$6,703,246.18
FOOD SCIENCE/NUTRITION	\$1,859,264.90	\$1,293,698.00	\$1,110,031.25	\$1,992,011.59	\$1,470,675.35	\$7,725,681.09
GEOSCIENCE	\$167,085.21	\$371,017.57	\$430,437.42	\$557,322.73	\$5,045,599.30	\$6,571,462.23
MARINE AFFAIRS	\$239,899.20	\$672,805.64	\$253,727.94	\$262,509.28	\$41,420.00	\$1,470,362.06
NATURAL RESOURCES SCIENCE	\$2,915,875.69	\$3,115,660.99	\$2,387,194.25	\$2,686,576.33	\$2,779,221.38	\$13,884,528.64
PLANT SCIENCE	\$1,197,858.60	\$1,316,463.85	\$1,711,233.47	\$660,025.25	\$726,308.15	\$5,611,889.32

---

<b>Graduate School</b>	<b>\$15,000.00</b>	<b>\$0.00</b>	<b>\$0.00</b>	<b>\$0.00</b>	<b>\$0.00</b>	<b>\$15,000.00</b>
------------------------	--------------------	---------------	---------------	---------------	---------------	--------------------

---

<u>College</u>	<u>FY05</u>	<u>FY06</u>	<u>FY07</u>	<u>FY08</u>	<u>FY09 YTD</u>	<u>Totals</u>
<b>Human Science and Services</b>	<b>\$8,089,985.46</b>	<b>\$4,465,380.40</b>	<b>\$6,394,476.43</b>	<b>\$6,407,781.91</b>	<b>\$601,867.00</b>	<b>\$25,959,491.20</b>
COMMUNICATIVE DISORDERS	\$279,729.00	\$308,815.00	\$399,398.33	\$312,469.66	\$0.00	\$1,300,411.99
DEAN'S OFFICE	\$303,836.00	\$568,430.00	\$396,398.00	\$588,558.00	\$14,012.00	\$1,871,234.00

EDUCATION	\$4,873,352.57	\$2,849,294.40	\$4,513,903.60	\$3,619,601.40	\$303,651.00	\$16,159,802.97
GERONTOLOGY	\$446,617.30	\$0.00	\$0.00	\$634,115.55	\$142,102.00	\$1,222,834.85
HUMAN DEV/COUNSEL/FAM STUDIES	\$292,742.00	\$135,372.00	\$337,842.00	\$193,755.30	\$0.00	\$959,711.30
PHYS ED/HEALTH/RECREATION	\$673,700.00	\$0.00	\$192,568.50	\$0.00	\$142,102.00	\$1,008,370.50
PHYSICAL THERAPY	\$1,168,518.00	\$497,240.00	\$449,530.00	\$1,059,282.00	\$0.00	\$3,174,570.00
TEXTILES/FASHION MERCHAND/DESIGN	\$51,490.59	\$106,229.00	\$104,836.00	\$0.00	\$0.00	\$262,555.59
<b>Nursing</b>	<b>\$485,073.00</b>	<b>\$919,777.55</b>	<b>\$835,971.48</b>	<b>\$927,796.54</b>	<b>\$647,877.30</b>	<b>\$3,816,495.87</b>
<b>Oceanography</b>	<b>\$22,465,138.49</b>	<b>\$26,282,651.39</b>	<b>\$20,520,548.16</b>	<b>\$20,999,179.82</b>	<b>\$13,644,992.50</b>	<b>\$103,912,510.36</b>
<b>Pharmacy</b>	<b>\$6,658,880.72</b>	<b>\$9,283,525.25</b>	<b>\$6,779,109.45</b>	<b>\$6,744,604.98</b>	<b>\$2,981,622.00</b>	<b>\$32,447,742.40</b>
APPLIED PHARMACEUTICAL SCIENCES	\$984,993.00	NA	NA	NA	NA	\$984,993.00
BIOMEDICAL & PHARMACEUTICAL SCI	\$1,233,172.22	\$7,749,483.25	\$5,426,110.45	\$5,672,398.18	\$1,332,236.40	\$21,413,400.50
BIOMEDICAL SCIENCES	\$4,259,006.50	NA	NA	NA	NA	\$4,259,006.50
CRIME LAB	\$129,710.00	\$609,100.00	\$686,597.00	\$701,464.00	\$704,804.00	\$2,831,675.00
DEAN'S OFFICE	\$0.00	\$450,000.00	\$0.00	\$0.00	\$0.00	\$450,000.00
PHARMACY PRACTICE	\$51,999.00	\$474,942.00	\$666,402.00	\$370,742.80	\$944,581.60	\$2,508,667.40
<b>University College</b>	<b>\$54,106.00</b>	<b>\$56,440.00</b>	<b>\$84,568.00</b>	<b>\$85,160.00</b>	<b>\$0.00</b>	<b>\$280,274.00</b>
<b>University Library</b>	<b>\$0.00</b>	<b>\$7,625.00</b>	<b>\$0.00</b>	<b>\$14,212.00</b>	<b>\$0.00</b>	<b>\$21,837.00</b>

NA - Not Applicable (department discontinued)

**Table 3b. Awards received by administrative units FY05 through November FY09**

<u>Administrative Unit</u>	<u>FY05</u>	<u>FY06</u>	<u>FY07</u>	<u>FY08</u>	<u>FY09 YTD</u>	<u>Totals</u>
<b>President's Office</b>	<b>\$1,970,033.00</b>	<b>\$1,883,412.00</b>	<b>\$356,399.00</b>	<b>\$1,328,095.20</b>	<b>\$93,898.00</b>	<b>\$5,631,837.20</b>
PRESIDENT'S OFFICE	\$0.00	\$0.00	\$0.00	\$4,320.00	\$0.00	\$4,320.00
TRANSPORTATION CENTER	\$1,970,033.00	\$1,883,412.00	\$356,399.00	\$1,323,775.20	\$93,898.00	\$5,627,517.20
<b>Provost</b>	<b>\$168,040.20</b>	<b>\$119,951.40</b>	<b>\$121,548.40</b>	<b>\$142,066.00</b>	<b>\$0.00</b>	<b>\$551,606.00</b>
ADVANCE	\$0.00	\$0.00	\$0.00	\$22,500.00	\$0.00	\$22,500.00
OFFICE OF INFORMATION SERVICES	\$42,594.00	\$0.00	\$0.00	\$0.00	\$0.00	\$42,594.00
PROVOST	\$125,446.20	\$119,951.40	\$121,548.40	\$119,566.00	\$0.00	\$486,512.00
<b>VP, Administration</b>	<b>\$20,000.00</b>	<b>\$92,325.00</b>	<b>\$0.00</b>	<b>\$0.00</b>	<b>\$1,931,783.00</b>	<b>\$2,044,108.00</b>
POLICE	\$0.00	\$92,325.00	\$0.00	\$0.00	\$0.00	\$92,325.00
VICE PRESIDENT FOR ADMINISTRATION	\$20,000.00	\$0.00	\$0.00	\$0.00	\$1,931,783.00	\$1,951,783.00
<b>VP, Research &amp; Economic Development</b>	<b>\$195,130.50</b>	<b>\$495,407.50</b>	<b>\$131,299.00</b>	<b>\$0.00</b>	<b>\$125,718.00</b>	<b>\$947,555.00</b>
<b>VP, Student Affairs</b>	<b>\$401,336.00</b>	<b>\$601,203.29</b>	<b>\$652,222.00</b>	<b>\$287,357.80</b>	<b>\$309,526.29</b>	<b>\$2,251,645.38</b>
HEALTH SERVICES	\$35,925.00	\$0.00	\$12,830.00	\$0.00	\$10,800.00	\$59,555.00
STUDENT LIFE	\$365,411.00	\$601,203.29	\$639,392.00	\$149,989.00	\$157,879.29	\$1,913,874.58
TALENT DEVELOPMENT	\$0.00	\$0.00	\$0.00	\$137,368.80	\$140,847.00	\$278,215.80