

001  
002  
003  
004  
005  
006  
007  
008

**SCHOLARLY  
COMMUNICATION  
OUTREACH:  
ORS, ETDS, LIAISONS &  
MORE**

009  
010

**TODD BRUNS**

011

**FEATURING STEVE BRANTLEY AND STACEY KNIGHT-DAVIS**

012

**DC+ GLUG 2015**

013  
014  
015  
016

**JULY 30, 2015**

# AGENDA

- **CONTEXT**
- **SCHOLARLY COMMUNICATION COACHES**
- **OUTREACH PROJECT**
  - **FACULTY SURVEY**
  - **OERS, SUCCESS + SERVICE, SELECTEDWORKS**
  - **UNITS/OFFICES: RESEARCH & GRAD SCHOOL**
- **CONCLUSION**

# CONTEXT

001  
002  
003  
004  
005  
006  
007  
008  
009  
010  
011  
012  
013  
014  
015  
016

001  
002  
003  
004  
005  
006  
007  
008  
009  
010  
011  
012  
013  
014  
015  
016

# CONTEXT

**INCREASING NEED FOR SCHOLARLY  
COMMUNICATION SUPPORT:**

# CONTEXT



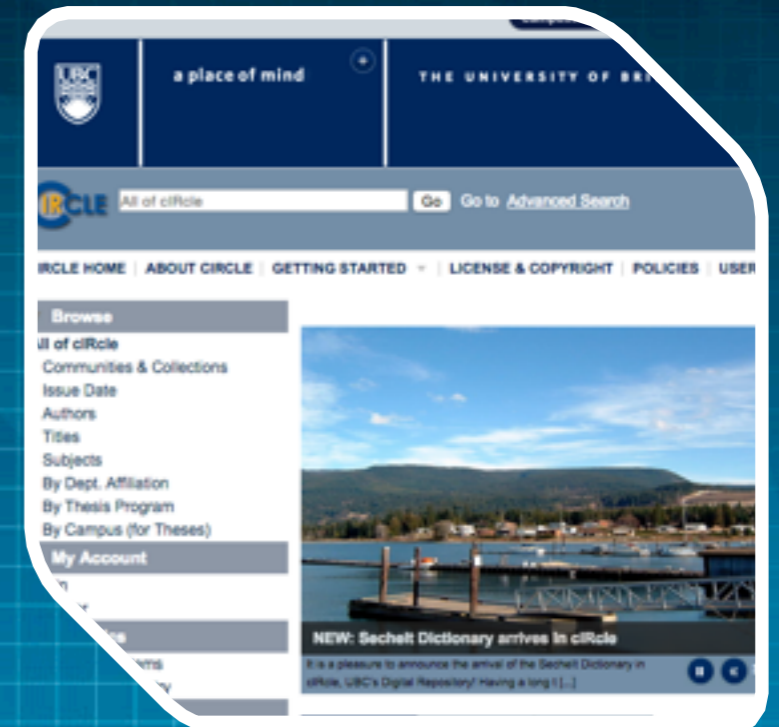
**INCREASING NEED FOR SCHOLARLY  
COMMUNICATION SUPPORT:  
OREGON STATE UNIVERSITY**

# CONTEXT



INCREASING NEED FOR SCHOLARLY  
COMMUNICATION SUPPORT:  
OREGON STATE UNIVERSITY  
UNIVERSITY OF MINNESOTA

# CONTEXT



INCREASING NEED FOR SCHOLARLY  
COMMUNICATION SUPPORT:  
OREGON STATE UNIVERSITY  
UNIVERSITY OF MINNESOTA  
UNIVERSITY OF BRITISH COLUMBIA

# SCHOLARLY COMMUNICATION COACHES



# SCHOLARLY COMMUNICATION COACHES

## LIAISONS



# SCHOLARLY COMMUNICATION COACHES

## LIAISONS SC TOOLKIT

The screenshot shows a web page titled "Scholarly Communication Coaching tools" from Eastern Illinois University. The page includes a search bar, navigation links, and several resource sections. The "Scholarly Communication" section features a link to CARLI Scholarly Communication. The "Copyright" section contains introductory text about the tools and their purpose. The "Sherpa/ROME" section includes a small image of the Sherpa/ROME logo and a link to the website. The "Open Access" section features a link to DOAJ.

EASTERN ILLINOIS UNIVERSITY a-z | panthermail | paws | eiu online (D2L)

search library web

### Scholarly Communication Coaching tools

Library Home : Resources by Subject : Research Guides DOI Embed

**BOOTH.EIU.EDU/SCCOACH**

#### Scholarly Communication


**CARLI Scholarly Communication:** <http://www.carli.illinois.edu/products-services/scholcomm>  
An introduction to scholarly communication with links to pertinent Organizations, Model Scholarly Communications Sites, Copyright and Publisher Permissions, Repositories, Conferences and Professional Development, Legislation and Policy, and Blogs. The page is maintained by CARLI (Consortium of Academic and Research Libraries in Illinois).

#### Copyright

The tools listed on this page will help you as a liaison librarian become conversant in copyright, open access and current issues in scholarly communication. In other words, familiarizing yourself with these tools will help you gain a basic understanding of copyright and intellectual property as it relates to the retention and exercise of your rights to your own work, OR what kind of use can be made of your work if the copyright is owned by the publisher.

Often, copyright-questions addressed to librarians have to do with faculty or students asking if their particular use of another author's intellectual property is in observance of copyright law. This is a defensive position.

Our perspective is somewhat different in that we are encouraging the author to understand and assert their own rights to share their scholarship. It is the difference between respecting the rights of others and exercising your own power.

 **Sherpa/ROME:** <http://www.sherpa.ac.uk/romeo/>  
The ROME project from the UK's Sherpa consortium of Open Access Institutional Repositories. It is a database of scholarly-publisher's copyright policies. It tells you what you can and cannot do with your work when you choose a publisher.

#### Open Access

**DOAJ:** <https://doaj.org>  
The DOAJ or Directory of Open Access Journals with almost 11,000 journals over 6,000 of

# SCHOLARLY COMMUNICATION COACHES

LIAISONS

SC TOOLKIT

COPYRIGHT - SHERPA



**SHERPA/ROMEO**

ublisher copyright policies & self-archiving

**Search**

Journal titles or ISSNs  Publisher names

Exact title  starts with  contains  ISSN

[Advanced Search](#)

*Use this site to find a summary of permissions that are normally given as part of a publisher's copyright transfer agreement.*

# SCHOLARLY COMMUNICATION COACHES

LIAISONS

SC TOOLKIT

COPYRIGHT - SHERPA

PUBLISHING - BEALL'S,  
DOAJ, OA JOURNALS  
QUALITY INDICATORS

## BOSTON COLLEGE UNIVERSITY LIBRARIES

Libraries / Research Guides / Assessing Journal Quality

### Assessing Journal Quality: OA Journals Quality Indicators

[Overview](#) | [Publishing transitions](#) | [Impact factors](#) | [Other metrics](#) | [AltMetrics](#) | [Open Access Journals](#) | [Quality Indicators](#)

#### Assessing OA Journal Quality

Open Access journals make articles freely available online, permitting users to read, redistribute or reuse content. Often the reuse rights are defined by the journal's license. New open access journals have been proliferating rapidly. Many are high-quality peer-reviewed publications. The low barrier to entry into the field has led to some journals that engage in unprofessional or unethical practices. The following quality indicators are intended to provide guidance in evaluating publication venues for your research.

No single criterion below indicates whether or not a publication is reputable, but the balance of positive and negative indicators may help you make a decision. For more information, contact your [subject liaison librarian](#).

The indicators are adapted from those provided by Grand Valley State University Libraries.

-  [Open Access Journal Quality Indicators](#)  
A printable version of the indicators.

#### Positive Indicators

- Scope of the journal is well-defined and clearly stated
- Journal's primary audience is researchers/practitioners
- Editor, editorial board are recognized experts in the field
- Journal is affiliated with or sponsored by an established scholarly or academic institution
- Articles are within the scope of the journal and meet the standards of the discipline
- Any fees or charges for publishing in the journal are easily found on the journal website and clearly explained
- Articles have DOIs (Digital Object Identifiers)

Journal clearly indicates rights for use and re-use of articles at the article level (for example, [Creative Commons license](#))

#### Negative Indicators

- Journal website is difficult to navigate
- Publisher "About" information is missing or unclear
- A single editor is listed and editorial board is not clearly defined
- Publisher direct marketing (spam) is present
- Instructions for authors are not available or unclear
- Information on peer review and editorial process is missing or unclear
- Journal scope statement is absent or unclear
- No information is provided about the journal's relationship to a parent organization
- Repeat lead authors in the same field

# SCHOLARLY COMMUNICATION COACHES

LIAISONS

SC TOOLKIT

COPYRIGHT - SHERPA

PUBLISHING - BEALL'S,  
DOAJ, OA JOURNALS  
QUALITY INDICATORS

# SCHOLARLY COMMUNICATION COACHES

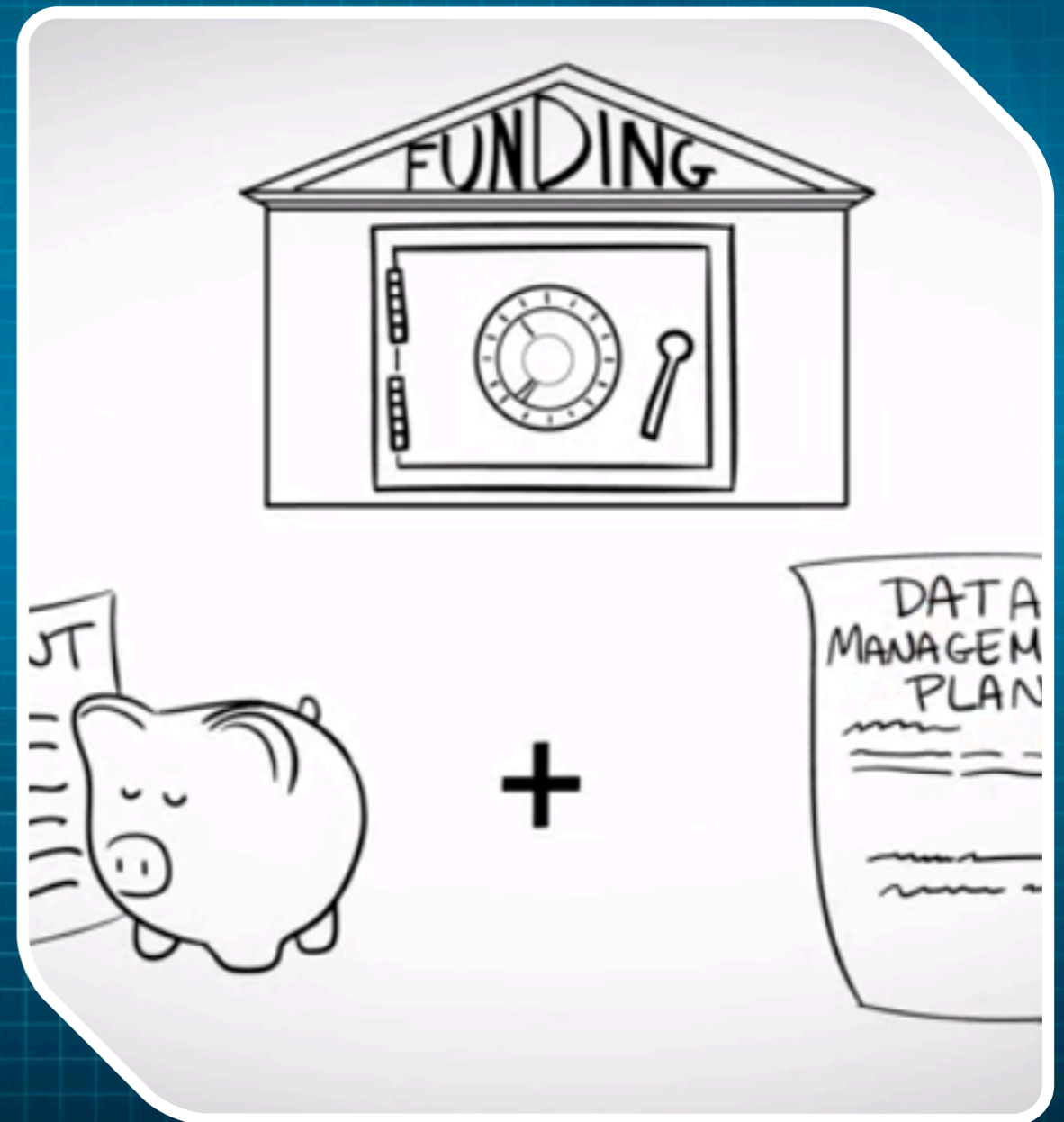
LIAISONS

SC TOOLKIT

COPYRIGHT - SHERPA

PUBLISHING - BEALL'S,  
DOAJ, OA JOURNALS  
QUALITY INDICATORS

DATA MGMT - DMPTOOL



# SCHOLARLY COMMUNICATION COACHES

LIAISONS

SC TOOLKIT

COPYRIGHT - SHERPA

PUBLISHING - BEALL'S,  
DOAJ, OA JOURNALS  
QUALITY INDICATORS

DATA MGMT - DMPTOOL

OA RESOURCES - SW,  
DCN, RESEARCH GATE,  
ACADEMIA.EDU

## The Keep

*Institutional Repository*  
A repository service of Booth Library

### SelectedWorks Author Gallery

This collection represents the SelectedWorks pages of individuals affiliated with Eastern Illinois University. You can also browse the SelectedWorks pages by Departments or by Colleges.

ABCDEFGHIJKLMNOPQRSTUVWXYZ



**Ahmed Abou-Zaid**  
Associate Professor  
Economics  
Macroeconomics

[Visit Site](#)



**Melissa A. Ames**  
Associate Professor  
English  
Television Study

[Visit Site](#)



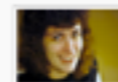
**Rendong Bai**  
Assistant Professor  
School of Technology

[Visit Site](#)



**David S Bell**  
Professor  
Library Services  
Reference Services

[Visit Site](#)



**Axton Betz-Hamilton**  
Assistant Professor  
Identity Theft  
child identity theft

[Visit Site](#)



**John Bickford**  
Assistant Professor  
Early Childhood, Elementary &  
Middle Level Education

[Visit Site](#)

# OUTREACH PROJECT



# OUTREACH PROJECT

## FACULTY SURVEY

# OUTREACH PROJECT

## FACULTY SURVEY

125 RESPONDENTS

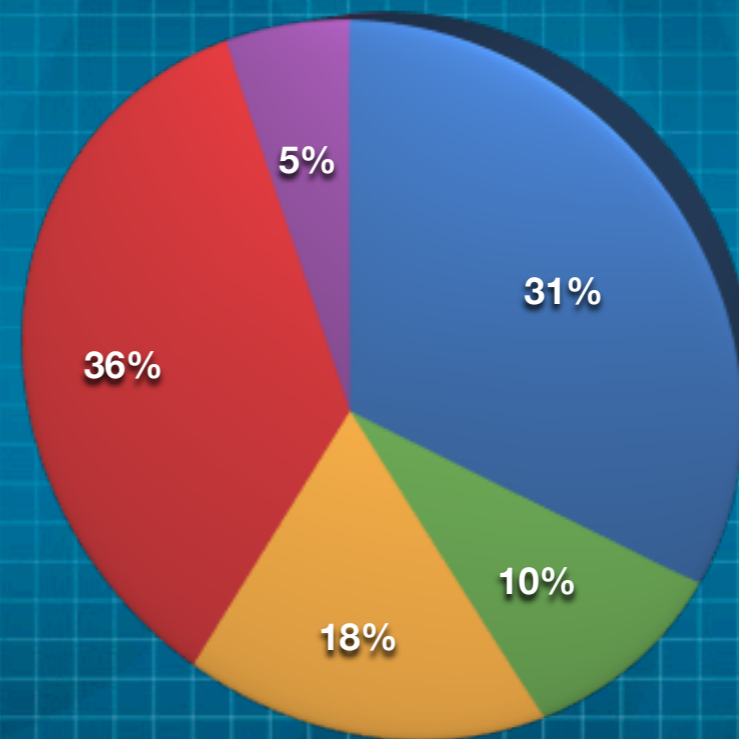
# OUTREACH PROJECT

## FACULTY SURVEY

125 RESPONDENTS

35% RESPONSE RATE

## By College



- Arts & Humanities
- Business
- Education
- Science
- Library Services

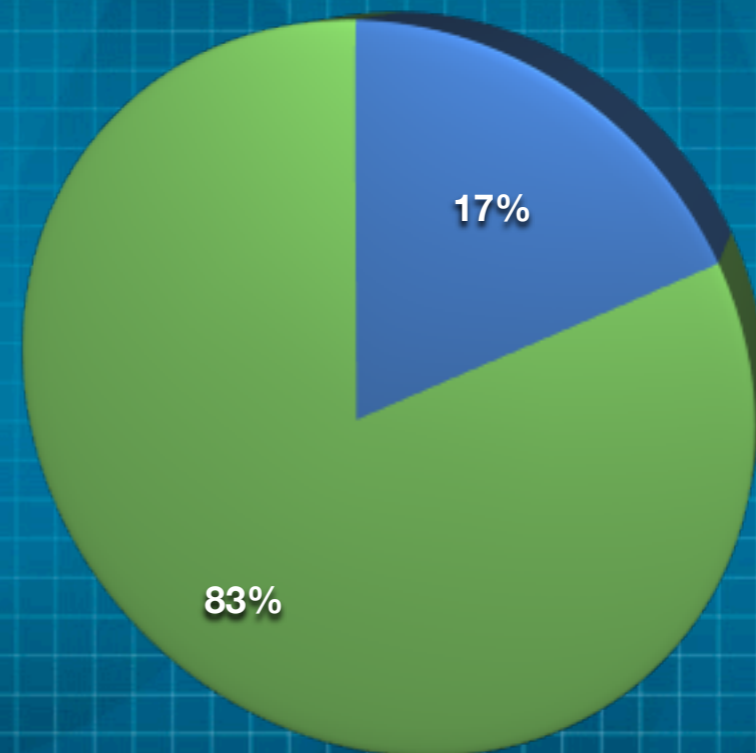
# OUTREACH PROJECT

## PARTICIPATING DEPTS.

### FACULTY SURVEY

125 RESPONDENTS

35% RESPONSE RATE



# OUTREACH PROJECT

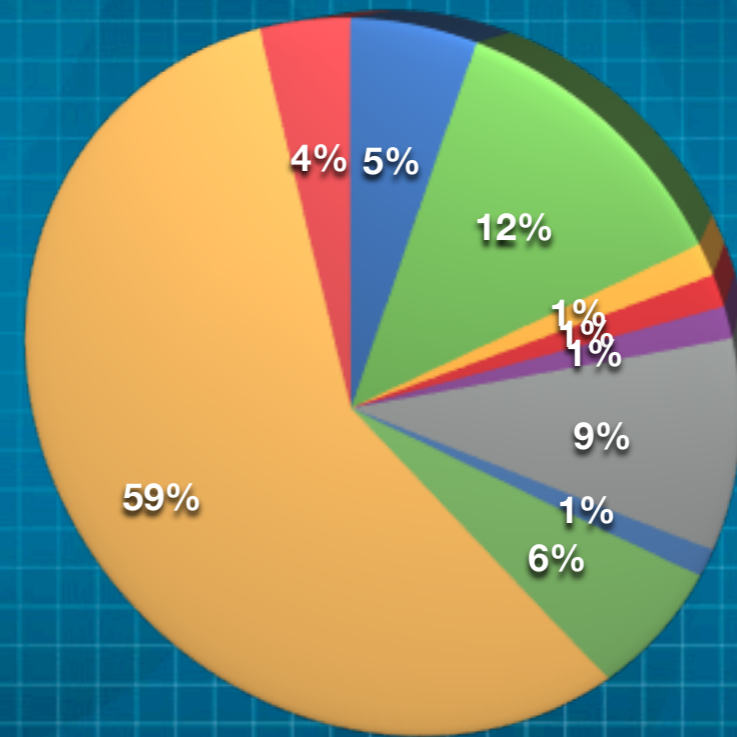
## M/O/P Research

### FACULTY SURVEY

125 RESPONDENTS

35% RESPONSE RATE

79 RANKED PRIORITY RESEARCH



- Creative Works
- Dissertations
- Manuscripts
- Presentations
- Publications
- Data
- Historical/Archival
- Multimedia
- Primary Research Materials
- Working Papers

# OUTREACH PROJECT

## M/O/P Teaching

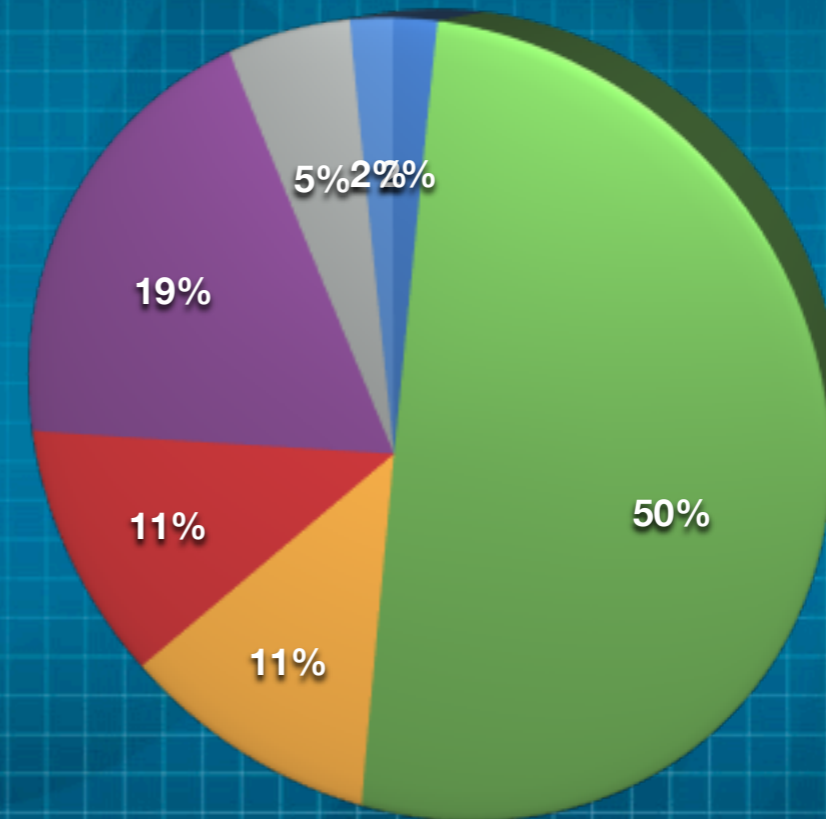
### FACULTY SURVEY

125 RESPONDENTS

35% RESPONSE RATE

79 RANKED PRIORITY RESEARCH

62 RANKED PRIORITY TEACHING



- Creative Works
- Historical/Archival
- OER
- Working Papers
- Curricula Materials
- Multimedia
- Primary Research

# OUTREACH PROJECT

FALL 2015

DEERS | SUCCESS + SERVICE | NEW SELECTEDWORKS

# OUTREACH PROJECT

FALL 2015

WORKERS | SUCCESS + SERVICE | NEW SELECTEDWORKS

The image displays two side-by-side screenshots of a web browser. The left screenshot shows a 'SelectedWorks' profile for Lauri J. DeRuiter-Willems, featuring a presentation titled 'Student and faculty expectations for learning in various delivery models'. The right screenshot shows an 'Edit HTML File' interface for embedding content from the SelectedWorks profile into a course page.

**VIDEO AVAILABLE IN THE DIGITAL COMMONS COLLABORATORY AT:**  
<http://digitalcommons.bepress.com/collaboratory/91/>

SelectedWorks™ is a trademark of bepress.  
Copyright 1999-2015 bepress™ All rights reserved.  
Terms of Service | Copyright | Privacy



# OUTREACH PROJECT

FALL 2015

DEERS

SUCCESS + SERVICE

NEW SELECTEDWORKS

# OUTREACH PROJECT


FALL 2015

OVERS

SUCCESS + SERVICE

NEW SELECTEDWORKS

REPORT  
AVAILABLE IN  
DIGITAL  
COMMONS  
COLLABORATORY:  
[http://  
digitalcommons.  
bepress.com/  
collaboratory/89/](http://digitalcommons.bepress.com/collaboratory/89/)



## English in The Keep

A success and service report for the Department of English


**Faculty success:**

There are currently nine English faculty members participating in The Keep, for a participation rate of 19%.

These nine faculty members have deposited 49 documents, which have been **downloaded 2,586** times as of Feb. 17, 2015.

English faculty papers have been downloaded around the world to numerous universities, colleges, schools, libraries, and private homes.

In the past 30 days, 150 faculty papers were downloaded to the following locations (example docs are called out):



**Fern Kary**, "Children's Literature and the 'New Negro'" to the **Milwaukie Public Library, Milwaukie, Massachusetts**

**Dawn Redden**, "On the Trail of the First Professional Female Detectives in British Fictions" to the **Ivan Mill College in Exeter, United Kingdom**

**Beannie Ludlow**, "Sometimes it's a Child and a Choice: Toward an Embodied Abortion Praxis" to the **University of Toronto, Toronto, Canada**

**Julie Campbell**, "Writing Renaissance Emblems: Flaming and Tortured Hearts in the First Part of the Countess of Montgomery's *Uranian*" to the **Sri Lanka Exhibit and Conference Hall, Colombo, Sri Lanka**

**Terri Fredrick**, "Stop! Think! Grade!: Developing a Philosophy of Writing Evaluation" to the **Universidad de Guadalajara, Guadalajara, Mexico**

**Melissa Ames**, "Engaging 'Apolitical' Adolescents: Analyzing the Popularity and Educational Potential of Dystopian Literature Post-9/11" to the **CAUCA University, Giza, Egypt**

**Tim Taylor**, "The Research Paper as an Act of Citizenship: Possibilities and Pragmatism" to the **University Saint Joseph of Kaslik, Kaslik, Lebanon**

Contact us at [thekeep@eiu.edu](mailto:thekeep@eiu.edu) for assistance with your **SelectedWorks** page, hosting an e-journal, or general questions. We are here to support you.

# OUTREACH PROJECT



## research and sponsored programs

The Office of Research and Sponsored Programs (ORSP) facilitates applications, negotiations, and procurement of grant funding for activities that are consistent with the mission and role of the University. Such activities include research, creative activity, acquisition of equipment, construction and improvement of facilities, and public service. The office also administers state-appropriated funds that the University allocates for research and creative activity. The office works to ensure compliance with university, state, and federal regulations that govern the conduct of research. This compliance oversight includes coordination of both the Institutional Review Board (IRB) and the Institutional Animal Care and Use Committee (IACUC). ORSP activities are a joint effort involving faculty members, visiting agency personnel, university fiscal authorities, and others.

\*\*\*  
**Announcement: UNIFORM GUIDANCE 2CFR 200**  
University has delayed the implementation of the new Procurement Rules detailed in 2 CFR 200.317 - 200.3

## Graduate Scholar

April 2013

### Journal of Scholarship and Recognition



## The Keep

A repository service of Booth Library

Home > CAH > Center for Humanities > Events > Events Archive > HUMANITIESCENTER\_TRANSFORMATIONS1213

### TRANSFORMATIONS 2012-2013

Follow

Switch View View Slideshow



**Jason Waller: The Existence of God: A Simple Argument that Changed the Mind of a Long-time Atheist, with response by Dr. Richard Foley**  
Jason Waller and Richard Foley



**Harriet A. Washington, Medical Ethicist and Author**  
Harriet A. Washington

Harriet Washington is an award-winning medical writer and editor, and the author of the best-selling book, *Medical Apartheid: The Dark History of Medical Experimentation on Black Americans from Colonial Times to the Present*, and *Deadly Monopolies: The Shocking Corporate Takeover of Life Itself*. In her work, she focuses mainly upon bioethics, history of medicine, African American health issues and the intersection of medicine, ethics and

## CONNECTING WITH UNITS & OFFICES

RESEARCH

GRADUATE SCHOOL

HUMANITIES



# CONCLUSION

TODD BRUNS

[TABRUNS@EIU.EDU](mailto:TABRUNS@EIU.EDU)