



give more opportunities for the development of novel and personalized treatment approaches as well as initiation of clinical trials.

A wide European network for the diagnosis and treatment of CNP (EuNet-INNOCHRON; <https://www.eunet-innochron.eu/>) funded by the European Cooperation of Science and Technology (COST) was launched in November 2019 (Fig. 1). It consists of clinicians and scientists from diverse scientific areas, early career investigators and biotechnological enterprises from more than 30 countries, mostly European, while also involving as collaborating partners the Severe Chronic Neutropenia International Registry (SCNIR; <https://severe-chronic-neutropenia.org>) and the European Hematology Association (EHA). EuNet-INNOCHRON is open to any clinician, researcher, scientific or patient society with a special focus in CNP. The network aims to: (a) harmonize the laboratory investigation of different types of CNP by facilitating the exchange of knowledge, tools, reagents, protocols and experience through inter-institutional collaborations; (b) formulate common diagnostic algorithms and treatment guidelines for patients with different types of CNPs aligned with the concepts of precision medicine; (c) organize new and expand existing CNP patient Registries and Biobanks using common protocols for sample collection, storage and management as well as template forms for patients' informed consent according to the ethical standards of the European Legal Framework and the national and local regulations; (d) collect real-world data on the epidemiology, clinical presentation and natural course of CNPs and identify markers for improved decision-making and risk-adapted treatment strategies; (e) promote training and

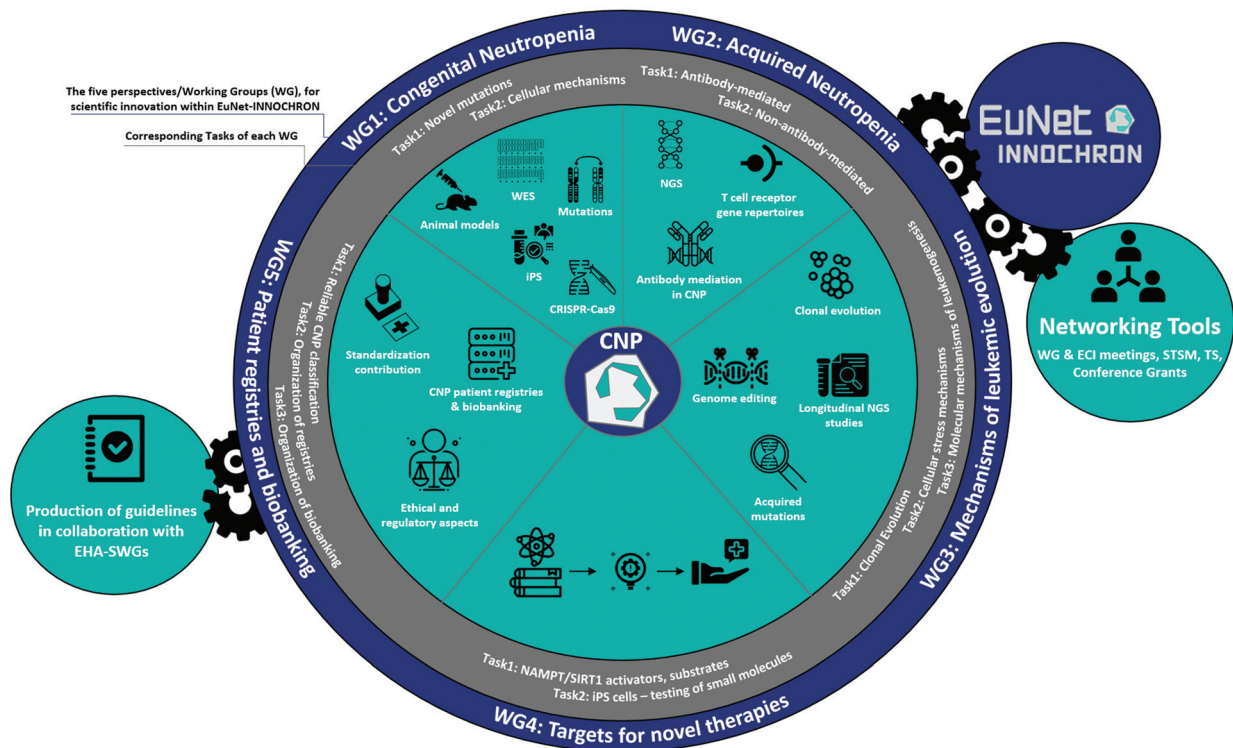
education of young investigators on advanced techniques; (f) foster entrepreneurial innovation and explore novel approaches for targeted drug development and innovative clinical trial design in collaboration with industrial partners. EuNet-INNOCHRON has adopted an excellence and inclusiveness policy and gives particular interest in the involvement of young researchers by offering a number of networking tools such as scientific meetings, short term scientific mission exchanges, training schools and conference grants.

## Perspectives for scientific innovations within EuNet-INNOCHRON

Five distinct but complementary Working Groups (WG) have been carefully designed within EuNet-INNOCHRON to address the challenges in CNP and promote breakthrough scientific developments and new concepts in the diagnosis, management and treatment of these patients (Table 1).

### Congenital neutropenias

This WG will perform whole exome sequencing (WES) studies in patients with unknown mutations and healthy family members and promote collaborations in this field; candidate genes will be functionally interrogated for their role in granulocyte differentiation by generating induced pluripotent stem (iPS) cell lines from patients. Abnormal genes will be corrected in patient-derived iPS cells using CRISPR-Cas9 technology and the potential improvement of in vitro granulocytic differentiation of the gene corrected iPS cell lines will be evaluated. Candidate gene mutations will be



**Figure 1. A schematic representation of the EuNet-INNOCHRON Action.** The figure depicts the main WG of the Action with the respective Tasks as well as the tools for addressing the challenges in the field of CNP. The main networking tools to achieve the objectives of the Action are also shown. CNP = chronic neutropenia, ECI = early career investigators, EHA-SWG = European Hematology Association – Scientific Working Groups, NGS = next generation sequencing, STSM = short term scientific missions, TS = training schools, WES = whole exome sequencing, WG = working group.

**Table 1****Challenges in CNP and perspectives through EuNet-INNOCHRON**

Challenges	Perspectives through EuNet-INNOCHRON
<p><b>1. Congenital Neutropenias</b></p> <p>The genetic defect(s) underlying these diseases is obscure in a significant proportion of patients.</p> <p>The pathophysiologic mechanisms leading to neutropenia are unclear even in cases with well-defined molecular defects.</p> <p>Limited availability of primary patient cells.</p> <p>The MDS/AML evolution in patients with specific disease types is a process with still unknown pathogenesis; predictive biomarkers are not available.</p> <p>Curative therapies are not available, excluding HSC transplantation. The field is open for: Personalized treatment approaches. Identification of targets for novel therapies.</p> <p>The rarity of the diseases results in difficulties in designing clinical trials.</p>	<p>WES studies will be performed in patients with unknown mutations and healthy family members. Exchange of knowledge and results between the different laboratories will be initiated.</p> <p>Studies with iPS cells: - iPS cell lines from selected patients will be generated and candidate genes will be corrected using CRISPR-Cas9 technology. - Candidate gene mutations will be introduced in iPS cells from healthy individuals to study the defective intracellular signaling pathways.</p> <p>CRISPR/Cas9 will be used to generate Zebrafish deficient for candidate genes or transgenic fish carrying patient-specific gene mutations.</p> <p>Novel methods will be developed to measure translation rates and analyze structures of native ribosome assembly intermediates from patient cells.</p> <p>Large-scale and longitudinal NGS studies will be performed in patients prone to develop MDS/AML. iPS cell-based and genome editing technologies will be used to elucidate the role of stress mechanisms, interrogate the sequential events leading to MDS/AML and develop strategies to redirect pre-malignant progenitors.</p> <p>New therapeutic strategies will be designed based on the iPS, genome editing and Zebrafish findings.</p> <p>The effect of molecules interfering with pathways of granulopoiesis will be evaluated in iPS cell lines from patients and Zebrafish and xenograft mouse models as well as in primary HSCs.</p> <p>The Network has already and is also open to industrial partners who are expected to facilitate the development of clinical trials.</p>
<p><b>2. Acquired CNP</b> <b>Autoantibody-mediated</b></p> <p>Detection of anti-neutrophil autoantibodies through high sensitivity and specificity techniques is not widely available and needs Reference Laboratories.</p> <p>Rare diseases underlying anti-neutrophil antibody production, such as PID and ALPS, need to be excluded.</p> <p><b>Non-antibody mediated</b></p> <p>Idiopathic CNP is a heterogeneous disorder with multiple and poorly defined pathogenetic mechanisms; diagnosis is based on exclusion criteria. Diagnostic algorithms are not widely available. The role of cell-mediated mechanisms needs further evaluation. Cases with benign course should be distinguished from CNP cases preceding MDS.</p>	<p>Experts from Reference Laboratories in anti-neutrophil antibodies detection have key roles in the Network and will contribute to: Exchange and transfer of knowledge on the different kinds of anti-neutrophil antibodies, their diagnostic value, and high-quality detection techniques; Training activities i.e. STSMs and TS.</p> <p>Partners within the Network have the potential for clinical and laboratory integrated comprehensive approach of PID and ALPS including NGS or WES and will offer diagnostic and training opportunities.</p> <p>Researchers within the Network will: Develop diagnostic algorithms to ensure the diagnosis of Idiopathic CNP; Probe the TCR gene repertoires from different idiopathic CNP patients to identify disease-specific clonotypes; Investigate the role of MDSCs; Study the interactions between BM granulocytic progenitors and MSCs. Develop NGS panels and WES for the recognition of CNP-associated mutations or SNPs as well as clonal hemopoiesis and will longitudinally monitor patient clones in relation to patient outcome.</p>
<p><b>3. Patient Registries and Biobanking</b></p> <p>Few Registries and Biobanks for CNP patients exist in Europe.</p> <p>More than 30% of patients remain undiagnosed due to non-accessibility to advanced techniques.</p> <p>Absence of real-world data from large number of patients with different types of CNP.</p> <p>The rarity of different types of CNP results in difficulties in recruiting patients for clinical trials.</p> <p>Unified protocols for patient registration and biobanking are needed under the ethics and standards of the European Legal Framework.</p> <p>Absence of a reliable classification for CNP in the ICD system</p>	<p>Experts representing well established international (SCNIR) and national CNP patient Registries have key roles in the Network; they will provide expertise for the establishment of new and interconnection of the existing Registries.</p> <p>A WG within the Network will propose guidelines for biobanking.</p> <p>Real-world data will be collected and reliable statistics will be obtained on incidence, prevalence, morbidity, mortality, infections' rate, QoL, proportion of patients receiving G-CSF and dose, number of patients undergoing HSC transplantation, comorbidities and rate of MDS/AML.</p> <p>Patient samples will be collected systematically within the Network for diagnostic and research purposes.</p> <p>Opportunities for clinical trials will emerge.</p> <p>A single classification of all different diseases associated with CNP will be proposed.</p>
<p><b>4. Overarching challenge</b></p> <p>CNP includes a wide variety of heterogeneous diseases for which no comprehensive diagnostic and treatment indications are currently available.</p> <p>Often diagnostic and treatment needs differ in children and adults.</p>	<p>The Network includes a large number of European and overseas experts in childhood and adult CNP. The Action is strongly endorsed by EHA. One of the most important fields of activity of EHA is elaboration of Guidelines. This background offers a unique opportunity to produce guidelines on CNP based on the largest panel of experts worldwide.</p>

ALPS = autoimmune lymphoproliferative syndrome, AML = acute myeloid leukemia, BM = bone marrow, CNP = chronic neutropenia, EHA = European Hematology Association, G-CSF = granulocyte colony stimulating factor, HSC = hemopoietic stem cells, ICD = International Classification of Diseases, iPS cells = induced pluripotent stem cells, MDS = myelodysplastic syndrome, MDSC = myeloid derived suppressor cells, MSC = mesenchymal stem cells, NGS = next generation sequencing; PID = primary immune deficiencies, QoL = quality of life, SCNIR = severe chronic neutropenia international registry, SNP = single nucleotide polymorphism, STSM = short term scientific missions, TS = training schools, WES = whole exome sequencing.

also introduced into iPS cells derived from healthy individuals and their effects on granulocyte differentiation will be evaluated in vitro.<sup>14,17</sup> RNA-sequencing analysis of HSCs generated from isogenic iPS cell lines will help to identify deregulated intracellular signaling pathways and candidate factors underlying the cellular phenotypes of neutropenias. CRISPR-Cas9 will be used to generate Zebrafish either deficient for the candidate genes or carrying patient-specific gene mutations. This WG will also study the CNP associated with Shwachman-Diamond Syndrome (SDS) to better understand the role of the causative genes *SBDS*, *EFL1*, and *DNAJC21* in ribosome assembly and also provide templates for the development of novel therapeutics.<sup>18</sup> Robust, viable animal models will be generated and exploited to better understand SDS pathogenesis and promote the development of new therapeutics. A key objective of this WG is to establish new collaborations to achieve our goals.

### Acquired CNP

This WG will invest in collaborative work for the investigation of antibody- and non-antibody mediated CNP. An important goal is to raise awareness of the diversity of acquire CNP and the available diagnostic platforms. Emphasis will be given on the transfer of knowledge and methodological hands-on training on the high-quality detection of anti-neutrophil autoantibodies (sensitivity and specificity). Many traditional techniques are present in special laboratories whereas new diagnostic platforms are available with a potential for more wide-spread use. Novel diagnostic tools, such as next generation sequencing (NGS) including WES to understand better rare diseases that can by themselves cause antibody-mediated CNP, such as autoimmune lymphoproliferative syndrome (ALPS) and primary immune deficiencies (PID), will be performed.<sup>19</sup> Regarding the non-antibody-mediated CNPs, particular networking will be directed to the idiopathic cases. Specifically, the WG will help to probe the T cell receptor gene repertoires from different patients with idiopathic CNP using NGS and results will be compared with public databases or databases from other diseases with overlapping features (eg, proliferations of T large granular lymphocytes, other bone marrow [BM] failure syndromes) to identify disease-specific but also shared clonotypes.<sup>11</sup> The role of myeloid cell populations, namely myeloid derived suppressor cells (MDSC), will also be explored in idiopathic CNP as well as the significance of clonal hemopoiesis in correlation with patient outcome.<sup>20</sup>

### Mechanisms of leukemic evolution

MDS/AML evolution in specific types of CNPs is a multistep process of sequential hits and predictive biomarkers are not available.<sup>21</sup> Congenital CNP is an interesting model to study leukemogenesis considering that the very first mutation of the process is acting in both hemopoietic cells and the BM microenvironment since embryogenesis. Large-scale application of NGS in these cases as well as in acquired CNP with a propensity to develop MDS/AML will significantly improve diagnosis and risk stratification. Longitudinal NGS studies will be performed to provide new insights into driver mutations and stepwise transformation. This WG will also investigate the role of cellular stress mechanisms in leukemic evolution. Novel tools, based on iPS cells and genome editing technologies will be developed to elucidate these stress mechanisms and interrogate the sequential events leading to MDS/AML. Key findings will be exploited to develop strategies to redirect premalignant progenitors back to

normal. The WG will also establish ultra-deep sequencing of the critical region of the *CSF3R* and *RUNX1* genes and will also explore the importance of these acquired mutations in leukemic evolution through longitudinal retrospective analysis of multiple BM samples of large number of patients with Congenital Neutropenias. Animal models (Mice and Zebrafish) will be also used to study molecular mechanisms of leukemogenesis triggered by *CSF3R* and *RUNX1* mutations. The landscape and clonal dynamics of genome-wide somatic mutations associated with MDS/AML transformation in SDS will be investigated in single-cell derived HSC and progenitor cell colonies from these patients.

### Identification of targets for novel therapies

It has been shown that activation of the NAMPT/NAD<sup>+</sup>/SIRT6-mediated signaling as compensatory mechanisms of the G-CSF-mediated granulopoiesis results in induction of granulopoiesis in healthy individuals and CNP patients.<sup>22</sup> This WG will promote studies on the evaluation of the effects of different NAMPT and SIRT6 activators as well as the NAMPT substrate, nicotinamide, on the G-CSF-induced granulopoiesis in vitro using iPS cell-based hemopoietic differentiation, primary BM HSCs, and in Zebrafish and xenograft mouse models. The WG will also facilitate the establishment of iPS cell lines from Congenital Neutropenia patients with different gene mutations and will study the effects of small molecules on the granulocytic differentiation. Small molecules capable of inducing differentiation will next be tested in primary HSCs and in animal models, including Zebrafish and Mice. We will also promote research on the potential of novel molecules to interfere with neutrophil elastase whose malfunction is a frequent cause of Congenital Neutropenia. Inhibitors of neutrophil elastase proteolytic activity are expected to broaden the therapeutic opportunities for these patients.<sup>23</sup>

### CNP patient Registries and biobanking

Partners from national CNP patient registries, biobanking consortia and SCNIR will contribute to the organization and interconnection of CNP patient Registries and Biobanks at the European level.<sup>24</sup> The WG will contribute to the standardization of the modus operandi of the national CNP Registries across participant countries to ensure reliable statistics and standard indicators on incidence, prevalence, morbidity, mortality, infection rates, quality of life, proportion of patients receiving G-CSF and dose, number of patients undergoing HSC transplantation, comorbidities and rate of MDS/AML. Given that the availability of Biobanks is a prerequisite for progress in understanding CNPs and improving patient care, the WG will promote the systemic and standardized collection of patient samples and will propose guidelines for biological data collection, management, sharing and transfer according to the European Legal Framework taking also into account national and regional ethical and regulatory aspects. Issues specific to the type of samples (serum, blood and/or BM cells, others) and the time points of collection to allow pertinent study in close linkage with clinical data will be defined. Finally, the WG will propose a single classification of all different diseases associated with CNP.

### Capacity building within EuNet-INNOCHRON and beyond

The EuNet-INNOCHRON is an open network focused on the investigation, characterization, harmonization of diagnosis and

treatment of CNPs, promotion of research, technology and entrepreneurial innovation, consisting so far of more than 30 countries. The Action was built on a network of experts in the field of CNP with long-standing collaborations and further enriched with scientists of diverse expertise to achieve an interdisciplinary and multidisciplinary approach to study the pathogenesis of CNP and is open to researchers, particularly at early career stages, related scientific societies, patient organizations, biotechnology and pharmaceutical companies. A key intention of EuNet-INNOCHRON is to foster broad collaborations and open the way for cutting-edge research and transfer of knowledge to the clinic. The consortium is anticipated to strengthen the interactions among experts in the field of CNP at the European level and beyond, to facilitate and extend the collaboration between existing outstanding networks such as EHA-Scientific Working Groups, SCNIR and national Registries for the introduction of common policies in CNP Registries and Biobanks, and, most importantly, to contribute to the generation of the future leading physicians and researchers in the field of CNPs with appropriate knowledge and skills to promote further research, innovation and personalized patient treatment.

## Authors' Contribution

HAP conceptualized the manuscript. All authors contributed to the writing and editing of the manuscript. All authors approved the final version.

## Disclosures

HAP has participated in Advisory Boards for Novartis and Abbvie Companies; JP is chair of the Neutropenia Advisory Board at ApoPharma Ltd, Toronto, Canada, (Chieti Canada Ltd); CD has participated in Advisory Board for Novartis. The rest of the authors declare no conflicts of interest.

This article is based upon work from COST Action CA18233 "European Network for Innovative Diagnosis and treatment of Chronic Neutropenias, EuNet-INNOCHRON" (<https://www.eunet-innochron.eu/>) supported by COST (European Cooperation in Science and Technology).

## Acknowledgments

The Authors would like to thank the Management Committee members and substitutes and all the Working Group members of the EuNet-INNOCHRON Action. The Authors also thank Mr Panos Bonotis, Research Associate at Institute of Applied Biosciences (INAB), Centre for Research & Technology Hellas (CERTH), Thessaloniki, Greece for the figure design.

## References

- Dale DC. How I diagnose and treat neutropenia. *Curr Opin Hematol*. 2016;23:1–4.
- Skokowa J, Dale DC, Touw IP, et al. Severe congenital neutropenias. *Nat Rev Dis Primers*. 2017;3:17032.
- Donadieu J, Beaupain B, Fenneteau O, et al. Congenital neutropenia in the era of genomics: classification, diagnosis, and natural history. *Br J Haematol*. 2017;179:557–574.
- Klein C. Children with rare diseases of neutrophil granulocytes: from therapeutic orphans to pioneers of individualized medicine. *Hematology Am Soc Hematol Educ Program*. 2016;2016:33–37.
- Warren AJ. Molecular basis of the human ribosomopathy Shwachman-Diamond syndrome. *Adv Biol Regul*. 2018;67:109–127.
- Skokowa J, Steinemann D, Katsman-Kuipers JE, et al. Cooperativity of RUNX1 and CSF3R mutations in severe congenital neutropenia: a unique pathway in myeloid leukemogenesis. *Blood*. 2014;123:2229–2237.
- Palmblad J, Höglund P. Ethnic benign neutropenia: a phenomenon finds an explanation. *Pediatr Blood Cancer*. 2018;65:e27361.
- Fragiadaki I, Papadakis S, Sevastaki G, et al. Increased frequency of the single nucleotide polymorphism of the DARC/ACKR1 gene associated with ethnic neutropenia in a cohort of European patients with chronic idiopathic neutropenia. *Am J Hematol*. 2020 April 3. [Epub ahead of print].
- Newburger PE. Autoimmune and other acquired neutropenias. *Hematology Am Soc Hematol Educ Program*. 2016;2016:38–42.
- Palmblad J, Dufour C, Papadaki HA. How we diagnose neutropenia in the adult and elderly patient. *Haematologica*. 2014;99:1130–1133.
- Mastrodemou S, Stalika E, Vardi A, et al. Cytotoxic T cells in chronic idiopathic neutropenia express restricted antigen receptors. *Leuk Lymphoma*. 2017;58:2926–2933.
- Malcovati L, Cazzola M. The shadowlands of MDS: idiopathic cytopenias of undetermined significance (ICUS) and clonal hematopoiesis of indeterminate potential (CHIP). *Hematology Am Soc Hematol Educ Program*. 2015;2015:299–307.
- Palmblad J, Nilsson CC, Höglund P, et al. How we diagnose and treat neutropenia in adults. *Expert Rev Hematol*. 2016;9:479–487.
- Nasri M, Ritter M, Mir P, et al. CRISPR/Cas9-mediated ELANE knockout enables neutrophilic maturation of primary hematopoietic stem and progenitor cells and induced pluripotent stem cells of severe congenital neutropenia patients. *Haematologica*. 2020;105:598–609.
- Rotulo GA, Beaupain B, Rialland F, et al. HSCT may lower leukemia risk in ELANE neutropenia: a before-after study from the French Severe Congenital Neutropenia Registry. *Bone Marrow Transplant*. 2020;1–9.
- Fiorredda F, Iacobelli S, van Biezen A, et al. Stem cell transplantation in severe congenital neutropenia: an analysis from the European Society for Blood and Marrow Transplantation. *Blood*. 2015;126:1885–1892.
- Dannenmann B, Nasri M, Welte K, et al. CRISPR/Cas9 genome editing of human-induced pluripotent stem cells followed by granulocytic differentiation. *Methods Mol Biol*. 2020;2115:471–483.
- Finch AJ, Hilcenko C, Basse N, et al. Uncoupling of GTP hydrolysis from eIF6 release on the ribosome causes Shwachman-Diamond syndrome. *Genes Dev*. 2011;25:917–929.
- Palmisani E, Miano M, Micalizzi C, et al. Clinical features and therapeutic challenges of cytopenias belonging to ALPS and ALPS-related (ARS) phenotype. *Br J Haematol*. 2019;184:861–864.
- Bizymi N, Bjelica S, Kittang AO, et al. Myeloid-derived suppressor cells in hematologic diseases: promising biomarkers and treatment targets. *HemaSphere*. 2019;3:e168.
- Touw IP. Game of clones: the genomic evolution of severe congenital neutropenia. *Hematology Am Soc Hematol Educ Program*. 2015;2015:1–7.
- Skokowa J, Lan D, Thakur BK, et al. NAMPT is essential for the G-CSF-induced myeloid differentiation via a NAD(+)-sirtuin-1-dependent pathway. *Nat Med*. 2009;15:151–158.
- Majewski P, Majchrzak-Gorecka M, Grygier B, et al. Inhibitors of serine proteases in regulating the production and function of neutrophil extracellular traps. *Front Immunol*. 2016;7:261.
- Dale DC, Bolyard AA, Steele LA, et al. Severe Chronic Neutropenia International Registry. Registries for study of nonmalignant hematologic diseases: the example of the Severe Chronic Neutropenia International Registry. *Curr Opin Hematol*. 2020;27:18–26.