

2008

Preclinical studies of Apogossypolone: a new nonpeptidic pan small-molecule inhibitor of Bcl-2, Bcl-X_L and Mcl-1 proteins in Follicular Small Cleaved Cell Lymphoma model

Alan A. Arnold

Wayne State University School of Medicine, aarnold@med.wayne.edu

Amro Aboukameel

Wayne State University School of Medicine, kameelo@karmanos.org

Jianyong Chen

University of Michigan Comprehensive Cancer Center, jiachen@umich.edu

Dajun Yang

Ascenta Therapeutics, Inc., dyang@Ascenta.com

Shaomeng Wang

University of Michigan Comprehensive Cancer Center, shaomeng@umich.edu

See next page for additional authors

Recommended Citation

Arnold *et al.* *Molecular Cancer* 2008, 7:20

doi:[10.1186/1476-4598-7-20](https://doi.org/10.1186/1476-4598-7-20)

Available at: <http://digitalcommons.wayne.edu/biomedcentral/149>

Authors

Alan A. Arnold, Amro Aboukameel, Jianyong Chen, Dajun Yang, Shaomeng Wang, Ayad Al-Katib, and Ramzi M. Mohammad

Research

Open Access

Preclinical studies of Apogossypolone: a new nonpeptidic pan small-molecule inhibitor of Bcl-2, Bcl-X_L and Mcl-1 proteins in Follicular Small Cleaved Cell Lymphoma model

Alan A Arnold¹, Amro Aboukameel¹, Jianyong Chen², Dajun Yang³, Shaomeng Wang², Ayad Al-Katib¹ and Ramzi M Mohammad*¹

Address: ¹Department of Internal Medicine, Division of Hematology/Oncology, Wayne State University School of Medicine, Detroit, Michigan, USA, ²Department of Internal Medicine and Medicinal Chemistry, University of Michigan Comprehensive Cancer Center, Ann Arbor, Michigan, USA and ³Ascenta Therapeutics, Inc., Malvern, Pennsylvania, USA

Email: Alan A Arnold - aarnold@med.wayne.edu; Amro Aboukameel - kameelo@karmanos.org; Jianyong Chen - jiachen@umich.edu; Dajun Yang - dyang@Ascenta.com; Shaomeng Wang - shaomeng@umich.edu; Ayad Al-Katib - aalkati@med.wayne.edu; Ramzi M Mohammad* - mohammad@karmanos.org

* Corresponding author

Published: 14 February 2008

Received: 28 November 2007

Molecular Cancer 2008, **7**:20 doi:10.1186/1476-4598-7-20

Accepted: 14 February 2008

This article is available from: <http://www.molecular-cancer.com/content/7/1/20>

© 2008 Arnold et al; licensee BioMed Central Ltd.

This is an Open Access article distributed under the terms of the Creative Commons Attribution License (<http://creativecommons.org/licenses/by/2.0>), which permits unrestricted use, distribution, and reproduction in any medium, provided the original work is properly cited.

Abstract

Elevated expression of anti-apoptotic Bcl-2 family proteins have been linked to a poor survival rate of patients with Follicular Lymphoma (FL). This prompted us to evaluate a very potent non-peptidic Small-Molecule Inhibitor (SMI) targeting Bcl-2 family proteins, Apogossypolone (ApoG2) using follicular small cleaved cell lymphoma cell line (WSU-FSCCL) and cell isolated from lymphoma patients. ApoG2 inhibited the growth of WSU-FSCCL significantly with a 50% growth inhibition of cells (IC₅₀) of 109 nM and decreased cell number of fresh lymphoma cells. ApoG2 activated caspases-9, -3, and -8, and the cleavage of Poly (ADP-ribose) polymerase (PARP) and Apoptosis Inducing Factor (AIF). In the WSU-FSCCL-SCID xenograft model, ApoG2 showed a significant anti-lymphoma effect, with %ILS of 84% in the intravenous and 63% in intraperitoneal treated mice. These studies suggest that ApoG2 can be an effective therapeutic agent against FL.

Introduction

Follicular Lymphoma (FL) is fifth leading diagnosed cancer estimated with over 63,000 new patients in 2007 within the United States. FL is the most common type of low grade lymphoma and the second most common sub-type of lymphoma worldwide. The natural history of FL has not changed over the last 3 decades with median survival ranging from 7–10 years; the disease is considered incurable using various anti-cancer agents [1-3]. Current treatment strategies are aimed at producing remissions, preserving vital organ function and enhancing patients' quality of life [4]. Phase II trials of CHOP followed by

Tositumomab/Iodine I-131 demonstrated progression free survival of 67% of patients [5]. Phase III trials of Rituximab shows improved progression free survival in relapsed/resistant FL and enhanced remission induction when used with CHOP [6], with these improvements in the treatment, to date there is not a cure except for a limited number of patients who present with localized disease. Therefore, developing targeted therapy to proteins such as Bcl-2 that prevent death of lymphoma cells is advantageous.

Bcl-2 plays an important role in the lymphomagenesis of FL. Bcl-2 was originally discovered in FL as a proto-oncogene involved in the t(14;18) chromosomal translocation [7-9]. This genetic event is found in more than 85% of FL. It has been shown that transfection of Bcl-2 into B-cell lines could increase cell viability and decrease apoptosis of lymphoma cells and additionally, confers resistance of these cells to chemotherapeutic drugs [10]. Thus, interfering with Bcl-2 function is hypothesized to lead to apoptosis of lymphoma cells. Therefore, Bcl-2 is a rational therapeutic target because of its role in regulating the apoptotic pathway.

Structural analysis of the binding clefts in Bcl-2 and Bcl-X_L using X-ray crystallography and NMR spectroscopy showed conserved similarity in the BH1, BH2, and BH3 domains. These domains create a hydrophobic surface pocket that may represent a binding site for pro-apoptotic members of the Bcl-2 family, such as Bax. The heterodimerization of Bcl-2 family proteins is believed to be pivotal to the anti-apoptotic function of these proteins. Furthermore, site-specific mutagenesis of BH1 and BH2 domains completely abrogates the anti-apoptotic activity of these proteins [11-13]. These studies suggest that this region could be a promising target for the use of SMIs to induce apoptosis.

Previous studies in this lab using the SMI (-)-gossypol has shown significant growth inhibition *in vitro* and tumor growth inhibition *in vivo* in a diffuse large cell lymphoma model [14]. With a structural based screening approach, TW-37 a more potent SMI to Bcl-2, was discovered [15]. Subsequently, we have confirmed that TW-37 has anti-lymphoma properties in our diffuse large cell lymphoma model [16]. More recently, we developed a new non-peptidic SMI, ApoG2, which binds like the previous SMIs but with a considerably lower K_i. ApoG2 is a derivative of (-)-gossypol that binds to the Bcl-2 family of proteins in the low nanomolar range with a K_i of 35 and 25 nmol/L for Bcl-2 and Mcl-1, respectively and a K_i of 660 nmol/L for Bcl-X_L [17]. Therefore, the new SMI, ApoG2, could in theory inhibit the anti-apoptotic function of Bcl-2, Bcl-X_L and Mcl-1 more efficiently and induce apoptosis in FL cells. In this study, we evaluated the effect of ApoG2 on growth of malignant lymphoid cells *in vitro*, its ability to induce apoptosis as well as its anti-lymphoma activity *in vivo* using a SCID mouse xenograft model of FSCCL.

Materials and methods

Cell Culture and Reagents

The origin of human FL B cell line WSU-FSCCL was described previously [18]. The cell line was maintained in RPMI-1640 medium containing 10% heat-inactivated fetal bovine serum (FBS), 1% L-glutamine, 100 U/ml penicillin G and 100 µg/ml streptomycin. Cells were incu-

bated at 37°C in a humidified incubator with 5% CO₂. Fresh samples from patients with pre-B-acute lymphoblastic leukemia (Pre-B-ALL), mantle cell lymphoma (MCL), marginal zone lymphoma (MZL), and chronic lymphocytic leukemia (CLL) were isolated using Lymphoprep (Axis-Shield, Oslo, Norway). ApoG2 was synthesized by modifying (-)-gossypol's two aldehyde groups and prepared at a stock concentration of 1 mM.

Western Blot Analysis

Proteins obtained from extracts were resolved using 12% SDS-PAGE and transferred to Hybond C-extra membranes (Amersham Life Science, Arlington Heights, IL). Membranes were blocked with 5% milk in Tris Buffer Saline containing 0.05% Tween 20 (TBST) for 1 h at 25°C and then incubated with unlabeled primary antibodies in 2% Bovine Serum Albumin in TBST (1:1000 dilutions in BSA-TBST) overnight at 4°C. Following incubation, membranes were washed in TBST and incubated with corresponding horseradish peroxidase-conjugated secondary antibody (Santa Cruz Biotechnology, Santa Cruz, CA; 1:5000 dilution in 5% milk-TBST) for 1 h at 25°C and then washed before proteins were visualized using an ECL assay (Amersham Pharmacia Biotech, Inc., Piscataway, NJ). Primary antibodies specific for Bcl-2, Bcl-X_L, Bax, and Mcl-1 (Santa Cruz Biotechnology, Santa Cruz, CA) were used. Primary antibodies specific for caspase-3, -9, PARP and AIF were obtained from Cell Signaling, (Danvers, MA). Protein concentrations were determined using the Micro BCA protein assay (Pierce Chemical Company, Rockford, IL). Quantitation of bands: Values are fold increase of intensity over control based on percentage Integrated Density Value (IDV), using AlphaEaseFC (San Leandro, CA).

Detection of apoptosis

ApoG2 effectiveness to induce apoptosis was quantified using two DNA intercalating dyes. 3,6-bis [Dimethylamino] acridinium chloride hemi-[zinc chloride] (termed "acridine orange" or AO) and 3,8-diamino-5-ethyl-6-phenyl-phenanthridine bromide (termed "ethidium bromide" or "EB") were used (Invitrogen, Carlsbad, California). AO stains DNA bright green allowing visualization of the nuclear chromatin pattern. EB stains DNA orange but is excluded by viable cells. Dual staining allows separate enumeration of populations of viable-non-apoptotic, early-apoptotic, late-apoptotic and necrotic cells. The assay was performed by combining 100 µg/µl of AO and 100 µg/µl of EB in PBS. WSU-FSCCL cells and primary lymphocytes from patients were incubated for the indicated times and concentrations, centrifuged at 2000 g for 5 m at 4°C, resuspended in 50 µl of PBS, with a resultant of 20 µl of suspension being counted using a Nikon Fluorescent microscope. For each sample at least 200 cells were counted.

Flow cytometric analysis of apoptosis

Apoptosis was determined by the flow cytometric measurement of phosphatidylserine exposure using Annexin V FITC and Propidium Iodide stain. Cells were grown in the presence or absence of ApoG2 and then centrifuged at $2000 \times g$ for 5 min. The cells were then resuspended in PBS and stained with fluorescent conjugates of Annexin V (BioVision, Mountain View, CA) for 1 hour and propidium iodide for 30 min, and then analyzed on a FACScan machine (BD, San Jose, CA).

Detection of Caspase Activity

WSU-FSCCL cells exposed to 0.35 and 3.50 μM ApoG2 for 0 to 72 hrs were incubated on ice for 30 minutes in cell lysis buffer (Sigma-Aldrich, St. Louis, MO). The supernatant after centrifugation at 14,000 g at 4°C was collected and proteins were quantified according to the bicinchoninic acid protein assay methodology (Pierce Chemical, Rockford, IL.). A total of 50 μg protein in a volume of 50 μl cell lysis mixture was resuspended on ice as triplicates in a 96-well plate; 50 μl of 2 \times reaction buffer containing 10 mM DTT was added to each sample (MBL International, Woburn, MA); 50 μM final concentration substrates for caspase-3 (DEVD-pNA) and caspase-9 (LEHD-pNA; MBL International, Woburn, MA) were added to each sample for a total volume of 100 μl and incubated for 180 m at 37°C. Free pNA released from the labeled synthetic substrate on cleavage by active caspase was measured on a fluorescence plate reader (Molecular Devices, Sunnyvale, CA) at 405 nm.

SCID/Human Xenograft

Female ICR SCID mice were obtained from Taconic Laboratories (Germantown, NY) and were housed and treated in the Wayne State University School of Medicine under an approved protocol. Four week old mice were injected intraperitoneally (i.p.) with 5×10^6 WSU-FSCCL cells. ApoG2 was injected 25 mg/kg QD \times 5 days either IP or intravenously (i.v.). Mice were observed daily and euthanized when they appeared ill. Animals' activity, weight and survival were monitored three times a week; mice were sacrificed when they developed hind region paralysis, had decreased activity and weight loss of 15% or more, or death was felt to be imminent. Necropsy was carried out and the extent of macroscopic disease was identified with all major organs being taken for microscopic pathological examination. Major organs included the brain, femur (for bone marrow), heart, kidney, liver, lungs, pancreas, retroperitoneal fat, and spleen. Peripheral blood smears were examined for evidence of circulating lymphoma cells.

Survival curves were created using the product limit of Kaplan and Meier, and compared using the log-rank test. The end point for assessing anti-lymphoma activity was

calculated by percent increase in host life span (%ILS). %ILS = $100 \times \text{MDD (median day of death of the treated tumor-bearing mice)} - (\text{MDD of tumor-bearing control mice}) / \text{MDD of the tumor bearing control mice}$.

Statistical analysis

Apoptosis induction by AnnexinV/PI stains and AO/EB were compared to control by the student t-test. Survival functions were estimated using the Kaplan-Meier method and compared by the log-rank test. P-values < 0.05 were considered statistically significant. All statistical analyses were evaluated using GraphPad Prism 4 (San Diego, CA)

Results

Effect of ApoG2 on WSU-FSCCL Cells

The structure of ApoG2 is shown in figure 1A. To study if ApoG2 is effective in our FL cell line, WSU-FSCCL, we determined the baseline expression levels of anti-apoptotic, Bcl-2, Bcl-X_L and Mcl-1 and expression levels of pro-apoptotic, Bax, Bak, and Bad proteins (Fig. 1B). Our western blots show that our FL cell line has high expression of anti-apoptotic proteins (Bcl-2, Bcl-X_L and Mcl-1) and pro-apoptotic protein Bax, but low expression of pro-apoptotic proteins (Bak and Bad). This profile predicts that ApoG2 should be an effective agent in this model. To study cytotoxic effects of ApoG2, WSU-FSCCL cells were

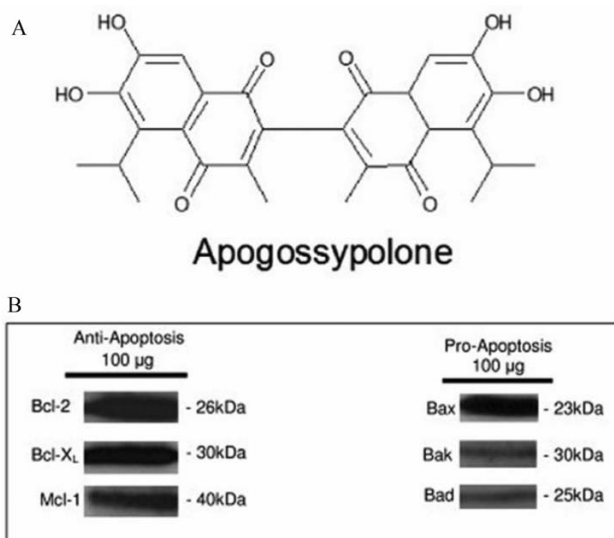


Figure 1
The chemical structure of ApoG2; an analogue of (-)-gossypol (A). Baseline endogenous expression of anti-apoptotic (Bcl-2, Bcl-X_L and Mcl-1) and pro-apoptotic (Bax, Bak, and Bad) proteins in WSU-FSCCL cell line (B). Protein obtained from cell lysates (100 μg) of WSU-FSCCL cells were separated on a 12% SDS-PAGE. Proteins were immunoblotted using specific primary antibodies to Bcl-2, Bcl-X_L, Mcl-1, Bax, Bak, and Bad. Primary antibodies were diluted in 2% BSA. Secondary HRP conjugates were diluted in 5% milk.

exposed to increasing concentrations of the SMI for 24 to 72 h. We exposed WSU-FSCCL cells to ApoG2 at concentrations of 0.04, 0.08, 0.18, 0.35, 0.70, 1.75, 3.50, 5.00, and 10.00 μM . ApoG2 significantly inhibited the growth of WSU-FSCCL in a concentration and time dependent manner (Fig. 2A). For example, ApoG2 at a concentration of 10.00 μM ApoG2 inhibited the growth of WSU-FSCCL cells by 90% at all incubation times. Plotting the log of the ApoG2 concentrations, we calculated an IC_{50} of 109.2 nM at 72 h (Fig. 2B). There was also a time and concentration dependent increase in apoptosis, as enumerated by AO/EB. ApoG2 induced a statistically significant increase in apoptosis over control at 48 and 72 h, with all concentrations; $P = 0.0034, 0.0162, 0.0067, 0.0456$ and 0.0322 . Complete apoptosis was observed with ApoG2 concentration of 5.0 μM and 10 μM 72 h (Fig. 2C). We have confirmed apoptosis by Annexin V/PI staining; statistically significant apoptosis was induced by ApoG2 ($P = 0.0324$),

with 15% and 20% positivity at 48 and 72 h, respectively, compared to control (Fig. 2D).

Effect of ApoG2 on Primary Fresh Cases

The IC_{50} of ApoG2 at 72 h was determined on MCL, MZL, and CLL fresh patient samples. In general, they fall into a susceptible group of Pre-B-ALL and MCL or a less susceptible group of MZL and CLL. Pre-B-ALL sample showed an IC_{50} of 0.50 μM at 24 h. The MCL sample showed an IC_{50} of 0.70 μM . MZL patient samples were more resistant and showed an IC_{50} of 1.75 μM . CLL patient samples were resistant to ApoG2 having a range of IC_{50} from 1.35 to 3.50 μM (Fig. 3A). ApoG2 induced at least a 1.5-fold increase in apoptosis over control with concentration of 3.5 μM (Fig. 3B). Conversely, exposure of normal peripheral blood lymphocytes to 0.35, 0.50 and 1.00 μM ApoG2 did not show any statistically significant cell death at 72 h (Fig. 3C).

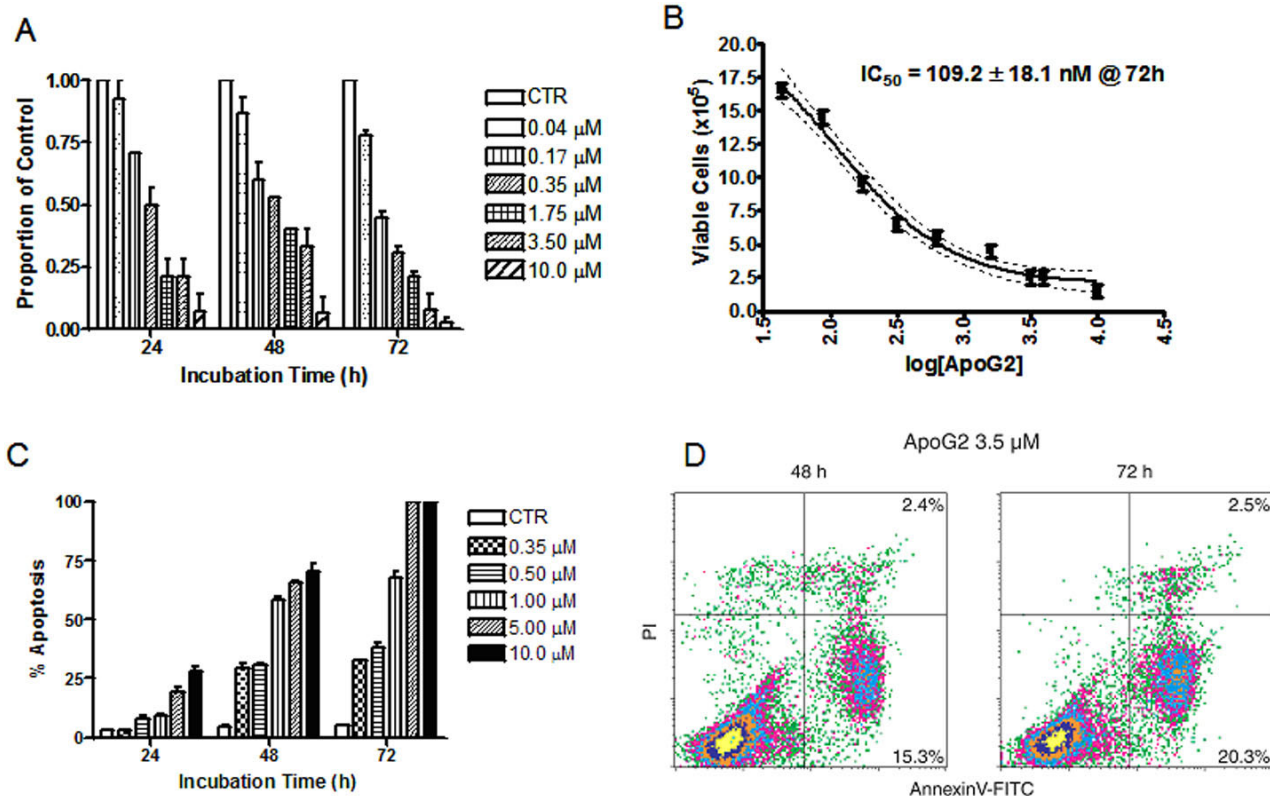
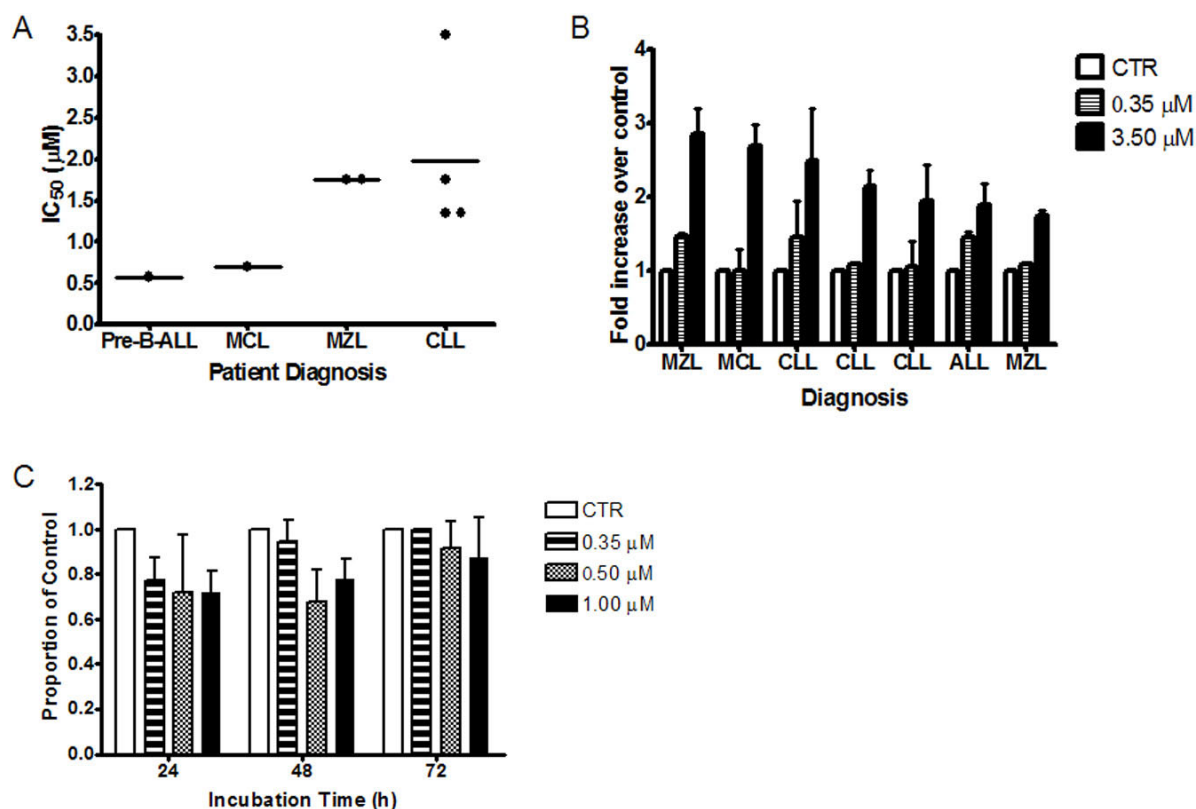


Figure 2

Growth inhibition, IC_{50} and apoptosis in WSU-FSCCL cells expose to ApoG2. WSU-FSCCL cells were seeded in 24 well culture plates at a density of 2×10^5 cells per 1 mL of RPMI 1640 + 10% FBS. ApoG2 was added at 0.04 μM to 10.0 μM concentrations and plates were incubated at 37°C in CO_2 incubator for 24 to 72 hours. Trypan blue exclusion dye was used to determine viable cells (A). Fifty percent cell inhibition of viable cells was calculated from trypan blue exclusion assay, $\text{IC}_{50} = 109.2 \pm 18.1$ nM at 72 h (B). AO/EB was quantitated by counting several fields of cells on frosted slides (C). Counting was performed using Nikon light and fluorescent microscope. AnnexinV stain was used to confirm percentage of apoptotic cells incubated for 48 and 72 h (D).

**Figure 3****Cell viability and apoptosis of patient samples, and cell viability of peripheral blood lymphocytes exposed to ApoG2.**

Patient samples (A,B) and peripheral blood lymphocytes from a normal donor (C) were seeded in 24 well culture plates at a density of 4×10^5 cells per 1 mL of RPMI 1640 + 10% FBS. ApoG2 was added at 0.35 μ M to 3.50 μ M concentrations and plates were incubated at 37°C in CO₂ incubator for 24 to 72 hours. Trypan blue exclusion dye was used to determine viable cells. Trypan blue exclusion was used to determine viable cells (A and C). Each dot represents a different patient. (-) is the mean of ApoG2 concentration that causes 50 percent growth inhibition at 72 h, Pre-B-ALL represents 24 h only (A). AO/EB was quantitated by counting fields of cells on frosted slides (B).

Effect of ApoG2 on the activation of Caspases in WSU-FSCCL cells

WSU-FSCCL was exposed to ApoG2 at 0.35 and 3.50 μ M concentrations. ApoG2 at 3.50 μ M showed a 3-fold increase in the activation of caspase-9 at 72 hrs (Fig. 4A). ApoG2 at 3.50 μ M demonstrated a 2-fold increase of caspase-3 activation for all incubation periods (Fig. 4B). To determine if caspase cleavage in WSU-FSCCL occurred, cells were exposed to ApoG2 at 0.35, 0.70, 1.75 and 3.50 μ M and incubated at indicated times. Greater than 3-fold increase of caspase-9 cleavage was detected at concentrations greater than 0.70 μ M with 24 h incubation time. Thirty-three fold induction over control of caspase-9 cleavage band was shown at 3.50 μ M at 72 h (Fig. 4C). The next downstream protein of the caspase cascade is caspase-3. ApoG2 induced caspase-3 cleavage of 2-fold with concentrations of 0.35 μ M and a more intense cleavage band indicating a 25-fold increase was detected at 3.5 μ M at 24 h (Fig. 4D). Previous studies have suggested that cas-

pase-3 is also capable of eliciting cleavage and activation of the upstream initiator caspase-8, which may potentiate a feedback amplification loop with further activation of other death substrates. Caspase-8 cleavage was shown to have a 9-fold increase over control at 3.50 μ M with 48 h incubation and 8-fold or higher induction at concentrations greater than 0.35 μ M with a 72 h incubation period (Fig. 4E).

ApoG2 Induced Activation of PARP and AIF in the Apoptotic Pathway

Caspase-3 is primarily responsible for the cleavage of PARP during cell death. WSU-FSCCL was exposed to ApoG2 at 0.35, 0.70, 1.75 and 3.50 μ M and incubated for 24, 48 and 72 hrs. As expected, PARP cleavage was shown at all concentrations and incubations periods. Cleaved bands greater than 5-fold over the control were shown at 3.5 μ M with all incubation periods (Fig. 5A).

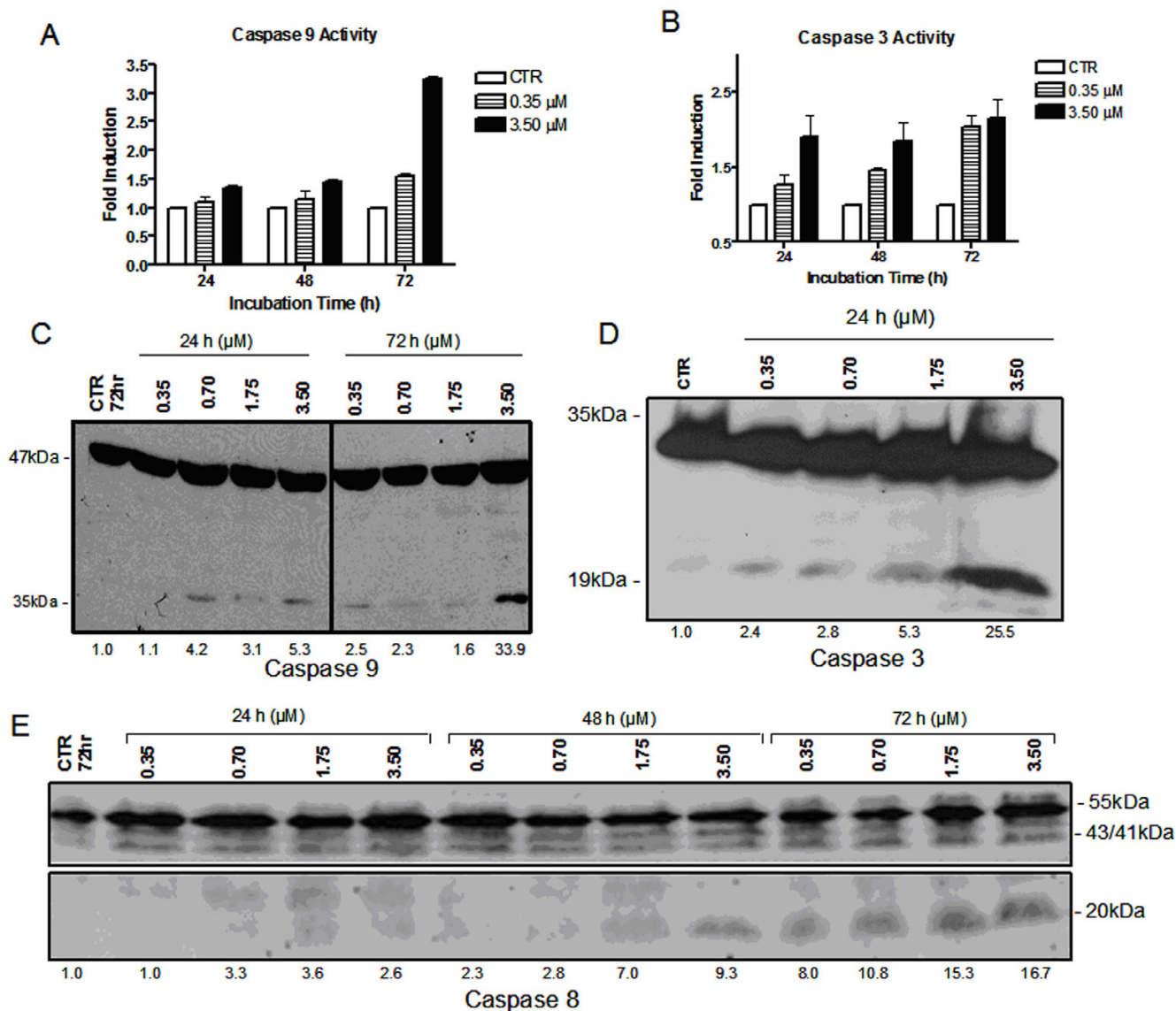
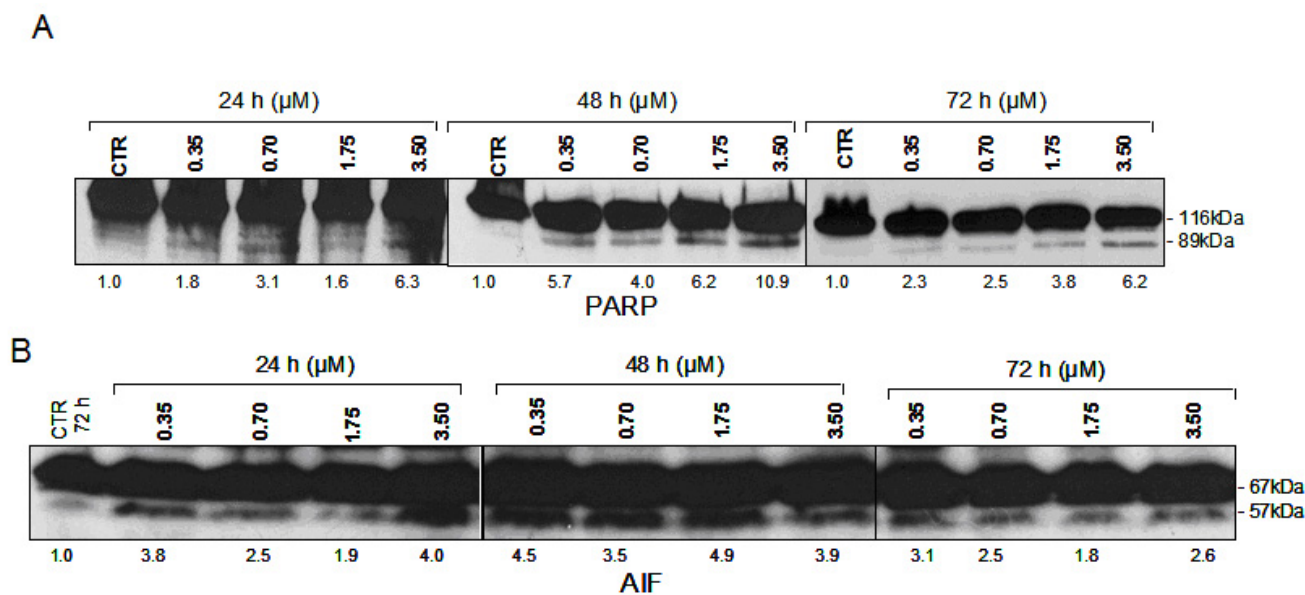


Figure 4
Induction of caspase activation and caspase cleavage in WSU-FSCCL cells exposed to ApoG2. Caspase-9 and -3 colorimetric activity assay on WSU-FSCCL cells exposed to ApoG2 at indicated times and concentrations. 50 μ g of protein from cell lysates were incubated in triplicate with the corresponding substrates for caspase-9 (LEHD-pNA) caspase-3 (DEVD-pNA). Free pNA is released from the labeled synthetic substrate on cleavage by active caspase and analyzed (A and B). Protein obtained from cell lysates (100 μ g) of WSU-FSCCL were separated on a 12% SDS-PAGE. Proteins were immunoblotted using specific antibodies to caspase-9, -3, and -8. WSU-FSCCL cells exposed to ApoG2 at indicated times and concentrations (0.35 μ M to 3.50 μ M) (C, D, and E). Primary antibodies were diluted in 2% BSA. Secondary HRP conjugates were diluted in 5% milk. Quantitation of bands: Values are fold increase of intensity over control based on percentage Integrated Density Value (IDV).

PARP can release apoptosis-inducing factor (AIF), which induces chromatin condensation and large-scale DNA fragmentation when released into the cytosol [19]. Similar to PARP, AIF cleavage was shown at concentrations greater than 0.35 μ M. Cleaved bands of AIF greater than 2-

fold and (up to 4-fold) were shown at 3.5 μ M at 24 hrs (Fig. 5B).

**Figure 5**

Induction of PARP and AIF cleavage in WSU-FSCCL cells expose to ApoG2. WSU-FSCCL cells were exposed to ApoG2 concentrations 0.35 μ M to 3.50 μ M for 24 to 72 h. Protein obtained from cell lysates (100 μ g) of WSU-FSCCL cells were separated on a 12% SDS-PAGE. Proteins were immunoblotted using specific primary antibodies to PARP (A) and AIF (B). Primary antibodies were diluted in 2% BSA. Secondary HRP conjugates were diluted in 5% milk. Quantitation of bands: Values are fold increase of intensity over control based on percentage Integrated Density Value (IDV).

Determination of Anti-lymphoma Effect of ApoG2 in SCID Mice

Previous studies in this laboratory indicated that the MTD for ApoG2 could not be determined. We tested up to 800 mg/kg iv of ApoG2; testing beyond 800 mg/kg were not attempted, due to cost and other logistical issues. For this efficacy trial, 5×10^6 WSU-FSCCL cells were injected into the intraperitoneal cavity of 7 mice per group. Seven days post WSU-FSCCL inoculation, 25 mg/kg of ApoG2 was injected into each animal either intravenously (i.v.) or intraperitoneally (i.p.) over 5 days. After 105 days, 42% of the i.v.-treated animals, and 60% of the i.p.-treated animals had died from FL (Fig. 6A). Statistical comparison of survival curves for i.v. treatment and untreated control show a chi square of 8.005 and $P = 0.0047$. Statistical comparison of survival curves for i.p. treatment and untreated control show a chi square of 4.397 and $P = 0.0360$ (Fig 6A). Pathological evaluation showed that retroperitoneal lymph nodes were diffusely replaced by tumor cells in mice that died (data not shown). The effectiveness of ApoG2 was further demonstrated by bone marrow examination which was completely replaced by tumor cells by day 34 in control animals (Fig. 6B). In contrast, ApoG2 treated mice showed normal bone marrow with no apparent tumor infiltration (Fig. 6C & 6D).

Discussion

FL has been increasing in incidence over the past three decades and is now the fifth most common malignancy in the United States [20]. There are many approaches to the treatment of FL, but the goal of therapy has been to maintain the best quality of life and treat when a patient is at "high risk" or the disease progresses. Standard chemotherapy regimens directed towards these low-grade lymphomas still lack complete curative effects. This may be in part due to the overexpression of Bcl-2, a key molecule of resistance in indolent lymphoma. Overexpression of Bcl-2 has been implicated to play a significant role in the clinical outcome of FL patients [21]. A number of approaches have been sought to target overexpression of Bcl-2 in FL, e.g. downregulation of Bcl-2 protein via antisense oligonucleotides [18,22-24]. Most recently, hydrophobic groove of the Bcl-2 family of anti-apoptotic proteins has become a very attractive target for the design of SMIs. SMIs filling the hydrophobic groove mimic cognate proteins such as Bax and Bid. SMIs directed against BH3 domains have been categorized into at least eight different chemical classifications [25]. Laboratories, including this one, have been in the search to find novel small-molecule inhibitors to Bcl-2 [15,26-29]. Gossypol has been used as an anti-cancer agent against prostate cancer, metastatic adrenal cancer and many other cancers before the BH3 mimetic activity was discovered [30,31]. This discovery

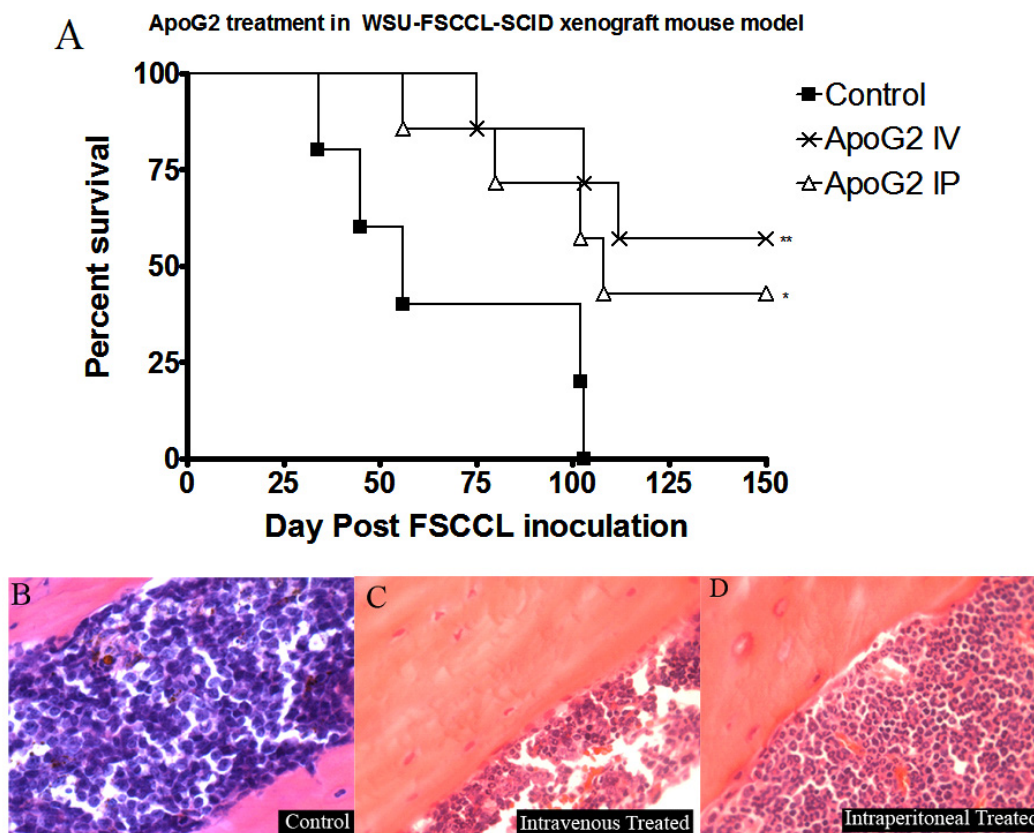


Figure 6
Survival of WSU-FSCCL-bearing SCID mice according to ApoG2 treatment and H & E stains of bone marrow sections. WSU-FSCCL cells were injected into the intraperitoneal cavity at 5×10^6 cells. 25 mg/kg QD \times 5 of ApoG2 was injected intravenously or intraperitoneally on day 7 post inoculation. Statistical comparison of survival curves for i.v. treatment and untreated control show a chi square of 8.005 and $P = 0.0047$. Statistical comparison of survival curves for i.p. treatment and untreated control show a chi square of 4.397 and $P = 0.0360$ (A). Replacement of the bone marrow with WSU-FSCCL cells in the control mouse (B). Negative bone marrow of intravenous (C) and intraperitoneal (D) treatment with ApoG2.

has shown that (-)-gossypol, the active enantiomer of gossypol, binds to anti-apoptotic members of the Bcl-2 family, Bcl-2, Bcl-X_L and Mcl-1, with nanomolar affinities and this active enantiomer has been tested in clinical trials for treatment of patients with advanced malignancies [32].

In clinical trials, gossypol has been associated with side effects, such as emesis and diarrhea, because of the two reactive aldehyde-groups [33]. ApoG2 has been designed and synthesized with the reactive groups completely removed in order to minimize side effects. In addition, ApoG2 has superior stability under both stress and normal conditions compared to (-)-gossypol [34].

It is notable that our study is the first on ApoG2 in FL. The goals of new agents such as ApoG2, are to have higher binding affinity to its targets; ApoG2 has greater than 8-fold binding affinity to Bcl-2 over its predecessors TW-37

and (-)-gossypol [16,17]. In this study, we have shown a potent anti-lymphoma effect on FL. ApoG2 shows an IC₅₀ of 9- and 18-fold lower when compared to TW-37 or gossypol. When compared to HA14-1, which is a SMI to Bcl-2 used against leukemia cell lines HL60 and K562 [29], ApoG2 has a IC₅₀ which is 200-fold lower. The SMI ABT-737 has a considerably lower IC₅₀ (8 and 30 nM) when used against FL cell lines, but ABT-737 does not bind to Mcl-1 and thus Mcl-1 expression could result in resistance. In comparison, ApoG2 targets all these three anti-apoptotic proteins [27,35,36]. In our study, ApoG2 is effective against FL, pre-B-acute lymphoblastic leukemia, mantle cell lymphoma, marginal zone lymphoma, as well as chronic lymphocytic leukemia. Therefore, ApoG2 could potentially be a more effective drug in the lymphoma clinic spanning a greater array of patients.

With the binding of ApoG2 to Bcl-2 family of proteins, it would be expected that ApoG2 would lead to activation of downstream apoptotic proteins. The mechanism of action of ApoG2 has not been elucidated in FL. We show here that ApoG2 can activate the initiator caspase-9, and the effector caspase-3, and induce caspase cleavage in nanomolar concentrations. Moreover, ApoG2 can lead to the activation of caspase-8 which serves as amplification loop together with caspase-3 [37,38]. PARP and AIF have been implicated in the final stages of apoptosis. They play a role in the chromatin condensation and DNA fragmentation. We show that ApoG2 activates PARP and AIF in the nanomolar range.

These findings clearly demonstrate that ApoG2 can activate the Bcl-2 apoptotic pathway *in vitro*. The exact mechanism of action of ApoG2 is unclear. Likely mechanisms are that ApoG2 binds to Bcl-2 (or Mcl-1, Bcl-X_L, A1, Bcl-w) and prevents its association with BH3-only pro-apoptotic proteins, thus unleashing the pro-apoptotic proteins to participate in the apoptotic response. Work in our laboratory is being done to further elucidate the mechanism of ApoG2 action.

Many agents targeting the Bcl-2 family were shown to have activity *in vitro*. However, the main goal of our research endeavor is to find out if ApoG2 can make its way into clinical trials. Here, we tested the anti-lymphoma activity of ApoG2 *in vivo*. The endpoint for treatment efficacy is survival of the mice bearing the human FL cells. Our study showed that regardless of route of injection (i.p. or i.v.), ApoG2 could significantly increase the life span of lymphoma-bearing SCID mice by at least 42% (Fig. 6A). Moreover, ApoG2 was safe and well tolerated up to 800 mg/kg with no weight loss in all treated animals. ApoG2 has an undetermined MTD, and a large therapeutic window of 25 to 800 mg/kg; with effective dose of only 25 mg/kg; compared to ABT-737, that has a therapeutic window of 25 to 100 mg/kg, with an undetermined MTD [39].

In closing, we have shown that ApoG2 can be a potential novel agent against FL. Our data suggest that ApoG2 also could be used in several different types of lymphoid malignancies. ApoG2 in this study does show efficacy for treatment of FL as a single agent; it can prove to be even more effective when used in combination with standard chemotherapy.

Abbreviations

ApoG2 = Apogossypolone; SMI = Small-Molecule Inhibitor; IC₅₀ = concentration of agent with fifty percent of growth inhibition; PI = propidium iodide; ILS = increase in life span; NHL = Non-Hodgkin's Lymphoma; FL = Follicular Lymphoma; CHOP chemotherapy = C-cyclophos-

phamide, H-doxorubicin Hydrochloride, O-ncovon, P-prednisone; PARP = Poly (ADP-ribose) polymerase; AIF = Apoptosis Inducing Factor; ALL = acute lymphoblastic leukemia; MCL = mantle cell lymphoma; MZL = marginal zone lymphoma; CLL = chronic lymphocytic leukemia.

Competing interests

Dajun Yang has competing interests with Ascenta Therapeutics Inc., as Senior Vice President of Research, shareholder and co-founder.

Ascenta Therapeutics Inc., has licensed the technology related to apogossypolone (ApoG2) from the University of Michigan. Both the University of Michigan and Shaomeng Wang own equity in Ascenta and Shaomeng Wang also serves as a consultant for Ascenta.

Acknowledgements

Grant support: Leukemia and Lymphoma Society grant 6028-8 (R.M. Mohammad); National Institute of Health grant R01 CA109389 (R.M. Mohammad; Department of Defense Breast Cancer Program grant BC0009140 (S. Wang); National Institute of Health grant P30 CA22453-20; and NIH/National Institute of General Medical Sciences (NIGMS) grant GM058905B (J. Dunbar – Initiative for Maximizing Student Diversity (IMSD) – program director). We also thank Drs. Anton-Scott Goustin and Ben Chen for their valuable input on ApoG2.

References

1. Rogers B: **Looking at lymphoma and leukemia.** *Nursing* 2005, **35(7)**:56-63; quiz 63-4.
2. Ganti AK, Bociek RG, Bierman PJ, Enke CA, Vose JM, Armitage JO: **Follicular lymphoma: expanding therapeutic options.** *Oncology (Williston Park)* 2005, **19(2)**:213-28; discussion 228, 233-6, 239.
3. Fisher RI, LeBlanc M, Press OW, Maloney DG, Unger JM, Miller TP: **New treatment options have changed the survival of patients with follicular lymphoma.** *J Clin Oncol* 2005, **23(33)**:8447-8452.
4. Sacchi S, Pozzi S, Marcheselli L, Bari A, Luminari S, Angrilli F, Merli F, Vallisa D, Baldini L, Brugiatelli M: **Introduction of rituximab in front-line and salvage therapies has improved outcome of advanced-stage follicular lymphoma patients.** *Cancer* 2007, **109(10)**:2077-2082.
5. Press OW, Unger JM, Brazier RM, Maloney DG, Miller TP, Leblanc M, Fisher RI: **Phase II trial of CHOP chemotherapy followed by tositumomab/iodine I-131 tositumomab for previously untreated follicular non-Hodgkin's lymphoma: five-year follow-up of Southwest Oncology Group Protocol S9911.** *J Clin Oncol* 2006, **24(25)**:4143-4149.
6. van Oers MH, Klasa R, Marcus RE, Wolf M, Kimby E, Gascoyne RD, Jack A, Van't Veer M, Vranovsky A, Holte H, van Glabbeke M, Teodorovic I, Rozewicz C, Hagenbeek A: **Rituximab maintenance improves clinical outcome of relapsed/resistant follicular non-Hodgkin lymphoma in patients both with and without rituximab during induction: results of a prospective randomized phase 3 intergroup trial.** *Blood* 2006, **108(10)**:3295-3301.
7. Raghoebier S, Broos L, Kramer MH, van Krieken JH, Kluin-Nelemans JC, van Ommen GJ, Kluin P: **Histological conversion of follicular lymphoma with structural alterations of t(14;18) and immunoglobulin genes.** *Leukemia* 1995, **9(10)**:1748-1755.
8. Basu A, Haldar S: **The relationship between Bcl2, Bax and p53: consequences for cell cycle progression and cell death.** *Mol Hum Reprod* 1998, **4(12)**:1099-1109.
9. Staudt LM: **A closer look at follicular lymphoma.** *N Engl J Med* 2007, **356(7)**:741-742.

10. Klasa RJ: **Targeting the proapoptotic factor Bcl-2 in non-Hodgkin's lymphoma.** *Oncology (Williston Park)* 2004, **18(13 Suppl 10)**:25-31.
11. Muchmore SW, Sattler M, Liang H, Meadows RP, Harlan JE, Yoon HS, Nettesheim D, Chang BS, Thompson CB, Wong SL, Ng SL, Fesik SW: **X-ray and NMR structure of human Bcl-xL, an inhibitor of programmed cell death.** *Nature* 1996, **381(6580)**:335-341.
12. Aritomi M, Kunishima N, Inohara N, Ishibashi Y, Ohta S, Morikawa K: **Crystal structure of rat Bcl-xL. Implications for the function of the Bcl-2 protein family.** *J Biol Chem* 1997, **272(44)**:27886-27892.
13. Yin D, Zhou H, Kumagai T, Liu G, Ong JM, Black KL, Koeffler HP: **Proteasome inhibitor PS-341 causes cell growth arrest and apoptosis in human glioblastoma multiforme (GBM).** *Oncogene* 2005, **24(3)**:344-354.
14. Mohammad RM, Wang S, Aboukameel A, Chen B, Wu X, Chen J, Al-Katib A: **Preclinical studies of a nonpeptidic small-molecule inhibitor of Bcl-2 and Bcl-X(L) [(-)-gossypol] against diffuse large cell lymphoma.** *Mol Cancer Ther* 2005, **4(1)**:13-21.
15. Wang G, Nikolovska-Coleska Z, Yang CY, Wang R, Tang G, Guo J, Shangary S, Qiu S, Gao W, Yang D, Meagher J, Stuckey J, Krajewski K, Jiang S, Roller PP, Abaan HO, Tomita Y, Wang S: **Structure-based design of potent small-molecule inhibitors of anti-apoptotic Bcl-2 proteins.** *J Med Chem* 2006, **49(21)**:6139-6142.
16. Mohammad RM, Goustin AS, Aboukameel A, Chen B, Banerjee S, Wang G, Nikolovska-Coleska Z, Wang S, Al-Katib A: **Preclinical studies of TW-37, a new nonpeptidic small-molecule inhibitor of Bcl-2, in diffuse large cell lymphoma xenograft model reveal drug action on both Bcl-2 and Mcl-1.** *Clin Cancer Res* 2007, **13(7)**:2226-2235.
17. Mohammad R Young, D., Chen, B., Aboukameel, A., Wang, G., Chen, J., Nikolovska-Coleska, Z., Wang, R., Al-Katib, A., Wang, S.: **ApoG2, a potent, non-toxic small-molecule inhibitor of Bcl-2 family: A preclinical trial in lymphoma.** *AACR* 2006.
18. Mohammad RM, Mohamed AN, Smith MR, Jawadi NS, al-Katib A: **A unique EBV-negative low-grade lymphoma line (WSU-FSCCL) exhibiting both t(14;18) and t(8;11).** *Cancer Genet Cytogenet* 1993, **70(1)**:62-67.
19. Susin SA, Lorenzo HK, Zamzami N, Marzo I, Snow BE, Brothers GM, Mangion J, Jacotot E, Costantini P, Loeffler M, Larochette N, Goodlett DR, Aebbersold R, Siderovski DP, Penninger JM, Kroemer G: **Molecular characterization of mitochondrial apoptosis-inducing factor.** *Nature* 1999, **397(6718)**:441-446.
20. Groves FD, Linet MS, Travis LB, DeVesa SS: **Cancer surveillance series: non-Hodgkin's lymphoma incidence by histologic subtype in the United States from 1978 through 1995.** *J Natl Cancer Inst* 2000, **92(15)**:1240-1251.
21. Schmitt C, Grundt A, Buchholtz C, Scheuer L, Benner A, Hensel M, Ho AD, Leo E: **One single dose of rituximab added to a standard regimen of CHOP in primary treatment of follicular lymphoma appears to result in a high clearance rate from circulating bcl-2/IgH positive cells: Is the end of molecular monitoring near?** *Leuk Res* 2006, **30(12)**:1563-1568.
22. Mohammad R, Abubakr Y, Dan M, Aboukameel A, Chow C, Mohamed A, Hamdy N, Al-Katib A: **Bcl-2 antisense oligonucleotides are effective against systemic but not central nervous system disease in severe combined immunodeficient mice bearing human t(14;18) follicular lymphoma.** *Clin Cancer Res* 2002, **8(4)**:1277-1283.
23. Smith MR, Abubakr Y, Mohammad R, Xie T, Hamdan M, al-Katib A: **Antisense oligodeoxyribonucleotide down-regulation of bcl-2 gene expression inhibits growth of the low-grade non-Hodgkin's lymphoma cell line WSU-FSCCL.** *Cancer Gene Ther* 1995, **2(3)**:207-212.
24. Ramanarayanan J, Hernandez-Ilizaliturri FJ, Chanan-Khan A, Czuczman MS: **Pro-apoptotic therapy with the oligonucleotide Genasense (oblimersen sodium) targeting Bcl-2 protein expression enhances the biological anti-tumour activity of rituximab.** *Br J Haematol* 2004, **127(5)**:519-530.
25. Zhai D, Jin C, Satterthwait AC, Reed JC: **Comparison of chemical inhibitors of antiapoptotic Bcl-2-family proteins.** *Cell Death Differ* 2006, **13(8)**:1419-1421.
26. Zhang Z, Jin L, Qian X, Wei M, Wang Y, Wang J, Yang Y, Xu Q, Xu Y, Liu F: **Novel Bcl-2 inhibitors: Discovery and mechanism study of small organic apoptosis-inducing agents.** *Chembiochem* 2007, **8(1)**:113-121.
27. Bruncko M, Oost TK, Belli BA, Ding H, Joseph MK, Kunzer A, Martineau D, McClellan WJ, Mitten M, Ng SC, Nimmer PM, Oltersdorf T, Park CM, Petros AM, Shoemaker AR, Song X, Wang X, Wendt MD, Zhang H, Fesik SW, Rosenberg SH, Elmore SW: **Studies leading to potent, dual inhibitors of Bcl-2 and Bcl-xL.** *J Med Chem* 2007, **50(4)**:641-662.
28. Oliver L, Mahe B, Gree R, Vallette FM, Juin P: **HA14-1, a small molecule inhibitor of Bcl-2, bypasses chemoresistance in leukaemia cells.** *Leuk Res* 2007.
29. Skommer J, Wlodkowic D, Matto M, Eray M, Pelkonen J: **HA14-1, a small molecule Bcl-2 antagonist, induces apoptosis and modulates action of selected anticancer drugs in follicular lymphoma B cells.** *Leuk Res* 2006, **30(3)**:322-331.
30. Tuszynski GP, Cossu G: **Differential cytotoxic effect of gossypol on human melanoma, colon carcinoma, and other tissue culture cell lines.** *Cancer Res* 1984, **44(2)**:768-771.
31. Flack MR, Pyle RG, Mullen NM, Lorenzo B, Wu YW, Knazek RA, Nisula BC, Reidenberg MM: **Oral gossypol in the treatment of metastatic adrenal cancer.** *J Clin Endocrinol Metab* 1993, **76(4)**:1019-1024.
32. Bayes M, Rabassada X, Prous JR: **Gateways to clinical trials.** *Methods Find Exp Clin Pharmacol* 2006, **28(8)**:533-591.
33. Stein RC, Joseph AE, Matlin SA, Cunningham DC, Ford HT, Coombes RC: **A preliminary clinical study of gossypol in advanced human cancer.** *Cancer Chemother Pharmacol* 1992, **30(6)**:480-482.
34. Zhang Y LY Min P, Zhang X, Ling X, Stoudemire J, Guo M, Yang D.: **A novel pan inhibitor of Bcl-2 and Mcl-1 apogossypolone (ApoG2) with superior stability and improved activity against human leukemia and lymphoma.** *Abstract 2007:98th AACR Annual Meeting, 2007 Los Angeles, CA.*
35. Del Gaizo Moore V, Brown JR, Certo M, Love TM, Novina CD, Letai A: **Chronic lymphocytic leukemia requires BCL2 to sequester prodeath BIM, explaining sensitivity to BCL2 antagonist ABT-737.** *J Clin Invest* 2007, **117(1)**:112-121.
36. Trudel S, Stewart AK, Li Z, Shu Y, Liang SB, Trieu Y, Reece D, Paterson J, Wang D, Wen XY: **The Bcl-2 family protein inhibitor, ABT-737, has substantial antimyeloma activity and shows synergistic effect with dexamethasone and melphalan.** *Clin Cancer Res* 2007, **13(2 Pt 1)**:621-629.
37. Slee EA, Harte MT, Kluck RM, Wolf BB, Casiano CA, Newmeyer DD, Wang HG, Reed JC, Nicholson DW, Alnemri ES, Green DR, Martin SJ: **Ordering the cytochrome c-initiated caspase cascade: hierarchical activation of caspases-2, -3, -6, -7, -8, and -10 in a caspase-9-dependent manner.** *J Cell Biol* 1999, **144(2)**:281-292.
38. Tang D, Lahti JM, Kidd VJ: **Caspase-8 activation and bid cleavage contribute to MCF7 cellular execution in a caspase-3-dependent manner during staurosporine-mediated apoptosis.** *J Biol Chem* 2000, **275(13)**:9303-9307.
39. Oltersdorf T, Elmore SW, Shoemaker AR, Armstrong RC, Augeri DJ, Belli BA, Bruncko M, Deckwerth TL, Dinges J, Hajduk PJ, Joseph MK, Kitada S, Korsmeyer SJ, Kunzer AR, Letai A, Li C, Mitten MJ, Nettesheim DG, Ng S, Nimmer PM, O'Connor JM, Oleksijew A, Petros AM, Reed JC, Shen W, Tahir SK, Thompson CB, Tomaselli KJ, Wang B, Wendt MD, Zhang H, Fesik SW, Rosenberg SH: **An inhibitor of Bcl-2 family proteins induces regression of solid tumours.** *Nature* 2005, **435(7042)**:677-681.

Publish with **BioMed Central** and every scientist can read your work free of charge

"BioMed Central will be the most significant development for disseminating the results of biomedical research in our lifetime."

Sir Paul Nurse, Cancer Research UK

Your research papers will be:

- available free of charge to the entire biomedical community
- peer reviewed and published immediately upon acceptance
- cited in PubMed and archived on PubMed Central
- yours — you keep the copyright

Submit your manuscript here:
http://www.biomedcentral.com/info/publishing_adv.asp

