

Review article

Prediction of electroconvulsive therapy response and remission in major depression: meta-analysis*

Linda van Diermen, Seline van den Aamele, Astrid M. Kamperman, Bernard C.G. Sabbe, Tom Vermeulen, Didier Schrijvers and Tom K. Birkenhäger

Background

Electroconvulsive therapy (ECT) is considered to be the most effective treatment in severe major depression. The identification of reliable predictors of ECT response could contribute to a more targeted patient selection and consequently increased ECT response rates.

Aims

To investigate the predictive value of age, depression severity, psychotic and melancholic features for ECT response and remission in major depression.

Method

A meta-analysis was conducted according to the PRISMA statement. A literature search identified recent studies that reported on at least one of the potential predictors.

Results

Of the 2193 articles screened, 34 have been included for meta-analysis. Presence of psychotic features is a predictor of ECT

remission (odds ratio (OR) = 1.47, $P = 0.001$) and response (OR = 1.69, $P < 0.001$), as is older age (standardised mean difference (SMD) = 0.26 for remission and 0.35 for response ($P < 0.001$)). The severity of depression predicts response (SMD = 0.19, $P = 0.001$), but not remission. Data on melancholic symptoms were inconclusive.

Conclusions

ECT is particularly effective in patients with depression with psychotic features and in elderly people with depression. More research on both biological and clinical predictors is needed to further evaluate the position of ECT in treatment protocols for major depression.

Declaration of interest

None.

Copyright and usage

© The Royal College of Psychiatrists 2018.

There is no consensus on the position of electroconvulsive therapy (ECT) in current depression treatment protocols. For depression with psychotic features, ECT is the first-line treatment according to several guidelines,^{1–3} whereas others recommend antidepressant monotherapy⁴ or in combination⁵ with antipsychotics. In clinical practice ECT is often used to treat patients with treatment-resistant depression. In a recent meta-analysis the response rate was 58% for patients with treatment-resistance depression and 70% for those without.⁶ Despite many studies on possible predictors of response to ECT, Kellner *et al*⁷ recently concluded that no useful clinical predictors have emerged. A possible explanation for this apparent lack of clinical predictors is the fact that many studies investigating predictors are underpowered to find an effect. Furthermore, heterogeneity between studies may mask the ability of a clinical variable to predict ECT response. Since many relatively small studies have been performed, meta-analysis may be useful to calculate effect sizes of possible predictors. A more accurate prediction of response and remission would be helpful to guide decision-making and preferably treat those patients likely to respond to ECT. This could substantially shorten depressive-episode duration.⁸ To our knowledge, there have been no meta-analyses that look at prediction of response and remission separately. The difference between the two is, however, clinically relevant. Remission has become the gold standard for depression treatment, because patients who do not remit have a poorer prognosis than those who do. They have a greater chance of relapse and recurrence.⁹

selected because of their possible clinical relevance and because their role in the prediction of response and remission of depression after ECT is unclear. In an earlier meta-analysis,⁶ older age and psychotic features were weakly associated with greater ECT response rates, but heterogeneity was notable. Analyses of symptom severity and melancholic features were inconclusive as a result of study heterogeneity in the same analysis.

This meta-analysis was conducted and reported according to the PRISMA-P (preferred reporting items for systematic review and meta-analysis protocols) and MOOSE guidelines^{10,11} (supplementary Table 1; available at <http://dx.doi.org/10.1192/bjp.2017.28>). Objectives and eligibility criteria were specified in advance and documented in a protocol (available from the authors on request).

Eligibility criteria

In order to obtain details of recent original studies on the predictive effect of age, severity of depression, melancholic and psychotic symptoms on the effectiveness of ECT (as it is currently practised) in patients with depression we applied the following eligibility criteria:

- studies assessing the effect of brief- or ultrabrief-pulse ECT on depression severity, published in or after 1995, articles are written in English;
- adults (>18 years of age) diagnosed with uni- or bipolar depression as confirmed by Research Diagnostic Criteria, DSM-III-R, DSM-IV, DSM-IV-TR, DSM-5 or ICD-10 criteria;
- presence of psychotic or melancholic symptoms as confirmed by a structured diagnostic or clinical interview;
- classification of patients as 'responder/non-responder' or 'remitter/non-remitter' based on scores on valid clinician-rated depression scales (Hamilton Rating Scale for Depression (HRSD) or Montgomery-Åsberg Depression Rating Scale

Method

Age, depression severity, psychotic and melancholic features were selected as potential predictors in this meta-analysis. They were

* The original version of this article was published with incorrect author affiliations. A notice detailing this has been published and the errors rectified in the online PDF and HTML version.

(MADRS)) that were administered before and soon after the end of the ECT course;

- (e) effect sizes (or raw data enabling calculation of the effect size) of single-response predictors were provided or could be obtained by contacting the authors.

Data sources and study selection

We searched Embase, Medline, Web of Science, Cochrane, PubMed publisher and Google scholar up to 17 February 2017. Articles published before 1995 were discarded. We chose to select studies from 1995 onward to get an overview of predictors of ECT as it is currently practised. The indication for, and practice of ECT has changed substantially over the years. This implies that including older studies means increased heterogeneity.

Combinations of the words depression, electroconvulsive therapy, response, remission and the four predictors (age, depression severity, psychotic and melancholic symptoms) were used. References from reviews and relevant articles were searched for additional studies. The titles and abstracts were screened for relevance. We selected articles in English. Searches were combined and duplicates removed. To maintain statistical independence of effect sizes, studies that reported on the same population were identified. When redundancy was obvious, the most comprehensive report with the largest sample size was used.

The inclusion of papers in the meta-analysis was evaluated separately by two independent researchers, the first (L.v.D.) and second author (S.v.d.A.). Disagreements were resolved via consensus. If no agreement was obtained, there was further discussion with two senior researchers (T.B. and D.S.).

Data-collection process

When reported results were insufficiently detailed but the remaining inclusion criteria were fulfilled, corresponding authors were contacted for clarification and re-contacted if necessary. Authors were contacted if an email address was available and the author had published in the past 10 years. If data on only response or remission were available, authors were contacted to ask if data on the other outcome measure could also be provided. In total, 62 authors were contacted, 21 of the responding authors provided us with the data necessary to use their study in the meta-analysis.^{12–32}

Data extraction

The information was independently extracted from each article by two investigators (L.v.D. and S.v.d.A.) using a data extraction sheet with the following data:

- (a) study characteristics: year, country and design of the study, diagnostic classification and depression severity scale used;
- (b) characteristics of the study sample: number of participants, percentage female participants, percentage of patients with psychotic symptoms, mean age of the participants, average episode duration and percentage with medication resistance;
- (c) ECT related: the average number of ECT sessions, electrode position used;
- (d) outcome measure: general response and remission rates, response and remission rates for patients with depression with and without psychotic symptoms, for patients with and without melancholic symptoms, average age (and s.d.) and depression severity score (and s.d.) for ‘responders/non-responders’ and ‘remitters/non-remitters’.

Quality assessment

There was a strict use of eligibility criteria to select studies for the meta-analysis. Diagnostic criteria had to be used and an objective

measurement of response based on one of the clinician-rated depression scales was required.

Furthermore, two of the reviewers (L.v.D. and T.B.) independently assessed several other quality aspects of the included studies based on the GRADE method³³ and the Newcastle–Ottawa Quality Assessment Scale³⁴ for cohort studies. The following three quality criteria were assessed:

- (a) design of the study (pro- or retrospective);
- (b) observational or interventional study;
- (c) completeness of outcome data (more *v.* less than 20% drop-out).

Outcome measures

The primary outcome was remission, the secondary outcome was response. The use of continuous data would be a more sensitive method to detect differences. However, we chose to use remission as primary outcome measure because it is often used as such in clinical practice. Remission is associated with a lower full symptomatic recurrence rate compared with achieving treatment response.^{9,35} In all the selected studies, response was defined as a reduction of at least 50% from the baseline HRSD or MADRS score. Remission was usually defined as a depression scale score equal to or below 7 (for HRSD-17) or 10 (for HRSD-21, HRSD-24 and MADRS).

Statistical analyses

The predictors were analysed separately with Comprehensive Meta-Analysis (CMA version 3). The effect size was analysed as an odds ratio (OR) for the dichotomous variables psychotic and melancholic symptoms. For age and severity of depression, the effect size was represented by the standardised mean difference (SMD). For each predictor, a random-effects model was computed since we expect the true effect to vary from study to study dependent on the composition of the study population.³⁶ The Stata ‘metan’ package was used for part of the analyses on publication bias.

Without consideration of the study weights in the random-effects model, we calculated the average age of all ‘responders/non-responders’ and ‘remitters/non-remitters’. In the same way, response and remission percentages were calculated for those with and without psychotic and melancholic symptoms.

Publication bias

When there were ten or more studies in an analysis,³⁷ funnel plots were used to visualise whether or not the effects found were dependent on the sample size.³⁶ Publication bias was formally assessed with the Egger’s test in CMA for age and depression severity given their continuous outcome³⁸ and with the Harbord’s test in Stata for the dichotomous predictors.³⁹

Heterogeneity and sensitivity analysis

Heterogeneity was assessed using Cochran’s *Q*-test and *I*² statistics. An *I*² statistic of 0–40% was interpreted as heterogeneity that might not be important, 30–60% may represent moderate heterogeneity, 50–90% may represent substantial heterogeneity and 75–100% is considerable heterogeneity.³⁷

Heterogeneity was further explored conducting sensitivity analyses. Therefore, we calculated the effect using fixed-effect and random-effects modelling and evaluated the effect of the modelling procedure on the overall effect per predictor. A substantial difference in the effect calculated by the fixed- and random-effects model will be seen only if studies are markedly heterogeneous.⁴⁰

Furthermore, we compared the overall effects based on potential clinical sources of heterogeneity such as the continent of origin

(according to World Health Organization classification), the study population (average age and episode duration of the sample, the percentage of patients with psychotic features, percentage with medication resistance) and treatment parameters (length of ECT course and electrode position used). The effects were also compared based on the before mentioned study quality criteria.

Results

Selection of studies

After removal of duplicates and studies published before 1995 (Fig. 1), the literature search yielded 2193 potentially relevant articles. We excluded 1991 articles after review of titles and abstracts. The full texts of the 202 remaining studies were analysed; 171 of them did not meet eligibility criteria and were excluded, 2 articles were added through reference lists and 1 through cross-reference. In total, 34 articles were selected and used in this meta-analysis.^{12–32,41–53} The interrater reliability was good, with an interrater agreement of 96.1% (kappa (κ) = 0.87, 95% CI 0.78–0.96).

Study characteristics

Overall, the selected studies reported on 3276 participants that received an ECT course (supplementary Table 2). More than half of the studies (52.9%) were carried out in Europe. A total of 25 studies included psychotic symptoms, 28 had data on age, 28 on depression severity and 7 on melancholic symptoms.

Studies had between 15 and 414 participants (on average 99 per study). The majority of the participants (64.3%) were women (range 27.0–77.8%) and 32.6% had psychotic symptoms (range 6.7–70.6%). Patients were on average 57.1 years of age (range of mean

age was 33.1–74.8). Three studies reported on the same large sample, but on a different predictor.^{19,31,54} The data of the largest sample were used for the above calculations of study characteristics. One of the three was eventually excluded⁵⁴ because data on psychotic symptoms were provided by the authors of the largest sample.¹⁹

Results of the quality assessment can be found in the supplementary material (supplementary Table 3). There were 7 retrospective studies and 27 had a prospective design. In total, 26 studies were observational, 8 of them were interventional. Eight studies had a drop-out rate of more than 20%.

Psychotic symptoms

Remission

Data on the presence of psychotic symptoms and remission following ECT were provided in 21 studies. For remission, the OR under the random-effects model was 1.47 (95% CI 1.16–1.85, $P = 0.001$, $I^2 = 36.6$) (Fig. 2(a)). The remission rate for patients with depression and psychotic symptoms was 57.8%; for those without psychotic symptoms it was 50.9%.

Response

Data on the presence of psychotic symptoms and response to ECT were provided in 21 studies. Psychotic features were positively associated with a higher ECT response rate under the random-effects model (Fig. 2(b)). The OR was 1.69 (95% CI 1.27–2.24, $P < 0.001$, $I^2 = 25.8$). The response rate for patients with depression and psychotic symptoms was 78.9% and for those without psychotic symptoms it was 70.6%.

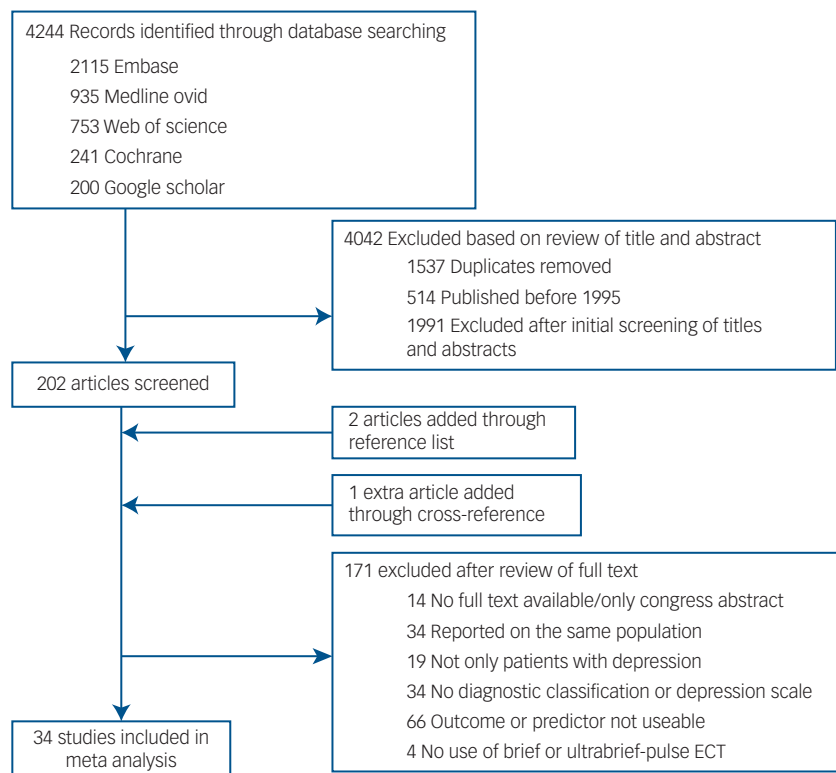


Fig. 1 Study selection.

ECT, electroconvulsive therapy.

Age

Remission

In total, 24 papers provided data on age and remission. Age was positively associated with higher ECT remission rates under the random-effects model (Fig. 2(c)). The SMD was 0.26 (95% CI 0.13–0.38, $P < 0.001$, $I^2 = 53.4$). The average age of those whose condition remitted was 59.7 years, compared with 55.4 years for those whose condition did not.

Response

Data on age and response to ECT could be extracted from 25 papers. Age was positively associated with a higher ECT response under the random-effects model (Fig. 2(d)). The SMD was 0.35 (95% CI 0.23–0.47, $P < 0.001$, $I^2 = 29.7$). The average age of those who responded was 58.2 years, compared with 54.9 years for those who did not respond.

Melancholic symptoms

Remission

There were seven studies that provided data on presence of melancholic symptoms and remission after ECT. The OR under the random-effects model was 1.24 (95% CI 0.69–2.22, $I^2 = 63.9$, Fig. 2(e)). The difference was, however, not significant ($P = 0.467$). The remission rate for patients with depression and melancholic symptoms was 62.9%, for those without melancholic symptoms it was 65.5%.

Response

Data on melancholic symptoms and response could be obtained from five studies. The OR under the random-effects model was 1.71 (95% CI 0.43–6.84, $I^2 = 85.9$, Fig. 2(f)). The difference was, however, not significant ($P = 0.452$) and there was considerable heterogeneity. The response rate for patients with depression and

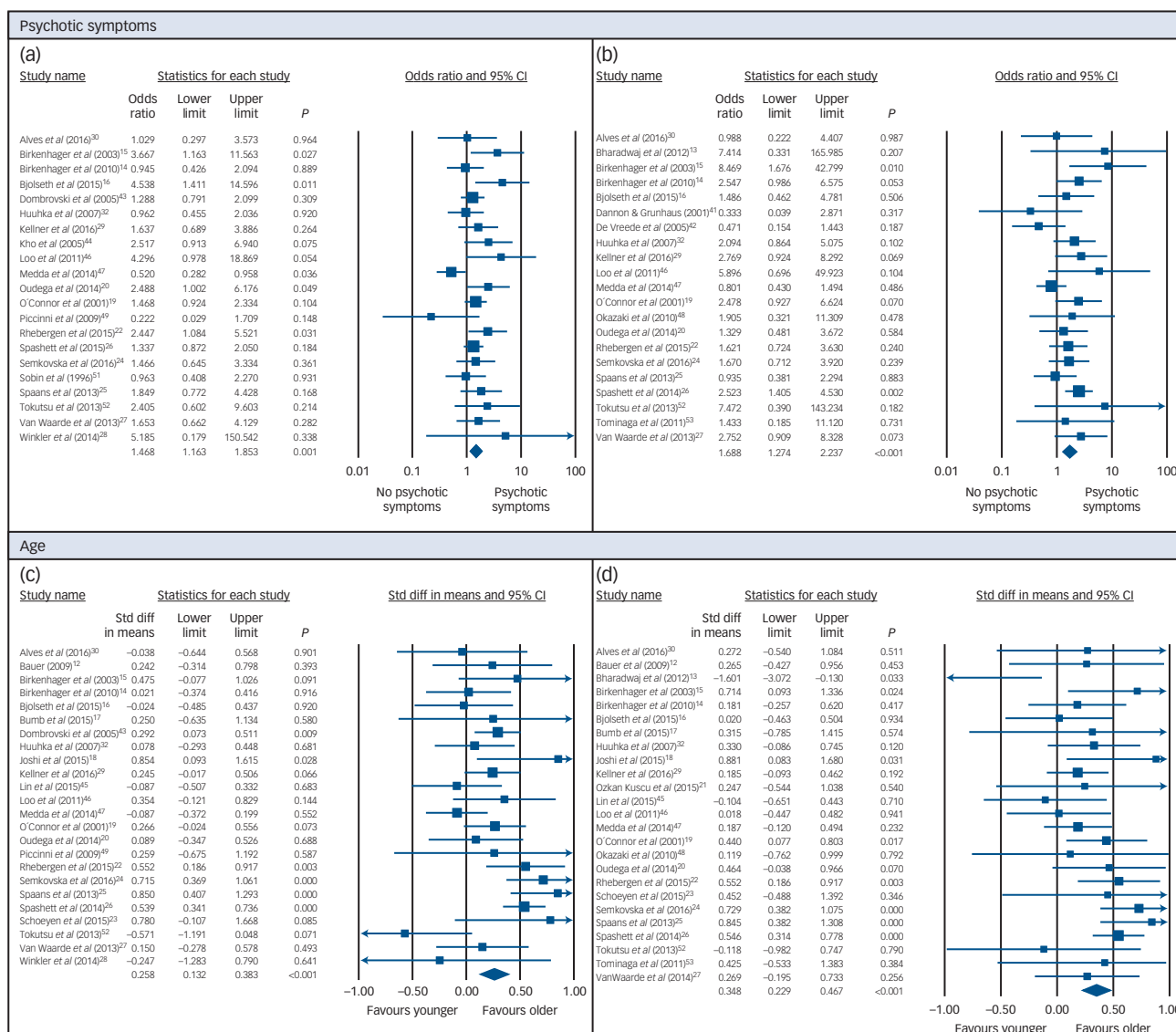


Fig. 2 Random-effects meta-analyses.

Effect of psychotic symptoms on remission (a) and response (b) and age on remission (c) and response (d) of depression after electroconvulsive therapy (ECT). Random-effects meta-analyses of the effect of melancholic symptoms on remission (e) and response (f) and depression severity on remission (g) and response (h) of depression after ECT. Std diff, standardised difference.

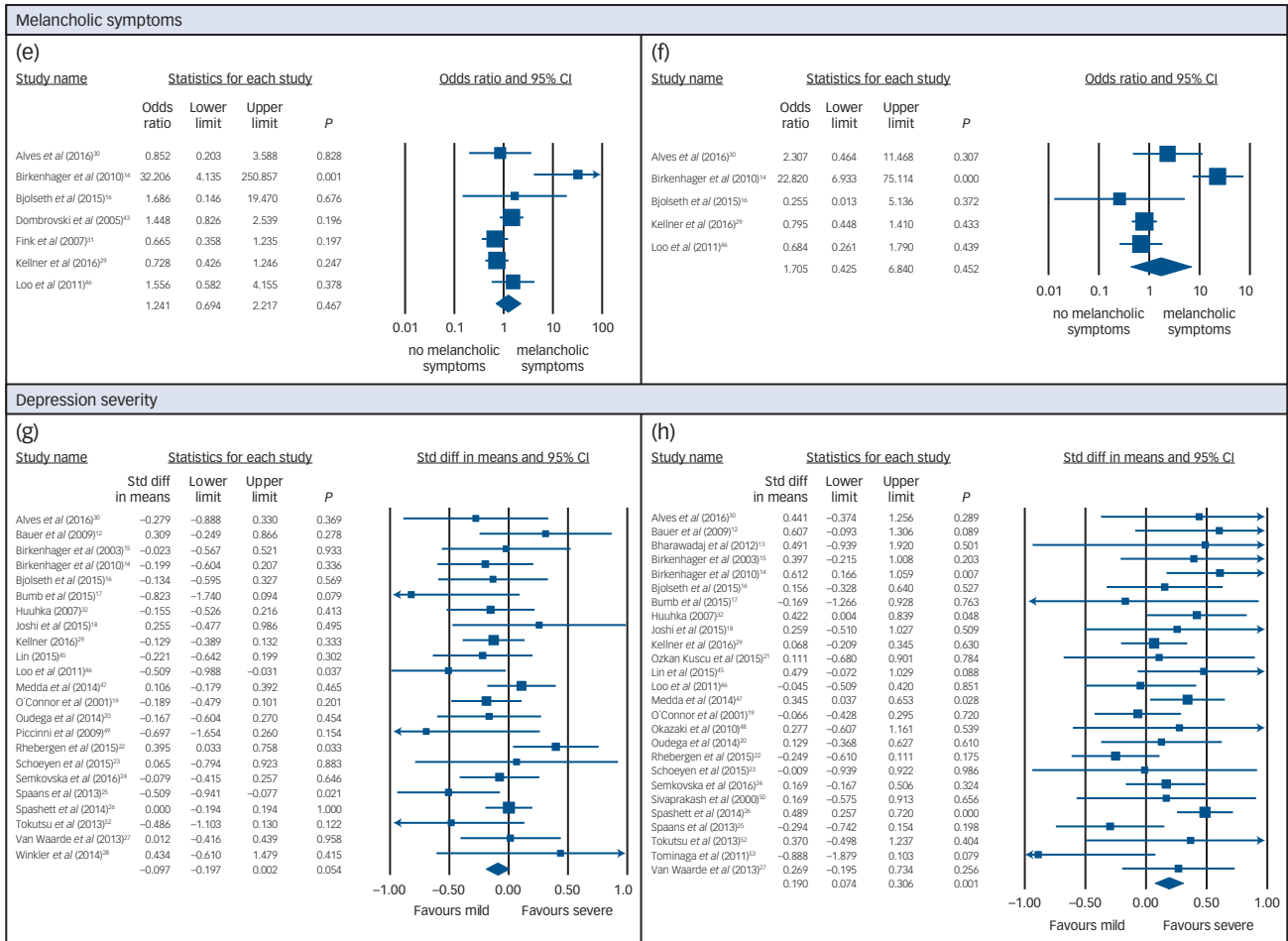


Fig. 2 Continued.

melancholic symptoms was 71.1% and for those without melancholic symptoms it was 64.7%.

Depression severity

Remission

Data on depression severity and remission could be extracted from 23 studies. Remission following ECT was less likely in patients with higher depression severity scores, although the effect was not significant under the random-effects model (SMD = -0.10, 95% CI -0.20-0.002, P = 0.054, I² = 29.7, Fig. 2(g)).

Response

In total, 26 studies reported on depression severity and response to ECT. A small but significant association was found between response and baseline symptom severity scores on the HRSD or MADRS, under the random-effects model (SMD 0.19, 95% CI 0.07-0.31, P = 0.001, I² = 28.1, Fig. 2(h)). Patients with higher scores were more likely to respond to ECT.

Publication bias

The funnel plots that could be generated revealed no obvious asymmetry (see supplementary Fig 1). Given the limited number of studies in the melancholia analyses, no funnel plots were generated for this predictor. According to Egger's and Harbord's test there was also no significant publication bias in all of these analyses (Table 1).

Heterogeneity and sensitivity analysis

A group of observational studies often shows considerable heterogeneity, regardless of the number of included studies. The Cochran's Q-test and I² statistics were used to quantify heterogeneity. There was evidence of moderate heterogeneity in all of the analyses that were done (Table 2), and substantial heterogeneity in the analyses on melancholic symptoms.

Heterogeneity was further explored conducting sensitivity analysis. Therefore, we calculated the effect using both fixed-effect and random-effects modelling and evaluated the effect of the modelling procedure on the overall effect per predictor. The difference

	Intercept	95% CI	P
Harbord's test			
Psychosis – remission	0.563	-0.289 to 1.415	0.182
Psychosis – response	0.011	-0.529 to 0.550	0.968
Melancholia – remission	1.739	-1.112 to 4.590	0.178
Melancholia – response	0.630	-4.641 to 5.900	0.729
Egger's test			
Age – remission	-0.626	-2.164 to 0.912	0.408
Age – response	-0.787	-1.960 to 0.386	0.178
Severity – remission	-0.546	-2.014 to 0.922	0.447
Severity – response	-0.350	-1.517 to 0.817	0.542

Table 2 Sensitivity analyses – results of random- and fixed-effect models and heterogeneity tests

Predictor	Studies, n	n	Random effects			Fixed effect			Heterogeneity test			
			OR (95% CI)	SMD (95% CI)	P	OR (95% CI)	SMD (95% CI)	P	Q	d.f.	I ²	P
<i>Dichotomous</i>												
Psychosis												
Remission	21	2787	1.468 (1.163 to 1.853)		0.001**	1.399 (1.179 to 1.660)		<0.001***	31.54	20	36.59	0.048*
Response	21	2396	1.688 (1.274 to 2.237)		<0.001**	1.659 (1.321 to 2.083)		<0.001***	26.96	20	25.82	0.136
Melancholia												
Remission	7	1242	1.241 (0.694 to 2.217)		0.467	1.027 (0.762 to 1.386)		0.859	16.64	6	63.93	0.011*
Response	5	524	1.705 (0.425 to 6.840)		0.452	1.269 (0.823 to 1.956)		0.282	28.37	4	85.90	<0.001***
<i>Continuous</i>												
Age												
Remission	24	2863		0.258 (0.132 to 0.383)	<0.001***		0.285 (0.206 to 0.363)	<0.001***	49.32	23	53.36	0.001**
Response	25	2633		0.348 (0.229 to 0.467)	<0.001***		0.364 (0.272 to 0.457)	<0.001***	34.15	24	29.73	0.082
Severity												
Remission	23	2531		-0.097 (-0.197 to 0.002)	0.054		-0.086 (-0.169 to -0.003)	0.043*	27.69	22	20.54	0.186
Response	26	2663		0.190 (0.074 to 0.306)	0.001**		0.203 (0.112 to 0.294)	<0.001***	34.75	25	28.06	0.093

n, total number of participants; OR, odds ratio (predictor: present/predictor: absent); SMD, standardised mean difference ('responders' – 'non-responders' or 'remitters' – 'non-remitters').

* P<0.05, **P<0.01, ***P<0.001.

between results of fixed- and random-effects analyses were small (Table 2), confirming that heterogeneity in our analyses was limited.

Besides that, we compared the overall effects based on the potential clinical sources of heterogeneity and study quality criteria (as discussed). Continuous variables were analysed with meta-regression, categorical variables were subjected to mixed-effects subgroup analysis. Studies were excluded from the analyses if data on the variable was not available. This can explain differences found in overall effects.

Psychotic symptoms

Age and medication resistance were clinical sources of heterogeneity in the remission analysis (Table 3). The predictive effect of psychotic symptoms was stronger in samples with older patients and those with lower levels of medication resistance. The results were not significantly influenced by the other potential clinical sources of heterogeneity (length of the ECT course, episode duration, electrode position and location of the study, supplementary Table 4).

The study quality criteria had no significant influence on the results of the remission analysis (design of the study, drop-out and whether or not it was an observational study, supplementary Table 4). The length of the ECT course was a clinical source of heterogeneity in the response analysis. It was significantly related to the effect size, with longer courses corresponding to a greater predictive effect of psychotic symptoms on ECT response (Table 3). The results were not significantly influenced by the other potential clinical sources of heterogeneity (age, episode duration, therapy resistance, electrode position, location of the study) or the study quality criteria (design of the study, drop-out and whether or not it was an observational study, supplementary Table 4).

Age

The most important clinical source of heterogeneity in the analyses on the effect of age on response and remission after ECT, was the average episode duration (Table 3). SMDs were greater in studies with longer episode duration. Moreover, the predictive effect of age was significantly higher in studies that used right unilateral or variable electrode positions, compared with those only using bilateral ECT in the remission analysis (Fig. 3a).

In the remission analysis, the SMD was also influenced by whether it was an observational study, or an interventional study. Interventional studies found on average higher SMDs than observational studies (Fig. 3b). The results were not influenced by the other potential clinical sources of heterogeneity (psychotic symptoms, medication resistance, length of the ECT course, location of the study), or the other study quality criteria (design of the study and drop-out, supplementary Table 4).

In the response analysis, the results were not significantly influenced by the other potential clinical sources of heterogeneity (psychotic symptoms, electrode position, location of the study, medication resistance, length of the ECT course), or the study quality criteria (design of the study, drop-out and whether or not it was an observational study, supplementary Table 4).

Melancholic symptoms

Because of low patient numbers in part of the analyses and different definitions of the concept of melancholia, results of the response and remission analyses were considered to be inconclusive. Therefore, sensitivity analyses were not performed.

Depression severity

In the remission analysis, there was no significant influence of the potential clinical sources of heterogeneity (age, psychotic

Table 3 Tests of heterogeneity – results of meta- regression

	Beta	95% CI	Q	P
Psychosis				
Response, length course	0.089	0.001 to 0.176	3.89	0.05*
Remission, age	0.040	0.006 to 0.073	5.32	0.02*
Remission, medication resistance	-0.019	-0.036 to -0.003	5.20	0.02*
Age				
Response, episode duration	0.037	0.005 to 0.068	5.30	0.02*
Remission, episode duration	0.044	0.016 to 0.073	9.15	<0.01**

* $P < 0.05$, ** $P < 0.01$.

symptoms, episode duration, medication resistance, length of the ECT course, location of the study). Drop-out was a source of heterogeneity in the remission analysis (Fig. 3c). Studies with drop-out rates above 20% found that lower depression scale scores favoured remission after ECT. Those with limited drop-out found no effect at all of depression severity. There was no significant effect of the other study quality criteria (design of the study and whether or not it was an observational study, supplementary Table 4).

The results of the response analysis were not significantly influenced by any of the potential clinical sources of heterogeneity (age, electrode position, length of ECT course, episode duration, therapy resistance, location of the study). The SMD in the response analysis was influenced by the design of the study. Retrospective studies found remarkably higher SMDs than prospective studies (Fig. 3d). The results were not influenced by the other study quality criteria (drop-out and whether or not it was an observational study, supplementary Table 4).

Discussion

Main findings

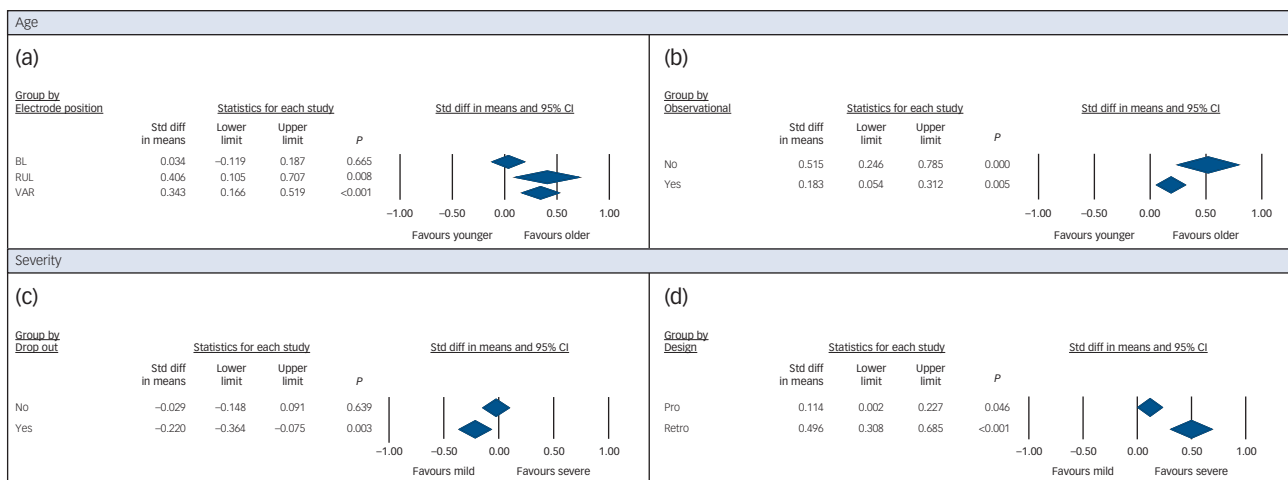
This meta-analysis provides evidence for the superior efficacy of ECT in patients with depression with psychotic features, in older patients and in those with a more severe depression, whereas data on melancholic symptoms were inconclusive. This is an important finding, because identification of reliable predictors could contribute to more targeted patient selection, consequently increased ECT response and remission rates and limited episode duration.

We included 34 studies reporting on 3276 patients with a depressive disorder treated with ECT. There were relatively strict inclusion criteria to select only high-quality studies and, in contrast to previous meta-analyses on prediction of ECT efficacy, we made a distinction between data on response *v.* remission.

Presence of psychotic symptoms had an OR of 1.69 ($P < 0.001$) for response and 1.47 ($P = 0.001$) for remission. The SMD for older age was 0.35 ($P < 0.001$) in the response analysis, for remission it was 0.26 ($P < 0.001$). These are all rather small effect sizes.⁵⁵ When we look at the average age of patients whose condition remitted (59.7) and compare this with the age of those who did not remit (55.4), the difference is only 4.3 years. One could hypothesise that the age of 57 somehow resembles a turning point in remission following ECT. However, it is clear that not every person older than 57 will experience remission after treatment with ECT, just as remission will not occur in every patient with depression with psychotic symptoms. Therefore, age and psychotic symptoms are no water-proof predictors of ECT efficacy. They can, however, serve as one of several factors that can guide treatment decision-making.

A weaker association was detected between the severity of depression and response to treatment (SMD 0.19, $P = 0.001$). Depression severity was not associated with remission. This appears logical, since higher scores pre-ECT need a larger decrease than lower scores to attain remission.

Psychomotor disturbance is a key marker not only of melancholia but also of psychotic depression.⁵⁶ Thus, those with depression with psychotic features often have melancholic symptoms. Consequently, the finding that depression with psychotic features is a predictor of ECT response and remission indirectly points to

**Fig. 3** Significant results of subgroup analyses.

Mixed-effects analysis of electrode position in the remission analysis of the predictor age (a), of the study quality criterion observational/interventional in the remission analysis of the predictor age (b), of dropout in the remission analysis of the predictor severity (c) and of study design in the response analysis of the predictor severity (d). BL, bilateral; RUL, right unilateral; VAR, variable; Pro, Prospective; Retro, Retrospective; Std diff, standardised difference.

melancholic symptoms also having predictive potential. However, this does not result from our analysis. The few studies that reported on melancholic symptoms did not use the same definition of melancholia. Furthermore, one of the studies had a very low number of patients without melancholic features,¹⁶ and another one had very low numbers of individuals who responded/remitted in patients without melancholic symptoms.¹⁴ This resulted in very large confidence intervals and considerable heterogeneity. We conclude that this predictor is insufficiently investigated to draw solid conclusions on its predictive effect.

Several relevant factors have emerged from the heterogeneity analysis. Presence of psychotic symptoms was a stronger predictor of remission in older patients and in patients with limited medication resistance. Psychotic symptoms were a stronger predictor of response for those with a longer ECT course. A stronger predictive effect of psychotic symptoms in patients receiving a longer ECT course could mean that patients with depression with psychotic symptoms might benefit from longer ECT courses.

A limited episode duration is known to predict a good response to ECT.⁶ However, in studies with longer episode duration, the predictive effect of age on response and remission was stronger. This is remarkable, since we have no reason to expect that episode duration *per se* has an influence on the strength of the predictive effect of age. The value of the predictor age was also considerably higher in studies that used right unilateral or variable electrode positions in the remission analysis. As we look further, this result might be mediated by the location at which the study was performed. Age was a strong predictor of response and remission in studies carried out in the USA and Europe, and although the difference was not significant, the predictive effect was not that clear in studies carried out in Asia. An explanation could be that studies from Asia all use the standard bilateral electrode position, administer relatively short ECT courses and participants had a lower average age. The question therefore remains if the predictors that show a significant effect are relevant independent of the already known predictors and other confounders.

Besides the four predictors we investigated, there are several other potential clinical predictors that have been subject to previous meta-analyses. The predictive effect of the number of episodes, the age of onset, gender and a bipolar diagnosis on the efficacy of ECT appears to be non-existent.⁶ The lack of predictive value of a bipolar diagnosis was confirmed by a second meta-analysis.⁵⁷ There was a significant influence of episode duration (SMD -0.43 , $P < 0.001$; $I^2 = 35\%$) on ECT response. The weighted mean episode duration for those who responded was 6.6 months and 14 months for those who did not respond. Medication failure was the second significant predictor (OR 0.57, $P = 0.002$; $I^2 = 35\%$) for poorer ECT response, as mentioned in the introduction. This result was also confirmed by a second meta-analysis.⁵⁸

Data on known response predictors (episode duration and medication failure) and the percentage of patients with psychotic symptoms were not always provided and could therefore not always be accounted for in the current analyses. The results of the heterogeneity analyses therefore have to be interpreted with care.

The effect size of psychotic symptoms as predictor of response and remission was considerably higher than the effect found in a recent meta-analysis on ECT response prediction by Haq *et al* (OR = 1.34, $P = 0.12$).⁶ The same holds true for age (SMD 0.112, $P = 0.25$) and depression severity (SMD -0.022 , $P = 0.90$). Differences between the meta-analyses were that, in our study response and remission rates were separated and strictly defined by HRSD or MADRS score. In addition, we retrieved unpublished data from 21 authors, contributing to a more complete analysis of those studies. To recapitulate, our study probably analysed a more homogeneous sample that facilitated detection of significant differences.

Strengths

There are several strengths to this comprehensive meta-analysis. To make sure we based our analysis on reliable data, we used relatively strict criteria for selection of studies (use of a diagnostic instrument and a validated clinician-rated depression scale). The second strength is the separate analysis for response and remission. This distinction enabled us to confirm the findings of one outcome criterion by a second one. Our findings lead to the conclusion that age and psychotic symptoms are stronger predictors of response than of remission. The fact that we contacted a number of authors for extra data contributed to a large sample to study and a more complete data analysis of studies concerned, limiting publication bias. Furthermore, it enabled us to find sources of heterogeneity.

Limitations

There are several limitations to our meta-analysis. Where strict selection criteria can be considered a strength, they can also be considered a limitation. As a consequence, a number of (often large) studies have been excluded. An example is a large Swedish study ($n = 990$)⁵⁹ that has only used Clinical Global Impression – Improvement scores and not a clinician-rated depression scale (HRSD or MADRS) to distinguish between individuals who responded and those that did not. The results of this study are, however, in line with our findings – a higher proportion of older patients responded (84.3%) as compared with younger ones (74.2%, $P < 0.001$) and patients with severe, depression with psychotic features had the highest response rate (88.9%) compared with patients with severe, non-psychotic depression (81.5%) and patients with mild/moderate depression (72.8%, $P < 0.001$). Furthermore, several seemingly suitable studies^{60,61} could not be used because they have not reported on the value of predictors for responders *v.* non-responders and could not provide us with these data.

As mentioned before, we did not only use data from studies that were designed specifically to look at the predictive effect of psychotic symptoms or one of the other predictors. Part of the data could be abstracted from studies with a different objective. Considering publication bias, this is an advantage. On the other hand, this is an extra source of heterogeneity between the studies. Different populations were studied, the studies had divergent designs, several depression scales and versions of these scales were used and the definition of remission can therefore not be exactly the same in every study. Moreover, ECT practice and patient selection for ECT differs all around the world.⁶² We tried to minimise the impact of this heterogeneity by including some of these parameters in heterogeneity analysis to determine their effect on outcome.

Despite the fact that more effective forms of ECT exist,⁶³ we have chosen not to exclude studies that use ultrabrief-pulse ECT. Given its cognitive advantages it can be the preferred treatment for a subgroup of patients with depression. The predictor results of the studies that use only ultrabrief-pulse ECT^{29,46} are in line with the overall results of our meta-analysis.

Clinical implications

Besides episode duration and treatment resistance, which are established predictors for the efficacy of ECT, age, depression severity and the presence of psychotic symptoms can also be of value in the ECT treatment decision-making process. Previous studies found a favourable response to ECT in patients with a short episode duration and limited treatment resistance. When episode duration is longer, age might be able to guide decision-making.

ECT could be suggested relatively early to those prone to respond or remit, thereby limiting depression duration and preventing a chronic trajectory of depressive symptoms. Other treatment options can first be considered for those with lower response and remission chances.

Research implications

We have used the general definition of melancholia in our meta-analysis. Another strategy could be to investigate psychomotor disturbance as measured by the CORE Assessment of Psychomotor Functioning or the score on HRSD retardation and agitation item scores as a more specific marker.⁶⁴ Observable psychomotor disturbance has been suggested as an essential criterion in making a diagnosis of melancholia⁶⁵ and proved to be a predictor of ECT response in previous studies.^{66,67} For future projects, it could be valuable to incorporate measurement of the severity of psychomotor disturbance next to the general definition of melancholia so that the predictive effect of the presence of melancholia and more specific psychomotor disturbance can be evaluated.

Our analysis examined a lot of (often) small studies that report on two or three of the factors that are known to be relevant. Larger studies that report on all of the identified predictors (and the presence of personality disorder⁶⁸) could be valuable to get a clearer view on the combined effect of several predictors.

A combination of these clinical variables with their biological underpinnings could further improve response and remission prediction and could serve as more objective tools to guide patient treatment matching.

Linda van Diermen, Seline van den Aemele, MD, Collaborative Antwerp Psychiatric Research Institute (CAPRI), Department of Biomedical Sciences, University of Antwerp, Belgium and University Department, Psychiatric Hospital Duffel, VZW Emmaüs, Duffel, Belgium; **Astrid M. Kamperman**, PhD, Epidemiological and Social Psychiatric Research Institute (ESPRI), Department of Psychiatry, Erasmus University Medical Centre, Rotterdam, the Netherlands; **Bernard C.G. Sabbe, Tom Vermeulen, Didier Schrijvers**, MD, PhD, CAPRI, Department of Biomedical Sciences, University of Antwerp, Belgium and University Department, Psychiatric Hospital Duffel, VZW Emmaüs, Duffel, Belgium; **Tom K. Birkenhäger**, MD, PhD, Department of Psychiatry, Erasmus University Medical Center, Rotterdam, the Netherlands and CAPRI, Department of Biomedical Sciences, University of Antwerp, Belgium

Correspondence: Linda van Diermen, University Department, Psychiatric Hospital Duffel, Stationsstraat 22c, 2570 Duffel, Belgium. Email: linda.vandiermen@uantwerpen.be

First received 30 Nov 2016, final revision 19 Sep 2017, accepted 27 Oct 2017

Acknowledgements

We thank the authors mentioned in the Method section for sharing unpublished data. Besides that, we thank data specialist Wichor Bramer for the literature search.

Supplementary material

Supplementary material is available online at <https://doi.org/10.1192/bjp.2017.28>.

References

- Milev RV, Giacobbe P, Kennedy SH, Blumberger DM, Daskalakis ZJ, Downar J, et al. Canadian network for mood and anxiety treatments (CANMAT) 2016 clinical guidelines for the management of adults with major depressive disorder: section 4. Neurostimulation treatments. *Can J Psychiatry* 2016; **6**: 561–75.
- Bauer M, Pfennig A, Severus E, Whybrow PC, Angst J, Möller H-J, et al. World federation of societies of biological psychiatry (WFSBP) guidelines for biological treatment of unipolar depressive disorders, part 1: update 2013 on the acute and continuation treatment of unipolar depressive disorders. *World J Biol Psychiatry* 2013; **14**: 334–85.
- American Psychiatric Association. *Practice Guideline for the Treatment of Patients with Major Depressive Disorder*. American Psychiatric Association, 2010. (https://psychiatryonline.org/pb/assets/raw/sitewide/practice_guidelines/guidelines/mdd.pdf)
- The National Institute for Health and Care Excellence. *Depression: The Treatment and Management of Depression in Adults (Updated Edition)*. NICE, 2010.
- Ellis P, Royal Australian and New Zealand College of Psychiatrists Clinical Practice Guidelines Team for Depression. Australian and New Zealand clinical practice guidelines for the treatment of depression. *Aust N Z J Psychiatry* 2004; **38**: 389–407.
- Haq AU, Sitzmann AF, Goldman ML, Maixner DF, Mickey BJ. Response of depression to electroconvulsive therapy: a meta-analysis of clinical predictors. *J Clin Psychiatry* 2015; **76**: 1374–84.
- Kellner CH, Greenberg RM, Murrrough JW, Bryson EO, Briggs MC, Pasculli RM. ECT in treatment-resistant depression. *Am J Psychiatry* 2012; **169**: 1238–44.
- Husain MM, Rush AJ, Fink M, Knapp R, Petrides G, Rummans T, et al. Speed of response and remission in major depressive disorder with acute electroconvulsive therapy (ECT): a Consortium for Research in ECT (CORE) report. *J Clin Psychiatry* 2004; **65**: 485–91.
- McIntyre RS, O'Donovan C. The human cost of not achieving full remission in depression. *Can J Psychiatry* 2004; **49** (3 suppl 1): 10S–16S.
- Moher D, Shamseer L, Clarke M, Ghersi D, Liberati A, Petticrew M, et al. Preferred reporting items for systematic review and meta-analysis protocols (PRISMA-P) 2015 statement. *Syst Rev* 2015; **4**: 1.
- Stroup DF, Berlin JA, Morton SC, Olkin I, Williamson GD, Rennie D, et al. Meta-analysis of observational studies in epidemiology: a proposal for reporting. Meta-analysis of observational studies in epidemiology (MOOSE) group. *JAMA* 2000; **283**: 2008–12.
- Bauer M, Pfennig A, Linden M, Smolka MN, Neu P, Adli M. Efficacy of an algorithm-guided treatment compared with treatment as usual: a randomized, controlled study of inpatients with depression. *J Clin Psychopharmacol* 2009; **29**: 327–33.
- Bharadwaj V, Grover S, Chakrabarti S, Avasthi A, Kate N. Clinical profile and outcome of bipolar disorder patients receiving electroconvulsive therapy: a study from north India. *Indian J Psychiatry* 2012; **54**: 41–7.
- Birkenhäger TK, Pluijms EM, Ju MR, Mulder PG, van den Broek WW. Influence of age on the efficacy of electroconvulsive therapy in major depression: a retrospective study. *J Affect Disord* 2010; **126**: 257–61.
- Birkenhäger TK, Pluijms EM, Lucius SAP. ECT response in delusional versus non-delusional depressed inpatients. *J Affect Disord* 2003; **74**: 191–5.
- Bjølseth TM, Engedal K, Benth JS, Dybedal GS, Gaarden TL, Tanum L. Clinical efficacy of formula-based bifrontal versus right unilateral electroconvulsive therapy (ECT) in the treatment of major depression among elderly patients: a pragmatic, randomized, assessor-blinded, controlled trial. *J Affect Disord* 2015; **175**: 8–17.
- Bumb JM, Aksay SS, Janke C, Kranaster L, Geisel O, Gass P, et al. Focus on ECT seizure quality: serum BDNF as a peripheral biomarker in depressed patients. *Eur Arch Psychiatry Clin Neurosci* 2015; **265**: 227–32.
- Joshi SH, Espinoza RT, Pirnia T, Shi J, Wang Y, Ayers B, et al. Structural plasticity of the hippocampus and amygdala induced by electroconvulsive therapy in major depression. *Biol Psychiatry* 2015; **17**: 1–11.
- O'Connor MK, Knapp R, Husain M, Rummans Ta, Petrides G, Smith G, et al. The influence of age on the response of major depression to electroconvulsive therapy: a C.O.R.E. Report. *Am J Geriatr Psychiatry* 2001; **9**: 382–90.
- Oudega ML, van Exel E, Stek ML, Wattjes MP, van der Flier WM, Comijs HC, et al. The structure of the geriatric depressed brain and response to electroconvulsive therapy. *Psychiatry Res* 2014; **222**: 1–9.
- Ozkan Kusu O, Karacaer F, Biricik E, Gulec E, Tamam L, Gunes Y. Effect of ketamine, thiopental and ketamine-thiopental combination during electroconvulsive therapy for depression. *Turkish J Anesth Reanim* 2015; **43**: 313–7.
- Rhebergen D, Huisman A, Bouckaert F, Kho K, Kok R, Sienaert P, et al. Older age is associated with rapid remission of depression after electroconvulsive therapy: a latent class growth analysis. *Am J Geriatr Psychiatry* 2015; **23**: 274–82.
- Schoeyen HK, Kessler U, Andreassen OA, Auestad BH, Bergsholm P, Malt UF, et al. Treatment-resistant bipolar depression: a randomized controlled trial of electroconvulsive therapy versus algorithm-based pharmacological treatment. *Am J Psychiatry* 2015; **172**: 41–51.
- Semkovska M, Landau S, Dunne R, Kolshus E, Kavanagh A, Jelovac A, et al. Bitemporal versus high-dose unilateral twice-weekly electroconvulsive therapy for depression (EFFECT-Dep): a pragmatic, randomized, non-inferiority trial. *Am J Psychiatry* 2016; **173**: 408–17.
- Spaans H-P, Verwijk E, Comijs HC, Kok RM, Sienaert P, Bouckaert F, et al. Efficacy and cognitive side effects after brief pulse and ultrabrief pulse right

- unilateral electroconvulsive therapy for major depression: a randomized, double-blind, controlled study. *J Clin Psychiatry* 2013; **74**: e1029–36.
- 26 Spashett R, Fernie G, Reid IC, Cameron IM. MADRS symptom subtypes in ECT-treated depressed patients: relationship to response and subsequent ECT. *J ECT* 2014; **30**: 227–31.
 - 27 van Waarde Ja, van Oudheusden LJB, Heslinga OB, Verwey B, van der Mast RC, Giltay E. Patient, treatment, and anatomical predictors of outcome in electroconvulsive therapy: a prospective study. *J ECT* 2013; **29**: 113–21.
 - 28 Winkler D, Pjrek E, Lanzenberger R, Baldinger P, Eitel D, Kasper S, et al. Actigraphy in patients with treatment-resistant depression undergoing electroconvulsive therapy. *J Psychiatr Res* 2014; **57**: 96–100.
 - 29 Kellner CH, Husain MM, Knapp RG, McCall WV, Petrides G, Rudorfer MV, et al. Right unilateral ultrabrief pulse ECT in geriatric depression: phase 1 of the PRIDE study. *Am J Psychiatry* 2016; **173**: 1101–9.
 - 30 Alves LPC, Freire TFV, Fleck MPA, Rocha NS. A naturalistic study of high-dose unilateral ECT among severely depressed inpatients: how does it work in the clinical practice? *BMC Psychiatry* 2016; **16**: 396.
 - 31 Fink M, Rush AJ, Knapp R, Rasmussen K, Mueller M, Rummans Ta, et al. DSM melancholic features are unreliable predictors of ECT response: a CORE publication. *J ECT* 2007; **23**: 139–46.
 - 32 Huuhka K, Anttila S, Huuhka M, Leinonen E, Rontu R, Mattila K, et al. Brain-derived neurotrophic factor (BDNF) polymorphisms G196A and C270T are not associated with response to electroconvulsive therapy in major depressive disorder. *Eur Arch Psychiatry Clin Neurosci* 2007; **257**: 31–5.
 - 33 Goldet G, Howick J. Understanding GRADE: an introduction. *J Evid Based Med* 2013; **6**: 50–4.
 - 34 Stang A. Critical evaluation of the Newcastle-Ottawa scale for the assessment of the quality of nonrandomized studies in meta-analyses. *Eur J Epidemiol* 2010; **25**: 603–5.
 - 35 Trivedi MH, Daly EJ. Treatment strategies to improve and sustain remission in major depressive disorder. *Dialogues Clin Neurosci* 2008; **10**: 377–84.
 - 36 Borenstein M, Hedges LV, Higgins JPT, Rothstein HR. *Introduction to Meta-Analysis*. John Wiley & Sons, Ltd, 2009.
 - 37 Higgins J, Green S. *Cochrane Handbook for Systematic Reviews of Interventions*. 5.1.0. Cochrane Collaboration, 2011.
 - 38 Egger M, Davey Smith G, Schneider M, Minder C. Bias in meta-analysis detected by a simple, graphical test. *BMJ* 1997; **315**: 629–34.
 - 39 Harbord RM, Egger M, Sterne JAC. A modified test for small-study effects in meta-analyses of controlled trials with binary endpoints. *Stat Med* 2006; **25**: 3443–57.
 - 40 Egger M, Smith GD, Phillips AN. Meta-analysis: principles and procedures. *BMJ* 1997; **315**: 1533–7.
 - 41 Dannon PN, Grunhaus L. Effect of electroconvulsive therapy in repetitive transcranial magnetic stimulation non-responder MDD patients: a preliminary study. *Int J Neuropsychopharmacol*. 2001; **4**: 265–8.
 - 42 De Vreede IM, Burger H, Van Vliet IM. Prediction of response to ECT with routinely collected data in major depression. *J Affect Disord* 2005; **86**: 323–7.
 - 43 Dombrovski AY, Mulsant BH, Haskett RF, Prudic J, Begley AE, Sackeim HA. Predictors of remission after electroconvulsive therapy in unipolar major depression. *J Clin Psychiatry* 2005; **66**: 1043–9.
 - 44 Kho KH, Zwinderman AH, Blansjaar BA. Predictors for the efficacy of electroconvulsive therapy: chart review of a naturalistic study. *J Clinical Psychiatry* 2005; **66**: 894–9.
 - 45 Lin C-H, Chen M-C, Yang W-C, Lane H-Y. Early improvement predicts outcome of major depressive patients treated with electroconvulsive therapy. *Eur Neuropsychopharmacol* 2015; **26**: 225–33.
 - 46 Loo CK, Mahon M, Katalinic N, Lyndon B, Hadzi-Pavlovic D. Predictors of response to ultrabrief right unilateral electroconvulsive therapy. *J Affect Disord* 2011; **130**: 192–7.
 - 47 Medda P, Mauri M, Toni C, Mariani MG, Rizzato S, Miniati M, et al. Predictors of remission in 208 drug-resistant depressive patients treated with electroconvulsive therapy. *J ECT* 2014; **30**: 292–7.
 - 48 Okazaki M, Tominaga K, Higuchi H, Utagawa I, Nakamura E, Noguchi M, et al. Predictors of response to electroconvulsive therapy obtained using the three-factor structure of the montgomery and Asberg depression rating scale for treatment-resistant depressed patients. *J ECT* 2010; **26**: 87–90.
 - 49 Piccinni A, Del Debbio A, Medda P, Bianchi C, Roncaglia I, Veltri A, et al. Plasma brain-derived neurotrophic factor in treatment-resistant depressed patients receiving electroconvulsive therapy. *Eur Neuropsychopharmacol* 2009; **19**: 349–55.
 - 50 Sivaprakash B, Chandrasekaran R, Sahai A. Predictors of response to electroconvulsive therapy in major depression. *Indian J Psychiatry* 2000; **42**: 148–55.
 - 51 Sobin C, Prudic J, Devanand DP, Nobler MS, Sackeim HA. Who responds to electroconvulsive therapy? A comparison of effective and ineffective forms of treatment. *Br J Psychiatry* 1996; **169**: 322–8.
 - 52 Tokutsu Y, Umene-Nakano W, Shinkai T, Yoshimura R, Okamoto T, Katsuki A, et al. Follow-up study on electroconvulsive therapy in treatment-resistant depressed patients after remission: a chart review. *Clin Psychopharmacol Neurosci* 2013; **11**: 34–8.
 - 53 Tominaga K, Okazaki M, Higuchi H, Utagawa I, Nakamura E, Yamaguchi N. Symptom predictors of response to electroconvulsive therapy in older patients with treatment-resistant depression. *Int J Gen Med* 2011; **4**: 515–9.
 - 54 Petrides G, Fink M, Husain MM, Knapp RG, Rush AJ, Mueller M, et al. ECT remission rates in psychotic versus nonpsychotic depressed patients: a report from CORE. *J ECT* 2001; **17**: 244–53.
 - 55 Cohen J. *Statistical Power Analysis for the Behavioral Sciences* (2nd edn). Routledge, 1988.
 - 56 Parker G. Defining melancholia: the primacy of psychomotor disturbance. *Acta Psychiatr Scand* 2007; **115** (suppl 433): 21–30.
 - 57 Dierckx B, Heijnen WT, van den Broek WW, Birkenhäger TK. Efficacy of electroconvulsive therapy in bipolar versus unipolar major depression: a meta-analysis. *Bipolar Disord* 2012; **14**: 146–50.
 - 58 Heijnen WT, Birkenhäger TK, Wiersma AI, van den Broek WW. Antidepressant pharmacotherapy failure and response to subsequent electroconvulsive therapy: a meta-analysis. *J Clin Psychopharmacol* 2010; **30**: 616–9.
 - 59 Nordenskjöld A, von Knorring L, Engström I. Predictors of the short-term responder rate of Electroconvulsive therapy in depressive disorders—a population based study. *BMC Psychiatry* 2012; **12**: 115.
 - 60 Sackeim HA, Prudic J, Devanand DP, Nobler MS, Lisanby SH, Peyser S, et al. A prospective, randomized, double-blind comparison of bilateral and right unilateral electroconvulsive therapy at different stimulus intensities. *Arch Gen Psychiatry* 2000; **57**: 425–34.
 - 61 Sackeim HA, Prudic J, Nobler MS, Fitzsimons L, Lisanby SH, Payne N, et al. Effects of pulse width and electrode placement on the efficacy and cognitive effects of electroconvulsive therapy. *Brain Stimul* 2008; **1**: 71–83.
 - 62 Leiknes KA, Von Schweder LJ, Høie B. Contemporary use and practice of electroconvulsive therapy worldwide. *Brain Behav* 2012; **2**: 283–344.
 - 63 Tor P, Bautovich A, Wang M, Martin D, Harvey SB, Loo C. A systematic review and meta-analysis of brief versus ultrabrief right unilateral electroconvulsive therapy for depression. *J Clin Psychiatry* 2015; **76**: e1092–8.
 - 64 Parker G, McCraw S. The properties and utility of the CORE measure of melancholia. *J Affect Disord*; 2017; **207**: 128–35.
 - 65 Snowden J. Should psychomotor disturbance be an essential criterion for a DSM-5 diagnosis of melancholia? *BMC Psychiatry* 2013; **13**: 160.
 - 66 Hickie I, Mason C, Parker G, Brodaty H. Prediction of ECT response: validation of a refined sign-based (CORE) system for defining melancholia. *Br J Psychiatry* 1996; **169**: 68–74.
 - 67 Fink M, Edward S, Donald K, Jules A, Koukopoulos A, Carroll B, et al. Melancholia: beyond DSM, beyond neurotransmitters. Proceedings of a conference, May 2006, Copenhagen, Denmark. *Acta Psychiatr Scand Suppl* 2007; **115**: 4–183.
 - 68 Rasmussen KG. Do patients with personality disorders respond differentially to electroconvulsive therapy? A review of the literature and consideration of conceptual issues. *J ECT* 2015; **31**: 6–12.

