

Wayne State University
DigitalCommons@WayneState

Library Scholarly Publications

Wayne State University Libraries

3-1-2011

Cultivating the Fully Engaged Librarian

Judith Arnold

Wayne State University, ay4047@wayne.edu

Veronica E. Bielat

Wayne State University, ag6887@wayne.edu

Anne Hudson

Wayne State University, al7470@wayne.edu

Recommended Citation

Arnold, Judith; Bielat, Veronica E.; and Hudson, Anne, "Cultivating the Fully Engaged Librarian" (2011). *Library Scholarly Publications*. Paper 44.
<http://digitalcommons.wayne.edu/libsp/44>

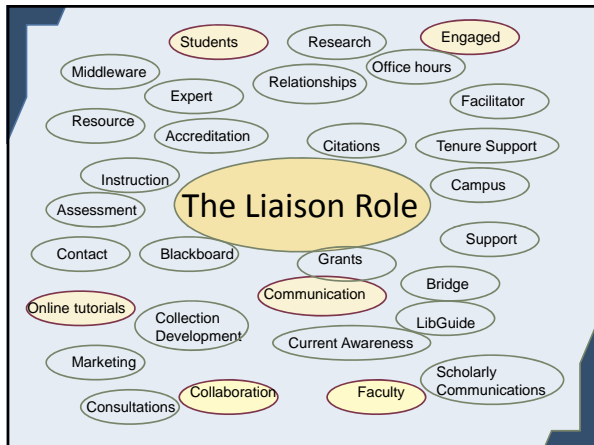
This Conference Proceeding is brought to you for free and open access by the Wayne State University Libraries at DigitalCommons@WayneState. It has been accepted for inclusion in Library Scholarly Publications by an authorized administrator of DigitalCommons@WayneState.

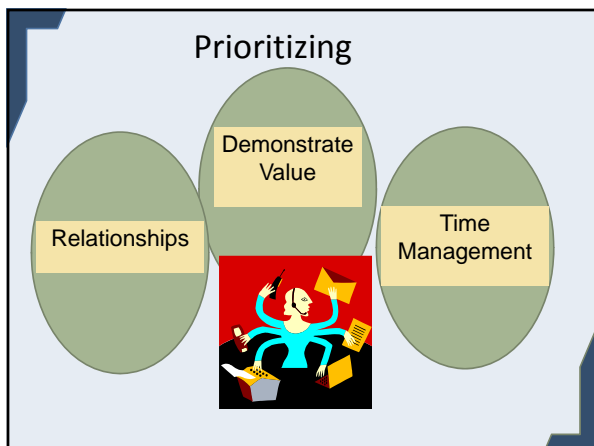
Cultivating the Fully Engaged Librarian



Anne Hudson
Judith Arnold
Veronica Bielat
Wayne State University Library System
<http://digitalcommons.wayne.edu/libsp/44/>

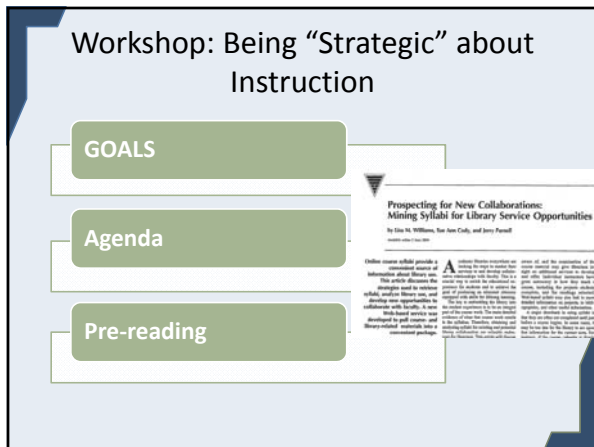
acrl 2011 March 30-April 2, 2011
Philadelphia, Pennsylvania











Identifying Strategic Courses



Indicators

- ENG 3010 (IC) Intermediate Writing
- CRI 4860 *Research Methods in Criminal Justice*
- COM 1010 (OC) Oral Communication: Basic Speech
- BA 31010 (CT) *Critical Thinking for Consumer Decisions*. Cr. 3

Categorize

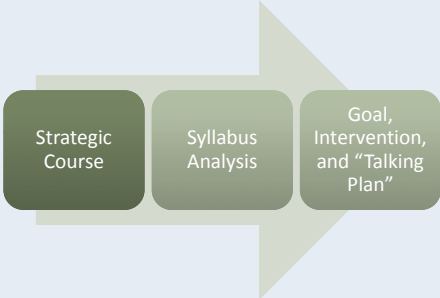
Familiarize – make aware of services, resources

Obtain – demonstrate basic understanding (test for competency)

Apply – apply learning to new situations

Explore – analyze, synthesize, evaluate

Make the Connection




Strategic Course

Syllabus Analysis

Goal, Intervention, and "Talking Plan"

Getting started with online instruction—cover the basics:

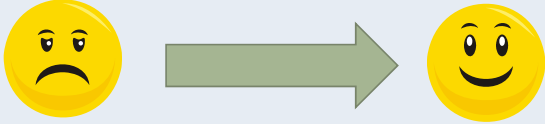


What is offered at your institution?

Where are they clustered?

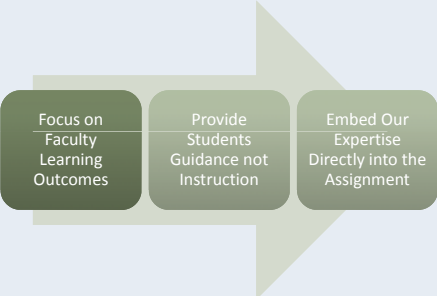
Any campus initiatives to support online teaching and learning?

Reducing Technology Anxiety



- Capitalize on what we have
- Provide style guidelines and templates
- Focused training
- Create a core of experts

Integrate into the Learning Experience



Focus on Faculty Learning Outcomes	Provide Students Guidance not Instruction	Embed Our Expertise Directly into the Assignment
---	--	---

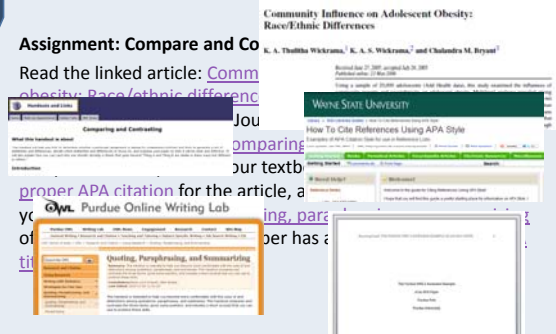
What does that look like?

Assignment: Compare and Contrast Paper
Locate a scholarly research article on race or ethnic differences and write a 3 page paper comparing and contrasting the author's analysis with Chapter 6 of our textbook. Use APA style.

What does that look like?

Assignment: Compare and Contrast

Read the linked article: [Community Influence on Adolescent Obesity: Race/Ethnic Differences](#)



Journal article snippet: "Community Influence on Adolescent Obesity: Race/Ethnic Differences" by K. A. Thailtha Wickrama, K. A. S. Wickrama, and Chandra M. Bryant. Published Jan 27, 2006. doi:10.1002/jad.2006.0340461101

Purdue Online Writing Lab: "Comparing and Contrasting" section.

Search engine results for "How To Cite References Using APA Style".

Or maybe like this?

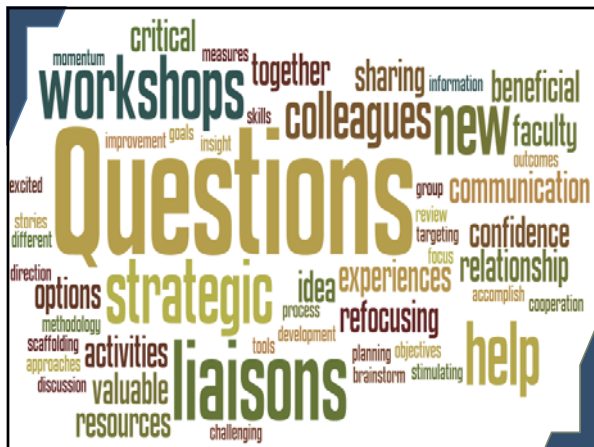
Assignment: Compare and Contrast Paper

Read the article linked below and write a 3 page paper comparing and contrasting the author's analysis with Chapter 6 of our textbook. Your paper should be in APA style, and include a title page.

Read this article: [Community influence on adolescent obesity: Race/ethnic differences](#) by Wickrama, Wickrama & Bryant (2006), Journal of Youth and Adolescence, 35(4), 641-461.

Additional resources to help you complete this assignment:

- Explanation of a [compare and contrast paper](#)
- How to properly [quote, paraphrase or summarize](#) text.
- Using [proper APA citation](#)
- How to properly format an [APA title page](#).



Thank You!

Find us at <http://engagedlibn.wetpaint.com>

Williams, K. (August 2009) A Framework for Articulating New Library Roles. Research Library Issues: A Bimonthly Report from ARL, CNI, and SPARC, no. 265 : 3-8. <http://www.arl.org/resources/pubs/rli/archive/rli265.shtml>.

Whatley, K. (August 2009). New Roles of Liaison Librarians: A Liaison's Perspective. Research Library Issues: A Bimonthly Report from ARL, CNI, and SPARC, no. 265: 29-32. <http://www.arl.org/resources/pubs/rli/archive/rli265.shtml>.

Williams, L. M., Cody, S. A., & Parnell, J. (2004). Prospecting for new collaborations: Mining syllabi for library service opportunities. *The Journal of Academic Librarianship*, v. 30 no. 4, 270-75.
