

3-14-2009

Reference Area Redesign: Do It Yourself on a Budget

Monique Andrews

Wayne State University, ag3808@wayne.edu

Mike Hawthorne

Wayne State University, ab1418@wayne.edu

Rhonda McGinnis

Wayne State University, aa4207@wayne.edu

Recommended Citation

Andrews, Monique; Hawthorne, Mike; and McGinnis, Rhonda, "Reference Area Redesign: Do It Yourself on a Budget" (2009).

Library Scholarly Publications. Paper 20.

<http://digitalcommons.wayne.edu/libsp/20>

This Conference Proceeding is brought to you for free and open access by the Wayne State University Libraries at DigitalCommons@WayneState. It has been accepted for inclusion in Library Scholarly Publications by an authorized administrator of DigitalCommons@WayneState.

A red pencil is positioned diagonally across the lower-left portion of the image, pointing towards the center. The background is a close-up of a piece of paper with a grid pattern, overlaid with a ruler. The ruler has markings and numbers, including '15', '16', and '17'. The overall lighting is warm and slightly blurred, creating a professional and focused atmosphere.

REFERENCE AREA REDESIGN: DO IT YOURSELF ON A BUDGET

**WAYNE STATE
UNIVERSITY**

Monique Andrews, Mike Hawthorne, & Rhonda McGinnis

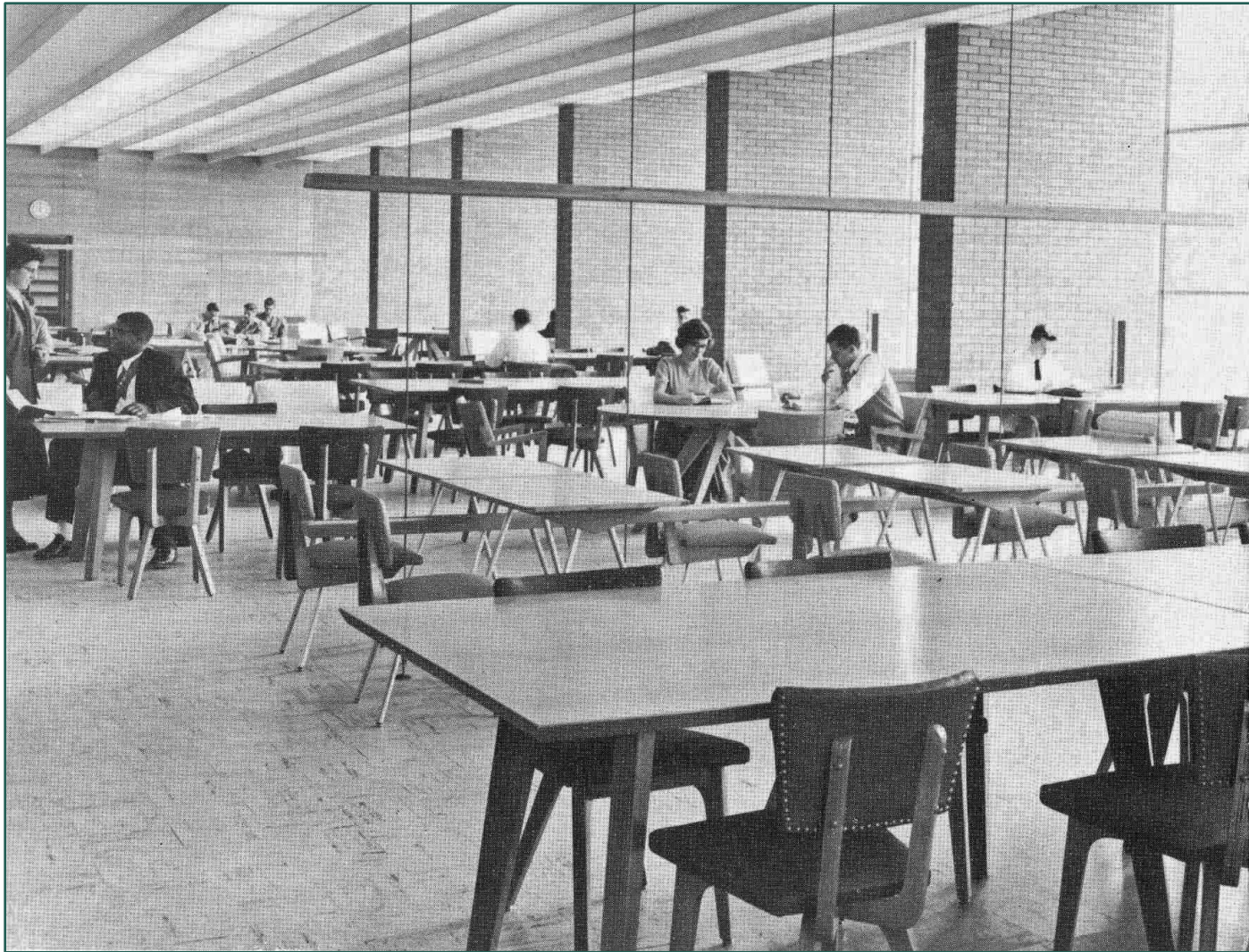
Purdy/Kresge Library Building

- ❑ Two buildings connected on first floor
- ❑ Both built in the early 1950's
- ❑ Each with an open floor plan
- ❑ Lots of large pillars
- ❑ Building at or near the top of University's capital projects list frequently over the previous 10-15 years
- ❑ Passed over because full renovation too costly
- ❑ Wireless Internet available throughout 1st floor

Purdy Reference Area When New



Vintage Kresge Reading Area



Project Background

University allocated money to replace carpet on 1st floor of both buildings.

Project budget would cover:

- Carpet
- Installation (& asbestos remediation)
- Moving contents out and back in
- Removal & replacement of power & data lines located on floor

Project Goals

- Redesign space to improve library service
 - Periodicals
 - Microforms
 - Reference Desk
- Retain or increase number of workstations
- Create additional study & laptop space
- Improve the overall ambiance of the space

Getting Our Bang for the \$

- Doing ~~much~~ all of the moving “in house”
- Reusing furniture & fittings w/in System
- Student learned *Autodesk Inventor* software to create 3-D models of the space and proposed configurations.
- Planned in flexibility & scalability

Collections & Services Affected

- ❑ Newspapers
- ❑ Current Periodicals
- ❑ Bound Periodicals
- ❑ Microforms and Readers
- ❑ Map Collection
- ❑ Reference Collection
- ❑ Reference Desk
- ❑ 56 Computer Carrels
- ❑ Study & laptop space



It is...



...What It was



Microfilm—Don't want to live with it; Can't live without it

- Moved 1/2 of microform collection to locked basement
 - Moved the ERIC documents and many newspaper collections
 - Moved what could easily be paged by circulation staff
- Moved 1/2 of it into the new reference area
- Purchased several newspaper historical backfiles & online collections
 - Improve Access
 - Reduce cabinets in Reference Area
- Microfilm is NOT going away → Seeking better Readers

...As Far as the Eye Can See



← Some of the cabinets In the Kresge Library before they were moved

Half moved to a room in the basement of Purdy →



The other half moved to the Reference Area of Purdy →



Reference Area Plans

- Librarians initially had few requests for the Desk
 - Felt the current location was fine
 - Wanted to stop snagging clothes & kicking cords
 - Requested new Plexiglas covers?
- Dean Yee established team specifically to investigate changes to the Reference Area & Desk
 - Wanted more thorough examination of issue
 - Had additional information from recent LIS Project
 - Included a tech-savvy LIS Graduate Student Assistant
 - Might be able to get additional funds if needed

LIS Class Project

Findings on Reference Desk & Its Flow

- ❑ Hard to find desk from some directions
- ❑ Crowded too close to computers so hard to queue
- ❑ Pillars create difficulties in giving directions
- ❑ Many computers blocked from view
- ❑ Does not promote roving
- ❑ Uncomfortable & awkward to use

Applying Technology to the Project

Tech-savvy Graduate Student had:

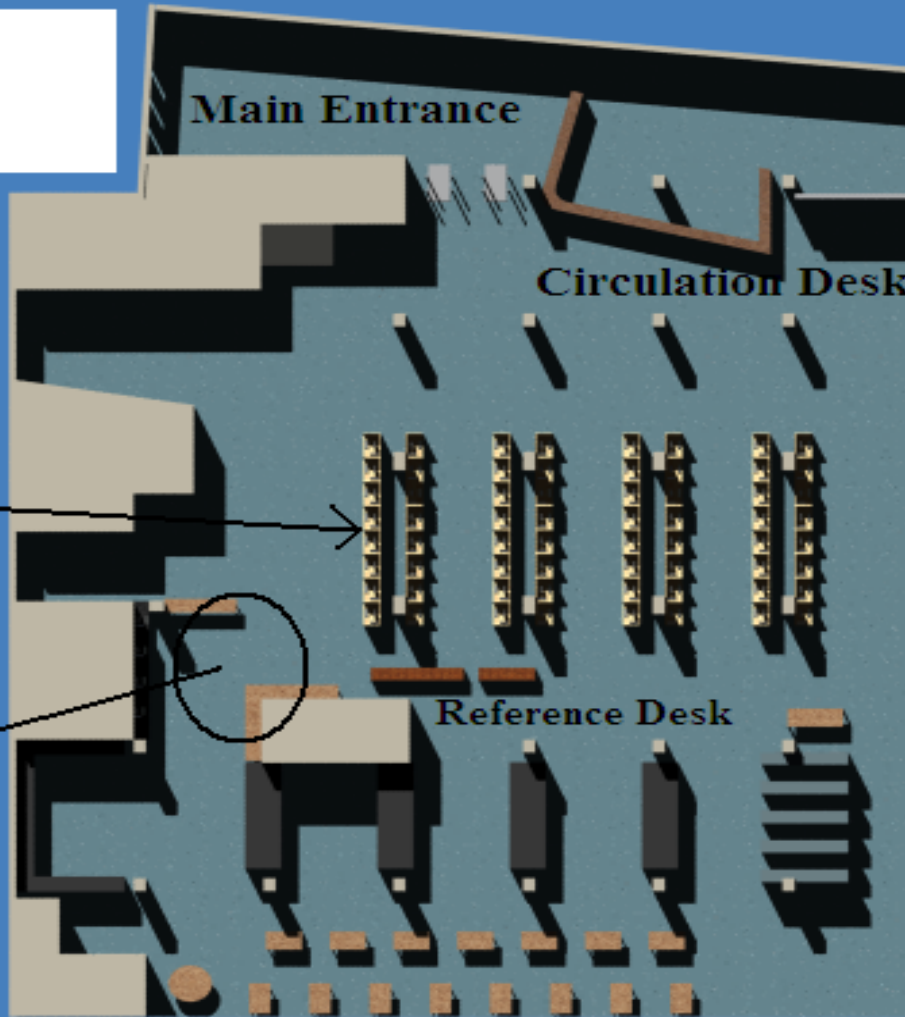
- ❑ Inexpensive access to Autodesk Inventor, 3-D modeling software
- ❑ Taught herself to use it.
 - Initially over a long weekend
 - Continued to learn its features over course of project
- ❑ Practiced with software by creating schematic of Reference Area and its original layout based on internal “blueprints”

Original P/K Reference Area Layout

**Diagram A:
Current Reference
Configuration**

56 Student Computers +
8 Community User Terminals
in high sided carrels

Printer Stations and New
Location for Microform
Readers



The Starting Point—The Desk



The Starting Point—The Area



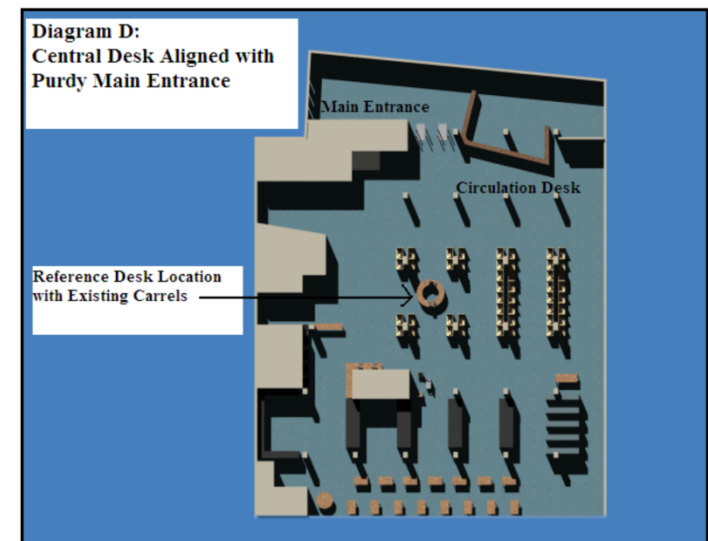
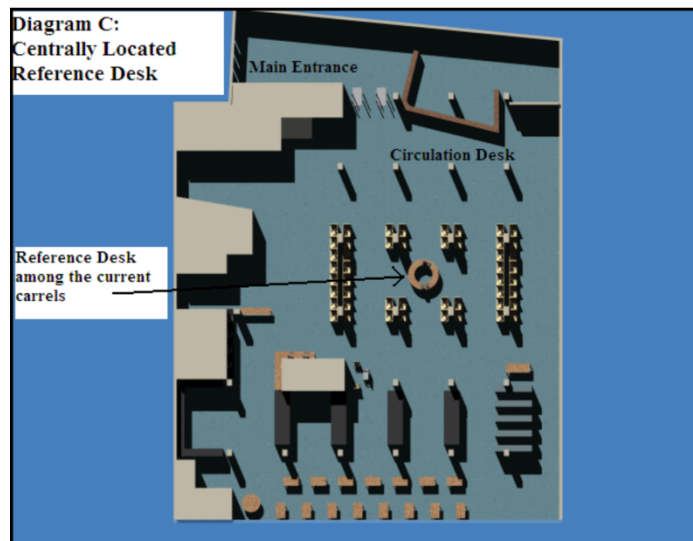
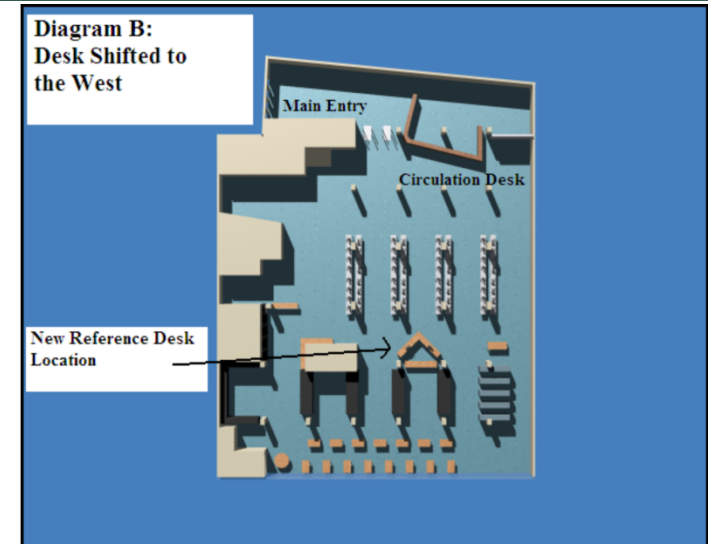
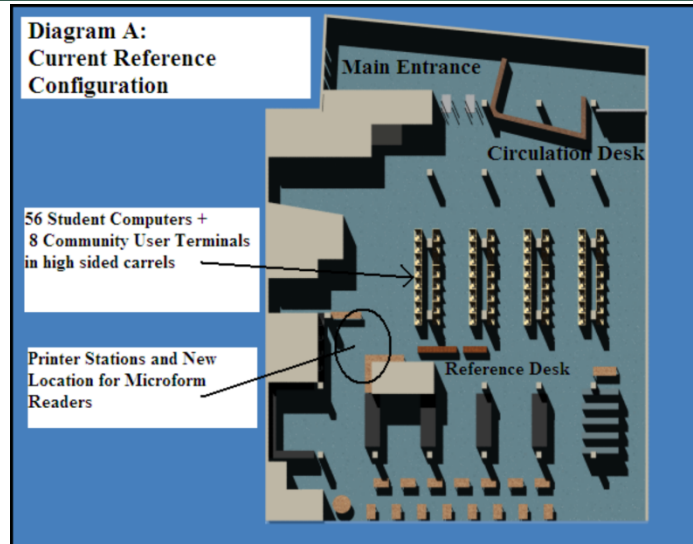
Initial Librarian Focus Group

Identified the following issues:

- Need increased visibility of Desk from both entrances
- Need improved sightlines to “hotspots” & Circ Desk
- Need improved access to computer users
- Need (at least) the same number of Student Computers
- Desks--Tired, out-of-date, & too low for patron comfort
- Desk area needed to be more self-contained to discourage patrons from:
 - Walking through to reach study tables
 - Accessing the Ready Reference Collection on their own

Developed & Critiqued Alternatives

Used software to try out some potential layouts and then showed the best ones to the librarians to get their comments

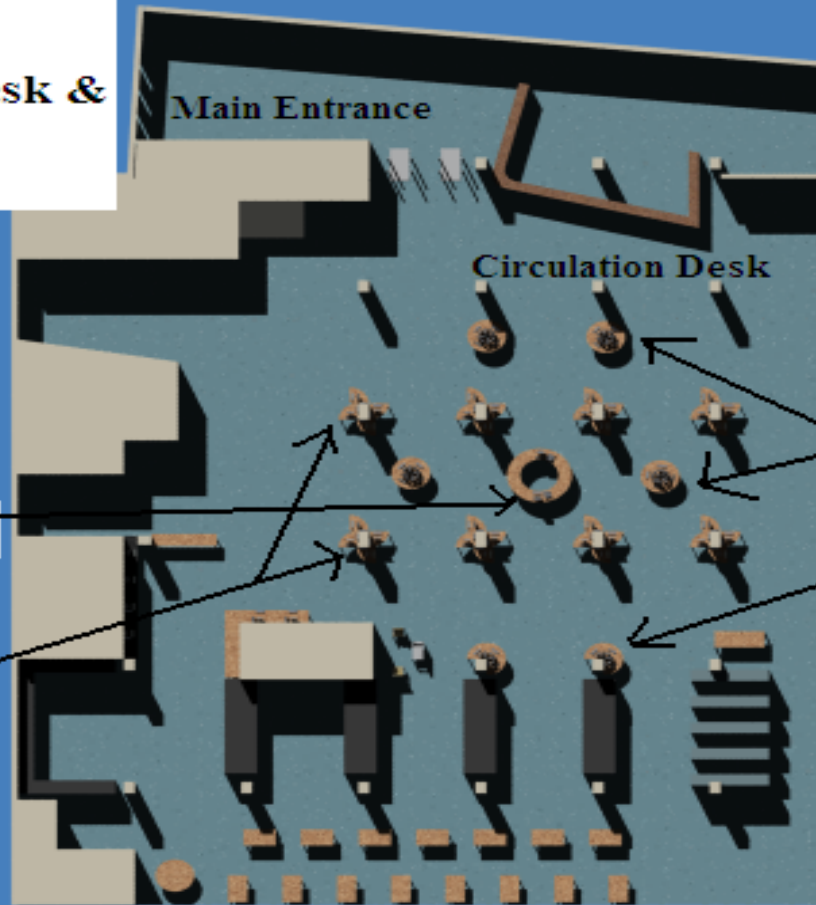


Final Recommended Layout

**Diagram E:
Final Recommended
Layout for Reference Desk &
Student Computers**

Reference Desk

Four small computer desks
"pinwheeled" around each of
the central pillars

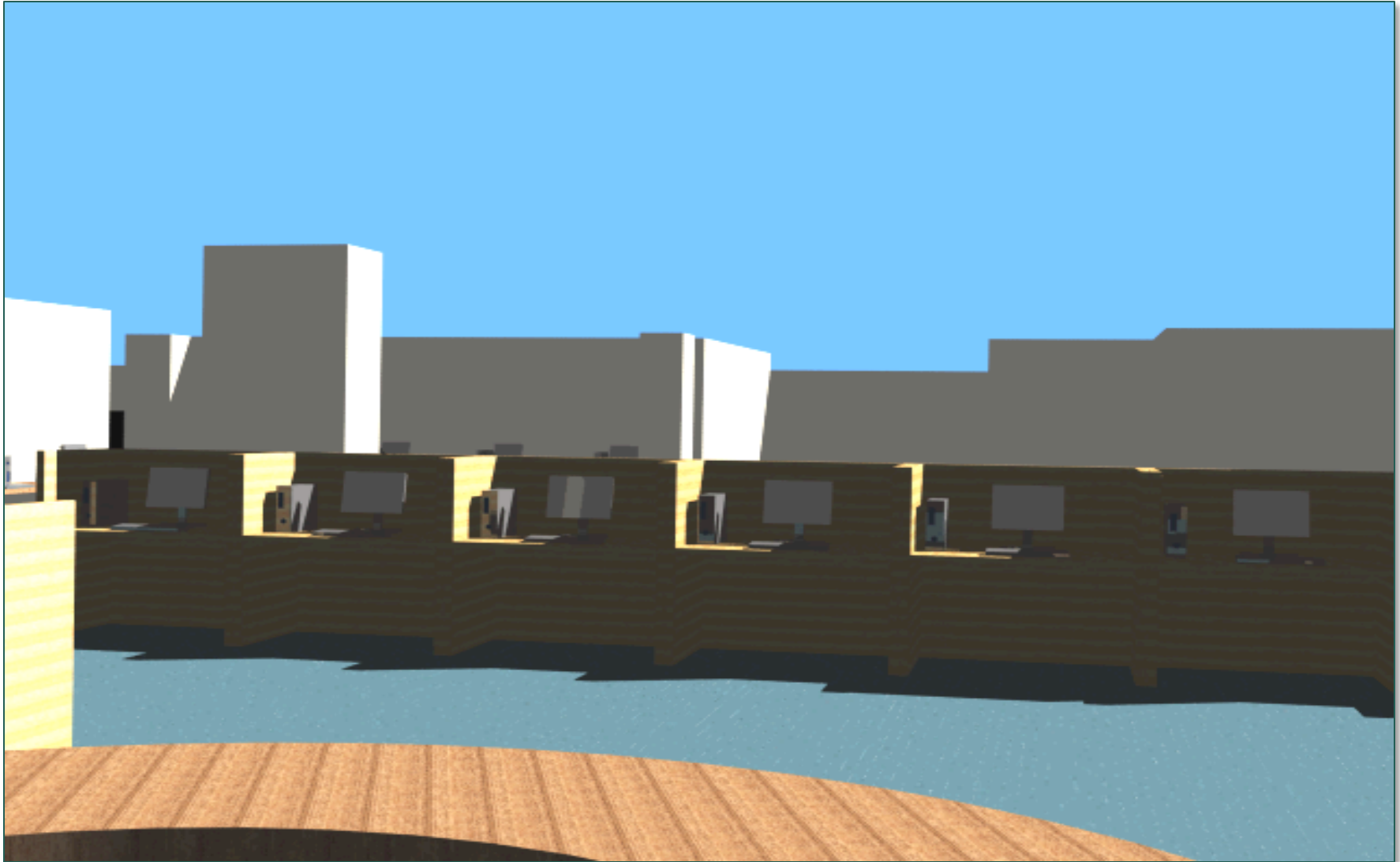


Round Tables
(or four
quarter-round
sections)
with 3-4
computers on
each

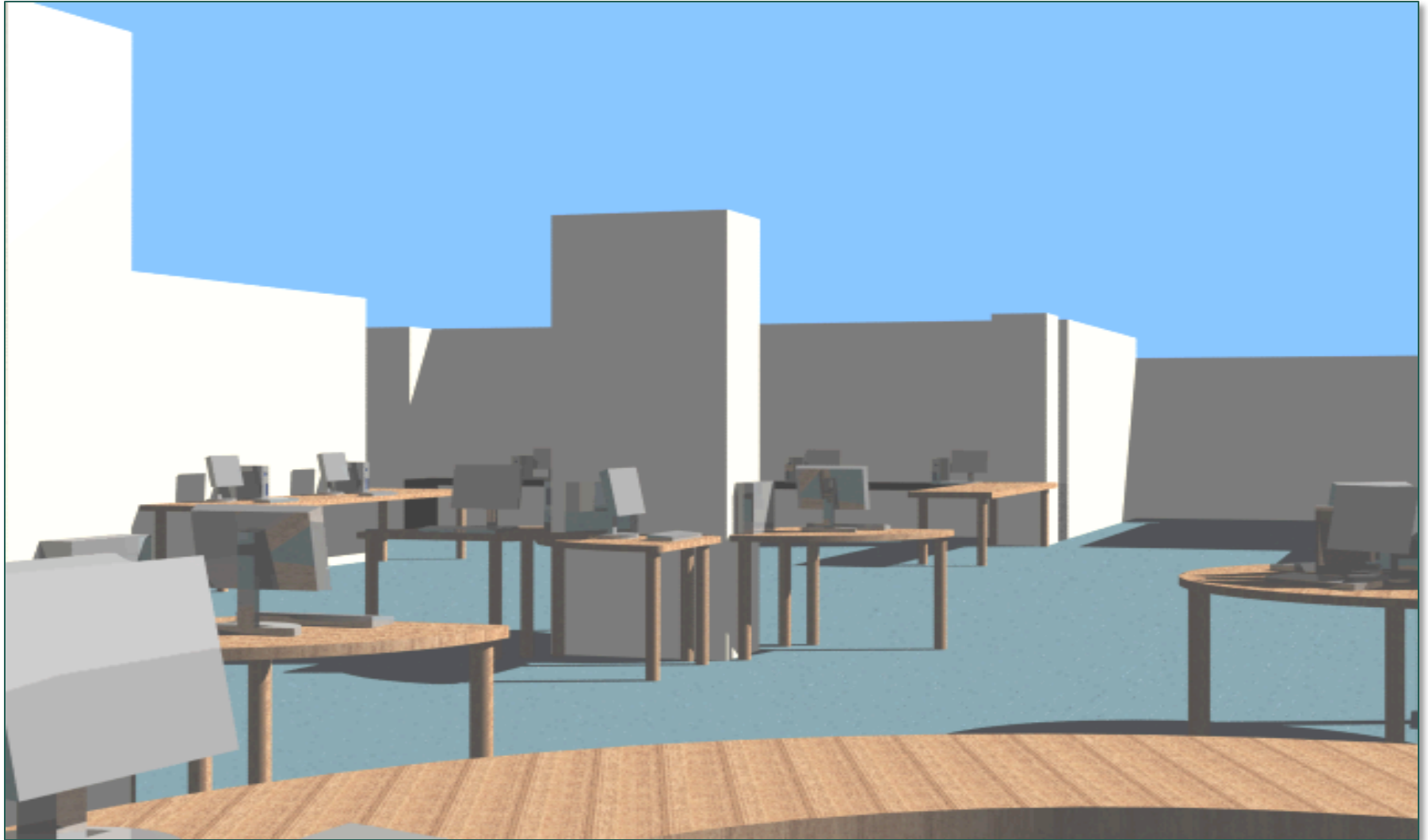
Preparing the Proposal

- Prepared both a text document and a multimedia PowerPoint for the proposal
- Included several layouts:
 - Original showing points of issue
 - Several alternatives that were considered
 - Final Recommended Layout
 - Scaled back version
- Eye level views of a couple of critical areas
- Before & after “fly through” videos

Eye Level View from Desk with Carrels



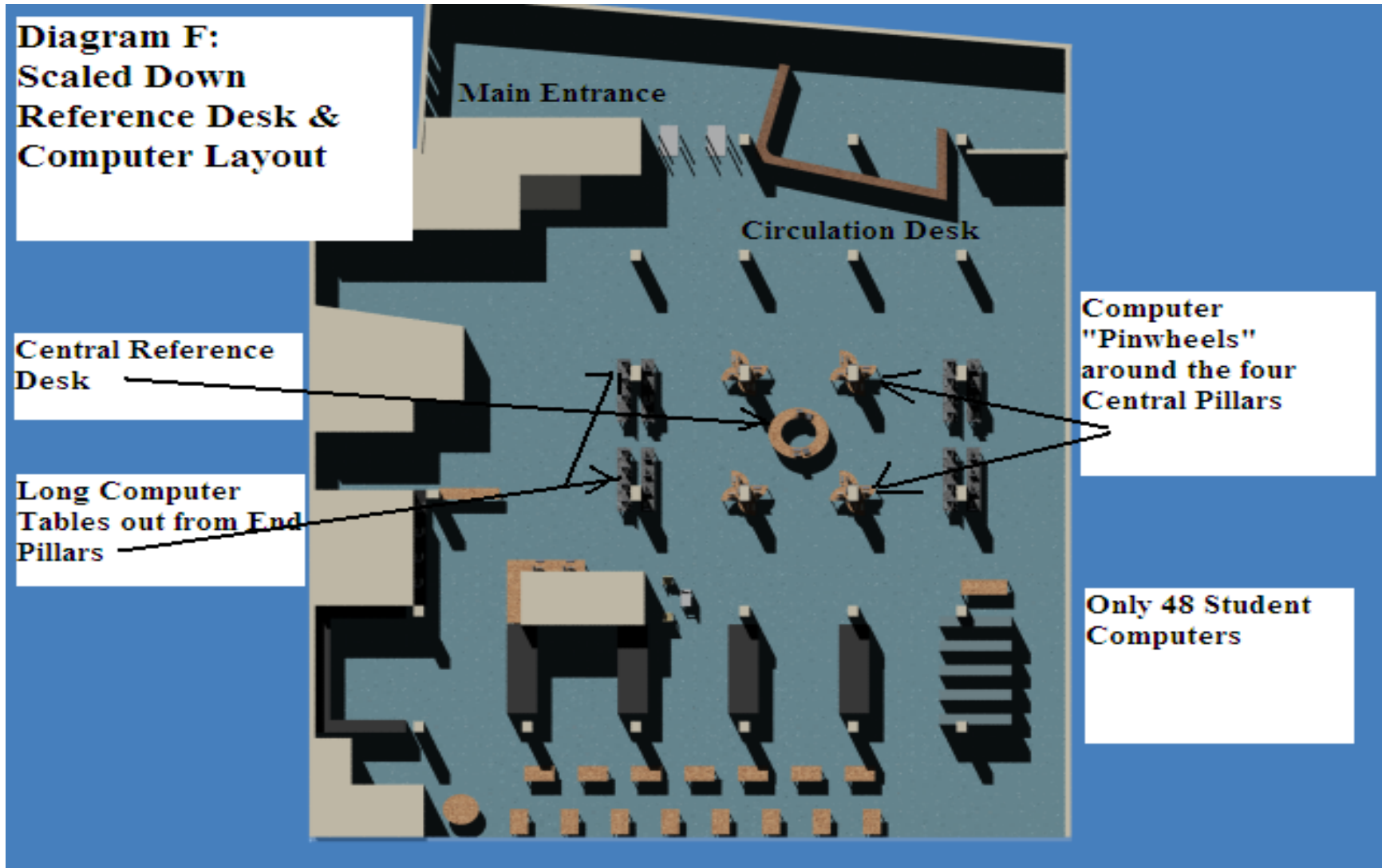
Eye Level View from Desk with Tables



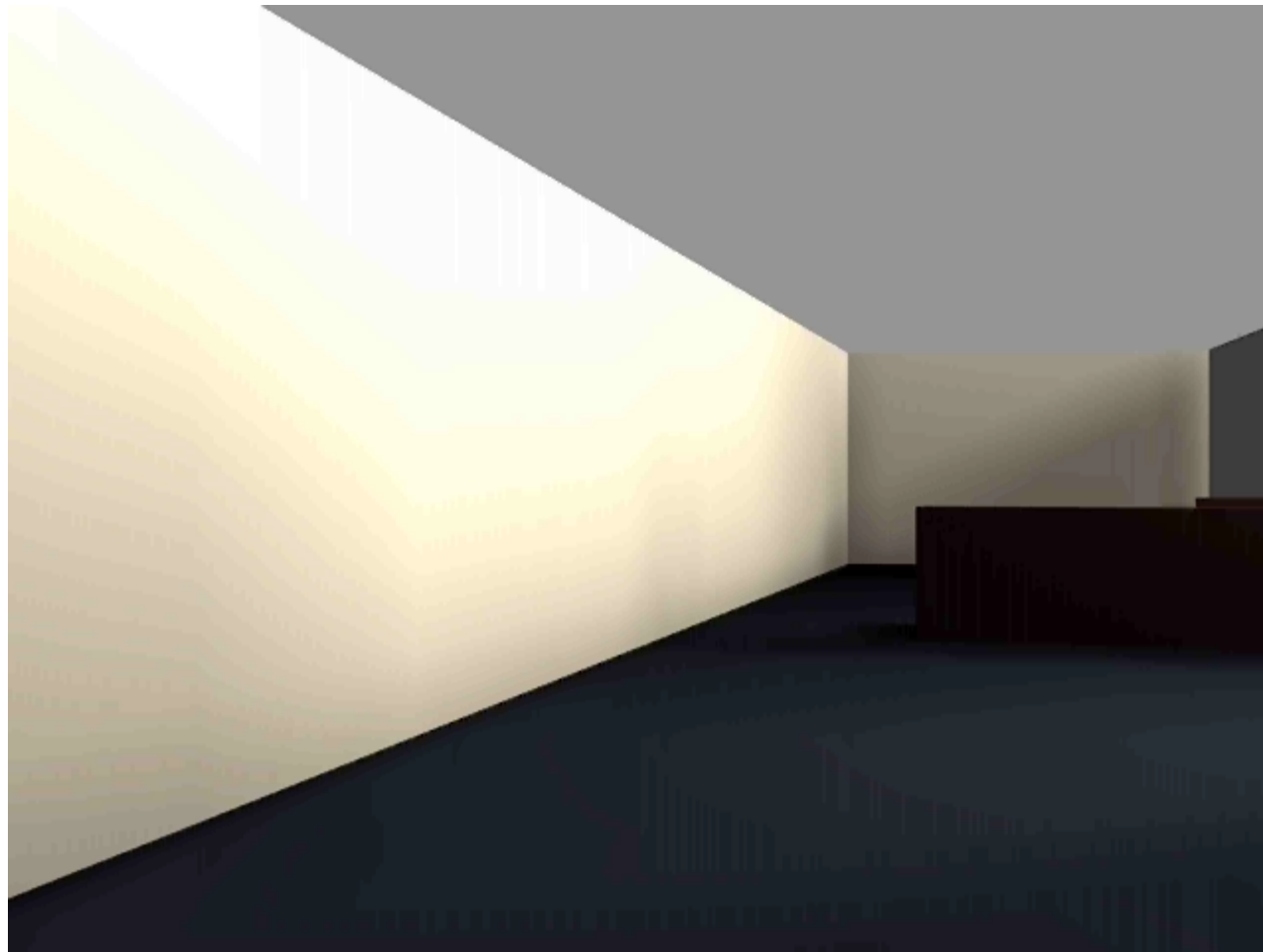
View in Real Life



Scaled-Down Plan for Reference Area



Preferred Design Fly-Through



Where the Software Really Mattered

- Multimedia PowerPoint helped sell the project at various levels throughout the Libraries & University
- Shown to:
 - Libraries' Facilities Manager
 - Dean and Libraries Management Team
 - University Library Committee
 - Provost
 - Furniture Vendor
- The graphics made it “real”, exciting, & fundable

Reference Redesign Outcomes

- Dean Yee, et. al. excited by proposal
 - Separated Reference Project from Carpet Project
 - Sought additional funding to implement the full Reference Redesign proposal
 - Brought in vendor and their designer to help with new furniture (much of it custom made)
- Year delay in final implementation
- At end of original Carpet project, Reference Area was TEMPORARILY returned to its original layout

Carpet Installation Service Issues



Temporary Headquarters



What We Needed to Survive

- ❑ Coin and copy card operated copiers
- ❑ Microfilm reader
- ❑ Microcard reader
- ❑ Small ready reference collection
- ❑ One reference computer and printer
- ❑ 20 student terminals
- ❑ Phone

Reference Collection: Time for a Fresh Outlook



A Good Old-Fashioned Weeding

- ❑ Initial goal of reducing the collection “footprint” by 25%
- ❑ The collection lacked focus, put together by various selectors
- ❑ No dedicated fund → feast or famine purchases
- ❑ Sorely out of date
- ❑ Had been weeded from time to time with mixed success

Here, There, & Everywhere

- ❑ Realized the collection could easily be weeded by 50%
- ❑ The location choices
 - Move to circulating collection (better access for patrons and ILL)
 - Move to stacks yet restrict access (mostly for multivolume sets)
 - Move to storage
 - Discard

New Rules to Weed Reference Collections

- ❑ If the country no longer exists it's books are NOT reference material
- ❑ It doesn't matter if it's the latest edition we've got if the information is so old it reeks!!!
- ❑ You can lead a patron to a print index but you can't make them search it
- ❑ If it hasn't been used in the last ten years, what makes you think it will get used in the next 10?

Reference Weeding Continued

- If one is good, 2 (or 3 or 4....or 10) is NOT better
- If we own in E, why print?
- One collection, one language (moved out the foreign language encyclopedias)
- In Reference or on the street?
- Who's Who, who cares?

Shelving Options Shrink

- ❑ Repurposed furniture, less than expected
- ❑ Cutting deeper required a re-envisioning of the collection and it's purpose
- ❑ Vision of a reference collection not a research collection



Final Result

An

81%

Decrease!!

A 21st Century Reference Collection



Installation--The Realities Set In

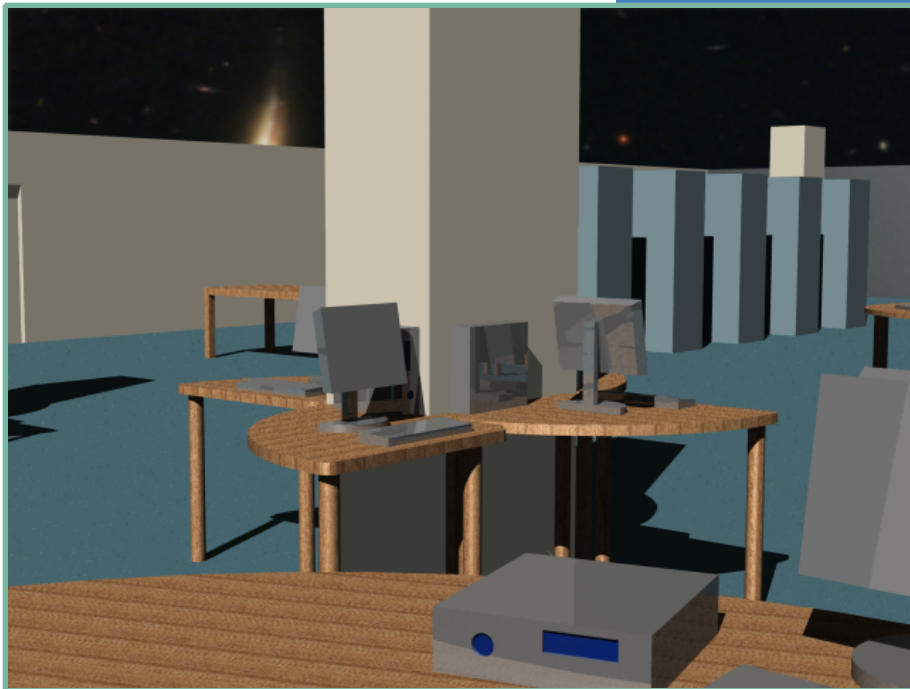


Installation Realities

- ❑ Pillars are rectangular not perfectly square
- ❑ Anchoring new light weight furniture
- ❑ Installing data and electrical supply in solid concrete floor and pillars
- ❑ Computer cords are really unattractive in real life
- ❑ Adjusted for breathing room at reference desk
- ❑ Created additional “pods” to maximize computers

Original Pinwheel Design

**Close-Up of
Desk and Computer
Layout from
Diagram E**



We've Got Legs—Sort of



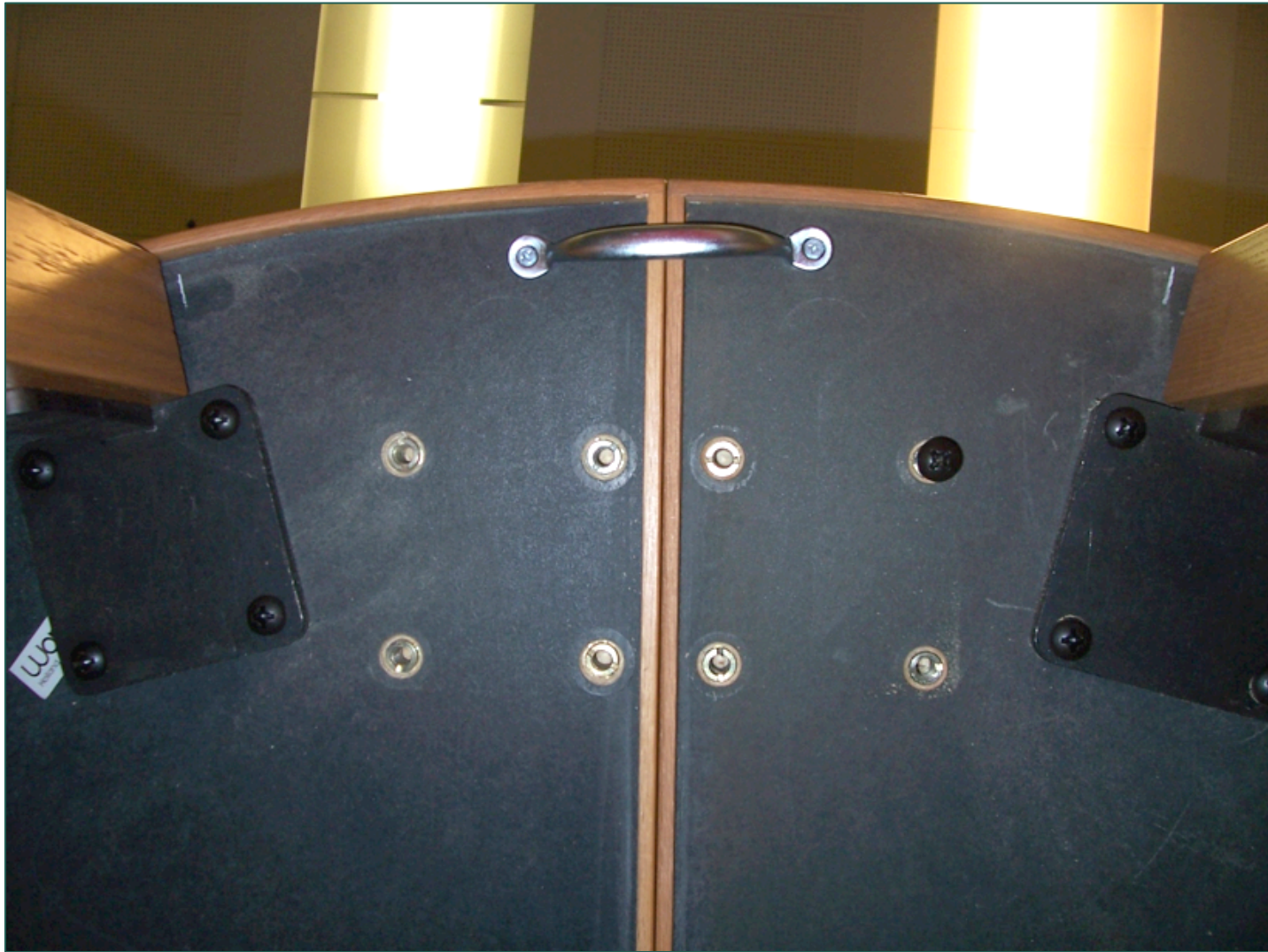
So, We Talk Amongst Ourselves...



From Pinwheels to Half Moons



Creative Solutions



Rewards of the Project



Remains of Ready Reference



Project Completed!!!!



A red pencil is positioned diagonally across the lower-left portion of the frame, pointing towards the upper-right. The background is a close-up of a piece of paper with a grid pattern, overlaid with a ruler. The ruler has markings and numbers, including '15', '16', and '17'. The overall image has a warm, slightly blurred aesthetic.

REFERENCE AREA REDESIGN: DO IT YOURSELF ON A BUDGET

**WAYNE STATE
UNIVERSITY**

Monique Andrews, Mike Hawthorne, & Rhonda McGinnis

Micro Collection: The last Refugees

