

# New species of the dancing semislug *Cryptosemelus* Collinge, 1902 (Eupulmonata, Ariophantidae) from Loei Province, northeastern Thailand with a key to genera of mainland Southeast Asian semislugs and a key to species of the genus

Sakboworn Tumpeesuwan<sup>1,2</sup>, Kitti Tanmuangpak<sup>3</sup>, Chanidaporn Tumpeesuwan<sup>1</sup>

**1** Department of Biology, Faculty of Science, Mahasarakham University, Kantharawichai District, Maha Sarakham 44150, Thailand **2** Palaeontological Research and Education Centre, Mahasarakham University, Kantharawichai District, Maha Sarakham 44150, Thailand **3** Program of Biology, Department of Science, Faculty of Science and Technology, Loei Rajabhat University, Loei 42000, Thailand

Corresponding author: Chanidaporn Tumpeesuwan (ctumpeesuwan@yahoo.com)

---

Academic editor: Menno Schilthuizen | Received 19 March 2023 | Accepted 29 April 2023 | Published 19 May 2023

---

<https://zoobank.org/2DB90CB6-E746-4887-B71B-A5D7D7092CEF>

---

**Citation:** Tumpeesuwan S, Tanmuangpak K, Tumpeesuwan C (2023) New species of the dancing semislug *Cryptosemelus* Collinge, 1902 (Eupulmonata, Ariophantidae) from Loei Province, northeastern Thailand with a key to genera of mainland Southeast Asian semislugs and a key to species of the genus. ZooKeys 1163: 47–59. <https://doi.org/10.3897/zookeys.1169.103650>

---

## Abstract

In this study, we describe a new dancing semislug from a limestone hill area in northeastern Thailand. *Cryptosemelus niger* **sp. nov.** differs from the three recognized congener species from western and southern Thailand, due to differences in their body and shell lobes coloration, appearance of penial caecum, shape and surface texture of penis and epiphallus, and radula formula and morphology.

## Keywords

Genital system, karst topography, limestone hill, mantle extensions, protective behavior, shell lobes

## Introduction

*Cryptosemelus* Collinge, 1902 is a member of family Ariophantidae. Its common characters comprise a shell with reduced number of whorls, body with well-developed mantle extensions, tail without caudal horn and genitalia without flagellum and amatorial organ. This genus differs from other long-tail semislug genera described from the Malay Peninsula. It differs from *Apoparmarion* due to more shell whorls and the absence of a caudal horn, flagellum and dart apparatus; and, it differs from *Paraparmarion* by the presence of both right and left shell lobes, whereas, the latter genus presents only a right shell lobe (Collinge 1902; Pholyotha et al. 2021a) (Table 1).

*Cryptosemelus* has been referred to as a ‘dancing semislug’ because of its dance-like movement that it makes when it is disturbed or attacked (Collinge 1902). This protective behavior has also been reported in other species, including *Laocaia simori* Dedov & Schneppat, 2019 in Dedov et al. (2019), *Cryptaustenia altatorial* Wiktor, 2002 and *Cryptaustenia mirabilis* Wiktor, 2002, *Muangnua arborea* Tumpeesuwan & Tumpeesuwan, 2019; *Cryptosemelus gracilis* Collinge, 1902, *C. betarmon* Pholyotha, 2021 and *C. tigrinus* Pholyotha, 2021 in Pholyotha et al. (2021a), *Ibycus* spp. and *Helicarion* spp. (Junn Kitt Foon, pers. comm.)

According to a recent study by Pholyotha et al. (2021a), the type species of the genus, *Cryptosemelus gracilis*, and the recently named species *C. betarmon* and *C. tigrinus* were studied and described from their genital anatomy and radula morphology. These three species are characterized by differences in the anatomical details of their penis, epiphallus and spermatophore. We discovered and examined this lovely semislug from a limestone hill in Loei Province, Thailand, and it possesses distinct characters of external shell morphology, mantle lobes coloration, radula and genital organs. Thus, we describe it here as a new species of *Cryptosemelus*.

## Material and methods

Sixty specimens were collected from November to December 2012, June to September 2013, and 12<sup>th</sup> October 2018 in the Phu Pha Lom limestone area (17°33'62"N, 101°52'31"E), elevation about 380–390 m above mean sea level, in the Mueang Loei District, Loei Province, northeastern Thailand (Fig. 1). The specimens were composed of fifty empty shells and 10 living specimens, which were collected from both leaf litter and the ground surface. The living specimens were photographed in their natural habitat (Figs 2B, 3), and then euthanized and preserved in 70 (v/v) ethanol for morphological and anatomical studies. Specimens were classified and identified from the literature, such as Collinge (1902), Blanford and Godwin-Austen (1908), Solem (1966), Schileyko (2003) and Pholyotha et al. (2021a). For the descriptive study, adult shells were measured for size using a vernier caliper and the number of whorls were counted. Photomicrographs were taken using a scanning electron microscope (JEOL, JSM-6460 LV) housed at the Central Laboratory, Faculty of Science, Mahasarakham University, Thailand. Eight specimens were dissected and examined under a stereoscopic light microscope.

**Table 1.** Comparison of morphological characters among three semislug genera, *Cryptosemelus*, *Apoparmarion* and *Paraparmarion* (data from Collinge 1902; Schileyko 2003; Pholyotha et al. 2021a).

Characters	<i>Cryptosemelus</i>	<i>Apoparmarion</i>	<i>Paraparmarion</i>
Number of shell whorls	3–4	2	3–4
Left shell lobe	Present	Present	Absent
Caudal horn	Absent	Present	Absent
Flagellum	Absent	Present	No information
Dart apparatus	Absent	Present	No information

Descriptions of the new species herein are attributed to the first and the third authors, as indicated below. Type specimens and other voucher specimens were deposited in the Natural History Museum of Mahasarakham University, Maha Sarakham, Thailand (NHMSU).

The abbreviations used were as defined by Blanford and Godwin-Austen (1908), Solem (1966), Pholyotha et al. (2020) and Pholyotha et al. (2021a, b): **ag**, albumen gland; **at**, atrium; **e1**, portion of epiphallus nearer to penis; **e2**, portion of epiphallus nearer to retractor muscle; **fo**, free oviduct; **gd**, gametolytic duct; **gs**, gametolytic sac; **hd**, hermaphroditic duct; **ldl**, left dorsal lobe; **lsl**, left shell lobe; **ovt**, ovotestes; **p**, penis; **prm**, penial retractor muscle; **pro**, prostate gland; **rsl**, right shell lobe; **v**, vagina; **vd**, vas deferens; **ut**, uterus.

For the description of the genital system; ‘proximal’ refers to the region closest to the genital opening and ‘distal’ refers to the region outermost from the genital opening.

## Results

### Systematic description

#### Superfamily Helicarionoidea Bourguignat, 1877

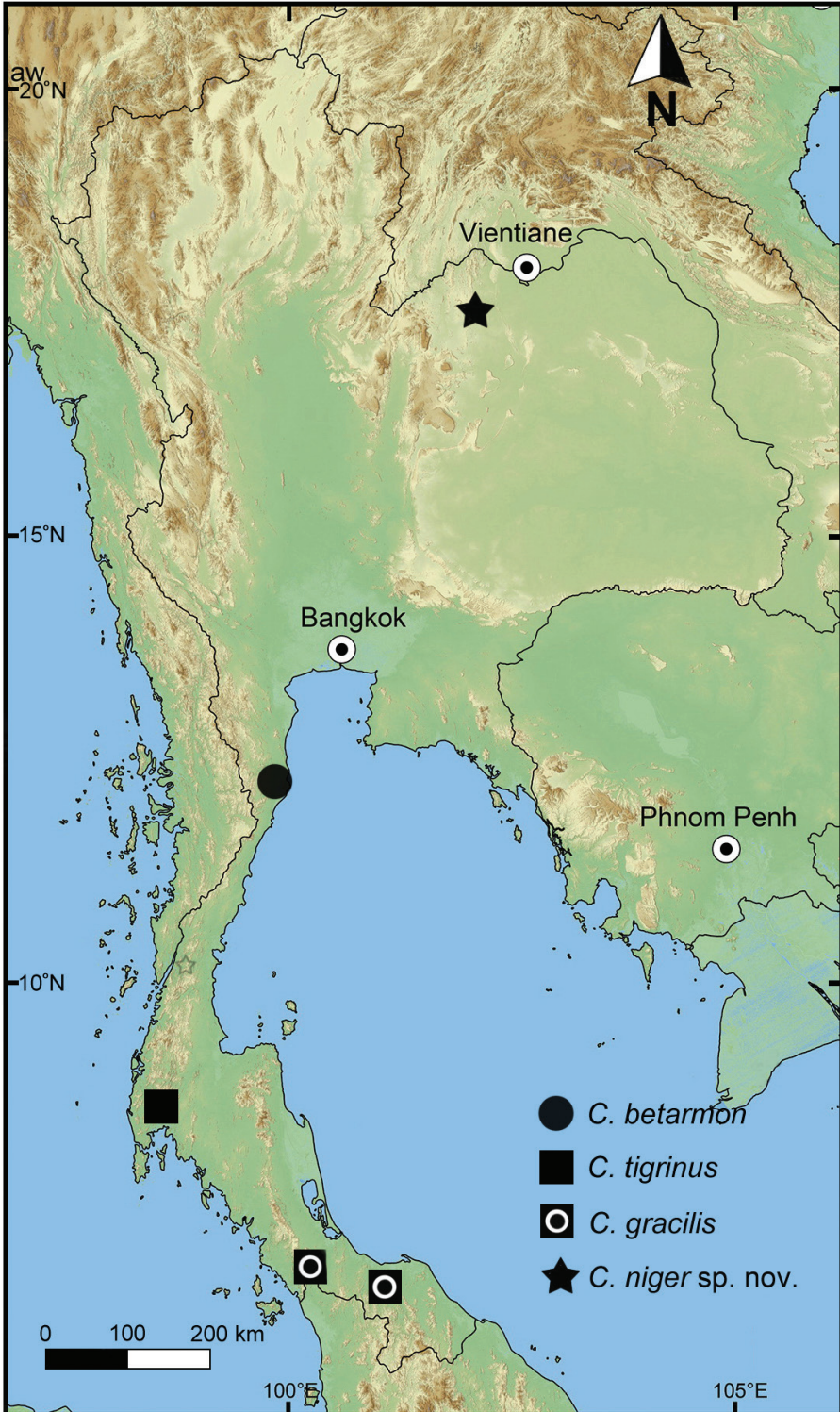
#### Family Ariophantidae Godwin-Austen, 1883

#### Subfamily Ostracolethinae Simroth, 1901

#### Genus *Cryptosemelus* Collinge, 1902

*Cryptosemelus* Collinge, 1902: 76. Blanford and Godwin-Austen 1908: 180. Thiele 1931: 640. Zilch 1959: 326. Vaught 1989: 97. Schileyko 2003: 1332. Bank 2017: 53. Inkhavilay et al. 2019: 75. Pholyotha et al. 2021a: 43–65.

**Type species.** *Cryptosemelus gracilis* Collinge, 1902. *Cryptosemelus* has a reduced shell of three to four whorls, well-developed mantle extensions with two dorsal lobes and right shell lobe covering the apex and larger than the left shell lobe. Caudal horn absent. Genital system without flagellum and dart apparatus.



**Figure 1.** Map of type locality of *Cryptosemelus niger* S. Tumpeesuwan & C. Tumpeesuwan, sp. nov.

***Cryptosemelus niger* S. Tumpeesuwan & C. Tumpeesuwan, sp. nov.**<https://zoobank.org/FA7C7967-4A62-4A6E-992C-4BE2E6DC9B36>

Figs 1–4

*Cryptaustenia* sp. Tanmuangpak 2016: 109–110.*Cryptaustenia* sp. Chimsaeng 2019: 41–42.

**Type material.** *Holotype*. NHMSU-00054 (Fig. 3). Phu Pha Lom limestone area, Mueang Loei District, Loei Province, northeastern Thailand, coll. Kitti Tanmuangpak, Nov. 2012. *Paratypes*. NHMSU-00055. Same locality and same date as holotype.

**Type locality.** Phu Pha Lom limestone area, Mueang Loei District, Loei Province, Thailand.

**Diagnosis.** Animal with blackish body, shell lobes with blackish reticulated skin (Figs 2, 3). Genitalia with very short cylindrical vagina, smooth elongated cylindrical epiphallus, without penial caecum (Fig. 4). Radula with bicuspid lateral teeth (Fig. 5B, C).

**Description.** (empty shells = 8, living specimen = 4) *Shell* (Fig. 2A). Shell globose, small size (shell height  $6.03 \pm 0.71.00$  mm, shell width  $9.72 \pm 1.32$  mm), shell imperforate, thin, smooth, dark brown color; transparency, aperture large (aperture height  $5.28 \pm 0.68$  mm and aperture width  $5.71 \pm 0.81$  mm).

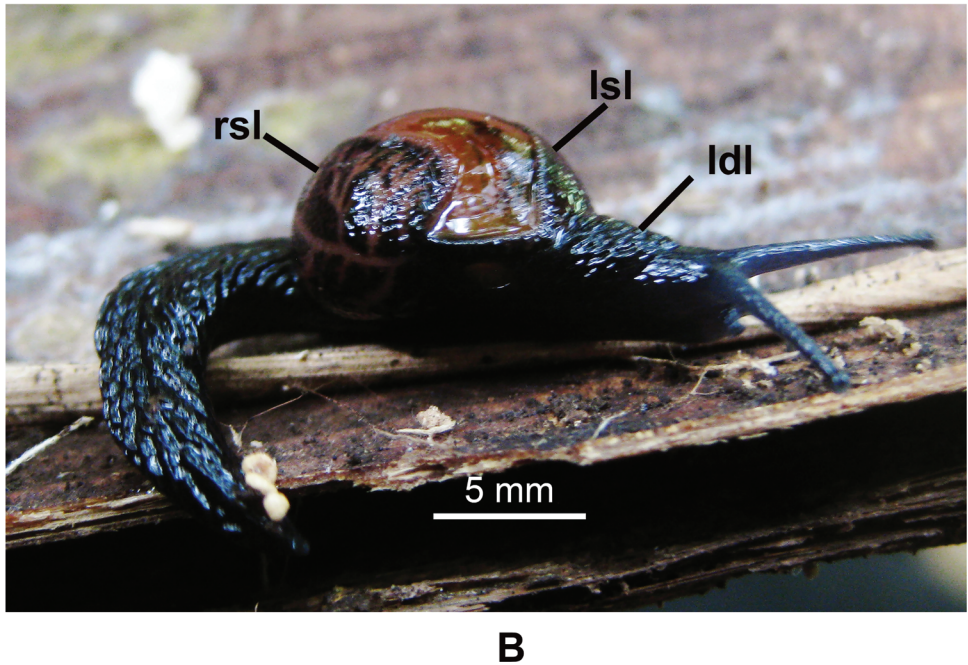
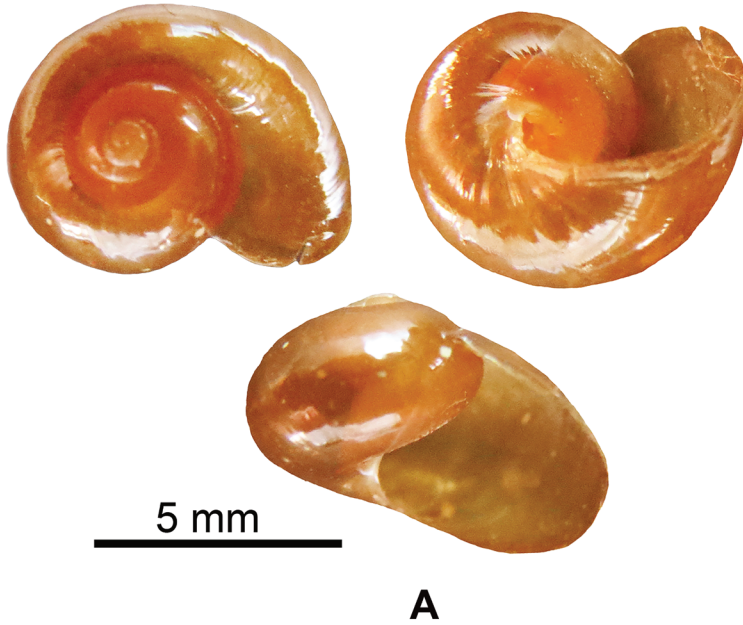
**Genital system** ( $N = 3$ ) (Fig. 4). Atrium (at) short. Penis rather long and cylindrical, with thin penial sheath covering entire penis. Penial retractor muscle (prm) present, short, thin and attached at junction of e1 and e2. Epiphallus (e1+e2) length is slightly equal to penis length, surface smooth, e1 cylindrical and gradually smaller in diameter, e2 cylindrical and larger than e1. Flagellum absent. Vas deferens long. Vagina is shorter than penis, cylindrical. Gametolytic duct (gd) thickened at base, gametolytic sac (gs) swollen gland at distal end. Free oviduct (fo) is shorter than vagina. Uterus and prostate gland long and stout.

**Radula** ( $N = 3$ ) (Fig. 5). Teeth arranged in a wide V-shape with half row formula: 1-7-70+teeth. Central teeth symmetric tricuspid. Lateral teeth and marginal teeth gradually changing from broad to narrow bicuspid.

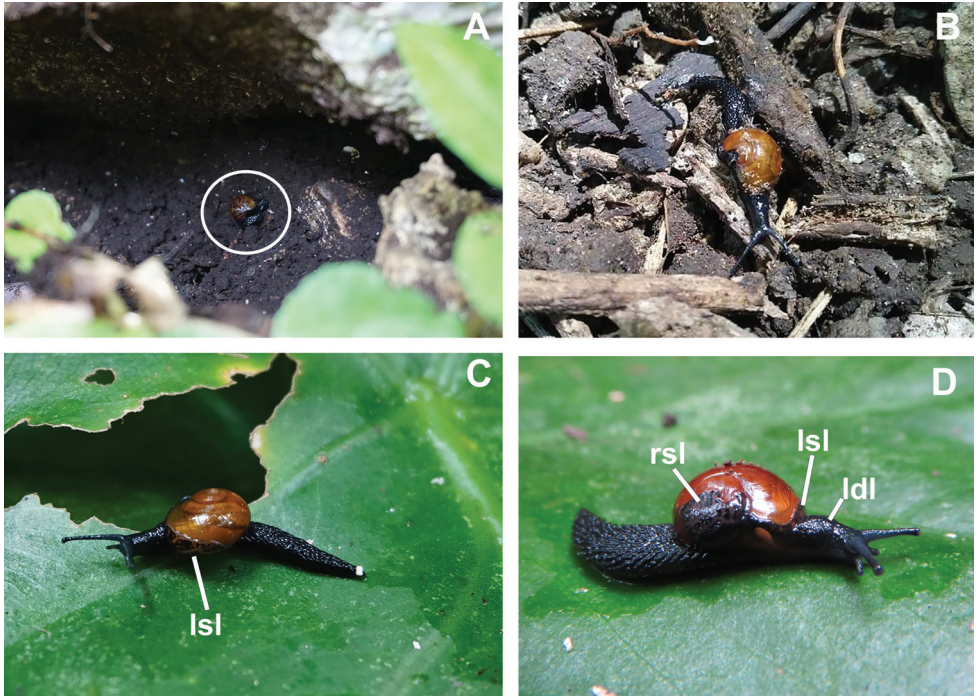
**External appearance** (Figs 2B, 3). Living semislug with reticulated skin, blackish to dark body marked by conspicuous grooves running downward. Four mantle extensions well developed and same color body. Shell lobes do not cover entire shell. Caudal horn absent.

**Etymology.** The species name “*niger*” is derived from Latin word, meaning “black” referring to blackish body and mantle extensions.

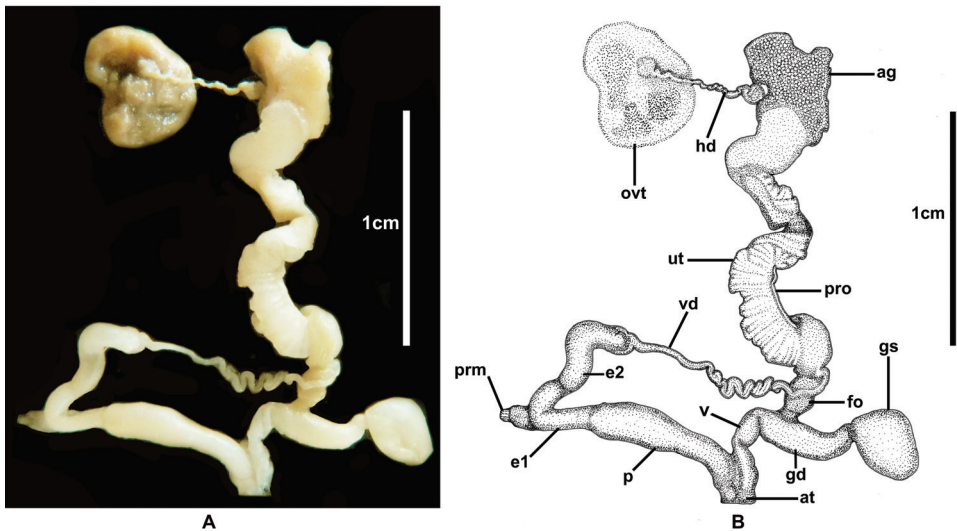
**Distribution, habitat and behavior observations.** *Cryptosemelus niger* sp. nov. is a species restricted to the dry evergreen forest that covers the Phu Pha Lom limestone area, Loei Province, Thailand. We searched after rain and found the specimens normally hiding on the ground and in the leaf litter. When the snails were disturbed, they escaped by quickly flipping and wagging their tail. Information on its natural predators is unknown, but the carnivorous land snails, *Discartemon* sp., *Oophana* sp. (Streptaxidae), and *Sinoennea loeiensis* Tanmuangpak & S. Tumpeesuwan, 2015 (Diapheridae) were found in the same locality (Tanmuangpak et al. 2012; Tanmuangpak et al. 2015; Tanmuangpak 2016).



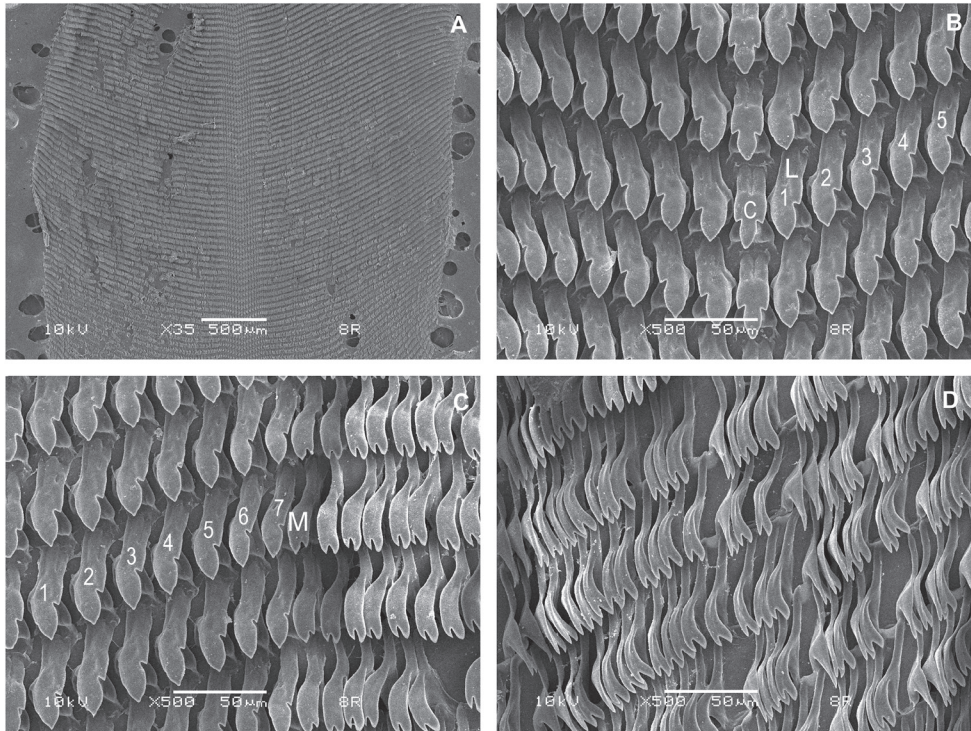
**Figure 2.** *Cryptosemelus niger* S. Tumpeesuwan & C. Tumpeesuwan, sp. nov. Photograph by Kitti Tanmuangpak **A** shell morphology of holotype NHMSU-00054 **B** living snail.



**Figure 3.** *Cryptosemelus niger* S. Tumpeesuwan & C. Tumpeesuwan, sp. nov. Living snail in natural habitats. Photograph by Chanidaporn Tumpeesuwan 12 December 2018 **A** *C. niger* crawling on soil in limestone crevice (white circle) **B** close-up view in living position **C, D** semislug was moved to green leaf for taking photo **C** left side represents left shell lobe (lsl) **D** right side represents right shell lobe (rsl), left shell lobes (lsl), and left dorsal lobe (ldl).



**Figure 4.** Genital system of *Cryptosemelus niger* S. Tumpeesuwan & C. Tumpeesuwan, sp. nov. (paratype NHMSU-00055) **A** photograph and **B** drawing by Kittit Tanmuangpak.



**Figure 5.** Radula morphology of *Cryptosemelus niger* S. Tumpeesuwan & C. Tumpeesuwan, sp. nov. (paratype NHMSU-00055) **A** radula plate, teeth rows arranged in wide V-shape **B** close-up view of middle part of radula **C** close-up view of right side of radula **D** close-up view of right side of radula showing marginal teeth. Central teeth indicated by ‘C’; lateral teeth indicated by ‘L’; marginal teeth indicated by ‘M’.

**Remarks.** *Cryptosemelus niger* sp. nov. differ from other *Cryptosemelus* species by its black body and mantle lobes. The shell seems to have a more rapidly descending whorl than in *C. gracilis* and *C. betarmon*, but is similar to *C. tigrinus*. *Cryptosemelus gracilis* also lack a penial caecum but differs in the undulated surface patch on the proximal part of e2. The epiphallus and penis are cylindrical without a caecum, diverticulum, and granulate surface. The radula of the new species differs from all *Cryptosemelus* in having bicuspid lateral teeth, whereas other species have tricuspid lateral teeth (Table 2, Figs 2A, B, 3A–D, 4, 5B–D).

## Discussion

The absence of a caudal horn is the unique character shared between *Cryptosemelus* and *Paraparmarion* (Collinge 1902; Blanford and Godwin-Austen 1908; Solem 1966; Schileyko 2002, 2003; Pholyotha et al. 2021a). *Cryptosemelus* differs from *Paraparmarion* in that the left shell lobe is well developed, whereas it is missing in *Paraparmarion* (Collinge 1902; Pholyotha et al. 2021a).



**Table 2.** Comparison of shell, genital system and radula of *Cryptosemelus* spp. (data for *C. gracilis*, *C. betarmon* and *C. tigrinus* based on Pholyotha et al. 2021a).

Characters	<i>C. gracilis</i>	<i>C. betarmon</i>	<i>C. tigrinus</i>	<i>C. niger</i> sp. nov.
<b>Shell:</b>				
Shape	Less, globose	Depressed, subglobose	Globose	Globose
Shell width	Up to 6.6 mm	Up to 7.4 mm	Up to 10.7 mm	Up to 11.04 mm
Shell height	Up to 4.2 mm	Up to 4.1 mm	Up to 7.6 mm	Up to 6.74 mm
Whorls number	3 ½–4	3 ½–4	4–4 ½	3–4
Shell color	Pale golden amber	Pale yellowish with olive tinge	Pale yellowish with olive tinge	Dark brown transparent
<b>Living snails:</b>				
Shell lobes coloration	Monochrome blue-gray to blackish	Monochrome pale to dark-grayish	Pale yellowish-orange banded	Blackish reticulated skin
<b>Radula:</b>				
Radula formula	1-(19-20)-38	1-(27-28)-37	1-(38-39)-44	1-7-70+
Central tooth	Tricuspid	Tricuspid	Tricuspid	Tricuspid
Lateral teeth	Tricuspid	Tricuspid	Tricuspid	Bicuspid
Marginal teeth	Tricuspid	Bicuspid	Bicuspid	Bicuspid
<b>Genital system:</b>				
Epiphallus e2: Proximal part	Enlarged with irregularly undulated surface patch	Enlarged and with undulated surface	Cylindrical smooth surface	Long cylindrical with smooth surface
Epiphallus e2: Distal part	Smooth surface	Cylindrical and gradually tapering to distal end, smooth surface	Cylindrical with prominently granulated surface	Long cylindrical with smooth surface
Penial caecum	Absent	Present	Present	Absent
Vagina	Larger and shorter than penis length	Smaller and shorter than half of penis length	Long slender and longer than half of penis length	Smaller and shorter than penis length

All previously described species of *Cryptosemelus* show no epiphallic caecum, flagellum, and dart apparatus. Shell lobes coloration, appearance of the penial caecum, shape and surface sculpture of the epiphallus, and radula morphology are considered as taxonomically informative and these can be used to distinguish the new species from all recognized *Cryptosemelus* species.

We have improved the key to the genera of mainland Southeast Asian slug-like semislugs provided by Tumpeesuwan and Tumpeesuwan (2019b) for identifying slug-like semislugs in mainland Southeast Asia and provide a key to species of genus *Cryptosemelus* below.

**Key to genera of mainland Southeast Asian slug-like semislugs**

- 1 Finger nail or triangular-shaped shell, always covered by shell lobes ..... **2**
- Ear-shape, subglobose, or globose-shaped shell, frequently covered by shell lobe..... **3**
- 2 Finger nail-shaped shell; gametolytic sac long, cylindrical tube ..... *Muangnua*
- Triangular-shaped shell; gametolytic sac stalk, short and stout or moderately long and slender..... *Laocaia*

- 3 Ear-shape shell; caudal horn present; dart apparatus and flagellum present .....4  
 – Subglobose; or globose-shaped shell; caudal horn absent; dart apparatus and flagellum absent or no information .....5  
 4 Penis length shorter than half of dart apparatus length..... *Parmarion*  
 – Penis length longer than dart apparatus length..... *Apoparmarion*  
 5 Left shell lobe present only; dart apparatus no information..... *Paraparmarion*  
 – Both shell lobes present, dart apparatus absent..... *Cryptosemelus*

### Key to species of genus *Cryptosemelus*

- 1 Shell lobes monochrome ..... 2  
 – Shell lobes with black reticulated stripes on pale colour ..... 3  
 2 Shell globose; body blue-gray; penial caecum absent; vagina large cylindrical.....  
 ..... *C. gracilis*  
 – Shell depressed subglobose; body grayish, penial caecum present; vagina cylindrical..... *C. betarmon*  
 3 Body color brownish; vagina long slender; penial caecum present; distal part of epiphallus with prominently granulated surface ..... *C. tigrinus*  
 – Body color dark brown to blackish; vagina short; penial caecum absent; epiphallus with smooth surface ..... *C. niger* sp. nov.

Since 2007, an intensive survey on land snail diversity in limestone and non-limestone hills in northeastern Thailand has been continuously conducted and published (Tumpeesuwan 2007; Tumpeesuwan and Tumpeesuwan 2010a, 2010b; Srihata et al. 2010; Tanmuangpak et al. 2012; Jumlong et al. 2013 Tumpeesuwan et al 2014; Tanmuangpak 2016; Sasang 2019; Nahok 2020). In total, 16 species have been described as new to science, comprising 11 species from limestone hills, four species from sandstone hills, and one species from volcanic hills (Tumpeesuwan and Tumpeesuwan 2014, 2017, 2019a, 2019b; Tanmuangpak et al. 2015, 2017; Nahok et al. 2020, 2021a, 2021b; Deeprom et al. 2022; Tanmuangpak and Dumrongrojwattana 2022; Tongkerd et al. 2023). Future studies on the malacofauna of the northeastern part of Thailand require more surveys in overlooked and isolated natural areas.

### Acknowledgements

This research project was financially supported by Thailand Science Research and Innovation (TSRI). We would like to thank Mr. Sophon Thip-Apakul and all the staff from Phu Pha Lom Forest Park, Loei Province, for their help when conducting our fieldwork in 2012–2013. We are deeply indebted to Nual-anong Wichaikul when she worked at the SEM laboratory, Faculty of Science, Mahasarakham University, for their help with sample processing and SEM work. We are very grateful to everybody who assisted with the land snail collection. Special thanks to Jolyon Dodgson for kindly

checking the manuscript. We thank Edmund Gittenberger, Junn Kitt Foon, and Menno Schilthuizen for their valuable comments and suggestions. Animal Care and Use Protocol Review No. IACUC-MSU-17/2021.

## References

- Bank RA (2017) Classification of the Recent terrestrial Gastropoda of the World. Last update: July 16<sup>th</sup>, 2017.
- Blanford WT, Godwin-Austen HH (1908) The Fauna of British India, including Ceylon and Burma. Mollusca. Testacellidae and Zonitidae. Taylor and Francis, London, 311 pp. <https://doi.org/10.5962/bhl.title.13103>
- Chimsaeng N (2019) Reproductive system anatomy and radula morphology of some land snail genera *Dugella*, *Cryptaustenia* and *Aenigmatoconcha*. Bachelor degree Science's project. Mahasarakham University, Maha Sarakham, Thailand. [In Thai with English abstract]
- Collinge WE (1902) On the non-operculated land- and freshwater molluscs collected by the members of the "Skeat Expedition" in the Malay Peninsula, 1899–1900. The Journal of Malacology 9(3): 71–95. <https://doi.org/10.1111/j.1469-7998.1902.tb08186.x>
- Dedov I, Schnepat U, Vu MQ, Huy NQ (2019) A new semislug of the genus *Laocaia* (Gastropoda, Pulmonata, Helicarionidae) from Vietnam. ZooKeys 846: 19–30. <https://doi.org/10.3897/zookeys.846.34372>
- Deeprom K, Tumpeesuwan C, Tumpeesuwan S (2022) A new species of the genus *Quantula* Baker, 1941 (Eupulmonata: Dyakiidae) from the southern part of north-eastern Thailand. The Raffles Bulletin of Zoology 70: 519–533.
- Inkhavilay K, Sutcharit C, Bantaowong U, Chanabun R, Siriwit W, Srisonchai R, Pholyotha A, Jirapatrasilp P, Panha S (2019) Annotated checklist of the terrestrial molluscs from Laos (Mollusca, Gastropoda). ZooKeys 834: 1–166. <https://doi.org/10.3897/zookeys.834.28800>
- Jumlong P, Tumpeesuwan C, Tumpeesuwan S (2013) Species diversity and abundance of land snails in sandstone and volcanic hills in Surin. Burapha Science Journal 18(1): 67–81. [In Thai with English abstract]
- Nahok B (2020) Systematics and Taxonomy of Land Snails Genera *Aegista*, *Thaitropis*, *Landouria*, and *Pseudobuliminus* in Thailand. Unpublished PhD Thesis, Mahasarakham University. Maha Sarakham. Thailand.
- Nahok B, Tumpeesuwan S, Tumpeesuwan C (2020) *Anceyoconcha*, a replacement name for the preoccupied tree snail genus *Giardia* Ancey, 1907 (Pulmonata: Helicoidea: Camaenidae). The Raffles Bulletin of Zoology 68: 80–90.
- Nahok B, Tumpeesuwan C, Tumpeesuwan S (2021a) Two new species of genus *Anceyoconcha* S. Tumpeesuwan & C. Tumpeesuwan, in Nahok et al. 2020 (Gastropoda: Pulmonata: Camaenidae), from northeastern Thailand. Raffles Bulletin of Zoology 69: 555–569.
- Nahok B, Tumpeesuwan S, Tumpeesuwan C (2021b) Five new species of the land snail genus *Landouria* Godwin-Austen, 1918 (Gastropoda, Camaenidae) from northeastern Thailand, with note on genitalia and radula morphology of *Landouria diplogramma* (Möllendorff, 1902). European Journal of Taxonomy 767: 142–166. <https://doi.org/10.5852/ejt.2021.767.1495>

- Pholyotha A, Sucharit C, Tongkerd P, Panha S (2020) Integrative taxonomic revision of the land snail genus *Sarika* Godwin–Austen, 1907 in Thailand, with descriptions of nine new species (Eupulmonata, Ariophantidae). *ZooKeys* 976: 1–100. <https://doi.org/10.3897/zookeys.976.53859>
- Pholyotha A, Sucharit C, Panha S (2021a) Rediscovering the dancing semislug genus *Cryptosemelus* Colling, 1902 (Eupulmonata, Ariophantidae) from Thailand with description of two new species. *ZooKeys* 1076: 43–65. <https://doi.org/10.3897/zookeys.1076.75576>
- Pholyotha A, Sucharit C, Tongkerd P, Panha S (2021b) Systematic revision of the limestone karst-restricted land snail genus *Aenigmatoconcha* (Eupulmonata: Helicarionidae), with description of a new species. *European Journal of Taxonomy* 767: 55–82. <https://doi.org/10.5852/ejt.2021.767.1487>
- Sasang C (2019) Species diversity and abundance of land snails in Si SaKet Province. Unpublished Master Thesis, Mahasarakham University, Maha Sarakham, Thailand. [In Thai with English abstract]
- Shileyko AA (2002) Treatise on recent terrestrial pulmonate mollusks. Part 9. Helicarionidae, Gymnariionidae, Rhysotinidae, Ariophantidae. *Ruthenica*. Supplement 2(10): 1167–1307.
- Shileyko AA (2003) Treatise on recent terrestrial pulmonate mollusks. Part 10. Ariophantidae, Ostracolethidae, Ryssotidae, Milacidae, Dyakiidae, Staffordiidae, Gastrodontidae, Zonitidae, Daudebardiidae, Parmacellidae. *Ruthenica* (Supplement 2): 1309–1466.
- Solem A (1966) Some non-marine mollusks from Thailand, with notes on classification of the Helicarionidae. *Spolia Zoologica. Musei Hauniensis* 24: 103–114.
- Srihata S, Tumpeesuwan C, Tumpeesuwan S (2010) Species diversity, abundance, and habitats of land snails in a square kilometer on Phu No, Kalasin Province. *Journal of Science and Technology MSU* 29(4): 359–371. [In Thai with English abstract]
- Tanmuangpak K (2016) Species diversity, abundance, distribution and habitat relationship of land snail in Phu Pha Lom limestone area, Loei Province. Unpublished PhD Thesis, Mahasarakham University, Maha Sarakham, Thailand.
- Tanmuangpak K, Dumrongrojwattana P (2022) *Gyliotrachela cultura*, a new species of terrestrial microsnail (Gastropoda: Eupulmonata: Vertiginidae) from Thailand. *Raffles Bulletin of Zoology* 70: 407–416.
- Tanmuangpak K, Tumpeesuwan C, Tumpeesuwan S (2012) Diversity of Land Snails in Phu Pha Lom Forest Park at Muang District, Loei Province. *Journal of Science and Technology Mahasarakham University* 8(Special Issue): 15–26. [In Thai with English abstract]
- Tanmuangpak K, Dumrongrojwattana P, Tumpeesuwan C, Tumpeesuwan S (2015) *Sinoennea loeiensis*, a new species of diapherid microsnail (Pulmonata: Streptaxoidea: Diapheridae) from Phu Pha Lom Limestone Hill, Loei Province, Northeastern Thailand. *The Raffles Bulletin of Zoology* 63: 293–300.
- Tanmuangpak K, Tumpeesuwan C, Tumpeesuwan S (2017) A new species of *Sesara* Albers, 1860 from northeastern Thailand (Stylommatophora: Helicarionidae) A new species of *Sesara* Albers, 1860 from northeastern Thailand Stylommatophora Helicarionidae). *Molluscan Research* 37(1): 1–7. <https://doi.org/10.1080/13235818.2016.1155431>
- Thiele J (1931) [1929–1935] *Handbuch der systematischen Weichtierkunde*. Erster Band, Teil 2, Gastropoda: Ophisthobranchia and Pulmonata. [English translation: Bieler and Mikkelsen (1992–1998)]

- Tongkerd P, Tumpeesuwan S, Inkhavilay K, Prasankok P, Jeratthitikul E, Panha S, Sutcharit C (2023) Systematic revision of the snorkel snail genus *Rhiostoma* Benson, 1860 (Gastropoda, Caenogastropoda, Cyclophoridae) with descriptions of new species. *ZooKeys* 1142: 1–144. <https://doi.org/10.3897/zookeys.1142.90097>
- Tumpeesuwan C (2007) Species diversity distribution and habitat relationship of terrestrial snails on the Phu Phan Range of Northeastern Thailand. Unpublished Ph D Thesis, Chulalongkorn University, Bangkok, Thailand.
- Tumpeesuwan C, Tumpeesuwan S (2010a) Species diversity and abundance of land snails in Phu Thok Noi, Nong kai Province. *Journal of Science and Technology MSU* 29(3): 298–307. [In Thai with English abstract]
- Tumpeesuwan C, Tumpeesuwan S (2010b) Species diversity and abundance of land snails in Limestone Hills in Nong Bua Lamphu Province. *Burapha Science Journal* 15(2): 10–19. [In Thai with English abstract]
- Tumpeesuwan C, Tumpeesuwan S (2014) *Phuphania costata*, a new species of dyakiid snail (Pulmonata: Dyakiidae) from Phu Pha Lom limestone area, Loei Province, northeastern Thailand. *The Raffles Bulletin of Zoology* 62: 352–357.
- Tumpeesuwan C, Tumpeesuwan S (2017) Discovery of an overlooked Helicarionid land snail (Helicarionidae: Durgellinae) from northeastern Thailand, with description of a new genus and new species, and a note on radula morphology and genital system. *The Raffles Bulletin of Zoology* 65: 174–181.
- Tumpeesuwan C, Tumpeesuwan S (2019a) First verified record of the genus *Landouria* Godwin-Austen, 1918 from Thailand (Gastropoda: Stylommatophora: Camaenidae) with description of a new species. *The Raffles Bulletin of Zoology* 67: 298–305.
- Tumpeesuwan C, Tumpeesuwan S (2019b) *Muangnua arborea*, a new semislug (Gastropoda, Stylommatophora, Helicarionidae, Durgellinae) from Loei Province, northeastern Thailand. *ZooKeys* 894: 19–32. <https://doi.org/10.3897/zookeys.894.38327>
- Tumpeesuwan S, Tawinkarn N, Tumpeesuwan C (2014) Species diversity, abundance and habitat relationship of land snails in Phu Peng, Kalasin Province. In the 10<sup>th</sup> Mahasarakham University Research Conference. Mahasarakham University: 498–506 [In Thai with English abstract]
- Vaught KC (1989) A classification of the living Mollusca. American Malacologist, Inc., Melbourne, 189 pp.
- Wiktor A (2002) Terrestrial gastropods of the Province of Madang in Papua-New Guinea (Part II) – Two species of *Cryptaustenia* Cockerell, 1898 (Pulmonata: Helicarionidae) new to the science. *Folia Malacologica* 10(4): 225–231. <https://doi.org/10.12657/folmal.010.014>
- Zilch A (1959) Gastropoda, Euthyneura. In: Schindewolf OH (Ed.) *Handbuch der Paläozoologie*, Band 6, Gastropoda. Gebrüder Borntraeger, Berlin, 400 pp.