

RESEARCH ARTICLE | AUGUST 03 2016

## Stabilizing the hexagonal close packed structure of hard spheres with polymers: Phase diagram, structure, and dynamics

John R. Edison; Tonnishtha Dasgupta; Marjolein Dijkstra



*J. Chem. Phys.* 145, 054902 (2016)

<https://doi.org/10.1063/1.4959972>



CrossMark

### Articles You May Be Interested In

Heterogeneous nanometer-scale Joule and Peltier effects in sub-25 nm thin phase change memory devices

*Journal of Applied Physics* (September 2014)

Accurate and precise determination of critical properties from Gibbs ensemble Monte Carlo simulations

*J. Chem. Phys.* (September 2015)

FCC-HCP coexistence in dense thermo-responsive microgel crystals

*J. Chem. Phys.* (June 2017)



**Time to get excited.**  
Lock-in Amplifiers – from DC to 8.5 GHz

[Find out more](#)

# Stabilizing the hexagonal close packed structure of hard spheres with polymers: Phase diagram, structure, and dynamics

John R. Edison,<sup>a)</sup> Tonnishtha Dasgupta, and Marjolein Dijkstra<sup>b)</sup>

*Soft Condensed Matter, Debye Institute for Nanomaterials Science, Department of Physics and Astronomy, Utrecht University, Princetonplein 5, 3584 CC Utrecht, The Netherlands*

(Received 2 May 2016; accepted 8 July 2016; published online 3 August 2016)

We study the phase behaviour of a binary mixture of colloidal hard spheres and freely jointed chains of beads using Monte Carlo simulations. Recently Panagiotopoulos and co-workers predicted [Nat. Commun. **5**, 4472 (2014)] that the hexagonal close packed (HCP) structure of hard spheres can be stabilized in such a mixture due to the interplay between polymer and the void structure in the crystal phase. Their predictions were based on estimates of the free-energy penalty for adding a single hard polymer chain in the HCP and the competing face centered cubic (FCC) phase. Here we calculate the phase diagram using free-energy calculations of the full binary mixture and find a broad fluid-solid coexistence region and a metastable gas-liquid coexistence region. For the colloid-monomer size ratio considered in this work, we find that the HCP phase is only stable in a small window at relatively high polymer reservoir packing fractions, where the coexisting HCP phase is nearly close packed. Additionally we investigate the structure and dynamic behaviour of these mixtures. *Published by AIP Publishing.* [<http://dx.doi.org/10.1063/1.4959972>]

## I. INTRODUCTION

Colloidal self-assembly is a promising and viable approach to fabricate new designer materials. Recent advancements in colloidal chemistry have enabled the synthesis of a wide variety of building blocks, with immense control over the size, shape, and functionality. This has opened the possibilities to fabricate via self-assembly, a vast variety of hierarchical structures. Very often the targeted structure cannot be accessed due to kinetic traps or due to competing crystal morphologies, which differ very little in free energy. It is the latter problem we deal with in this work. A well-known example of this problem is the crystallization of colloidal particles that are hard-sphere-like. It is well-established that the stable crystal structure of hard spheres is the face centered cubic (FCC) structure.<sup>1,2</sup> The hexagonal close packed (HCP) structure, which differs from the FCC structure only by the stacking order of the hexagonal planes of spheres costs an extra free energy of  $O(10^{-3})k_B T$  per particle at the melting density. This minute free-energy difference between the two competing structures results in crystallization of the hard-sphere fluid into a random hexagonal close packed (rHCP) phase of which the stacking sequence is random.<sup>3,4</sup> Binary mixtures of hard spheres with a diameter ratio of  $\approx 0.8$  show a similar behavior, where three different crystalline polymorphs, the so-called binary Laves phases  $MgCu_2$ ,  $MgZn_2$ , and  $MgNi_2$ , differ very little in free energy.<sup>5</sup> The  $MgCu_2$  structure can be used to fabricate photonic crystals with a bandgap in the visible region<sup>6</sup> and therefore a strategy to selectively stabilize this structure is of technological importance.

One approach to target a certain polymorph from its competing structures is to tune the interactions between the colloids in a suitable manner. Significant efforts have been undertaken in the last decade to devise strategies to tune colloidal interactions; some examples are the addition of polymer depletants<sup>7</sup> and tuning of the salt concentration in systems of charged colloids. Recently, Mahynski *et al.*<sup>8</sup> have shown via computer simulations that in a system of colloids which can exhibit more than one competing crystalline polymorph, addition of non-adsorbing polymers with a carefully chosen architecture can stabilize one polymorph over all the others. This observation has served as the motivation for our work in this paper. Using computer simulations, Mahynski *et al.* showed that the free-energy penalty incurred to add a freely jointed chain of hard beads to the FCC and HCP crystal of hard spheres, which are kept at the same packing fraction, differed significantly beyond a certain chain length of  $M$  beads. The polymers exhibited a clear preference to reside in the void space of one crystal polymorph over the other. Mahynski *et al.* attributed the observed preference, to the difference in distribution of void spaces between the two competing (FCC/HCP) polymorphs in the hard-sphere system.

While at a fixed colloid packing fraction both HCP and FCC structures possess the same amount of total void space, their distribution in space or connectivity, which places constraints on the possible conformations adopted by the polymer, is very different. Note that by void space we do not refer to vacancies on the crystal lattice, but just the free volume available to the polymer, which is as large as 26% in a close-packed hard-sphere crystal since the maximum colloid packing fraction is  $\eta_{cp} \approx 0.74$ . The shape of the voids in a hard-sphere crystal can be described by polyhedra. In both the FCC and the HCP structures, the void space consists of one octahedral void (OV) and two tetrahedral voids (TVs) per

<sup>a)</sup>Present address: Molecular Foundry, Lawrence Berkeley National Laboratory, 1 Cyclotron Road, Berkeley, California 94720, USA.

<sup>b)</sup>m.dijkstra@uu.nl

particle. The free volume of an OV, as given by the size of the largest inscribed sphere, is about 6 times larger than a TV. Furthermore, for both the FCC and HCP structures, the void arrangement is the same in the plane of the hexagonal layers, i.e., OVs only share faces with TVs. However, the crucial difference between FCC and HCP lies in the connectivity of the OVs and TVs in the direction perpendicular to the hexagonal layers. In the FCC lattice, each unit cell has a octahedral void (OV) in the middle capped by smaller tetrahedral voids (TVs), and hence the larger OVs in the FCC structure are all isolated from each other. On the other hand in the HCP structure, the OVs are stacked on top of each other and share faces, whereas TVs are likewise stacked and share either a face or a vertex in the direction perpendicular to the hexagonal planes.

Therefore a hard bead chain which requires more free space than provided by a single OV void, prefers the HCP structure where neighboring OV voids are easily accessible, as they are merely stacked on top of each other. In the FCC structure the same polymer chain has to incur a higher free-energy penalty as it has to find its way through a much narrower TV. Hence Mahynski *et al.* predicted that a system of colloids and polymer depletants should display a stable HCP crystal phase under certain conditions. In this work we affirm their predictions by computing the phase diagram of a binary mixture of hard spheres and freely jointed chains of hard beads as depletants.

This paper is organized as follows. In Section II we describe our model of a colloid-polymer mixture and the techniques we use to calculate the phase diagram. In Section III we present our results on the phase behavior and structure of the model. Finally we discuss the relevance of our studies to experimental studies on colloid-polymer mixtures and summarize our conclusions in Section IV.

## II. MODEL AND METHODS

We consider a binary mixture consisting of hard spheres with size  $\sigma_c$  and freely jointed hard bead chains. The chains, which model linear homopolymers, are composed of  $M$  monomer beads of size  $\sigma_m$ . The bond length between bonded monomers is constrained to a distance of  $\lambda\sigma_m$ . All non-bonded interactions of the system are assumed to be hard-sphere-like and set by the no-overlap condition,

$$U(r_{ij}) = \begin{cases} \infty & r_{ij} < \sigma_{ij} \\ 0 & \text{otherwise.} \end{cases} \quad (1)$$

Here  $r_{ij}$  and  $\sigma_{ij}$  denote the radial center-of-mass distance and mean diameter between a pair of spheres or beads,  $i$  and  $j$ . The bonded interactions between the beads read

$$U_{bond}(r_{ij}) = \begin{cases} \infty & r_{ij} < \sigma_m \\ 0 & \sigma_m \leq r_{ij} \leq \lambda\sigma_m \\ \infty & r_{ij} > \lambda\sigma_m. \end{cases} \quad (2)$$

In this work, we fix the diameter ratio of the beads and colloids to  $q = \sigma_m/\sigma_c = 1/7 \approx 0.143$ , and set  $\lambda = 1.1$  and the chain length to  $M = 14$  beads. Our methodology to compute the phase diagram directly follows the work of Dijkstra and Evans.<sup>9,10</sup> To compute the phase diagram it is convenient to study the system in the fixed  $\{N_c, z_p, V, T\}$  ensemble. Here  $N_c$  denotes the number of colloids,  $z_p = \exp[\beta\mu_p]/\Lambda_p^3$  is the fugacity of the hard bead chains,  $\mu_p$  the chemical potential of the bead chains,  $T$  is the temperature,  $\beta = 1/k_B T$ ,  $\Lambda_p$  the thermal wavelength of the polymer, and  $V$  is the volume. The exact free energy of the system in this ensemble  $F(N_c, z_p, V, T)$ , is given by the following identity:

$$\beta F(N_c, z_p, V) = \beta F(N_c, z_p = 0, V) + \int_0^{z_p} \left( \frac{\partial \beta F(N_c, z'_p, V)}{\partial z'_p} \right) dz'_p = \beta F(N_c, z_p = 0, V) - \int_0^{z_p} \frac{\langle N_p \rangle_{z'_p}}{z'_p} dz'_p. \quad (3)$$

The first term of the right hand side is just the Helmholtz free energy of a pure system of  $N_c$  colloidal hard spheres in volume  $V$ . We use the Carnahan-Starling free-energy expression for the fluid phase, while for the solid phase we use the Frenkel-Ladd method to obtain accurate estimates of the free energies of FCC and HCP crystal phases of system size  $N_c = 108$  spheres. The second term is the excess contribution that arises due to the presence of hard bead chains in the system, where  $\langle N_p \rangle$  is the average number of polymers present in a system with  $N_c$  colloids in equilibrium with a polymer reservoir fixed at fugacity  $z_p$ . The ‘‘adsorption’’ of polymer chains onto a system of  $N_c$  colloids in a volume  $V$  can be measured directly in a Monte Carlo simulation, where the polymer is treated grand canonically. Subsequently, we estimate the densities of the coexisting phases at a given  $z_p$  by performing common tangent construction on the resulting

$\beta F(\eta_c, z_p)/V$  vs  $\eta_c$  data. Here  $\eta_c$  is the colloid packing fraction. More details can be found in the Appendix of Ref. 10.

### A. Configurational bias Monte Carlo method

As stated in the previous paragraph, to compute the Helmholtz free energy  $\beta F(N_c, z_p, V)$ , we measure the ‘‘polymer adsorption’’  $\langle N_p \rangle$  onto a system of  $N_c$  colloids in volume  $V$  from a Monte Carlo simulation at fixed polymer fugacity  $z_p$ . In simulations of chain molecules the biggest bottleneck lies in generating trial configurations that are likely to be accepted. A vast majority of the trial configurations result in overlaps with other chain molecules or colloids. One strategy to overcome this issue is to bias the generation of trial configurations. The bias can then be accounted for by

modifying the Monte Carlo acceptance factors suitably. The configurational bias Monte Carlo (CBMC) method uses the Rosenbluth scheme to generate trial configurations. In this method, we grow the polymer chain bead by bead. In order to add a bead, we generate first a fixed number of trial positions, say  $k$ , and calculate the associated Boltzmann weight. We choose a certain trial position among the  $k$  options, with a probability proportional to its Boltzmann weight. In this way, we generate trial configurations that are more likely to be accepted. More details on the implementation of this method can be found in Refs. 11 and 12. We employ CBMC in our simulations to insert/delete/translate the polymer chains. A single sweep in our simulations consists of the following steps: (i) translation moves of all particles in the system; (ii) 2000 configurational bias moves which are equally split between polymer translation, insertion, and deletion.

The measurement of  $\langle N_p \rangle$  requires a simultaneous canonical averaging of the colloid (big species) configurations. At the chosen colloid-monomer size ratio  $q = 1/7$ , we find that the colloids sample the configuration space efficiently, with just single particle moves. At a few state points we have employed the rejection-free event-chain Monte Carlo<sup>13</sup>

algorithm, which helps the colloids to sample the configuration space more efficiently. The adsorption isotherms computed with and without the event chain moves are indiscernible. This indicates that the rate limiting steps for equilibration are the polymer addition/deletion moves.

## B. Transition matrix Monte Carlo method

To obtain an accurate estimate of the adsorption of polymer onto a system of  $N_c$  colloids in volume  $V$  as a function of fugacity  $z_p$ , we employ the Transition Matrix Monte Carlo (TMMC) method, developed by Fitzgerald and co-workers.<sup>14,15</sup> In a typical simulation at fixed  $\{N_c, z_p, V, T\}$ , the number of polymers  $N_p$  fluctuates around an equilibrium value. Using TMMC, we measure the probability of observing a certain number of polymers in the system  $P(N_p)$ . The technique involves performing the same simulation as mentioned above in Section II A together with a few bookkeeping steps.

After every insertion ( $N_p \rightarrow N_p + 1$ ) and deletion ( $N_p \rightarrow N_p - 1$ ) in a configurational bias Monte Carlo move for a polymer chain, we update a collection matrix  $C$  in the following fashion:

$$\begin{aligned} C(N_p \rightarrow N_p + \delta N_p) &= C(N_p \rightarrow N_p + \delta N_p) + a(N_p \rightarrow N_p + \delta N_p) \\ C(N_p \rightarrow N_p) &= C(N_p \rightarrow N_p) + 1 - a(N_p \rightarrow N_p + \delta N_p). \end{aligned} \quad (4)$$

Here  $a$  is the configurational bias acceptance probability of the proposed move. Note that the collection matrix is updated regardless of the move being accepted or rejected. The dimension of the collection matrix is  $\{3, N_p^{max} + 1\}$ , where  $N_p^{max}$  is a chosen upper limit of the range we wish to sample. Since we attempt to add or remove a single chain in each configurational bias Monte Carlo move,  $\delta N_p$  is  $\pm 1$ . Periodically during the simulation we use the information obtained via bookkeeping to compute a biasing function  $\Phi(N_p)$ . To compute  $\Phi(N_p)$ , we estimate transition probabilities  $W(N_p \rightarrow N'_p)$  using the data in the collection matrix  $C$ ,

$$W(N_p \rightarrow N'_p) = \frac{C(N_p \rightarrow N'_p)}{\sum_{N''_p} C(N_p \rightarrow N''_p)}. \quad (5)$$

The summation runs over the three possible states of  $N'_p$ , which are  $N_p + 1$ ,  $N_p - 1$ , and  $N_p$ . The Monte Carlo detailed balance expression is then employed to estimate the probability distribution  $P(N_p)$ ,

$$P(N_p)W(N_p \rightarrow N'_p) = P(N'_p)W(N'_p \rightarrow N_p). \quad (6)$$

The biasing function is given by  $\Phi(N_p) = -\ln(P(N_p))$  and the proposed polymer addition or removal moves are then accepted or rejected based on a biased acceptance criterion,  $\min\{1, a \exp(\Phi(N_p + \delta N_p) - \Phi(N_p))\}$ . Note that the collection matrix  $C$  is always updated with the unbiased acceptance probabilities. The simulation continues until the biasing function (probability distribution) converges within a

preset tolerance. A more detailed description of this method can be found in the work of Errington.<sup>14,16</sup> The output from a TMMC simulation is the probability of observing a certain number of polymer  $N_p$  in the system at a fixed fugacity  $z_p$ . We use this information to estimate the probability distribution at any other value of fugacity  $z'_p$  using the histogram reweighting technique.<sup>17</sup> The average number of polymers  $\langle N_p \rangle$  at a fixed fugacity  $z'_p$ , is the first moment of the reweighted distribution  $P(N_p; z'_p)$ .

## III. RESULTS

### A. Polymer adsorption as a function of colloid packing fraction

As mentioned in Section II we fix the number of beads of the polymer chains at  $M = 14$ , and the ratio of the size of the monomer and colloid at  $q = \sigma_m/\sigma_c = 1/7 \approx 0.143$ . We choose these specific values of  $M$  and  $q$ , because previous studies showed that the free-energy penalty to insert such a polymer greatly favours the HCP structure at a sufficiently high colloid packing fraction  $\eta_c$ .<sup>8</sup> It is worth mentioning that the system studied here is composed of hard polymer chains and hard colloids, whereas in Ref. 8 soft repulsive (Weeks-Chandler-Andersen) potentials were employed to model colloid-colloid and colloid-polymer interactions. We choose to use hard interactions for two reasons: (1) the

Helmholtz free energy of pure hard spheres is well-known, and (2) hard interactions are computationally less expensive than soft repulsive interactions. However, we do not expect any qualitative difference in the phase behavior between the two models. We treat the polymer chains in the grand canonical ensemble, i.e., we fix the polymer fugacity  $z_p$ . We also fix the colloid packing fraction  $\eta_c$ . In simulations where the colloids are crystalline we fix the number of colloids as  $N_c = 108$ , and choose box-dimensions accordingly. For the fluid phase we fix the linear dimension of the cubic box as  $L = 30\sigma_m$  and choose  $N_c$ . We measure the average number of polymer chains  $\langle N_p \rangle$  as a function of polymer fugacity  $z_p$  for varying colloid packing fractions  $\eta_c$ .

In Fig. 1 we show the adsorption isotherms or the number of polymers adsorbed per octahedral void  $\langle N_p \rangle / N_{OV}$  as a function of the reservoir polymer packing fraction  $\eta_p^r$  at fixed colloid packing fraction  $\eta_c = 0.576$  and  $0.707$ . Here  $\eta_p^r$  is the packing fraction of a reservoir of pure polymers at fugacity  $z_p$ ,  $\langle N_p \rangle$  is the number of polymers adsorbed onto the system, and  $N_{OV}$  is the number of octahedral voids in the system. We determine this conversion by performing Monte Carlo simulations on a pure system of bead chains at fixed polymer fugacity  $z_p$  and measuring the corresponding polymer packing fraction. In Figure 1 we also show the statistical error bars for the adsorption isotherms of the HCP and FCC structure from five independent runs. For almost the entire range of  $\eta_p^r$ , the size of the error bars are smaller than the symbol size and are negligible. In Figure 1(b) we zoom into the region where the error bars are the largest. From the top panel of Figure 1(b) we can see that for  $\eta_c = 0.576$  the error bars become significant, for adsorption in the HCP structure for  $\eta_p^r > 0.125$ . However it should be noted that in this regime phase separation occurs in the simulation box, and therefore we do not use the data for computing free energies. For  $\eta_c = 0.707$  we find that the statistical errors are negligible for  $\eta_p^r < 0.25$  and increases to only a few percent at  $\eta_p^r \approx 0.27$ .

At colloid packing fraction  $\eta_c = 0.576$  (Fig. 1(a)) (top) we observe no significant difference in the adsorption isotherms of the FCC and HCP structures for  $\eta_p^r < 0.125$ . The different void distributions in the FCC and HCP structure do not result in a noticeable difference in the polymer adsorption. At this value of  $\eta_c$ , there appears to be plenty of space available for the polymers, and the colloids do not appear to constrain the

chain configurations. As noted in the previous paragraph at  $\eta_c = 0.576$ , phase separation was observed in the simulation box for values of  $\eta_p^r > 0.125$ . Hence, there is an upper bound in  $\eta_p^r$  for estimating the free energy  $F(N_c, z_p, V, T)$  at fixed  $\eta_c$ .

At colloid packing fraction  $\eta_c = 0.707$  (Fig. 1(a)) (bottom) the adsorption isotherms display two interesting features: (i) At  $\eta_p^r \approx 0.225$ , the polymer adsorption in the HCP structure is much higher than for the FCC structure. This can be explained by the fact that the size of the polymer as given by the radius of gyration exceeds the size of the octahedral hole, forcing the polymer to venture to neighbouring voids. Hence, the polymer is forced to explore the smaller tetrahedral voids in the case of the FCC structure, thereby incurring a significant free-energy penalty, while in the HCP structure, the chains reach into the larger octahedral voids. This is the reason why the polymer adsorption is significantly higher in the HCP than in the FCC phase at low  $\eta_p^r$ . (ii) Upon further increasing  $\eta_p^r$ , the polymer adsorption in the FCC structure becomes larger than in the HCP structure. This is because the polymer chains in the FCC structure are predominately compact, whereas they are stretched out in the HCP phase. This difference in polymer configurations can be appreciated from the typical configurations shown in Figs. 2(c)-2(e) and the supplementary material.<sup>18</sup> Consequently, at high  $\eta_p^r$  every octahedral void in the HCP structure is occupied by at least one (part of a) polymer chain. However in the FCC structure the OVs are either occupied by a single chain or left empty. Therefore it becomes easier to insert a chain in one of the empty OVs of the FCC structure, than in a partially filled OV in the HCP structure.

As mentioned earlier in Section II the average number of polymer chains  $\langle N_p \rangle / N_{OV}$  per octahedral void allows us to calculate the Helmholtz free energy  $F(N_c, z_p, V, T)$ . Our adsorption isotherms together with Eq. (3) clearly indicate that there is a region in the phase diagram of this binary mixture of hard spheres and hard polymer chains, where the stable crystal phase is the HCP phase; this is what we intend to establish with free-energy calculations in Sec. III B.

## B. Phase behaviour

Using the data as obtained from the adsorption isotherms,  $\langle N_p \rangle$  as a function of  $\eta_p^r$  or  $z_p$ , we calculate  $F(N_c, z_p, V)$  using

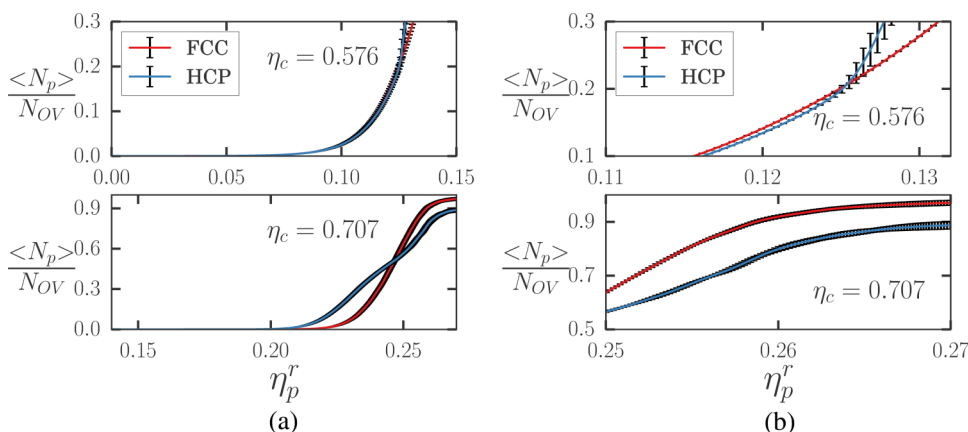


FIG. 1. (a) The average number of adsorbed polymer per octahedral void  $\langle N_p \rangle / N_{OV}$  in the HCP (blue) and FCC (red) polymorphs as a function of the polymer reservoir packing fraction  $\eta_p^r$  at two different colloid packing fractions  $\eta_c = 0.576$  (top) and  $\eta_c = 0.707$  (bottom). The  $\langle N_p \rangle / N_{OV}$  reported in this figure is the mean of  $\langle N_p \rangle / N_{OV}$  computed from five statistically independent runs. The size of the (black vertical) error bars is given by the root mean squared deviation of the five runs with respect to the mean. (b) Same as (a) with the scales of both axes changed to clearly view the error bars at high  $\eta_p^r$ .

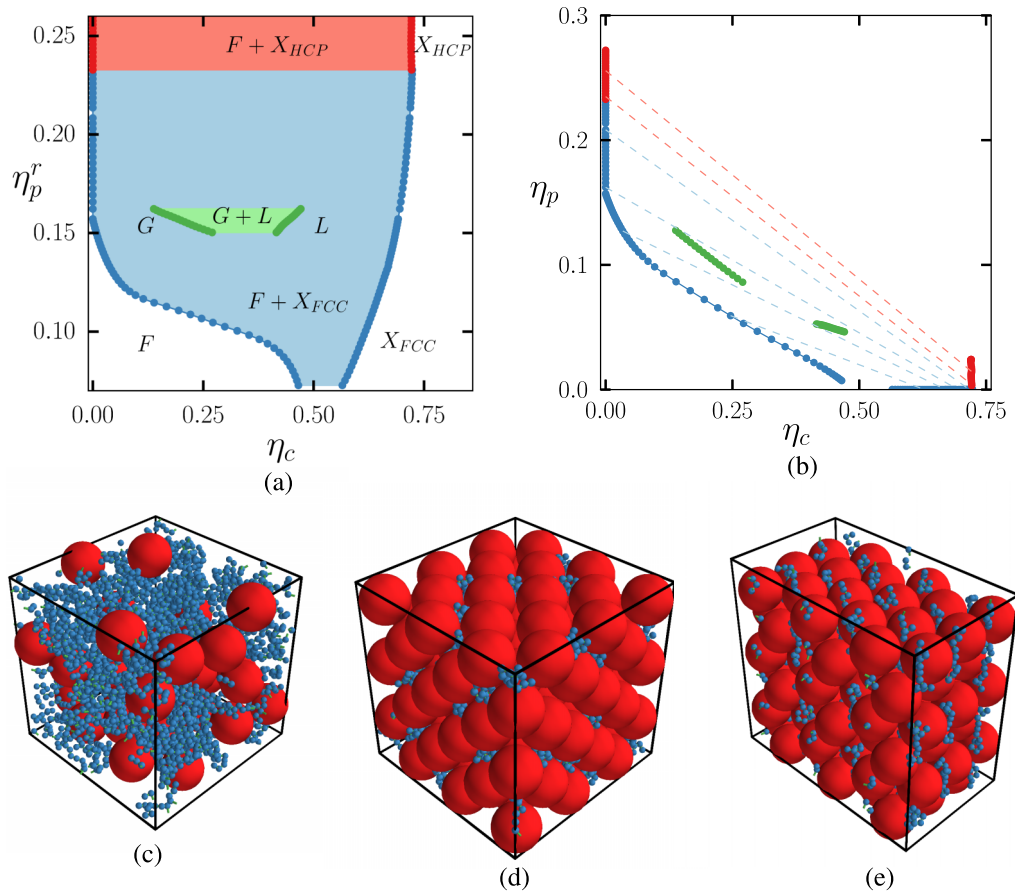


FIG. 2. (a) Phase diagram of a binary mixture of colloidal hard spheres and freely jointed polymer chains of  $M = 14$  beads and a size ratio  $q = 1/7$  in the polymer reservoir packing fraction  $\eta_p^r$  vs colloid packing fraction  $\eta_c$  representation. The blue symbols represent coexisting colloidal fluid (F) and colloidal crystal states ( $X_{FCC}$ ) with FCC ordering. The dark green symbols represent coexisting (metastable) colloidal gas (G) and liquid (L) states. The red symbols denote coexisting colloidal fluid and colloidal crystal states ( $X_{HCP}$ ) with HCP ordering. The pale blue, pale green, and pale red regions represent the two-phase coexistence regions  $F + X_{FCC}$ ,  $G + L$ , and  $F + X_{HCP}$ , respectively, as denoted by the labels. (b) Phase diagram in the  $\eta_p$  vs  $\eta_c$  representation. The tie-lines (dashed) connect the coexisting phases. Typical configurations of the colloid-polymer mixture representative of (c) fluid phase  $N_c = 30$ ,  $\eta_c = 0.20$ ,  $\eta_p^r = 0.096$ , (d) crystal phase with FCC ordering  $N_c = 108$ ,  $\eta_c = 0.72$ ,  $\eta_p^r = 0.254$ , and (e) crystal phase with HCP ordering  $N_c = 108$ ,  $\eta_c = 0.72$ ,  $\eta_p^r = 0.254$ .

Eq. (3) for the colloidal fluid phase, and the HCP/FCC crystal phases. We employ common tangent constructions at fixed  $z_p$  to determine the phase boundaries. In Fig. 2(a) we plot the phase diagram of the colloid-polymer mixture in the colloid packing fraction  $\eta_c$  vs polymer reservoir packing fraction  $\eta_p^r$  representation. In this representation tie lines that connect the two coexisting phases are horizontal. At  $\eta_p^r = 0$ , the coexisting densities are simply given by the fluid-solid transition of pure hard spheres. Upon increasing  $\eta_p^r$  ( $\mu_p$ ), an enormous broadening of the fluid-solid transition is observed. Moreover, we also find a metastable gas-liquid (G-L) phase coexistence. This metastable G-L phase coexistence terminates in a critical point, but we have not been able to accurately locate the critical point due to its metastability.

It is worthwhile to compare the phase diagram as shown in Fig. 2(a) with the phase diagram of a binary hard-sphere mixture with the same size ratio  $q = 1/7$ . In Ref. 10, phase diagrams are reported for size ratios  $q = 1/10$  and  $q = 1/5$ . We observe that the topology of the phase diagram shows a striking resemblance with the phase diagrams for binary hard-sphere mixtures, i.e., both phase diagrams show a metastable gas-liquid transition and an enormous widening of the fluid-solid transition at a remarkably similar polymer reservoir

packing fraction, see Figs. 14(a) and 14(b) of Ref. 10. This latter finding is particularly striking as the reservoir packing fraction at which the widening of the fluid-solid transition occurs is similar for both the single-sphere depletant and the polymer depletant, with chain connectivity playing no role. In Fig. 2(b) we replot the phase diagram in the  $\eta_p$  vs  $\eta_c$  representation with  $\eta_p$  the actual polymer packing fraction in the coexisting phases. We also show tie lines in Fig. 2(b) as denoted by the slanted dashed lines that connect the two coexisting phases.

In the limit  $\eta_p^r = 0$ , i.e., pure hard spheres, the stable crystal phase is the FCC phase. As can be seen from Figs. 2(b) and 3(b) the amount of polymer in the coexisting crystal phase is negligible up to about  $\eta_p^r \approx 0.225$ , and therefore the FCC structure is stable for values of  $\eta_p^r < 0.225$ . Upon increasing  $\eta_p^r$  further, the FCC crystal phase becomes metastable with respect to the HCP phase for  $\eta_p^r > 0.225$ . Hence, a two-phase coexistence region between a fluid and an HCP crystal appears in the phase diagram as denoted by the red region in Figs. 2(a) and 2(b).

In Figs. 2(c)-2(e) we show typical configurations of the fluid phase, the metastable FCC crystal phase, and the stable HCP crystal phase. It is interesting to note that Fig. 2(d) shows

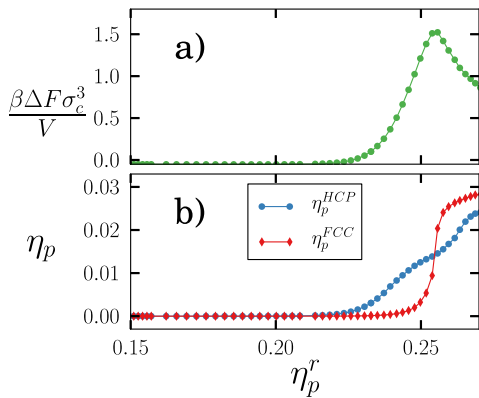


FIG. 3. (a) Free-energy difference between the FCC and HCP crystal structure that are in coexistence with the fluid phase,  $\beta(F_{FCC}^{c,c} - F_{HCP}^{c,c})\sigma_c^3/V$ , as a function of the polymer reservoir packing fraction  $\eta_p^r$ . (b) The polymer packing fraction in the FCC (red symbols) and HCP (blue symbols) crystal phases (blue symbols) that are in coexistence with the fluid phase vs the polymer reservoir packing fraction  $\eta_p^r$ .

clearly that the polymer chains in the octahedral voids of the FCC crystal are compact, whereas they are stretched in the HCP phase thereby occupying more than one octahedral void.

The top panel in Fig. 3 shows the difference in free energy between the FCC and HCP crystal phases that are in coexistence with a colloidal fluid phase as a function of the packing fraction of the polymer  $\eta_p^r$  in the bulk reservoir. It is clear that for  $\eta_p^r > 0.225$ , the HCP structure is the stable phase, with a free-energy difference becoming more than  $1 k_B T$  per particle. Upon further increasing  $\eta_p^r$ , the free-energy difference begins to fall. The difference in free energy between the colloid-polymer FCC and HCP crystal structure is directly related to the difference in polymer adsorption as expected from Eq. (3). In Fig. 3 (lower panel) we plot the polymer packing fraction in both the HCP (stable/metastable) and FCC (stable/metastable) crystal phases that are in coexistence with the fluid phase. Both the lower panel in Fig. 3 and the data shown in Fig. 1 (bottom) demonstrate clearly that the polymer adsorption onto the FCC crystal wins over that of the HCP phase at large  $\eta_p^r$ . Based on a stronger polymer adsorption onto the FCC phase, and that the free-energy difference between FCC and HCP decreases at high polymer reservoir packing fractions (see Fig. 3(a)), it is tempting to speculate that the free-energy difference tends to zero for sufficiently high  $\eta_p^r$ , thereby stabilizing the FCC crystal structure again at very high  $\eta_p^r$ . As simulations are infeasible at high  $\eta_p^r$ , the stability of FCC versus HCP remains as mere speculation at  $\eta_p^r > 0.275$ .

### C. Structure and dynamics

Next we take a closer look at the structure of the polymers in the FCC and HCP polymorphs at a fixed value of the packing fraction of the colloids  $\eta_c = 0.722$ . Using event driven molecular dynamics simulations, we investigate the structure and dynamics of the polymers at fixed  $\{N_c, N_p, V, T\}$ . Note that at relatively high polymer adsorption the FCC structure is metastable, and should transform into the HCP structure in the long time limit. However the barrier associated with changing the stacking sequence of the hexagonal planes as

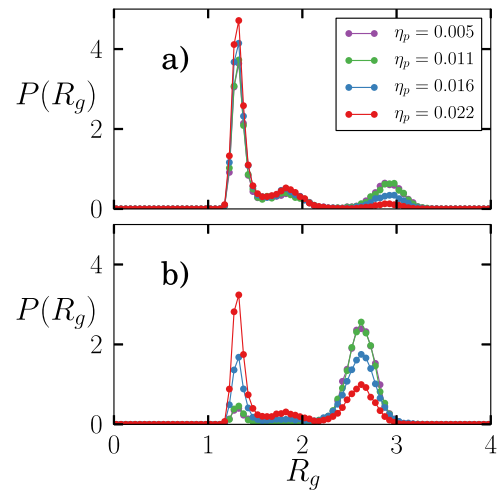


FIG. 4. Probability distribution of the radius of gyration  $P(R_g)$  of the polymer chains with length  $M = 14$  beads for varying polymer packing fraction ( $\eta_p$ ) as indicated in the legend in (a) the FCC structure and (b) the HCP structure. The packing fraction of the colloid is fixed at  $\eta_c = 0.722$ . The radius of gyration  $R_g$  is expressed in units of monomer size  $\sigma_m$ .

well as the fixed shape of the simulation box, allows us to simulate the metastable FCC phase without a spontaneous transformation to the HCP phase. In Fig. 4 we plot the probability distribution of the radius of gyration  $R_g$  (in units of monomer size  $\sigma_m$ ) of the polymer chains adsorbed onto the HCP and FCC polymorphs as a function of the polymer packing fraction  $\eta_p$ . From Figs. 2(d) and 4(a), it is evident that the polymers stay collapsed within the octahedral holes in the FCC polymorph. At low to intermediate polymer packing fractions  $\eta_p$ , the polymers diffuse to the neighbouring octahedral cavity in the FCC crystal phase. This diffusion process occurs via the polymers stretching into a tetrahedral cavity to be able to translocate from one octahedral cavity to another. These jumps are activated as they involve an entropic barrier associated with the entropic penalty the chains incur, as they stretch into a tetrahedral cavity before jumping into the neighbouring octahedral cavity. In Fig. 5 we show snapshots from an EDMD simulation which shows a polymer chain (shown in blue) performing an activated jump between two octahedral voids. It might be of interest to investigate the statistics of the translocation times of the hard bead chains between neighbouring cavities, which must be coupled to the vibrations of the colloidal crystal lattice.

In the HCP polymorph, the polymer chains are more stretched at low polymer packing fraction and as a consequence the polymers occupy more than one octahedral cavity. However, the polymers do not appear to be freely migrating in the columns formed by the octahedral cavities of the HCP structure. The probability distribution of the radius of gyration as shown in Figure 4 shows a single peak at  $R_g \approx 2.7$ . However upon increasing the polymer adsorption  $N_p/N_{OV} \geq 0.5$  or  $\eta_p \geq 0.016$ , effects of crowding set in. This is reflected in the probability distribution of the radius of gyration of the chains which becomes bimodal. The entropy of the system appears to be maximized by the cooperative action of the polymer chains. What happens at these loadings is that a few polymers are in the collapsed state, thereby letting the

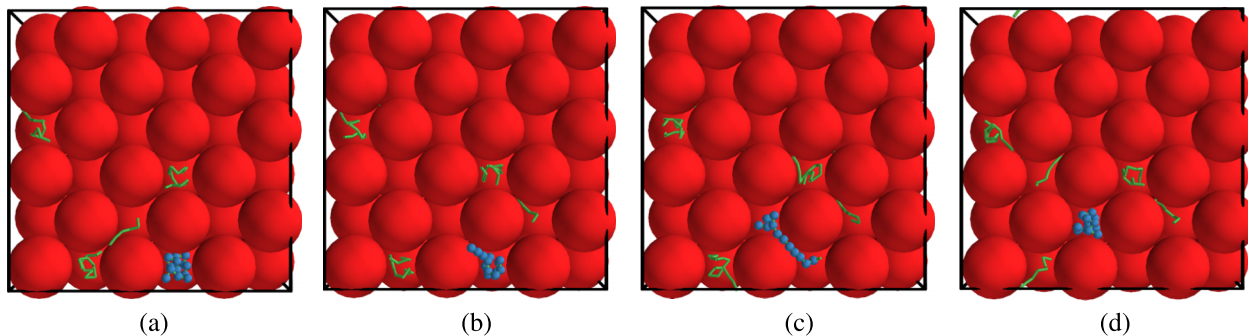


FIG. 5. Snapshots from an event driven molecular dynamics simulation which show the activated jump of a polymer chain of length  $M = 14$  (shown in blue) from one octahedral void to another in the FCC lattice. The packing fraction of the colloid is fixed at  $\eta_c = 0.722$ .

rest of the chains exist in a stretched state. In supplementary material S1 - S4,<sup>18</sup> we present animated visualizations of the polymers in the FCC and HCP crystal structure as obtained from our EDMD simulations.

#### IV. DISCUSSION AND CONCLUSIONS

In conclusion, we have investigated the phase behaviour of a binary mixture of colloid hard spheres with diameter  $\sigma_c$  and freely jointed bead chains consisting of hard spherical beads with diameter  $\sigma_m$ . We determined the phase diagram using free-energy calculations for a fixed monomer-colloid size ratio  $q = \sigma_m/\sigma_c = 1/7$  and a chain length of  $M = 14$  beads. We implemented the configurational bias Monte Carlo method to speed up equilibration of the polymer chains and the transition matrix Monte Carlo method to determine accurately the adsorption isotherms of the polymer. The phase diagram displays a broad fluid-solid two-phase coexistence region and a gas-liquid coexistence region, which is metastable with respect to the broad fluid-solid transition. We find that the FCC crystal structure is stable at low polymer reservoir packing fraction  $\eta_p^r$ , whereas the HCP structure becomes stable for  $\eta_p^r > 0.225$ . The trends observed in polymer adsorption in HCP/FCC structures lead us to speculate that the FCC structure may regain stability at very high values of the polymer reservoir packing fraction  $\eta_p^r$ . We also studied the structure and dynamics of the polymers in the crystal phase. In the FCC structure, the polymers stay collapsed in an octahedral cavity performing activated jumps to neighboring cavities. It is worth mentioning that a similar behavior was observed for an interstitial solid solution in a binary hard-sphere mixture with a size ratio of 0.3, which is constructed by filling the octahedral holes of an FCC crystal of large hard spheres with small spheres and where the fraction of octahedral holes filled with small spheres can be tuned from 0 to 1.<sup>19</sup> In these crystal structures, the small spheres also hop between neighbouring octahedral holes via a tetrahedral hole.<sup>19</sup> In the HCP structure, the polymers are in a stretched state at low polymer packing fraction and they display cooperative behavior at high polymer packing fraction, resulting in a bimodal distribution of collapsed and stretched polymer configurations.

It is worthwhile to explore the possibility to experimentally verify the theoretical predictions regarding the stability of the HCP structure over the FCC structure. Our simulation

study shows that for the system parameters that we considered, the HCP structure is stable with respect to the FCC phase for a polymer reservoir packing fraction  $0.225 < \eta_p^r < 0.275$ . The HCP phase, which is dense in colloids and dilute in polymer coexists with a fluid phase, which is very dilute in colloids and rich in polymers (see Fig. 2(b)). The packing fraction of the stable HCP crystal structure  $\eta_c \geq 0.72$ , almost approaches the close-packed density of  $\eta_{cp} \approx 0.74$ . Typical experimental samples of colloids are polydisperse in size. As noted by Pusey<sup>20</sup> for crystals with high packing fractions, the maximum allowed polydispersity  $\Delta$  is constrained by the expression  $\Delta \approx (\eta_{cp}/\eta_c)^{1/3} - 1$ . This empirical relation is based on the fact that the particles with sizes corresponding to the tails of the size distribution should still fit onto the crystal lattice without distorting the crystal structure. Using this constraint, we find that the size polydispersity  $\Delta$  should be less than 1% in order to achieve a colloidal crystal with a packing fraction  $\eta_c \approx 0.72$ , which is highly challenging, but not impossible. Another possible complication might be the size of the polymer as given by its radius of gyration that we considered in our model system, which is approximately on the same order of magnitude as the size of the colloids. Moreover, in a recent series of papers<sup>8,21,22</sup> Panagiotopoulos and co-workers have investigated how interactions between the polymers and the colloids impact the stability of the HCP structure over the FCC structure. The colloid-polymer interaction can be characterized by a reduced second virial coefficient  $B_2$ . They showed that for  $B_2 > 0$ , i.e., in the cases of hard repulsive interactions between the colloids and the polymers the HCP structure can be stabilized. As shown by the authors and described in our work, HCP is favored as its void space distribution is entropically more favorable to the polymers than FCC. The effect disappears for  $B_2 \approx 0$ . Interestingly for high negative values of  $B_2$ , i.e., for attractive colloid-polymer interactions the HCP becomes stable again. Here polymers like to stay collapsed in the small tetrahedral voids, and the presence of face sharing tetrahedral voids in the HCP structure leads it to being more stable than the FCC structure as chain length increases. Another recent work of Mahynski *et al.* shows that complex, open (non-closed packed) crystal morphologies can also be stabilized by suitably designing the architecture of the polymer.<sup>23</sup> In conclusion, it is evident that with a careful fine-tuning of the architecture of the polymer, it is possible to target a particular polymorph among



a set of competing structures. We hope that our findings will inspire new experimental studies in this direction.

## ACKNOWLEDGMENTS

J.R.E. and M.D. acknowledge financial support from a Nederlandse Organisatie voor Wetenschappelijk Onderzoek (NWO) VICI grant. J.R.E. and M.D. acknowledge a NWO-EW grant for computing time in the Dutch supercomputer Cartesius.

- <sup>1</sup>P. G. Bolhuis, D. Frenkel, S.-C. Mau, and D. A. Huse, *Nature* **388**, 235 (1997).
- <sup>2</sup>S.-C. Mau and D. A. Huse, *Phys. Rev. E* **59**, 4396 (1999).
- <sup>3</sup>P. N. Pusey, W. van Megen, P. Bartlett, B. J. Ackerson, J. G. Rarity, and S. M. Underwood, *Phys. Rev. Lett.* **63**, 2753 (1989).
- <sup>4</sup>J. Zhu, M. Li, R. Rogers, W. Meyer, R. Ottewill, W. Russel, P. Chaikin *et al.*, *Nature* **387**, 883 (1997).
- <sup>5</sup>A.-P. Hynninen, L. Fillion, and M. Dijkstra, *J. Chem. Phys.* **131**, 064902 (2009).
- <sup>6</sup>A.-P. Hynninen, J. H. Thijssen, E. C. Vermolen, M. Dijkstra, and A. Van Blaaderen, *Nat. Mater.* **6**, 202 (2007).
- <sup>7</sup>H. N. Lekkerkerker and R. Tuinier, *Colloids and the Depletion Interaction* (Springer, 2011), Vol. 833.
- <sup>8</sup>N. Mahynski, A. Panagiotopoulos, D. Meng, and S. Kumar, *Nat. Commun.* **5**, 4472 (2014).
- <sup>9</sup>M. Dijkstra, R. van Roij, and R. Evans, *Phys. Rev. Lett.* **82**, 117 (1999).
- <sup>10</sup>M. Dijkstra, R. van Roij, and R. Evans, *Phys. Rev. E* **59**, 5744 (1999).
- <sup>11</sup>B. Smit, *Mol. Phys.* **85**, 153 (1995).
- <sup>12</sup>D. Frenkel and B. Smit, *Understanding Molecular Simulation* (Elsevier, 2001).
- <sup>13</sup>E. P. Bernard, W. Krauth, and D. B. Wilson, *Phys. Rev. E* **80**, 056704 (2009).
- <sup>14</sup>J. R. Errington, *Phys. Rev. E* **67**, 012102 (2003).
- <sup>15</sup>M. Fitzgerald, R. R. Picard, and R. N. Silver, *EPL (Europhys. Lett.)* **46**, 282 (1999).
- <sup>16</sup>J. R. Errington, *J. Chem. Phys.* **118**, 9915 (2003).
- <sup>17</sup>A. Z. Panagiotopoulos, *J. Phys.: Condens. Matter* **12**, R25 (2000).
- <sup>18</sup>See supplementary material at <http://dx.doi.org/10.1063/1.4959972> for movies of polymers in the FCC and HCP crystal structure as obtained from our EDMD simulations.
- <sup>19</sup>L. Fillion, M. Hermes, R. Ni, E. Vermolen, A. Kuijk, C. Christova, J. Stiefelhagen, T. Vissers, A. van Blaaderen, and M. Dijkstra, *Phys. Rev. Lett.* **107**, 168302 (2011).
- <sup>20</sup>P. N. Pusey, *J. Phys. Fr.* **48**, 709 (1987).
- <sup>21</sup>N. A. Mahynski, S. K. Kumar, and A. Z. Panagiotopoulos, *Soft Matter* **11**, 280 (2015).
- <sup>22</sup>N. A. Mahynski, S. K. Kumar, and A. Z. Panagiotopoulos, *Soft matter* **11**, 5146 (2015).
- <sup>23</sup>N. A. Mahynski, L. Rovigatti, C. N. Likos, and A. Z. Panagiotopoulos, *ACS Nano* **10**, 5459 (2016).