

RESEARCH ARTICLE | FEBRUARY 18 2015

An early warning indicator for atmospheric blocking events using transfer operators

Alexis Tantet ; Fiona R. van der Burgt; Henk A. Dijkstra



Chaos 25, 036406 (2015)

<https://doi.org/10.1063/1.4908174>



View
Online



Export
Citation

CrossMark

Articles You May Be Interested In

Fixed points, stable manifolds, weather regimes, and their predictability

Chaos (October 2009)

On finite-size Lyapunov exponents in multiscale systems

Chaos (April 2012)

Extremes in dynamic-stochastic systems

Chaos (January 2017)

Chaos

Special Topic: Nonlinear Model Reduction From Equations and Data

Submit Today!

An early warning indicator for atmospheric blocking events using transfer operators

Alexis Tantet,^{a)} Fiona R. van der Burgt, and Henk A. Dijkstra

Department of Physics and Astronomy, Institute for Marine and Atmospheric Research Utrecht, Utrecht University, Utrecht, The Netherlands

(Received 31 October 2014; accepted 2 February 2015; published online 18 February 2015)

The existence of persistent midlatitude atmospheric flow regimes with time-scales larger than 5–10 days and indications of preferred transitions between them motivates to develop early warning indicators for such regime transitions. In this paper, we use a hemispheric barotropic model together with estimates of transfer operators on a reduced phase space to develop an early warning indicator of the zonal to blocked flow transition in this model. It is shown that the spectrum of the transfer operators can be used to study the slow dynamics of the flow as well as the non-Markovian character of the reduction. The slowest motions are thereby found to have time scales of three to six weeks and to be associated with meta-stable regimes (and their transitions) which can be detected as almost-invariant sets of the transfer operator. From the energy budget of the model, we are able to explain the meta-stability of the regimes and the existence of preferred transition paths. Even though the model is highly simplified, the skill of the early warning indicator is promising, suggesting that the transfer operator approach can be used in parallel to an operational deterministic model for stochastic prediction or to assess forecast uncertainty. © 2015 AIP Publishing LLC.

[<http://dx.doi.org/10.1063/1.4908174>]

The transfer operator of a model of the atmosphere is used to isolate and detect persistent atmospheric regimes and to define an early warning indicator of transitions between these regimes. The methodology is expected to have application potential to general dissipative chaotic systems.

I. INTRODUCTION

The midlatitude atmospheric flow is considered to be a chaotic dynamical system for which predictability is limited.^{1,2} Although the behavior of this flow is dominated by weather systems on short time scales caused by baroclinic instability, strong variability on time scales longer than 5–10 days, with a predominantly barotropic structure, is also observed.³ It has been argued that at least part of the observed low-frequency variability can be explained by recurrent and persistent atmospheric regimes^{4–6} such as the North Atlantic Oscillation (NAO) and blocking events.^{7,8}

Many studies identifying atmospheric regimes use algorithms relying on the recurrence property of these regimes such as the k-means^{4,9} and the Gaussian mixture algorithms.^{6,10} Other studies make use of persistence properties, for example, leading to Hidden Markov Models.^{11,12} Most of these techniques rely on the reduction of the high-dimensional phase space to a few dimensions.

The existence of weather regimes in General Circulation Models (GCM) and in reanalysis has been questioned for some time.^{13–15} Using the Integrated Forecast System (IFS) of the European Centre for Medium-Range Weather

Forecasts (ECMWF), it was shown^{16–18} that it was necessary to use a spatial resolution of T1279 (16 km), or to include stochastic parametrizations, in order for the atmospheric regime behavior to occur. This suggests that although the atmospheric regimes are large-scale low frequency motions, the faster small-scale motions (either explicitly resolved or included as random perturbations) are important to simulate them.

The barotropic structure of midlatitude low-frequency variability has motivated early studies using low-order barotropic models. Charney and DeVore¹⁹ have shown that such regimes could manifest themselves in highly truncated spectral barotropic models as stable fixed points representative of different solutions of a standing Rossby wave over topography. Flow regimes and spontaneous transitions have been observed in laboratory experiments using rotating annulus experiments for a barotropic fluid with topography²⁰ and for a two-layer shear flow.^{21–24} In Ref. 20, a zonal flow and blocked flow were found for different values of the Rossby number, and spontaneous transitions between the two were observed for intermediate values of the Rossby number. They suggested that these transitions were associated with the existence of two basins of attraction connected by heteroclinic orbits.

A scenario of chaotic itinerancy^{25,26} permitted by heteroclinic connections is supported by the study of Croomelin *et al.*²⁷ using a 6-mode barotropic model. For specific values of the forcing parameter, the two stable fixed points of the zonal and blocked regimes merge with a periodic orbit (due to barotropic instability), yielding a heteroclinic connection. Although such a specific situation is unlikely to exist in the real atmosphere, Croomelin²⁸ found evidence of ruins of such a heteroclinic connection in a hemispheric barotropic

^{a)}a.j.tantet@uu.nl

model with realistic topography and forcing,²⁹ manifested by the presence of preferred transition paths. Regime behavior was also found in more realistic barotropic^{28,30,31} and multi-layer quasi-geostrophic models.^{9,26} Because these models exhibit chaotic behavior, the regimes are no longer identified by stable fixed points but rather as neighborhoods in the phase space where trajectories tend to persist, motivating their denomination as meta-stable regimes.

In the laboratory experiments by Williams,²¹ it is the inertia-gravity waves which are responsible for the regime transitions when the flow is baroclinically unstable. Such waves and barotropic disturbances occur in the real atmosphere together with baroclinically unstable synoptic weather systems, so that it is not yet clear if one disturbance is more important than the other in inducing certain regime transitions. All these possible mechanisms suggest, however, that the variability of the midlatitude atmospheric circulation can be captured by a deterministic model with multiple basins of attraction “forced” by random perturbations representative of high-frequency eddies.

This multi-scale property of the climate system motivates a stochastic-modeling approach³² to climate variability.³³ Stochastic climate modeling often relies on a time-scale separation where the state vector is decomposed into a slow climate component and fast weather fluctuations. These fast fluctuations are not resolved explicitly but their aggregated effect is represented by a noise term. The system is thus modeled by a Stochastic Differential Equation (SDE)³² with in general non-linear deterministic terms and additive and/or state-dependent noise terms.^{34–37} When the time-scale separation assumption is violated, the Mori-Zwanzig formalism shows that a non-Markovian term representative of the memory effect induced by past interactions between the resolved and the unresolved variables has to be added.^{38–41} Stochastic modeling has been applied to many problems in climate science, such as subgrid-scale parametrization, uncertainty quantification, and data assimilation.^{37,42}

When randomness is present in a dynamical system, whether it is because of uncertainty in the initial state of chaotic systems or because of a stochastic forcing, it is of interest to study the evolution of probability densities in phase space by the flow rather than that of individual trajectories.^{43,44} This evolution is given by the transfer operator whose point spectrum, the Ruelle-Pollicott resonances,^{45–49} give valuable information on the slow dynamics of the system. For mixing dissipative systems, these resonances are associated with a slow correlation decay and the manifestation of meta-stability.⁴⁴

The main purpose of the present study is to develop an early warning indicator of transitions between atmospheric flow regimes. A traditional method that gives an early warning of a sudden transition is the use of the critical slow down of the system when it gets close to a bifurcation point.⁵⁰ However, in a high-dimensional model such as that used in Ref. 28, it is too simplistic to reduce the topology of the system to one or more stable fixed points. Recently, it was shown that complex networks can reveal information on nearby simple bifurcations in high-dimensional dynamical systems.⁵¹ Near bifurcation points, the topology of the

network changes drastically and early warning indicators for transitions were developed based on these topological changes.^{52–54}

In this study, we base the early warning indicator on the evolution of probability densities with respect to meta-stable regimes in a reduced phase space of the barotropic model used in Crommelin.²⁸ To study the slow dynamics in this phase space and to evaluate the effect of memory induced by the reduction, the spectrum of transfer operators estimated for different lags is analyzed. Meta-stable regimes are subsequently detected from the transfer operator at a carefully chosen lag. An early warning indicator of transition to the blocked regime is developed from the transfer operator making use of the existence of preferred transition paths between the regimes. To test the quality of the early warning indicator, a traditional method employing the Peirce skill score^{55–57} is used. Finally, a study of the energy budget of the barotropic model is performed, where particular attention is given to the conversion of mean kinetic energy to eddy kinetic energy by Reynolds’ stresses, to provide a physical background to the early warning indicator.

II. REDUCTION OF THE T21-BAROTROPIC MODEL

A. Model and data

Transitions between zonal and blocked regimes of the northern hemisphere atmospheric circulation are here investigated using a barotropic model.^{28,29,36} The dimensionless equation of the model, expressed in terms of the streamfunction ψ (representing the non-divergent flow) and using the mean radius of the Earth and the inverse of its rotation rate as horizontal and temporal scale, is given by the barotropic vorticity equation (BVE)

$$\frac{\partial \nabla^2 \psi}{\partial t} = -\mathcal{J}(\psi, \nabla^2 \psi + f + h_b) - k_1 \nabla^2 \psi + k_2 \nabla^8 \psi + \nabla^2 \psi^*, \quad (1)$$

where \mathcal{J} denotes the Jacobian operator, f the Coriolis parameter, h_b the scaled orography, k_1 the Ekman damping coefficient, k_2 the coefficient of scale-selective damping, and $\nabla^2 \psi^*$ the prescribed vorticity forcing. The non-dimensional orography h_b is related to the one of the real Northern Hemisphere h'_b by

$$h_b = 2A_0 \frac{h'_b}{H} \sin \phi_0, \quad (2)$$

where $\phi_0 = 45^\circ\text{N}$, $A_0 = 0.2$ is a factor determining the strength of the surface winds that blow across the topography, and H is a scale height of 10 km.

The BVE is projected onto spherical harmonics, triangularly truncated at the 21st mode (T21). The spherical harmonic coefficients are chosen such that the model is hemispheric with no flow across the equator, resulting in a system of 231 Ordinary Differential Equations (ODE), which are integrated using a fourth order Runge-Kutta numerical scheme. Following Ref. 29, the Ekman damping time scale and the scale-selective damping time scale were chosen as

15 days and 3 days (for wavenumber 21), respectively, so as to adequately reproduce the observed mean and variance of the 500 hPa Northern-Hemisphere 10-day mean relative vorticity. The vorticity forcing $\nabla^2\psi^*$ is calculated from ECMWF reanalysis data of wintertime 500 hPa relative vorticity from 1981 to 1991, in order for the first two moments of the simulated relative vorticity to be as close as possible to the observed relative vorticity. The term $\nabla^2\psi^*$ is calculated^{29,58} according to

$$\nabla^2\psi^* = \mathcal{J}(\psi_{cl}, \nabla^2\psi_{cl} + f + h_b) + k_1\nabla^2\psi_{cl} - k_2\nabla^8\psi_{cl} + \overline{\mathcal{J}(\psi', \nabla^2\psi')}, \quad (3)$$

where ψ_{cl} is the mean of the observed streamfunction. The quantity ψ' is the deviation of the 10-day running mean observed streamfunction from ψ_{cl} . The present study relies on a 500 000-day-long simulation using an integration time-step of 30 min, with daily output and a spin-up of 5000 days removed.

B. Phase-space reduction

In order to investigate the presence of meta-stable regimes and preferred transition paths, it is important to define a proper reduction of the 231-dimensional phase space. This is usually done by projecting the state vector on a low-dimensional basis of orthogonal vectors such that the variance of the projected state vector is maximized. In practice, this can be achieved by an Empirical Orthogonal Function [EOF, e.g., Ref. 59] analysis of the streamfunction normalized by the kinetic energy norm.^{28,36} The streamfunction patterns of the three leading EOFs are represented in Figure 1 and explain 36.7% of the total variance. The first EOF is related to the Arctic Oscillation (AO), blocking events, and the strength of the polar vortex.²⁸ As it shows a dipole-like pattern over the Atlantic basin, the third EOF has been associated with the NAO.

For the purpose of this study, special care must be given to the choice of the EOFs used to define the reduced phase space. Indeed, the presence of meta-stable regimes and the transitions between them should not be hidden by the projection. Furthermore, for the sake of time-scale separation between the motions in the reduced phase space and the unresolved ones, it is important for the principal components of the selected EOFs to show decorrelation times as large as possible compared to the other principal components. These decorrelation times, defined as the time scale after which the autocorrelation function has decayed to $1/e$ of its value at lag 0, are plotted in Figure 2 for the 20 leading principal components. Largest decorrelation times are found for principal components 1, 2, and 3 (41, 18, and 15 days, respectively), while other principal components have a decorrelation time shorter than 10 days (with many smaller than 5 days). Because Crommelin²⁸ has shown that meta-stability was mainly visible on the first principal component (pc_1), while transition between the meta-stable regimes occurred through low and high values of principal component pc_3 , we have chosen to define the reduced phase space Y as the (EOF_1, EOF_3) plane. The projection of the state vector $\mathbf{x} \in X$ on the reduced

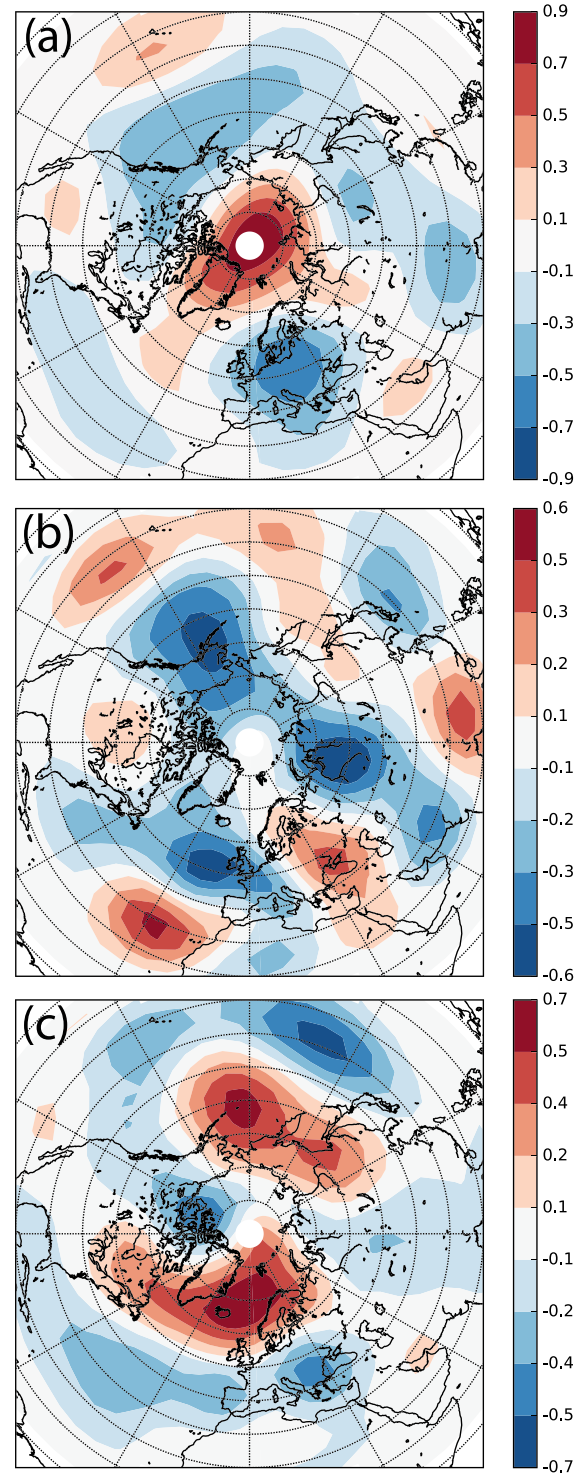


FIG. 1. Dimensionless streamfunction of the three leading EOFs of the barotropic model. EOF 1 (a), EOF 2 (b), and EOF 3 (c) that explain 21.4%, 8.5%, and 6.8% of the variance, respectively.

phase space Y is then given by the observable \mathbf{y} obtained by $h: \mathbf{x}_t \mapsto \mathbf{y}_t = (pc_1(t), pc_3(t))$.

The two-dimensional normalized histogram of pc_1 and pc_3 for the 500 000-day-long simulation is (cf. Figure 3) similar to Figure 7 in Ref. 28. To estimate the histogram, principal components pc_1 and pc_3 were normalized by their respective standard deviations and the (EOF_1, EOF_3) plane was discretized into a grid G of 50×50 boxes spanning a $[-3, 3] \times [-3,$

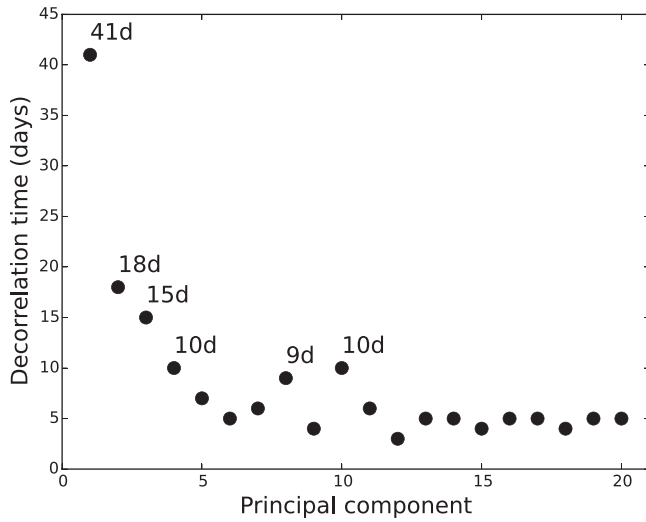


FIG. 2. Decorrelation times (in days) of the 20 leading principal components.

3] square. Grid boxes at the boundary are extended so that all realizations belong to the grid. Furthermore, if a box contains no realization, it is removed from the grid, as it is not likely to support part of the projection of the attractor. This resulted in a grid of $m = 1577$ boxes containing on average 314 realizations and such that 80% of the boxes contain at least 20 realizations. The components H_i of the normalized histogram H for grid-box B_i are then calculated as the likelihoods $\hat{\mathbb{P}}(y_t \in B_i) = \#\{y_t \in B_i\} / \#\{y_t \in G\}$, where $\#\{y_t \in B_i\}$ is the number of realizations of the observable y in box B_i and $\#\{y_t \in G\}$ is the total number of realizations.

The histogram in Figure 3 shows two local maxima indicative of the presence of recurrent or persistent regimes. These regimes will be precisely defined in Sec. IV C. For now, following Croumelin,²⁸ we associate the local maximum for negative pc_1 to the blocked regime (since it corresponds to high pressure over north-western Europe) and the maximum for positive values of pc_1 to the zonal regime. Croumelin²⁸ also showed that the transitions from the zonal

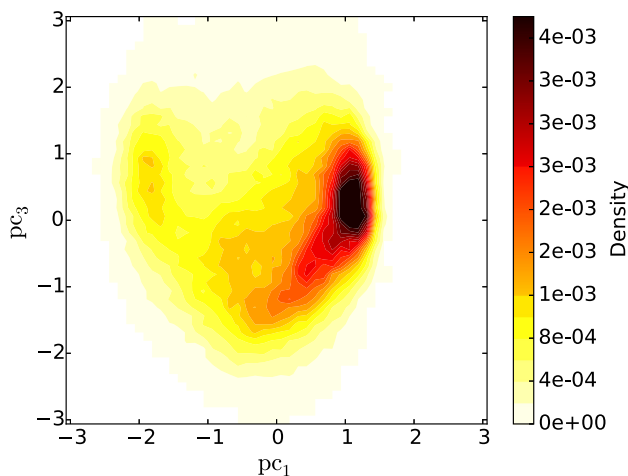


FIG. 3. Normalized histogram of the first and third leading principal components normalized by their respective standard deviations and discretized using 50×50 grid boxes.

to the blocked regime were preferably going through negative values of pc_3 , interpreted as the positive phase of the NAO.

The dynamics of the state vector \mathbf{x} of the barotropic model on the phase space X are deterministic and Markovian. However, application of the Mori-Zwanzig formalism^{38,39,41} indicates that in a closed model of the dynamics of observable y , memory terms accounting for past interactions between the resolved and the unresolved variables have to be included together with an, in general non-white, noise term. Under the assumption that the time scales of the resolved variables are slower by several orders of magnitude than those of the unresolved variables, these memory terms can be neglected.^{35,60} As can be seen in Figure 2, the decorrelation time of the unresolved variables pc_2 is not smaller than the one of the resolved variables pc_1 and pc_3 and hence time-scale separation does not apply and memory effects should be considered. In Secs. III and IV, we show how transfer operator techniques can provide detailed information on this issue.

III. TRANSFER OPERATORS, RESONANCES, AND THEIR ESTIMATION

The spectrum of transfer operators giving the evolution of densities induced by the flow can provide valuable information on the time scales of the dynamics; in this section, we show how these operators can be approximated on a reduced phase space.

A. Transfer operators of dissipative dynamical systems

We consider an autonomous dissipative dynamical system (DDS) governed by the ODE

$$\dot{\mathbf{x}} = F(\mathbf{x}), \quad \mathbf{x} \in X, \quad \mathbf{x}(0) = x_0, \quad (4)$$

where $X = \mathbb{R}^d$ is an Euclidean vector space and $F : X \rightarrow X$ a smooth vector field with associated flow $\{S_\tau\}_{\tau \geq 0}$. The evolution of a distribution f of \mathcal{D} (Ref. 61) induced by the flow $\{S_\tau\}$ is described by a family of linear operators $\{\mathcal{L}_\tau\}_{\tau \geq 0}$, namely, the *Perron-Frobenius operators* or *transfer operators*, such that

$$\langle \mathcal{L}_\tau f, g \rangle = \langle f, g \circ S_\tau \rangle, \quad \text{for all } g \in \mathcal{C}^\infty, \quad (5)$$

where \circ is the composition operator and $\langle f, g \rangle$ is the action of the distribution f on the smooth function g . The family $\{\mathcal{L}_\tau\}_{\tau \geq 0}$ is a *one-parameter semigroup*, that is,

$$\mathcal{L}_{\tau_1 + \tau_2} = \mathcal{L}_{\tau_1} \mathcal{L}_{\tau_2}; \quad \mathcal{L}_0 = I. \quad (6)$$

While the more intuitive transfer operators acting on (integrable) probability densities [Chap 7.4 in Ref. 43] will be considered in Secs. III B–V, it has been shown that the statistical properties, such as the decay rate of correlations, of several mixing dissipative systems are related to the point spectrum of transfer operators acting on (larger) spaces of distributions.^{48,62} Such statistics are provided by an ergodic invariant measure. A measure μ of a measurable space $(X, \mathcal{B}(X))$ is *invariant* under the flow S_τ if $\mu(S_\tau^{-1}(A)) = \mu(A)$

for all sets A in $\mathcal{B}(X)$. It is *ergodic* if all invariant sets A are trivial subsets of X ($\mu(A) = 0$ or $\mu(A) = 1$). Moreover, a dynamical system is *mixing* if $\lim_{t \rightarrow \infty} \mu(A \cap S_t^{-1}(B)) = \mu(A)\mu(B)$, in which case the *correlation function*

$$\rho_{f,g}(\tau) = \int fg \circ S_\tau - \int f \int g \quad \text{for } f \in L^1, g \in L^\infty, \quad (7)$$

converges to zero as the lag τ goes to infinity [Chap 4.4 in Ref. 43].

In the case of a DDS for which the attractor has Lebesgue measure zero, it is important to choose a *physical* invariant measure for which spatial and temporal averages of continuous observables are identical for an initial set of positive Lebesgue measure.^{63,64} It has been shown, for Anosov flows, that a physical measure of Sinai-Ruelle-Bowen (SRB) type⁶⁴ exists and that an appropriate Banach space \mathfrak{B} can be defined on which the semigroup of transfer operators is bounded and *strongly continuous* [Chap. 1.5, Ref. 65], with its point spectrum $P\sigma(\mathcal{L}_\tau)$ located inside the complex unit-disk.⁴⁸

Whether the system considered in this study is Anosov is a difficult question. However, it has been observed that many-particle systems with sensitive dependence to initial conditions “behave” as Anosov.⁶⁶ We will follow this so-called *chaotic hypothesis* and assume that the transfer operators $\{\mathcal{L}_\tau\}_{\tau \geq 0}$ associated with the flow $\{S_\tau\}_{\tau \geq 0}$ constitute a strongly continuous semigroup and that there exists a unique SRB measure (i.e., 1 is the only eigenvalue of the transfer operators located on the unit disk, the system is mixing).

For a bounded and strongly continuous semigroup, there exists an infinitesimal operator \mathcal{A} , namely, the *generator* of the semigroup, and $u(\tau) = \mathcal{L}_\tau f$ is the unique solution ($\forall \tau \geq 0$) of the following Cauchy problem [Chap. 2.6 in Ref. 65]:

$$\dot{u}(\tau) = \mathcal{A}u(\tau); u(0) = f. \quad (8)$$

For transfer operators, the linear system (8) is the *Liouville equation* which replaces the non-linear problem (4) at the expense of having to deal with a Partial Differential Equation (PDE).

The Spectral Mapping Theorem (SMT) [Chap. 4.3.7, Ref. 65] allows us to relate the point spectrum $P\sigma(\mathcal{A})$ of the generator of a strongly continuous semigroup to the point spectrum $P\sigma(\mathcal{L}_\tau)$ of the semigroup operators, according to

$$P\sigma(\mathcal{L}_\tau) \setminus \{0\} = e^{\tau P\sigma(\mathcal{A})}. \quad (9)$$

A vector ϕ is called an eigenvector associated with the eigenvalue λ in $P\sigma(\mathcal{L}_\tau)$ if $\mathcal{L}_\tau \phi = \lambda \phi$.

The SMT will be used in Sec. IV A to associate the spectrum of the transfer operators to motions of different time-scales. To fix the ideas, let us take an eigenvector ϕ (possibly a distribution) associated with a non-zero eigenvalue λ of $P\sigma(\mathcal{L}_\tau)$. For any observable g (a smooth test function)

$$\langle \phi, g \circ S_\tau \rangle = \langle \mathcal{L}_\tau \phi, g \rangle \quad (10)$$

$$= \lambda \langle \phi, g \rangle. \quad (11)$$

Applying the SMT, there exists an α in $P\sigma(\mathcal{A})$ such that $\lambda = e^{\tau \alpha}$, so that (11) becomes

$$\langle \phi, g \circ S_\tau \rangle = e^{\tau Re(\alpha)} e^{i\tau Im(\alpha)} \langle \phi, g \rangle. \quad (12)$$

Thus, the term $\langle \phi, g \circ S_\tau \rangle$ converges exponentially fast to zero at the rate $-Re(\alpha) > 0$. Loosely speaking, the point spectrum of the generator \mathcal{A} close to the imaginary axis (correspondingly, the point spectrum of \mathcal{L}_τ close to the unit circle) is responsible for a slow rate of decay of correlations in the direction of their eigenvectors. This point spectrum, called the *Ruelle-Pollicott (RP) resonances*,⁴⁵⁻⁴⁷ is therefore a candidate for a mathematical explanation of the observed low-frequency variability such as induced by meta-stability. This important fact motivates the estimation of the RP resonances to study the dynamics associated with meta-stable regimes in Sec. IV. In Secs. III B-IV, we present how these resonances can be calculated from approximations of the transfer operators on the reduced phase space.

B. Estimation of transfer operators on the reduced phase space

For Anosov systems, the stability of the SRB measure,^{67,68} the transfer operators,⁶⁹ and the dominant part of their spectra^{70,71} to perturbations, has motivated the discrete approximation of transfer operators using Ulam-type methods.^{49,68,69,72}

For low-dimensional systems, *Ulam's* method relies on a Galerkin approximation of the infinite-dimensional transfer operators by finite-dimensional matrices.^{68,73,74} For this purpose, the phase space is discretized into a grid $G = \{B_i\}_{1 \leq i \leq m}$ of m grid boxes defining an orthogonal basis of characteristic functions. The transfer operator \mathcal{L}_τ is then approximated by a time-homogenous Markov chain with transition matrix P_τ whose elements are the transition probabilities

$$(P_\tau)_{ij} = \mathbb{P}(x_{t+\tau} \in B_j | x_t \in B_i) \quad (13)$$

of a trajectory of \mathbf{x} in box B_i to pass through B_j after a lag τ . These probabilities can be estimated from a long time-series $\{x_t\}_{1 \leq t \leq N}$ of \mathbf{x} using the Maximum Likelihood Estimator (MLE)

$$(\hat{P}_\tau)_{ij} = \hat{\mathbb{P}}(x_{t+\tau} \in B_j | x_t \in B_i) = \frac{\#\{(x_t \in B_i) \wedge (x_{t+\tau} \in B_j)\}}{\#\{x_t \in B_i\}}, \quad (14)$$

where $\#\{x_t \in B_i\}$ is the total number of realizations of \mathbf{x} in B_i and $\#\{(x_t \in B_i) \wedge (x_{t+\tau} \in B_j)\}$ is the number of realizations of \mathbf{x} in box B_i ending in B_j τ -time later. As N goes to infinity, $(\hat{P}_\tau)_{ij}$ converges to $(P_\tau)_{ij}$ with an error of order $\mathcal{O}(N^{-1/2})$.⁷⁵

Because, the high dimensionality of the phase space of the barotropic model ($d = 231$) prohibits the direct approximation of \mathcal{L}_τ and because, as described in Sec. II B and in Crommelin,²⁸ the dynamics relevant to transitions between meta-stable regimes predominantly occur in the reduced phase space $Y = (\text{EOF}_1, \text{EOF}_3)$, we instead estimate the transition probabilities of a Markov process associated with the dynamics in the reduced phase space Y ,⁴⁹ by replacing \mathbf{x} in (13) and (14) by the observable $\mathbf{y} = h(\mathbf{x})$. Markov operators approximated by these transition probabilities cannot be expected to give the transfer of densities in the reduced phase space as induced by the flow S_τ . Nonetheless, it has

been shown by Chekroun *et al.* [Ref. 49, Theorem A], for systems with a unique SRB measure and a continuous observable h , that the transition probabilities in the full phase-space X , are related to the transition probabilities of the Markov process on the reduced phase-space Y by

$$\mathbb{P}(y_{t+\tau} \in B_j | y_t \in B_i) = \mathbb{P}(x_{t+\tau} \in h^{-1}(B_j) | x_t \in h^{-1}(B_i)). \quad (15)$$

Hence, the transition probabilities in X restricted to pairs $(h^{-1}(B_i), h^{-1}(B_j))$ are exactly the transition probabilities in Y for pairs (B_i, B_j) . As a consequence, the estimated transition matrices $\{\hat{P}_\tau\}$ contain information on the transfer operators $\{\mathcal{L}_\tau\}$ and their RP resonances as filtered by the observable.

Accordingly, we have discretized the reduced phase space Y using exactly the same 50×50 grid as for the histogram as in Sec. II B. Then, the matrices $\{\hat{P}_\tau\}$ were estimated from the 500 000-day-long time-series of \mathbf{y} and for different lags τ . Importantly, $\{\hat{P}_\tau\}_{\tau \geq 0}$ need not be a semigroup because (i) the partial observation of the system introduces memory effects,^{38,39} (ii) the Galerkin approximation adds numerical diffusion,⁷⁶ and (iii) the estimation of transition probabilities from a time-series of limited length is prone to sampling errors (cf. Sec. IV below).

Before to study in detail the spectral properties of the transition matrices, we remark that these matrices are row stochastic, implying that their eigenvalues satisfy $|\lambda| \leq 1$. In our case, there exists necessarily a unique eigenvalue equal to 1 because the transition matrices $\{\hat{P}_\tau\}$, by construction from a unique time series, represent irreducible Markov chains.⁷⁷ The uniqueness of this eigenvalue in turn implies that its associated eigenvector $\vec{\pi} = \{\pi_1, \dots, \pi_m\}$, or fixed point, is in fact identical to the normalized histogram H of Figure 3.

Indeed, the following calculation shows that the histogram H is invariant for any \hat{P}_τ :

$$\begin{aligned} (H\hat{P}_\tau)_j &= \sum_{k=1}^m H_k (\hat{P}_\tau)_{kj} \\ &= \sum_{k=1}^m \frac{\#\{y_t \in B_k\}}{\#\{y_t \in G\}} \times \frac{\#\{(y_t \in B_k) \wedge (y_{t+\tau} \in B_j)\}}{\#\{y_t \in B_k\}} \\ &= \sum_{k=1}^m \frac{\#\{(y_t \in B_k) \wedge (y_{t+\tau} \in B_j)\}}{\#\{y_t \in G\}} \\ &= \frac{\#\{y_{t+\tau} \in B_j\}}{\#\{y_t \in G\}} = H_j. \end{aligned}$$

Thus, each component π_i yields the likelihood $\hat{\mathbb{P}}(y_t \in B_i)$ for realizations of the observable to be in B_i . It is straightforward to associate to any m -dimensional vector on the grid G the corresponding density it approximates.⁷⁸ Not doing the distinction between a probability vector and the corresponding probability density should thus not lead to any confusion.

IV. SPECTRAL PROPERTIES, MEMORY AND ALMOST-INVARIANT SETS

A. Spectral properties and slow dynamics

We now apply the SMT in order to approximate the RP resonances (the dominant eigenvalues of the generator) from

the estimated transition matrices \hat{P}_τ , as filtered by the observable h . For this purpose, we first solve, for each estimated transition matrix in $\{\hat{P}_\tau\}$, the eigenvalue problem

$$\vec{e}_i(\tau)\hat{P}_\tau = \lambda_i(\tau)\vec{e}_i(\tau) \quad \text{for } i \in \{1, \dots, m\}, \quad (16)$$

where $\vec{e}_i(\tau)$ is the left-eigenvector associated with the i th eigenvalue $\lambda_i(\tau)$ of \hat{P}_τ . The spectrum of \hat{P}_τ changes with the lag τ . However, if $\{\hat{P}_\tau\}_{\tau \geq 0}$ was a semigroup with generator \mathcal{A}_m , the spectrum $\{\alpha_i\}$ of \mathcal{A}_m would be independent of τ and applying the SMT would give

$$r_i = -\text{Re}(\alpha_i) = -\frac{1}{\tau} \log |\lambda_i(\tau)| \quad \text{for } \tau > 0 \quad \text{and for } i \in \{1, \dots, m\}, \quad (17)$$

where r_i would be the exponential rate of decay of correlation of any observable in the reduced phase-space with the eigenvector associated with λ_i .

However, as noted in Sec. III B, the transition matrices $\{\hat{P}_\tau\}_{\tau \geq 0}$ do not necessarily inherit from the semigroup property (6) of the transfer operators $\{\mathcal{L}_\tau\}_{\tau \geq 0}$. Thus, no generator may exist and the rates r_i in (17) may depend on the lag τ . Nevertheless, calculating the rates $r_i(\tau)$ for each lag allows (i) to give an approximation of the dominant RP resonances with a control on the lag and (ii) to test the semigroup property (6).

For this purpose, we calculated the rates $r_i(\tau)$ by solving the eigenvalue problem (16) and applying (17) for τ ranging from 1 to 39 days. The leading rate equals 0, since it is associated to the unit-eigenvalue. The rates corresponding to the 10 leading eigenvalues different from unity of each \hat{P}_τ are represented in Figure 4 with the lag τ as abscissa and the (cyclic) coloring distinguishing the rank of the rate. A complex pair of conjugate eigenvalues is represented by one square for the two conjugates. The error bars represent 99% confidence intervals estimated from a thousand surrogate transition matrices by applying the bootstrap method described in Appendix A.

Our first observation concerns the small width of the confidence intervals (some are even hidden by the marker size). These intervals evaluate the robustness of the estimates to the limited length of the time-series. The largest intervals occur when two rates almost overlap, so that one of them may appear or disappear in the surrogates, resulting in a change of rank for all higher-rank rates. In our case, large confidence intervals are thus usually indicative of an uncertainty in the existence of two close but distinct rates or of only one (as for the leading rates at $\tau = 7$ or 8, for example). Moreover, Appendix A shows that at least the three leading rates are very robust to changes in the grid resolution, ranging from a 10×10 grid to a 100×100 grid, compared to the original 50×50 grid.

Being confident on the robustness of the rates to the sampling as well as to the grid resolution, we now turn to a detailed analysis of the results in Figure 4. First, we can see that the two rates closest to zero, the leading rates in red and green, are well separated from the rest of the spectrum after a lag between 5 and 10 days. One of these rates derives from

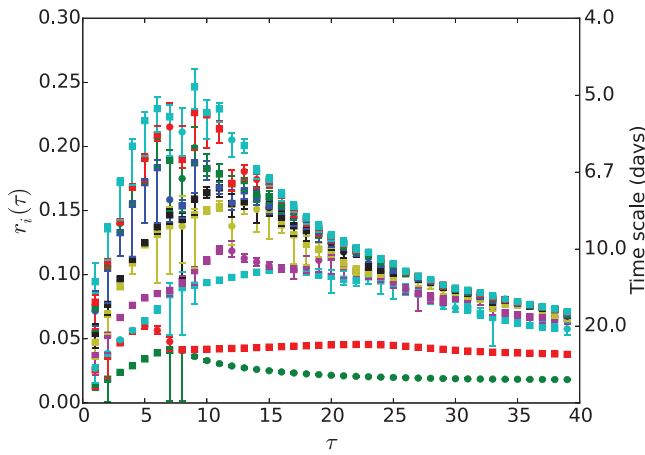


FIG. 4. Rates $r_i(\tau)$ corresponding to the 10 leading eigenvalues different from unity of each \hat{P}_τ , with the lag τ as abscissa and the (cyclic) coloring giving the rank of the rate. A complex pair of eigenvalues is represented by one square for the two conjugates. The error bars represent 99% confidence intervals estimated from a thousand surrogate transition matrices by applying the bootstrap method described in Appendix A.

a real eigenvalue (the circle), the other represents a pair of complex conjugate eigenvalues (the square); they exchange rank at a lag of 8 days. We can calculate an indicative time scale associated with each rate as the inverse of the rate. Whether this time scale corresponds, to a good approximation, to a decorrelation time is not the matter of this study. For a lag of 15 days, the first rate (in green) and the second rate (in red) correspond to a time scale of 40 and 23 days, respectively. Furthermore, the second rate is separated from the third (in cyan) by a gap of 13 days. This time-scale separation suggests that the reduced dynamics are slowly mixing due to the presence of meta-stable regimes responsible for low-frequency variability.^{49,79,80} This confirms the work on meta-stable atmospheric regimes in this model by Crommelin,²⁸ we will see in Sec. IV C how such regimes can be more objectively detected.

The second important feature, relevant to the problem of stochastic prediction of Sec. V B, is the relative constancy of the two leading rates for lags larger than 8 days. We can say, that the slow dynamics associated with these rates “behave as Markovian,” by which we mean that looking only at these rates, one cannot disprove the semigroup property (6), even though the dependence on the lag of the other rates is clearly indicative that $\{\hat{P}_\tau\}_{\tau>0}$ cannot constitute a semigroup. Thus, the two leading rates do not seem to be affected by memory effects due to the partial observation of the system or by estimate errors, since one would not expect them to be constant otherwise.

From the separation of the two leading rates from the other rates as well as their relative independence on the lag τ for lags larger than 8 days, we expect 8 days to be the minimum lag for which the transition matrix $\hat{P}_{\tau=8}$ is likely to predominantly resolve the dynamics associated with the meta-stable regimes. Consequently, the following developments will rely mostly on the transition matrix $\hat{P}_{\tau=8}$. Such strategy for the choice of the lag is similar to the one of DelSole⁸¹ and Berner,⁸² who look directly at the decorrelation rate of

their time series to infer for which lag they should estimate the drift and diffusion coefficients of the Fokker-Planck equation they want to approximate. In our case, however, all the rates associated with the dominant eigenvalues of the transfer operators are considered and not only the decorrelation rate of the time series alone. Let us also acknowledge that the SMT has been used in Crommelin and VandenEijnden⁸³ to estimate the spectrum of the generator associated with a Fokker-Planck equation, in Froyland *et al.*⁷⁶ to compare approximates of transfer operators and generators of low-dimensional dynamical systems and in Franzke *et al.*¹² to test the meta-stability of Hidden Markov Models. However, we do not know other studies using the SMT to test the “Markovianity” of reduced systems, even though the τ -test in Ref. 84 serves a similar purpose in the context of linear inverse modeling.

B. Further validation of the semigroup property

We further test to which extent the semigroup property (6) is violated for special cases of powers k of \hat{P}_τ and the corresponding matrices $\hat{P}_{k\times\tau}$. Rather than directly calculating a distance between the matrices $(\hat{P}_\tau)^k$ and $\hat{P}_{k\times\tau}$, we prefer to calculate, for an initial density f_0 , the distance between the density $f_{k\tau}^{\text{pow}} = f_0(\hat{P}_\tau)^k$ transferred by the k th power of \hat{P}_τ and the density $f_{k\tau}^{\text{long}} = f_0\hat{P}_{k\times\tau}$ transferred by $\hat{P}_{k\times\tau}$. We use the distance $d(f, g) = \sqrt{\sum_{i=1}^m \pi_i (f_i - g_i)^2}$, which is a sum of squared errors between the components of f and g , weighted by the likelihoods $\hat{\mathbb{P}}(y_i \in B_i)$, so that errors in grid boxes less likely to be reached by the Markov process are given less weight. The distances $d(f_{k\tau}^{\text{pow}}, f_{k\tau}^{\text{long}})$ have been calculated for a set of m initial densities associated with each grid-box in $\{B_i\}$, so that the density associated with box B_j integrates to 1 in B_j and to zero elsewhere. The distances are represented in Figures 5(a) and 5(b) for a lag τ of 8 days and for a multiplier k of 2 and 4, respectively (dark colors indicate small distance).

To explain the nature of the violation of the semigroup property (6), let us recall that there exist only three possible candidates, namely, (i) the partial observation of the dynamical system, (ii) the coarse-graining induced by the Galerkin approximation, and (iii) sampling errors. Furthermore, it is shown in Appendix B, that the distances plotted in Figure 5 are not affected by the use of twice as more samples and that they only decrease slightly when the resolution increases (and vice versa). Thus, we can say, that positive distances in Figure 5 are mostly the consequence of memory effects induced by the partial observation of the high-dimensional barotropic model.

We can observe that these memory effects are mostly important where the stationary density is small (Figure 3) and thus, where trajectories are less likely to pass by. The denser regions which are associated with meta-stability, as will be seen Sec. IV C, seem to be less affected by memory effects. This result is in agreement with the relative constancy with lag of the leading rates, also associated with meta-stability. Such memory effects, as well as the dependence on the lag of

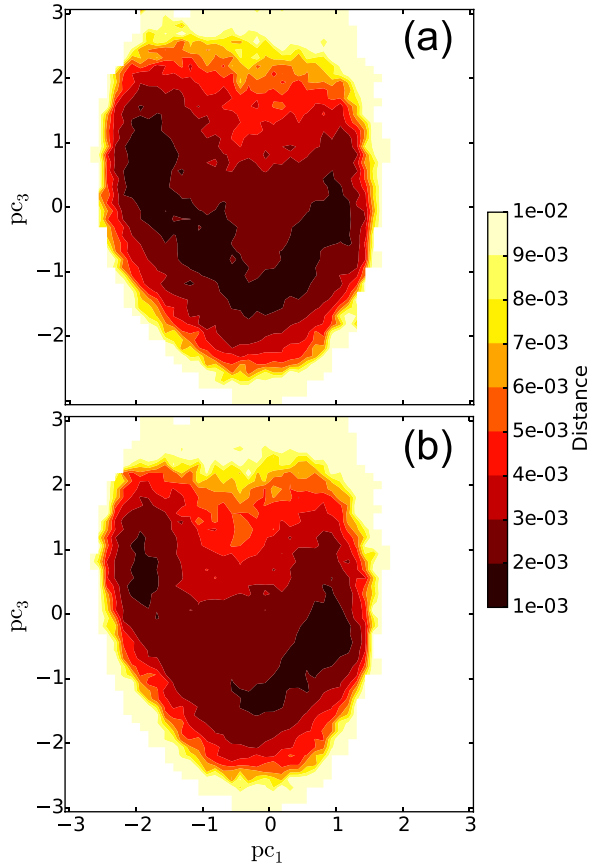


FIG. 5. The value at each grid-point represents the distance, for an initial density of 1 at this grid-point, between the density f_{8k}^{pow} transferred by the k th power of \hat{P}_8 and a density f_{8k}^{long} transferred by $\hat{P}_{k \times 8}$ for (a) $k=2$ and (b) $k=4$.

the spectral gap between the leading rates, should be put in perspective with stochastic modeling with SDE and based on time-scale separation.^{34,35,37} Indeed, in such models, one seeks a reduced basis for the decorrelation time of the resolved variables, in order to be able to neglect the memory effects made explicit by the Mori-Zwanzig formalism.^{38,39} If the transition matrices on the reduced phase space do not directly help in the choice of the basis on which the dynamical system can be optimally reduced, their rates can give insights on the impact of the reduction on the resolved variables.

C. Meta-stable regimes as almost-invariant sets of the transfer operator

We have seen, in Sec. IV B, that the two leading rates of Figure 4 are close to zero and that a large spectral gap separates them from the rest of the rates, a configuration indicative of the presence of meta-stable regimes. This characteristic of meta-stability or persistence allows to formally define these regimes as almost-invariant sets.^{79,80} We now give an extension of the definition of almost-invariant sets to sets in the reduced phase space and present an algorithm to detect them from a transition matrix \hat{P}_τ .

A set A of the phase space X is almost-invariant if $S_\tau^{-1}(A) \approx A$, so that

$$\mathbb{P}(x_{t+\tau} \in A | x_t \in A) \approx 1. \quad (18)$$

Reformulating, the probability for a trajectory starting in a set A to leave this set after a lag τ is almost-zero. These sets are thus associated with persistent or meta-stable regimes.

In the case of almost-invariant sets in the reduced phase space, we are interested in sets E of Y , almost-invariant with respect to the transition probabilities $\mathbb{P}(y_{t+\tau} \in E | y_t \in E)$, such that

$$\mathbb{P}(y_{t+\tau} \in E | y_t \in E) \approx 1. \quad (19)$$

However, applying (15) [Ref. 49, Theorem A] we have that

$$\begin{aligned} \mathbb{P}(y_{t+\tau} \in E | y_t \in E) &\approx 1 \\ \iff \mathbb{P}(x_{t+\tau} \in h^{-1}(E) | x_t \in h^{-1}(E)) &\approx 1. \end{aligned} \quad (20)$$

This important result states that if a set E is almost-invariant in the reduced space Y , its pre-image $h^{-1}(E)$ in X is almost-invariant to the flow S_τ . In other words, almost-invariant sets in the reduced phase space are images of almost-invariant, yet coarser, sets in the full phase space. Of course, these coarse-grained almost-invariant sets may not be optimal, in the sense that other, more strongly almost-invariant sets (with respect to (19)) may exist but are filtered out by the observable h in the same way RP resonances can be filtered out by h .

Based on these considerations, the transition matrix $\hat{P}_{\tau=8}$ was used to define the meta-stable regimes objectively. For the detection of almost-invariant sets [see also Refs. 78–80] we use an optimal Markov chain reduction^{85,86} with respect to the relative entropy rate.⁸⁷ This type of Markov chain reduction is particularly well suited for the detection of dense almost-invariant sets (highly recurrent), since it attempts to minimize the distance between a density transferred by the reduced transition matrix (giving the transition probabilities between the almost-invariants, see below) and the same density transferred by the original transition matrix. The optimization was implemented using the greedy algorithm from network theory,⁸⁸ where the grid-boxes are iteratively merged to give coarser and coarser almost-invariant sets.

In accordance with the bimodality of the histogram (Figure 3), we have chosen to look for a number of almost-invariant sets p of 2. These two sets are plotted in Figure 6, such that all grid boxes in green belong to the first almost-invariant set and all grid boxes in blue belong to the second one. For the family of almost-invariant sets $\{E_\beta\}$, the 2×2 reduced transition matrix $\hat{Q}_{\tau=8}$, such that $(\hat{Q}_{\tau=8})_{\beta\gamma} = \hat{\mathbb{P}}(y_{t+\tau} \in E_\gamma | y_t \in E_\beta)$, and its stationary density η , such that $\eta_\beta = \hat{\mathbb{P}}(y_t \in E_\beta)$, are found to be

$$\hat{Q}_{\tau=8} = \begin{pmatrix} 0.79 & 0.21 \\ 0.14 & 0.86 \end{pmatrix}, \quad \eta = \begin{pmatrix} 0.27 \\ 0.73 \end{pmatrix}, \quad (21)$$

the second almost-invariant set (in blue) being almost three times as dense as the first one (in green).

The algorithm is designed to find almost-invariant sets whose union covers the entire grid. However, in view of the early warning problem discussed in Sec. V, we need to find a restriction of the definition of the regimes $\{R_\beta\}$ to smaller

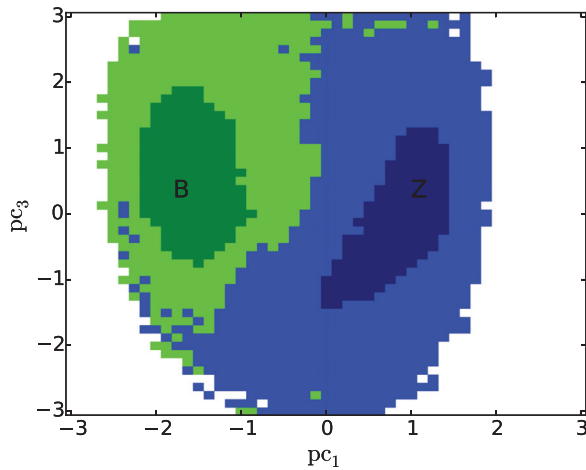


FIG. 6. Two almost-invariant sets and their restrictions (in dark colors) corresponding to the blocked and the zonal regime, respectively.

regions of the grid so that the likelihood $\hat{P}(y_t \in R_\beta)$ to be in any regime R_β becomes smaller than one.⁸⁹ To do so, we selected, for each almost-invariant set E_β , their grid-boxes B_i maximizing the likelihood $\hat{P}(y_t \in B_i, y_{t+\tau} \in E_\beta, y_{t-\tau} \in E_\beta)$ of a realization of \mathbf{y} to be in B_i and to come from and go to the same almost-invariant set E_β , until a sufficiently large number of boxes have been attributed to the regime R_β to have $\hat{P}(y_t \in R_\beta) = \hat{P}(y_t \in E_\beta)/2$ (until half of the almost-invariant set has been selected in terms of stationary density π). These restrictions are plotted in dark green and dark blue (Fig. 6) and define the blocked and zonal regimes, respectively. The probability to stay in the so-defined blocked and zonal regimes after 8 days is of 66% and 70%, respectively.

It is shown in the Appendixes A, B, and C that these regimes are relatively robust to the limited length of the time series, to the grid resolution, and to the lag, respectively. Their definition together with the transition matrices $\{\hat{P}_\tau\}$ is used in Sec. V to define an early warning indicator of a transition to the blocking regime.

V. PREFERRED TRANSITION PATHS AND EARLY WARNING

A. Preferred transition paths

Having defined the regimes, we now study the transitions between them. Following Branstator and Berner,⁹⁰ we first plot the mean tendencies of the normalized principal components pc_1 and pc_3 . The tendencies were calculated for each principal component using a finite difference scheme such that $\Delta pc_i(t) = (pc_i(t + \Delta t) - pc_i(t))/\Delta t$, where Δpc_i is the approximate tendency of the i th principal component and Δt is the time step. An estimate of the mean tendency for each grid box was then calculated by averaging over all the realizations of \mathbf{y} in this grid box.

The mean tendency for a time-step Δt of 8 days is plotted in Figure 7. It can be seen as a composition of a clockwise rotation and two sinks. This result corroborates both the meta-stability of the regimes and the existence of preferred transition paths between them, reminiscent of a pseudo-periodic orbit.^{7,28} Indeed, the rotation is such that typical

trajectories leaving the zonal regime (blocked regime) to go to the blocked regime (zonal regime) transit through negative values (positive values) of pc_3 . Furthermore, the correspondence between the sinks with low-values of mean tendency and the regimes is striking, in particular, for the zonal regime. We have seen in Sec. IV B that the memory effects are relatively weak in the region of the regimes. In the limit when these effects can be neglected, the reduced dynamics can be modeled by an SDE and the mean tendency gives an approximation of the drift term involved in the Fokker-Planck equation [together with diffusion, not calculated here^{32,82}] which generates the semigroup of transfer operators associated with the SDE. The correspondence between weak tendency and almost-invariance is thus not coincidental.

To further support the existence of preferred transition paths from one regime to the other, we have calculated, for each grid box, the likelihood $\hat{P}_{ZB}(\hat{P}_{BZ})$ that a trajectory starting in the zonal regime (blocked regime) and passing through this grid box reaches the blocked regime (zonal regime) before the zonal regime (blocked regime).

The resulting likelihoods are plotted in Figure 8. In agreement with the tendency, the trajectories going from the zonal to the blocked regime are more likely to do so through low values of the 3rd principal component; while trajectories going from the blocked to the zonal regime favor high values of the 3rd principal component.

B. Early warning indicator

The presence of preferred transition paths from the zonal to the blocked regime, as well as the weak mixing associated with the existence of rates close to zero (cf. Sec. IV A), suggests that there is potential skill in predictability of transitions to the blocked regime. Note that more than trying to predict when a trajectory will leave the zonal regime, we want to use the fact that trajectories leaving the zonal regime are more likely to go to the blocked regime if they transit through negative values of pc_3 . We therefore use the

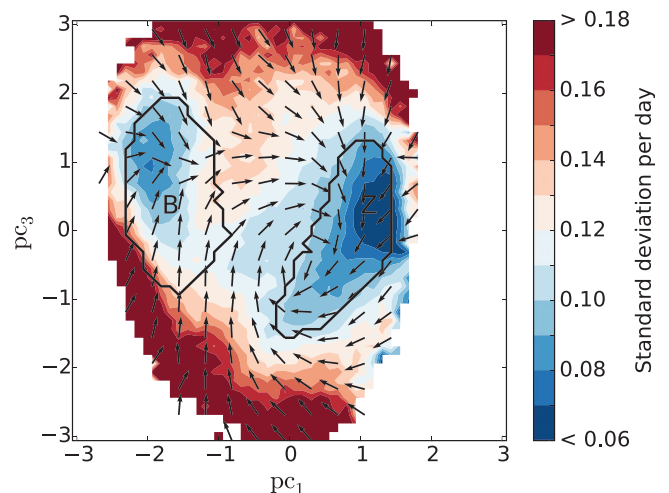


FIG. 7. Mean tendency of the normalized principal components calculated using centered differences for $\Delta t = 8$ days. Arrows represent the direction and the colors represent the magnitude (in standard deviation per day). As for the following figures, the black contours delimitate the blocked regime, marked by the letter B, and the zonal regime, marked by the letter Z.

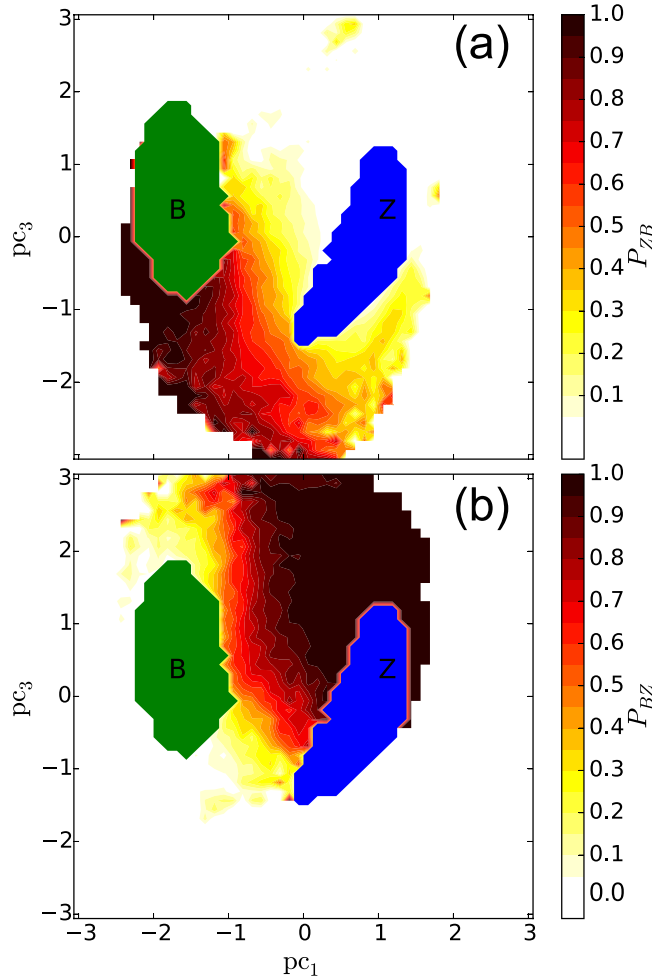


FIG. 8. Likelihood, for each grid box, to reach (a) the blocked regime before the zonal regime and (b) the zonal regime before the blocked regime.

transition matrices for different lags to provide an approximation of the transfer of densities in the reduced phase space by the flow and to build an early-warning indicator of transitions to the blocked regime.

The quality of the indicator will depend on (i) the predictability of the full system (in terms of sensitive dependence to initial conditions or rate of decay of correlations) and (ii) the validity of the Markov approximation for the reduced dynamics. While the former is determined by the dynamical system alone, the latter depends on the choice of the observable. We have seen in Sec. IV that the violation of the semigroup property indicates that the reduced dynamics are overall non-Markovian. However, the constancy of the leading rates also indicates that motions associated with the meta-stable regimes behave as Markovian, suggesting that densities transferred by the estimated transition matrices could be used to give a probability of reaching one of the regimes.

The early-warning indicator is thus designed as such. Whenever the observed trajectory (in our case, the simulation) leaves the zonal regime, we define an initial density $f_{B_i, \tau=0}$, integrating to 1 over grid-box B_i to which the last observation belongs and to zero elsewhere (one could instead define an initial density spreading over several boxes to

account for uncertainties in the observation). Next, the Markov approximation $f_{B_i, \tau=1}$ of the transfer of $f_{B_i, \tau=0}$ by the flow after a lag τ of 1 day is calculated as $f_{B_i, \tau=1} = \hat{P}_{\tau=1} f_{B_i, \tau=0}$. We then calculate the likelihood $\hat{P}(y_{\tau=1} \in R_{\text{block}} | y_0 \in B_i) = \sum_{B_j \in R_{\text{block}}} (f_{B_j, \tau=1})_j$ for a realization y_{t+1} to belong to the blocking regime knowing that y_t belongs to grid-box B_i . If this estimated probability exceeds a given critical probability p_c , an alarm of transition to the blocked regime after a lag τ_{alarm} of 1 day is given. Otherwise, the same process is repeated for $\tau = 2, 3, \dots$ until an alarm is given or a limit lag τ_{max} is reached, after which we wait for the next observation to run the forecasting system.

To illustrate this process, we show in Figure 9 the transferred density for grid box 314 marked as a blue square and lying in the region of preferred transition paths between the zonal and the blocked regimes. This initial density $f_{B_{i=314}, \tau=0}$ is plotted alone panel (d). The densities $f_{B_{i=314}, \tau=4}$, $f_{B_{i=314}, \tau=8}$, and $f_{B_{i=314}, \tau=16}$ transferred using the transition matrices $\hat{P}_{\tau=4}$, $\hat{P}_{\tau=8}$, and $\hat{P}_{\tau=16}$ are plotted in panels (a), (b), and (c), respectively. The densities $f_{B_{i=314}, \tau=2 \times 4}$ and $f_{B_{i=314}, \tau=2 \times 8}$ transferred using the square of the transition matrices $\hat{P}_{\tau=4}^2$ and $\hat{P}_{\tau=8}^2$ are also plotted in panels (e) and (f), respectively, to show how the semigroup property can be violated. The corresponding likelihoods to reach the blocked regime are written in the top left of each panel.

We can see that if a critical probability p_c of 0.3 would be chosen, an alarm of transition to the blocking regime would be raised for $\tau = 8$ days (Figure 9(b)), as described in the previous paragraph. Figure 10 shows the grid boxes for which an alarm would be given if a critical probability p_c of 0.3 was used and the respective lag τ_{alarm} after which the transition is predicted to occur. In this case, alarms are mainly flagged for trajectories passing through grid boxes close to the blocked regime or in the region of low principal component pc_3 .

The quality of the early warning indicator of transition to the blocked regime was tested over all trajectories starting when leaving the zonal regime and ending when reaching any of the regimes. In order to take into account sampling errors in the estimation of the transition matrices, the test was performed on a second 500 000-day-long simulation which was ran taking as initial state the last state of the original simulation from which the transition matrices were estimated. Out of the 11 759 trajectories starting from the zonal regime, 1993 reached the blocked regime, which we call an *occurrence* event (O), while 9766 reached the zonal regime, which we call a *non-occurrence* event (\bar{O}).

When testing a forecast system, one is interested in how many alarms (A) were given when the event actually occurred, the number of so-called *hits*, and how many did not occur, the number of so-called *false alarms*. In the case of a hit, the event occurs at a given time τ_{occ} after the alarm is given, so that not only the occurrence of the event should be forecasted but also when it will occur. For easy reference, the different cases are shown in Table I. For example, a forecast that a blocking event will occur in a month although it will truly occur only a week later is not of much help. For the purpose of assessing, the skill of a forecast not only in terms of occurrence but also in terms of precision of the forecasted

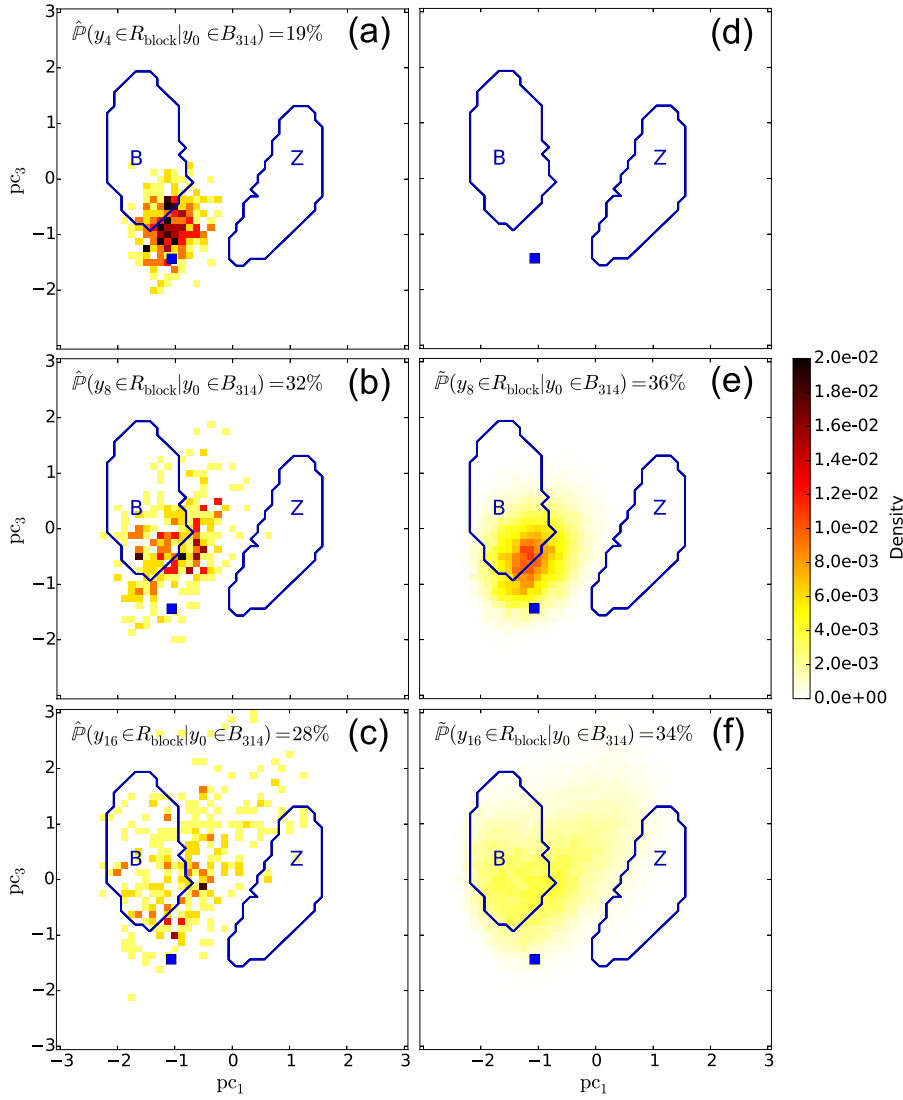


FIG. 9. Markov approximation $f_{B_{i=314},\tau}$ of the transfer of the initial density $f_{B_{i=314},\tau=0}$ for a lag τ of (a) 4 days, (b) 8 days, and (c) 16 days. The initial density is plotted in panel (d), integrating to one over box $B_{i=314}$ and to zero elsewhere. The densities transferred using the square of $\hat{P}_{\tau=4}$ and of $\hat{P}_{\tau=8}$ are plotted in (e) and (f), respectively. The corresponding likelihood to reach the blocked regime are written in the top left of each panel.

date of occurrence, we need to define a tolerance ϵ , in days, such that a hit (H) is granted only when an alarm is given with a prediction time τ_{alarm} such that $\tau_{\text{occ}} - \epsilon \leq \tau_{\text{alarm}} \leq \tau_{\text{occ}} + \epsilon$. If, however, the event is predicted to happen too

early ($\tau_{\text{alarm}} < \tau_{\text{occ}} - \epsilon$), it is counted as a *false alarm of type II* (FA2), while if the event is predicted to happen too late ($\tau_{\text{alarm}} > \tau_{\text{occ}} + \epsilon$), it is counted as a *missed alarm of type II* (MA2). When the event did not occur and no alarm (A) was given, we count a *correct rejection* (CR). When an event occurs but no alarm is given, we count a *missed alarm of type I* (MA1) and when an event is predicted but does not occur, we count a *false alarm of type I* (FA1).

To assess the skill of the forecasts based on the categories defined in Table I, we adapted the original Peirce skill score (PSS)^{55,56} to forecasts including the time of occurrence. In our case, we define the PSS as

$$S_{\text{Peirce}}(p_c) = \text{HR}(p_c) - \text{FAR}_1(p_c),$$

TABLE I. Overview of the different cases which can occur depending on the alarm given and the event occurring.

	A	A	A	\bar{A}
	$\tau_f < \tau_o - \epsilon$	$ \tau_f - \tau_o \leq \epsilon$	$\tau_f > \tau_o + \epsilon$	
O	FA2	H	MA2	MA1
\bar{O}	FA1	FA1	FA1	CR

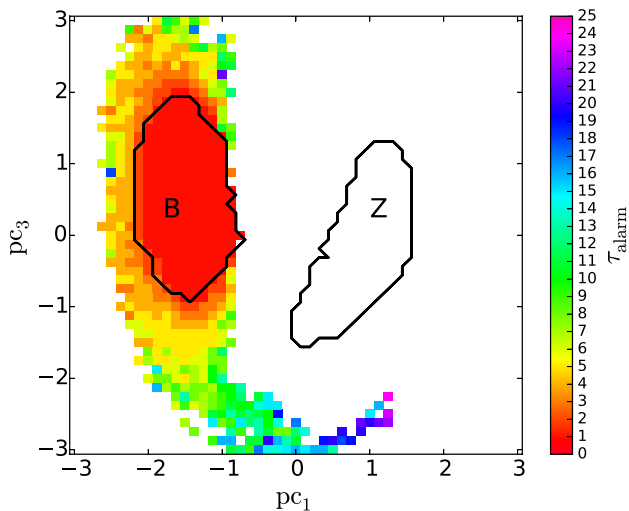


FIG. 10. Predicted time of transition to the blocked state τ_{alarm} , in days, for each grid box where an alarm is given for a critical probability p_c of 0.3.

where $\text{HR}(p_c) = H(p_c)/O(p_c)$ is the hit rate, defined as the ratio of the number of hits over the number of occurrences, and $\text{FAR}_1(p_c) = \text{FA1}(p_c)/\bar{O}(p_c)$ is the false alarm rate of type I. The hit rate gives the likelihood of giving an alarm when the event occurs, while the false alarm rate of type I gives the likelihood that an alarm is given but the event does not occur. If the hit rate exceeds the false alarm rate, the PSS is positive and the forecast has skill. A PSS of 1 is reached for a perfect forecast, when alarms are only raised when an event will actually occur and with the right predicted time of occurrence.

The PSS is plotted in Figure 11 versus the critical probability p_c and for different tolerances ϵ . A tolerance of ∞ means that the precision of the predicted date of occurrence is not taken into account in the skill score. It is evident that as the tolerance increases, the skill score increases as well. The PSS reaches a maximum for a critical probability around 0.5, depending on the tolerance. Such scores have to be put in perspective with the predicted time of occurrence τ_{alarm} . Indeed, a successful prediction of occurrence of a blocking event 1 day ahead is counted as a hit, but is not of much practical use. For this reason, we have also represented the average prediction time τ_{alarm} as a black dashed line in the same Figure 11. It is of around two weeks for a critical probability of 0.3 and around one week for a critical probability of 0.45. Thus, depending on the final purpose of the forecast system, a compromise has to be found between the skill of the forecast system and how many days ahead an event is predicted on average. Choosing a critical probability of 0.3 would give a reasonably good skill score of 0.4 (better than a no-skill forecast) with an average prediction time of 2 weeks.

To summarize, the main advantage of a forecast system relying on the transfer of densities is that it constitutes a very cheap way to account for the sensitive dependence on initial conditions of a chaotic dynamical system.

VI. ENERGETICS OF THE TRANSITIONS

In this section, we focus on the remaining question on how the dynamics of the barotropic model can explain (i) the

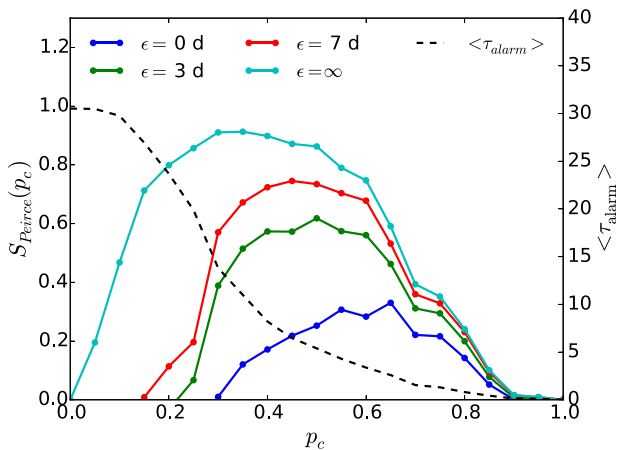


FIG. 11. Peirce skill score of the probability forecast of reaching the blocked regime versus the critical probability p_c for different tolerances ϵ (straight lines). The average time lag in days for which an alarm is given is also plotted in black dashed line.

persistence of each regime and (ii) the preferred transition paths from the zonal to the blocked regime through high values or pc_3 .

To help clarifying these issues, the hemispheric energy budget of the model is studied. First, the fields are decomposed in a $\bar{\tau} = 8$ days running mean and a deviation from it. This decomposition yields for the streamfunction

$$\psi = \bar{\psi} + \psi' \quad \text{with} \quad \bar{\psi} = \frac{1}{\bar{\tau}} \int_{t-\bar{\tau}/2}^{t+\bar{\tau}/2} \psi dt'. \quad (22)$$

Inserting (22) into Eq. (1) and applying the running mean gives the equation of the mean relative vorticity

$$\begin{aligned} \frac{\partial \nabla^2 \bar{\psi}}{\partial t} + \mathcal{J}(\bar{\psi}, \nabla^2 \bar{\psi} + f + h) + \overline{\mathcal{J}(\psi', \nabla^2 \psi')} \\ = -k_1 \nabla^2 \bar{\psi} + k_2 \nabla^8 \bar{\psi} + \nabla^2 \psi^*. \end{aligned} \quad (23)$$

Subtracting (23) from (1) gives the equation of the deviation from the running mean as

$$\begin{aligned} \frac{\partial \nabla^2 \psi'}{\partial t} + \mathcal{J}(\bar{\psi}, \nabla^2 \psi') + \mathcal{J}(\psi', \nabla^2 \bar{\psi} + f + h) \\ + \mathcal{J}(\psi', \nabla^2 \psi') - \overline{\mathcal{J}(\psi', \nabla^2 \psi')} = -k_1 \nabla^2 \psi' + k_2 \nabla^8 \psi'. \end{aligned} \quad (24)$$

In order to obtain the equation of the hemispheric average of the mean kinetic energy $\bar{E} = \langle \frac{u^2 + v^2}{2} \rangle$, with $\langle \cdot \rangle$ denoting the hemispheric average $\frac{1}{2\pi} \int_0^{2\pi} \int_0^{\pi/2} \cdot \cos \phi d\phi d\lambda$, Eq. (23) is multiplied by $\bar{\psi}$ and averaged hemispherically, giving

$$\frac{\partial \bar{E}}{\partial t} = \langle \bar{\psi} \overline{\mathcal{J}(\psi', \nabla^2 \psi')} \rangle - 2k_1 \bar{E} - k_2 \langle \bar{\psi} \nabla^8 \bar{\psi} \rangle - \langle \bar{\psi} \nabla^2 \psi^* \rangle. \quad (25)$$

The first term on the right hand side is equal to the opposite of the sum of Reynolds' stress terms which represent a conversion of mean to eddy kinetic energy. Finally, multiplying (24) by ψ' , applying the running mean and averaging over the hemisphere gives the equation of the global eddy kinetic energy $E' = \langle \frac{u'^2 + v'^2}{2} \rangle$

$$\frac{\partial E'}{\partial t} = -\langle \bar{\psi} \overline{\mathcal{J}(\psi', \nabla^2 \psi')} \rangle - 2k_1 E' - k_2 \langle \psi' \nabla^8 \psi' \rangle. \quad (26)$$

The terms in Eqs. (25) and (26) were calculated from the model simulation results and we could verify that the calculated tendencies equated the sum of the right hand side terms but for a small error of up to 13% of the standard deviation of the tendencies due to the running average of a deviation not being exactly zero.

The energetics of the transitions can be studied by plotting the kinetic energies (Fig. 12) and the terms in the energy budget (Fig. 13) averaged for each grid box of the reduced phase space. To these plots, a 200 days long trajectory transiting smoothly from the zonal to the blocked regime is added in green, starting with a black square and ending with a black triangle. It is first interesting to notice that low values

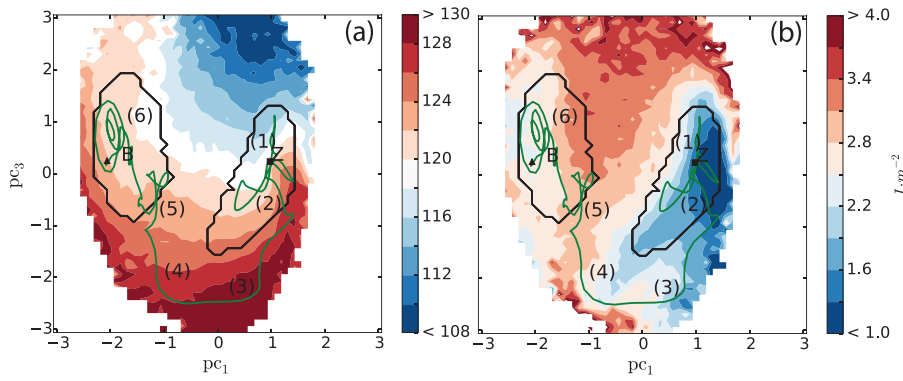


FIG. 12. (a) Hemispheric mean kinetic energy \bar{E} in J m^{-2} . (b) Hemispheric eddy kinetic energy E' in J m^{-2} . The green line, starting with a black square, and ending with a black triangle, represents a 200 days long trajectory transiting from the zonal to the blocked regime.

of E' coincide rather well with our definition of the regimes (Fig. 12(b)). The fact that the eddies are weak in the neighborhood of the regimes is mostly explained by low values of conversion to eddy kinetic energy (Fig. 13(c)), in particular, for the zonal regime, and additionally by a negative forcing for the blocked regime (Figs. 13(c) and 13(d)). This stabilization of the flow in the region of regimes is a good physical candidate to explain their persistence.

We have seen (Sec. V) that typical trajectories from the zonal to the blocked regime transit through the region of negative pc_3 . Figures 12 and 13 allow us to give a typical scenario for such a transition. Each step of the following scenario is marked in Figures 12 and 13 by the corresponding number.

- (1) Starting in the zonal regime, the Reynolds' stress terms are small and the mean flow is stable. However, the positive forcing induces an increase of the mean kinetic energy \bar{E} .
- (2) As \bar{E} increases and the forcing persists, the trajectory evolves to lower value of pc_3 and eventually leaves the zonal regime.

- (3) The trajectory then reaches a region of pc_1 close to zero and low pc_3 . The forcing is still strong but the Reynolds stress terms begin to increase because the strongly sheared flow becomes barotropically unstable for lower values of pc_3 , so that the total eddy kinetic energy E' continues to increase.
- (4) As the trajectory reaches lower values of pc_1 , the forcing reverses but the Reynolds' stress terms continue to increase as the barotropic eddies which emanated at the previous step develop, so that \bar{E} is converted to E' which continues to increase.
- (5) The trajectory then goes to larger values of pc_3 where the forcing is negative and energy is removed both from the mean flow and from the eddies so that the barotropic eddies decay.
- (6) The trajectory eventually reaches the blocked regime for lower values of pc_1 where E' decreases due to the negative forcing coincident with relatively small Reynolds' stress terms. The mean flow is once again relatively stable, although not as much as for the zonal regime, as can be seen for the relatively large Reynolds stress terms in the region of largest pc_1 inside the blocked regime.

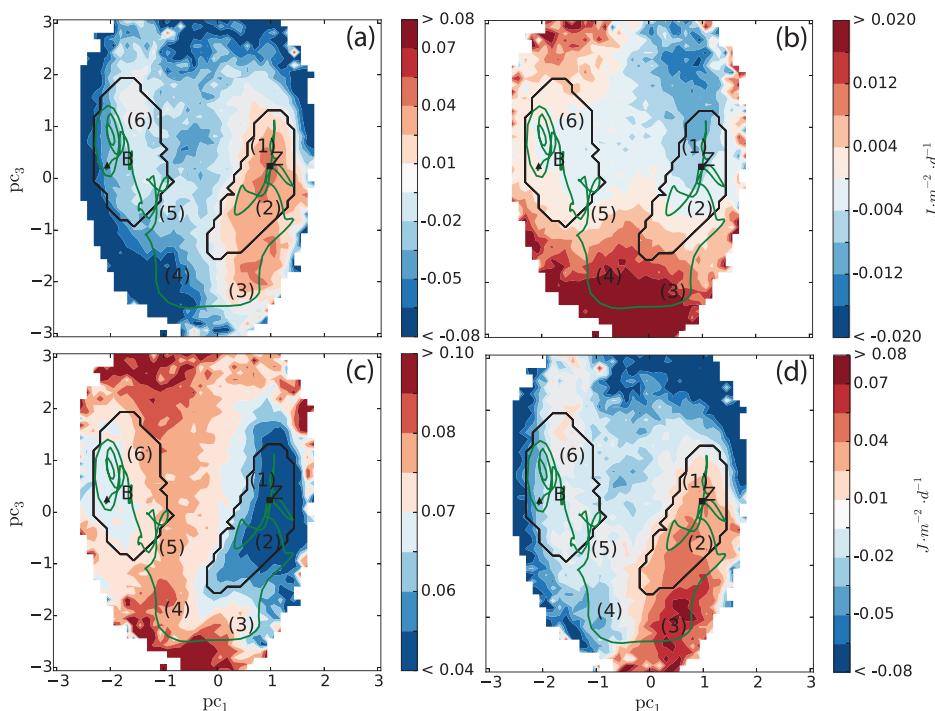


FIG. 13. (a) Tendency of the hemispheric mean kinetic energy in $\text{J m}^{-2} \text{ day}^{-1}$, (b) Tendency of the hemispheric eddy kinetic energy in $\text{J m}^{-2} \text{ day}^{-1}$. (c) Hemispheric Reynolds stresses (conversion from mean to eddy kinetic energy when positive) in $\text{J m}^{-2} \text{ day}^{-1}$. (d) Sum of hemispheric forcing and dissipation in $\text{J m}^{-2} \text{ day}^{-1}$. The green line, starting with a black square, and ending with a black triangle, represents a 200 days long trajectory transiting from the zonal to the blocked regime.

This scenario is consistent with the mechanisms of chaotic itinerancy,²⁶ heteroclinic connections,^{20,28} and almost-invariant sets bounded by invariant manifolds.⁷⁸ Indeed, when the reduced state is in the zonal regime, the flow is relatively stable as it belongs to what would be the basin of attraction of the zonal regime. However, as it moves towards the neighborhood of positive forcing, energy is given to the mean flow, the horizontal shear increases, and the flow becomes unstable to small perturbations. The increasing Reynolds' stress term indicates that the perturbation grows, starts to interact with the mean flow, and enables the state to leave the basin of attraction of the zonal regime.

VII. SUMMARY, DISCUSSION, AND CONCLUSIONS

Using concepts of transfer operators of dissipative dynamical systems, stochastic reduction, and meta-stable regimes, we developed an early warning indicator of midlatitude atmospheric regime transitions. It was applied here to the transitions between a zonal and blocked flow in a barotropic hemispheric atmosphere model.

Transfer operators yield the evolution of densities induced by the flow. Markov operators have been estimated on the reduced phase space to approximate the point spectrum of the generator of the transfer operators, namely, the Ruelle-Pollicott resonances. Their approximation for different lags has been used to assert the presence of slow dynamics associated with meta-stable regimes and the impact of memory effects on these motions. The presence of rates close to zero and separated from the rest of the spectrum supports the existence of almost-invariant sets associated with meta-stable regimes and with time scales of three to six weeks. Furthermore, the relative constancy of these rates showed that memory effects are weak in the meta-stable regimes and along the transition path from the zonal to the blocked regime.

In order to objectively define these regimes, we have developed an algorithm for the computation of almost-invariant sets based on earlier work in Refs. 68, 78, and 80, as well as on optimal Markov chain reduction^{85,86} and greedy optimization in networks.⁸⁸ The algorithm attempts to minimize a measure of the distance between the reduced Markov operator (giving the transition probabilities between the almost-invariants) and the original one and allows the detection of sets which are both recurrent and persistent. The algorithm has enabled us to robustly define the blocked and the zonal regimes.

Compared to spectral almost-invariant detection algorithms such as developed earlier by Refs. 68 and 78–80, which are based on the decomposition of the leading eigenvectors of the transfer operator into characteristic functions supporting the almost-invariant sets, our algorithm is expected to perform better in the detection of more than two almost-invariant sets, since the latter uses an aggregative implementation rather than a divisive one like the spectral algorithms. For example, a similar algorithm⁸⁶ has been used for the detection of a dozen of communities, associated with spatial patterns of variability, in a correlation network of sea surface temperature.⁹¹ In this study, we were only interested

in the bi-partition problem and our algorithm showed comparable performance in terms of invariance with respect to that in Ref. 78.

The transfer operator based algorithms are also comparable to Hidden Markov Models (HMM),^{11,12} with the difference that the former are non-parametric (no assumption is made on the distribution of the reduced states). Contrary to HMM, our algorithm detects hard clusters (non-overlapping sets) and takes as input the transfer operator rather than directly the time series of the observable. In theory, it would be possible to adapt the algorithm to soft clustering (to allow overlapping between the clusters) but the optimization problem would become harder as it would necessitate another algorithm than the (combinatorial) greedy algorithm.

The energy budget of the model showed that striking similarities exist between regions of low EKE and regions of almost-invariance, weak tendency, and small memory effects. Low EKE is indicative of stability of the mean flow and thus of almost-invariance, low tendency as well as weaker memory effects due to the small amplitude of the faster unresolved variables.

The early warning indicator is based on a forecasting scheme involving the evolution of densities by the estimated transfer operator in a two-dimensional reduced phase space spanned by two EOFs of the model. It relies on the Markov approximation of the evolution of an initial density in the neighborhood of the latest observation of the system and on the estimation of the probability to reach the blocked regime. A warning is broadcasted for a lag τ_{alarm} if this probability exceeds a prescribed critical probability. The quality of the early warning indicator, as measured by the Peirce Skill Score, is highest for a critical probability of about 0.5 but a smaller critical probability of 0.3 allows to emit warnings two weeks ahead of the event, on average. A next step is to investigate how this promising indicator would perform for more realistic models of atmospheric flow transitions.

While the model here has obvious deficiencies (e.g., the lack of the representation of baroclinic instability), it is one of the midlatitude atmospheric models for which regime transitions are found and hence forms a nice test model for the development of the early warning indicator. The computational procedure can, in principle, be carried out with a General Circulation Models (GCM) exhibiting regime behavior,^{16,18} if sufficiently long simulations can be performed. Note that in our case, we used a 500 000-day-long simulation (~ 1300 years) to assure the significance of our statistics. However, the dominant part of the spectrum was found to be robust to the use of only 50×365 samples which is the typical size of an operational GCM or a reanalysis record. The question remains if the transfer operator based early warning indicator would perform well with nearly Gaussian GCM or observational data,^{11,16,18} where it is not clear whether preferred transition paths between the meta-stable regimes exist.

Another application could be to estimate transfer operators from a long run of an operational weather prediction GCM and use these operators in parallel with a deterministic run of the GCM, in order to account for both uncertainty in

the deterministic forecast,⁹² and to give an early warning indicator of transition to a new meta-stable regime.

Finally, the early warning indicator presented here certainly extends those based on critical slowdown,⁵⁰ such as the increase in variance and lag-1 autocorrelation, which definitely have problems in high-dimensional phase space. Even the network based indicators^{51–54} are not readily extended to high-dimensional systems. It is therefore hoped that the techniques in this paper will find application in many types of chaotic high-dimensional systems as found in physics and engineering.

ACKNOWLEDGMENTS

The authors would like to thank Daan Croomelin for sharing his version of the model and giving us valuable comments on the manuscript, in particular, for Sec. IV A. We also deeply thank Mickael Chekroun *et al.* for explaining the essence of the article,⁴⁹ his comments on the robustness of the results and for the inspiring discussions regarding the ergodic theory of dissipative systems. Finally, the authors are very thankful to the reviewers whose careful comments greatly contributed to the improvement of the article, in particular, regarding Sec. IV. The quality of the present paper would not have been the same without the advises of these people. The authors would like to acknowledge the support of the LINC project (No. 289447) funded by EC's Marie-Curie ITN program (FP7-PEOPLE-2011-ITN).

APPENDIX A: BOOTSTRAP APPLIED TO TRANSITION MATRICES

This Appendix is concerned with the limited length of the record used to estimate the transition matrices $\{\hat{P}_\tau\}$ defined in Sec. III B. This statistical inference problem can result in errors, notably in the rates and the regimes calculated from $\{\hat{P}_\tau\}$ in Secs. IV A and IV C, respectively, and requires an estimation of confidence intervals.

Following Chekroun *et al.*,⁴⁹ we use a version of the non-parametric bootstrap,^{93,94} adapted to the estimation of transition matrices as done in Ref. 95. It starts from the matrix T_τ counting the transitions of $\{y_i\}$ from one grid box to another, before the normalization has been applied to get the transition probabilities. From T_τ , N_s surrogate count matrices $\{T_{\tau,s}^*\}_{1 \leq s \leq N_s}$ are generated. This is done, for each row i , by taking with replacement n_i target grid boxes among the n_i transitions starting from grid-box B_i of T_τ . This accounts for drawing n_i times from a Multinomial distribution with vector of probabilities $\{(\hat{P}_\tau)_{i,l}\}_{1 \leq l \leq m}$. From these N_s surrogate count matrices, the transition matrices $\{\hat{P}_{\tau,s}^*\}_{1 \leq s \leq N_s}$ are then calculated by normalizing their rows. These matrices can then be used to estimate the sampling error of any functions of the transition matrix \hat{P}_τ .

A thousand surrogate matrices $\{\hat{P}_{\tau,s}^*\}_{1 \leq s \leq N_s}$ are used to compute 99% confidence intervals for the rates represented in Figure 4. For each lag τ , the leading rates have been calculated for every surrogate transition matrix in $\{\hat{P}_{\tau,s}^*\}_{1 \leq s \leq N_s}$. For each rate $r_i(\tau)$ one gets a distribution of surrogate rates $\{(r_i(\tau))_s^*\}_{1 \leq s \leq N_s}$. After sorting these distributions, the

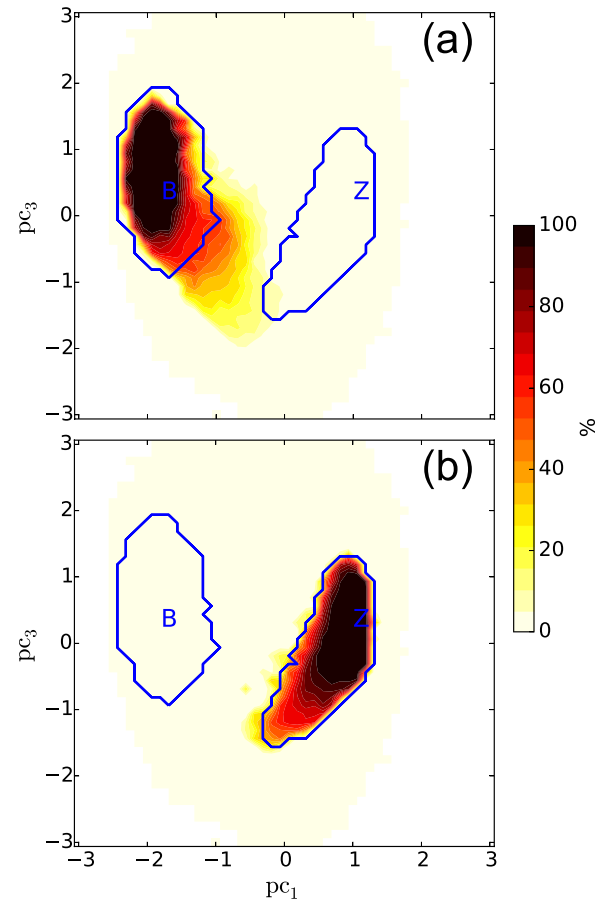


FIG. 14. The value at each grid box represents the fraction of surrogate regimes for which the grid box belongs to (a) the blocked regime or (b) the zonal regime out of a 100 surrogates. The surrogate regimes were detected by applying the algorithm of Sec. IV C to the bootstrap surrogate transition matrices.

($0.005 * N_s$)th and the ($0.995 * N_s$)th values are taken to give the lower bound and the upper bound, respectively, of the confidence interval for rate $r_i(\tau)$.

In this study, we added a bias correction to the intervals because the described construction of the surrogate matrices introduces a bias towards lower values for rates, in particular, for the secondary rates. We give an example to explain this bias. Assume that only two transitions start from a box B_i , with targets B_k and B_l . In the surrogate, the probability to pick two different transitions (B_k and B_l) will be of $1/2$, while the probability to pick two of the same transitions (twice B_k or twice B_l) will also be of $1/2$. Thus, a bias is introduced towards a weaker mixing resulting in lower values of the rates (in particular, to the secondary ones more sensitive to such details). This bias was removed by centering the mean of the surrogate rates $\{(r_i(\tau))_s^*\}_{1 \leq s \leq N_s}$ to the value of the original rate $r_i(\tau)$ being tested.

The surrogate transition matrices $\{\hat{P}_{\tau,s}^*\}_{1 \leq s \leq N_s}$ can also be used to test the robustness of the regimes to the sampling by running, for each $\hat{P}_{\tau,s}^*$, the regime detection algorithm described in Sec. IV C. The membership of a grid box to a regime can be given by a membership matrix $M_{i\beta}$ such that $M_{i\beta} = 1$ if grid box B_i belongs to regime E_β , and is zero otherwise. Confidence intervals are not well suited for statistics

taking logical values. Instead, we compute, for each grid-box B_i , the fraction of surrogates for which B_i belongs to regime E_β . These fractions are plotted in Figures 14(a) and 14(b) for the blocked and the zonal regime, respectively, using $N_s = 100$ surrogates.

We can see that the core of the regimes are very robust to the sampling, as indicated by the amount of grid boxes in each regime for which a fraction close to a 100% of the boxes of the surrogates have been attributed to the same regime. However, boxes along the path of the transition from the zonal to the blocking regimes are less robust to the sampling. Such exit-region and entering-region for the zonal and the blocked regime, respectively, are indeed harder to attribute to a regime, since they correspond to regions where the invariance is weak. A possibility would be to add a simulated annealing step in the almost-invariant sets detection algorithm as has been used, for example, in Rosvall and Bergstrom.⁸⁶

APPENDIX B: ROBUSTNESS TO GRID RESOLUTION

The robustness of the rates and the regimes to the grid resolution for which the transition matrices are estimated is tested next.

Figures 15(a) and 15(b) represent rates calculated from transition matrices estimated on a grid of 10×10 and 100×100 boxes, respectively, to be compared with Figure 4

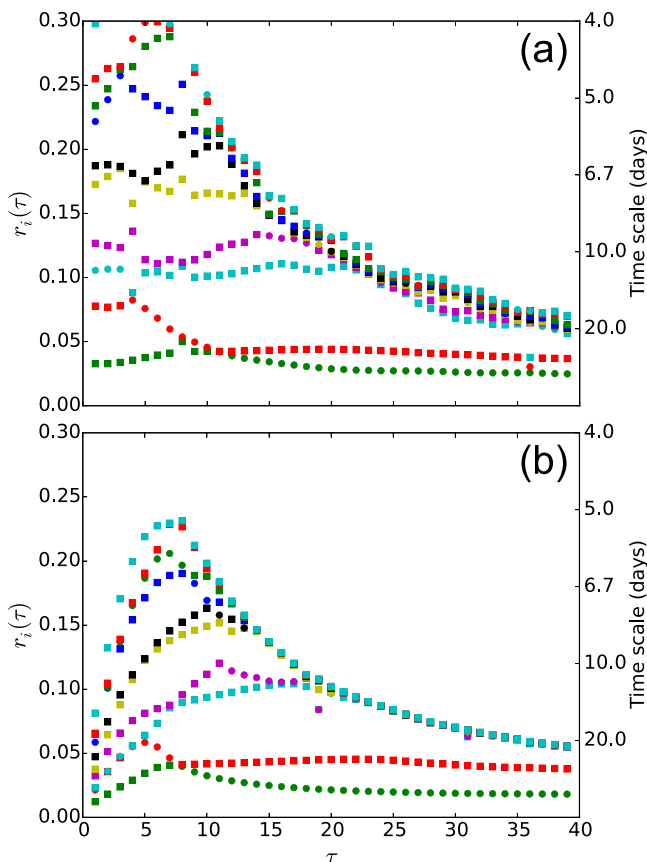


FIG. 15. Rates $r_i(\tau)$ as in Figure 4 but calculated from estimates of transition matrices on a (a) 10×10 grid and (b) 100×100 grid.

of Sec. IV A. We can see that at least the 3 leading rates in green, red, and cyan are not much affected by the grid resolution so that the analysis of Sec. IV A remains valid under changes of the grid in this range. This robustness to the grid of the leading rates is in agreement with the fact that they represent slow large-scale motions less likely to be affected by small perturbations of the transition matrices.

Figures 16(a) and 16(b) represent regimes detected from transition matrices estimated on a grid of 20×20 and 200×200 boxes, respectively, to be compared with Figure 6 of Sec. IV C. It can be seen that in both cases the regimes are very much alike to the one plotted in Figure 6 for the grid of 50×50 boxes. The quality of the regimes deteriorates for grids coarser than 20×20 (not represented here) but remains relatively good for resolutions as refined as 200×200 (Fig. 16(b)). This robustness of the regimes to very refined resolutions can be explained by the aggregative nature of the almost-invariant sets detection algorithm. Indeed, one expects the estimates of the transition probabilities between grid boxes to deteriorate as the grid becomes thinner and as the number of samples by grid box decreases. However, because the algorithm iteratively agglomerates grid boxes into clusters, the transition probabilities between these coarser and coarser clusters become less and less sensitive to the sampling as the number of samples by clusters increases with their size.

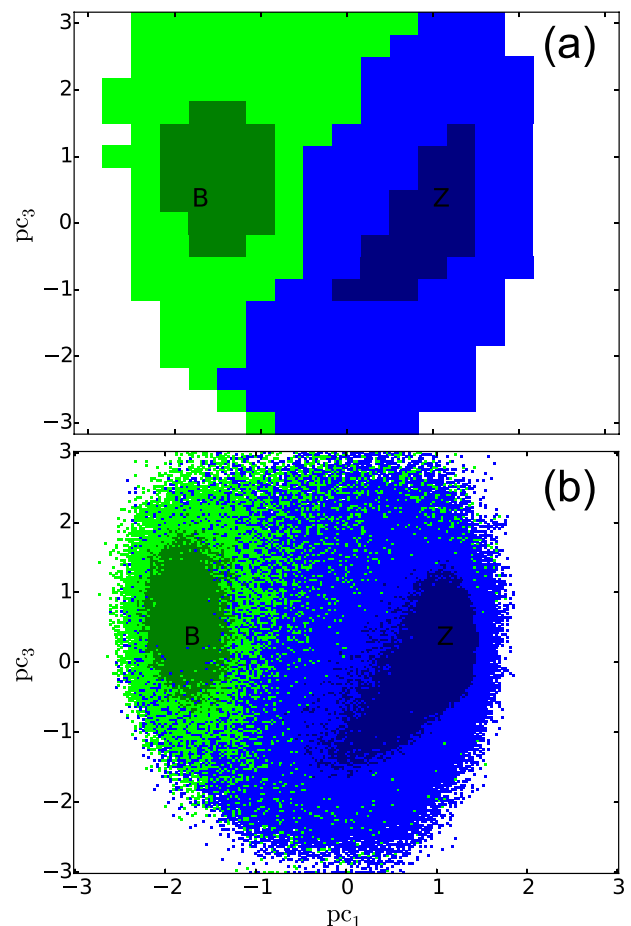


FIG. 16. Almost-invariant sets and their regimes as for Figure 6 but for a grid of (a) 20×20 and (b) 200×200 .

APPENDIX C: ROBUSTNESS OF THE REGIMES TO THE TIME LAG

In addition to the robustness test of the regimes to the grid resolution, we next test their robustness to the choice of the time lag of the transition matrix from which they are detected. Regimes detected for lags τ of 7 and 50 days are plotted in Figures 17(a) and 17(b), respectively, to be compared to Figure 6 of Sec. IV C. In this range, we can see that the quality of the regimes is robust to the lag.

For lags shorter than 7 days, however, the algorithm is not able to distinguish the transition path between the zonal and the blocked regime from the regimes themselves (not shown here). Such result is in agreement with the fact that for lags smaller than 7 days, the complex pair of rates represented by green squares in Figure 4, more likely to be associated with the transition, is dominant over the real eigenvalue represented by red circles and likely to be associated with the meta-stability of the regimes. Thus, the motions associated with the transition appear to be dominant over the meta-stability of the regimes for such short lags.

The deterioration of the regimes for lags larger than 50 days is to be expected due to the fact that, as seen Sec. IV A, the leading rates of Figure 4, associated with meta-stability, have time-scales not larger than 40 days; so that for longer

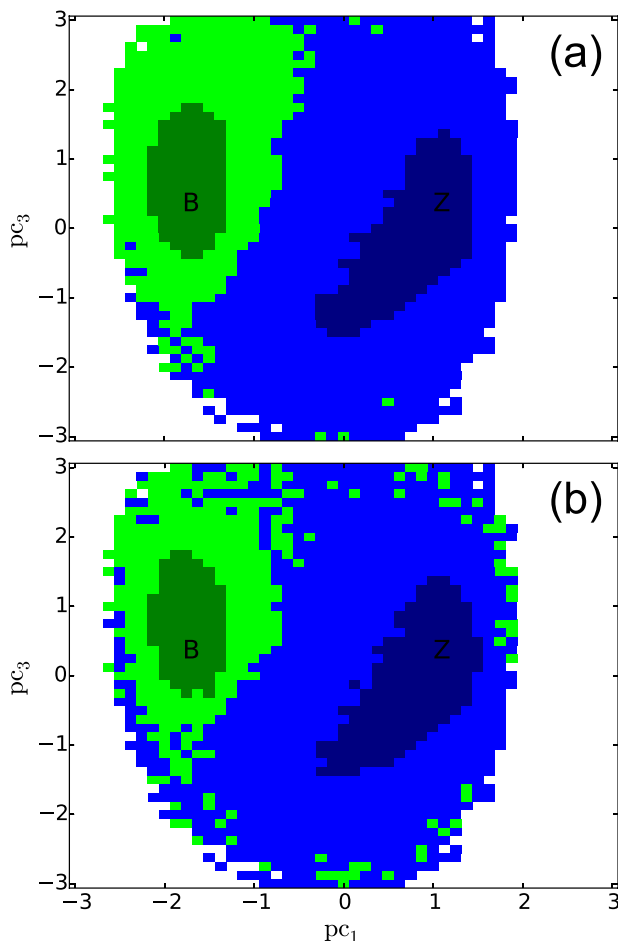


FIG. 17. Almost-invariant sets and their regimes as for Figure 6 but for a lag of (a) 7 days and (b) 50 days.

lags, the motions associated with the meta-stable regimes are likely to decorrelate and cannot be detected by the algorithm.

APPENDIX D: TEST OF THE SEMIGROUP PROPERTY

In this Appendix, we justify that the distances plotted in Figure 5(a) in Sec. IV A, between densities transferred by a power of 2 of \hat{P}_8 and densities transferred by $\hat{P}_{2 \times 8}$, are mostly explained by memory effects rather than by the Galerkin approximation or by the sampling.

To do so, we first represent the same distances but calculated from transition matrices estimated from time series of only 250 000 realizations and as much as 1 000 000 realizations (Figs. 18(a) and 18(b), respectively), compared to the 500 000 realizations from which the distances represented in Figure 5 have been calculated. We can see that neither plots seem to be affected by the short or long length of the time-series. One has to go to record lengths shorter than 200 000 realizations to start to see a difference in the distances (not shown here). Thus, the distances represented in Figure 5 are not likely to be due to the limited length of the time-series from which the transition probabilities have been calculated.

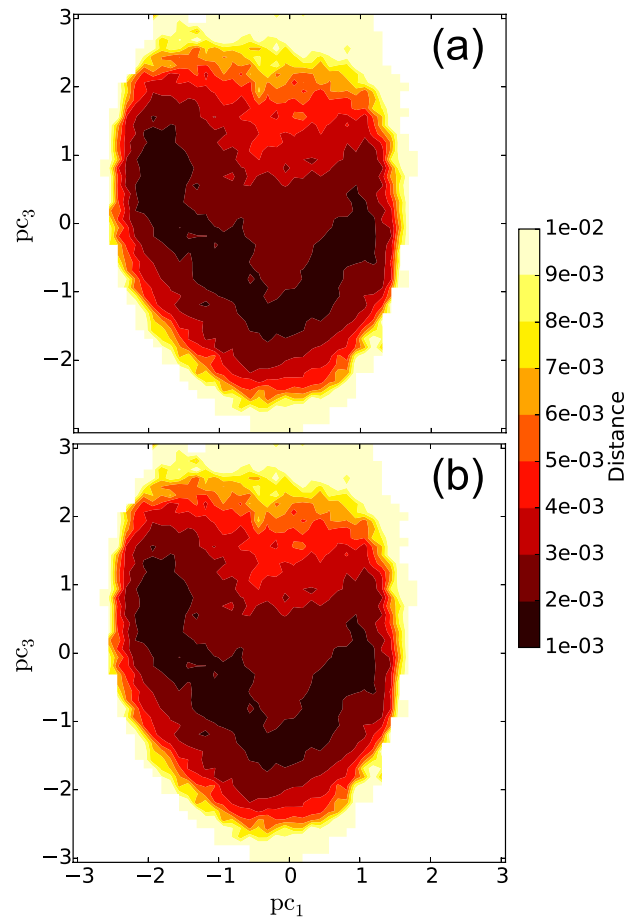


FIG. 18. As for Figure 5, the value at each grid-point represents the distance, for an initial density of 1 at this grid-point, between the density f_{8k}^{pow} transferred by the k th power of \hat{P}_8 and a density f_{8k}^{long} transferred by $\hat{P}_{k \times 8}$ for $k=2$. However, the transition matrices have been estimated from a time series of (a) 250 000 days and (b) 1 000 000 days, compared to the 500 000 of Figure 5.

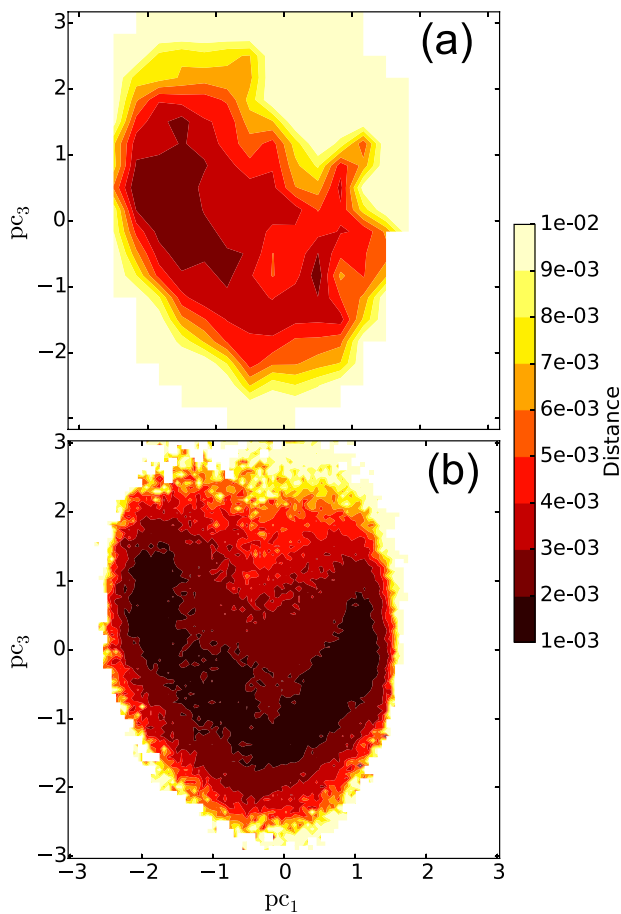


FIG. 19. As for Figure 5, the value at each grid-point represents the distance, for an initial density of 1 at this grid-point, between the density f_{8k}^{pow} transferred by the k th poser of \hat{P}_8 and a density f_{8k}^{long} transferred by $\hat{P}_{k \times 8}$ for $k=2$. However, the transition matrices have been estimated from on a grid of (a) 20×20 and (b) 100×100 boxes, compared to the 50×50 boxes of Figure 5.

Second, to test the effect of the Galerkin approximation on the distances, we have again reproduced in Figure 5, using 500 000 realizations, but with a grid of 20×20 and 100×100 (Figs. 19(a) and 19(b), respectively). While for the 20×20 grid, the distances get larger, indicating that this increase is due to the Galerkin approximation, the distances for the 100×100 grid resolution (Fig. 19(b)) are very much alike the one for the 50×50 resolution (Fig. 5). Note that this is also true when a record length of 1 000 000 realizations (not shown here), so that the similarities between the plots is not likely to be due to a compensating effect between the grid resolution and the number of samples per grid point.

We can thus conclude that the distances represented in Figure 5 for \hat{P}_8^2 and $\hat{P}_{2 \times 8}$ are mostly due to memory effects introduced by the only partial observation of the barotropic model.

¹E. Lorenz, *J. Atmos. Sci.* **20**, 130 (1963).

²T. N. Palmer, *Weather* **48**, 314 (1993).

³I. N. James, *Introduction to Circulating Atmospheres*, edited by R. W. Houghton, M. J. Rycroft, and A. J. Dessler (Cambridge University Press, Cambridge, 1994).

⁴K. C. Mo and M. Ghil, *J. Geophys. Res.* **93**, 10927, doi:10.1029/JD093iD09p10927 (1988).

⁵M. Kimoto and M. Ghil, *J. Atmos. Sci.* **50**, 2625 (1993).

⁶P. Smyth, K. Ide, and M. Ghil, *J. Atmos. Sci.* **56**, 3704 (1999).

⁷G. Plaut and R. Vautard, *J. Atmos. Sci.* **51**, 210 (1994).

⁸M. Ghil and A. Robertson, *Proc. Natl. Acad. Sci. U.S.A.* **99**, 2493 (2002).

⁹D. Kondrashov, K. Ide, and M. Ghil, *J. Atmos. Sci.* **61**, 568 (2004).

¹⁰P. Smyth, K. Ide, and M. Ghil, *J. Atmos. Sci.* **56**, 3704 (1999).

¹¹A. J. Majda, C. L. Franzke, A. Fischer, and D. Crommelin, *Proc. Natl. Acad. Sci. U.S.A.* **103**, 8309 (2006).

¹²C. L. Franzke, D. Crommelin, A. Fischer, and A. J. Majda, *J. Clim.* **21**, 1740 (2008).

¹³D. B. Stephenson, A. Hannachi, and A. O'Neill, *Q. J. R. Meteorolog. Soc.* **130**, 583 (2004).

¹⁴B. Christiansen, *J. Clim.* **20**, 2229 (2007).

¹⁵D. R. Fereday, J. R. Knight, A. A. Scaife, C. K. Folland, and A. Philipp, *J. Clim.* **21**, 3687 (2008).

¹⁶A. Dawson, T. N. Palmer, and S. Corti, *Clim. Dyn.* **39**, L21805 (2014).

¹⁷T. Jung, T. N. Palmer, and G. J. Shutts, *Geophys. Res. Lett.* **32**, L23811, doi:10.1029/2005GL024248 (2005).

¹⁸A. Dawson, T. N. Palmer, and S. Corti, *Geophys. Res. Lett.* **39**, L21805 (2012).

¹⁹J. G. Charney and J. G. DeVore, *J. Atmos. Sci.* **36**, 1205 (1979).

²⁰E. R. Weeks, H. L. Swinney, and M. Ghil, *Science* **278**, 1598 (1997).

²¹P. D. Williams, *Geophys. Res. Lett.* **30**, 2255, doi:10.1029/2003GL018498 (2003).

²²P. D. Williams, T. W. N. Haine, and P. L. Read, *Nonlinear Processes Geophys.* **11**, 127 (2004).

²³P. D. Williams, T. W. N. Haine, and P. L. Read, *J. Fluid Mech.* **528**, 1 (2005).

²⁴P. D. Williams, T. W. N. Haine, and P. L. Read, *J. Atmos. Sci.* **65**, 3543 (2008).

²⁵K. Kaneko, *Phys. D* **54**, 5 (1991).

²⁶H. Itoh and M. Kimoto, *J. Atmos. Sci.* **53**, 2217 (1996).

²⁷D. Crommelin, J. D. Opsteegh, and F. Verhulst, *J. Atmos. Sci.* **61**, 1406 (2004).

²⁸D. Crommelin, *J. Atmos. Sci.* **60**, 229 (2003).

²⁹F. M. Selten, *J. Atmos. Sci.* **52**, 915 (1995).

³⁰B. Legras and M. Ghil, *J. Atmos. Sci.* **42**, 433 (1985).

³¹G. Branstator and J. D. Opsteegh, *J. Atmos. Sci.* **46**, 1799 (1989).

³²C. W. Gardiner, *Handbook of Stochastic Methods*, edited by H. Haken (Springer, Berlin Heidelberg, 2009), p. 447.

³³C. Penland, *Bull. Am. Meteorol. Soc.* **84**, 921 (2003).

³⁴A. J. Majda, I. Timofeyev, and E. Vanden-Eijnden, *Proc. Natl. Acad. Sci.* **96**, 14687 (1999).

³⁵A. J. Majda, I. Timofeyev, and E. Vanden-Eijnden, *Commun. Pure Appl. Math.* **54**, 891 (2001).

³⁶C. L. Franzke, A. J. Majda, and E. Vanden-Eijnden, *J. Atmos. Sci.* **62**, 1722 (2005).

³⁷C. L. E. Franzke, T. J. O'Kane, J. Berner, P. D. Williams, and V. Lucarini, *Wiley Interdiscip. Rev.: Clim. Change* **6**, 63 (2015).

³⁸A. J. Chorin and O. H. Hald, *Stochastic Tools in Mathematics and Science*, edited by S. Antman, P. Holmes, and K. Sreenivasan (Springer, New York, 2009).

³⁹E. Darve, J. Solomon, and A. Kia, *Proc. Natl. Acad. Sci. U.S.A.* **106**, 10884 (2009).

⁴⁰J. Wouters and V. Lucarini, *J. Stat. Phys.* **151**, 850 (2013).

⁴¹D. Kondrashov, M. D. Chekroun, and M. Ghil, *Phys. D* **297**, 33 (2015).

⁴²T. Palmer and P. D. Williams, *Stochastic Physics and Climate Modelling*, edited by P. Williams and T. Palmer (Cambridge University Press, Cambridge, 2009), p. 496.

⁴³A. Lasota and M. C. Mackey, *Chaos, Fractals and Noise*, edited by J. E. Marsden and L. Sirovich (Springer, Berlin, 1994).

⁴⁴G. Froyland and K. Padberg-gehle, *Ergodic Theory, Open Dynamics, and Coherent Structures*, edited by W. Bahsoun, C. Bose, and G. Froyland, Springer Proceedings in Mathematics and Statistics Vol. 70 (Springer, New York, NY, 2014), pp. 171–216.

⁴⁵M. Pollicott, *Inventiones Math.* **81**, 413 (1985).

⁴⁶D. Ruelle, *Phys. Rev. Lett.* **56**, 405 (1986).

⁴⁷D. Ruelle, *J. Stat. Phys.* **44**, 281 (1986).

⁴⁸O. Butterley and C. Liverani, *J. Mod. Dyn.* **1**, 301 (2007).

⁴⁹M. D. Chekroun, J. D. Neelin, D. Kondrashov, J. C. McWilliams, and M. Ghil, *Proc. Natl. Acad. Sci. U.S.A.* **111**, 1684 (2014).

⁵⁰M. Scheffer, J. Bascompte, W. A. Brock, V. Brovkin, S. R. Carpenter, V. Dakos, H. Held, E. H. van Nes, M. Rietkerk, and G. Sugihara, *Nature* **461**, 53 (2009).

⁵¹M. van der Mheen, H. A. Dijkstra, A. Gozolchiani, M. den Toom, Q. Feng, J. Kurths, and E. Hernandez-Garcia, *Geophys. Res. Lett.* **40**, 2714, doi:10.1002/grl.50515 (2013).

- ⁵²J. Viebahn and H. A. Dijkstra, *Int. J. Bifurcation Chaos* **24**, 1430007 (2014).
- ⁵³Q. Y. Feng, J. P. Viebahn, and H. A. Dijkstra, *Geophys. Res. Lett.* **41**, 6009, doi:10.1002/2014GL061019 (2014).
- ⁵⁴G. Tirabassi, J. Viebahn, V. Dakos, H. Dijkstra, C. Masoller, M. Rietkerk, and S. Dekker, *Ecol. Complexity* **19**, 148 (2014).
- ⁵⁵C. S. Peirce, *Science* **4**, 453 (1884).
- ⁵⁶D. B. Stephenson, *Weather Forecasting* **15**, 221 (2000).
- ⁵⁷J. E. Thornes and D. B. Stephenson, *Meteorol. Appl.* **8**, 307 (2001).
- ⁵⁸J. Roads, *J. Atmos. Sci.* **44**, 3495 (1987).
- ⁵⁹H. von Storch and F. W. Zwiers, in *Statistical Analysis in Climate Research* (Cambridge University Press, Cambridge, 1999), Chap. 13, pp. 293–316.
- ⁶⁰D. Givon, R. Kupferman, and A. Stuart, *Nonlinearity* **17**, R55 (2004).
- ⁶¹W. Rudin, *Functional Analysis*, edited by L. Gurley, R. Wallis, and M. Luhrs (McGraw-Hill, New York, 1991), p. 424.
- ⁶²S. Gouëzel and C. Liverani, *Ergodic Theory Dyn. Syst.* **26**, 189 (2006).
- ⁶³J.-P. Eckmann and D. Ruelle, *Rev. Mod. Phys.* **57**, 617 (1985).
- ⁶⁴L. Young, *J. Stat. Phys.* **108**, 733 (2002).
- ⁶⁵K.-J. Engel and R. Nagel, *One-parameter Semigroups for Linear Evolution Equations*, edited by S. Axler, F. W. Gehring, and K. A. Ribet (Springer, New York, 2001), p. 586.
- ⁶⁶G. Gallavotti and E. G. D. Cohen, *J. Stat. Phys.* **80**, 931 (1995).
- ⁶⁷Y. Kifer, *J. Anal. Math.* **47**, 111 (1986).
- ⁶⁸M. Dellnitz and O. Junge, *SIAM J. Numer. Anal.* **36**, 491 (1999).
- ⁶⁹M. Blank, G. Keller, and C. Liverani, *Nonlinearity* **15**, 1905 (2002).
- ⁷⁰G. Keller, C. Liverani, and T. U. D. Roma, “Stability of the spectrum for transfer operators,” Technical Report (ANN. SCUOLA NORM. SUP. PISA CL SCI, 1998).
- ⁷¹V. Baladi and M. Holschneider, *Nonlinearity* **12**, 525 (1999).
- ⁷²G. Froyland, *Nonlinear Dynamics and Statistics*, edited by A. I. Mees (Birkhäuser Boston, Boston, 2001), Chap. 12, pp. 281–321.
- ⁷³S. M. Ulam, *Problems in Modern Mathematics* (Dover Publications Inc., 1964).
- ⁷⁴G. Froyland, *Nonlinear Anal.: Theory Methods Appl.* **32**, 831 (1998).
- ⁷⁵P. Billingsley, *Statistical Inference for Markov Process* (University of Chicago Press, Chicago, 1961).
- ⁷⁶G. Froyland, O. Junge, and P. Koltai, *SIAM J. Numer. Anal.* **51**, 223 (2013).
- ⁷⁷V. Baladi, *Positive Transfer Operators and Decay of Correlations*, edited by R. S. MacKay (World Scientific, Singapore, 2000), p. 314.
- ⁷⁸G. Froyland and K. Padberg, *Physica D* **238**, 1507 (2009).
- ⁷⁹M. Dellnitz and O. Junge, *Int. J. Bifurcation Chaos* **7**, 2475 (1997).
- ⁸⁰G. Froyland and M. Dellnitz, *SIAM J. Sci. Comput.* **24**, 1839 (2003).
- ⁸¹T. DelSole, *J. Atmos. Sci.* **57**, 2158 (2000).
- ⁸²J. Berner, *J. Atmos. Sci.* **62**, 2098 (2005).
- ⁸³D. Crommelin and E. Vanden-Eijnden, *Multiscale Model. Simul.* **9**, 1588 (2011).
- ⁸⁴C. Penland and P. Sardeshmukh, *J. Clim.* **8**, 1999 (1995).
- ⁸⁵K. Deng, P. Mehta, and S. Meyn, *IEEE Autom. Control* **56**, 2793 (2011).
- ⁸⁶M. Rosvall and C. T. Bergstrom, *Proc. Natl. Acad. Sci. U.S.A.* **105**, 1118 (2008).
- ⁸⁷T. M. Cover and J. A. Thomas, *Elements of Information Theory* (John Wiley & Sons, New Jersey, 1991), Chap. 2, pp. 13–55.
- ⁸⁸A. Clauset, M. Newman, and C. Moore, *Phys. Rev. E* **70**, 066111 (2004).
- ⁸⁹V. Kharin and F. Zwiers, *J. Clim.* **16**, 4145 (2003).
- ⁹⁰G. Branstator and J. Berner, *J. Atmos. Sci.* **62**, 1792 (2005).
- ⁹¹A. Tantet and H. A. Dijkstra, *Earth Syst. Dyn.* **5**, 1 (2014).
- ⁹²T. Palmer, G. Shutts, R. Hagedorn, F. Doblas-Reyes, T. Jung, and M. Leutbecher, *Annu. Rev. Earth Planet. Sci.* **33**, 163 (2005).
- ⁹³B. Efron, “The jackknife, the bootstrap, and other resampling plans,” *Technical Report*, Stanford University, Stanford, 1980.
- ⁹⁴M. Mudelsee, *Climate Time Series Analysis: Classical Statistical and Bootstrap Methods*, edited by L. A. Mysak and K. Hamilton (Springer, New York, 2010), p. 474.
- ⁹⁵B. A. Craig and P. P. Sendi, *Health Econ.* **11**, 33 (2002).