

Journal of Nephropathology



Association of Endothelin-1 rs5370 G>T gene polymorphism with the risk of nephrotic syndrome in children

Mohammad Hashemi^{1,2}, Simin Sadeghi-Bojd^{3,4*}, Soheib Aryanezhad⁴, Maryam Rezaei²

¹Cellular and Molecular Research Center, Zahedan University of Medical Sciences, Zahedan, Iran

²Department of Clinical Biochemistry, School of Medicine, Zahedan University of Medical Sciences, Zahedan, Iran

³Children and Adolescents Health Research Center, Zahedan University of Medical Sciences, Zahedan, Iran

⁴Department of Pediatrics, School of Medicine, Zahedan University of Medical Sciences, Zahedan, Iran

ARTICLE INFO

Article type:
Original Article

Article history:
Received: 28 August 2016
Accepted: 1 December 2016
Published online: 17 December 2016
DOI: 10.15171/jnp.2017.24

Keywords:
Nephrotic syndrome
Endothelin-1
Gene polymorphism

ABSTRACT

Background: Primary nephrotic syndrome (NS) is a common kidney disease in children.
Objectives: The present study was aimed to investigate whether rs5370 G>T (lys198Asn) genetic variant of endothelin-1 (ET-1) is involved in the susceptibility to NS.
Patients and Methods: This case-control study was performed on 138 patients with NS and 150 healthy children. Genomic DNA was extracted from whole blood using salting out method. Polymorphism of the ET-1 rs5370 G>T (lys198Asn) polymorphism detected by T-ARMS-PCR as well as PCR-RFLP method.
Results: The results showed that the genotype and allelic frequencies of the ET-1 rs5370 G>T variant were not significantly different between cases and controls. Furthermore, subgroup analysis showed that rs5370 G>T variant was not associated with gender of patients. In NS patients the genotype was not associated with cholesterol, triglyceride, total protein and albumin levels.
Conclusions: In conclusion, our findings indicate that ET-1 rs5370 G>T is not associated with NS. Further studies with larger sample sizes and different ethnicities are required to validate our findings.

Implication for health policy/practice/research/medical education:

In the present study we aimed to examine the impact of endothelin-1 (ET-1) rs5370 polymorphism on nephrotic syndrome (NS) in children. Our finding did not support an association between rs5370 variant and risk of NS in our population. In the forthcoming studies, other variants of endothelin-1 should be tested to find out the possible association between endothelin-1 polymorphisms and risk of NS.

Please cite this paper as: Hashemi M, Sadeghi-Bojd S, Aryanezhad S, Rezaei M. Association of endothelin-1 rs5370 G>T gene polymorphism with the risk of nephrotic syndrome in children. J Nephropathol. 2017;6(3):138-143. DOI: 10.15171/jnp.2017.24.

1. Background

Nephrotic syndrome (NS) is a chronic pediatric disorder characterized by heavily proteinuria, hyperlipidemia, hypoalbuminemia, and peripheral edema (1,2). The annual incidence of NS is approximately 2 to 7 children per 100 000 (1). It has been proposed that minimal change NS (MCNS) and focal segmental glomerulosclerosis (FSGS) are the most common causes of idiopathic NS in children (3).

ET-1 is encoded by the *EDN1* gene which is located in chromosome 6 (6p21–24), and is a potent va-

soconstrictor that acts as a modulator of vasomotor tone and vascular remodeling (4,5). Transgenic animal models in which the human ET-1 gene was transferred into the germline of mice were established independently by two research groups (6,7). The overexpression of ET-1 was associated with a pathological phenotype manifested by signs such as age-dependent development of renal cysts, interstitial fibrosis of the kidneys, and glomerulosclerosis leading to a progressive decrease in glomerular filtration rate (GFR). But the blood pressure was not affected even after the de-

*Corresponding author: Simin Sadeghi-Bojd, Department of Pediatrics, School of Medicine, Zahedan University of Medical Sciences, Zahedan, Iran. Email:sisadegh@yahoo.com

velopment of an impaired GFR. This finding was not in agreement with previous studies which showed that ET-1 is a potent vasoconstrictor when administered intravenously (6,8).

Previous studies showed an association between the coding polymorphism lys198Asn (rs5370 G/T) of ET-1 gene and hypertension, systolic blood pressure and HDL levels but the data were inconsistent (9-13). Polymorphisms in the ET-1 gene have been shown to be associated with the morbidity of IgA nephropathy (14) and the progression of autosomal dominant polycystic kidney diseases (15). There is little data concerning the impact of ET-1 variants on NS in children (16). To the best of our knowledge, ET-1 polymorphisms were not investigated in NS in Iranian patients before.

2. Objectives

The present study aimed to examine the possible association between ET-1 rs5370 G>T gene polymorphism and NS in a sample of Iranian children.

3. Patients and Methods

This case-control study was conducted on 138 patients who suffering from NS in pediatric department of Ali-ebneh Abitaleb hospital, Zahedan, Iran (17). The control group consisted of 150 healthy children. All participants were examined by the same pediatric nephrologist. The characteristic of cases and controls are shown in Table 1. Genomic DNA was extracted from whole blood as described previously (18). The samples were stored at -20°C until analysis.

Genotyping of ET-1 rs5370 G/T polymorphism was done using tetra amplification refractory mutation system-polymerase chain reaction (T-ARMS-PCR), which is a cost-effective and fast method for detection of single nucleotide polymorphism (19). We used four primers, two external primers (forward outer: 5'-CAGATTCAGGTTTTGTTTGTGCCAGATT-3', reverse outer: 5'-TTGGGGGAACCTCCTTAACCTTTCITG-3') and two allele-specific internal primers (forward inner [G allele]: 5'-ATGATC-

Table 1. Demographic and biochemical characteristics of subjects enrolled in the study.

Parameter	Case n=138	Control n=150	P
Sex (M/F)	72/66	74/76	0.706
Age (y)	5.9 ± 3.1	5.8 ± 2.3	0.639
Total protein (g/dL)	4.61 ± 0.90	-	-
Serum albumin (g/dL)	2.37 ± 0.55	-	-
Triglyceride (mg/dL)	317.76 ± 193.33	-	-
Cholesterol (mg/dL)	381.69 ± 125.69	-	-

CCAAGCTGAAAGGCGAG-3', reverse inner [T allele]: 5'-GGGTCACATAACGCTCTCTGGAGAGA-3'). Product sizes were 191 bp for T allele, 242 bp for G allele, and 385 bp for the two outer primers (control band).

The PCR cycling condition were 5 minutes at 95°C followed by 30 cycles of 30 seconds at 95°C, 30 seconds at 55°C, and 30 seconds at 72°C with a final step at 72°C for 10 minutes to allow for complete extension of all PCR fragments. The PCR products were analyzed by electrophoresis on a 2.5% agarose gel containing 0.5 µg/mL ethidium bromide and visualized by transillumination with UV light; a photograph was then taken (Figure 1).

In addition, using forward and reverse primers of T-ARMS-PCR assay, we performed PCR-RFLP. Ten microliter of PCR product digested by Cac8I restriction enzyme (Fermentas). T allele undigested and produce 385-bp, while G allele digested and produce 164-bp and 221-bp (Figure 2). The results of PCR-RFLP were 100% concordance with results obtained by T-ARMS-PCR.

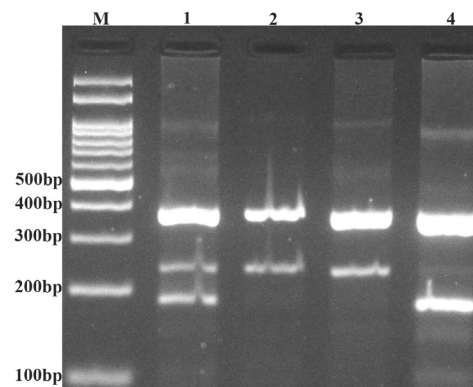


Figure 1. Photograph of the PCR product of the ET-1 rs5370 G>T polymorphism by T-ARMS-PCR method.

M: DNA marker; Lane 1: GT; Lanes 2 and 3: GG; Lane 4: TT.

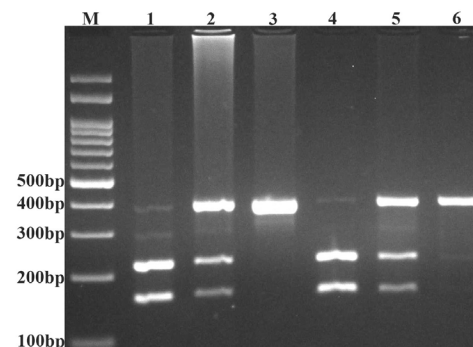


Figure 2. Photograph of the PCR product of the ET-1 rs5370 G>T by PCR-RFLP method.

M: DNA marker; Lane 1 and 4: GG; Lanes 2 and 5: GT; Lanes 3 and 6: TT.

3.1. Ethical issues

1) The research followed the tenets of the Declaration of Helsinki; 2) informed consent was obtained, and they were free to leave the study at any time; and 3) the research was approved by the ethical committee of Zahedan University of Medical Sciences (#7032).

3.2. Statistical analysis

Statistical analyses were done by statistical package SPSS 22. The data were analyzed using χ^2 test or independent sample t test according to the data. Odds ratio (OR) and 95% CI was computed from unconditional logistic regression analysis to estimate the possible association between the variant and the risk of NS. A *P* value < 0.05 was considered to be statistically significant.

4. Results

In this study 138 children with NS and 150 healthy age and sex matched children were enrolled in the study (Table 1). Genotype and allele frequencies of ET-1

rs5370 G/T polymorphism are shown in Table 2. The findings showed that rs5370 variant was not associated with NS in codominant, dominant and recessive inheritance model tested (Table 2). We performed subgroup analysis by sex and the results indicated that the genotype and allelic frequencies of rs5370 polymorphism were not significantly different in male and female (Table 3).

The biochemical parameters of NS patients were analyzed according to the ED-1 rs5370 G/T genotypes and the findings showed that the genotype were not associated with cholesterol, triglyceride, total protein and albumin levels (Table 4).

5. Discussion

NS is a common kidney disease in childhood. In the current study we examined the impact of ET-1 rs5370 variant on NS in childhood. Our findings showed that ET-1 polymorphism was not associated with the risk of NS in our population. Furthermore, this variant was not associated with cholesterol, triglyceride, and

Table 2. Genotype and allele frequency of endothelin 1 rs5370 G/T (lys198Asn) polymorphism in patients with nephrotic syndrome and control subjects

rs5370 G/T	Case No. (%)	Control No. (%)	OR (95% CI)	P
Codominant				
GG	50 (36.2)	47 (31.3)	1.00	-
GT	74 (53.7)	89 (59.4)	0.78 (0.47-1.29)	0.369
TT	14 (10.1)	14 (9.3)	0.94 (0.41-2.18)	0.922
Dominant				
GG	50 (36.2)	47 (31.3)	1.00	-
GT+TT	88 (63.8)	103 (68.7)	0.80 (0.49-1.31)	0.386
Recessive				
GG+GT	124 (89.9)	136 (90.7)	1.00	-
TT	14 (10.1)	14 (9.3)	1.10 (0.50-2.39)	0.845
Allele				
G	174 (63.0)	183 (61.0)	1.00	-
T	102 (37.0)	117 (39.0)	0.92 (0.65-1.28)	0.668

Table 3. Analysis of the association of the ED-1 rs5370 G>T polymorphism in males and females

rs5370 G/T	Male		Female	
	Case No. (%)	Control No. (%)	Case No. (%)	Control No. (%)
GG	27 (37.5)	27 (36.5)	23 (34.8)	20 (26.3)
GT	37 (51.4)	37 (50.0)	37 (56.1)	52 (68.4)
TT	8 (11.1)	10 (13.5)	6 (9.1)	4 (5.3)
	$\chi^2=0.229, P=0.891$		$\chi^2=2.445, P=0.294$	
Allele				
G	91 (63.2)	91 (61.5)	83 (62.9)	92 (60.5)
T	53 (36.8)	57 (38.5)	49 (37.1)	60 (39.5)
	$\chi^2=0.091, P=0.763$		$\chi^2=0.165, P=0.407$	

Table 4. Biochemical parameters in NS patients according to the ET-1 rs5370 G/T genotypes

Parameters	ET-1 rs5370 G/T			P
	GG	GT	TT	
Cholesterol (mg/dL)	389.1 ± 148.2	376.5 ± 117.9	385.6 ± 99.1	0.896
Triglyceride (mg/dL)	277.5 ± 123.8	344.5 ± 221.8	303.4 ± 203.7	0.271
Total protein (g/dL)	4.7 ± 0.9	4.6 ± 0.9	4.4 ± 0.9	0.475
Albumin (g/dL)	2.5 ± 0.5	2.3 ± 0.5	2.4 ± 0.9	0.383

total protein and albumin levels.

Yang et al (16) have found that ET-1 rs5370 variant was not associated with NS at genotype or allele frequencies. Although, Plasma ET-1 levels was significantly higher in NS patients in comparison with healthy children. Plasma cholesterol, a hallmark of NS, was significantly associated with the rs5370 GT genotype.

It has been proposed that genetic variation at the ET-1 has an important effect on glomerular filtration but not on urinary albumin excretion in the nondiabetic general population (20). ET-1 is a potent vasoconstrictor and shows various pharmacological responses. Renal function is influenced by direct and indirect action of endothelin. There is evidence that endothelin has an important role in rat renal postnatal development (21).

ET-1, which acts via the specific receptors ET-A and ET-B, has been implicated in the development of renal scarring.

High levels of ET-1 in plasma and tissue concentrations have been shown to be associated with the development of renal interstitial fibrosis and glomerulosclerosis (22-25). Apart from vasoconstriction, it has been revealed that endothelin has multiple biological functions in nonvascular tissues. The paracrine renal endothelin system contributes to the regulation of renal blood flow, GFR, tubular water and sodium reabsorption and control of renin release (24,26,27). In addition to extracellular matrix protein biosynthesis, ET-1 increases the expression of different genes promoting mesangial glomerular and vascular smooth muscle cells proliferation (28,29). These findings proposed that paracrine endothelin system may be involved in the pathogenesis of glomerulosclerosis. There are mounting evidence showed a correlation between glomerulonephritis/glomerulosclerosis and an activated renal endothelin system (30-32).

6. Conclusions

In conclusion, the result of this study showed that ED-1 rs5370 polymorphism was not associated with NS in a sample of Iranian population. Further studied with larger sample sizes and different ethnicities are

required to confirm our finding.

Limitations of the study

There are certain limitations in the present study. One of the limitation of our study is that we examined only one variant of ET-1 gene. The second limitation of this study is that we did not investigate the possible association between ED-1 rs5370 polymorphism and response to treatment in patients with NS.

Authors' contribution

MH and SSB designed the study, conducted analysis, interpretation of the data and wrote the manuscript. SA and MR collected the data, performed experimental analysis and interpretation of the data. All authors reviewed and approved the final manuscript.

Conflicts of interest

The authors declare no conflict of interest.

Funding/Support

This work was supported by a dissertation grant (M.D thesis of Soheib Aryanezhad) from Zahedan University of Medical Sciences.

References

1. Roth KS, Amaker BH and Chan JC. Nephrotic syndrome: pathogenesis and management. *Pediatr Rev.* 2002;23(7):237-48.
2. Hashemi M, Sadeghi-Bojd S, Raeisi M, Moazeni-Roodi A. Evaluation of paraoxonase activity in children with nephrotic syndrome. *Nephrourol Mon.* 2013;5(5):978-82. doi: 10.5812/numonthly.12606.
3. Ranganathan S. Pathology of podocytopathies causing nephrotic syndrome in children. *Front Pediatr.* 2016;4:32. doi: 10.3389/fped.2016.00032.
4. Bloch KD, Friedrich SP, Lee ME, Eddy RL, Shows TB, Quertermous T. Structural organization and chromosomal assignment of the gene encoding endothelin. *J Biol Chem.* 1989;264(18):10851-7.
5. Rankinen T, Church T, Rice T, Markward N, Leon AS, Rao DC, et al. Effect of endothelin 1 genotype on blood pressure is dependent on physical activity or fitness levels. *Hypertension.* 2007;50(6):1120-5. doi: 10.1161/HYPERTENSIONAHA.107.093609.

6. Hocher B, Thone-Reineke C, Rohmeiss P, Schmagger F, Slowinski T, Burst V, et al. Endothelin-1 transgenic mice develop glomerulosclerosis, interstitial fibrosis, and renal cysts but not hypertension. *J Clin Invest.* 1997;99(6):1380-9. doi: 10.1172/JCI119297.
7. Shindo T, Kurihara H, Maemura K, Kurihara Y, Ueda O, Suzuki H, et al. Renal damage and salt-dependent hypertension in aged transgenic mice overexpressing endothelin-1. *J Mol Med (Berl).* 2002;80(2):105-16. doi: 10.1007/s00109-001-0284-4.
8. Yanagisawa M, Kurihara H, Kimura S, Goto K, Masaki T. A novel peptide vasoconstrictor, endothelin, is produced by vascular endothelium and modulates smooth muscle Ca²⁺ channels. *J Hypertens Suppl.* 1988;6(4):S188-91.
9. Barden AE, Herbison CE, Beilin LJ, Michael CA, Walters BN, Van Bockxmeer FM. Association between the endothelin-1 gene Lys198Asn polymorphism blood pressure and plasma endothelin-1 levels in normal and pre-eclamptic pregnancy. *J Hypertens.* 2001;19(10):1775-82.
10. Asai T, Ohkubo T, Katsuya T, Higaki J, Fu Y, Fukuda M, et al. Endothelin-1 gene variant associates with blood pressure in obese Japanese subjects: the Ohasama Study. *Hypertension.* 2001;38(6):1321-4.
11. Treiber FA, Barbeau P, Harshfield G, Kang HS, Pollock DM, Pollock JS, et al. Endothelin-1 gene Lys198Asn polymorphism and blood pressure reactivity. *Hypertension.* 2003;42(4):494-9. doi: 10.1161/01.HYP.0000091266.41333.15.
12. Tanaka C, Kamide K, Takiuchi S, Kawano Y, Miyata T. Evaluation of the Lys198Asn and -134delA genetic polymorphisms of the endothelin-1 gene. *Hypertens Res.* 2004;27(5):367-71.
13. Wiltshire S, Powell BL, Jennens M, McCaskie PA, Carter KW, Palmer LJ, et al. Investigating the association between K198N coding polymorphism in EDN1 and hypertension, lipoprotein levels, the metabolic syndrome and cardiovascular disease. *Hum Genet.* 2008;123(3):307-13. doi: 10.1007/s00439-008-0481-0.
14. Maixnerova D, Merta M, Reiterova J, Stekrova J, Rysava R, Obeidova H, et al. The influence of three endothelin-1 polymorphisms on the progression of IgA nephropathy. *Folia Biol (Praha).* 2007;53(1):27-32.
15. Reiterova J, Merta M, Stekrova J, Tesar V, Kmentova D, Rihova Z, et al. The influence of the endothelin-converting enzyme-1 gene polymorphism on the progression of autosomal dominant polycystic kidney disease. *Ren Fail.* 2006;28(1):21-4.
16. Yang F, Lai X, Deng L, Liu X, Li J, Zeng S, et al. Association of endothelin-1 gene polymorphisms with the clinical phenotype in primary nephrotic syndrome of children. *Life Sci.* 2014;118(2):446-50. doi: 10.1016/j.lfs.2014.04.010
17. Hashemi M, Sadeghi-Bojd S, Rahmania K, Eskandari-Nasab E. Association between NPHS1 and NPHS2 gene variants and nephrotic syndrome in children. *Iran J Kidney Dis.* 2015;9(1):25-30.
18. Hashemi M, Hanafi Bojd H, Eskandari Nasab E, Bahari A, Hashemzahi NA, Shafieipour S, et al. association of adiponectin rs1501299 and rs266729 gene polymorphisms with nonalcoholic fatty liver disease. *Hepat Mon.* 2013;13(5):e9527. doi: 10.5812/hepatmon.9527.
19. Hashemi M, Moazeni-Roodi A, Bahari A, Taheri M. A tetra-primer amplification refractory mutation system-polymerase chain reaction for the detection of rs8099917 IL28B genotype. *Nucleosides Nucleotides Nucleic Acids.* 2012;31(1):55-60. doi: 10.1080/15257770.2011.643846
20. Pinto-Sietsma SJ, Herrmann SM, Schmidt-Petersen K, Niu T, Hillege HL, Janssen WM, et al. Role of the endothelin-1 gene locus for renal impairment in the general nondiabetic population. *J Am Soc Nephrol.* 2003;14(10):2596-602.
21. Albertoni Borghese MF, Ortiz MC, Balonga S, Moreira Szokalo R, Majowicz MP. The role of endothelin system in renal structure and function during the postnatal development of the rat kidney. *PLoS One.* 2016;11(2):e0148866. doi: 10.1371/journal.pone.0148866.
22. Duan SB, Liu FY, Luo JA, Peng YM. Assessment of urinary endothelin-1 and nitric oxide levels and their relationship with clinical and pathologic types in primary glomerulonephritis. *Yonsei Med J.* 1999;40(5):425-9. doi: 10.3349/ymj.1999.40.5.425.
23. Vlachojannis JG, Tsakas S, Petropoulou C, Goumenos DS, Alexandri S. Endothelin-1 in the kidney and urine of patients with glomerular disease and proteinuria. *Clin Nephrol.* 2002;58(5):337-43.
24. Cottone S, Mule G, Guarneri M, Palermo A, Lorito MC, Riccobene R, et al. Endothelin-1 and F2-isoprostane relate to and predict renal dysfunction in hypertensive patients. *Nephrol Dial Transplant.* 2009;24(2):497-503. doi: 10.1093/ndt/gfn489.
25. Dhaun N, Lilitkarntakul P, Macintyre IM, Muilwijk E, Johnston NR, Kluth DC, et al. Urinary endothelin-1 in chronic kidney disease and as a marker of disease activity in lupus nephritis. *Am J Physiol Renal Physiol.* 2009;296(6):F1477-83. doi: 10.1152/ajprenal.90713.2008.
26. Kohan DE. Endothelins in the kidney: physiology and pathophysiology. *Am J Kidney Dis.* 1993;22(4):493-510.
27. Kohan DE, Inscho EW, Wesson D, Pollock DM. Physiology of endothelin and the kidney. *Compr Physiol.* 2011;1(2):883-919. doi: 10.1002/cphy.c100039.
28. Hua H, Munk S and Whiteside CI. Endothelin-1 activates mesangial cell ERK1/2 via EGF-receptor

- transactivation and caveolin-1 interaction. *Am J Physiol Renal Physiol.* 2003;284(2):F303-12. doi: 10.1152/ajprenal.00127.2002.
29. Ruiz-Ortega M, Gomez-Garre D, Alcazar R, Palacios I, Bustos C, Gonzalez S, et al. Involvement of angiotensin II and endothelin in matrix protein production and renal sclerosis. *J Hypertens Suppl.* 1994;12(4):S51-8.
 30. Murer L, Zacchello G, Basso G, Scarpa A, Montini G, Chiozza ML, et al. Immunohistochemical distribution of endothelin in biopsies of pediatric nephrotic syndrome. *Am J Nephrol.* 1994;14(3):157-61.
 31. Orisio S, Benigni A, Bruzzi I, Corna D, Perico N, Zoja C, et al. Renal endothelin gene expression is increased in remnant kidney and correlates with disease progression. *Kidney Int.* 1993;43(2):354-8.
 32. Roccatello D, Mosso R, Ferro M, Polloni R, De Filippi PG, Quattrocchio G, et al. Urinary endothelin in glomerulonephritis patients with normal renal function. *Clin Nephrol.* 1994;41(6):323-30.

Copyright © 2017 The Author(s); Published by Society of Diabetic Nephropathy Prevention. This is an open-access article distributed under the terms of the Creative Commons Attribution License (<http://creativecommons.org/licenses/by/4.0>), which permits unrestricted use, distribution, and reproduction in any medium, provided the original work is properly cited.