

Article

The Risk of Recurrence in Endometrial Cancer Patients with Low-Volume Metastasis in the Sentinel Lymph Nodes: A Retrospective Multi-Institutional Study

Alessandro Buda ^{1,2,3,*} , Cristiana Paniga ^{1,2}, Salih Taskin ⁴, Michael Mueller ⁵, Ignacio Zapardiel ⁶ , Francesco Fanfani ^{7,8}, Andrea Puppo ⁹ , Jvan Casarin ¹⁰, Andrea Papadia ^{11,12}, Elena De Ponti ¹³, Tommaso Grassi ^{1,2} , Jessica Mauro ³ , Hasan Turan ¹⁴ , Dogan Vatanserver ¹⁵, Mete Gungor ¹⁶, Firat Ortay ⁴ , Sara Imboden ⁵, Virginia Garcia-Pineda ⁶ , Stefan Mohr ⁵, Franziska Siegenthaler ⁵ , Stefania Perotto ³, Fabio Landoni ^{1,2}, Fabio Ghezzi ¹⁰ , Giovanni Scambia ^{7,8}, Cagatay Taskiran ¹⁵ and Robert Fruscio ^{1,2} 

- ¹ Department of Medicine and Surgery, University of Milano-Bicocca, 20900 Monza, Italy
 - ² Clinic of Obstetrics and Gynecology, IRCCS San Gerardo, 20900 Monza, Italy
 - ³ Division of Gynecologic Oncology, Ospedale Michele e Pietro Ferrero, 12060 Verduno, Italy
 - ⁴ Department of Obstetrics and Gynecology, School of Medicine, Ankara University, 06620 Ankara, Turkey
 - ⁵ Inselspital, University Hospital of Bern, University of Bern, 3010 Bern, Switzerland
 - ⁶ Gynecologic Oncology Unit, La Paz University Hospital, 28046 Madrid, Spain
 - ⁷ Department of Woman and Child Health and Public Health, Division of Gynecologic Oncology, Fondazione Policlinico Universitario A. Gemelli IRCCS, 00168 Rome, Italy
 - ⁸ Department of Women and Child Health and Public Health, Università Cattolica del Sacro Cuore, 00168 Rome, Italy
 - ⁹ Department of Obstetrics and Gynecology, Ospedale Santa Croce e Carle, 12100 Cuneo, Italy
 - ¹⁰ Department of Obstetrics and Gynecology, 'Filippo Del Ponte' Hospital, University of Insubria, 21100 Varese, Italy
 - ¹¹ Department of Gynecology and Obstetrics, Ente Ospedaliero Cantonale, 6900 Lugano, Switzerland
 - ¹² Faculty of Biomedical Sciences, University of the Italian Switzerland, 6900 Lugano, Switzerland
 - ¹³ Medical Physics Department, Fondazione IRCCS San Gerardo Hospital, 20900 Monza, Italy
 - ¹⁴ Department of Obstetrics and Gynecology, İstanbul Training and Research Hospital, University of Health Sciences, 34766 İstanbul, Turkey
 - ¹⁵ Department of Obstetrics and Gynecology, School of Medicine, Koc University, 34450 İstanbul, Turkey
 - ¹⁶ Department of Obstetrics and Gynecology, School of Medicine, Acibadem University, 34750 İstanbul, Turkey
- * Correspondence: aabuda@aslcn2.it; Tel.: +39-0172-1408057



Citation: Buda, A.; Paniga, C.; Taskin, S.; Mueller, M.; Zapardiel, I.; Fanfani, F.; Puppo, A.; Casarin, J.; Papadia, A.; De Ponti, E.; et al. The Risk of Recurrence in Endometrial Cancer Patients with Low-Volume Metastasis in the Sentinel Lymph Nodes: A Retrospective Multi-Institutional Study. *Cancers* **2023**, *15*, 2052. <https://doi.org/10.3390/cancers15072052>

Academic Editor: Neville F. Hacker

Received: 19 February 2023

Revised: 24 March 2023

Accepted: 27 March 2023

Published: 30 March 2023



Copyright: © 2023 by the authors. Licensee MDPI, Basel, Switzerland. This article is an open access article distributed under the terms and conditions of the Creative Commons Attribution (CC BY) license (<https://creativecommons.org/licenses/by/4.0/>).

Simple Summary: The surgical management of apparent early-stage endometrial cancer is still unclear. Nodal involvement is prognostic, but the role of retroperitoneal staging is still debated. Sentinel node mapping has been introduced and accepted as a valid alternative to full lymphadenectomy. Furthermore, ultrastaging provides a more accurate analysis of the excised lymph nodes by detecting a higher rate of low-volume metastasis. The aim of this study was to evaluate the impact of low-volume metastasis on recurrence-free survival in women with apparent early-stage endometrial cancer in a large retrospective multi-institutional collaboration.

Abstract: The aim of this study was to assess the impact of low-volume metastasis (LVM) on disease-free survival (DFS) in women with apparent early-stage endometrial cancer (EC) who underwent sentinel lymph node (SLN) mapping. Patients with pre-operative early-stage EC were retrospectively collected from an international collaboration including 13 referring institutions. A total of 1428 patients were included in this analysis. One hundred and eighty-six patients (13%) had lymph node involvement. Fifty-nine percent of positive SLN exhibited micrometastases, 26.9% micrometastases, and 14% isolated tumor cells. Seventeen patients with positive lymph nodes did not receive any adjuvant therapy. At a median follow-up of 33.3 months, the disease had recurred in 114 women (8%). Patients with micrometastases in the lymph nodes had a worse prognosis of disease-free survival compared to patients with negative nodes or LVM. The rate of recurrence was significantly higher for women with micrometastases than those with low-volume metastases (HR = 2.61; $p = 0.01$). The administration of adjuvant treatment in patients with LVM, without uterine risk factors, remains a matter of debate and requires further evaluation.

Keywords: endometrial cancer; low-volume metastasis; sentinel lymph node biopsy; ultrastaging; recurrence-free survival

1. Introduction

Endometrial cancer (EC) is the most common gynecological malignancy in developed countries, with 65,950 new cases predicted to occur in 2022 in the United States [1]. The rate of mortality has increased more rapidly than the incidence rate, despite the estimate that almost 67% of women are diagnosed with the disease confined to the uterine body [1,2]. Poor prognosis is associated with advanced-stage disease, high-risk histology such as serous carcinoma, age, grade, depth of myometrial invasion, lymph vascular space invasion, tumor size, and lower uterine segment invasion [3,4]. Surgical staging represents the main step in the treatment. Evaluation of lymphatic nodes status in endometrial cancer is recommended by many Gynecological Oncology Societies because it represents the most important prognostic factor, with implications in disease stage, prognosis, and guidance for adjuvant treatment. The last practice bulletin published by the ACOG committee in 2015, in association with the Society of Gynecologic Oncology, recommended retroperitoneal staging, reporting that “the initial management of endometrial cancer should include comprehensive surgical staging” [5]. However, randomized controlled trials failed to demonstrate the therapeutic role of lymphadenectomy in EC, reporting an increased risk of postoperative morbidity without significant impact on the oncologic outcomes [6,7]. Instead, sentinel lymph node (SLN) biopsy offers an interesting, intermediate compromise for patients with presumed early-stage endometrial cancer [8]. In recent years, several publications have shown that SLN mapping is an effective method for identifying disease in the lymph nodes, reporting high sensitivity, low false-negative rates, as well as good negative predictive values [9–11]. The most recent National Comprehensive Cancer Network (NCCN) and ESGO guidelines [12,13] support SLN mapping as part of the surgical staging of endometrial cancer, providing there is strict adherence to the principles and algorithm of the technique [14]. The surgical SLN algorithm has been proposed to reduce the false-negative rate in women with disease apparently confined to the uterine body.

In the absence of SLN mapping on one or both sides, a side-specific lymphadenectomy should be performed, and any suspicious or enlarged node should be removed regardless of mapping [12,14]. Furthermore, surgeon expertise and attention to technical details are crucial. The SLN biopsy showed a decrease in morbidity compared to complete lymphadenectomy regarding lymphedema and lymphocele formation. Ultrastaging of SLNs showed a higher sensitivity in detecting nodal metastasis, mainly due to low-volume metastasis (LVM) detection. LVM could represent 25% to 63% of all positive SLNs, which means an 8% increase in determining nodal positivity compared to standard pathological staging. However, the therapeutic implications and prognostic value of LVM remain controversial. In addition, the current adjuvant management of these cases is still debated [15,16]. The aim of this study was to evaluate the low-volume metastasis impact on recurrence-free survival in surgically staged women with apparent early-stage endometrial cancer.

2. Materials and Methods

Data were retrospectively collected from 13 institutions across Europe. All patients underwent surgical staging, including total hysterectomy, bilateral salpingo-oophorectomy, and SLN mapping, with or without pelvic lymphadenectomy and aortic lymphadenectomy, between November 2012 and November 2020. Patients with sarcoma or metastatic disease at diagnosis were excluded. Informed consent was obtained from all subjects involved in the study. Ethical review and approval were waived for this study since data were properly anonymized and informed consent was obtained at the time of original data collection. All data were collected and stored in databases by each participating Center. The data required to create the database were extracted from patients’ medical records.

2.1. Sentinel Lymph Node Mapping Protocol

SLN assessment was carried out in all institutions following the Memorial Sloan Kettering algorithm [11]. Intraoperatively, 4 mL of patent blue (methylene blue or isosulfan blue), or indocyanine green (ICG), at a final concentration of 1.25 mg/mL, were injected into the cervix (2 mL for each side, 1 mL superficially and 1 mL deeply). At the beginning of the surgery, all the pelvic areas were carefully inspected, and SLNs were identified by following the colored lymphatic channels.

LVM was defined as isolated tumor cells (ITC: <0.2 mm largest diameter focus of metastatic disease per lymph node) or micrometastases (MM: between 0.2 mm and 2.0 mm focus of metastatic aggregate) in the SLNs. Patients with more than one metastasis, either in the same SLN or in multiple SLNs, were classified based on the diameter of the largest metastasis [14]. Women were divided into 2 subgroups: those with MM and/or ITC and those with macrometastases. Patients who completed nodal staging with pelvic \pm aortic lymphadenectomy were also included upon the discovery of nodal metastasis in non-SLN.

2.2. Statistical Analysis

Qualitative variables were reported with absolute numbers and percentages. Quantitative variables were reported as median and range. Categorical variables were compared using the chi-square test for univariate analysis. A multivariate analysis was carried out using logistic regression. Disease-free survival (DFS) was calculated by using the Kaplan–Meier method and the Mantel–Cox statistical test. The alpha error was set at 5%. All statistical analyses were performed using the STATA software version 14.1 (Stata Corporation, College Station, TX, USA: StataCorp LP).

3. Results

A total of 1428 endometrial cancer patients were retrospectively collected from 13 centers. Table 1 presents the general characteristics of the study population.

Table 1. General characteristics of the study population (N = 1428).

Variables	No. Patients (%)
Age (at surgery), median (IQR)	63 (55–71)
BMI, median (IQR)	28 (24–33)
Unknown	100
Histology	
Endometrioid	1223 (85.6%)
Other histologies	205 (14.4%)
Grade	
Grade 1	558 (39.1%)
Grade 2	541 (37.9%)
Grade 3	310 (21.7%)
Unknown	19 (1.3%)
Myometrial infiltration	
<50%	969 (67.9%)
>50%	456 (31.9%)
Unknown	3 (0.2%)
Cervical stromal invasion	
NO	1268 (88.8%)
YES	91 (6.4%)
Unknown	69 (4.8%)
LVSI	
NO	1043 (73.0%)
YES	310 (21.7%)
Unknown	75 (5.3%)

Table 1. Cont.

FIGO stage final pathology	
IA	877 (61.4%)
IB	282 (19.8%)
II	60 (4.2%)
IIIA	38 (2.7%)
IIIB	6 (0.4%)
IIIC1	113 (7.9%)
IIIC2	46 (3.2%)
IVA	2 (0.1%)
IVB	4 (0.3%)
Surgical approach	
Minimally invasive surgery (MIS + Robotic)	1277 (89.4%)
Open surgery	144 (10.1%)
MIS + open	7 (0.5%)
Dye used	
ICG	1088 (76.2%)
TC99 + blue	72 (5.0%)
Blue alone	186 (13.0%)
ICG + TC99	79 (5.5%)
Other	3 (0.2%)
Mapping	
Bilateral mapping	1126 (78.8%)
Unilateral mapping	261 (18.3%)
No migration	41 (2.9%)
Nr. SLN removed, median (IQR)	2 (2–4)
Pelvic LND	
NO	665 (46.6%)
YES	763 (53.4%)
Aortic LND	
NO	1109 (77.7%)
YES	319 (2.3%)
Tot patients SLN+	186 (13.0%)
N° patients with only SLN+	107 (7.5%)
N° patients with only Non-SLN+	19 (1.3%)
N° patients with both SLN and non-SLN+	60 (4.2%)
Type of nodal metastasis SLN+ and non SLN+	
ITC	26 (14.0%)
Micro-Mets	50 (26.9%)
Macro-Mets	110 (59.1%)
Adjuvant therapy	
NO	814 (57.0%)
YES	603 (42.2%)
Unknown	11 (0.8%)
Recurrence	
NO	1314 (92.0%)
YES	114 (8.0%)

BMI = Body Mass Index; IQR = InterQuartile Range; LVSI = LymphoVascular Space Invasion; FIGO = International Federation of Gynecology and Obstetrics; MIS = Minimally Invasive Surgery; ICG = Indocyanine Green; TC99 = Technetium99; SLN = Sentinel Lymph Node; LND = Lymph Node Dissection; ITC = Isolated Tumor Cells.

The median age at surgery was 63 years (range 55–71), and the median BMI was 28 kg/m² (range 24–33). SLNs were identified using the fluorescent dye Indocyanine Green (ICG) in 76.2% of the patients. Bilateral mapping was achieved in 78.8% of patients, whereas unilateral detection was achieved in 261 patients (18.3%). Overall, 186 patients (13.0%) were shown to have positive lymph nodes at final pathology. Only 19 (1.3%) women had

non-SLN positive with negative SLNs. The median number of SLNs removed was 2 (range 2–4). Positive sentinel lymph nodes were mainly located in the external iliac (38.3%) and obturator (37.2%) regions. Among the 186 patients with positive LNs, 110 (59.1%) positive LNs included macrometastases, 50 (26.9%) micrometastases, and 26 (14.0%) ITC.

In patients with negative lymph nodes, adjuvant therapy was performed in 35.6%, whereas in low-volume metastasis, adjuvant therapy was administered in 84.2% of cases. Moreover, 94.5% of patients with lymph nodes macrometastases underwent adjuvant therapy (Table 2).

Table 2. Baseline characteristics of patients with positive lymph nodes (LNs) (N = 186).

	ITC (N = 26)	Micro-Mets (N = 50)	Macro-Mets (N = 110)	p-Value
Histology				
Endometrioid	19 (73.1%)	41 (82.0%)	78 (70.9%)	0.353
Other histologies	7 (26.9%)	9 (18.0%)	32 (29.1%)	
Grade				
Grade 1	8 (32.0%)	10 (20.4%)	12 (10.9%)	<0.0001
Grade 2	9 (36.0%)	31 (63.3%)	37 (33.6%)	
Grade 3	8 (32.0%)	8 (16.3%)	61 (55.5%)	
Unknown	1	-	-	
Myometrial infiltration				
<50%	16 (61.5%)	16 (32.7%)	25 (22.7%)	0.001
>50%	10 (38.5%)	33 (67.4%)	85 (77.3%)	
Unknown	-	1	-	
Cervical stromal invasion				
NO	24 (92.3%)	40 (83.3%)	90 (82.6%)	0.528
YES	2 (7.7%)	8 (16.7%)	19 (17.4%)	
Unknown	-	2	1	
LVSI				
NO	8 (30.8%)	10 (20.8%)	24 (21.8%)	0.593
YES	18 (69.2%)	38 (79.2%)	86 (78.2%)	
Unknown	-	2	-	
Adjuvant therapy				
none	7 (26.9%)	5 (10.0%)	5 (4.6%)	0.002
EBRT +/- BRT	5 (19.2%)	5 (10.0%)	7 (6.4%)	
RCT	12 (46.2%)	25 (50.0%)	78 (71.6%)	
CT	2 (7.7%)	7 (14.0%)	11 (10.1%)	
Other	0 (0.0%)	8 (16.0%)	8 (7.3%)	
Unknown	-	-	1	
Recurrences				
NO	21 (80.8%)	44 (88.0%)	79 (71.8%)	0.066
YES	5 (19.2%)	6 (12.0%)	31 (28.2%)	

ITC = Isolated Tumor Cells; Mets = metastasis; LVSI = LymphoVascular Space Invasion; SLN = Sentinel Lymph Node; EBRT = external beam radiotherapy; RT = radiotherapy; RCT = chemoradiation; CT = chemotherapy.

Disease-Free Survival Data

At a median follow-up of 33.3 months, 298 women (90.9%) were alive with no evidence of disease. Forty-five women died of disease, and forty-nine (3.4%) are alive with disease. Overall, 114 patients (8%) relapsed: 5.9% of women with negative nodes (75), 28.2% of patients with macrometastases (31), and 14.5% of women with LVM (11).

Eight patients with macrometastases showed multiple sites of recurrence (26%), and six had a distant relapse (19%). Among patients with micrometastases and/or ITC, local pelvic, nodal, and multiple sites recurrences were 3 (27%), 3 (27%), and 3 (27%), respectively. A complete pelvic lymphadenectomy did not seem to affect the recurrence rate

($p = 0.573$). The 3-year DFS of women with negative lymph nodes, low-volume metastasis, and macrometastases was 90.6%, 84.3%, and 58.5% ($p < 0.0001$), respectively.

The Cox regression multivariate analysis showed that only the presence of LVSI was associated with recurrence. In addition, neither the type of nodal metastasis nor the administration of adjuvant therapy was statistically significant for the risk of recurrence (Table 3).

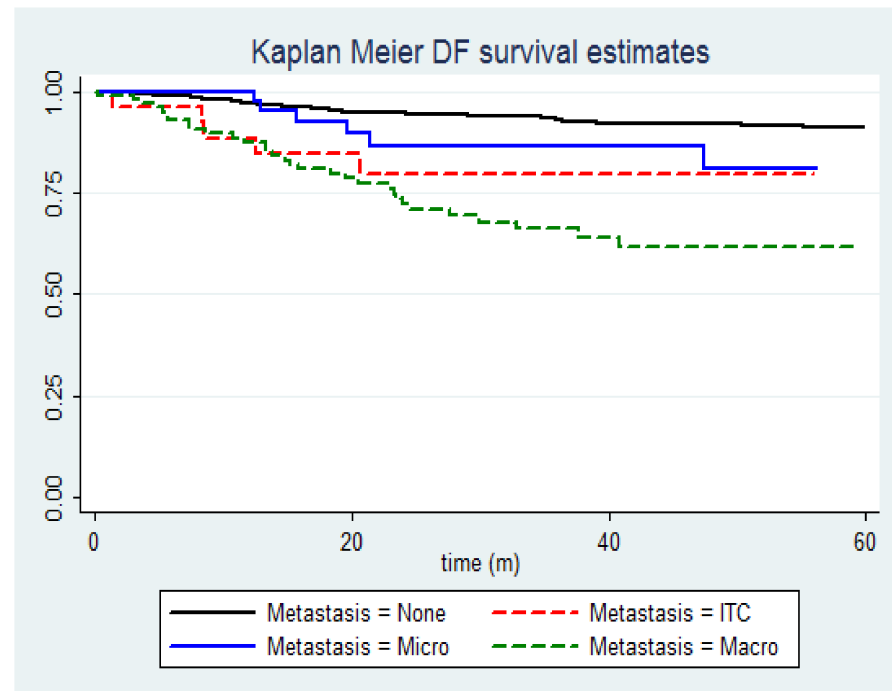


Figure 1. Kaplan–Meier plot of disease-free survival by the nodal status of lymph nodes. (N = 1428) Group 1 (black): negative; Group 2 (red dashed): isolated tumor cells; Group 3 (blue): micrometastases; Group 4 (green dashed): macrometastases.

Table 3. Univariate and multivariate analysis on the risk of recurrence.

	Univariate Analysis		Multivariate Analysis	
	OR (95% IC)	<i>p</i> -Value	OR (95% IC)	<i>p</i> -Value
Age at surgery	1.04 (1.02–1.06)	<0.0001	1.03 (1.00–1.08)	0.085
Grade	2.72 (2.08–357)	<0.0001	1.21 (0.64–2.28)	0.560
LVSI	5.50 (3.69–8.19)	<0.0001	7.93 (1.74–36.07)	0.007
Histology	3.43 (2.25–5.24)	<0.0001	2.16 (0.90–5.21)	0.086
Nodal status (ITC vs. Micro-Mets vs. Macro-Mets)	1.58 (0.93–2.68)	0.094	1.56 (0.86–2.83)	0.142
Adjuvant therapy	5.70 (3.58–9.06)	<0.0001	4.20 (0.46–38.19)	0.203

OR = odds ratio; IC = interval of confidence; LVSI = Lympho-Vascular Space Invasion; ITC = Isolated Tumor Cells; Mets = metastasis. The plots of the cumulative proportion of patients with disease-free survival showed that the recurrence rate was significantly higher for patients with macrometastases (HR = 2.51; $p < 0.0001$) compared to patients with LVM and negative nodes (Figure 1).

However, women with LVM showed a higher risk of recurrence when compared with patients with negative lymph nodes (HR = 2.34; $p = 0.009$). Moreover, in the subgroup of 185 women with positive lymph nodes, the 3-year recurrence-free survival was statistically significantly lower for women with macrometastases compared to patients with low-volume metastasis (HR = 2.61; $p = 0.01$).

4. Discussion

In this large retrospective multicenter study of patients with apparent early-stage endometrial cancer, we observed that women with nodal involvement had a worse prognosis of disease-free survival compared to patients with negative lymph nodes. Moreover, among women with nodal involvement, those with macrometastases showed a higher risk of recurrence compared to women with LVM, regardless of receiving adjuvant therapy. In patients with positive lymph nodes, the uterine risk factors significantly associated with recurrence were grade 3 disease and myometrial infiltration greater than 50%.

In the multivariate analysis, only the presence of LVSI was significantly associated with the risk of recurrence.

To date, in the absence of a large amount of prospective data, the evidence supports the treatment of women with micrometastases, whereas patients with isolated tumor cells with no uterine risk factors, such as endometrioid grade 1 disease and neither LVSI nor uterine serosal invasion, can be spared from adjuvant therapy [15,16].

A recent meta-analysis by Gómez-Hidalgo et al. suggests a higher relative risk of recurrence in women with low-volume metastasis in the sentinel lymph nodes, independently from adding adjuvant therapy [17].

Similar to our results, Garcia-Pineda et al. [18] in their study included 230 patients that underwent nodal staging for early-stage endometrial cancer and reported a worsened progression-free survival for women with macrometastases compared to patients with isolated tumor cells and micrometastases in the SLNS ($p < 0.05$). In a retrospective study of 800 patients with endometrial cancer, Clair et al. [19] reported similar results for 3-year PFS for both negative node patients and low-volume metastasis (90% and 86%, respectively) and 71% for macrometastases ($p < 0.001$). The authors concluded that administering adjuvant therapy improves the prognosis of women with low-volume metastasis compared to patients with macrometastases.

Plante et al. also showed that the 3-year progression-free survival of women with ITC (95.5%) or micrometastases (85.5%) was similar to node-negative patients (87.6%). However, the result was statistically different when the LVM subgroup was compared to patients with macrometastases (58.5%). Although 68% of patients with isolated tumor cells received adjuvant treatment, the authors concluded that women with isolated tumor cells should be treated based on uterine risk factors [20].

A recent study by Backes et al. [21] reported that in 175 women with stage I–II endometrioid endometrial cancer, the presence of ITC in the SLNs did not affect the recurrence, regardless of the administration of adjuvant therapy. Similarly, Ghoniem et al., in a recent multi-institutional retrospective study including 247 patients with low-volume metastasis, showed that patients with ITC and grade 1 endometrioid disease without LVSI or serosal invasion had a favorable prognosis regardless of the administration of adjuvant therapy [16].

Sentinel node mapping has been adopted and accepted worldwide for nodal evaluation in women with low-grade endometrial cancer [12]. However, a recent review of the literature conducted by How et al. [22], they reported that SLN biopsy generated similar detection rates and accuracy as seen in low-grade disease. Although limited in retrospective study design and short-term follow-up, the studies included in that review have not demonstrated inferior survival outcomes of SLN mapping compared to traditional lymphadenectomy in high-grade endometrial cancer. Notwithstanding, the authors underlined the importance of obtaining sufficient operator experience with at least 30 cases and following the SLN surgical algorithm, which remains essential to preserving diagnostic accuracy.

In our study, the disease-free survival of the 79 women with LVM was not statistically different from those with negative nodes.

A recent retrospective study by Ignatov et al. [23] included 2392 patients with endometrial cancer with and without micrometastases. The authors showed that, with adjuvant therapy, the disease-free survival in the cohort of patients with micrometastases

was reduced compared to disease-free survival in the node-negative cohort even after adjustment for age at diagnosis, myometrial invasion, histological grade, and the type and performance status.

To date, evidence from the majority of the studies suggests that adjuvant treatments in the presence of isolated tumor cells, any proposal of adjuvant treatments should be related to the presence of high-risk uterine factors. In the recent study of Bogani et al. [24], they included 572 patients who underwent hysterectomy with or without SLN biopsy. In the majority of cases, adjuvant therapy was administered based on the presence of uterine risk factors. The authors suggested that nodal evaluation might not be essential for tailoring the need for adjuvant therapy.

The strength of our study is inclusion of a large number of reviewed cases, the extensive experience with SLN staging, the high volume of cases at the participating institutions, and the similar approach to SLN mapping shared by all centers. However, the study has some drawbacks, including the retrospective design and the absence of similar adjuvant strategies amongst the different institutions, which might have influenced the results. Furthermore, the ultrastaging protocols for detecting low-volume metastasis vary among institutions globally; therefore, the SLN cannot be considered a standardized procedure in the absence of an international consensus for guidelines on an ultrastaging protocol [25]. As a result, the rates of nodal involvement seen in available studies in the literature are difficult to compare [26,27].

5. Conclusions

This study is one of the largest multi-institutional retrospective studies in women with apparent early-stage endometrial cancer.

We confirmed that macrometastases in the lymph nodes indicate a worse prognosis. However, patients with LVM also showed a higher risk of relapse compared to node-negative patients, regardless of the administration of adjuvant therapy.

The results of the ongoing SELECT prospective study, evaluating the impact of exclusive sentinel lymph node mapping on the intermediate risk of endometrioid endometrial cancer with no adjuvant therapy [28], and the ENDO-3 randomized trial [29] comparing simple hysterectomy alone with a hysterectomy and sentinel node mapping, are forthcoming. Our study confirms that women with positive nodes showed a higher risk of recurrence.

Furthermore, a higher risk was observed in women with macrometastases.

Integrating the molecular profile of high-risk endometrial cancer will probably provide new evidence to better help clinicians in choosing a more personalized adjuvant approach for every patient diagnosed with low-volume metastasis [30].

Author Contributions: Conceptualization: A.B., R.F. and C.P.; Methodology: A.B., E.D.P. and R.F.; Project administration: A.B.; Supervision: R.F., I.Z., F.F., M.M. and G.S.; writing—original draft: A.B., R.F. and J.M.; writing—review and editing: all authors. All authors have read and agreed to the published version of the manuscript.

Funding: This research received no external funding.

Institutional Review Board Statement: The study was conducted in accordance with the Declaration of Helsinki and approved by the Institutional Review Board of Michele e Pietro Ferrero Hospital (2021.0000775 of 21 December 2021).

Informed Consent Statement: Informed consent was obtained from all subjects involved in the study. Written informed consent was obtained from the patient(s) to publish this paper.

Data Availability Statement: Data are archived and available at the Medical Physics Foundation IRCCS San Gerardo Hospital, Monza, Italy. Elena De Ponti, froze the database and performed the data analysis.

Acknowledgments: All authors thank Patricia Ann Sawchuk for her contribution to language editing and proofreading. Moreover, we thank the “Fondazione Nuovo Ospedale Alba-Bra Onlus” for the logistic support.

Conflicts of Interest: The authors declare no conflict of interest.

References

1. Siegel, R.L.; Miller, K.D.; Fuchs, H.E.; Jemal, A. Cancer Statistics, 2021. *CA Cancer J. Clin.* **2021**, *71*, 7–33. [[CrossRef](#)] [[PubMed](#)]
2. Ueda, S.M.; Kapp, D.S.; Cheung, M.K.; Shin, J.Y.; Osann, K.; Usain, A.; Teng, N.N.; Berek, J.S.; Chan, J.K. Trends in demographic and clinical characteristics in women diagnosed with corpus cancer and their potential impact on the increasing number of deaths. *Am. J. Obstet. Gynecol.* **2008**, *198*, 218.e1–218.e6. [[CrossRef](#)] [[PubMed](#)]
3. Benedetti Panici, P.; Basile, S.; Salerno, M.G.; Di Donato, V.; Marchetti, C.; Perniola, G.; Palagiano, A.; Perutelli, A.; Maneschi, F.; Lissoni, A.A.; et al. Secondary analyses from a randomized clinical trial: Age as the key prognostic factor in endometrial carcinoma. *Am. J. Obstet. Gynecol.* **2014**, *210*, 363.e1–363.e10. [[CrossRef](#)]
4. Doll, K.M.; Tseng, J.; Denslow, S.A.; Fader, A.N.; Gehrig, P.A. High-grade endometrial cancer: Revisiting the impact of tumor size and location on outcomes. *Gynecol. Oncol.* **2014**, *132*, 44–49. [[CrossRef](#)]
5. American College of Obstetricians and Gynecologists. Practice Bulletin No. 149: Endometrial cancer. *Obstet. Gynecol.* **2015**, *125*, 1006–1026. [[CrossRef](#)] [[PubMed](#)]
6. Benedetti Panici, P.; Basile, S.; Maneschi, F.; Alberto Lissoni, A.; Signorelli, M.; Scambia, G.; Angioli, R.; Tateo, S.; Mangili, G.; Katsaros, D.; et al. Systematic pelvic lymphadenectomy vs. no lymphadenectomy in early-stage endometrial carcinoma: Randomized clinical trial. *J. Natl. Cancer Inst.* **2008**, *3*, 1707–1716. [[CrossRef](#)]
7. ASTEC study group; Kitchener, H.; Swart, A.M.; Qian, Q.; Amos, C.; Parmar, M.K. Efficacy of systematic pelvic lymphadenectomy in endometrial cancer (MRC ASTEC trial): A randomised study. *Lancet* **2009**, *373*, 125–136. [[CrossRef](#)]
8. Abu-Rustum, N.R. Sentinel lymph node mapping for endometrial cancer: A modern approach to surgical staging. *J. Natl. Compr. Cancer Netw.* **2014**, *12*, 288–297. [[CrossRef](#)]
9. Rossi, E.C.; Kowalski, L.D.; Scalici, J.; Cantrell, L.; Schuler, K.; Hanna, R.K.; Method, M.; Ade, M.; Ivanova, A.; Boggess, J.F. A comparison of sentinel lymph node biopsy to lymphadenectomy for endometrial cancer staging (FIRES trial): A multicentre, prospective, cohort study. *Lancet Oncol.* **2017**, *18*, 384–392. [[CrossRef](#)]
10. Daraï, E.; Dubernard, G.; Bats, A.S.; Heitz, D.; Mathevet, P.; Marret, H.; Querleu, D.; Golfier, F.; Leblanc, E.; Rouzier, R.; et al. Sentinel node biopsy for the management of early stage endometrial cancer: Long-term results of the SENTI-ENDO study. *Gynecol. Oncol.* **2015**, *136*, 54–59. [[CrossRef](#)]
11. Frumovitz, M.; Plante, M.; Lee, P.S.; Sandadi, S.; Lilja, J.F.; Escobar, P.F.; Gien, L.T.; Urbauer, D.L.; Abu-Rustum, N.R. Near-infrared fluorescence for detection of sentinel lymph nodes in women with cervical and uterine cancers (FILM): A randomised, phase 3, multicentre, non-inferiority trial. *Lancet Oncol.* **2018**, *19*, 1394–1403. [[CrossRef](#)]
12. Abu-Rustum, N.; Yashar, C.; Arend, R.; Barber, E.; Bradley, K.; Brooks, R.; Campos, S.M.; Chino, J.; Chon, H.S.; Chu, C.; et al. Uterine Neoplasms, Version 1.2023, NCCN clinical practice guidelines in oncology. *J. Natl. Compr. Cancer Netw.* **2023**, *21*, 181–209. [[CrossRef](#)]
13. Concin, N.; Matias-Guiu, X.; Vergote, I.; Cibula, D.; Mirza, M.R.; Marnitz, S.; Ledermann, J.; Bosse, T.; Chargari, C.; Fagotti, A.; et al. ESGO/ESTRO/ESP guidelines for the management of patients with endometrial carcinoma. *Int. J. Gynecol. Cancer* **2021**, *31*, 12–39. [[CrossRef](#)]
14. Barlin, J.N.; Khoury-Collado, F.; Kim, C.H.; Leitao, M.M., Jr.; Chi, D.S.; Sonoda, Y.; Alektiar, K.; DeLair, D.F.; Barakat, R.R.; Abu-Rustum, N.R. The importance of applying a sentinel lymph node mapping algorithm in endometrial cancer staging: Beyond removal of blue nodes. *Gynecol. Oncol.* **2012**, *125*, 531–535. [[CrossRef](#)]
15. Bogani, G.; Mariani, A.; Paolini, B.; Ditto, A.; Raspagliesi, F. Low-volume disease in endometrial cancer: The role of micrometastasis and isolated tumor cells. *Gynecol. Oncol.* **2019**, *153*, 670–675. [[CrossRef](#)]
16. Ghoniem, K.; Larish, A.M.; Dinoi, G.; Zhou, X.C.; Alhill, M.; Wallace, S.; Wohlmuth, C.; Baiocchi, G.; Tokgozoglu, N.; Raspagliesi, F.; et al. Oncologic outcomes of endometrial cancer in patients with low-volume metastasis in the sentinel lymph nodes: An international multi-institutional study. *Gynecol. Oncol.* **2021**, *162*, 590–598. [[CrossRef](#)]
17. Gómez-Hidalgo, N.R.; Ramirez, P.T.; Ngo, B.; Pérez-Hoyos, S.; Coreas, N.; Sanchez-Iglesias, J.L.; Cabrera, S.; Franco, S.; Benavente, A.P.; Gil-Moreno, A. Oncologic impact of micrometastases or isolated tumor cells in sentinel lymph nodes of patients with endometrial cancer: A meta-analysis. *Clin. Transl. Oncol.* **2020**, *22*, 1272–1279. [[CrossRef](#)]
18. Pineda, V.; Hernández Gutiérrez, A.; Gracia Segovia, M.; Siegrist Ridruejo, J.; Diestro Tejada, M.D.; Zapardiel, I. Low-Volume Nodal Metastasis in Endometrial Cancer: Risk Factors and Prognostic Significance. *J. Clin. Med.* **2020**, *9*, 1999. [[CrossRef](#)]
19. St Clair, C.M.; Eriksson, A.G.; Ducie, J.A.; Jewell, E.L.; Alektiar, K.M.; Hensley, M.L.; Soslow, R.A.; Abu-Rustum, N.R.; Leitao, M.M., Jr. Low-Volume Lymph Node Metastasis Discovered During Sentinel Lymph Node Mapping for Endometrial Carcinoma. *Ann. Surg. Oncol.* **2016**, *23*, 1653–1659. [[CrossRef](#)]
20. Plante, M.; Stanleigh, J.; Renaud, M.C.; Sebastianelli, A.; Grondin, K.; Grégoire, J. Isolated tumor cells identified by sentinel lymph node mapping in endometrial cancer: Does adjuvant treatment matter? *Gynecol. Oncol.* **2017**, *146*, 240–246. [[CrossRef](#)]
21. Backes, F.J.; Felix, A.S.; Plante, M.; Grégoire, J.; Sullivan, S.A.; Rossi, E.C.; Tanner, E.J., 3rd; Stewart, K.I.; Soliman, P.T.; Holloway, R.W.; et al. Sentinel lymph node (SLN) isolated tumor cells (ITCs) in otherwise stage I/II endometrioid endometrial cancer: To treat or not to treat? *Gynecol. Oncol.* **2021**, *161*, 347–352. [[CrossRef](#)] [[PubMed](#)]
22. How, A.J.; Frumovitz, M.; Stewart, K.I.; Soliman, P.T. Lymphatic mapping and sentinel node biopsy in high-grade uterine cancers. *Curr. Oncol. Rep.* **2022**, *24*, 1521–1529. [[CrossRef](#)] [[PubMed](#)]

23. Ignatov, A.; Lebius, C.; Ignatov, T.; Ivros, S.; Knueppel, R.; Papatthemelis, T.; Ortmann, O.; Eggemann, H. Lymph node micrometastases and outcome of endometrial cancer. *Gynecol. Oncol.* **2019**, *154*, 475–479. [[CrossRef](#)] [[PubMed](#)]
24. Bogani, G.; Di Donato, V.; Papadia, A.; Buda, A.; Casarin, J.; Multinu, F.; Plotti, F.; Gasparri, M.L.; Pinelli, C.; Perrone, A.M.; et al. Hysterectomy alone vs. hysterectomy plus sentinel node mapping in endometrial cancer: Perioperative and long-term results from a propensity-score based study. *Eur. J. Surg. Oncol.* **2023**, *in press*. [[CrossRef](#)] [[PubMed](#)]
25. Weaver, D.L. Pathology evaluation of sentinel lymph nodes in breast cancer: Protocol recommendations and rationale. *Mod. Pathol.* **2010**, *23* (Suppl. S2), S26–S32. [[CrossRef](#)]
26. Euscher, E.; Sui, D.; Soliman, P.; Westin, S.; Ramalingam, P.; Bassett, R.; Malpica, A. Ultrastaging of Sentinel Lymph Nodes in Endometrial Carcinoma According to Use of 2 Different Methods. *Int. J. Gynecol. Pathol.* **2018**, *37*, 242–251. [[CrossRef](#)]
27. Malpica, A.; Euscher, E.D.; Hecht, J.L.; Ali-Fehmi, R.; Quick, C.M.; Singh, N.; Horn, L.C.; Alvarado-Cabrero, I.; Matias-Guiu, X.; Hirschowitz, L.; et al. Endometrial Carcinoma, Grossing and Processing Issues: Recommendations of the International Society of Gynecologic Pathologists. *Int. J. Gynecol. Pathol.* **2019**, *38* (Suppl. S1), S9–S24. [[CrossRef](#)]
28. Grassi, T.; Mariani, A.; Cibula, D.; Soliman, P.T.; Suman, V.J.; Weaver, A.L.; Pedra Nobre, S.; Weigelt, B.; Glaser, G.E.; Cappuccio, S.; et al. A prospective multicenter international single-arm observational study on the oncological safety of the sentinel lymph node algorithm in stage I intermediate-risk endometrial cancer (SELECT, SEntinel Lymph node Endometrial Cancer Trial). *Int. J. Gynecol. Cancer* **2020**, *30*, 1627–1632. [[CrossRef](#)]
29. Obermair, A.; Nicklin, J.; Gebiski, V.; Hayes, S.C.; Graves, N.; Mileshkin, L.; Lin, M.Y.; Beale, P.; Baxter, E.; Robledo, K.; et al. A phase III randomized clinical trial comparing sentinel node biopsy with no retroperitoneal node dissection in apparent early-stage endometrial cancer—ENDO-3: ANZGOG trial 1911/2020. *Int. J. Gynecol. Cancer* **2021**, *31*, 1595–1601. [[CrossRef](#)]
30. Sullivan, S.A.; Hawkins, G.; Zhao, X.; Jo, H.; Hayes, N.; Deng, X.; Bandyopadhyay, D.; Bae-Jump, V.L.; Rossi, E.C. Genomic profiling of endometrial cancer and relationship with volume of endometrial cancer disease spread. *Gynecol. Oncol. Rep.* **2021**, *36*, 100720. [[CrossRef](#)]

Disclaimer/Publisher’s Note: The statements, opinions and data contained in all publications are solely those of the individual author(s) and contributor(s) and not of MDPI and/or the editor(s). MDPI and/or the editor(s) disclaim responsibility for any injury to people or property resulting from any ideas, methods, instructions or products referred to in the content.