

Sex Dimorphism in the Myocardial Response to Aortic Stenosis



Thomas A. Treibel, PhD,^{a,b} Rebecca Kozor, PhD,^{a,c} Marianna Fontana, PhD,^b Camilla Torlasco, MD,^a Patricia Reant, MD, PhD,^d Sveeta Badiani, MBBS,^a Maria Espinoza, MD,^a John Yap, MD,^a Javier Diez, PhD,^{e,f} Alun D. Hughes, PhD,^b Guy Lloyd, MD,^{a,b} James C. Moon, MD^{a,b}

ABSTRACT

OBJECTIVES The goal of this study was to explore sex differences in myocardial remodeling in aortic stenosis (AS) by using echocardiography, cardiac magnetic resonance (CMR), and biomarkers.

BACKGROUND AS is a disease of both valve and left ventricle (LV). Sex differences in LV remodeling are reported in AS and may play a role in disease phenotyping.

METHODS This study was a prospective assessment of patients awaiting surgical valve replacement for severe AS using echocardiography, the 6-min walking test, biomarkers (high-sensitivity troponin T and N-terminal pro-brain natriuretic peptide), and CMR with late gadolinium enhancement and extracellular volume fraction, which dichotomizes the myocardium into matrix and cell volumes. LV remodeling was categorized into normal geometry, concentric remodeling, concentric hypertrophy, and eccentric hypertrophy.

RESULTS In 168 patients (age 70 ± 10 years, 55% male, indexed aortic valve area 0.40 ± 0.13 cm²/m², mean gradient 47 ± 4 mm Hg), no sex or age differences in AS severity or functional capacity (6-min walking test) were found. CMR captured sex dimorphism in LV remodeling not apparent by using 2-dimensional echocardiography. Normal geometry (82% female) and concentric remodeling (60% female) dominated in women; concentric hypertrophy (71% male) and eccentric hypertrophy (76% male) dominated in men. Men also had more evidence of LV decompensation (pleural effusions), lower left ventricular ejection fraction ($67 \pm 16\%$ vs. $74 \pm 13\%$; $p < 0.001$), and higher levels of N-terminal pro-brain natriuretic peptide ($p = 0.04$) and high-sensitivity troponin T ($p = 0.01$). Myocardial fibrosis was higher in men, with higher focal fibrosis (late gadolinium enhancement 16.5 ± 11.2 g vs. 10.5 ± 8.9 g; $p < 0.001$) and extracellular expansion (matrix volume 28.5 ± 8.8 ml/m² vs. 21.4 ± 6.3 ml/m²; $p < 0.001$).

CONCLUSIONS CMR revealed sex differences in associations between AS and myocardial remodeling not evident from echocardiography. Given equal valve severity, the myocardial response to AS seems more maladaptive in men than previously reported. (Regression of Myocardial Fibrosis After Aortic Valve Replacement [RELIEF-AS]; [NCT02174471](https://doi.org/10.1016/j.jcmg.2017.08.025)) (J Am Coll Cardiol Img 2018;11:962-73) © 2018 The Authors. Published by Elsevier on behalf of the American College of Cardiology Foundation. This is an open access article under the CC BY-NC-ND license (<http://creativecommons.org/licenses/by-nc-nd/4.0/>).

From the ^aBarts Heart Centre, St Bartholomew's Hospital, London, United Kingdom; ^bInstitute of Cardiovascular Science, University College London, London, United Kingdom; ^cSydney Medical School, University of Sydney, Sydney, Australia; ^dUniversity Hospital Center of Bordeaux, and University of Bordeaux, Bordeaux, France; ^eProgram of Cardiovascular Diseases, Center for Applied Medical Research, University of Navarra, Pamplona, Spain; and ^fCIBERCV, Carlos III Institute of Health, Madrid, Spain. This research was undertaken at University College London Hospital, which received a proportion of funding from the UK Department of Health National Institute for Health Research Biomedical Research Centers funding scheme. Dr. Treibel was supported by Doctoral Research Fellowships from the National Institute for Health Research, United Kingdom (NIHR-DRF-2013-06-102). Dr. Fontana was supported by a Clinical Research Training Fellowship from the British Heart Foundation (grants FS/12/56/29723). Dr. Moon has received grant funding from GlaxoSmithKline. All other authors have reported that they have no relationships relevant to the contents of this paper to disclose.

Manuscript received April 21, 2017; revised manuscript received July 16, 2017, accepted August 15, 2017.

In aortic stenosis (AS), narrowing of the aortic valve is the hallmark of disease progression, but symptom onset and patient outcome are also determined by the left ventricular (LV) response to increasing afterload (1), which remodels in an attempt to maintain normal wall stress. This scenario is highlighted by the limited performance of markers of valve stenosis in predicting symptom onset (2). In contrast, left ventricular ejection fraction (LVEF), left ventricular hypertrophy (LVH), and myocardial fibrosis have all been shown to predict outcomes in AS (3-10). However, LV remodeling is heterogeneous (11-13). Four main geometric patterns have been defined: normal geometry, concentric remodeling, concentric hypertrophy, and eccentric hypertrophy. These patterns are based on LV mass, cavity size, and the ratio of these 2 factors (14,15). Functionally, the spectrum of LV responses ranges from hypercontractile to “myopathic” states. Echocardiography and cardiac magnetic resonance (CMR) are the gold standards for the assessment of valve severity and LV geometry/function, respectively. CMR is also able to quantify focal myocardial fibrosis (4-8) and extracellular expansion (16-18), whereas blood biomarkers (high sensitivity troponin T [hsTnT] and N-terminal pro-brain natriuretic peptide [NT-proBNP]) reflect whole heart myocyte death and increased wall stress.

SEE PAGE 984

Sex appears to exert an important influence on LV remodeling (11,19,20). Previous research has shown that men are more likely to have higher indexed LV mass, lower LVEF, and increased diastolic myocardial stiffness (21,22), whereas women have more concentric remodeling with higher relative wall thickness and LVEF. To date, however, most studies have relied on echocardiography alone, with only limited combined echocardiography and CMR data available (22). The goal of the present study was to understand the influence of sex on AS remodeling by using all available modalities to investigate patterns of remodeling at macroscopic and tissue levels.

METHODS

This study was a prospective observational cohort analysis of patients with severe, symptomatic AS undergoing aortic valve replacement (AVR) in a single tertiary referral cardiac center, University College London Hospital NHS Trust, between January 2012 and January 2015. The study was approved by the ethical committee of UK National Research Ethics Service (07/H0715/101) and was registered on ClinicalTrials.gov (NCT02174471). The study

conformed to the principles of the Declaration of Helsinki, and all subjects provided written informed consent.

Patients were recruited before preoperative evaluation, which included a comprehensive assessment with clinical history, resting blood pressure, 6-min walk test (23), blood sampling (for hsTnT and NT-proBNP), electrocardiogram, transthoracic 2-dimensional echocardiogram, and CMR (further details are given in the [Online Appendix](#)). Patients met the inclusion criteria if they were >18 years of age with severe AS (≥ 2 of aortic valve area <1 cm², peak pressure gradient >64 mm Hg, mean pressure gradient >40 mm Hg, and aortic valve velocity ratio <0.25) undergoing AVR ± coronary artery bypass grafting. Exclusion criteria were pregnancy/breastfeeding, an estimated glomerular filtration rate <30 ml/min/1.73 m², CMR-incompatible devices, inability to complete the protocol, previous valve surgery, or severe valve disease other than AS. Overall, 48% of patients undergoing surgical AVR for severe AS at our institution during the study period were recruited.

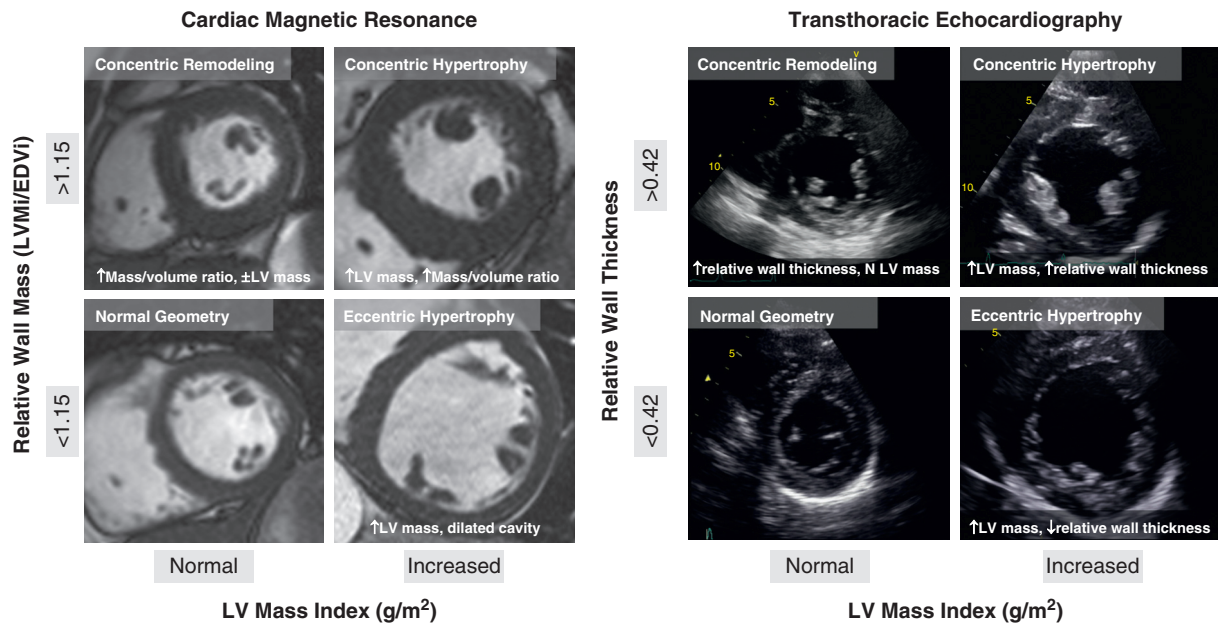
CARDIAC IMAGING. Echocardiography assessed diastolic function and valve area/velocities (with CMR for regurgitant volumes if needed). CMR cine imaging assessed LV structure and function, as well as late gadolinium enhancement (LGE), T1 mapping, and extracellular volume fraction (ECV) for myocardial tissue characterization.

Echocardiography. Clinical transthoracic echocardiography was performed using a GE Vivid E9 system (GE Healthcare, Wauwatosa, Wisconsin) with a 4-MHz transducer, following the guidelines for assessment of AS severity and diastolic function as recommended by the American and European Societies of Echocardiography (24). Parameters of AS severity (energy loss index), myocardial work (myocardial contraction fraction) (25), end-diastolic wall stress (26), and vascular afterload (systemic arterial compliance, systemic vascular resistance, and valvuloarterial impedance) (27) are detailed in the [Online Appendix](#).

CMR. CMR was performed at 1.5-T (Magnetom Avanto, Siemens Medical Solutions, Malvern, Pennsylvania) using a standard clinical scan protocol with LGE imaging and T1 mapping (modified Look-Locker inversion-recovery) before and after bolus gadolinium contrast (0.1 mmol/kg of gadoterate meglumine [gadolinium-DOTA, marketed as Dotarem, Guerbet

ABBREVIATIONS AND ACRONYMS

AS	= aortic stenosis
AVR	= aortic valve replacement
BSA	= body surface area
CMR	= cardiac magnetic resonance
ECV	= extracellular volume fraction
EDVi	= indexed end-diastolic volume
ESVi	= indexed end-systolic volume
hsTnT	= high-sensitivity troponin T
IQR	= interquartile range
LGE	= late gadolinium enhancement
LV	= left ventricle
LVEF	= left ventricular ejection fraction
LVH	= left ventricular hypertrophy
LVmi	= indexed left ventricular mass
NT-proBNP	= N-terminal pro-brain natriuretic peptide

FIGURE 1 Remodeling by Cardiac Magnetic Resonance and Echocardiography

Patients were categorized into 4 patterns of left ventricular (LV) geometric adaption: normal geometry, concentric remodeling, concentric hypertrophy, and eccentric hypertrophy. For cardiac magnetic resonance, categories were defined by using body surface area-indexed LV mass (LVMI), indexed LV end-diastolic volume (EDVi), and mass/volume ratio. For 2-dimensional echocardiography, categories were defined by using body surface area-LVMI, end-diastolic cavity dimension, and relative wall thickness.

S.A., Paris, France)). Post-contrast imaging was performed at 10 min (LGE) and 15 min (T1 mapping). CMR image analysis was performed by using CVI42 software version 5.1.2 [303] (Circle Cardiovascular Imaging, Calgary, Alberta, Canada) by operators blinded to clinical parameters.

LGE was quantified in grams and as a percentage of the LV using a signal intensity threshold of 3 SDs above the mean remote myocardium. ECV was calculated as: $ECV = (1 - \text{hematocrit}) \times [\Delta R1_{\text{myocardium}}] / [\Delta R1_{\text{bloodpool}}]$ (28), where $\Delta R1$ is the difference in relaxation rates pre- and post-contrast. ECV divides the myocardium into its cell and matrix compartments, giving insights into tissue-level pattern of LV remodeling. Total LV matrix and cell volumes were calculated from the product of LV myocardial volume and ECV or $(1 - ECV)$, respectively (Online Appendix).

PATTERNS OF LV REMODELING. Patients with AS were categorized into 4 patterns of LV geometric adaption (Figure 1): normal geometry, concentric remodeling, concentric hypertrophy, and eccentric hypertrophy. For CMR, categories were defined by body surface area (BSA)-indexed left ventricular mass (LVMI), indexed left ventricular end-diastolic volume, and mass/volume ratio (14). For

echocardiography, categories were defined by using BSA-indexed LVMI, end-diastolic cavity dimension, and relative wall thickness, as previously described (15) (Online Appendix).

STATISTICAL ANALYSIS. Statistical analyses were conducted by using SPSS version 22 (IBM SPSS Statistics, IBM Corporation, Armonk, New York). All continuous variables are expressed as mean \pm SD or median (interquartile range [IQR]) for skewed data. Categorical variables are expressed as percentages. Normality was checked by using the Shapiro-Wilk test. Groups were compared by using independent-sample Student *t* tests for normally distributed continuous variables, the Mann-Whitney *U* test for non-normally distributed variables, and the Fisher exact test or a chi-square test for categorical variables. A 2-sided *p* value < 0.05 was considered significant.

RESULTS

STUDY POPULATION. There were 181 patients with severe, symptomatic AS recruited (age 69 ± 10 years; 56% male) representing 48% of all surgical AVRs at the study institution. Thirteen patients were

excluded: claustrophobia (n = 2), hemodynamic instability (n = 1), pseudo-severe AS (n = 1), severe mitral regurgitation (n = 2), and significant myocardial bystander disease (cardiac amyloidosis, n = 6; Fabry disease, n = 1) (29).

Characteristics of the remaining 168 patients (age 70 ± 10 years; 55% male; 70% trileaflet AS) are summarized in Tables 1 and 2. All but 7 patients were symptomatic (96%) with dyspnea (82%), chest pain (32%), and/or syncope (8%). CMR identified pericardial effusions (>5 mm) in 47 patients and pleural effusions (>1 cm) in 36 patients (22 with both).

There were no sex differences in the aortic valve regurgitant fraction (14% vs. 10%; p = 0.10), or mitral valve regurgitant fraction (3% vs. 6%; p = 0.40). Furthermore, there were no sex differences in age, smoking status, diabetes, or hypertension prevalence, although office systolic blood pressure (130 ± 18 mm Hg vs. 137 ± 18 mm Hg; p = 0.01) and glycosylated hemoglobin levels (38% [IQR: 35% to 41%] vs. 42% [IQR: 39% to 46%]; p = 0.003) were higher in women. Coronary artery disease (stenosis >50%) was more prevalent in men (37% vs. 21%; p = 0.03).

AS SEVERITY AND SEX. There were no sex differences in standard echocardiographic parameters of AS severity (valve area, gradient, or velocity ratios) (Table 2). Advanced echocardiographic parameters revealed subtle sex differences in AS severity and vascular load: men had a trend toward lower energy recovery measured by using the energy loss index (0.46 ± 0.17 cm²/m² vs. 0.53 ± 0.30 cm²/m²; p = 0.06) (30) with larger aortic dimensions (6.4 ± 1.7 cm² vs. 4.6 ± 1.6 cm²; p < 0.001). Furthermore, men had lower mean arterial pressure (93 ± 11 mm Hg vs. 97 ± 12 mm Hg; p = 0.02) and systemic vascular resistance (1,167 dyne·s·cm⁻⁵ [IQR, 1,010 to 1,400 dyne·s·cm⁻⁵] vs. 1,338 dyne·s·cm⁻⁵ [IQR: 1,142 to 1,647 dyne·s·cm⁻⁵]; p = 0.001), although global afterload assessed according to valvulo-arterial impedance (p = 0.2) did not differ.

PATTERN OF REMODELING AND SEX. The geometry and function according to CMR (Table 2) differed according to sex. Men had larger LV dimensions, even when indexed (EDVi: 73 ± 23 ml vs. 61 ± 19 ml [p < 0.001]; ESVi: 27 ± 22 g vs. 18 ± 16 g [p = 0.004]) and greater LVMi (98 ± 23 g/m² vs. 75 ± 20 g/m²; p < 0.001) and mass/volume ratio (1.44 ± 0.39 vs. 1.30 ± 0.28; p < 0.001). There were also marked sex differences in remodeling (chi-square test = 34; p < 0.001): normal geometry (82% female) and concentric remodeling (60% female) were predominantly seen in women, whereas concentric

TABLE 1 Baseline Characteristics

	Total (N = 168, 100%)	Men (n = 92, 55%)	Women (n = 76, 45%)	p Value
Age, yrs	70 ± 10	70 ± 10	70 ± 10	0.90
Trileaflet*	118 (100)	61 (66)	57 (76)	0.20
Bicuspid*	49 (100)	31 (34)	18 (24)	0.20
BSA, m ²	1.88 ± 0.21	1.98 ± 0.19	1.76 ± 0.17	<0.001
Comorbidities				
Hypertension, %	77	81	73	0.40
SBP, mm Hg	133 ± 18	130 ± 18	137 ± 18	0.01
DBP, mm Hg	75 ± 11	74 ± 10	77 ± 13	0.10
Diabetes, %	26	22	29	0.50
Coronary artery disease, %	30	37	21	0.03
Atrial fibrillation, %	14	16	14	0.70
Smoker, current/ex/never	50/21/97	28/17/46	22/04/51	0.20
Risk scores				
STS, %	1.43 (0.98-2.37)	1.31 (0.88-2.32)	1.62 (1.04-2.39)	0.30
EuroSCORE II, %	1.49 (1.01-2.44)	1.42 (0.98-2.47)	1.54 (1.02-2.40)	0.60
Drug history				
ACE inhibitor/ARB, %	43	53	31	0.006
Beta-blocker, %	34	32	56	0.50
Statin, %	61	63	59	0.80
Aspirin, %	44	47	41	0.40
Symptomatic (yes/no)	161/7	87/5	74/2	0.30
NYHA functional class				
I	30	23	10	
II	79	40	39	
III	54	26	28	
IV	5	4	1	
Chest pain by CCS				
0	115	60	55	0.90
1	14	12	2	
2	29	9	20	
3	10	8	2	
Syncope	14 (8)	7 (8)	7 (9)	0.70
Six-min walk test, m	480 (338-600)	510 (360-630)	420 (300-510)	0.02
ECG				
LVH by Cornell criteria	43 (26)	25 (27)	18 (24)	0.30
ECG strain	29 (17)	17 (19)	12 (16)	0.50
Blood				
NT-proBNP, ng/l	71 (29-238)	94 (36-304)	50 (28-143)	0.04
NT-proBNP ratio	0.18 (0.08-0.69)	0.33 (0.09-1.12)	0.11 (0.05-0.35)	0.04
hsTnT, pmol/l	14 (9-20)	15 (11-25)	12 (7-16)	0.02
Creatinine, μmol/l	81 (70-98)	90 (77-103)	74 (63-86)	<0.001
eGFR, ml/min/1.73 m ²	74 (63-92)	75 (64-95)	72 (61-86)	0.30
Hematocrit, %	40 ± 4	41 ± 5	39 ± 4	0.01

Values are mean ± SD, n (%), n, or median (interquartile range). *1 patient had unicuspid AS (female). **Bold** values indicates p < 0.05.

ACE = angiotensin-converting enzyme; ARB = angiotensin-receptor blocker; BSA = body surface area; CCS = Canadian Cardiovascular Society Grading System; DBP = diastolic blood pressure; ECG = electrocardiogram; eGFR = estimated glomerular filtration rate; EuroSCORE II = European System for Cardiac Operative Risk Evaluation II score; hsTnT = high-sensitivity troponin T; IQR = interquartile range; LVH = left ventricular hypertrophy; NT-proBNP = N-terminal pro-brain natriuretic peptide; NYHA = New York Heart Association; SBP = systolic blood pressure; STS = Society of Thoracic Surgeons' risk model score.

hypertrophy (71% male) and eccentric hypertrophy (76% male) dominated in men. This outcome was not apparent according to echocardiography (p = 0.40; female: normal geometry 56%, concentric remodeling

TABLE 2 Imaging Parameters (Echocardiography and CMR)				
	Total	Men	Women	p Value
Echocardiography				
V _{max} , m/s	4.33 ± 0.59	4.38 ± 0.59	4.27 ± 0.59	0.30
Peak gradient, mm Hg	76 ± 20	78 ± 21	75 ± 19	0.40
Mean gradient, mm Hg	47 ± 14	49 ± 15	46 ± 13	0.30
AVA, cm ²	0.76 ± 0.27	0.78 ± 0.27	0.74 ± 0.26	0.10
AVAi, cm ² /m ²	0.40 ± 0.13	0.39 ± 0.13	0.41 ± 0.13	0.30
VTI ratio	0.23 ± 0.08	0.22 ± 0.07	0.24 ± 0.08	0.10
Energy loss index, cm ² /m ²	0.48 ± 0.19	0.46 ± 0.17	0.53 ± 0.30	0.06
Systemic vascular resistance, dyne*s/cm ⁵	1,237 (1,038-1,550)	1,167 (1,010-1,400)	1,338 (1,142-1,647)	0.001
Systemic arterial compliance, ml/mm Hg*m ²	1.35 ± 0.47	1.28 ± 0.49	1.42 ± 0.43	0.06
Zva, mm Hg/ml*m ²	4.2 ± 1.2	4.1 ± 1.3	4.4 ± 1.0	0.20
E wave	0.85 ± 0.30	0.83 ± 0.30	0.87 ± 0.29	0.40
E/A ratio	0.97 ± 0.49	1.03 ± 0.59	0.89 ± 0.32	0.10
E deceleration time, ms	237 ± 75	236 ± 82	238 ± 66	0.90
E/e' ratio	13.6 ± 5.9	13.5 ± 6.2	13.8 ± 5.6	0.80
PASP, mm Hg	30 (25-25)	30 (25-25)	30 (26-35)	0.50
CMR parameters				
EDVi, ml/m ²	67 ± 22	73 ± 23	61 ± 19	0.001
ESVi, ml/m ²	23 ± 20	27 ± 22	18 ± 16	0.001
LVMi, g/m ²	88 ± 25	98 ± 23	75 ± 20	0.001
Septal wall thickness, mm	14 ± 3	15 ± 2	13 ± 2	<0.001
Left ventricular diameter, mm	50 ± 7	52 ± 7	47 ± 6	<0.001
Mass/volume ratio	1.37 ± 0.35	1.44 ± 0.39	1.30 ± 0.28	0.001
LAAi, pre-operative, cm ² /m ²	13.5 ± 3.7	13.6 ± 3.3	13.4 ± 4.1	0.80
LVEF, %	70 ± 15	67 ± 16	74 ± 13	0.001
SVi, ml/m ²	45 ± 10	46 ± 12	43 ± 8	0.30
Myocardial contraction fraction, %	0.53 ± 0.15	0.48 ± 0.13	0.59 ± 0.14	0.001
Wall stress index, kPa	1.40 ± 0.29	1.35 ± 0.29	1.46 ± 0.27	0.008
Pattern of remodeling by CMR				
Normal geometry	28 (17)	5 (18)	23 (82)	Chi-square test = 34; p < 0.001
Concentric remodeling	45 (27)	18 (40)	27 (60)	
Concentric hypertrophy	70 (41)	50 (71)	20 (29)	
Eccentric hypertrophy	25 (15)	19 (76)	6 (24)	
CMR flow				
Aortic regurgitant fraction, %	12 (4-35)	14 (6-47)	10 (3-24)	0.10
Mitral regurgitant fraction, %	5 (1-23)	3 (0-24)	6 (1-22)	0.40
Late gadolinium enhancement				
3 SDs method, g	9.6 (5.0-22.4)	14.8 (8.4-26.9)	6.0 (4.0-17.4)	<0.001
T1 mapping (MOLLI)				
T1 myocardium (native, in ms)	1,045 ± 45	1,041 ± 42	1,051 ± 47	0.20
ECV, %	28.6 ± 2.9	28.7 ± 3.1	28.6 ± 2.5	0.20
Cell volume, indexed, ml/m ²	65 ± 18	73 ± 17	55 ± 13	<0.001
Matrix volume, indexed, ml/m ²	25 ± 9	29 ± 9	21 ± 6	<0.001

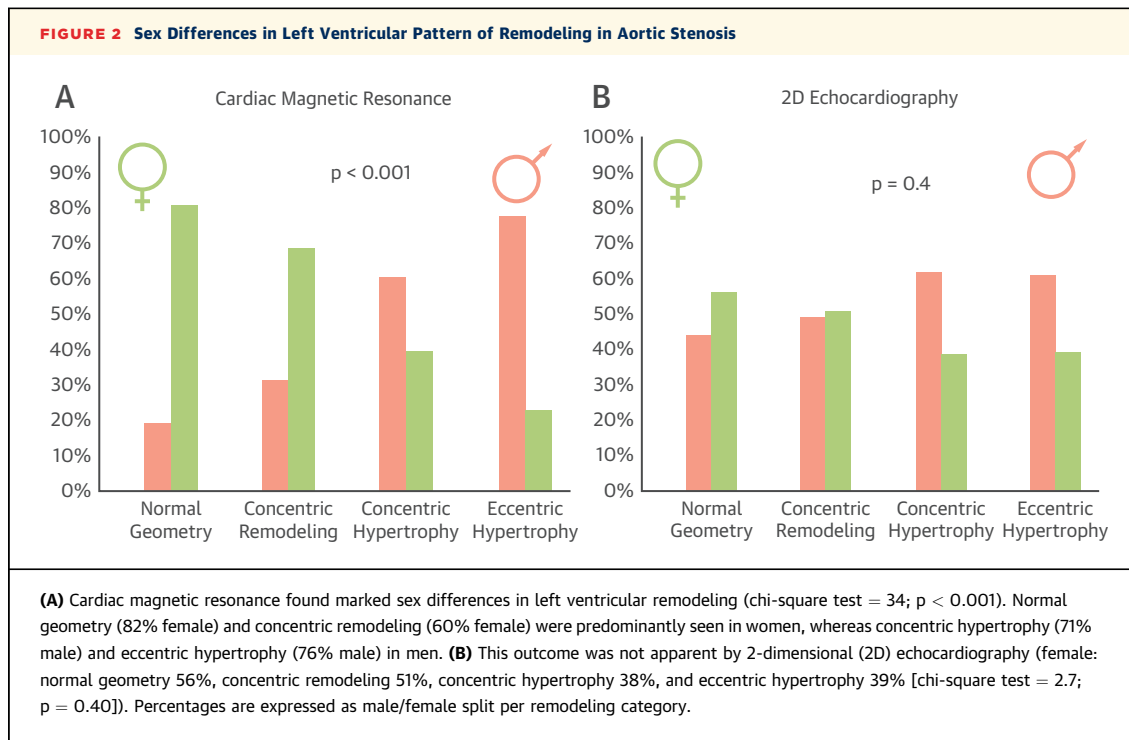
Values are mean ± SD, median (interquartile range), or n (%). **Bold** values indicates p < 0.05.

AVA = aortic valve area; AVAi = aortic valve area index; CMR = cardiac magnetic resonance; E = peak early velocity of the transmitral flow; e' = peak early diastolic velocity of the mitral annulus displacement; E/A ratio = ratio of peak velocity flow in early diastole (E wave) to peak velocity flow in late diastole (A wave); ECV = extracellular volume; EDVi = end-diastolic volume index; ESVi = end-systolic volume index; IQR = interquartile range; LAAi = left atrial area index; LVMi = left ventricular mass index; LVEF = left ventricular ejection fraction; MOLLI = modified Look-Locker inversion-recovery; PASP = pulmonary artery systolic pressure measured by echocardiography; SVi = stroke volume index; V_{max} = peak velocity through the aortic valve; VTI = velocity-time-integral; Zva = valvuloarterial impedance.

51%, concentric hypertrophy 38%, and eccentric hypertrophy 39%) (Figure 2, Online Figure 1).

SYMPTOMS AND MYOCARDIAL RESPONSE. No sex differences in New York Heart Association functional class were found (p = 0.20). Although men were able to walk farther than women on the 6-min walk test

assessment (510 m [IQR: 360 to 630 m] vs. 420 m [IQR: 300 to 510 m]; p = 0.02), the percentage-predicted 6-min walk test distance (31) did not significantly differ between men and women (97 ± 34% vs. 96 ± 40%; p = 0.60). LVEF was lower in men than in women (67 ± 16% vs. 74 ± 13%; p < 0.001) (Table 2).



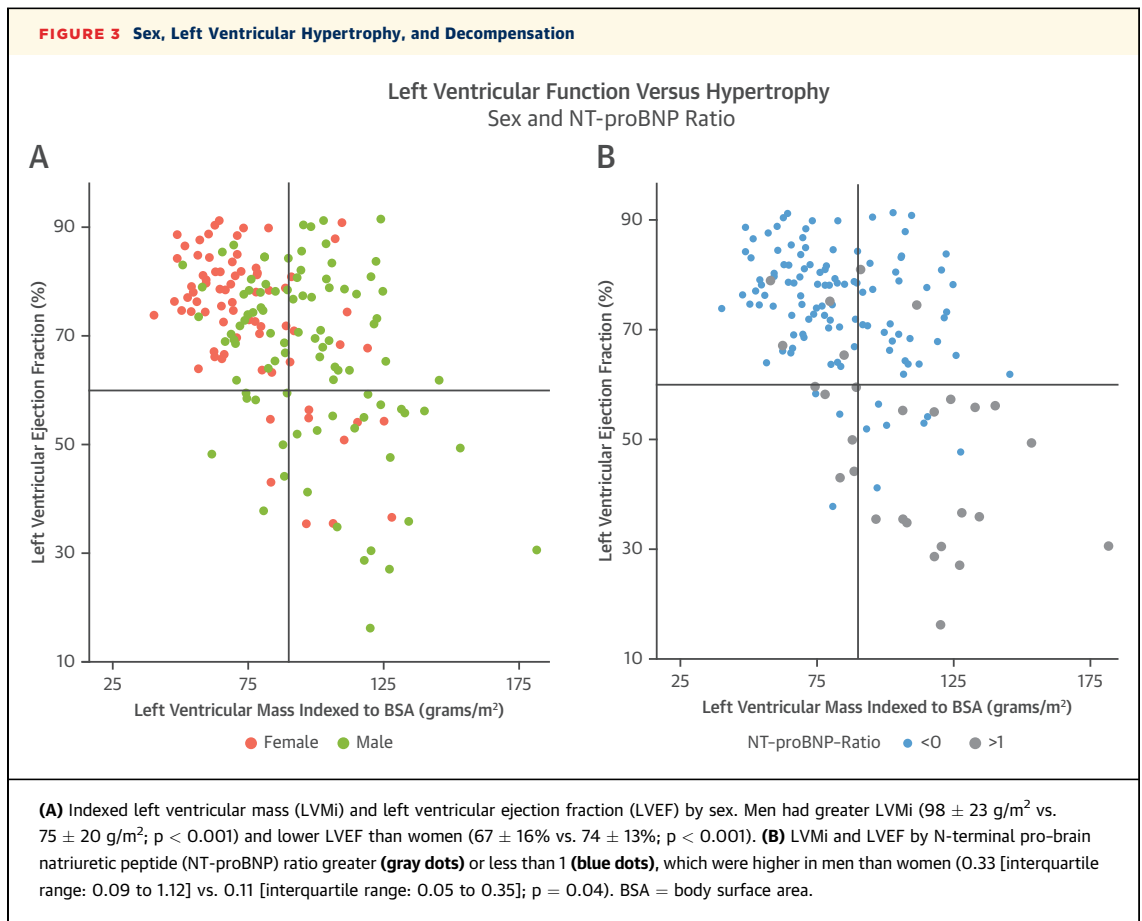
Men had lower minute work (15.6 ± 4.7 ml·mm Hg/min vs. 17.7 ± 4.5 ml·mm Hg/min; $p = 0.005$) and myocardial contraction fraction ($48 \pm 13\%$ vs. $59 \pm 14\%$; $p < 0.001$). Furthermore, both NT-proBNP and hsTnT were higher in men (NT-proBNP: 94 pmol/l [IQR: 36 to 304 pmol/l] vs. 50 pmol/l [IQR: 28 to 143 pmol/l] [$p = 0.04$]; hsTnT: 15 pg/l [IQR: 11 to 25 pg/l] vs. 12 pg/l [IQR: 7 to 16 pg/l] [$p = 0.01$]). **Figure 3** displays the distribution of LVEF versus indexed LV mass according to sex and according to BNP clinical activation, defined as a NT-proBNP ratio >1 (absolute NT-proBNP concentration indexed for the 95th centile of normal range for age and sex [32]).

FOCAL FIBROSIS, EXTRACELLULAR EXPANSION, AND SEX. Examples of LGE patterns are shown in **Figure 4**. There was more LGE in men according to both overall prevalence (71% vs. 46%; $p < 0.01$) and extent (14.8 g [IQR: 8.4 to 26.9 g] vs. 6.0 g [IQR: 4.0 to 17.4 g]; $p < 0.001$), although these differences were not statistically significant when expressed as a percentage of the LV mass ($8.6 \pm 5.6\%$ vs. $7.7 \pm 5.9\%$; $p = 0.10$). Whereas prevalence of infarct pattern LGE was the same (men 16% vs. women 17%), noninfarct pattern LGE was more common in men (59% vs. 37%). No sex differences in native myocardial T1 or ECV (T1: $1,041 \pm 42$ ms vs. $1,051 \pm 47$ ms [$p = 0.20$]; ECV: $28.6 \pm 3.1\%$ vs. $28.2 \pm 2.7\%$ [$p = 0.20$]) were observed. However, using the ECV to dichotomize the LVMi into

matrix and cell compartments, both indexed matrix (28.5 ± 8.8 ml/m² vs. 21.4 ± 6.3 ml/m²; $p < 0.001$) and cell volumes (72.7 ± 16.7 ml/m² vs. 54.7 ± 13.0 ml/m²; $p < 0.001$) were higher in men.

DISCUSSION

In this prospective multimodality study of 168 patients with symptomatic severe AS referred for surgical AVR, despite the same referral age, valve severity, and functional status, there were major sex differences in myocardial remodeling, fibrosis, and resultant LV function. Our data highlight the importance of the myocardial response in AS encompassing a wide geometric and functional range (**Figure 5**), which is neither associated with the hemodynamic severity of the aortic valve stenosis nor observed by using conventional echocardiography. Men predominantly had concentric or eccentric LVH as well as a less favorable, maladaptive ventricular phenotype (lower LVEF, higher NT-proBNP and hsTnT, and more focal fibrosis and extracellular expansion). In contrast, women exhibited a possibly more favorable phenotype with less hypertrophy, less focal fibrosis and extracellular expansion, and a higher prevalence of normal geometry or concentric remodeling with higher LVEF. Although the higher levels of NT-proBNP and hsTnT could be partially explained by more LVH and larger



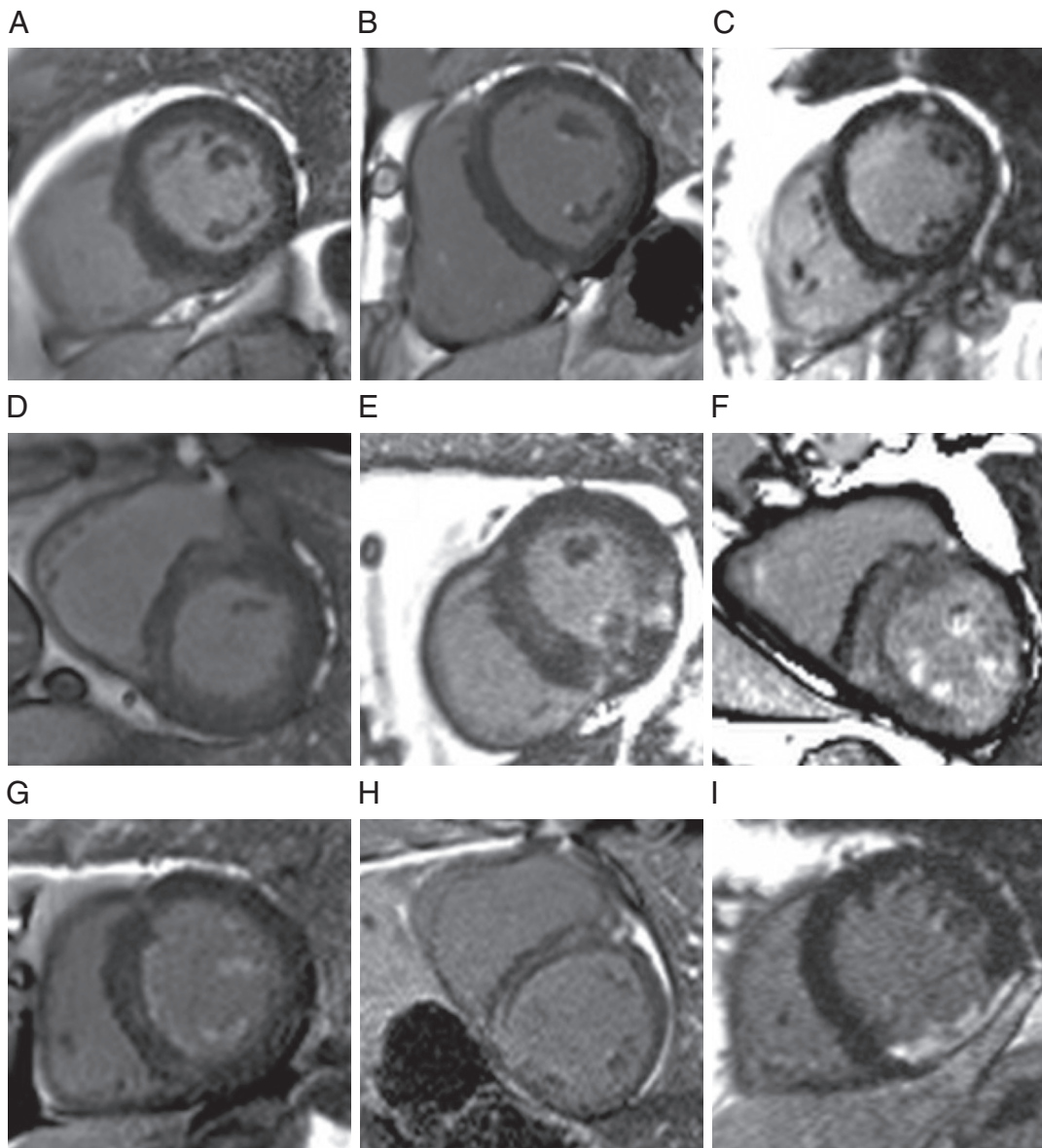
hearts in men, functional and fibrosis parameters were consistent with a worse myocardial remodeling in men.

These findings raise a few key issues. First, given the stark differences in myocardial remodeling, how do these affect the interpretation of the hemodynamic severity of the valve stenosis? Second, these changes may be adaptive or maladaptive: can LVEF, NT-proBNP, and hsTnT adequately highlight the transition into maladaptation, or are other biomarkers needed? In addition, are blood biomarkers more informative than imaging? Finally, what are the mechanisms driving the sex differences in remodeling?

SEX DIMORPHISM IN MYOCARDIAL RESPONSE. In this study, women seemed to tolerate a similar level of valve-related afterload better (women even had higher blood pressures and fewer cardioprotective drugs), with better-preserved wall stress and better systolic pump performance (LVEF and myocardial contraction fraction) than men. Sex-related

differences in myocardial remodeling have been reported in the elderly with or without AS (11,19,33-35). In animal models, sex dimorphism exists in the baseline findings of the heart (difference in size, physiology, gene profiles, and contractile properties), response to pressure or volume overload (more hypertrophy and dilatation, respectively), and cardiomyocyte response to aging and modification of cardiac gene expression (36). Cellular, molecular, and neurohormonal mechanisms for the differential response in men have been proposed, including increased interstitial fibrosis, greater activation of profibrotic and inflammatory pathways, and differential expression of androgen and estrogen receptors (21,37-39). Although the interplay of protective effects of estrogens and deleterious effects of androgens may play a key role in the sex dimorphism, the majority of female patients in our study were postmenopausal, and none were receiving hormone replacement therapy. Sex differences in the renin-angiotensin system, nitric oxide activity, and norepinephrine release may contribute to differences

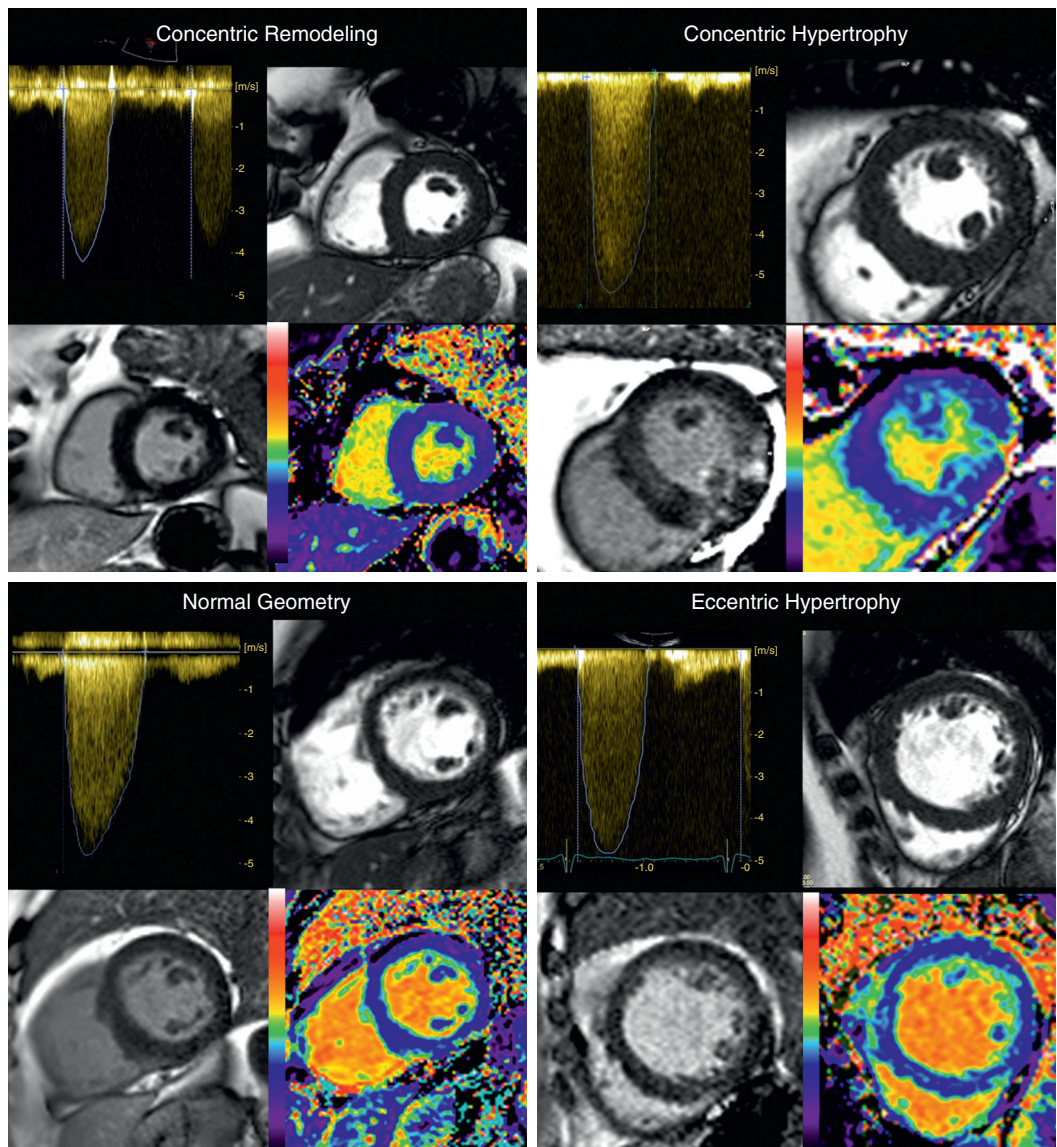
FIGURE 4 LGE Pattern in Severe Aortic Stenosis



(A) No late gadolinium enhancement (LGE). **(B)** Focal papillary muscle and right ventricular (RV) insertion point LGE. **(C)** Focal mid-wall LGE in the anterolateral wall. Diffuse, patchy myocardial LGE ranging from **(D)** mild to **(E)** moderate to **(F)** severe LGE burden, associated with papillary muscle RV insertion and RV free wall LGE. **(G)** Noninfarct, subendocardial, and papillary muscle LGE. **(H)** Dilated cardiomyopathy pattern LGE. **(I)** Full thickness infarct in the thinned inferior wall.

in LV remodeling (40); similar differences in cardiac function and arterial hemodynamic variables to those observed here have also been seen in community-based samples of older men and women (41). A less explored possibility is that the myocardium could have been sex-patterned during cardiac fetal formation to adapt differently during adult life.

DISCORDANCE WITH PREVIOUS ECHOCARDIOGRAPHIC DATA. Sex dimorphism in cardiac remodeling in AS is present in the literature but has not been emphasized. For example, in an echocardiographic study of 2,017 patients (36% female) awaiting AVR (42), LV impairment had a 3.5 to 1 male-to-female ratio and LVEF >70% had a 1:1 male-to-female ratio. Given the

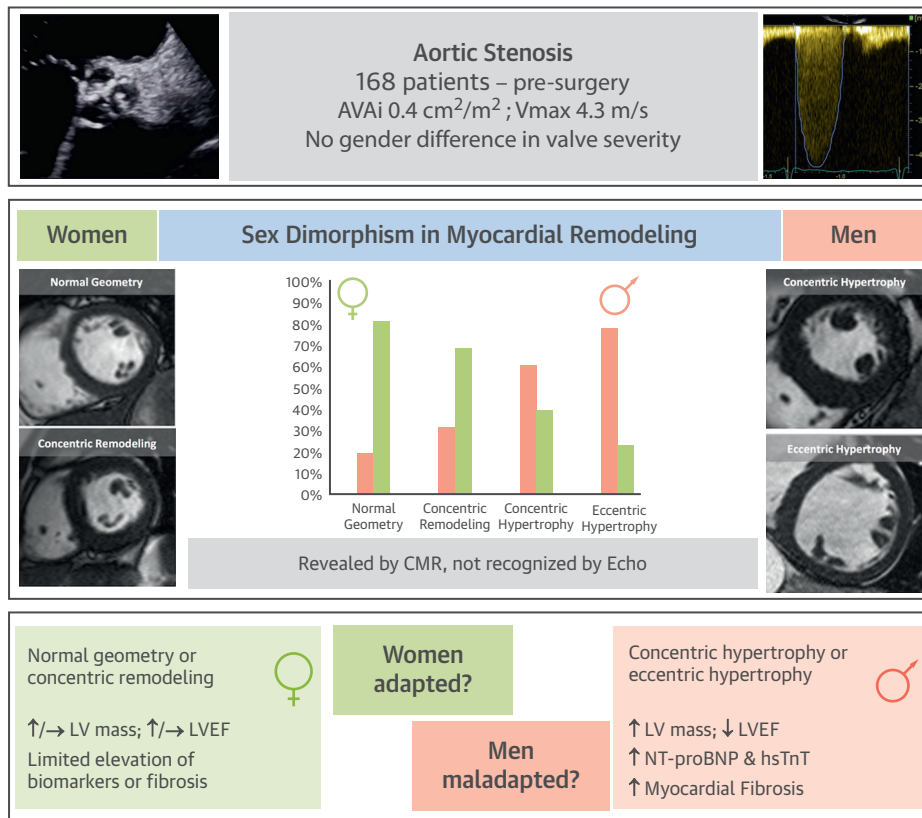
FIGURE 5 Left Ventricular Remodeling in Aortic Stenosis by Multimodality Imaging

There are 4 images each for all 4 patterns of remodeling: continuous-wave Doppler assessment of aortic stenosis severity (**top left**); Steady State Free Precession short-axis cine clip demonstrating the pattern of remodeling (as described in [Figure 1](#)) (**top right**); phase-sensitive inversion recovery late gadolinium enhancement image for focal fibrosis (**bottom left**); extracellular volume fraction map for diffuse fibrosis (**bottom right**).

study entry sex ratios, if there had been no sex dimorphism, both of these ratios should have been 1.7 to 1.0. However, the sex dimorphism of cardiac remodeling according to CMR was much more extreme than that according to echocardiography ([Figure 6](#)). There are modality-specific differences in ascertainment that could explain this: cross-sectional echocardiography uses derived wall thickness to

cavity width ratios, whereas CMR uses a 3-dimensional-derived mass to volume ratio ([14,22](#)). Each technique also has indexed sex-specific reference ranges and cut-points ([Online Appendix](#)), which could be inaccurate and magnify differences. These may be differently sensitive to sex-influenced confounders (e.g., a basal septal bulge). Such explanations seem inadequate, however, and the impression

FIGURE 6 Sex Dimorphism in Myocardial Response to AS



Aortic stenosis (AS) is a disease of both valve and LV. Sex differences may play a role in disease phenotyping. The present study investigated 168 patients with severe symptomatic AS by using echocardiography (echo), cardiac magnetic resonance (CMR), and biomarkers. There were no sex differences in AS severity or functional capacity, but CMR captured a sex dimorphism in the LV remodeling pattern, missed by 2-dimensional echocardiography and more adverse in men with more LV dysfunction (by LVEF, N-terminal pro-brain natriuretic peptide [NT-proBNP], high-sensitivity troponin T [hsTnT]) and myocardial fibrosis (focal and diffuse). Given equal valve severity, LV associations with AS appear more maladaptive in men, with more extreme sex differences than previously reported. AVAi = indexed aortic valve area; V_{max} = peak velocity; other abbreviations as in Figures 1 and 3.

is that an echocardiography-based approach to cardiac remodeling has induced an underestimation of biological sex dimorphism in cardiac remodeling in AS.

PERSPECTIVE: DO WE NEED SEX-SPECIFIC THRESHOLDS FOR AVR? Timing of aortic valve intervention is one of the greatest challenges in AS, particularly in asymptomatic patients. Recent focus has turned toward the complex interplay between aortic valve stenosis, vascular load, and myocardial response (inappropriate hypertrophy, myocardial stress [NT-proBNP], fibrosis [troponin, LGE, and ECV], and myocardial perfusion reserve). Our data support the notion that we may need to treat men and women differently because they experience a different cardiac “milieu,” different combined

(valve and vasculature) afterload, and display a different myocardial response. Crucially, data showing reverse remodeling after valve replacement and its impact on outcome are required and pending.

STUDY LIMITATIONS. Only patients with severe symptomatic AS, and specifically those referred for surgery at a specialist center, were included. The study is therefore not representative of patients treated medically or by transcatheter AVR, or patients with milder disease. Other factors, including hypertension duration and control, duration of severe AS, and coronary artery disease, may in part account for the sex dimorphism in LV remodeling. CMR inclusion criteria excluded patients with pacemakers and an estimated glomerular filtration rate <30 ml/min/1.73 m²; this approach only excluded 7% of patients and is

unlikely to have biased our findings. No invasive LV pressure data were obtained; due to stroke risk associated with crossing the aortic valve, this measurement is not routinely performed in our institution. Imprecision in T1 mapping may have been introduced due to partial-voluming of blood (although this possibility was minimized by using a 10% offset) (Online Appendix) and in those patients with atrial fibrillation (n = 24; 14%). Furthermore, reduced capillary density (lower ECV) or compensatory vasodilatation (higher ECV) may confound ECV measurements, which capture all extracellular space including the intravascular plasma (43,44). Finally, no data were available on the duration of AS.

CONCLUSIONS

CMR revealed sex differences in associations between AS and myocardial remodeling that were not evident from conventional echocardiography. Given equal valve severity, the myocardial response to AS seems more maladaptive in men than previously reported. These data suggest that more detailed phenotyping of patients with AS is required; the resultant uncovering of a maladaptive ventricular response may be influential in the current debate regarding immediate or deferred intervention for severe AS.

ADDRESS FOR CORRESPONDENCE: Prof. James C. Moon, Barts Heart Centre, St Bartholomew's Hospital, 2nd Floor, King George V Block, London EC1A 7BE, United Kingdom. E-mail: j.moon@ucl.ac.uk.

PERSPECTIVES

COMPETENCY IN MEDICAL KNOWLEDGE: AS is a disease of both valve and left ventricle. Sex difference may play a role in disease phenotyping. This study found sex differences in the associations between AS and myocardial remodeling that were more adverse in men, including more LV decompensation and myocardial fibrosis (focal and diffuse) despite similar valve severity.

TRANSLATIONAL OUTLOOK: Timing of aortic valve intervention is one of the greatest challenges in AS. Recent focus has turned toward the complex interplay between valve stenosis, vascular load, and myocardial response. Sex differences in the myocardial response suggest that men and women may need to be managed differently. Crucially, outcome data and reverse remodeling after valve replacement and its impact on outcome are required and pending.

REFERENCES

- Dweck MR, Boon NA, Newby DE. Calcific aortic stenosis: a disease of the valve and the myocardium. *J Am Coll Cardiol* 2012;60:1854-63.
- Vahanian A, Alfieri O, Andreotti F, et al. Guidelines on the management of valvular heart disease (version 2012): the Joint Task Force on the Management of Valvular Heart Disease of the European Society of Cardiology (ESC) and the European Association for Cardio-Thoracic Surgery (EACTS). *Eur J Cardiothorac Surg* 2012;42:S1-44.
- Cioffi G, Faggiano P, Vizzardi E, et al. Prognostic effect of inappropriately high left ventricular mass in asymptomatic severe aortic stenosis. *Heart* 2011;97:301-7.
- Azevedo CF, Nigri M, Higuchi ML, et al. Prognostic significance of myocardial fibrosis quantification by histopathology and magnetic resonance imaging in patients with severe aortic valve disease. *J Am Coll Cardiol* 2010;56:278-87.
- Dweck MR, Joshi S, Murigu T, et al. Midwall fibrosis is an independent predictor of mortality in patients with aortic stenosis. *J Am Coll Cardiol* 2011;58:1271-9.
- Barone-Rochette G, Pierard S, De Meester de Ravenstein C, et al. Prognostic significance of LGE by CMR in aortic stenosis patients undergoing valve replacement. *J Am Coll Cardiol* 2014;64:144-54.
- Weidemann F, Herrmann S, Stork S, et al. Impact of myocardial fibrosis in patients with symptomatic severe aortic stenosis. *Circulation* 2009;120:577-84.
- Herrmann S, Stork S, Niemann M, et al. Low-gradient aortic valve stenosis myocardial fibrosis and its influence on function and outcome. *J Am Coll Cardiol* 2011;58:402-12.
- Chin CW, Shah AS, McAllister DA, et al. High-sensitivity troponin I concentrations are a marker of an advanced hypertrophic response and adverse outcomes in patients with aortic stenosis. *Eur Heart J* 2014;35:2312-21.
- Rosjo H, Andreassen J, Edvardsen T, Omland T. Prognostic usefulness of circulating high-sensitivity troponin T in aortic stenosis and relation to echocardiographic indexes of cardiac function and anatomy. *Am J Cardiol* 2011;108:88-91.
- Carroll JD, Carroll EP, Feldman T, et al. Sex-associated differences in left ventricular function in aortic stenosis of the elderly. *Circulation* 1992;86:1099-107.
- Page A, Dumesnil JG, Clavel MA, et al. Metabolic syndrome is associated with more pronounced impairment of left ventricle geometry and function in patients with calcific aortic stenosis: a substudy of the ASTRONOMER (Aortic Stenosis Progression Observation Measuring Effects of Rosuvastatin). *J Am Coll Cardiol* 2010;55:1867-74.
- Lund BP, Gohlke-Barwolf C, Cramariuc D, Rossebo AB, Rieck AE, Gerds E. Effect of obesity on left ventricular mass and systolic function in patients with asymptomatic aortic stenosis (a Simvastatin Ezetimibe in Aortic Stenosis [SEAS] substudy). *Am J Cardiol* 2010;105:1456-60.
- Dweck MR, Joshi S, Murigu T, et al. Left ventricular remodeling and hypertrophy in patients with aortic stenosis: insights from cardiovascular magnetic resonance. *J Cardiovasc Magn Reson* 2012;14:50.
- Ganau A, Devereux RB, Roman MJ, et al. Patterns of left ventricular hypertrophy and geometric remodeling in essential hypertension. *J Am Coll Cardiol* 1992;19:1550-8.
- Flett AS, Hayward MP, Ashworth MT, et al. Equilibrium contrast cardiovascular magnetic resonance for the measurement of diffuse myocardial fibrosis: preliminary validation in humans. *Circulation* 2010;122:138-44.
- White SK, Sado DM, Fontana M, et al. T1 mapping for myocardial extracellular volume measurement by CMR: bolus only versus primed infusion technique. *J Am Coll Cardiol Img* 2013;6:955-62.

18. Lee SP, Lee W, Lee JM, et al. Assessment of diffuse myocardial fibrosis by using MR imaging in asymptomatic patients with aortic stenosis. *Radiology* 2015;274:359-69.
19. Douglas PS, Otto CM, Mickel MC, Labovitz A, Reid CL, Davis KB. Gender differences in left ventricle geometry and function in patients undergoing balloon dilatation of the aortic valve for isolated aortic stenosis. *NHLBI Balloon Valvuloplasty Registry*. *Br Heart J* 1995;73:548-54.
20. Aurigemma GP, Gaasch WH. Gender differences in older patients with pressure-overload hypertrophy of the left ventricle. *Cardiology* 1995;86:310-7.
21. Villari B, Campbell SE, Schneider J, Vassalli G, Chiariello M, Hess OM. Sex-dependent differences in left ventricular function and structure in chronic pressure overload. *Eur Heart J* 1995;16:1410-9.
22. Dobson LE, Fairbairn TA, Musa TA, et al. Sex-related differences in left ventricular remodeling in severe aortic stenosis and reverse remodeling after aortic valve replacement: a cardiovascular magnetic resonance study. *Am Heart J* 2016;175:101-11.
23. Castillo-Moreno JA, Garcia-Escribano IA, Martinez-Pascual-de-Riquelme M, et al. Prognostic usefulness of the 6-minute walk test in patients with severe aortic stenosis. *Am J Cardiol* 2016;118:1239-43.
24. Baumgartner H, Hung J, Bermejo J, et al. Echocardiographic assessment of valve stenosis: EAE/ASE recommendations for clinical practice. *Eur J Echocardiogr* 2009;10:1-25.
25. King DL, El-Khoury Coffin L, Maurer MS. Myocardial contraction fraction: a volumetric index of myocardial shortening by freehand three-dimensional echocardiography. *J Am Coll Cardiol* 2002;40:325-9.
26. Alter P, Rupp H, Stoll F, et al. Increased end diastolic wall stress precedes left ventricular hypertrophy in dilative heart failure—use of the volume-based wall stress index. *Int J Cardiol* 2012;157:233-8.
27. Pibarot P, Dumesnil JG. Improving assessment of aortic stenosis. *J Am Coll Cardiol* 2012;60:169-80.
28. Moon JC, Messroghli DR, Kellman P, et al. Myocardial T1 mapping and extracellular volume quantification: a Society for Cardiovascular Magnetic Resonance (SCMR) and CMR Working Group of the European Society of Cardiology consensus statement. *J Cardiovasc Magn Reson* 2013;15:92.
29. Treibel TA, Fontana M, Gilbertson JA, et al. Occult transthyretin cardiac amyloid in severe calcific aortic stenosis: prevalence and prognosis in patients undergoing surgical aortic valve replacement. *Circ Cardiovasc Imaging* 2016;9: pii: e005066; <https://doi.org/10.1161/CIRCIMAGING.116.005066>.
30. Garcia D, Pibarot P, Dumesnil JG, Sakr F, Durand LG. Assessment of aortic valve stenosis severity: a new index based on the energy loss concept. *Circulation* 2000;101:765-71.
31. Enright PL, Sherrill DL. Reference equations for the six-minute walk in healthy adults. *Am J Respir Crit Care Med* 1998;158:1384-7.
32. Clavel MA, Malouf J, Michelena HI, et al. B-type natriuretic peptide clinical activation in aortic stenosis: impact on long-term survival. *J Am Coll Cardiol* 2014;63:2016-25.
33. Kostkiewicz M, Tracz W, Olszowska M, Podolec P, Drop D. Left ventricular geometry and function in patients with aortic stenosis: gender differences. *Int J Cardiol* 1999;71:57-61.
34. Legget ME, Kuusisto J, Healy NL, Fujioka M, Schwaegler RG, Otto CM. Gender differences in left ventricular function at rest and with exercise in asymptomatic aortic stenosis. *Am Heart J* 1996; 131:94-100.
35. Piro M, Della Bona R, Abbate A, Biasucci LM, Crea F. Sex-related differences in myocardial remodeling. *J Am Coll Cardiol* 2010;55:1057-65.
36. Deschepper CF, Llamas B. Hypertensive cardiac remodeling in males and females: from the bench to the bedside. *Hypertension* 2007;49: 401-7.
37. Petrov G, Regitz-Zagrosek V, Lehmkuhl E, et al. Regression of myocardial hypertrophy after aortic valve replacement: faster in women? *Circulation* 2010;122:S23-8.
38. Kararigas G, Dworatzek E, Petrov G, et al. Sex-dependent regulation of fibrosis and inflammation in human left ventricular remodeling under pressure overload. *Eur J Heart Fail* 2014;16:1160-7.
39. Marsh JD, Lehmann MH, Ritchie RH, Gwathmey JK, Green GE, Schiebinger RJ. Androgen receptors mediate hypertrophy in cardiac myocytes. *Circulation* 1998;98:256-61.
40. Orłowska-Baranowska E, Placha G, Gaciong Z, et al. Influence of ACE I/D genotypes on left ventricular hypertrophy in aortic stenosis: gender-related differences. *J Heart Valve Dis* 2004;13: 574-81.
41. Mitchell GF, Gudnason V, Launer LJ, Aspelund T, Harris TB. Hemodynamics of increased pulse pressure in older women in the community-based Age, Gene/Environment Susceptibility-Reykjavik Study. *Hypertension* 2008;51:1123-8.
42. Dahl JS, Eleid MF, Michelena HI, et al. Effect of left ventricular ejection fraction on post-operative outcome in patients with severe aortic stenosis undergoing aortic valve replacement. *Circ Cardiovasc Imaging* 2015;8: pii: e002917; <https://doi.org/10.1161/CIRCIMAGING.114.002917>.
43. Rakusan K, Flanagan MF, Geva T, Southern J, Van Praagh R. Morphometry of human coronary capillaries during normal growth and the effect of age in left ventricular pressure-overload hypertrophy. *Circulation* 1992;86:38-46.
44. Mahmood M, Piechnik SK, Levelt E, et al. Adenosine stress native T1 mapping in severe aortic stenosis: evidence for a role of the intravascular compartment on myocardial T1 values. *J Cardiovasc Magn Reson* 2014;16:92.

KEY WORDS aortic stenosis, fibrosis, left ventricular hypertrophy

APPENDIX For an expanded Methods section and a supplemental figure, please see the online version of this paper.