








ORIGINAL RESEARCH

Effects of Dapagliflozin in Chronic Kidney Disease, With and Without Other Cardiovascular Medications: DAPA-CKD Trial

Glenn M. Chertow , MD*; Ricardo Correa-Rotter, MD*; Priya Vart, PhD; Niels Jongs, PhD; John J. V. McMurray , MD; Peter Rossing , MD; Anna Maria Langkilde, MD; C. David Sjöström , MD; Robert D. Toto , MD; David C. Wheeler , MD; Hiddo J. L. Heerspink , PhD; for the DAPA-CKD Trial Committees and Investigators[†]

BACKGROUND: The DAPA-CKD (Dapagliflozin and Prevention of Adverse Outcomes in Chronic Kidney Disease) trial (NCT03036150) demonstrated that dapagliflozin reduced the risk of kidney and cardiovascular events in patients with chronic kidney disease and albuminuria with and without type 2 diabetes. We aimed to determine whether baseline cardiovascular medication use modified the dapagliflozin treatment effect.

METHODS AND RESULTS: We randomized 4304 adults with baseline estimated glomerular filtration rate 25 to 75 mL/min per 1.73 m² and urinary albumin:creatinine ratio 200 to 5000 mg/g to dapagliflozin 10 mg or placebo once daily. The primary end point was a composite of ≥50% estimated glomerular filtration rate decline, end-stage kidney disease, and kidney or cardiovascular death. Secondary end points included a kidney composite end point (primary composite end point without cardiovascular death), a cardiovascular composite end point (hospitalized heart failure or cardiovascular death), and all-cause mortality. We categorized patients according to baseline cardiovascular medication use/nonuse. Patients were required by protocol to receive a stable (and maximally tolerated) dose of a renin-angiotensin-aldosterone system inhibitor. We observed consistent benefits of dapagliflozin relative to placebo, irrespective of baseline use/nonuse of renin-angiotensin-aldosterone system inhibitors (98.1%), calcium channel blockers (50.7%), β-adrenergic antagonists (39.0%), diuretics (43.7%), and antithrombotic (47.4%), and lipid-lowering (15.0%) agents. Use of these drugs in combination with dapagliflozin did not increase the number of serious adverse events.

CONCLUSIONS: The safety profile and efficacy of dapagliflozin on kidney and cardiovascular end points in patients with chronic kidney disease were consistent among patients treated and not treated at baseline with a range of cardiovascular medications.

REGISTRATION INFORMATION: clinicaltrials.gov. Identifier: NCT03036150.

Key Words: cardiovascular medications ■ chronic kidney disease ■ dapagliflozin ■ SGLT2 inhibitors

In the DAPA-CKD (Dapagliflozin and Prevention of Adverse outcomes in Chronic Kidney Disease) trial, the sodium-glucose cotransporter-2 (SGLT2) inhibitor dapagliflozin reduced the risk of major kidney and cardiovascular events and prolonged survival in patients with chronic kidney disease (CKD),

Correspondence to: Hiddo J. L. Heerspink, PhD, Department of Clinical Pharmacy and Pharmacology, De Brug 50D-1-015; EB70, University Medical Centre Groningen, PO Box 30001, 9700 AD Groningen, The Netherlands. Email: h.j.lambers.heerspink@umcg.nl

This manuscript was sent to Joseph I. Shapiro, MD, Guest Editor, for review by expert referees, editorial decision, and final disposition.

*GM Chertow and R Correa-Rotter contributed equally.

[†]A complete list of the DAPA-CKD Trial Committees and Investigators can be found in the Supplemental Material.

Supplemental Material is available at <https://www.ahajournals.org/doi/suppl/10.1161/JAHA.122.028739>

For Sources of Funding and Disclosures, see page 9.

© 2023 The Authors and AstraZeneca. Published on behalf of the American Heart Association, Inc., by Wiley. This is an open access article under the terms of the [Creative Commons Attribution](https://creativecommons.org/licenses/by/4.0/) License, which permits use, distribution and reproduction in any medium, provided the original work is properly cited.

JAHA is available at: www.ahajournals.org/journal/jaha

CLINICAL PERSPECTIVE

What Is New?

- The DAPA-CKD (Dapagliflozin and Prevention of Adverse Outcomes in Chronic Kidney Disease) trial demonstrated that compared with placebo, dapagliflozin reduced adverse kidney and cardiovascular outcomes and all-cause mortality in patients with chronic kidney disease, irrespective of the presence of diabetes; however, it is unknown whether the use of cardiovascular medications modifies these effects of dapagliflozin in this patient population.
- We investigated the benefits of dapagliflozin in participants treated and not treated with a range of cardiovascular medications—diuretics, calcium channel blockers, β -adrenergic antagonists, antithrombotic agents, and lipid-lowering agents—used as standard of care in the aforementioned patient population; results showed that the efficacy of dapagliflozin on kidney and cardiovascular end points was consistent, with no change in associated safety, irrespective of treatment with a range of cardiovascular medications.

What Are the Clinical Implications?

- These results document the safety and efficacy of dapagliflozin with use/nonuse of a wide range of cardiovascular medications, demonstrating benefits on kidney and cardiovascular outcomes in patients with mild, moderate, and advanced chronic kidney disease, with and without diabetes, which are populations at higher risk of adverse drug effects relative to persons with normal or near normal kidney function. Furthermore, the demonstrated safety of coadministration of dapagliflozin with a range of antithrombotic and lipid-lowering agents may allow patients to enjoy the benefits of dapagliflozin on reducing risks of heart failure and progressive kidney disease, while safely gaining treatment benefits with other agents aimed to reduce cardiovascular complications, thus expanding the treatment repertoire for this patient population.

Nonstandard Abbreviations and Acronyms

AE	adverse event
CANVAS	Canagliflozin Cardiovascular Assessment Study
CKD-EPI	Chronic Kidney Disease Epidemiology Collaboration
CREDESCENCE	Canagliflozin and Renal Events in Diabetes with Established Nephropathy Clinical Evaluation

CRT	cardiac resynchronization therapy
DAPA-CKD	Dapagliflozin and Prevention of Adverse Outcomes in Chronic Kidney Disease
DECLARE-TIMI 58	Dapagliflozin Effect on Cardiovascular Events—Thrombolysis in Myocardial Infarction 58
EMPA-REG	(Empagliflozin) Cardiovascular Outcome
EMPEROR-Reduced	Empagliflozin Outcome Trial in Patients With Chronic Heart Failure With Reduced Ejection Fraction
FIDELIO-DKD	Finerenone in Reducing Kidney Failure and Disease Progression in Diabetic Kidney Disease
NC	non calculable
RAAS	renin-angiotensin-aldosterone system
SGLT2	sodium-glucose cotransporter-2

with and without type 2 diabetes.¹ Similar results had been observed in patients with type 2 diabetes in the CREDESCENCE (Canagliflozin and Renal Events in Diabetes with Established Nephropathy Clinical Evaluation) trial, in which canagliflozin significantly reduced the risks of progressive kidney disease and major cardiovascular events but not cardiovascular mortality.² Previous studies with these and other SGLT2 inhibitors in patients with type 2 diabetes demonstrated significant cardiovascular benefits (EMPA-REG (Empagliflozin) Cardiovascular Outcome), DECLARE-TIMI 58 (Dapagliflozin Effect on Cardiovascular Events—Thrombolysis in Myocardial Infarction 58), and CANVAS (Canagliflozin Cardiovascular Assessment Study).^{2–4}

Patients included in these and other cardiovascular trials are typically treated with a variety of concomitant medications, many of which are indicated either for control of hypertension or for prevention or treatment of other cardiovascular conditions (eg, hypercholesterolemia, coronary, cerebrovascular or peripheral arterial disease, heart failure, and atrial fibrillation). In DAPA-CKD and other trials, maximally tolerated doses of renin-angiotensin-aldosterone system (RAAS) inhibitors were required by protocol.

The DAPA-CKD trial required that all patients be treated with standard of care (regional guideline-concordant) therapies for kidney, cardiovascular, and

other conditions unless contraindicated.¹ The protocol itself did not mandate specific drugs or doses, with the exception of the RAAS inhibitors, as previously described.

In this prespecified analysis of the DAPA-CKD trial, we aimed to examine whether baseline use of cardiovascular medications modified the effects of dapagliflozin on kidney and cardiovascular end points and on safety in patients with CKD and albuminuria.

METHODS

Data Sharing Statement

Data underlying the findings described in this article may be obtained in accordance with AstraZeneca's data sharing policy described at <https://astrazenecagrouptrials.pharmacm.com/ST/Submission/Disclosure>.

Data for studies directly listed on Vivli can be requested through Vivli at www.vivli.org. Data for studies not listed on Vivli can be requested through Vivli at <https://vivli.org/members/enquiries-about-studies-not-listed-on-the-vivli-platform/>. AstraZeneca Vivli member page is also available outlining further details: <https://vivli.org/ourmember/astrazeneca/>.

DAPA-CKD was a randomized, double-blind, placebo-controlled, multicenter clinical trial; articles describing trial design, baseline characteristics, primary results, and results stratified by diabetes status, history of cardiovascular disease, and several other baseline clinical characteristics have been previously published.^{1,5} The trial was sponsored by AstraZeneca and conducted at 386 sites in 21 countries from February 2017 through June 2020 and registered at clinicaltrials.gov (NCT03036150). The safety of participants in the trial was overseen by an independent Data and Safety Monitoring Committee. The DAPA-CKD trial was conducted according to the principles of the Declaration of Helsinki. Ethics committees at all participating centers approved the protocol, and all participants provided written informed consent before any study-specific procedure commenced.

Participants

Adults with or without type 2 diabetes, estimated glomerular filtration rate (eGFR) 25 to 75 mL/min per 1.73 m², and urinary albumin:creatinine ratio 200 to 5000 mg/g were eligible for participation. We required patients to be treated with a stable maximally tolerated dose of RAAS inhibitor (angiotensin-converting enzyme [ACE] inhibitor or angiotensin receptor blocker [ARB]) for ≥4 weeks, unless medically contraindicated. Key exclusion criteria included documented diagnosis of type 1 diabetes, polycystic kidney disease, lupus nephritis, or antineutrophil cytoplasmic

antibody-associated vasculitis. A complete list of inclusion and exclusion criteria and the trial protocol have been previously published.¹

Procedures

Participants were randomly assigned to dapagliflozin 10 mg once daily or matching placebo, in accordance with the sequestered, fixed-randomization schedule, with the use of balanced blocks to ensure an approximate 1:1 ratio of the 2 regimens. Randomization was stratified by diabetes status and urinary albumin:creatinine ratio (≤ or >1000 mg/g). We calculated eGFR using the Chronic Kidney Disease Epidemiology Collaboration and incorporated results from the equation as originally defined, including a term for self-reported race (Black versus non-Black race). Recruitment of patients with eGFR 60 to 75 mL/min per 1.73 m² was limited to no more than 10% of trial participants. Participants and all study personnel (except the Independent Data Monitoring Committee) were masked to treatment allocation.

After randomization, in-person study visits were performed after 2 weeks, 2, 4, and 8 months, and at 4-month intervals thereafter. At each follow-up visit, study personnel recorded vital signs, obtained blood and urine samples, and recorded information on potential study end points, adverse events, concomitant therapies, and study drug adherence.

End Points

The primary composite end point was time to ≥50% decline in eGFR (confirmed by a second serum creatinine measurement after at least 28 days), onset of kidney failure (defined as maintenance dialysis for at least 28 days, kidney transplantation, or eGFR <15 mL/min per 1.73 m² confirmed by a second measurement after at least 28 days), or death from a kidney or cardiovascular cause. Secondary end points were time to (1) a composite kidney end point of ≥50% sustained decline in eGFR, kidney failure, or death from kidney disease; (2) a composite cardiovascular end point defined as hospitalization for heart failure or cardiovascular death; and (3) death from any cause. We also prespecified change in eGFR slope as an exploratory efficacy end point. All efficacy end points were adjudicated by a masked, independent Clinical Events Committee, except for the quantitative assessments of eGFR, which were obtained from our central laboratory.

Cardiovascular Medication Use

Participants were required to receive the highest tolerated dose of RAAS inhibitors; all other agents were prescribed at the discretion of the treating physician in accordance with regional standards of care for

associated conditions. We categorized cardiovascular medications as follows: diuretics (loop diuretic, thiazide diuretic, or mineralocorticoid receptor antagonist), calcium channel blockers, β -adrenergic antagonists, antithrombotic agents (antiplatelet drugs or anticoagulants), and lipid-lowering agents (statins or other). We further categorized patients according to baseline RAAS inhibitor dose, defined as 100% (or more), 50 to <100%, and <50% of the maximum labeled antihypertensive dose, and those not treated with RAAS inhibitors.

Statistical Analysis

The overall analytic approach, power calculation, and prespecified statistical analysis plan have been previously published.¹ All analyses presented here followed the intention-to-treat principle. Briefly, we conducted time-to-event analyses using a proportional hazards (Cox) regression stratified by randomization factors (diabetes status and urinary albumin:creatinine ratio), adjusting for baseline eGFR, yielding hazard ratios and

95% CI from model parameter coefficients and SEs. For the purpose of the current analysis, we evaluated the primary and secondary efficacy end points in participants stratified by baseline use/nonuse of cardiovascular medication class. We tested for heterogeneity of the dapagliflozin treatment effect by including a multiplicative interaction term between randomized treatment group and use/nonuse of cardiovascular medications. For time-to-event analyses, we assessed for nonuniformity of hazard ratios with the Akaike's information criterion. We considered 2-tailed *P* values <0.05 to be statistically significant.

RESULTS

As previously described,¹ 4304 adults with and without type 2 diabetes with baseline eGFR 25 to 75 mL/min per 1.73 m² and urinary albumin:creatinine ratio of 200 to 5000 mg/g were randomized to either dapagliflozin 10 mg or placebo once daily with a median follow-up of 2.4 years. Table 1 shows selected

Table 1. Baseline Characteristics of Participants Stratified by Diabetes Status at Baseline (All Randomized Participants)

Characteristic	With type 2 diabetes		Without type 2 diabetes	
	Dapagliflozin (n=1455)	Placebo (n=1451)	Dapagliflozin (n=697)	Placebo (n=701)
Age,y, mean (SD)	64.1 (9.8)	64.7 (9.5)	56.9 (14.6)	56.0 (14.6)
Female sex, n (%)	494 (34.0)	471 (32.5)	215 (30.8)	245 (35.0)
Weight,kg, mean (SD)	83.2 (20.9)	83.8 (21.2)	77.9 (17.8)	78.3 (19.9)
BMI,kg/m ² , mean (SD)	30.2 (6.2)	30.4 (6.3)	27.7 (5.2)	28.1 (5.9)
Blood pressure,mmHg, mean (SD)				
Systolic	138.8 (17.6)	139.6 (17.1)	132.3 (16.4)	132.9 (16.9)
Diastolic	76.5 (10.4)	76.5 (9.9)	79.6 (10.9)	79.6 (10.8)
eGFR,mL/min/1.73m ²	44.0 (12.6)	43.6 (12.6)	41.7 (11.5)	41.8 (11.9)
UACR,mg/g, median (IQR)	1024.5 (472.5–2111.0)	1004.5 (493.2–2017.0)	870.5 (472.0–1533.5)	841.5 (458.5–1554.5)
HbA1c,%, mean (SD)	7.8 (1.7)	7.8 (1.6)	5.6 (0.4)	5.6 (0.4)
History of cardiovascular disease, n (%) [*]	640 (44.0)	641 (44.2)	173 (24.8)	156 (22.2)
Prior cardiovascular medication, n (%)				
ACE inhibitors	451 (31.0)	443 (30.5)	222 (31.9)	238 (34.0)
ARB	984 (67.6)	974 (67.1)	460 (66.0)	452 (64.5)
Calcium channel blockers	767 (52.7)	782 (53.9)	307 (44.0)	327 (46.6)
Dihydropyridine [†]	738 (96.2)	759 (97.1)	293 (95.4)	313 (95.7)
Nondihydropyridine [‡]	29 (3.8)	23 (2.9)	14 (4.6)	14 (4.3)
β -blockers	627 (43.1)	640 (44.1)	219 (31.4)	194 (27.7)
Diuretics	718 (49.3)	747 (51.5)	210 (30.1)	207 (29.5)
MRA	82 (5.6)	89 (6.1)	27 (3.9)	31 (4.4)
Antithrombotic agents [§]	820 (56.4)	829 (57.1)	202 (29.0)	191 (27.2)
Lipid-lowering agents	209 (14.4)	243 (16.7)	111 (15.9)	82 (11.7)

ACE indicates angiotensin-converting enzyme; ARB, angiotensin receptor blocker; BMI, body mass index; eGFR, estimated glomerular filtration rate; HbA1c, hemoglobin A1c; IQR, interquartile range; MRA, mineralocorticoid receptor antagonist; and UACR, urine albumin:creatinine ratio.

^{*}Coronary heart disease, cerebrovascular disease, peripheral artery disease, heart failure, valvular heart disease, atrial fibrillation or atrial flutter, ventricular arrhythmia, pulmonary embolism, and cardiac devices other than those used for cardiac resynchronization therapy.

[†]Includes amlodipine, nifedipine, isradipine, felodipine, nicardipine, and nisoldipine.

[‡]Includes diltiazem and verapamil.

[§]Antiplatelet agents and anticoagulants.

demographic and clinical characteristics of participants in each of the randomized groups (dapagliflozin versus placebo) stratified by diabetes status, including baseline use/nonuse of cardiovascular medications.

Cardiovascular medications were generally used more frequently in patients with diabetes, but there were no material differences in the proportion of patients using cardiovascular medications by randomized group. Of the 4304 randomized participants, 4224 (98.1%) were receiving a RAAS inhibitor at baseline, with roughly twice as many patients treated with ARBs as compared with ACE inhibitors. Among the 4296 (99.9%) participants with available data on baseline RAAS inhibitor dose, 1231 (28.6%), 1867 (43.5%), and 1068 (24.8%) were prescribed 100% (or more), 50 to <100%, and <50% of the maximum labeled antihypertensive dose, respectively, and 130 (3.0%) were not prescribed RAAS inhibitors.

Efficacy of Dapagliflozin by Baseline Use/Nonuse of Cardiovascular Medications

Figure 1 shows the effects of dapagliflozin on the primary composite end point in randomized

participants by use/nonuse of cardiovascular medications. Figure 2A through 2C show corresponding effects of dapagliflozin on the secondary efficacy end points. While there were slight differences in the point estimates for the relative and absolute risk reductions across use/nonuse of specific cardiovascular medications, there was no clear evidence of heterogeneity. In other words, there was no evidence that the beneficial effects of dapagliflozin were enhanced or diminished by any of the cardiovascular medications examined.

Relative Efficacy of Dapagliflozin by Baseline Dose of RAAS Inhibitors

Among patients randomized to placebo, event rates for the primary composite end point were highest among the 3.0% of participants untreated with RAAS inhibitors (13.2 events per 100 patient-years); event rates were similar among the 3 other RAAS inhibitor dose groups (7.1, 8.1, and 6.0 events per 100 patient-years for 100% [or more], 50 to <100%, and <50% of the maximum labeled antihypertensive dose, respectively). Dapagliflozin compared with placebo consistently reduced the risk of the primary and secondary

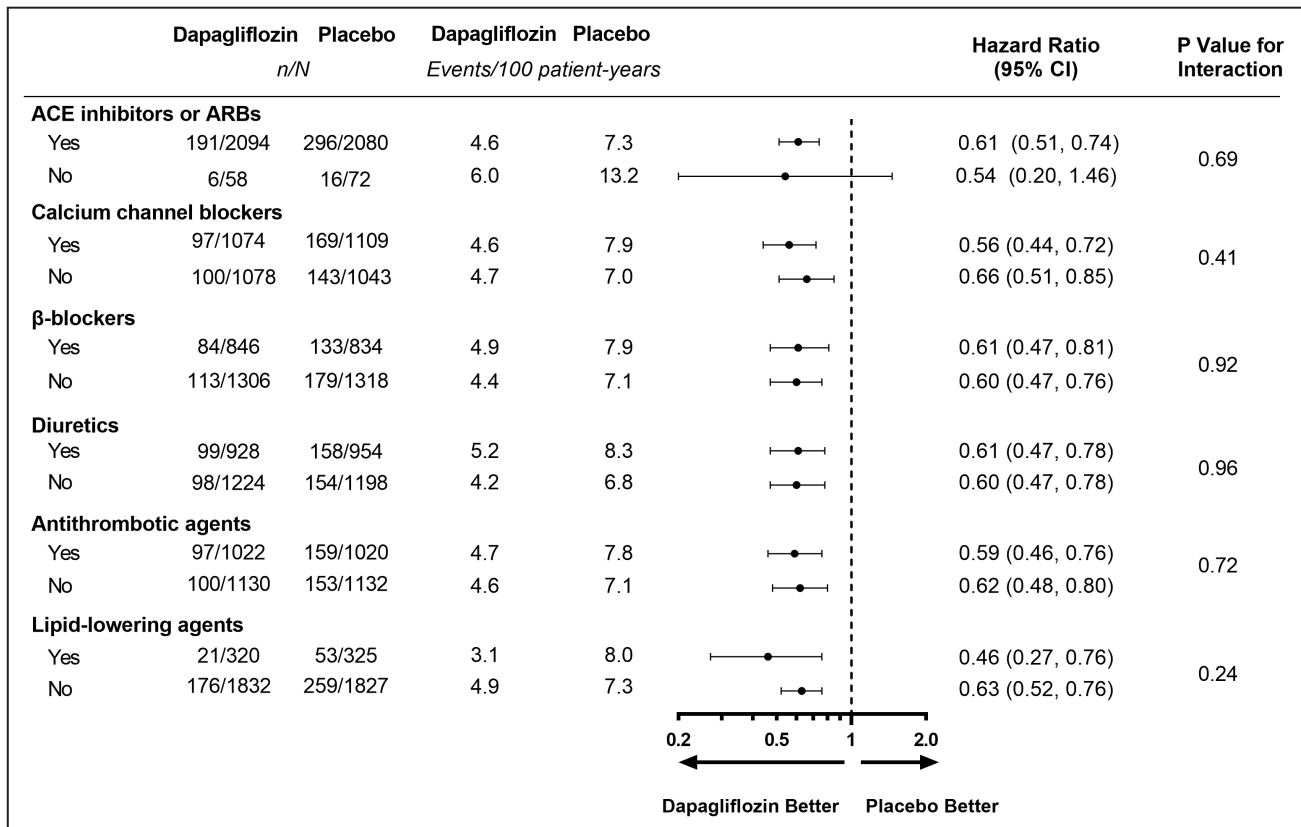


Figure 1. Primary composite end point by cardiovascular medication use/nonuse at baseline. Primary composite end point: ≥50% decline in eGFR, end-stage kidney disease, or death from a kidney or cardiovascular cause. ACE indicates angiotensin-converting enzyme; ARB, angiotensin receptor blocker; and eGFR, estimated glomerular filtration rate.

Downloaded from http://ahajournals.org by on May 10, 2023

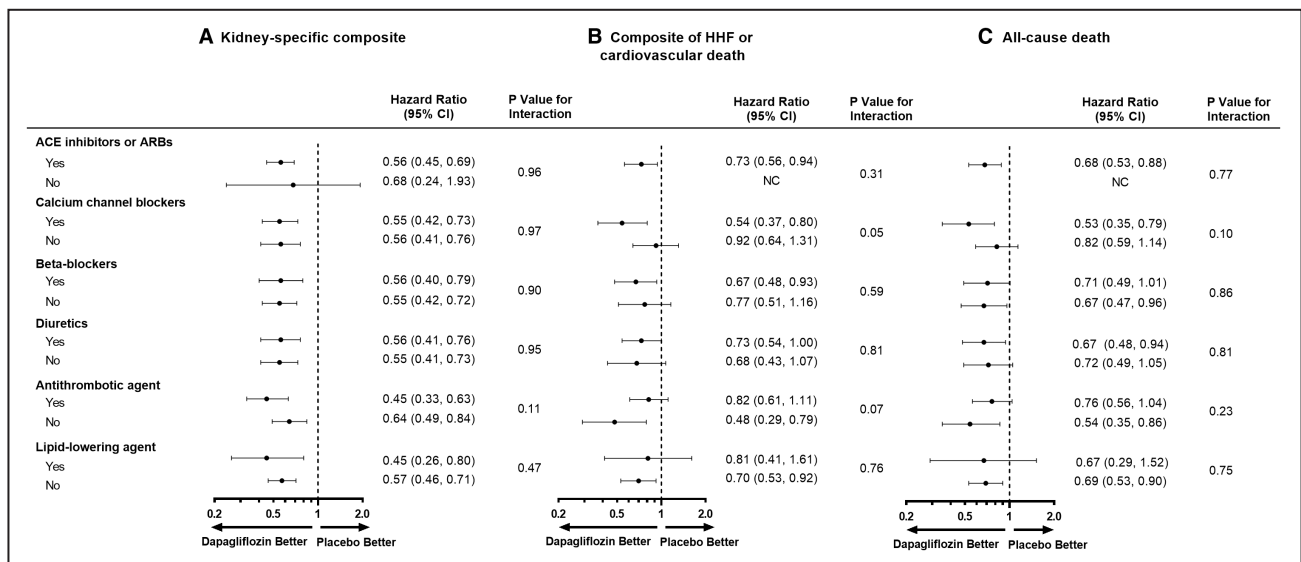


Figure 2. Secondary end points (A, kidney-specific composite; B, composite of HHF or cardiovascular death; and C, all-cause death) by cardiovascular medication use/nonuse at baseline.

Kidney-specific composite end point: $\geq 50\%$ decline in eGFR, end-stage kidney disease, or death from a kidney cause. ACE indicates angiotensin-converting enzyme; ARB, angiotensin receptor blocker; eGFR, estimated glomerular filtration rate; and HHF, hospitalization for heart failure; NC, not calculable.

end points irrespective of the RAAS inhibitor dose group (Figure 3).

The effects of dapagliflozin (versus placebo) on attenuating the decline in eGFR was evident irrespective of the dose of the prescribed RAAS inhibitor dose (Figure S1, interaction $P=0.88$).

Safety of Dapagliflozin by Baseline Use/Nonuse of Cardiovascular Medications

Table 2 shows a summary of serious adverse events and adverse events leading to discontinuation in patients stratified by baseline use/nonuse of cardiovascular medications, with safety outcomes by RAAS inhibitor dose in Table S1. We were particularly interested in whether concomitant use of dapagliflozin and diuretic agents (used in the treatment of heart failure or hypertension) would increase the risk of hypotension, acute kidney injury, falls, or other complications, owing to the natriuretic effects of dapagliflozin. At baseline, 1056 (24.6%) patients were treated with loop diuretics, and 906 (21.1%) were treated with thiazide diuretics. We did not observe an increased risk of serious adverse events with concomitant dapagliflozin and diuretic use. While the proportion of patients treated with diuretics at baseline who experienced an adverse event leading to discontinuation of study drug was numerically higher among patients randomized to dapagliflozin compared with those randomized to placebo, the favorable effects of dapagliflozin on the primary composite end point were similar among patients treated and not treated with loop diuretics (interaction $P=0.86$)

and those treated and not treated with thiazide diuretics (interaction $P=0.46$).

DISCUSSION

We conducted this prespecified analysis to determine whether a variety of commonly prescribed cardiovascular medications modified the safety and efficacy of dapagliflozin in patients with CKD, with and without type 2 diabetes, a sizeable fraction of whom have underlying cardiovascular disease, including coronary, cerebral and peripheral arterial disease, heart failure, atrial fibrillation, and hypercholesterolemia. We found consistent benefits of dapagliflozin on the primary composite end point, as well as on the secondary end points, among patients treated and not treated with diuretics (loop diuretic, thiazide diuretic, or mineralocorticoid receptor antagonists), calcium channel blockers, β -adrenergic antagonists, antithrombotic agents (antiplatelet agents or anticoagulants), and lipid-lowering medications. Moreover, we found no evidence that use of any of these medication classes modified the safety profile of dapagliflozin.

In addition to examining whether cardiovascular medications modified the effects of dapagliflozin in this population, we took the opportunity to examine the effects of dapagliflozin in patients based on baseline dosing of ACE inhibitors or ARBs. While higher doses of ACE inhibitors or ARBs are generally thought to afford patients a greater benefit than lower doses,⁶ dosing in practice is frequently limited by hypotension

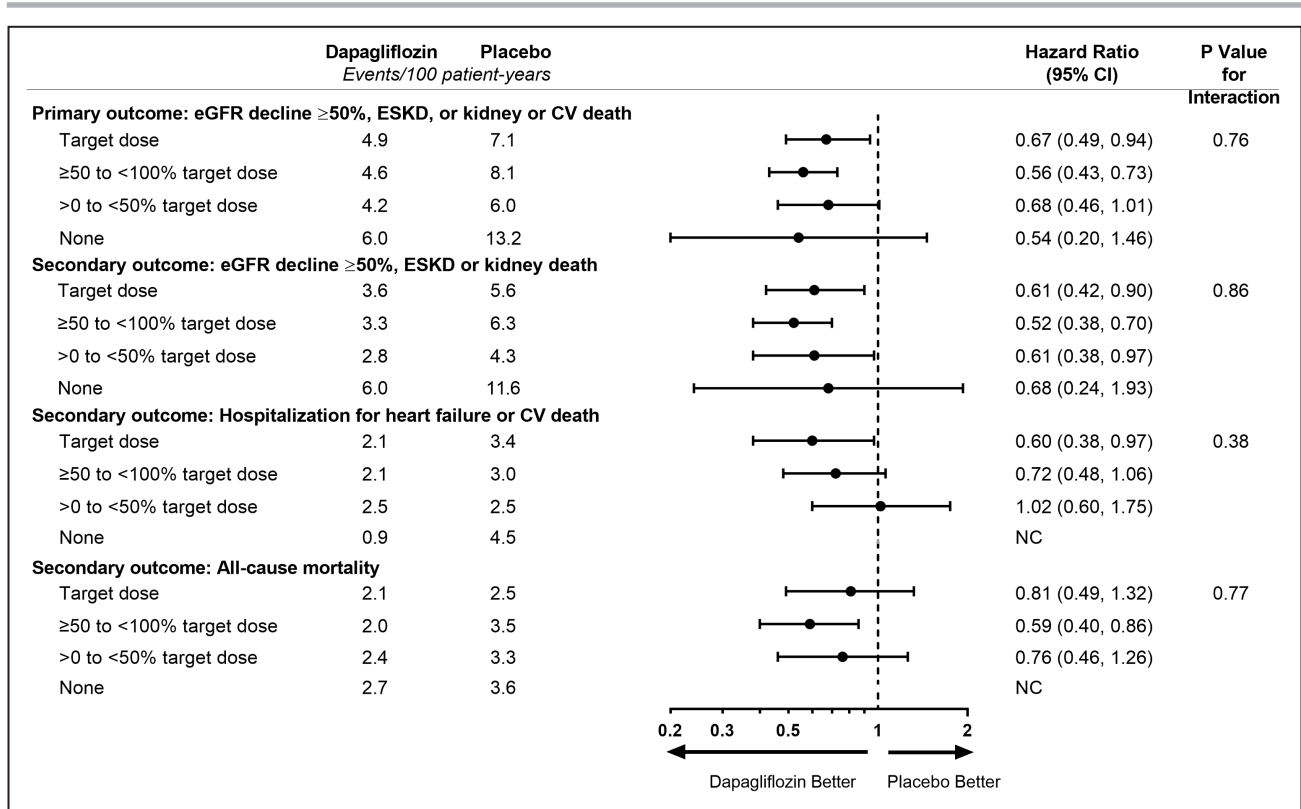


Figure 3. Primary and secondary end points by baseline ARB or ACEi dose.

ACEi indicates angiotensin-converting enzyme inhibitor; ARB, angiotensin receptor blocker; CV, cardiovascular; eGFR, estimated glomerular filtration rate; ESKD, end-stage kidney disease; and NC, not calculable.

or hyperkalemia, and some patients are intolerant of troublesome side effects (eg, cough) or serious allergic reactions (eg, angioedema) seen more frequently with ACE inhibitors. We found consistent relative and absolute benefits of dapagliflozin across the range of RAAS inhibitor doses.

Our results generally confirm findings observed in other populations treated with dapagliflozin and in patients with diabetic kidney disease treated with dapagliflozin and other SGLT2 inhibitors. In the DAPA-HF trial, in which the primary composite end point was cardiovascular death or worsening heart failure, Docherty et al found consistent benefits of dapagliflozin by use/nonuse or dose of a variety of background heart failure treatments, including diuretics, RAAS inhibitors, and β-adrenergic antagonists in patients with heart failure with reduced ejection fraction.⁷ Verma et al found similar results in the EMPEROR-Reduced trial in which patients were randomized to empagliflozin or placebo⁸; both studies also examined effects of SGLT2 inhibitors with and without background use of guideline-concordant therapies in combination. These analyses did not examine effects of background heart failure therapies on incidence or progression of kidney disease. In an analysis of data from the EMPA-REG OUTCOME trial, Mayer et al showed that the effects of empagliflozin on a classic kidney composite end point

(ie, doubling of serum creatinine, initiation of dialysis, or death due to kidney disease) were consistent among patients irrespective of baseline use/nonuse of diuretics, calcium channel blockers, and RAAS inhibitors.⁹ The analyses we present here confirm and extend previously published findings by documenting the safety and efficacy of dapagliflozin with use/nonuse of a wide range of cardiovascular medications, demonstrating benefits on kidney end points among patients with and without type 2 diabetes, and among patients with mild, moderate, and advanced CKD, populations at higher risk of adverse drug effects relative to persons with normal or near normal kidney function.

While the effects of antithrombotic and lipid-lowering agents on kidney function are not as profound as those of other cardiovascular drugs that alter renal hemodynamics, including diuretics, RAAS inhibitors, β-adrenergic antagonists, and calcium channel blockers, antiplatelet agents, anticoagulants, statins, and other lipid-lowering agents are commonly prescribed in patients with CKD, particularly those with type 2 diabetes, a history of cardiovascular events, and atrial fibrillation. The demonstrated safety of coadministration of dapagliflozin with a range of antithrombotic and lipid-lowering agents should allow patients to enjoy the benefits of dapagliflozin on reducing risks of heart failure and progressive kidney

Table 2. SAEs and AEs Leading to Discontinuation in Patients Stratified by Baseline Use/Nonuse of Cardiovascular Medications

AE, n/N (%)	With use of cardiovascular medication		Without use of cardiovascular medication	
	Dapagliflozin	Placebo	Dapagliflozin	Placebo
ACEi use				
Any AE leading to discontinuation of the study drug	39/673 (5.8)	30/678 (4.4)	79/1476 (5.4)	93/1471 (6.3)
Any SAE*	211/673 (31.4)	229/678 (33.8)	422/1476 (28.6)	500/1471 (34.0)
ARB use				
Any AE leading to discontinuation of the study drug	76/1441 (5.3)	86/1426 (6.0)	42/708 (5.9)	37/723 (5.1)
Any SAE*	406/1441 (28.2)	482/1426 (33.8)	227/708 (32.1)	247/723 (34.2)
Calcium channel blocker use				
Any AE leading to discontinuation of the study drug	56/1073 (5.2)	67/1108 (6.0)	62/1076 (5.8)	56/1041 (5.4)
Any SAE*	311/1073 (29.0)	412/1108 (37.2)	322/1076 (29.9)	317/1041 (30.5)
β-blocker use				
Any AE leading to discontinuation of the study drug	44/843 (5.2)	46/833 (5.5)	74/1306 (5.7)	77/1316 (5.9)
Any SAE*	292/843 (34.6)	345/833 (41.4)	341/1306 (26.1)	384/1316 (29.2)
Diuretic use				
Any AE leading to discontinuation of the study drug	56/927 (6.0)	57/953 (6.0)	62/1222 (5.1)	66/1196 (5.5)
Any SAE*	330/927 (35.6)	391/953 (41.0)	303/1222 (24.8)	338/1196 (28.3)
Antithrombotic agent use				
Any AE leading to discontinuation of the study drug	52/1022 (5.1)	62/1018 (6.1)	66/1127 (5.9)	61/1131 (5.4)
Any SAE*	368/1022 (36.0)	414/1018 (40.7)	265/1127 (23.5)	315/1131 (27.9)
Lipid-lowering agent use				
Any AE leading to discontinuation of the study drug	18/320 (5.6)	25/325 (7.7)	100/1829 (5.5)	98/1824 (5.4)
Any SAE*	99/320 (30.9)	120/325 (36.9)	534/1829 (29.2)	609/1824 (33.4)

ACEi indicates angiotensin-converting enzyme inhibitor; AE, adverse event; ARB, angiotensin receptor blockers; and SAE, serious adverse event.

*Includes death.

disease, while safely deriving the benefits of treatment with other agents aimed to reduce complications of atherosclerotic vascular disease and to prevent ischemic and cardioembolic stroke.

RAAS inhibitors were initially shown to slow the progression of CKD more than 2 decades before publication of the CREDENCE and DAPA-CKD trial results.^{10–13} It is essential that we understand how best to deliver RAAS inhibitors and SGLT2 inhibitors in combination, particularly among patients with moderate-to-advanced CKD who experience relatively high rates of hyperkalemia. Dapagliflozin was efficacious irrespective of the level of the participants' maximally tolerated RAAS inhibitor dose, when the latter was described as the proportion of the maximal daily antihypertensive dose as outlined in the respective product label. Nearly three-quarters of participants were treated with an ACE inhibitor or ARB at doses 50% or more of the maximal daily antihypertensive dose, ensuring that placebo-treated patients were receiving guideline-concordant

care for CKD with albuminuria. A similar distribution of dosing of background ACE inhibitor or ARB therapy was recently reported from the FIDELIO-DKD trial.¹⁴

While the bulk of the analyses presented here address efficacy end points, the safety findings are equally if not more meaningful. Despite theoretical risks associated with coadministration of SGLT2 inhibitors and diuretics, RAAS inhibitors, β-adrenergic antagonists, and calcium channel blockers, we saw no increase in serious adverse events or adverse events of special interest when these agents were used in combination with dapagliflozin, or when several of these agents were used in combination. Indeed, serious adverse events were less frequent among patients treated with dapagliflozin compared with placebo.

There are several limitations to these analyses. First, while we can definitively state that there was no evidence of heterogeneity of the dapagliflozin effect depending on use/nonuse of cardiovascular medications or in the case of RAAS inhibitors, the proportion of

maximum labeled antihypertensive dose at baseline, the power to detect interactions was limited, and we may have missed subtle but clinically meaningful accentuation or attenuation of effects that might be evident in larger patient samples. It may be informative to repeat these analyses using population-based (“real world”) samples in future years. Second, given differences in practice patterns among and within geographic regions, we were unable to examine effect modification by individual agents, as the modest sample size of the trial required us to explore these interactions by drug class. Finally, although the broad inclusion criteria for the DAPA-CKD trial resulted in inclusion of participants with many underlying causes of CKD, we had insufficient power to determine whether any cardiovascular drug class or individual agent exerted unique modifying effects in patients with immunoglobulin A nephropathy, focal segmental glomerulosclerosis, membranous nephropathy, or other specific causes of CKD.

CONCLUSIONS

In summary, the safety profile and efficacy of dapagliflozin on kidney and cardiovascular end points in patients with CKD were consistent among patients treated and not treated with a range of cardiovascular medications.

ARTICLE INFORMATION

Received November 4, 2022; accepted March 3, 2023.

Affiliations

Departments of Medicine, Epidemiology and Population Health, and Health Policy, Stanford University School of Medicine, Stanford, CA (G.M.C.); Instituto Nacional de Ciencias Médicas y Nutrición Salvador Zubirán, Mexico City, Mexico (R.C.); Department of Clinical Pharmacy and Pharmacology, University of Groningen, University Medical Centre Groningen, Groningen, The Netherlands (P.V., N.J., H.J.H.); Institute of Cardiovascular and Medical Sciences, University of Glasgow, Glasgow, UK (J.J.M.); Steno Diabetes Center Copenhagen, Herlev, Denmark (P.R.); Department of Clinical Medicine, University of Copenhagen, Copenhagen, Denmark (P.R.); Late-Stage Development, Cardiovascular, Renal and Metabolism, BioPharmaceuticals R&D, AstraZeneca, Gothenburg, Sweden (A.M.L., C.D.S.); Department of Internal Medicine, UT Southwestern Medical Center, Dallas, TX (R.D.T.); Department of Renal Medicine, University College London, London, UK (D.C.W.); and The George Institute for Global Health, Sydney, Australia (H.J.H.).

Acknowledgments

The authors thank all patients, investigators, and research teams for their time spent on the DAPA-CKD trial. Editorial support was provided by Lise Magnollay and Nicola Truss, inScience Communications, Springer Healthcare Ltd, London, UK, and funded by AstraZeneca.

Sources of Funding

This study was funded by AstraZeneca. The funder of the study was involved in the study design, data analysis, data interpretation, writing of the report, and the decision to submit the paper for publication.

Disclosures

Dr Chertow has received fees from AstraZeneca for service on the DAPA-CKD trial steering committee. He serves on the Board of Directors for Satellite Healthcare. He has served on other trial steering committees for Akebia, AstraZeneca, Gilead, Sanifit, and Vertex, and on data safety

monitoring boards for Bayer, Mineralys, and ReCor. He has served as an advisor and received fees and/or stock options from Ardelyx, CloudCath, Durect, Mirromatrix, Outset, and Unicycive. He has received research grants from the National Institute of Diabetes and Digestive and Kidney Diseases, National Heart, Lung, and Blood Institute, and National Institute of Allergy and Infectious Diseases. Dr Correa-Rotter has received fees from AbbVie, AstraZeneca, GlaxoSmithKline, Medtronic, and Boehringer Ingelheim, and has lectured for Amgen, Janssen, Takeda, AstraZeneca, and Boehringer Ingelheim and has received research support from GlaxoSmithKline, Novo Nordisk, and AstraZeneca. P. Vart reports receiving a travel grant from AstraZeneca. Dr McMurray has received payments to his employer, Glasgow University, for his work on clinical trials, consulting, and other activities from AstraZeneca, Cytokinetics, KBP Biosciences, Amgen, Bayer, Theracos, Ionis Pharmaceuticals, Dalcour Pharmaceuticals, Novartis, GlaxoSmithKline, Bristol Myers Squibb, Boehringer Ingelheim, Cardurion, and Alnylam, and has received personal lecture fees from Abbott, Alkem Metabolics, Eris Life Sciences, Hickma, Lupin, Sun Pharmaceuticals, Medscape/Heart.org, ProAdWise Communications, Radcliffe Cardiology, Servier, and the Corpus. Dr Rossing has received fees to Steno Diabetes Center Copenhagen for: steering group membership and/or lectures and advice from AstraZeneca, Novo Nordisk, Bayer, and Eli Lilly; advisory board participation from Sanofi Aventis and Boehringer Ingelheim; and steering group participation from Gilead. Dr Langkilde and Dr Sjöström are employees and stockholders of AstraZeneca. Dr Toto is a member of the Executive Committee of the DAPA-CKD study, has received consulting fees from Boehringer Ingelheim, Reata Pharma, and Chinook, and payment from Medscape and Medical Education Resources, participated in advisory boards for Bayer and Vioforand on data monitoring committees for Akebia and Otsuka.

Dr Wheeler has received consultancy fees from AstraZeneca and personal fees from Amgen, Astellas, Bayer, Boehringer Ingelheim, Gilead, GlaxoSmithKline, Janssen, Napp, Mundipharma, Reata, Tricida, Vifor Fresenius, Merck Sharp and Dohme, ProKidney, Galderma, and Zydus. H.J.L. Heerspink has received honoraria (paid to his institution [University Medical Center Groningen]) for participation in steering committees from AstraZeneca, Janssen, Gilead, Bayer, Chinook, and CSL Pharma; honoraria for participation in advisory boards from Merck, Mitsubishi Tanabe, Janssen, and Mundipharma; fees for consultancy from AstraZeneca, AbbVie, Retrophin, Boehringer Ingelheim, and Novo Nordisk; and research grant support from AstraZeneca, AbbVie, Janssen, and Boehringer Ingelheim. The remaining authors have no disclosures to report.

Supplemental Material

Data S1:

REFERENCES

1. Wheeler DC, Stefánsson BV, Batiushin M, Bilchenko O, Cherney DZI, Chertow GM, Douthett W, Dwyer JP, Escudero E, Pecoits-Filho R, et al. The dapagliflozin and prevention of adverse outcomes in chronic kidney disease (DAPA-CKD) trial: baseline characteristics. *Nephrol Dial Transplant*. 2020;35:1700–1711. doi: 10.1093/ndt/gfaa234
2. Perkovic V, Jardine MJ, Neal B, Bompoint S, Heerspink HJL, Charytan DM, Edwards R, Agarwal R, Bakris G, Bull S, et al. Canagliflozin and renal outcomes in type 2 diabetes and nephropathy. *N Engl J Med*. 2019;380:2295–2306. doi: 10.1056/NEJMoa1811744
3. Zinman B, Wanner C, Lachin JM, Fitchett D, Bluhmki E, Hantel S, Mattheus M, Devins T, Johansen OE, Woerle HJ, et al. Empagliflozin, cardiovascular outcomes, and mortality in type 2 diabetes. *N Engl J Med*. 2015;373:2117–2128. doi: 10.1056/NEJMoa1504720
4. Wiviott SD, Raz I, Bonaca MP, Mosenzon O, Kato ET, Cahn A, Silverman MG, Zelniker TA, Kuder JF, Murphy SA, et al. Dapagliflozin and cardiovascular outcomes in type 2 diabetes. *N Engl J Med*. 2018;380:347–357. doi: 10.1056/NEJMoa1812389
5. McMurray JJV, Wheeler DC, Stefánsson BV, Jongs N, Postmus D, Correa-Rotter R, Chertow GM, Greene T, Held C, Hou FF, et al. Effect of dapagliflozin on clinical outcomes in patients with chronic kidney disease, with and without cardiovascular disease. *Circulation*. 2021;143:438–448. doi: 10.1161/CIRCULATIONAHA.120.051675
6. Hou FF, Xie D, Zhang X, Chen PY, Zhang WR, Liang M, Guo ZJ, Jiang JP. Renoprotection of optimal antiproteinuric doses (ROAD) study: a randomized controlled study of benazepril and losartan in chronic renal insufficiency. *J Am Soc Nephrol*. 2007;18:1889–1898. doi: 10.1681/ASN.2006121372

7. Docherty KF, Jhund PS, Inzucchi SE, Køber L, Kosiborod MN, Martinez FA, Ponikowski P, DeMets DL, Sabatine MS, Bengtsson O, et al. Effects of dapagliflozin in DAPA-HF according to background heart failure therapy. *Eur Heart J*. 2020;41:2379–2392. doi: [10.1093/eurheartj/ehaa183](https://doi.org/10.1093/eurheartj/ehaa183)
8. Verma S, Dhingra NK, Butler J, Anker SD, Ferreira JP, Filippatos G, Januzzi JL, Lam CSP, Sattar N, Peil B, et al. Empagliflozin in the treatment of heart failure with reduced ejection fraction in addition to background therapies and therapeutic combinations (EMPEROR-reduced): a post-hoc analysis of a randomised, double-blind trial. *Lancet Diabetes Endocrinol*. 2022;10:35–45. doi: [10.1016/S2213-8587\(21\)00292-8](https://doi.org/10.1016/S2213-8587(21)00292-8)
9. Mayer GJ, Wanner C, Weir MR, Inzucchi SE, Koitka-Weber A, Hantel S, von Eynatten M, Zinman B, Cherney DZI. Analysis from the EMPA-REG OUTCOME® trial indicates empagliflozin may assist in preventing the progression of chronic kidney disease in patients with type 2 diabetes irrespective of medications that alter intrarenal hemodynamics. *Kidney Int*. 2019;96:489–504. doi: [10.1016/j.kint.2019.02.033](https://doi.org/10.1016/j.kint.2019.02.033)
10. Brenner BM, Cooper ME, de Zeeuw D, Keane WF, Mitch WE, Parving H-H, Remuzzi G, Snapinn SM, Zhang Z, Shahinfar S. Effects of losartan on renal and cardiovascular outcomes in patients with type 2 diabetes and nephropathy. *N Engl J Med*. 2001;345:861–869. doi: [10.1056/NEJMoa011161](https://doi.org/10.1056/NEJMoa011161)
11. Lewis EJ, Hunsicker LG, Clarke WR, Berl T, Pohl MA, Lewis JB, Ritz E, Atkins RC, Rohde R, Raz I. Renoprotective effect of the angiotensin-receptor antagonist irbesartan in patients with nephropathy due to type 2 diabetes. *N Engl J Med*. 2001;345:851–860. doi: [10.1056/NEJMoa011303](https://doi.org/10.1056/NEJMoa011303)
12. The GISEN Group (Gruppo Italiano di Studi Epidemiologici in Nefrologia). Randomised placebo-controlled trial of effect of ramipril on decline in glomerular filtration rate and risk of terminal renal failure in proteinuric, non-diabetic nephropathy. *The Lancet*. 1997;349:1857–1863. doi: [10.1016/S0140-6736\(96\)11445-8](https://doi.org/10.1016/S0140-6736(96)11445-8)
13. Maschio G, Alberti D, Janin G, Locatelli F, Mann JF, Motolese M, Ponticelli C, Ritz E, Zucchelli P. Effect of the angiotensin-converting-enzyme inhibitor benazepril on the progression of chronic renal insufficiency. The angiotensin-converting-enzyme inhibition in progressive renal insufficiency study group. *N Engl J Med*. 1996;334:939–945. doi: [10.1056/NEJM199604113341502](https://doi.org/10.1056/NEJM199604113341502)
14. Bakris GL, Agarwal R, Anker SD, Pitt B, Ruilope LM, Rossing P, Kolkhof P, Nowack C, Schloemer P, Joseph A, et al. Effect of finerenone on chronic kidney disease outcomes in type 2 diabetes. *N Engl J Med*. 2020;383:2219–2229. doi: [10.1056/NEJMoa2025845](https://doi.org/10.1056/NEJMoa2025845)

SUPPLEMENTAL MATERIALS

Members of the DAPA-CKD Executive Committee

Hiddo J.L. Heerspink (Co-chair; University Medical Center Groningen, Groningen, The Netherlands); David C. Wheeler (Co-chair; University College London, London, UK); Glenn Chertow (Stanford University School of Medicine, Palo Alto, CA, USA); Ricardo Correa-Rotter (National Medical Science and Nutrition Institute Salvador Zubirán, Mexico City, Mexico); Tom Greene (University of Utah Health Sciences, Salt Lake City, UT, USA); Fan Fan Hou (Southern Medical University, Guangzhou, China); John McMurray (University of Glasgow, Glasgow, UK); Peter Rossing (Steno Diabetes Centre, Gentofte, Denmark); Robert Toto (UT Southwestern Medical Center, Dallas, TX, USA); Bergur Stefansson (AstraZeneca, Gothenburg, Sweden); Anna Maria Langkilde (AstraZeneca, Gothenburg, Sweden).

Members of the DAPA-CKD Independent Data Monitoring Committee

Marc A. Pfeffer (Chair; Brigham and Women's Hospital, Boston, USA); Stuart Pocock, (London School of Hygiene and Tropical Medicine, London, UK); Karl Swedberg, (University of Gothenburg, Gothenburg, Sweden); Jean L. Rouleau (Montréal Heart Institute, Montreal, Québec, Canada); Nishi Chaturvedi (University College London, London, UK); Peter Ivanovich (Northwestern University, Chicago, USA); Andrew S. Levey (Tufts Medical School, Boston, USA); Heidi Christ-Schmidt (Statistics Collaborative, Washington DC, USA).

Members of the DAPA-CKD Event Adjudication Committee

Claes Held, Professor (Chair; Uppsala Clinical Research Center, Sweden); Christina Christersson (Co-Chair; Uppsala Clinical Research Center, Sweden); Johannes Mann (Co-chair; University of Erlangen-Nürnberg, Munich, Germany); Christoph Varenhorst (Co-chair; Uppsala Clinical Research Center, Sweden).

DAPA-CKD Investigators

Argentina:

L. E. Maffei, Centro Medico Dra Laura Maffei, Buenos Aires; P. Raffaele, Fundacion Favalaro, Ciudad Autonoma Buenos Aires; S. E. Solis, Centro Diabetologico, Cordoba; C. A. Arias, CEMEDIC, Ciudad Autonoma Buenos Aires; D. Aizenberg, Centro Medico Viamonte, CABA; C. Luquez, Centro Medico Luquez, Cordoba; C. Zaidman, CIPREC, CABA; N. Cluigt, Instituto de Investigaciones Clinicas Mar del Plata, Mar del Plata; M. Mayer, Centro de Salud e Investigaciones Medicas, Santa Rosa; A. Alvarisqueta, Centro de Investigaciones Medicas, Mar del Plata; A. Wassermann, FEPREVA, CABA; R. Maldonado, Clinica Privada Velez Sarsfield, Cordoba; J. Bittar, Renal SRL Centro Privado De Nefrologia, San Luis; M. Maurich, Instituto de Cardiologia de Corrientes 'J.F.Cabral', Corrientes; L. E. Gaité, Clinica de Nefrologia, Santa Fe; N. Garcia, Blossom DMO, Cordoba; L. Sivak, GEMA Consultorios Medicos, Buenos Aires; P. O. Ramallo, Centro Modelo de Cardiologia, San Miguel de

Tucuman; J. C. Santos, Investigaciones Clinicas Tucuman, San Miguel de Tucuman; R. Garcia Duran, Instituto de Investigaciones Clinicas San Nicolas, San Nicolas; J. A. Oddino, Insituto Medico de la Fundacion Estudios Clinicos, Rosario; A. Maranon, Consultorios Medicos Belloni, Nueve de julio

Brazil:

L. N. Maia, Hospital de Base Sao Jose do Rio Preto, Sao Jose do Rio Preto; D. D Avila, Hospital Sao Lucas da PUCRS, Porto Alegre; E. J. G. Barros, Hospital de Clinicas de Porto Alegre, Porto Alegre; M. H. Vidotti, Loema - Instituto de Pesquisa Clinica, Campinas; D. Panarotto, IPCEM - Centro de Ciencias da Saude -Universidade de Caxias, Caxias do Sul; I. D. L. Noronha, Hospital das Clinicas da FMUSP, Sao Paulo; L. A. A. Turatti, CPQuali Pesquisa Clinica Ltda, Sao Paulo; L. Deboni, Fundacao Pro-Rim, Joinville; M. E. Canziani, Hospital do Rim e Hipertensao - UNIFESP, Sao Paulo; M. C. Riella, Instituto Scribner, Curitiba; M. R. Bacci, Praxis Pesquisa Medica, Santo Andre; R. P. Paschoalin, Centro de Estudos Clinica Senhor do Bonfim, Salvador; R. J. Franco, Universidade Estadual de Sao Paulo, Botucatu; J. C. Goldani, Irmandade Santa Casa de Misericordia de Porto Alegre, Porto Alegre

Canada:

E. St-Amour, Q and T Research Outaouais Incorporated, Gatineau; A. W. Steele, Lakeridge Health Oshawa, Oshawa; R. Goldenberg, LMC Clinical Research Inc. (Thornhill), Concord; S. Pandeya, Pandeya Kidney Centre, Oakville; H. Bajaj, LMC Clinical Research Inc, Brampton; D. Cherney, The Toronto Hospital, Toronto; S. M. Kaiser, Nova Scotia Health Authority, Halifax; J. R. Conway, Diabetes Clinic, Smiths Falls; S. S. Chow, Stephen S. Chow Medicine Professional Corporation, Toronto; G. Bailey, Red Deer Medical Centre, Red Deer; J. Lafrance, CIUSSS-estmtl Hopital Maisonneuve-Rosemont, Montreal; J. Winterstein, C-health, Edmonton; S. Cournoyer, CISSSMC - Hospital Charles Le Moyne, Greenfield Park; D. Gaudet, ECOGENE-21, Chicoutimi; F. Madore, Hopital du Sacre-Coeur de Montreal, Montreal; R. L. Houlden, Kingston Health Sciences Centre, Kingston; A. Dowell, Dynamik Research Inc, Pointe-Claire; M. Langlois, CHUS - Hospital Fleurimont, Sherbrooke; N. Muirhead, London Health Sciences Centre, London; H. Khandwala, LMC Clinical Research Inc (Etobicoke), Etobicoke; A. Levin, St Pauls Hospital, Vancouver

China:

F. Hou, Nanfang Hospital of Nanfang medical university, Guangzhou; Y. Xue, Nanfang Hospital of Nanfang medical university, Guangzhou; L. Zuo, Peking university people's hospital, Beijing; C. Hao, Huashan Hospital Affiliated to Fudan University, Shanghai; Z. Ni, Renji Hospital Affiliated to Shanghai Jiaotong Univ., Shanghai; C. Xing, NANJING, Nan Jin; N. Chen, Ruijin hospital Shanghai Jiaotong University of medicine, Shanghai; Y. Dong, The First Affiliated Hospital of Sun Yat-sen University, Guangzhou; R. Zhou, Yangpu

Hospital, Shanghai; X. Xiao, Xiangya Hospital Central-south University, Changsha; Y. Zou, Sichuan Academy of Medical Sciences&Sichuan Provincial Peopl, Chengdu; C. Wang, The First Affiliated Hospital of Baotou Medical College, Baotou; B. Liu, Zhongda Hospital Southeast University, Nanjing; Q. Chen, 1st Affiliated Hospital of Nanchang University, Nanchang; M. Lin, PuAi Hospital of Wuhan City, Wuhan; Q. Luo, HwaMei Hospital,University Of Chinese Academy Of Sciences, Ningbo; D. Zhang, Peking University International Hospital, Beijing; J. Wang, Lanzhou University Second Hospital, Lanzhou; M. Chen, General Hospital of Ningxia Medical University, Yinchuan; X. Wang, The First People's Hospital of YueYang, Yueyang; A. Zhong, Jiangxi Provincial People's Hospital, Nanchang; J. Dong, PuAi Hospital of Wuhan City, Wuhan; C. Zhu, Affiliated Hospital of Guizhou Medical University, Guiyang; T. Yan, Tianjin Medical University General Hospital, Tianjin; P. Luo, 2nd hospital of Jilin University, Changchun; Y. Ren, West China Hospital, Chengdu; P. Pai, The University of Hong Kong - Shenzhen Hospital, Shenzhen; D. Li, Shengjing Hospital of China Medical University, Shengyang; R. Zhang, Jilin Province people's hospital, Changchun; J. Zhang, 1st Affiliated Hospital of Beijing University, Beijing; M. Xu, Sun Yat-Sen Memorial Hospital, Guangzhou; Y. Zhuang, 900 Hospital of the Joint Logistics Team, Fuzhou; Y. Kong, Foshan 1st people hospital, Foshan; X. Yao, Jilin Central Hospital, Jilin; X. Peng, The People's Hospital of Guangxi Zhuang Autonomous Region, Nanning

Denmark:

F. I. Persson, Steno Diabetes Center Copenhagen, Gentofte; T. K. Hansen, Aarhus Universitetshospital, Aarhus; R. Borg, Sjaellands Universitetshospital, Roskilde; U. Pedersen Bjergaard, Nordsjaellands Hospital Hillerod, Hillerod; D. Hansen, Herlev Hospital, Herlev; M. Hornum, Rigshospitalet, Copenhagen

Germany:

H. Haller, Medizinische Hochschule Hannover, Hannover; G. Klausmann, Studienzentrum Aschaffenburg, Aschaffenburg; D. Tschöpe, Herz- und Diabeteszentrum NRW, Bad Oeynhausen; T. Krüger, Gemeinschaftspraxis Karlstrasse, Düsseldorf; P. Gross, Studienzentrum Metabolisch-Vaskuläre Medizin, Dresden; C. Hugo, Universitätsklinikum Carl Gustav Carus der TU Dresden, Dresden; N. Obermüller, Klinikum der Johann Wolfgang Goethe Universität, Frankfurt am Main; L. Rose, Zentrum für Diabetes und, Münster; P. Mertens, Otto-von-Guericke Universität Magdeburg, Magdeburg; H. Zeller-Stefan, InnoDiab Forschung GmbH, Essen; A. Fritsche, Klinikum der Eberhard-Karls-Universität Tübingen, Tübingen; L. Renders, Klinikum rechts der Isar der Technischen Universität, München; J. Müller, Ambulanzentrum Dr. Müller Dr. Appelt, Schweinfurt; K. Budde, Charité - Universitätsklinikum Berlin, Berlin; B. Schroppel, Universitätsklinikum Ulm, Ulm

Hungary:

I. Wittmann, Pecs Tudomanyegyetem, Pecs; P. Voros, Del-pesti Centrumkorhaz - Orszagos Hemat. es Infekt. Intezet, Budapest; M. Dudas, Bekes Megyei Kozponti Korhaz, Gyula; G. A. Tabak, Semmelweis Egyetem I Belgyogyaszati Klinika, Budapest; R. Kirschner, Flor Ferenc Korhaz, Kistarcsa; A. Letoha, SZTE AOK I. Belklinika, Szeged; I. Balku, Szabolcs-Szatmar-Bereg Megyei KHk es Egyetemi Oktatokorhaz, Nyiregyhaza; Z. Hermanyi, Bajcsy-Zsilinszky Korhaz- es Rendelointezet, Budapest; G. Zakar, Velencei-tavi Jarobeteg Szakellato Kozhasznu Nonprofit Kft, Velence; I. Mezei, Markhot Ferenc Oktatokorhaz Csecsemo- es Gyermekgyogyaszati, Eger; G. G. Nagy, Borsod-Abauj-Zemplen Megyei Korhaz es Egyetemi Oktatokorhaz, Miskolc; J. Lippai, Toth Ilona Egeszsegugyi Szolgalat, Budapest; A. Nemeth, Kanizsai Dorottya Korhaz, Nagykanizsa

India:

D. Khullar, Max Super Speciality Hospital, New Delhi; P. K. Gowdaiah, Bangalore Medical College & Research Institute, Bangalore; E. Fernando Mervin, Govt. Stanley medical college & Hospital, Chennai; V. A. Rao, St. Theresa's Hospital, Hyderabad; D. Dewan, Ajanta Hospital and IVF Center, Lucknow; K. Goplani, B. J. Medical College & Civil Hospital, Ahmedabad; V. S. K. Maddi, Sunrise Hospitals, Vijayawada; M. S. Vyawahare, Government Medical College, Nagpur; R. K. Pulichikkat, Sree Narayana Institute of Medical Sciences, Ernakulam; R. Pandey, Institute of Post Graduate Medical Education & Research, Kolkata; S. K. Sonkar, King George's Medical University, Lucknow; V. K. Gupta, Ganesh Shankar Vidyarathi Memorial Medical College, Kanpur; S. Agarwal, Ruby Hall Clinic, Pune; A. J. Asirvatham, Arthur Asirvatham Hospital, Madurai; A. Ignatius, Noble Hospital, Maharashtra; S. Chaubey, Meditrina Institute of Medical Sciences, Nagpur; S. Melemadathil, Calicut Medical College, Calicut; H. Alva, Vinaya Hospital and Research Centre, Mangalore; Y. Kadam, CIMET's Inamdar Multispeciality Hospital, Pune

Japan:

H. Shimizu, Kojunkai Daido Clinic, Nagoya-shi; A. Sueyoshi, Uji-Tokushukai Medical Center, Uji-shi; H. Takeoka, Hyogo Prefectural Amagasaki General Medical Center, Amagasaki-shi; Y. Abe, Abe Diabetes Clinic, Oita-shi; T. Imai, JA Toride Medical Center, Toride-shi; Y. Onishi, The institute for adult diseases Asahi Life Foundation, Chuo-ku; Y. Fujita, Chubu Rosai Hospital, Nagoya-shi; Y. Tokita, Fujisawa City Hospital, Fujisawa-shi; M. Oura, Yaizu City Hospital; Y. Makita, Koshigaya Municipal Hospital, Koshigaya-shi; A. Idogaki, Medical corporation Tokushukai Nozaki Tokushukai Hospital, Daito-shi; R. Koyama, Tsuchiura Kyodo General Hospital, Tsuchiura-shi; H. Kikuchi, National Hospital Organization Beppu Medical Center, Beppu-shi; N. Kashihara, Kawasaki Medical School Hospital, Kurashiki; T. Hayashi, Osaka General Medical Center, Osaka-shi; Y. Ando, National Hospital Organization Osaka Minami Medical Center, Kawachinagano-shi; T. Tanaka, National Hospital Organization Mie Chuo Medical Center, Tsu-shi; M. Shimizu, National Hospital Organization Kobe Medical Center, Kobe-shi; S. Hidaka, Shonan Kamakura General Hospital, Kamakura-shi; T. Gohda, Juntendo University Hospital,

Bunkyo-ku; K. Tamura, Yokohama City University Hospital, Yokohama-shi; M. Abe, Nihon University Itabashi Hospital, Itabashi-ku; Y. Kamijo, Shinshu University Hospital, Matsumoto-shi; T. Imasawa, National Hospital Organization Chiba East Hospital, Chiba-shi; Y. Takahashi, National Hospital Organization Shinshu Ueda Medical Center, Ueda-shi; M. Nakayama, National Hospital Organization Kyushu Medical Center, Fukuoka-shi; M. Tomita, National Hospital Organization Kumamoto Medical Center, Kumamoto-shi; F. Hirano, National Hospital Organization Asahikawa Medical Center, Asahikawa-shi; M. Nakayama, Nakayama Clinic, Nagoya-shi; Y. Fukushima, Fukuwa Clinic, Chuo-ku; A. Kiyosue, Tokyo Eki Center-Building Clinic, Chuo-ku; S. Kurioka, Medical Corporation Kyoujinkai Clinic Komatsu, Neyagawa-shi; E. Imai, Nakayamadera Imai Clini, Takarazuka-shi; K. Kitagawa, National Hospital Organization Kanazawa Medical Center, Kanazawa-shi; M. Waki, Shizuoka City Shizuoka Hospital, Shizuoka-shi; J. Wada, Okayama University Hospital, Okayama-shi; K. Uehara, Naha City Hospital, Naha-shi; H. Iwatani, National Hospital Organization Osaka National Hospital, Osaka-shi; K. Ota, National Hospital Organization Okayama Medical Center, Okayama-shi; S. Shibazaki, National Hospital Organization Hokkaido Medical Center, Sapporo-shi; K. Tamura, Shinonoi General Hospital, Nagano-shi; K. Katayama, Mie University Hospital, Tsu-shi; I. Narita, Niigata University Medical and Dental Hospital, Niigata-shi; M. Inuma, National Hospital Organization Mito Medical Center, Higashiibaraki-gun; S. Matsueda, National Hospital Organization Fukuoka-Higashi Medical Cente, Koga-shi; S. Sasaki, Iizuka Hospital, Iizuka-shi; A. Yokochi, JOHAS, Kanto Rosai Hospital, Kawasaki-shi; T. Tsukamoto, The TazukeKofukai Medical Research Institute Kitano Hospital, Osaka-shi; T. Yoshimura, Saga-Ken Medical Centre Koseikan, Saga-shi

Korea:

S. Kang, Yonsei University Severance Hospital, Seoul; S. Lee, Ewha Womans University Mokdong Hospital, Seoul; C. S. Lim, SMG - SNU Boramae Medical Center, Seoul; H. Chin, Seoul National University Bundang Hospital, Seongnam-si; K. W. Joo, Seoul National University Hospital, Seoul; S. Y. Han, Inje University Ilsan Paik Hospital, Goyang-si; T. I. Chang, National Health Insurance Service Ilsan Hospital, Goyang-si; S. Park, Kyungpook National University Hospital, Deagu; H. Park, Gangnam Severance Hospital, Seoul; C. W. Park, The Catholic University of Korea, Seoul; B. G. Han, Wonju Severance Christian Hospital, Wonju-si; D. R. Cha, Korea University Ansan Hospital, Ansan-si; S. A. Yoon, Uijeongbu St. Mary's Hospital, Uijeongbu-si; W. Kim, Chonbuk National University Hospital, Jeonju-si; S. W. Kim, Chonnam National University Hospital, Gwangju; D. Ryu, Ewha Womans University Seoul Hospital, Seoul

Mexico:

R. Correa Rotter, Inst Nac de Ciencias Medicas y Nutricion Salvador Zubiran, D.F; S. S. Irizar Santana, C. para el desarrollo de la Med y la asistencia Medica Espec, Culiacan; G. Hernandez Llamas, Estudios Clinicos de Vanguardia, Mazatlan; R. Valdez Ortiz, Hospital

General de Mexico Dr. Eduardo Liceaga, Mexico; N. C. Secchi Nicolas, Hospital General de Minatitlan, Minatitlan; G. Gonzalez Galvez, Instituto Jalisciense de Investigacion en Diabetes y Obesida, Guadalajara; J. R. Lazcano Soto, Instituto de Investigaciones Aplicadas a la Neurociencia A.C, Durango; T. Bochicchio Riccardelli, Investigacion Nefrologica S.C., Cuernavaca; E. A. Bayram Llamas, Fundacion Cardiovascular de Aguascalientes, Aguascalientes; D. R. Ramos Ibarra, Centro de Estudios de Alta Especialidad de Sinaloa, Mazatlan; M. G. S. Melo, Clinica Quirurgica de la Concepcion, Saltillo; J. G. Gonzalez Gonzalez, Hospital Universitario 'Dr. Jose Eleuterio Gonzalez', Monterrey; J. H. Sanchez Mijangos, CAIFRC OMEGA SC, Mexico; M. Madero Robalo, Instituto Nacional de Cardiologia, Mexico; A. Garcia Castillo, CardioLink Clin Trials, Monterey

Peru:

H. A. Manrique, Centro de Expertos en Diabetes, Lima; J. C. Farfan, Centro Medico Monte Carmelo, Arequipa; R. Vargas, Centro de Investigacion Endocrino y Transtornos Metabolicos, Piura; A. Valdivia, Hospital Militar Geriatrico, Chorrillos; A. Dextre, ENDOMED, San Miguel; E. Escudero, Hospital Nacional Arzobispo Loayza, Lima; J. R. Calderon Ticona, Serv de Endocrinologia y Metabolismo Clinica Senior de los M, Lima; L. Gonzales, Centro de Investigacion de Enf Metabolicas y Cardiologicas, Ica; J. Villena, Hospital Nacional Cayetano Heredia, Lima; L. Leon, Clinica Anglo Americana, Lima; G. Molina, Clinica San Pablo, Lima; A. Saavedra, Centro de Investigacion Ricardo Palma, Lima; E. Garrido, Centro de Investigacion en Endocrinologia, San Isidro; H. Arbanil, Hospital Dos de Mayo, Lima; S. Vargas Marquez, Hospital Nacional Adolfo Guevara Velasco, Cusco; J. Rodriguez, Hospital Alberto Sabogal Sologuren, Callao

Philippines:

R. Isidto, Healthlink Iloilo, Iloilo City; A. J. Villaflor, M3 Dialysis Center, Iloilo; M. A. Gumba, National Kidney and Transplant Institute, Quezon City; L. Tirador, St Pauls Hospital, Iloilo City; R. S. Comia, Amang Rodriguez Medical Center, Marikina; R. A. Sy, Ospital ng Makati Medical Center, Makati City; M. L. V. V. Guanzon, Riverside Medical Center, Bacolod; G. Aquitania, Davao Doctors Hospital, Davao City; N. C. De Asis, Norzel Medical and Diagnostic Clinic, Cebu; A. A. Silva, De La Salle Health Sciences Institute, Dasmariñas City; C. M. Romero, Cebu Doctors' University Hospital, Cebu City; M. E. Lim, East Avenue Medical Center, Quezon City; R. A. Danguilan, National Kidney and Transplant Institute, Quezon City

Poland:

M. Nowicki, SPZOZ Uniwersytecki Szpital Kliniczny, Lodz; H. Rudzki, NZOZ Przychodnia Specjalistyczna Andrzej Wittek, Ruda Slaska; K. Landa, LANDA, NZOZ DIABMED - Spolka Lekarzy Diabetologow, Krakow; I. Kucharczyk-Bauman, Centrum Usług Medycznych MaxMed Marek Maciaszek, Poznan; B. Gogola-Migdal, Osrodek Badan

Klinicznych PARAGON, Bochnia; M. Golski, Ostrowieckie Centrum Medyczne S.C., Bielsko-Biala; A. Olech-Cudzik, Ostrowieckie Centrum Medyczne S.C. Anna Olech-Cudzik, Ostrowiec Swietokrzyski; T. Stompor, Wojewodzki Szpital Specjalistyczny w Olsztynie, Olsztyn; T. Szczepanik, Centrum Medyczne Pratia Katowice, Katowice; B. Miklaszewicz, CARDIAMED Beata Miklaszewicz i Dariusz Dabrowski S.J., Legnica; R. Sciborski, Zespól Opieki Zdrowotnej w Olawie SP ZOZ, Olawa; M. Kuzniewski, CENTERMED Sp. z o.o., Krakow; K. Ciechanowski, Samodzielny Publiczny Szpital Kliniczny Nr2 PUM w Szczecinie, Szczecin; D. Wronska, Profamilia Altera, Katowice; W. Klatko, Specjalistyczny Szpital Wojewodzki w Ciechanowie, Ciechanow; S. Mazur, NZOZ Centrum Medyczne MEDYK, Rzeszow; G. Popena, NZOZ DIAB SERWIS S.C. Specjalistyczna Przychodnia Lekarska, Chorzow; M. Myslicki, NZOZ Diaverum w Tczewie, Tczew

Russia:

L. Z. Bolieva, North-Ossetian State Medical Academy, Vladikavkaz; S. Berns, Kemerovo Cardiology Dispansery, Kemerovo; A. Galyavich, Kazan State Medical University, Kazan; T. Abissova, Yaroslavl Regional Clinical Hospital, Yaroslavl; I. Karpova, City Diabetology Centre, St.Petersburg; D. Platonov, Tver Regional Hospital, Tver; N. Koziolova, Perm State Medical Academy, Perm; L. Kvitkova, Regional Clinical Hospital, Kemerovo; R. Nilk, City Hospital #38 n.a. N.A.Semashko, Saint Petersburg; T. Medina, Clinical centre of FMBA city of Perm, Perm; A. Rebrov, Regional Clinical Hospital, Saratov; M. Rossovskaya, Karpovich City Clinical Hospital, Krasnoyarsk; I. Sinitsina, Russian Medical postgraduate academy, Moscow; E. Vishneva, City Clinical Hospital 14, Ekaterinburg; N. Zagidullin, Ufa city clinical hosp. 21, Ufa; T. Novikova, St. Petersburg Pokrovskaya City Hospital, Saint-Petersburg; N. Krasnopeeva, Chelyabinsk Road Hospital of RRW, Chelyabinsk; O. Magnitskaya, Volgograd State Medical University, Volgograd; N. Antropenko, Clinical Hospital 1 named after A. N. Kabanov, Omsk; M. Batiushin, Rostov State Medical University, Rostov-on-Don

Spain:

V. Escudero Quesada, Hospital Universitario Dr. Peset, Valencia; C. Barrios Barrea, Barcelona,H. del Mar,Nefrologia, Barcelona; E. Espinel Garauz, Barcelona,H. Vall d'Hebron,Nefrologia, Barcelona; J. M. Cruzado Garrit, H.Llobregat, L'Hospitalet de Llobregat; C. Morales Portillo, Hospital Universitario Virgen Macarena, Sevilla; J. L. Gorriz Teruel, Hospital Clinico Universitario de Valencia, Valencia; S. Cigarran Guldris, Hospital Publico de Marina, Burela (Lugo); M. Praga Terente, Madrid, H. 12 de Octubre,Nefrologia, Madrid; N. R. Robles Perez-Monteoliva, Badajoz, H. Infanta Cristina, Nefrologia, Badajoz; F. J. Tinahones Madueno, Hospital Clinico Virgen de la Victoria, Malaga; A. Soto Gonzalez, Complejo Hospitalario Univeritario A Coruna, La Coruna; C. Diaz Rodriguez, Hospital Clinico Universitario Santiago de Compostela, Santiago de Compostela

Sweden:

H. Furuland, Akademiska sjukhuset, Uppsala; A. Saeed, Sahlgrenska Universitetssjukhuse, Goteborg; K. Dreja, Malmo Universitets sjukhus, Malmo; J. Spaak, Danderyds sjukhus AB, Stockholm; A. Bruchfeld, KS Huddinge Hospital, Stockholm

Ukraine:

M. Kolesnyk, State Institution Institute of Nephrology of AMS of Ukraine, Kyiv; O. Levchenko, Municipal Institution 'Odesa Regional Clinical Hospital', Odesa; N. Pyvovarova, Vinnytsya Reg Clin Hospital M.I.Pyrogov - Nephrology, Vinnytsia; V. Stus, CI Regional Clinical Hospital n.a I.I. Mechnikov, Dnipro; V. Doretskyy, ME Volyn Reg Clin Hosp, Lutsk; N. Korobova, ME Rivne Reg Clin Hosp, Rivne; O. Horoshko, MI of Kyiv Regional Council of Kyiv Rerional Hospital #2, Kyiv; I. Katerenchuk, ME Polt Reg Clin Hosp M. V. Skliphosovski Polt Reg Count, Poltava; Y. M. Mostovoy, Private enterprise, Vinnytsia; M. Orynychak, ME Cent City Clin Hosp of Ivano-Frankivsk City Coun-Therap, Ivano-Frankivsk; O. Legun, Ivano-Frankivsk Regional Clinical Hospital, Ivano-Frankivsk; I. Dudar, SI institute of Nephrology NAMS of Ukraine, Kyiv; O. Bilchenko, ME Kharkiv City Clinic of Urgent and Emergency Care-Therap, Kharkiv region; S. Andreychyn, ME Ternopil Municipal City Hospital #2, Ternopil; A. Levchenko, ME 'Reg clin special Center of Ragiation Protection', Kharkiv region; L. Zub, Chernivtsi Regional Clinical Hospital - Internal Medicine, Chernivtsi; N. Tereshchenko, MI Cherkasy Reg Hosp of Cherkasy Regional Council-Nephrology, Cherkasy; I. Topchii, Kharkiv Malaya Institute of Therapy-Nephrology, Kharkiv region; T. Ostapenko, CI Zaporizhzhya Reg Clinical Hospital-Nephrology, Zaporizhzhia; S. Bezuglova, Private medical centre 'OkClinic', Kyiv; M. Kopytsya, Kharkiv Malaya Institute of Therapy, Kharkiv region; O. Turenko, ME Dnipro Multifield Clinical Hospital #4 -Nephrological dep, Dnipro

United Kingdom:

P. Mark, Queen Elizabeth University Hospital, Glasgow; J. Barratt, Leicester General Hospital, Leicester; S. Bhandari, Hull and East Yorkshire Hospitals NHS Trust, Hull; D. Fraser, UNIVERSITY HOSPITAL OF WALES, CARDIFF; P. Kalra, Salford Royal NHS Foundation Trust, Salford; S. P. Kon, King's College Hospital, London; K. Mccafferty, Barts Health NHS Trust - St Bartholomew's Hospital, London; A. Mikhail, Morrision Hospital, Swansea; S. P. Kon, Princess Royal University Hospital (GI), Kent

USA:

O. P. Alvarado, Texas Medical Group of Texas, Fort Worth; R. Anderson, VA Medical Center - NE, Omaha; N. S. Andrawis, Manassas Clinical Research Center, Manassas; A. Arif, Apex Medical Research of Flint PC, Flint; S. A. Benjamin, Universal Research Group, Tacoma; G. Bueso, Endocrine Associates, Houston; R. S. Busch, Albany Medical College, Albany; K. W. Carr, Kenneth W. Carr, MD, Blue Coast Cardiology, Vista; P. Crawford, Research by Design, LLC, Chicago; N. Daboul, Advanced Medical Research, Maumee; G.

M. De La Calle, Premier Research Associates, Miami; B. Delgado, San Marcus Research Clinic Inc, Miami Lakes; J. Earl, PMG Research of Hickory, Hickory; M. A. El-Shahawy, Academic Medical Research Institute, Los Angeles; R. J. Graf, MultiCare Research Institute, Tacoma; G. Greenwood, Brookview Hills Research Associates, Winston-Salem; A. Guevara, Alex Guevara DO, Fort Worth; E. M. Wendland, Essentia Health-West Duluth Clinic, Duluth; R. K. Mayfield, Mountain View Clinical Research, Greer; M. Montero, Eastern Nephrology Associates, New Bern; D. J. Morin, Holston Medical Group, Kingsport; P. Narayan, Clinical Research Institute of Northern Virginia, Burke; V. Numrungsroad, Suncoast Clinical Research, New Port Richey; A. C. Reddy, Permian Research Foundation, Odessa; R. Reddy, T R Clinic PA, Fort Worth; M. B. Samson, American Clinical Trials, Hawaiian Gardens; R. Trejo, Helix Biomedics LLC, Boynton Beach; M. B. Butcher, Sterling Research Group, Cincinnati; J. K. Wise, Crescent City Clinical Research Center, Metairie; L. R. Zemel, Creekside Endocrine Associates, Denver; M. Raikhel, Torrance Clinical Research, Lomita; D. Weinstein, Zasa Clinical Research, Boynton Beach; P. Hernandez, Elite Clinical Research, Miami; A. Wynne, Cotton O'Neil Clinical Research Center, Topeka; B. V. Khan, Atlanta Vascular Research Foundation (AVRF), Atlanta; G. A. Sterba, Leon Medical Research, Miami; A. Jamal, North America Research Institute, San Dimas; D. Ross, Kansas Nephrology Research Institute/Research Management Inc, Wichita; S. F. Rovner, Academy of Diabetes, El Paso; A. Tan, West Coast Research, San Ramon; F. Ovalle, University of Alabama, Birmingham; R. J. Patel, Lycoming Internal Medicine Inc, Jersey Shore; J. Talano, SWICFT Institute, Naples; D. R. Patel, Southeastern Clinical Research Institute, Augusta; A. Burgner, Nephrology Clinical Trials Center, Nashville; N. Aslam, Mayo Clinic Cancer Center, Jacksonville; M. Elliott, Metrolina Nephrology Associates, Charlotte; S. Goral, University of Pennsylvania, Philadelphia; A. Jovanovich, University of Colorado, Aurora; J. A. Manley, Mountain Kidney & Hypertension Associates, Asheville; K. Umanath, Henry Ford Hospital, Detroit; D. Waguespack, UT Houston - Texas Medical Center, Houston; D. Weiner, Tufts Medical Center, Boston; M. Yu, Stanford University School of Medicine, Palo Alto; L. Schneider, Tidewater Physicians Multispecialty Group, Newport News; D. Jalal, University of Iowa Hospital & Clinic, Iowa City

Vietnam:

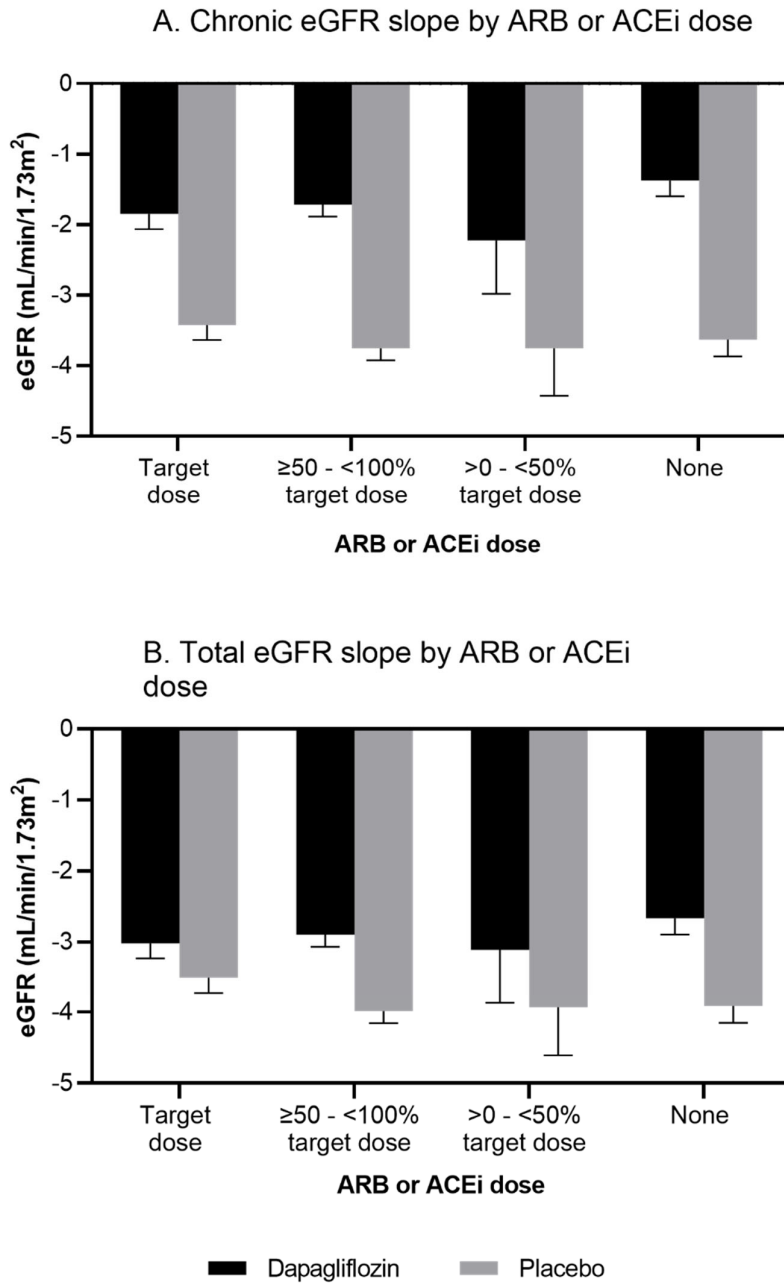
T.Le, T D, Binh Dan Hospital, Ho Chi Minh City; N.Nguyen, T, Thu Duc District hospital, Ho Chi Minh City; H.Nguyen,T T, Dong Nai General Hospital, Bien Hoa; D.Nguyen, B T, Tam Duc hospital, Ho Chi Minh City; V.Nguyen, D K, Bach Mai Hospital, Hanoi; T.Do, G, Bach Mai Hospital, Hanoi; P.Chu, T T, 115 People's Hospital, Ho Chi Minh City; D.Ta, P, 115 Hospital, Ho Chi Minh City; N.Tran, Q, UMC, Ho Chi Minh City; D.Nguyen, A, Director Board, Gia Dinh People Hospital, Ho Chi Minh City; B.Pham, V, Nguyen Tri Phuong Hospital, Ho Chi Minh City

Table S1: Serious adverse events (SAEs) and adverse events (AEs) leading to discontinuation in patients stratified by ACEi/ARB dose

AE, n/N (%)	Dapagliflozin	Placebo
Any AE leading to discontinuation of the study drug		
None	3/64 (4.7)	8/74 (10.8)
<50%	24/547 (4.4)	22/517 (4.3)
50 to <100%	54/934 (5.8)	51/932 (5.5)
100% or more	37/604 (6.1)	42/626 (6.7)
Any SAE*		
None	22/64 (34.4)	29/74 (39.2)
<50%	161/547 (29.4)	161/517 (31.1)
50 to <100%	278/934 (29.8)	325/932 (34.9)
100% or more	172/604 (28.5)	214/626 (34.2)

*Includes death. Categories refer to the percent of maximum labelled antihypertensive dose. ACEi, angiotensin-converting enzyme inhibitor; ARB, angiotensin receptor blockers.

Figure S1: eGFR decline between dapagliflozin 10 mg and placebo based in ARB or ACEi dose (A) Chronic slope, (B) Total slope



Chronic eGFR slope was determined from Week 2 to the end of the study; Total eGFR slope was determined over the entire study period

ACEi, angiotensin-converting enzyme inhibitor; ARB, angiotensin receptor blocker; eGFR, estimated glomerular filtration rate.