

University of Massachusetts Medical School

eScholarship@UMMS

Open Access Articles

Open Access Publications by UMMS Authors

2014-07-17

Preliminary evaluation of near infrared spectroscopy as a method to detect plasma leakage in children with dengue hemorrhagic fever

Babs R. Soller

University of Massachusetts Medical School

Et al.

Let us know how access to this document benefits you.

Follow this and additional works at: <https://escholarship.umassmed.edu/oapubs>



Part of the [Immunology and Infectious Disease Commons](#), [Infectious Disease Commons](#), [Virology Commons](#), and the [Virus Diseases Commons](#)

Repository Citation

Soller BR, Srikiatkhachorn A, Zou F, Rothman AL, Yoon I, Gibbons RV, Kalayanarooj S, Thomas SJ, Green S. (2014). Preliminary evaluation of near infrared spectroscopy as a method to detect plasma leakage in children with dengue hemorrhagic fever. Open Access Articles. <https://doi.org/10.1186/1471-2334-14-396>. Retrieved from <https://escholarship.umassmed.edu/oapubs/2442>

Creative Commons License



This work is licensed under a [Creative Commons Attribution 4.0 License](#).

This material is brought to you by eScholarship@UMMS. It has been accepted for inclusion in Open Access Articles by an authorized administrator of eScholarship@UMMS. For more information, please contact Lisa.Palmer@umassmed.edu.

TECHNICAL ADVANCE

Open Access

Preliminary evaluation of near infrared spectroscopy as a method to detect plasma leakage in children with dengue hemorrhagic fever

Babs Soller^{1,2*}, Anon Srikiatkachorn^{3,4}, Fengmei Zou¹, Alan L Rothman⁵, In-Kyu Yoon⁴, Robert V Gibbons⁴, Siripen Kalayanaroj⁶, Stephen J Thomas⁷ and Sharone Green³

Abstract

Background: Dengue viral infections are prevalent in the tropical and sub-tropical regions of the world, resulting in substantial morbidity and mortality. Clinical manifestations range from a self-limited fever to a potential life-threatening plasma leakage syndrome (dengue hemorrhagic fever). The objective of this study was to assess the utility of near infrared spectroscopy (NIRS) measurements of muscle oxygen saturation (SmO_2) as a possible continuous measure to detect plasma leakage in children with dengue.

Methods: Children ages 6 months to 15 years of age admitted with suspected dengue were enrolled from the dengue ward at Queen Sirikit National Institute for Child Health. Children were monitored daily until discharge. NIRS data were collected continuously using a prototype CareGuide Oximeter 1100 with sensors placed on the deltoid or thigh. Daily ultrasound of the chest and a right lateral decubitus chest x-ray the day after defervescence were performed to detect and quantitate plasma leakage in the pleural cavity.

Results: NIRS data were obtained from 19 children with laboratory-confirmed dengue. Average minimum SmO_2 decreased for all subjects prior to defervescence. Average minimum SmO_2 subsequently increased in children with no ultrasound evidence of pleural effusion but remained low in children with pleural effusion following defervescence. Average minimum SmO_2 was inversely correlated with pleural space fluid volume. ROC analysis revealed a cut-off value for SmO_2 which yielded high specificity and sensitivity.

Conclusions: SmO_2 measured using NIRS may be a useful guide for real-time and non-invasive identification of plasma leakage in children with dengue. Further investigation of the utility of NIRS measurements for prediction and management of severe dengue syndromes is warranted.

Background

There are approximately 390 million dengue virus (DENV) infections worldwide, resulting in 500,000 hospitalizations and 20,000 deaths annually [1]. The mosquito-borne DENV, of which there are four serotypes, causes substantial morbidity and mortality in tropical and sub-tropical regions of the world [2]. The clinical

manifestations of DENV infection range from a self-limited febrile illness comprising fever, rash, headache and myalgias known as dengue fever (DF) to a potentially life-threatening plasma leakage syndrome, dengue hemorrhagic fever (DHF). In the evaluation of DHF patients, plasma leakage may manifest as pleural effusion, ascites, or hemoconcentration [2]. Pleural effusions are a common sign of plasma leakage in patients with DHF and have been positively correlated with disease severity [2-4]. If detected early, the effects of plasma leakage are manageable with judicious use of intravenous fluids; case-fatality rates at experienced medical facilities ranges between 0.5% - 1%.

* Correspondence: babs.soller@reflectancemedical.com

¹Reflectance Medical, Inc., 116 Flanders Rd, Suite 1000, Westborough, MA 01581, USA

²Department of Anesthesiology, University of Massachusetts Medical School, 55 Lake Avenue, North, Worcester, MA 01655, USA

Full list of author information is available at the end of the article

However, progression to DHF often relies on serial history and physical examinations and clinical laboratory evaluations to detect hemoconcentration (rising hematocrit) and thrombocytopenia. Chest x-ray and ultrasound have also been shown to be effective in identification of pleural effusions and/or ascites in DHF patients [3]. While non-invasive, these measurements are not practical for prediction of plasma leakage in resource poor settings. Due to the relatively rapid nature of the onset of shock, these crude measures may not be done at the appropriate time to support preventive fluid administration.

Near infrared spectroscopy (NIRS) is a non-invasive technique which can be used to continuously assess tissue oxygenation in cerebral as well as in muscle tissue. It has been widely used on children [5] and has been shown to have important uses in trauma and critical care settings [6]. Muscle oxygen saturation (SmO_2) is distinct from tissue oxygen saturation (StO_2) in that the determination of oxygenated and deoxygenated hemoglobin is performed on spectra which have been corrected for spectral interferences from skin pigment and fat [7]. SmO_2 has been shown to be sensitive for the early detection of hypovolemia by tracking increased oxygen extraction resulting from peripheral vasoconstriction to shunt blood to the heart and brain [8-10]. Since decreased peripheral perfusion is a clinical observation in patients with DHF [2], we hypothesized that NIRS-determined SmO_2 would be effective in identifying DHF patients with significant plasma leakage. An easy, non-invasive method which would permit early (i.e. prior to more traditional clinical tools) identification of plasma leakage would be an invaluable tool for early identification of progression to DHF and support fluid management to prevent shock in children with severe dengue.

Methods

Study enrollment

Children aged ≥ 6 months and ≤ 18 years of age with suspected dengue virus infection, temperature $\geq 38.5^\circ\text{C}$ within 24 hours of enrollment and no chronic underlying medical condition were enrolled from the in-patient dengue ward at the Queen Sirikit National Institute of Child Health. Subjects were monitored daily until discharge. Fluid administration and other clinical management were guided by the treating physician according to WHO guidelines [2]. Disease severity was assigned according to the 1997 WHO guidelines. Dengue fever (DF) was defined as confirmed dengue virus infection in the absence of evidence of plasma leakage. Dengue hemorrhagic fever (DHF) was defined as plasma leakage (hemoconcentration $\geq 20\%$ over baseline, pleural effusion, or ascites) in the presence of thrombocytopenia (platelet count $\leq 100,000 \text{ mm}^3$). Temperature was measured at least every 6 hours. The day of defervescence, designated

fever day 0, was the day in which the temperature fell and remained below 38°C with one and two days prior designated as fever days -1 and -2 etc. and after defervescence fever days $+1$, $+2$, etc. Blood was collected daily for hematocrit determination. Fever time zero was recorded as the first temperature recording below 38°C on fever day 0. Dengue virus infection was confirmed by RT-PCR and/or dengue serology as previously described [11,12]. This study was approved by the Institutional Review Boards of the Queen Sirikit National Institute for Child Health, the Thai Ministry of Public Health, and the US Army Surgeon General. Written informed consent was obtained from the parent or guardian. Assent forms were obtained from subjects who were at least seven years old.

NIRS data collection

NIRS data were collected with a prototype version of the CareGuide Oximeter 1100 (Reflectance Medical Inc., Westborough, MA, USA). The CareGuide Oximeter uses two different source-detector separation distances to correct the spectra for interference from skin and fat. Incident light is produced by a broad band NIR LED light source which illuminates the tissue over the range of 700 nm – 900 nm. The sensor has a chip-scale spectrophotometer parallel to a row of light sources spaced at different distances (6 mm to 45 mm) from the spectrometer. One light source, placed 6 mm from the spectrometer, collects light reflected from near the tissue surface, capturing the spectrum associated with the skin pigment. A series of six light sources spaced 5 mm apart and 20 mm-45 mm from the spectrometer are used to illuminate the muscle. The sensor automatically selects the light source which is at an appropriate distance to capture light reflected back from the muscle. Thicker fat layers require longer separations to increase the depth of penetration into the tissue. The muscle spectra are corrected by mathematically removing the spectral information from the skin pigment and SmO_2 is calculated from the isolated muscle spectrum [13]. Additional details on the device, its validation against venous blood, and performance on healthy adults have been previously published [14].

The NIRS sensor was adhered to the deltoid or the thigh with a NIR-transparent double sided adhesive tape (Figure 1). The sensor is attached by a cable to a 10" touch screen computer that is mounted at the bedside. The location of the sensor was at the discretion of the study nurse. The sensor was applied as soon as possible after the child was admitted to the dengue ward. Data was collected every 5 minutes and a minimum average SmO_2 was calculated for each 30 minute interval using fever time zero as the central reference point. Monitoring was stopped each day to bathe the patient and the sensor was then reapplied. If the sensor came off at night, it was not reapplied until the next morning. Data collection ceased when the child was discharged.

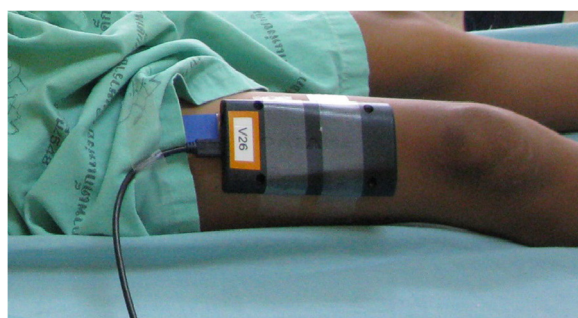


Figure 1 Photograph of prototype CareGuide sensor applied to child's thigh.

Ultrasound and radiographic data collection

Ultrasonography of the chest and abdomen was performed by a radiologist daily to assess for pleural effusions. Three sites on the chest were assessed as previously described [3]. Briefly, ultrasound examinations were performed daily with a portable ultrasound scanner (GE Logiq Book) using a 2.5 MHz convex transducer. Standard protocols were used to examine 3 chest sites for fluid accumulation using mid-axillary-longitudinal, a mid-clavicular-longitudinal, and right upper quadrant-transverse views. The presence or absence of fluid in these images was noted by a radiologist who was blinded to the clinical data. If any of the 3 views was positive for fluid, the patient was considered to have pleural effusions on that day.

One day after defervescence (fever day +1), a right lateral decubitus chest x-ray was obtained. A pleural effusion index (PEI) was calculated from the maximal height of pleural fluid/width of hemithorax $\times 100$ [3].

Data analysis

The minimum average 30-minute SmO_2 was determined for each study day and a receiver operator characteristic curve (ROC) was constructed to determine the sensitivity and specificity of SmO_2 to detect pleural effusions observed with the daily ultrasound measurements. The x-ray determined PEI was compared to the minimum SmO_2 for the same day using linear regression.

Results

Study population

NIR spectra were successfully collected for 19 (13 M/6 F) patients intermittently over the enrollment period (range: 2 to 5 days). Patient characteristics at study enrollment are shown in Table 1. The average patient age was 10.2 ± 2.6 years. Three of 19 subjects (16%) progressed to shock. Twelve subjects had the sensor placed on the arm and 7 subjects had data collected on the thigh. There was no association between gender and sensor location, however the thigh placement was used on the younger subjects, who generally had arms too

Table 1 Baseline characteristics of subjects at study entry

Clinical diagnosis at discharge	DF	DHF
Number of subjects	8	11
Age (mean \pm SE)	10.5 ± 0.3	10.0 ± 0.2
Sex (male/female)	6/2	7/4
Hematocrit (%) (mean \pm SE)	39.8 ± 0.3	42.3 ± 0.6
AST (mean \pm SE)	70 ± 11	102 ± 16
Presence/Absence of pleural effusion (by ultrasound)	0/8	2/7*
Days ill prior to enrollment (mean \pm SE)	4.5 ± 0.1	4.3 ± 0.1
Fever day (mean \pm SE)	-0.25 ± 0.1	-0.73 ± 0.1

* Data not available for 2 subjects.

small to accept the sensor. Representative 30 minute average SmO_2 for two subjects, one without and one with evidence of pleural effusion, collected during the 'critical period' from fever day - 1 through fever day +1 are shown in Figure 2.

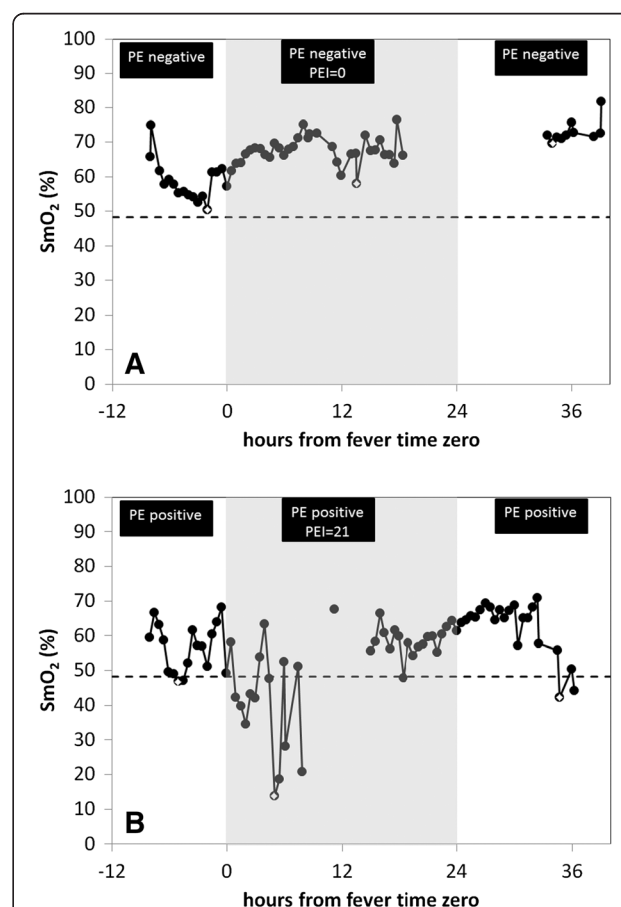


Figure 2 Representative plots of minimum average 30 minute SmO_2 for (A) a subject with no pleural effusion detected and (B) a subject with pleural effusion detected by ultrasound and chest x-ray. Fever time zero denotes the time of defervescence (temperature $\leq 38^\circ\text{C}$). PE = pleural effusion as measured by ultrasound; PEI = pleural effusion index as measured on right lateral decubitus chest x-ray.

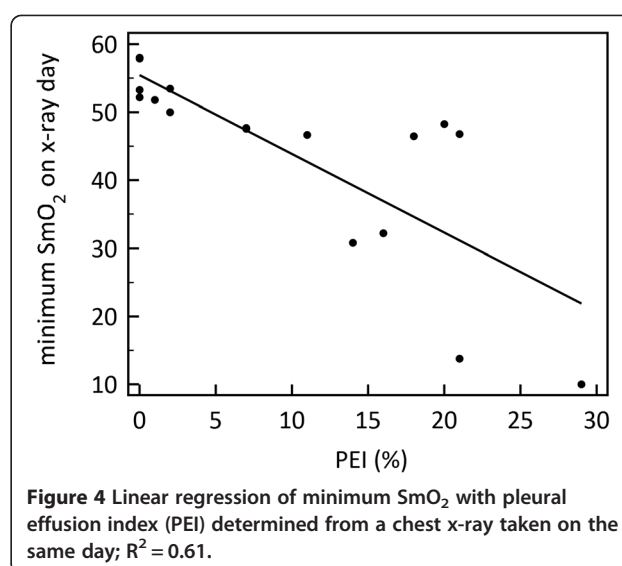
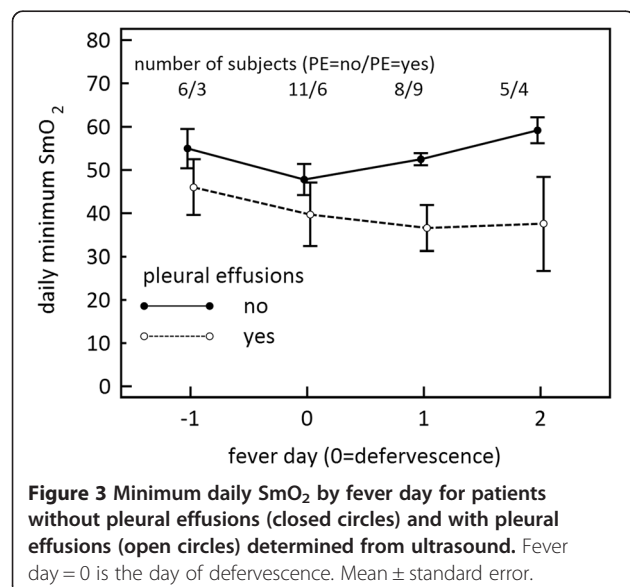
Association of SmO₂ with pleural effusion

Maximal plasma leakage and shock in dengue typically occurs within 24 hours of defervescence. To compare all subjects at similar times during their disease progression, SmO₂ was plotted by fever day rather than study day, where fever day = 0 represents the day of defervescence (Figure 3). Between fever day -1 and fever day 0, average minimum SmO₂ decreased for all patients; however on fever day +1, on average, SmO₂ increased for patients without ultrasound evidence of pleural effusion, and conversely decreased for those patients with evidence of pleural effusion. Figure 4 shows the relationship between minimum SmO₂ on fever day +1 and the PEI determined from chest x-ray on that day. We found an inverse linear relationship between the two parameters ($R^2 = 0.61$) with low values of SmO₂ corresponding to a high pleural effusion index.

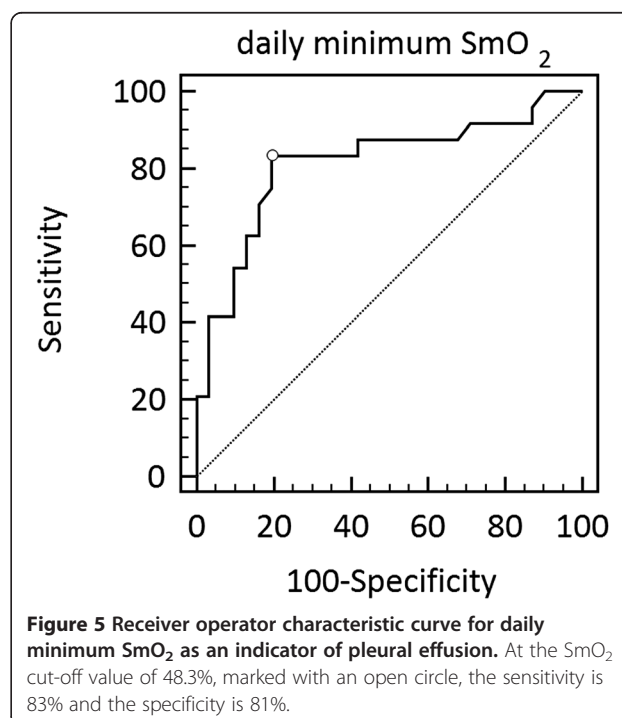
Figure 5 shows the ROC curve for minimum SmO₂ as an indication of pleural effusion detected with ultrasound on each study day (55 data points). At the SmO₂ cut-off value of 48.3% the sensitivity is 83% and the specificity is 81%. The area under the ROC curve is 0.81 (95% CI: 0.69 – 0.91).

Discussion

To our knowledge, this is the first study to use NIRS to evaluate dengue patients for markers of plasma leakage that may result in shock. Our data show that SmO₂ values less than 48% have a high sensitivity and specificity for being associated with pleural effusions in the study patients. A tool which permits real time detection of plasma leakage via SmO₂ monitoring may help to determine which individuals will require earlier fluid intervention, thereby reducing the number of dengue patients who proceed to shock.



Earlier studies using strain gauge plethysmography demonstrated that pleural effusion in dengue patients was accompanied by microvascular fluid leakage into the extravascular space [15]. Recent studies confirm that pleural effusions were the most common sign of plasma leakage in DHF patients [3,4]. Plasma leakage may result in reduced intravascular volume, a higher risk for shock and thereby reduced SmO₂. It has been previously demonstrated that SmO₂ is a very early indicator of central hypovolemia using a human laboratory model of pre-shock hemorrhage: lower body negative pressure



(LBNP). Significant decreases in SmO_2 occurred well before decreases in blood pressure and arterial oxygen saturation by pulse oximetry (SpO_2) and increases in heart rate [8,9]. In the LBNP model, decreases in SmO_2 were highly correlated with increases in total peripheral resistance, indicating that this observed increase in oxygen extraction results from vasoconstriction that is shunting blood away from the skeletal muscle toward the heart in an effort to maintain normal blood pressure [8,10]. In a similar fashion, the decreases in SmO_2 observed in these DHF patients likely result from intravascular volume depletion and subsequent compensatory vasoconstriction.

In a study by Libraty et al., the ratio of extracellular to intracellular water (ECW/ICW) was determined by bioelectrical impedance spectroscopy for patients with DF, DHF and other febrile illnesses [16]. Around the time of defervescence, the ECW/ICW ratio increased in proportion to disease severity. The authors suggested that the positive fluid balance that accompanied the increase in extracellular water was due to a reduction in renal water clearance [16]. An increase in extravascular water could reduce tissue blood flow and increase oxygen extraction, thereby lowering SmO_2 . During the time surrounding defervescence and fluid administration, it is not known if the decrease in SmO_2 is a result of hypovolemia or excess interstitial water reducing blood flow. Gaining a better understanding of this may help in developing tools to guide fluid resuscitation for dengue patients in a manner which will avoid fluid overload.

One limitation of this study may be the use of daily minimum SmO_2 for statistical analysis. Patients without pleural effusion had fewer NIRS readings per day than patients with pleural effusion, likely because these patients were less sick and therefore more ambulatory.

This pilot study investigated the noninvasive monitoring of SmO_2 in patients with dengue infection. Low levels of SmO_2 were shown to be associated with pleural effusions detected with ultrasound and chest x-ray. This technology provides continuous SmO_2 readout to track of the progression and treatment of patients with diseases which cause plasma leakage and heightened risk of shock. This initial study determined a SmO_2 cutoff of 48%, but this value would need to be confirmed in additional dengue cohorts of both adults and children. Once validated, at risk patients could be routinely monitored because the display provides immediate feedback to the clinician. The SmO_2 monitor is significantly lower in cost than ultrasound equipment, but it is recognized that to be widely adopted in countries with limited resources the cost to use it must be modest.

Conclusions

A pilot study of Thai children hospitalized with acute dengue virus infection demonstrated that minimal daily

SmO_2 as measured by NIRS was found to correlate with pleural effusions in hospitalized children with acute dengue virus infection. ROC analysis revealed a cut-off value for SmO_2 (48%) which yielded high specificity and sensitivity. Further studies to further define and validate the utility of NIRS monitoring to detect plasma leakage in dengue are warranted.

Competing interests

BS and FZ are employees of Reflectance Medical Inc. and hold stock or stock options in the company. BS is an officer of Reflectance Medical. The remaining authors have no conflicts to declare.

Authors' contributions

Conceived and designed the experiments: ALR BS IY SGT SG. Performed the experiments: RVG AS SGT SK. Analyzed the data: BS FZ ALR AS SGT SG. Enrolled patients: AS SK. Wrote the paper: BS AS ALR IY RVG SK SGT SG. All authors read and approved the final manuscript.

Acknowledgements

The authors thank the staff of the Department of Virology, Armed Forces Research Institute of Medical Sciences for sample collection, diagnostic testing, and research support; Dr. Suchitra Nimmannitya for reviewing the clinical diagnoses; doctors and nurses of the Queen Sirikit National Institute of Child Health for patient care; and the subjects and families who participated in this study. This work was supported by National Institutes of Health Grant NIH-P01AI34533 (AS ALR SG SK), the Military Infectious Disease Research Program (RVG IY SGT SK) and the Telemedicine & Advanced Technology Research Center (BS FZ).

The views expressed in this article are those of the authors and do not represent the official policy or position of the U.S. Department of the Army, Department of Defense, or U.S. Government.

Author details

¹Reflectance Medical, Inc., 116 Flanders Rd, Suite 1000, Westborough, MA 01581, USA. ²Department of Anesthesiology, University of Massachusetts Medical School, 55 Lake Avenue, North, Worcester, MA 01655, USA. ³Division of Infectious Diseases and Immunology, University of Massachusetts Medical School, 55 Lake Avenue, North, Worcester, MA 01655, USA. ⁴Department of Virology, Armed Forces Research Institute of Medical Sciences, 315/6 Rajvithi Road, Bangkok 10400, Thailand. ⁵Institute for Immunology and Informatics, University of Rhode Island, 80 Washington Street, Providence, RI 02903, USA. ⁶Queen Sirikit National Institute of Child Health, 520/8 Rajvithi Road, Bangkok 10400, Thailand. ⁷Viral Diseases Branch, Walter Reed Army Institute of Research, 503 Robert Grant Avenue, Silver Spring, MD 20910, USA.

Received: 4 April 2014 Accepted: 30 June 2014

Published: 17 July 2014

References

- Bhatt S, Gething PW, Brady OJ, Messina JP, Farlow AW, Moyes CL, Drake JM, Brownstein JS, Hoen AB, Sankoh O, Myers MF, George DB, Jaenisch T, Wint GR, Simmons CP, Scott TW, Farrar JJ, Hay SI: **The global distribution and burden of dengue.** *Nature* 2013, **496**:504–507.
- Comprehensive Guidelines for Prevention and Control of Dengue and Dengue Haemorrhagic Fever.** In World Health Organization; 2011. ISBN 978-92-9022-387-0.
- Srikiatkachorn AM, Krautrachue AM, Ratanaprakarn WM, Wongtapradit LM, Nithipanya NM, Kalayanaroj SM, Nisalak AM, Thomas SJM, Gibbons RVM, Mammen MPJ, Libraty DHM, Ennis FAM, Rothman ALM, Green SM: **Natural history of plasma leakage in dengue hemorrhagic fever: a serial ultrasonographic study.** *Pediatr Infect Dis J* 2007, **26**:283–290.
- Srikiatkachorn A, Gibbons RV, Green S, Libraty DH, Thomas SJ, Endy TP, Vaughn DW, Nisalak A, Ennis FA, Rothman AL, Nimmannitya S, Kalayanaroj S: **Dengue hemorrhagic fever: the sensitivity and specificity of the World Health Organization definition for the identification of severe cases of dengue in Thailand, 1994–2005.** *Clin Infect Dis* 2010, **50**:1135–1143.
- Chakravarti S, Srivastava S, Mittnacht AJ: **Near infrared spectroscopy (NIRS) in children.** *Sem Cardiothorac Vasc Anesth* 2008, **12**:70–79.

6. Ward KR, Ivatury RR, Barbee RW, Turner J, Pittman R, Torres Fiho IP, Spiess BD: **Near infrared spectroscopy for evaluation of the trauma patient: a technology review.** *Resuscitation* 2006, **68**:27–44.
7. Yang Y, Landry MR, Soyemi OO, Shear MA, Soller BR: **Simultaneous correction of skin color and fat thickness for tissue spectroscopy using a two-distance fiber optic probe and orthogonalization technique.** *Opt Lett* 2005, **30**:2269–2271.
8. Soller BR, Yang Y, Soyemi OO, Ryan KL, Rickards CA, Walz JM, Heard SO, Convertino VA: **Noninvasively determined muscle oxygen saturation is an early indicator of central hypovolemia in humans.** *J Appl Physiol* 2008, **104**:475–481.
9. Ward KR, Tiba MH, Ryan KL, Torres I, Rickards CA, Witten T, Soller BR, Convertino VA: **Oxygen transport characterization of a human model of progressive hemorrhage.** *Resuscitation* 2010, **81**:987–993.
10. Soller BR, Zou F, Ryan KL, Rickards CA, Ward KR, Convertino VA: **Lightweight noninvasive trauma monitor for early indication of central hypovolemia and tissue acidosis: a review.** *J Trauma Acute Care Surg* 2012, **73**:S106–S111.
11. Lanciotti RS, Calisher CH, Gubler DJ, Chang GJ, Vorndam AV: **Rapid detection and typing of dengue viruses from clinical samples by using reverse transcriptase-polymerase chain reaction.** *J Clin Microbiol* 1992, **30**:545–551.
12. Innis BL, Nisalak A, Nimmannitya S, Kusalerdchariya S, Chongsawasdi V, Suntayakorn S, Puttisri P, Hoke CH: **An enzyme-linked immunosorbent assay to characterize dengue infections where dengue and Japanese encephalitis co-circulate.** *Am J Trop Med Hyg* 1989, **40**:418–427.
13. Zou F, Jin C, Ross RR, Soller BR, Jin C, Ross RR, Soller BR: **Investigation of spectral interferences on the accuracy of broadband CW-NIRS tissue SO₂ determination.** *Biomed Opt Exp* 2010, **1**:748–761.
14. Ellerby G, Smith CP, Zou F, Scott P, Soller BR: **Validation of a spectroscopic sensor for the continuous, noninvasive measurement of muscle oxygen saturation and pH.** *Physiol Meas* 2013, **34**:859–871.
15. Bethell DB, Gamble J, Pham PL, Nguyen MD, Tran TH, Ha TH, Tran TN, Dong TH, Gartside IB, White NJ, Day NP: **Noninvasive measurement of microvascular leakage in patients with dengue hemorrhagic fever.** *Clin Infect Dis* 2001, **32**:243–253.
16. Libraty DH, Endy TP, Kalayanaroj S, Chansiriwongs W, Nisalak A, Green S, Ennis FA, Rothman AL: **Assessment of body fluid compartment volumes by multifrequency bioelectrical impedance spectroscopy in children with dengue.** *Trans R Soc Trop Med Hyg* 2002, **96**:295–299.

doi:10.1186/1471-2334-14-396

Cite this article as: Soller et al.: Preliminary evaluation of near infrared spectroscopy as a method to detect plasma leakage in children with dengue hemorrhagic fever. *BMC Infectious Diseases* 2014 **14**:396.

Submit your next manuscript to BioMed Central and take full advantage of:

- Convenient online submission
- Thorough peer review
- No space constraints or color figure charges
- Immediate publication on acceptance
- Inclusion in PubMed, CAS, Scopus and Google Scholar
- Research which is freely available for redistribution

Submit your manuscript at
www.biomedcentral.com/submit

