

University of Massachusetts Medical School

eScholarship@UMMS

Implementation Science and Practice Advances
Research Center Publications

Psychiatry

2010

The Learning and Working During the Transition to Adulthood Rehabilitation Research and Training Center

Maryann Davis

University of Massachusetts Medical School

Et al.

Let us know how access to this document benefits you.

Follow this and additional works at: https://escholarship.umassmed.edu/psych_cmhsr



Part of the [Health Services Research Commons](#), [Psychiatric and Mental Health Commons](#), [Psychiatry Commons](#), and the [Psychiatry and Psychology Commons](#)

Repository Citation

Davis M, Delman J, Ellison ML, Lidz CW. (2010). The Learning and Working During the Transition to Adulthood Rehabilitation Research and Training Center. Implementation Science and Practice Advances Research Center Publications. Retrieved from https://escholarship.umassmed.edu/psych_cmhsr/635

This material is brought to you by eScholarship@UMMS. It has been accepted for inclusion in Implementation Science and Practice Advances Research Center Publications by an authorized administrator of eScholarship@UMMS. For more information, please contact Lisa.Palmer@umassmed.edu.

MISSION

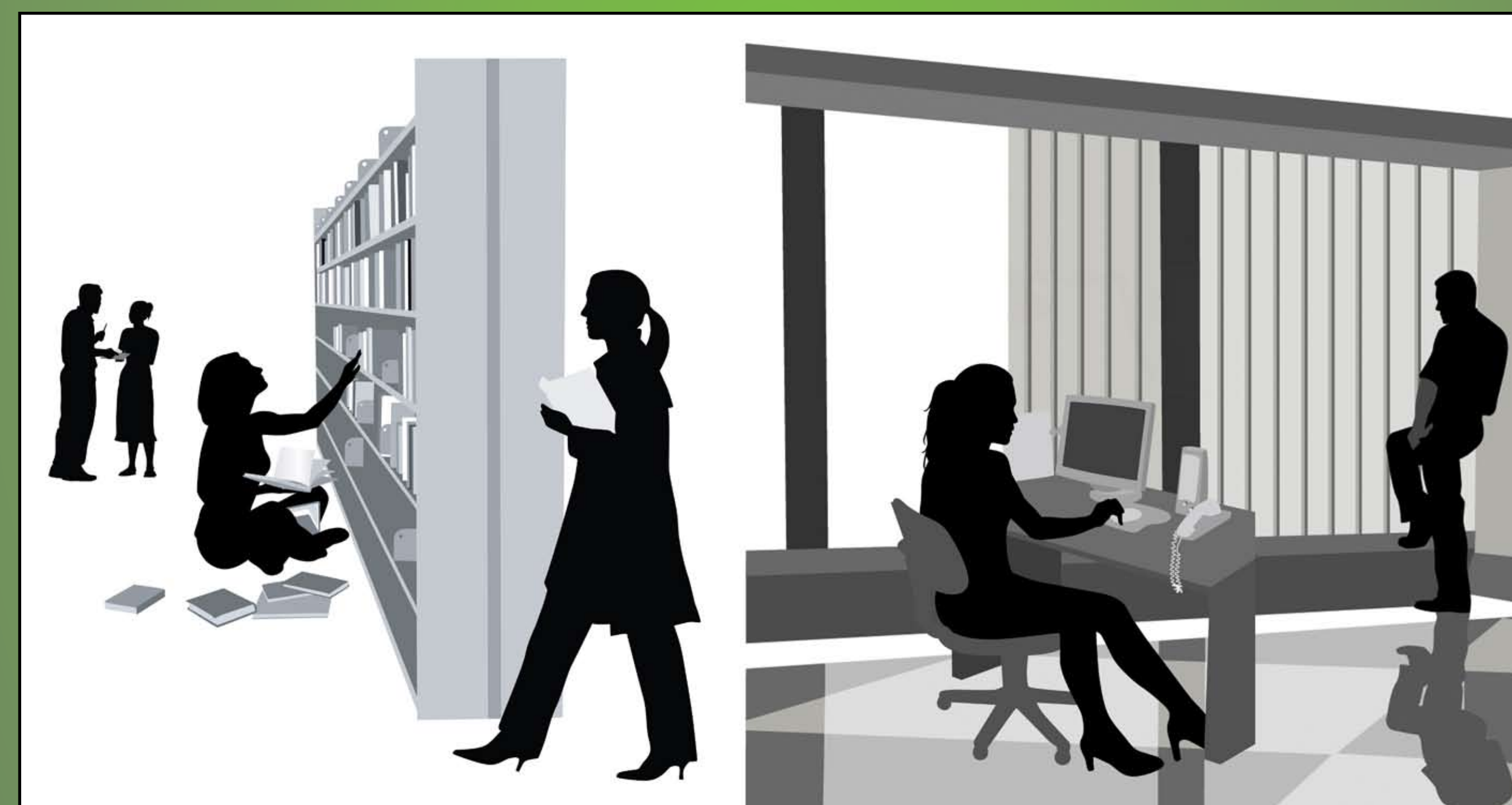
Research and dissemination activities are singularly focused on developing knowledge for and about developmentally appropriate services that help Transition Age Youth and Young Adults (TAYYA) with Serious Mental Health Conditions (SMHC) successfully complete their schooling and training and launch their adult working careers.

TRANSITIONS RTC

The Learning and Working During the Transition to Adulthood Rehabilitation Research and Training Center (Transitions RTC) conducts research, training, dissemination and technical assistance activities. The aim of these activities is to improve supports for the successful completion of schooling and training and movement into rewarding work lives in young people, ages 14-30, with serious mental health conditions. The RTC conducts cutting-edge rigorous research that tests or informs interventions that support education, training and working during the transition to adulthood. The RTC's research and dissemination activities are conducted in partnership with youth and young adults with mental health conditions, and input from family members. The translation of this knowledge speeds capacity building for service providers and the movement of findings into practice and policy. The RTC is funded by a 5-year grant from the National Institute on Disability and Rehabilitation Research.

PRINCIPLES

- ☒ Support the movement from student to worker
- ☒ Examine psychosocial maturation and its implications for interventions
- ☒ Conduct participatory action research and dissemination



PARTICIPATORY ACTION RESEARCH

Jonathan Delman, M.P.H., J.D., Associate Director

Research, training, and dissemination activities are guided by consumer transition age youth and young adults (TAYYA) Project Associates (PA's) working at the RTC. Project Associates will gather the voice of youth across the nation and:

- receive thorough research training and orientation
- advise the RTC research and training staff
- conduct research interviews
- assist in developing and/or conducting trainings
- communicate research findings to young adult consumers

Learning - Working - Learning - Working

