

May 8th, 10:30 AM - 12:00 PM

Collaborative Research Opportunities with Tufts Cummings School of Veterinary Medicine

M. Sawkat Anwer
Tufts Cummings School of Veterinary Medicine

Let us know how access to this document benefits you.

Follow this and additional works at: https://escholarship.umassmed.edu/cts_retreat



Part of the [Translational Medical Research Commons](#), and the [Veterinary Medicine Commons](#)

Anwer MS. (2013). Collaborative Research Opportunities with Tufts Cummings School of Veterinary Medicine. UMass Center for Clinical and Translational Science Research Retreat. Retrieved from https://escholarship.umassmed.edu/cts_retreat/2013/presentations/18

Creative Commons License



This work is licensed under a [Creative Commons Attribution-NonCommercial-Share Alike 3.0 License](#). This material is brought to you by eScholarship@UMMS. It has been accepted for inclusion in UMass Center for Clinical and Translational Science Research Retreat by an authorized administrator of eScholarship@UMMS. For more information, please contact Lisa.Palmer@umassmed.edu.



Collaborative Research Opportunities with Tufts Cummings School of Veterinary Medicine



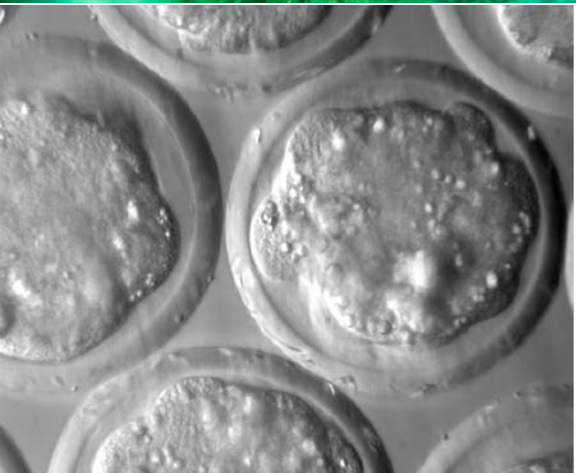
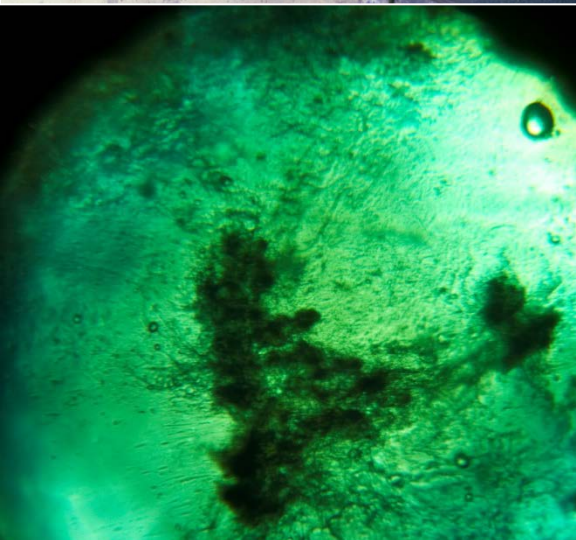
*UMass CCTS Mini Symposium
May 8, 2013*



M. Sawkat Anwer
Associate Dean for Research

Tufts
UNIVERSITY

Cummings School of
Veterinary Medicine



Mission

We seek to improve the health and well-being of animals, people and the environment in which they live, through excellence and innovation in education, clinical service and research.

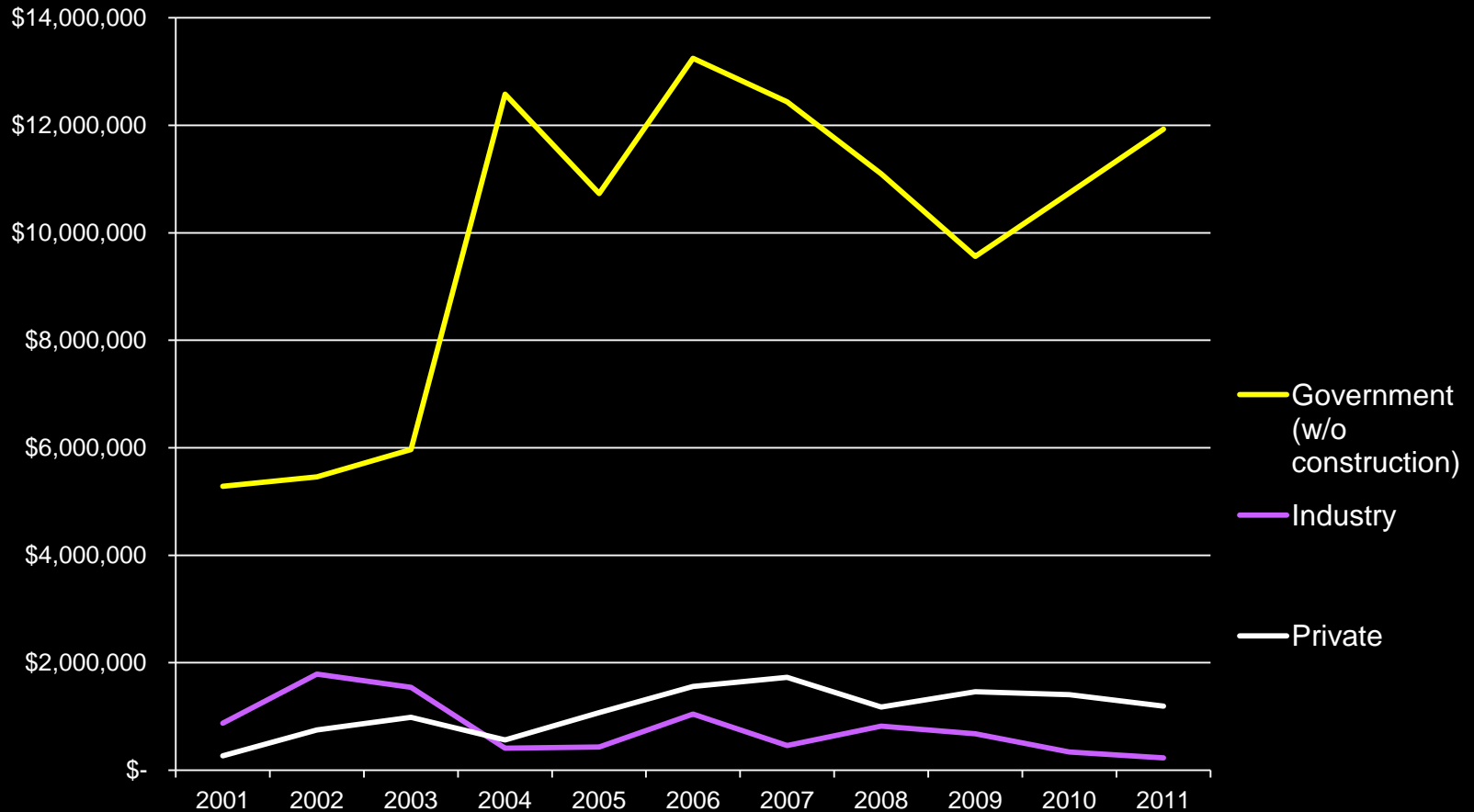
About the school

- 360 Students, 120 Faculty (40 FTE Research), 400 Staff
- Academic departments
 - Clinical Sciences
 - Biomedical Sciences
 - Infectious Disease and Global Health
 - Environmental and Population Health

Research Resources

- Research Space:
 - *35,000 Sq. Ft.*
- NE Regional Biosafety Laboratory:
 - *BSL3 and ABSL3 (TB, Tuleremia, Anthrax)*
 - *Aerobiology*
- Lab Animal Medicine:
 - *Rodents, Small (dogs and cats) and large (Horses, sheep, goats, pigs, alpaca) animals*
- Five Teaching hospitals:
 - *Spontaneous disease models*
 - *Clinical trials*

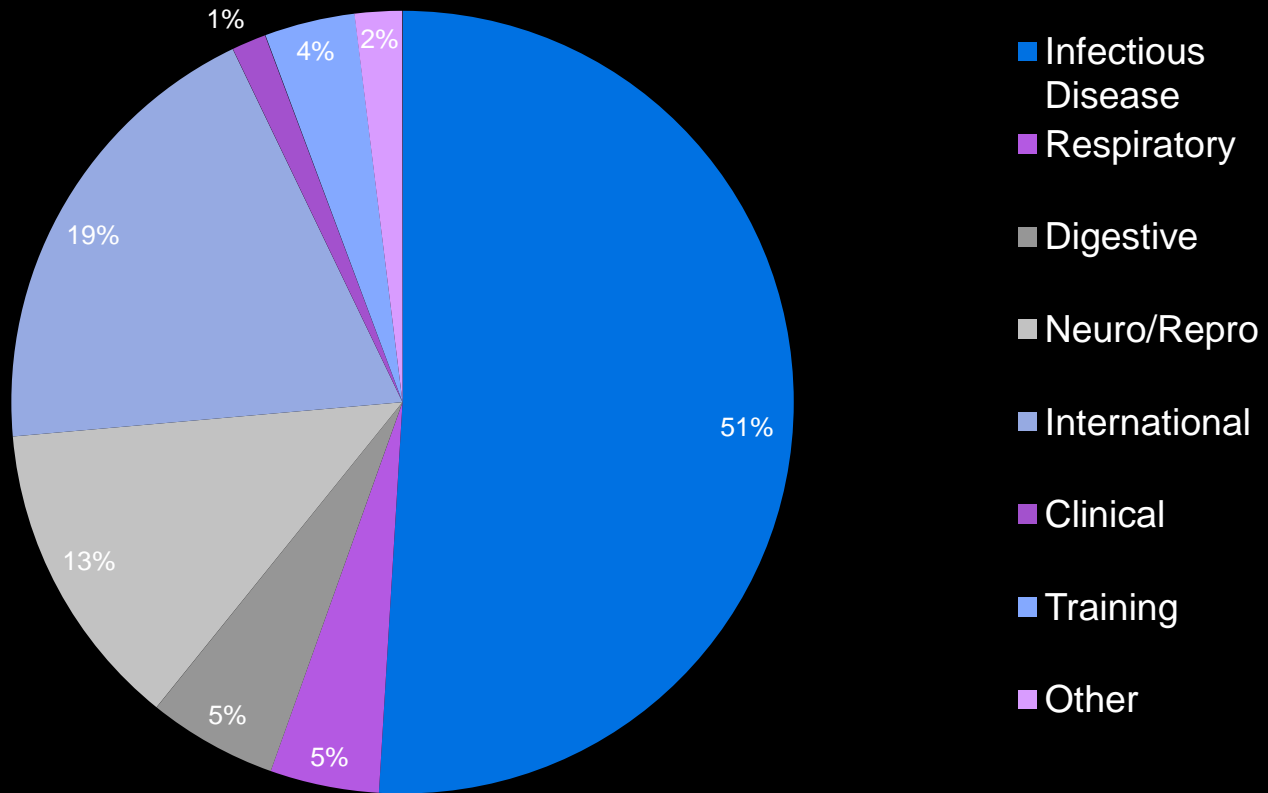
Research Funding Trends 2001 - 2011



Major Research Programs

- Infectious diseases:
 - *Pathogenesis and therapy*
- Neuroscience and Reproductive Biology:
 - *Maternal Behavior, Transgenerational effects of drug addiction*
- Digestive Diseases:
 - *Pathophysiology of cholestasis*
- Comparative Pulmonology:
 - *Stem cells for respiratory diseases, Pulmonary function testing*
- International Medicine:
 - *Veterinary Education, Epidemiology, Disease prevalence*
- Clinical Research

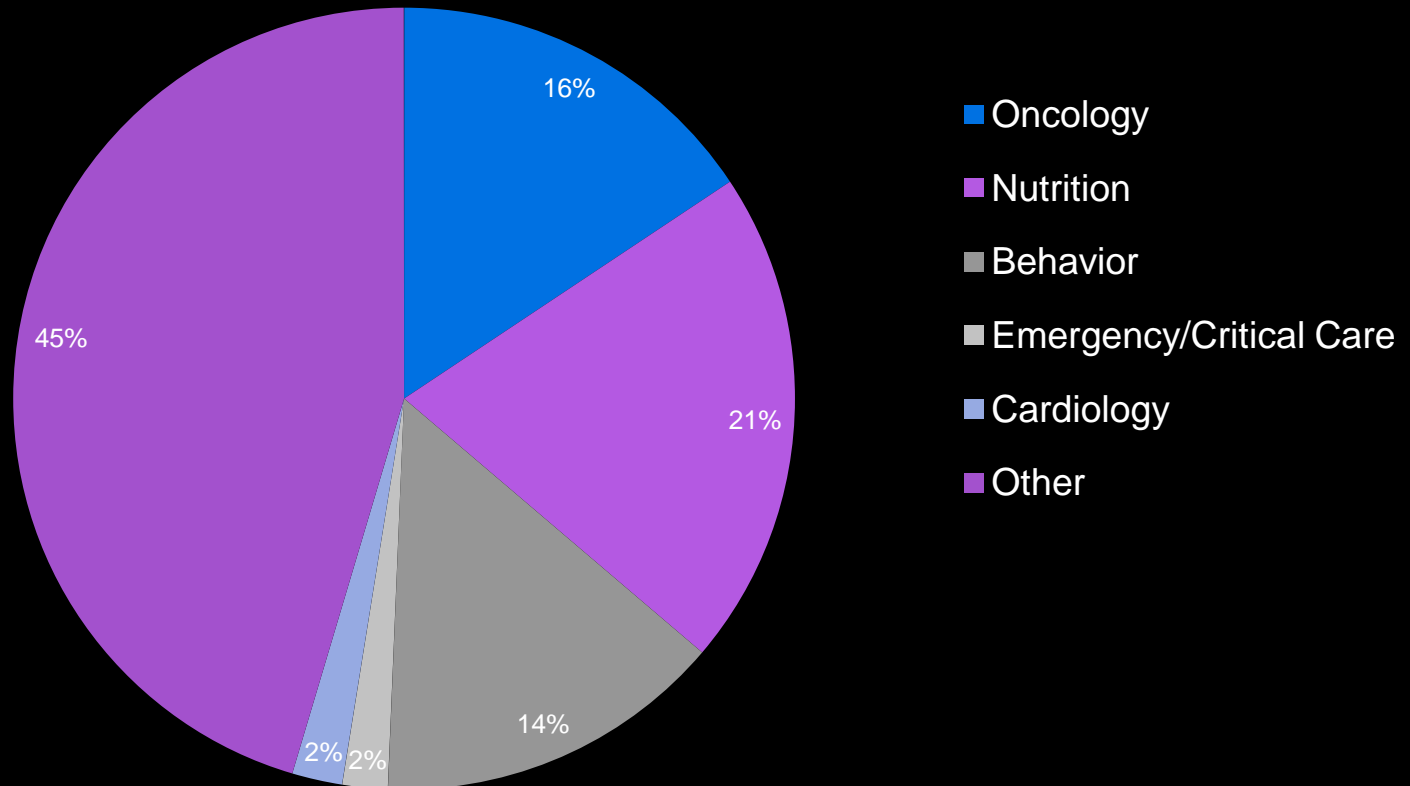
Research Expenditures by Program, 2011



Major Clinical Research Programs

- Nutritional basis of diseases:
 - Obesity, Cardiac diseases, endocrine disorder, cancer
- Comparative oncology
 - Genetics, Pathogenesis, clinical trials
- Emergency & Critical Care:
 - Sepsis, Coagulopathies, Transfusion medicine
- Behavior:
 - Genetic basis of OCD
- Human Animal Interaction
 - Animal Assisted therapy, child development, Human-Animal Bond

Clinical Research by Specialty Area 2011



Other Research Areas

- Renal Diseases
- Cardiology
- Dermatology
- Ophthalmology
- Regenerative Medicine
- Pain management
- Wildlife and Conservation medicine
- Orthopedics, Tissue Repair and Regeneration

Research Training Programs

- Summer research training for DVM students (T35)
- DVM/MS in Comparative Biomedical Sciences (T32)
- DVM/MPH
- DVM/MS in Lab Animal Medicine
- PhD Program:
 - Infectious Diseases
 - Digestive Diseases
 - Neuroscience and Reproductive Biology
 - Pathology

Research Productivity

- 39% of submitted proposals funded
- Ranked 7th nationally (Vet schools) in total sponsored research funding per faculty member
- Ranked 3rd nationally (Vet Schools) in total sponsored research per net square foot of research space

Research Productivity

In the past 3 years -

- annual publication output has climbed from 147 to 231.
- 3 patents have been registered.

Mini symposium Presentations

- *A pig model of the human gastrointestinal tract: Drs. Tzipori & Widmer*
- *Companion animals in translational cancer research: Dr. McNiel*
- *Human animal interaction (HAI) in research and clinical practice: Drs. Linder & Mueller*

Thank you
