

University of Massachusetts Medical School

eScholarship@UMMS

UMass Center for Clinical and Translational
Science Research Retreat

2011 UMass Center for Clinical and
Translational Science Research Retreat

May 20th, 5:00 PM - 7:00 PM

Outcome of Hyperkalemia in the Emergency Department: Impact of Hyperkalemic Severity, Renal Function and CHF on Survival

Venu Velagapudi

University of Massachusetts Medical School

Et al.

Let us know how access to this document benefits you.

Follow this and additional works at: https://escholarship.umassmed.edu/cts_retreat



Part of the [Clinical Epidemiology Commons](#), and the [Nutritional and Metabolic Diseases Commons](#)

Repository Citation

Velagapudi V, Barton BA, Stoff JS. (2011). Outcome of Hyperkalemia in the Emergency Department: Impact of Hyperkalemic Severity, Renal Function and CHF on Survival. UMass Center for Clinical and Translational Science Research Retreat. <https://doi.org/10.13028/tdem-ca40>. Retrieved from https://escholarship.umassmed.edu/cts_retreat/2011/posters/12

Creative Commons License



This work is licensed under a [Creative Commons Attribution-NonCommercial-Share Alike 3.0 License](#).

This material is brought to you by eScholarship@UMMS. It has been accepted for inclusion in UMass Center for Clinical and Translational Science Research Retreat by an authorized administrator of eScholarship@UMMS. For more information, please contact Lisa.Palmer@umassmed.edu.

Outcome of Hyperkalemia in the Emergency Department: Impact of Hyperkalemic Severity, Renal Function and CHF on Survival

Venu Velagapudi, MD¹, Bruce Barton, PhD² and Jeffrey S. Stoff, MD¹. ¹Renal Medicine, and ²Quantitative Health Sciences, University of Massachusetts School of Medicine.

Abstract

Background: Hyperkalemia is common and lethal electrolyte disorder with little known long-term consequences. This was retrospective, observational study of hospitalized patients with initial serum K > 5.3 mEq/L. 143 consecutive episodes of hyperkalemia were analyzed in 133 patients. Survival was analyzed by parameters of renal dysfunction (admit eGFR), CHF, admit K and EKG abnormalities.

Methods: Hazard ratios (HR) for mortality were computed by Cox proportional hazards multivariate regression. Primary end point, all-cause mortality determined by Social Security Death Index and medical record review.

Results: Admit eGFR was the most powerful predictor of mortality. The effect of renal function was nonlinear (figure 1).

Highest mortality is eGFR group of 15-59 HR 6.92. More severe renal impairment with eGFR <15 HR 4.10 and AKI requiring hemodialysis (HD) HR 3.67. ESRD had lower mortality HR 1.33 (table 1).

Hyperkalemic severity had a modest effect (figure 2). Compared to patients Admit K 5.3-5.9 mEq/L, patients with K 6-7, HR 2.21 (p=0.0210) and K >7.0, HR 2.62 (p=0.0521). History of CHF, increased mortality by univariate analysis (p<0.0001) (figure 3) but CHF had no independent effect in HD patients. In non-HD patients, CHF had an independent effect when both admit eGFR and K were added to the model, but was no longer significant when age parameter was added (table 1). Patients with EKG abnormalities had higher K (p<0.003), but these changes did not impact mortality (p=0.126).

Conclusions: Survival in hyperkalemic patients is predicted by lower admit eGFR in a non-linear fashion. ESRD patients exhibited lower mortality perhaps reflecting adaptation to chronic hyperkalemia. CHF has an additive effect on mortality in non HD patients. We emphasize that 86% of the mortality was after discharge. This extraordinary mortality necessitates the need to develop risk stratification strategies in the long-term care of the hyperkalemic patients.

Figure 1- admit eGFR and mortality (Kaplan-Meier curve)

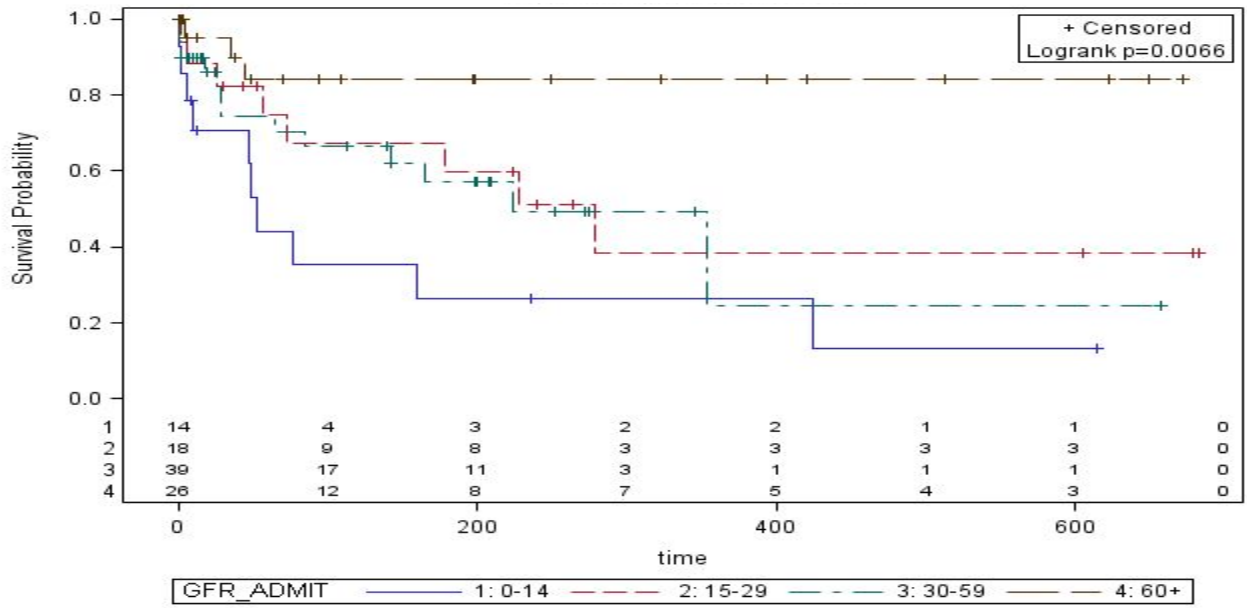


Figure 2 -Severity of hyperkalemia and mortality (Kaplan-Meier curve)

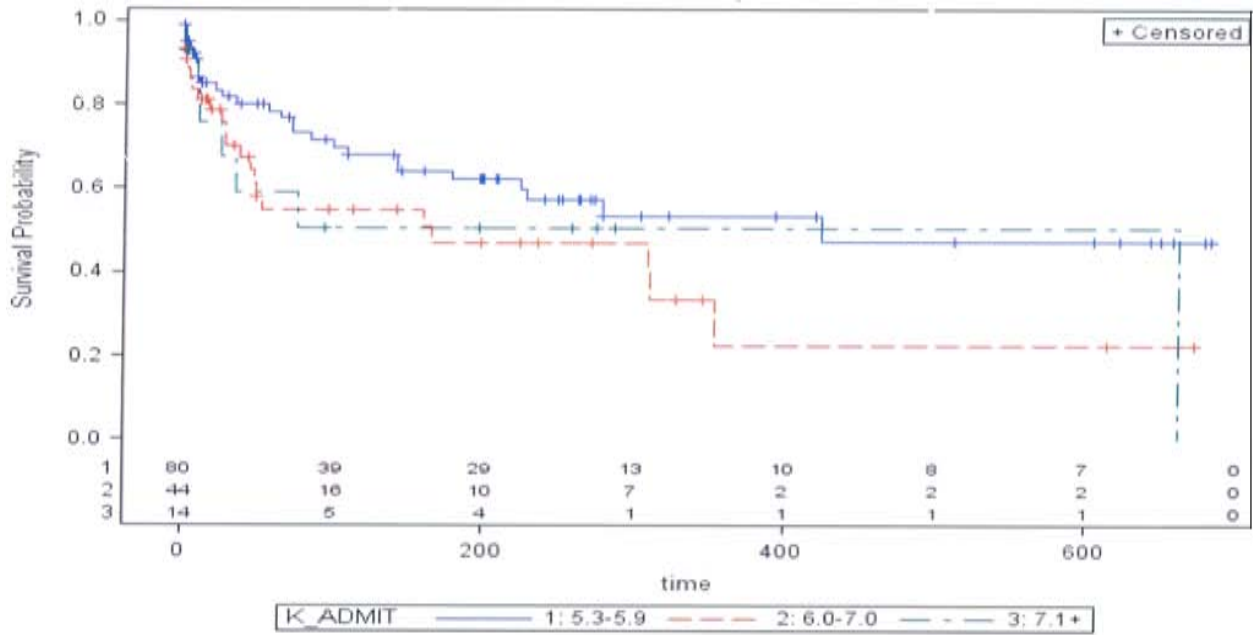


Figure 3 –CHF and mortality (Kaplan Meier curve)

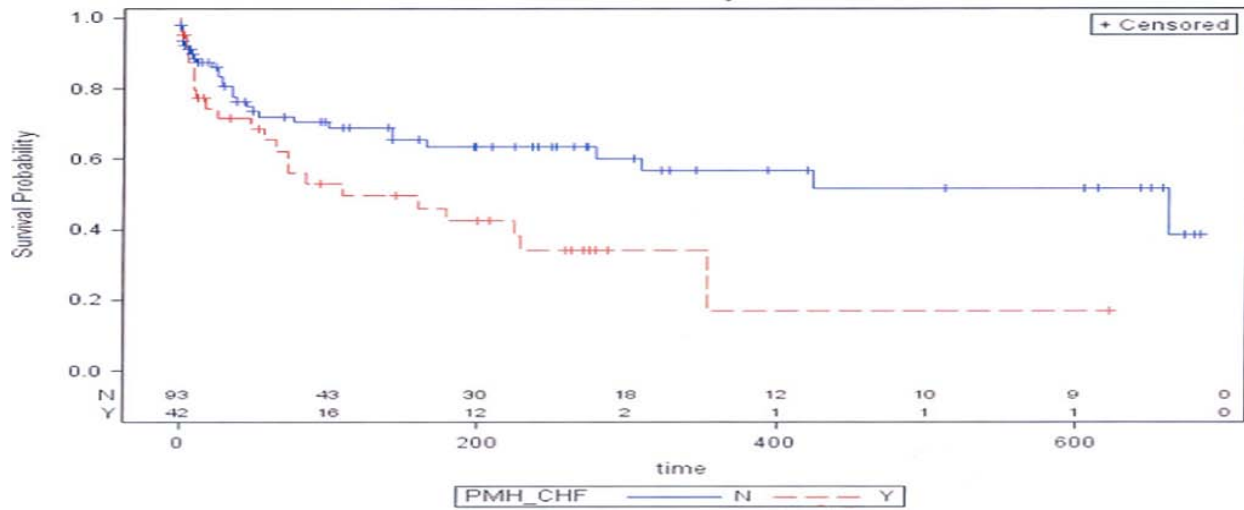


Table 1

Hazard ratios for mortality using Cox Proportional Hazards Multivariate Regression Model	
GFR <15	4.098
GFR 15-29	6.917
GFR 30-59	6.566
GFR ≥ 60	(Ref=1)
AKI needing RRT	3.666
Chronic RRT/ESRD	1.333
No HD	(Ref=1)
CHF	1.048
No CHF	(Ref=1)
Age	1.035
K 6-7	2.214
K >7	2.618
K 5.3-5.9	(Ref=1)