



# Utility Coordination Deliverables and How to Get There

Matthew Witt, INDOT  
Kenny Franklin, Parsons



Utility  
Deliverables  
aren't just  
for Final  
Tracings

*The End!*



# Should design start with a Utility Deliverable?

What if we knew what the facility was in that location

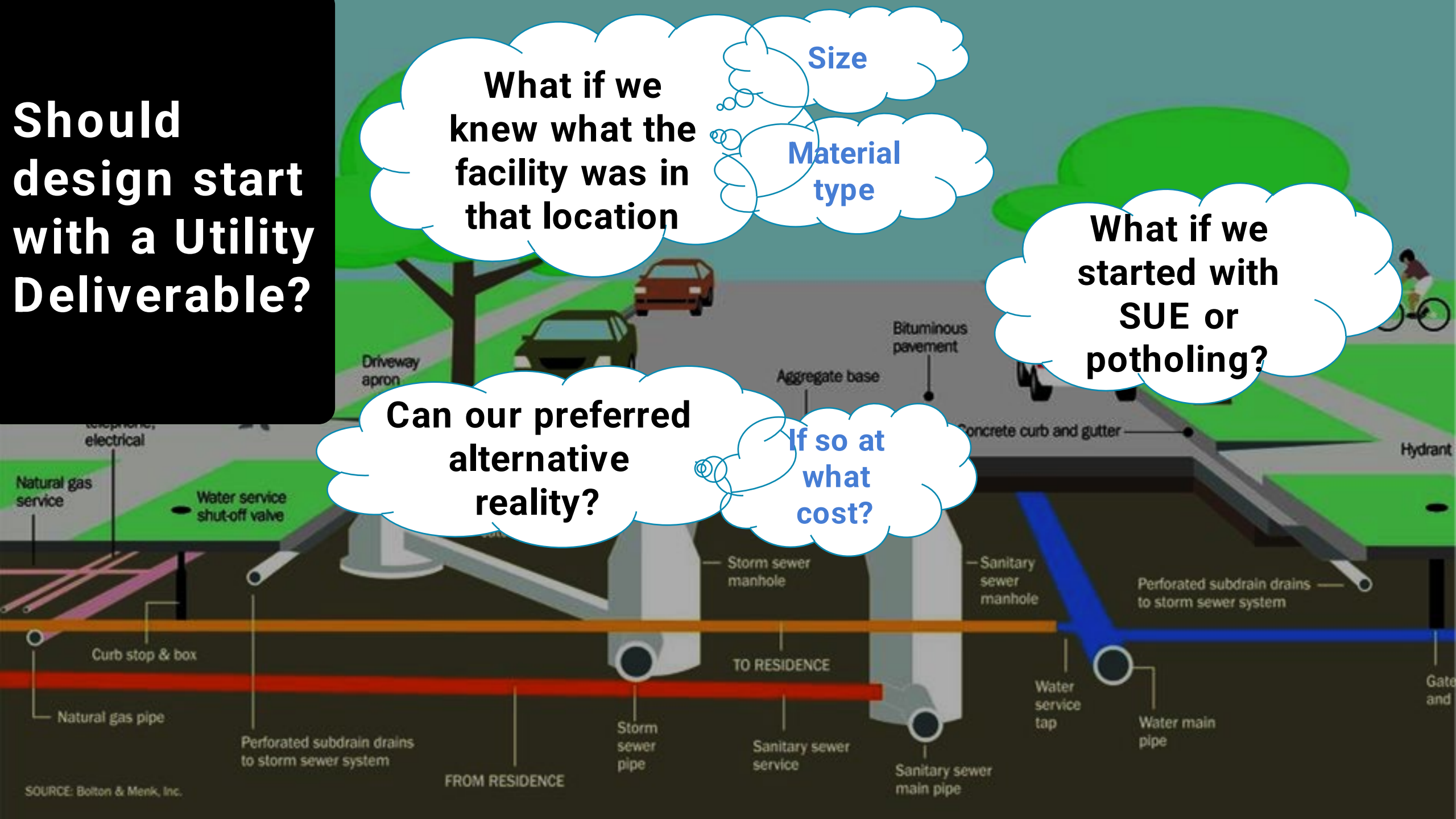
Size

Material type

What if we started with SUE or potholing?

Can our preferred alternative reality?

If so at what cost?



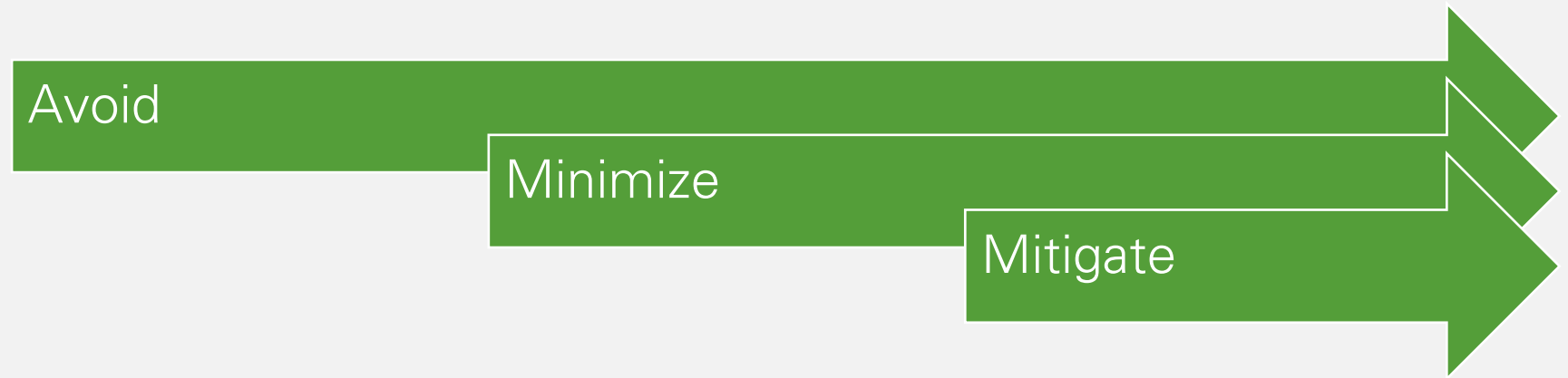
SOURCE: Bolton & Menk, Inc.

# Preliminary Field Check (PFC)

## Why is this important

- Reinforce our partnership approach
- Share and gather information
- Everyone Knows Where Everyone Goes
  - Refresh this information in NEPA
  - Identify ROW needs
- Start discussions about future staking and clearing of ROW
- Start discussions about MOT, phasing, sequencing and other Scheduling concerns
- BABA

# Preliminary Field Check



- As a team, explore design options to avoid or minimize design impacts to utilities
- Initiate QLA scope of work
- Celebrate that utilities have been avoided- everyone needs a break!

# WHAT NOW?

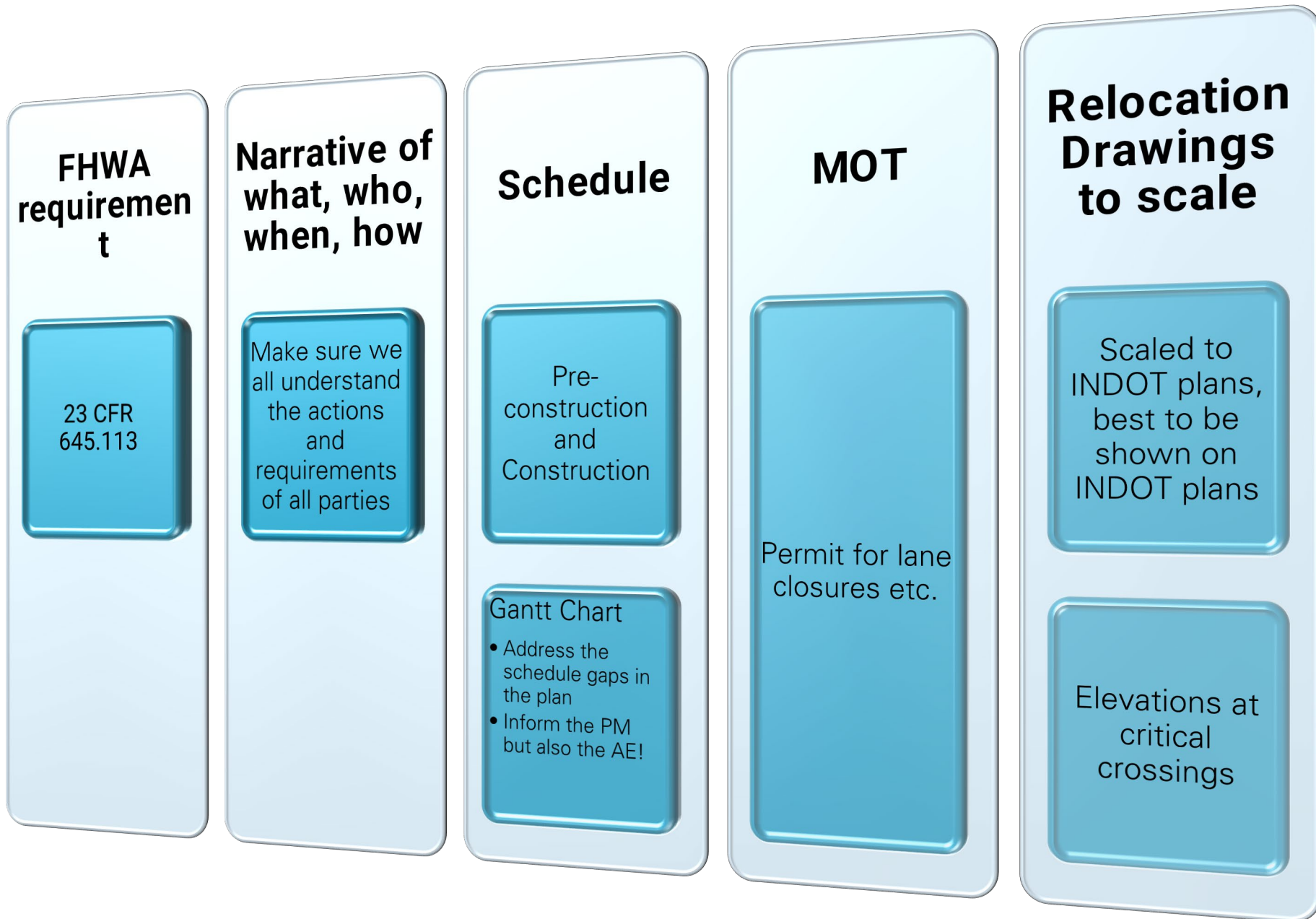
- **Have we applied what we learned at PFC?**

- Gravity or forced sewer
- Transmission or distribution
- The PSI of gas lines

- **Why is utility information important at this point?**

- Finalize right-of-way plan
- Determine environmental impacts
- Additional Information to an Environmental Document is not a plan.

# The “Why” of Workplans



# Stage 3 Plan Submittal

## Utility MOT

- Before or during contract?
- If before construction, how does it fit with other MOTs in the area?
- INDOT CARS Program

## Will we have an exception?

- RFC or Letting?

## Draft 107-R69

- Why?
  - INDOT Area Engineer can gage constructability by schedule leading to time-set
  - Ability to make last minute revisions





# Final Tracings

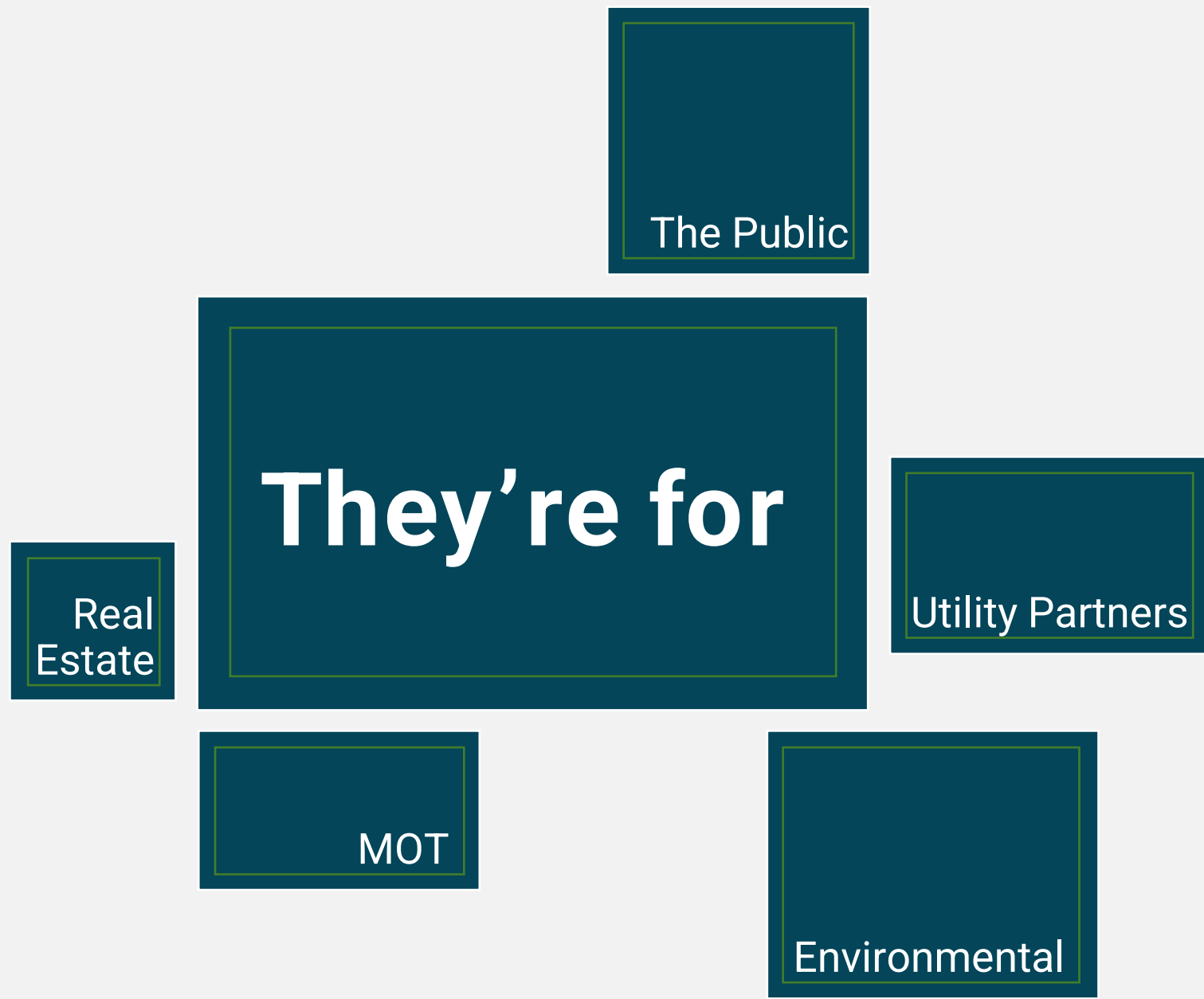
**DO NOT PASS GO**



## Polished 107-R and Utility Cert.

- No less than 30 days before RFC
  - RFC is the last day the project Manager must upload a contract to Contracts
- If the Cert has exceptions the exception must be approved by INDOT Utility administrator, then approved by the Managing Director of Project Delivery
  - If this is the case, we will need a Gantt Chart to assist in explaining impacts of the exception

# Utility Deliverables aren't just for Utility Coordination



---

Thank you

