

ARE PROFESSIONAL SOCIETIES WORTH IT?



SARAH BATY, PE, PTOE

PURDUE ROAD SCHOOL 2023

Professional Societies



Professional Development

- Continuing education to retain licenses and certifications
- Conferences and events
- A forum to address industry topics



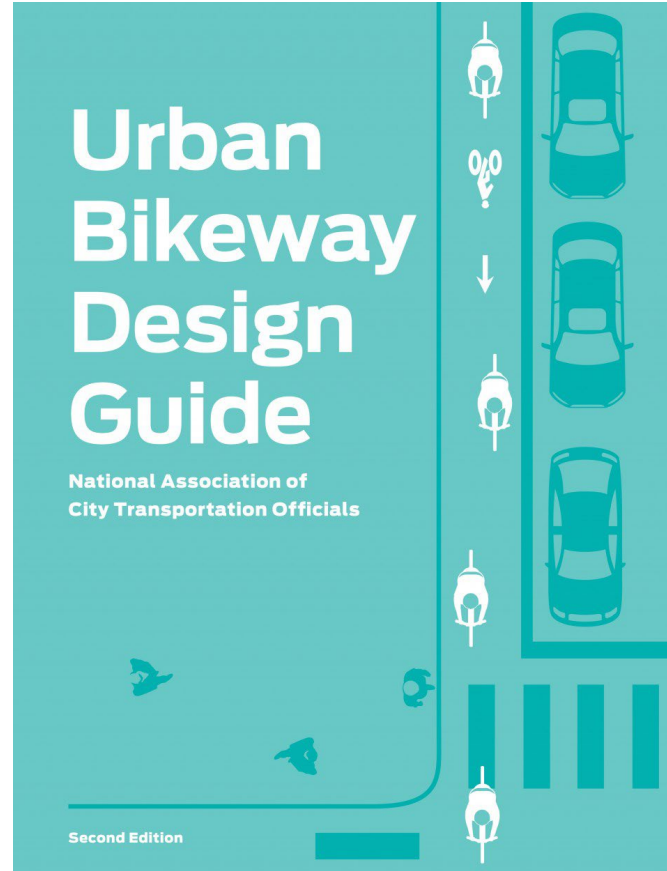
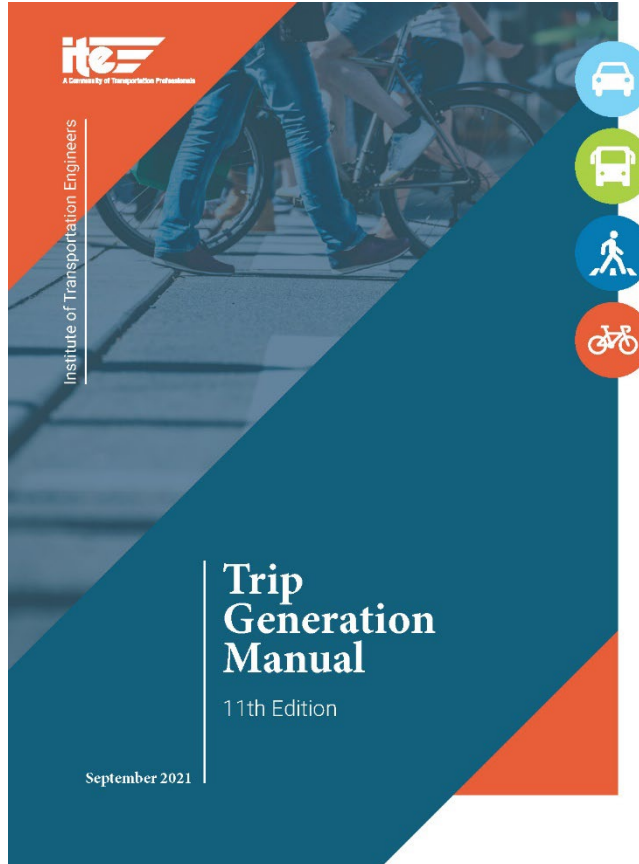
ITE Panel on Vulnerable Roadway Users

Tours

- Indianapolis International Airport air traffic control
- Walking/biking on Cultural Trail
- IndyGo facility and Red Line BRT
- Traffic Management Center



Best Practices & Guides



Advocacy & Legislation

Infrastructure
spending

Regulatory
legislation

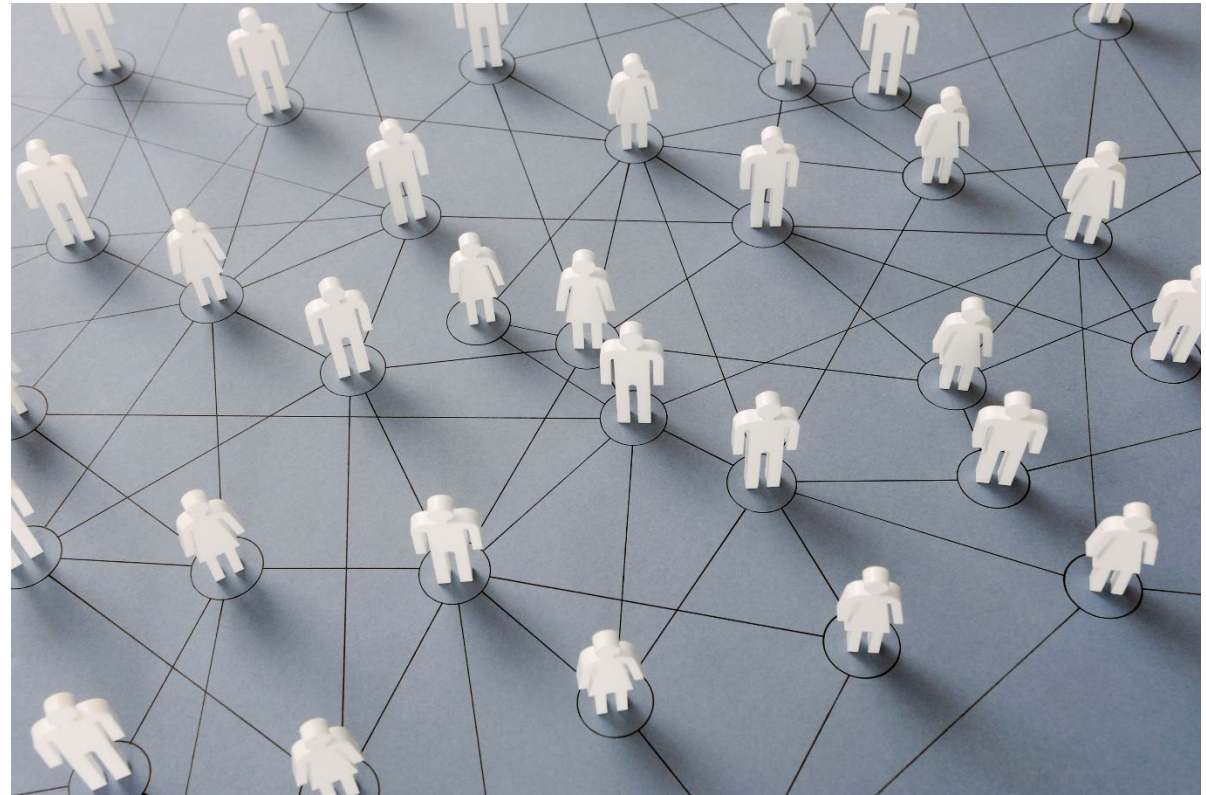
Zoning
reform

Autonomous
vehicles

Climate
action

Networking and Community

- Hiring managers
- Clients
- Consultants
- Mentors
- Colleagues



Future Workforce

- Engineers, planners, scientists, surveyors, etc.
- Retention
- STEM Outreach



Joining the Workforce

- Support between college and full-time work
- Opportunity to meet potential employers
- Prepare with mock interviews or headshots
- Annual ITE student dinner and poster presentations at Purdue and Trine

ITE Purdue Student Dinner
Poster Presentations

Leadership Opportunities

- Opportunities for student leaders
- Volunteer on a local committee or board
- Regional or national opportunities



Professional Certifications



ARE PROFESSIONAL SOCIETIES WORTH IT?

SARAH BATY, PE, PTOE
LEAD TRAFFIC ENGINEER
sarah.baty@lochgroup.com
