

116 TH STREET



NICKEL PLATE TUNNEL AT 116TH STREET

MARCH 15, 2023



INTRODUCTION



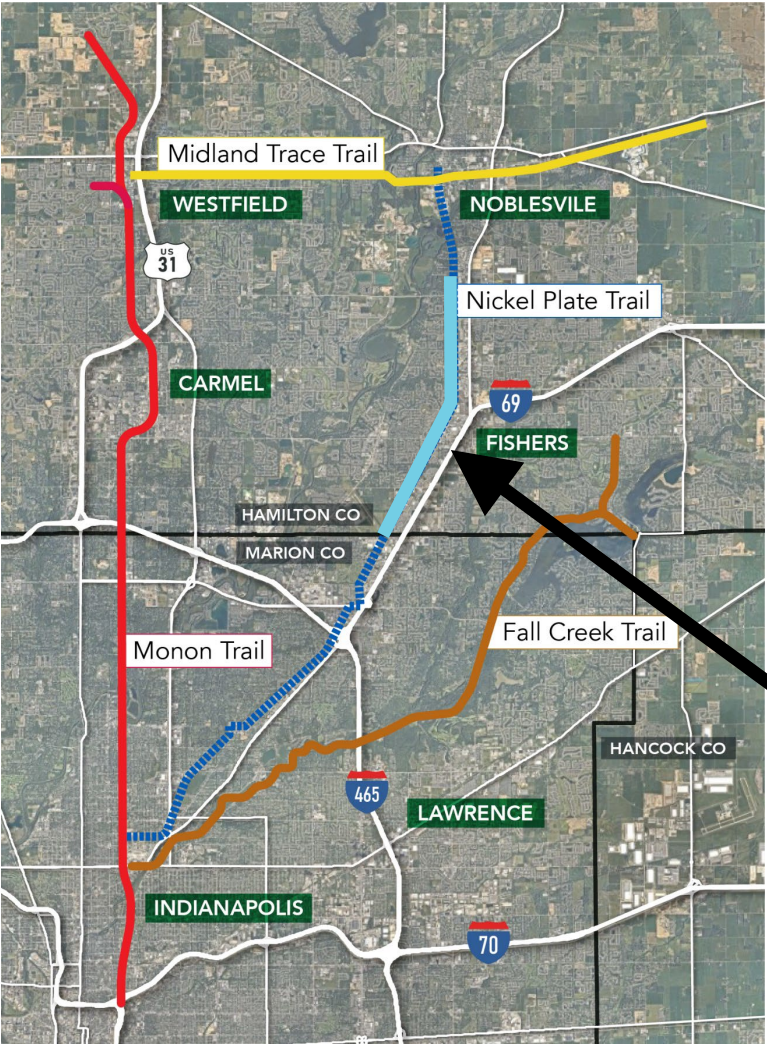
- Goals of Project
- Procurement
- Utility Coordination
- Design and Construction
- Q&A

PURPOSE AND GOALS



- Navigate The Nickel Plate Trail Through the Downtown City Core in a Safe and Efficient Manner
- Develop High-Use Public Space
- Increase Visibility and Access to Plaza Areas Adjacent to 116th Street
- Ensure Accessibility to All Trail Users
- Provide a Safe Environment
- Create a Place of Experience/Destination

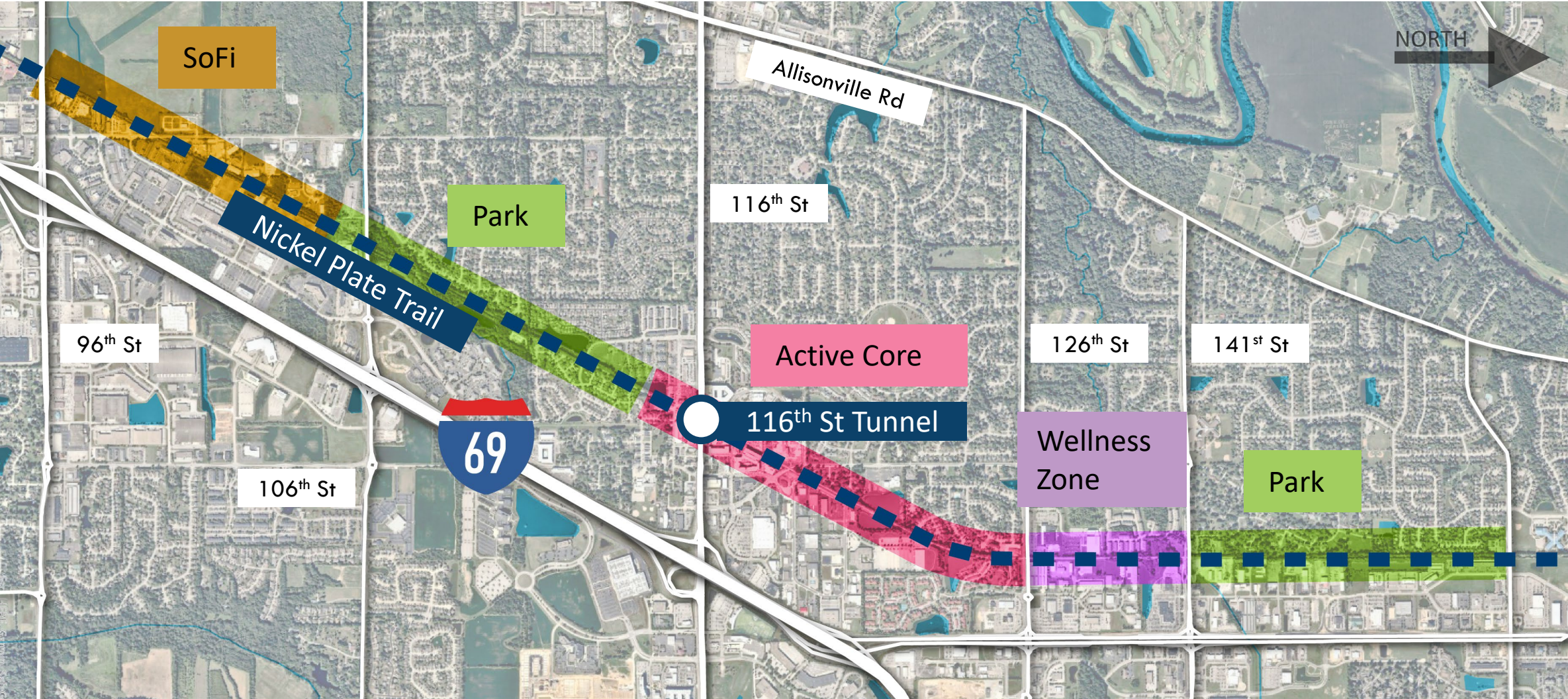
VISION



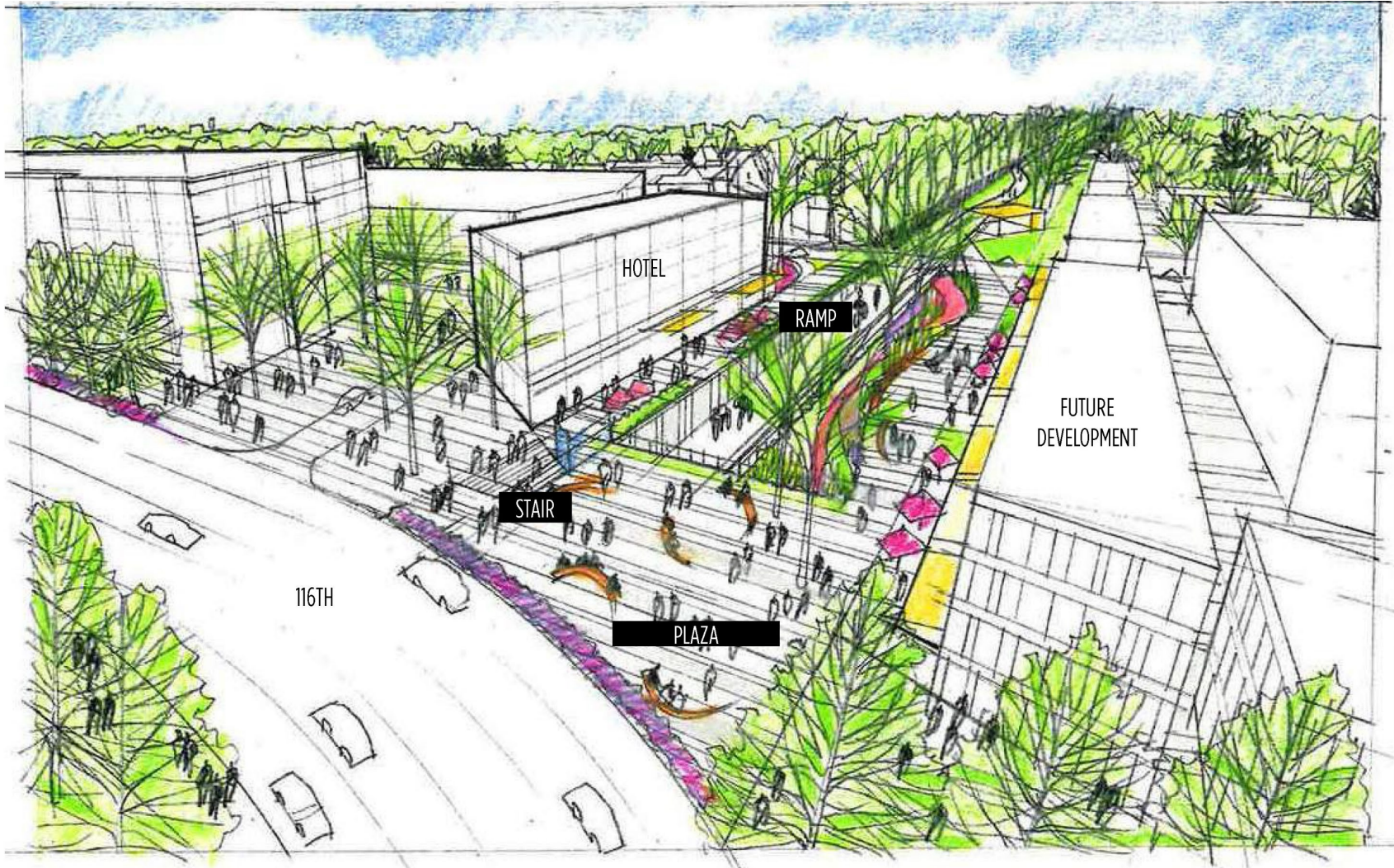
In partnership with Indianapolis, Noblesville, and Hamilton County, there will be a 42+ mile connected trail network that includes the Nickel Plate, Midland Trace Trail and the Monon Trail!

Fishers Segment

VISION



ARCHITECTURAL CONCEPT



PROJECT DELIVERY METHODS



GUARANTEED
SAVINGS
CONTRACT
(GSC)
IC 36 1 12.5

DESIGN
BID
BUILD
IC 36 1 12

DESIGN-BUILD
IC 5 30

PUBLIC-PRIVATE
AGREEMENTS
(BOT)
IC 5 23

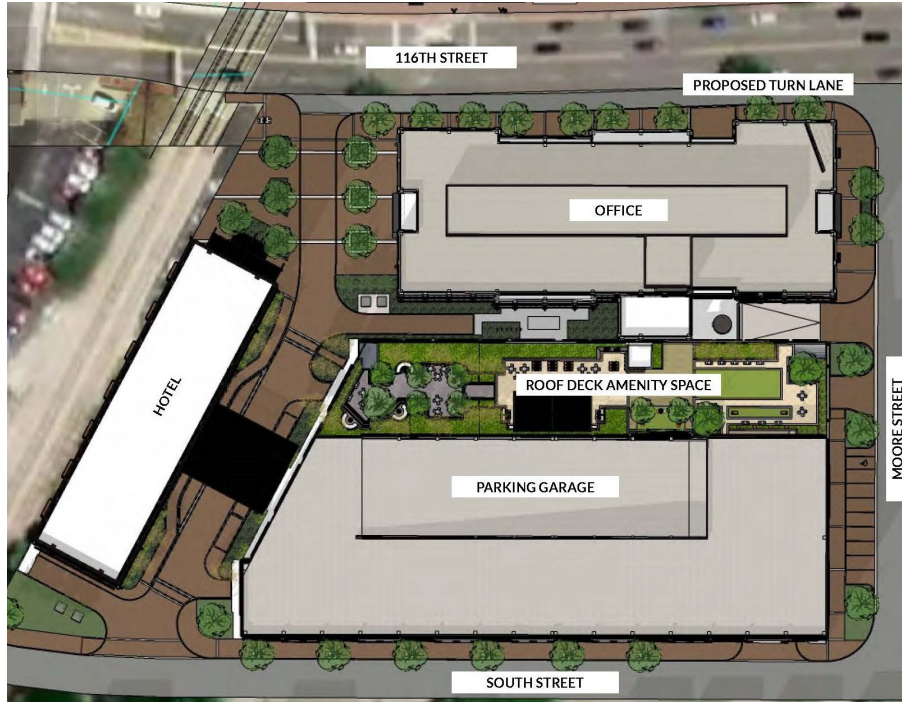
CONSTRUCTION
MANAGER AS
CONSTRUCTOR
(CMc)
IC 5-32

PUBLIC-PRIVATE
AGREEMENTS
(BOT)
IC 5 23

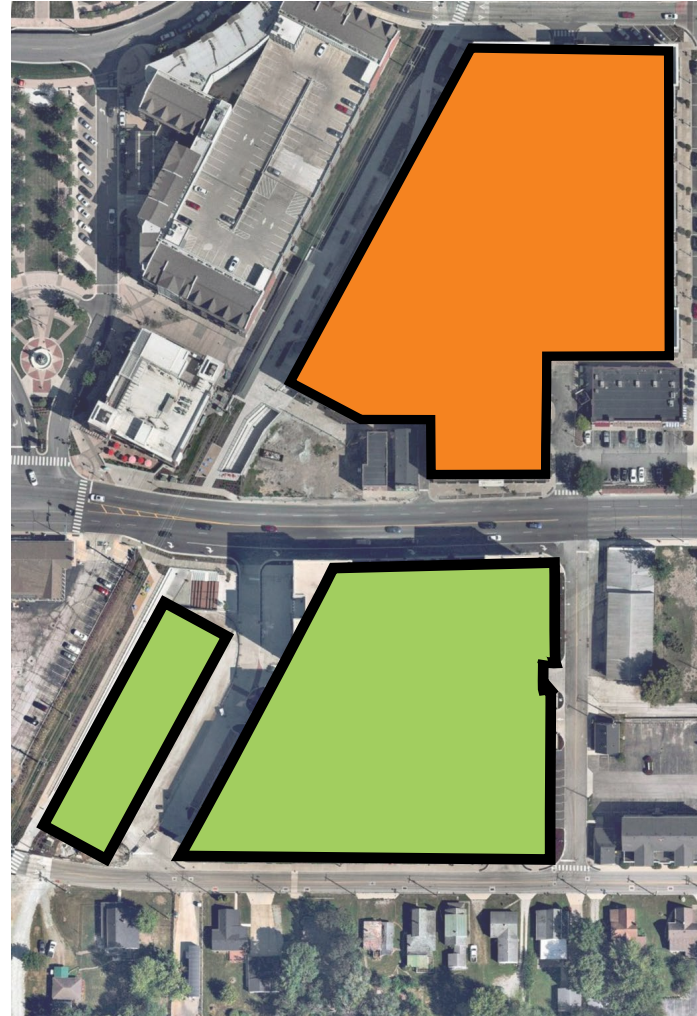
INCLUDE:

Any public building, highway, street, alley, bridge, sewer, drain, or other public facility that is paid for out of public funds

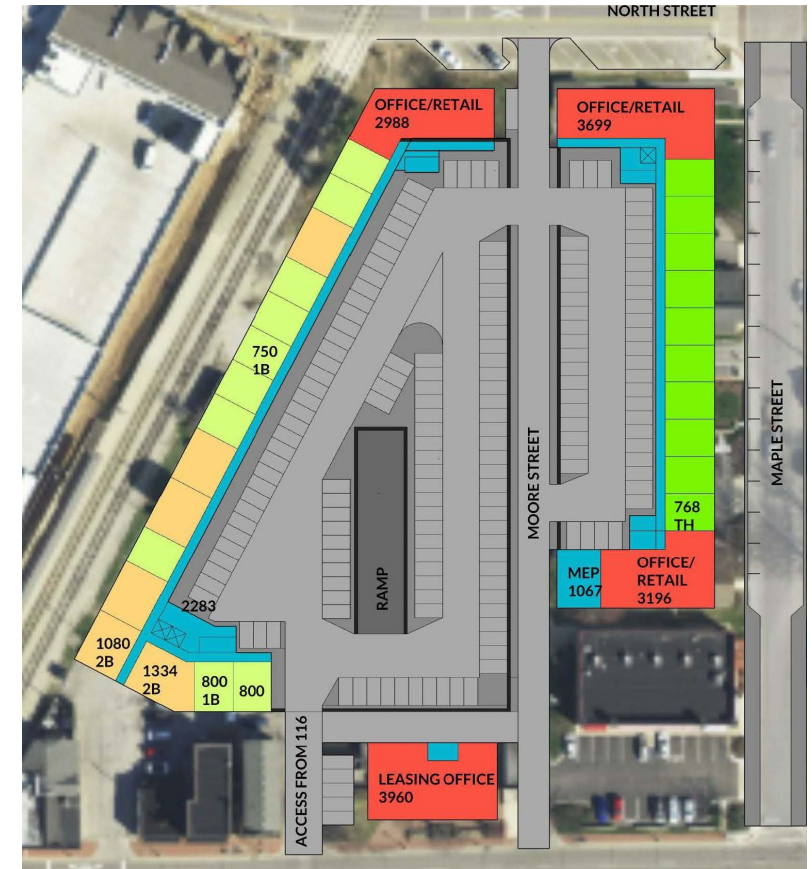
ADJACENT CONSTRUCTION



SOUTHEAST QUADRANT



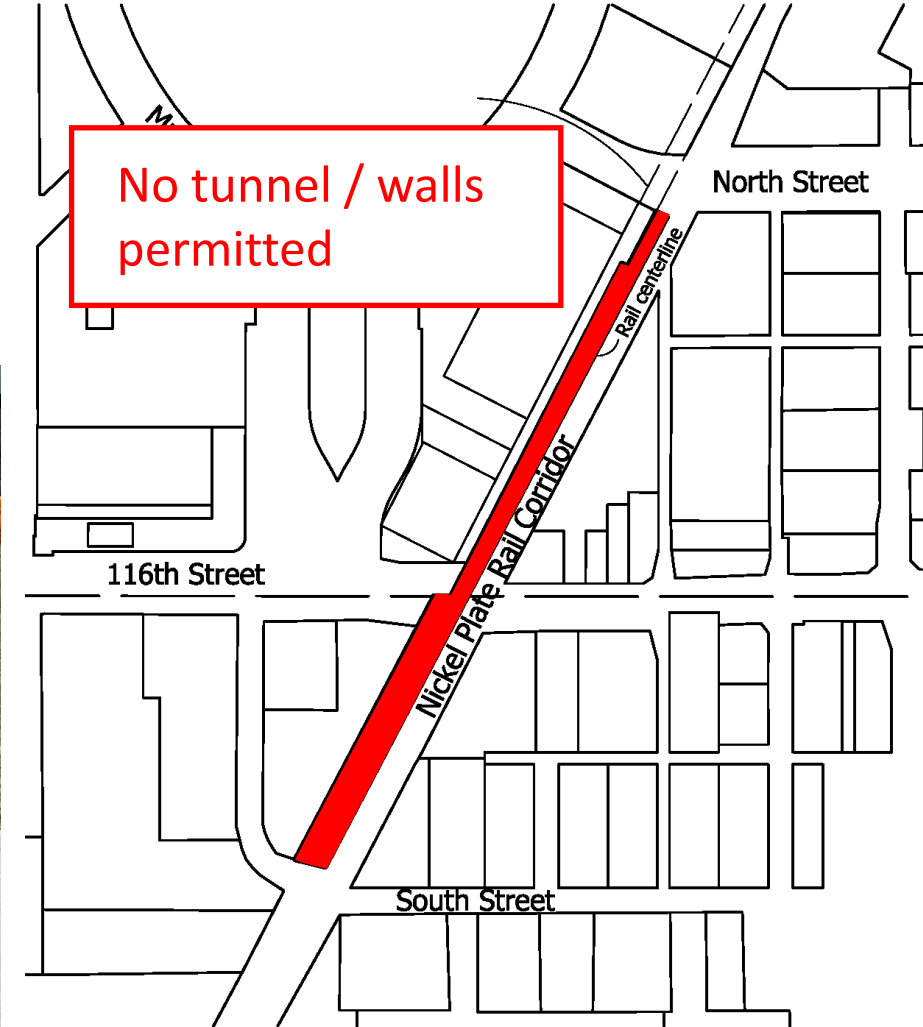
NORTHEAST QUADRANT



DUKE COORDINATION



- No Structures
- No Walls
- No Paved Surface Greater Than 12' Wide
- Protections of Facilities
- Reference Dukes trail guidelines



UTILITY COORDINATION



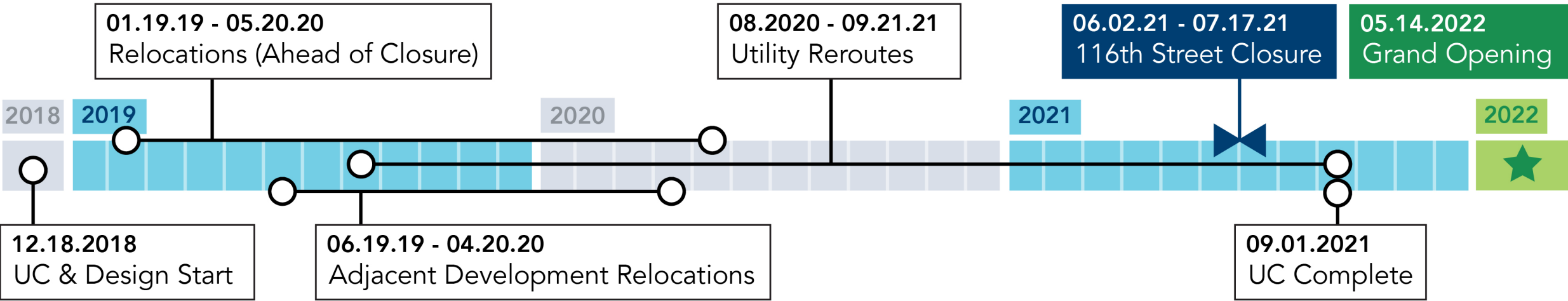
Successful Local Utility Coordination

20
UTILITIES

10
CONFLICTS

5
RELOCATIONS

- ### Critical Items to Success
- Upfront heavy communication & Stakeholder meetings
 - Utility relocation construction durations and restrictions
 - Plan for future – conduits & sleeves for future utility extensions or installations to not damage new infrastructure





Project / Utility Conflict Limits

VS

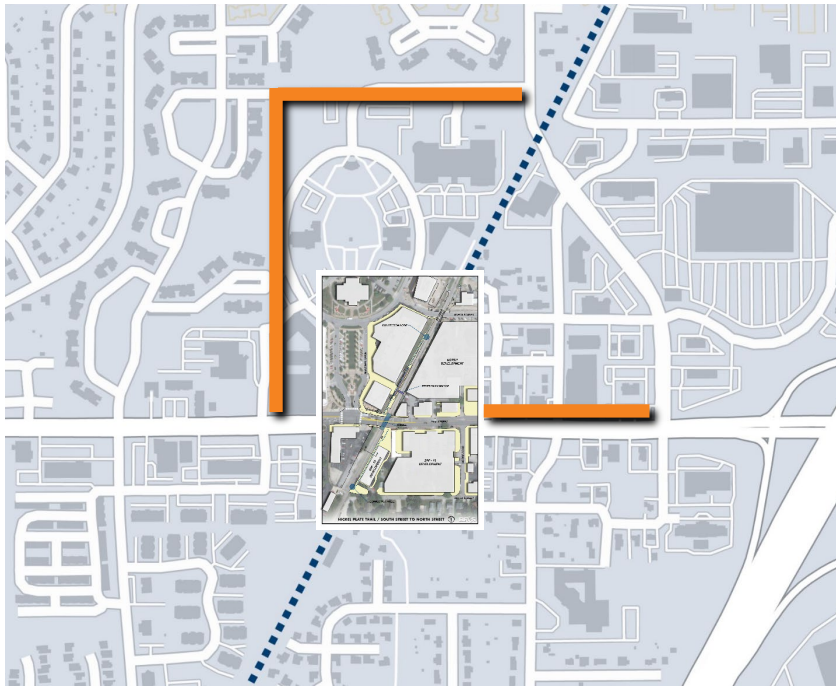
Overall Utility Relocation Limits



High Profile Relocations Fishers Gravity 10-inch – 18-inch Sanitary Utility Relocation/Reroute

Downtown sanitary re-route (GSC) project

1. Resolved tunnel conflict
2. Relieved aging downtown sanitary infrastructure
3. Redirected portions of existing and new flow to newly installed infrastructure that had capacity
4. Facilitated current adjacent and future planned downtown redevelopment

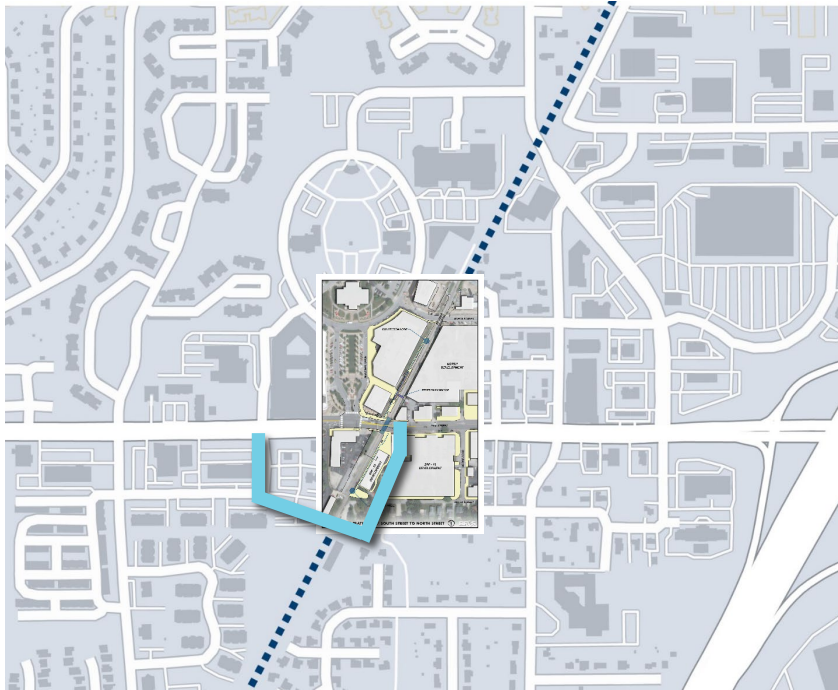


High Profile Relocations CenterPoint Energy 8-inch Steel High Pressure Distribution Gas

- Had to relocate downtown Fishers main natural gas feed
- Considered several relocation plans
- Complete development relo section FIRST
- Tunnel Construction schedule would not allow 116th Street bore
- Gas heating season schedule would not allow main to be taken of service between September and May
- Cut-capped during tunnel relocation, while working on re-route with City
- Reroute completed before heating season

10/1 – 5/1 Gas remains active

6/2 – 7/17 Tunnel Construction



UTILITY CONSTRAINTS

5/1 – 10/1 Water remains active

6/2 – 7/17 Tunnel Construction

High Profile Relocations Citizens Energy Group 20-inch Transmission Water Main

- Fishers main water main feed
- CEG transmission water main
 - Cannot be taken of service: May 1 – October 1 annually
- Considered several relocation plans
- Road closure constraints would not allow 116th Street bore
- Worked to accommodate tunnel + surrounding developments for relocation plan through south development area and Fishers South Street Road reconstruction project

Critical Elements For Successful UC

- On-going through utility vacation, utility relocation, and all project constructions
- Coordination with adjacent \$250 million + downtown development
- Project and development MOT considerations
- Planning utility relocation disturbance in future project disturbance limits (reducing overall reconstruction areas downtown)
- ATT complete Fishers – Noblesville exchange duct bank relocation
- City of Fishers fiber relocation under tunnel
- SUE (QL-B locates, test holes, televising, etc.)
- Resolution of utility constructability issues:
 - Fiber duct bank supported through construction (long hauls + public health and safety in the duct bank)
 - Duke Energy easement guideline + OSHA clearances



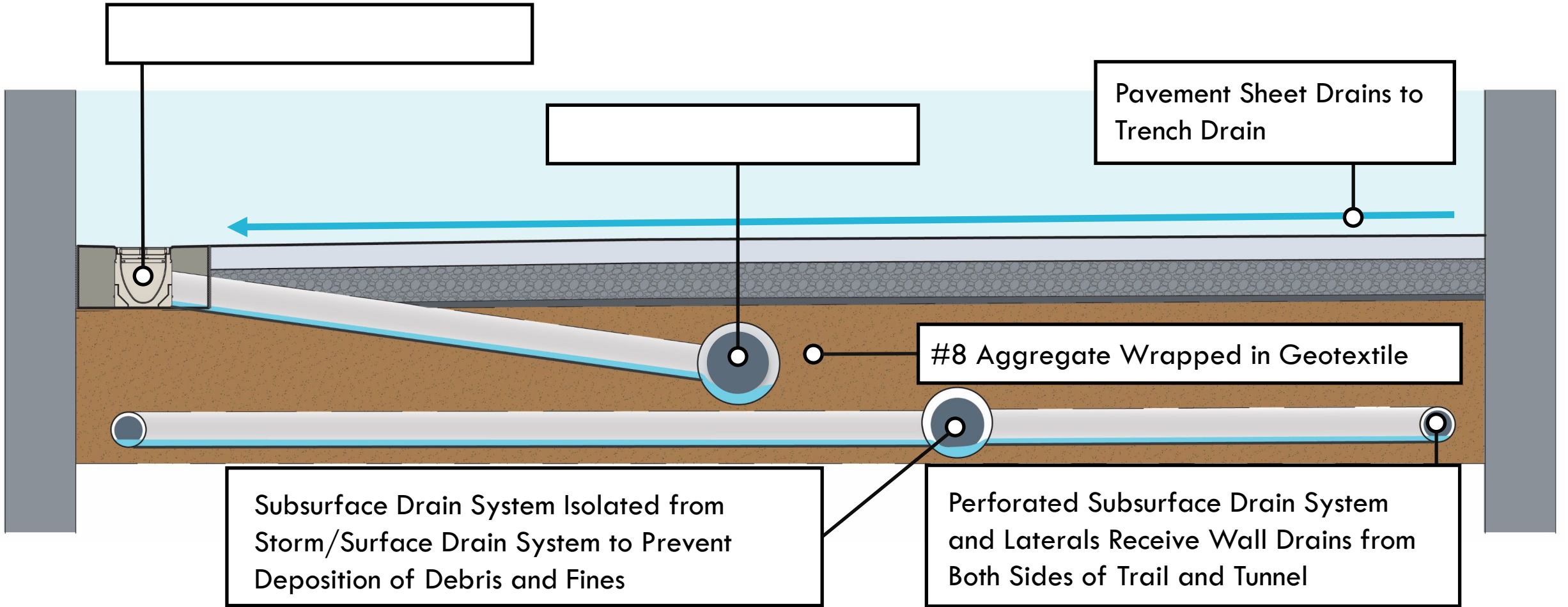
KEY ELEMENTS



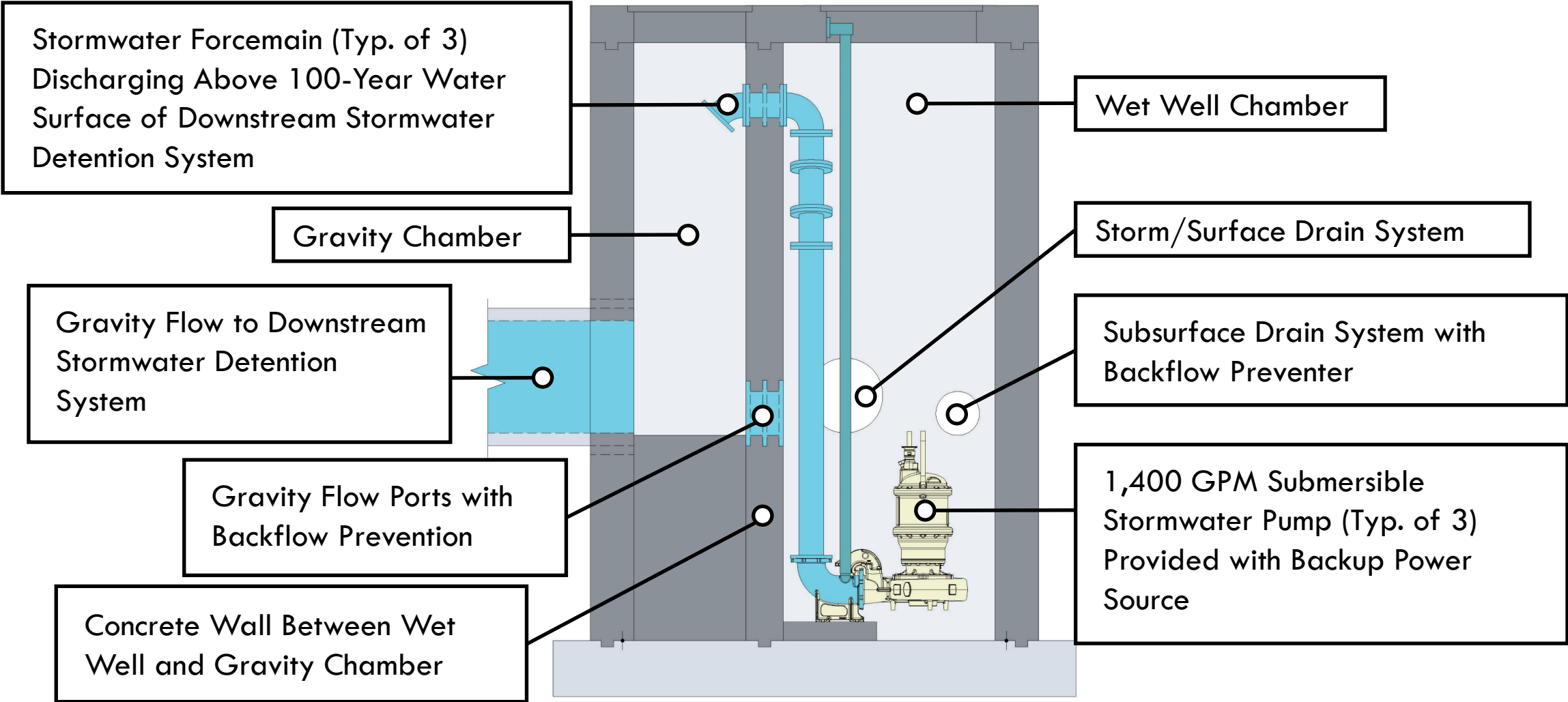
LEGEND

-  Tunnel Approaches
-  Lift Station
-  116th Street Tunnel
-  Pedestrian Bridge
-  Access Steps
-  Planting Terraces
-  Seating

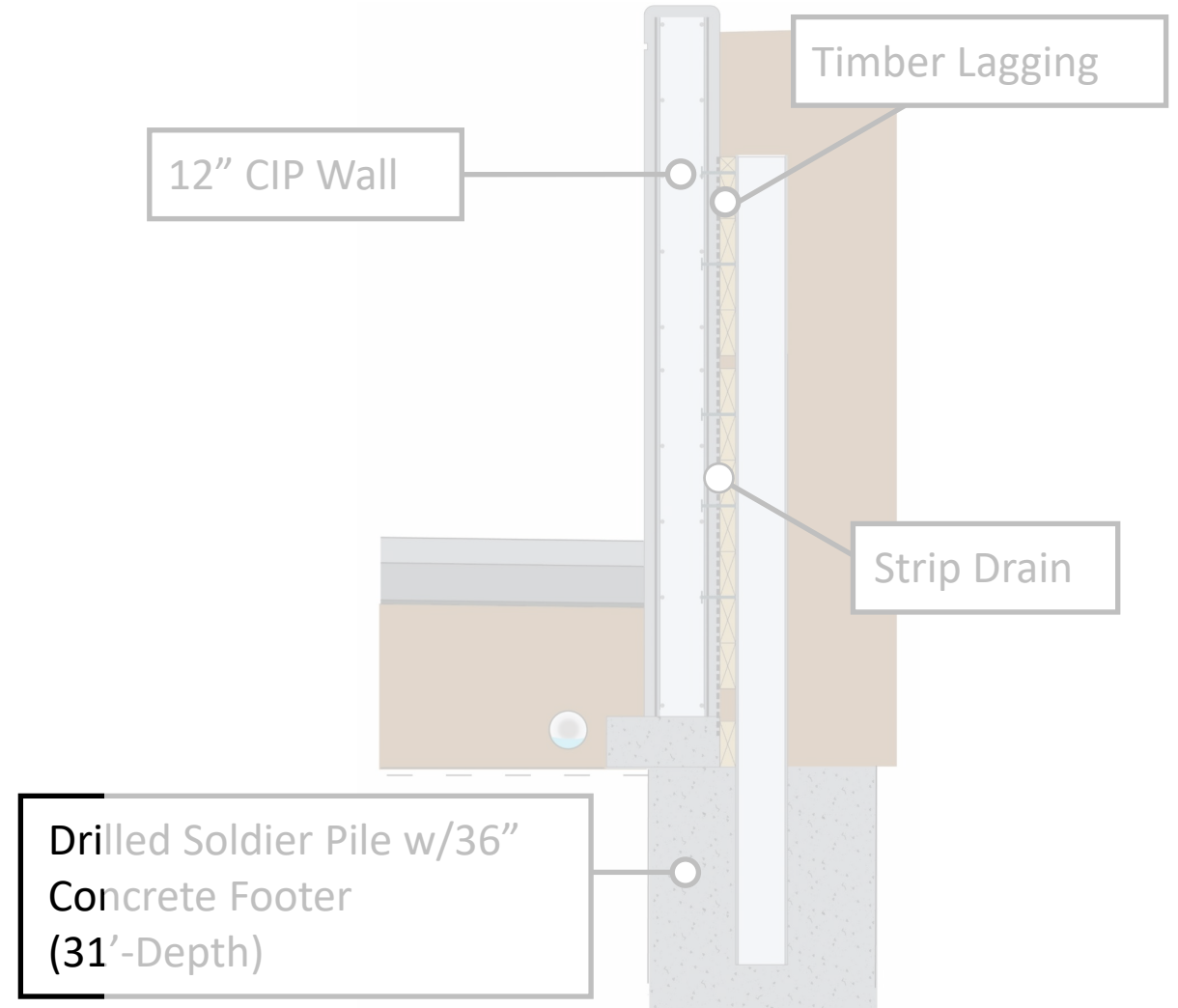
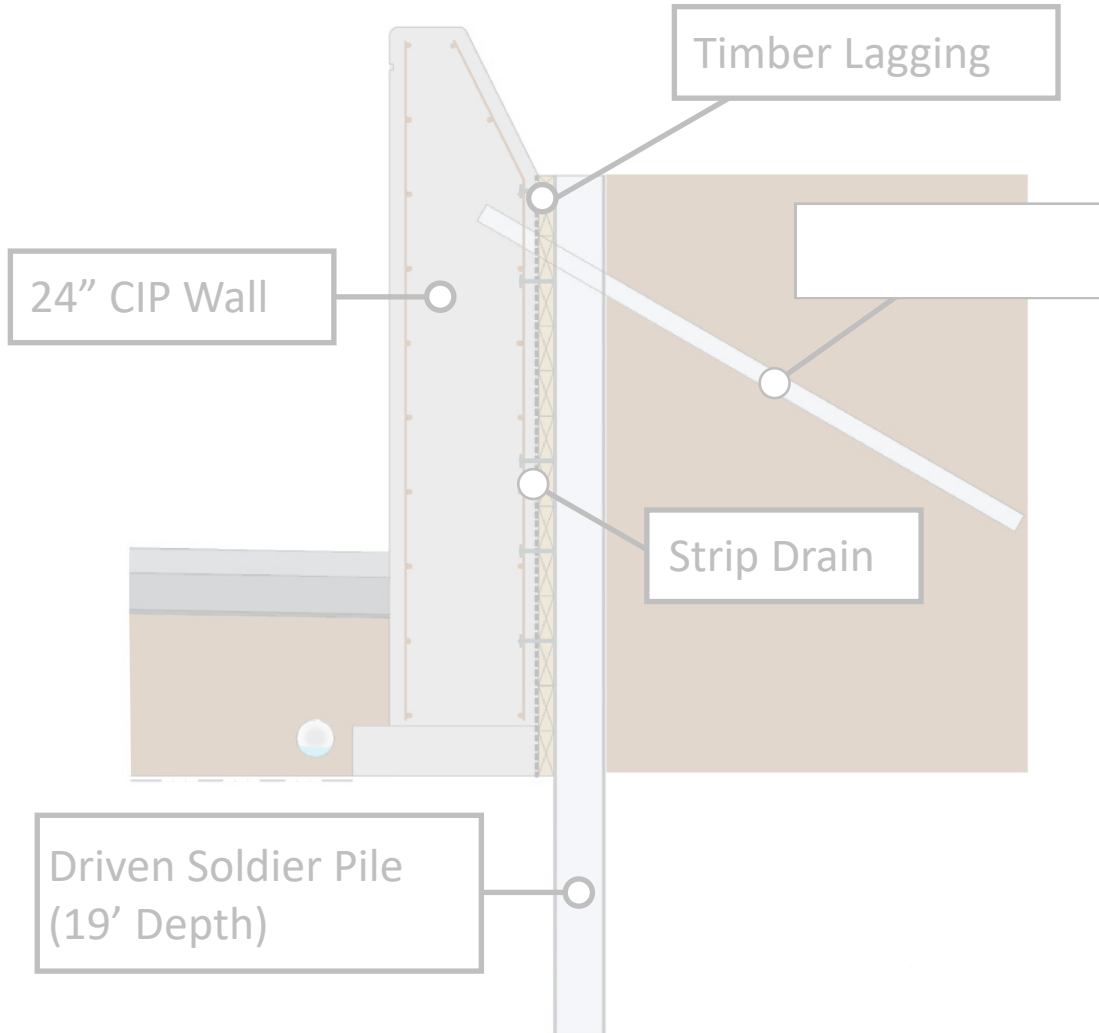
DRAINAGE TYPICAL SECTION



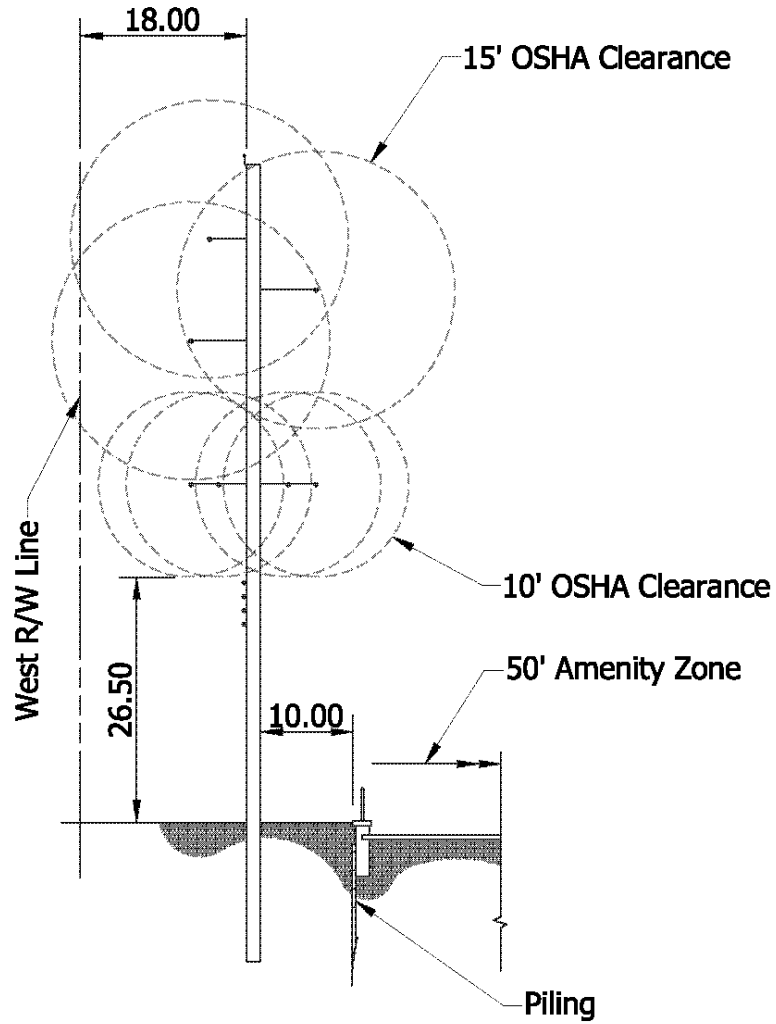
STORMWATER LIFT STATION



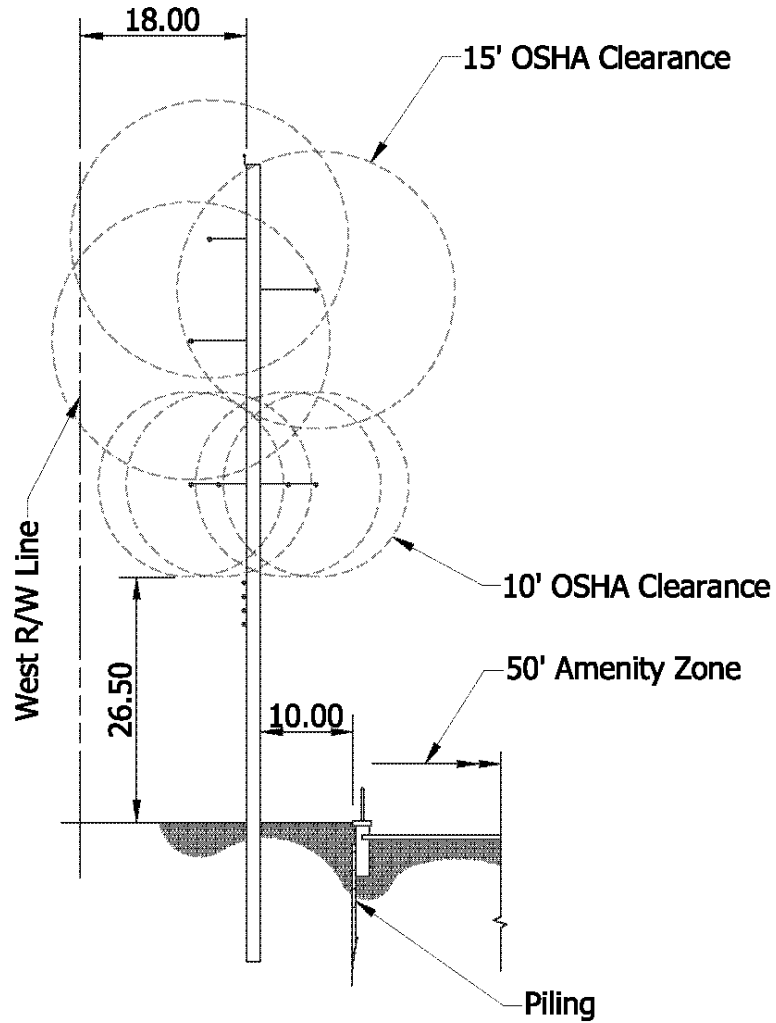
CUT WALLS



CUT WALLS – DRIVEN PILES



CUT WALLS – CONC. FOOTER



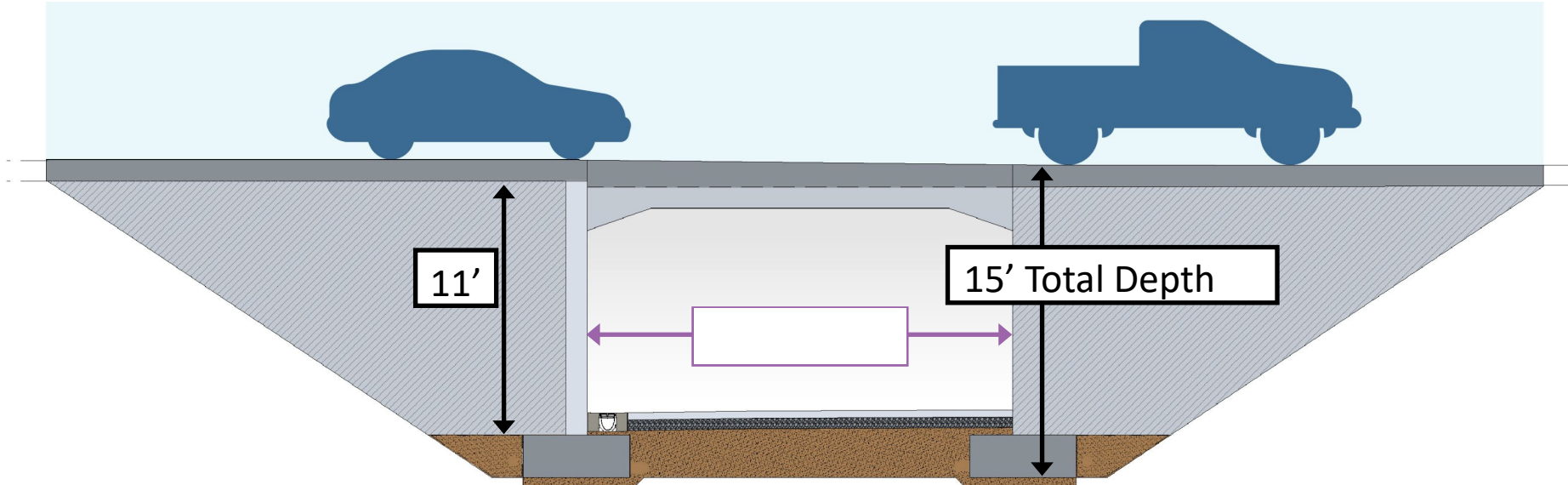
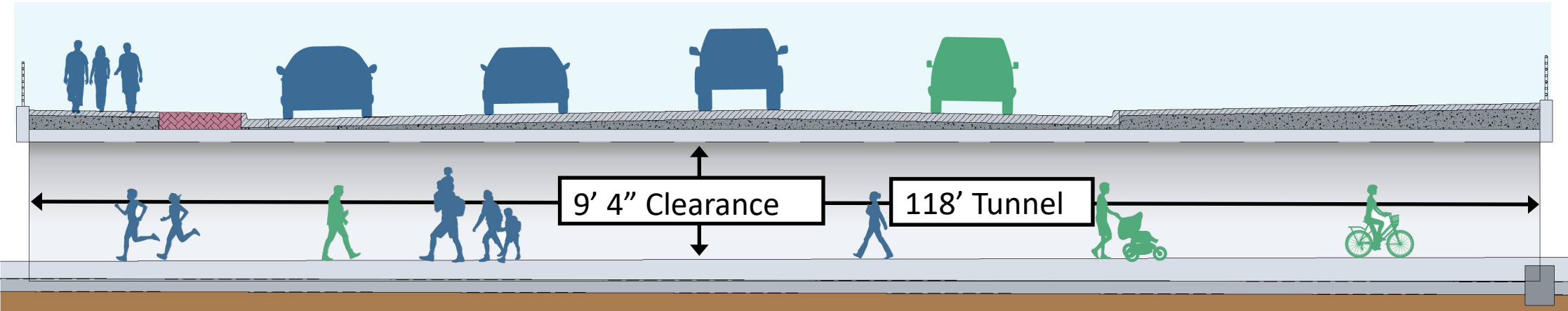
CUT WALLS – TIMBER LAGGING



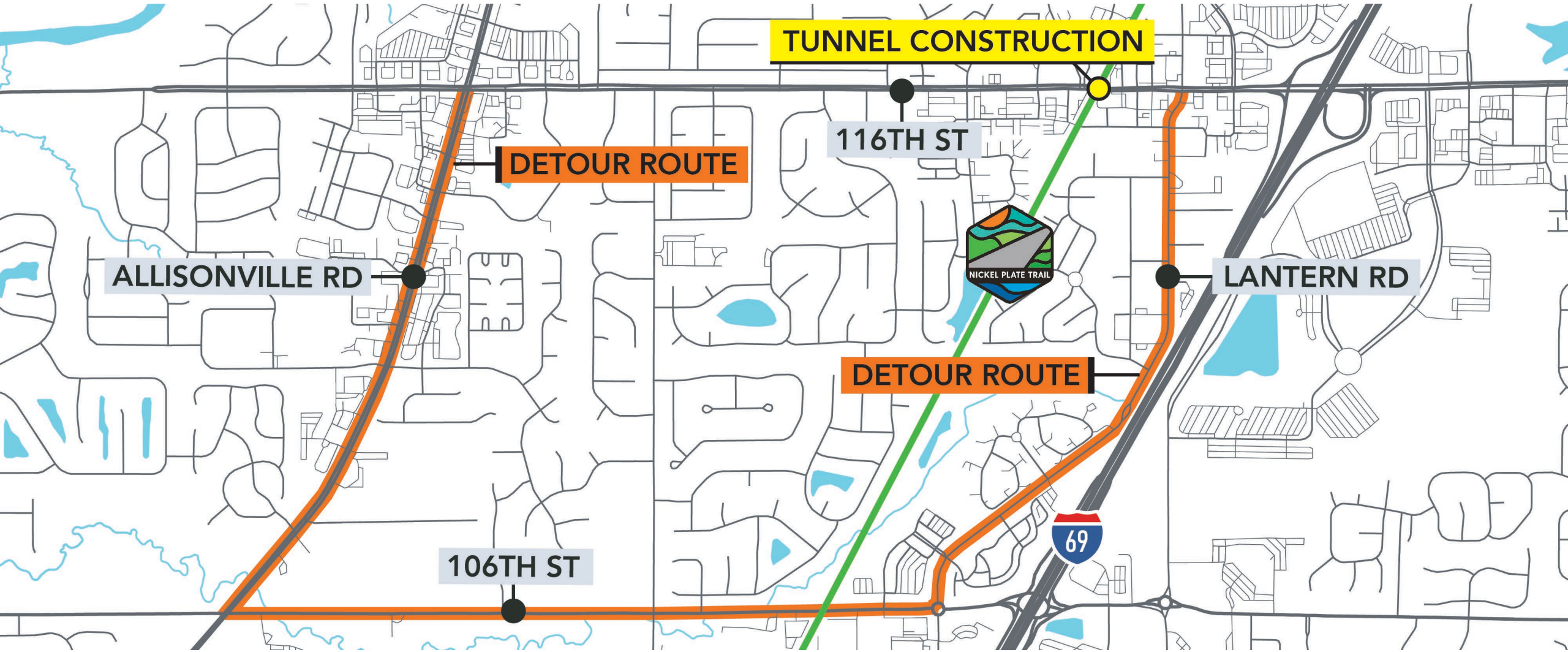
CUT WALLS – CONCRETE FACING



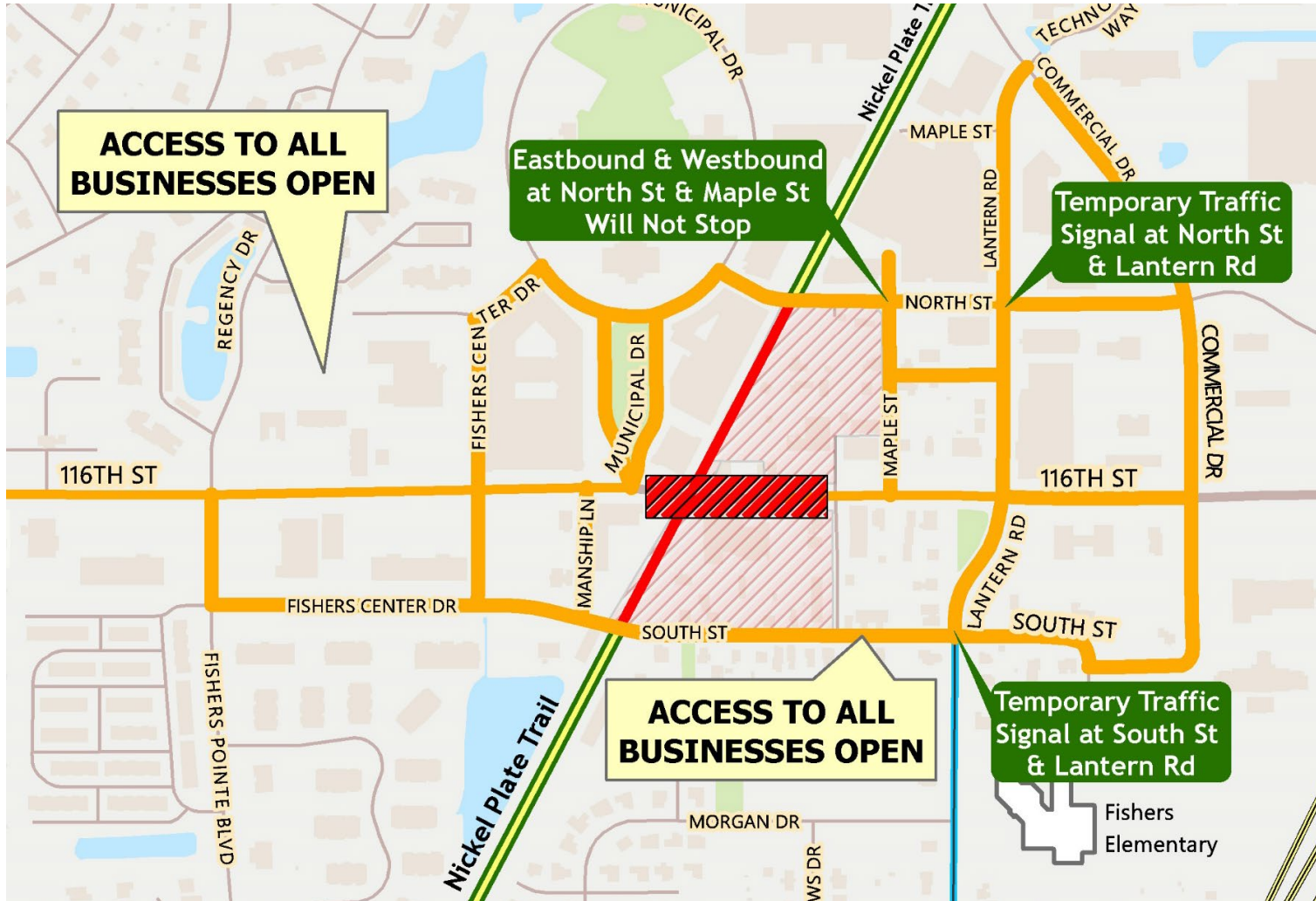
116TH STREET TUNNEL





116TH STREET CLOSURE/PUBLIC OUTREACH



116TH STREET CLOSURE/PUBLIC OUTREACH



Local Business Access Detours

-  Detour Route for Through Traffic
-  Business Access Only

116TH STREET TUNNEL



116TH STREET TUNNEL



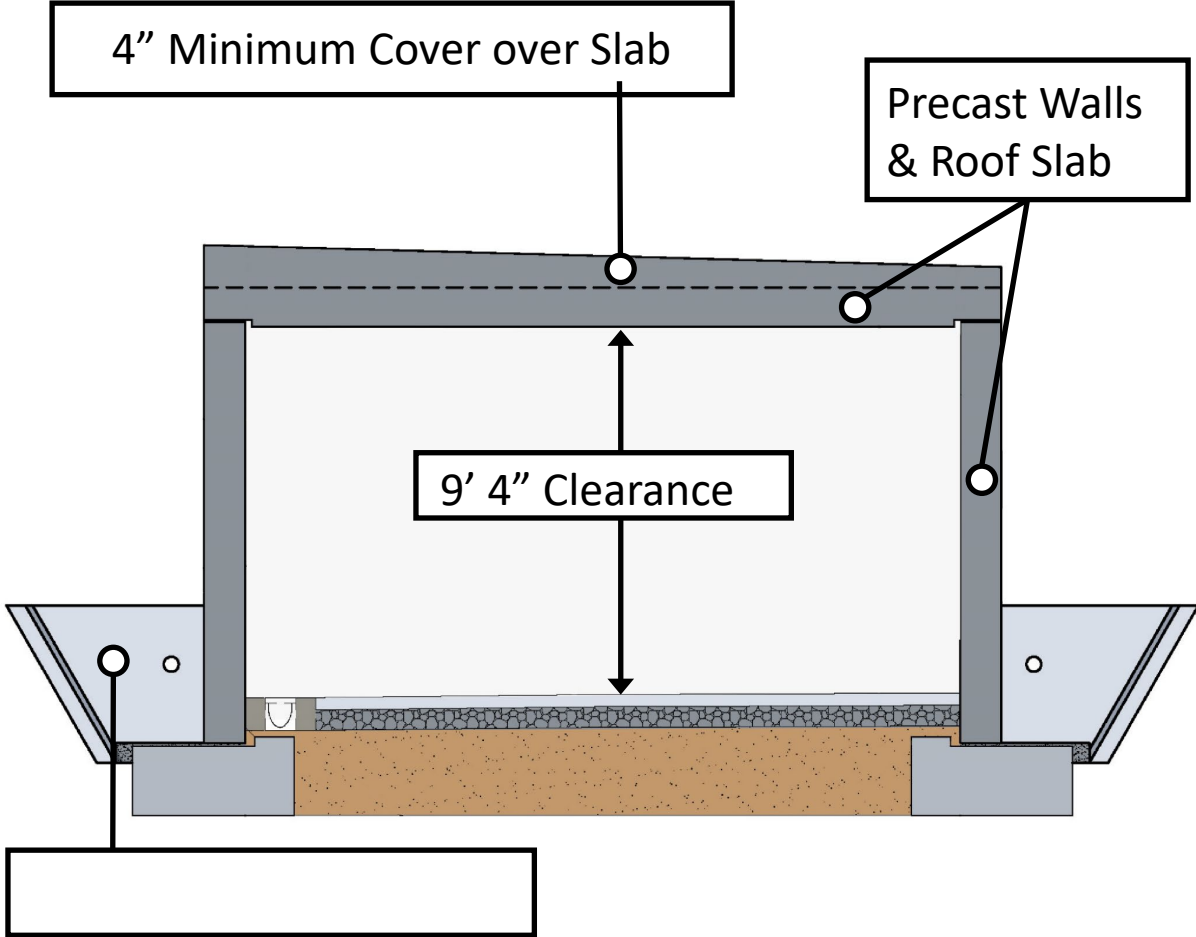
116TH STREET TUNNEL



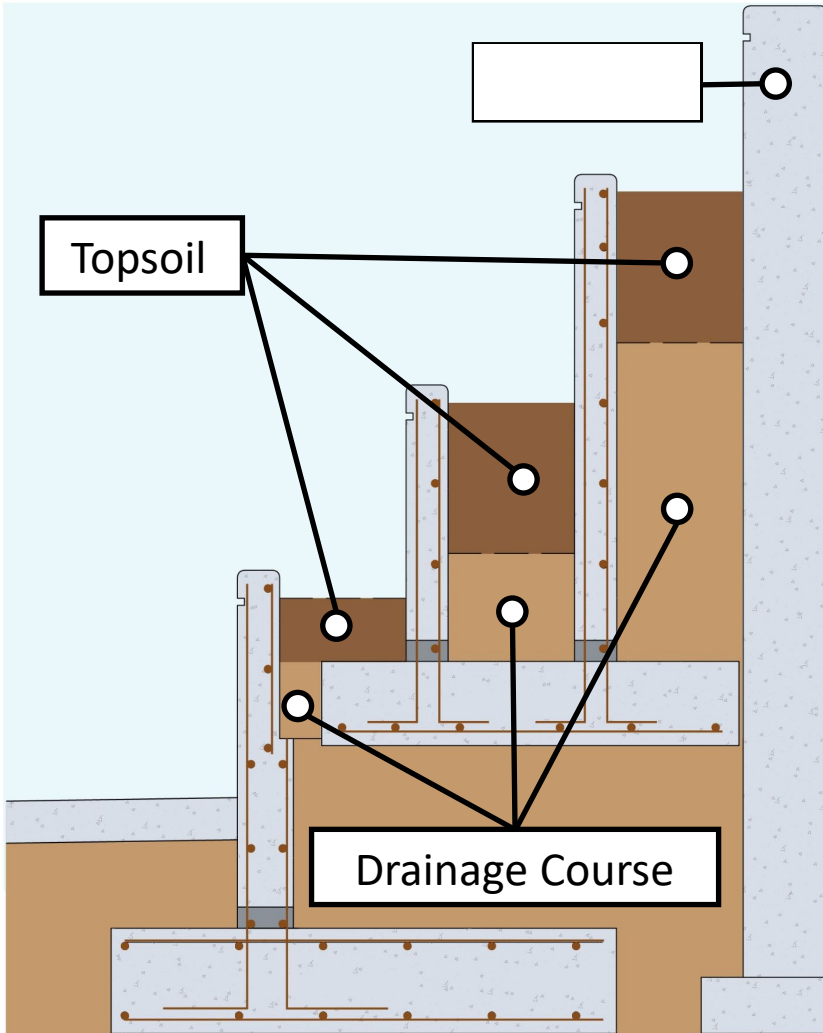
116TH STREET TUNNEL



PEDESTRIAN BRIDGE



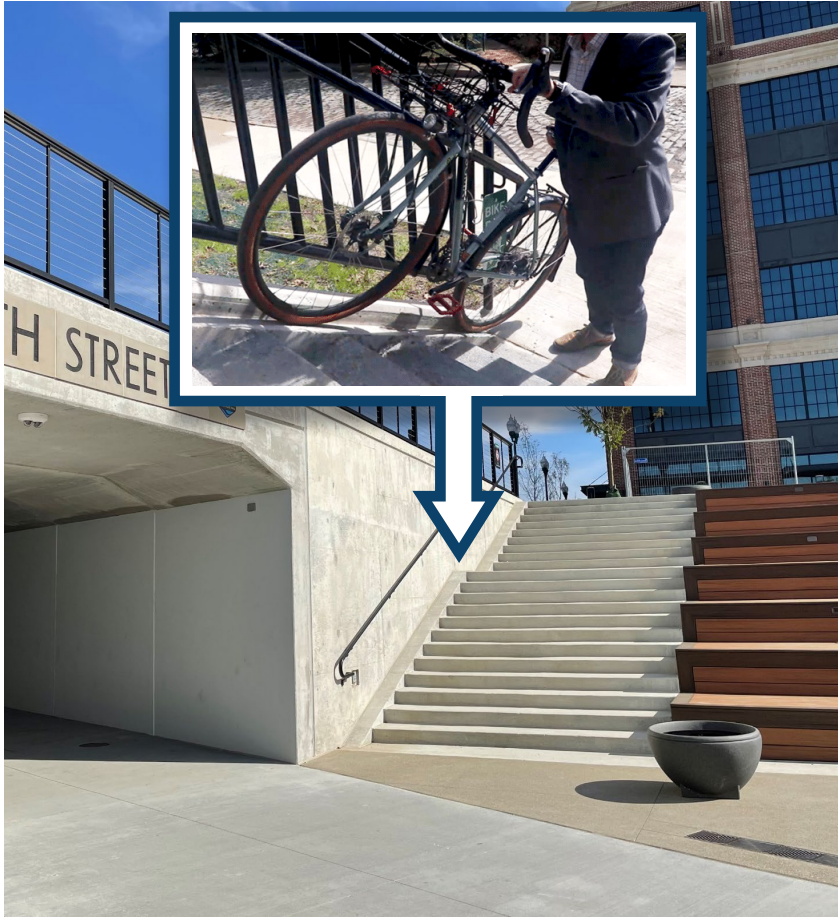
TERRACED PLANTING BEDS



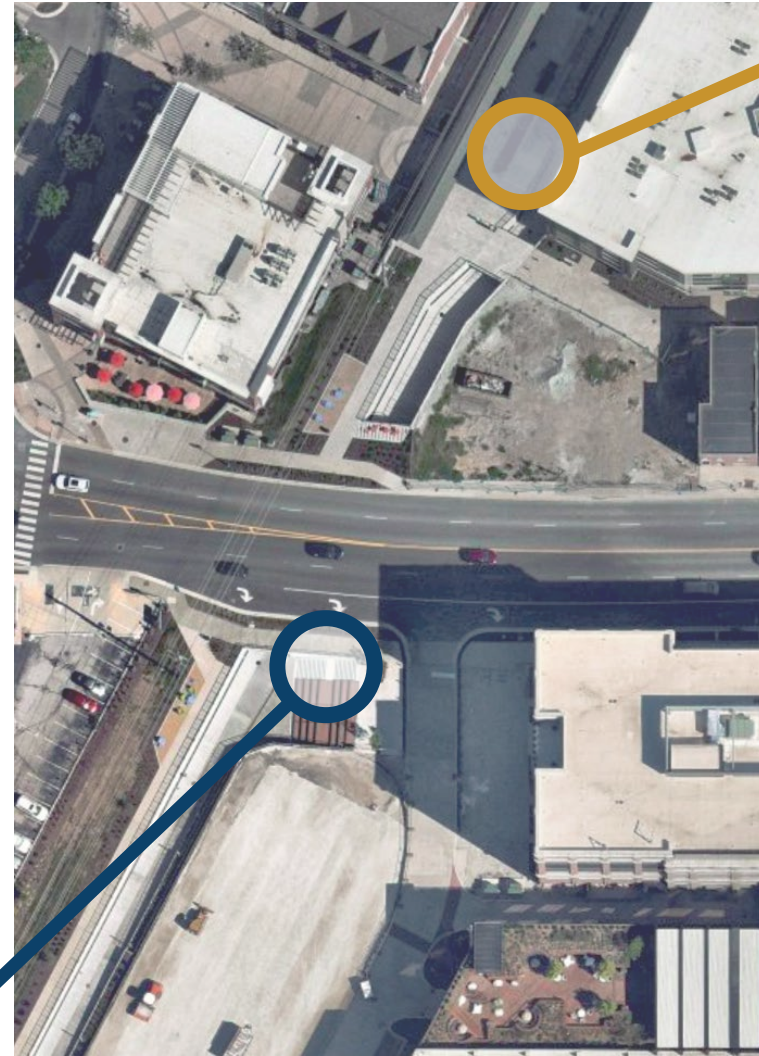
TERRACED PLANTING BEDS



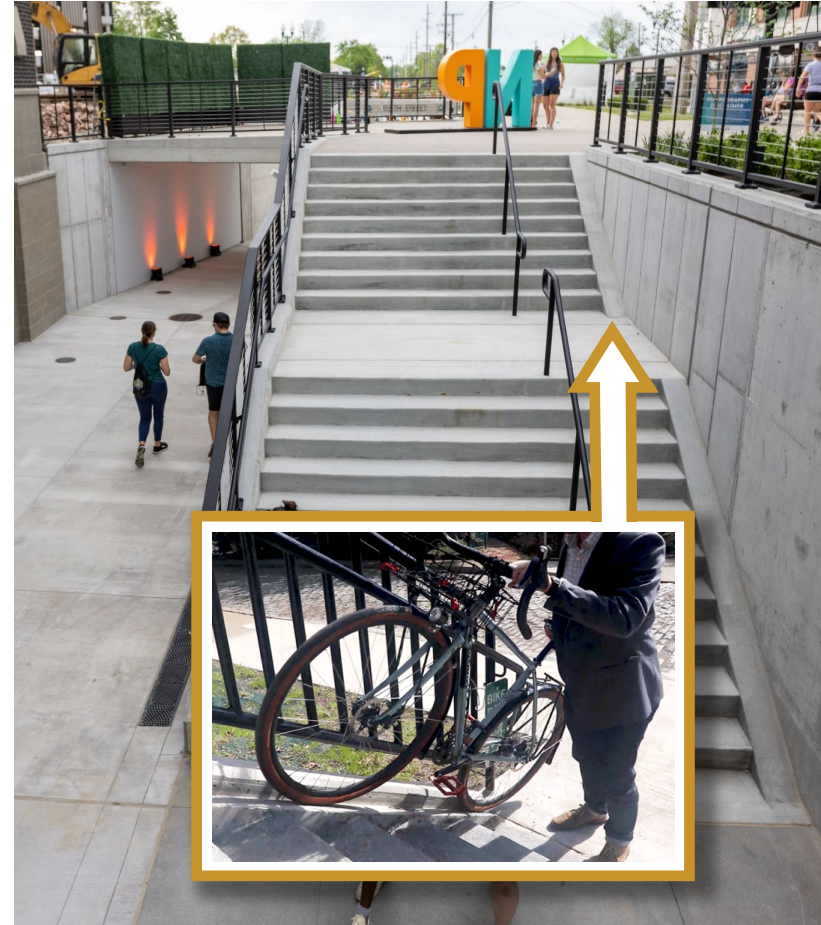
PUBLIC ACCESS



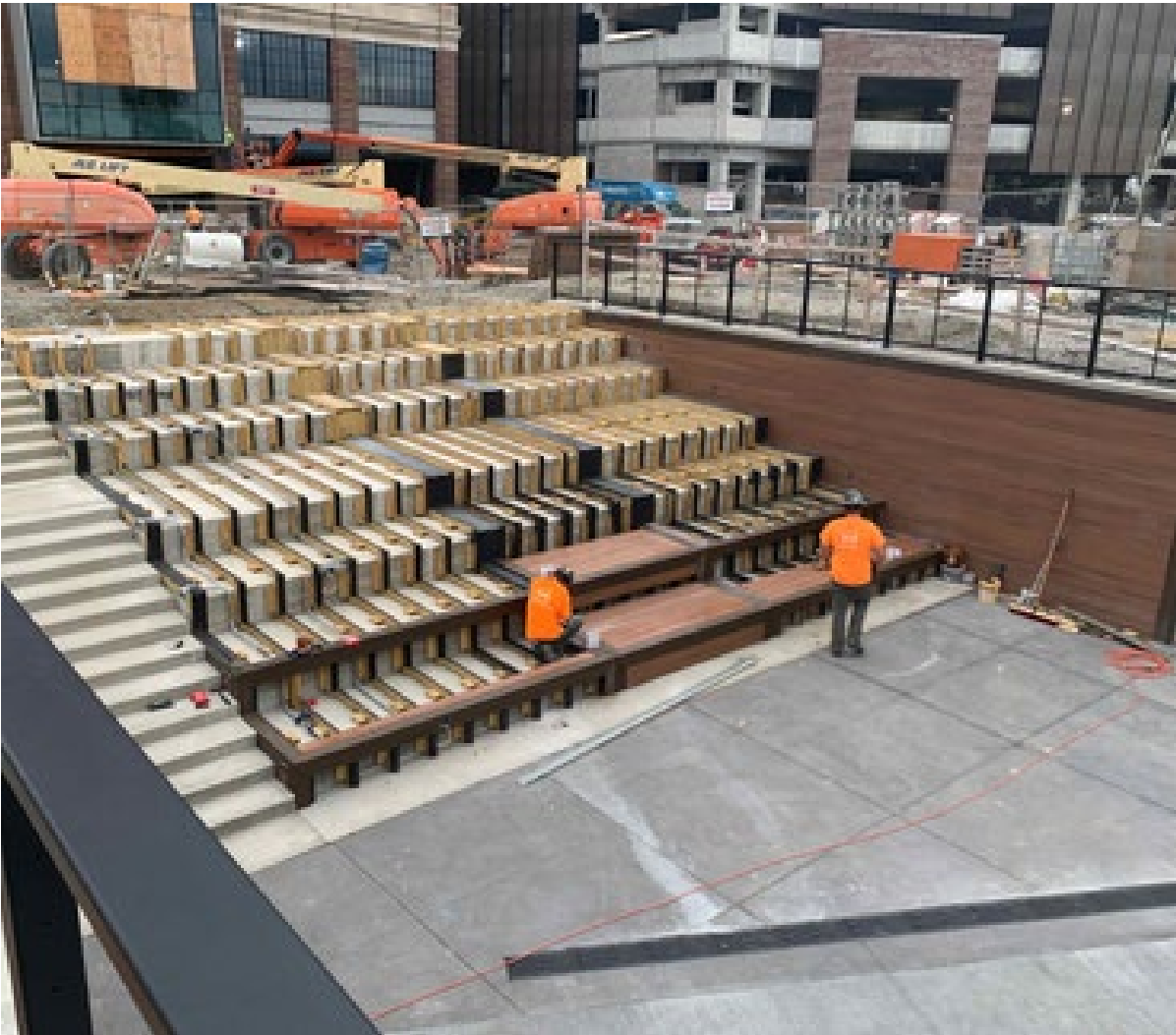
South Steps (Monumental Steps)



North Steps



MONUMENTAL STEPS



PUBLIC SAFETY

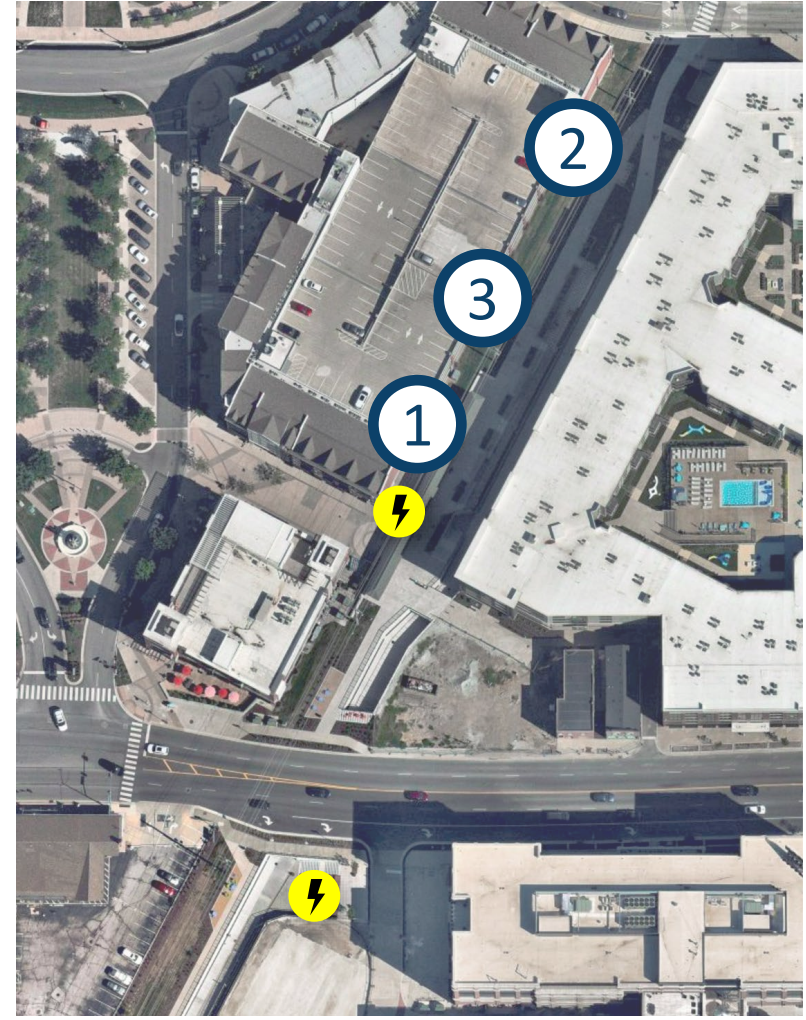


Camera Surveillance



Extensive Lighting Throughout

AMENITIES





QUESTIONS?