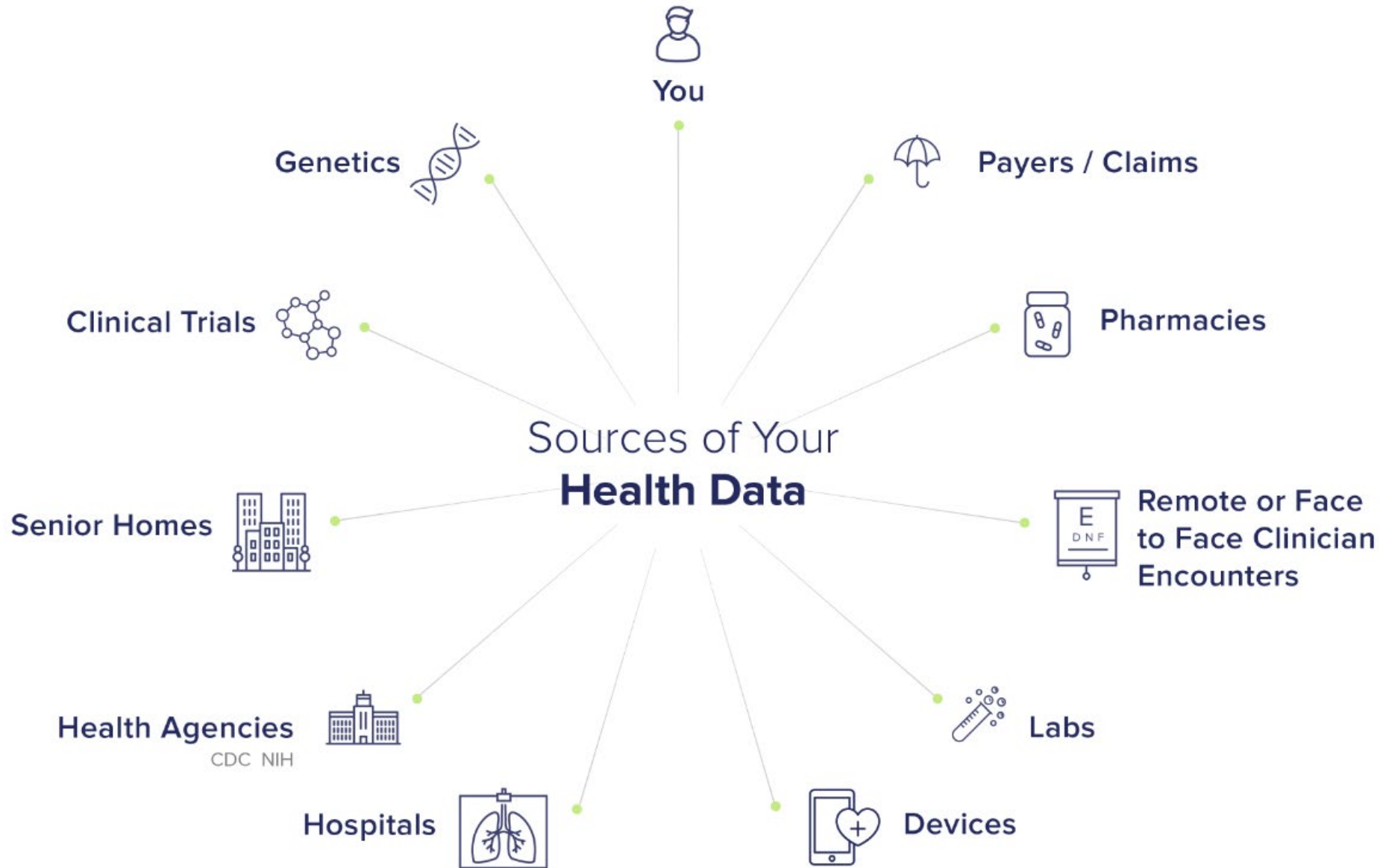


Healthcare Database and Research at Biostatistics Core Facility of John A. Burns School of Medicine

Hyeong Jun Ahn, Eunjung Lim, PhDs, Meliza Roman, MS.
Department of Quantitative Health Sciences
John A. Burns School of Medicine, UH Manoa

Healthcare data

- Healthcare data (Health data) is any data "**related to health conditions, reproductive outcomes, causes of death, and quality of life**" for an individual or population. Health data includes clinical metrics along with environmental, socioeconomic, and behavioral information pertinent to health and wellness.



Recommended Databases for Secondary Data Analysis

IPUMS ABOUT ▾ | PROJECTS ▾ | SUPPORT ▾ | IMPACT ▾ | BLOG

IPUMS provides census and survey data from around the world integrated across time and space. IPUMS integration and document conduct comparative research, merge information across data types, and analyze individuals within family and community context charge.

<p>U.S. Census and American Community Survey microdata from 1850 to the present. Learn More</p> <p>VISIT SITE</p>	<p>Current Population Survey microdata including basic monthly surveys and supplements from 1962 to the present. Learn More</p> <p>VISIT SITE</p>	<p>World's largest collection of census microdata covering over 100 countries, contemporary and historical. Learn More</p> <p>VISIT SITE</p>
<p>Health survey data for Africa and</p>	<p>Tabular U.S. Census data and GIS</p>	<p>Tabular and GIS data from</p>

Behavioral Risk Factor Surveillance System



The Behavioral Risk Factor Surveillance System (BRFSS) is the nation's premier system of health-related telephone surveys that collect state data about U.S. residents regarding their health-related risk behaviors, chronic health conditions, and use of preventive services. Established in 1984 with 15 states, BRFSS now collects data in all 50 states as well as the District of Columbia and three U.S. territories. BRFSS completes more than 400,000 adult interviews each year, making it the largest continuously conducted health survey system in the world. [See More.](#)

Save the Date: BRFSS Annual Meeting April 23-28, 2023
View more information about the BRFSS annual spring meeting 2023



National Center for Health Statistics

CDC > NCHS

National Health and Nutrition Examination Survey

- About NHANES +
- What's New +
- Webinar
- Questionnaires, Datasets, and Related Documentation +
- Survey Participants +
- Biospecimen Program +



National Health and Nutrition Examination Survey

Survey Participants



If you were selected, learn more about participating

Survey Data and Documentation



Access data, documentation & response rates

Publications and Products



View health and nutrition reports & CDC Growth Charts

Data Analysis Tutorials



Review step-by-step guidance on using NHANES data

[National Health Interview Survey](#)

[About NHIS](#)

[2019 Redesign](#) +

[What's New](#)

[Webinar](#)

[Questionnaires, Datasets, and Related Documentation](#) +

[Survey Reports and Data Linked to NHIS](#) +

[NHIS Early Release Program](#)



National Health Interview Survey

The National Health Interview Survey (NHIS) has monitored the health of the nation since 1957. NHIS data on a broad range of health topics are collected through personal household interviews. Survey results have been instrumental in providing data to track health status, health care access, and progress toward achieving national health objectives.

Survey Participants



Survey Data and Documentation



Publications and Products



Interactive Data Query System

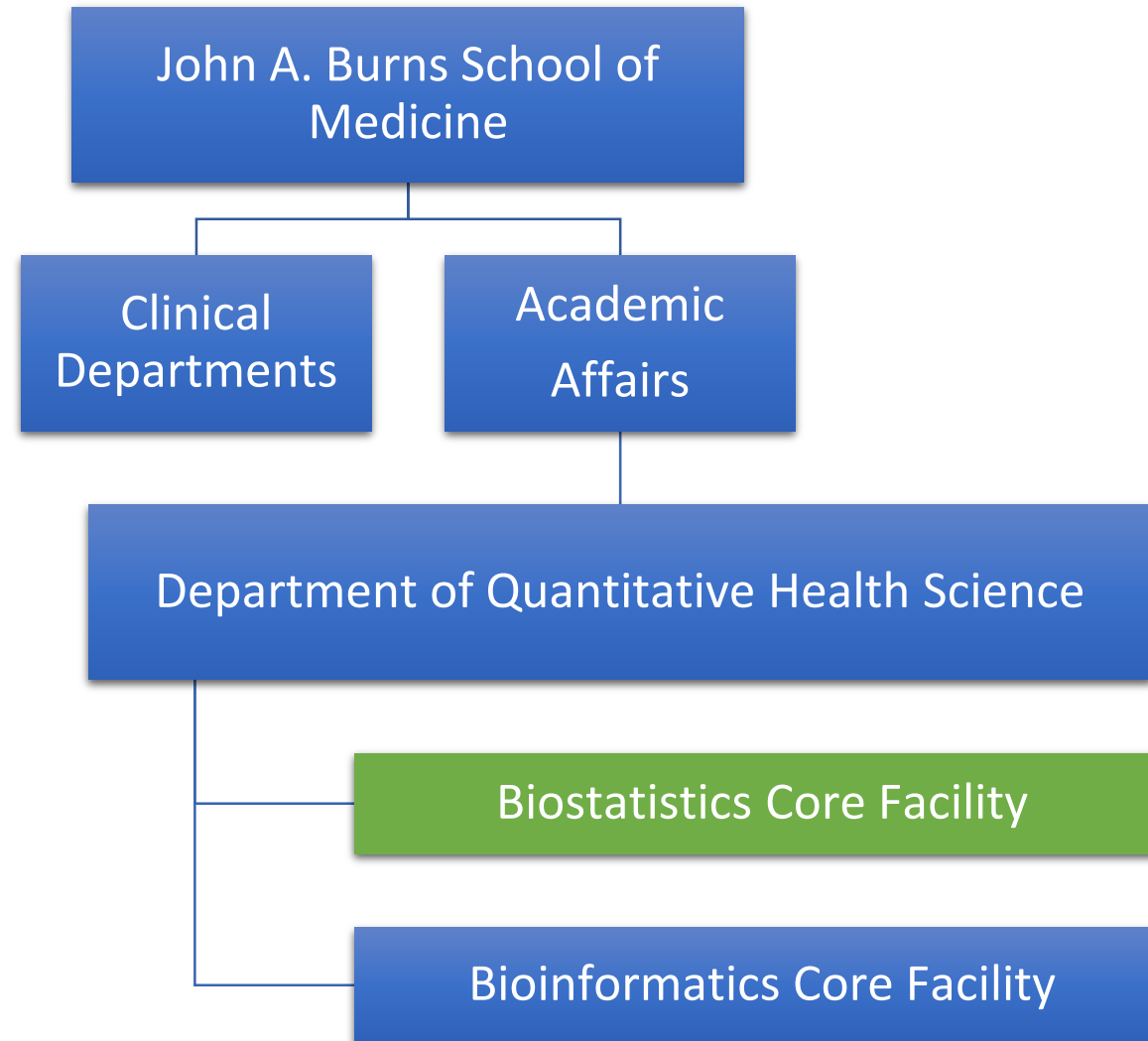


Publications (2016-2022)

- 24 Biostatistics Core Healthcare Data Analytic Papers
- 38 Collaborative Healthcare Data Analysis Papers

<https://qhs.jabsom.hawaii.edu/research/healthcare-databases/>

Who we are



What we do

- Services
- Methodological Research
- Education

Services

- Consultations
- Grant and protocol development in medical and health areas
- Database development
- Research design
- Various types of analysis

Services

- **Consultations**

- ✓ No charge for initial consultation (~ 1 hour)
- ✓ Initial consultation will be required for any project development
- ✓ Submit a request form: <https://qhs.jabsom.hawaii.edu/biostatistics-core/request-for-services/>

Services

- **Grant Proposal Development**

- ✓ Up to 20 hours of no-charge support toward extramural grant proposal development

- ✓ Salary support for biostatistics faculty/staff at 10% collaborative full-time equivalent (FTE) and above

Services

- **Database Development**

✓ REDCap project: <https://redcap.jabsom.hawaii.edu/redcap/>



Log In



REDCap Update. Please review the JABSOM REDCap End User Agreement revised Jun 2020:
<http://go.hawaii.edu/7YA>
New user account? Complete the new user request form: <http://go.hawaii.edu/q3A>
New project request? Complete the new project request form: <http://go.hawaii.edu/A3B>

Please log in with your user name and password. If you are having trouble logging in, please contact [REDCap Administrator](#).

Username:

Password:

Log In

[Forgot your password?](#)

Services

- **Statistical Analysis Project Support**

- 1) Collaborative full-time equivalent (FTE) approach

- 2) Project-based (fixed price) contract, or

- 3) Short-term hourly based fee-for-service agreement

Methodological Researches

- **Conducting collaborative and methodological research in a wide range of areas**

- **Selected publications:**

<https://qhs.jabsom.hawaii.edu/research/methodology/>

- **Hawai'i Single-Race Population Estimator**

Education

- **Graduate program**
 - ✓ Master of Science in Quantitative Health and Clinical Research (MSQHCR) (2 year program)
 - ✓ Graduate Certificate in Clinical Research (GCERT-CR) (2 semester program).

Education

✓ Master of Science in Quantitative Health and Clinical Research
(MSQHCR) (2 year program)

Two tracks : Clinical Research (CR) and Quantitative Health Sciences
(QHS)

Education

✓ Graduate Certificate in Clinical Research (GCERT-CR) (2 semester program).

Ideal for medical trainees, gap-year students, and health professionals.

Credits earned through the GCERT-CR can be transferred to the MSQHCR if students opt to pursue an MS degree.

Education

- **Core courses include**

- ✓ QHS 600 – Biostatistics Concepts for Clinical Researchers (3 credits)

- or QHS 601 – Fundamentals of Biostatistics (3 credits)

- ✓ BIOM 640 – Introduction to Clinical Research (3 credits)

- ✓ BIOM 660 – Mentored Capstone Research Practicum (2 credits)

Education

- ✓ BIOM 615 – Introduction to Clinical Nutrition (3 credits)
- ✓ BIOM 641 – Legal and Regulatory Issues and Bioethics (2 credits)
- ✓ BIOM 644 – Translational Research Methods (2 credits)
- ✓ BIOM 645 – Clinical Protocol Development (3 credits)
- ✓ BIOM 647 – Cultural Competence in Biomedical Research (3 credits)
- ✓ QHS 602 – Generalized Linear Models (3 credits)
- ✓ QHS 605 – Data Management and Visualization for Health Sciences (3 credits)
- ✓ QHS 610 – Bioinformatics I (3 credits), QHS 611 – Bioinformatics II (3 credits)
- ✓ QHS 620 – Introduction to Clinical Trials (2 credits), QHS 621 – Design and Analysis of Clinical Trials (2 credits)
- ✓ QHS 650 – Secondary Data Analysis (3 credits)
- ✓ QHS 670 – Special Topics – Machine Learning for Data Science (2 credits), Literature Review and Clinical Writing (3 credits), Special Topics in Quantitative Health Sciences (1-4 credits)



For more information, visit our website:

 <https://qhs.jabsom.hawaii.edu/>