

This is a repository copy of *Cr2AlN and the search for the highest temperature superconductor in the M2AX family*.

White Rose Research Online URL for this paper:

<https://eprints.whiterose.ac.uk/198758/>

Version: Published Version

Article:

Karaca, Ertugrul, Byrne, Peter John Phares, Hasnip, Philip James orcid.org/0000-0002-4314-4093 et al. (1 more author) (2023) Cr2AlN and the search for the highest temperature superconductor in the M2AX family. Scientific Reports. 6576. ISSN 2045-2322

<https://doi.org/10.1038/s41598-023-33517-0>

Reuse

This article is distributed under the terms of the Creative Commons Attribution (CC BY) licence. This licence allows you to distribute, remix, tweak, and build upon the work, even commercially, as long as you credit the authors for the original work. More information and the full terms of the licence here:

<https://creativecommons.org/licenses/>

Takedown

If you consider content in White Rose Research Online to be in breach of UK law, please notify us by emailing eprints@whiterose.ac.uk including the URL of the record and the reason for the withdrawal request.



OPEN

Cr₂AlN and the search for the highest temperature superconductor in the M₂AX family

E. Karaca^{1,2}, P. J. P. Byrne^{1✉}, P. J. Hasnip¹ & M. I. J. Probert¹

We have developed a high-throughput computational method to predict the superconducting transition temperature in stable hexagonal M₂AX phases, and applied it to all the known possible choices for M (M: Sc, Ti, V, Cr, Mn, Fe, Y, Zr, Nb, Mo, Lu, Hf and Ta). We combine this with the best candidates for A (A: Al, Cu, Ge and Sn) and X (X: C and N) from our previous work, and predict T_c for 60 M₂AX-phase materials, 53 of which have never been studied before. From all of these, we identify Cr₂AlN as the best candidate for the highest T_c, and confirm its high T_c with more detailed density functional theory electron-phonon coupling calculations. Our detailed calculations predict T_c = 14.8 K for Cr₂AlN, which is significantly higher than any T_c value known or predicted for any material in the M₂AX family to date.

The MAX phases are a fascinating family of materials, normally expressed as M_{n+1}AX_n, n = 1, 2, 3, etc., where M is an early transition metal, A is an element from groups 12–16, and X is usually B, C or N^{1–3}. They combine the metal-like properties of high electrical and thermal conductivity, machinability and mechanical strength^{4–11} with the ceramic-like properties of good mechanical properties at high temperature and very good corrosion and oxidation resistance, high hardness, high creep lifetime^{12–19}. These properties make them suitable for use as advanced materials in a variety of technologies and under extreme conditions. Jeitschko et al. reported on the manufacturing and characterization of Ti₂AlN¹ in 1963, from which the hexagonal M₂AX phase family developed. There are about 60 different M₂AX phases that have been synthesised²⁰, but only 10 of them have been experimentally proven to be superconductors: Mo₂GaC (with T_c = 4.0 K)²¹, Nb₂SC (5.0 K)²², Nb₂AsC (2.0 K)²³, Nb₂SnC (7.8 K)²⁴, Ti₂InC (3.1 K)²⁵, Nb₂InC (7.5 K)²⁶, Ti₂InN (7.3 K)²⁷, Ti₂GeC (9.5 K)²⁸, Lu₂SnC (5.2 K)²⁹ and Nb₂GeC (10.0 K)³⁰. Nb₂GeC has the highest experimental T_c = 10 K of any of these compounds currently known³⁰. In a recent paper on Ti-based M₂AX phases, we predicted Ti₂AlN would have T_c = 13.0 K, which was the highest superconductivity temperature of all the materials studied³.

The purpose of this study is to increase the maximum T_c in superconducting M₂AX phases by considering the effect of varying M. In our previous work, we first considered the effect of changing A in the Nb-based carbides, and created a high-throughput screening approach based upon the Fröhlich model, using Eliashberg calculations and experimental data for T_c of 4 phases which were already known to be superconducting. We examined 9 new choices for A and found A = Al yielded the highest T_c = 6.7 K² of these. In our next study of Ti-based materials, we used the same approach to study 42 phases, of which only 3 were already known to be superconducting, and predicted that A = Al and X = N would have the highest T_c = 13.0 K³.

In this paper, we study the effect of changing M. This significantly increases the number of possible phases, and is much more disruptive to the electronic and phononic structure of the material. Experimentally, the list of elements that can substitute for M in stable M₂AX phases is currently known to be Sc, Ti, V, Cr, Mn, Fe, Y, Zr, Nb, Mo, Lu, Hf and Ta.

Of the 10 different M₂AX phases that are known to be superconducting, the effect of changing M for fixed A and X can be seen by considering Ti₂GeC vs Nb₂GeC, and for Nb₂SnC vs Lu₂SnC. Hence we first studied these four materials using detailed Eliashberg calculations and compared to known experimental T_c values. We then extended this with detailed Eliashberg calculations to include additional phases M₂AC (M: Nb, Ti, Mo and Lu; A: Ge and Sn), 3 of which we have already presented in previous works^{2,3}, and the 5 new sets of data are presented in the Supplementary Information. This was then used to generate a high-throughput screening model for M₂AC (A: Ge and Sn). We then used this model on the full set of 13 M elements (with both A: Ge and Sn) and found that M = Cr was predicted to have the highest T_c both times. Combining the insights from our previous studies^{2,3} on the effect of changing A and X for fixed M, this suggested that Cr₂AlN should be the best combination. To

¹Department of Physics, University of York, York YO10 5DD, UK. ²Sakarya University, Biomedical, Magnetic and Semiconductor Materials Research Center (BIMAS-RC), 54187 Sakarya, Turkey. ✉email: peter.byrne@york.ac.uk

be robust we used this initial screening to identify the 5 best values of M (M: Ti, Cr, Fe, Nb and Mo) for further study in case the ranking changed as we varied A and X.

Sun et al.³¹ investigated the structural and electronic properties of Cr₂AlN using ab initio calculations in 2005. The structural, electronic, and elastic properties of Cr₂AlN have been analyzed by using density functional theory with the generalized gradient approximation (GGA)^{32–34}. However, no ab initio works for the phonon properties of Cr₂AlN have been discovered, even though many physical properties, such as electrical and thermal resistivity, thermal expansion, and superconductivity, are determined by phonons and their interactions with electrons. To estimate electron–phonon matrix elements for Cr₂AlN, we combined the linear response approach^{35,36} and the Migdal–Eliashberg approach^{37,38} to calculate the Eliashberg spectral function of Cr₂AlN using the phonon density of states and electron–phonon matrix elements. Integrating the Eliashberg spectral function produced the average electron–phonon coupling parameter and logarithmic average phonon frequency for Cr₂AlN. These physical characteristics are used to calculate the superconducting transition temperature using the Allen–Dynes modified McMillan formula^{39–41}. In our previous studies^{2,3} on superconductivity in some M₂AX phases using the same techniques, we observed that the Migdal–Eliashberg predictions agreed with experimental *T_c* values to within ± 1 K.

Methods

The quantum mechanical calculations were performed using the Quantum–Espresso ab initio simulation package^{35,36,42} in which the plane-wave pseudopotential method is applied. The electron-ion interactions are modeled using ultrasoft pseudopotentials⁴³. The Perdew–Burke–Ernzerhof (PBE) scheme is used to approximate the exchange–correlation functional⁴⁴. The plane-wave basis cut-off for all calculations is set to 60 Ry (~ 812 eV) and the Brillouin zone integration used the Monkhorst–Pack⁴⁵ scheme with (36 × 36 × 8) **k**-mesh (maximum spacing of 0.01 × 2π Å⁻¹), whereas the electronic and Fermi surface calculations utilise a denser (40 × 40 × 10) **k**-mesh. We also allowed for the emergence of magnetic properties in the Fe-based materials, but no evidence for spin polarisation was found.

The Brillouin zone integration for phonons used a (4 × 4 × 4) **q**-mesh and twelve dynamical matrices by symmetry for phonon calculations. From this, the electron–phonon interaction can be calculated and hence *T_c*.

The electron–phonon interaction has been investigated with the linear response theory^{35,36} approach to the Migdal–Eliashberg theory^{37,38}. The scattering of an electron in state |**k***n*) to state |**k** + **q***m*) due to the phonon mode ω_{**qj**} perturbation is given by the electron–phonon matrix elements $g_{(\mathbf{k}+\mathbf{q})m;kn}^{\mathbf{qj}}$ which have been estimated self-consistently by the linear response theory^{35,36}.

The electron–phonon matrix element *g* is given as^{46–50}

$$g_{(\mathbf{k}+\mathbf{q})m;kn}^{\mathbf{qj}} = \sqrt{\frac{\hbar}{2\omega_{\mathbf{qj}}}} \langle \mathbf{k} + \mathbf{q}, m | \Delta V_{\mathbf{qj}}^{SCF} | \mathbf{k}, n \rangle, \quad (1)$$

where |**k**, *n*) is the Bloch electron eigenstate with wavevector **k** and band index *n*; Δ*V_{qj}^{SCF}* is the derivative of the self-consistent effective potential with respect to the atomic displacements caused by a phonon of frequency ω_{**qj**} with wave vector **q** and branch index *j*.

From these matrix elements, the phonon linewidth can be calculated by averaging the electron–phonon interaction over the Fermi surface:

$$\gamma_{\mathbf{qj}} = 2\pi\omega_{\mathbf{qj}} \sum_{knm} |g_{(\mathbf{k}+\mathbf{q})m;kn}^{\mathbf{qj}}|^2 \delta(\varepsilon_{kn} - \varepsilon_F) \delta(\varepsilon_{(\mathbf{k}+\mathbf{q})m} - \varepsilon_F). \quad (2)$$

The Dirac delta functions restrict the initial and final states to the Fermi surface as the phonon energy is small in comparison.

The **q**-dependent electron–phonon coupling parameter is given by

$$\lambda_{\mathbf{qj}} = \frac{\gamma_{\mathbf{qj}}}{\pi \hbar N(\varepsilon_F) \omega_{\mathbf{qj}}^2}. \quad (3)$$

This can be used to measure the contribution of each phonon branch to the total electron–phonon coupling.

An alternative route to the average electron–phonon coupling parameter λ is via the Eliashberg spectral function α²*F*(ω). This can be defined in terms of the phonon linewidth γ_{**qj**} as

$$\alpha^2 F(\omega) = \frac{1}{2\pi N(\varepsilon_F)} \sum_{\mathbf{qj}} \frac{\gamma_{\mathbf{qj}}}{\hbar\omega_{\mathbf{qj}}} \delta(\omega - \omega_{\mathbf{qj}}), \quad (4)$$

and then the average electron–phonon coupling parameter λ and the logarithmically averaged phonon frequency ω_{*ln*} can be derived from the integration of the Eliashberg spectral function:

$$\lambda = 2 \int \frac{\alpha^2 F(\omega)}{\omega} d\omega. \quad (5)$$

$$\omega_{ln} = \exp \left(2\lambda^{-1} \int_0^\infty \frac{d\omega}{\omega} \alpha^2 F(\omega) \ln \omega \right). \quad (6)$$

The Allen–Dynes modified McMillan equation can then be used to determine the superconducting critical temperature T_c ^{40,41},

$$T_c = \frac{\omega_{\text{in}}}{1.2} \exp\left(-\frac{1.04(1 + \lambda)}{\lambda - \mu^*(1 + 0.62\lambda)}\right), \quad (7)$$

where μ^* represents the effective screened Coulomb repulsion parameter. In most studies, the value of the value of μ^* varies between 0.10 and 0.16^{40,41}.

The calculation of T_c is very computationally intensive, as the electron–phonon coupling requires a finely sampled Fermi surface, which leads to a large number of matrix elements that need to be calculated, making it unsuitable for high-throughput screening of potential superconductors. In a previous paper² on Nb-based M_2AX phases we showed that changing A in M_2AC was comparable to the superconducting isotope effect, and that a simple model based on the Fröhlich⁵¹ theory of the isotope effect provided an effective basis for a high-throughput screening technique of these materials, with

$$T_c = \alpha \frac{N(E_F)}{\sqrt{M}} - T_0, \quad (8)$$

where M is the mass of a formula unit, $N(E_F)$ is the electronic density of states at the Fermi energy E_F , and T_0 and α are linear fit parameters. For superconductivity to occur, the critical value for this model is $N(E_F)/\sqrt{M} > T_0/\alpha$. This functional form is an approximation to the simplified BCS equation⁵².

In a subsequent paper³ on Ti-based M_2AX phases we showed that the same approach was successful when both A and X were varied, and that 3 distinct trends were clear for X = C, N and B.

The advantage of Eq. 8 is that $N(E_F)$ can be calculated in around 1 h using 40 cores of a modern super-computer, whereas the electron–phonon matrix element calculation typically takes over 200 h with the same computing resource per material. When combined with the observed trend in T_c vs. $N(E_F)/\sqrt{M}$, it can be used in a high-throughput search to predict the superconducting transition temperatures of candidate materials.

In this work, we consider the effect of changing M. This is expected to be much more disruptive to electron–phonon coupling, as our earlier studies have shown that $N(E_F)$ is dominated by electronic contributions from M, and the most important part of the electron–phonon coupling parameter (λ) comes from low frequency phonons, which are also dominated by M.

Results

Superconducting T_c results. The first part of this study was to establish the optimal value of μ^* by calculating T_c values using the Eliashberg theory for the 4 M_2AC phases (M: Ti and Nb; A = Ge) and (M = Nb and Lu; A = Sn) for which the experimental values of T_c are known. We consider the usual range of $0.10 \leq \mu^* \leq 0.16$ and compare to known experimental data in Fig. 1. The best μ^* value depends on M as expected, but overall, $\mu^* = 0.13$ is most reliable with a worst case error in T_c of ± 1.5 K, and for most materials, the error is significantly better than that. We also note that fixing μ^* may lead to small errors in the rank ordering of T_c with varying M, but that the general trends of higher or lower T_c are reliable. Fixing $\mu^* = 0.13$ is also consistent with our previous work³.

The next step was to establish the high-throughput screening model, by expanding the range of phases (M: Ti, Nb, Mo and Lu; A: Ge and Sn) studied using the Eliashberg theory. This confirmed the linear relation between T_c and $N(E_F)/\sqrt{M}$ and by fitting to Eq. 8, values for α and T_0 were determined. This showed that the Fröhlich model was valid in this work. The T_c results are given in Table 1 and shown in Fig. 2, where blue and red squares show

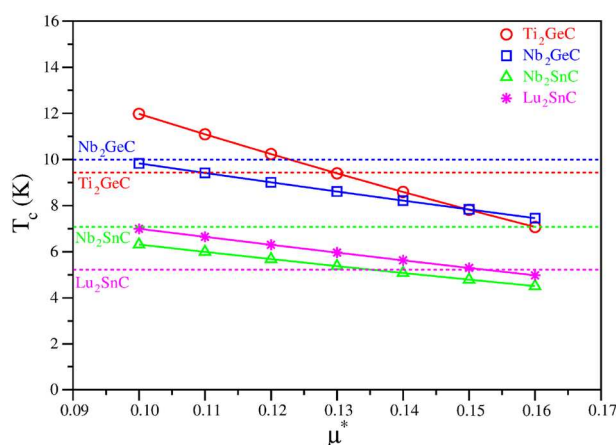


Figure 1. Calculated T_c for seven different values of Coulomb repulsion constant (μ^*). The experimental values of Ti_2GeC , Nb_2GeC , Nb_2SnC and Lu_2SnC are shown as horizontal red, blue, green and magenta dashed lines, respectively.

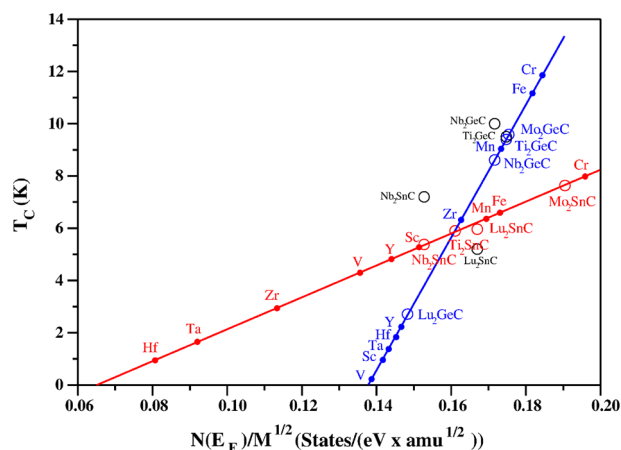


Figure 2. T_c for M_2AC (M: Sc, Ti, V, Cr, Mn, Fe, Y, Zr, Nb, Mo, Lu, Hf and Ta; A: Ge and Sn). The results for T_c calculated using $\mu^* = 0.13$ using Migdal-Eliashberg theory are presented as blue (A = Ge) and red (A = Sn) open circles, and the corresponding experimental data are displayed as black circles, with linear best fit to the theoretical values in blue and red lines. Red and blue filled circles represent a simple Fröhlich model for estimating superconducting transition temperature T_c . Full data in Tables 1 and 2.

that A = Ge and A = Sn naturally separate into two separate classes, as shown by two straight lines. In addition, the available experimental T_c values are shown in black circles. Detailed Eliashberg results for the phases not studied in our earlier works are presented in the Supplementary Information.

Having established our high-throughput model, we can now predict T_c in new M_2AX phases from just $N(E_F)$ and the mass. The model predictions of T_c for M_2AC (where M: Sc, Ti, V, Cr, Mn, Fe, Y, Zr, Nb, Mo, Lu, Hf, and Ta; A: Ge and Sn) are given in Table 2 and included in Fig. 2. Of these materials, 18 have no previously reported T_c studies. Our predictions suggest that Cr-based phases have the highest T_c for both families for M_2AC (A: Ge and Sn).

As a general trend, across the 4 families of M_2AX phases previously studied, (Nb_2AC , Ti_2AB , Ti_2AC and Ti_2AN) the best T_c results were found with A = Al, Cu, Ge or Sn and X = C or N. In addition to M = Cr, there are 4 other choices (M: Ti, Fe, Nb and Mo) that have consistently high T_c and should also be considered in case of a change in ranking when varying A and X, and effect of fixed μ^* . We therefore extended the range of phases considered and calculated $N(E_F)$ for 40 phases to predict the T_c of M_2AX (M: Ti, Cr, Fe, Nb and Mo; A = Al, Cu, Ge and Sn; X = C and N) of which 23 have not been reported before in this work or elsewhere. The results are given in Table 3 and shown in Fig. 3.

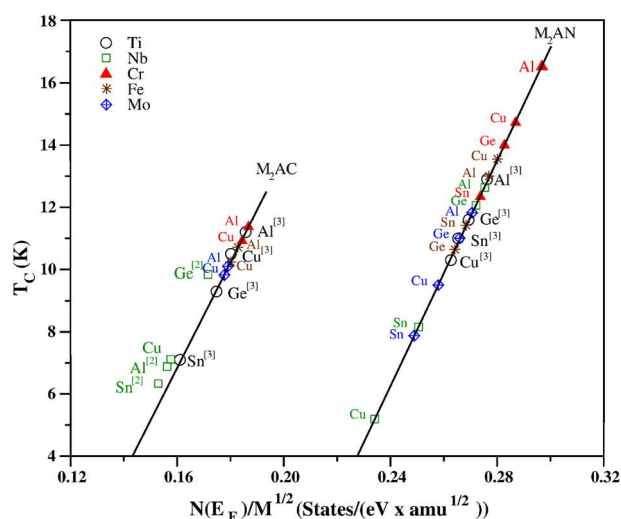


Figure 3. T_c for M_2AX (M: Ti, Cr, Fe, Nb and Mo; A: Al, Cu, Ge and Sn; X: C and N). New data in this paper for M = Ti, Nb, Cr, Fe, and Mo are shown as black circles, green squares, red filled triangles, brown stars and blue diamonds, respectively. Data from our recent studies^{2,3} on Nb_2AC and Ti_2AX are shown in brackets. Full data in Table 3.

Phase	T_c (exp)	T_c (Fröhlich)	T_c (full ME theory)
Ti ₂ GeC	9.5 ²⁸	9.3 ³	9.4 ³
Nb ₂ GeC	10.0 ³⁰	8.5	8.6*
Mo ₂ GeC		9.6	9.6
Lu ₂ GeC		2.5	2.7
Ti ₂ SnC		7.1 ³	5.9
Nb ₂ SnC	7.2 ⁵³	5.3	5.4*
Mo ₂ SnC		7.6	7.6
Lu ₂ SnC	5.2 ²⁹	6.2	5.9

Table 1. Superconducting temperature values (T_c in K) for M_2AC (M:Ti, Nb, Mo and Lu, A: Ge and Sn) in experiment, predicted using the Fröhlich model and calculated by Migdal–Eliashberg (ME) theory (with $\mu^* = 0.13$). *This value was calculated with $\mu^* = 0.13$ whilst the corresponding value in ref.² had $\mu^* = 0.10$.

The results in Fig. 3 show that for most M the data naturally fall into two classes (for X = C and X = N), and that our previously published Nb and Ti results are consistent with these new data, which reinforces the validity of the high-throughput model. The one exception seems to be the M_2SnX phases, which was also evident in the different ‘best fit’ value of μ^* suggested by Fig. 1 and by the difference between experimental and model T_c in Fig. 2. This may be due to different electronic hybridization with Sn but has not been investigated in detail. We also note that the T_c value for Ti₂SnC reported in Table 1 has been calculated using Eliashberg theory, whereas in our previous paper³ it was predicted to be 7.1 K using the Fröhlich model. This is the largest difference that we could find between the model and Eliashberg theory. Hence, we are confident that the overall predictions of trends and T_c are trustworthy. These results show that M = Cr has the highest T_c as vary A and X, and that Cr₂AlN has the highest predicted $T_c = 16.5$ K of any M_2AX phase studied so far.

Having identified Cr₂AlN as the most promising superconducting M_2AX phase, we now focus on a detailed study on its properties.

Structural, electronic and Fermi surface properties of Cr₂AlN. To the best of our knowledge, Cr₂AlN has not yet been experimentally studied although there have been a few theoretical studies of its structural properties. Figure 4 shows the hexagonal unit cell for Cr₂AlN with space group P6₃/mmc. This is constituted of blocks of edge-sharing Cr₆N octahedra sandwiched by planes of Al. The primitive unit cell of Cr₂AlN include two formula units (eight atoms): four Cr atoms located at 4f (1/3, 2/3, z), two Al atoms at 2d (1/3, 2/3, 3/4), and two N atoms at (0, 0, 0). Thus, for Cr₂AlN, the structural information is completely determined by two lattice parameters (a and c) and one internal structural parameter (z). The optimised lattice constants (a , c), internal parameter (z), the closest Cr–Cr (d_{Cr-Cr}), Cr–Al (d_{Cr-Al}), Cr–N (d_{Cr-N}) and obtained the bulk modulus (B) and its pressure derivative (B') of Cr₂AlN are shown Table 4. The computed values of a and c in Table 4 are remarkably close to the other theoretical values^{32,33,54}. Table 4 also contains data for relaxed bond lengths of Cr₂AlN, where d_{Cr-Cr} , d_{Cr-Al} and d_{Cr-N} represent the bond length between appropriate pairs of atoms. The Cr–Cr distance is longer than in elemental Cr (2.498 Å). The Cr–N bond-length of 1.942 Å, is almost equal to the sum of the covalent radii of Cr (1.22 Å) and N (0.70 Å), and is shorter than the Cr–Al distance suggesting that the Cr–N bond is stronger than the Cr–Al bond. We also performed various spin-polarized calculations and found that the relaxed ground state had negligible magnetization in each case, which agrees with a previous theoretical result³¹. Hence we proceed with assuming a non-magnetic ground state for Cr₂AlN.

Figure 5 shows the electronic characteristics of hexagonal Cr₂AlN, including (a) band structure in the Brillouin zone, (b) total and partial density of states (DOS and PDOS), and (c) the Fermi surface. Four dispersive bands cross at E_F , indicating that the electronic structure of this compound is multi-band and has metallic properties. The density of states at the Fermi level ($N(E_F)$) is crucial for determining metallic phases and superconductivity. Hence, the total and partial density of states for Cr₂AlN are shown in Fig. 5b. For Cr₂AlN, the lowest energy region, $-17.9 < E < -16.2$ eV, is dominated mainly by the N 2s states with small contributions from Cr 4s and 3d states. The valence band is mainly composed of $-10.0 < E < -5.5$ eV states that come from Cr 3d and N 2p. In this valence region, Cr and N atoms exhibit hybridization, indicating the possibility of a covalent bond between these elements. The main region of the valence band, which extends between $-3.8 < E < -1.8$ eV, is formed of hybridised states of Cr 3d and Al 3p, which indicates the existence of covalent Cr–Al bonding. The Cr–N bonds represent a lower energy range than the Cr–Al bonds, indicating that the Cr–N bonds have a higher binding energy and are stronger than the Cr–Al bonds, which is comparable to the findings obtained when analyzing bond distance. The DOS of Cr₂AlN has peaks with a lower energy than the other M_2AX phases we have calculated^{2,3} and it is known that hybridized states with lower energy lead to stronger bonding among M_2AX phases^{55,56}. Thus, the DOS peaks of Cr₂AlN may suggest that the bonding between atomic states in this compound is stronger than in the other M_2AX phases which could help explain the high T_c .

The value of $N(E_F)$ is proportional to the electron–phonon coupling parameter (λ) according to the McMillan–Hopfield expression⁴⁰:

$$\lambda = \frac{N(E_F)\langle I^2 \rangle}{M\langle \omega^2 \rangle}, \quad (9)$$

where $\langle \omega^2 \rangle$ denotes the average squared phonon frequency, $\langle I^2 \rangle$ describes the average squared electron–phonon matrix element and M is the average atomic mass. As Cooper pairs of electrons having energies close to the Fermi level, the electronic density of states at the Fermi energy plays a crucial role in superconductivity, and we find $N(E_F) = 5.06$ states/eV for Cr_2AlN , which is a high value when compared to similar structures^{2,3}. Figure 5b shows that the peak at the Fermi level is dominated by Cr 3d orbitals, indicating that the 3d electrons dominate the conduction properties. The contributions of Cr, Al, and N atoms to DOS are 89%, 6%, and 5%, respectively. As a result, the electronic states from Cr are responsible for the conducting and superconducting properties of Cr_2AlN , and as this has the highest value of $N(E_F)/\sqrt{M}$ among the M_2AX phases studied, it should (if all other effects are similar), have the highest T_c value.

Figure 5c shows a plot of the Cr_2AlN Fermi surface, which is quite complex. The electrical conductivity of Cr_2AlN is formed mainly by the Cr 3d-like bands on the Fermi surface, which contains six different sheets. Hole-like sheets appear in the corners of the Brillouin zone along the H - K and L - M directions, while the Fermi surface is completely prismatic and cylindrical in the Γ - A direction and shows electron-like behaviour. The first sheet of Cr_2AlN is cylindrical whilst other sheets interact with each other. The Fermi surface of Cr_2AlN is similar to the other M_2AX phase Fermi surfaces in our previous papers^{2,3}.

Elastic and mechanical properties of Cr_2AlN . The elastic properties of solids are a link between mechanical and vibrational properties. In the phonon-mediated version of the BCS theory, phonons couple electrons to form Cooper pairs which are the foundation of superconductivity. In this study, elastic constant calculations have been done using the strain–stress method as performed in the thermo_pw package⁵⁷: a set of small strains is applied to the crystal lattice and then the lattice containing the atoms are totally relaxed to obtain the corresponding stress. The symmetry of the hexagonal lattice results in five independent elastic constants: C_{11} , C_{12} , C_{13} , C_{33} and C_{44} , which are given in Table 5. As shown in Table 5, C_{33} greater than C_{11} , indicating that Cr_2AlN is more incompressible along the z -axis than along the x -axis. In other words, the bonding strength along the z -axis is significantly greater than along the x -axis. The mechanical stability criteria determined by the Born Huang lattice dynamics theory^{58,59} can be given as: $C_{11} > |C_{12}|$; $(C_{11} + 2C_{12})C_{33} - 2C_{13}^2 > 0$ and $C_{44} > 0$. It is clear from Table 5 that Cr_2AlN elastic constants meet the mechanical stability criteria.

Using the well-known Voigt–Reuss–Hill (VRH)^{60–62} approximations, it is possible to calculate the isotropic bulk modulus (B_{VRH}), the isotropic shear modulus (G_{VRH}), Young’s modulus (E), and Poisson’s ratio (σ) from the elastic constants. The general Voigt–Reuss–Hill formulas for hexagonal crystals are given by the following equations:

$$B_V = \frac{2}{9}(C_{11} + C_{12} + 2C_{13} + C_{33}/2), \quad (10)$$

$$G_V = \frac{1}{15}(2C_{11} + C_{33} - C_{12} - 2C_{13}) + \frac{1}{5}(2C_{44} + C_{66}), \quad (11)$$

$$B_R = \frac{1}{(2S_{11} + S_{33}) + 2(S_{12} + 2S_{13})}, \quad (12)$$

$$G_R = \frac{15}{4(2S_{11} + S_{33}) - 4(S_{12} + 2S_{13}) + 3(2S_{44} + S_{66})} \quad (13)$$

$$B_H = \frac{B_V + B_R}{2}, \quad (14)$$

$$G_H = \frac{G_V + G_R}{2}, \quad (15)$$

$$E = \frac{9B_H G_H}{(3B_H + G_H)}, \quad (16)$$

$$\sigma = \frac{3B_H - 2G_H}{2(3B_H + G_H)}, \quad (17)$$

where S_{ij} is the elastic compliance constants. The calculated values of bulk modulus (B_V , B_R and B_H), shear modulus (G_V , G_R and G_H), Young’s modulus (E), the ratio of bulk to shear modulus (B_H/G_H) and Poisson’s ratio (σ) are shown in Table 6. The calculated values agree with other theoretical values^{32–34} and the values of B_H are close to B determined by total energy calculations in Table 4.

The ratio of bulk modulus to shear modulus (B_H/G_H) can be used with the empirical formula of Pugh⁶³ to indicate that a material is ductile (brittle) if B_H/G_H is greater (smaller) than 1.75. The calculated value of B_H/G_H for Cr_2AlN is 2.077 which suggests Cr_2AlN should be ductile, which is favorable for its technological applications. Moreover, the Poisson’s ratio of Cr_2AlN is $\nu = 0.293$. This is greater than the ductile critical value⁶⁴ of

0.26. It is known that $\nu \approx 0.1$ in covalent and $\nu \approx 0.33$ in metallic materials⁶⁴ and so as Cr₂AlN has $\nu = 0.293$, it should have metallic behavior.

Phonons and electron–phonon interaction of Cr₂AlN. Phonon dispersion, total and partial vibrational density of states (VDOS) and electron–phonon spectral function for Cr₂AlN have been analyzed in detail because they play a crucial role in superconductivity. As the primitive unit cell of Cr₂AlN consists of eight atoms, there are 24 phonon modes, including 3 acoustic modes and 21 optical modes. Our previous paper on Nb-based materials has analysed the zone-centre optical phonon modes in hexagonal M₂AX phases in detail². The zone-centre optical phonon modes of Cr₂AlN can be classified by the irreducible representations of the point group D_{6h}(6/mmm). The electron–phonon coupling parameter of the A_{1g} phonon mode is significantly larger than the corresponding values for the other phonon modes at Γ point. Figure 6 shows the calculated phonon dispersion relations (a), total and partial vibrational density of states (VDOS) (b), and electron–phonon spectral function for Cr₂AlN (c). Cr₂AlN is dynamically stable as there are no negative frequencies. Generally, the phonon properties of Cr₂AlN are very similar to the MAX phases in our previous studies^{2,3}. The Cr₂AlN phonon spectrum can be separated into three apparent regions by two phonon band gaps of width 2.5 and 0.4 THz. The differences in the masses of the three atomic species cause these separations. The first phonon region, between 0 and 11.4 THz, contains three acoustic phonon modes and fifteen optical phonon modes. In order to define the nature of all phonon branches in the phonon dispersion diagram of Cr₂AlN, we present its total and partial phonon density of states in Fig. 6b. There is significant overlap and hybridization of Cr–Al modes in the low frequency region for Cr₂AlN (see Fig. 6b). The phonon modes up to 8 THz are dominated by Cr atoms due to their heavier mass. The Cr and Al atoms vibrate and hybridize more strongly between 8 THz and 11.4 THz. There is no N atom contribution in this region. In the other two regions, the VDOS is dominated by the motions of the low mass N atoms, with negligible contribution from Cr.

One of the main aims of this study is to identify the electron orbitals and phonon modes that are most effective in developing superconductivity. For this reason, the Eliashberg spectral function ($\alpha^2F(\omega)$) and the frequency variation of the average electron–phonon coupling parameter λ for Cr₂AlN are presented in Fig. 6c. In our previous publications, we analysed the Eliashberg spectral function in detail^{2,3}. Here, we find for Cr₂AlN that $\lambda = 0.861$, and it increases strongly with frequency between 4 THz and 8 THz. An analysis of the Eliashberg spectral function reveals that the phonon modes with low frequency (the first phonon region, below 11.4 THz) contribute 85% to the total ($\lambda = 0.734$), with modes dominated by the coupled motion of Cr and Al ions. This large contribution shows that these phonon modes couple strongly with electrons at the Fermi level. This strong coupling is to be expected as the corresponding phonon modes are dominated by Cr atoms, which dominate the electronic states close to the Fermi level. As the high-frequency region is dominated by light N atom modes, its contribution to λ is minor. Among all the M₂AX phases we have studied, Cr₂AlN has the highest λ value and hence might be expected to have the highest T_c .

The electron–phonon coupling parameter of the 3 acoustic modes and 2 optical modes along the high symmetry lines in the Brillouin zone are given Fig. 6d using Eq. 3. The electron–phonon coupling value near the Γ point is particularly strong for the longitudinal acoustic mode along the Γ -K, M- Γ , and L- Γ directions. Figure 5c shows that along these directions, there are a number of near-parallel sheets of the Fermi surface. These sheets can be coupled by a similar \mathbf{q} -vector, an effect known as Fermi surface nesting. The large region of the Fermi surface coupled in this way will result in a strong electron–phonon interaction. Fermi nesting could be important in improving electron–phonon interactions^{65,66} and thus increasing superconductivity.

Using the value of λ , we calculate the logarithmic average phonon frequency for Cr₂AlN to be $\omega_{ln}=331.225$ K. These values are used to calculate T_c by using the Allen–Dynes modification of the McMillan equation as in Eq. 7. The value of μ^* in most studies ranges from 0.10 to 0.16^{40,41}. Here, as discussed above, we use $\mu^*=0.13$ as it gave the best overall fit to the experimental T_c as can be seen in Fig. 1. As there are no known experimental T_c values for Cr₂AlN, we again use $\mu^*=0.13$ to calculate $T_c=14.814$ K using the Eliashberg theory. Whilst this is a little lower than the value predicted by our Fröhlich model (developed on the basis of $\mu^*=0.13$), it is considerably higher than the highest T_c value for any material in the M₂AX family studied to date.

Conclusion

We have used a high-throughput method to examine the superconducting properties of 53 new M₂AX phases (from M: Sc, Ti, V, Cr, Mn, Fe, Y, Zr, Nb, Mo, Lu, Hf, and Ta; A: Al, Ge, Cu and Sn; X: C and N) as given in Tables 1, 2, 3 and shown in Figs. 2 and 3. Of the materials studied, only four were previously known from experiment to be superconductors, and some had been predicted to be superconducting in our earlier works. According to our screening method, for each A (A: Al, Ge, Cu and Sn) the highest superconducting T_c result is obtained with M = Cr and X = N. Whilst Nb₂GeC has the highest known experimental $T_c = 10$ K³⁰, the result of our high-throughput screening suggests that Cr₂AlN should have the highest $T_c = 16.5$ K of any M₂AX phase. This model prediction is then tested with a more detailed electron–phonon coupling calculation using Eliashberg theory.

Our DFT calculations show that Cr₂AlN is mechanically and dynamically stable, with ductile and metallic properties. The electron–phonon interaction is dominated by low-frequency Cr-based phonon modes and Cr 3d-based electronic states near the Fermi energy. Using Eliashberg theory, we calculate the total $\lambda = 0.861$ and hence using the most likely value of $\mu^* = 0.13$, we predict $T_c = 14.8$ K for Cr₂AlN. Based on our previous experience of comparing Eliashberg theory for M₂AX phases with experiment, we expect this to be within ± 1 K of

Phase	$N(E_F)$ (states/eV)	\sqrt{M} (amu ^{0.5})	T_c (K)
Sc ₂ GeC	2.65	18.7	0.9
V ₂ GeC	2.69	19.3	0.2
Cr ₂ GeC	3.58	19.4	11.7
Mn ₂ GeC	3.43	19.7	9.1
Fe ₂ GeC	3.61	19.8	11.2
Y ₂ GeC	3.35	22.9	2.1
Zr ₂ GeC	3.76	23.1	6.3
Hf ₂ GeC	4.31	29.7	1.8
Ta ₂ GeC	4.29	29.8	1.4
Sc ₂ SnC	3.22	21.0	5.3
V ₂ SnC	2.92	21.6	4.2
Cr ₂ SnC	4.25	21.7	7.9
Mn ₂ SnC	3.70	21.9	6.3
Fe ₂ SnC	3.81	22.0	6.5
Y ₂ SnC	3.59	24.8	4.8
Zr ₂ SnC	2.81	25.0	2.9
Hf ₂ SnC	2.49	31.2	0.8
Ta ₂ SnC	2.90	31.4	1.6

Table 2. Superconducting temperature values of all the different M₂AC (A: Ge and Sn) phases screened by the high-throughput Fröhlich model.

experiment. This value is considerably higher than the highest T_c value for any material in the M₂AX family studied to date. This finding should encourage further study into the superconductivity of M₂AX phases in general, and of Cr₂AlN in particular.

Supplementary information

In this paper we have presented detailed data on the electronic structure, phonons and electron–phonon coupling calculations for Cr₂AlN. As part of this study, we also used Migdal–Eliashberg (ME) theory to study 8 other materials, whose data is summarized in Table 1. The ME data for Nb₂GeC and Nb₂SnC have already been presented in Ref.² although the final T_c value was calculated with $\mu^* = 0.10$. The ME data for Ti₂GeC have already been presented in Ref.³. Hence we include the full data needed for the ME calculations on the other 5 materials (Mo₂GeC, Lu₂GeC, Ti₂SnC, Mo₂SnC and Lu₂SnC) in the Supplementary Information to this paper.

Phase	$N(E_F)$ (states/eV)	\sqrt{M} (amu ^{0.5})	$N(E_F)/\sqrt{M}$ (states/(eV amu ^{0.5}))	T_c (K)
Ti ₂ AlC	3.05 ³	16.4 ³	0.1857	11.2 ³
Ti ₂ CuC	3.34 ³	18.5 ³	0.1802	10.5 ³
Ti ₂ GeC	3.32 ³	19.0 ³	0.1747	9.3 ³
Ti ₂ SnC	3.43 ³	21.3 ³	0.1610	7.1 ³
Cr ₂ AlC	3.13	16.9	0.1851	11.1
Cr ₂ CuC	3.48	18.9	0.1836	10.7
Fe ₂ AlC	3.17	17.4	0.1826	10.5
Fe ₂ CuC	3.51	19.4	0.1814	10.4
Nb ₂ AlC	3.31 ²	21.2 ²	0.1561	6.9 ²
Nb ₂ CuC	4.14	22.9	0.1575	7.1
Nb ₂ GeC	3.99 ²	23.3 ²	0.1716	9.8 ²
Nb ₂ SnC	3.84 ²	25.2 ²	0.1527	6.3 ²
Mo ₂ AlC	3.83	21.5	0.1782	9.9
Mo ₂ CuC	4.09	23.1	0.1768	9.8
Ti ₂ AlN	4.57 ³	16.5 ³	0.2762	12.9 ³
Ti ₂ CuN	4.89 ³	18.6 ³	0.2627	10.3 ³
Ti ₂ GeN	5.14 ³	19.1 ³	0.2693	11.6 ³
Ti ₂ SnN	5.67 ³	21.4 ³	0.2654	11.0 ³
Cr ₂ AlN	5.06	17.0	0.2975	16.5
Cr ₂ CuN	5.48	19.1	0.2876	14.7
Cr ₂ GeN	5.51	19.5	0.2822	13.8
Cr ₂ SnN	5.94	21.8	0.2730	12.2
Fe ₂ AlN	4.83	17.5	0.2764	12.9
Fe ₂ CuN	5.43	19.5	0.2791	13.3
Fe ₂ GeN	5.26	19.9	0.2641	10.7
Fe ₂ SnN	5.96	22.1	0.2696	11.6
Nb ₂ AlN	5.88	21.3	0.2761	12.6
Nb ₂ CuN	5.45	22.9	0.2375	5.2
Nb ₂ GeN	6.32	23.3	0.2707	11.9
Nb ₂ SnN	6.29	25.2	0.2492	7.9
Mo ₂ AlN	5.83	21.6	0.2701	11.8
Mo ₂ CuN	5.97	23.2	0.2572	9.4
Mo ₂ GeN	6.30	23.6	0.2669	11.1
Mo ₂ SnN	6.32	25.5	0.2480	7.8

Table 3. Superconducting temperature values of M_2AC (M: Ti, Cr, Fe, Nb and Mo; A: Al, Cu, Ge and Sn; X: C and N) phases screened by the high-throughput Fröhlich model. Predicted T_c for Nb_2AC (A: Al, Cu, Ge and Sn) and Ti_2AX (A: Al, Cu, Ge and Sn; X: C and N) are taken from our previous publications^{2,3}. The new predicted T_c values based on the results in this paper are given in bold.

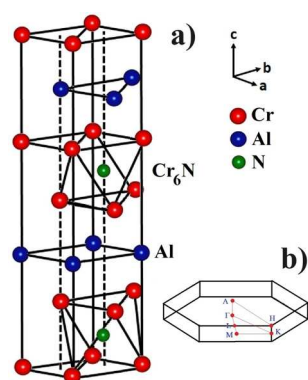


Figure 4. (a) The hexagonal crystal structure of Cr_2AlN , where blocks of Cr–N (formed by edge-shared Cr_6N octahedra) are sandwiched with Al atomic sheets. (b) The hexagonal Brillouin zone for Cr_2AlN .

Phase	<i>a</i> (Å)	<i>c</i> (Å)	<i>z</i>	<i>d</i> _{Cr–Cr} (Å)	<i>d</i> _{Cr–Al} (Å)	<i>d</i> _{Cr–N} (Å)	<i>B</i> (GPa)	<i>B</i> '
Cr ₂ AlN	2.832	12.664	0.083	2.658	2.677	1.942	175.10	1.59
GGA ³²	2.839	12.708	0.082				158.07	4.48
GGA ³³	2.843	12.672			2.691	1.943		
GGA ⁵⁴	2.847	12.689	0.082				229	

Table 4. Structural properties of the hexagonal Cr₂AlN for this work in bold. Other theoretical results are also included for comparison.

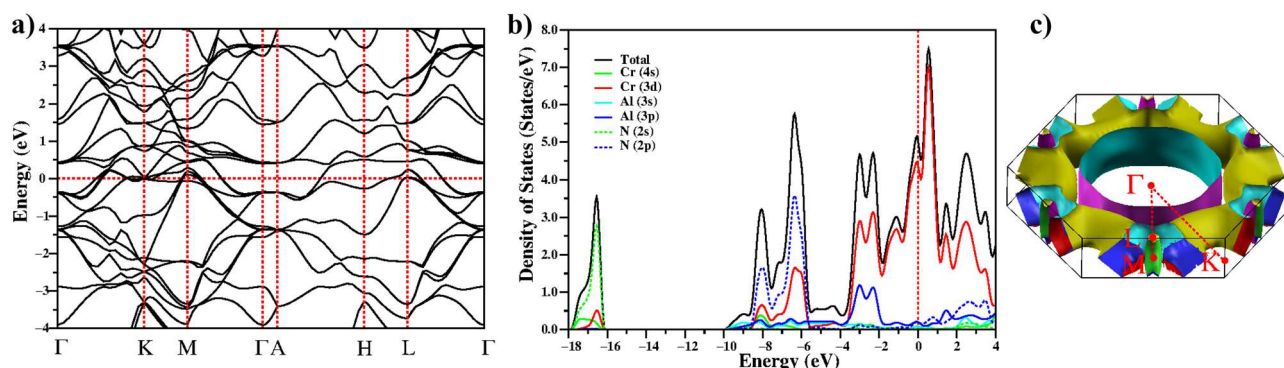


Figure 5. Electronic properties of the hexagonal phase of Cr₂AlN. (a) The electronic band structure, (b) the total and partial electronic local density of states, and (c) the Fermi surface.

Phase	<i>C</i> ₁₁	<i>C</i> ₁₂	<i>C</i> ₁₃	<i>C</i> ₃₃	<i>C</i> ₄₄
Cr ₂ AlN	286.66	83.43	147.81	378.35	78.84
GGA ³²	282	85	141	362	77
GGA ³³	279.52	81.90	143.57	370.31	77.65
GGA ³⁴	286.67	74.85	144.539	376.67	88.24

Table 5. The calculated second order elastic constants (in GPa) for hexagonal superconductor Cr₂AlN for this work in bold. Other theoretical results are also included for comparison.

Phase	<i>B</i> _V	<i>B</i> _R	<i>B</i> _H	<i>G</i> _V	<i>G</i> _R	<i>G</i> _H	<i>E</i>	<i>B</i> _H / <i>G</i> _H	σ
Cr ₂ AlN	189.97	179.63	184.80	90.03	87.88	88.96	229.96	2.077	0.293
GGA ³²		177	181	88	86	87		2.10	
GGA ³³			187.00			136.12	328.62	0.728	0.207
GGA ³⁴	186.43	175.872	181.15	95.55	93.63	94.59	241.697	1.915	0.278

Table 6. The estimated values of isotropic bulk modulus *B*_{VRH}, shear modulus *G*_{VRH}, Young's modulus *E* (all in GPa), *B*_H/*G*_H ratio and Poisson's ratio (σ) for Cr₂AlN for this work in bold, obtained from their second order elastic constants *C*_{*ij*}. Other theoretical results are also included for comparison.

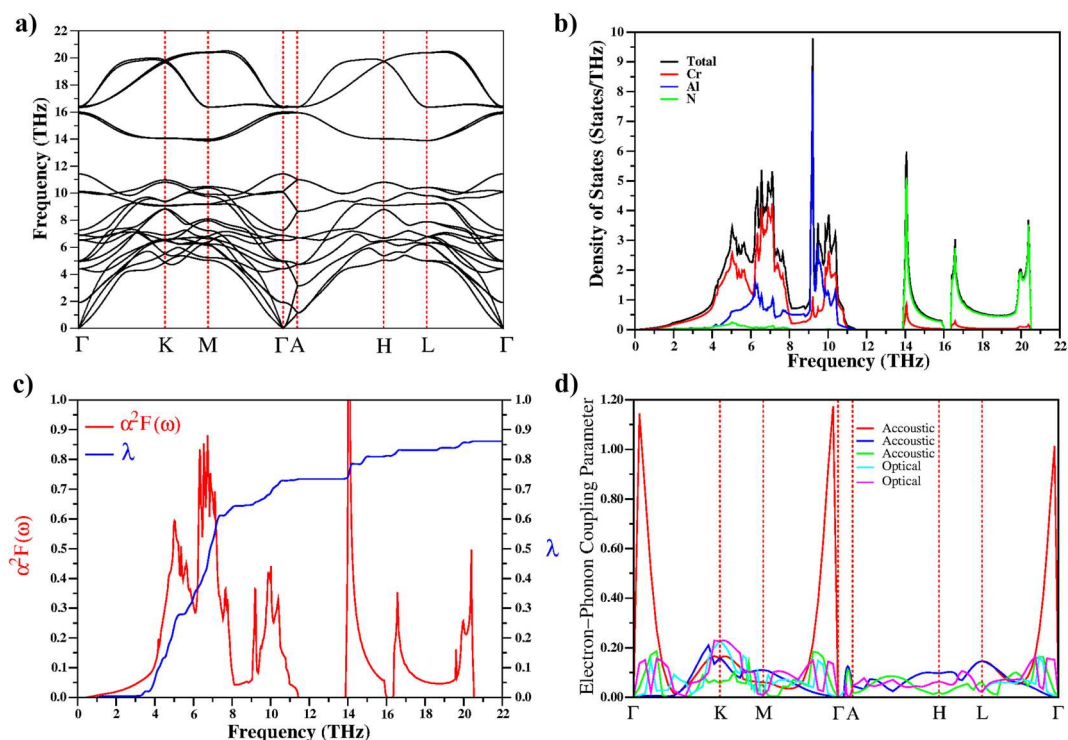


Figure 6. The calculated phonon properties of Cr_2AlN . **(a)** dispersion curves, **(b)** total and partial phonon density of states, and **(c)** the calculated electron–phonon spectral function $\alpha^2 F(\omega)$ (red line) and the variation of the electron–phonon coupling parameter (blue line) with rising frequency $\lambda(\omega)$. **(d)** Calculated wavevector-dependent electron–phonon coupling parameter for the 3 acoustic modes and 2 optical modes along the high symmetry lines in the Brillouin zone.

Data availability

The data created and analysed during the current study are available from <https://doi.org/10.15124/85422e07-e03d-49f9-81e1-eccea2943796>.

Received: 9 February 2023; Accepted: 13 April 2023

Published online: 21 April 2023

References

- Jeitschko, W., Nowotny, H. & Benesovsky, F. Ti_2AlN , eine stickstoffhaltige H-phase. *Monatshefte für Chemie und verwandte Teile anderer Wissenschaften* **94**, 1198 (1963).
- Karaca, E., Byrne, P. J. P., Hasnip, P. J., Tütüncü, H. & Probert, M. Electron–phonon interaction and superconductivity in hexagonal ternary carbides Nb_2AC (A: Al, S, Ge, As and Sn). *Electron. Struct.* **3**, 045001 (2021).
- Karaca, E., Byrne, P. J. P., Hasnip, P. J. & Probert, M. Prediction of phonon-mediated superconductivity in new Ti-based M_2AX phases. *Sci. Rep.* **12**, 13198 (2022).
- Barsoum, M. W. & El-Raghy, T. Synthesis and characterization of a remarkable ceramic: Ti_3SiC_2 . *J. Am. Ceram. Soc.* **79**, 1953 (1996).
- Barsoum, M. W., Brodtkin, D. & El-Raghy, T. Layered machinable ceramics for high temperature applications. *Scripta Mater.* **36**, 535 (1997).
- Barsoum, M. W. The $\text{M}_{N+1}\text{AX}_N$ phases: A new class of solids: Thermodynamically stable nanolaminates. *Prog. Solid State Chem.* **28**, 201 (2000).
- Barsoum, M., Golczewski, J., Seifert, H. & Aldinger, F. Fabrication and electrical and thermal properties of Ti_2InC , Hf_2InC and $(\text{Ti}, \text{Hf})_2\text{InC}$. *J. Alloy. Compd.* **340**, 173 (2002).
- Manoun, B. *et al.* Compression behavior of M_2AlC (M= Ti, V, Cr, Nb, and Ta) phases to above 50 GPa. *Phys. Rev. B* **73**, 024110 (2006).
- Hettinger, J. *et al.* Electrical transport, thermal transport, and elastic properties of M_2AlC (M=Ti, Cr, Nb, and V). *Phys. Rev. B* **72**, 115120 (2005).
- Eklund, P. *et al.* Epitaxial growth and electrical transport properties of Cr_2GeC thin films. *Phys. Rev. B* **84**, 075424 (2011).
- Eklund, P. *et al.* Discovery of the ternary nanolaminated compound Nb_2GeC by a systematic theoretical-experimental approach. *Phys. Rev. Lett.* **109**, 035502 (2012).
- Barsoum, M., Yaroshuk, G. & Tyagi, S. Fabrication and characterization of M_2SnC (M= Ti, Zr, Hf and Nb). *Scripta Mater.* **37**, 1583 (1997).
- Sun, Z., Li, S., Ahuja, R. & Schneider, J. M. Calculated elastic properties of M_2AlC (M= Ti, V, Cr, Nb and Ta). *Solid State Commun.* **129**, 589 (2004).
- Kumar, R. S., Reki, S., Cornelius, A. & Barsoum, M. W. Compressibility of Nb_2AsC to 41 GPa. *Appl. Phys. Lett.* **86**, 111904 (2005).
- Schneider, J. M. *et al.* Elastic properties of Cr_2AlC thin films probed by nanoindentation and ab initio molecular dynamics. *Scripta Mater.* **57**, 1137 (2007).

16. Emmerlich, J., Music, D., Houben, A., Dronskowski, R. & Schneider, J. Systematic study on the pressure dependence of M_2AlC phases ($M = Ti, V, Cr, Zr, Nb, Mo, Hf, Ta, W$). *Phys. Rev. B* **76**, 224111 (2007).
17. Wang, Q. *et al.* Fabrication and oxidation behavior of Cr_2AlC coating on Ti6242 alloy. *Surf. Coat. Technol.* **204**, 2343 (2010).
18. Hu, C. *et al.* On the rapid synthesis of the ternary Mo_2GaC . *J. Am. Ceram. Soc.* **98**, 2713 (2015).
19. Bortolozzo, A. D., Cremasco, A., Floriano, R. & Contieri, R. J. Effects of microwave heating in nanolaminated Nb_2GeC synthesis. *Ceram. Int.* **42**, 16343 (2016).
20. Hadi, M. Superconducting phases in a remarkable class of metallic ceramics. *J. Phys. Chem. Solids* **138**, 109275 (2020).
21. Toth, L. High superconducting transition temperatures in the molybdenum carbide family of compounds. *J. Less Common Met.* **13**, 129 (1967).
22. Sakamaki, K., Wada, H., Nozaki, H., Onuki, Y. & Kawai, M. Carbosulfide superconductor. *Solid State Commun.* **112**, 323 (1999).
23. Lofland, S. *et al.* Electron–phonon coupling in $M_{n+1}AX_n$ -phase carbides. *Phys. Rev. B* **74**, 174501 (2006).
24. Bortolozzo, A. *et al.* Superconductivity in the Nb_2SnC compound. *Solid State Commun.* **139**, 57 (2006).
25. Bortolozzo, A., Sant’Anna, O., Dos Santos, C. & Machado, A. Superconductivity in the hexagonal-layered nanolaminates Ti_2InC compound. *Solid State Commun.* **144**, 419 (2007).
26. Bortolozzo, A., Fisk, Z., Sant’Anna, O., Dos Santos, C. & Machado, A. Superconductivity in Nb_2InC . *Phys. C* **469**, 256 (2009).
27. Bortolozzo, A. *et al.* Superconductivity at 7.3 K in Ti_2InN . *Solid State Commun.* **150**, 1364 (2010).
28. Bortolozzo, A., Sant’Anna, O., Dos Santos, C. & Machado, A. Superconductivity at 9.5 K in the Ti_2GeC compound. *Mater. Sci. Pol.* **30**, 92 (2012).
29. Kuchida, S. *et al.* Superconductivity in Lu_2SnC . *Phys. C* **494**, 77 (2013).
30. Bortolozzo, A. D., Osorio, W. R., de Lima, B. S., Dos Santos, C. A. M. & Machado, A. J. S. Superconducting evidence of a processed Nb_2GeC compound under a microwave heating. *Mater. Chem. Phys.* **194**, 219 (2017).
31. Sun, Z., Music, D., Ahuja, R. & Schneider, J. M. Ab initio study of M_2AlN ($M = Ti, V, Cr$). *J. Phys. Condens. Matter* **17**, L15 (2005).
32. Cui, S., Wei, D., Hu, H., Feng, W. & Gong, Z. First-principles study of the structural and elastic properties of Cr_2AlX ($X = N, C$) compounds. *J. Solid State Chem.* **191**, 147 (2012).
33. Li, N., Mo, Y. & Ching, W.-Y. The bonding, charge distribution, spin ordering, optical, and elastic properties of four MAX phases Cr_2AX ($A = Al$ or Ge , $X = C$ or N): From density functional theory study. *J. Appl. Phys.* **114**, 183503 (2013).
34. Khazaei, M., Arai, M., Sasaki, T., Estili, M. & Sakka, Y. Trends in electronic structures and structural properties of MAX phases: a first-principles study on M_2AlC ($M = Sc, Ti, Cr, Zr, Nb, Mo, Hf$, or Ta), M_2AlN , and hypothetical M_2AlB phases. *J. Phys. Condens. Matter* **26**, 505503 (2014).
35. Giannozzi, P. *et al.* QUANTUM ESPRESSO: a modular and open-source software project for quantum simulations of materials. *J. Phys. Condens. Matter* **21**, 395502 (2009).
36. Giannozzi, P. *et al.* Advanced capabilities for materials modelling with Quantum ESPRESSO. *J. Phys. Condens. Matter* **29**, 465901 (2017).
37. Migdal, A. Interaction between electrons and lattice vibrations in a normal metal. *Sov. Phys. JETP* **7**, 996 (1958).
38. Eliashberg, G. Interactions between electrons and lattice vibrations in a superconductor. *Sov. Phys. JETP* **11**, 696 (1960).
39. McMillan, W. Transition temperature of strong-coupled superconductors. *Phys. Rev.* **167**, 331 (1968).
40. Allen, P. B. & Dynes, R. Transition temperature of strong-coupled superconductors reanalyzed. *Phys. Rev. B* **12**, 905 (1975).
41. Allen, P. & Dynes, R. Superconductivity at very strong coupling. *J. Phys. C Solid State Phys.* **8**, L158 (1975).
42. Baroni, S., Giannozzi, P. & Isaev, E. Density-functional perturbation theory for quasi-harmonic calculations. *Rev. Mineral. Geochem.* **71**, 39 (2010).
43. Rappe, A. M., Rabe, K. M., Kaxiras, E. & Joannopoulos, J. Optimized pseudopotentials. *Phys. Rev. B* **41**, 1227 (1990).
44. Perdew, J. P., Burke, K. & Ernzerhof, M. Generalized gradient approximation made simple. *Phys. Rev. Lett.* **77**, 3865 (1996).
45. Monkhorst, H. J. & Pack, J. D. Special points for Brillouin-zone integrations. *Phys. Rev. B* **13**, 5188 (1976).
46. Savrasov, S. Y., Savrasov, D. Y. & Andersen, O. Linear-response calculations of electron–phonon interactions. *Phys. Rev. Lett.* **72**, 372 (1994).
47. Savrasov, S. Y. & Savrasov, D. Y. Electron–phonon interactions and related physical properties of metals from linear-response theory. *Phys. Rev. B* **54**, 16487 (1996).
48. Liu, A. Y. & Quong, A. A. Linear-response calculation of electron–phonon coupling parameters. *Phys. Rev. B* **53**, R7575 (1996).
49. Bauer, R., Schmid, A., Pavone, P. & Strauch, D. Electron–phonon coupling in the metallic elements al, au, na, and nb: A first-principles study. *Phys. Rev. B* **57**, 11276 (1998).
50. Baroni, S., De Gironcoli, S., Dal Corso, A. & Giannozzi, P. Phonons and related crystal properties from density-functional perturbation theory. *Rev. Mod. Phys.* **73**, 515 (2001).
51. Fröhlich, H. Theory of the superconducting state. I. The ground state at the absolute zero of temperature. *Phys. Rev.* **79**, 845 (1950).
52. Bardeen, J., Cooper, L. & Schrieffer, J. Theory of superconductivity. *Phys. Rev.* **108**, 1175 (1957).
53. Romero, M., Huerta, L., Akachi, T., Llamazares, J. S. & Escamilla, R. X-ray photoelectron spectroscopy studies of the electronic structure of superconducting Nb_2SnC and Nb_2SC . *J. Alloy. Compd.* **579**, 516 (2013).
54. Sun, Z., Music, D., Ahuja, R. & Schneider, J. M. Ab initio study of M_2AlN ($M = Ti, V, Cr$). *J. Phys. Condens. Matter* **17**, L15 (2004).
55. Ali, M. *et al.* Recently synthesized $(Zr_{1-x}Ti_x)_2AlC$ ($0 \leq x \leq 1$) solid solutions: Theoretical study of the effects of M mixing on physical properties. *J. Alloy. Compd.* **743**, 146 (2018).
56. Ali, M. & Naqib, S. Recently synthesized $(Ti_{1-x}Mo_x)_2AlC$ ($0 \leq x \leq 0.20$) solid solutions: deciphering the structural, electronic, mechanical and thermodynamic properties via ab initio simulations. *RSC Adv.* **10**, 31535 (2020).
57. Dal Corso, A. Elastic constants of beryllium: A first-principles investigation. *J. Phys. Condens. Matter* **28**, 075401 (2016).
58. Born, M. & Huang, K. *Theory of Crystal Lattices* (Clarendon, 1956)
59. Wu, Z.-J. *et al.* Crystal structures and elastic properties of superhard irn_2 and irn_3 from first principles. *Phys. Rev. B* **76**, 054115 (2007).
60. Voigt, W. *Lehrbuch der kristallphysik:(mit ausschluß der kristalloptik)*, vol. 34 (Publisher BG Teubner, 1910).
61. Reuß, A. Berechnung der fließgrenze von mischkristallen auf grund der plastizitätsbedingung für einkristalle. *ZAMM J. Appl. Math. Mechanics/Zeitschrift für Angewandte Mathematik und Mechanik* **9**, 49 (1929).
62. Hill, R. The elastic behaviour of a crystalline aggregate. *Proc. Phys. Soc. Sect. A* **65**, 349 (1952).
63. Pugh, S. Xcii. relations between the elastic moduli and the plastic properties of polycrystalline pure metals, The London, Edinburgh, and Dublin. *Philos. Mag. J. Sci.* **45**, 823 (1954).
64. Haines, J., Leger, J. & Bocquillon, G. Synthesis and design of superhard materials. *Annu. Rev. Mater. Res.* **31**, 1 (2001).
65. Hadi, M. *et al.* Chemically stable new MAX phase V_2SnC : A damage and radiation tolerant TBC material. *RSC Adv.* **10**, 43783 (2020).
66. Yan, D. *et al.* Superconductivity and Fermi-surface nesting in the candidate Dirac semimetal NbC . *Phys. Rev. B* **102**, 205117 (2020).

Acknowledgements

This work was supported by the Scientific and Technical Research Council of Turkey (TÜBİTAK) (2219 International Post Doctoral Research Fellowship Programme Project Number 1059B191900055). P.J.H. was funded by an EPSRC RSE Fellowship (EPSRC grant EP/R025770/1). P.J.B. was funded by the UKCP High End Compute

Consortium (EPSRC grant EP/W030438/1). This project was undertaken on the Viking Cluster, which is a high performance compute facility provided by the University of York. We are grateful for computational support from the University of York HPC service.

Author contributions

All authors co-wrote the paper. E.K. performed the DFT calculations, P.J.P.B. and P.J.H. gave theoretical and computational insights and guidance, M.I.J.P. conceived and designed the study.

Competing interests

The authors declare no competing interests.

Additional information

Supplementary Information The online version contains supplementary material available at <https://doi.org/10.1038/s41598-023-33517-0>.

Correspondence and requests for materials should be addressed to P.J.P.B.

Reprints and permissions information is available at www.nature.com/reprints.

Publisher's note Springer Nature remains neutral with regard to jurisdictional claims in published maps and institutional affiliations.



Open Access This article is licensed under a Creative Commons Attribution 4.0 International License, which permits use, sharing, adaptation, distribution and reproduction in any medium or format, as long as you give appropriate credit to the original author(s) and the source, provide a link to the Creative Commons licence, and indicate if changes were made. The images or other third party material in this article are included in the article's Creative Commons licence, unless indicated otherwise in a credit line to the material. If material is not included in the article's Creative Commons licence and your intended use is not permitted by statutory regulation or exceeds the permitted use, you will need to obtain permission directly from the copyright holder. To view a copy of this licence, visit <http://creativecommons.org/licenses/by/4.0/>.

© The Author(s) 2023