

Journal Pre-proof

Hospital resource utilization in a national cohort of functionally single ventricle patients undergoing surgical treatment

Dan-Mihai Dorobantu, MD, Qi Huang, PhD, PhD, Ferran Espuny Pujol, PhD, Katherine L. Brown, MD, MPH, Rodney C. Franklin, MD, FRCP, Maria Pufulete, PhD, Deborah A. Lawlor, PhD, MSc, MB ChB, Sonya Crowe, PhD, Christina Pagel, PhD, Serban C. Stoica, MD, FRCS

PII: S2666-2736(23)00089-X

DOI: <https://doi.org/10.1016/j.xjon.2023.03.014>

Reference: XJON 755

To appear in: *JTCVS Open*

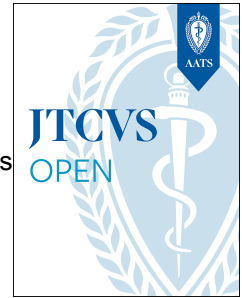
Received Date: 27 November 2022

Accepted Date: 28 March 2023

Please cite this article as: Dorobantu DM, Huang Q, Pujol FE, Brown KL, Franklin RC, Pufulete M, Lawlor DA, Crowe S, Pagel C, Stoica SC, Hospital resource utilization in a national cohort of functionally single ventricle patients undergoing surgical treatment, *JTCVS Open* (2023), doi: <https://doi.org/10.1016/j.xjon.2023.03.014>.

This is a PDF file of an article that has undergone enhancements after acceptance, such as the addition of a cover page and metadata, and formatting for readability, but it is not yet the definitive version of record. This version will undergo additional copyediting, typesetting and review before it is published in its final form, but we are providing this version to give early visibility of the article. Please note that, during the production process, errors may be discovered which could affect the content, and all legal disclaimers that apply to the journal pertain.

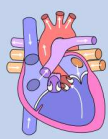
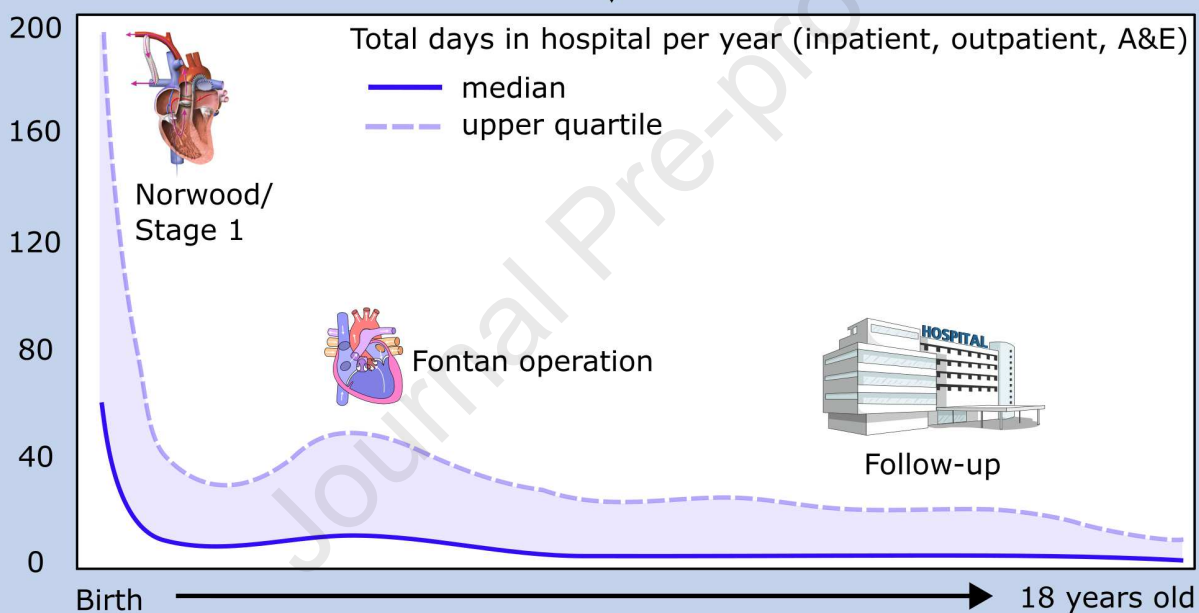
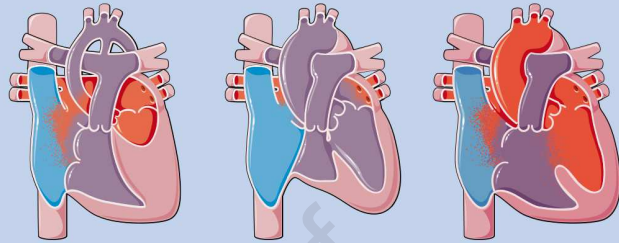
Copyright © 2023 The Authors. Published by Elsevier Inc. on behalf of The American Association for Thoracic Surgery



Hospital resource utilization in single ventricle patients

 **LAUNCHES project** 3038 single ventricle patients
4 national datasets

NCHDA - Cardiac procedures
PicaNet - Intensive care
ONS - Life status
HES - Hospital visits



First year of life critical -> high mortality
Post-Fontan -> most need only annual check-ups
High-risk groups maintain high resource utilization

Understanding hospital resource utilization can:

- ➔ Improve risk stratification and interstage surveillance
- ➔ Improve distribution of hospital resources
- ➔ Improve family and patient counselling

Journal Pre-proof

1 **Hospital resource utilization in a national cohort of functionally single ventricle patients**
 2 **undergoing surgical treatment**

3 Dan-Mihai Dorobantu, MD, ^{1,2,3} Qi Huang, PhD, ⁴ PhD, Ferran Espuny Pujol, PhD, ⁴ Katherine L.
 4 Brown, MD, MPH, ⁵ Rodney C. Franklin, MD, FRCP, ⁶, Maria Pufulete, PhD, ⁷ Deborah A. Lawlor,
 5 PhD, MSc, MB ChB ^{2,8,9} Sonya Crowe, PhD, ⁴ Christina Pagel, PhD, ⁴ Serban C. Stoica, MD,
 6 FRCS, ³

- 7 1. Children's Health and Exercise Research Centre (CHERC), University of Exeter, Exeter,
8 United Kingdom
- 9 2. Population Health Sciences, University of Bristol, Bristol, United Kingdom
- 10 3. University Hospitals Bristol and Weston National Health Service Foundation Trust, Bristol,
11 United Kingdom
- 12 4. Clinical Operational Research Unit, Department of Mathematics, University College
13 London, London, United Kingdom
- 14 5. Cardiac and Critical Care Division, Great Ormond Street Hospital National Health
15 Service Foundation Trust, London, United Kingdom
- 16 6. Department of Paediatric Cardiology, Royal Brompton and Harefield National Health
17 Service Foundation Trust, London, United Kingdom
- 18 7. Bristol Heart Institute, University of Bristol, Bristol, UK
- 19 8. Medical Research Council (MRC) Integrative Epidemiology Unit (IEU) at the University
20 of Bristol, Bristol, UK
- 21 9. Bristol National Institute for Health Research (NIHR) Biomedical Research Centre,
22 Bristol, UK

23 **Corresponding author:** Dr. Dan-Mihai Dorobantu, email: dd389@exeter.ac.uk

24 Children's Health and Exercise Research Centre (CHERC), Public Health and Sports Sciences,
 25 University of Exeter Medical School, Faculty of Life and Health Sciences, St Luke's Campus,
 26 Heavitree Road, Exeter, EX1 2LU, United Kingdom

27 **Manuscript word count:** 3174 **Abstract word count:** 251

28 **Sources of funding:** The contribution of CP, SC, FEP, SS, KB, RF for this work was supported
29 by the Health Foundation, an independent charity committed to bringing about better health and
30 health care for people in the UK (Award number 685009). This project was also supported through
31 the British Heart Foundation Project Grant no. PG/17/88/33401. KB also benefited from funding
32 received by The Great Ormond Street Hospital NIHR Biomedical Research Centre. DAL's
33 contribution to this work is supported by the UK Medical Research Council (MC_UU_00011/1)
34 and British Heart Foundation (CH/F/20/90003 and AA/18/7/34219). QH was supported for this
35 project by Above & Beyond, a University Hospitals Bristol charity (Award number 2019-Aut-06).
36 DMD is supported by a PhD Studentship (grant MR/N0137941/1 for the GW4 BIOMED DTP),
37 awarded by the Medical Research Council (MRC)/United Kingdom Research and Innovation and
38 unrelated to this work. The views expressed are those of the authors and not necessarily those of
39 the National Health Service, National Institute for Health Research, or Department of Health.

40 **Disclosures:** DAL has received support from Roach Diagnostics and Medtronic Ltd for research
41 unrelated to that presented here; other authors declare no conflicts of interest.

42 **Institutional Review Board (IRB) approval:** The LAUNCHES project received ethical approval
43 from the Health Research Authority (reference: IRAS 246796, October 2018) and the
44 Confidentiality Advisory Group (reference: 18/CAG/0180, November 2018) in accordance with
45 the Declaration of Helsinki.

46 **Abstract and key words**

47 **Objective:** To provide a detailed overview of health resource utilization from birth to 18 years old
48 for functionally single ventricle (f-SV) patients and identify associated risk factors.

49 **Methods:** All f-SV patients treated between 2000-2017 in England and Wales were linked to
50 hospital and outpatient records using data from the Linking AUdit and National datasets in
51 Congenital HEart Services (LAUNCHES) project. Hospital stay was described in yearly age
52 intervals and associated risk factors were explored using quantile regression.

53 **Results:** A total of 3,037 f-SV patients were included, 1409 (46.3%) undergoing a Fontan
54 procedure. During the first year of life the median days spent in-hospital was 60 (IQR 37-102),
55 mostly inpatient days, mirroring a mortality of 22.8%. This decreases to between 2-9 in-hospital
56 days/year afterwards. Between 2-18 years most hospital days were outpatient, with a median of 1-
57 5 days/year.

58 Lower age at the first procedure, hypoplastic left heart syndrome/mitral atresia, unbalanced
59 atrioventricular septal defect, preterm birth, congenital/acquired comorbidities, additional cardiac
60 risk factors and severity of illness markers were associated with fewer days-at-home and more
61 ICU days in the first year of life. Only markers of early severe illness were associated with fewer
62 days-at-home in the first 6 months post Fontan procedure.

63 **Conclusions:** Hospital resource utilization in f-SV is not uniform, decreasing tenfold during
64 adolescence compared to the first year of life. There are subsets of patients with worse outcomes
65 during their first year of life, or with persistently high hospital usage throughout their childhood,
66 which could be the target of future research.

- 67 **Key words:** single ventricle, Norwood, Fontan, hospital length of stay, registry, hospital resources,
68 hypoplastic left heart syndrome

Journal Pre-proof

69 GLOSSARY

70 A&E – accidents and emergencies (emergency room)

71 CHD – congenital heart disease

72 CI – confidence interval

73 CPB – cardiopulmonary bypass

74 ECMO - extracorporeal membrane oxygenation

75 f-SV – functionally single ventricle

76 HES – hospital episode statistics

77 HLHS – hypoplastic left heart syndrome

78 ICU – intensive care unit

79 IQR – interquartile range

80 LAUCHES QI – The Linking AUdit and National datasets in Congenital HEart Services for

81 Quality Improvement

82 NCHDA – National Congenital Heart Disease Audit

83 ONS – Office for National Statistics

84 PICANet – pediatric intensive care audit network

85

86 Central message

87 After a resource intensive first years of life, most adolescents with Fontan circulation will only
88 need yearly outpatient visits, with a minority maintaining high hospital resource utilization.

89 Perspective statement

90 This study describes in new detail the time spent in hospital as well as outpatient episodes, from
91 birth to adult care in all single ventricle patients receiving at least one intervention. These results
92 can improve how single ventricle associated healthcare resources are distributed by policy makers
93 across age groups, counselling of families and patients and identifying high-risk populations.

94 Central Picture Legend

95 Total hospital resource utilization in single ventricle (f-SV) from birth to 18 years old

96 INTRODUCTION

97 Functionally single ventricle (f-SV) encompasses a wide variety of congenital heart disease
98 (CHD), where a biventricular circulation cannot be established, currently treated with a three
99 staged approach.¹ Advances in surgical techniques, critical care and follow-up improved their
100 outcomes, which still remain less favourable than other complex CHD.²⁻⁶

101 Treatment in f-SV is highly resource intensive, through time spent in hospital, financial and
102 logistical costs.⁷⁻¹¹ Current data focuses on each treatment stage,¹²⁻¹⁷ on certain aspects of care
103 such as total hospital costs,^{10,11,15} non-cardiac hospitalizations,^{7,18} or costs associated with poor
104 outcome.¹⁹ Longitudinal studies, such as the Philadelphia foetus-to-Fontan study,⁸ the
105 Australia/New Zealand registry,²⁰ or the Utah state-wide analysis²¹ provide insights into resource
106 utilization associated with f-SV care, but limited to recipients of the Fontan operation, or without
107 discriminating between inpatient or outpatient stay. A complete overview of hospital stays in f-SV
108 including cardiac and non-cardiac, inpatient and outpatient, from birth to adult care is not available.
109 This gap in knowledge limits clinicians' ability to evaluate optimal management, policy makers'
110 ability to allocate resources, and families' opportunities to adjust and plan to what their expected
111 real-life challenges would be, despite this latter point being a major source of anxiety for parents.²²

112 As part of the The Linking AUdit and National datasets in Congenital HEart Services for Quality
113 Improvement (LAUCHES QI) project,²³ the current study aims to: 1. Evaluate hospital resource
114 utilization in f-SV treatment, from birth to late adolescence; 2. Investigate factors associated with
115 fewer days spent at home and more days spent in the ICU during the first year of life of infants
116 with f-SV; 3. Report hospital resource utilization following the Fontan procedure, and factors
117 associated with postoperative ICU stay, and fewer days at home within 6 months of the Fontan
118 operation.

119 PATIENTS AND METHODS

120 *LAUNCHES QI - linking UK national datasets on congenital heart disease care*

121 The LAUNCHES QI project links several national datasets from the UK, evaluating outcomes and
122 hospital resource utilization related to CHD care, with full linkage of all datasets covering England
123 and Wales. These include the National Congenital Heart Disease Audit (NCHDA), which collects
124 procedure based information from all congenital heart disease centres (April 2000-March 2017);
125 the paediatric intensive care audit network (PICANet) for admissions to paediatric intensive care
126 units (ICU) (2001-March 2017); death registrations from the Office for National Statistics (ONS)
127 (up to February 2022); and hospital episode statistics (HES), which contains routine
128 administrative data on inpatient, outpatient and emergency care at hospitals in England (inpatient
129 April 2000-March 2017, outpatient April 2003-March 2017, accidents and emergency department
130 (A&E) April 2007- March 2017).²³ The LAUNCHES project received ethical approval from the
131 Health Research Authority (reference: IRAS 246796) and the Confidentiality Advisory Group
132 (reference: 18/CAG/0180) in accordance with the Declaration of Helsinki.

133 *Clinical data collection, classification, and management*

134 The patient inclusion and exclusion steps are summarized in Figure 1. All clinical data were
135 organised into patient care episodes or “spells”, containing patient events separated by no more
136 than 24 hours,²³ classified as cardiac or non-cardiac. Survival data for a cohort encompassing the
137 currently analysed population was previously reported.⁶

138 Cardiac diagnosis and procedure codes²⁴ were used to identify patients with f-SV: firstly, those
139 undergoing biventricular repair were excluded;³ next, a stepwise algorithm was used to identify
140 HLHS² and non-HLHS subtypes.⁵

141 The following patient/procedure data were extracted from the available datasets (detailed in
142 Supplementary Methods): age and weight, gender, anatomical diagnosis within 8 defined
143 subgroups,^{2,3} preoperative risk factors,²⁵ year of procedures, type of stage 1 procedure,³ stage
144 2/stage 3 status, number of off-pathway procedures performed that are not part of the Fontan
145 pathway, such as revisions of the arterial shunts, conduit reinterventions or recoarctation
146 treatment,^{2,3} total cardiopulmonary bypass (CPB) time in the 1st year of life (as a surrogate for
147 number and complexity of cumulated surgical procedures), Fontan operation cross clamp duration.
148 Each dataset has a different start date and end date, and data collection rules vary by time, such as
149 preoperative risk factors being collected systematically after 2009. This has led to each analysis
150 being performed for periods when all required datasets overlapped, mentioned at each respective
151 step. For hospital resource utilization left truncation occurs where data were available only from a
152 given age onwards. Patients presenting in the lower age limit of age intervals who die or are
153 censored before the upper age limit are considered to not have complete hospital utilization data
154 for that interval (right censoring).

155 In addition, PICANet employs an internal censoring mechanism, where entries of patients older
156 than 18 years old can no longer be identified, so those born before 2002 were not linked.

157 Details on data collection, classification, and management are available in the Supplementary
158 Methods.

159 **Outcomes**

160 *Hospital resource utilization outcomes:* 1. days in hospital: total (inpatient, outpatient and A&E),
161 inpatient, outpatient, and ICU days during the first year of life (1-month age intervals) 2. days in
162 hospital: total (inpatient, outpatient and A&E), inpatient, outpatient and ICU days from 0-18 years

163 (one year age intervals) 3. days-at-home during the 1st year of life 4. Inpatient care episode (spell)
164 length and ICU days post Fontan procedure 5. Inpatient days and days-at-home in the first 6
165 months post Fontan procedure. Care episode length and ICU length of less than one day are
166 counted as one day.

167 *Vital status:* Patient life status was provided at the point of hospital discharge by NCHDA for each
168 cardiac procedure and at date of extract by the Office of National Statistics (national death registry
169 data). Any patients with missing ONS life status were censored at their last known live discharge
170 age.

171 ***Statistical Analyses***

172 Frequencies are reported as numbers and proportions, and continuous variables as median with
173 inter-quartile range (IQR) and minimum-maximum range, as well as means in Supplemental
174 Tables S2-S9. Any missing values affecting the denominator or leading to exclusions from analyses
175 are detailed where relevant and were not imputed due to the high level of data completeness.

176 *Hospital resource utilization (first year of life and 0-18 years)*

177 Median (IQR) days in hospital/ICU were counted within each age interval. Intervals of one month
178 were used for the first year of life and 1-year age intervals were used for 2-18 years. The numbers
179 of patients who died or were right-censored within each interval are reported (Tables S2-S9).

180 *Factors associated with days-at-home and ICU time analysis*

181 To investigate factors associated with hospital resource utilization, four outcomes of interest were
182 used: days-at-home and days in ICU during first year of life, postoperative ICU days during the
183 Fontan episode (spell) of care, and days-at-home within 6-months post-Fontan. Patients who died
184 before year 1/within 6-months of a Fontan procedure were assigned a value of zero days-at-home

185 as the worst outcome.^{26,27} Patients censored in HES/PICANet during the first year of life (or within
186 six-months of Fontan procedure) were excluded from the respective days-at-home/days in ICU
187 analyses.

188 Quantile regression was carried out to explore factors associated with the median of each outcome
189 of interest, as the data are highly skewed.²⁸ Effects are presented as univariable and adjusted
190 coefficients and 95% confidence intervals (CI). Clustered standard errors were computed for all
191 models to allow for intra-centre correlation.^{28,29} Clinically relevant factors were selected as
192 candidate explanatory variables in the models (detailed in Supplementary Methods).

193 All statistical analyses were performed using STATA/SE 17.0 (StataCorp LLC, College Station,
194 Texas, USA), and figures created using R version 4.1.2 (R Foundation for Statistical Computing,
195 Vienna, Austria).

196 **RESULTS**

197 A total of 3,037 f-SV patients, with hypoplastic left heart syndrome (HLHS) and other non-HLHS
198 subtypes of f-SV, undergoing their 1st cardiac procedure between April 2000-March 2017 were
199 included (Figure 1). Table 1 shows detailed demographic, clinical, and procedural data for the
200 whole cohort (n=3037), and the Fontan procedure subgroup (n=1,409, 46.3%).

201 *Hospital resource utilization by age intervals*

202 There were 176,751 care episodes (spells) analysed, after exclusion of unattended outpatient
203 episodes (n=23,985) and those with age at admission anomalies (admission age later than age at
204 death, n=213). Of these, 45% were cardiac and the remainder were non-cardiac or ambiguous. By
205 admission type, 19.5% were inpatient and 75.5% outpatient, while 5% were A&E attendance
206 without admission. Of the non-cardiac/ambiguous episodes with reported cause, the most common

207 were: anticoagulant service (8.3%), haematology (6.7%), respiratory conditions (5.2%), dietetics
208 (2.7%) and dentistry (2.5%).

209 *During the first year of life*

210 The median number of days in hospital (inpatient, outpatient or A&E without admission) decreases
211 from 25 days [IQR: 14, 30] in the first month, to 8 days [IQR: 2, 14] in the second month, and to
212 3-4 days between 3-6 months and 1-2 days between 7-12 months of age (Figure 2, Panel A).
213 Similarly, most inpatient and ICU days were during the first two months of life (Figure 2, Panel B
214 and C respectively.) The outpatient visits in the first year had a median of at most one day/month.
215 (Figure 2, Panel D). Median, IQR, range and mean values as well as the number of deaths and
216 censoring in each age intervals for Figure 2 are provided in Supplemental Tables S2-S5. The
217 majority of hospital days were for cardiac causes.

218 *From birth to 18 years old*

219 The overall median number of days spent in hospital (inpatient, outpatient, or A&E without
220 admission) decreased from 60 days [IQR: 37, 102] for first year of life to fewer than 4 days/year
221 for ages 7-18 years, with a small increase around 3-6 years (the Fontan operation age) (Figure 3,
222 Panel A). A similar pattern is seen in inpatient hospital days/year (from 43 to 0 days/year) (Figure
223 3, Panel B), and days in ICU/year (from 10 to 0 days/year) (Figure 3, Panel C) and to a lesser
224 degree outpatient days/year (from 8 to 1-3 days/year) (Figure 3, Panel D). Median, IQR, range and
225 mean values for Figure 3 are provided in Supplemental Tables S6-9. A&E without admission
226 amount on average to <1 day/year per patient. Supplemental Tables 6-9 also detail deaths within
227 each 1-year follow-up intervals.

228 *Factors associated with hospital resource utilization during the first year of life*

229 There were 693 (n=22.8%) deaths during the first year of life, mostly in-hospital (n=633/693,
230 91.3%). During the same period, an ICU admission was recorded in 2,589 (95%) and
231 extracorporeal membrane oxygenation (ECMO) in 122 (4.5%) patients. The number of inpatient
232 days, ICU days and ECMO days during the 1st year of life by survivor status and Stage are shown
233 in Table 2. Non-survivors had fewer inpatient days on average (of them only 10% reached stage
234 2), but with longer ICU stays and more ECMO days. Most of the resource utilization was related
235 to Stage 1, and less so to Stage 2 procedures. For patients undergoing at least one on-pump
236 procedure, the median total CPB time during the first year of life was 2 hours (IQR 1.4-2.6, range
237 0.1-10.1).

238 Factors associated with fewer days spent at home and more days spent in the ICU during the first
239 year of life, from the univariable and multivariable analyses are given in Table 3.

240 ***Fontan procedure episode: hospital length of stay and factors associated with days in ICU***

241 The median inpatient stay following the Fontan procedure was 13 days (IQR 10-20, range 1-273),
242 and the median ICU stay following the Fontan procedure was 2 days (IQR 1-3, range 1-257). There
243 were 23 (1.6%) in-hospital deaths, with non-survivors having a median spell length post-Fontan
244 of 23 days (IQR 3-57, range 1-273), and median ICU stay of 22 days (IQR 4-54, range 1-257).
245 One single extreme case (ICU stay of 257 days) required a heart transplant during the same
246 protracted hospital stay.

247 There were 424 patients born after 2009 with PICANet ICU records included in this analysis, of
248 whom five (1.2%) died following the Fontan procedure. None of the evaluated factors showed a
249 significant association with ICU stay, in univariable or multivariable regression.

250 ***6-months post-Fontan: inpatient hospital days and factors associated with fewer days-at-home***

251 In the first 6 months following the Fontan procedure, there were no additional inpatient episodes
252 (spells) in 62.9% of patients, one in 22.7%, two in 8.4%, three or more in in 7% of patients. For
253 those with at least one additional inpatient event, the median inpatient stay was two days (IQR 1-
254 6, range 1-114). There were 30 (2.1%) deaths within 6 months of a Fontan procedure, 22 being in-
255 hospital deaths.

256 In the adjusted model (n=419 patients born after 2009 with complete HES follow-up or death
257 within 6 months of the Fontan procedure), severity of illness marker at any time before the Fontan
258 operation (coefficient -9.1, CI [-13.2; -5.3], $p<0.001$) and more exposure to CPB during the first
259 year of life (coefficient -1.3, CI [-2.2; -0.5], $p=0.002$) were associated with fewer days-at-home
260 within 6 months of the Fontan procedure.

261 **DISCUSSION**

262 This analysis of hospital resource utilization and associated factors in patients with functionally
263 single ventricle offers a comprehensive overview of hospital days from birth to 18 years of age
264 (Figure 4), adding to previous work on s-FV survival and associated risk factors.⁶ The main finding
265 is that after a critical first month of life when infants spend most of their time as inpatients, time
266 spent in hospital gradually decreases. It is as low as two days/year (median) for an 18-year-old,
267 transitioning to mostly outpatient-based care in adolescence. This shows a very good clinical
268 course for most Fontan procedure survivors, which is important for counselling.

269 Equally important but less optimistic, there are a group of patients with high first year mortality or
270 requiring continued high levels of hospitalisation and outpatient visits throughout their childhood
271 and adolescence. Several risk factors have been identified and should be the focus of future
272 research in these subgroups at-risk. Given the significant overlap between these factors associated

273 with hospital resource utilization in survivors, and those previously reported to be linked to
274 mortality,⁶ identifying measures to reduce their impact, could result in both lower mortality, and
275 lower morbidity and hospital costs.

276 *The hospital journey of f-SV patients from birth to 18 years old*

277 Management of f-SV is resource intensive, both in hospital stay and financial costs,^{7-11,15} especially
278 in Norwood non-survivor cases.¹⁹ Previous research has offered useful information on how
279 hospital days are distributed throughout childhood for f-SV patients, but not without limitations.
280 The Philadelphia fetus-to-Fontan study reported a median of 21.5 days spent in hospital from birth
281 to Stage 1, and a median of two days for the interstage period,⁸ however it lacks data beyond
282 Fontan and is limited to single center follow-up. The Australia/New Zealand Fontan registry
283 showed on average under 40 in-hospital days spent during the first year of life and under 10
284 days/year up to 18 years of age, but with limited details on how these means can be interpreted in
285 the presence of right skewed data.²⁰ Additionally, both studies focus on survivors of the Fontan
286 procedure and do not differentiate well between inpatient and outpatient care.

287 The current study provides a highly detailed overview of hospital resource utilization in all f-SV
288 patients with at least one cardiac procedure, from a large geographical area, from birth to 18 years
289 of age, regardless of survival status up-to or after the Fontan procedure, and with a differentiation
290 between hospital visit type and cause. We found that time spent in hospital is concentrated during
291 the first two months of life, when the highest mortality also occurs. Recent results have
292 demonstrated improved interstage survival with continuous hospitalization,³⁰ and it could be
293 argued that a trade-off between fewer deaths and more hospital days could be acceptable.

294 Data on care needs beyond the first year of life are limited and difficult to generalise, as they either
295 focus on those who required hospitalizations,^{10,18,31} on Fontan survivors,²⁰ or provide an overall
296 inpatient use up to 10 years of life but without other details.²¹ We found that after the age of 6, at
297 least half the patients only require annual follow-up outpatient visits, with median inpatient days
298 per year as low as 0, a lower burden than what was previously reported in older adults.^{5,31} This is
299 reassuring, since hospitalizations for non-cardiac causes in f-SV come with high mortality and
300 healthcare costs.^{9,18}

301 There remains considerable right skewness in terms of resource utilization needs, pointing to a
302 subset of individuals with worse outcomes, driving the high mean values like those previously
303 reported.^{20,21} The current analysis of factors associated with hospital resource utilization during
304 the initial f-SV palliation builds on previous studies which identified right ventricle anatomy, low
305 weight or critical preoperative status as predictors of various measures of hospital resource
306 utilization, though with smaller sample sizes of 202 to 409 patients,^{8,16} as well as a comprehensive
307 analysis of mortality-associated risk factors using the LAUNCHES dataset.⁶ The analysis of risk
308 factors accounted for possible center variation, but in a centralised system such as that present in
309 the NHS, the impact of individual center practice on outcomes is low, as recently shown in a study
310 by our group.⁶ With further independent replication, comparisons to other forms of CHD and
311 measures of discrimination and calibration, these factors could identify subgroups with differing
312 requirements for monitoring and follow-up. These in turn could be targets for specific research
313 with the aim of implementing quality improvements to address the difference in outcomes
314 demonstrated here.

315 *Informing patients and families*

316 In the era of antenatal diagnosis of CHD, discussions on expected outcomes are crucial and require
317 detailed information. Parents' concerns go beyond survival into how their daily life and that of
318 their children will be affected, among other things, by time spent in the hospital.^{22,27}

319 A diagnosis of f-SV entails a well described early risk of death but information on other aspects of
320 later care is scarce. The current data aims to provide a tool to inform the parents and later the
321 patients themselves. Expectations can be managed based on hard-evidence resulting from a
322 national registry, with figures by age intervals, taking into consideration factors we identified to
323 be associated with fewer days-at-home.

324 ***Limitations***

325 This is an analysis of linked national registries, and thus it is limited by data availability but has
326 the advantage of external validation. Analyses were limited to subsets with complete data, leading
327 to exclusions of some patients from certain analyses, preferred to missing data imputation to avoid
328 misclassification. Patient selection was procedure-based excluding cases of neonatal
329 compassionate care or deaths before any intervention. By allocating 0 days-at-home on deaths in
330 the days-at-home analysis, more weight is given to these cases in the quantile regression, although
331 this is mitigated by the fact that they died predominately in-hospital. When comparing hospital
332 resource utilization at different age intervals, survivor bias is inherent, with earlier deaths reflecting
333 the most severe cases. Patients living in Wales might have underestimation of late hospital resource
334 utilization, as non-cardiac local follow-up might not be accurately captured, although these are a
335 small percentage of the total group. There were some ambiguous care episodes (spells), not
336 classifiable as cardiac or non-cardiac, where diagnoses were not noted, and instead a general term
337 "follow-up" was used, reported separately. The analysis on factors associated with health resource
338 utilization was exploratory, and as such causality should not be inferred from it.

339 Conclusion

340 This study offers a detailed description of length and type of hospital stay from birth to 18 years
341 and patient-level factors associated with hospital resource utilization, to aid in clinical decision
342 making and counselling. Most of the hospital stay and resource utilization are concentrated in the
343 first two months of life, and decrease substantially over time, transitioning from a predominately
344 inpatient care to mostly outpatient visits. There are those with poor outcomes, including non-
345 survivors, and those with high resource utilization persisting until the age of 18 years old, where
346 identifying modifiable factors could improve quality of care and help narrow the gap in outcomes.

347 Acknowledgements

348 Data has been provided by the Healthcare Quality Improvement Partnership from the Paediatric
349 Intensive Care Audit Network (PICANet) Programme. Data was provided by the Healthcare
350 Quality Improvement Partnership from the National Congenital Heart Disease Audit (NCHDA
351 Programme) (data controller now Arden & GEM). Hospital Episode Statistics (HES) data, and life
352 status data from the Office for National Statistics (ONS) was provided by National Health Service
353 (NHS) Digital.

354 **REFERENCES**

- 355 1. Khairy P, Poirier N, Mercier LA. Univentricular heart. *Circulation*. 2007;115(6):800-812.
356 doi:10.1161/CIRCULATIONAHA.105.592378
- 357 2. Rogers L, Pagel C, Sullivan ID, et al. Interventions and outcomes in children with
358 hypoplastic left heart syndrome born in England and Wales between 2000 and 2015 based
359 on the national congenital heart disease audit. *Circulation*. 2017;136(18):1765-1767.
360 doi:10.1161/CIRCULATIONAHA.117.028784
- 361 3. Hadjicosta E, Franklin R, Seale A, et al. Cohort study of intervened functionally
362 univentricular heart in England and Wales (2000–2018). *Heart*. 2021;0:heartjnl-2021-
363 319677. doi:10.1136/heartjnl-2021-319677
- 364 4. McHugh KE, Hillman DG, Gurka MJ, Gutgesell HP. Three-stage palliation of hypoplastic
365 left heart syndrome in the university healthSystem consortium. *Congenit Heart Dis*.
366 2010;5(1):8-15. doi:10.1111/j.1747-0803.2009.00367.x
- 367 5. Dennis M, Zannino D, du Plessis K, et al. Clinical Outcomes in Adolescents and Adults
368 After the Fontan Procedure. *J Am Coll Cardiol*. 2018;71(9):1009-1017.
369 doi:10.1016/j.jacc.2017.12.054
- 370 6. Brown KL, Huang Q, Hadjicosta E, et al. Journal Pre-proof Long-term survival and centre-
371 volume, for functionally single ventricle congenital heart disease in England and Wales.
372 Published online 2022. doi:10.1016/j.jtcvs.2022.11.018
- 373 7. Thomas ID, Seckeler MD. Resource utilization for noncardiac admissions in pediatric
374 patients with single ventricle disease. *American Journal of Cardiology*. 2016;117(10):1661-
375 1666. doi:10.1016/j.amjcard.2016.02.043
- 376 8. Zielonka B, Snarr BS, Liu MY, et al. Resource Utilization for Prenatally Diagnosed Single-
377 Ventricle Cardiac Defects: A Philadelphia Fetus-to-Fontan Cohort Study. *J Am Heart*
378 *Assoc*. 2019;8(11). doi:10.1161/JAHA.118.011284
- 379 9. Collins RT, Doshi P, Onukwube J, Fram RY, Robbins JM. Risk Factors for Increased
380 Hospital Resource Utilization and In-Hospital Mortality in Adults With Single Ventricle
381 Congenital Heart Disease. *American Journal of Cardiology*. 2016;118(3):453-462.
382 doi:10.1016/j.amjcard.2016.05.020

- 383 10. Collins RT, Fram RY, Tang X, Robbins JM, Sutton MSJ. Impact of anatomical subtype and
384 medical comorbidities on hospitalizations in adults with single ventricle congenital heart
385 disease. *Int J Cardiol.* 2013;168(5):4596-4601. doi:10.1016/j.ijcard.2013.07.164
- 386 11. Mishra V, Lindberg H, Seem E, et al. A comparison of hospital costs with reimbursement
387 received for patients undergoing the Norwood procedure for hypoplasia of the left heart.
388 *Cardiol Young.* 2005;15(5):493-497. doi:10.1017/S1047951105001368
- 389 12. Schidlow DN, Anderson JB, Klitzner TS, et al. Variation in Interstage Outpatient Care after
390 the Norwood Procedure: A Report from the Joint Council on Congenital Heart Disease
391 National Quality Improvement Collaborative. *Congenit Heart Dis.* 2011;6(2):98-107.
392 doi:10.1111/j.1747-0803.2011.00509.x
- 393 13. Hill GD, Rudd NA, Ghanayem NS, Hehir DA, Bartz PJ. Center Variability in Timing of
394 Stage 2 Palliation and Association with Interstage Mortality: A Report from the National
395 Pediatric Cardiology Quality Improvement Collaborative. *Pediatr Cardiol.*
396 2016;37(8):1516-1524. doi:10.1007/s00246-016-1465-9
- 397 14. Anderson JB, Beekman RH, Border WL, et al. Lower weight-for-age z score adversely
398 affects hospital length of stay after the bidirectional Glenn procedure in 100 infants with a
399 single ventricle. *Journal of Thoracic and Cardiovascular Surgery.* 2009;138(2):397-404.
400 doi:10.1016/j.jtcvs.2009.02.033
- 401 15. Dean PN, Hillman DG, McHugh KE, Gutgesell HP. Inpatient costs and charges for surgical
402 treatment of hypoplastic left heart syndrome. *Pediatrics.* 2011;128(5):e1181-e1186.
403 doi:10.1542/peds.2010-3742
- 404 16. Baker-Smith CM, Wilhelm CM, Neish SR, et al. Predictors of prolonged length of intensive
405 care unit stay after stage i palliation: A report from the National Pediatric Cardiology
406 Quality Improvement Collaborative. *Pediatr Cardiol.* 2014;35(3):431-440.
407 doi:10.1007/s00246-013-0797-y
- 408 17. Baker-Smith CM, Goldberg SW, Rosenthal GL. Predictors of Prolonged Hospital Length
409 of Stay Following Stage II Palliation of Hypoplastic Left Heart Syndrome (and Variants):
410 Analysis of the National Pediatric Cardiology Quality Improvement Collaborative (NPC-
411 QIC) Database. *Pediatr Cardiol.* 2015;36(8):1630-1641. doi:10.1007/s00246-015-1208-3
- 412 18. Huang L, Dalziel KM, Schilling C, et al. Hospital costs and cost implications of co-morbid
413 conditions for patients with single ventricle in the period through to Fontan completion. *Int*
414 *J Cardiol.* 2017;240:178-182. doi:10.1016/j.ijcard.2017.04.056

- 415 19. Danford DA, Karels Q, Kulkarni A, Hussain A, Xiao Y, Kutty S. Mortality-related resource
416 utilization in the inpatient care of hypoplastic left heart syndrome. *Orphanet J Rare Dis.*
417 2015;10(1). doi:10.1186/s13023-015-0355-1
- 418 20. Huang L, Schilling C, Dalziel KM, et al. Hospital Inpatient Costs for Single Ventricle
419 Patients Surviving the Fontan Procedure. *American Journal of Cardiology.*
420 2017;120(3):467-472. doi:10.1016/j.amjcard.2017.04.049
- 421 21. Pinto NM, Waitzman N, Nelson R, Minich LLA, Krikov S, Botto LD. Early Childhood
422 Inpatient Costs of Critical Congenital Heart Disease. *Journal of Pediatrics.* 2018;203:371-
423 379.e7. doi:10.1016/j.jpeds.2018.07.060
- 424 22. du Plessis K, Peters R, King I, et al. “Will she live a long happy life?” Parents’ concerns for
425 their children with Fontan circulation. *IJC Heart and Vasculature.* 2018;18:65-70.
426 doi:10.1016/j.ijcha.2018.02.008
- 427 23. Espuny Pujol F, Pagel C, Brown KL, et al. Linkage of National Congenital Heart Disease
428 Audit data to hospital, critical care and mortality national data sets to enable research
429 focused on quality improvement. *BMJ Open.* 2022;12(5):e057343. doi:10.1136/bmjopen-
430 2021-057343
- 431 24. Franklin RCG, Béland MJ, Colan SD, et al. Nomenclature for congenital and paediatric
432 cardiac disease: The International Paediatric and Congenital Cardiac Code (IPCCC) and the
433 Eleventh Iteration of the International Classification of Diseases (ICD-11). In: *Cardiology*
434 *in the Young.* Vol 27. *Cardiol Young*; 2017:1872-1938. doi:10.1017/S1047951117002244
- 435 25. Rogers L, Brown KL, Franklin RC, et al. Improving Risk Adjustment for Mortality After
436 Pediatric Cardiac Surgery: The UK PRAiS2 Model. *Annals of Thoracic Surgery.*
437 2017;104(1):211-219. doi:10.1016/j.athoracsur.2016.12.014
- 438 26. Myles PS, Shulman MA, Heritier S, et al. Validation of days at home as an outcome measure
439 after surgery: A prospective cohort study in Australia. *BMJ Open.* 2017;7(8):e015828.
440 doi:10.1136/bmjopen-2017-015828
- 441 27. Brown KL, Pagel C, Ridout D, et al. What are the important morbidities associated with
442 paediatric cardiac surgery? A mixed methods study. *BMJ Open.* 2019;9(9):e028533.
443 doi:10.1136/bmjopen-2018-028533
- 444 28. Parente PMDC, Santos Silva JMC. Quantile Regression with Clustered Data. *J Econom*
445 *Method.* 2016;5(1):1-15. doi:10.1515/jem-2014-0011

- 446 29. Abadie A, Athey S, Imbens G, Wooldridge J. When Should You Adjust Standard Errors for
447 Clustering? Published online November 13, 2017. doi:10.3386/W24003
- 448 30. Michielon G, Disalvo G, Fraisse A, et al. In-hospital interstage improves interstage survival
449 after the Norwood stage 1 operation. *European Journal of Cardio-thoracic Surgery*.
450 2020;57(6):1113-1121. doi:10.1093/ejcts/ezaa074
- 451 31. Thomas ID, Seckeler MD. Resource utilization for noncardiac admissions in pediatric
452 patients with single ventricle disease. *American Journal of Cardiology*. 2016;117(10):1661-
453 1666. doi:10.1016/j.amjcard.2016.02.043

454

455

456 TABLES

Table 1. Demographic, clinical, and procedural data in all functional single ventricle (f-SV) patients (n=3,037) and those undergoing the Fontan operation (n=1,409).

Demographic and anthropometric	All patients	Fontan subgroup
Age at first procedure/Fontan, (median, IQR)	6 (3-28) (days)*	4.5 (3.7-5.7) (years)†
Weight, kg (median, IQR)‡	3.2 (2.9-3.8)*	16 (14.4-18.5)†
Low weight <2.5 kg at first procedure, n (%)‡	293 (9.7)	103 (7.3)
Male, n (%)	1,784 (58.7)	847 (60.1)
Anatomical subtype, n (%)		
Hypoplastic left heart syndrome (HLHS)	1,129 (37.2)	404 (28.7)
Single ventricle with isomerism	222 (7.3)	90 (6.4)
Double inlet left ventricle	303 (10.0)	189 (13.4)
Tricuspid atresia	390 (12.8)	224 (15.9)
Non-HLHS Mitral atresia	102 (3.4)	52 (3.7)
Unbalanced atrioventricular septal defect	223 (7.3)	79 (5.6)
Pulmonary atresia	168 (5.5)	95 (6.7)
All other single ventricle	500 (16.5)	276 (19.6)
Preoperative clinical risk factors, n (%)§		
Antenatal diagnosis	1,270 (85.5)	364 (85.3)

Preterm birth	122 (8.2)	23 (5.4)
Congenital non-cardiac comorbidity	296 (19.9)	65 (15.2)
Additional cardiac risk factors	120 (8.1)#	15 (3.5)†
Acquired comorbidity	115 (7.8)*	52 (12.2)† 48 (11.2)**
Severity of illness marker	302 (20.3)*	6 (1.4)† 84 (19.7)**
Procedure related factors		
Stage 1 performed, n (%)	2,648 (87.2)	1,201 (85.2)
Stage 1 subtype, n (%)		
Only Norwood	1,276 (42.0)	522 (37.1)
Only hybrid HLHS	89 (2.9)	11 (0.8)
Coarctation/interrupted arch repair	147 (4.8)	81 (5.8)
Securing pulmonary blood flow	785 (25.9)	413 (29.3)
Protecting the pulmonary vascular bed	337 (11.1)	173 (12.3)
Hybrid HLHS followed by Norwood	14 (0.5)	1 (0.1)
Stage 2 performed, n (%)	2,184 (71.9)	1,357 (96.3)
Off-pathway procedure, n (%)	1,495 (49.2)	825 (58.6)
Procedure era, n (%)		

2000-2005	867 (28.5)*	98 (7.0)†
2006-2010	1,030 (33.9)*	476 (33.8)†
2011-2016	1,140 (37.5)*	835 (59.2)†
<p>IQR, interquartile range; first procedure is always first cardiac procedure</p> <p>* at first procedure</p> <p>† at Fontan procedure</p> <p>‡ Missing in n=61 overall and n=45 Fontan patients</p> <p>§ Reported n=1,485 overall and n=427 Fontan patients (birth since 2009 or later)</p> <p> Missing in n=6 overall and n=1 Fontan patients</p> <p># during 1st year of life</p> <p>** before Fontan procedure</p>		

457

458

Table 2. Hospital resource utilization (number of inpatients, ICU and ECMO days) in the first year of life for functionally single ventricle (f-SV) patients, overall, in non-survivors and in relation to Stage 1 and Stage 2 procedure episodes (spells).

Number of inpatient days*				
	Mean	Median (IQR)	Range	Number of patients
Overall	62.6	43 (25-77)	(0-365)	2,819
Non-survivors	55.3	34 (14-74)	(1-321)	576
Stage 1 related	37.2	22 (11-42)	(0-365)	2,819
Stage 2 related	10.2	1 (0-11)	(0-305)	2,819
Number of ICU days†				
Overall	18.2	10 (4-20)	(0-365)	2,726
Non-survivors	23.7	14 (6-30)	(0-226)	611
Stage 1 related	13.6	7 (2-14)	(0-365)	2,726
Stage 2 related	2.7	0 (0-2)	(0-212)	2,726
Number of ECMO days†				
Overall	1.0	0 (0-0)	(0-121)	2,726
Non-survivors	2.3	0 (0-0)	(0-110)	611
Stage 1 related	0.8	0 (0-0)	(0-121)	2,726
Stage 2 related	0.2	0 (0-0)	(0-78)	2,726

* n=190 patients were not linked to HES and n=28 patients have inpatient episodes (spells) in the 1st of their life without a discharge date, excluded.

† only in patients born in April 2002 or later, due to PICANet censoring data of patients once they reach 18 years of age. Also excluded are n=30 patients were not linked to PICANet for other reasons.

Table 3. Factors associated with days spent at home and in the intensive care unit (ICU) in the first year of life in functionally single ventricle (f-SV) patients

	Days-at-home (1 st year of life)		Days in ICU (1 st year of life)	
	Univariate coefficient (95% CI)	Adjusted coefficient (95% CI)	Univariate coefficient (95% CI)	Adjusted coefficient (95% CI)
Clinical subgroup				
Hypoplastic left heart syndrome	-80 (-128.4;-31.6)**	-54.7 (-92.7;-16.7)**	9 (5.1;12.9)***	7.8 (3.4;12.2)***
Single ventricle with isomerism	-11 (-26.3;4.3)	-4.1 (-17.7;9.6)	0 (-2.3;2.3)	0.1 (-2.5;2.6)
Double inlet left ventricle	7 (-21.5;35.5)	2.5 (-14.6;19.6)	-1 (-3.4;1.4)	-0.1 (-2.9;2.6)
Tricuspid atresia	Reference	Reference	Reference	Reference
Mitral atresia	-71 (-105.7;-36.3)***	-55.4 (-96.5;-14.3)**	7 (2.0;11.9)**	5.2 (-0.2;10.6)^
Unbalanced atrioventricular septal defect	-81 (-138.4;-23.6)**	-65.1 (-132.2;2.0)^	6.2 (0.4;12.1)*	3.0 (-1.2;7.3)
Pulmonary Atresia	-9 (-33.7;15.7)	-4.9 (-20.5;10.8)	1 (-1.7;3.7)	0.1 (-2.7;2.8)

All other single ventricle	5 (-16.4;26.4)	-2.1 (-16.2;11.9)	-2 (-4.2;0.2) [^]	-1.2 (-4.2;1.8)
Male gender	4 (-9.4;17.4)	3.4 (-5.0;11.8)	1 (-1.4;3.4)	0.2 (-1.9;2.2)
Congenital comorbidity	-55 (-74.9;-35.1) ^{***}	-31.5 (-46.4;-16.7) ^{***}	3 (0.7;5.3) [*]	2.0 (-0.1;4.2) [^]
Preterm birth	-75 (-95.3;-54.7) ^{***}	-52.5 (-82.4;-22.5) ^{**}	4 (-2.0;10.0)	1.4 (-1.1;3.9)
Antenatal diagnosis	-13 (-20.8;-5.2) ^{**}	-11.7 (-23.0;-0.4) [*]	-2 (-4.8;0.8)	0.2 (-2.0;2.3)
Additional cardiac risk (1 st year of life)	-100 (-134.7;-65.2) ^{***}	-52.8 (-97.0;-8.5) [*]	15 (9.7;20.3) ^{***}	9.6 (2.2;16.9) [*]
Acquired comorbidity (1 st procedure)	-112 (-177.0;-47.0) ^{**}	-74.0 (-114.4;-33.5) ^{***}	10 (0.3;19.7) [*]	4.0 (-2.9;10.9)
Severity of illness marker (1 st procedure)	-56 (-80.2;-31.8) ^{***}	-26.4 (-37.1;-15.8) ^{***}	11 (6.7;15.3) ^{***}	7.0 (2.2;11.7) ^{**}
Low weight <2.5 kg (1 st procedure)	-140 (-238.7; -41.3) ^{**}	-67.4 (-167.8;33.0)	12 (5.2;18.8) ^{***}	7.7 (3.4;12.1) ^{**}
Age in months (1 st procedure)	2.1 (1.7;2.5) ^{***}	1.4 (0.8;2.0) ^{***}	-0.5 (-0.7;-0.2) ^{***}	-0.3 (-0.5;-0.2) ^{***}
<p>Quantile (at median) analysis performed for patients born in April 2009 or later (n=1,485, exclusions below).</p> <p>N=1 (weight missing) and n=6 (antenatal diagnosis missing) excluded from all regression analysis; n=44 excluded from days-at-home analysis (not linked to HES, censored in HES in 1st year of life or have inpatient episodes (spells) without discharge age in 1st year of life); n=117 excluded from the days in ICU analysis (not linked to PICANet or censored in PICANet in 1st year of life).</p>				

If no cardiac procedure in 1st year, related comorbidities marked as “no”.

Coefficients 95% confidence intervals (CI) are from quantile regression at median.

Significance level (p-value): 0.1[^], 0.05*, 0.01**, 0.001***

460

Journal Pre-proof

461 **FIGURES LEGENDS**

462

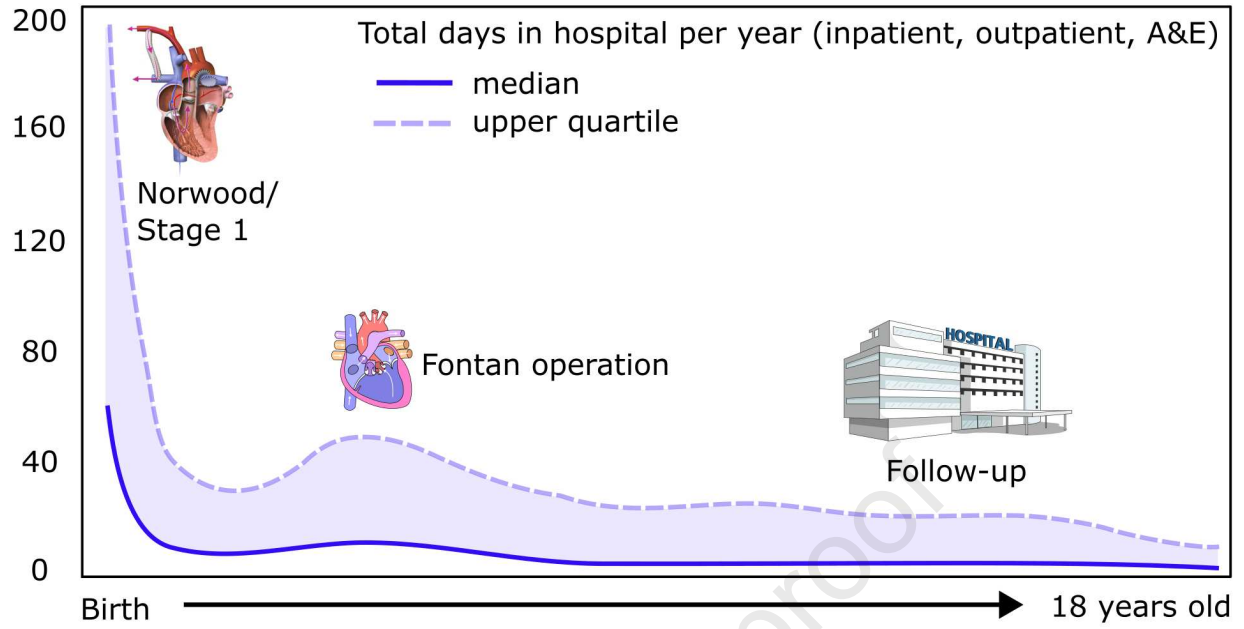
463 **Figure 1.** Flowchart of functionally single ventricle (f-SV) study population inclusion and exclusion steps and classifications.
464 Identification of hypoplastic left heart syndrome (HLHS) and non-HLHS patients, and classification into diagnosis types was done using
465 an algorithm described previously^{2,3} and further in the Supplemental Materials. NHS, National Health System.

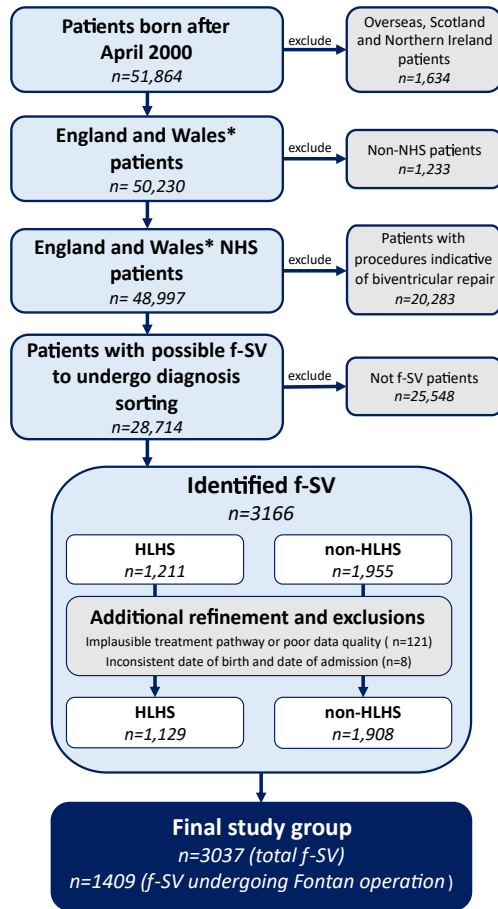
466 **Figure 2.** Hospital resource utilization in patients with functionally single ventricle (f-SV) from birth to one year of life. Reported as
467 median number of days/month, within 1-month age intervals. **Panel A.** Total days spent in the hospital (inpatient, outpatient and A&E
468 without admission, cardiac and non-cardiac/ambiguous). **Panel B.** Number of inpatient days (cardiac and non-cardiac/ambiguous).
469 **Panel C.** Days in intensive care unit (ICU). **Panel D.** Number of outpatient days (cardiac and non-cardiac/ambiguous). All panels show
470 the median (horizontal black line line), inter-quartile range (coloured solid bars) and 1.5x inter-quartile range (dotted vertical lines),
471 while outliers outside these limits are not shown. Corresponding numerical values, including means, number of death and censoring in
472 each age intervals are detailed in Supplemental Tables 2-5. ICU data is available for patients who born from 2002 onwards. Patients
473 were included in each consecutive age interval if they had data (linked and available) and were alive or not censored in the lower age
474 limit.

475 **Figure 3.** Hospital resource utilization in patients with single ventricle from birth to 18 years of life. Reported as median number of
476 days/year, within 1- year age intervals. **Panel A.** Total days spent in the hospital (inpatient, outpatient and A&E without admission,

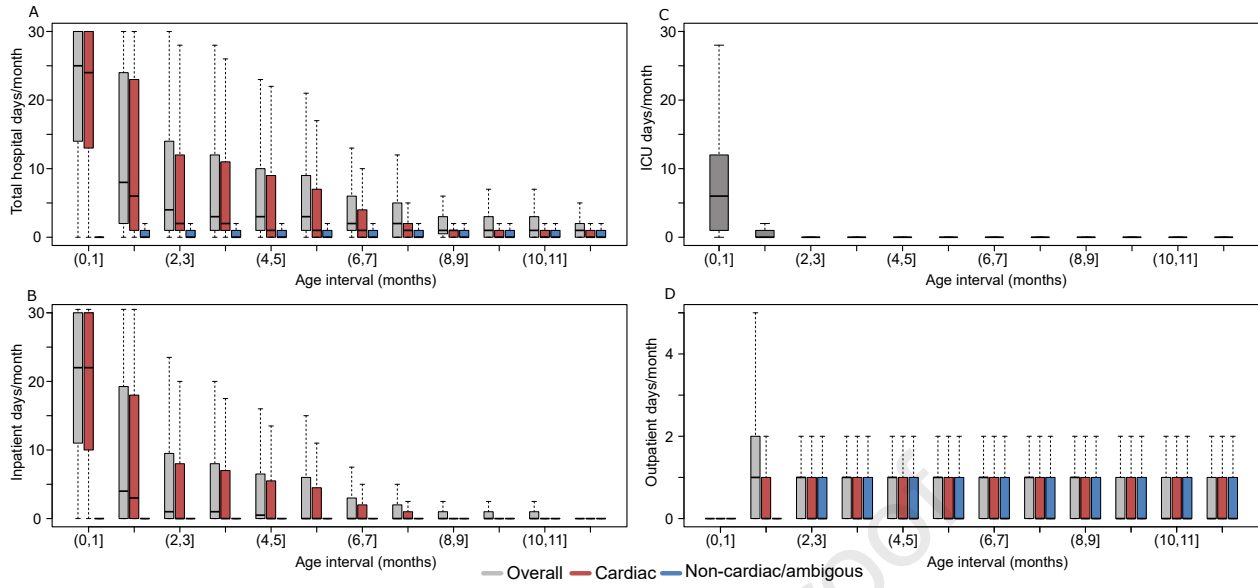
477 cardiac and non-cardiac/ambiguous). **Panel B.** Number of inpatient days (cardiac and non-cardiac/ambiguous). **Panel C.** Days in
478 intensive care unit (ICU). **Panel D.** Number of outpatient days (cardiac and non-cardiac/ambiguous). All panels show the median
479 (horizontal black line line), inter-quartile range (coloured solid bars bars) and 1.5x inter-quartile range (dotted vertical lines). Inset panels
480 show years 1-18 of life, with adjusted scale, after excluding the first year. Outliers outside these limits are not shown. Corresponding
481 numerical values, including means, number of death and censoring in each age intervals are detailed in Supplemental Tables 6-9. ICU
482 data is available for patients who born from 2002 onwards. Patients were included in each consecutive age interval if they had data
483 (linked and available) and were alive or not censored in the lower age limit.

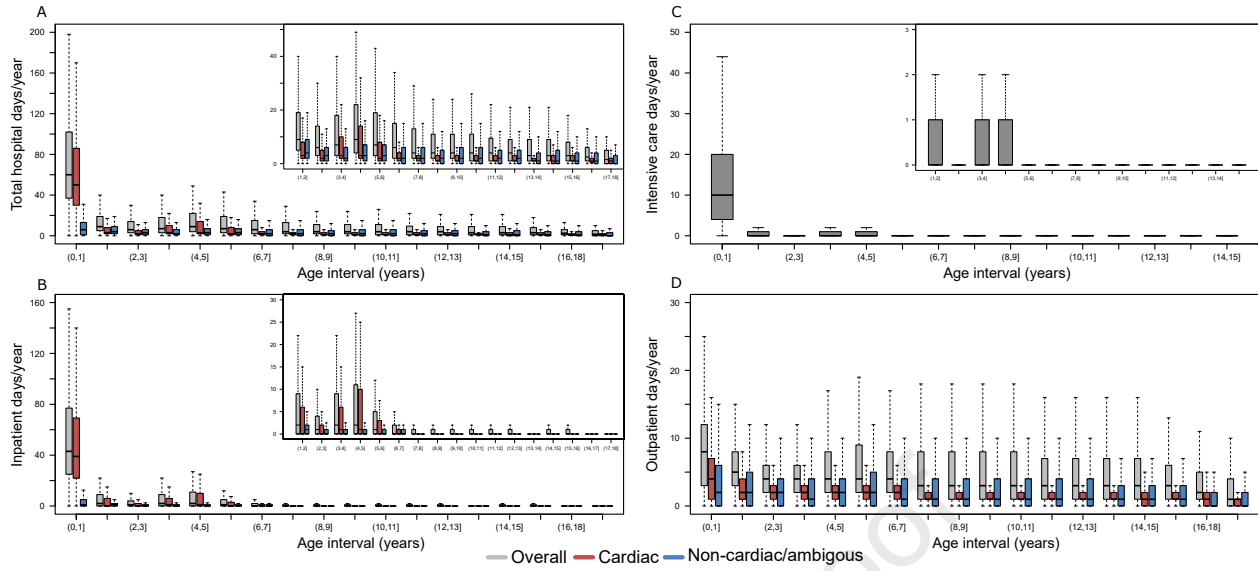
484 **Graphical abstract/Figure 4.** Understanding single ventricle resource utilization and at-risk populations can improve decision making,
485 patient care and counselling.





*and Crown Dependencies



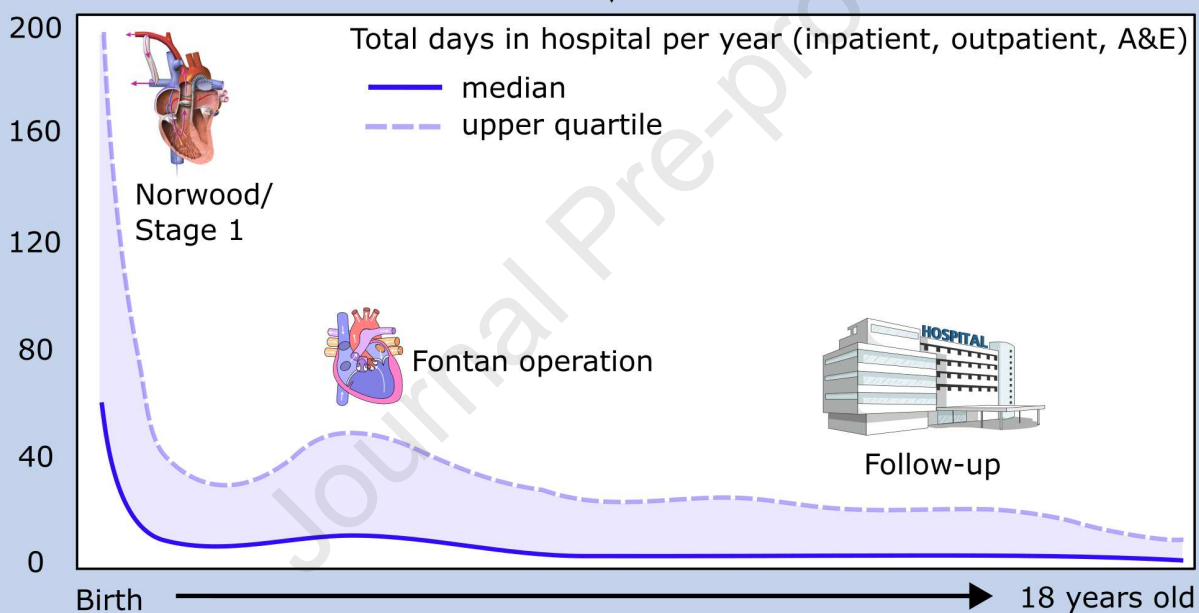
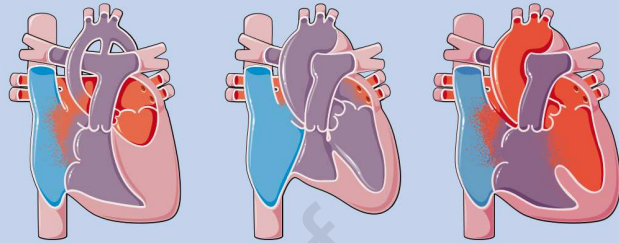


Journal Pre-proof

Hospital resource utilization in single ventricle patients

 **LAUNCHES project** 3038 single ventricle patients
4 national datasets

NCHDA - Cardiac procedures
PicaNet - Intensive care
ONS - Life status
HES - Hospital visits



First year of life critical -> high mortality
Post-Fontan -> most need only annual check-ups
High-risk groups maintain high resource utilization

Understanding hospital resource utilization can:

- ➔ Improve risk stratification and interstage surveillance
- ➔ Improve distribution of hospital resources
- ➔ Improve family and patient counselling

Journal Pre-proof

SUPPLEMENTAL MATERIALS

Dorobantu et al: Hospital resource utilization in a national cohort of functionally single ventricle patients undergoing surgical treatment

SUPPLEMENTARY METHODS

Data management

Each dataset has a different start date and end date (Supplemental Table S1). This results in each analysis were performed for periods when all required datasets overlapped, which is mentioned at each respective step. In addition, when describing hospital resource utilization, left truncation occurs where data on days spent in hospital/outpatient/A&E were available only from a given age onwards. In the descriptive analysis, patients were included in age intervals where there were data available for the respective interval. Some patients present in the lower age limit of age intervals but die or are censored before the upper age limit and did not have complete hospital data utilization (right censoring). These age intervals were included in the descriptive analysis.

Before 2009, preoperative risk factors were less completely collected in NCHDA dataset. For this reason, the univariable and multivariable analysis of factors associated with hospital resource utilization only included data from 2009 onwards, and their descriptive analysis also reflects this.

In addition, PICANet employs an internal censoring mechanism, where entries of patients older than 18 years old can no longer be identified, so those born before 2002 were not linked.

Patient care spells definition

All clinical data were organised into patient care episodes or “spells”, containing patient events separated by no more than 24 hours.²⁴ A spell encompasses a single overall health care

interaction which can range from a single outpatient appointment or a prolonged inpatient stay. A spell was considered cardiac if it contains an NCHDA procedure or at least one cardiac diagnosis or healthcare resource group code for a HES inpatient stay, outpatient or A&E visit.

Patient selection and classification

The inclusion and exclusion steps are summarized in Figure 1. All patients undergoing a cardiac procedure from the NCHDA audit, born after April 2000 (to ensure procedural history completeness), were considered. To allow for accurate follow-up only those from England and Wales and treated within the National Health Service were included.

Cardiac diagnosis and procedure codes²⁵ were used to identify patients with f-SV using a hierarchical series of steps: firstly, those undergoing biventricular repair were excluded;⁴ next, a stepwise algorithm was used to identify HLHS³ and non-HLHS subtypes⁵ (details in Supplemental Methods). Eight hierarchical diagnosis subgroups were created having at least 100 patients: HLHS, f-SV with any type of atrial isomerism, double inlet left ventricle (DILV), tricuspid atresia, unbalanced common atrioventricular canal defect (uAVSD), mitral atresia without HLHS, pulmonary atresia without other complex features but with a functionally SV circulation and a remaining 'all other f-SV'.

Data collection and management

The following data were extracted from the available datasets (details by year and data source in Supplemental Table S1): *Data related to patients:* age and weight at first cardiac procedure and at Fontan operation, gender, anatomical diagnosis subtype^{3,4} and preoperative risk factors as used by the UK Partial Risk Adjustment in Surgery model for 30-day mortality (2009 and after).²⁶ Based on weight-for-age Z scores,²⁷ those records with a Z score > 5 (abnormally high weight) were marked as missing (considered a data entry error), while records with Z score

values < -8 (abnormally low weight) were treated as missing only after being reviewed by the study team.

Data related to procedures: year of procedure, type of stage 1 procedure,⁴ whether a stage 2 procedure is performed, whether a Fontan procedure is performed, number of off-pathway procedures performed,^{3,4} total cardiopulmonary bypass (CPB) time in the 1st year of life (as a surrogate for number and complexity of cumulated surgical procedures), Fontan operation cross clamp duration.

Outcomes

Hospital resource utilization outcomes: 1. days in hospital: total (inpatient, outpatient and A&E), inpatient, outpatient, and ICU days during the first year of life (1-month age intervals) 2. days in hospital: total (inpatient, outpatient and A&E), inpatient, outpatient and ICU days from 0-18 years (one year age intervals) 3. days-at-home during the 1st year of life 4. Inpatient spell length and ICU days post Fontan procedure 5. Inpatient days and days-at-home in the first 6 months post Fontan procedure. Spell length and ICU length of less than one day are counted as one day.

Vital status: Patient life status was provided at the point of hospital discharge by NCHDA for each cardiac procedure and at date of extract by the Office of National Statistics (national death registry data). Death recorded in either NCHDA or ONS was counted as a death, but if death was recorded in both, date of death from NCHDA was used (if there was disagreement). Any patients that were discharged alive in NCHDA and who have missing life status with ONS were deemed lost to follow up and were censored at their last known live discharge age.

Statistical Analyses

Frequencies are reported as numbers and proportions, and continuous variables as median with inter-quartile range (IQR) and minimum-maximum range, as well as means in Supplemental Tables S2-S9. Any missing values affecting the denominator or leading to exclusions from analyses are detailed where relevant and were not imputed due to high level of data completeness.

Hospital resource utilization (first year of life and 0-18 years)

Median (IQR) days in hospital/ICU were counted within each age interval. Intervals of one month were used for the first year of life and 1-year age intervals were used for 2-18 years. The numbers of patients who died or were right-censored within each interval are reported (Tables S2-S9).

Factors associated with days-at-home and ICU time analysis

To investigate factors associated with hospital resource utilization, four outcomes of interest were used: days-at-home and days in ICU during first year of life, postoperative ICU days during the Fontan spell of care, and days-at-home within 6-months post-Fontan. Patients who died before year 1/within 6-months of a Fontan procedure were assigned a value of zero days-at-home as the worst outcome.^{27,28} Patients censored in HES/PICANet during the first year of life (or within six-months of Fontan procedure) were excluded from the respective days-at-home/days in ICU analyses.

Quantile regression was carried out to explore factors associated with the median of each outcome of interest, as the data are highly skewed.²⁹ Effects are presented as univariable and adjusted coefficients and 95% confidence intervals (CI). Clustered standard errors were computed for all models to allow for intra-centre correlation.^{30,31}

Clinically relevant factors were selected as candidate explanatory variables in the models. For the models focusing on the first year of life, variables were assigned per patient (clinical diagnosis, gender, preterm birth, congenital non-cardiac comorbidity, documented antenatal diagnosis, additional cardiac risk factor at any time during first year) and for first procedure only (age, low weight < 2.5 kg, acquired comorbidity, severity of illness marker). For the models focusing on the post-Fontan period, variables were assigned at patient level (clinical subgroup, subtype of Stage 1, gender, preterm birth, congenital non-cardiac comorbidity, ICU stay during first year of life, days-at-home during first year of life), at the time of the Fontan procedure (age, weight, weight-for-age Z score < -2, acquired comorbidity, cross clamp time) and at any record before the Fontan procedure (acquired comorbidity, severity of illness marker, total CPB in first year of life). The adjusted models include all candidate variables for the models focusing on the first year of life, and those with a univariable $p \leq 0.1$ for the models on post-Fontan procedure period, given that there were few significant variables in the latter.

All statistical analyses were performed using STATA/SE 17.0 (StataCorp LLC, College Station, Texas, USA), and figures created using R version 4.1.2 (R Foundation for Statistical Computing, Vienna, Austria).

Stepwise algorithm to identify hypoplastic left heart syndrome (HLHS) and non-HLHS patients

All diagnosis codes are European Paediatric Cardiac Codes.

HLHS patients¹

Step 1: Identify HLHS patients

Patients with at least one of the following diagnosis codes:

- 01.01.09: HLHS
- 09.15.03: Aortic atresia
- 06.02.01: Mitral atresia
- 07.08.42: Ventricular imbalance: dominant right ventricle and HLV
- 07.07.00: Left ventricular hypoplasia

OR procedure codes consistent with Stage 1 procedure for HLHS:

- 12.10.00: Norwood type procedure
- 12.09.03: Damus-Kaye-Stansel type procedure: pulmonary trunk to aorta end/side anastomosis **AND** at least one of the following procedure codes indicating Arterial Shunt:
 - 12.31.03: Modified R Blalock shunt
 - 12.31.04: Modified L Blalock shunt
 - 12.31.06: Central systemic-PA interposition shunt
 - 12.31.46: Modified Blalock shunt
 - 12.31.30: Systemic-to-pulmonary arterial shunt procedure

OR procedure codes consistent with stage 1 or stage 2 hybrid for HLHS:

- 12.14.19: Application of right & left pulmonary arterial bands and 12.10.14: stent placement in arterial duct within 4 weeks.
- 12.10.04: Application of bilateral pulmonary arterial bands & transcatheter placement of stent in arterial duct
- 12.20.20: Hypoplastic left heart syndrome hybrid approach (transcatheter & surgery): stage 1
- 12.20.21: Hypoplastic left heart syndrome hybrid strategy (transcatheter & surgery)

- 12.20.22: Hypoplastic left heart syndrome hybrid approach (transcatheter & surgery) 'stage 2': aortopulmonary amalgamation + superior cavopulmonary anastomosis(es) + debanding of pulmonary arteries
- 12.20.23: Hypoplastic left heart syndrome hybrid approach (transcatheter & surgery) 'stage 2': aortopulmonary amalgamation + superior cavopulmonary anastomosis(es) + debanding of pulmonary arteries + arch repair

AND no diagnostic codes indicative of HLHS related malformations from **Methods Appendix 1**

Step 2: Exclusion by treatment pathway not consistent with HLHS

- Removal of patients with only non-contributory or non-cardiac procedures
- Removal of alive patients who had no stage one for HLHS by age three months (allow patients who had pre-pathway then died)
- Removal of BV-like patients who have only pre-pathway with at least one of the codes 123200, 120108, 120103 and 120102. Removal also patients who have pre-pathway with at least one of the codes 120108, 120103 and 120102 and a stage 1/Hybrid (patients who have 123200 pre-pathway and stage1 will NOT be excluded).
- Removal of patients with only pre-pathway and had coarctation procedures (in presence of code 121800, 121801, 121802, 121803, 121810 and 121830).
- Removal of patients who are selected by diagnosis code 070700 only and have no SV procedure and no HLHS procedure.
- Removal of patients who have implausible treatment sequence or too young age at stage 2 (less than 2 months) or stage 3 (less than 6 months).

Non-HLHS patients

These were identified in two stages – Functionally Univentricular Heart (FUH) patients and then other Single Ventricle Patients (other SV)

FUH patients²

Step 1: Identify HLHS related malformation patients

Patients with at least one of the following diagnosis codes:

- 01.01.09: HLHS

- 09.15.03: Aortic atresia
- 06.02.01: Mitral atresia
- 07.08.42: Ventricular imbalance: dominant right ventricle and HLV
- 07.07.00: Left ventricular hypoplasia

AND at least one diagnostic codes indicative of HLHS related malformations from **Methods Appendix 1**

Step 2: Identify FUH patients

Removal of any HLHS patients identified in **Step 1 of HLHS**.

Inclusion of HLHS related malformation patients identified in **Step 1 of FUH**.

Inclusion of patients with at least one of the diagnosis codes from **Methods Appendix 2**

Include patients with SV procedures **AND** at least one of the following diagnosis codes:

- Atrial Isomerism (presence of codes 030104, 030105)
- AVSD (presence of codes 060726, 060709, 060609)
- CCTGA (presence of code 010103)

Step 3: Identify and exclude patients misallocated to the FUH group

Exclusion of patients with at least one of the FUH exclusion diagnostic codes from **Methods Appendix 3**.

Step 4: Exclusion by treatment pathway not consistent with FUH

- Removal of patients with only non-contributory or non-cardiac procedures
- Removal of patients who have implausible treatment sequence or too young age at stage 2 (less than 2 months) or stage 3 (less than 6 months).

Other SV patients

Step 1: Identify and include any remaining other SV patients if

- primary diagnosis as FUH/HLHS

OR

- had SV procedure

Step 2: Identify and include any remaining patients who had

- A Glenn operation: 123111, 123115, 123144, 123145 or 123172 **AND** at least one of the following diagnosis code

- Pulmonary Atresia: 010107, 010106, 090512, 090511 or 010125
- Types of TGA: 010118 or 010501
- CCTGA: 010103
- Ebsteins's malformation of tricuspid valve: 060134
- DORV: 010104, 010117, 010119 or 010140

AND do not have the following procedure code

- Ebstein repair: 120209
- Pulmonary valve or RVOTO opening: 120618,120605, 120600
- Atrial septal defect (ASD) secundum closure with transluminal device: 120106
- Right ventricular outflow tract obstruction relief: 120641
- Ventricular septation procedure: 120901
- 1.5 ventricle repair: superior cavopulmonary (Glenn) anastomosis + right ventricular outflow tract reconstruction: 120619

Step 3: Exclusion by treatment pathway not consistent with other SV

- Removal of patients with only non-contributory or non-cardiac procedures
- Removal of patients who have implausible treatment sequence or too young age at stage 2 (less than 2 months) or stage 3 (less than 6 months).

METHODS APPENDIX 1

03.01.05	Left isomerism ('polysplenia')
03.01.04	Right isomerism ('asplenia')
01.03.09	Atrioventricular and-or ventriculo-arterial connections abnormal
01.01.14	Double inlet atrioventricular connection (double inlet ventricle)
01.04.03	Double inlet right ventricle
01.04.04	Double inlet left ventricle
06.01.01	Tricuspid atresia
01.05.01	Discordant ventriculo-arterial connections (TGA)
01.01.02	Transposition of great arteries (TGA) (concordant atrioventricular & discordant ventriculo-arterial connections) & intact ventricular septum
01.01.03	Congenitally corrected transposition of great arteries (discordant atrioventricular & ventriculo-arterial connections)
01.01.04	Double outlet right ventricle
01.01.17	Double outlet right ventricle: Fallot type (subaortic or doubly committed ventricular septal defect & pulmonary stenosis)
01.01.40	Double outlet right ventricle: subaortic or doubly committed ventricular septal defect without pulmonary stenosis ('VSD type')
01.01.18	Double outlet right ventricle: transposition type (subpulmonary ventricular septal defect)
01.01.19	Double outlet right ventricle: with non-committed ventricular septal defect
01.01.24	Double outlet right ventricle: with intact ventricular septum
01.05.03	Double outlet left ventricle
09.01.01	Common arterial trunk (truncus arteriosus)
09.05.11	Pulmonary atresia
09.05.12	Pulmonary atresia: imperforate valve
01.01.07	Pulmonary atresia + intact ventricular septum
01.01.06	Pulmonary atresia + ventricular septal defect (including Fallot type)
01.01.25	Pulmonary atresia + ventricular septal defect + systemic-to-pulmonary collateral artery(ies) (MAPCA(s))
06.02.09	Straddling mitral valve
06.06.00	Atrioventricular septal defect (AVSD)
06.06.01	Atrioventricular septal defect: isolated atrial component (primum ASD) (partial AVSD)
06.06.08	Atrioventricular septal defect: isolated ventricular component
06.06.10	Atrioventricular septal defect: atrial & (restrictive) ventricular components + separate atrioventricular valve orifices ('intermediate')
06.06.09	Atrioventricular septal defect: atrial & ventricular components with common atrioventricular orifice (complete)
01.01.20	Atrioventricular septal defect and tetralogy of Fallot

06.07.26	Atrioventricular septal defect with ventricular imbalance
06.05.01	Atrioventricular septal defect atrioventricular valvar abnormality
06.05.06	Atrioventricular septal defect atrioventricular valvar regurgitation
07.08.41	Ventricular imbalance: dominant left ventricle + hypoplastic right ventricle
07.02.00	Right ventricular hypoplasia

METHODS APPENDIX 2

01.01.14	Double inlet atrioventricular connection (double inlet ventricle)
01.01.22	Functionally univentricular heart
01.01.24	Double outlet right ventricle with intact ventricular septum
01.04.03	Double inlet right ventricle
01.04.04	Double inlet left ventricle
02.03.05	Solitary ventricle of indeterminate morphology
06.01.01	Tricuspid atresia
06.07.26	Atrioventricular septal defect with ventricular imbalance
07.08.41	Ventricular imbalance: dominant left ventricle + hypoplastic right ventricle
07.08.42	Ventricular imbalance: dominant right ventricle and HLV

METHODS APPENDIX 3

01.01.07	Pulmonary atresia + intact ventricular septum
01.01.25	Pulmonary atresia + ventricular septal defect + systemic-to-pulmonary collateral artery(ies) (MAPCA(s))
01.01.20	Atrioventricular septal defect and Tetralogy of Fallot
09.05.25	Absent pulmonary valve syndrome
09.01.01	Common arterial trunk (truncus arteriosus)

SUPPLEMENTAL TABLES

Table S1. Number of linked records in each dataset by financial year

Financial year	NCHDA	PICANet	A&E	APC	Outpatient
2000	200	0	0	555	0
2001	258	2	0	877	0
2002	271	94	0	1,137	0
2003	379	335	0	1,526	2,499
2004	446	422	0	1,838	3,348
2005	478	513	0	2,195	4,243
2006	592	591	0	2,670	5,614
2007	623	629	618	3,185	7,484
2008	657	624	656	2,957	8,838
2009	724	717	943	3,599	10,878
2010	769	738	1,045	3,833	13,361
2011	798	767	1,116	3,974	14,641
2012	774	687	1,233	3,863	17,490
2013	887	812	1,431	4,144	19,391
2014	993	787	1,707	4,488	24,882
2015	1,256	794	1,901	4,465	27,798
2016	1,136	629	1,870	4,188	26,848
2017	0	0	1,768	3,203	24,825
Total	11,241	9,141	14,288	52,697	212,140

Table S2. Number of days/month spent in hospital (inpatient, outpatient and A&E not admitted) by age intervals during the first year of life
(Numerical data for manuscript Figure 2A)

Age interval (months)	Days/month						Patient number		
	Mean			Median [interquartile range] (min-max range)			Overall	Death (%)	Censoring (%)
	Overall	Cardiac	Non-cardiac/ ambiguous	Overall	Cardiac	Non-cardiac/ ambiguous			
(0,1]	21.3	20.6	0.7	25 [14, 30] (0-30)	24 [13, 30] (0-30)	0 [0, 0] (0-30)	1828	145 (7.9)	0 (0)
(1,2]	12.2	11.2	1	8 [2, 24] (0-30)	6 [1, 23] (0-30)	0 [0, 1] (0-30)	1705	73 (4.3)	0 (0)
(2,3]	9	7.9	1.1	4 [1, 14] (0-30)	2 [1, 12] (0-30)	0 [0, 1] (0-30)	1647	45 (2.7)	0 (0)
(3,4]	8.5	7.5	1.1	3 [1, 12] (0-30)	2 [1, 11] (0-30)	0 [0, 1] (0-30)	1615	42 (2.6)	0 (0)
(4,5]	7.5	6.5	1	3 [1, 10] (0-30)	1 [0, 9] (0-30)	0 [0, 1] (0-28)	1584	27 (1.7)	0 (0)
(5,6]	6.8	5.8	1	3 [1, 9] (0-30)	1 [0, 7] (0-30)	0 [0, 1] (0-30)	1568	21 (1.3)	0 (0)
(6,7]	5.6	4.7	1	2 [1, 6] (0-30)	1 [0, 4] (0-30)	0 [0, 1] (0-30)	1558	14 (0.9)	0 (0)
(7,8]	4.8	3.8	1	2 [0, 5] (0-30)	1 [0, 2] (0-30)	0 [0, 1] (0-30)	1567	14 (0.9)	0 (0)
(8,9]	4	3.1	1	1 [1, 3] (0-30)	1 [0, 1] (0-30)	0 [0, 1] (0-30)	1568	12 (0.8)	0 (0)
(9,10]	3.4	2.4	0.9	1 [0, 3] (0-30)	0 [0, 1] (0-30)	0 [0, 1] (0-30)	1562	8 (0.5)	0 (0)
(10,11]	3	2.1	0.9	1 [0, 3] (0-30)	0 [0, 1] (0-30)	0 [0, 1] (0-30)	1572	18 (1.1)	0 (0)
(11,12]	2.4	1.6	0.8	1 [0, 2] (0-30)	0 [0, 1] (0-30)	0 [0, 1] (0-24)	1568	4 (0.3)	0 (0)

Patients were included in each age interval if had HES data (inpatient, outpatient and A&E) and were alive or not censored in HES in the lower age limit.

Exclude patients on the age intervals if have inpatient spells without a discharge date. Patients not linked to HES were excluded from the analysis.

Table S3. Number of days/month spent in hospital (inpatient) by age intervals during the first year of life
(Numerical data for manuscript Figure 2B)

Age interval (months)	Days/month						Patient number		
	Overall	Mean Cardiac	Non-cardiac/ ambiguous	Median [interquartile range] (min-max range) Overall	Cardiac	Non-cardiac/ ambiguous	Overall	Death (%)	Censoring (%)
(0,1]	19.9	19.2	0.6	22 [11, 30] (0-30)	22 [10, 30] (0-30)	0 [0, 0] (0-30)	2827	202 (7.1)	0 (0)
(1,2]	10.1	9.6	0.5	4 [0, 19] (0-30)	3 [0, 18] (0-30)	0 [0, 0] (0-30)	2639	97 (3.7)	0 (0)
(2,3]	6.8	6.3	0.5	1 [0, 10] (0-30)	0 [0, 8] (0-30)	0 [0, 0] (0-30)	2542	61 (2.4)	0 (0)
(3,4]	6.3	5.7	0.5	1 [0, 8] (0-30)	0 [0, 7] (0-30)	0 [0, 0] (0-30)	2481	53 (2.1)	0 (0)
(4,5]	5.5	5	0.5	0 [0, 6] (0-30)	0 [0, 6] (0-30)	0 [0, 0] (0-27)	2428	36 (1.5)	0 (0)
(5,6]	5	4.5	0.5	0 [0, 6] (0-30)	0 [0, 4] (0-30)	0 [0, 0] (0-30)	2392	32 (1.3)	0 (0)
(6,7]	4.1	3.6	0.5	0 [0, 3] (0-30)	0 [0, 2] (0-30)	0 [0, 0] (0-30)	2360	21 (0.9)	0 (0)
(7,8]	3.4	2.9	0.5	0 [0, 2] (0-30)	0 [0, 1] (0-30)	0 [0, 0] (0-30)	2339	17 (0.7)	0 (0)
(8,9]	2.7	2.3	0.4	0 [0, 1] (0-30)	0 [0, 0] (0-30)	0 [0, 0] (0-30)	2322	16 (0.7)	0 (0)
(9,10]	2.1	1.8	0.4	0 [0, 1] (0-30)	0 [0, 0] (0-30)	0 [0, 0] (0-30)	2306	15 (0.7)	0 (0)
(10,11]	2	1.5	0.4	0 [0, 1] (0-30)	0 [0, 0] (0-30)	0 [0, 0] (0-30)	2291	22 (1)	0 (0)
(11,12]	1.6	1.3	0.3	0 [0, 0] (0-30)	0 [0, 0] (0-30)	0 [0, 0] (0-28)	2269	7 (0.3)	0 (0)

Patients were included in each age interval if alive or not censored in HES in the lower age limit.

Exclude patients on the age intervals if have inpatient spells without a discharge date. Patients not linked to HES were excluded from the analysis.

Table S4. Number of days/month spent in intensive care unit (ICU) by age intervals during the first year of life**(Numerical data for manuscript Figure 2C)**

Age interval (months)	Days/month		Overall	Patient number	
	Mean	Median [interquartile range] (min- max range)		Death (%)	Censoring (%)
(0,1]	8.1	6 [1, 12] (0-30)	2726	240 (8.8)	9 (0.3)
(1,2]	2.6	0 [0, 1] (0-30)	2477	99 (4)	4 (0.2)
(2,3]	1.8	0 [0, 0] (0-30)	2374	61 (2.6)	6 (0.3)
(3,4]	1.7	0 [0, 0] (0-30)	2307	53 (2.3)	12 (0.5)
(4,5]	1.4	0 [0, 0] (0-30)	2242	32 (1.4)	4 (0.2)
(5,6]	1.2	0 [0, 0] (0-30)	2206	31 (1.4)	12 (0.5)
(6,7]	0.9	0 [0, 0] (0-30)	2163	22 (1)	17 (0.8)
(7,8]	0.7	0 [0, 0] (0-30)	2124	15 (0.7)	11 (0.5)
(8,9]	0.6	0 [0, 0] (0-30)	2098	16 (0.8)	11 (0.5)
(9,10]	0.4	0 [0, 0] (0-30)	2071	14 (0.7)	15 (0.7)
(10,11]	0.4	0 [0, 0] (0-30)	2042	22 (1.1)	12 (0.6)
(11,12]	0.3	0 [0, 0] (0-30)	2008	6 (0.3)	4 (0.2)

Patients were included in each age interval if had PICANet data (born since 2002) and were alive or not censored in PICANet in the lower age limit.

Patients not linked to PICANet were excluded from the analysis.

Table S5. Number of days/month spent in hospital (outpatient) by age intervals during the first year of life
(Numerical data for manuscript Figure 2B)

Age interval (months)	Days/month						Patient number		
	Overall	Mean Cardiac	Non-cardiac/ ambiguous	Median [interquartile range] (min-max range) Overall	Cardiac	Non-cardiac/ ambiguous	Overall	Death (%)	Censoring (%)
(0,1]	0.3	0.2	0.1	0 [0, 0] (0-10)	0 [0, 0] (0-5)	0 [0, 0] (0-8)	2514	195 (7.8)	0 (0)
(1,2]	1	0.6	0.4	1 [0, 2] (0-10)	0 [0, 1] (0-9)	0 [0, 0] (0-9)	2324	94 (4)	0 (0)
(2,3]	1	0.6	0.5	1 [0, 1] (0-9)	0 [0, 1] (0-7)	0 [0, 1] (0-8)	2242	60 (2.7)	0 (0)
(3,4]	1	0.6	0.5	1 [0, 1] (0-10)	0 [0, 1] (0-8)	0 [0, 1] (0-7)	2191	51 (2.3)	0 (0)
(4,5]	1	0.5	0.4	1 [0, 1] (0-10)	0 [0, 1] (0-7)	0 [0, 1] (0-8)	2148	32 (1.5)	0 (0)
(5,6]	1	0.5	0.5	1 [0, 1] (0-12)	0 [0, 1] (0-9)	0 [0, 1] (0-10)	2124	32 (1.5)	0 (0)
(6,7]	0.9	0.5	0.4	1 [0, 1] (0-9)	0 [0, 1] (0-7)	0 [0, 1] (0-9)	2101	21 (1)	0 (0)
(7,8]	0.9	0.4	0.4	1 [0, 1] (0-10)	0 [0, 1] (0-10)	0 [0, 1] (0-8)	2091	16 (0.8)	0 (0)
(8,9]	0.9	0.4	0.4	1 [0, 1] (0-12)	0 [0, 1] (0-12)	0 [0, 1] (0-11)	2082	16 (0.8)	0 (0)
(9,10]	0.8	0.4	0.4	0 [0, 1] (0-9)	0 [0, 1] (0-8)	0 [0, 1] (0-9)	2072	14 (0.7)	0 (0)
(10,11]	0.8	0.4	0.4	0 [0, 1] (0-9)	0 [0, 1] (0-9)	0 [0, 1] (0-9)	2066	22 (1.1)	0 (0)
(11,12]	0.7	0.3	0.4	0 [0, 1] (0-11)	0 [0, 1] (0-11)	0 [0, 1] (0-9)	2055	6 (0.3)	0 (0)

Patients were included in each age interval if had outpatient data and were alive or not censored in HES in the lower age limit.

Patients not linked to HES were excluded from the analysis.

Table S6. Number of days/year spent in hospital (inpatient, outpatient and A&E not admitted) by age intervals between 0-18 years
(Numerical data for manuscript Figure 4A)

Age interval (years)	Days/year						Patient number		
	Overall	Mean Cardiac	Non-cardiac/ ambiguous	Median [interquartile range] (min-max range) Overall	Cardiac	Non-cardiac/ ambiguous	Overall	Death (%)	Censoring (%)
(0,1]	79.4	69.6	9.8	60 [37, 102] (0-365)	50 [30, 86] (0-365)	6 [1, 13] (0-255)	1826	414 (22.7)	0 (0)
(1,2]	17.5	9.8	7.6	9 [5, 19] (0-365)	3 [2, 8] (0-365)	4 [2, 9] (0-114)	1580	40 (2.5)	100 (6.3)
(2,3]	11.9	6.8	5.2	6 [3, 14] (0-356)	2 [1, 5] (0-356)	3 [1, 6] (0-73)	1570	22 (1.4)	130 (8.3)
(3,4]	14.3	9.2	5.1	7 [3, 18] (0-365)	3 [2, 10] (0-365)	2 [1, 6] (0-67)	1540	15 (1)	131 (8.5)
(4,5]	16	10.4	5.5	9 [4, 22] (0-360)	3 [2, 14] (0-360)	3 [1, 7] (0-79)	1504	12 (0.8)	153 (10.2)
(5,6]	14	8.6	5.5	7 [3, 19] (0-302)	2 [1, 8] (0-302)	3 [1, 7] (0-66)	1432	9 (0.6)	124 (8.7)
(6,7]	11.3	6.4	4.9	6 [2, 15] (0-365)	2 [1, 4] (0-365)	2 [0, 6] (0-94)	1386	6 (0.4)	144 (10.4)
(7,8]	9.3	4.8	4.6	4 [2, 13] (0-115)	2 [1, 3] (0-115)	2 [0, 6] (0-62)	1342	6 (0.4)	139 (10.4)
(8,9]	8.5	4	4.4	4 [2, 11] (0-120)	1 [1, 3] (0-109)	2 [0, 5] (0-76)	1197	4 (0.3)	151 (12.6)
(9,10]	8.5	4.1	4.4	4 [2, 11] (0-131)	1 [1, 3] (0-129)	2 [0, 6] (0-66)	1042	8 (0.8)	121 (11.6)
(10,11]	8.4	3.9	4.5	4 [1, 11] (0-135)	1 [1, 3] (0-70)	2 [0, 6] (0-115)	913	6 (0.7)	144 (15.8)
(11,12]	7.8	3.7	4.1	4 [1, 10] (0-239)	1 [1, 3] (0-239)	2 [0, 5] (0-50)	763	2 (0.3)	141 (18.5)
(12,13]	7.9	3.9	4	4 [1, 9] (0-123)	1 [1, 3] (0-111)	2 [0, 5] (0-62)	620	2 (0.3)	127 (20.5)
(13,14]	7.6	3.8	3.8	3 [1, 9] (0-218)	1 [1, 2] (0-210)	1 [0, 4] (0-54)	491	0 (0)	110 (22.4)
(14,15]	7.4	3.5	3.9	3 [1, 9] (0-83)	1 [0, 3] (0-74)	1 [0, 5] (0-46)	381	0 (0)	100 (26.2)
(15,16]	6.9	3	3.9	3 [1, 8] (0-59)	1 [1, 3] (0-33)	1 [0, 4] (0-54)	281	0 (0)	93 (33.1)
(16,17]	5.2	2.2	3	2 [1, 6] (0-35)	1 [1, 2] (0-24)	1 [0, 4] (0-31)	188	0 (0)	86 (45.7)
(17, 18]	4.1	1.5	2.6	2 [0, 5] (0-44)	1 [0, 2] (0-38)	0 [0, 3] (0-43)	102	0 (0)	102 (100)

Patients were included in each age interval if had HES data (inpatient, outpatient and A&E) and were alive or not censored in HES in the lower age limit.

Exclude patients on the age intervals if have inpatient spells without a discharge date. Patients not linked to HES were excluded from the analysis.

Table S7. Number of days/year spent in hospital (inpatient) by age intervals between 0-18 years
(Numerical data for manuscript Figure 4B)

Age interval (years)	Days/year						Patient number		
	Overall	Mean Cardiac	Non-cardiac/ ambiguous	Median [interquartile range] (min-max range) Overall	Cardiac	Non-cardiac/ ambiguous	Overall	Death (%)	Censoring (%)
(0,1]	62.6	57.6	5	43 [25, 77] (0-365)	39 [22, 69] (0-365)	1 [0, 5] (0-254)	2819	576 (20.4)	0 (0)
(1,2]	10	7.3	2.7	2 [0, 9] (0-365)	0 [0, 6] (0-365)	1 [0, 2] (0-102)	2262	57 (2.5)	100 (4.4)
(2,3]	5.8	4.3	1.5	1 [0, 4] (0-365)	0 [0, 2] (0-365)	0 [0, 1] (0-62)	2104	28 (1.3)	130 (6.2)
(3,4]	7.7	6.3	1.3	2 [0, 9] (0-365)	1 [0, 6] (0-365)	0 [0, 1] (0-70)	1946	18 (0.9)	131 (6.7)
(4,5]	8.2	7	1.2	2 [0, 11] (0-360)	1 [0, 10] (0-360)	0 [0, 1] (0-50)	1798	17 (0.9)	153 (8.5)
(5,6]	6.2	5.2	0.9	1 [0, 5] (0-302)	0 [0, 3] (0-302)	0 [0, 1] (0-45)	1628	9 (0.6)	124 (7.6)
(6,7]	4.2	3.3	0.8	0 [0, 2] (0-365)	0 [0, 1] (0-365)	0 [0, 1] (0-75)	1493	7 (0.5)	144 (9.6)
(7,8]	2.7	2.1	0.6	0 [0, 1] (0-115)	0 [0, 0] (0-114)	0 [0, 0] (0-57)	1342	6 (0.4)	139 (10.4)
(8,9]	2.1	1.4	0.6	0 [0, 1] (0-103)	0 [0, 0] (0-100)	0 [0, 0] (0-51)	1197	4 (0.3)	151 (12.6)
(9,10]	2.1	1.5	0.6	0 [0, 1] (0-125)	0 [0, 0] (0-125)	0 [0, 0] (0-52)	1042	8 (0.8)	121 (11.6)
(10,11]	2	1.2	0.7	0 [0, 1] (0-119)	0 [0, 0] (0-63)	0 [0, 0] (0-101)	913	6 (0.7)	144 (15.8)
(11,12]	1.5	0.9	0.6	0 [0, 1] (0-239)	0 [0, 0] (0-238)	0 [0, 0] (0-38)	763	2 (0.3)	141 (18.5)
(12,13]	1.9	1.4	0.5	0 [0, 1] (0-109)	0 [0, 0] (0-107)	0 [0, 0] (0-22)	620	2 (0.3)	127 (20.5)
(13,14]	1.6	1	0.6	0 [0, 0] (0-207)	0 [0, 0] (0-202)	0 [0, 0] (0-47)	491	0 (0)	110 (22.4)
(14,15]	1.3	0.7	0.5	0 [0, 1] (0-67)	0 [0, 0] (0-60)	0 [0, 0] (0-20)	381	0 (0)	100 (26.2)
(15,16]	1.5	0.8	0.7	0 [0, 1] (0-48)	0 [0, 0] (0-27)	0 [0, 0] (0-47)	281	0 (0)	93 (33.1)
(16,17]	0.8	0.3	0.5	0 [0, 0] (0-32)	0 [0, 0] (0-11)	0 [0, 0] (0-28)	188	0 (0)	86 (45.7)
(17, 18]	0.8	0.6	0.2	0 [0, 0] (0-36)	0 [0, 0] (0-35)	0 [0, 0] (0-9)	102	0 (0)	102 (100)

Patients were included in each age interval if alive or not censored in HES in the lower age limit.

Exclude patients on the age intervals if have inpatient spells without a discharge date. Patients not linked to HES were excluded from the analysis.

Table S8. Number of days/year spent in intensive care unit (ICU) by age intervals between 0-15 years*
(Numerical data for manuscript Figure 4C)

Age interval (years)	Days/year			Patient number	
	Mean	Median [interquartile range] (min- max range)	Overall	Death (%)	Censoring (%)
(0,1]	8.1	10 [4, 20] (0-365)	2726	611 (22.4)	117 (4.3)
(1,2]	2.6	0 [0, 1] (0-141)	1998	51 (2.6)	134 (6.7)
(2,3]	1.8	0 [0, 0] (0-89)	1813	18 (1)	146 (8.1)
(3,4]	1.7	0 [0, 1] (0-225)	1649	17 (1)	157 (9.5)
(4,5]	1.4	0 [0, 1] (0-158)	1475	13 (0.9)	137 (9.3)
(5,6]	1.2	0 [0, 0] (0-36)	1325	8 (0.6)	153 (11.5)
(6,7]	0.9	0 [0, 0] (0-39)	1164	6 (0.5)	145 (12.5)
(7,8]	0.7	0 [0, 0] (0-71)	1013	5 (0.5)	152 (15)
(8,9]	0.6	0 [0, 0] (0-52)	856	2 (0.2)	123 (14.4)
(9,10]	0.4	0 [0, 0] (0-90)	731	3 (0.4)	146 (20)
(10,11]	0.4	0 [0, 0] (0-43)	582	5 (0.9)	144 (24.7)
(11,12]	0.3	0 [0, 0] (0-3)	433	2 (0.5)	125 (28.9)
(12,13]	8.1	0 [0, 0] (0-91)	306	1 (0.3)	113 (36.9)
(13,14]	2.6	0 [0, 0] (0-17)	192	0 (0)	100 (52.1)
(14,15]	1.8	0 [0, 0] (0-7)	92	0 (0)	92 (100)

* No PICANet data on age over 15 years old.

Patients were included in each age interval if had PICANet data (born since 2002) and were alive or not censored in PICANet in the lower age limit.

Patients not linked to PICANet were excluded from the analysis.

Table S9. Number of days/year spent in hospital (outpatient) by age intervals between 0-18 years
(Numerical data for manuscript Figure 4D)

Age interval (years)	Days/year						Patient number		
	Overall	Mean Cardiac	Non-cardiac/ ambiguous	Median [interquartile range] (min-max range) Overall	Cardiac	Non-cardiac/ ambiguous	Overall	Death (%)	Censoring (%)
(0,1]	8.8	4.7	4.1	8 [3, 12] (0-75)	4 [1, 7] (0-55)	2 [0, 6] (0-70)	2514	557 (22.2)	0 (0)
(1,2]	6.6	2.8	3.8	5 [3, 8] (0-86)	2 [1, 4] (0-49)	2 [0, 5] (0-77)	2058	52 (2.5)	100 (4.9)
(2,3]	5.2	2.2	2.9	4 [2, 6] (0-63)	2 [1, 3] (0-38)	2 [0, 4] (0-57)	1999	26 (1.3)	130 (6.5)
(3,4]	5.5	2.5	3	4 [2, 6] (0-67)	2 [1, 3] (0-66)	1 [0, 4] (0-52)	1951	18 (0.9)	132 (6.8)
(4,5]	6.5	2.9	3.6	4 [2, 8] (0-80)	2 [1, 3] (0-80)	2 [0, 4] (0-60)	1801	17 (0.9)	153 (8.5)
(5,6]	7	3	4	4 [2, 9] (0-55)	2 [1, 3] (0-50)	2 [0, 5] (0-51)	1631	9 (0.6)	125 (7.7)
(6,7]	6.4	2.8	3.6	4 [2, 8] (0-56)	2 [1, 3] (0-51)	1 [0, 4] (0-40)	1497	7 (0.5)	147 (9.8)
(7,8]	6.3	2.7	3.6	3 [1, 8] (0-54)	1 [1, 2] (0-41)	1 [0, 4] (0-52)	1343	6 (0.4)	139 (10.3)
(8,9]	6	2.6	3.5	3 [1, 8] (0-66)	1 [1, 2] (0-38)	1 [0, 4] (0-65)	1198	4 (0.3)	151 (12.6)
(9,10]	6.1	2.6	3.5	3 [1, 8] (0-49)	1 [1, 2] (0-44)	1 [0, 4] (0-47)	1043	8 (0.8)	121 (11.6)
(10,11]	6.1	2.7	3.5	3 [1, 8] (0-59)	1 [1, 2] (0-58)	1 [0, 4] (0-46)	914	6 (0.7)	145 (15.9)
(11,12]	6	2.8	3.3	3 [1, 7] (0-67)	1 [1, 2] (0-67)	1 [0, 4] (0-41)	763	2 (0.3)	141 (18.5)
(12,13]	5.7	2.5	3.2	3 [1, 7] (0-70)	1 [1, 2] (0-69)	1 [0, 4] (0-62)	620	2 (0.3)	127 (20.5)
(13,14]	5.7	2.7	3	3 [1, 7] (0-81)	1 [1, 2] (0-76)	1 [0, 3] (0-44)	491	0 (0)	110 (22.4)
(14,15]	5.8	2.7	3	3 [1, 7] (0-52)	1 [0, 2] (0-51)	1 [0, 3] (0-35)	381	0 (0)	100 (26.2)
(15,16]	5.1	2.2	2.9	3 [1, 6] (0-32)	1 [1, 2] (0-25)	1 [0, 3] (0-30)	281	0 (0)	93 (33.1)
(16,17]	4.1	1.8	2.3	2 [1, 5] (0-27)	1 [0, 2] (0-20)	0 [0, 2] (0-25)	188	0 (0)	86 (45.7)
(17, 18]	3.1	0.9	2.3	1 [0, 4] (0-44)	1 [0, 1] (0-5)	0 [0, 2] (0-43)	102	0 (0)	102 (100)

Patients were included in each age interval if had outpatient data and were alive or not censored in HES in the lower age limit.

Patients not linked to HES were excluded from the analysis.

REFERENCES

1. Rogers L, Pagel C, Sullivan ID, Mustafa M, Tsang V, Utley M, Bull C, Franklin RC, Brown KL. Interventional treatments and risk factors in patients born with hypoplastic left heart syndrome in England and Wales from 2000 to 2015. *Heart*. 2018;104.
2. Hadjicosta E, Franklin R, Seale A, Stumper O, Tsang V, Anderson DR, Pagel C, Crowe S, Espuny Pujol F, Ridout D, Brown KL. Cohort study of intervened functionally univentricular heart in England and Wales (2000–2018). *Heart*. 2021;0:heartjnl-2021-319677.