



1 Q:1 **Negative energy balance hinders prosocial helping behavior** 59

2 60  
 3 Q:3 Macarena Pozo<sup>a,1</sup> , Maria Milà-Guasch<sup>a</sup>, Roberta Haddad-Tóvoli<sup>a</sup> , Mehdi Boudjadja<sup>b</sup> , Iñigo Chivite<sup>a</sup> , Miriam Toledo<sup>a</sup>, Alicia G. Gómez-Valadés<sup>a</sup>, Q:4 61  
 4 Elena Eyre<sup>a</sup>, Sara Ramírez<sup>a</sup>, Arnaud Obri<sup>a</sup>, Inbal Ben-Ami Bartal<sup>c,d</sup> , Giuseppe D'Agostino<sup>b</sup> , Joan Costa-Font<sup>e</sup> , and Marc Claret<sup>a,f,g,1</sup> 62

5 Edited by John Speakman, Chinese Academy of Sciences, Shenzhen, China; received October 27, 2022; accepted February 2, 2023 63  
 6 64

7 Q:11 The internal state of an animal, including homeostatic requirements, modulates its behavior. Negative energy balance stimulates hunger, thus promoting a range of actions aimed at obtaining food. While these survival actions are well established, the influence of the energy status on prosocial behavior remains unexplored. We developed a paradigm to assess helping behavior in which a free mouse was faced with a conspecific trapped in a restrainer. We measured the willingness of the free mouse to liberate the confined mouse under diverse metabolic conditions. Around 42% of ad libitum-fed mice exhibited a helping behavior, as evidenced by the reduction in the latencies to release the trapped cagemate. This behavior was independent of subsequent social contact reward and was associated with changes in corticosterone indicative of emotional contagion. This decision-making process was coupled with reduced blood glucose excursions and higher ATP:ADP ratios in the forebrain of helper mice, suggesting that it was a highly energy-demanding process. Interestingly, chronic (food restriction and type 2 diabetes) and acute (chemogenetic activation of hunger-promoting AgRP neurons) situations mimicking organismal negative energy balance and enhanced appetite attenuated helping behavior toward a distressed conspecific. To investigate similar effects in humans, we estimated the influence of glycated hemoglobin (a surrogate of long-term glycemic control) on prosocial behavior (namely charity donation) using the Understanding Society dataset. Our results evidenced that organismal energy status markedly influences helping behavior and that hypothalamic AgRP neurons are at the interface of metabolism and prosocial behavior. 65-78

8 helping behavior | energy status | AgRP neurons | hunger | hypothalamus 66

9 The internal state of an animal (including arousal, motivation, emotion, and varying homeostatic needs) can profoundly influence its behavioral decisions (1). Indeed, the integration of external and internal cues orchestrates appropriate behavioral and physiological responses that are crucial for survival (1). For example, limited food resources entail a situation of negative energy balance that stimulates hunger. Hunger is a universally recognized signal that triggers a repertoire of behaviors aimed at fulfilling organismal energy requirements (2). In this context, it is well established that hunger modulates sensory perception and promotes a range of orchestrated and prioritized behaviors that are intuitively connected with food acquisition (locomotion, exploratory drive, foraging, etc.) (2). However, less is known about the impact of hunger on emotions and, in particular, on prosocial behaviors. 67-79

10 Prosocial behaviors are voluntary actions intended to benefit others, such as sharing, comforting, caring, and helping in the absence of reward (3). In the context of the present research, the word “intended” refers to a goal-directed learned action in order to be more suitable for interpreting mouse behavior (4). It is believed that the basis of targeted helping is empathy, an advanced mental capacity that has been traditionally restricted to humans (5). However, growing experimental findings evidence the existence of empathy-like behaviors in diverse animal species (3) including rodents (6). Indeed, rats and mice are able to perceive negative experiences of conspecifics via emotional contagion (7–9) and even rescue conspecifics in distress under threatening situations (10–13). 80-89

11 In the current study, we aimed at investigating whether perturbations in the organismal metabolic status influence prosocial helping behavior in mice. We found that diverse interventions mimicking a state of negative energy balance compromised helping performance, as measured by the liberation of distressed conspecifics under restrained conditions. This process, which was guided by emotional contagion, was highly demanding in terms of brain energy costs. Our data also provide evidence that pathological conditions associated with negative energy balance interfere with helping behavior in both mice and humans. 90-99

12 **Materials and Methods** 100

13 Q:13 **Animals and Husbandry.** Mice were maintained in a 12-h light-dark cycle with free access to water and standard chow diet unless stated. C57BL/6 and *AgRP<sup>cre/+</sup>* mice (14) were bred in-house. All experimental protocols 101-102

**Significance**

In the current study, we investigate the influence of the metabolic internal state of an animal on prosocial helping behavior. We found that situations that entail hunger or limited nutrient availability correlated with a reduced helping behavior toward a conspecific in distress. These results represent a significant advance in the field of prosocial science as they provide insights into complex animal behaviors. Furthermore, our work also evidence that specific hypothalamic neurons are at the interface of metabolic control and helping behavior, thus integrating homeostatic and social cues. 103-106

Author affiliations: <sup>a</sup>Neuronal Control of Metabolism Laboratory, Institut d'Investigacions Biomèdiques August Pi i Sunyer, Barcelona, Spain; <sup>b</sup>Faculty of Biology, Medicine and Health, School of Medical Sciences, University of Manchester, Manchester, United Kingdom; <sup>c</sup>School of Psychological Sciences, Tel-Aviv University, Tel Aviv, Israel; <sup>d</sup>Sagol School of Neuroscience, Tel-Aviv University, Tel Aviv, Israel; <sup>e</sup>Department of Health Policy, London School of Economics and Political Science, London, United Kingdom; <sup>f</sup>Centro de Investigación Biomédica en Red de Diabetes y Enfermedades Metabólicas Asociadas, Instituto de Salud Carlos III, Spain; and <sup>g</sup>School of Medicine, Universitat de Barcelona, Barcelona, Spain 107-109

Author contributions: M.P. and M.C. designed research; M.P., M.M.-G., R.H.-T., M.B., I.C., M.T., A.G.G.-V., E.E., S.R., A.O., and J.C.-F. performed research; I.B.-A.B., G.D., and M.C. contributed new reagents/analytic tools; M.P., J.C.-F., and M.C. analyzed data; and M.P. and M.C. wrote the paper. 110-112

The authors declare no competing interest. 113

This article is a PNAS Direct Submission. 114

Copyright © 2023 the Author(s). Published by PNAS. This article is distributed under Creative Commons Attribution-NonCommercial-NoDerivatives License 4.0 (CC BY-NC-ND). 115-116

<sup>1</sup>To whom correspondence may be addressed. Email: amacarena.ebre.ics@gencat.cat or mclaret@recerca.clinic.cat. 117

This article contains supporting information online at <https://www.pnas.org/lookup/suppl/doi:10.1073/pnas.2218142120/-/DCSupplemental>. 118

Published XXXX. 119

117 were approved by the University of Barcelona Ethics Committee complying with  
118 the current Spanish and European legislation.

119 **Behavioral Procedures.** General behavioral procedures are detailed in  
120 *SI Appendix, Materials and Methods*.

121 **Helping Behavior Test (HBT). Apparatus.** The HBT for mice described herein  
122 was adapted from a previously established protocol for rats (12). Briefly, a rodent  
123 restrainer (5 cm diameter and 18 cm long) was divided into two equal com-  
124 partments (5 cm diameter and 4 cm long) that were large enough to permit  
125 the trapped mouse to move and turn around. The restrainer, which was laid on  
126 a methacrylate platform (21 × 18 cm), had two rabbits housing sliding doors  
127 on both sides. These doors could be opened by either pushing or pulling. This  
128 action required perseverance before accomplishing effective opening and could  
129 not be executed randomly or by chance. A trapped dummy mouse was used as  
130 a control to ensure that door opening was motivated by helping behavior rather  
131 than arbitrary behaviors.

132 **Subjects.** Animals were weaned in groups of four mice per cage and at 6 to 8 wk  
133 of age were housed in dyads. Trapped and free mice were randomly designated,  
134 and no selection criteria was used prior to the actual study. Free mice were labeled  
135 with an ear perforation. Tests were conducted at 10 to 12 wk of age.

136 **Protocol.** It comprises the habituation phase, the helping testing phase, and, in  
137 some cases, the crossover phase. Habituation consisted of daily sessions during 4  
138 consecutive days, where trapped and free mice were allowed to freely explore the  
139 arena and the empty restrainer for 15 min. The helping testing phase consisted of  
140 daily sessions during 10 consecutive days. Free mice were exposed to the restrainer  
141 empty or with a dummy and trapped mouse (in a counterbalanced position) for  
142 30 min. After this time, if the free mouse was unable to liberate the conspecific,  
143 the experimenter manually half-opened the door and allowed the trapped and  
144 free mice to remain in the arena for 10 additional minutes. The crossover phase  
145 consisted of extending the helping testing phase for 10 additional daily sessions  
146 or until achieving 5 consecutive opening days but exchanging treatments between  
147 groups. Each dyad performed only one trial per day during the entire protocol.

148 **Nonhelper and helper mice.** Free mice performed the task for 10 consecutive  
149 days (always with the same paired trapped mouse). Mice were considered non-  
150 helpers when failed to liberate the trapped conspecific after the 10-d protocol.  
151 A free mouse that liberated its trapped cagemate for at least five consecutive  
152 sessions was considered a helper mouse. Thus, the exposure time to the HBT  
153 was 10 d for nonhelper mice and 10.4 to 12.1 d for helper animals [as they  
154 began to release their cagemates around the sixth day of testing; mean (95%  
155 CI) = 6.3 (5.4 to 7.2) d].

156 **Latency to door opening.** Helper mice that started opening after the fifth ses-  
157 sion were tested until they achieved five consecutive door openings. However,  
158 door-opening latencies were plotted only until day 10 of testing. In the crossover  
159 phase, the latency to door opening was plotted from the first day of crossover  
160 treatment until helper mice achieved 5 consecutive days of door opening.

161 **Separated helping test.** To investigate whether door opening was motivated by  
162 subsequent social contact rather than a genuine helping behavior, we modified  
163 the HBT in a way that the released and helper mice remained physically separated.  
164 Details are provided in *SI Appendix, Materials and Methods*.

165 **Food restriction.** Twelve-week-old C57BL/6 mice were submitted to food restric-  
166 tion using an automated feeder system (ClockLab Feeder Control, Actimetrics) that  
167 provided scheduled dustless precision pellets (BioServe). Control ad libitum-fed  
168 mice were provided with the same diet. Food restriction consisted of ad libitum  
169 access to food only during the dark cycle and at the necessary amount to maintain  
170 85 to 90% of the initial body weight. This protocol started the night of the first  
171 habituation session and was maintained across the sessions of each phase of  
172 the protocol.

173 **Sucrose consumption test.** After the regular HBT, mice were submitted to an  
174 extra session with locked doors. A bottle containing 1% sucrose was offered in the  
175 arena. Sucrose consumption was measured at the end of the test.

176 **High palatable food accessibility.** To test if the presence of a high palatable  
177 food influenced helping behavior, we replaced the dummy mouse during the

178 HBT with a pellet containing 45% of Kcal derived from fat (Research Diets). This  
179 diet was presented in the home cage in small quantities (0.6 g/d) for 2 d before  
180 the test. Experimental setup, testing, and measurements were performed as  
181 described above.

182 **Streptozotocin (STZ)-induced diabetes.** Six-week-old C57BL/6 mice were  
183 intraperitoneally injected with STZ (50 mg/kg, Sigma) or vehicle (sodium citrate  
184 dihydrate, pH 5.4) for 5 consecutive days after 5-h fasting. One week after the  
185 final injection, blood glucose was measured. Animals were considered diabetic  
186 when random-fed blood glucose levels were  $\geq 200$  mg/dL. Mice were submitted  
187 to the HBT at 12 wk of age.

188 **Chemogenetic activation of AgRP neurons.** *AgRP<sup>Cre/+</sup>* mice were injected  
189 with an adeno-associated virus (AAV) encoding excitatory Designer Receptors  
190 Exclusively Activated by Designer Drugs [DREADDs; AAV8-hSYN-DIO-hM3D(Gq)-  
191 mCherry, Addgene] into the ARC. Detailed information is described in *SI Appendix,*  
192 *Materials and Methods*.

193 **Quantification of Social Interaction Test.** Assessment of social interaction  
194 between helper/nonhelper mice and trapped counterparts was conducted fol-  
195 lowing previously published protocols (15). Detailed information is described  
196 in *SI Appendix, Materials and Methods*.

197 **Elevated Plus Maze Test.** Twelve-week-old naive free mice, after four sessions  
198 of habituation to the arena and the empty restrainer, were randomly exposed  
199 to a dummy or trapped mouse during 20 min under the same setup as in the  
200 HBT. The elevated plus maze test was based on previously published protocols  
201 (16). Detailed information is described in *SI Appendix, Materials and Methods*.

202 **Physiological Tests.** Body weight, blood glucose, and blood sampling for corti-  
203 costerone quantification were performed during the morning (1 to 6 h after lights  
204 on) of day 5 of the HBT. Blood samples were taken 30 min before and immedi-  
205 ately after the HBT. Each session included four parallel arenas with nonhelper  
206 and helper dyads in a counterbalanced manner. In this particular experimental  
207 setting, the researcher did not open the doors at the end of the test, thus avoiding  
208 potential interferences of social contact with the glucose or corticosterone levels.  
209 All animals received the same cues and the same time exposure to the behavioral  
210 paradigm to minimize confounding factors. Blood glucose was measured using  
211 a glucometer (Arkray). Blood samples were collected via the tail vein using a  
212 capillary collection system with EDTA (Sarstedt) and centrifuged at 3,600 rpm  
213 for 20 min at 4 °C to obtain plasma. Corticosterone was measured via the ELISA  
214 Kit (Immunodiagnostic Systems).

215 **Fluorescent mRNA In Situ Hybridization (RNAScope) and Quantification.**  
216 Fluorescent in situ hybridization for the simultaneous detection of oxytocin (*Oxt*)  
217 and *Fos* mRNA was performed using RNAScope. Detailed information is described  
218 in *SI Appendix, Materials and Methods*.

219 **FOS Brain Immunostaining and Quantification.** Brain slices from helper  
220 and nonhelper mice were stained with rabbit anti-FOS primary antibody (1:200;  
221 Santa Cruz Biotechnology) following standard protocols. Detailed information is  
222 described in *SI Appendix, Materials and Methods*.

223 **Hexokinase (HK) Brain Immunostaining and Analysis.** Brain slices were  
224 incubated with rabbit anti-HK antibody (1:200; Merck Millipore) following  
225 standard protocols. A custom-made macro was programmed with instructions  
226 for the automated image analysis pipeline. HK-positive cells were segmented  
227 as previously described (17). Detailed information is described in *SI Appendix,*  
228 *Materials and Methods*.

229 **Metabolite Analysis by NMR.** After an extra session of HBT with locked doors,  
230 mice were killed, and brain regions were rapidly dissected in a cold matrix/plate.  
231 Brain metabolite extraction was performed according to the methanol:chloroform  
232 protocol as previously described (18). Metabolite quantification was performed  
233 by comparing the area of the peaks of interest to that of TPS using Chenomx  
234 (19). Detailed information is described in *SI Appendix, Materials and Methods*.

235 **Prosociality in a Sample of the British Public.** We used data from the  
236 Understanding Society, the main UK Household Longitudinal Survey (20),  
237 which contains a sample of biomarkers. Detailed information is described in  
238 *SI Appendix, Materials and Methods*.

**Statistical Analysis.** Statistical analyses of animal studies were performed using GraphPad Prism software. Specific statistical tests and the number of animals per group are detailed in the text or figure legends. The Kolmogorov-Smirnov test was used to examine if door-opening latencies were normally distributed. Datasets with two factors and one dependent variable were analyzed using two-way ANOVA followed by post hoc analyses with Bonferroni corrections for multiple comparisons. Two-group, one-factor comparisons were performed using a two-tailed unpaired Student's *t* test or Mann-Whitney *U* test. Correlations were assessed by the Spearman coefficient. The analysis of the Understanding Society dataset was performed using Stata software.  $P < 0.05$  was considered statistically significant. Symbols used are \* $P < 0.05$ , \*\* $P < 0.01$ , \*\*\* $P < 0.001$ , and \*\*\*\* $P < 0.0001$ .

## Results

**Mice Exhibit Prosocial Helping Behavior toward a Trapped Conspecific.** To investigate the influence of metabolic state on prosocial helping behavior in mice, we adapted a previously validated paradigm described by Bartal and collaborators (12). The paradigm, hereafter called the HBT, consisted of placing a free mouse in an arena with a two-compartment restrainer (containing a trapped cagemate or a dummy mouse) closed by sliding doors (Fig. 1A and *SI Appendix, Fig. S1A*). The dummy mouse served as the control condition to rule out any motivation for door opening other than goal-directed helping. Under this setting, the liberation of the trapped cagemate required a free decision-making task (Fig. 1A and *SI Appendix, Fig. S1A* and *Movie S1*).

Testing sessions were conducted for 10 consecutive days and lasted 40 min. During the first 30 min, the free mouse was able to undisturbedly explore the arena and the restrainer containing the trapped and dummy mouse. If the free mouse failed to liberate the confined conspecific, the experimenter manually half-opened the sliding door (to prevent learned helplessness) and allowed both mice to remain together in the arena for 10 min. A mouse that liberated its cagemate for at least five consecutive sessions was considered a "helper." On average, helper mice began to release their cagemates around the sixth day of testing [mean (95% CI) = 6.3 (5.4 to 7.2) d], and the latencies of liberation rapidly decreased in subsequent sessions showing a directed and effective execution of the door-opening task [Fig. 1B; median (95% CI) for empty = 30.0 (30.0 to 30.0) min, trapped = 22.9 (6.8 to 30.0) min, dummy = 24.7 (11.7 to 30.0) min]. Helper mice also opened the door where the dummy mouse was located but invariably after liberating their cagemate (Fig. 1B). In contrast, helper mice exposed to an empty restrainer did not pull the sliding doors throughout a whole week of testing sessions (Fig. 1B). The proportion of helper mice versus the total tested was 42%, while free mice opening the dummy mouse compartment only accounted for 25% ( $P = 0.02$ , Fisher exact test; helpers = 14 of 34 male dyads, three independent experiments; *SI Appendix, Fig. S1B*). Altogether, these results suggested that door opening is a learned action requiring motivation (higher interest for trapped vs. dummy mouse) that is not merely driven by the innate exploratory behavior of mice (empty condition). Accordingly, helper mice exhibited similar exploratory behavior to nonhelpers, indicated by an equivalent number of entries into the zones where trapped or dummy mice were located (Fig. 1C). However, helper mice spent more time in the trapped mouse quadrant than in the dummy mouse area (Fig. 1D), indicating increased interest of helper mice toward liberating the confined conspecific. Consistently, interaction time with the trapped mouse was higher in helper mice (Fig. 1E).

**Release of Trapped Mice Is Independent of Social Contact-Seeking Reward.** To test whether door opening was motivated by subsequent social contact-seeking reward or by a genuine helping

behavior, we modified our experimental paradigm in a way that the released mouse was physically separated from the helper cagemate, thus permitting sensory but not physical interactions (*SI Appendix, Fig. S1C*). Under this setting, helper mice were consecutively exposed to either a cagemate or a dummy mouse in a counterbalanced order to avoid exposure bias. When a conspecific was locked in the restrainer, latencies of door opening decreased throughout sessions as expected (Fig. 1F). However, when a dummy mouse was presented, door-opening latencies gradually increased consistent with a decline in motivation (Fig. 1F). Notably, under social interaction avoidance conditions, 70% of helper mice continued releasing the trapped mice, while only 50% of them persisted in opening the door for the dummy mouse ( $P = 0.006$ , Fisher exact test;  $n = 14$  male dyads, two independent experiments; *SI Appendix, Fig. S1D*). Collectively, and coherent with other studies in rodents (12, 21), our results suggested that the underlying foundation for helping behavior in mice is based on affective motivation that is independent of social and physical contact reward.

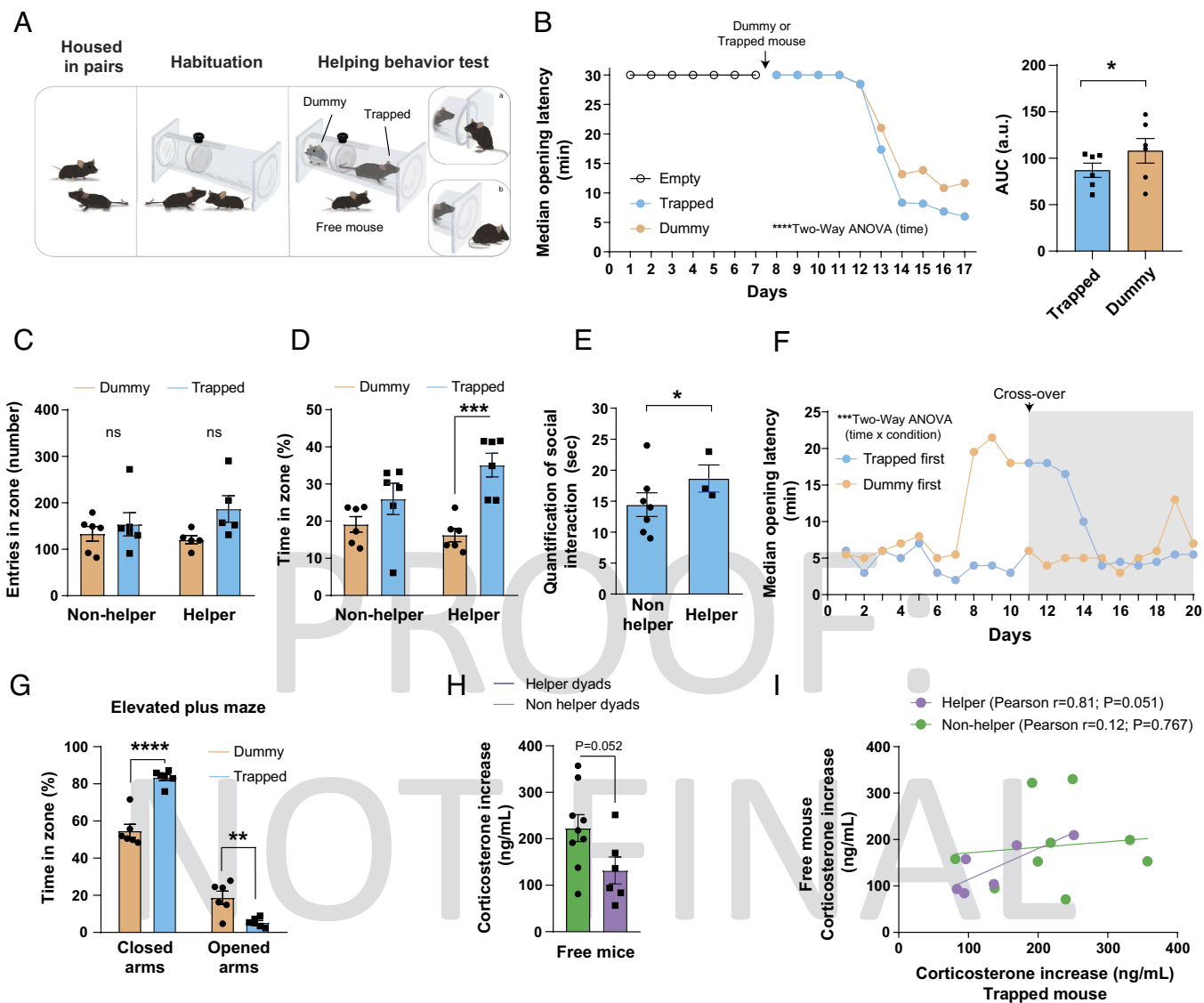
### Release of Trapped Mice Is Promoted by Emotional Contagion.

Emotional contagion is considered a primitive form of empathy, which is a key motivation factor for prosocial helping behavior (5). To investigate if the directed response of helper mice was driven by the perception of stress in restrained conspecifics, naive free mice were submitted to the elevated plus maze test immediately after being exposed either to a dummy or trapped mouse in the first session. Exposure to a trapped mouse dramatically increased the time spent in closed arms, indicating enhanced anxiety-like behavior (Fig. 1G). Additionally, we also measured the increase in plasma corticosterone (difference between the final and initial values) as a proxy of emotional contagion (7). As expected, trapped mice from either nonhelper or helper dyads showed a similar increase in plasma corticosterone (nonhelper:  $180.5 \pm 27.2$  ng/mL vs. helper:  $150.6 \pm 22.7$  ng/mL, unpaired *t* test,  $P = 0.49$ ). However, helper mice displayed a lesser increase in corticosterone compared with nonhelper mice (Fig. 1H). This is in agreement with previous findings indicating that helping behavior requires a mild increase in the stress response since intense stress or anxiolytic treatment impairs helping (13). Furthermore, the increase in plasma corticosterone positively correlated between helper dyads (although marginally) but not between nonhelper ones (Fig. 1I). This combination of physiological and behavioral state matching observed in helper mice suggests the engagement of emotional contagion.

### Helping Behavior Is a Highly Energy-Demanding Process for the Brain.

To initially explore the link between metabolic state and helping behavior, we measured blood glucose concentration in free mice immediately before and after performing the HBT. Interestingly, we observed a smaller increase in blood glucose levels in helper mice suggesting that psychological stress and decision-making processes were associated with high glucose consumption by the brain (Fig. 2A). To assess brain energy metabolism during the HBT, we measured a range of metabolites via NMR spectroscopy right after the paradigm. Among the numerous metabolites determined (Fig. 2B and *SI Appendix, Fig. S2 A and B*), we observed a significant increase in the ATP:ADP ratio [an indicator of cellular energy status (22)] specifically in the forebrain of helper mice (Fig. 2C). These results were consistent with a higher brain energy state, likely reflecting the energy-demanding requirements of the task. To corroborate these findings, we analyzed HK expression as a correlate of cellular glucose uptake and consumption (23). The arcuate nucleus of the hypothalamus

361  
362  
363  
364  
365  
366  
367  
368  
369  
370  
371  
372  
373  
374  
375  
376  
377  
378  
379  
380  
381  
382  
383  
384  
385  
386  
387  
388  
389  
390  
391  
392  
393  
394  
395  
396  
397  
398  
399  
400  
401  
402  
403  
404  
405  
406  
407  
408  
409  
410  
411  
412  
413  
414  
415  
416  
417  
418  
419  
420  
421



**Fig. 1.** Mice exhibit prosocial helping behavior toward a restrained conspecific. (A) Schematic view of the HBT consisting of three phases: housing in pairs (for 4 to 6 wk), habituation (4 consecutive days), and test. The image depicts the restraining apparatus, which is divided into two equivalent spaces where a dummy mouse and a cagemate were placed. Free mice were allowed to freely explore the arena, and these can become (a) helpers if they release the conspecific for 5 consecutive days or (b) nonhelpers if they do not. (B) Latency time to door opening when free mice were exposed to an empty restrainer (white circles) or simultaneously exposed to a trapped (blue circles) and dummy mouse (orange circles) ( $n = 6$ ). Door-opening latencies are shown using the median as this variable was not normally distributed. Area under the curve (AUC) is shown as *Inset*. (C) Exploratory activity of nonhelper and helper mice during the HBT as measured by the number of entries into the dummy or trapped quadrants. Note that one mouse from the helper group was excluded from the study as it was identified as an outlier (using the Rout method). (D) Place preference of nonhelper and helper mice during the HBT as measured by the percentage of time spent in the dummy or trapped quadrants. (E) Social interaction time between nonhelper and helper mice with trapped mice during the HBT. Data from a second independent experiment are shown ( $n = 10$ ; seven nonhelper and three helper mice). (F) Latency to door opening of helper mice when exposed to a trapped (blue circles) or dummy mouse (orange circles) in the modified HBT that prevented social contact upon the release of the conspecific ( $n = 5$  to 8). Note the crossover experimental design. Door-opening latencies are shown using the median as this variable was not normally distributed. (G) Assessment of the anxiety-like state of helper mice by the elevated plus maze test. Time spent (%) in closed and open arms was measured after exposure to a dummy or trapped mouse. These are the same mice shown in B. (H) Plasma corticosterone increase (difference between before and after the HBT on day 5 of test) of free mice belonging to nonhelper and helper dyads. Data from a third independent experiment are shown ( $n = 5$  to 9). (I) Correlation of plasma corticosterone increase between free and trapped mice. Data expressed as mean  $\pm$  SEM or otherwise stated. Dots represent individual sample data. Statistical analysis was performed by two-way ANOVA with the Bonferroni multiple comparisons test for (B–D, F, and G), Wilcoxon test for (B *Inset*), unpaired *t* test for (E and H), and Pearson correlation test for (I). \* $P < 0.05$ , \*\* $P < 0.01$ , \*\*\* $P < 0.001$ , and \*\*\*\* $P < 0.0001$ .

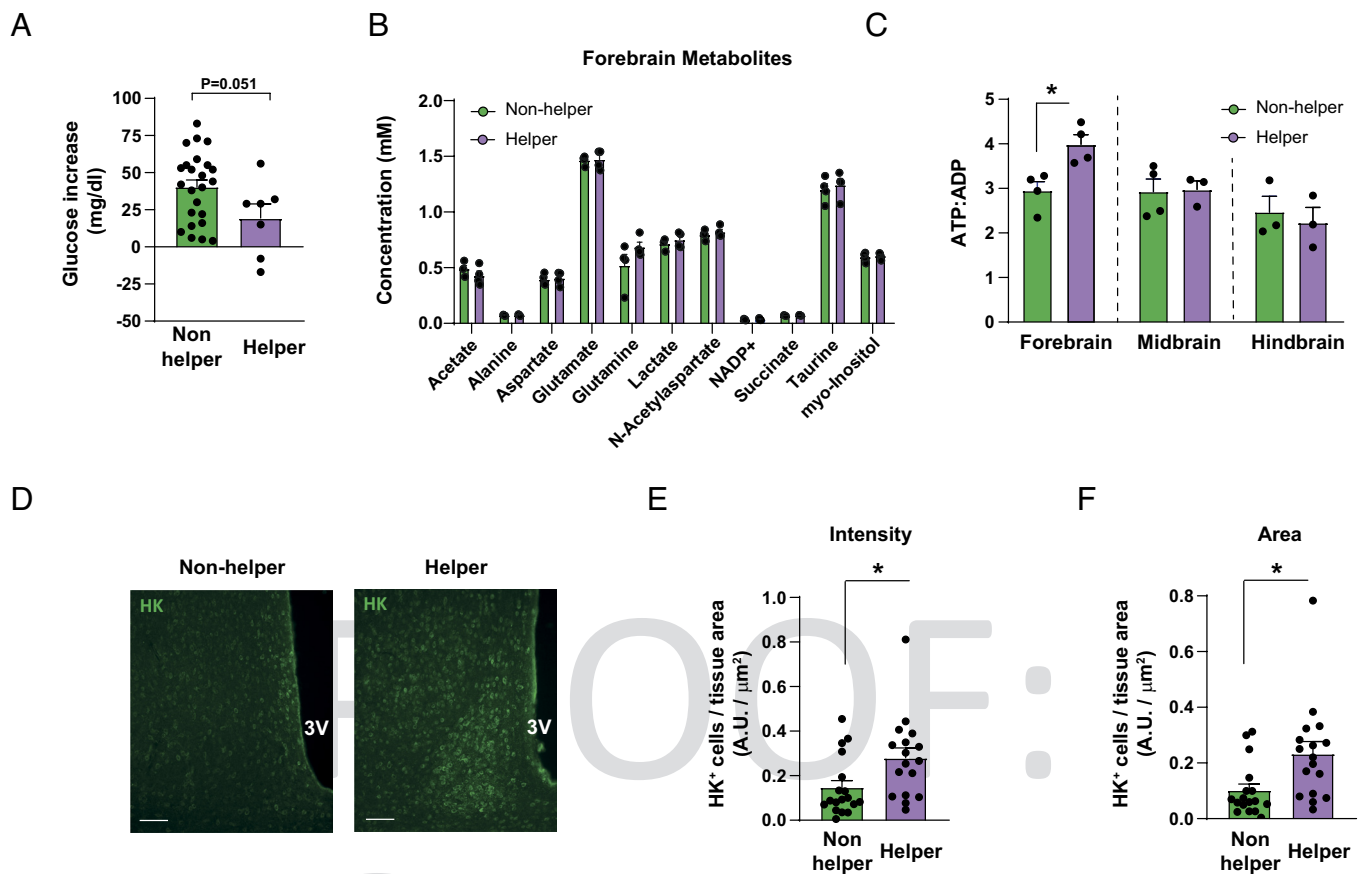
(ARC) is a major forebrain area implicated in glucose sensing and the systemic integration of energy state (24). Therefore, we studied the ARC as a prototypical brain region involved in energy status monitoring. Immunofluorescence analysis of HK in the ARC revealed stronger immunolabeling in helper than in nonhelper mice after performing the HBT (Fig. 2 D–F). Collectively, our data support the notion that emotional contagion and helping behavior are costly energy processes that are fueled by peripheral glucose.

**Food Restriction Hinders Helping Behavior.** Based on these results, we hypothesized that being in a negative energy balance would adversely impact helping behavior in mice. To this aim, we submitted food-restricted (FR) and control ad libitum–fed mice to the HBT (Fig. 3A). Similar to previous experiments (Fig. 1B), fed mice started liberating the trapped conspecific around the sixth day of the test (Fig. 3B). In contrast, FR mice did not open the restrainer door in any of the 10 test sessions (Fig. 3B). To ensure that FR mice were capable of performing the task to

422  
423  
424  
425  
426  
427  
428  
429  
430  
431  
432  
433  
434  
435  
436  
437  
438  
439  
440  
441  
442  
443  
444  
445  
446  
447  
448  
449  
450  
451  
452  
453  
454  
455  
456  
457  
458  
459  
460  
461  
462  
463  
464  
465  
466  
467  
468  
469  
470  
471  
472  
473  
474  
475  
476  
477  
478  
479  
480  
481  
482

483  
484  
485  
486  
487  
488  
489  
490  
491  
492  
493  
494  
495  
496  
497  
498  
499  
500  
501  
502  
503  
504  
505  
506  
507  
508  
509  
510  
511  
512  
513  
514  
515  
516  
517  
518  
519  
520  
521  
522  
523  
524  
525  
526  
527  
528  
529  
530  
531  
532  
533  
534  
535  
536  
537  
538  
539  
540  
541  
542  
543

544  
545  
546  
547  
548  
549  
550  
551  
552  
553  
554  
555  
556  
557  
558  
559  
560  
561  
562  
563  
564  
565  
566  
567  
568  
569  
570  
571  
572  
573  
574  
575  
576  
577  
578  
579  
580  
581  
582  
583  
584  
585  
586  
587  
588  
589  
590  
591  
592  
593  
594  
595  
596  
597  
598  
599  
600  
601  
602  
603  
604



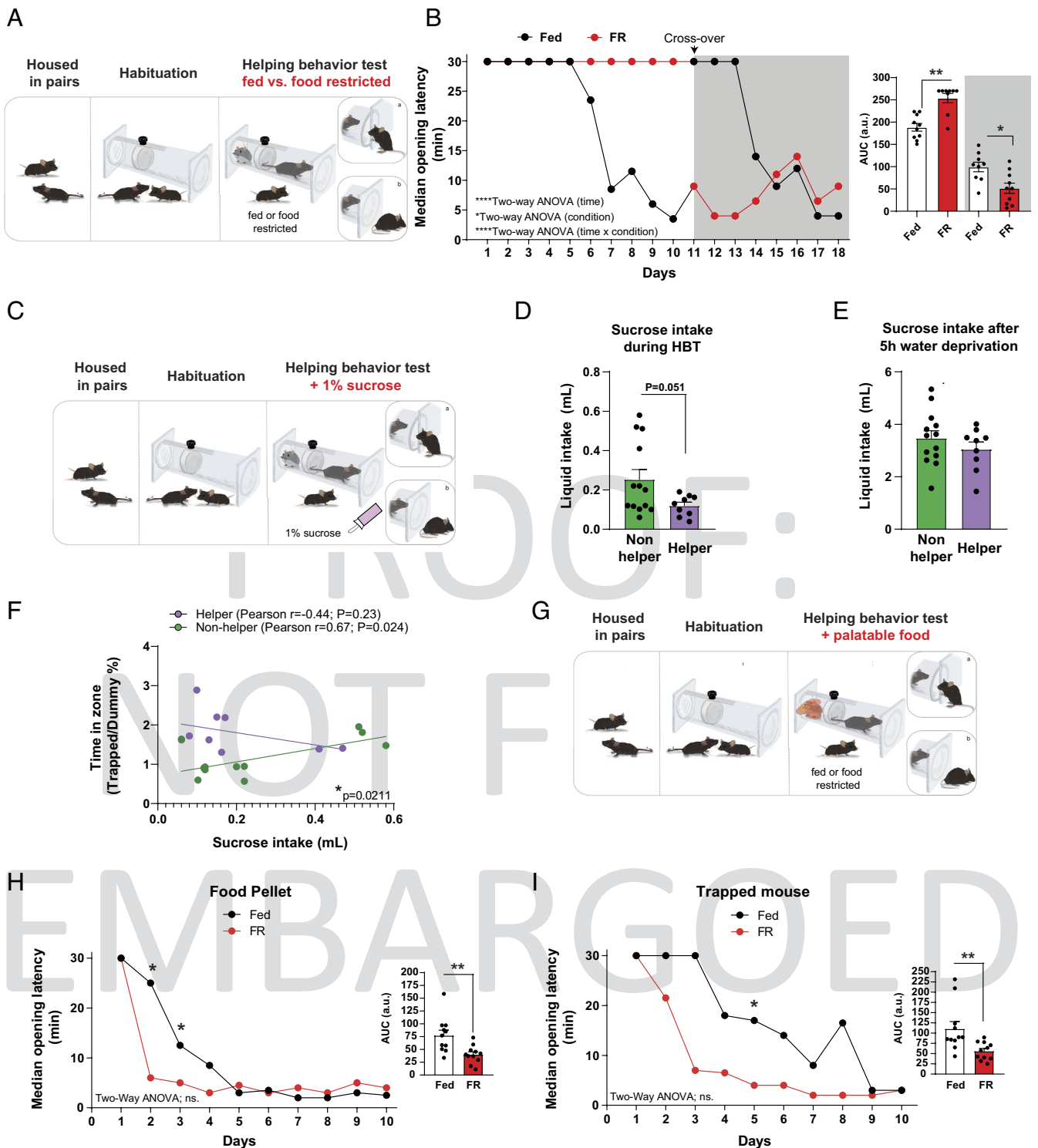
**Fig. 2.** Helping behavior is highly energy demanding. (A) Blood glucose increase (difference between before and after the last session of the HBT) of nonhelper and helper mice exposed to a trapped mouse. A pool of three independent experiments is shown. (B) Concentration of diverse metabolites in the forebrain of nonhelper and helper mice after the HBT. (C) ATP:ADP ratio in the forebrain, midbrain, and hindbrain of nonhelper and helper mice after the HBT. (D) Representative immunofluorescence images showing HK staining in the mediobasal hypothalamus of nonhelper and helper mice after the HBT. 3V: third ventricle. (E) Intensity quantification of HK staining in the mediobasal hypothalamus of nonhelper and helper mice after the HBT. Dots represent brain sections from 3 to 4 mice/group. (F) Area quantification of HK staining in the mediobasal hypothalamus of nonhelper and helper mice after the HBT. Data expressed as mean  $\pm$  SEM. Dots represent individual sample data. Statistical analysis was performed by an unpaired *t* test. \* $P < 0.05$ .

the same extent as controls, a crossover experimental design was implemented. Remarkably, former nonhelper FR mice became helpers once fed ad libitum as evidenced by decreased door-opening latencies across sessions [Fig. 3B, shaded area; median (95% CI) for fed = 12.8 (9.7 to 27.2) min; FR = 24.1 (18.3 to 30.0) min]. The ratio of helper vs. nonhelper mice occurred to a similar extent as in fed mice [38% helpers under fed conditions vs. 41% helpers under FR;  $P = 0.77$ , Fisher exact test;  $n = 21$  (fed) and 26 (FR) male dyads, three independent experiments; *SI Appendix, Fig. S3A*], suggesting that prior exposure to food restriction did not compromise subsequent prosocial behavior. Similarly, food restriction of previously ad libitum-fed mice partially inverted the preceding door-opening trend (Fig. 3B, shaded area). Together, these results indicated that the systemic energy status robustly affects helping behavior in mice ( $F_{(17, 248)} = 3.396$ ;  $P < 0.0001$ ).

Food restriction can affect locomotion, motivation, and exploratory behaviors. Therefore, we undertook studies to assess the potential influence of alterations in these parameters on helping behavior. FR mice did not show differences in locomotor activity (*SI Appendix, Fig. S3B*), speed (*SI Appendix, Fig. S3C*), and number of entries or time spent in trapped- or dummy-defined areas when compared to fed mice (*SI Appendix, Fig. S3D and E*). Together, these results indicated that the energy balance status strongly influences empathically based helping behavior without altering attentiveness toward a trapped cagemate.

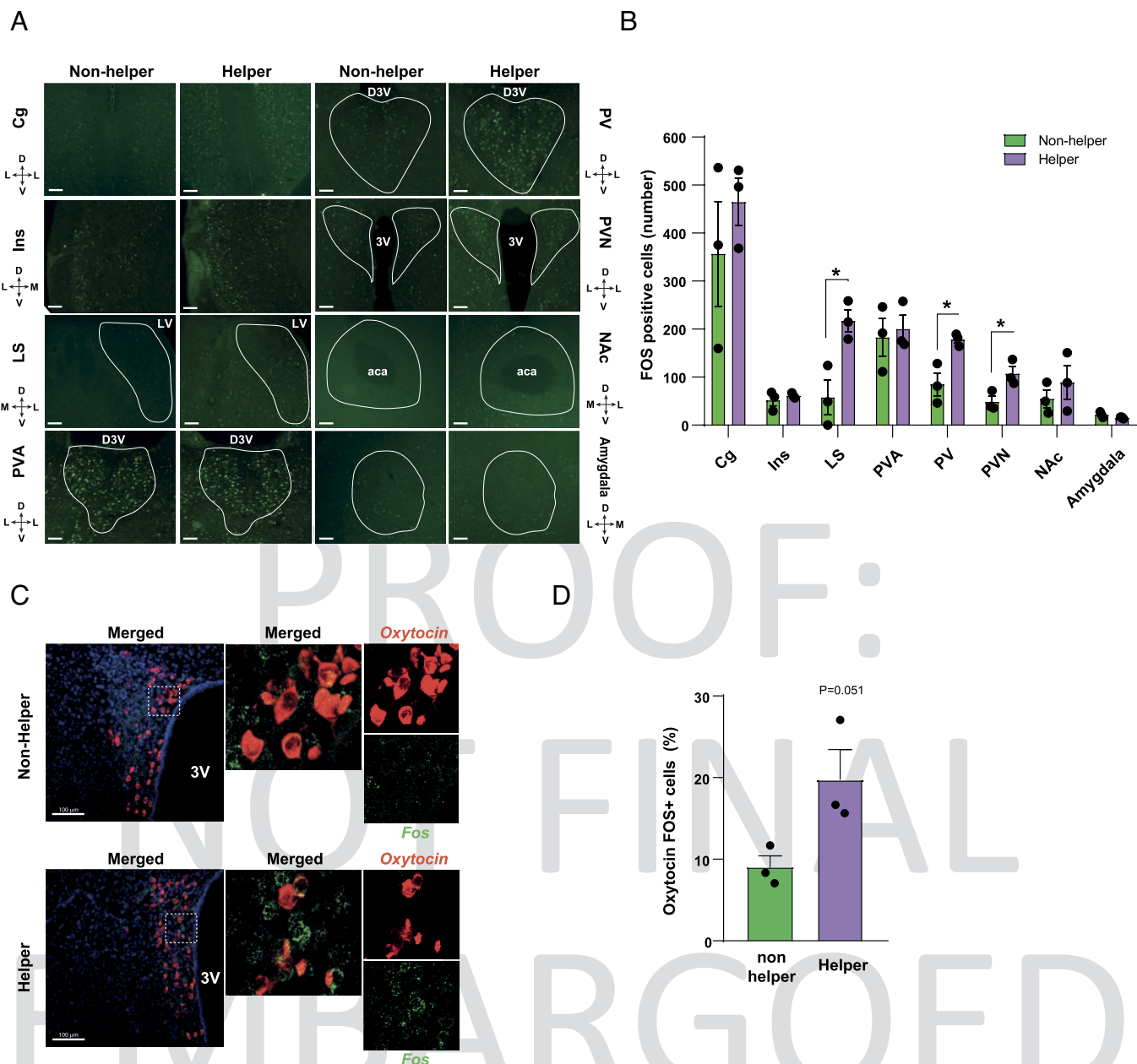
Next, we modified the HBT by the addition of a bottle containing 1% sucrose (Fig. 3C). We reasoned that helper mice would increase sucrose intake to compensate for the task's high energy demand (Fig. 2A–F). Unexpectedly, helper mice showed a trend for less sucrose consumption during the test (Fig. 3D), despite manifesting an equivalent rewarding response to sucrose (Fig. 3E). Under this setting, nonhelper mice exhibited a positive correlation between time spent in the trapped mouse quadrant and sucrose intake (Fig. 3F). In contrast, helper mice did not display this trend (Fig. 3F).

In another set of experiments, the value of high palatable food availability in fed and FR mice was assessed in the context of helping behavior. Here, the HBT was modified by replacing the dummy mouse with a high palatable food pellet (Fig. 3G). Under this setting, free mice under both dietary conditions opened the door for the first time around the third session [mean (95% CI) = 3.2 (2.4 to 4.0) d] (Fig. 3H and I), suggesting that the presence of high palatable food exerted a greater motivation for executing the door-opening action. FR mice showed a faster incentive not only for pellet acquisition than fed mice [Fig. 3H; median (95% CI) for fed = 7.0 (2.5 to 20.4) min; FR = 5.5 (3.2 to 9.6) min] but also for the liberation of trapped conspecifics [Fig. 3I; median (95% CI) for fed = 16.4 (5.3 to 23.9) min; FR = 5.7 (2.0 to 19.8) min]. While 40% of FR mice first liberated their cagemate and afterward obtained the food pellet, only 25% of fed mice liberated the trapped mouse as the first option (*SI Appendix, Fig. S3F*). Overall, the availability of palatable food revealed its greater reward in promoting motivation for door



**Fig. 3.** Food restriction prevents helping behavior. (A) Schematic view of the HBT on fed and food-restricted (FR) mice. (B) Latency to door opening of free mice ad libitum fed (black circles) or FR (red circles) ( $n = 9$  to  $10$ /group). Door-opening latencies are shown using the median as this variable was not normally distributed. Note the crossover experimental design. Area under the curve (AUC) is shown as *Inset*. (C) Schematic view of the modified version of the HBT in which 1% sucrose was available. (D) Sucrose intake in nonhelper and helper mice during the HBT. (E) Sucrose intake after 5-h water deprivation in nonhelper and helper mice. (F) Correlation between time in quadrant and sucrose intake in nonhelper and helper mice during the HBT. Pearson correlation indexes and  $P$  values are shown for each experimental group. Linear regression slopes from both groups were significantly different ( $P = 0.021$ ). (G) Schematic view of the modified version of the HBT in which the dummy mouse was replaced by a high palatable food pellet. (H and I) Latency time to door opening of the (H) food pellet or (I) trapped mouse for ad libitum-fed (black circles) and FR (red circles) mice ( $n = 11$ /group). Door-opening latencies are shown using the median as this variable was not normally distributed. *Insets* represent the area under the curve (AUC). Data expressed as mean  $\pm$  SEM or otherwise stated. Dots represent individual sample data. Statistical analysis was performed by two-way ANOVA with the Bonferroni multiple comparisons test for (B, H, and I), unpaired  $t$  test for (D and E), Mann-Whitney  $U$  test for (B *Inset*, H *Inset*, and I *Inset*), and Pearson correlation test and linear regression for (F). ns: not significant.  $*P < 0.05$ ,  $**P < 0.01$ , and  $****P < 0.0001$ .

727  
728  
729  
730  
731  
732  
733  
734  
735  
736  
737  
738  
739  
740  
741  
742  
743  
744  
745  
746  
747  
748  
749  
750  
751  
752  
753  
754  
755  
756  
757  
758  
759  
760  
761  
762  
763  
764  
765  
766  
767  
768  
769  
770  
771  
772  
773  
774  
775  
776  
777  
778  
779  
780  
781  
782  
783  
784  
785  
786  
787



**Fig. 4.** Helping behavior is associated with the activation of oxytocin neurons in the PVN. (A and B) Representative immunofluorescence images of FOS staining in diverse brain regions from nonhelper and helper mice (A) and quantification (B). Cingulate cortex (Cg), insular cortex (Ins), LS, paraventricular thalamus anterior nuclei (PVA), paraventricular thalamus (PV), paraventricular nucleus of the hypothalamus (PVN), and nucleus accumbens (NAc). Orientation planes are shown (D: dorsal; V: ventral; L: lateral; M: medial). (Scale bar, 50  $\mu$ m.) (C and D) Representative fluorescent in situ hybridization images of oxytocin and Fos in the PVN from nonhelper and helper mice (C) and quantification (D). 3V: third ventricle; D3V: dorsal third ventricle; LV: lateral ventricle; aca: anterior cerebral artery. Data expressed as mean  $\pm$  SEM. Dots represent individual sample data. Statistical analysis was performed by an unpaired *t* test. \**P* < 0.05.

opening. However, once the task was learned, the presence of food favored a prosocial helping behavior in FR mice when compared with ad libitum-fed mice (SI Appendix, Fig. S3F).

**Helping Behavior Associates with Oxytocin Neuron Activation in the Paraventricular Nucleus.** To map the pattern of activation involved in helping behavior, we quantified the immediate early gene marker FOS as an index of neural activity in selected brain areas. To this aim, an extra test session was conducted in which restrainer doors were locked to avoid different time exposures to the trapped mice. Brain regions, previously implicated in prosocial behavior (25), from nonhelper and helper mice, were assessed for FOS immunolabeling. This study revealed enhanced FOS positivity in the paraventricular thalamus (PV), lateral septum (LS), and

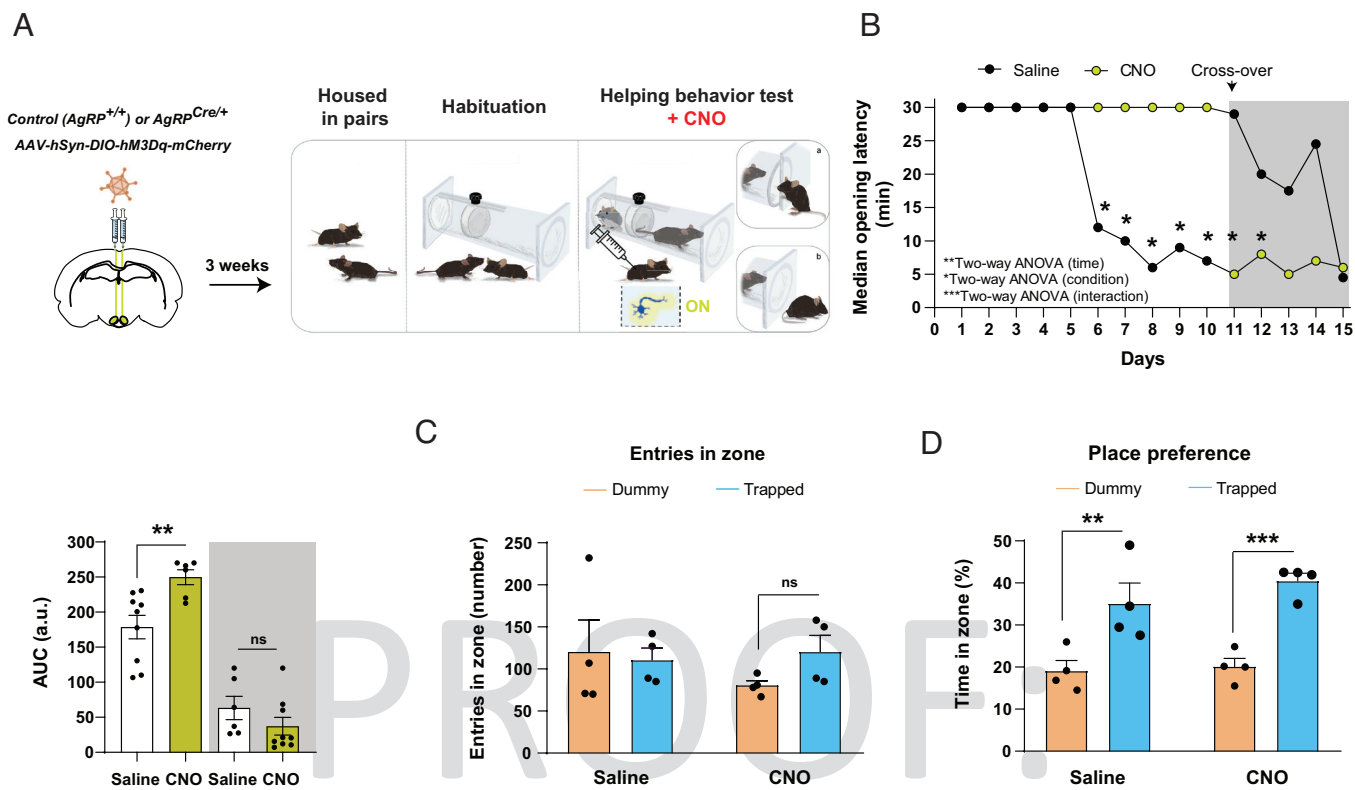
paraventricular nucleus of the hypothalamus (PVN) of helper mice (Fig. 4 A and B). No changes were observed in the cingulate cortex (Cg), insular cortex (Ins), paraventricular thalamus anterior nuclei (PVA), nucleus accumbens (NAc), and amygdala (Fig. 4 A and B).

Oxytocin neurons of the PVN have been associated with empathy, emotion recognition, and social engagement (26). Hence, we examined the activation status of oxytocin neurons after the HBT. Using fluorescent in situ hybridization, we determined that helper mice exhibited higher oxytocin neural activity than nonhelper mice at the end of the HBT (Fig. 4 C and D).

**Activation of Hunger AgRP Neurons Prevents Helping Behavior.** Oxytocin neurons of the PVN receive direct inhibitory inputs from ARC AgRP neurons (27). AgRP neurons are an integral

788  
789  
790  
791  
792  
793  
794  
795  
796  
797  
798  
799  
800  
801  
802  
803  
804  
805  
806  
807  
808  
809  
810  
811  
812  
813  
814  
815  
816  
817  
818  
819  
820  
821  
822  
823  
824  
825  
826  
827  
828  
829  
830  
831  
832  
833  
834  
835  
836  
837  
838  
839  
840  
841  
842  
843  
844  
845  
846  
847  
848

849  
850  
851  
852  
853  
854  
855  
856  
857  
858  
859  
860  
861  
862  
863  
864  
865  
866  
867  
868  
869  
870  
871  
872  
873  
874  
875  
876  
877  
878  
879  
880  
881  
882  
883  
884  
885  
886  
887  
888  
889  
890  
891  
892  
893  
894  
895  
896  
897  
898  
899  
900  
901  
902  
903  
904  
905  
906  
907  
908  
909



**Fig. 5.** Chemogenetic activation of AgRP neurons hinders helping behavior. (A) Schematic view of the experimental design. (B) Latency to door opening of free *AgRP<sup>hM3Dq</sup>* mice injected with either saline ( $n = 9$ ) or chemogenetic ligand CNO ( $n = 6$ ) ( $n = 15/\text{group}$  considering the crossover experimental design). Door-opening latencies are shown using the median as this variable was not normally distributed. Area under the curve (AUC) is shown as *Inset*. (C) Exploratory activity of *AgRP<sup>hM3Dq</sup>* mice injected with either saline or chemogenetic ligand CNO during the HBT, as measured by the number of entries in the dummy or trapped quadrants. Data show a random subset of mice shown in (B). (D) Place preference of *AgRP<sup>hM3Dq</sup>* mice injected with either saline or chemogenetic ligand CNO during the HBT, as measured by the percentage of time spent in the dummy or trapped quadrants. Data show the same subset of mice shown in (C). Data expressed as mean  $\pm$  SEM or otherwise stated. Dots represent individual sample data. Statistical analysis was performed by two-way ANOVA with the Bonferroni multiple comparisons test for (B–D) or Mann–Whitney *U* test (B *Inset*). ns: not significant. \* $P < 0.05$ , \*\* $P < 0.01$ , and \*\*\* $P < 0.001$ .

element of the neurocircuits that crucially control systemic energy balance and metabolism and are strongly activated by energy deficits (28). Furthermore, AgRP neurons have been proposed to also participate in complex behaviors (29–31). Thus, we hypothesized that this population of neurons connects organismal energy status with prosocial helping behavior. To investigate this, we chemogenetically activated AgRP neurons via the viral expression of DREADDs in ad libitum-fed *AgRP<sup>Cre/+</sup>* free mice and submitted them to the HBT (Fig. 5A). Control animals displayed the expected decrease in latency times in liberating the trapped cagemate (Fig. 5B). However, activation of AgRP neurons by the chemogenetic ligand CNO mirrored the behavior observed in FR mice, preventing the helping behavior of free mice (Fig. 5B). Crossover treatment reversed this behavior as, when AgRP neurons were no longer activated, free mice liberated the trapped cagemate [Fig. 5B, shaded area; median (95% CI) for saline = 15.1 (12.6 to 24.5) min; CNO = 27.0 (21.3 to 28.7) min]. However, in contrast to FR mice, former helper mice when subjected to AgRP activation continued liberating the trapped mice. This indicated that stimulation of AgRP neurons in fed mice is unable to reverse the previously acquired prosocial behavior (Fig. 5B) and that this does not completely recapitulate the FR condition. The efficiency of the DREADD system was confirmed by the correct assessment of viral expression in the ARC (SI Appendix, Fig. S4A) and increased food intake (SI Appendix, Fig. S4B) at the end of the test.

AgRP activation has been shown to induce foraging behavior in the absence of food, acting as a competing state for other behavioral tasks (30). To rule out potential interferences with helping

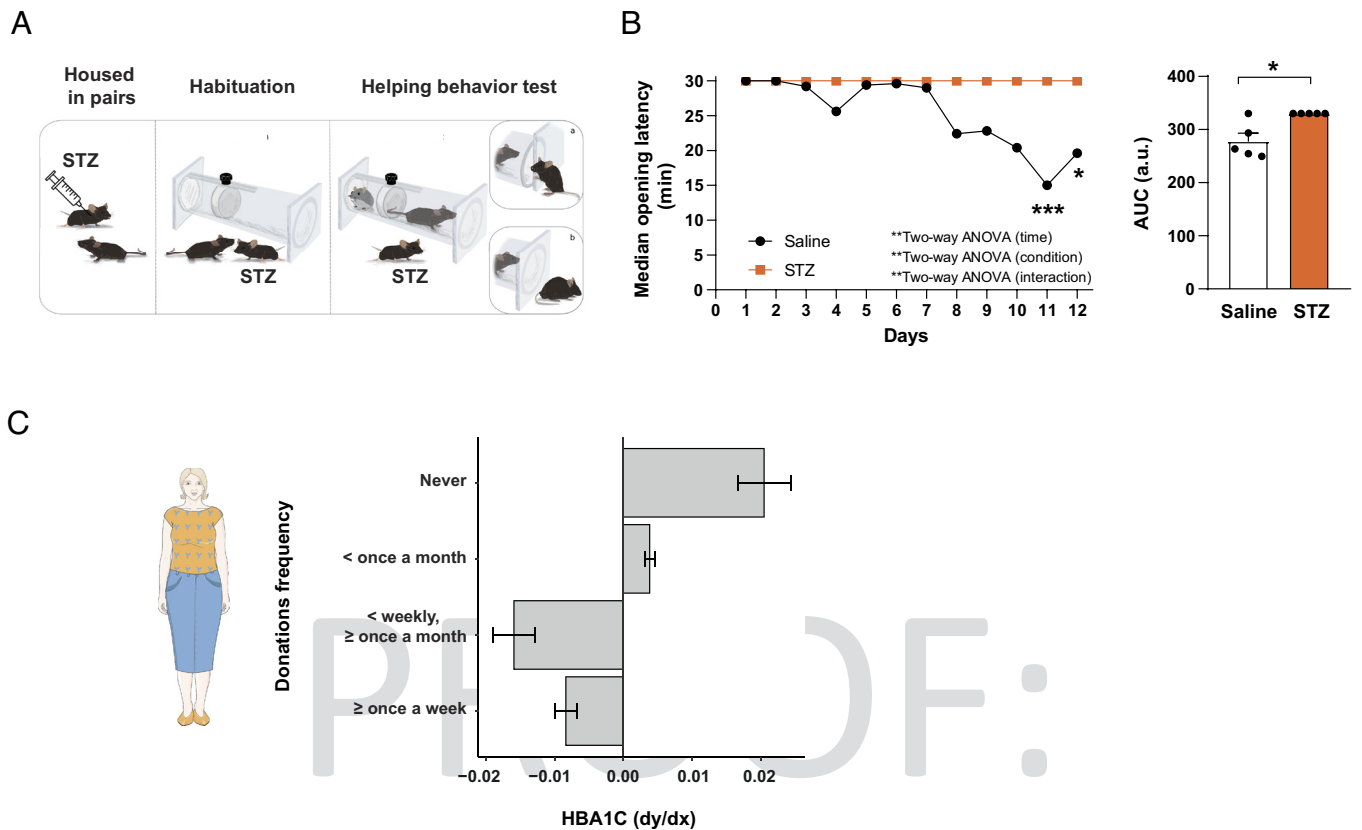
behavior, we assessed exploratory drive (SI Appendix, Fig. S4 C and D) and attentiveness to dummy/trapped mice after AgRP neuron activation (Fig. 5 C and D). None of these parameters were affected by CNO treatment, suggesting a similar motivation to the distress of a conspecific in both groups. The ratio of helper mice occurred to a similar extent in both groups after crossover treatments (control: 43%; CNO: 32%;  $P = 0.10$ , Fisher exact test; control  $n = 19$  male dyads; CNO  $n = 21$ ; three independent experiments; SI Appendix, Fig. S4E).

### Pathological States Affecting Energy Balance Influence Helping Behavior.

Next, we explored the influence of metabolic pathological states on prosocial helping behavior (Fig. 6A). To this aim, we generated STZ-induced diabetes as a disease model of negative energy balance in which mice were ad libitum fed, but glucose utilization was limited due to the lack of insulin. As expected, STZ mice were hyperglycemic compared with saline-treated counterparts (SI Appendix, Fig. S5A). During the HBT, free control mice showed the expected decreasing door-opening latencies, but diabetic mice displayed nonhelping behavior [Fig. 6B; median (95% CI) for saline = 27.3 (20.4 to 29.6) min; STZ = 30.0 (30.0 to 30.0) min]. Saline-injected mice tended to spend more time in the area where trapped mice were located, a behavior that was not observed in STZ mice (SI Appendix, Fig. S5B). Exploratory drive was equivalent between control and STZ mice (SI Appendix, Fig. S5 C–E). However, while the proportion of helpers was around 50% in control mice, this parameter dramatically decreased to 12% in STZ-treated mice

910  
911  
912  
913  
914  
915  
916  
917  
918  
919  
920  
921  
922  
923  
924  
925  
926  
927  
928  
929  
930  
931  
932  
933  
934  
935  
936  
937  
938  
939  
940  
941  
942  
943  
944  
945  
946  
947  
948  
949  
950  
951  
952  
953  
954  
955  
956  
957  
958  
959  
960  
961  
962  
963  
964  
965  
966  
967  
968  
969  
970





**Fig. 6.** Declined helping behavior in pathological conditions associated with negative energy balance. (A) Schematic view of the HBT in STZ-induced diabetic mice. (B) Latency time to door opening of control (saline;  $n = 5$ ) and STZ-diabetic mice ( $n = 5$ ). Door-opening latencies are shown using the median as this variable was not normally distributed. Inset represents the area under the curve (AUC). (C) Derivative (dy/dx) of HbA1c concentrations in relation to the frequency of donations in the Understanding Society dataset. Data expressed as mean  $\pm$  SD. Data expressed as mean  $\pm$  SEM or otherwise stated. Dots represent individual sample data. Statistical analysis was performed by two-way ANOVA with the Bonferroni multiple comparisons test for (B) and Mann-Whitney  $U$  test for (B Inset). \* $P < 0.05$ , \*\* $P < 0.01$ , and \*\*\* $P < 0.001$ .

( $P < 0.0001$ ; Fisher exact test;  $n = 5$  male dyads; *SI Appendix, Fig. S5F*).

To investigate a comparable effect among humans, we estimated the effect of glycated hemoglobin (HbA1c, a surrogate marker of long-term glycemic control) on prosocial behavior (namely charity donation). We used a Likert scale that measured the frequency of donations available in the Understanding Society database, which follows approximately 40,000 households in the United Kingdom ([www.understandingsociety.ac.uk](http://www.understandingsociety.ac.uk)) (20). *SI Appendix, Table S1* summarizes the descriptive statistics of the variables included in the analysis. Our results show a positive association between HbA1c levels and less frequent charity donations, that is, lower HbA1c concentration increases the likelihood of prosocial behaviors (Table 1 and Fig. 6C). Fig. 6C reports the marginal effect of variations in HbA1c for each category of frequency of charity donations (rather than the monetary amount which would depend on individual income). A 1% change in HbA1c increased the probability of nondonating to charity in approximately 2 percentual points (pp) and reduced the likelihood of donating monthly or weekly in around 1.5 and 1 pp, respectively (Table 1 and Fig. 6C). These estimates were retrieved after controlling for age, gender, and its quadratic effects and interactions. We did not control for additional covariates to avoid the potential inclusion of inadequate controls influenced by HbA1c.

## Discussion

Internal states permit the integration of external and internal cues, resulting in appropriate behavioral and physiological responses (1).

How this complex interplay between constantly changing environmental conditions and physiological cues shapes prosocial behaviors remains poorly understood. In the present study, we introduced a reward-independent robust paradigm to investigate helping behavior in mice. We found that acute (AgRP neuron activation) or chronic (food restriction and diabetes) strategies mimicking organismal negative energy balance and hunger prevented helping behavior toward a distressed conspecific.

Prosocial behavior has been observed across the animal kingdom. It is speculated that it emerged from primitive affective circuits supporting maternal care that evolved into other social contexts (5). From the evolutive perspective, prosocial behavior facilitates the biological success of the community by ensuring

**Table 1. Ordered logit estimates of the association of HbA1c on charity donations**

Variable	Coefficient	SD	$P$ value
HbA1c	0.06320****	0.01191	$P < 0.0001$
Age	-0.04180***	0.00508	$P < 0.0001$
Age <sup>2</sup>	0.00028***	0.00005	$P < 0.0001$
Male	-0.52629**	0.19378	$P = 0.007$
Male $\times$ Age	0.02543**	0.00758	$P = 0.001$
Male $\times$ Age <sup>2</sup>	0.00022**	0.00007	$P = 0.002$
No. of observations	10,587	-	-
Wald chi-squared test (6)	349.50****	-	$P < 0.0001$

1093 the endurance of the kin genome (32). However, helping oth- 1154  
1094 ers requires a decision-making process that must be dynamically 1155  
1095 evaluated considering past experiences and environmental and 1156  
1096 interoceptive trade-offs. Under our experimental conditions, a 1157  
1097 primary feature of helper mice was that they exhibited an attenu- 1158  
1098 ated rise in circulating glucose levels during the HBT. It is unlikely 1159  
1099 that this effect was caused by increased stress as stress is associated 1160  
1100 with the development of hyperglycemia. Instead, this observation 1161  
1101 suggested that the helping process was coupled with higher glucose 1162  
1102 consumption. In line with this, we also found that helper indi- 1163  
1103 viduals presented an augmented forebrain ATP:ADP ratio (likely 1164  
1104 reflecting an enhanced cellular energy potential) and increased 1165  
1105 HK expression (a gateway enzyme of glucose metabolism). These 1166  
1106 findings support the idea that the psychological stress of helper 1167  
1107 mice witnessing a conspecific in distress, and the subsequent deci- 1168  
1108 sion-making processes, is associated with high-energy costs for 1169  
1109 the brain. Consistently, helping behavior is less likely to occur 1170  
1110 in situations of negative energy balance. 1171

1111 In rodents, it is believed that the basis of helping behavior is 1172  
1112 emotional contagion (33). The transfer of emotional suffering 1173  
1113 among individuals is complex and multifactorial, including diverse 1174  
1114 external (visual, auditive, and olfactory) and interoceptive factors 1175  
1115 (33, 34). Measures of stress (i.e., circulating corticosterone) in 1176  
1116 focal animals have been used as a proxy for this phenomenon 1177  
1117 (7, 35). In this context, we observed that mice displaying higher 1178  
1118 corticosterone transitions upon exposure to trapped cagemates 1179  
1119 were more reluctant to help than mice with modest responses. 1180  
1120 Blood sampling was conducted in a group counterbalanced man- 1181  
1121 ner following identical protocols and time frames. Hence, the 1182  
1122 observed differences in corticosterone levels are not due to meth- 1183  
1123 odological differences. Our data suggest that helping behavior was 1184  
1124 associated with the induction of mild stress (moderate increase 1185  
1125 in corticosterone levels). This concept is in line with other stud- 1186  
1126 ies proposing that both insufficient and excessive stress limit the 1187  
1127 motivation to act for the benefit of conspecifics (13). 1188

1129 The brain regions and neural identities mediating helping 1189  
1130 behavior are beginning to be elucidated (25), and it is likely that 1190  
1131 diverse brain structures and cell types contribute to this complex 1191  
1132 behavior. Our HBT engaged the neural activity of the PV, LS, and 1192  
1133 PVN of helper mice. Striatal areas, such as the LS, have also been 1193  
1134 reported to be significantly more active in rats that help in-group 1194  
1135 but not out-group conspecifics (11). These regions have been 1195  
1136 classically implicated in emotional and motivational processing, 1196  
1137 including social reward (36–38). Nevertheless, it is important 1197  
1138 to note that helping behavior can progress independently of subse- 1198  
1139 quent social contact as indicated by our data and other reports 1199  
1140 (10, 12, 21). Therefore, these results confirm that the LS may 1200  
1141 be relevant and predictive target regions of helping behavior in 1201  
1142 rodents as opposed to the Cg, Ins, and amygdala which exhibit 1202  
1143 similar activation patterns (between nonhelper and helper mice) 1203  
1144 that could be related to vicarious stress (39). 1204

1145 The PVN is another distinct brain region that was activated in 1205  
1146 helper versus nonhelper individuals. In this area, oxytocin neurons 1206  
1147 represent a prominent neural population that plays crucial roles in 1207  
1148 social cognition and emotional processing (40). Consistently, we 1208  
1149 found that helper mice exhibited an increased number of activated 1209  
1150 oxytocin neurons, suggesting that this neural subset may also be 1210  
1151 implicated in helping behavior. It is relevant to note that oxytocin 1211  
1152 neurons of the PVN receive inputs from ARC AgRP neurons 1212  
1153 (27). AgRP circuits are not only key for appetite control but also 1213  
1154 influence other motivated processes. For example, the promotion 1214  
1155 of a hunger-like state via activation of AgRP neurons hinders a 1215

1154 observations as chemogenetic stimulation of AgRP neurons sup- 1155  
1156 pressed helping behavior. This outcome may be the result of cues 1156  
1157 promoting food foraging, energy preservation, or the prioritization 1157  
1158 of behaviors based on their energy requirements. Together, these 1158  
1159 results reinforce the idea that energetic needs compete with other 1159  
1160 motivations, thus guiding social and prosocial behaviors. 1160

1161 In a series of experiments, mice were submitted to diverse vari- 1161  
1162 ations of the HBT under food restriction conditions (i.e., 1% 1162  
1163 sucrose or food availability). Interestingly, helping behavior was 1163  
1164 associated with reduced sucrose intake and lack of correlation 1164  
1165 between time spent in the trapped mouse quadrant and sucrose 1165  
1166 consumption. These results suggested that perseverance in trying 1166  
1167 to liberate their cagemate was stronger than the caloric reward. 1167  
1168 The presence of palatable food during the HBT also provided 1168  
1169 intriguing results. Food availability greatly sharpened learning 1169  
1170 as denoted by the rapid reduction in latency times to open at 1170  
1171 the early stages of the paradigm. Interestingly, energy-restricted 1171  
1172 mice in the presence of palatable food exhibited a marked helping 1172  
1173 behavior when compared with fed mice. It is likely that under 1173  
1174 these circumstances, self-distress caused by food restriction could 1174  
1175 lead to helping behavior since it has been shown that self-referen- 1175  
1176 tial anticipation of a reward can facilitate self-other differentiation 1176  
1177 of stress (44). 1177

1178 A common characteristic of the experimental energy-deficit 1178  
1179 conditions assessed in this study that prevented helping behavior 1179  
1180 (food restriction, STZ-induced diabetes, and chemogenetics) is 1180  
1181 that they were associated with hypercorticosteronemia (45) and 1181  
1182 AgRP neuron activation (46). This population of neurons expresses 1182  
1183 glucocorticoid receptors (47, 48), and *AgRP* gene expression is 1183  
1184 up-regulated by increased circulating corticosterone concentration 1184  
1185 (49). In line with this, it has also been reported that corticosterone 1185  
1186 modulates synaptic input organization and firing of AgRP neurons 1186  
1187 (50, 51). Collectively, it is reasonable to speculate that conditions 1187  
1188 of energy deficit promote hypercorticosteronemia, which in turn 1188  
1189 activates ARC AgRP neurons and subsequently inhibits oxytocin 1189  
1190 neurons of the PVN (27). This provides a plausible nexus that 1190  
1191 posits AgRP neurons at the crux between energy status and prosocial 1191  
1192 helping behavior. 1192

1193 To understand to what extent our findings in mice could resem- 1193  
1194 ble human biology, we examined biomarker evidence available in 1194  
1195 the UK Understanding Society dataset. Specifically, we estimated 1195  
1196 the effect of HbA1c (a biomarker of long-term glycemic control) 1196  
1197 on the frequency of charity donations (as a measure of prosocial 1197  
1198 behavior). Consistent with our observations in mice, we docu- 1198  
1199 mented a positive association between higher HbA1c concentra- 1199  
1200 tions and less frequent charity donations. These results indicated 1200  
1201 that poorly controlled diabetes may influence prosocial behavior. 1201

1202 In conclusion, in this study, we developed and tested a paradigm 1202  
1203 to assess helping behavior in mice, thus paving the way toward 1203  
1204 a molecular understanding of this biological process via mouse 1204  
1205 genetics and modern system neuroscience. We found that chronic 1205  
1206 and acute variations in internal energy status markedly affect help- 1206  
1207 ing predisposition and that hypothalamic AgRP neurons are at the 1207  
1208 interface of energy balance and helping behavior. 1208

1209 **Data, Materials, and Software Availability.** Original data have been depos- 1209  
1210 ited in Figshare (will be provided after acceptance). 1210

1211 **ACKNOWLEDGMENTS.** We thank Marc Schneeberger (Yale University) for criti- 1211  
1212 cally reading this manuscript. Illustrations were done by DharmaBeren Studio and 1212  
1213 Servier Medical Art. This study was supported by the European Research Council 1213  
1214 under the European Union's Horizon 2020 research and innovation program 1214  
1215 (grant agreement 725004) and the Spanish Ministry of Science and Innovation 1215  
1216 (BFU2015-72486-EXP) to M.C. A.O. was sponsored by a Miguel Servet contract 1216  
1217 (CP19/00083) from Instituto de Salud Carlos III–Fondo Europeo de Desarrollo 1217

1215 Regional. R.H.-T. was supported by a Marie Skłodowska-Curie Actions fellowship  
1216 (H2020-MSCA-IF) and NEUROREG (891247). M.T. was supported by a Beatrice  
1217 de Pinós fellowship (2018 BP00032). S.R. is a recipient of Juan de la Cierva  
1218  
1219

1. S. W. Flavell, N. Gogolla, M. Lovett-Barron, M. Zelikowsky, The emergence and influence of internal states. *Neuron* **110**, S089662732200407X (2022).

2. N. K. Smith, B. A. Grueter, Hunger-driven adaptive prioritization of behavior. *FEBS J.* **289**, 922–936 (2022).

3. J.-L. Raul, Be kind to others: Prosocial behaviours and their implications for animal welfare. *Appl. Anim. Behav. Sci.* **210**, 113–123 (2019).

4. M. Vasconcelos, K. Hollis, E. Nowbahari, A. Kacelnik, Pro-sociality without empathy. *Biol. Lett.* **8**, 910–912 (2012).

5. J. Decety, I.B.-A. Bartal, F. Uzevovsky, A. Knafo-Noam, Empathy as a driver of prosocial behaviour: Highly conserved neurobehavioural mechanisms across species. *Phil. Trans. R Soc. B* **371**, 20150077 (2016).

6. A. Pérez-Manrique, A. Gomila, The comparative study of empathy: Sympathetic concern and empathic perspective-taking in non-human animals: Comparative study of empathy. *Biol. Rev.* **93**, 248–269 (2018).

7. J. P. Burkett *et al.*, Oxytocin-dependent consolation behavior in rodents. *Science* **351**, 375–378 (2016).

8. D. J. Langford *et al.*, Social modulation of pain as evidence for empathy in mice. *Science* **312**, 1967–1970 (2006).

9. M. L. Smith, N. Asada, R. C. Malenka, Anterior cingulate inputs to nucleus accumbens control the social transfer of pain and analgesia. *Science* **371**, 153–159 (2021).

10. N. Sato, L. Tan, K. Tate, M. Okada, Rats demonstrate helping behavior toward a soaked conspecific. *Anim. Cogn.* **18**, 1039–1047 (2015).

11. I. Ben-Ami Bartal *et al.*, Neural correlates of ingroup bias for prosociality in rats. *eLife* **10**, e65582 (2021).

12. I.B.-A. Bartal, J. Decety, P. Mason, Empathy and pro-social behavior in rats. *Science* **334**, 1427–1430 (2011).

13. I. Ben-Ami Bartal *et al.*, Anxiolytic treatment impairs helping behavior in rats. *Front. Psychol.* **7**, 850 (2016), 10.3389/fpsyg.2016.00850.

14. Q. Tong, C.-P. Ye, J. E. Jones, J. K. Elmquist, B. B. Lowell, Synaptic release of GABA by AgRP neurons is required for normal regulation of energy balance. *Nat. Neurosci.* **11**, 998–1000 (2008).

15. M. Ahmadlou *et al.*, A cell type-specific cortico-subcortical brain circuit for investigatory and novelty-seeking behavior. *Science* **372**, eabe9681 (2021).

16. A. A. Walf, C. A. Frye, The use of the elevated plus maze as an assay of anxiety-related behavior in rodents. *Nat. Protoc.* **2**, 322–328 (2007).

17. I. Arganda-Carreeras, Trainable Weka Segmentation: A machine learning tool for microscopy pixel classification (R. Murphy Ed.). *Bioinformatics* **33**, 2424–2426 (2017).

18. I. Barba *et al.*, High-fat diet induces metabolic changes and reduces oxidative stress in female mouse hearts. *J. Nutr. Biochem.* **40**, 187–193 (2017).

19. C. Beltran *et al.*, Enhancing glycolysis protects against ischemia-reperfusion injury by reducing ROS production. *Metabolites* **10**, 132 (2020).

20. University Of Essex IFS, United Kingdom Household Longitudinal Study Understanding Society: Waves 1, 2008–Understanding Society: Waves 1–11, 2009–2020 and Harmonised BHPS: Waves 1–18, 1991–2009. *UK Data Service* (2022), 10.5255/UKDA-SN-6614-16.

21. S. S. Cox, C. M. Reichel, Rats display empathic behavior independent of the opportunity for social interaction. *Neuropsychopharmacol* **45**, 1097–1104 (2020).

22. J. Berg, Y. P. Hung, G. Yellen, A genetically encoded fluorescent reporter of ATP:ADP ratio. *Nat. Methods* **6**, 161–166 (2009).

23. I. Lundgaard *et al.*, Direct neuronal glucose uptake heralds activity-dependent increases in cerebral metabolism. *Nat. Commun.* **6**, 6807 (2015).

24. A. Jais, J. C. Brüning, Arcuate nucleus-dependent regulation of metabolism - pathways to obesity and diabetes mellitus. *Endocr. Rev.* **bnab025** (2021).

Formación (FJCI-2016-28911) and Incorporación (IJC2018-037341-I) programs  
from the Spanish Ministry of Science and Innovation. This work was carried out  
in part at the Esther Koplowitz Centre.

25. S. Sivasevalchandran, E. L. Acland, S. Abdallah, L. J. Martin, Behavioral and mechanistic insight into rodent empathy. *Neurosci. Biobehav. Rev.* **91**, 130–137 (2018).

26. E. Paradiso, V. Gazzola, C. Keysers, Neural mechanisms necessary for empathy-related phenomena across species. *Curr. Opin. Neurobiol.* **68**, 107–115 (2021).

27. D. Atasoy, J. N. Betley, H. H. Su, S. M. Sternson, Deconstruction of a neural circuit for hunger. *Nature* **488**, 172–177 (2012).

28. A. Jais, J. C. Brüning, Arcuate nucleus-dependent regulation of metabolism—pathways to obesity and diabetes mellitus. *Endocr. Rev.* **43**, 314–328 (2022).

29. A. L. Alhadeff *et al.*, A neural circuit for the suppression of pain by a competing need state. *Cell* **173**, 140–152.e15 (2018).

30. C. J. Burnett *et al.*, Hunger-driven motivational state competition. *Neuron* **92**, 187–201 (2016).

31. M. O. Dietrich, M. R. Zimmer, J. Bober, T. L. Horvath, Hypothalamic AgRP neurons drive stereotypic behaviors beyond feeding. *Cell* **160**, 1222–1232 (2015).

32. W. D. Hamilton, The genetical evolution of social behaviour I. *J. Theor. Biol.* **7**, 1–16 (1964).

33. C. Keysers, E. Knapska, M. A. Moita, V. Gazzola, Emotional contagion and prosocial behavior in rodents. *Trends Cogn. Sci.* **28**, S1364661322001115 (2022).

34. S. S. Khalsa *et al.*, Interoception and mental health: A roadmap. *Biol. Psychiatr. Cogn. Neurosci. Neuroimaging* **3**, 501–513 (2018).

35. Y. Kiyokawa, S. Hiroshima, Y. Takeuchi, Y. Mori, Social buffering reduces male rats' behavioral and corticosterone responses to a conditioned stimulus. *Hormones Behav.* **65**, 114–118 (2014).

36. G. Dölen, A. Darvishzadeh, K. W. Huang, R. C. Malenka, Social reward requires coordinated activity of nucleus accumbens oxytocin and serotonin. *Nature* **501**, 179–184 (2013).

37. L. A. Gunaydin *et al.*, Natural neural projection dynamics underlying social behavior. *Cell* **157**, 1535–1551 (2014).

38. A. Besnard, F. Leroy, Top-down regulation of motivated behaviors via lateral septum sub-circuits. *Mol. Psychiatry* **27**, 3119–3128 (2022), 10.1038/s41380-022-01599-3.

39. S. Keum, H.-S. Shin, Neural basis of observational fear learning: A potential model of affective empathy. *Neuron* **104**, 78–86 (2019).

40. P. Wang *et al.*, Neural functions of hypothalamic oxytocin and its regulation. *ASN Neuro* **14**, 175909142211007 (2022).

41. N. Goldstein *et al.*, Hypothalamic neurons that regulate feeding can influence sleep/wake states based on homeostatic need. *Curr. Biol.* **28**, 3736–3747.e3 (2018).

42. C. J. Burnett *et al.*, Need-based prioritization of behavior. *eLife* **8**, e44527 (2019).

43. S. L. Padilla *et al.*, Agouti-related peptide neural circuits mediate adaptive behaviors in the starved state. *Nat. Neurosci.* **19**, 734–741 (2016).

44. P. L. Lockwood, The anatomy of empathy: Vicarious experience and disorders of social cognition. *Behav. Brain Res.* **311**, 255–266 (2016).

45. H. Makimura *et al.*, Role of glucocorticoids in mediating effects of fasting and diabetes on hypothalamic gene expression. *BMC Physiol.* **3**, 5 (2003).

46. J. Xu *et al.*, Genetic identification of leptin neural circuits in energy and glucose homeostases. *Nature* **556**, 505–509 (2018).

47. S. Hisano *et al.*, Localization of glucocorticoid receptor in neuropeptide Y-containing neurons in the arcuate nucleus of the rat hypothalamus. *Neurosci. Lett.* **95**, 13–18 (1988).

48. J. N. Campbell *et al.*, A molecular census of arcuate hypothalamus and median eminence cell types. *Nat. Neurosci.* **20**, 484–496 (2017).

49. X.-Y. Lu *et al.*, Diurnal rhythm of agouti-related protein and its relation to corticosterone and food intake. *Endocrinology* **143**, 3905–3915 (2002).

50. E. Gyengesi *et al.*, Corticosterone regulates synaptic input organization of POMC and NPY/AgRP neurons in adult mice. *Endocrinology* **151**, 5395–5402 (2010).

51. R. J. Perry *et al.*, Leptin's hunger-suppressing effects are mediated by the hypothalamic-pituitary-adrenocortical axis in rodents. *Proc. Natl. Acad. Sci. U.S.A.* **116**, 13670–13679 (2019).

# Author Query Form

Query reference	Query
Q1	Please confirm the edit to the article title.
Q2	Your article will appear in the following section of the journal: Biological Sciences (Psychological and Cognitive Sciences). Please confirm that this is correct.
Q3	Please review 1) the author affiliation and footnote symbols, 2) the order of the author names, and 3) the spelling of all author names, initials, and affiliations and confirm that they are correct as set.
Q4	Please note that the spelling of the following author names in the manuscript differs from the spelling provided in the article metadata: Mehdi Boudjadja. The spelling provided in the manuscript has been retained; please confirm.
Q5	Per PNAS style post codes are required in all affiliations. Please provide the same in affiliations a to g.
Q6	There is no provided division/section/unit for affiliations a to g. Please provide if this is available.
Q7	There is no provided department/section/unit for affiliations a to d, f, and g. Please provide if this is available.
Q8	Please review the author contribution footnote carefully. Ensure that the information is correct and that the correct author initials are listed. Note that the order of author initials matches the order of the author line per journal style. You may add contributions to the list in the footnote; however, funding may not be an author's only contribution to the work.
Q9	You have chosen to publish your PNAS article with the delayed open access option under a CC BY-NC-ND license. Your article will be freely accessible 6 months after publication, without a subscription; for additional details, please refer to the PNAS site: <a href="https://www.pnas.org/authors/fees-and-licenses">https://www.pnas.org/authors/fees-and-licenses</a> . Please confirm this is correct.
Q10	Claims of priority or primacy are not allowed, per PNAS policy ( <a href="https://www.pnas.org/authors/submitting-your-manuscript">https://www.pnas.org/authors/submitting-your-manuscript</a> ); therefore, the term "novel" in the original text "they provide novel insights" has been deleted. If you have concerns with this course of action, please reword the sentence or explain why the deleted term should not be considered a priority claim and should be reinstated.
Q11	Any alterations between capitalization and/or italics in genetic terminology have been retained per the original manuscript. Please confirm that all genetic terms have been formatted properly throughout.
Q12	Certain compound terms are hyphenated when used as adjectives and unhyphenated when used as nouns. This style has been applied consistently throughout where (and if) applicable.
Q13	Would you consider changing the section head "Animals and Husbandry" to "Animal Husbandry"?
Q14	Abbreviations must be used at least twice in the main text; as such, UKHLS and i.p. have been deleted.
Q15	Please describe the significance of the ns used in the artwork of Fig. 1 in its legend.
Q16	In the description of Fig. 1, double asterisk symbol is defined but do not appear in the panel. Should those definitions be deleted from the legend?
Q17	PNAS articles should be accessible to a broad scientific audience; as such, please spell out the abbreviations ATP, ADP, ARC, EDTA, ELISA, FOS, TPS, FR, and CNO.
Q18	In the description of Fig. 3, ns and four asterisk symbol are defined but do not appear in the panel. Should those definitions be deleted from the legend?
Q19	In the description of Fig. 6, double asterisk symbol is defined but do not appear in the panel. Should those definitions be deleted from the legend?
Q20	Please provide the significance of the asterisk symbols used in Table 1.
Q21	Claims of priority or primacy are not allowed, per PNAS policy ( <a href="https://www.pnas.org/authors/submitting-your-manuscript">https://www.pnas.org/authors/submitting-your-manuscript</a> ); therefore, the term "new" in the original text "new, reward-independent robust paradigm" has been deleted. If you have concerns with this course of action, please reword the sentence or explain why the deleted term should not be considered a priority claim and should be reinstated.

Q22	Claims of priority or primacy are not allowed, per PNAS policy ( <a href="https://www.pnas.org/authors/submitting-your-manuscript">https://www.pnas.org/authors/submitting-your-manuscript</a> ); therefore, the term "new" in the original text "we developed and tested a new paradigm" has been deleted. If you have concerns with this course of action, please reword the sentence or explain why the deleted term should not be considered a priority claim and should be reinstated.
Q23	All data shared in this article that do not appear within the main text or SI Appendix, including your own data that have been deposited to an external source, must be cited in text with an entry in the reference list. For each new reference, please provide the following information: 1) author names, 2) data/page title, 3) database name, 4) a direct URL to the data, 5) the date on which the data were accessed or deposited (not the release date), and 6) where the new reference citation should be added in the main text and/or data availability statement. Please provide accession number for the Figshare database.
Q24	Abbreviations must be used at least twice in the main text; as such, ERC, ISCIII, and FEDER have been deleted in the acknowledgments section.
Q25	If you have any changes to your Supporting Information (SI) file(s), please provide revised, ready-to-publish replacement files without annotations.