



LJMU Research Online

Deason, AJ, Fattahi, A, Belokurov, V, Wyn Evans, N, Grand, RJJ, Marinacci, F and Pakmor, R

The local high-velocity tail and the Galactic escape speed

<http://researchonline.ljmu.ac.uk/id/eprint/19328/>

Article

Citation (please note it is advisable to refer to the publisher's version if you intend to cite from this work)

Deason, AJ, Fattahi, A, Belokurov, V, Wyn Evans, N, Grand, RJJ, Marinacci, F and Pakmor, R (2019) The local high-velocity tail and the Galactic escape speed. *Monthly Notices of the Royal Astronomical Society*, 485 (3). pp. 3514-3526. ISSN 0035-8711

LJMU has developed **LJMU Research Online** for users to access the research output of the University more effectively. Copyright © and Moral Rights for the papers on this site are retained by the individual authors and/or other copyright owners. Users may download and/or print one copy of any article(s) in LJMU Research Online to facilitate their private study or for non-commercial research. You may not engage in further distribution of the material or use it for any profit-making activities or any commercial gain.

The version presented here may differ from the published version or from the version of the record. Please see the repository URL above for details on accessing the published version and note that access may require a subscription.

For more information please contact researchonline@ljmu.ac.uk

<http://researchonline.ljmu.ac.uk/>

The local high-velocity tail and the Galactic escape speed

Alis J. Deason¹,¹★ Azadeh Fattahi¹, Vasily Belokurov², N. Wyn Evans²,
Robert J. J. Grand³, Federico Marinacci⁴ and Rüdiger Pakmor³

¹*Institute for Computational Cosmology, Department of Physics, University of Durham, South Road, Durham DH1 3LE, UK*

²*Institute of Astronomy, Madingley Road, Cambridge CB3 0HA, UK*

³*Max-Planck-Institut für Astrophysik, Karl-Schwarzschild-Str. 1, D-85748, Garching, Germany*

⁴*Harvard-Smithsonian Center for Astrophysics, 60 Garden St., Cambridge, MA 02138, USA*

Accepted 2019 February 28. Received 2019 February 21; in original form 2019 January 7

ABSTRACT

We model the fastest moving ($v_{\text{tot}} > 300 \text{ km s}^{-1}$) local ($D \lesssim 3 \text{ kpc}$) halo stars using cosmological simulations and six-dimensional *Gaia* data. Our approach is to use our knowledge of the assembly history and phase-space distribution of halo stars to constrain the form of the high-velocity tail of the stellar halo. Using simple analytical models and cosmological simulations, we find that the shape of the high-velocity tail is strongly dependent on the velocity anisotropy and number density profile of the halo stars – highly eccentric orbits and/or shallow density profiles have more extended high-velocity tails. The halo stars in the solar vicinity are known to have a strongly radial velocity anisotropy, and it has recently been shown the origin of these highly eccentric orbits is the early accretion of a massive ($M_{\text{star}} \sim 10^9 M_{\odot}$) dwarf satellite. We use this knowledge to construct a prior on the shape of the high-velocity tail. Moreover, we use the simulations to define an appropriate outer boundary of $2r_{200}$, beyond which stars can escape. After applying our methodology to the *Gaia* data, we find a local ($r_0 = 8.3 \text{ kpc}$) escape speed of $v_{\text{esc}}(r_0) = 528_{-25}^{+24} \text{ km s}^{-1}$. We use our measurement of the escape velocity to estimate the total Milky Way mass, and dark halo concentration: $M_{200,\text{tot}} = 1.00_{-0.24}^{+0.31} \times 10^{12} M_{\odot}$, $c_{200} = 10.9_{-3.3}^{+4.4}$. Our estimated mass agrees with recent results in the literature that seem to be converging on a Milky Way mass of $M_{200,\text{tot}} \sim 10^{12} M_{\odot}$.

Key words: Galaxy: fundamental parameters – Galaxy: kinematics and dynamics.

1 INTRODUCTION

Stars with extreme velocities have often been studied in the Milky Way. Akin to our fascination with the most distant, most massive, most luminous – astronomers are keen to find the fastest stars in the Galaxy (e.g. Hattori et al. 2018; Marchetti, Rossi & Brown 2018; Shen et al. 2018). However, this pursuit is more than just a record breaking exercise. The fastest moving stars can be related to exotic mechanisms, such as dynamical interactions with the central super massive black hole (e.g. Hills 1988; Yu & Tremaine 2003; Brown et al. 2005), dynamical interactions between massive stars (e.g. Poveda, Ruiz & Allen 1967; Leonard & Duncan 1990), supernova explosions in binary systems (e.g. Blaauw 1961; Portegies Zwart 2000) and even ejection from the Large Magellanic Cloud (e.g. Boubert & Evans 2016). While these mechanisms often produce stars that are unbound from the Galaxy, the fastest ‘garden variety’

stars are the most prevalent: namely, the high-velocity tail of the stellar halo.

The extreme halo stars are bound to the Galaxy, but represent the lowest energy orbits that are capable of reaching the largest extents in the Milky Way. It is for this reason that this population has garnered so much attention: the fastest halo stars in the local vicinity can probe the potential out to the virial radius of the Galaxy. Indeed, the high-velocity stars in the solar neighbourhood present one of the only local measures of the gravitational potential at large radii. Historical measurements of the local escape velocity date back to the early 1980s, in the period where the existence of massive dark matter haloes was gaining traction in the astronomy community (e.g. Faber & Gallagher 1979; Rubin, Ford & Thonnard 1980). These early works generally estimated a lower limit on the escape speed by identifying the highest velocity stars in the solar neighbourhood (Caldwell & Ostriker 1981; Alexander 1982; Sandage & Fouts 1987; Carney, Latham & Laird 1988). The seminal work by Leonard & Tremaine (1990, hereafter LT90) extended this formalism to produce statistical models for the distribution of stars near the escape speed; this advancement was needed to properly

* E-mail: alis.j.deason@durham.ac.uk

model limited sample sizes that may not include stars that reach the escape velocity, and/or could include spurious measurements due to observational errors. [LT90](#) apply their formalism to $N \sim 30$ high-velocity stars with accurate radial velocity measurements and inferred a local escape velocity in the range 450–650 km s⁻¹.

Two decades later, works by [Smith et al. \(2007\)](#) and [Piffl et al. \(2014\)](#) applied the [LT90](#) method to the RAAdial Velocity Experiment (RAVE) survey data, finding a local escape speed in the range ~ 500 – 600 km s⁻¹. These later works used cosmological simulations to help model the high-velocity tail of their stellar halo sample. A similar approach was used in [Williams et al. \(2017\)](#) to constrain the escape velocity over a wider radial range using Sloan Digital Sky Survey data. In agreement with [Smith et al. \(2007\)](#) and [Piffl et al. \(2014\)](#), they find a local escape velocity of ~ 520 km s⁻¹. Most recently, [Monari et al. \(2018\)](#) exploited the new six-dimensional data from the *Gaia* mission ([Gaia Collaboration et al. 2016, 2018](#)) to constrain the local escape speed to be $v_{\text{esc}}(r_0) = 580 \pm 63$ km s⁻¹, where $r_0 = 8.3$ kpc. [Monari et al. \(2018\)](#) use the same methodology as [Piffl et al. \(2014\)](#), but find a larger escape speed, suggesting that the previous constraints from line-of-velocities only may have underestimated the escape speed (albeit the uncertainties are large).

The above analyses suffer from several potential systematic limitations. First, it is not guaranteed that the tail of the velocity distribution is occupied all the way to the escape velocity. Thus, if there is any truncation in the stellar velocities, the escape speed will be underestimated. Secondly, although it is only the high-velocity tail of the escape speed that needs to be modelled, the stellar distribution need not be smooth and relaxed. Indeed, the presence of substructure in the high-velocity tail could significantly bias the results. Thirdly, the estimates are very sensitive to the fastest stars in the sample, so the presence of interlopers (such as unbound stars) or statistical outliers in the data could also affect the derived escape velocity. Despite these apparent shortcomings, there is also warrant for significant optimism. The latest *Gaia* data have revealed that the inner stellar halo is dominated by the material from one massive ($M_{\text{star}} \sim 10^9 M_{\odot}$) dwarf galaxy accreted 8–10 Gyr ago ([Belokurov et al. 2018](#); [Deason et al. 2018](#); [Haywood et al. 2018](#); [Helmi et al. 2018](#)). Thus, there is reason to believe that the stellar material, or at least the majority of it, is well phase-mixed. In addition, the highly eccentric orbits of the stars associated with this massive dwarf are more likely (i.e. relative to more circular orbits) to traverse significant distances in the Galaxy, and can potentially probe out to the very outskirts of the Milky Way. With this in mind, the focus of this contribution is to re-formulate the [LT90](#) analysis using these new observational advancements.

The escape velocity provides a direct measure of the Galactic potential, and hence a common goal of constraining this fundamental parameter is to provide an estimate of the total Milky Way mass. Despite decades of study, the mass of the Milky Way has remained a contentious issue in the literature (see [Bland-Hawthorn & Gerhard 2016](#), section 6.3 for a recent review), with quoted mass estimates varying by a factor of 2–3. Recent progress since the second *Gaia* data release has perhaps relieved some of this tension, with estimates generally ranging from 1 to $1.5 \times 10^{12} M_{\odot}$ (e.g. [Eadie & Jurić 2018](#); [Malhan & Ibata 2018](#); [Watkins et al. 2018](#); [Callingham et al. 2019](#); [Posti & Helmi 2019](#); [Vasiliev 2019](#)). However, the significance of this parameter warrants that our community strives to pin down the mass with much greater precision and accuracy. Indeed, the total Milky Way mass is essential to place our Galaxy in context with the general galaxy population, and, moreover, the halo mass is central to

our understanding of the Λ CDM paradigm (e.g. [Purcell & Zentner 2012](#); [Wang et al. 2012](#)).

In this study, we use a combination of analytical models, cosmological simulations and *Gaia* data to model the high-velocity tail of the local stellar halo. Through our analysis we provide a new estimate of the local escape velocity, and, by extension, the total Milky Way mass. The paper is arranged as follows. Section 2 provides the theoretical background to the form of the high-velocity tail, and introduces the [LT90](#) formalism. In Section 3, we explore the high-velocity tails of accreted stars in the Auriga simulations. We use the simulations to place a prior on the form of the high-velocity tail, which is appropriate for the Milky Way. We apply our formalism to *Gaia* data release 2 (DR2) in Section 4, and provide a new estimate of the local escape speed. In Section 5, we relate the escape speed to the total Milky Way mass. Finally, in Section 6 we summarize the main findings of our work.

2 THEORETICAL BACKGROUND

In this work, we use simple models for the velocity distribution of stars near the escape speed. This formalism was first presented in [LT90](#), and later extended and adapted by [Smith et al. \(2007\)](#) and [Piffl et al. \(2014\)](#). Here, we provide a brief recap of the [LT90](#) method, and provide some analytical insight into the form of the high-velocity tails.

2.1 Leonard & Tremaine approximation

[LT90](#) proposed a distribution of space velocities appropriate for a sample of high-velocity stars near the Sun:

$$f(v|v_e, k) \propto (v - v_e)^k \quad (1)$$

for $v < v_e$. Here, v is the total velocity and v_e is the escape velocity. This form only needs to be valid near $v \sim v_e$, and, when f is a power law of energy, equation (1) can be thought of as the first term in a Taylor expansion of f near v_e . Here, k is a free parameter, and, as we will show in this work, it is strongly dependent on the form of the underlying distribution function. Note that [Smith et al. \(2007\)](#) use a slightly different distribution function, namely $f(v|v_e, k) \propto (v_e^2 - v^2)^k$; however we choose to adopt the original [LT90](#) formalism as this provides a better description of the high-velocity tails in the simulated haloes (see also [Piffl et al. 2014](#), section 3). The [LT90](#) formalism assumes that the stellar system is described by an Ergodic distribution function, and is thus well-mixed in phase-space. Moreover, this approach assumes that the stellar velocities extend all the way to v_e . Clearly, these assumptions are not necessarily true, and in the following section(s) we will discuss these potential limitations in light of recent observations of the Milky Way halo, and in the context of cosmological simulations.

2.2 Maximum likelihood analysis

In order to constrain v_e and k from a local sample of stars we employ a maximum likelihood method:

$$\mathcal{L} = \prod_{i=1}^N f(v_i|v_e, k). \quad (2)$$

In practice, we use Bayes' theorem to derive the probability distributions of the model parameters:

$$P(v_e, k|v_{i=1, \dots, N}) = \frac{P(v_e)P(k) \prod_{i=1}^N f(v_i|v_e, k)}{\int \int P(v_e)P(k) \prod_{i=1}^N f(v_i|v_e, k) dv_e dk}. \quad (3)$$

In the following section, we introduce an optimal prior $P(k)$ based on cosmological simulations. This approach was also taken by Smith et al. (2007) and Piffl et al. (2014). However, in this work we make use of recent breakthroughs in our understanding of the local halo velocity distribution to form a prior tailored towards our own Galaxy. We find, like previous authors, that a prior on k is essential, especially when faced with small number statistics and/or significant velocity errors. Finally, like LT90, we adopt a (weak) prior on v_e , $P(v_e) \propto 1/v_e$, which is appropriate for a variable that ranges from 0 to ∞ (Kendall & Stuart 1977).

Equation (1) is only valid near v_e , so our analysis is performed on stars with $v > v_{\min}$. Following Kochanek (1996) and Smith et al. (2007) we adopt $v_{\min} = 300 \text{ km s}^{-1}$; this cut is chosen to minimize contamination from disc stars, and restrict ourselves to stars close to v_e . However, we note that adopting a slightly lower threshold, $v_{\min} = 250 \text{ km s}^{-1}$ (cf. Monari et al. 2018), does not significantly affect our results.

2.2.1 Radial dependence of escape velocity

In a small enough volume the escape velocity v_e is approximately constant, but more generally v_e is radially dependent, where $v_e = v_e(r) \propto \sqrt{2\Phi(r)}$. In this work, we parametrize v_e as:

$$v_e = v_{e,0}(r/r_0)^{-\gamma/2} \quad (4)$$

where $r_0 = 8.3 \text{ kpc}$ is the solar radius, and $v_{e,0}$ is the escape speed at the position of the Sun. Our parametrization is motivated by the approximate power-law form of the gravitational potential over a small radial range, where $\Phi \propto r^{-\gamma}$. Note that this power-law dependence of the escape velocity was also used by Williams et al. (2017) over a much larger radial range.

2.3 Analytical example: spherical, power-law distribution functions

To provide some theoretical insight into the LT90 formalism, we explore the high-velocity tails in simple, power-law distribution functions. We adopt the distribution functions introduced in Evans et al. (1997), and later adopted in Deason, Belokurov & Evans (2011a). This model assumes spherical power laws for the gravitational potential ($\Phi(r) \propto r^{-\gamma}$) and tracer density profile ($\rho(r) \propto r^{-\alpha}$), and has constant velocity anisotropy ($\beta = 1 - [\langle v_\phi^2 \rangle + \langle v_\theta^2 \rangle] / 2 \langle v_r^2 \rangle$). The velocity distribution is given in terms of the binding energy ($E = \Phi(r) - 0.5v_{\text{tot}}^2$) and the total angular momentum ($L = \sqrt{L_x^2 + L_y^2 + L_z^2}$):

$$F(E, L) \propto L^{-2\beta} f(E), \quad (5)$$

where

$$f(E) = E^{\beta(\gamma-2)/\gamma + \alpha/\gamma - 1.5}. \quad (6)$$

In the top panels of Fig. 1 we show the total velocity distributions derived from these models. Here, we fix the potential with $v_{\text{esc}} = 550 \text{ km s}^{-1}$ and $\gamma = 0.3$, and vary α and β . Note, for illustration, we evaluate this model at a fixed radius, $r = r_0 = 8.3 \text{ kpc}$. In the top-left panel we fix α and vary β , and in the top-right panel we fix β and vary α . It is clear that the velocity distributions differ when we vary the tracer density profile and/or velocity anisotropy. In particular, although the models all have the same potential (and escape velocity) the forms of the high-velocity tails vary significantly.

To explore this further we fix v_{esc} and fit the slope of the high-velocity tail (k) for each model using equation (1). Here, we use a minimum velocity threshold, $v > 300 \text{ km s}^{-1}$. The bottom panels of Fig. 1 show how k varies with different values of α and β . Radially anisotropic orbits (higher β) and/or shallow tracer density profiles (lower α) lead to lower values of k . The high-velocity tails are more populated by stars on highly eccentric orbits (larger β) because these are biased towards lower energy, and hence larger speeds. This also makes sense physically, as stars on radial orbits can reach to larger distances on their orbits, and have more chance of ‘escape’. Note that the $L^{-2\beta} \propto v^{-2\beta}$ term in equation (5) leads to the low-velocity form of the velocity distribution, whereby systems with large β values also populate the low-velocity regime. The net result is a broader distribution for radially anisotropic orbits, with a strong tail to high velocities. In contrast, the distribution for tangential orbits is more strongly peaked, and does not populate the high-velocity (low energy) or low-velocity (low angular momentum) regimes. In a given gravitational potential, and at fixed β , more extended tracer populations (smaller α) are biased towards lower energies, and hence larger speeds. Thus, when α is low there are more stars that populate the high-velocity tail, and k is lower. Again, physically one can imagine that stars drawn from a shallower radial number density distribution are more likely to extend to larger distances (and hence lower energies) on their orbits.

The k values predicted by these spherical, power-law models can be compared to the predictions for a system undergoing violent relaxation. In this case, Jaffe (1987) and Tremaine (1987) show that $k = 1.5$. Indeed, LT90 and Kochanek (1996) adopt k values that bracket the violent relaxation prediction with $k \in [0.5, 2.5]$. These predictions for k were based on self-gravitating systems, rather than the tracer populations considered here. However, this historical range of k agrees with the high β , low α regime of the power-law dfs shown in Fig. 1.

Although these models are idealized, they give us an important insight into the high-velocity tails of stellar systems. In particular, we see that the power-law slope of the velocities near v_e depends on the velocity anisotropy and density profile of the tracer stars. In our own Milky Way we now have a good handle on these properties, particularly for stars close to the Sun. In the inner regions ($r < 20 \text{ kpc}$) of the halo the density profile is an approximate power law with index $\alpha \sim 2.5$ (e.g. Deason, Belokurov & Evans 2011b; Sesar, Jurić & Ivezić 2011; Faccioli et al. 2014; Pila-Díez et al. 2015). We also know that the orbits of local halo stars are highly eccentric ($\beta = 0.7$; Smith et al. 2009; Bond et al. 2010). Indeed, recent works using the latest *Gaia* data releases have shown that the stellar orbits in the inner regions of the halo are strongly radial, and the stars in these inner regions are mainly contributed by one massive dwarf progenitor (Belokurov et al. 2018; Helmi et al. 2018). Thus, importantly, the aforementioned observations can limit the range of k applicable to our own Galaxy. In the following section, we explore the relation between k and the stellar halo properties further, using the more realistic distributions present in cosmological simulations.

3 COSMOLOGICAL SIMULATIONS

3.1 Auriga simulation suite

We use the Auriga simulation suite to explore the high-velocity tails of stellar haloes. Auriga is a suite of high-resolution Milky Way-mass haloes, spanning a mass range $1 \times 10^{12} < M_{200}/M_\odot < 2 \times 10^{12}$. Here, we give a brief description of the simulations and defer the interested reader to Grand et al. (2017) for more details.

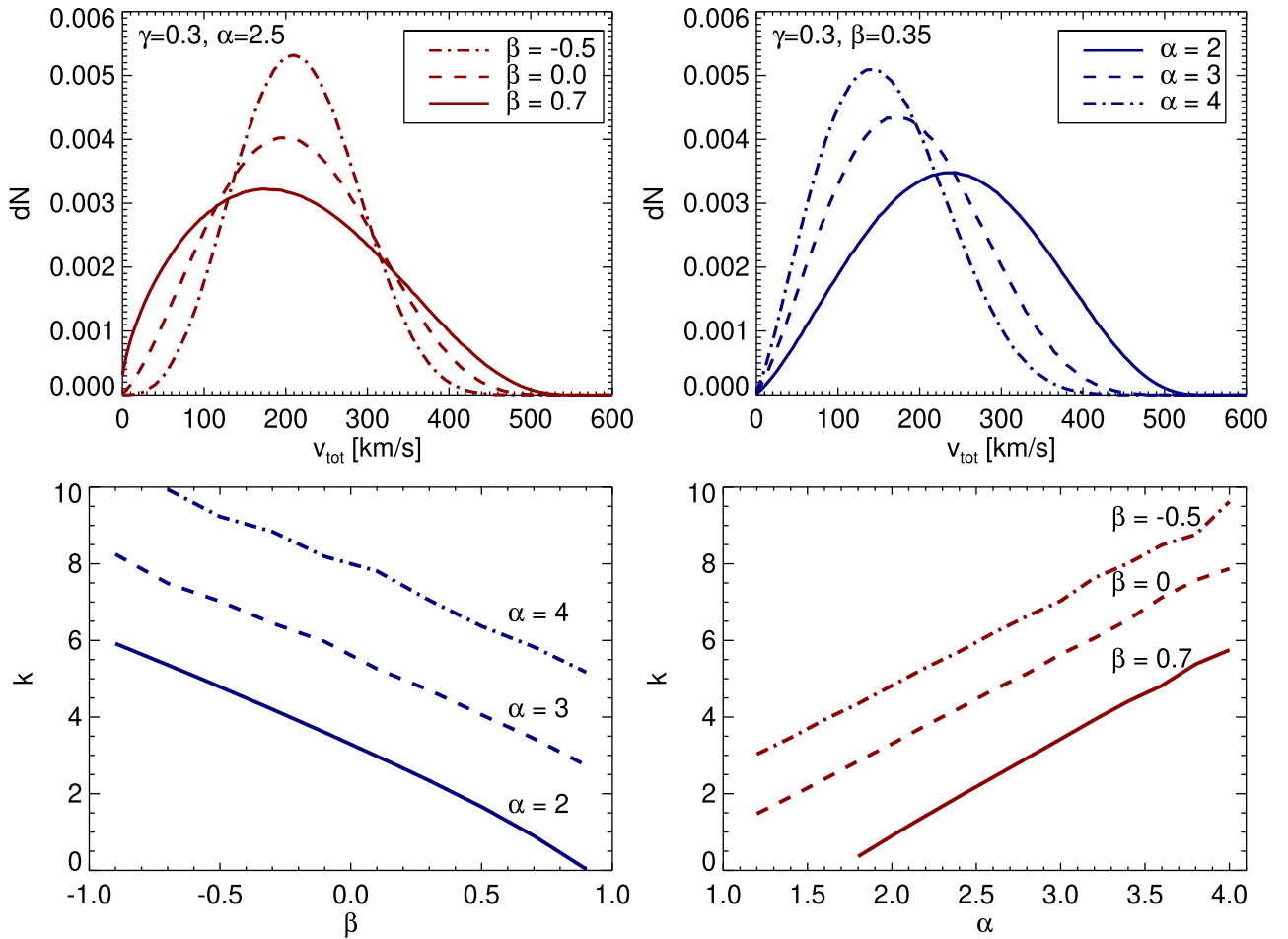


Figure 1. Velocity distribution functions (dfs) from the spherical power-law models presented in Evans, Hafner & de Zeeuw (1997). Here, the dfs are a function of tracer density slope (α), velocity anisotropy (β) and gravitational potential slope (γ) – see equations (5) and (6) in the text. We show models with a fixed potential, where $\gamma = 0.3$ and $v_{\text{esc}} = 550 \text{ km s}^{-1}$. Note that this γ is the median value we find in the Auriga simulations at $r \sim 8 \text{ kpc}$. In the top panels we show the total velocity distribution for fixed α (left) and β (right). The bottom panels show a power-law fit to the high-velocity tail (with $v_{\text{tot}} > 300 \text{ km s}^{-1}$), of the form $\propto (v_{\text{esc}} - v)^k$, for various β and α . The systems with highly radial anisotropy and/or shallower tracer density profiles have more extended velocity tails, and thus lower values of k (see text for details).

The Auriga suite comprise $N = 30$ re-simulated haloes, which were chosen from the 100^3 Mpc^3 dark matter only periodic box from the EAGLE project (Crain et al. 2015; Schaye et al. 2015). The candidate haloes were chosen to have a similar mass to the Milky Way, and be relatively isolated at $z = 0$: i.e. with no massive objects (greater than half of the parent halo’s mass) closer than 1.37 Mpc. The cosmological parameters in the simulation are consistent with the Planck Collaboration et al. (2014) data release, with parameters: $\Omega_m = 0.307$, $\Omega_b = 0.048$, $\Omega_\Lambda = 0.693$ and $H_0 = 100h \text{ km s}^{-1} \text{ Mpc}^{-1}$, where $h = 0.6777$.

A multi-mass particle ‘zoom-in’ technique (Jenkins 2013) was used to re-simulate the candidate haloes to higher resolution. The re-simulations were performed using the magneto-hydrodynamical code AREPO (Springel 2010). In this work we use the Level 4 resolution suite, where the typical mass of dark matter and baryonic particles are $3 \times 10^5 M_\odot$ and $5 \times 10^4 M_\odot$, respectively. Details regarding the subgrid galaxy formation processes are given in Grand et al. (2017): these include critical processes such as star formation, stellar evolution and supernova feedback, a photoionizing UV background, metal line cooling, and the growth of supermassive black holes. The Auriga suite has been successful in reproducing

a number of observational properties of both central discs and stellar haloes, including the rotation curves, stellar masses and star formation rates of discs (e.g. Grand et al. 2017; Marinacci et al. 2017), and the kinematics and number density profiles of stellar haloes (e.g. Deason et al. 2017; Monachesi et al. 2018). In this work we do not include Haloes 11 and 20 in our analysis, as they are both undergoing a merger at the present time.

The Milky Way analogues are defined as the central galaxies in the Auriga haloes, and the coordinate frame is based on the SUBFIND algorithm (Davis et al. 1985). In this work, we only consider ‘accreted’ star particles (cf. Fattahi et al. 2019). These stars were bound to galaxies other than the main progenitors of the Milky Way analogues at the snapshot following their formation time. Thus, these stars mainly comprise the stellar debris from destroyed satellite galaxies. We choose to only include accreted stars for two main reasons: (1) there is little compelling evidence that the Milky Way stellar halo has significant contributions from stars born ‘in-situ’ (e.g. Deason et al. 2017; Belokurov et al. 2018; Di Matteo et al. 2018; Haywood et al. 2018) and (2) the presence of in-situ halo stars in simulations is strongly dependent on the subgrid galaxy formation physics and numerical resolution (e.g. Zolotov

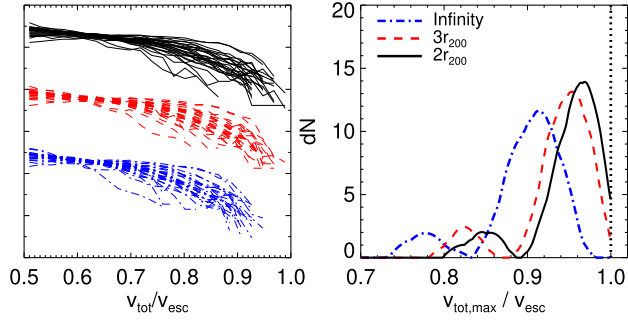


Figure 2. Left panel: The velocity distribution of the Auriga stellar haloes relative to the escape speed. Different escape velocity definitions, shown by different colours, are shifted along the y -axis for clarity. Right panel: The maximum speed reached by the stars relative to the escape velocity. Here, we only consider accreted stars in the radial range $4 < r/\text{kpc} < 12$. The escape velocity is defined as escape to infinity (dot-dashed blue line), $3r_{200}$ (dashed red line) and $2r_{200}$ (solid black line), respectively. Note the curves are smoothed by an Epanechnikov kernel.

et al. 2009; Cooper et al. 2015). Moreover, as recently found by Monachesi et al. (2018), the inclusion of in-situ stars in the Auriga galaxies suites leads to stellar haloes that are substantially more massive and metal-rich than observations.

When examining the halo star kinematics around the solar radius $r_0 = 8.3$ kpc, we rescale the phase-space distribution by the observed local circular velocity in the Milky Way, where $V_c(r_0) = 230 \text{ km s}^{-1}$ (Eilers et al. 2019). The positions and velocities are multiplied by the scaling factor, $f = 230/V_c(r_0)$, which ranges from $f \sim 0.75$ to 1.4.

3.2 The definition of ‘escape speed’

The escape speed is defined as the velocity that a star requires to escape the gravitational field of a host halo. The simulated haloes are not isolated systems, so a limiting distance needs to be defined so that stars orbiting beyond this system can escape. In principle, this limiting distance is fairly arbitrary. However, the chosen distance should not underestimate the escape speed (i.e. to prevent stars being unrealistically unbound), but also should not reach far enough to permeate into the vicinity of neighbouring haloes. In the case of the Milky Way, a sensible choice is approximately half the distance to M31 (where $D_{\text{M31}} \sim 800$ kpc). In addition, one would also like a definition of escape velocity which is plausible for stars in the solar neighbourhood. For example, if the limiting distance is too large then the maximum speeds reached by the stars will not come close to the escape velocity. This consideration is important, as an intangible definition of the limiting distance will lead to an underestimate of the escape velocity, and hence the total mass.

Piffel et al. (2014) adopt an outer boundary of $3r_{340}$, where the virial radius is defined relative to a density threshold of 340 times the critical density. This leads to distances between 430 and 530 kpc. Note the definition of the virial radius used by Piffel et al. (2014) is not commonly used, but can easily be converted to the more standard definition of 200 times the critical density (r_{200} , as used in this work): $r_{340} \approx 0.8r_{200}$, so $3r_{340} \approx 2.4r_{200}$. In comparison, Smith et al. (2007) use a slightly larger limiting distance of $3r_{200}$.

In the left-hand panel of Fig. 2 we show the total velocity distributions of the Auriga stellar haloes relative to the escape velocity. In the right-hand panel we show the distribution of maximum speeds for each halo. Here, we consider accreted stars

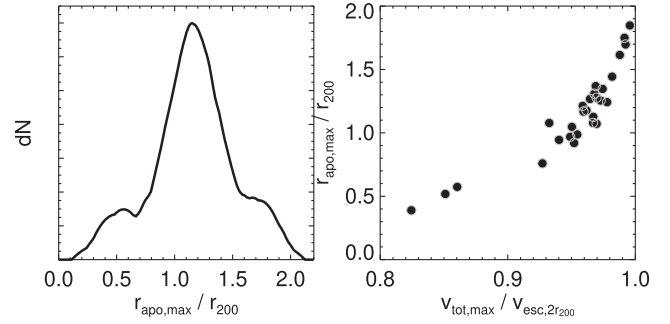


Figure 3. Left panel: The distribution of maximum apocentres for the Auriga stellar haloes (for accreted stars between 4 and 12 kpc) smoothed by an Epanechnikov kernel. The maximum radii are scaled by the virial radius, r_{200} . Right panel: The maximum apocentre as a function of maximum total velocity scaled by the escape velocity (defined as escape at $2r_{200}$). Stars approaching the escape velocity typically have apocentres out to ~ 1.5 – $2r_{200}$.

in the radial range $4 < r/\text{kpc} < 12$. We use three definitions of escape velocity: relative to $2r_{200}$, $3r_{200}$, and the more unrealistic escape to infinity. We find that a limiting radius of $2r_{200}$ leads to stellar velocities approaching the escape velocity, but not passing it. Indeed, although not shown here, we find that closer limiting definitions of r_{200} and $1.5r_{200}$ can lead to stars having velocities exceeding the escape velocity. In contrast, if we assume escape to infinity, the total velocities typically reach 90 per cent of the escape velocity. Although this may appear like a small decrement, for escape velocities of $\sim 500 \text{ km s}^{-1}$ this can lead to underestimates of $\sim 50 \text{ km s}^{-1}$. In the remainder of this work we choose $2r_{200}$ as the limiting radius in our fiducial definition of v_{esc} . This radius ranges from $2r_{200} \sim 400$ to 500 kpc in the Auriga haloes. Conveniently, this definition also approximately coincides with the halfway distance to M31.

We explore our definition of the limiting radius further by examining the apocentres of the high-velocity stars. To approximately estimate the apocentres, we calculate the energy (E_0) and total angular momentum (L_0) of stars with $v_{\text{tot}} > 300 \text{ km s}^{-1}$, and find the radii where $\Phi(r) + L_0^2/2r^2 = E_0$ (see Binney & Tremaine 1987, chapter 3). Here, we only consider stars in the radial range $4 < r/\text{kpc} < 12$ at $z = 0$. To estimate the potential of the simulated haloes, we assume spherical symmetry and consider all particles in the radial range $0 < r/\text{kpc} < 600$. For each halo, we find the maximum apocentre, which generally coincides with the more extreme v_{tot} values. In the left-hand panel of Fig. 3 we show the distribution of maximum apocentres scaled to the virial radius, r_{200} . There is a wide range of radii, but typically these lie at ~ 1 – $1.5r_{200}$. In the right-hand panel of Fig. 3 we show how these maximum apocentres relate to the maximum velocities. Typically, stars with velocities approaching the escape speed have apocentres of ~ 1.5 – $2r_{200}$. Thus, this exercise shows that our choice of $2r_{200}$ as an outer boundary is also appropriate based on the orbits of the high-velocity stars.

Figs 2 and 3 show that there is a great deal of variation between the Auriga haloes. Indeed, some stellar velocity distributions reach right up to the escape velocity, whilst others are truncated well below it. This is related to the varying forms of the high-velocity tails, which, as we showed in the previous section, are dependent on the properties of the halo stars, such as their velocity anisotropy and radial density profile. Indeed, a significant advantage of using the Auriga suite is that the number of haloes ($N = 28$ used in this work) is sufficient to probe a wide range of assembly histories (cf. Smith

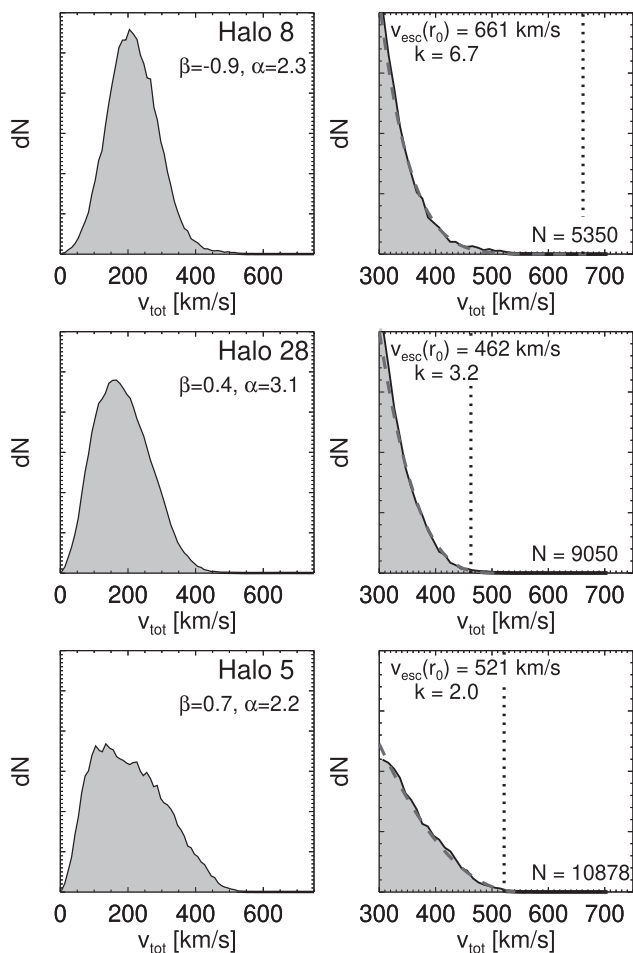


Figure 4. Total velocity distributions for three example haloes in the Auriga simulation suite. The left panels show the full distribution, and the right panels focus on the high-velocity tail (with $v_{\text{tot}} > 300 \text{ km s}^{-1}$). The red dashed lines show a power-law fit to the high-velocity tail, and the dotted line indicates the escape velocity. Note that we only consider accreted halo stars in the radial range $4 < r/\text{kpc} < 12$. The numbers in the bottom right corner indicate the number of star particles with $v_{\text{tot}} > 300 \text{ km s}^{-1}$.

et al. 2007 and Piffl et al. 2014 who used four and eight haloes in their analyses, respectively). This is particularly important if the Milky Way’s accretion history is atypical. However, before proceeding we caution that although the Auriga suite has significantly more high-resolution Milky Way-like haloes than previous simulations, this does not guarantee that the assembly histories of the simulated haloes are sufficiently close to that of the Milky Way. Indeed, our findings are, like others, limited by the variety of assembly histories present in Auriga. Nonetheless, we believe that the range of accretion histories of the Auriga haloes presents a fair sampling of the halo-to-halo scatter at this mass range, and, at present, is the best equipped simulation suite for this work.

3.3 High-velocity tails in Auriga

In this section, we explore the high-velocity tails of the accreted stellar haloes in the Auriga simulations. Throughout, we consider stars in the radial range $4 < r/\text{kpc} < 12$, which brackets the solar radius of the Milky Way. In Fig. 4 we show three example velocity distributions. The high-velocity tails are highlighted in the right-hand panels, and the red-dashed line shows a fit of the form

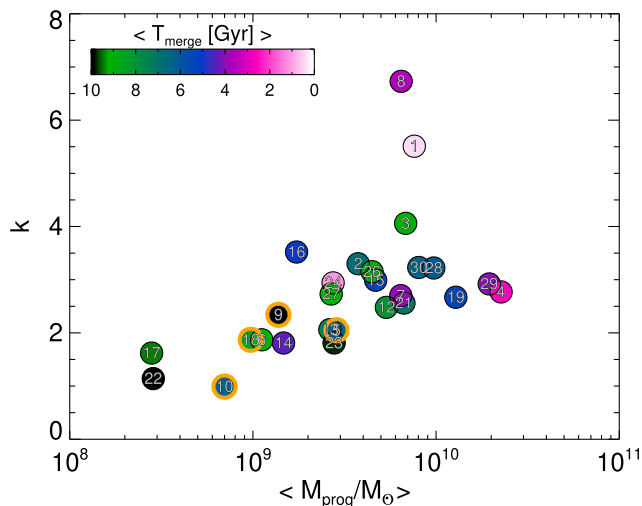


Figure 5. The power-law slope of the high-velocity tail of accreted halo stars against the most massive progenitor contributing to the velocity distribution. Here, we consider stars in the radial range $4 < r/\text{kpc} < 12$. The points are coloured according to the merger time of the dwarf galaxy, and the halo ID number is indicated in grey. Note that the haloes with prominent ‘sausage’ components (highlighted in orange – see Fattahi et al. 2019, fig. 3) have low k values.

equation (1) to stars with $v_{\text{tot}} > 300 \text{ km s}^{-1}$. Here, we have fixed the escape velocity – defined with a limiting radius of $2r_{200}$ – and allowed k to be a free parameter. Note that the escape velocity varies as a function of radius, so each star at a given radius has a slightly different escape velocity. In Fig. 4 we indicate the best-fitting k value, and the escape velocity at $r = r_0 = 8.3 \text{ kpc}$. These examples bracket cases with steep velocity tails (e.g. Halo 8, $k = 6.7$) and shallow velocity tails (e.g. Halo 5, $k = 2.0$).

In Fig. 5 we show the derived k values for each Auriga halo as a function of the median dwarf progenitor mass of the accreted stars in the radial range $4 < r/\text{kpc} < 12$. Note that, in most cases, there are one or two progenitors that contribute the majority of halo stars (see e.g. Fattahi et al. 2019). The circle points are coloured according to the median lookback time that the stars became bound to the Milky Way’s main progenitor (rather than the dwarf progenitor). This figure shows that recent, massive accretion events lead to larger k values than earlier, less massive events. We also indicate, with the orange circles, the four haloes with very prominent ‘sausage’ components – i.e. with highly anisotropic velocity distributions – found by Fattahi et al. (2019). These have low values of k , with $k \lesssim 2.5$ (see below). Fig. 5 shows that the variation of k depends on the assembly history of the haloes. Thus, as alluded to in the previous section, our knowledge of the formation of the inner Milky Way stellar halo provides a key constraint on k . Recent results from *Gaia* suggest that the inner halo was built from the disruption of an SMC or LMC mass ($M_{\text{star}} \sim 10^9 M_{\odot}$) dwarf galaxy at early times ($T \sim 8\text{--}10 \text{ Gyr}$) (e.g. Belokurov et al. 2018; Helmi et al. 2018), and thus, based on Fig. 5, low values of $k < 2.5$ are preferred.

We can explore in more detail how k depends on the stellar halo properties by analysing the phase-space distribution of the stars. In Fig. 6 we show how k depends on the velocity anisotropy (β , left panel) and the power-law slope of the stellar halo density (α , right panel). Note that both of these quantities (β and α) are measured within the radial range $4 < r/\text{kpc} < 12$. As we found in the idealized power-law distribution function models (see Section 2.3), higher β and/or lower α values lead to lower values of k . The dashed black

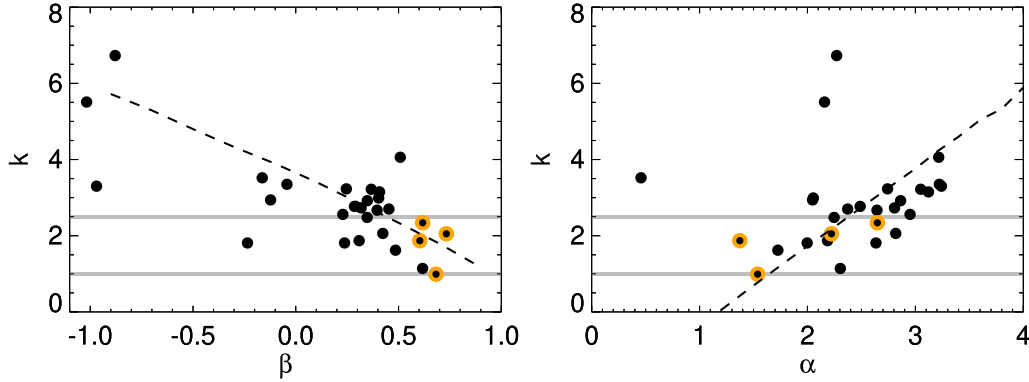


Figure 6. The power-law slope of the high-velocity tail in the Auriga haloes as a function of velocity anisotropy (β , left panels) and stellar halo density slope (α , right panels). The most prominent ‘sausage’ haloes in the Auriga suite are highlighted in orange. Note all parameters are calculated within the radial range $4 < r/\text{kpc} < 12$. The black dashed lines indicate the relation between k and β (α) predicted by the power-law dfs. Here, we have fixed α (β) and γ to the median values of the simulated haloes. As predicted by the analytical dfs, the tails of the velocity distributions are shallower when the velocity anisotropy is strongly radial and/or the stellar halo density is relatively shallow. The thick grey lines indicate the range of k appropriate for stellar haloes with strongly radial velocity anisotropy.

lines indicate the predicted relations from the analytical dfs, where γ and α or β are fixed to the median values of the simulated haloes ($\gamma = 0.3$, $\alpha = 2.5$, $\beta = 0.35$). Remarkably, these predictions agree well with the simulations!

The four haloes with prominent ‘sausage’ components are again highlighted in orange. We also indicate with the thick grey lines the range of $k \in [1.0, 2.5]$ appropriate for stellar haloes with strongly radial velocity anisotropy. Figs 5 and 6 illustrate that, although there is a relatively wide range of k values in the simulations ($1 \lesssim k \lesssim 7$), the form of the high-velocity tail is correlated with the stellar halo properties. Thus, rather than bracket the range predicted by the simulations, which covers a wide range of assembly histories, we can provide a more stringent constraint on k from our observational data. Thus, in the following section, when we measure the local Galactic escape speed, we impose $1.0 < k < 2.5$. This range of k encompasses the values we found in the Auriga simulations when $\beta \sim 0.7$, and also brackets the predicted k value from the analytical power-law dfs when $\beta = 0.7$, $\alpha = 2.5$.

3.3.1 Constraining the local escape velocity

We end this section by illustrating the importance of k in determining an accurate Galactic escape speed. Here, we perform the maximum likelihood analysis described in Section 2.1 to the simulation data. Here, k , γ and $v_{\text{esc}}(r_0)$ are free parameters. To mimic the approximate status of the observational data, we randomly choose $N = 240$ star particles in the radial range $4 < r/\text{kpc} < 12$ with $v_{\text{tot}} > 300 \text{ km s}^{-1}$, and include a Gaussian error on the total velocities with $\sigma = 30 \text{ km s}^{-1}$. Note this exercise is for illustration rather than quantification of the observational results (see Section 4). In Fig. 7 we show the 2D confidence contours in the k and $v_{\text{esc}}(r_0)$ space for the three example Auriga haloes shown in Fig. 4. Here, we have marginalized over the power-law slope of the potential (γ), but note that this parameter is generally poorly constrained when there is a limited radial range and small number of tracers (see Fig. 9). Fig. 7 shows that, although the true k and $v_{\text{esc}}(r_0)$ values are contained within the $1 - \sigma$ confidence regions (plus symbols), there is a strong degeneracy between k and $v_{\text{esc}}(r_0)$, such that the escape velocity varies by hundreds of km s^{-1} when k is unknown. The dotted lines indicate the approximate range of k predicted based on the velocity anisotropy of the halo stars (see Fig. 6) – this prior

knowledge can substantially narrow down the allowed range of $v_{\text{esc}}(r_0)$ values. Note that we impose a range of k , rather than a fixed value, to account for the scatter in k at fixed β .

For several reasons, the case of our own Milky Way appears rather fortuitous! First, the currently accepted origin of the inner stellar halo – namely from the debris of one massive dwarf, accreted several Gyr ago – suggests that the majority of the stellar halo material, at least near the solar vicinity, is well phase-mixed. Secondly, as mentioned previously, our knowledge of the halo stars’ orbits in the solar vicinity places a constraint on k , with $1.0 < k < 2.5$. Thirdly, the fact that the Milky Way likely has a low k value means that the high-velocity stars can more strongly constrain the escape velocity. For example, if $k = 1$, the high-velocity tail linearly declines to a truncation at v_{esc} . Thus, in this case, the fastest star in the sample is likely very close to the escape velocity. In contrast, if k is high, a long, poorly populated tail extends to the escape velocity, and thus the escape velocity is more difficult to constrain.

On that optimistic note, we end this section exploring the Auriga simulations, and proceed to constrain the local Galactic escape speed using *Gaia* data.

4 THE GALACTIC ESCAPE SPEED FROM GAIA DR2

In this section, we apply the LT90 formalism described in Section 2.1 to *Gaia* DR2 (Gaia Collaboration et al. 2018). We use the information gleaned from the simulations to help constrain the escape velocity by applying a prior on the k value, which is tailored for our own Milky Way galaxy.

4.1 Gaia DR2 data

We select stars from *Gaia* DR2 with parallax, proper motion and radial velocity information. We apply the same quality flags as Marchetti et al. (2018) and Monari et al. (2018) to make sure our sample is free from spurious objects. In addition, we only include stars with re-normalized unit weight error, RUWE < 1.4 (Lindgren 2018), which ensures stars with unreliable astrometry are excluded. Our estimate of $v_{\text{esc}}(r_0)$ is sensitive to the fastest moving stars, hence we restrict our analysis to stars with accurate parallax measurements, with $0 < \sigma(\varpi)/\varpi < 0.1$. To estimate

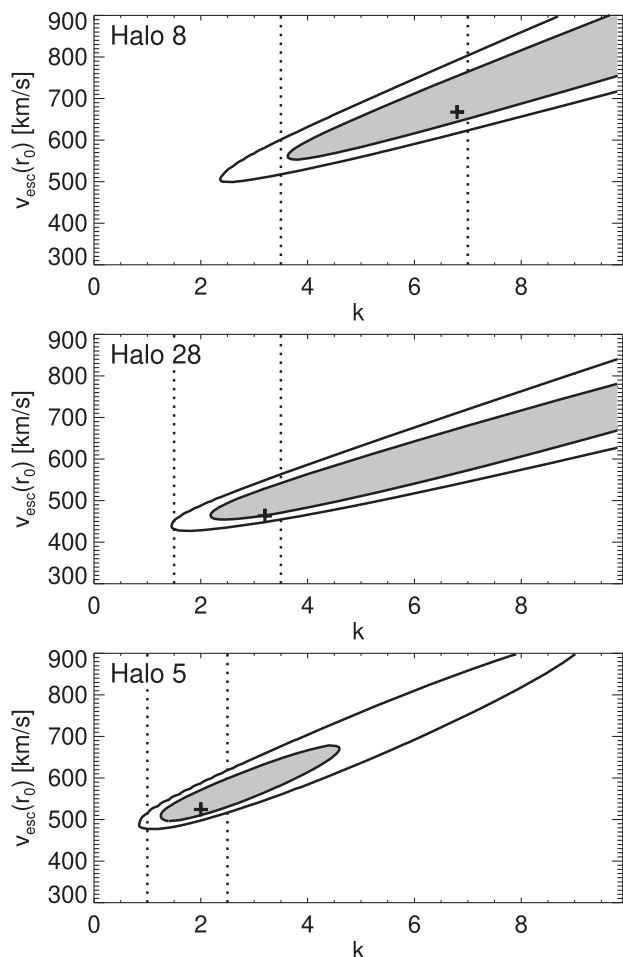


Figure 7. The 2D confidence contours in the k and $v_{\text{esc}}(r_0)$ space for three example Auriga haloes (see also Fig. 4). We have marginalized over the radial power-law slope of the escape velocity (γ), and the contours show the 1 – (grey filled) and 2 – σ (solid line) confidence regions. Here, we have randomly chosen $N = 240$ star particles in the radial range $4 < r/\text{kpc} < 12$ with $v_{\text{tot}} > 300 \text{ km s}^{-1}$, and include a random error on the total velocities of 30 km s^{-1} . This approximately mimics the sample size and uncertainties in the *Gaia* data (see Section 4). The degeneracy between k and $v_{\text{esc}}(r_0)$ is clear. Moreover, with smaller sample sizes and/or relatively large velocity errors, the degeneracy becomes even more pronounced. The dotted lines indicate the approximate range of k predicted based on the velocity anisotropy of the halo stars – the addition of this constraint can narrow down the allowed region of $v_{\text{esc}}(r_0)$ substantially.

distances, we use the procedure outlined in McMillan (2018), which uses a prior designed to apply to the *Gaia* data with radial velocities. We adapt the method¹ to only include a prior relevant for a halo population. In practice, this means only considering a halo density component (rather than multiple Galactic components), and assuming a flat age and metallicity prior. We assume a power-law slope with index -2.5 for the halo stars, in agreement with the most recent constraints for the density profile of the inner halo (e.g. Faccioli et al. 2014; Pila-Díez et al. 2015). In our analysis, we only include stars in the immediate solar vicinity with $D < 3 \text{ kpc}$: this cut ensures our distances are dominated by the parallax information rather than the prior. Finally, to avoid any contamination from disc

¹The code from McMillan (2018) is available here: <https://github.com/PauIMcMillan-Astro/GaiaRVStarDistances>

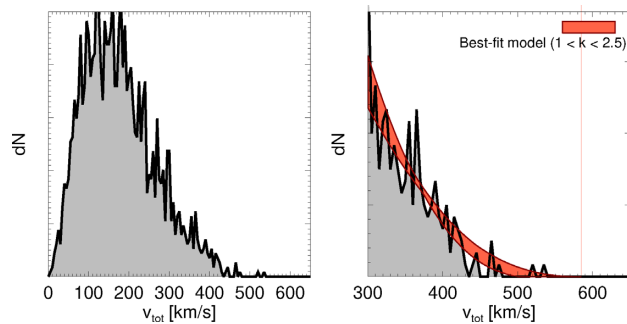


Figure 8. The velocity distribution of $N \sim 2300$ counter-rotating stars in the *Gaia* DR2 catalogue. These stars have measured proper motions, radial velocities and parallaxes. We select stars within 3 kpc of the solar neighbourhood, with less than 10 per cent parallax errors. In the right-hand panel, the red line-filled polygon shows the best-fitting model to the high-velocity tail.

stars, we only consider counter-rotating stars (cf. Monari et al. 2018). Our final sample of stars is $N \sim 2300$, of which $N \sim 240$ have $v_{\text{tot}} > 300 \text{ km s}^{-1}$. With future *Gaia* data releases we can be less restrictive, and explore a wider range of distances. Here, we focus on a local sample in order to robustly determine $v_{\text{esc}}(r_0)$.

The distances, proper motions and radial velocities are converted to Galactocentric coordinates, assuming a circular velocity of $v_c(r_0) = 230 \text{ km s}^{-1}$ (Eilers et al. 2019) at the position of the Sun ($r_0 = 8.3 \text{ kpc}$), and a peculiar solar motion of $(U_\odot, V_\odot, W_\odot) = (11.1, 12.24, 7.25) \text{ km s}^{-1}$ (Schönrich, Binney & Dehnen 2010). If the adopted circular velocity is lower or higher by 10 km s^{-1} then our derived total velocities are only mildly affected, and our measured escape velocity is not significantly changed. We propagate errors in our analysis using a Monte Carlo technique. Samples are generated $N = 1000$ times with proper motions, distances and radial velocities drawn from their respective error distributions. The data are resampled with replacement (cf. Smith et al. 2007), and in each iteration we only consider stars with $v_{\text{tot}} > 300 \text{ km s}^{-1}$, $v_\phi < 0 \text{ km s}^{-1}$ and $D < 3 \text{ kpc}$. We employ a brute force grid-based method to estimate the likelihood values, with uniform grids in the range $k \in [0, 10]$, $v_{\text{esc}}(r_0) \in [400, 900]$ and $\gamma \in [0, 1]$.

4.2 Results

The total velocity distribution of the *Gaia* data is shown in Fig. 8, where stars with $v_{\text{tot}} > 300 \text{ km s}^{-1}$ are shown in the right-hand panel. When we adopt a flat prior of $1 < k < 2.5$, which is appropriate for the highly eccentric orbits in the solar vicinity, the best-fitting model is indicated by the red band. The width of the band indicates the 90 per cent confidence region.

The confidence regions for k , $v_{\text{esc}}(r_0)$ and γ are shown in Fig. 9. The filled grey region and solid black line show the 1 – and 2 – σ confidence intervals, respectively. Here, we have assumed flat priors for k and γ and employed a Jeffrey’s prior for $v_{\text{esc}}(r_0)$. We show the posterior distributions for each parameter in the inset panels. The degeneracy between k and $v_{\text{esc}}(r_0)$ is clear, as seen in the previous section (and earlier work by Smith et al. 2007; Piffl et al. 2014). The red and blue lines illustrate the effect of a prior on k . Specifically, the dashed red line applies our new prior – based on the orbits in the solar neighbourhood, and calibrated on the Auriga simulations – of $1 < k < 2.5$. For comparison, we also show the prior adopted by Piffl et al. (2014) and Monari et al. (2018), which is also based on cosmological simulations: $2.3 <$

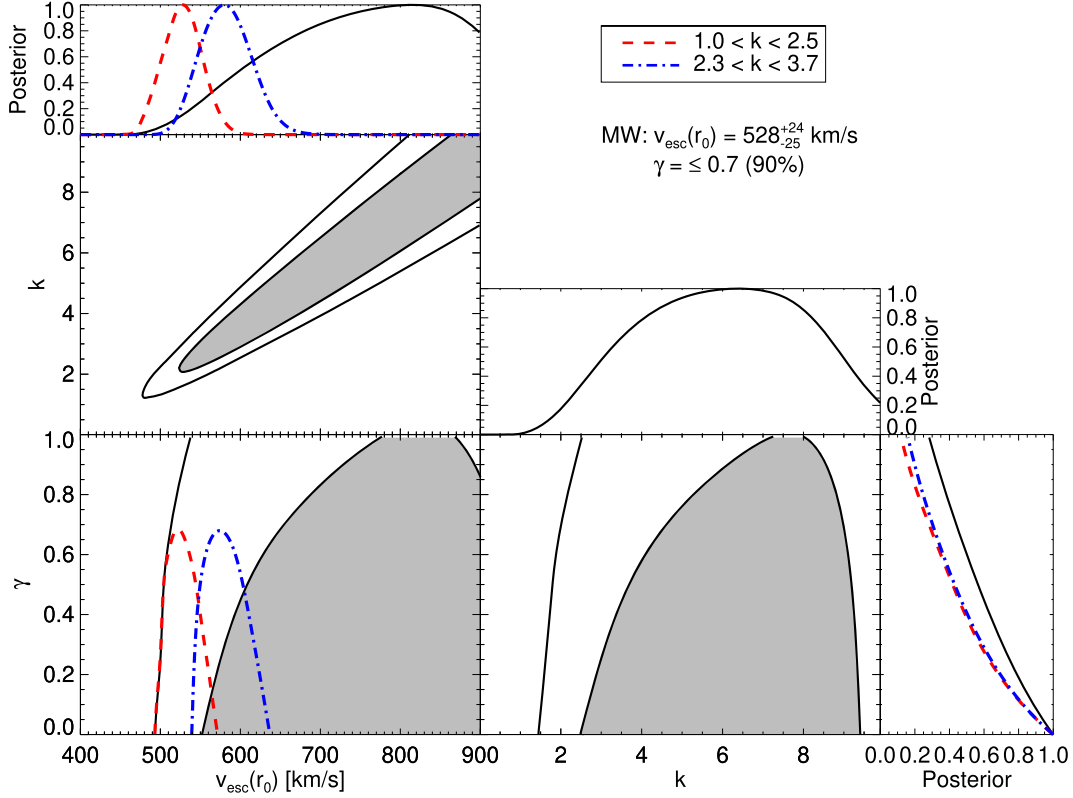


Figure 9. The results of applying our likelihood analysis to the *Gaia* data with $v_{\text{tot}} > 300 \text{ km s}^{-1}$. Here, the degeneracy between v_{esc} and k is clear. When we adopt a prior of $1 < k < 2.5$ (red dashed line), appropriate for the strongly radial orbits observed in the solar neighbourhood, we find $v_{\text{esc}}(r_0) = 528^{+24}_{-25} \text{ km s}^{-1}$. Note that adopting the same prior as Monari et al. (2018) and Piffl et al. (2014), $2.3 < k < 3.7$ (blue dot-dashed line) results in a larger escape velocity: $v_{\text{esc}}(r_0) = 580^{+32}_{-32}$. We find little evidence for strong radial variation in v_{esc} over the range we are probing (i.e. $\gamma \sim 0$), with $\gamma \leq 0.7$ with 90 per cent confidence.

$k < 3.7$. In these works, the prior spans the range of k values found in simulations. However, our adopted prior is tailored towards the highly eccentric stars in the Milky Way, which leads to lower k values.

Assuming $1 < k < 2.5$ we find $v_{\text{esc}}(r_0) = 528^{+24}_{-25} \text{ km s}^{-1}$. This value is lower than the recent determination by Monari et al. (2018) using *Gaia* DR2 data. However, the reason for this difference is owing to the prior information on k . If we adopt the Piffl et al. (2014) prior, we find $v_{\text{esc}} = 580^{+31}_{-31} \text{ km s}^{-1}$, which is in excellent agreement with Monari et al. (2018). Note that our error bars are smaller than Monari et al. (2018) because we do not use narrow distance bins, but rather use all the data and allow for a radially varying escape velocity. Our estimate of the local escape velocity is in good agreement with the values found by Smith et al. (2007), Piffl et al. (2014) and Williams et al. (2017), who used line-of-sight velocity data from RAVE and SDSS to derive v_{esc} . However, it is curious that these works find a similar escape velocity, as in all cases larger values of k were adopted – which should, presumably, bias towards larger v_{esc} values. These works used samples of high latitude stars with line-of-sight velocity measurements only, and thus if there was any flattening in the stellar halo distribution in the z direction, the total speed estimates based on the line-of-sight velocities could be biased low. In particular, we now know that the inner stellar halo is significantly flattened (e.g. Iorio et al. 2018), and the highly eccentric orbits that dominate the high-velocity tail are generally confined close to the Galactic plane (e.g. Myeong et al. 2018). Thus, we suggest that the line-of-sight analysis performed by Smith et al. (2007), Piffl et al. (2014) and Williams et al. (2017) would underestimate v_{esc} if they used the correct k prior. Instead, we

postulate that the underestimate due to the flattened halo combined with a bias towards larger k values has conspired to give an answer consistent with our results!

Finally, we remark that our constraint on γ is weak, with $\gamma = 0$ consistent with the data. This is unsurprising given that we do not explore an extensive distance range. However, when we can probe to larger distances with future *Gaia* data releases, our methodology can be used to also constrain γ , and hence the slope of the potential.

4.2.1 Bound or unbound?

The local escape velocity has often been used to ascertain whether or not stars with extreme velocities are bound to the Milky Way. Indeed, there exists a population of stars with velocities exceeding the escape velocity, which are often labelled as ‘hyper-velocity stars’ or ‘hyper-runaway’ stars (see e.g. Brown 2015). There are several plausible mechanisms that may have formed these fast moving stars, including interactions with the central supermassive black hole (e.g. Hills 1988), ejection from the Large Magellanic Cloud (e.g. Boubert & Evans 2016), dynamical encounters between star clusters (e.g. Leonard & Duncan 1990), and supernova explosions in stellar binary systems (e.g. Portegies Zwart 2000). However, while there exist a small number of extreme cases, the origin of many stars with high velocities is uncertain, as their velocities straddle the boundary of the Galactic escape velocity. Thus, an accurate measure of the escape velocity is vital in order to determine the origin of the fastest moving stars.

Recently, several works have used *Gaia* DR2 data to compile samples of candidate stars with extreme velocities (e.g. Bromley

et al. 2018; Hattori et al. 2018; Marchetti et al. 2018). However, based on both orbital and chemical arguments, Boubert et al. (2018) and Hawkins & Wyse (2018) argue that the vast majority of these candidates are likely bound to the Milky Way, and comprise the high-velocity tail of the stellar halo. Our constraint on the local escape velocity, coupled with the observational errors, agrees with this hypothesis. More accurate constraints on the escape velocity, and hence the Galactic potential, will allow a more stringent classification of the origin of the apparently extreme stars. Moreover, while *Gaia* DR2 is a giant leap forward in Galactic astronomy, future data releases will limit the number of statistical outliers, which are inevitable with these early *Gaia* data releases.

The evidence that several of the fastest moving stars occupy the high-velocity tail of the stellar halo reinforces the finding of this work. Namely, that the high-velocity tail of the local stellar halo is well populated owing to the significant radial velocity anisotropy of the halo stars. Indeed, if the velocity distribution was more sharply truncated, as we saw in some of the Auriga haloes, then we would see a less significant population of (bound) high-velocity stars.

5 TOTAL MILKY WAY MASS

The local escape velocity is a direct measure of the gravitational potential. Historically v_{esc} has been regarded as the velocity required to escape to infinity, so $v_{\text{esc}}(r) = \sqrt{2\Phi(r)}$; however, in practice, this definition is unrealistic. Instead, one needs to define a limiting radius beyond which a star is considered unbound (or cannot fall back on to the galaxy). In Section 3, we found that the appropriate limiting radius in the Auriga haloes is $\sim 2r_{200}$, thus when we convert our estimated escape velocity to a total mass estimate we need to consider $v_{\text{esc}}(r_0) = \sqrt{2(\Phi(r_0) - \Phi(2r_{200}))}$.

From this definition, we can constrain the dark matter halo parameters from our estimated escape velocity. We assume an NFW (Navarro, Frenk & White 1996, 1997) profile and let M_{200} and c_{200} be free parameters. We fix the baryonic components of the Galactic potential, adopting Miyamoto–Nagai profiles (Miyamoto & Nagai 1975) for the thin and thick discs, and a spherical Plummer potential (Plummer 1911) for the bulge. We use the parameters of the enclosed mass, scale-lengths and scale-heights from Model I in Pouliaxis et al. (2017). We vary M_{200} and c_{200} uniformly in the ranges $\log(M_{200}) \in [11.5, 12.5]$ and $c_{200} \in [1, 30]$, respectively. To derive the NFW parameters, we use the posterior values for $v_{\text{esc}}(r_0)$ derived in the previous section, after marginalizing over γ and k , and assuming $1 < k < 2.5$.

The grey contours in Fig. 10 show the confidence intervals for the NFW parameters (grey filled is $1 - \sigma$, grey line is $2 - \sigma$). We also show with the blue lines (thicker line is $1 - \sigma$, thinner line is $2 - \sigma$) the constraints on M_{200} and c_{200} assuming the circular velocity at the position of the Sun is $v_c(R_0) = 230 \pm 10 \text{ km s}^{-1}$ (Eilers et al. 2019). The combined constraint from v_{esc} and v_c is shown with the red contours. Interestingly, the v_{esc} and v_c constraints are perpendicular to each other in the M_{200}, c_{200} plane: this is because the escape velocity contains information about the potential exterior to the solar radius, whereas the circular velocity mainly depends on the mass interior. This results in a stronger constraint on M_{200} and c_{200} when the v_{esc} and v_c measurements are combined, and we find $M_{200} = 0.91_{-0.24}^{+0.31} \times 10^{12} M_{\odot}$ and $c_{200} = 10.9_{-3.3}^{+4.4}$. Note this relates to a *total* mass measurement, including the baryonic mass, of $M_{200,\text{tot}} = 1.00_{-0.24}^{+0.31} \times 10^{12} M_{\odot}$.

The black dashed line in Fig. 10 shows the mass–concentration relation derived by Dutton & Macciò (2014) for dark matter only simulations. For our estimated dark matter mass, $M_{200} =$

$0.9 \times 10^{12} M_{\odot}$, the Dutton & Macciò (2014) relation predicts a concentration of $c_{200} = 8.4$. Our derived value of $c_{200} = 10.9_{-3.3}^{+4.4}$ is higher than the theoretical prediction, but agrees within the 1σ errors. Moreover, our derived concentration is in good agreement with recent constraints in the literature (e.g. Callingham et al. 2019). If, however, we fix the concentration in our analysis to the Dutton & Macciò (2014) prediction we find a total mass measurement of $M_{200,\text{tot}} = 1.29_{-0.22}^{+0.22} \times 10^{12} M_{\odot}$. Note that we get very similar results if we adopt the mass–concentration relations derived by Schaller et al. (2015) and Ludlow et al. (2016).

Our prior on k prior strongly influences the derived local escape velocity, and thus also the estimated halo mass. For example, if we adopt the same prior on k as Monari et al. (2018) then our dark halo mass estimate is $M_{200} = 1.5 \times 10^{12} M_{\odot}$ (or $M_{200} = 1.7 \times 10^{12}$ if the Dutton & Macciò 2014 mass–concentration relation is assumed). These values are in good agreement with Monari et al. (2018), which is reassuring as they also use *Gaia* DR2 in their analysis. Interestingly, although our derived escape velocity is similar to Piffil et al. (2014), they find a more massive Milky Way halo, with $M_{200,\text{tot}} \sim 1.6 \times 10^{12} M_{\odot}$. However, we find that the main cause of this discrepancy is the mass–concentration relation assumed by Piffil et al. (2014). They use the Macciò, Dutton & van den Bosch (2008) mass–concentration as a prior, which is based on the *WMAP5* cosmology. However, in the Planck cosmology (as used by Dutton & Macciò 2014) the concentrations are 20 per cent higher. Thus, by adopting the Dutton & Macciò (2014) mass–concentration relation based on *Planck*, our mass estimates are ~ 20 per cent lower. In addition to the different mass–concentration relation, Piffil et al. (2014) also adopt a lower circular velocity, $v_c = 220 \text{ km s}^{-1}$. This also leads to a slightly higher mass estimate (see fig. 13 in Piffil et al. 2014), but, as we assume a 10 km s^{-1} error in the local circular velocity, this difference is subsumed into the mass uncertainty.

Finally, we also comment on the limiting radius that defines the escape velocity. In this work, we find that $2r_{200}$ is the most appropriate choice (see Section 3.2). However, if we adopted larger radii (i.e. $\sim 2.4\text{--}3r_{200}$, cf. Smith et al. 2007; Piffil et al. 2014) our mass estimates would be slightly lower. For example, a limiting radius of $3r_{200}$ reduces our total mass estimate by ~ 8 per cent. This lower mass is due to the limiting radius being overestimated, and hence the estimated escape velocity is lower than the true velocity needed to escape. Thus, the choice of limiting radius is an important consideration when relating local escape velocity measurements to constraints on the total mass.

Since the first astrometric *Gaia* DR2, several works have provided updated estimates of the total Milky Way mass (e.g. Eadie & Jurić 2018; Malhan & Ibata 2018; Watkins et al. 2018; Callingham et al. 2019; Posti & Helmi 2019; Vasiliev 2019). The majority of these use globular clusters or stellar streams confined within $\sim 50 \text{ kpc}$, so a total mass estimate out to the virial radius requires an extrapolation. Watkins et al. (2018), Posti & Helmi (2019) and Vasiliev (2019) find $M_{\text{vir,tot}} = 1.2\text{--}1.5 \times 10^{12} M_{\odot}$ using the dynamics of globular clusters in the inner halo, and extrapolate to the virial radius using mass–concentration relations. Here, these authors have used the definition of virial radius adopted by Bryan & Norman (1998) and Klypin, Zhao & Somerville (2002); the mass is defined within $340\Omega_M$ (≈ 100) times the critical density. However, when these masses are scaled to M_{200} (approximately 16 per cent lower than $M_{\text{vir,tot}}$), these total mass estimates are in excellent agreement with our results, where $M_{200,\text{tot}} = 1.0\text{--}1.3 \times 10^{12} M_{\odot}$.

Callingham et al. (2019) use satellite kinematics to measure the Milky Way mass, thus, as the satellites extend out to the virial radius,

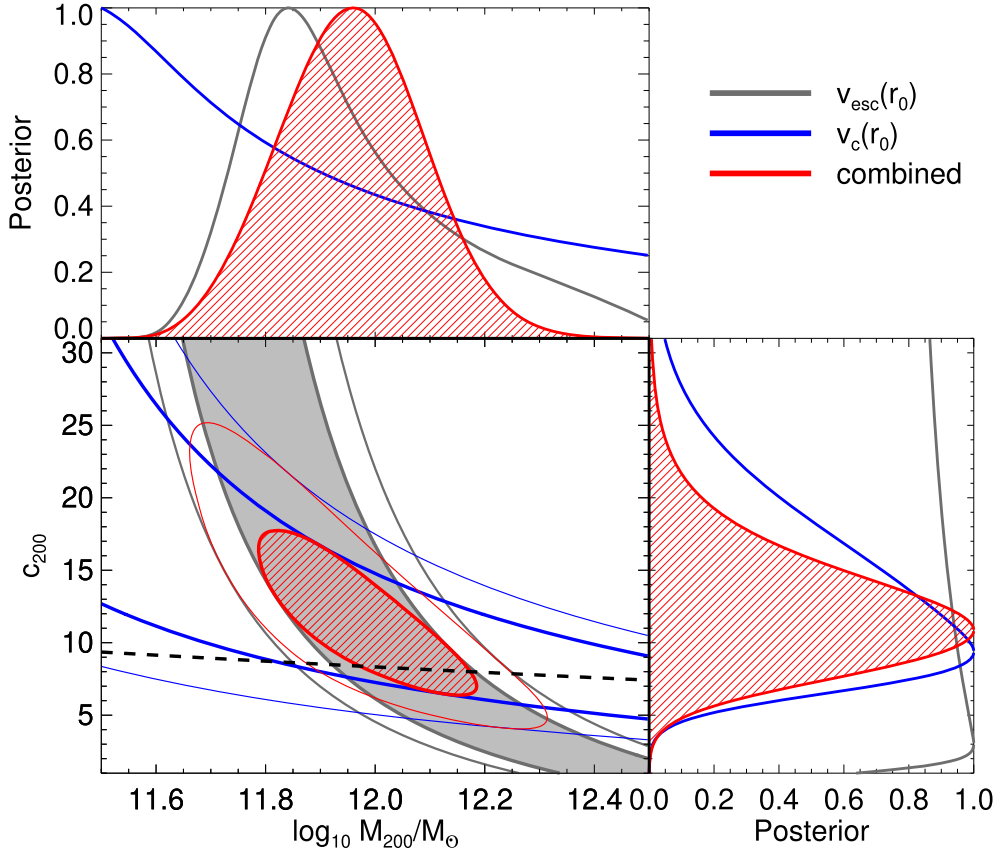


Figure 10. The derived NFW halo parameters from our escape velocity measurement. Here, we assume a bulge and two-component disc potential as given in Pouliaias, Di Matteo & Haywood (2017) (also used in Eilers et al. 2019). The grey filled contour shows the 68 per cent confidence, and the solid grey line shows the 95 per cent confidence region. The blue contours use constraints on the local circular velocity: $v_c(r_\odot) = 230 \pm 10 \text{ km s}^{-1}$. The red contours indicate the combined constraint. The black dashed line indicates the mass–concentration relation from Dutton & Macciò (2014). In the top panel and right-hand panel we show the 1D posterior distributions for M_{200} and c_{200} , respectively. Our derived dark halo mass is: $M_{200} = 0.79^{+0.45}_{-0.17} \times 10^{12} M_\odot$ (escape velocity only), $M_{200} = 0.91^{+0.31}_{-0.24} \times 10^{12} M_\odot$ (escape velocity and circular velocity).

their measure is a direct measure of the total mass. Their derived total mass and dark halo concentration, $M_{200,\text{tot}} = 1.17^{+0.21}_{-0.15}$, $c_{200} = 10.9^{+2.6}_{-2.0}$, are in good agreement with our results. This agreement is particularly pleasing as the authors quote one of the most precise and accurate total mass measurement to date, and use a completely different analysis technique (and dynamical tracers) to derive the mass.

These results imply that we are generally converging to a total Milky Way mass of $M_{200,\text{tot}} \sim 1 \times 10^{12} M_\odot$. This mass, which is on the low end of the wide spectrum of advocated masses, effectively bails the Milky Way out from the ‘too big to fail’ problem. Purcell & Zentner (2012) and Wang et al. (2012) showed that the number of massive satellites predicted around $\sim 10^{12} M_\odot$ haloes is in good agreement with the Milky Way dwarf population. In contrast, many more massive subhaloes are predicted to reside in more massive host haloes, which led to the original conundrum posed by Boylan-Kolchin, Bullock & Kaplinghat (2012). Our total Milky Way mass also has implications for the identity of the dark matter (e.g. Kennedy et al. 2014; Lovell et al. 2014), the influence of reionization on the dwarf satellite population (Bose, Deason & Frenk 2018), and the uniqueness of some of the satellite dwarf galaxies (e.g. the Magellanic clouds and Leo I, Boylan-Kolchin et al. 2013; Cautun et al. 2014). Indeed, the wide-range of Milky Way mass estimates quoted in the literature has allowed this parameter to frustrate our investigations into apparent small-scale problems with

the Λ CDM model; now in the era of *Gaia* we can hope to remove, or at least narrow down, this important degree of freedom in future analyses.

6 CONCLUSIONS

In this work, we have investigated the high-velocity tail of local Galactic halo stars using a combination of analytical models, cosmological simulations and six-dimensional *Gaia* data. We make use of recent constraints on the origin of the inner stellar halo, which affects the velocity distribution of the halo stars, to construct a prior on the shape of the high-velocity tail. We use this insight to estimate the local Galactic escape speed, and relate this measurement to the total Milky Way mass. Our main conclusions are summarized as follows:

- (i) Using simple, analytical models we show that the shape of the high-velocity tail is strongly dependent on the velocity anisotropy and density profile of the halo stars. We find that for a fixed gravitational potential, systems with highly radial velocity anisotropy and/or shallow density profiles have more extended velocity tails.
- (ii) The shape of the high-velocity tails in the Auriga simulations agrees with the predictions from the analytical models. We further find that the assembly history of the halo, namely the mass and

epoch of the most massive dwarf satellite mergers, impacts the form of the high-velocity tail. We also use the simulations to define the outer radial boundary for the escape velocity. An appropriate choice, based on the orbits of the stars in the simulations, is $2r_{200}$.

(iii) By modelling the high-velocity tail with a functional form $\propto (v_{\text{esc}} - v)^k$ (LT90), we use the simulations to construct an appropriate prior on k . Recent observations of highly eccentric orbits in the inner halo, caused by a massive, early accretion event, conspire to form a prior appropriate for relatively extended velocity tails, with $1 < k < 2.5$. This allowed range of k is lower than previous priors derived from cosmological simulations (Smith et al. 2007; Piffl et al. 2014), as these works consider the entire range of assembly histories available rather than the particular case of the Milky Way.

(iv) We apply our formalism to *Gaia* DR2 and measure a local escape velocity of $v_{\text{esc}}(r_0) = 528^{+24}_{-25} \text{ km s}^{-1}$. We use the definition of the escape boundary ($2r_{200}$) to relate this measurement to the total Milky Way mass. By combining our escape velocity measurement with the local circular velocity ($v_c(r_0) = 230 \text{ km s}^{-1}$, Eilers et al. 2019), we find $M_{200,\text{tot}} = 1.00^{+0.31}_{-0.24} \times 10^{12} M_{\odot}$, and $c_{200} = 10.9^{+4.4}_{-3.3}$. Our mass and concentration measurements are in good agreement with Callingham et al. (2019) (see also Patel et al. 2018), who use a completely independent methodology to model the dynamics of satellite galaxies out to the virial radius of the Galaxy.

The premise of this work is to use our knowledge of the assembly history of the Milky Way halo, and the corresponding phase-space distribution of halo stars, to inform our modelling of the high-velocity tail, and hence place a stronger constraint on the mass of the Milky Way. In the past months since the first astrometric *Gaia* data release, our knowledge of the Milky Way halo has increased dramatically. Now we can start to use that knowledge to inform our models, and reduce the wide parameter space set by cosmic variance. In the present application to the high-velocity tail, the Universe has conspired to be kind to us. The dominance of an early, massive accretion event, and the resulting highly eccentric orbits of the halo stars, leads to an extended, and well-defined, high-velocity tail. This fortuitous situation allows us to make a robust measurement of the local escape velocity, and hence the total Milky Way mass. The future *Gaia* data releases will continue to further our knowledge, and place even tighter constraints on these fundamental parameters.

ACKNOWLEDGEMENTS

We thank the referee of our paper, Matthias Steinmetz, for his insightful comments and suggestions.

AD is supported by a Royal Society University Research Fellowship. AF is supported by a European Union COFUND/Durham Junior Research Fellowship (under EU grant agreement no. 609412). AD and AF also acknowledge the support from the STFC grant ST/P000541/1. The research leading to these results has received funding from the European Research Council under the European Union's Seventh Framework Programme (FP/2007-2013) / ERC Grant Agreement n. 308024.

This work has made use of data from the European Space Agency (ESA) mission *Gaia* (<https://www.cosmos.esa.int/gaia>), processed by the *Gaia* Data Processing and Analysis Consortium (DPAC, <https://www.cosmos.esa.int/web/gaia/dpac/consortium>). Funding for the DPAC has been provided by national institutions, in particular the institutions participating in the *Gaia* Multilateral Agreement.

This work used the DiRAC Data Centric system at Durham University, operated by ICC on behalf of the STFC DiRAC HPC Facility (www.dirac.ac.uk). This equipment was funded by BIS National E-infrastructure capital grant ST/K00042X/1, STFC capital grant ST/H008519/1, and STFC DiRAC Operations grant ST/K003267/1 and Durham University. DiRAC is part of the National E-Infrastructure.

AD thanks the staff at the Durham University Day Nursery who play a key role in enabling research like this to happen.

REFERENCES

- Alexander J. B., 1982, *MNRAS*, 201, 579
- Belokurov V., Erkal D., Evans N. W., Koposov S. E., Deason A. J., 2018, *MNRAS*, 478, 611
- Binney J., Tremaine S., 1987, *Galactic dynamics*. Princeton Univ. Press, Princeton
- Blaauw A., 1961, *Bull. Astron. Inst. Netherlands*, 15, 265
- Bland-Hawthorn J., Gerhard O., 2016, *ARA&A*, 54, 529
- Bond N. A. et al., 2010, *ApJ*, 716, 1
- Bose S., Deason A. J., Frenk C. S., 2018, *ApJ*, 863, 123
- Boubert D., Evans N. W., 2016, *ApJ*, 825, L6
- Boubert D., Guillochon J., Hawkins K., Ginsburg I., Evans N. W., Strader J., 2018, *MNRAS*, 479, 2789
- Boylan-Kolchin M., Bullock J. S., Kaplinghat M., 2012, *MNRAS*, 422, 1203
- Boylan-Kolchin M., Bullock J. S., Sohn S. T., Besla G., van der Marel R. P., 2013, *ApJ*, 768, 140
- Bromley B. C., Kenyon S. J., Brown W. R., Geller M. J., 2018, *ApJ*, 868, 25
- Brown W. R., 2015, *ARA&A*, 53, 15
- Brown W. R., Geller M. J., Kenyon S. J., Kurtz M. J., 2005, *ApJ*, 622, L33
- Bryan G. L., Norman M. L., 1998, *ApJ*, 495, 80
- Caldwell J. A. R., Ostriker J. P., 1981, *ApJ*, 251, 61
- Callingham T. M. et al., 2019, *MNRAS*, 484, 5453
- Carney B. W., Latham D. W., Laird J. B., 1988, *AJ*, 96, 560
- Cautun M., Frenk C. S., van de Weygaert R., Hellwing W. A., Jones B. J. T., 2014, *MNRAS*, 445, 2049
- Cooper A. P., Parry O. H., Lowing B., Cole S., Frenk C., 2015, *MNRAS*, 454, 3185
- Crain R. A. et al., 2015, *MNRAS*, 450, 1937
- Davis M., Efstathiou G., Frenk C. S., White S. D. M., 1985, *ApJ*, 292, 371
- Deason A. J., Belokurov V., Evans N. W., 2011a, *MNRAS*, 411, 1480
- Deason A. J., Belokurov V., Evans N. W., 2011b, *MNRAS*, 416, 2903
- Deason A. J., Belokurov V., Koposov S. E., Gómez F. A., Grand R. J., Marinacci F., Pakmor R., 2017, *MNRAS*, 470, 1259
- Deason A. J., Belokurov V., Koposov S. E., Lancaster L., 2018, *ApJ*, 862, L1
- Di Matteo P., Haywood M., Lehnert M. D., Katz D., Khoperskov S., Snaith O. N., Gómez A., Robichon N., 2018, preprint ([arXiv:1812.08232](https://arxiv.org/abs/1812.08232))
- Dutton A. A., Macciò A. V., 2014, *MNRAS*, 441, 3359
- Eadie G., Jurić M., 2018, preprint ([arXiv:1810.10036](https://arxiv.org/abs/1810.10036))
- Eilers A.-C., Hogg D. W., Rix H.-W., Ness M., 2019, *ApJ*, 871, 120
- Evans N. W., Hafner R. M., de Zeeuw P. T., 1997, *MNRAS*, 286, 315
- Faber S. M., Gallagher J. S., 1979, *ARA&A*, 17, 135
- Faccioli L., Smith M. C., Yuan H.-B., Zhang H.-H., Liu X.-W., Zhao H.-B., Yao J.-S., 2014, *ApJ*, 788, 105
- Fattahi A. et al., 2019, *MNRAS*, 484, 4471
- Gaia Collaboration et al., 2016, *A&A*, 595, A1
- Gaia Collaboration et al., 2018, *A&A*, 616, A1
- Grand R. J. J. et al., 2017, *MNRAS*, 467, 179
- Hattori K., Valluri M., Bell E. F., Roederer I. U., 2018, *ApJ*, 866, 121
- Hawkins K., Wyse R. F. G., 2018, *MNRAS*, 481, 1028
- Haywood M., Di Matteo P., Lehnert M. D., Snaith O., Khoperskov S., Gómez A., 2018, *ApJ*, 863, 113
- Helmi A., Babusiaux C., Koppelman H. H., Massari D., Veljanoski J., Brown A. G. A., 2018, *Nature*, 563, 85
- Hills J. G., 1988, *Nature*, 331, 687

- Iorio G., Belokurov V., Erkal D., Koposov S. E., Nipoti C., Fraternali F., 2018, *MNRAS*, 474, 2142
- Jaffe W., 1987, in de Zeeuw P. T., ed., *IAU Symposium Vol. 127, Structure and Dynamics of Elliptical Galaxies*, D. Reidel Publishing Co., p. 511
- Jenkins A., 2013, *MNRAS*, 434, 2094
- Kendall M., Stuart A., 1977, *The advanced theory of statistics. Vol.1: Distribution theory*. C. Griffin & co., London
- Kennedy R., Frenk C., Cole S., Benson A., 2014, *MNRAS*, 442, 2487
- Klypin A., Zhao H., Somerville R. S., 2002, *ApJ*, 573, 597
- Kochanek C. S., 1996, *ApJ*, 457, 228
- Leonard P. J. T., Duncan M. J., 1990, *AJ*, 99, 608
- Leonard P. J. T., Tremaine S., 1990, *ApJ*, 353, 486 (LT90)
- Lindgren L., 2018, Re-normalising the astrometric chi-square in Gaia DR2, GAIA-C3-TN-LU-LL-124. Available at: <http://www.rssd.esa.int/doc/etch.php?id=3757412>
- Lovell M. R., Frenk C. S., Eke V. R., Jenkins A., Gao L., Theuns T., 2014, *MNRAS*, 439, 300
- Ludlow A. D., Bose S., Angulo R. E., Wang L., Hellwing W. A., Navarro J. F., Cole S., Frenk C. S., 2016, *MNRAS*, 460, 1214
- Macciò A. V., Dutton A. A., van den Bosch F. C., 2008, *MNRAS*, 391, 1940
- McMillan P. J., 2018, *Res. Notes Am. Astron. Soc.*, 2, 51
- Malhan K., Ibata R. A., 2018, preprint ([arXiv:1807.05994](https://arxiv.org/abs/1807.05994))
- Marchetti T., Rossi E. M., Brown A. G. A., 2018, *MNRAS*
- Marinacci F., Grand R. J. J., Pakmor R., Springel V., Gómez F. A., Frenk C. S., White S. D. M., 2017, *MNRAS*, 466, 3859
- Miyamoto M., Nagai R., 1975, *PASJ*, 27, 533
- Monachesi A. et al., 2018, preprint ([arXiv:1804.07798](https://arxiv.org/abs/1804.07798))
- Monari G. et al., 2018, *A&A*, 616, L9
- Myeong G. C., Evans N. W., Belokurov V., Sanders J. L., Koposov S. E., 2018, *ApJ*, 856, L26
- Navarro J. F., Frenk C. S., White S. D. M., 1996, *ApJ*, 462, 563
- Navarro J. F., Frenk C. S., White S. D. M., 1997, *ApJ*, 490, 493
- Patel E., Besla G., Mandel K., Sohn S. T., 2018, *ApJ*, 857, 78
- Piffi T. et al., 2014, *A&A*, 562, A91
- Pila-Díez B., de Jong J. T. A., Kuijken K., van der Burg R. F. J., Hoekstra H., 2015, *A&A*, 579, A38
- Planck Collaboration XVI et al., 2014, *A&A*, 571, A16
- Plummer H. C., 1911, *MNRAS*, 71, 460
- Portegies Zwart S. F., 2000, *ApJ*, 544, 437
- Posti L., Helmi A., 2019, *A&A*, 621, A56
- Pouliasis E., Di Matteo P., Haywood M., 2017, *A&A*, 598, A66
- Poveda A., Ruiz J., Allen C., 1967, *Boletín de los Observatorios Tonantzintla y Tacubaya*, 4, 86
- Purcell C. W., Zentner A. R., 2012, *J. Cosmol. Astropart. Phys.*, 12, 007
- Rubin V. C., Ford Jr. W. K., Thonnard N., 1980, *ApJ*, 238, 471
- Sandage A., Fouts G., 1987, *AJ*, 93, 74
- Schaller M. et al., 2015, *MNRAS*, 451, 1247
- Schaye J. et al., 2015, *MNRAS*, 446, 521
- Schönrich R., Binney J., Dehnen W., 2010, *MNRAS*, 403, 1829
- Sesar B., Jurić M., Ivezić Ž., 2011, *ApJ*, 731, 4
- Shen K. J. et al., 2018, *ApJ*, 865, 15
- Smith M. C. et al., 2007, *MNRAS*, 379, 755
- Smith M. C. et al., 2009, *MNRAS*, 399, 1223
- Springel V., 2010, *MNRAS*, 401, 791
- Tremaine S. D., 1987, in de Zeeuw P. T., ed., *IAU Symposium Vol. 127. Structure and Dynamics of Elliptical Galaxies*, D. Reidel Publishing Co., p. 367
- Vasiliev E., 2019, *MNRAS*, 484, 2832
- Wang J., Frenk C. S., Navarro J. F., Gao L., Sawala T., 2012, *MNRAS*, 424, 2715
- Watkins L. L., van der Marel R. P., Sohn S. T., Evans N. W., 2018, preprint ([arXiv:1804.11348](https://arxiv.org/abs/1804.11348))
- Williams A. A., Belokurov V., Casey A. R., Evans N. W., 2017, *MNRAS*, 468, 2359
- Yu Q., Tremaine S., 2003, *ApJ*, 599, 1129
- Zolotov A., Willman B., Brooks A. M., Governato F., Brook C. B., Hogg D. W., Quinn T., Stinson G., 2009, *ApJ*, 702, 1058

This paper has been typeset from a $\text{\TeX}/\text{\LaTeX}$ file prepared by the author.