





Research Article

Diabetes Detection System by Mixing Supervised and Unsupervised Algorithms

Rasool F. Jader ^{1,*} , Sadegh Aminifar ¹ , Mudhafar Haji M. Abd ¹ 

¹ Computer Science Department, Faculty of Science, Soran University, Soran, 44008, Iraq

*Corresponding Author: Rasool F. Jader, E-mail: rasool.jader@soran.edu.iq

Article Info	Abstract
Article History	Diabetes mellitus is also called gestational diabetes when a woman has high blood sugar while pregnant. It can show up at any time during pregnancy and cause problems for the mother and baby during or after the pregnancy. If the risks are found and dealt with as soon as possible, there is a chance that they can be reduced. The healthcare system is one of the many parts of our daily lives that are being rethought thanks to the creation of intelligent systems by machine learning algorithms. In this article, a hybrid prediction model is suggested to determine if a woman has gestational diabetes. The recommended model reduces the amount of data using the K-means clustering method. Predictions are made using several classification methods, such as decision trees, random forests, SVM, KNN, logistic regression, and naive Bayes. The results show that accuracy increases when clustering and classification are used together.
Received Aug 20, 2022	
Revised Sep 03, 2022	
Accepted Sep 05, 2022	
Keywords	
Supervised Learning	
Unsupervised Learning	
Machine Learning	
Clustering	
Classification	
 Copyright: © 2022 Rasool F. Jader, Sadegh Aminifar, and Mudhafar Haji M. Abd. This article is an open-access article distributed under the terms and conditions of the Creative Commons Attribution (CC BY 4.0) license.	

1. Introduction

Diabetes mellitus during pregnancy, also known as gestational diabetes, is one of the most frequent complications that may arise, affecting about one in every six live births globally [1, 2]. Any degree of glucose inability, with the onset of symptoms occurring during pregnancy, is the definition of this condition. Alehegn, Joshi, and Alehegn [4] discussed that GD may strike at any point during pregnancy, producing complications for the mother and baby throughout pregnancy and after the baby is born. The potential consequences will be reduced if the risks are recognized and mitigated early. Algorithms for machine learning are being used to create intelligent systems, which are bringing about changes in every facet of our life. Artificial intelligence makes the lives of patients, clinicians, and hospital managers simpler by automating tasks humans normally carry out [3]. The current goals for AI include reducing the number of incorrect diagnoses of diabetes and developing more effective medical treatment methods [8]. These days, healthcare systems create vast volumes of data. Thus, more complex systems rely on this data to construct more precise models. The purpose of this work is to attempt to construct a model that can examine both current and historical instances of diabetes to forecast and diagnose future cases using machine learning techniques, which may be of use to patients and hospital administrators [5].

Moreover, we attempted to determine, via machine learning algorithms, which model has the highest degree of precision with the least amount of mistakes. In the Iraqi Kurdistan Region, we attempted to work with a data set obtained from governmental and private labs. It is important to note that this was our goal. The information we have gathered consists of the subjects' ages, weights, heights, gestational numbers, family medical history, and the results of their diabetes tests. This information reveals at what ages and circumstances pregnant women are more likely to develop gestational diabetes. The remains of this paper are structured as follows: Section 2 explains the backgrounds and several studies of related work. Section 3 describes the methodology of the proposed model, and Section 4 discusses the results. Finally, section 5 expresses the conclusion.

2. Background and Literature Review

This section explains the backgrounds of machine learning methods used in this research and several studies of related works.

2.1. Machine learning (ML)

Smarter processing, operation, and optimization of future communication networks will be required as the scope of applications grow [7, 8]. ML, also known as AI vessels, must be integrated into designing, planning, and optimizing future communication networks to accomplish this intellectual processing and process vision.

2.1.1. Supervised learning

Supervised learning techniques are used to create a mathematical model from a dataset. The data inputs and expected results are included in this model. The relevant data is known as training data, including training instances. One or more inputs and the desired output (also known as a supervisory signal) make up each training sample. While a matrix describes the training data, a vector or array represents each training example in the model. Arrays and vectors may sometimes be referred to as "feature vectors."

2.1.2. Clustering Algorithm

Clustering is a technique for machine learning that involves dividing a collection of data points or a set of data points into numerous groups, with data points that are part of the same group being more similar to one another than data points that are part of different groups are to data points that are part of different groups. This section is going to explain the procedure for clustering. Put another way, and the goal is to

build clusters out of groups with characteristics in common with other types [2]. Clustering is a procedure that, when applied to the field of data science, has the potential to be of assistance. The strategy that is used in this approach [18] involves analyzing the degree of dissimilarity that exists between the clusters as well as the amount of similarity that exists within each cluster. This approach aims to establish whether or not a data collection has a cluster structure of some kind. In order to reduce the amount of information we were responsible for analyzing as part of our study project, we used the k-means approach, the clustering algorithm that is the most well-known and regularly used at present. Throughout the study that has been carried out, the k-means algorithm has been improved in several different ways in order to accommodate the findings. The k-means method and its extensions that include a certain minimum number of clusters will always, in some way, be influenced by the initializations that are performed.

2.1.3. Unsupervised learning

Unsupervised learning algorithms are given an unlabeled dataset and tasked with discovering patterns and relationships within it by grouping or clustering individual data points. As a result, the algorithms learn from test data that has not been preprocessed in any manner (such as by labeling or categorizing). Instead of responding to feedback, unsupervised learning algorithms actively seek patterns in the data and adjust their behavior accordingly. They act in this manner rather than reacting to criticism. One of the most useful uses of unsupervised learning is finding the probability density function. Although unsupervised learning may be used in various contexts, including those that call for summarizing and analyzing data, one such context is density estimation in statistics.

2.1.4. Decision Tree

A decision tree is an algorithmic tool that may be used in data segmentation depending on certain data properties. This is what the appearance of one of the algorithms for supervised learning was like. In order to create a mental model capable of reliably predicting the value of a target variable, the goal is to get acquainted with the core decision tree instructions as quickly as possible. It is well suited for education that continues throughout one's life. The rules are often formulated as if-then-else clauses, and the decision tree is structured to correspond to these [19]. The categorization method uses decision trees, which do not call for a significant amount of processing capacity from the computer. Continuous data is made easier using the decision tree, a handy tool [5].

2.1.5. Random Forest

Random Forest is a method for the reduction of dimensionality that uses a large number of decision trees to construct a classification. This is an example of an ensemble approach that may be used for classification and other problems [8]. It is possible to use it to order the variables in terms of their significance [7].

2.1.6. Support Vector Machine

Support vector machines are used to locate a hyperplane line that separates the positive and negative samples by the largest feasible margin [6]. The objective of the support vector machine is to locate, in the space occupied by the Multidimensional Features, a hyperplane capable of correctly classifying the data points (SVM). An SVM model in which the instances are treated as points in space and the space is mapped in such a manner that the examples of the various categories are separated by as much space as is physically practicable is called a space-variant point model (SVPM). Following that, additional instances are mapped into the same region, and a category is given to them based on where in the gap they are placed.

2.1.7. K-Nearest Neighbors

Only a local version of KNN is simulated, and calculations are put off until after the classification procedure has been completed. The KNN algorithm [11] is a machine learning algorithm that is considered one of the most basic types available.

2.1.8. Logistic Regression

The generalized linear model is also known as logistic regression, another term for it. The linear components of nonlinear functions and the link function are subdivided into nonlinear functions. The link function is responsible for delivering the linear portion of the output that the classification model generates. In logistic regression, a logistic function is applied to the linear output to deal with it. The logistic function never produces results outside of the range of 0 to 1 [1].

2.1.9. Naïve Bayes

The Naive Bayes method is a classification strategy that can deal with missing values while it is in the process of classifying data. In order to categorize them, a supervised learning approach is used. The premise that Naive Bayes works based on conditional probability is this statistical methodology's central

tenet. Conditional independence breaks down for linked attributes, which causes Naive Bayes performance to degrade as a direct consequence [20]. The Naive Bayes method effectively works against noise points when calculating conditional probabilities.

2.2. Literature Review

This section briefly discusses several works on intelligent systems and machine learning methods for modelling and predicting different types of diabetes diagnoses.

For diabetes prediction, Al-Zebari, and Sengur [1] analyzed and compared the outcomes of different machine learning strategies. In this study, the MATLAB classification learner tool was utilized, and several machine learning techniques such as decision trees, support vector machines, K-nearest neighbor, and logistic regression were utilized. When it comes to performance measurements, the outcomes are judged according to how accurately they are classified.

Jader, and Aminifar [2] proposed a fast and accurate artificial neural network for predicting new cases of diabetes. This research designed an artificial neural network prediction model for recognizing diabetes mellitus. The criterion of this paper was to minimize the error function in neural network training using a neural network model design. After designing the ANN model, the error rate of the neural network decreased during training, based on its designing process, and the accuracy of the prediction increased to 91%. The results showed that the ANN algorithm improves prediction accuracy based on its network design.

Alapati, and Sindhu [3] looked at 768 samples of data from the Pima Indian Diabetes Dataset (PIDD) and used predictive algorithms like K-Nearest Neighbor, Nave Bayes, Random Forest, and J48 to create an ensemble learning by combining different machine learning techniques into one. This improved the accuracy of the suggested system's performance. This was done to combine different machine learning techniques to make an ensemble learning.

Alehegn, Joshi, and Alehegn [4] analyzed 768 samples of data from the (PIDD) Pima Indian Diabetes Dataset by using predictive algorithms such as K-Nearest Neighbor, Nave Bayes, Random Forest, and J48 to create an ensemble learning by merging particular machine learning techniques within one to enhance the accuracy of the suggested system's performance. Researchers used different data mining methods and machine learning algorithms to examine different medical data sets. This showed that machine learning methods work differently with different sets of data. Moreover, the single algorithm was less accurate than

the ensemble algorithm. The authors discussed that in most studies, the accuracy of the decision tree was high. In their research, they use tools to predict diabetes datasets, a hybrid system made up of Weka and Java.

Conway [10] highlighted the PIMA Indian dataset to show how machine learning can predict whether or not a pregnant woman has gestational diabetes. The first thing they do is clean up their data to be as accurate as possible. The accuracy of each method was compared using the scores for the Receiver Operating Characteristic (ROC) and the Area Under the Curve (AUC). A picture of the results of the confusion matrix of algorithms was used to judge how well the models worked and where they fell short. The results of this study show that adjusting the parameters of machine learning algorithms can make them more accurate.

Gnanadass [11] discusses the different machine learning methods for predicting gestational diabetes for pregnant women using the PIMA Indian dataset. To make it more accurate, the author cleans the data at first. The accuracies of all methods were compared using Receiver Operating Characteristic (ROC) and Area Under the Curve (AUC) scores. The result of the confusion matrix of algorithms was illustrated to determine the efficacy and errors of the models. This research proves that the accuracy of the machine learning algorithms may be improved by adjusting their parameters. In this paper, the researcher used the Ensemble Method, which is a combination of several machine learning methods., As shown in the result, the accuracy of the techniques used in Ensemble Learning Used XG-Boost had the best accuracy and result of 77.5%.

Sinaga and Yang [19] try to find a better way to predict diabetes risk. Models are put into groups with Decision Tree (DT), Artificial Neural Network (ANN), Naïve Bayes (NB), and Support Vectors Machine (SVM). About 75% of the time, all four models are about right. The scientists' plan would use ML algorithms to predict data and show a comparison to find the most accurate treatment for diabetes. Without data, SVMs are great. Even without data, SVMs work well. SVM can work with semi-structured and unstructured data, like images and text. SVM needs certain parameters to be set because the algorithm needs it. The DT is changing the best way to organize data. Naive Bayes skips over missing-value probabilities. This is good for large datasets. Preparedness-minded. Adding more data to a training set makes bias worse. ANN is accurate and easy to use. It takes time to process complex data.

Sonar and Malini [20] have discussed the link between high blood sugar levels and the development of diabetes. In addition, many distinct intelligent systems that use classifiers to anticipate and anticipate diabetes utilizing machine learning methods such as decision trees, SVMs, Naive Bayes, and ANN algorithms were shown. Based on these groupings, diabetes risk might be estimated.

3. Methodology

Combinations of machine learning techniques are used in the model that has been suggested. According to the flow chart shown in Figure 1, the model employs the supervised approach for data reduction. For prediction, the model also incorporates unsupervised techniques such as the classification algorithms: decision tree, random forest, SVM, KNN, logistic regression, and naive Bayes.

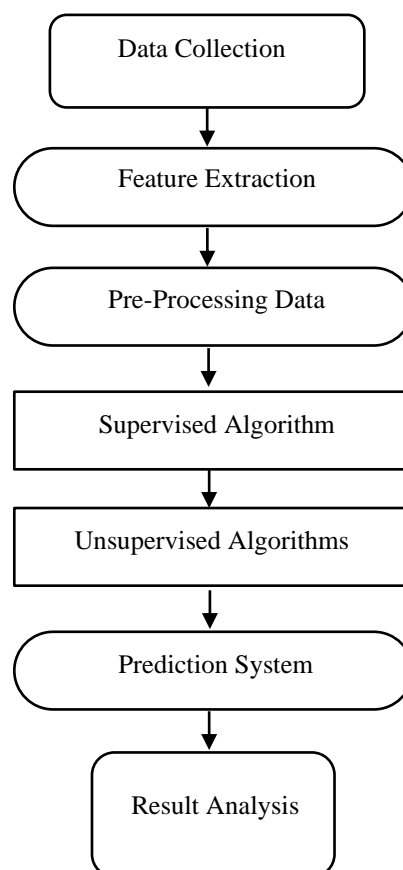


Figure 1. The Flow Chart of The Proposed Model

3.1. Data Collection

These apps that have been upgraded rely on the large amounts of data gathered by healthcare systems and laboratories worldwide [12]. This allows the updated apps to work more effectively and deliver more accurate results. Our models were trained using data from a range of governmental and commercial laboratories inside the Iraqi Kurdistan Region. These labs were located across Iraq. The data collection included

730 unique examples, each with one of seven distinct criteria. The attributes are shown in Table 1, and the data types correspond to those features.:

Table 1. The Attributes and Data Types of Training Dataset.

No.	Attributes	Data Types
1	Age	Numeric
2	Weight	Numeric
3	Height	Numeric
4	BMI	Numeric
5	Pregnancy Number	Numeric
6	Heredity	Boolean
7	Blood Sugar Test	Boolean

3.2. Feature Extraction

Feature extraction is a great technique to apply when you need to reduce the number of features required for processing but do not want to lose crucial or relevant information. This may be accomplished with the aid of feature extraction. Another possible advantage of feature extraction is removing duplicated information from within the dataset [19]. The body mass index may be calculated based on the datasets we have for weight and height, which represent and are utilized to compute it (BMI). As seen in Equation 1, there was a substantial and positive connection between BMI and weight, but there was a significant and negative correlation between BMI and height. These results were found to be statistically significant.

$$BMI = \frac{Weight}{(Height)^2} \quad (1)$$

3.3. Data Pre-Processing

One of the ways of processing data is known as data normalization [15]. This method is used to convert unintelligible data into understandable data collection. Normalize data is a scaling or mapping method for transforming unnormal data into normal data [16]. The Z-score method, which is the process of normalizing every value in the dataset, was included in our model using the Z-score methodology. The formula for normalizing z-scores can be found in Equation 2, while the formula for calculating standard deviation, which was required to produce a z-score, can be found in Equation 3.

$$z = (x_i - \mu) / \sigma \quad (2)$$

$$\sigma = \sqrt{\frac{\sum (x_i - \mu)^2}{N-1}} \quad (3)$$

3.4. Clustering Algorithm

Clustering is a machine learning method that divides a collection of data points into numerous groups, with data points within the same group being more similar to one another than data points in other groups being to data points in other groups. The clustering method is going to be explained here. Put another way, and the objective is to form clusters out of groupings that share features with other categories [2]. In the realm of data science, clustering is a process that may prove to be helpful. Analyzing the degree of dissimilarity between the clusters and the amount of similarity within each cluster is the method used in this approach [18]. This method aims to determine whether or not a data collection has a cluster structure. We used the k-means technique, the clustering algorithm that is the most well-known and commonly utilized currently available, to cut down on the quantity of data that we required to evaluate for our research project. The k-means algorithm has been expanded upon in various ways during the research that has been carried out. The k-means approach and its expansions with a required minimum number of clusters will always be affected by initializations in some manner.

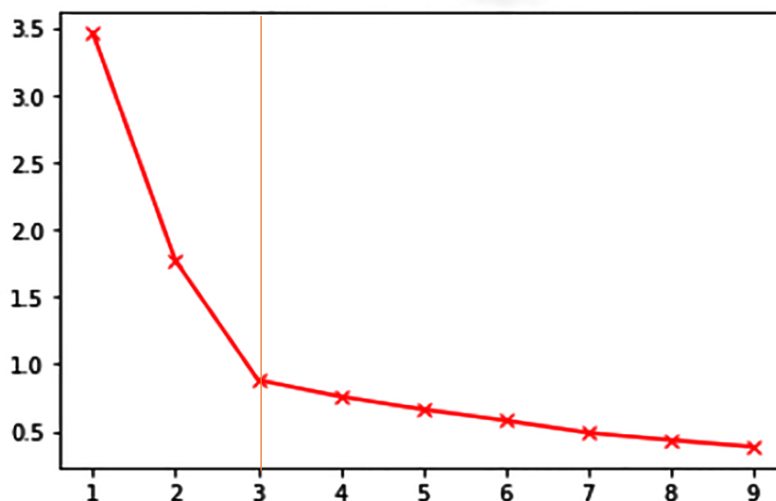


Figure 1. Determine The Knee Value of The Elbow Method

On the other hand, clustering may be performed by unsupervised learning [13], which is used in pattern recognition and machine learning. When using an approach that is not supervised, choosing an adequate number of clusters within which the data may be classified is of the highest need. In order to determine the value of k that should be applied to KMeans clusters, we used The Elbow Method, one of the

most well-known ways to determine the value of k that should be applied to those clusters. In doing so, we could determine the best k to apply to those clusters. In the Elbow technique, what we are doing is counting the number of clusters that are represented by (K), as shown in Figure 2, and calculating the WCSS (Within-Cluster Sum of Square) points for each value of K . This is what is meant by the term "counting the number of clusters that are represented by (K)".

3.5. Classification Algorithm

The outputs of the clustering step, in which data is reduced and organized into a specific group, serve as an input for the classifier algorithms. The classification stage follows this stage. These methods include assigning a sample of the data used in the stage before this one to a cluster of fresh input data that is analogous to the cluster the sample used for in the stage before this one. The newly designed system incorporates several classification strategies, including a decision tree, a random forest, a support vector machine (SVM), a K-Nearest Neighbor (KNN), logistic regression, and naive Bayes. Other strategies include naive Bayes and naive decision trees.

3.6. Prediction System

The code for the suggested model was written using the computer language Python, and a confusion matrix was used so that several classification techniques could be evaluated and compared to one another. In the course of our investigation, we used several different comparison criteria, including accuracy, precision, and recall. The component that determines the number of correctly recognized predictions is called accuracy and the formula for calculating accuracy can be found in Equation 4. Precision may be defined as the proportion of accurately detected true positives relative to the total number of positive samples in a sample set. The total number of positive samples equals the sum of the number of samples correctly categorized and incorrectly classified. Equation 5 contains the formula, which shows the accuracy of correctly classified positive samples, total positive samples, and total false negative samples. The formula is shown in Equation 6 in its recall or sensitivity of the model.

$$\text{Accuracy} = (\text{correct predictions})/(\text{total}) \quad (4)$$

$$\text{Precision} = (TP)/(TP + FP) \quad (5)$$

$$\text{Recall} = (TP)/(TP + FN) \quad (6)$$

4. Result Analysis

Using a combination of supervised and unsupervised algorithms in this research presents a reliable method for predicting models that may be used to recognize gestational diabetes mellitus. In the beginning, we solely used classification techniques; after that, we used a combination of unsupervised KMeans clustering algorithm and classification methods in the recommended model. According to Table 2, the proposed model provides more accurate results than the currently used classification methods for pregnant women with diabetes.

Table 2. The Classification accuracy in the proposed model

NO.	Algorithms	Proposed Model
1	Decision Tree	0.89
2	Random Forest	0.91
3	SVM	0.92
4	KNN	0.91
5	Logistic Regression	0.92
6	Naïve Bayes	0.89

The final result is obtained from the confusion matrix and calculates precision, accuracy, and recall. The tables below illustrate the confusion matrix of each method that we used in this model. It is easy to understand what classification model gets right and what kinds of mistakes it makes

Table 3. CM of Decision Tree

DT	0	1
0	114	5
1	8	1

Table 4. CM of Random Forest

RF	0	1
0	116	3
1	8	1

Table 5. CM of SVM

SVM	0	1
0	119	0
1	9	0

Table 6. CM of KNN

KNN	0	1
0	116	3
1	8	1

Table 7. CM of Logistic Regression

LR	0	1
0	119	0
1	9	0

Table 8. CM of Naïve Bayes

NB	0	1
0	110	9
1	4	5

We compare the proposed model to some previously obtained accuracy from intelligent models created by existing research. Table 9. shows that, in most cases, the proposed model (shown in Table 2.) has better accuracy.

Table 9. The Classification accuracy in the proposed model.

NO.	Algorithms	Accuracy	Reference
1	DT	78.17%	[6] (AlJarullah, 2011)
2	RF	91%	[15] (Mujumdar and Vaidehi, 2019)
3	SVM	77.3%	[20] (Sonar and Jaya Malini, 2019)
4	KNN	77%	[18] (Sarwar et al., 2018)
5	LR	77.9%	[1] (Al-Zebari and Sengur, 2019)
6	NB	79.84%	[12] (Jeevan Nagendra Kumar et al., 2019)

5. Conclusions

The dataset we used to build our proposed model came from public and private laboratories in the Kurdistan Region of Iraq. The data collection had 730 different instances and 7 different characteristics. To recognize gestational diabetes, a hybrid prediction model within the framework of the suggested model has been created. The K-means clustering algorithm is employed in the recommended model to reduce the amount of data. Several classification methods are used for classification and prediction, including decision trees, random forests, SVM, KNN, logistic regression, and naive Bayes. The accuracy acquired via each technique of supervised and unsupervised algorithms improved performance compared to previous works. According to the data, combining clustering with classification results in an improvement in accuracy.

Declaration of Competing Interest: The authors declare they have no known competing interests.

References

- [1] Al-Zebari, A. and Sengur, A. (2019) 'Performance Comparison of Machine Learning Techniques on Diabetes Disease Detection', 1st International Informatics and Software Engineering Conference: Innovative Technologies for Digital Transformation, IISEC 2019 - Proceedings, pp. 2-5.
- [2] Jader, R. and Aminifar, S., 2022. Fast and Accurate Artificial Neural Network Model for Diabetes Recognition. *NeuroQuantology*, 20(10), pp.2187-2196.
- [3] Alapati, Y. and Sindhu, K. (2016) 'Combining Clustering with Classification: A Technique to Improve Classification Accuracy', *International Journal of Computer Science Engineering*, 5(06), pp. 336-338.

- [4] Alehegn, M., Joshi, R. and Alehegn, M. (2017) 'Analysis and prediction of diabetes diseases using machine learning algorithm: Ensemble approach.', *International Research Journal of Engineering and Technology*, 4(10), pp. 426-436. Available at: www.irjet.net.
- [5] Ali, N. et al. (2021) 'Effect of gestational diabetes mellitus history on future pregnancy behaviors: The Mutaba'ah study', *International Journal of Environmental Research and Public Health*, 18(1), pp. 1-12.
- [6] AlJarullah, A. A. (2011) 'Decision tree discovery for the diagnosis of type II diabetes', 2011 International Conference on Innovations in Information Technology, IIT 2011, pp. 303-307.
- [7] Barakat, N., Bradley, A. P. and Barakat, M. N. H. (2010) 'Intelligible support vector machines for diagnosis of diabetes mellitus', *IEEE Transactions on Information Technology in Biomedicine*, 14(4), pp. 1114-1120.
- [8] Benbelkacem, S. and Atmani, B. (2019) 'Random forests for diabetes diagnosis', 2019 International Conference on Computer and Information Sciences, ICCIS 2019, pp. 1-4.
- [9] Choudhury, A. and Gupta, D. (2019) *A Survey on Medical Diagnosis of Diabetes Using Machine Learning Techniques, Advances in Intelligent Systems and Computing*. Springer Singapore.
- [10] Conway, D. L. (2012) 'Gestational Diabetes Mellitus', *Queenan's Management of High-Risk Pregnancy: An Evidence-Based Approach: Sixth Edition*, 26, pp. 168-173.
- [11] Gnanadass, I. (2020) 'Prediction of Gestational Diabetes by Machine Learning Algorithms', *IEEE Potentials*, 39(6), pp. 32-37.
- [12] Jeevan Nagendra Kumar, Y. et al. (2019) 'Prediction of diabetes using machine learning', *International Journal of Innovative Technology and Exploring Engineering*, 8(7), pp. 2547-2551.
- [13] Jiang, F. et al. (2017) 'Artificial intelligence in healthcare: Past, present and future', *Stroke and Vascular Neurology*, 2(4), pp. 230-243.
- [14] Likas, A., Vlassis, N. and Verbeek, J. (2011) 'The global k-means clustering algorithm Intelligent Autonomous Systems', ISA technical report series.
- [15] Mujumdar, A. and Vaidehi, V. (2019) 'Diabetes Prediction using Machine Learning Algorithms', *Procedia Computer Science*, 165, pp. 292-299.
- [16] Patro, S. G. K. and sahu, K. K. (2015) 'Normalization: A Preprocessing Stage', *Iarjset*, pp. 20-22.
- [17] Saravana Kumar, N. M. et al. (2015) 'Predictive methodology for diabetic data analysis in big data', *Procedia Computer Science*, 50, pp. 203-208.
- [18] Sarwar, M. A. et al. (2018) 'Prediction of diabetes using machine learning algorithms in healthcare', *ICAC 2018 - 2018 24th IEEE International Conference on Automation and Computing: Improving Productivity through Automation and Computing*, (September), pp. 1-6.
- [19] Sinaga, K. P. and Yang, M. S. (2020) 'Unsupervised K-means clustering algorithm', *IEEE Access*, 8, pp. 80716-80727.
- [20] Sonar, P. and Jaya Malini, K. (2019) 'Diabetes prediction using different machine learning approaches', *Proceedings of the 3rd International Conference on Computing Methodologies and Communication, ICCMC 2019, (Iccmc)*, pp. 367-371.
- [21] Vijayan, V. V. and Anjali, C. (2016) 'Prediction and diagnosis of diabetes mellitus - A machine learning approach', 2015 *IEEE Recent Advances in Intelligent Computational Systems, RAICS 2015, (December)*, pp. 122-127.
- [22] H. Q. Awla, A. Rahman Mirza and S. W. Kareem, "An Automated CAPTCHA for Website Protection Based on User Behavioral Model," 2022 8th International Engineering Conference on Sustainable Technology and Development (IEC), 2022, pp. 161-167.
- [23] Awla, H.Q., Kareem, S.W. and Mohammed, A.S., 2022. Bayesian Network Structure Discovery Using Antlion Optimization Algorithm. *International Journal of Systematic Innovation*, 7(1), pp.46-65.
- [24] Mirza, A.R. and Sah, M., 2017. Automated software system for checking the structure and format of ACM SIG documents. *New Review of Hypermedia and Multimedia*, 23(2), pp.112-140.

- [25] Hamad, A., Aminifar, S. and Daneshwar, M. (2020) 'An interval type-2 FCM for color image segmentation', *International Journal of Advanced Computer Research*, 10(46), pp. 12-17.
- [26] Aminifar, S. and Marzuki, A. (2013) 'Uncertainty in interval type-2 fuzzy systems', *Mathematical Problems in Engineering*, 2013.
- [27] Aminifar, S., 2014. Design and implementation of fuzzy controllers for handling uncertainty in an industrial application (Doctoral dissertation, Universiti Sains Malaysia).
- [28] Aminifar, S. (2020) 'Uncertainty Avoider Interval Type II Defuzzification Method', *Mathematical Problems in Engineering*. Edited by J. V. Salcedo, 2020, p. 5812163.
- [29] Marzuki, A., Tee, S. Y. and Aminifar, S. (2014) 'Study of fuzzy systems with Sugeno and Mamdani type fuzzy inference systems for determination of heartbeat cases on Electrocardiogram (ECG) signals', *International Journal of Biomedical Engineering and Technology*, 14(3), pp. 243-276.
- [30] Aminifar, S. and Bin Marzuki, A. (2013) 'Horizontal and vertical rule bases method in fuzzy controllers', *Mathematical Problems in Engineering*, 2013.