



Incorporating Variability in KYTC Planning and Project Development

Report Number: KTC-23-17

DOI: <https://doi.org/10.13023/ktc.rr.2023.17>





Kentucky Transportation Center
College of Engineering, University of Kentucky, Lexington, Kentucky

in cooperation with
Kentucky Transportation Cabinet
Commonwealth of Kentucky

The Kentucky Transportation Center is committed to a policy of providing equal opportunities for all persons in recruitment, appointment, promotion, payment, training, and other employment and education practices without regard for economic, or social status and will not discriminate on the basis of race, color, ethnic origin, national origin, creed, religion, political belief, sex, sexual orientation, marital status or age.

Kentucky Transportation Center
College of Engineering, University of Kentucky, Lexington, Kentucky

in cooperation with
Kentucky Transportation Cabinet
Commonwealth of Kentucky

© 2022 University of Kentucky, Kentucky Transportation Center
Information may not be used, reproduced, or republished without KTC's written consent.

Research Report

KTC-23-17

Incorporating Variability in KYTC Planning and Project Development

Reginald Souleyrette, Ph.D., P.E.
Program Manager

Teng (Alex) Wang, Ph.D., P.E.
Research Engineer

Riana Tanzen
Graduate Research Assistant

and

Arnold Stromberg, Ph.D.
Professor of Statistics

Kentucky Transportation Center
College of Engineering
University of Kentucky
Lexington, Kentucky

In Cooperation With
Kentucky Transportation Cabinet
Commonwealth of Kentucky

The contents of this report reflect the views of the authors, who are responsible for the facts and accuracy of the data presented herein. The contents do not necessarily reflect the official views or policies of the University of Kentucky, the Kentucky Transportation Center, the Kentucky Transportation Cabinet, the United States Department of Transportation, or the Federal Highway Administration. This report does not constitute a standard, specification, or regulation. The inclusion of manufacturer names or trade names is for identification purposes and should not be considered an endorsement.

April 2023

1. Report No. KTC-23-17	2. Government Accession No.	3. Recipient's Catalog No	
4. Title and Subtitle Incorporating Variability in KYTC Planning and Project Development		5. Report Date April 2023	
		6. Performing Organization Code	
7. Author(s): Reginald Souleyrette, Teng Wang, Riana Tanzen, and Arnold Stromberg		8. Performing Organization Report No. KTC-23-17	
9. Performing Organization Name and Address Kentucky Transportation Center College of Engineering University of Kentucky Lexington, KY 40506-0281		10. Work Unit No. (TR AIS)	
		11. Contract or Grant No. SPR 21-610	
12. Sponsoring Agency Name and Address Kentucky Transportation Cabinet State Office Building Frankfort, KY 40622		13. Type of Report and Period Covered	
		14. Sponsoring Agency Code	
15. Supplementary Notes			
16. Abstract Transportation planning and design decisions are typically made using point estimates of traffic and safety measures. This report addresses the uncertainty of data used to make these decisions. It focuses on two data elements — project safety ratings and volume estimates from traffic counts. For safety ratings, the Kentucky Transportation Cabinet's Strategic Highway Investment Formula for Tomorrow (SHIFT) crash history score is used as a case study. Confidence intervals are developed for the Cabinet's new safety metric, which incorporates estimates of future crashes by severity as well as excess expected crashes above safety goals. For traffic counts, the report develops confidence intervals based on daily and monthly expansion factors across multiple permanent count recording stations. Results should help users of these data better understand the range of data the point estimates represent and the likelihood that projects based on these plans and designs will function as expected.			
17. Key Words highway safety, planning, program management		18. Distribution Statement Unlimited	
19. Security Classification (report) Unclassified	20. Security Classification (this page) Unclassified	21. No. of Pages 61	19. Security Classification (report)

Table of Contents

Chapter 1 Introduction	1
Chapter 2 Literature Review	2
2.1 Kentucky	2
2.1.1 KYTC Highway Design Guidance Manual	2
2.1.2 DDSA Implementation Plan.....	2
2.1.3 SHIFT	3
2.1.4 CHAF User Guide.....	3
2.1.5 Highway Knowledge Portal	3
2.2 Other State Practices.....	3
Chapter 3 Uncertainty in SHIFT Safety Scoring	5
Chapter 4 Uncertainty in Traffic Estimation	9
4.1 Data Sources.....	9
4.1.1 ATR Data	9
4.1.2 Two-Day Count Data	9
4.2 Methodology	10
Chapter 5 Conclusions And Future Work	14
5.1 Conclusions.....	14
5.2 Future Work	14
References	15
Appendix A Shift Safety Score Ranking (Top 100)	17
Appendix B Traffic Count Monthly Factor And Daily Factor Table	20

List of Figures

Figure 3.1 Hypothetical Example of Project Ranks with Ranges	5
Figure 3.2 Ranges of Scores (SHIFT 2022 Top 50 Projects)	7
Figure 3.3 Ranges of Ranks (SHIFT 2022 Top 50 Projects)	8

List of Tables

Table 2.1 State DOT Documents Reviewed	3
Table 4.1 Continuous Data Program: Automated Traffic Recorder (ATR) Data.....	9
Table 4.2 Short Duration Data Program: Short-Term Hourly Volume	10
Table 4.3 2019 KYTC Seasonal (Monthly) Factors for Urban Interstate	12
Table 4.4 2019 KYTC Daily (Day of Week) Factors for Urban Interstate.....	12
Table 4.5 Case Study with High and Low Monthly Factors and Daily Factors	12

Chapter 1 Introduction

Currently, the Kentucky Transportation Cabinet (KYTC) project development processes rely on *point* or *hard* estimates of data (e.g., safety forecasts and traffic counts). Uncertainty of those data is rarely if ever accounted for in planning and design. To facilitate improved and more flexible prioritization and performance-based design, the magnitude and impact of data uncertainty should be accounted for.

In this project, the magnitude and impact of the uncertainty of collected, estimated, and modeled data is estimated. We focused on two of the most important datasets used as inputs into KYTC project plans, programs, and decisions — safety estimates and traffic counts. We developed tools and procedures for estimating uncertainty in these datasets, and the results will be useful when using these data for project design and prioritization. While data uncertainty is expected to increase with timeframes for estimates (i.e., forecasts), there can be considerable uncertainty even in data collected and measured today.

This report begins with a review and summary of materials related to the use of safety and traffic data in KYTC decision making. Next, material from other state departments of transportation (DOTs) that address data uncertainty and decision making are discussed. Chapter 3 describes the uncertainty of Strategic Highway Investment Formula for Tomorrow (SHIFT) safety scoring, while Chapter 4 looks at the uncertainty in KYTC's traffic count process, focusing on monthly and daily factors derived from permanent automatic traffic recorder (ATR) data. Finally, Chapter 5 provides recommendations for future work.

Chapter 2 Literature Review

This chapter first reviews and summarizes materials related to the use of safety and traffic data in KYTC decision making. Next we look at other state practices that can be related to or impacted by uncertainty in the project planning and pre-design phases.

2.1 Kentucky

To understand the magnitude and impact of uncertainty in key Cabinet data sources and project development decisions, we reviewed the following documents:

- *KYTC Highway Design Guidance Manual* [1]
- *Data Driven Safety Analysis (DDSA) Implementation Plan* [2]
- Strategic Highway Investment Formula for Tomorrow (SHIFT) Documentation [3]
- Continuous Highway Analysis Framework (CHAF) Documentation [4]
- Highway Knowledge Portal [5]

2.1.1 KYTC Highway Design Guidance Manual

The *Highway Design Guidance Manual* provides detailed design information for road projects. In general, data uncertainty is not mentioned in the manual. But HD-704.4 (Variance Process), under the geometric design guidelines, contains the following statement: “Any deviation from the common geometric practices of items that are not part of the controlling criteria should be considered a variance and justified with any mitigation strategies in the Design Executive Summary (DES).” This statement implies variances could happen in the design process.

HD-202.3 (Project Data) provides details on data required in anticipation of the design phase. Data required include previous planning studies and projects, traffic data, crash data, mapping, right of way, preliminary budget, existing geotechnical information, utilities, agency coordination, and transportation modal considerations. But data uncertainty and how to account for it are not mentioned.

2.1.2 DDSA Implementation Plan

The DDSA methodologies from the *Highway Safety Manual* (HSM) are integrated into KYTC’s organizational processes. Implementation of DDSA at both network level and project level improve safety by reducing roadway crash frequency and severity. Both existing and newly developed safety tools have been utilized in the DDSA implementation plan, such as

- Safety performance functions (SPFs)
- Excess expected crashes (EEC)
- Level of service of safety (LOSS) for network screening
- Capacity Analysis for Planning of Junctions (CAP-X)
- Safety Performance for Intersection Control Evaluation (SPICE) and project-level safety diagnostic spreadsheet for safety diagnostics
- Crash Modification Factors (CMFs) Clearinghouse
- HSM Spreadsheets
- Enhanced Interchange Safety Analysis Tool (ISATe)
- Interactive Highway Safety Design Model (IHSDM) (for predicting safety performance)

Data uncertainty is addressed in the following statement: “The Division of Planning will engage the Office of Information Technology (OIT) to add EEC, confidence interval (a measure of the reliability of the EEC), and LOSS fields in Continuous Highway Analysis Framework (CHAF).”

2.1.3 SHIFT

SHIFT is a data-driven, objective approach to measure and compare capital improvement projects and prioritize transportation spending. The SHIFT formula has five components — Safety, Asset Management, Economic Growth, Congestion, and Benefit/Cost Ratio (B/C) — that are used score and prioritize projects being considered for inclusion in KYTC’s *Enacted Highway Plan*. Each of the five components uses different data sources and formulas to calculate scores, with safety receiving a large weight in the overall formula. All SHIFT scores are currently *point* or *hard* estimates (e.g., the crash history safety metric and the traffic congestion metric) and uncertainty is not explicitly considered.

2.1.4 CHAF User Guide

CHAF is an application that links all project-related systems together so users can collect, track and analyze identified projects. CHAF works as a tool to sponsor, score, and rank projects under SHIFT. It provides a platform to organize all project-related data and information. Uncertainty is not mentioned or quantified in CHAF.

2.1.5 Highway Knowledge Portal

The KYTC Highway Knowledge Portal provides details on time management for highway project development. Templates for each work activity include typical project contexts, and common project phases are provided to help project managers prepare effective project schedules. Neither variability nor uncertainty is mentioned.

2.2 Other State Practices

We also reviewed selected state DOT highway project development manuals and highway design manual, focusing on project planning and pre-design (scoping). We performed keyword searches using phrases such as *variability*, *variance*, *confidence interval*, and *reliability*. None of the documents include the impact of input data uncertainty on project selection and design. Table 2.1 lists documents reviewed from other states.

Table 2.1 State DOT Documents Reviewed

State	Last Year Updated	State DOTs Documents Reviewed
AL	2018	Guide for Developing Construction Plans
AK	2020	Alaska Highway Preconstruction Manual
AZ	Not found	Project Development Process Manual
AR	2020	Roadway Design Guidelines & Manuals
CA	2020	Project Development Procedures Manual
CO	2020	Project Development Manual
CT	2020	Digital Project Development Manual
DE	2015	Digital Project Development Manual
FL	2020	FDOT Design Manual
GA	2012	Project Management Handbook
IL	2017	Bureau of Design and Environment Manual
IN	2007	Project Development Process Manual
IA	2013	Project Development Process Manual

State	Last Year Updated	State DOTs Documents Reviewed
MA	2006	Project Development and Design Guide
MN	Not found	Highway Project Development Process
NE	2020	Roadway Design Manuals
NJ	Not found	Engineering
NM	Not found	Program Management
NY	2020	Project Development Manual
NC	2002	Roadway Design Manual
ND	Not found	Design Manual
OH	2018	ODOT Project Development Process
OR	2017	Project Delivery Guide
TX	2019	Project Development Process Manual
VA	2020	Traffic Engineering Design Manual
WA	2019	Design Manual
WI	2021	Facilities Development Manual
DC	2019	Design and Engineering Manual

Source: References [6-33].

Chapter 3 Uncertainty in SHIFT Safety Scoring

One of the most widely used safety metrics — EEC — is calculated as the difference between the estimate obtained from the Empirical Bayes (EB) technique and the crash count predicted by a SPF for similar facilities [36]. EEC alone was used as the crash-based safety metric in the 2020 iteration of SHIFT project prioritization. Projects were ranked from highest to lowest using only the EEC point estimates for all crashes, independent of severity.

In this project, we introduce the concept of uncertainty in the point estimates and investigate its effect on project rankings. A hypothetical example is shown in Figure 3.1, where 10 projects have been ranked based on a project-level EEC. The figure also shows the range of a project’s rank, the difference between its rank had its score been one standard deviation higher and one standard deviation lower than its point estimate. Computation of standard deviation for SHIFT safety scoring is discussed below.

Consider again the figure. The project ranked #4 could have been ranked as high as #2 or as low as #6 within some degree of uncertainty. Now consider the projects ranked #6 and #7. Both project’s scores are similar, but the range of rank is much wider for the project ranked #6. In this case, the project ranked #7 could be considered a more reliable project toward which safety resources should be dedicated.

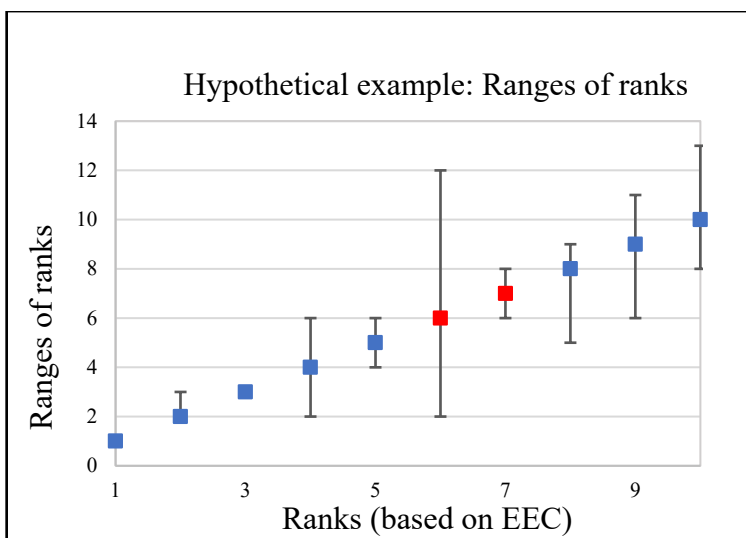


Figure 3.1 Hypothetical Example of Project Ranks with Ranges

SHIFT 2022 safety scoring uses more than just EEC, and computation of standard deviation for a project using the new scoring metric is more complex. A parallel project (SPR 21-603, *Incorporating Crash Severity and Continuous Improvement of SHIFT*) developed the new safety metric. The updated metric uses a combination of EB and EEC for both serious (KAB) and less serious (CO) crashes, weighting them according to the total value loss in each category. The revised process also introduces a goal-driven EEC_{alt} , as the difference between the EB estimate and 2/3 of the SPF value, as the goal of Kentucky’s *Strategic Highway Safety Plan* is to reduce fatalities by one-third by 2024. Equation 1 is used to compute the SHIFT 2022 crash data-based safety score:

$$S = 0.445 * EB_{(KAB)} + 0.445 * EEC_{alt(KAB)} + 0.055 * EB_{(CO)} + 0.055 * EEC_{alt(CO)} \quad \text{Eq. 1}$$

While the project made significant advances in the incorporation of severity as well as Cabinet safety goals by integrating them into the methodology, the resulting formula presented a significant challenge for developing confidence intervals for the safety score. The following section briefly describes the new scoring methodology. See the SPR 21-603 project report for additional details.

We now define standard deviation in the context of the SHIFT safety scoring metric. Like most safety metrics, EECs and EBs are point values, but both have uncertainty associated with them. While the HSM details how to compute uncertainty of the EB estimate for a homogeneous roadway element, computing uncertainty for EEC is less straightforward. The procedure for computing uncertainty is also complicated by the heterogeneous composition (e.g., roadway types, intersections, partial segments, ramps) of many SHIFT projects.

From the HSM and related publications, we know that the variance of EB-expected crashes is given by Equation 2 [15, 65]:

$$\text{VAR (EB)} = \sqrt{(1 - w) * EB} \quad \text{Eq. 2}$$

where w is a weight that depends on the amount of crash data we have and the reliability of the SPF model. The variance of SPF-predicted crashes is given by Equation 3:

$$\text{VAR (SPF)} = \text{SPF} + \frac{\text{SPF}^2}{\theta} \quad \text{Eq. 3}$$

where θ is a parameter produced by the fitting of the SPF model to statewide crash data.

Because EEC is computed as the difference between the EB-expected crashes and SPF-predicted crashes, if we assume statistical independence the variance of EEC is the sum of the variances of the two estimates (Equation 4).

$$\text{VAR (EEC)} = \text{Var (SPF)} + \text{Var (EB)} \quad \text{Eq. 4}$$

However, since we know that VAR (SPF) is very small compared to VAR (EB). for this project we can assume:

$$\text{VAR (EEC)} = \text{Var (N}_{EB}) = \sqrt{(1 - w) * EB} \quad \text{Eq. 5}$$

At the project level, the standard deviation can be calculated by taking the square root of the sum of the squared standard deviations of each entity (intersection or road segment) as shown in Equation 6.

$$\text{SD at Project Level} = \sqrt{\sum_{i=1}^n \text{SD}_i^2} \quad \text{Eq. 6}$$

Recalling that in SHIFT 2022, the safety ranking of a project is based on its score S (Equation 7),

$$S = 0.445 * N_{EB(KAB)} + 0.445 * EEC_{alt(KAB)} + 0.055 * N_{EB(CO)} + 0.055 * EEC_{alt(CO)} \quad \text{Eq. 7}$$

we can compute the project-level standard deviation of the final score (S) by combining the variances of the metrics with the ratios as shown in Equation 8.

$$SD_S = \sqrt{0.445^2 * SD_{(EB(KAB))}^2 + 0.445^2 * SD_{EEC_{alt}(KAB)}^2 + 0.055^2 * SD_{(EB(CO))}^2 + 0.055^2 * SD_{EEC_{alt}(CO)}^2} \quad \text{Eq. 8}$$

A project’s range of ranks can be determined by a range of safety scores as computed by Equation 9.

$$\text{Range of } S = S \pm SD_S \quad \text{Eq. 9}$$

Figures 3.2 and 3.3 illustrate the application of the above methodology to determine the range of crash data –based safety scores and ranks, respectively, for the top 50 projects in SHIFT 2022.

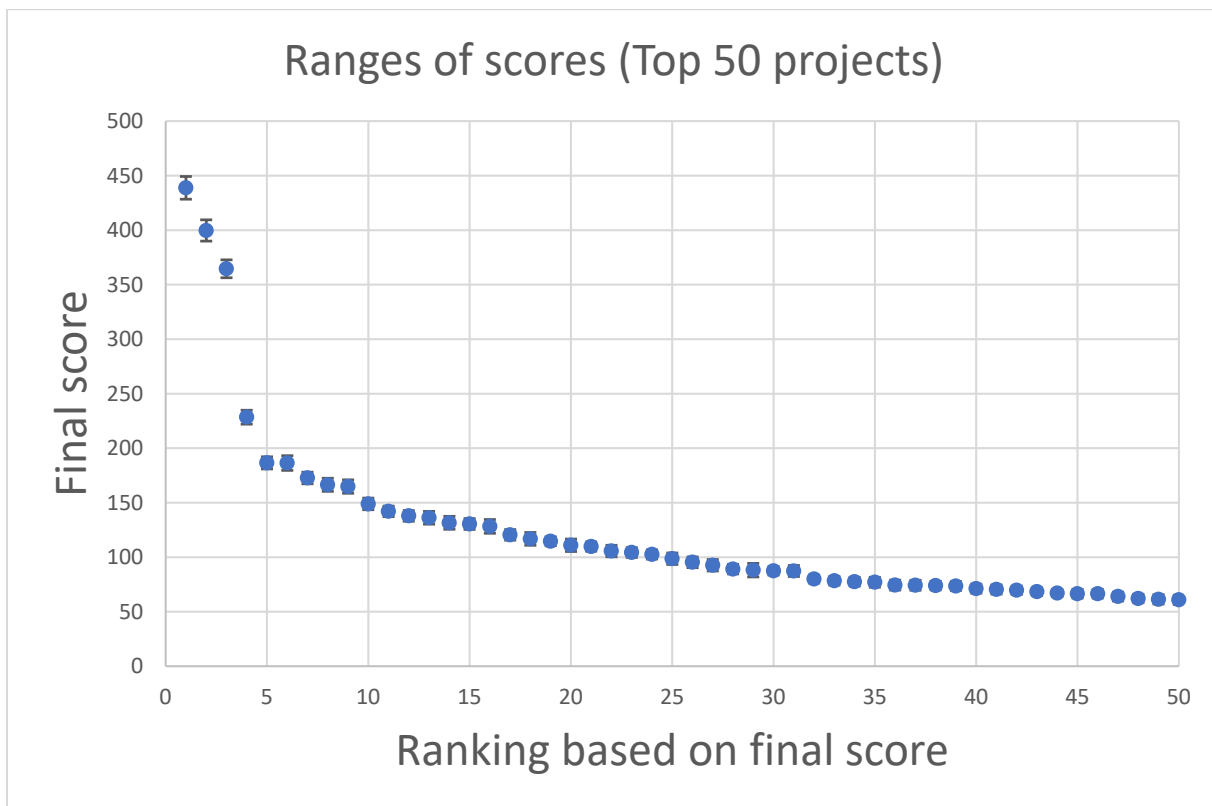


Figure 3.2 Ranges of Scores (SHIFT 2022 Top 50 Projects)

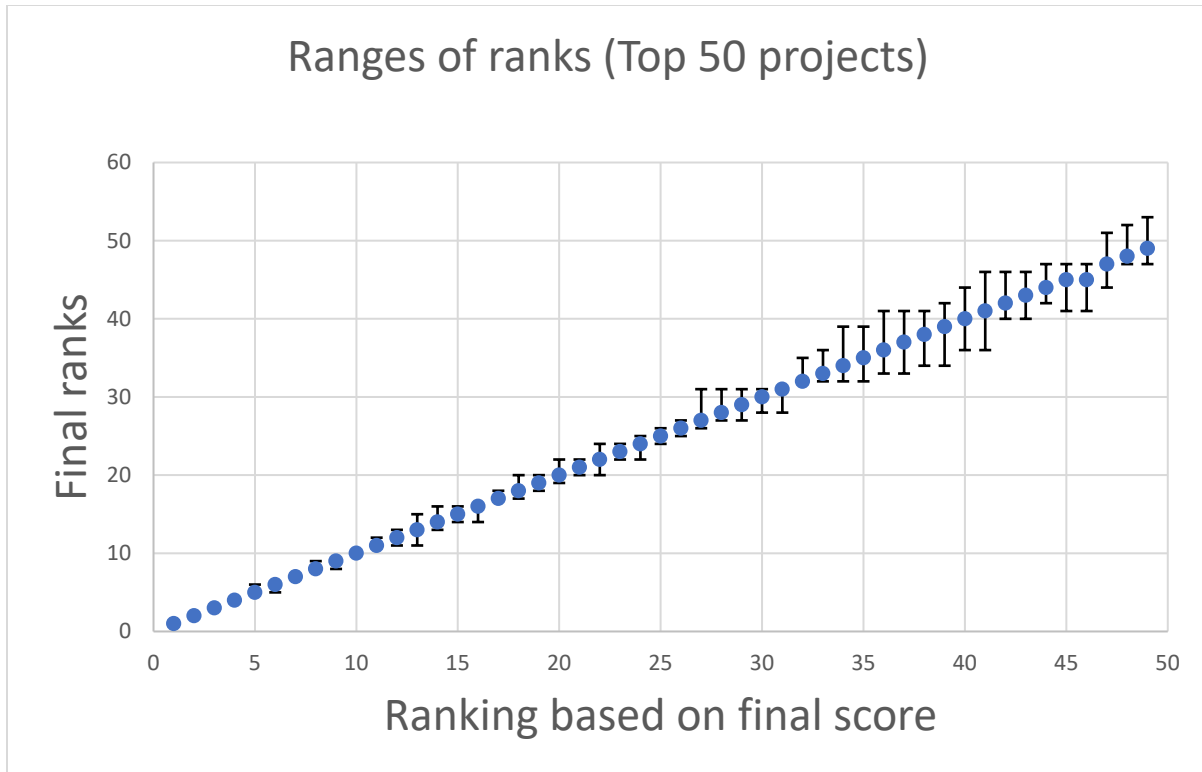


Figure 3.3 Ranges of Ranks (SHIFT 2022 Top 50 Projects)

For the highest ranked projects, differences in scores far exceed the variability of the scores (at plus or minus one standard deviation, or one sigma). However, as scores decrease for projects ranked lower, the curve flattens and variability then exceeds the differences in scores. This means that for lower scoring (and ranked) projects, safety is similar, and other considerations may be more significant than safety in SHIFT’s overall ratings. Data and resulting confidence intervals for the top-100 project SHIFT safety scores are presented in Appendix A.

Chapter 4 Uncertainty in Traffic Estimation

Traffic counts are used in many KYTC processes, including planning, design, and operations (traffic and safety). This chapter presents a method to develop confidence intervals around two-day count-estimated average annual daily traffic (AADT) values.

4.1 Data Sources

4.1.1 ATR Data

An ATR is a traffic counter that is placed at permanent locations to continuously record the distribution and variation in traffic flow by hour of the day, day, and/or month. There are 96 ATR stations across Kentucky to cover four FHWA groupings — Rural Interstate, Rural General, Urban General, Recreational (KYTC does not use this grouping, and Urban Interstate. An example of ATR data from one station for a year is shown in Table 4.1.

Table 4.1 Continuous Data Program: Automated Traffic Recorder (ATR) Data

Record Type	FIPS State Code	Functional Classification	Station Identification	Direction of Travel	Lane of Travel	Year of Data	Month of Data	Day of Data	Day of Week	Traffic Volume Counted, after 00:00 – to 01:00	Traffic Volume Counted, after 23:00 – to 24:00	Restrictions
3	21	11	008P63	1	1	19	1	1	3	186	184	0
3	21	11	008P63	1	2	19	1	1	3	246	249	0
3	21	11	008P63	1	3	19	1	1	3	165	245	0
3	21	11	008P63	1	4	19	1	1	3	24	63	0
3	21	11	008P63	5	1	19	1	1	3	363	190	0
3	21	11	008P63	5	2	19	1	1	3	220	217	0
3	21	11	008P63	5	3	19	1	1	3	173	182	0
3	21	11	008P63	5	4	19	1	1	3	32	59	0
3	21	11	008P63	1	1	19	1	2	4	130	231	0
3	21	11	008P63	1	2	19	1	2	4	215	366	0
.....												
3	21	11	008P63	1	3	19	10	12	7	368	469	0
3	21	11	008P63	1	4	19	10	12	7	134	133	0
3	21	11	008P63	5	1	19	10	12	7	257	449	0
3	21	11	008P63	5	2	19	10	12	7	237	340	0
3	21	11	008P63	5	3	19	10	12	7	210	402	0
3	21	11	008P63	5	4	19	10	12	7	74	208	0

4.1.2 Two-Day Count Data

Short-duration traffic volume counts are traditionally the primary focus of most statewide traffic monitoring. They provide most the geographic (spatial) diversity needed to generate traffic volume information on the state roadway system. KYTC’s short-duration traffic volume counts provide coverage count to meet transportation data needs and meet the HPMS reporting requirements. They also meet the needs of specific project or data collection efforts. An example of a 48-hour short duration count is shown in Table 4.2.

Table 4.2 Short Duration Data Program: Short-Term Hourly Volume

Kentucky Transportation Cabinet															
Short-term Hourly Traffic Volume for 10/14/201 through 10/16/2019															
Site names:	037A84					Seasonal Factor Grp:	3								
County:	Franklin					Daily Factor Grp:	3								
Funcn Class:	U Principal Arterial - Other					Axle Factor Grp:	14								
Location:	037-US-0127 -000 @ 5.700 From: KY 676 (EAST WEST)					Growth Factor Grp:	14								
	Sun, Oct 13, 2019			Mon, Oct 14, 2019			Tue, Oct 15, 2019			Wed, Oct 16, 2019			Thu, Oct 17, 2019		
	Road	Pos	Neg	Road	Pos	Neg	Road	Pos	Neg	Road	Pos	Neg	Road	Pos	
00:00							106	65	41	148	75	73			
01:00							90	53	37	75	35	40			
02:00							58	26	32	70	29	41			
03:00							50	23	27	68	33	35			
04:00							122	38	84	113	38	75			
05:00							334	159	175	326	151	175			
06:00							992	580	412	969	555	414			
07:00							1,955	1,088	867	1,887	1,071	816			
08:00							1,675	915	760	1,687	949	738			
09:00							1,485	718	767	1,428	719	709			
10:00							1,586	746	840	1,484	653	831			
11:00							2,034	889	1,145	1,990	906	1,084			
12:00				2,172	1,037	1,135	2,376	1,212	1,164						
13:00				1,804	882	922	2,055	1,020	1,035						
14:00				1,722	795	927	1,891	857	1,034						
15:00				1,977	825	1,152	2,171	888	1,283						
16:00				2,219	883	1,336	2,612	995	1,617						
17:00				2,007	879	1,128	2,115	909	1,206						
18:00				1,412	724	688	1,520	745	775						
19:00				1,145	611	534	1,238	646	592						
20:00				728	426	302	845	440	405						
21:00				459	276	183	556	340	216						
22:00				357	207	150	326	180	146						
23:00				197	109	88	229	134	95						
Total				16,199	7,654	8,545	28,421	13,666	14,755	10,245	5,214	5,031			
AM Peak Vol							2,086	1,203	1,145	2,022	1,173	1,084			
AM Peak Fct							.82	.906	.873	.872	.85	.889			
AM Peak Hr							7: 15	7: 15	11: 00	7: 15	7: 15	11: 00			
PM Peak Vol				2,282	1,037	1,385	2,612	1,212	1,617						
PM Peak Fct				.925	.926	.897	.865	.974	.871						
PM Peak Hr				16: 15	12: 00	16: 15	16: 00	12: 00	16: 00						
Seasonal Fct				.977	.977	.977	.977	.977	.977	.977	.977	.977			
Daily Fct				.988	.988	.988	.947	.947	.955	.955	.955	.955			
Axle Fct				.481	.481	.481	.481	.481	.481	.481	.481	.481			
Pulse Fct				2.000	2.000	2.000	2.000	2.000	2.000	2.000	2.000	2.000			
Created	01/19/2021	4:25 PM					ROAD AADT	24,769	NDIR AADT	12,793	PDIR AADT				

4.2 Methodology

Short-duration volume counts usually require a number of adjustments to convert a daily traffic volume raw count into an estimate of AADT. If short-duration counts are used to estimate AADT, these counts require adjustments to reduce the effects of temporal bias. In general, a 48-hour axle count is converted to AADT with Equation 10.

$$AADT_{hi} = VOL_{hi} \times M_h \times D_h \times A_i \times G_h \tag{Eq. 10}$$

where:

AADT_{hi} = the annual average daily travel at location *i* of factor group *h*

VOL_{hi} = the 48-hour axle volume at location *i* of factor group *h*

M_h = the applicable seasonal (monthly) factor for factor group *h*

D_h = the applicable Day of Week (daily) factor for factor group *h* (if needed)

A_i = the applicable axle-correction factor for location *i* (if needed)

G_h = the applicable growth factor for factor group *h* (if needed)

The monthly factor is used to correct for month-of-year bias in short-duration counts. And day of week factor is used to correct for bias based on day of the week. When ATR data are available, monthly average daily traffic and monthly average daily traffic can be calculated using the equations below.

Monthly Average Daily Traffic (MADT):

$$MADT_m = \frac{\sum_{j=1}^7 w_{jm} \sum_{h=1}^{24} \left[\frac{1}{n_{hjm}} \sum_{i=1}^{n_{hjm}} VOL_{ihjm} \right]}{\sum_{j=1}^7 w_{jm}} \quad \text{Eq. 11}$$

where:

$MADT_m$ = monthly average daily traffic for month m

VOL_{ihjm} = total traffic volume for i th occurrence of the h th hour of day within j th day of week during the m th month
 i = occurrence of a particular hour of day within a particular day of the week in a particular month ($i=1, \dots, n_{hjm}$) for which traffic volume is available

h = hour of the day ($h=1, 2, \dots, 24$) – or other temporal interval

j = day of the week ($j=1, 2, \dots, 7$)

m = month ($m=1, \dots, 12$)

n_{hjm} = the number of times the h th hour of day within the j th day of week during the m th month has available traffic volume (n_{hjm} ranges from 1 to 5 depending on hour of day, day of week, month, and data availability)

w_{jm} = the weighting for the number of times the j th day of week occurs during the m th month (either 4 or 5); the sum of the weights in the denominator is the number of calendar days in the month (i.e., 28, 29, 30, or 31)

Average Daily Traffic (ADT)

$$ADT = \frac{1}{n} \sum_{i=1}^n VOL_i \quad \text{Eq. 12}$$

where:

VOL_i = daily volume in the i th day and

N = the number of whole days.

Monthly and daily factors are calculated using Equations 13 and 14.

$$M = \frac{AADT}{MADT} \quad \text{Eq. 13}$$

$$D = \frac{AADT}{ADT} \quad \text{Eq. 14}$$

ATR data for the same FHWA grouping can be used to calculate confidence intervals for monthly and daily factors. For example, the 2019 KYTC Seasonal (Monthly) and Daily Factors for Urban Interstate are shown in Tables 4.3 and 4.4, with both the high and low values for a 95% confidence interval. Data and resulting confidence intervals for other road types are presented in Appendix B.

Table 4.3 2019 KYTC Seasonal (Monthly) Factors for Urban Interstate

Kentucky Transportation Cabinet Seasonal Factors for 2019												
	Jan (N Sites)	Feb (N Sites)	Mar (N Sites)	Apr (N Sites)	May (N Sites)	Jun (N Sites)	Jul (N Sites)	Aug (N Sites)	Sep (N Sites)	Oct (N Sites)	Nov (N Sites)	Dec (N Sites)
	1.169 (7)	1.071	0.989 (7)	0.984 (7)	0.969 (7)	0.950 (8)	0.956 (8)	0.964 (8)	0.983 (7)	0.968 (7)	1.024 (6)	1.023
008P63	1.200				0.950	0.930	0.921	1.005	1.004	0.945		
019P96	1.131	1.031	1.004	0.969	0.967	0.956	0.974	0.964	0.979	0.983	1.032	1.036
019P97	1.161	1.048	1.012	0.966	0.959	0.958	0.982	0.948				
047P68	1.247	1.167	0.973	0.992		0.907	0.884	0.939	0.995	0.959	1.025	1.018
056P94	1.105	1.019	0.988	0.982	0.969	0.975	1.003	0.967	0.971	0.974	1.028	1.036
056P98		1.059	1.012	0.978	0.973	0.972	0.999	0.969	0.968	0.974	1.011	1.019
059P93	1.127	1.050	0.971	0.993	0.979	0.960	0.966	0.973	0.983	0.987	1.021	1.012
114P67	1.216	1.125	0.964	1.007	0.983	0.944	0.915	0.944	0.980	0.954	1.025	1.016
M Factor	1.169	1.071	0.989	0.984	0.969	0.950	0.956	0.964	0.983	0.968	1.024	1.023
SD	0.053	0.054	0.020	0.015	0.011	0.023	0.044	0.021	0.013	0.016	0.007	0.010
DF	6	6	6	6	6	7	7	7	6	6	5	5
t-value at 95%	2.447	2.447	2.447	2.447	2.447	2.365	2.365	2.365	2.447	2.447	2.571	2.571
CI	0.049	0.050	0.019	0.013	0.011	0.019	0.036	0.018	0.012	0.014	0.008	0.011
M Factor High	1.218	1.121	1.008	0.997	0.980	0.969	0.992	0.982	0.995	0.982	1.032	1.034
M Factor Low	1.120	1.021	0.970	0.971	0.958	0.931	0.920	0.946	0.971	0.954	1.016	1.012

Table 4.4 2019 KYTC Daily (Day of Week) Factors for Urban Interstate

		JAN	FEB	MAR	APR	MAY	JUN	JUL	AUG	SEP	OCT	NOV	DEC
CI	Sunday	0.174	0.164	0.165	0.158	0.103	0.162	0.170	0.149	0.135	0.148	0.125	0.150
	Monday	0.038	0.029	0.075	0.045	0.012	0.046	0.057	0.052	0.008	0.047	0.056	0.039
	Tuesday	0.020	0.039	0.077	0.063	0.052	0.070	0.077	0.063	0.059	0.063	0.039	0.066
	Wednesday	0.033	0.033	0.059	0.055	0.039	0.043	0.051	0.053	0.050	0.051	0.012	0.055
	Thursday	0.023	0.018	0.023	0.022	0.016	0.030	0.020	0.028	0.021	0.029	0.025	0.019
	Friday	0.014	0.015	0.036	0.023	0.019	0.025	0.011	0.024	0.015	0.028	0.018	0.011
	Saturday	0.071	0.043	0.088	0.066	0.041	0.066	0.079	0.066	0.022	0.052	0.050	0.050
D Factor High	Sunday	1.629	1.539	1.483	1.429	1.373	1.393	1.338	1.358	1.340	1.345	1.360	1.344
D Factor Low	Sunday	1.281	1.211	1.153	1.113	1.167	1.069	0.998	1.060	1.070	1.049	1.110	1.044
D Factor High	Monday	1.001	1.014	1.095	1.034	1.054	1.058	1.061	1.071	1.040	1.073	1.046	1.029
D Factor Low	Monday	0.925	0.956	0.945	0.944	1.030	0.966	0.947	0.967	1.024	0.979	0.934	0.951
D Factor High	Tuesday	0.985	0.989	1.067	1.040	1.019	1.074	1.069	1.076	1.057	1.063	0.995	1.096
D Factor Low	Tuesday	0.943	0.908	0.907	0.908	0.910	0.928	0.909	0.945	0.934	0.932	0.913	0.959
D Factor High	Wednesday	0.972	0.972	1.017	1.010	0.991	1.018	0.996	1.033	1.023	1.035	0.924	1.100
D Factor Low	Wednesday	0.906	0.906	0.899	0.900	0.913	0.932	0.894	0.927	0.923	0.933	0.900	0.990
D Factor High	Thursday	0.909	0.924	0.956	0.945	0.933	0.963	1.017	0.953	0.955	0.963	1.015	0.943
D Factor Low	Thursday	0.863	0.888	0.910	0.901	0.901	0.903	0.977	0.897	0.913	0.905	0.965	0.905
D Factor High	Friday	0.833	0.884	0.888	0.906	0.881	0.892	0.909	0.886	0.882	0.891	0.913	0.875
D Factor Low	Friday	0.805	0.854	0.816	0.860	0.843	0.842	0.887	0.838	0.852	0.835	0.877	0.853
D Factor High	Saturday	1.314	1.199	1.178	1.200	1.152	1.157	1.165	1.166	1.104	1.147	1.174	1.097
D Factor Low	Saturday	1.172	1.113	1.002	1.068	1.070	1.025	1.007	1.034	1.060	1.043	1.074	0.997

Traffic estimates are key to many Cabinet planning and design decisions. Confidence intervals calculated in this project can be applied to any traffic estimate used in project development. To give an example of the confidence one might have in using KYTC traffic count-based estimates, four examples— one for each FHWA highway grouping — are provided in Table 4.5. The calculations are made with Equation 10 using corresponding monthly and daily factors from Table B1 to B8 in Appendix B. For these examples, the confidence intervals range from four to eighteen percent of the AADT point estimate values.

Table 4.5 Case Study with High and Low Monthly Factors and Daily Factors

	Rural Interstate	Rural General	Urban General	Urban Interstate
Date	4/9/2019	8/28/2019	6/25/2019	5/6/2019

	Rural Interstate	Rural General	Urban General	Urban Interstate
Day	Tuesday	Wednesday	Tuesday	Monday
Volume (example)	31,750	5,327	6,373	29,292
M Factor	0.975	0.942	0.986	0.969
M Factor High	1.009	0.957	1.003	0.980
M Factor Low	0.941	0.927	0.969	0.958
D Factor	1.076	0.991	0.955	1.042
D Factor High	1.139	1.015	0.990	1.054
D Factor Low	1.023	0.967	0.940	1.030
A Factor (assumed)	1.000	1.000	1.000	1.000
G Factor	1.000	1.000	1.000	1.000
AADT	33,309	4,973	6,001	29,576
AADT High	36,503	5,175	6,326	30,239
AADT Low	30,561	4,775	5,808	28,921
AADT confidence interval	5,942	400	518	1,318
AADT confidence interval (percent)	18%	8%	9%	4%

Chapter 5 Conclusions And Future Work

5.1 Conclusions

The objectives of this study were to 1) better understand the magnitude of uncertainty in key Cabinet data sources, 2) better understand the impact of data uncertainty on KYTC project development decisions, and 3) develop procedures for using new knowledge of data uncertainty in the project development process.

Much progress was made on the first objective. The project investigated the uncertainty in two key KYTC data areas — safety ratings and traffic counts. Results provide Cabinet engineers a first look at the uncertainty in data they use to conduct many important design and operations activities.

The effect of uncertainty in safety data was explored in the context of the new SHIFT crash data-based ranking metric, and results indicate that the Cabinet may rely on current approaches to reliably contribute to the overall project prioritization.

Likewise, the Cabinet has an excellent traffic counting program that produces reliable traffic estimations for the state system. Unfortunately, no system is yet in place to produce reliable traffic estimates for many non-state-maintained roads.

Additional work is needed to understand the effect of data uncertainty on project development decisions beyond the planning and programming stage.

5.2 Future Work

A follow-on project will address some of these issues in the context of continuous improvement of SHIFT methods. It will investigate complexities in data uncertainty as applied (both mathematical and programmatic/policy) for planning and design decisions. The new project will consider uncertainty in traffic, safety, and planning data when revising SHIFT and project development procedures. For example, we will explore the full range of traffic count data uncertainty for combinations of variability in road class, volume range, daily factors, and monthly factors. We will also consider potential variability in axle and growth factors used to forecast AADT for design years.

Error propagation (multiplication) and cancellation throughout the data development and use life cycle will also be investigated. Recommendations will be made to data stewards and processors to reduce variability and ensure that variability is transparent and can be considered when designing projects.

References

1. KYTC, Highway Design Guidance Manual, 2020, <https://transportation.ky.gov/Organizational-Resources/Policy%20Manuals%20Library/Highway%20Design.pdf>
2. KYTC, DDSA Implementation Plan, 2020, <https://business.kytc.ky.gov/work/DDSA/Pages/default.aspx>
3. KYTC, SHIFT: Prioritizing Kentucky's Transportation Dollars, <https://transportation.ky.gov/SHIFT/Pages/default.aspx>
4. KYTC, Continuous Highway Analysis Framework (CHAF) User Guide Version 2.0. 2018, <https://transportation.ky.gov/Planning/CHAF/2018%20CHAF%20User%20Guide%20v2.pdf>
5. KYTC, Highway Knowledge Portal, <https://transportation.ky.gov/Highway-Design/Conference%20Presentation/Highway%20Knowledge%20Portal.pdf>
6. Alabama DOT, Guide for Developing Construction Plans, 2018, <https://www.dot.state.al.us/publications/Design/pdf/DevelopingConstructionPlans.pdf>
7. Alaska DOT, Alaska Highway Preconstruction Manual, 2020, http://www.dot.state.ak.us/stwddes/dcsprecon/assets/pdf/preconhwy/preconstruction_all.pdf
8. Arizona DOT, Project Development Process Manual, <https://azdot.gov/business/project-management-services/project-resource-office/project-development-process-manual>
9. Arkansas DOT, Roadway Design Guidelines & Manuals, 2020, <https://www.ardot.gov/divisions/roadway-design/guidelines-manuals/>
10. California DOT, Project Development Procedures Manual, 2020, <https://dot.ca.gov/programs/design/manual-project-development-procedures-manual-pdpm>
11. Colorado DOT, Project Development Manual, 2020, https://www.codot.gov/business/designsupport/bulletins_manuals/2013-project-development-manual/revs-to-project-manual
12. Connecticut DOT, Digital Project Development Manual, 2020, <https://portal.ct.gov/DOT/Engineering-Applications/Digital-Project-Development-Manual>
13. Delaware DOT, Digital Project Development Manual, 2015, https://deldot.gov/Publications/reports/CTP/pdfs/project_development_manual.pdf
14. Florida DOT, FDOT Design Manual, 2020, <https://www.fdot.gov/roadway/fdm/default.shtm>
15. Georgia DOT, Project Management Handbook, 2012, <https://www.dot.ga.gov/PartnerSmart/Business/Documents/ProjectMgmt/PMHandbook.pdf>
16. Illinois DOT, Bureau of Design and Environment Manual , 2017, <https://idot.illinois.gov/Assets/uploads/files/Doing-Business/Manuals-Guides-&-Handbooks/Highways/Design-and-Environment/Design%20and%20Environment%20Manual,%20Bureau%20of.pdf>
17. Indiana DOT, Project Development Process Manual, 2007, <https://www.in.gov/indot/files/ProjectDevelopmentProcessManual.pdf>
18. Iowa DOT, Project Development Process Manual, 2013, <https://iowadot.gov/bridge/iowaDOTProjectDevelopmentProcessManualCompiled.pdf>
19. Massachusetts DOT, Project Development and Design Guide, 2006, <https://www.mass.gov/doc/2006-project-development-and-design-guide/download>
20. Minnesota DOT, Highway Project Development Process, <https://www.dot.state.mn.us/planning/hpdp/resources.html>
21. Nebraska DOT, Roadway Design Manuals, 2020, <https://dot.nebraska.gov/business-center/design-consultant/rd-manuals/>
22. New Jersey DOT, Engineering, <https://www.state.nj.us/transportation/eng/>

23. New Mexico DOT, Program Management, https://dot.state.nm.us/content/nmdot/en/Program_Management.html#
24. New York DOT, Project Development Manual, 2020, <https://www.dot.ny.gov/divisions/engineering/design/dqab/pdm>
25. North Carolina DOT, Roadway Design Manual, 2002, <https://connect.ncdot.gov/projects/Roadway/Pages/Roadway-Design-Manual.aspx>
26. North Dakota DOT, Design Manual, <https://www.dot.nd.gov/manuals/design/designmanual/designmanual.htm>
27. Ohio DOT, ODOT Project Development Process, 2018, https://www.transportation.ohio.gov/wps/wcm/connect/gov/8e8a50c1-ddd8-46c7-96bb-6b006b62cc5a/PDP-Manual.pdf?MOD=AJPERES&CONVERT_TO=url&CACHEID=ROOTWORKSPACE.Z18_M1HGGIK0N0JO00QO9DDD DM3000-8e8a50c1-ddd8-46c7-96bb-6b006b62cc5a-ne1UEga
28. Oregon DOT, Project Delivery Guide, 2017, <https://www.oregon.gov/odot/ProjectDel/Pages/Project-Delivery-Guide.aspx>
29. Texas DOT, Project Development Process Manual, 2019, <http://onlinemanuals.txdot.gov/txdotmanuals/pdp/index.htm>
30. Virginia DOT, Traffic Engineering Design Manual, 2020, <http://www.virginiadot.org/business/locdes/traffic-engineering-manual.asp>
31. Washington DOT, Design Manual, 2019, <https://wsdot.wa.gov/Publications/Manuals/M22-01.htm>
32. Wisconsin DOT, Facilities Development Manual, 2021, <https://wisconsindot.gov/Pages/doing-bus/eng-consultants/cnslt-rsrcs/rdwy/fdm.aspx>
33. Washington, D.C. DOT, Design and Engineering Manual, 2019, https://ddot.dc.gov/sites/default/files/dc/sites/ddot/page_content/attachments/DEM-2019-01-01_DDOT_DEM_Updates_FINAL.PDF
34. R. Srinivasan and K. Bauer, "Safety Performance Function Development Guide: Developing Jurisdiction-Specific SPFs," Federal Highway Administration Office of Safety, Final Report FHWA-SA-14-005, Sep. 2013.
35. A. Montella, "A comparative analysis of hotspot identification methods," *Accid. Anal. Prev.*, vol. 42, no. 2, pp. 571–581, Mar. 2010, doi: 10.1016/j.aap.2009.09.025.
36. E. Hauer, "Empirical bayes approach to the estimation of 'unsafety': The multivariate regression method," *Accid. Anal. Prev.*, vol. 24, no. 5, pp. 457–477, Oct. 1992, doi: 10.1016/0001-4575(92)90056-O.

Appendix A Shift Safety Score Ranking (Top 100)

Table A-1 SHIFT Safety Score Ranking

Sponsored ID	RT Unique	Final Score	SD Project	Score+SD	Score - SD	Rank	Rank High	Rank Low
IP20210151	056-KY-0061 -000	438.80	10.41	449.21	428.39	1	1	1
IP20160018	056-KY-0061 -000	399.71	9.79	409.50	389.93	2	2	2
IP20210150	056-US-0031E -000	364.56	8.18	372.75	356.38	3	3	3
IP20210153	056-US-0031E -000	228.45	6.34	234.79	222.11	4	4	4
IP20000087	018-US-0641 -000	186.58	5.57	192.15	181.02	5	5	6
04-154.30	047-US-0031W -000	186.43	6.76	193.19	179.66	6	5	6
IP20080211	056-KY-1065 -000	172.69	5.37	178.06	167.32	7	7	7
IP20080209	056-KY-0907 -000	166.43	6.08	172.51	160.35	8	8	9
05-150.01	015-KY-0044 -000	164.82	6.11	170.93	158.71	9	8	9
IP20070134	114-US-0031W -000	148.88	5.31	154.19	143.56	10	10	10
02-8300.00	030-KY-0054 -000	142.05	4.82	146.86	137.23	11	11	12
05-555.00	056-KY-1747 -000	137.92	4.95	142.87	132.97	12	11	13
11-8515.00	063-US-0025 -000	136.26	5.87	142.13	130.40	13	11	15
IP20000036	034-US-0060 -000	131.55	5.95	137.50	125.60	14	13	16
07-438.00	034-KY-0004 -000	130.49	5.04	135.53	125.45	15	14	16
07-430.00	057-US-0027 -000	128.31	6.28	134.59	122.03	16	14	16
IP20080167	037-US-0060 -000	120.48	4.90	125.38	115.59	17	17	18
11-80111.00	061-US-0025 -000	116.76	5.87	122.63	110.88	18	17	20
02-8300.10	030-KY-0054 -000	114.67	4.09	118.76	110.57	19	18	20
05-478.30	056-US-0031W -000	110.93	5.74	116.67	105.19	20	19	22
11-187.00	063-KY-0192 -000	109.79	4.27	114.06	105.52	21	20	22
05-323.01	056-KY-1931 -000	105.67	5.29	110.97	100.38	22	20	24
06-446.00	008-US-0042 -000	104.29	4.53	108.82	99.75	23	22	24
IP20210162	114-US-0231 -000	102.51	4.23	106.74	98.28	24	22	25
IP20190164	034-CS-4524 -000	98.65	5.29	103.94	93.36	25	24	26
IP20000034	034-US-0060 -000	95.32	4.89	100.21	90.43	26	25	27
IP20140060	034-KY-1974 -000	92.64	5.27	97.91	87.38	27	26	31
06-447.00	008-US-0025 -000	89.06	4.40	93.45	84.66	28	27	31
IP20080193	056-US-0031W -000	88.15	6.22	94.37	81.93	29	27	31
03-8857.00	114-US-0031W -000	87.52	3.91	91.42	83.61	30	28	31
IP20000053	034-CS-4524 -000	87.39	5.09	92.48	82.29	31	28	31
IP20190007	114-US-0231 -000	79.94	3.70	83.64	76.24	32	32	35
IP20080169	037-US-0127 -000	78.33	3.95	82.28	74.37	33	32	36
IP20080205	056-KY-0864 -000	77.49	4.04	81.54	73.45	34	32	39
IP20000037	034-US-0068 -000	77.03	4.50	81.53	72.53	35	32	39
IP20210149	056-CS-1046A -000	74.39	4.49	78.88	69.90	36	33	41
IP20210154	056-KY-1865 -000	74.26	4.50	78.76	69.76	37	33	41

Sponsored ID	RT Unique	Final Score	SD Project	Score+SD	Score - SD	Rank	Rank High	Rank Low
IP20130099	034-US-0027 -000	73.90	3.93	77.84	69.97	38	34	41
IP20190163	034-CS-4524 -000	73.54	4.03	77.57	69.52	39	34	42
11-185.00	063-US-0025E -000	71.20	4.15	75.35	67.06	40	36	44
07-252.00	034-KY-0922 -000	70.37	4.19	74.56	66.18	41	36	46
IP20080221	056-KY-1931 -000	69.69	3.84	73.52	65.85	42	40	46
11-147.00	063-US-0025 -000	68.34	3.51	71.86	64.83	43	40	46
IP20130129	015-KY-0044 -000	67.08	3.18	70.26	63.91	44	42	47
03-8904.10	114-US-0031W -000	66.43	3.99	70.42	62.44	45	41	47
IP20060202	114-US-0031W -000	66.43	3.99	70.42	62.44	45	41	47
IP20000050	034-CS-3016 -000	63.92	3.98	67.90	59.94	47	44	51
IP20190135	056-KY-1065 -000	62.11	3.86	65.97	58.25	48	47	52
IP20200066	034-US-0060 -000	61.34	4.27	65.61	57.06	49	47	53
06-80104.00	059-KY-0017 -000	60.89	4.23	65.11	56.66	50	47	54
IP20190064	008-KY-0018 -000	60.58	3.59	64.18	56.99	51	47	53
IP20000052	034-CS-4524 -000	58.54	3.96	62.50	54.58	52	48	55
05-344.01	056-KY-1747 -000	58.18	3.70	61.88	54.49	53	49	56
IP20210021	011-US-0127 -000	56.67	3.29	59.96	53.39	54	52	59
IP20130134	056-KY-2049 -000	55.81	2.95	58.76	52.86	55	52	59
IP20080212	056-KY-1065 -000	54.58	3.41	57.99	51.17	56	54	59
IP20170092	056-CS-1001F -000	54.19	3.07	57.26	51.12	57	54	59
IP20080208	056-KY-0907 -000	54.14	3.30	57.44	50.84	58	54	59
IP20000044	034-KY-1974 -000	53.63	3.66	57.29	49.97	59	54	61
05-80001.00	056-US-0060 -000	50.78	3.14	53.92	47.64	60	59	62
IP20150089	114-US-0031W -000	50.63	3.47	54.10	47.16	61	59	63
07-80102.00	105-KY-2906 -000	49.87	3.08	52.95	46.79	62	60	63
03-8819.00	005-KY-0090 -000	47.57	3.17	50.74	44.40	63	61	72
IP20170085	059-KY-0008 -000	46.65	3.10	49.76	43.55	64	63	73
IP20210008	034-US-0060 -000	46.36	3.67	50.03	42.69	65	62	73
03-8819.20	005-KY-0090 -000	46.06	2.93	48.99	43.12	66	63	73
IP20080213	056-KY-1065 -000	45.70	3.01	48.71	42.69	67	63	73
IP20160295	022-KY-0001 -000	45.53	2.47	48.00	43.05	68	63	73
IP20110203	114-US-0031W -000	45.47	3.55	49.02	41.93	69	63	74
06-450.00	059-KY-1303 -000	45.34	2.82	48.16	42.52	70	63	74
05-8958.00	106-KY-0055X -000	44.80	2.79	47.59	42.01	71	63	74
05-80103.00	015-KY-0044 -000	44.56	3.15	47.71	41.42	72	63	75
IP20210103	063-US-0025 -000	43.79	3.72	47.51	40.08	73	64	79
IP20160093	034-US-0060 -000	42.68	4.14	46.82	38.55	74	64	84
IP20210074	063-KY-0229 -000	41.43	2.91	44.34	38.52	75	73	84
07-196.20	040-US-0027 -000	41.16	2.49	43.65	38.68	76	74	84
IP20080201	056-KY-0155 -000	41.00	3.25	44.25	37.75	77	73	85

Sponsored ID	RT Unique	Final Score	SD Project	Score+SD	Score - SD	Rank	Rank High	Rank Low
07-414.00	057-KY-1980 -000	40.91	3.13	44.05	37.78	78	73	85
05-559.00	056-I -0065 -000	40.47	3.67	44.15	36.80	79	73	88
07-8902.00	034-KY-1927 -000	40.07	3.25	43.31	36.82	80	74	88
IP20150269		39.24	1.87	41.11	37.37	81	77	86
IP20080210	056-KY-1065 -000	38.85	2.81	41.66	36.04	82	75	91
IP20080271	008-US-0042 -000	38.76	2.83	41.59	35.92	83	75	91
11-8851.00	063-KY-0080 -000	38.69	2.72	41.41	35.97	84	76	91
08-156.00	104-US-0127 -000	38.15	2.65	40.81	35.50	85	79	93
02-8305.00	054-US-0041 -000	37.74	2.09	39.82	35.65	86	81	93
IP20150057	087-KY-0011 -000	37.36	2.68	40.04	34.69	87	81	97
IP20170069	056-CS-1477F -000	37.31	2.62	39.93	34.69	88	81	97
IP20080329	041-US-0025 -000	36.33	2.37	38.70	33.97	89	84	99
IP20190156		36.32	1.16	37.48	35.15	90	87	97
IP20080240	056-CR-1001G -000	36.11	3.06	39.17	33.05	91	82	104
IP20170077	034-CS-2418 -000	35.70	2.82	38.52	32.88	92	85	105
IP20080419	025-US-0060 -000	35.67	2.06	37.73	33.60	93	87	101
IP20080654	058-KY-0321 -000	35.46	2.29	37.75	33.17	94	86	103
11-167.00	007-KY-0074 -000	35.44	2.62	38.05	32.82	95	86	107
IP20060079	024-US-0068 -000	35.37	2.50	37.87	32.88	96	86	105
06-8901.00		35.18	2.10	37.28	33.09	97	89	104
05-150.50	015-KY-0044 -000	34.55	2.60	37.15	31.95	98	89	110
05-557.00	056-I -0071 -000	34.08	3.86	37.94	30.21	99	86	119
04-164.00	115-KY-0555 -000	33.67	2.91	36.58	30.75	100	89	114

Appendix B Traffic Count Monthly Factor And Daily Factor Tables

Table B-1 KYTC 2019 Seasonal (Monthly) Factors for Rural Interstate

	Jan (N Sites)	Feb (N Sites)	Mar (N Sites)	Apr (N Sites)	May (N Sites)	Jun (N Sites)	Jul (N Sites)	Aug (N Sites)	Sep (N Sites)	Oct (N Sites)	Nov (N Sites)	Dec (N Sites)
Station	1.231 (7)	1.178 (7)	0.991 (7)	0.975 (6)	0.949 (6)	0.903 (6)	0.887 (5)	0.950 (4)	0.983 (5)	0.945 (5)	1.001 (5)	1.012 (6)
022P47	1.257	1.173	1.054	0.988	0.938	0.914	0.900		0.934	0.926	1.003	1.029
041P23	1.231	1.144	0.951	0.916	0.918	0.898						0.966
052P48	1.033	1.075	0.973						1.000	0.939	0.961	1.033
072P51	1.270	1.237	1.014	1.008	0.937	0.881	0.862	0.940	1.005	0.976	1.017	1.004
106P22	1.245	1.134	1.020	0.990	0.965	0.948	0.947	0.930	0.955	0.921	0.992	1.041
107P91	1.221	1.164	0.957	0.988	0.968	0.912	0.893	0.969	1.021	0.966	1.033	1.000
118P83	1.360	1.319	0.967	0.961	0.965	0.867	0.833	0.960				
M Factor	1.231	1.178	0.991	0.975	0.949	0.903	0.887	0.950	0.983	0.945	1.001	1.012
SD	0.099	0.079	0.039	0.033	0.020	0.028	0.043	0.018	0.037	0.024	0.027	0.028
DF	6	6	6	5	5	5	4	3	4	4	4	5
t-value at 95%	2.447	2.447	2.447	2.571	2.571	2.571	2.776	3.182	2.776	2.776	2.776	2.571
CI	0.091	0.073	0.036	0.034	0.021	0.030	0.053	0.028	0.046	0.030	0.034	0.029
M Factor High	1.322	1.251	1.027	1.009	0.970	0.933	0.940	0.978	1.029	0.975	1.035	1.041
M Factor Low	1.140	1.105	0.955	0.941	0.928	0.873	0.834	0.922	0.937	0.915	0.967	0.983

Table B-2 KYTC 2019 Seasonal (Monthly) Factors for Rural General

	Jan (N Sites)	Feb (N Sites)	Mar (N Sites)	Apr (N Sites)	May (N Sites)	Jun (N Sites)	Jul (N Sites)	Aug (N Sites)	Sep (N Sites)	Oct (N Sites)	Nov (N Sites)	Dec (N Sites)
Station	1.199 (38)	1.095 (41)	1.030 (38)	0.964 (38)	0.931 (38)	0.950 (37)	0.947 (40)	0.942 (40)	0.944 (39)	0.987 (39)	1.053 (39)	1.089 (39)
001P34	1.140	1.060	1.005	0.970	0.939	0.954	0.980	0.947	0.961	0.997		1.087
007P31	1.157	1.053	0.976	0.958	0.932		0.926				1.027	1.066
009P26	1.138	1.048	1.006	0.960	0.948	0.953		0.965	0.971	0.980	1.025	1.037
010P42	1.187	1.077	1.024	0.976	0.956	0.980	0.964	0.939	0.949	0.945	1.013	1.040
013I02	1.375	1.329	1.044	0.945	0.852	0.968	0.910	0.827	0.804	0.962	1.132	1.215
016P37	1.134	1.062	0.988	0.947	0.918	0.958	0.964	0.966	0.984	1.002	1.070	1.050
022P13	1.242	1.120	1.035	0.941	0.936	0.955	0.925	0.872	0.935	0.975	1.069	1.113
025P20	1.222	1.106	1.018	0.970	0.951	0.966	0.960	0.955	0.962	0.930	0.994	1.034
032P41	1.161	1.070	1.025	0.928	0.929	1.023	1.003	0.941	0.943	0.958	1.025	1.045
037P01	1.186	1.069	1.046	0.987	0.932	0.909	0.922	0.928	0.961	0.987	1.056	1.090
041P16	1.213	1.060	1.027	0.964	0.930	0.999	0.969	0.907	0.934	0.968	1.013	1.088
042P10	1.092	1.065	0.972	0.944	0.923	0.953	0.977	1.017	0.997	0.996	1.021	1.075
043P08	1.134	1.050	0.997	0.941	0.941	1.023	1.022	0.937	0.936	0.956	1.045	1.061
043P78	1.222	1.141	1.078	0.964	0.920	0.934	0.907	0.923	0.922	0.985	1.038	1.072
046P35	1.082	0.994			0.904	0.928	0.963	0.953	1.009	1.005	1.099	1.108
050P79	1.167	1.098	1.025	0.953	0.931	0.961	0.960	0.948	0.935	0.977	1.033	1.070
050P81	1.144	1.105		0.988	0.956	0.950	0.955	0.961	0.898	0.956	1.024	1.126
057P65	1.149	1.070	1.029	0.984	0.965	0.973	0.968	0.950	0.960	0.985		

	Jan (N Sites)	Feb (N Sites)	Mar (N Sites)	Apr (N Sites)	May (N Sites)	Jun (N Sites)	Jul (N Sites)	Aug (N Sites)	Sep (N Sites)	Oct (N Sites)	Nov (N Sites)	Dec (N Sites)
057P88	1.200	1.119	1.067	0.984	0.902	0.929	0.848	0.962	0.981	0.984	1.064	1.063
063P76	1.163	1.071	1.010	0.996	0.987	0.942	0.876	0.975	0.988	0.986	1.019	1.037
068P52		1.113	1.067		0.959	0.967	0.954	0.971	0.963	0.979	1.029	1.023
071P38	1.126	1.052	1.006	0.979	0.982		0.960	0.949	0.945	0.958	1.016	1.055
073P57	1.027	1.025	0.926	0.886	0.875	0.896	0.949	0.900		1.732	1.133	1.045
079P39	1.362	1.221	1.080	0.915	0.849	0.831	0.808	0.885	0.945	1.028	1.205	1.222
081P89	1.279	1.180	1.043	0.919	0.882	0.928	0.922	0.946	0.933	1.009	1.036	1.063
083P29	1.193	1.056	1.018	0.970	0.921	0.981	1.012	0.943	0.940	0.950	1.017	1.055
084P25	1.209	1.100	1.064	1.018			1.017	0.976	0.990	1.018	1.083	1.117
089P40	1.182	1.087	1.024	0.968	0.947	0.924	0.939	0.956	0.997	0.967	1.014	1.051
090P54	1.302	1.164	1.011	0.965	0.940	0.930	0.951	0.966	0.968		0.963	1.012
092P36	1.316	1.190	1.085	0.953	0.881	0.911	0.879	0.906	0.871	0.996	1.080	1.140
094P55	1.218	1.071	1.035	0.987	0.968	0.968	0.930	0.906	0.948	0.964	1.003	1.074
095P73	1.116	1.021	0.998	0.971	0.963	0.995	1.002	0.947	0.961	0.978	1.026	1.044
096P27	1.215	1.134	1.074	0.958	0.914	0.939	0.953	0.933	0.941	0.952	1.011	1.068
098P70	1.110	1.021	0.977	0.957	0.955	1.033	1.057	0.949	0.937	0.968	1.028	1.038
104P33	1.721	1.175	1.248	0.971	0.833	0.769	0.728	0.779	0.847	1.009	1.360	1.493
106P19	1.157	1.078	1.014	0.962	0.922	0.937	0.952	0.984	0.945	0.981	1.055	1.065
112P28		1.024	0.984	0.954	0.966	0.993	0.989	0.956	0.984	0.927	1.101	1.165
113P15		1.070	1.022				0.945	0.976	0.942	0.955	1.043	1.084

	Jan (N Sites)	Feb (N Sites)	Mar (N Sites)	Apr (N Sites)	May (N Sites)	Jun (N Sites)	Jul (N Sites)	Aug (N Sites)	Sep (N Sites)	Oct (N Sites)	Nov (N Sites)	Dec (N Sites)
114P69	1.200	1.223	1.077	1.049	1.003	0.971	0.980	1.065	0.804	0.699	1.058	1.160
120P53	1.165	1.078	1.012	1.001		0.968	0.971	0.961	0.959	0.955	1.002	
120P60	1.165	1.047		0.959	0.959	0.972	0.993	0.968	0.966	0.931	1.043	1.039
M Factor	1.199	1.095	1.030	0.964	0.931	0.950	0.947	0.942	0.944	0.987	1.053	1.089
SD	0.113	0.066	0.050	0.028	0.038	0.049	0.059	0.047	0.046	0.132	0.067	0.082
DF	37	40	37	37	37	36	39	39	38	38	38	38
t-value at 95%	2.026	2.021	2.026	2.026	2.026	2.028	2.023	2.023	2.024	2.024	2.024	2.024
CI	0.037	0.021	0.017	0.009	0.012	0.016	0.019	0.015	0.015	0.043	0.022	0.027
M Factor High	1.236	1.116	1.047	0.973	0.943	0.966	0.966	0.957	0.959	1.030	1.075	1.116
M Factor Low	1.162	1.074	1.013	0.955	0.919	0.934	0.928	0.927	0.929	0.944	1.031	1.062

Table B-3 KYTC 2019 Seasonal (Monthly) Factors for Urban General

	Jan (N Sites)	Feb (N Sites)	Mar (N Sites)	Apr (N Sites)	May (N Sites)	Jun (N Sites)	Jul (N Sites)	Aug (N Sites)	Sep (N Sites)	Oct (N Sites)	Nov (N Sites)	Dec (N Sites)
	1.123 (25)	1.040 (26)	1.002 (25)	0.966 (23)	0.956 (24)	0.986 (24)	0.986 (26)	0.947 (25)	0.961 (23)	0.977 (23)	1.050 (24)	1.050 (24)
005P71	1.156	1.070	1.010	0.986	0.964	0.984	0.986	0.944	0.948	0.960	1.005	1.023
010I01	1.075	0.994	0.959	0.913			0.991	0.963	0.955	1.035	1.225	
011P66	1.140	1.060	1.009	0.970	0.947	0.976	0.992	0.952	0.952	0.975	1.019	1.042
017P62	1.142	1.076	1.070		0.894	0.932	0.901	0.948	0.935	0.975	1.136	1.075
024P61	1.130	1.043	0.970				0.895	0.926	0.938	0.938	1.107	1.186
030P17	1.086	1.042	0.986	0.969	0.971	0.974	0.985					
036P43	0.991	0.887			1.094	1.046	1.010	0.931	0.959	0.986	1.069	1.067
036P56	1.164	1.071	0.991	0.947	0.937	1.013	1.038	0.952	0.957	0.943	1.017	1.014
037P03	1.111	1.025	1.008	0.977	0.946	1.011	1.032	0.947	0.921	0.966	1.083	1.007
047P07	1.161	1.066	1.013	0.986	0.948	0.908	0.890	0.941	0.993	1.011	1.059	1.089
048P18	1.111	1.012	0.973	0.954	0.937	0.981	1.015	0.976	0.978	0.982	1.047	1.061
049P85	1.124	1.043	1.008	0.963	0.933	0.980	1.005	0.959	0.936	0.995	1.024	1.063
051P58	1.147	1.044	0.991	0.989	0.987	0.962	0.962	0.968	0.997	0.986	0.996	0.997
054P59	1.132	1.075	0.999	0.968	0.963	0.958	0.978	0.946	0.957	0.974	1.016	1.071
056P14	1.132	1.049	1.013	0.984	0.971	0.985	1.004	0.960	0.958	0.955	1.012	1.001
056P21	1.099	1.022	0.995	0.967	0.951	0.975	0.981	0.975	0.971	1.000	1.017	1.066
056P80		1.044	1.005	0.990	0.962	0.977	1.001	0.973	0.980	0.995	1.038	1.043
056P84	1.129	1.059	1.019	0.969	0.958	0.968	1.002	0.975	0.975	0.981	0.995	0.992

	Jan (N Sites)	Feb (N Sites)	Mar (N Sites)	Apr (N Sites)	May (N Sites)	Jun (N Sites)	Jul (N Sites)	Aug (N Sites)	Sep (N Sites)	Oct (N Sites)	Nov (N Sites)	Dec (N Sites)
059P49	1.102	1.032	1.002	0.987	0.955	0.988	0.992	0.969			1.000	0.983
059P82	1.285	1.145	1.096	0.937	1.005	1.124	0.979	0.691		0.850	1.114	1.064
076P87	1.124	1.050	1.014	0.963	0.962	0.992	0.973	0.952	0.953	0.978	1.017	1.049
078P24	1.084	0.998	0.999	0.972	0.963	0.987	1.022	0.951	0.967			1.063
087P86	1.141	1.045	0.992	0.956	0.843	0.966	0.980	0.984	0.999	1.004	1.070	1.083
098P12	1.122	1.029	0.984	0.959	0.970	0.991	0.997	0.966	0.968	0.983	1.019	1.033
109I04	1.108	1.033	0.977	0.948	0.939	1.008	1.026	0.965	0.947	0.988	1.038	1.052
118I03	1.088	1.014	0.974	0.960	0.942	0.979	0.990	0.950	0.968	1.017	1.069	1.075
M Factor	1.123	1.040	1.002	0.966	0.956	0.986	0.986	0.947	0.961	0.977	1.050	1.050
SD	0.049	0.043	0.029	0.019	0.043	0.040	0.038	0.055	0.020	0.036	0.054	0.042
DF	24	25	24	22	23	23	25	24	22	22	23	23
t-value at 95%	2.064	2.060	2.064	2.074	2.069	2.069	2.060	2.064	2.074	2.074	2.069	2.069
CI	0.020	0.017	0.012	0.008	0.018	0.017	0.015	0.023	0.009	0.015	0.023	0.018
M Factor High	1.143	1.057	1.014	0.974	0.974	1.003	1.001	0.970	0.970	0.992	1.073	1.068
M Factor Low	1.103	1.023	0.990	0.958	0.938	0.969	0.971	0.924	0.952	0.962	1.027	1.032

Table B-4 KYTC 2019 Seasonal (Monthly) Factors for Urban Interstate

	Jan (N Sites)	Feb (N Sites)	Mar (N Sites)	Apr (N Sites)	May (N Sites)	Jun (N Sites)	Jul (N Sites)	Aug (N Sites)	Sep (N Sites)	Oct (N Sites)	Nov (N Sites)	Dec (N Sites)
	1.169 (7)	1.071 (7)	0.989 (7)	0.984 (7)	0.969 (7)	0.950 (8)	0.956 (8)	0.964 (8)	0.983 (7)	0.968 (7)	1.024 (6)	1.023 (6)
008P63	1.200				0.950	0.930	0.921	1.005	1.004	0.945		
019P96	1.131	1.031	1.004	0.969	0.967	0.956	0.974	0.964	0.979	0.983	1.032	1.036
019P97	1.161	1.048	1.012	0.966	0.959	0.958	0.982	0.948				
047P68	1.247	1.167	0.973	0.992		0.907	0.884	0.939	0.995	0.959	1.025	1.018
056P94	1.105	1.019	0.988	0.982	0.969	0.975	1.003	0.967	0.971	0.974	1.028	1.036
056P98		1.059	1.012	0.978	0.973	0.972	0.999	0.969	0.968	0.974	1.011	1.019
059P93	1.127	1.050	0.971	0.993	0.979	0.960	0.966	0.973	0.983	0.987	1.021	1.012
114P67	1.216	1.125	0.964	1.007	0.983	0.944	0.915	0.944	0.980	0.954	1.025	1.016
M Factor	1.169	1.071	0.989	0.984	0.969	0.950	0.956	0.964	0.983	0.968	1.024	1.023
SD	0.053	0.054	0.020	0.015	0.011	0.023	0.044	0.021	0.013	0.016	0.007	0.010
DF	6	6	6	6	6	7	7	7	6	6	5	5
t-value at 95%	2.447	2.447	2.447	2.447	2.447	2.365	2.365	2.365	2.447	2.447	2.571	2.571
CI	0.049	0.050	0.019	0.013	0.011	0.019	0.036	0.018	0.012	0.014	0.008	0.011
M Factor High	1.218	1.121	1.008	0.997	0.980	0.969	0.992	0.982	0.995	0.982	1.032	1.034
M Factor Low	1.120	1.021	0.970	0.971	0.958	0.931	0.920	0.946	0.971	0.954	1.016	1.012

Table B-5 KYTC 2019 Daily Factors for Rural Interstate

KYTC 2019 Daily Factors for Rural Interstate		JAN	FEB	MAR	APR	MAY	JUN	JUL	AUG	SEP	OCT	NOV	DEC
D Factors	Sunday	1.166 (7)	1.138 (8)	1.080 (8)	1.043 (8)	1.056 (7)	1.024 (7)	0.938 (5)	0.976 (4)	1.035 (5)	0.989 (5)	1.092 (5)	1.030 (6)
	Monday	1.053 (7)	1.041 (8)	1.117 (8)	1.066 (8)	1.048 (7)	1.089 (7)	1.097 (5)	1.127 (4)	1.042 (5)	1.096 (5)	1.101 (5)	1.024 (6)
	Tuesday	1.011 (7)	1.020 (8)	1.103 (8)	1.076 (8)	1.087 (7)	1.112 (7)	1.120 (5)	1.134 (4)	1.080 (5)	1.081 (5)	1.024 (5)	1.149 (6)
	Wednesday	0.982 (7)	1.007 (8)	1.047 (8)	1.032 (8)	1.054 (7)	1.068 (7)	1.039 (5)	1.082 (4)	1.049 (5)	1.058 (5)	0.926 (5)	1.177 (6)
	Thursday	0.924 (7)	0.931 (8)	0.960 (8)	0.940 (8)	0.951 (7)	0.969 (7)	1.037 (5)	0.964 (4)	0.957 (5)	0.982 (5)	1.038 (5)	0.937 (6)
	Friday	0.849 (7)	0.853 (8)	0.822 (8)	0.854 (8)	0.831 (7)	0.848 (7)	0.897 (5)	0.834 (4)	0.851 (5)	0.831 (5)	0.906 (5)	0.850 (6)
	Saturday	1.113 (7)	1.077 (8)	0.971 (8)	1.046 (8)	1.038 (7)	0.966 (7)	0.938 (5)	0.967 (4)	1.030 (5)	1.021 (5)	0.966 (5)	0.938 (6)
022P47	Sunday	1.293	1.173	1.110	1.075	1.088	1.056	0.983		1.039	1.034	1.132	0.998
	Monday	0.977	0.988	1.062	1.016	1.027	1.045	1.040		1.026	1.037	1.029	1.017
	Tuesday	0.993	0.979	1.042	1.048	1.060	1.077	1.062		1.083	1.052	0.995	1.138
	Wednesday	0.971	1.007	1.006	1.024	1.039	1.043	1.005		1.062	1.053	0.934	1.133
	Thursday	0.929	0.912	0.927	0.917	0.942	0.954	1.017		0.934	0.959	1.008	0.936
	Friday	0.816	0.872	0.844	0.861	0.836	0.846	0.895		0.832	0.826	0.884	0.857
	Saturday	1.157	1.139	1.064	1.107	1.059	1.023	1.018		1.081	1.094	1.057	0.981
034P74	Sunday		1.313	1.273	1.175	1.177	1.196						
	Monday		1.032	0.968	1.035	1.061	1.010						
	Tuesday		0.955	1.016	0.989	1.001	1.002						
	Wednesday		0.958	0.980	0.987	0.986	0.988						
	Thursday		0.910	0.938	0.918	0.909	0.932						
	Friday		0.838	0.835	0.857	0.833	0.872						
	Saturday		1.128	1.094	1.108	1.120	1.060						
034P90	Sunday				1.124								
	Monday				1.048								
	Tuesday				1.043								
	Wednesday				0.998								

KYTC 2019 Daily Factors for Rural Interstate		JAN	FEB	MAR	APR	MAY	JUN	JUL	AUG	SEP	OCT	NOV	DEC
	Thursday				0.913								
	Friday				0.867								
	Saturday				1.057								
041P23	Sunday	1.271	1.167	1.030	1.000	1.021	0.959						1.047
	Monday	1.020	1.021	1.131	1.072	1.031	1.104						0.994
	Tuesday	0.990	1.019	1.118	1.114	1.112	1.135						1.272
	Wednesday	0.971	1.028	1.064	1.036	1.082	1.101						1.454
	Thursday	0.916	0.947	0.971	0.960	0.979	0.987						0.854
	Friday	0.807	0.846	0.815	0.850	0.826	0.840						0.814
	Saturday	1.161	1.029	0.949	1.014	1.006	0.945						0.858
052P48	Sunday	0.847	1.033	1.013						1.032	0.970	1.136	1.081
	Monday	1.143	1.051	1.066						1.020	1.110	1.166	0.930
	Tuesday	1.089	1.049	1.075						1.075	1.103	1.074	1.096
	Wednesday	0.997	1.003	1.020						1.027	1.037	0.906	1.120
	Thursday	0.964	0.964	0.988						0.948	1.003	1.058	0.978
	Friday	0.957	0.850	0.848						0.859	0.832	0.978	0.850
	Saturday	1.063	1.089	1.029						1.077	1.001	0.794	1.005
072P51	Sunday	1.131	1.080	1.027	0.988	1.025	0.970	0.890	0.969	1.011	0.943	1.038	1.036
	Monday	1.070	1.057	1.176	1.087	1.070	1.119	1.149	1.155	1.040	1.094	1.124	1.087
	Tuesday	0.996	1.052	1.132	1.077	1.112	1.131	1.132	1.125	1.088	1.083	1.038	1.153
	Wednesday	0.991	1.011	1.073	1.035	1.071	1.083	1.053	1.082	1.067	1.069	0.898	1.153
	Thursday	0.914	0.942	0.979	0.973	0.969	0.973	1.046	0.971	0.971	0.980	1.093	0.945
	Friday	0.861	0.868	0.815	0.852	0.841	0.866	0.904	0.838	0.856	0.850	0.888	0.843
	Saturday	1.095	1.025	0.899	1.028	0.966	0.921	0.899	0.939	1.004	1.031	0.971	0.881
106P22	Sunday	1.354	1.269	1.169	1.098	1.104	1.133	1.076	1.085	1.099	1.056	1.132	1.088
	Monday	1.000	1.063	1.099	1.070	1.084	1.064	1.038	1.075	1.076	1.095	1.072	1.061

KYTC 2019 Daily Factors for Rural Interstate		JAN	FEB	MAR	APR	MAY	JUN	JUL	AUG	SEP	OCT	NOV	DEC
	Tuesday	0.974	0.969	1.016	1.037	1.028	1.036	1.019	1.061	1.054	1.056	0.990	1.092
	Wednesday	0.976	0.974	0.978	1.008	1.012	1.007	0.973	1.019	1.036	1.052	0.964	1.030
	Thursday	0.911	0.918	0.945	0.933	0.939	0.943	1.017	0.956	0.959	0.981	0.984	0.942
	Friday	0.823	0.859	0.853	0.863	0.852	0.856	0.898	0.862	0.848	0.823	0.884	0.870
	Saturday	1.116	1.044	1.003	1.032	1.028	1.009	0.998	0.983	0.977	0.994	1.011	0.961
107P91	Sunday	1.153	1.079	1.023	0.992	1.018	0.977	0.905	0.975	0.995	0.944	1.024	0.930
	Monday	1.066	1.051	1.186	1.095	1.052	1.105	1.116	1.116	1.046	1.145	1.112	1.054
	Tuesday	1.004	1.038	1.159	1.101	1.105	1.142	1.131	1.121	1.099	1.111	1.023	1.144
	Wednesday	0.982	1.009	1.082	1.059	1.060	1.068	1.048	1.065	1.054	1.078	0.930	1.173
	Thursday	0.931	0.934	0.978	0.966	0.964	0.989	1.040	0.966	0.973	0.986	1.047	0.967
	Friday	0.845	0.859	0.804	0.845	0.832	0.849	0.898	0.844	0.861	0.827	0.897	0.868
	Saturday	1.083	1.072	0.887	0.993	1.020	0.934	0.921	0.973	1.009	0.984	0.997	0.941
118P83	Sunday	1.112	0.991	0.994	0.891	0.957	0.877	0.834	0.874				
	Monday	1.095	1.061	1.247	1.101	1.012	1.179	1.145	1.162				
	Tuesday	1.029	1.100	1.267	1.198	1.188	1.261	1.255	1.230				
	Wednesday	0.986	1.067	1.172	1.108	1.132	1.187	1.119	1.164				
	Thursday	0.905	0.924	0.953	0.936	0.956	1.008	1.063	0.965				
	Friday	0.834	0.834	0.762	0.838	0.795	0.810	0.888	0.794				
	Saturday	1.113	1.087	0.841	1.030	1.066	0.870	0.855	0.973				
tsid1899524345	Sunday											1.516	2.116
	Monday						1.067	0.828				1.066	0.640
	Tuesday						0.639	2.284				0.768	0.855
	Wednesday						0.479	0.417				1.281	1.021
	Thursday						0.438	0.849				0.756	0.721
	Friday							0.582				0.951	1.438
	Saturday											1.058	1.362
tsid1899544422	Sunday											1.675	1.073
	Monday						1.058	0.860			1.093	1.458	1.669
	Tuesday						0.652	0.582			0.653	0.659	0.861

KYTC 2019 Daily Factors for Rural Interstate		JAN	FEB	MAR	APR	MAY	JUN	JUL	AUG	SEP	OCT	NOV	DEC
	Wednesday						0.809	0.726			0.781	0.835	1.084
	Thursday						0.518	0.754			0.687	0.827	0.907
	Friday						0.774	0.750			0.825	0.770	0.687
	Saturday										1.765	2.023	1.211
D Factor	Sunday	1.166	1.138	1.080	1.043	1.056	1.024	0.938	0.976	1.035	0.989	1.092	1.030
	Monday	1.053	1.041	1.117	1.066	1.048	1.089	1.097	1.127	1.042	1.096	1.101	1.024
	Tuesday	1.011	1.020	1.103	1.076	1.087	1.112	1.120	1.134	1.080	1.081	1.024	1.149
	Wednesday	0.982	1.007	1.047	1.032	1.054	1.068	1.039	1.082	1.049	1.058	0.926	1.177
	Thursday	0.924	0.931	0.960	0.940	0.951	0.969	1.037	0.964	0.957	0.982	1.038	0.937
	Friday	0.849	0.853	0.822	0.854	0.831	0.848	0.897	0.834	0.851	0.831	0.906	0.850
	Saturday	1.113	1.077	0.971	1.046	1.038	0.966	0.938	0.967	1.030	1.021	0.966	0.938
SD	Sunday	0.168	0.113	0.097	0.092	0.072	0.111	0.094	0.086	0.040	0.052	0.254	0.385
	Monday	0.058	0.026	0.087	0.030	0.026	0.049	0.132	0.040	0.022	0.035	0.144	0.286
	Tuesday	0.038	0.049	0.085	0.063	0.062	0.218	0.520	0.070	0.017	0.176	0.157	0.146
	Wednesday	0.010	0.033	0.065	0.038	0.048	0.212	0.249	0.061	0.017	0.114	0.145	0.136
	Thursday	0.020	0.019	0.022	0.024	0.023	0.219	0.119	0.006	0.016	0.121	0.127	0.084
	Friday	0.051	0.014	0.030	0.010	0.018	0.032	0.123	0.029	0.012	0.010	0.066	0.224
	Saturday	0.036	0.043	0.091	0.042	0.049	0.067	0.068	0.019	0.047	0.306	0.404	0.173
DF		6	7	7	7	6	6	4	3	4	4	4	5
t-value at 95%		2.447	2.365	2.365	2.365	2.447	2.447	2.776	3.182	2.776	2.776	2.776	2.571
CI	Sunday	0.155	0.094	0.082	0.077	0.067	0.102	0.117	0.137	0.049	0.065	0.315	0.404
	Monday	0.053	0.021	0.073	0.025	0.024	0.046	0.164	0.064	0.027	0.043	0.179	0.300
	Tuesday	0.035	0.041	0.071	0.053	0.058	0.202	0.645	0.112	0.021	0.219	0.195	0.153
	Wednesday	0.009	0.027	0.054	0.032	0.044	0.196	0.310	0.096	0.021	0.141	0.181	0.143
	Thursday	0.018	0.016	0.019	0.020	0.022	0.202	0.148	0.010	0.020	0.150	0.158	0.088
	Friday	0.047	0.011	0.025	0.008	0.016	0.030	0.152	0.046	0.015	0.012	0.082	0.235
	Saturday	0.034	0.036	0.076	0.035	0.046	0.062	0.085	0.031	0.058	0.380	0.501	0.182
D Factor High	Sunday	1.321	1.232	1.162	1.120	1.123	1.126	1.055	1.113	1.084	1.054	1.407	1.434
D Factor Low		1.011	1.044	0.998	0.966	0.989	0.922	0.821	0.839	0.986	0.924	0.777	0.626
D Factor High	Monday	1.106	1.062	1.190	1.091	1.072	1.135	1.261	1.191	1.069	1.139	1.280	1.324
D Factor Low		1.000	1.020	1.044	1.041	1.024	1.043	0.933	1.063	1.015	1.053	0.922	0.724

KYTC 2019 Daily Factors for Rural Interstate		JAN	FEB	MAR	APR	MAY	JUN	JUL	AUG	SEP	OCT	NOV	DEC
D Factor High	Tuesday	1.049	1.069	1.188	1.139	1.149	1.330	1.640	1.204	1.097	1.257	1.181	1.295
D Factor Low		0.976	0.979	1.032	1.023	1.029	0.910	0.475	1.022	1.059	0.862	0.829	0.996
D Factor High	Wednesday	0.991	1.034	1.101	1.064	1.098	1.264	1.349	1.178	1.070	1.199	1.107	1.320
D Factor Low		0.973	0.980	0.993	1.000	1.010	0.872	0.729	0.986	1.028	0.917	0.745	1.034
D Factor High	Thursday	0.942	0.947	0.979	0.960	0.973	1.171	1.185	0.974	0.977	1.132	1.196	1.025
D Factor Low		0.906	0.915	0.941	0.920	0.929	0.767	0.889	0.954	0.937	0.832	0.880	0.849
D Factor High	Friday	0.896	0.864	0.847	0.862	0.847	0.878	1.049	0.880	0.866	0.843	0.988	1.085
D Factor Low		0.802	0.842	0.797	0.846	0.815	0.818	0.745	0.788	0.836	0.819	0.824	0.615
D Factor High	Saturday	1.147	1.113	1.047	1.081	1.084	1.028	1.023	0.998	1.088	1.401	1.467	1.120
D Factor Low		1.079	1.041	0.895	1.011	0.992	0.904	0.853	0.936	0.972	0.641	0.465	0.756

Table B-6 KYTC 2019 Daily Factors for Rural General

KYTC 2019 Daily Factors for Rural General		JAN	FEB	MAR	APR	MAY	JUN	JUL	AUG	SEP	OCT	NOV	DEC
D Factors	Sunday	1.450 (42)	1.348 (45)	1.327 (41)	1.282 (42)	1.242 (41)	1.218 (39)	1.196 (42)	1.236 (40)	1.226 (39)	1.269 (39)	1.236 (39)	1.266 (40)
	Monday	0.949 (42)	0.976 (45)	0.995 (41)	0.999 (42)	1.025 (41)	1.008 (39)	1.007 (42)	1.016 (40)	1.044 (39)	1.014 (39)	0.958 (39)	0.979 (40)
	Tuesday	0.982 (42)	0.946 (45)	0.963 (41)	0.967 (42)	0.977 (41)	0.985 (39)	0.989 (42)	1.021 (40)	0.983 (39)	0.972 (39)	0.979 (39)	1.007 (40)
	Wednesday	0.950 (42)	0.954 (45)	0.942 (41)	0.952 (42)	0.982 (41)	0.998 (39)	0.960 (42)	0.991 (40)	0.992 (39)	0.985 (39)	0.937 (39)	1.020 (40)
	Thursday	0.924 (42)	0.920 (45)	0.938 (41)	0.939 (42)	0.970 (41)	0.962 (39)	1.005 (42)	0.952 (40)	0.954 (39)	0.947 (39)	0.996 (39)	0.922 (40)
	Friday	0.818 (42)	0.883 (45)	0.883 (41)	0.911 (42)	0.863 (41)	0.877 (39)	0.881 (42)	0.861 (40)	0.865 (39)	0.859 (39)	0.884 (39)	0.865 (40)
	Saturday	1.160 (42)	1.136 (45)	1.090 (41)	1.058 (42)	1.042 (41)	1.038 (39)	1.042 (42)	1.031 (40)	1.037 (39)	1.068 (39)	1.112 (39)	1.049 (40)
001P34	Sunday	1.483	1.469	1.373	1.324	1.408	1.306	1.336	1.328	1.309	1.382		1.293
	Monday	0.881	0.983	0.963	0.966	0.942	0.950	0.973	0.973	1.042	1.015		0.941
	Tuesday	1.063	0.948	0.941	0.946	0.986	0.995	0.975	0.989	0.949	0.965		1.005
	Wednesday	0.938	0.943	0.922	0.933	0.950	0.962	0.917	0.967	0.950	0.939		1.042
	Thursday	0.901	0.914	0.963	0.936	0.978	0.952	0.986	0.963	0.938	0.921		0.932
	Friday	0.829	0.842	0.855	0.897	0.841	0.872	0.850	0.837	0.831	0.846		0.841
	Saturday	1.154	1.104	1.138	1.117	1.053	1.065	1.090	1.063	1.110	1.085		1.057
007P31	Sunday	1.478	1.384	1.248	1.218	1.233		1.040				1.282	1.189
	Monday	0.931	0.956	1.006	0.989	1.017		1.012				0.961	0.969
	Tuesday	1.003	0.944	0.984	0.986	0.994		0.988				0.908	1.053
	Wednesday	0.925	0.959	0.980	0.959	0.997		0.999				0.878	1.070
	Thursday	0.921	0.895	0.933	0.903	0.921		0.976				0.999	0.903
	Friday	0.815	0.858	0.851	0.885	0.833		0.883				0.940	0.849
	Saturday	1.165	1.180	1.084	1.144	1.099		1.134				1.143	1.044
009P26	Sunday	1.615	1.495	1.451	1.372	1.350	1.375		1.328	1.313	1.379	1.349	1.352
	Monday	0.942	0.976	0.988	0.991	1.054	0.989		0.998	1.065	1.016	0.959	0.983
	Tuesday	0.972	0.931	0.948	0.948	0.946	0.964		0.979	0.965	0.959	0.947	0.997
	Wednesday	0.933	0.949	0.925	0.929	0.944	0.978		0.958	0.962	0.953	0.917	0.996

KYTC 2019 Daily Factors for Rural General		JAN	FEB	MAR	APR	MAY	JUN	JUL	AUG	SEP	OCT	NOV	DEC
	Thursday	0.880	0.871	0.886	0.886	0.898	0.888		0.898	0.903	0.898	0.939	0.902
	Friday	0.796	0.881	0.880	0.886	0.868	0.863		0.864	0.865	0.848	0.882	0.855
	Saturday	1.209	1.117	1.113	1.145	1.077	1.090		1.102	1.042	1.104	1.147	1.044
010P42	Sunday	1.751	1.585	1.525	1.513	1.380	1.387	1.298	1.315	1.331	1.374	1.472	1.358
	Monday	0.895	0.939	0.964	0.945	1.015	0.992	0.949	0.973	1.024	0.987	0.920	0.929
	Tuesday	0.982	0.926	0.931	0.942	0.947	0.954	0.957	0.989	0.950	0.972	0.932	1.032
	Wednesday	0.905	0.923	0.921	0.923	0.945	0.956	0.926	0.969	0.954	0.965	0.898	1.048
	Thursday	0.886	0.872	0.892	0.878	0.912	0.911	0.990	0.919	0.902	0.934	0.971	0.898
	Friday	0.805	0.877	0.888	0.880	0.858	0.852	0.872	0.855	0.850	0.826	0.859	0.850
	Saturday	1.224	1.172	1.112	1.161	1.095	1.104	1.117	1.100	1.129	1.095	1.170	1.025
013I02	Sunday	1.363	1.338	1.153	1.159	1.019	1.111	1.066	1.045	0.980	1.051	0.967	1.130
	Monday	0.912	0.883	0.921	1.023	1.088	0.992	1.053	1.032	1.152	1.092	0.951	0.979
	Tuesday	1.073	0.914	0.980	0.924	1.039	0.980	1.000	1.048	1.042	1.033	1.083	1.087
	Wednesday	0.920	0.968	0.930	0.927	1.085	1.098	0.947	1.059	1.113	1.070	1.013	1.022
	Thursday	0.944	1.010	0.938	0.913	1.052	1.082	1.041	1.019	1.043	0.966	1.053	0.981
	Friday	0.852	0.924	1.066	1.162	0.905	0.912	0.947	0.958	0.930	0.877	0.907	0.906
	Saturday	1.091	1.085	1.055	0.960	0.862	0.877	0.961	0.868	0.820	0.948	1.052	0.933
016P37	Sunday	1.318	1.219	1.212	1.187	1.195	1.178	1.137	1.222	1.146	1.223	1.171	1.212
	Monday	0.999	1.003	1.026	1.000	1.042	0.981	1.033	1.024	1.040	1.024	0.989	1.001
	Tuesday	0.987	0.947	0.977	1.001	0.978	0.987	0.991	1.030	0.987	0.979	1.040	0.986
	Wednesday	0.978	0.969	0.959	0.969	0.991	1.002	0.981	1.006	1.001	0.993	0.963	1.067
	Thursday	0.934	0.958	0.980	0.997	1.000	0.974	0.993	0.991	0.989	0.960	0.977	0.957
	Friday	0.821	0.881	0.852	0.866	0.848	0.884	0.885	0.824	0.854	0.844	0.854	0.851
	Saturday	1.090	1.094	1.064	1.032	1.007	1.037	1.014	0.983	1.030	1.051	1.063	0.995
022P13	Sunday	1.419	1.263	1.265	1.267	1.203	1.161	1.179	1.209	1.152	1.261	1.188	1.177
	Monday	0.926	0.951	1.044	0.990	1.021	1.002	0.999	1.049	1.038	0.980	0.957	0.939

KYTC 2019 Daily Factors for Rural General		JAN	FEB	MAR	APR	MAY	JUN	JUL	AUG	SEP	OCT	NOV	DEC
	Tuesday	0.981	0.941	0.971	0.968	0.967	0.989	0.986	1.059	0.976	0.964	0.980	1.020
	Wednesday	0.986	0.968	0.942	0.961	0.980	1.045	0.991	1.052	0.996	1.008	0.947	1.072
	Thursday	0.942	0.904	0.913	0.923	0.956	0.986	1.022	0.973	0.962	0.955	1.019	0.926
	Friday	0.802	0.972	0.929	0.940	0.892	0.874	0.891	0.845	0.891	0.885	0.905	0.911
	Saturday	1.147	1.078	1.012	1.022	1.033	0.985	0.973	0.898	1.021	1.021	1.052	1.006
025P20	Sunday	1.510	1.346	1.263	1.210	1.148	1.208	1.154	1.170	1.127	1.114	1.162	1.248
	Monday	0.924	0.979	1.018	1.018	1.036	1.006	1.000	1.017	1.036	1.039	0.992	0.994
	Tuesday	0.985	0.958	0.987	1.016	1.010	0.992	1.006	1.051	1.028	1.040	1.019	1.051
	Wednesday	0.956	0.973	0.970	0.990	1.020	1.019	0.975	1.035	1.035	1.045	0.960	1.042
	Thursday	0.913	0.916	0.942	0.937	0.977	0.950	1.026	0.963	0.974	0.989	0.992	0.937
	Friday	0.790	0.843	0.854	0.853	0.834	0.840	0.868	0.830	0.832	0.811	0.848	0.829
	Saturday	1.201	1.129	1.054	1.046	1.031	1.058	1.014	0.998	1.021	1.024	1.085	0.992
032P41	Sunday	1.547	1.438	1.405	1.400	1.313	1.275	1.280	1.351	1.323	1.398	1.366	1.364
	Monday	0.921	0.917	0.967	0.958	1.025	0.971	0.954	0.974	1.013	0.952	0.929	0.914
	Tuesday	0.937	0.912	0.926	0.926	0.938	0.946	0.956	0.968	0.922	0.921	0.935	1.007
	Wednesday	0.934	0.954	0.898	0.933	0.958	1.003	0.951	0.951	0.972	0.952	0.915	1.012
	Thursday	0.922	0.878	0.896	0.901	0.939	0.955	0.998	0.914	0.935	0.915	0.971	0.885
	Friday	0.802	0.938	0.933	0.925	0.871	0.891	0.887	0.887	0.845	0.870	0.877	0.867
	Saturday	1.252	1.157	1.144	1.111	1.066	1.040	1.061	1.078	1.121	1.169	1.164	1.100
033P30	Sunday	1.513	1.432		1.305	1.181	1.166	1.194					
	Monday	0.938	1.006		1.028	1.070	1.052	1.040					
	Tuesday	1.004	0.949		1.022	1.020	1.029	1.010					
	Wednesday	0.952	0.932		0.940	0.978	0.959	0.952					
	Thursday	0.973	0.893		0.977	1.020	1.019	1.036					
	Friday	0.773	0.892		0.872	0.873	0.885	0.856					
	Saturday	1.106	1.064		0.954	0.917	0.938	0.974					
037P01	Sunday	1.461	1.355	1.347	1.256	1.192	1.218	1.224	1.225	1.169	1.253	1.209	1.246
	Monday	0.960	0.893	0.980	1.000	1.043	1.005	0.967	1.031	1.060	1.020	0.962	0.974
	Tuesday	0.868	0.943	0.913	0.939	0.945	0.975	0.959	0.986	0.969	0.949	0.935	1.021

KYTC 2019 Daily Factors for Rural General		JAN	FEB	MAR	APR	MAY	JUN	JUL	AUG	SEP	OCT	NOV	DEC
041P16	Wednesday	0.926	0.916	0.892	0.901	0.927	0.966	0.903	0.965	0.962	0.957	0.925	0.963
	Thursday	0.908	0.931	0.920	0.943	0.951	0.919	1.014	0.909	0.941	0.932	0.968	0.896
	Friday	0.815	0.900	0.900	0.911	0.875	0.888	0.917	0.887	0.870	0.859	0.901	0.858
	Saturday	1.399	1.245	1.215	1.149	1.149	1.099	1.085	1.070	1.089	1.129	1.189	1.147
	Sunday	1.321	1.280	1.276	1.236	1.211	1.126	1.125	1.133	1.219	1.223	1.196	1.203
	Monday	0.991	0.978	1.014	0.984	0.997	1.035	1.019	1.018	1.046	0.980	0.895	0.995
	Tuesday	0.972	0.946	0.945	0.944	0.993	0.986	1.014	1.034	0.967	0.952	0.883	1.001
	Wednesday	0.967	0.962	0.906	0.939	0.958	1.029	0.962	0.978	0.975	0.966	0.995	0.996
042P10	Thursday	0.960	0.887	0.952	0.960	0.970	0.980	1.003	0.939	0.925	0.953	1.054	0.918
	Friday	0.782	0.890	0.900	0.938	0.894	0.877	0.887	0.873	0.871	0.893	0.922	0.859
	Saturday	1.178	1.178	1.103	1.061	1.031	1.001	1.019	1.068	1.070	1.102	1.141	1.101
	Sunday	1.409	1.283	1.329	1.281	1.262	1.243	1.296	1.314	1.326	1.257	1.185	1.274
	Monday	0.953	1.000	0.975	0.979	0.977	0.955	0.936	0.971	0.997	0.992	0.961	0.972
	Tuesday	0.982	0.959	0.956	0.978	0.969	0.963	0.941	1.018	0.934	0.947	1.006	0.947
	Wednesday	0.970	0.946	0.947	0.941	0.988	1.015	0.930	0.959	0.983	0.989	0.975	1.019
	Thursday	0.889	0.937	0.946	1.008	0.978	0.976	1.037	0.965	0.979	0.935	1.006	0.929
043P08	Friday	0.811	0.844	0.848	0.881	0.851	0.877	0.898	0.821	0.847	0.877	0.892	0.884
	Saturday	1.199	1.151	1.130	1.015	1.062	1.042	1.058	1.076	1.050	1.089	1.020	1.060
	Sunday	1.595	1.461	1.529	1.435	1.389	1.331	1.331	1.435	1.441	1.481	1.377	1.420
	Monday	0.948	0.935	0.953	0.964	1.048	0.960	0.961	0.965	1.001	1.004	0.904	0.951
	Tuesday	0.995	0.925	0.904	0.897	0.935	0.950	0.938	0.977	0.904	0.943	1.006	0.972
	Wednesday	0.955	0.901	0.862	0.917	0.908	0.926	0.900	0.895	0.921	0.942	0.908	1.012
	Thursday	0.917	0.897	0.909	0.938	0.931	0.963	0.998	0.934	0.910	0.899	0.988	0.905
	Friday	0.788	0.880	0.872	0.899	0.835	0.883	0.870	0.865	0.863	0.847	0.836	0.833
043P78	Saturday	1.103	1.241	1.277	1.134	1.132	1.104	1.139	1.112	1.165	1.096	1.159	1.085
	Sunday	1.330	1.199	1.234	1.171	1.131	1.168	1.120	1.174	1.133	1.198	1.142	1.229
	Monday	0.996	1.003	1.011	1.039	1.045	1.024	1.063	1.060	1.047	1.014	0.978	1.007
	Tuesday	0.992	0.943	0.948	0.993	1.024	0.996	1.046	1.069	1.011	0.965	0.988	0.985
	Wednesday	0.979	0.966	0.963	0.942	1.016	1.002	0.963	1.005	1.010	0.997	0.932	1.014
	Thursday	0.917	0.946	0.954	0.993	1.008	0.981	1.021	0.976	0.997	0.966	1.011	0.927
	Friday	0.829	0.910	0.895	0.921	0.877	0.901	0.856	0.850	0.877	0.889	0.892	0.875

KYTC 2019 Daily Factors for Rural General		JAN	FEB	MAR	APR	MAY	JUN	JUL	AUG	SEP	OCT	NOV	DEC
	Saturday	1.092	1.089	1.061	0.978	0.938	0.965	0.977	0.932	0.961	1.021	1.103	1.031
046P35	Sunday	1.721	1.588			1.441	1.417	1.408	1.466	1.373	1.443	1.382	1.468
	Monday	0.879	0.922			0.978	0.944	0.913	0.954	1.003	0.962	0.906	0.916
	Tuesday	0.942	0.876			0.901	0.908	0.914	0.952	0.930	0.925	0.919	0.954
	Wednesday	0.906	0.894			0.924	0.936	0.912	0.928	0.938	0.953	0.895	1.002
	Thursday	0.884	0.868			0.936	0.915	0.968	0.914	0.929	0.894	0.972	0.860
	Friday	0.809	0.891			0.857	0.869	0.888	0.852	0.864	0.850	0.875	0.842
	Saturday	1.335	1.334			1.167	1.217	1.184	1.145	1.113	1.188	1.255	1.205
050P79	Sunday	1.310	1.257	1.248	1.190	1.170	1.160	1.178	1.188	1.215	1.223	1.160	1.226
	Monday	0.961	0.997	0.999	1.045	1.012	1.033	1.018	1.046	1.070	1.009	0.984	0.996
	Tuesday	0.983	0.949	0.965	0.979	0.988	0.992	0.989	1.031	0.971	0.983	0.987	0.981
	Wednesday	0.954	0.956	0.949	0.920	1.005	0.973	0.946	0.960	0.972	0.964	0.928	0.983
	Thursday	0.954	0.937	0.939	0.984	0.986	0.951	1.009	0.962	0.983	0.943	0.971	0.941
	Friday	0.867	0.882	0.894	0.945	0.889	0.911	0.888	0.864	0.830	0.901	0.917	0.896
	Saturday	1.078	1.111	1.083	0.981	0.990	1.015	1.017	1.005	1.040	1.036	1.097	1.037
050P81	Sunday	1.049	1.034		0.988	1.114	1.084	1.050	1.109	1.101	1.136	1.025	1.009
	Monday	1.019	1.049		1.023	0.956	0.986	0.985	1.057	1.080	1.078	0.913	1.035
	Tuesday	1.032	0.974		1.025	0.966	1.013	0.966	1.019	0.990	1.006	1.001	0.993
	Wednesday	0.993	0.993		1.028	1.016	0.939	1.050	0.962	0.983	0.941	0.935	1.022
	Thursday	1.010	1.046		0.936	1.035	1.040	1.016	0.980	1.007	0.969	1.085	1.034
	Friday	0.866	0.864		0.983	0.949	0.943	0.930	0.921	0.885	0.857	0.940	0.923
	Saturday	1.058	1.074		1.024	0.984	1.009	1.015	0.974	0.983	1.069	1.142	0.994
057P65	Sunday	1.561	1.445	1.419	1.356	1.326	1.291	1.257	1.279	1.295	1.368		
	Monday	0.935	0.974	0.987	0.985	0.995	0.990	0.976	0.997	1.026	1.020		
	Tuesday	0.968	0.934	0.938	0.953	0.936	0.955	0.950	0.979	0.958	0.947		
	Wednesday	0.939	0.941	0.932	0.937	0.943	0.963	0.940	0.966	0.958	0.949		
	Thursday	0.914	0.914	0.928	0.918	0.945	0.943	1.006	0.937	0.942	0.922		
	Friday	0.820	0.882	0.881	0.901	0.880	0.887	0.899	0.877	0.873	0.866		
	Saturday	1.137	1.087	1.075	1.073	1.089	1.061	1.043	1.052	1.044	1.063		
057P88	Sunday	1.243	1.177	1.220	1.202	1.227	1.209	1.137	1.168	1.131	1.157	1.126	1.174
	Monday	0.963	1.003	1.015	1.021	1.057	1.006	1.047	1.015	1.042	1.045	0.965	1.005

KYTC 2019 Daily Factors for Rural General		JAN	FEB	MAR	APR	MAY	JUN	JUL	AUG	SEP	OCT	NOV	DEC
	Tuesday	0.980	0.942	0.952	0.946	0.925	0.922	0.970	0.974	0.966	0.965	0.945	0.970
	Wednesday	0.982	0.949	0.913	0.940	0.931	0.935	0.955	0.950	0.957	0.987	0.952	1.034
	Thursday	0.949	0.952	0.955	0.930	0.948	0.957	0.983	0.954	0.951	0.974	1.047	0.946
	Friday	0.869	0.928	0.935	0.947	0.905	0.939	0.896	0.903	0.903	0.877	0.925	0.885
	Saturday	1.095	1.098	1.073	1.068	1.080	1.094	1.049	1.083	1.091	1.041	1.075	1.031
	Sunday	1.584	1.401	1.339	1.326	1.259	1.308	1.288	1.315	1.297	1.297	1.339	1.318
063P76	Monday	0.938	0.988	1.010	1.009	1.088	1.013	0.983	1.013	1.056	1.022	0.947	0.970
	Tuesday	1.005	0.959	0.960	0.973	0.987	0.960	0.966	0.973	0.959	0.953	0.960	1.027
	Wednesday	0.953	0.957	0.972	0.966	0.968	1.001	0.960	0.989	0.975	0.978	0.933	1.036
	Thursday	0.908	0.897	0.942	0.923	0.931	0.954	1.004	0.947	0.945	0.934	0.973	0.914
	Friday	0.792	0.855	0.861	0.869	0.856	0.849	0.878	0.842	0.836	0.843	0.865	0.839
	Saturday	1.118	1.108	1.032	1.043	1.003	1.019	1.005	1.031	1.042	1.085	1.110	1.015
064P77	Sunday	1.446	1.463	1.444	1.206	1.210							
	Monday	0.890	0.950	0.800	0.974	1.050							
	Tuesday	1.038	0.948	0.990	0.987	0.996							
	Wednesday	0.940	0.933	0.982	0.960	1.004							
	Thursday	0.927	0.882	0.951	0.903	0.963							
	Friday	0.817	0.861	0.922	0.905	0.753							
Saturday	1.170	1.186	1.119	1.142	1.170								
068P52	Sunday		1.367	1.327		1.188	1.136	1.121	1.177	1.171	1.183	1.234	1.146
	Monday		0.966	0.979		1.072	1.022	1.029	1.013	1.052	1.012	0.945	1.033
	Tuesday		0.955	0.949		1.002	1.008	1.015	1.015	0.995	1.008	0.978	0.977
	Wednesday		0.989	0.955		1.023	1.074	0.976	1.044	1.021	1.026	0.940	0.962
	Thursday		0.911	0.921		0.950	0.955	1.017	0.936	0.954	0.945	0.988	0.896
	Friday		0.828	0.863		0.826	0.833	0.876	0.828	0.837	0.815	0.860	0.890
Saturday		1.151	1.136		1.014	1.031	0.998	1.058	1.032	1.093	1.149	1.166	
071P38	Sunday	1.770	1.556	1.579	1.480	1.456		1.476	1.506	1.462	1.419	1.415	1.470
	Monday	0.941	0.949	0.978	0.960	1.029		0.968	0.963	1.019	1.021	0.951	0.956
	Tuesday	0.983	0.911	0.931	0.929	0.938		0.944	0.938	0.947	0.936	0.955	0.994
	Wednesday	0.914	0.949	0.921	0.938	0.948		0.942	0.963	0.969	0.956	0.905	1.001
	Thursday	0.862	0.882	0.904	0.906	0.916		0.885	0.905	0.919	0.949	0.949	0.895

KYTC 2019 Daily Factors for Rural General		JAN	FEB	MAR	APR	MAY	JUN	JUL	AUG	SEP	OCT	NOV	DEC
	Friday	0.788	0.826	0.824	0.885	0.825		0.850	0.850	0.843	0.836	0.858	0.803
	Saturday	1.202	1.238	1.156	1.102	1.091		1.162	1.097	1.027	1.051	1.148	1.105
073P57	Sunday	1.434	1.261	1.339	1.318	1.291	1.229	1.291	1.307		1.356	1.262	1.312
	Monday	0.954	0.984	0.947	0.969	0.981	0.951	0.997	0.939		1.045	0.923	0.936
	Tuesday	0.939	0.941	0.927	0.913	0.926	0.942	0.916	0.967		0.911	1.013	0.952
	Wednesday	0.934	0.920	0.931	0.919	0.978	0.978	0.932	0.933		0.933	0.922	1.008
	Thursday	0.901	0.917	0.954	1.016	0.968	0.938	0.963	0.961		0.916	0.955	0.934
	Friday	0.860	0.910	0.890	0.923	0.883	0.925	0.891	0.929		0.953	0.909	0.885
	Saturday	1.181	1.174	1.146	1.044	1.066	1.106	1.116	1.056		1.006	1.105	1.079
	Sunday	1.306	1.106	1.205	1.174	1.031	1.065	1.111	1.104	1.029	1.126	1.145	1.223
079P39	Monday	1.023	1.032	1.038	1.079	1.045	1.092	1.157	1.128	1.053	1.093	0.962	1.045
	Tuesday	0.973	0.956	0.994	1.008	1.072	1.038	1.064	1.120	1.030	0.992	1.035	1.008
	Wednesday	0.981	0.976	0.988	0.985	1.104	1.082	1.031	1.064	1.056	1.011	0.959	1.024
	Thursday	0.909	0.969	0.983	1.049	1.063	1.011	0.974	1.015	1.013	0.972	1.031	0.945
	Friday	0.836	0.932	0.872	0.893	0.875	0.897	0.869	0.872	0.914	0.890	0.917	0.867
	Saturday	1.095	1.052	0.976	0.876	0.869	0.867	0.871	0.804	0.926	0.954	0.982	0.957
	Sunday	1.307	1.268	1.302	1.251	1.207	1.154	1.211	1.161	1.160	1.176	1.193	1.189
081P89	Monday	0.933	0.972	1.013	0.999	1.030	1.030	0.976	1.005	1.056	1.020	0.958	0.998
	Tuesday	0.952	0.945	0.992	0.938	0.928	0.942	0.992	1.006	0.993	0.962	1.008	0.985
	Wednesday	0.982	0.950	0.947	0.940	0.963	1.053	0.981	0.985	0.996	0.985	0.928	1.021
	Thursday	0.983	0.918	0.974	0.943	1.001	0.923	1.036	0.940	0.965	1.001	1.022	0.941
	Friday	0.802	0.936	0.819	0.977	0.920	0.914	0.870	0.892	0.912	0.845	0.848	0.868
	Saturday	1.205	1.093	1.071	1.014	1.001	1.028	0.993	1.053	0.955	1.073	1.124	1.057
	Sunday	1.515	1.447	1.435	1.411	1.316	1.313	1.279	1.296	1.331	1.368	1.298	1.365
083P29	Monday	0.930	0.970	0.999	0.962	1.041	0.989	0.982	0.995	1.041	0.974	0.935	0.967
	Tuesday	0.963	0.921	0.921	0.938	0.951	0.963	0.939	0.955	0.943	0.922	0.940	0.977
	Wednesday	0.917	0.940	0.888	0.905	0.929	0.963	0.920	0.955	0.943	0.959	0.935	0.991
	Thursday	0.918	0.879	0.907	0.897	0.934	0.958	0.964	0.923	0.924	0.904	0.951	0.881
	Friday	0.807	0.886	0.893	0.913	0.868	0.871	0.871	0.880	0.860	0.867	0.890	0.847
	Saturday	1.239	1.159	1.151	1.148	1.077	1.044	1.159	1.099	1.085	1.168	1.173	1.130
	Sunday	1.548	1.478	1.411	1.361			1.221	1.299	1.323	1.337	1.337	1.346
084P25	Sunday	1.548	1.478	1.411	1.361			1.221	1.299	1.323	1.337	1.337	1.346

KYTC 2019 Daily Factors for Rural General		JAN	FEB	MAR	APR	MAY	JUN	JUL	AUG	SEP	OCT	NOV	DEC
	Monday	0.930	0.969	0.970	0.967			0.966	0.992	1.017	1.003	0.931	0.935
	Tuesday	0.985	0.953	0.931	0.946			0.953	1.010	0.955	0.947	0.944	1.006
	Wednesday	0.918	0.936	0.919	0.940			0.932	0.969	0.959	0.964	0.915	0.996
	Thursday	0.899	0.902	0.923	0.903			0.997	0.916	0.925	0.936	0.967	0.891
	Friday	0.809	0.798	0.865	0.906			0.901	0.850	0.855	0.848	0.877	0.852
	Saturday	1.210	1.232	1.166	1.111			1.098	1.073	1.088	1.095	1.174	1.120
089P40	Sunday	1.327	1.232	1.143	1.075	1.156	1.129	1.005	1.098	1.108	1.032	1.165	1.080
	Monday	0.982	1.014	1.053	1.051	1.041	1.050	1.037	1.070	1.023	1.058	1.036	1.035
	Tuesday	0.986	0.968	1.021	1.043	1.027	1.041	1.031	1.050	1.036	1.050	1.011	1.083
	Wednesday	0.957	0.938	0.992	1.002	1.012	0.992	0.954	1.002	1.027	1.029	0.901	1.032
	Thursday	0.885	0.909	0.937	0.944	0.934	0.917	1.019	0.942	0.947	0.962	0.966	0.916
	Friday	0.803	0.840	0.811	0.831	0.800	0.825	0.873	0.816	0.814	0.825	0.858	0.840
	Saturday	1.259	1.232	1.125	1.113	1.120	1.123	1.118	1.091	1.114	1.099	1.141	1.072
090P54	Sunday	1.167	1.058	1.020	0.977	0.995	1.014	0.951	1.007	0.964		1.029	0.983
	Monday	1.020	1.055	1.148	1.122	1.084	1.079	1.093	1.095	1.091		1.096	1.092
	Tuesday	1.011	1.042	1.122	1.113	1.122	1.091	1.099	1.146	1.139		1.066	1.165
	Wednesday	1.049	1.063	1.024	1.059	1.089	1.067	1.027	1.078	1.108		0.983	1.090
	Thursday	0.963	0.969	0.947	0.964	0.986	0.983	1.049	0.993	1.018		1.035	0.974
	Friday	0.807	0.827	0.812	0.822	0.806	0.829	0.840	0.813	0.815		0.835	0.846
	Saturday	1.061	1.034	1.008	1.013	0.992	0.991	0.994	0.946	0.946		1.004	0.923
092P36	Sunday	1.262	1.162	1.234	1.126	1.046	0.977	0.953	0.969	0.974	1.067	0.967	1.124
	Monday	0.994	1.040	1.018	1.030	0.928	1.116	1.102	1.127	1.075	1.020	1.020	1.038
	Tuesday	0.974	0.974	1.002	1.012	1.077	1.031	1.086	1.133	1.083	1.007	1.117	1.058
	Wednesday	1.014	0.986	0.954	0.984	1.105	1.060	1.049	1.075	1.093	1.055	1.053	1.018
	Thursday	0.986	1.001	0.986	1.015	1.122	1.032	1.053	1.071	1.070	1.019	1.022	0.979
	Friday	0.829	0.870	0.874	0.940	0.906	0.905	0.892	0.855	0.902	0.883	0.916	0.875
	Saturday	1.031	1.013	0.998	0.920	0.878	0.914	0.910	0.859	0.860	0.973	0.935	0.947
094P55	Sunday	1.555	1.507	1.363	1.345	1.241	1.241	1.191	1.195	1.197	1.224	1.217	1.268
	Monday	1.023	1.006	1.024	1.011	1.062	1.037	1.041	1.082	1.067	1.040	0.993	0.999
	Tuesday	0.954	0.955	0.941	0.940	0.959	0.939	1.019	1.067	1.002	0.976	0.959	1.058
	Wednesday	0.888	0.912	0.922	0.953	0.976	0.993	0.952	1.039	0.976	0.993	0.934	0.996

KYTC 2019 Daily Factors for Rural General		JAN	FEB	MAR	APR	MAY	JUN	JUL	AUG	SEP	OCT	NOV	DEC
	Thursday	0.899	0.886	0.945	0.939	0.962	0.957	1.028	0.935	0.935	0.948	1.003	0.921
	Friday	0.790	0.849	0.866	0.875	0.848	0.880	0.876	0.835	0.863	0.852	0.874	0.843
	Saturday	1.211	1.121	1.076	1.056	1.034	1.024	0.947	0.933	1.025	1.040	1.091	1.010
095P73	Sunday	1.836	1.659	1.653	1.627	1.539	1.531	1.511	1.548	1.541	1.563	1.547	1.565
	Monday	0.900	0.899	0.948	0.908	1.004	0.933	0.913	0.936	1.012	0.967	0.894	0.892
	Tuesday	0.978	0.915	0.901	0.917	0.924	0.949	0.925	0.952	0.895	0.906	0.923	0.949
	Wednesday	0.888	0.952	0.917	0.906	0.904	0.947	0.906	0.944	0.918	0.927	0.907	1.012
	Thursday	0.859	0.859	0.899	0.892	0.898	0.920	0.976	0.891	0.906	0.896	0.978	0.872
	Friday	0.790	0.815	0.833	0.879	0.817	0.839	0.869	0.827	0.839	0.842	0.816	0.834
	Saturday	1.305	1.332	1.210	1.205	1.207	1.129	1.135	1.183	1.161	1.190	1.248	1.171
096P27	Sunday	1.376	1.202	1.225	1.183	1.179	1.184	1.105	1.114	1.132	1.155	1.148	1.214
	Monday	0.966	0.999	1.028	1.038	1.032	1.049	1.034	1.037	1.059	1.074	1.010	1.018
	Tuesday	1.001	0.971	0.986	0.981	0.959	0.992	0.994	1.041	1.016	1.018	0.984	0.991
	Wednesday	0.982	1.028	0.933	0.977	0.995	0.980	0.991	1.025	1.018	1.042	0.955	1.006
	Thursday	0.952	0.938	0.976	0.948	1.001	0.977	1.025	0.962	0.963	0.975	1.006	0.961
	Friday	0.796	0.910	0.910	0.931	0.899	0.872	0.901	0.884	0.879	0.851	0.895	0.886
	Saturday	1.093	1.001	0.998	0.982	0.977	0.996	0.973	0.970	0.971	0.943	1.037	0.979
098P70	Sunday	1.701	1.586	1.528	1.587	1.491	1.440	1.406	1.512	1.536	1.548	1.477	1.429
	Monday	0.909	0.939	0.938	0.947	1.003	0.942	0.928	0.945	0.999	0.943	0.906	0.907
	Tuesday	1.011	0.904	0.939	0.934	0.943	0.953	0.947	0.942	0.915	0.918	0.957	0.999
	Wednesday	0.919	0.936	0.947	0.909	0.928	0.938	0.918	0.952	0.939	0.940	0.908	1.064
	Thursday	0.915	0.901	0.902	0.889	0.904	0.943	0.993	0.926	0.911	0.924	0.968	0.873
	Friday	0.783	0.843	0.856	0.879	0.819	0.854	0.859	0.831	0.811	0.816	0.819	0.821
	Saturday	1.157	1.201	1.135	1.137	1.151	1.115	1.117	1.129	1.164	1.199	1.221	1.119
100P32	Sunday	1.451	1.330	1.303	1.298		1.222	1.170					
	Monday	0.935	0.983	0.999	0.974		1.004	1.025					
	Tuesday	1.000	0.960	0.985	0.993		1.020	1.013					
	Wednesday	0.947	0.975	0.983	0.979		1.021	0.982					
	Thursday	0.932	0.898	0.944	0.939		0.947	1.028					
	Friday	0.835	0.893	0.872	0.902		0.873	0.867					
	Saturday	1.094	1.074	1.007	1.001		0.976	0.963					

KYTC 2019 Daily Factors for Rural General		JAN	FEB	MAR	APR	MAY	JUN	JUL	AUG	SEP	OCT	NOV	DEC
104P33	Sunday	1.229	0.752	1.034	1.116	0.967	0.897	0.865	0.899	0.839	1.007	1.033	1.182
	Monday	1.006	1.065	1.138	1.153	0.998	1.148	1.201	1.203	1.080	1.202	1.026	1.103
	Tuesday	0.971	1.102	1.084	1.074	1.177	1.196	1.272	1.435	1.281	1.108	1.079	1.172
	Wednesday	0.949	1.057	1.005	1.063	1.170	1.198	1.153	1.356	1.270	1.140	0.999	1.078
	Thursday	0.953	1.112	1.019	0.984	1.107	1.025	1.020	1.019	1.027	1.042	0.970	0.905
	Friday	0.847	1.069	0.918	0.881	0.848	0.855	0.835	0.745	0.890	0.805	0.881	0.841
	Saturday	1.137	0.959	0.857	0.824	0.850	0.834	0.848	0.770	0.821	0.837	1.037	0.853
106P19	Sunday	1.422	1.328	1.338	1.322	1.316	1.304	1.247	1.221	1.317	1.341	1.247	1.326
	Monday	0.911	0.933	0.965	0.942	1.017	0.991	0.964	0.973	1.035	0.952	0.926	0.972
	Tuesday	0.944	0.957	0.931	0.907	0.919	0.959	0.935	0.981	0.928	0.938	0.960	0.954
	Wednesday	0.967	0.924	0.878	0.928	0.935	0.977	0.922	0.944	0.931	0.952	0.902	1.040
	Thursday	0.946	0.928	0.976	0.951	0.958	0.949	1.007	0.923	0.910	0.942	1.048	0.902
	Friday	0.833	0.894	0.919	0.920	0.876	0.866	0.932	0.915	0.899	0.875	0.890	0.881
	Saturday	1.178	1.174	1.123	1.159	1.094	1.055	1.064	1.114	1.096	1.133	1.123	1.037
112P28	Sunday		1.629	1.523	1.459	1.406	1.388	1.311	1.234	1.313	1.361	1.336	1.485
	Monday		0.930	0.946	0.907	1.041	0.923	0.984	0.968	1.093	0.733	0.878	0.924
	Tuesday		0.904	0.961	0.861	0.944	0.924	0.939	0.973	0.925	0.996	0.960	0.939
	Wednesday		0.893	0.913	0.934	0.910	0.979	0.878	0.886	0.906	1.003	0.919	0.963
	Thursday		0.897	0.820	0.930	0.935	0.920	0.997	0.939	0.905	0.963	0.974	0.868
	Friday		0.849	0.883	0.954	0.844	0.878	0.901	0.884	0.897	0.928	0.885	0.864
	Saturday		1.260	1.250	1.169	1.092	1.153	1.106	1.243	1.088	1.276	1.210	1.203
113P15	Sunday		1.465	1.483				1.239	1.292	1.293	1.304	1.233	1.300
	Monday		0.948	0.961				1.023	0.956	1.031	1.022	0.938	0.932
	Tuesday		0.928	0.956				0.967	1.012	0.955	0.971	0.968	0.977
	Wednesday		0.892	0.912				0.913	0.945	0.938	0.953	0.889	0.987
	Thursday		0.888	0.926				0.984	0.942	0.915	0.917	0.987	0.931
	Friday		0.964	0.883				0.883	0.882	0.893	0.853	0.925	0.889
	Saturday		1.110	1.076				1.067	1.064	1.075	1.097	1.149	1.084
114P69	Sunday	1.345	1.318	1.182	1.215	1.164	1.000	0.996	1.179	1.240	1.283	1.236	1.208
	Monday	0.997	1.012	1.009	0.986	1.036	1.060	1.049	1.045	0.981	1.034	0.980	1.023
	Tuesday	0.949	0.965	0.981	0.974	0.930	1.033	1.054	0.993	0.945	0.960	0.983	0.972

KYTC 2019 Daily Factors for Rural General		JAN	FEB	MAR	APR	MAY	JUN	JUL	AUG	SEP	OCT	NOV	DEC	
119P06	Wednesday	0.975	0.980	1.016	0.953	0.995	0.986	1.028	1.008	1.058	1.016	0.958	1.038	
	Thursday	0.922	0.900	0.996	0.944	0.979	1.029	1.048	1.027	0.982	0.982	0.999	0.964	
	Friday	0.875	0.832	0.898	0.948	0.912	0.866	0.812	0.874	0.881	0.847	0.890	0.880	
	Saturday	1.056	1.130	0.960	1.027	1.024	1.055	1.070	0.927	0.983	0.972	1.015	0.973	
	Sunday	1.317	1.207	1.231	1.317	1.330							1.240	
	Monday	0.918	0.984	1.032	0.979	0.977								0.929
	Tuesday	0.985	0.934	0.916	0.969	0.936								0.937
120P53	Wednesday	0.956	1.010	0.956	0.921	0.932							1.016	
	Thursday	0.970	0.913	0.962	0.865	0.974							0.936	
	Friday	0.882	0.952	0.948	1.015	0.882								0.966
	Saturday	1.081	1.054	1.013	1.041	1.084								1.039
	Sunday	1.428	1.318	1.261	1.243		1.193	1.136	1.185	1.165	1.123	1.202		
	Monday	0.948	0.985	1.024	1.033		1.008	1.002	1.025	1.035	1.054	1.008		
	Tuesday	0.977	0.935	0.984	0.988		0.985	0.984	1.027	1.008	1.015	0.975		
120P60	Wednesday	0.950	0.963	0.947	0.989		0.980	0.963	0.977	1.002	1.018	0.947		
	Thursday	0.910	0.926	0.921	0.940		0.939	1.021	0.954	0.950	0.965	0.997		
	Friday	0.820	0.855	0.863	0.840		0.858	0.879	0.855	0.851	0.831	0.859		
	Saturday	1.176	1.150	1.093	1.052		1.105	1.052	1.036	1.042	1.048	1.079		
	Sunday	1.555	1.496		1.347	1.254	1.343	1.345	1.363	1.341	1.294	1.364	1.310	
	Monday	0.950	0.989		1.020	1.058	0.995	0.962	0.985	1.067	1.045	0.957	0.972	
	Tuesday	0.961	0.918		0.958	0.948	0.952	0.932	0.949	0.966	0.984	0.891	1.035	
D Factor	Wednesday	0.934	0.923		0.939	0.950	0.939	0.913	0.930	0.951	0.971	0.902	0.984	
	Thursday	0.888	0.898		0.913	0.925	0.916	0.981	0.922	0.906	0.930	1.028	0.900	
	Friday	0.825	0.879		0.877	0.891	0.876	0.910	0.881	0.864	0.866	0.934	0.868	
	Saturday	1.169	1.114		1.071	1.056	1.109	1.074	1.108	1.032	1.007	1.055	1.038	
	Sunday	1.450	1.348	1.327	1.282	1.242	1.218	1.196	1.236	1.226	1.269	1.236	1.266	
	Monday	0.949	0.976	0.995	0.999	1.025	1.008	1.007	1.016	1.044	1.014	0.958	0.979	
D Factor	Tuesday	0.982	0.946	0.963	0.967	0.977	0.985	0.989	1.021	0.983	0.972	0.979	1.007	
	Wednesday	0.950	0.954	0.942	0.952	0.982	0.998	0.960	0.991	0.992	0.985	0.937	1.020	
	Thursday	0.924	0.920	0.938	0.939	0.970	0.962	1.005	0.952	0.954	0.947	0.996	0.922	
	Friday	0.818	0.883	0.883	0.911	0.863	0.877	0.881	0.861	0.865	0.859	0.884	0.865	

KYTC 2019 Daily Factors for Rural General		JAN	FEB	MAR	APR	MAY	JUN	JUL	AUG	SEP	OCT	NOV	DEC
SD	Saturday	1.160	1.136	1.090	1.058	1.042	1.038	1.042	1.031	1.037	1.068	1.112	1.049
	Sunday	0.167	0.176	0.141	0.140	0.134	0.134	0.141	0.144	0.154	0.137	0.137	0.125
	Monday	0.040	0.041	0.055	0.048	0.038	0.049	0.059	0.057	0.032	0.066	0.044	0.049
	Tuesday	0.035	0.035	0.043	0.048	0.057	0.052	0.063	0.084	0.069	0.042	0.052	0.053
	Wednesday	0.033	0.037	0.037	0.037	0.059	0.055	0.051	0.076	0.068	0.044	0.037	0.032
	Thursday	0.034	0.048	0.036	0.041	0.051	0.042	0.031	0.039	0.042	0.033	0.034	0.036
	Friday	0.028	0.049	0.045	0.056	0.037	0.028	0.026	0.038	0.029	0.031	0.032	0.030
Saturday	0.079	0.080	0.080	0.083	0.085	0.080	0.078	0.100	0.084	0.082	0.072	0.076	
DF		41	44	40	41	40	38	41	39	38	38	38	39
t-value at 95%		2.020	2.015	2.021	2.020	2.021	2.024	2.020	2.023	2.024	2.024	2.024	2.023
CI	Sunday	0.052	0.053	0.044	0.044	0.042	0.044	0.044	0.046	0.050	0.044	0.044	0.040
	Monday	0.012	0.012	0.017	0.015	0.012	0.016	0.018	0.018	0.010	0.021	0.014	0.016
	Tuesday	0.011	0.011	0.014	0.015	0.018	0.017	0.020	0.027	0.022	0.014	0.017	0.017
	Wednesday	0.010	0.011	0.012	0.012	0.019	0.018	0.016	0.024	0.022	0.014	0.012	0.010
	Thursday	0.011	0.015	0.011	0.013	0.016	0.013	0.010	0.012	0.014	0.011	0.011	0.011
	Friday	0.009	0.015	0.014	0.018	0.012	0.009	0.008	0.012	0.010	0.010	0.011	0.010
	Saturday	0.025	0.024	0.025	0.026	0.027	0.026	0.024	0.032	0.027	0.027	0.023	0.024
D Factor High	Sunday	1.502	1.401	1.371	1.326	1.284	1.262	1.240	1.282	1.276	1.313	1.280	1.306
D Factor Low	Sunday	1.398	1.295	1.283	1.238	1.200	1.174	1.152	1.190	1.176	1.225	1.192	1.226
D Factor High	Monday	0.961	0.988	1.012	1.014	1.037	1.024	1.025	1.034	1.054	1.035	0.972	0.995
D Factor Low	Monday	0.937	0.964	0.978	0.984	1.013	0.992	0.989	0.998	1.034	0.993	0.944	0.963
D Factor High	Tuesday	1.017	0.981	1.006	1.015	1.034	1.037	1.052	1.105	1.052	1.014	1.031	1.060
D Factor Low	Tuesday	0.971	0.935	0.949	0.952	0.959	0.968	0.969	0.994	0.961	0.958	0.962	0.990
D Factor High	Wednesday	0.960	0.965	0.954	0.964	1.001	1.016	0.976	1.015	1.014	0.999	0.949	1.030
D Factor Low	Wednesday	0.940	0.943	0.930	0.940	0.963	0.980	0.944	0.967	0.970	0.971	0.925	1.010
D Factor High	Thursday	0.935	0.935	0.949	0.952	0.986	0.975	1.015	0.964	0.968	0.958	1.007	0.933
D Factor Low	Thursday	0.913	0.905	0.927	0.926	0.954	0.949	0.995	0.940	0.940	0.936	0.985	0.911
D Factor High	Friday	0.827	0.898	0.897	0.929	0.875	0.886	0.889	0.873	0.875	0.869	0.895	0.875
D Factor Low	Friday	0.809	0.868	0.869	0.893	0.851	0.868	0.873	0.849	0.855	0.849	0.873	0.855
D Factor High	Saturday	1.185	1.160	1.115	1.084	1.069	1.064	1.066	1.063	1.064	1.095	1.135	1.073
D Factor Low	Saturday	1.135	1.112	1.065	1.032	1.015	1.012	1.018	0.999	1.010	1.041	1.089	1.025

Table B-7 KYTC 2019 Daily Factors for Urban General

KYTC 2019 Daily Factors for Urban General		JAN	FEB	MAR	APR	MAY	JUN	JUL	AUG	SEP	OCT	NOV	DEC
D Factors	Sunday	1.472 (25)	1.391 (26)	1.398 (25)	1.367 (23)	1.322 (24)	1.297 (24)	1.287 (27)	1.317 (26)	1.329 (24)	1.326 (25)	1.300 (26)	1.318 (26)
	Monday	0.937 (25)	0.969 (26)	0.971 (25)	0.970 (23)	1.024 (24)	0.974 (24)	0.969 (27)	0.977 (26)	1.031 (24)	0.988 (25)	0.930 (26)	0.949 (26)
	Tuesday	0.987 (25)	0.937 (26)	0.944 (25)	0.943 (23)	0.946 (24)	0.955 (24)	0.955 (27)	0.979 (26)	0.944 (24)	0.947 (25)	0.943 (26)	0.980 (26)
	Wednesday	0.938 (25)	0.935 (26)	0.929 (25)	0.935 (23)	0.949 (24)	0.963 (24)	0.930 (27)	0.947 (26)	0.944 (24)	0.955 (25)	0.913 (26)	1.030 (26)
	Thursday	0.916 (25)	0.910 (26)	0.933 (25)	0.925 (23)	0.934 (24)	0.940 (24)	0.981 (27)	0.931 (26)	0.922 (24)	0.931 (25)	0.999 (26)	0.910 (26)
	Friday	0.825 (25)	0.886 (26)	0.875 (25)	0.900 (23)	0.862 (24)	0.890 (24)	0.891 (27)	0.870 (26)	0.860 (24)	0.871 (25)	0.895 (26)	0.861 (26)
	Saturday	1.182 (25)	1.164 (26)	1.134 (25)	1.115 (23)	1.105 (24)	1.097 (24)	1.103 (27)	1.116 (26)	1.122 (24)	1.130 (25)	1.170 (26)	1.088 (26)
005P71	Sunday	1.566	1.405	1.377	1.348	1.343	1.311	1.261	1.333	1.328	1.270	1.362	1.327
	Monday	0.917	0.951	0.963	0.960	1.005	0.964	0.974	0.994	1.003	1.016	0.932	0.963
	Tuesday	0.987	0.945	0.954	0.962	0.956	0.978	0.966	0.991	0.976	0.979	0.972	1.025
	Wednesday	0.957	0.970	0.951	0.960	0.976	0.975	0.935	0.983	0.985	0.988	0.934	1.045
	Thursday	0.908	0.911	0.943	0.920	0.935	0.934	0.992	0.924	0.927	0.945	0.958	0.907
	Friday	0.813	0.860	0.838	0.860	0.832	0.850	0.863	0.830	0.834	0.839	0.859	0.842
	Saturday	1.135	1.126	1.133	1.130	1.089	1.105	1.102	1.076	1.072	1.058	1.129	1.016
010I01	Sunday	1.743	1.612	1.576	1.614			1.429	1.462	1.450	1.484	1.470	
	Monday	0.878	0.914	0.928	0.905			0.906	0.928	0.971	0.956	0.847	
	Tuesday	0.954	0.886	0.895	0.892			0.889	0.927	0.908	0.890	0.871	
	Wednesday	0.874	0.899	0.885	0.887			0.869	0.899	0.892	0.907	0.860	
	Thursday	0.856	0.850	0.867	0.861			0.963	0.867	0.874	0.881	0.983	
	Friday	0.837	0.907	0.920	0.931			0.917	0.902	0.892	0.877	0.935	
	Saturday	1.366	1.305	1.248	1.263			1.261	1.273	1.262	1.285	1.350	
011P66	Sunday	1.539	1.486	1.423	1.417	1.344	1.349	1.284	1.336	1.356	1.391	1.375	1.373
	Monday	0.926	0.952	0.966	0.967	1.025	0.971	0.952	0.992	1.012	0.985	0.917	0.925
	Tuesday	0.992	0.941	0.944	0.952	0.956	0.968	0.961	0.992	0.960	0.952	0.940	1.004
	Wednesday	0.936	0.923	0.930	0.942	0.951	0.961	0.929	0.969	0.958	0.955	0.911	1.055

KYTC 2019 Daily Factors for Urban General		JAN	FEB	MAR	APR	MAY	JUN	JUL	AUG	SEP	OCT	NOV	DEC
	Thursday	0.922	0.883	0.929	0.907	0.938	0.921	0.985	0.915	0.913	0.915	1.003	0.869
	Friday	0.797	0.870	0.856	0.883	0.851	0.859	0.889	0.839	0.844	0.839	0.848	0.842
	Saturday	1.169	1.178	1.133	1.095	1.061	1.107	1.093	1.087	1.101	1.132	1.182	1.101
017P62	Sunday	1.261	1.222	1.332		1.249	1.183	1.231	1.226	1.189	1.223	1.138	1.292
	Monday	0.994	0.960	0.943		0.992	0.953	0.994	0.976	1.019	1.011	0.923	0.983
	Tuesday	1.004	0.972	0.979		0.957	0.980	1.040	1.028	0.980	0.971	0.949	0.963
	Wednesday	0.960	0.948	0.899		1.014	1.003	0.989	0.968	0.996	1.023	0.980	0.995
	Thursday	0.936	0.957	0.954		0.958	1.008	1.000	0.955	0.951	0.961	1.106	0.929
	Friday	0.855	0.862	0.900		0.842	0.852	0.805	0.836	0.878	0.872	0.877	0.871
	Saturday	1.080	1.177	1.117		1.078	1.085	1.037	1.098	1.039	1.002	1.089	1.064
024P61	Sunday	1.517	1.356	1.756				1.178	1.274	1.302	1.228	1.238	1.197
	Monday	0.971	0.966	1.003				1.058	0.998	1.026	1.002	0.949	0.996
	Tuesday	0.959	0.960	0.977				1.033	0.997	0.973	0.977	1.002	1.078
	Wednesday	0.939	0.947	0.935				1.015	0.982	0.973	1.007	0.888	1.093
	Thursday	0.872	0.879	0.895				0.944	0.933	0.919	0.946	1.015	0.884
	Friday	0.813	0.872	0.799				0.828	0.826	0.823	0.852	0.873	0.818
	Saturday	1.210	1.183	1.028				1.013	1.099	1.113	1.063	1.131	1.038
030P17	Sunday	1.380	1.480	1.434	1.385	1.333	1.336	1.311					
	Monday	0.935	0.943	0.960	0.959	1.019	0.963	0.939					
	Tuesday	1.132	0.919	0.930	0.935	0.957	0.944	0.926					
	Wednesday	0.892	0.901	0.924	0.937	0.963	0.955	0.908					
	Thursday	0.865	0.883	0.927	0.936	0.911	0.909	1.021					
	Friday	0.851	0.940	0.869	0.897	0.863	0.901	0.901					
	Saturday	1.148	1.150	1.144	1.093	1.076	1.115	1.110					
034P75	Sunday										1.379	1.378	1.384
	Monday										0.989	0.933	0.940

KYTC 2019 Daily Factors for Urban General		JAN	FEB	MAR	APR	MAY	JUN	JUL	AUG	SEP	OCT	NOV	DEC
	Tuesday										0.939	0.908	0.987
	Wednesday										0.938	0.902	0.996
	Thursday										0.925	0.992	0.898
	Friday										0.876	0.900	0.860
	Saturday										1.100	1.144	1.086
036P43	Sunday	1.441	1.152			1.126	1.163	1.141	1.220	1.210	1.276	1.191	1.278
	Monday	0.887	0.934			1.072	0.967	0.960	0.977	1.045	0.962	0.915	0.916
	Tuesday	0.975	0.983			0.903	0.967	0.950	0.957	0.924	0.914	0.957	0.962
	Wednesday	0.877	0.941			0.979	0.957	0.927	0.898	0.902	0.894	0.894	1.036
	Thursday	0.927	0.922			0.943	0.953	0.977	0.928	0.916	0.919	0.973	0.881
	Friday	0.819	0.886			0.847	0.892	0.903	0.877	0.874	0.875	0.869	0.824
	Saturday	1.401	1.303			1.234	1.168	1.222	1.282	1.266	1.363	1.375	1.296
036P56	Sunday	1.560	1.387	1.364	1.321	1.336	1.239	1.238	1.344	1.295	1.300	1.349	1.334
	Monday	0.894	0.971	0.989	0.967	1.052	0.962	0.957	0.956	1.033	1.001	0.908	0.977
	Tuesday	1.020	0.935	0.943	0.939	0.959	0.954	0.994	0.971	0.966	0.954	0.981	1.012
	Wednesday	0.901	0.951	0.948	0.943	0.967	0.996	0.963	0.967	0.967	0.954	0.943	1.046
	Thursday	0.936	0.903	0.909	0.929	0.924	0.965	1.005	0.944	0.937	0.964	0.949	0.906
	Friday	0.810	0.866	0.858	0.891	0.833	0.896	0.877	0.835	0.822	0.838	0.843	0.803
	Saturday	1.180	1.155	1.143	1.131	1.063	1.053	1.034	1.123	1.102	1.107	1.194	1.071
037P03	Sunday	1.515	1.493	1.461	1.401	1.390	1.321	1.322	1.350	1.396	1.417	1.265	1.372
	Monday	0.931	0.949	0.955	0.937	0.985	0.966	0.947	0.944	1.017	0.963	0.804	0.933
	Tuesday	0.934	0.914	0.903	0.906	0.932	0.929	0.926	0.966	0.920	0.914	0.812	0.982
	Wednesday	0.903	0.899	0.892	0.922	0.901	0.943	0.911	0.905	0.925	0.912	0.845	0.999
	Thursday	0.924	0.882	0.921	0.911	0.908	0.923	0.977	0.912	0.901	0.916	1.047	0.899
	Friday	0.831	0.892	0.879	0.903	0.856	0.892	0.901	0.884	0.852	0.872	1.164	0.862
	Saturday	1.245	1.226	1.224	1.210	1.232	1.153	1.141	1.201	1.181	1.209	1.357	1.101
047P07	Sunday	1.307	1.234	1.201	1.196	1.162	1.129	1.097	1.146	1.189	1.198	1.156	1.216
	Monday	1.009	1.040	1.043	1.038	1.067	1.051	1.036	1.049	1.072	1.054	0.998	1.001
	Tuesday	1.047	1.016	1.020	1.006	1.027	1.013	1.013	1.044	1.017	1.013	1.007	0.993

KYTC 2019 Daily Factors for Urban General		JAN	FEB	MAR	APR	MAY	JUN	JUL	AUG	SEP	OCT	NOV	DEC
	Wednesday	1.007	0.990	0.994	0.993	1.010	1.020	0.981	1.003	0.999	0.999	0.954	1.088
	Thursday	0.881	0.949	0.978	0.974	0.978	0.986	1.011	0.957	0.971	0.960	1.046	0.948
	Friday	0.860	0.896	0.868	0.888	0.880	0.890	0.924	0.892	0.868	0.866	0.882	0.879
	Saturday	1.002	0.940	0.954	0.956	0.926	0.945	0.957	0.951	0.943	0.969	0.998	0.944
048P18	Sunday	1.500	1.443	1.338	1.360	1.295	1.262	1.309	1.332	1.282	1.301	1.291	1.261
	Monday	0.902	0.949	0.968	0.965	1.022	0.959	0.935	0.975	1.025	0.987	0.941	0.970
	Tuesday	0.974	0.926	0.934	0.944	0.975	0.964	0.955	0.969	0.936	0.944	0.967	0.968
	Wednesday	0.927	0.938	0.962	0.936	0.962	0.983	0.924	0.963	0.962	0.967	0.943	1.047
	Thursday	0.946	0.898	0.919	0.892	0.910	0.940	0.976	0.922	0.923	0.907	0.942	0.908
	Friday	0.832	0.876	0.877	0.913	0.847	0.893	0.902	0.852	0.861	0.863	0.864	0.867
	Saturday	1.161	1.176	1.134	1.131	1.107	1.079	1.106	1.117	1.122	1.158	1.177	1.071
049P85	Sunday	1.523	1.393	1.433	1.379	1.357	1.313	1.333	1.349	1.360	1.366	1.312	1.353
	Monday	0.924	0.958	0.964	0.967	1.012	0.971	0.960	0.965	1.008	0.963	0.919	0.929
	Tuesday	0.964	0.915	0.911	0.926	0.920	0.938	0.942	0.946	0.927	0.928	0.907	0.945
	Wednesday	0.910	0.918	0.889	0.910	0.917	0.956	0.924	0.940	0.928	0.955	0.925	0.989
	Thursday	0.916	0.910	0.918	0.915	0.940	0.957	0.989	0.937	0.927	0.910	0.974	0.922
	Friday	0.815	0.885	0.906	0.919	0.883	0.900	0.884	0.888	0.876	0.879	0.909	0.889
	Saturday	1.241	1.209	1.178	1.135	1.111	1.062	1.084	1.101	1.116	1.152	1.190	1.105
051P58	Sunday	1.486	1.346	1.318	1.299	1.260	1.252	1.187	1.253	1.270	1.256	1.293	1.267
	Monday	0.965	0.989	1.017	1.006	1.090	1.019	1.016	1.033	1.042	1.019	0.998	0.986
	Tuesday	0.984	0.967	0.993	0.980	0.978	0.996	0.985	1.007	0.980	0.983	0.994	1.023
	Wednesday	0.941	0.940	0.968	0.962	0.966	0.973	0.941	0.973	0.959	0.975	0.914	1.042
	Thursday	0.892	0.919	0.959	0.937	0.927	0.931	1.010	0.952	0.933	0.943	0.991	0.926
	Friday	0.819	0.900	0.841	0.866	0.838	0.861	0.874	0.843	0.854	0.845	0.858	0.844
	Saturday	1.150	1.055	1.014	1.048	1.043	1.050	1.041	1.025	1.056	1.069	1.053	1.005
054P59	Sunday	1.722	1.645	1.666	1.585	1.563	1.567	1.515	1.554	1.518	1.524	1.488	1.511
	Monday	0.908	0.905	0.911	0.907	1.004	0.921	0.909	0.912	1.009	0.925	0.875	0.881
	Tuesday	0.937	0.879	0.882	0.881	0.875	0.887	0.881	0.924	0.901	0.891	0.906	0.949
	Wednesday	0.901	0.879	0.866	0.879	0.888	0.902	0.858	0.896	0.908	0.898	0.867	0.982
	Thursday	0.850	0.870	0.896	0.901	0.878	0.883	0.953	0.890	0.889	0.884	0.960	0.876
	Friday	0.809	0.880	0.864	0.901	0.848	0.877	0.899	0.863	0.855	0.870	0.884	0.859

KYTC 2019 Daily Factors for Urban General		JAN	FEB	MAR	APR	MAY	JUN	JUL	AUG	SEP	OCT	NOV	DEC
	Saturday	1.376	1.376	1.353	1.293	1.284	1.302	1.286	1.284	1.184	1.341	1.327	1.213
056P14	Sunday	1.247	1.157	1.180	1.150	1.174	1.172	1.152	1.163	1.155	1.140	1.126	1.153
	Monday	0.981	1.025	1.001	1.006	1.049	1.013	1.010	1.029	1.059	1.029	0.987	1.001
	Tuesday	0.995	0.976	0.985	0.974	0.973	0.974	0.966	0.990	0.977	0.983	0.988	0.974
	Wednesday	1.000	0.957	0.974	0.968	0.967	0.985	0.964	0.962	0.978	0.990	0.954	1.028
	Thursday	0.961	0.980	0.998	0.993	0.961	0.965	1.003	0.958	0.966	0.966	1.006	0.963
	Friday	0.864	0.915	0.889	0.922	0.891	0.911	0.918	0.905	0.895	0.902	0.919	0.905
	Saturday	1.026	1.023	1.017	1.014	1.030	1.017	1.018	1.031	1.008	1.021	1.046	1.008
056P21	Sunday	1.242	1.221	1.200	1.199	1.187	1.189	1.127	1.151	1.154	1.257	1.207	1.184
	Monday	1.013	1.056	1.030	1.026	1.026	1.026	1.039	1.045	1.061	1.040	1.024	0.976
	Tuesday	1.002	0.994	0.991	0.979	0.978	0.974	0.988	1.012	0.994	0.973	1.010	0.983
	Wednesday	0.996	0.964	0.959	0.964	0.977	0.984	0.969	0.972	0.968	0.972	0.974	1.116
	Thursday	0.966	0.935	0.947	0.963	0.947	0.966	1.016	0.951	0.949	0.938	0.954	0.935
	Friday	0.853	0.886	0.884	0.915	0.896	0.911	0.906	0.888	0.880	0.872	0.869	0.864
	Saturday	1.003	1.007	1.045	0.999	1.036	0.991	0.982	1.020	1.041	1.027	1.022	1.008
056P80	Sunday		1.284	1.326	1.289	1.277	1.271	1.251	1.265	1.262	1.290	1.251	1.275
	Monday		0.992	0.983	0.974	1.028	0.990	0.973	0.996	1.037	0.996	0.951	0.968
	Tuesday		0.975	0.964	0.951	0.952	0.954	0.942	0.982	0.958	0.947	0.944	0.974
	Wednesday		0.946	0.930	0.933	0.960	0.948	0.927	0.929	0.940	0.942	0.917	1.008
	Thursday		0.932	0.949	0.942	0.946	0.943	1.001	0.933	0.925	0.931	1.003	0.925
	Friday		0.890	0.870	0.907	0.879	0.898	0.913	0.900	0.886	0.896	0.901	0.878
	Saturday		1.070	1.096	1.098	1.045	1.079	1.066	1.079	1.080	1.096	1.121	1.060
056P84	Sunday	1.303	1.235	1.247	1.234	1.232	1.208	1.188	1.209	1.233	1.214	1.194	1.210
	Monday	0.988	1.024	1.017	1.014	1.054	1.016	0.998	1.028	1.063	1.020	0.975	0.975
	Tuesday	1.016	0.993	0.985	0.969	0.964	0.965	0.978	0.992	0.976	0.975	0.971	0.983
	Wednesday	0.997	0.959	0.963	0.972	0.973	0.999	0.952	0.970	0.958	0.986	0.951	1.064
	Thursday	0.940	0.949	0.967	0.975	0.954	0.964	1.003	0.954	0.951	0.950	1.025	0.951
	Friday	0.836	0.888	0.865	0.871	0.855	0.883	0.887	0.868	0.864	0.875	0.886	0.871
	Saturday	1.029	1.016	1.031	1.033	1.045	1.020	1.044	1.041	1.030	1.041	1.051	1.009
059P49	Sunday	1.416	1.328	1.329	1.366	1.281	1.291	1.286	1.284			1.271	1.273
	Monday	0.961	1.010	0.978	0.962	1.037	0.974	0.961	0.966			0.959	0.972

KYTC 2019 Daily Factors for Urban General		JAN	FEB	MAR	APR	MAY	JUN	JUL	AUG	SEP	OCT	NOV	DEC
	Tuesday	0.985	0.950	0.942	0.932	0.935	0.940	0.942	0.962			0.926	0.969
	Wednesday	0.964	0.958	0.928	0.929	0.931	0.955	0.900	0.943			0.921	1.037
	Thursday	0.908	0.929	0.947	0.932	0.934	0.931	0.993	0.966			1.026	0.925
	Friday	0.831	0.903	0.906	0.920	0.910	0.918	0.930	0.902			0.908	0.882
	Saturday	1.116	1.025	1.079	1.087	1.062	1.083	1.079	1.061			1.078	1.025
059P82	Sunday	1.441	1.350	1.318	1.231	1.352	1.269	1.311	1.158		1.224	1.288	1.328
	Monday	0.914	1.022	0.961	1.035	0.996	1.017	0.953	0.925		0.904	0.908	0.931
	Tuesday	0.946	0.798	0.915	0.930	0.943	0.915	0.898	1.057		0.985	0.951	0.972
	Wednesday	0.942	0.942	0.907	0.908	0.888	0.960	0.891	0.941		0.985	0.889	0.957
	Thursday	0.970	0.913	0.935	0.942	0.936	0.932	0.985	0.960		0.976	0.959	0.948
	Friday	0.789	0.950	0.928	0.959	0.901	0.903	0.947	0.946		0.927	0.937	0.900
	Saturday	1.258	1.221	1.166	1.064	1.121	1.094	1.133	1.055		1.062	1.195	1.070
073P04	Sunday							1.314	1.334	1.385	1.351	1.255	1.343
	Monday							1.021	0.957	1.019	0.987	0.924	0.944
	Tuesday							0.932	0.967	0.929	0.925	0.989	0.945
	Wednesday							0.934	0.922	0.912	0.939	0.898	1.042
	Thursday							0.925	0.937	0.935	0.910	1.051	0.895
	Friday							0.884	0.886	0.863	0.898	0.874	0.871
	Saturday							1.108	1.123	1.116	1.124	1.112	1.096
076P87	Sunday	1.429	1.359	1.328	1.318	1.269	1.262	1.249	1.276	1.278	1.312	1.263	1.285
	Monday	0.935	0.973	0.978	0.979	1.044	0.998	0.970	0.993	1.032	0.996	0.936	0.951
	Tuesday	0.977	0.938	0.940	0.951	0.953	0.944	0.960	0.986	0.955	0.946	0.948	0.991
	Wednesday	0.932	0.930	0.926	0.934	0.946	0.964	0.944	0.956	0.945	0.954	0.941	1.026
	Thursday	0.916	0.902	0.932	0.931	0.937	0.953	0.990	0.934	0.933	0.934	0.995	0.904
	Friday	0.853	0.900	0.907	0.932	0.885	0.913	0.907	0.888	0.890	0.878	0.904	0.878
	Saturday	1.149	1.143	1.103	1.053	1.051	1.037	1.047	1.051	1.055	1.087	1.098	1.063
078P24	Sunday	1.411	1.568	1.404	1.512	1.494	1.468	1.408	1.486	1.424			1.451
	Monday	0.968	0.986	0.965	0.971	1.049	0.942	0.930	0.976	1.040			0.918
	Tuesday	0.968	0.939	0.949	0.961	0.930	1.023	0.951	0.987	0.896			0.936
	Wednesday	1.005	0.933	0.954	0.937	0.937	0.931	0.923	0.955	0.928			1.033
	Thursday	0.960	0.909	0.950	0.892	0.920	0.919	0.995	0.916	0.902			0.910

KYTC 2019 Daily Factors for Urban General		JAN	FEB	MAR	APR	MAY	JUN	JUL	AUG	SEP	OCT	NOV	DEC
	Friday	0.774	0.802	0.820	0.852	0.810	0.842	0.863	0.799	0.843			0.830
	Saturday	1.117	1.157	1.140	1.102	1.093	1.075	1.092	1.113	1.180			1.134
087P86	Sunday	1.289	1.265	1.266	1.220	1.185	1.131	1.188	1.177	1.215	1.175	1.174	1.176
	Monday	0.941	0.951	0.967	0.978	0.950	0.953	1.036	0.996	1.041	1.062	0.988	0.998
	Tuesday	1.001	0.936	0.921	0.991	0.971	0.973	1.037	0.999	0.938	0.969	0.921	0.998
	Wednesday	0.989	0.968	0.913	0.949	0.977	0.997	0.977	0.962	0.966	1.010	0.924	1.002
	Thursday	0.933	0.936	0.959	0.938	1.004	0.933	0.886	0.951	0.938	0.997	1.021	0.916
	Friday	0.848	0.926	0.955	0.937	0.910	0.983	0.921	0.931	0.902	0.911	0.919	0.927
	Saturday	1.113	1.102	1.105	1.039	1.047	1.055	1.009	1.020	1.063	0.921	1.111	1.024
	Sunday	1.595	1.486	1.422	1.460	1.401	1.417	1.394	1.394	1.424	1.402	1.413	1.354
098P12	Monday	0.934	0.972	0.974	0.978	1.043	0.951	0.941	0.959	1.025	0.976	0.930	0.928
	Tuesday	1.001	0.942	0.945	0.949	0.942	0.947	0.931	0.961	0.936	0.950	0.941	0.991
	Wednesday	0.912	0.936	0.941	0.930	0.934	0.936	0.892	0.964	0.939	0.940	0.901	1.068
	Thursday	0.910	0.897	0.941	0.904	0.920	0.929	1.004	0.933	0.920	0.924	1.007	0.896
	Friday	0.811	0.849	0.854	0.870	0.836	0.864	0.868	0.842	0.830	0.846	0.849	0.838
	Saturday	1.142	1.142	1.093	1.102	1.097	1.130	1.142	1.108	1.116	1.133	1.144	1.075
	Sunday	1.674	1.623	1.616	1.601	1.604	1.525	1.551	1.585	1.634	1.595	1.564	1.546
109I04	Monday	0.863	0.888	0.872	0.889	0.954	0.899	0.890	0.897	1.079	0.918	0.861	0.865
	Tuesday	0.922	0.849	0.865	0.856	0.855	0.868	0.887	0.902	0.825	0.869	0.854	0.923
	Wednesday	0.857	0.845	0.852	0.869	0.846	0.888	0.857	0.865	0.851	0.867	0.830	0.933
	Thursday	0.906	0.884	0.886	0.891	0.895	0.901	0.905	0.888	0.848	0.878	0.972	0.875
	Friday	0.817	0.894	0.901	0.913	0.859	0.897	0.897	0.867	0.824	0.859	0.891	0.860
	Saturday	1.502	1.546	1.500	1.401	1.436	1.372	1.395	1.408	1.466	1.476	1.491	1.360
	Sunday	1.690	1.639	1.645	1.562	1.524	1.510	1.487	1.581	1.582	1.569	1.493	1.527
118I03	Monday	0.878	0.908	0.929	0.929	1.000	0.919	0.910	0.930	0.997	0.937	0.880	0.854
	Tuesday	0.996	0.925	0.923	0.930	0.914	0.935	0.917	0.941	0.901	0.904	0.908	0.946
	Wednesday	0.929	0.921	0.936	0.933	0.938	0.954	0.904	0.939	0.922	0.927	0.887	1.059
	Thursday	0.886	0.873	0.899	0.893	0.902	0.909	0.979	0.895	0.882	0.894	1.008	0.861
	Friday	0.800	0.847	0.830	0.861	0.824	0.865	0.858	0.835	0.827	0.840	0.846	0.832
	Saturday	1.236	1.257	1.181	1.170	1.162	1.143	1.185	1.178	1.208	1.247	1.263	1.235
D Factor	Sunday	1.472	1.391	1.398	1.367	1.322	1.297	1.287	1.317	1.329	1.326	1.300	1.318

KYTC 2019 Daily Factors for Urban General		JAN	FEB	MAR	APR	MAY	JUN	JUL	AUG	SEP	OCT	NOV	DEC
	Monday	0.937	0.969	0.971	0.970	1.024	0.974	0.969	0.977	1.031	0.988	0.930	0.949
	Tuesday	0.987	0.937	0.944	0.943	0.946	0.955	0.955	0.979	0.944	0.947	0.943	0.980
	Wednesday	0.938	0.935	0.929	0.935	0.949	0.963	0.930	0.947	0.944	0.955	0.913	1.030
	Thursday	0.916	0.910	0.933	0.925	0.934	0.940	0.981	0.931	0.922	0.931	0.999	0.910
	Friday	0.825	0.886	0.875	0.900	0.862	0.890	0.891	0.870	0.860	0.871	0.895	0.861
	Saturday	1.182	1.164	1.134	1.115	1.105	1.097	1.103	1.116	1.122	1.130	1.170	1.088
SD	Sunday	0.148	0.149	0.152	0.137	0.127	0.123	0.119	0.130	0.130	0.121	0.116	0.106
	Monday	0.042	0.043	0.038	0.040	0.035	0.037	0.045	0.040	0.025	0.041	0.050	0.041
	Tuesday	0.042	0.047	0.038	0.035	0.036	0.035	0.044	0.036	0.041	0.036	0.049	0.033
	Wednesday	0.044	0.031	0.035	0.030	0.039	0.031	0.039	0.033	0.035	0.040	0.038	0.042
	Thursday	0.034	0.031	0.030	0.032	0.027	0.028	0.033	0.025	0.029	0.031	0.038	0.027
	Friday	0.024	0.030	0.036	0.028	0.028	0.030	0.031	0.035	0.025	0.023	0.061	0.028
	Saturday	0.126	0.128	0.113	0.101	0.103	0.091	0.098	0.102	0.107	0.130	0.123	0.094
DF	24	25	24	22	23	23	26	25	23	24	25	25	
t-value at 95%	2.064	2.060	2.064	2.074	2.069	2.069	2.056	2.060	2.069	2.064	2.060	2.060	2.060
CI	Sunday	0.061	0.060	0.063	0.059	0.054	0.052	0.047	0.053	0.055	0.050	0.047	0.043
	Monday	0.017	0.017	0.016	0.017	0.015	0.016	0.018	0.016	0.011	0.017	0.020	0.016
	Tuesday	0.017	0.019	0.016	0.015	0.015	0.015	0.017	0.014	0.017	0.015	0.020	0.013
	Wednesday	0.018	0.013	0.014	0.013	0.017	0.013	0.015	0.013	0.015	0.016	0.015	0.017
	Thursday	0.014	0.012	0.013	0.014	0.011	0.012	0.013	0.010	0.012	0.013	0.015	0.011
	Friday	0.010	0.012	0.015	0.012	0.012	0.012	0.012	0.014	0.011	0.010	0.025	0.011
	Saturday	0.052	0.052	0.047	0.044	0.044	0.038	0.039	0.041	0.045	0.053	0.050	0.038
D Factor High	Sunday	1.533	1.451	1.461	1.426	1.376	1.349	1.334	1.370	1.384	1.376	1.347	1.361
D Factor Low		1.411	1.331	1.335	1.308	1.268	1.245	1.240	1.264	1.274	1.276	1.253	1.275
D Factor High	Monday	0.954	0.986	0.987	0.987	1.039	0.990	0.987	0.993	1.042	1.005	0.950	0.965
D Factor Low		0.920	0.952	0.955	0.953	1.009	0.958	0.951	0.961	1.020	0.971	0.910	0.933
D Factor High	Tuesday	1.029	0.984	0.982	0.978	0.982	0.990	0.999	1.015	0.985	0.983	0.992	1.013
D Factor Low		0.970	0.918	0.928	0.928	0.931	0.940	0.938	0.965	0.927	0.932	0.923	0.967
D Factor High	Wednesday	0.956	0.948	0.943	0.948	0.966	0.976	0.945	0.960	0.959	0.971	0.928	1.047
D Factor Low		0.920	0.922	0.915	0.922	0.932	0.950	0.915	0.934	0.929	0.939	0.898	1.013
D Factor High	Thursday	0.930	0.922	0.946	0.939	0.945	0.952	0.994	0.941	0.934	0.944	1.014	0.921

KYTC 2019 Daily Factors for Urban General		JAN	FEB	MAR	APR	MAY	JUN	JUL	AUG	SEP	OCT	NOV	DEC
D Factor Low		0.902	0.898	0.920	0.911	0.923	0.928	0.968	0.921	0.910	0.918	0.984	0.899
D Factor High	Friday	0.835	0.898	0.890	0.912	0.874	0.902	0.903	0.884	0.871	0.881	0.920	0.872
D Factor Low		0.815	0.874	0.860	0.888	0.850	0.878	0.879	0.856	0.849	0.861	0.870	0.850
D Factor High	Saturday	1.234	1.216	1.181	1.159	1.149	1.135	1.142	1.157	1.167	1.183	1.220	1.126
D Factor Low		1.130	1.112	1.087	1.071	1.061	1.059	1.064	1.075	1.077	1.077	1.120	1.050

Table B-8 KYTC 2019 Daily Factors for Urban Interstate

KYTC 2019 Daily Factors for Urban Interstate		JAN	FEB	MAR	APR	MAY	JUN	JUL	AUG	SEP	OCT	NOV	DEC
D Factors	Sunday	1.455 (7)	1.375 (7)	1.318 (7)	1.271 (7)	1.270 (7)	1.231 (8)	1.168 (8)	1.209 (8)	1.205 (7)	1.197 (7)	1.235 (6)	1.194 (6)
	Monday	0.963 (7)	0.985 (7)	1.020 (7)	0.989 (7)	1.042 (7)	1.012 (8)	1.004 (8)	1.019 (8)	1.032 (7)	1.026 (7)	0.990 (6)	0.990 (6)
	Tuesday	0.963 (7)	0.947 (7)	0.984 (7)	0.971 (7)	0.962 (7)	0.998 (8)	0.986 (8)	1.008 (8)	0.993 (7)	0.995 (7)	0.952 (6)	1.025 (6)
	Wednesday	0.939 (7)	0.939 (7)	0.958 (7)	0.955 (7)	0.952 (7)	0.975 (8)	0.945 (8)	0.980 (8)	0.973 (7)	0.984 (7)	0.912 (6)	1.045 (6)
	Thursday	0.886 (7)	0.906 (7)	0.933 (7)	0.923 (7)	0.917 (7)	0.933 (8)	0.997 (8)	0.925 (8)	0.934 (7)	0.934 (7)	0.990 (6)	0.924 (6)
	Friday	0.819 (7)	0.869 (7)	0.852 (7)	0.883 (7)	0.862 (7)	0.867 (8)	0.898 (8)	0.862 (8)	0.867 (7)	0.863 (7)	0.895 (6)	0.864 (6)
	Saturday	1.243 (7)	1.156 (7)	1.090 (7)	1.134 (7)	1.111 (7)	1.091 (8)	1.086 (8)	1.100 (8)	1.082 (7)	1.095 (7)	1.124 (6)	1.047 (6)
008P63	Sunday	1.376				1.151	1.091	1.016	1.072	1.096	1.135		
	Monday	0.981				1.046	1.053	1.052	1.064	1.033	1.067		
	Tuesday	0.973				1.028	1.036	1.051	1.066	1.036	1.042		
	Wednesday	0.935				1.002	1.004	0.986	1.032	1.005	1.000		
	Thursday	0.894				0.935	0.953	1.014	0.944	0.944	0.914		
	Friday	0.812				0.840	0.855	0.894	0.844	0.858	0.851		
	Saturday	1.241				1.058	1.048	1.006	1.026	1.068	1.049		
019P96	Sunday	1.675	1.532	1.472	1.419	1.347	1.397	1.363	1.373	1.381	1.379	1.398	1.342
	Monday	0.936	0.977	0.975	0.972	1.059	0.980	0.958	0.978	1.043	0.990	0.958	0.960
	Tuesday	0.946	0.917	0.924	0.930	0.922	0.945	0.915	0.960	0.930	0.945	0.908	0.969
	Wednesday	0.900	0.915	0.908	0.916	0.932	0.944	0.894	0.926	0.909	0.933	0.895	1.009
	Thursday	0.868	0.894	0.912	0.911	0.912	0.907	0.981	0.901	0.923	0.901	0.979	0.898
	Friday	0.817	0.864	0.876	0.887	0.867	0.858	0.891	0.866	0.868	0.871	0.872	0.856
	Saturday	1.268	1.157	1.145	1.144	1.105	1.140	1.151	1.159	1.103	1.140	1.171	1.101
019P97	Sunday	1.722	1.615	1.525	1.435	1.388	1.411	1.334	1.398				
	Monday	0.915	0.951	0.973	0.970	1.056	0.983	0.951	0.975				
	Tuesday	0.933	0.895	0.920	0.927	0.908	0.941	0.921	0.962				
	Wednesday	0.883	0.904	0.899	0.898	0.925	0.944	0.884	0.912				

KYTC 2019 Daily Factors for Urban Interstate		JAN	FEB	MAR	APR	MAY	JUN	JUL	AUG	SEP	OCT	NOV	DEC
	Thursday	0.854	0.869	0.896	0.884	0.888	0.887	0.973	0.882				
	Friday	0.812	0.865	0.861	0.880	0.845	0.843	0.886	0.861				
	Saturday	1.392	1.253	1.190	1.230	1.188	1.194	1.211	1.207				
047P68	Sunday	1.188	1.121	1.054	0.997		0.973	0.892	0.957	0.990	0.971	1.046	0.960
	Monday	1.032	1.042	1.156	1.078		1.093	1.105	1.125	1.029	1.102	1.090	1.056
	Tuesday	0.996	1.012	1.124	1.095		1.128	1.122	1.128	1.100	1.102	1.019	1.134
	Wednesday	0.971	0.990	1.062	1.051		1.061	1.034	1.078	1.062	1.074	0.926	1.118
	Thursday	0.928	0.924	0.968	0.956		0.979	1.034	0.975	0.977	0.989	1.022	0.958
	Friday	0.823	0.850	0.791	0.843		0.830	0.888	0.818	0.844	0.816	0.884	0.859
	Saturday	1.158	1.123	0.946	1.029		0.998	0.979	0.996	1.043	1.014	1.047	0.974
056P94	Sunday	1.458	1.417	1.385	1.364	1.342	1.390	1.302	1.313	1.321	1.364	1.324	1.313
	Monday	0.941	0.970	0.958	0.945	1.028	0.963	0.944	0.973	1.025	0.972	0.945	0.947
	Tuesday	0.960	0.932	0.936	0.922	0.927	0.929	0.923	0.950	0.948	0.939	0.924	0.971
	Wednesday	0.952	0.919	0.932	0.953	0.924	0.936	0.908	0.943	0.941	0.924	0.897	1.018
	Thursday	0.887	0.908	0.925	0.926	0.910	0.908	0.984	0.913	0.916	0.911	0.983	0.917
	Friday	0.849	0.892	0.891	0.893	0.881	0.896	0.914	0.898	0.876	0.903	0.900	0.859
	Saturday	1.170	1.136	1.125	1.144	1.127	1.135	1.139	1.125	1.091	1.129	1.160	1.092
056P98	Sunday		1.437	1.418	1.347	1.336	1.342	1.310	1.308	1.337	1.315	1.323	1.319
	Monday		0.965	0.962	0.973	1.039	0.979	0.966	0.980	1.041	1.001	0.950	0.976
	Tuesday		0.921	0.930	0.929	0.925	0.941	0.918	0.947	0.939	0.929	0.925	0.971
	Wednesday		0.908	0.915	0.910	0.916	0.927	0.908	0.971	0.927	0.955	0.916	0.969
	Thursday		0.910	0.928	0.914	0.911	0.921	0.978	0.905	0.914	0.919	0.945	0.914
	Friday		0.891	0.872	0.907	0.879	0.894	0.902	0.875	0.875	0.874	0.900	0.880
	Saturday		1.163	1.159	1.166	1.138	1.128	1.137	1.134	1.099	1.131	1.175	1.083
059P93	Sunday	1.430	1.303	1.240	1.250	1.224	1.183	1.137	1.162	1.196	1.168	1.191	1.191
	Monday	0.944	0.978	0.999	0.950	1.025	0.981	0.990	0.997	1.019	0.983	0.958	0.976

KYTC 2019 Daily Factors for Urban Interstate		JAN	FEB	MAR	APR	MAY	JUN	JUL	AUG	SEP	OCT	NOV	DEC
	Tuesday	0.980	0.970	0.974	0.950	0.973	0.980	0.967	0.991	0.965	0.959	0.947	1.013
	Wednesday	0.951	0.958	0.957	0.936	0.944	0.969	0.950	0.965	0.963	0.968	0.914	1.044
	Thursday	0.873	0.920	0.945	0.924	0.931	0.942	1.000	0.947	0.922	0.946	1.008	0.918
	Friday	0.818	0.871	0.870	0.912	0.885	0.904	0.917	0.889	0.893	0.887	0.929	0.877
	Saturday	1.249	1.111	1.095	1.179	1.092	1.092	1.071	1.099	1.106	1.154	1.114	1.041
114P67	Sunday	1.334	1.197	1.133	1.082	1.100	1.062	0.988	1.090	1.112	1.046	1.127	1.038
	Monday	0.995	1.014	1.115	1.034	1.043	1.062	1.066	1.058	1.035	1.066	1.040	1.025
	Tuesday	0.953	0.981	1.080	1.039	1.050	1.083	1.071	1.059	1.034	1.049	0.986	1.092
	Wednesday	0.981	0.977	1.030	1.025	1.021	1.013	0.994	1.016	1.007	1.036	0.922	1.112
	Thursday	0.901	0.916	0.955	0.949	0.934	0.968	1.013	0.934	0.942	0.960	1.004	0.938
	Friday	0.799	0.853	0.804	0.859	0.836	0.855	0.892	0.842	0.854	0.838	0.887	0.853
	Saturday	1.226	1.149	0.970	1.049	1.070	0.995	0.998	1.053	1.062	1.050	1.077	0.993
D Factor	Sunday	1.455	1.375	1.318	1.271	1.270	1.231	1.168	1.209	1.205	1.197	1.235	1.194
	Monday	0.963	0.985	1.020	0.989	1.042	1.012	1.004	1.019	1.032	1.026	0.990	0.990
	Tuesday	0.963	0.947	0.984	0.971	0.962	0.998	0.986	1.008	0.993	0.995	0.952	1.025
	Wednesday	0.939	0.939	0.958	0.955	0.952	0.975	0.945	0.980	0.973	0.984	0.912	1.045
	Thursday	0.886	0.906	0.933	0.923	0.917	0.933	0.997	0.925	0.934	0.934	0.990	0.924
	Friday	0.819	0.869	0.852	0.883	0.862	0.867	0.898	0.862	0.867	0.863	0.895	0.864
	Saturday	1.243	1.156	1.090	1.134	1.111	1.091	1.086	1.100	1.082	1.095	1.124	1.047
SD	Sunday	0.188	0.178	0.178	0.171	0.111	0.175	0.184	0.161	0.146	0.160	0.135	0.162
	Monday	0.041	0.032	0.081	0.049	0.013	0.049	0.062	0.057	0.009	0.051	0.060	0.042
	Tuesday	0.022	0.042	0.083	0.069	0.057	0.076	0.083	0.068	0.064	0.068	0.043	0.071
	Wednesday	0.036	0.036	0.064	0.060	0.042	0.047	0.055	0.057	0.054	0.055	0.013	0.059
	Thursday	0.024	0.019	0.025	0.024	0.017	0.032	0.022	0.030	0.022	0.032	0.027	0.021
	Friday	0.015	0.017	0.039	0.025	0.021	0.027	0.012	0.026	0.016	0.030	0.020	0.011
	Saturday	0.077	0.047	0.095	0.072	0.044	0.072	0.085	0.071	0.024	0.056	0.054	0.054
DF	6	6	6	6	6	7	7	7	6	6	5	5	
t-value at 95%	2.447	2.447	2.447	2.447	2.447	2.365	2.365	2.365	2.447	2.447	2.571	2.571	
CI	Sunday	0.174	0.164	0.165	0.158	0.103	0.146	0.154	0.135	0.135	0.148	0.142	0.170

KYTC 2019 Daily Factors for Urban Interstate		JAN	FEB	MAR	APR	MAY	JUN	JUL	AUG	SEP	OCT	NOV	DEC
	Monday	0.038	0.029	0.075	0.045	0.012	0.041	0.051	0.047	0.008	0.047	0.063	0.044
	Tuesday	0.020	0.039	0.077	0.063	0.052	0.063	0.069	0.057	0.059	0.063	0.045	0.075
	Wednesday	0.033	0.033	0.059	0.055	0.039	0.039	0.046	0.048	0.050	0.051	0.014	0.062
	Thursday	0.023	0.018	0.023	0.022	0.016	0.027	0.018	0.025	0.021	0.029	0.029	0.022
	Friday	0.014	0.015	0.036	0.023	0.019	0.023	0.010	0.022	0.015	0.028	0.021	0.012
	Saturday	0.071	0.043	0.088	0.066	0.041	0.060	0.071	0.059	0.022	0.052	0.056	0.057
D Factor High	Sunday	1.629	1.539	1.483	1.429	1.373	1.377	1.322	1.344	1.340	1.345	1.377	1.364
D Factor Low		1.281	1.211	1.153	1.113	1.167	1.085	1.014	1.074	1.070	1.049	1.093	1.024
D Factor High	Monday	1.001	1.014	1.095	1.034	1.054	1.053	1.055	1.066	1.040	1.073	1.053	1.034
D Factor Low		0.925	0.956	0.945	0.944	1.030	0.971	0.953	0.972	1.024	0.979	0.927	0.946
D Factor High	Tuesday	0.985	0.989	1.067	1.040	1.019	1.074	1.069	1.076	1.057	1.063	0.995	1.096
D Factor Low		0.943	0.908	0.907	0.908	0.910	0.935	0.917	0.951	0.934	0.932	0.907	0.950
D Factor High	Wednesday	0.972	0.972	1.017	1.010	0.991	1.014	0.991	1.028	1.023	1.035	0.926	1.107
D Factor Low		0.906	0.906	0.899	0.900	0.913	0.936	0.899	0.932	0.923	0.933	0.898	0.983
D Factor High	Thursday	0.909	0.924	0.956	0.945	0.933	0.960	1.015	0.950	0.955	0.963	1.019	0.946
D Factor Low		0.863	0.888	0.910	0.901	0.901	0.906	0.979	0.900	0.913	0.905	0.961	0.902
D Factor High	Friday	0.833	0.884	0.888	0.906	0.881	0.890	0.908	0.884	0.882	0.891	0.916	0.876
D Factor Low		0.805	0.854	0.816	0.860	0.843	0.844	0.888	0.840	0.852	0.835	0.874	0.852
D Factor High	Saturday	1.314	1.199	1.178	1.200	1.152	1.151	1.157	1.159	1.104	1.147	1.180	1.104
D Factor Low		1.172	1.113	1.002	1.068	1.070	1.031	1.015	1.041	1.060	1.043	1.068	0.990