



2005

Rhode Island Report on the Judiciary 2005

Follow this and additional works at: <http://helindigitalcommons.org/lawarchive>



Part of the [Law Commons](#)

Recommended Citation

"Rhode Island Report on the Judiciary 2005" (2005). *Library Archive*. Paper 66.
<http://helindigitalcommons.org/lawarchive/66>

This Article is brought to you for free and open access by the HELIN State Law Library at HELIN Digital Commons. It has been accepted for inclusion in Library Archive by an authorized administrator of HELIN Digital Commons. For more information, please contact anne@helininc.org.



RHODE ISLAND

2
0
0
5

JUDICIARY

ANNUAL REPORT



250 Benefit Street
Providence, Rhode Island 02903
(401) 222-3266
www.courts.ri.gov



LETTER OF TRANSMITTAL



J. JOSEPH BAXTER, JR.
STATE COURT
ADMINISTRATOR

To the Honorable Members of the General Assembly:

It is with pride and satisfaction that I present to you the 2005 Annual Report of the Rhode Island Judiciary, pursuant to G.L. 1956 (1997 Reenactment) § 8-15-7.

I am very proud of the accomplishments of our judicial employees in 2005. It was a busy year. The conversion of the WANG computer system was a major undertaking for our technology department and court staff. We continued to improve access and security in our existing facilities, even as we made plans to occupy two new courthouses and draw up plans for a third. The dedication exhibited day in and day out by our court employees is second to none.

We continued to live within our means, something I am sure most taxpaying citizens can and do appreciate.

Within these pages you will find a wealth of statistical data and information about our six individual courts, judicial committees, task forces, and ancillary services. I hope you will find it a useful overview that provides accountability of the valuable service the Judiciary provides to all who pass through its doors in the quest for justice.

Yours sincerely,

A handwritten signature in black ink, appearing to read "J. Joseph Baxter, Jr.", written in a cursive style.

J. Joseph Baxter, Jr.
State Court Administrator

LETTER TO THE GENERAL ASSEMBLY

To the Honorable Members of the General Assembly:

It is my great privilege to submit to you the Annual Report on the Rhode Island Judiciary for the year 2005. Within this document, you will find the overviews and the statistics that represent our accomplishments, which would not have been possible without your support and encouragement.



THE HONORABLE
FRANK J. WILLIAMS
CHIEF JUSTICE

I am proud to report that the state's judges, magistrates, and court staff continue to work diligently and carefully as they attend to their judicial responsibilities. Last year, more than 230,000 cases were filed or heard in the Judiciary. In turn, we disposed of more than 227,000 cases. We remain thrifty and practical, utilizing only 1.3 percent of the state's entire budget. For the fourth year running, we have not come back to you for a supplemental budget request.

The decommissioning of our antiquated and inefficient WANG computer system was completed shortly after 2005 closed. With the \$6 million you provided over several years, we have brought our data-processing capabilities through the portal and into the 21st century. The judicial staff from all our courts worked resolutely throughout 2005 to make this important transition. As always with technology, we will need to continue to update our system to avoid what occurred in the 1990s. Our 2007 budget includes funds for this purpose.

Our community outreach accomplishments continue to grow. Our "Justice Rules" program puts teams of lawyers, judges, and judicial staff into classrooms across the state to teach our youth about the basic principles of the legal system, to cultivate positive attitudes about the third branch of government, and to promote careers in the Judiciary.

In its first full year of operation in 2005, our court interpreter program assisted more than 3,000 people in our courts. We hope to expand on its success as we continue to strive for more accessibility and understanding.

I am planning a General Assembly orientation about our Judiciary in January 2007, similar to the one we did in 2005.

We have come a long way together and we have accomplished much collectively, thanks to your willingness to share in our vision of justice for all and advance our goal of safe, efficient, and user-friendly courts for all Rhode Islanders and all who pass through the doors of our courts – the last refuge of our democracy.

Yours sincerely,

A handwritten signature in cursive script that reads "Frank J. Williams".

Frank J. Williams
Chief Justice

TABLE OF CONTENTS

Letter of Transmittal	i
Letter to the General Assembly	ii
Table of Contents	iii

JUDICIAL PERFORMANCE

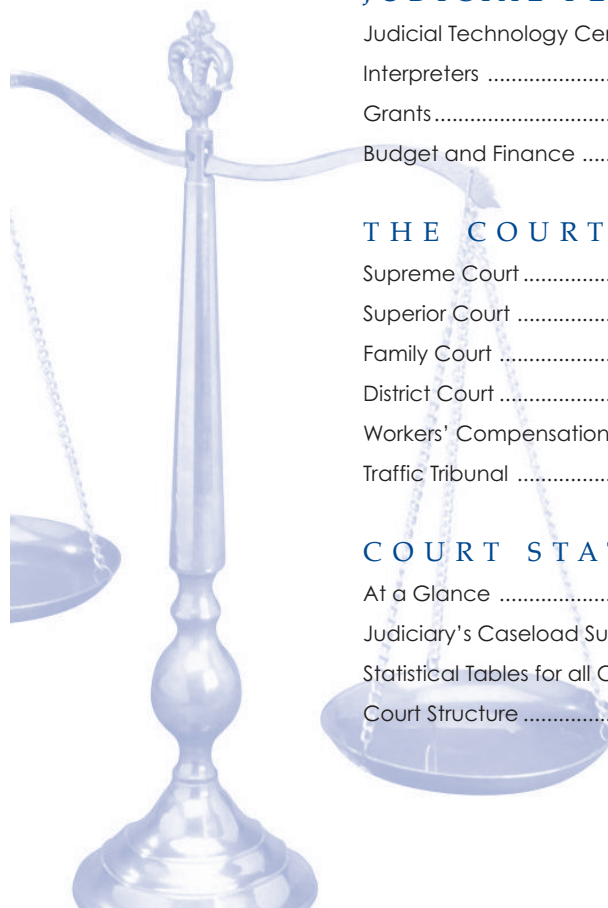
Judicial Technology Center ("JTC")	3
Interpreters	4
Grants	5
Budget and Finance	5

THE COURTS

Supreme Court	8
Superior Court	10
Family Court	12
District Court	14
Workers' Compensation Court	16
Traffic Tribunal	18

COURT STATISTICS

At a Glance	20
Judiciary's Caseload Summary	21
Statistical Tables for all Courts	22
Court Structure	39



RHODE ISLAND JUDICIARY

250 Benefit Street
Providence, Rhode Island 02903
(401) 222-3266
www.courts.ri.gov

JUDICIAL
P E R F O R M A N C E



JUDICIAL TECHNOLOGY CENTER (“JTC”)

CONVERSION OF THE WANG SYSTEM TO THE ACS CASE MANAGEMENT SYSTEM

In 2005, the courts converted from the Wang System to the ACS case management system were:

- ◆ Workers' Compensation Court;
- ◆ Superior Court - Civil calendar;
- ◆ Family Court;
- ◆ Supreme Court; and
- ◆ Disciplinary Counsel.

These conversions represent the majority of case workload for our Judiciary. We entered the names of 444,151 parties into the system and we added 233,603 cases. The case management conversion was a massive undertaking and court personnel dedicated nights and weekends to reach a successful conclusion.

UPGRADE OF THE LOCAL AREA NETWORK

In early 2005, the Rhode Island Judiciary was realizing significant response time problems across the judicial network. The two main issues contributing to this problem were the added data streams with the conversion of the courts and the drastic increase in the use of email throughout the system network.

In May 2005, JTC met with OSHEAN and became a member of its network. With the OSHEAN membership, the JTC was involved in a collaboration that developed an overall plan to install a dedicated fiber optic ring for the judicial facilities. The first portion of the ring, connecting the Garrahy Judicial Complex, the Licht Judicial Complex, and the Fogarty Judicial Annex, went live in October 2005. This eliminated the response time problems and bottlenecks that computer users were experiencing. The fiber ring will continue to be extended until all of the judicial facilities are connected together.

In addition to the network upgrade, the JTC staff installed load balancers. These redundant hardware systems provide the ability to balance users across more than one server, thereby ensuring that one application or database server does not get overloaded. The load balancers were installed in July 2005 and have clearly made a difference in the response time to users accessing the ACS Case Management System.

COMPUTER ROOM DESIGN

During 2005, the Rhode Island Judiciary worked to complete the construction of the new Kent County Courthouse. The JTC staff has been working to ensure

that all of the necessary computing facilities are available when the new courthouse opens.

With the redesign of the server room into a fully redundant, state-of-the-art data center, the new Kent County Courthouse will house computing equipment to support all of the Judiciary's data processing needs. It will also become a disaster recovery and business continuity site for the Judiciary. In case of a catastrophic failure of the current computer center, the new center will take over all processing requirements for the Judiciary within a short period of time (the switch over time has not been finalized, but preliminarily it is expected that the courts will be only interrupted for about thirty to forty-five minutes). As disaster recovery has taken on a new importance for all organizations since the Katrina devastation, the Judiciary, with its two fully redundant data centers, will be a leader in this area.

INTERPRETERS

The Office of Interpreters had a very successful and fruitful first year having accomplished several important activities. The Office participated in several Spanish radio shows and appeared in at least two well-known Hispanic publications in an effort to inform the community of its availability. The six full-time Spanish interpreters hired in November 2004 are fully proficient in the judicial processes and have assisted over 3,000 court users during the past year. The interpreters' assistance ranges from directing court users to the right courtroom to interpreting matters such as termination of parental rights, custody, and various types of trials.

The Office is currently working closely with students enrolled in the Community College of Rhode Island who need to complete the internship component of their Interpreting and Translating Program. The Office also participated in the Providence College Spanish Program career day to explore interpreting as a profession. In an effort to expand their knowledge and expertise, the interpreters participated in a three-day seminar conducted and sponsored by the National Association of Judiciary Interpreters and Translators ("NAJIT").

The Office uses a monthly schedule system to inform all the courts of the availability of the interpreters. The schedule has made interpreter accessibility and availability more user-friendly for all court personnel. Additionally, the Office has become an active member of the Supreme Court Permanent Advisory Committee on Women and Minorities in the Courts. As a result of the committee involvement, the Office was requested to translate several frequently used forms in the various courts.

GRANTS

The Judicial Records Center of the Rhode Island Supreme Court was awarded a \$30,000 grant from the Rhode Island Foundation to preserve historical court records. Part of the grant is being used for the conservation treatment of six damaged court record books dating from 1747 to 1800. The remainder of the grant funds is being used to microfilm sixty-six court record books dating from 1671 to 1800.

These manuscript court record books contain the official record of the outcome of over 250,000 court actions adjudicated by the colonial courts of Rhode Island. Microfilming these books will serve both preservation and access purposes by: 1) reducing the handling of these fragile volumes; 2) providing preservation backup copies of the books; and 3) allowing access to the information contained in these books to offsite users, including historical researchers around the country.

The Law Library also received a grant from the Champlin Foundation of \$48,000.00 to upgrade and update the library's technology facilities and infrastructure. The funds will allow the Law Library to purchase sorely needed computers and printers for both the main library and the county facilities. The grant will also provide the funds to implement wireless Internet and Intranet access for all who walk through the library doors.

BUDGET AND FINANCE

In 2005, the Office of Budget and Finance assisted in keeping expenditures within appropriations for the fourth year in a row. The Office also issued its own Judicial Purchasing Rules and Regulations. A purchasing committee was created and bidding processes were put into place to maximize competition among vendors. Additionally, procedures were implemented to create processes that are efficient and effective.

Some of the notable highlights in 2005 for the Office include the following:

- ◆ Vendor Accounting List ("VAL"). A tool was developed that provides staff who are responsible for purchasing goods and services and paying invoices with information that saves time and improves accuracy. This tool provides cross indexing of vendor and accounting information. As constructed, it provides staff with a list of vendors with product category entries based on the previous year's purchases.

THE COURTS

- ◆ Streamlined purchasing of office supplies. The purchase of office supplies is now web-based and centralized. This process is a more efficient way of ordering supplies and provides greater fiscal control.
- ◆ Internal auditing. The addition of an internal auditor to the Office has expanded the ability to enhance accounting processes.
- ◆ State travel policy. The out-of-state travel has been centralized. The in-state travel policy has been rewritten to ensure consistency of calculation and conformance to state law.

LAW DAY COMMITTEE

The Rhode Island Judiciary celebrated National Law Day on May 3, 2005. The 2005 Law Day Committee was chaired by Supreme Court Justice Maureen McKenna Goldberg and District Court and Traffic Tribunal Chief Judge Albert E. DeRobbio. The Law Day Committee arranged for programs in dozens of Rhode Island schools with the help of the Rhode Island Bar Association, a co-sponsor, and Roger Williams University School of Law, the Rhode Island Department of Elementary and Secondary Education, and the Rhode Island Police Chiefs' Association. The programs emphasize the importance of law as a unifying force in our diverse society and provide students with opportunities for discussion with members of the legal community.

In 2005, thirty-two middle and high schools participated in Rhode Island Law Day classroom programs, and six high schools participated in the University of Rhode Island Law Day presentation.

The Law Day program for 2005 continued its essay contest for tenth and eleventh grade students. The winning essayist received a \$1,000 Scholastic Award, an internship opportunity at the Rhode Island Supreme Court, and an engraved trophy cup. Cranston High School West was the winning school for the third year in a row.



SUPREME COURT



The Honorable Frank J. Williams, Chief Justice (Center)
The Honorable Francis X. Flaherty (Far left)
The Honorable Paul A. Suttell (2nd from left)
The Honorable William P. Robinson III (2nd from right)
The Honorable Maureen McKenna Goldberg (Far right)

COMMUNITY OUTREACH AND PUBLIC RELATIONS

The Supreme Court's community outreach accomplishments continue to grow. The court's "Justice Rules" program puts teams of lawyers, judges, and judicial staff into classrooms across the state to teach young students about the basic principles of the legal system, to cultivate positive attitudes about the third branch of government, and to promote interest about careers in the Judiciary. The program is now in twenty-eight of Rhode Island's thirty-nine cities and towns, reaching more than 50,000 school children from kindergarten to grade 12.

Now in its second year, the Chief Justice's "Citizens' Summit" television program on Rhode Island's Public Broadcasting Service channel added to the success of its inaugural show on the Truancy Court by putting the spotlight on jury service and the Supreme Court.

The Supreme Court continues to ride the circuit twice a year to conduct oral arguments of actual cases in the outlying cities and towns. In 2005, the high court sat in Smithfield, at Bryant University, and in Kingston, at the University of Rhode Island.

APPELLATE MEDIATION

The Appellate Mediation Program, introduced in 2003, successfully mediated fifty percent (50%) of its civil appellate cases in 2005. That was the goal set by Chief Justice Williams when the program was instituted. The program now has eight retired justices serving as mediators. An anonymous survey of participants indicated that ninety-three percent (93%) of those taking part would use the same mediator again and eighty-seven percent (87%) would recommend the program to others.

THE LAW CLERK DEPARTMENT

For 2005, the Law Clerk Department accomplished much and continued many of the initiatives of the previous year. Primarily, the Department was extremely productive, working on approximately 181 draft decision assignments, an increase from the previous year. Confronted with an increase in assignments, the Department has striven to reduce and/or prevent the administrative appeal backlogs with respect to the increasingly busy counties. A concurrent initiative this year has been to promote increased interaction among the county and Garrahy Judicial Complex Law Clerks and the Providence-based Law Clerks resulting in increased communication and assignment-sharing.

Promoting flexibility among the Law Clerks with respect to assignments has been particularly important in 2005, during which complex litigation matters, such as the Station Fire and the lead paint case, have necessitated the special assignment of Law Clerks, which along with the Law Clerks assigned to the special calendar, has resulted in a reduced staff to handle the general assignments of the Department. However, the fourteen member Law Clerk Department has thus far accomplished its major goal of avoiding any significant backlog in case assignments, while concomitantly accommodating the special calendar and case assignments.

THE LAW LIBRARY

The Law Library remains committed to maintaining and preserving resource materials in a variety of formats and continues to upgrade and expand both its print and electronic resources. Our advances to a "virtual library" are more evident with the increase in the database licenses and the exponential increases in information on the Internet. Library subscriptions include both public and judicial contracts with Lexis and Westlaw, allowing unlimited access to these vast databases.

Technological changes and spiraling costs of legal materials prompted the administration to request the Law Library to review print and serial purchases in every court. An inventory of all major subscriptions was undertaken. The result was the elimination of duplicative materials, the adaptation to and education in electronic resources whenever possible, and the rigorous maintenance of remaining subscriptions as well as extensive reorganization and account control. To date, the foregoing review has realized a savings of over \$100,000.

In 2005, the Rhode Island Supreme Court briefs (2000 - 2005) were digitized by Thomson West and loaded on the Westlaw database. Immediate plans foresee retrospective digitization back to 1990.

SUPERIOR COURT



Row 1 (Bottom) - Left to right: Michael A. Silverstein, Francis J. Darigan Jr., Mark A. Pfeiffer, Melanie Wilk Thunberg, Alice Bridget Gibney, Joseph F. Rodgers, Jr. (Presiding Justice), Robert D. Krause, Vincent A. Ragosta, Patricia A. Hurst, Judith C. Savage, and Stephen J. Fortunato, Jr. Row 2 - Left to right: Gordon M. Smith, Patricia L. Harwood, William J. McAtee, Jeffrey A. Lanphear, Susan E. McGuirl, Stephen P. Nugent, O. Rogeriee Thompson, Netti C. Vogel, Edward C. Clifton, William A. Dimitri, Jr., Gilbert V. Indeglia, Edwin J. Gale, Daniel A. Procaccini, Allen P. Rubine, Joseph A. Keough, and Susan L. Revens.

Now in its sixth year, the Rhode Island Adult Drug Court has been able to provide a mechanism for non-violent felony offenders that suffer from addiction to seek the appropriate level of substance abuse counseling and ultimately adapt to a new, sober, and healthy lifestyle. A full-time magistrate leads the Adult Drug Court team in weekly participant reviews and court sessions. Participants are able to complete their education, gain meaningful employment, and become re-engaged with family that they had lost due to their addictions. In 2005, the Adult Drug Court served over 115 active participants. In June 2005, the court began conducting case reviews in each of the county courthouses.

The average cost for an Adult Drug Court participant to complete the program successfully is approximately \$3,600 annually. By comparison, the taxpayer cost to house a minimum security prisoner in Rhode Island is approximately \$36,000 annually.

Now in its fifth year, the Superior Court Business Calendar continues to be an efficient alternative for more complex business cases. The expeditious manner in which these cases are now handled has been a great benefit to the litigants as well as the business community.

Established in 2005, the Superior Court Committee on Judicial Technology and Automation has focused on issues involving public access to court

records, automation of filing and document management systems, and the current state of technology in the court.

The committee considered the technologies used by courts in other jurisdictions and compared these with the systems currently available to judges and attorneys in Rhode Island. Committee members attended presentations by the Supreme Court's Judicial Technology Center as well as by vendors of law office, courtroom, and court technologies. The committee's ten recommendations are contained in its 113-page report and are comprehensive in nature and scope.

In the Gun Court, the dramatic impact on the prosecution of gun crimes is seen in the reduction of the disposition rate for these cases, from an average of eighteen months to merely four months from the time of filing a case. In 2005, 192 cases were disposed on the Gun Court calendar, with an average disposition rate of 177 days. A sentence is imposed in eighty-three percent (83%) of cases.

Two years ago, the Superior Court Bench Bar Committee of the Rhode Island Bar Association established a subcommittee to review the Superior Court Rules of Civil Procedure. A report followed in December 2005, entitled "The Superior Court Bench Bar Subcommittee's Proposals to Consider Revisions to the Rhode Island Rules of Civil Procedure." One of the more significant recommendations is a revision of the rule dealing with timely service of process.

A panel discussion was presented to the Rhode Island Bar Association at its June 2005 annual meeting. It was to be submitted for consideration to Presiding Justice Rodgers for his approval and to the Superior and Supreme Courts for final consideration.

FAMILY COURT



Constance Brown

Row 1 (Bottom) - Left to right: Howard I. Lipsey, Michael B. Forte, Pamela M. Macktaz, Jeremiah S. Jeremiah, Jr. (Chief Judge), Haiganush R. Bedrosian, Raymond E. Shawcross, and Kathleen A. Voccola. Row 2 - Left to right: Mary McCaffrey, Laureen D'Ambr, Francis J. Murray, Jr., John A. Mutter, Gilbert T. Rocha, Stephen J. Capineri, and Debra E. DiSegna. Row 3 - Left to right: Edward H. Newman, Jeanne L. Shepard, George N. DiMuro, John J. O'Brien, Jr., Angela M. Paulhus, Thomas Wright, and Patricia K. Asquith.

The Rhode Island Family Court has had a number of accomplishments over the past year. Child support collections were recorded at \$76,738,223.71 for 2005. This is an increase of two percent (2%) over the previous year's collections and continues the trend of increasing the collection of outstanding child support payments.

The Family Court received a congressional grant for \$400,000, with the support and assistance of Congressman Patrick Kennedy, to implement a Mental Health Clinic. With this specialized program, children and families that have been diagnosed or are suspected to have mental health issues will receive timely assessments that will enable the Family Court to make a determination based upon clinical information that was previously unavailable. The Mental Health Clinic will provide rapid assessments and evaluations with on-site capability for professional screening, referral, in-depth assessment in outpatient and residential settings, timely reporting of treatment recommendations to the court, and treatment and case management of both the child and family service needs.

National Adoption Day was celebrated in Family Court on Saturday, November 19, 2005. Rhode Island's celebration coincided with events being held across the United States on this day to draw attention to the adoption process and the large number of children available for adoption. The Family Court finalized twenty-six adoptions with twenty different families. The

celebration was supported by many sponsors and community agencies. The Family Court welcomed over 250 participants to the event. Although over 500 hundred adoptions a year are performed, there are still over 200 children waiting to find a place to call home. The Rhode Island Judiciary has not only demonstrated how opening the doors of the court can change peoples lives but, more importantly, how opening your hearts can have a tremendous impact on the lives of so many children who need a place to call home.

The Family Treatment Drug Court ("FTDC") has been expanded to the Leighton Judicial Complex in Kent County. With the addition of this court, we can now serve individuals from communities surrounding Kent County. Senator Jack Reed was instrumental in assisting the Family Court in receiving a Congressional grant which will fund this new initiative. The FTDC program quickly identifies, and assesses child(ren) up to age eighteen that are exposed to their parent(s) substance abuse, provides substance-abuse treatment for parents, develops comprehensive multi-disciplinary case plans for families, ensures intensive case monitoring, and provides for frequent court supervision of court orders, case plan compliance, and progress in treatment.

As of December 16, 2005, the FTDC had 159 clients enrolled, nine over the target level. There have been fifty-four graduations since program inception and one drug-free baby has been born to a participant. From October 1, 2004 through September 30, 2005, there were thirty-two graduates of the program. The follow-up rate at six months for this project is eighty-six percent (86%). The Center for Substance Abuse Treatment (funding source) requires a minimum follow-up rate of eighty percent (80%).

In the past year, the Truancy Court program has expanded into thirty-three cities and towns. The first Truancy Court was implemented in Hope High School in 2000. To date, there are now 139 schools plus a waiting list being serviced including elementary, middle, and high schools. In fiscal year 2005, the Truancy Court had 2,000 participants or individual service plans. At the end of the fiscal year 2005 academic school year, an average of seventy-five percent (75%) of the participants increased their school attendance and an average of sixty-two percent (62%) had demonstrated an increase in academics.

The Family Court received a Congressional grant in the amount of \$209,000 for the Truancy Court to expand its services to include tutoring. Senator Lincoln Chafee, a longtime supporter of this program, was extremely influential in getting these dollars allocated for this purpose.

DISTRICT COURT



Constance Brown

Row 1 (Bottom) - Left to right: John M. McLoughlin, Stephen P. Erickson, Michael A. Higgins, Albert E. DeRobbio (Chief Judge), Patricia D. Moore, Walter Gorman, and Frank J. Cenerini. Row 2 - Left to right: Christine S. Jabour, Rafeal Ovalles, Jeanne E. LaFazia, Madeline Quirk, Elaine T. Bucci, Richard A. Gonnella, William Clifton, and Joseph P. Ippolito, Jr.

The District Court continues to handle its caseload in an efficient and expeditious manner. Despite record high filings, the District Court's statewide disposition rate for misdemeanors was ninety-three percent (93%) and the statewide disposition rate for civil and small claims cases significantly exceeded 100 percent.

Most remarkably, each division of the District Court achieved a misdemeanor disposition rate of over ninety percent (90%). Specifically, the Second Division (Newport) had a ninety-two percent (92%) rate, the Third Division (Warwick) had a ninety-three percent (93%) rate, the Fourth Division (South Kingstown) had a ninety-six percent (96%) rate, and the Sixth Division (Providence/Bristol) had a ninety-three percent (93%) rate. Moreover, the District Court, which has adopted a sixty-day target for misdemeanor dispositions, achieved this mark in eighty-eight percent (88%) of all misdemeanor cases disposed.

The court disposed of a record number of civil and small claims cases in 2005, which resulted in a record high disposition rate. Civil dispositions totaled 21,203 for a record high disposition rate of 115 percent, based on 18,430 civil filings. Similar to the civil dispositions, small claims dispositions were at the highest level ever – 21,502. Based on 16,581 filings, the 2005 small claims disposition rate also was a record high of 129 percent.

The District Court information technology staff has, in earnest, continued the rollout of the very successful criminal complaint interface project. This interface is installed in State Police barracks and local police departments so that their personnel can transfer criminal complaints to the Judiciary and receive data back from the courts. This year, the following police departments have been installed:

- ♦ Barrington (6th Division)
- ♦ Burrillville (6th Division)
- ♦ Central Falls (6th Division)
- ♦ Charlestown (4th Division)
- ♦ Coventry (3rd Division)
- ♦ Cranston (6th Division)
- ♦ Cumberland (6th Division)
- ♦ East Greenwich (3rd Division)
- ♦ East Providence (6th Division)
- ♦ Foster (6th Division)
- ♦ Glocester (6th Division)
- ♦ Lincoln (6th Division)
- ♦ Narragansett (4th Division)
- ♦ Newport (2nd Division)
- ♦ North Kingstown (4th Division)
- ♦ North Providence (6th Division)
- ♦ Pawtucket (6th Division)
- ♦ Portsmouth (2nd Division)
- ♦ Smithfield (6th Division)
- ♦ State Police - Hope Valley (3rd and 4th Divisions)
- ♦ State Police - Portsmouth (6th and 2nd Divisions)
- ♦ State Police - Wickford (3rd and 4th Divisions)
- ♦ State Police - Lincoln (3rd and 6th Divisions)
- ♦ State Police - Chepachet (6th Division)
- ♦ Tiverton (2nd Division)
- ♦ West Greenwich (3rd Division)
- ♦ West Warwick (3rd Division)
- ♦ Woonsocket (6th Division)

WORKERS' COMPENSATION COURT



Constance Broton

Row 1 (Bottom) - Left to right: Bruce Q. Morin, John Rotondi, Jr., George E. Healy, Jr. (Chief Judge), Debra L. Olsson, and Janette A. Bertness. Row 2 - Left to right: Hugo L. Ricci, Jr., Dianne M. Connor, Edward P. Sowa, Jr., George T. Salem, Jr., and Robert Hardman.

The 2005 year was highlighted by the June 24th appointment of Robert E. Hardman as judge of the Workers' Compensation Court. Associate Judge Hardman has had a varied law career. Prior to earning his Juris Doctor degree in 1988, Associate Judge Hardman served as Assistant Court Clerk in the Superior Court. During his years of private practice, he focused on workers' compensation, personal injury, real estate, products liability, commercial business, and medical malpractice litigation. With the appointment of Associate Judge Hardman, the Workers' Compensation Court has a full complement of judges for the first time in more than three years.

Other appointments made during the year included the elevation of John Sabatini from Deputy Administrator to Administrator of the Workers' Compensation Court. Prior to his service with the court, Mr. Sabatini was the former chairman of both the Workers' Compensation Advisory Council and the Senate Labor Committee and was instrumental in implementing the 1990 Rhode Island's Workers' Compensation reform legislation. Additionally, George Mason, the former Director of Policy and Legislation for Attorney General Patrick Lynch, was appointed Deputy Administrator on June 27, 2005. He will assist the court in various outreach, policy, and legislative issues.

In October 2005, the Workers' Compensation Court co-sponsored the 8th Annual New England Workers' Compensation Educational Conference in Newport, Rhode Island. Each year, this forum brings together recognized workers' compensation professionals from throughout the Northeast to discuss a multitude of workers' compensation legal and medical issues of mutual concern. One of

the highlights of the conference was the presentation of Workers' Compensation Court Law Updates by Supreme Court Chief Justice Joseph R. Weisberger (retired).

Also at the conference, Chief Judge George E. Healy, Jr. unveiled the blueprint for the "YES-RI" (Young Employee Safety Rhode Island) program – a coalition of government and private groups aimed at improving the safety and health of teen workers through education and advocacy. The program comes in response to national and local reports citing the rise in young worker injuries.



The YES-RI coalition's goals will be to:

- Coordinate teen workplace safety and injury prevention efforts statewide;
- Educate teens, their parents, employers, school personnel, policy makers, and the public on workplace safety, injury prevention and young workers' rights;
- Advocate for teen workplace safety and injury prevention; and
- Provide data on work experiences and work-related injuries of teens for use in future program development and evaluation.

The National Institute for Occupational Safety and Health reports that nationwide young people are injured in the workplace at twice the rate of adult workers. Yet no single agency has the ultimate responsibility for protecting young people from workplace hazards. Many of these injuries could be avoided if there were proactive education and prevention programs in the high schools as well as in the workplace. YES-RI will help reach and empower these young adults.

YES-RI will send teams of lawyers, judges, medical professionals, and safety professionals into high schools statewide to teach young worker awareness of job safety and workers rights including workers' compensation.

During October 2005, the Workers' Compensation Court held a one-day off-site strategic planning retreat at the Museum of Work and Culture in Woonsocket. At the meetings, our judges and senior administrative and supervisory staff discussed various ways to improve operational efficiencies and deliver enhanced services to our constituents.

TRAFFIC TRIBUNAL



Constance Bracon

Row 1 (Bottom) - Left to right: Joseph P. Ippolito, Jr., Albert E. DeRobbio (Chief Judge), and Lillian M. Almeida. Row 2 - Left to right: Albert R. Ciullo, Edward C. Parker, Domenic A. DiSandro III, and William T. Noonan.

An initiative that involves the information technology staff at the Rhode Island Traffic Tribunal ("RITT") is electronic ticketing. An "e-ticket" is a summons generated directly from the police cruiser, utilizing a mobile data terminal and printer.

In conjunction with the State Police, the project consists of developing a system whereby an officer issuing a summons can electronically interface with RITT's computer system to obtain necessary information on the individual stopped and to provide a method of automatically entering standard driver's license data onto a ticket. The design and software have been completed and the hardware necessary for this project has been selected. The project is now targeted to be piloted in a number of State Police vehicles.

The utilization of the e-ticket program will validate summons information and improve the accuracy of information contained. It will also reduce the data entry time necessary to enter each summons into the Judiciary's case management system.

COURT STATISTICS



AT A GLANCE

2005 CASELOAD

Filings/Hearings	230,532
Disposed	227,275

FISCAL YEAR 2006 BUDGET - ENACTED

	ALL FUNDS	GENERAL REVENUE
Supreme Court	\$ 23,998,471	\$ 21,602,151
Defense of Indigent Persons	\$ 3,016,818	\$ 3,016,818
Superior Court	\$ 18,705,907	\$ 18,138,389
Family Court	\$ 16,435,478	\$ 13,917,290
District Court	\$ 8,650,732	\$ 8,650,732
Workers' Compensation Court	\$ 6,287,111 (restricted)	
Traffic Tribunal	\$ 6,862,587	\$ 6,862,587
TOTAL	\$ 83,957,104	\$ 72,187,967

JUDGES

65 Judges
4 Minorities
20 Female
18 Magistrates
8 Female

EMPLOYEES

FTE Count = 742

FACILITIES

6 Courthouses
76 Courtrooms
(including 4 Grand Jury rooms)

FISCAL YEAR 2005 RECEIPTS - ALL FUNDS

	CIVIL	CRIMINAL/TRAFFIC/JUVENILE FINES/FEES/COSTS	GRANTS
Supreme Court	\$ 17,650	\$ N/A	\$ 749,505
Superior Court	\$ 1,366,291	\$ 1,851,878	\$ 46,084
Family Court	\$ 218,288	\$ 693	\$ 1,792,924
District Court	\$ 1,074,813	\$ 7,449,056	\$ 1,650
Workers' Compensation Court	\$ 55,819	\$ N/A	
Traffic Tribunal	\$ N/A	\$ 13,626,995	
TOTAL RECEIPTS GENERATED	\$ 2,732,861	\$22,927,929	\$ 2,590,163

TOTAL RECEIPTS FISCAL YEAR 2005 **\$28,250,953**

JUDICIARY'S CASELOAD SUMMARY

COURT	CASE TYPE	FILINGS/HEARINGS	DISPOSITIONS
Supreme Court	Appellate Mediation	345 119	262 61
Superior Court	Felony Misdemeanor Civil	5,509 274 9,215	5,709 245 *6,225
Family Court	Juvenile Divorce Miscellaneous Petitions Abuse Child Support Support Hearings	11,209 4,090 701 2,241 ***4,551 ****22,341	10,030 4,331 **1,843
District Court	Misdemeanors Small Claims Civil Abuse Mental Health/Other Admin Appeals	30,568 16,581 18,430 734 555 130	28,476 21,502 21,223
Workers' Compensation Court		8,234	8,492
Traffic Tribunal		117,046	118,876
Total Filings and Dispositions		230,532	227,275
Including Support Hearings		252,873	

* Please note, unlike the previous two years, there was no mass dismissal of cases with no action in five years.

** County dispositions are estimated.

*** Reciprocal filings stay open until age of majority of child unless otherwise ordered by court.

**** **Support hearings represent the number of hearings held.** Therefore, the same case may be counted more than once.

SUPREME COURT APPELLATE CASELOAD

CRIMINAL	2001	2002	2003	2004	2005
Docketed	79	81	64	80	70
Disposed	96	106	80	62	67
Pending	137	113	103	123	134
CIVIL	2001	2002	2003	2004	2005
Docketed	237	234	195	174	156
Disposed	277	266	207	194	148
Pending	279	250	249	231	236
CERTIORARI	2001	2002	2003	2004	2005
Docketed	132	130	75	87	87
Disposed	106	131	128	64	73
Pending	98	99	56	80	96
MISCELLANEOUS	2001	2002	2003	2004	2005
Docketed	206	309	339	53	32
Disposed	182	315	299	66	35
Pending	38	28	67	43	34
ALL CASES	2001	2002	2003	2004	2005
Docketed	654	754	673	394	345
Disposed	661	818	714	386	323
Pending	552	490	475	477	500

SUPREME COURT MANNER OF DISPOSITION

BEFORE ARGUMENT	2001	2002	2003	2004	2005
Withdrawn	69	73	105	54	*
Dismissed	141	217	129	64	*
Petition Granted	49	146	129	7	*
Petition Denied	75	103	108	69	*
Other	32	29	32	12	*
Article 1, Rule 12A - Show Cause Orders	14	12	9	13	*
Total	380	580	512	219	*
AFTER ARGUMENT/ MOTION CALENDAR	2001	2002	2003	2004	2005
Withdrawn	1	0	1	3	*
Affirmed	48	51	23	8	*
Modified	1	0	0	0	*
Reversed	12	2	0	0	*
OTHER	2001	2002	2003	2004	2005
Total Orders	5	5	4	2	*
Per Curiam	67	58	28	13	*
Total	118	105	110	87	*
Total	185	163	138	100	*
AFTER ARGUMENT/MERITS	2001	2002	2003	2004	2005
Withdrawn	2	0	0	1	*
Affirmed	52	47	31	43	*
Modified	15	11	12	6	*
Reversed	27	17	21	17	*
Total	96	75	64	67	*
Total Dispositions	2001	2002	2003	2004	2005
Total Dispositions	661	818	714	386	*
% Disposed of Within 300 Days of Docketing	43%	59%	63%	46%	*

* Due to the conversion of the Supreme Court case management system, the statistical reports were unavailable but will be reported next year.

SUPERIOR COURT CIVIL CASELOAD

CIVIL ACTIONS

PROVIDENCE/BRISTOL COUNTY	2001	2002	2003	2004	2005
Cases Filed	6,858	7,136	6,889	6,908	6,689
Cases Disposed	4,950	5,195	20,199	17,650	4,120
<i>Trial Calendar Summary</i>					
Cases Added	1,803	1,625	1,459	1,548	1,460
Cases Disposed	1,833	1,797	1,777	1,653	1,443
Pending at Year End	2,280	2,004	1,634	1,567	1,428

KENT COUNTY	2001	2002	2003	2004	2005
Cases Filed	1,088	1,182	1,150	1,099	1,168
Cases Disposed	823	836	2,462	2,520	920
<i>Trial Calendar Summary</i>					
Cases Added	340	347	299	337	312
Cases Disposed	369	299	299	387	426
Pending at Year End	330	381	388	337	150

WASHINGTON COUNTY	2001	2002	2003	2004	2005
Cases Filed	669	682	743	796	772
Cases Disposed	477	547	1,758	1,551	604
<i>Trial Calendar Summary</i>					
Cases Added	195	174	184	182	214
Cases Disposed	166	192	190	205	265
Pending at Year End	285	268	285	248	177

NEWPORT COUNTY	2001	2002	2003	2004	2005
Cases Filed	587	670	686	614	586
Cases Disposed	507	443	1,116	1,425	581
<i>Trial Calendar Summary</i>					
Cases Added	176	175	198	126	158
Cases Disposed	253	172	149	158	252
Pending at Year End	149	157	232	206	107

STATEWIDE	2001	2002	2003	2004	2005
Cases Filed	9,202	9,670	9,468	9,417	9,215
Cases Disposed	6,757	7,021	25,535	23,146	6,225
<i>Trial Calendar Summary</i>					
Cases Added	2,514	2,321	2,140	2,193	2,144
Cases Disposed	2,621	2,460	2,415	2,403	2,386
Pending at Year End	3,044	2,810	2,539	2,358	1,862

SUPERIOR COURT MANNER OF DISPOSITION CIVIL TRIAL CALENDAR

CIVIL ACTIONS

PROVIDENCE/BRISTOL COUNTY	2001	2002	2003	2004	2005
Verdicts	114	81	86	69	25
Judicial Decisions	94	72	37	50	17
Total Trials	208	153	123	119	42
Dismissed/Settled/Other	1,243	1,310	1,250	1,066	1,240
Arbitration/Other Exceptions	382	334	404	468	161*
Total Disposed	1,833	1,797	1,777	1,653	1,443

KENT COUNTY	2001	2002	2003	2004	2005
Verdicts	18	15	10	18	14
Judicial Decisions	21	32	20	20	15
Total Trials	39	47	30	38	29
Dismissed/Settled/Other	258	208	205	252	359
Arbitration/Other Exceptions	72	44	64	97	38*
Total Disposed	369	299	299	387	426

WASHINGTON COUNTY	2001	2002	2003	2004	2005
Verdicts	11	4	8	8	17
Judicial Decisions	4	15	6	3	6
Total Trials	15	19	14	11	23
Dismissed/Settled/Other	126	137	144	164	225
Arbitration/Other Exceptions	25	36	32	30	17*
Total Disposed	166	192	190	205	265

NEWPORT COUNTY	2001	2002	2003	2004	2005
Verdicts	5	4	4	2	6
Judicial Decisions	30	17	7	6	10
Total Trials	35	21	11	8	16
Dismissed/Settled/Other	178	128	105	114	227
Arbitration/Other Exceptions	40	23	33	36	9*
Total Disposed	253	172	149	158	252

STATEWIDE	2001	2002	2003	2004	2005
Verdicts	148	104	108	97	62
Judicial Decisions	149	136	70	79	48
Total Trials	297	240	178	176	110
Dismissed/Settled/Other	1,805	1,783	1,704	1,596	2,051
Arbitration/Other Exceptions	519	437	533	631	225*
Total Disposed	2,621	2,460	2,415	2,403	2,386

* As a result of the civil conversion in June 2005, arbitration cases are being recorded differently in the new case management system. Although these cases are no longer included in this category, they are in the total for each county and statewide.

SUPERIOR COURT FELONY CASELOAD

FELONIES

PROVIDENCE/BRISTOL COUNTY	2001	2002	2003	2004	2005
Cases Filed	4,271	4,073	4,567	4,271	3,909
Cases Disposed	4,383	4,233	4,380	4,074	4,010
Total Pending Cases	1,761	1,535	1,683	1,838	1,791
% Over 180 Days Old	33%	33%	36%	42%	50%

KENT COUNTY	2001	2002	2003	2004	2005
Cases Filed	563	693	705	751	745
Cases Disposed	598	728	649	762	939
Total Pending Cases	195	141	192	193	199
% Over 180 Days Old	37%	26%	13%	17%	22%

WASHINGTON COUNTY	2001	2002	2003	2004	2005
Cases Filed	449	489	447	413	434
Cases Disposed	496	482	415	359	413
Total Pending Cases	78	61	103	135	127
% Over 180 Days Old	17%	23%	15%	13%	17%

NEWPORT COUNTY	2001	2002	2003	2004	2005
Cases Filed	311	366	307	287	421
Cases Disposed	343	405	247	279	347
Total Pending Cases	95	66	72	64	99
% Over 180 Days Old	25%	26%	35%	13%	9%

STATEWIDE	2001	2002	2003	2004	2005
Cases Filed	5,594	5,621	6,026	5,722	5,509
Cases Disposed	5,820	5,848	5,691	5,474	5,709
Total Pending Cases	2,129	1,803	2,050	2,230	2,216
% Over 180 Days Old	33%	32%	33%	37%	44%

SUPERIOR COURT MANNER OF DISPOSITION FELONIES

FELONIES

PROVIDENCE/BRISTOL COUNTY	2001	2002	2003	2004	2005
Pled	3,943	3,827	3,970	3,689	3,624
Filed	6	3	3	3	8
Dismissed	367	352	359	331	338
Trial	66	50	48	51	40
Other	1	1	0	0	0
Total	4,383	4,233	4,380	4,074	4,010
% Disposed of Within 180 Days of Filing	67%	67%	73%	69%	68%

KENT COUNTY	2001	2002	2003	2004	2005
Pled	480	612	537	700	679
Filed	39	24	24	21	18
Dismissed	64	73	77	35	237
Trial	15	18	11	6	5
Other	0	1	0	0	0
Total	598	728	649	762	939
% Disposed of Within 180 Days of Filing	68%	71%	81%	85%	66%

WASHINGTON COUNTY	2001	2002	2003	2004	2005
Pled	427	457	347	290	354
Filed	14	4	5	14	11
Dismissed	41	16	22	47	36
Trial	8	4	10	7	10
Other	6	1	4	1	2
Total	496	482	415	359	413
% Disposed of Within 180 Days of Filing	81%	85%	87%	84%	86%

NEWPORT COUNTY	2001	2002	2003	2004	2005
Pled	313	356	227	223	289
Filed	9	11	3	7	10
Dismissed	19	36	15	42	42
Trial	2	2	2	7	6
Other	0	0	0	0	0
Total	343	405	247	279	347
% Disposed of Within 180 Days of Filing	78%	79%	86%	64%	80%

STATEWIDE	2001	2002	2003	2004	2005
Pled	5,163	5,252	5,108	4,902	4,946
Filed	68	42	35	45	47
Dismissed	491	477	473	455	653
Trial	91	74	71	71	61
Other	7	3	4	1	2
Total	5,820	5,848	5,691	5,474	5,709
% Disposed of Within 180 Days of Filing	69%	70%	75%	72%	70%

SUPERIOR COURT MISDEMEANOR CASELOAD

MISDEMEANORS

PROVIDENCE/BRISTOL COUNTY	2001	2002	2003	2004	2005
Cases Filed	187	167	223	135	173
Cases Disposed	147	152	157	130	117
Total Pending Cases	89	74	90	69	59
% Over 90 Days Old	71%	65%	70%	67%	83%

KENT COUNTY	2001	2002	2003	2004	2005
Cases Filed	71	107	40	44	47
Cases Disposed	79	136	55	45	45
Total Pending Cases	31	18	13	8	23
% Over 90 Days Old	39%	45%	15%	88%	52%

WASHINGTON COUNTY	2001	2002	2003	2004	2005
Cases Filed	40	57	57	49	41
Cases Disposed	51	55	90	68	53
Total Pending Cases	6	26	9	14	12
% Over 90 Days Old	33%	23%	56%	43%	33%

NEWPORT COUNTY	2001	2002	2003	2004	2005
Cases Filed	152	380	237	42	13
Cases Disposed	115	387	244	64	30
Total Pending Cases	53	38	26	6	2
% Over 90 Days Old	32%	37%	73%	33%	0%

STATEWIDE	2001	2002	2003	2004	2005
Cases Filed	450	711	557	270	274
Cases Disposed	392	730	546	307	245
Total Pending Cases	179	156	138	97	96
% Over 90 Days Old	53%	49%	65%	63%	68%

SUPERIOR COURT MANNER OF DISPOSITION MISDEMEANORS

MISDEMEANORS

PROVIDENCE/BRISTOL COUNTY	2001	2002	2003	2004	2005
Pled	89	84	98	77	74
Filed	3	14	4	3	8
Dismissed	39	46	47	44	30
Trial	16	7	8	6	5
Other	0	1	0	0	0
Total	147	152	157	130	117
% Disposed of Within 90 Days of Filing	17%	10%	56%	34%	28%

KENT COUNTY	2001	2002	2003	2004	2005
Pled	46	75	23	25	21
Filed	16	27	9	6	7
Dismissed	14	31	17	9	17
Trial	1	1	2	3	0
Other	3	2	4	2	0
Total	79	136	55	45	45
% Disposed of Within 90 Days of Filing	56%	56%	65%	94%	47%

WASHINGTON COUNTY	2001	2002	2003	2004	2005
Pled	24	36	54	39	37
Filed	7	8	13	10	3
Dismissed	16	8	18	17	10
Trial	3	3	2	1	2
Other	1	0	3	1	1
Total	51	55	90	68	53
% Disposed of Within 90 Days of Filing	54%	59%	82%	82%	81%

NEWPORT COUNTY	2001	2002	2003	2004	2005
Pled	56	187	133	26	11
Filed	41	124	70	9	4
Dismissed	16	70	39	29	14
Trial	2	2	0	0	1
Other	0	4	2	0	0
Total	115	387	244	64	30
% Disposed of Within 90 Days of Filing	55%	74%	81%	56%	33%

STATEWIDE	2001	2002	2003	2004	2005
Pled	215	382	308	167	143
Filed	67	173	96	28	22
Dismissed	85	155	121	99	71
Trial	20	13	12	10	8
Other	4	7	9	3	1
Total	392	730	546	307	245
% Disposed of Within 90 Days of Filing	38%	53%	70%	63%	41%

FAMILY COURT DOMESTIC RELATIONS

DOMESTIC

PROVIDENCE/BRISTOL COUNTY	2001	2002	2003	2004	2005
Filed	3,172	3,212	3,120	3,158	3,096
Filed-Divorce Only	2,780	2,788	2,711	2,694	2,630
Disposed	2,853	2,826	2,783	2,789	2,761
Cases Greater than 360 Days Old	6	17	11	4	3

KENT COUNTY	2001	2002	2003	2004	2005
Filed	854	791	810	821	805
Filed-Divorce Only	749	717	731	727	714
Disposed	868	768	693	730	729
Cases Greater than 360 Days Old	15	5	12	10	7

WASHINGTON COUNTY	2001	2002	2003	2004	2005
Filed	595	581	539	555	561
Filed-Divorce Only	507	514	473	488	483
Disposed	530	551	458	510	549
Cases Greater than 360 Days Old	2	2	20	2	0

NEWPORT COUNTY	2001	2002	2003	2004	2005
Filed	396	407	380	381	329
Filed-Divorce Only	343	350	325	326	263
Disposed	379	394	307	317	292
Cases Greater than 360 Days Old	5	4	25	3	10

STATEWIDE	2001	2002	2003	2004	2005
Filed	5,017	4,991	4,849	4,915	4,791
Filed-Divorce Only	4,379	4,369	4,240	4,235	4,090
Disposed	4,630	4,539	4,241	4,346	4,331
Cases Greater than 360 Days Old	28	28	68	19	20

ABUSE COMPLAINT FILED	2001	2002	2003	2004	2005
Providence/Bristol County	2,064	2,126	1,849	1,933	1,736
Kent County	348	353	298	393	316
Washington County	167	145	134	120	112
Newport County	181	169	124	127	77
Statewide Total	2,760	2,793	2,405	2,573	2,241

	2001	2002	2003	2004	2005
Support Petitions Filed	3,860	3,940	4,801	3,602	4,551

FAMILY COURT JUVENILE CASELOAD

JUVENILE FILINGS BY CATEGORY	2001	2002	2003	2004	2005
Wayward/Delinquent	6,824	7,069	7,415	7,331	7,018
Dependency/Neglect/Abuse	1,569	1,827	1,661	1,720	2,162
Termination of Parental Rights	325	350	365	393	424
Adoption/Guardianship	579	620	599	610	599
Violations	789	845	960	897	938
Other	59	80	50	80	68
Total Filings	10,145	10,791	11,050	11,031	11,209

JUVENILE CALENDAR RESULTS FOR WAYWARD/DELINQUENT CASES

PROVIDENCE/BRISTOL COUNTY	2001	2002	2003	2004	2005
Filed	5,194	5,305	5,852	5,717	5,537
Disposed	4,741	5,121	5,891	5,957	5,141
% Adjudicated Within 180 Days of Filing	*	57%	63%	74%	75%

KENT COUNTY	2001	2002	2003	2004	2005
Filed	1,141	1,264	1,312	1,449	1,289
Disposed	1,075	1,101	1,246	1,402	1,175
% Adjudicated Within 180 Days of Filing	*	48%	52%	56%	57%

WASHINGTON COUNTY	2001	2002	2003	2004	2005
Filed	736	753	698	632	728
Disposed	717	771	742	685	588
% Adjudicated Within 180 Days of Filing	*	67%	61%	63%	76%

NEWPORT COUNTY	2001	2002	2003	2004	2005
Filed	542	591	513	430	402
Disposed	481	578	543	464	407
% Adjudicated Within 180 Days of Filing	*	54%	56%	65%	61%

STATEWIDE	2001	2002	2003	2004	2005
Filed	7,613	7,914	8,375	8,228	7,956
Disposed	7,014	7,571	8,422	8,508	7,311
% Adjudicated Within 180 Days of Filing	*	56%	60%	70%	72%

* Not available.

FAMILY COURT CHILD PROTECTION

JUVENILE CALENDAR RESULTS FOR CHILD PROTECTION CASES

PROVIDENCE/BRISTOL COUNTY	2001	2002	2003	2004	2005
Termination of Parental Rights					
Filed	265	283	268	329	338
Disposed	322	282	308	300	269
Dependency/Neglect/Abuse					
Filed	1,171	1,386	1,310	1,305	1,626
Disposed	1,322	1,283	1,189	1,280	1,311
Other					
Filed	486	523	468	490	441
Disposed	496	478	460	422	373
KENT COUNTY	2001	2002	2003	2004	2005
Termination of Parental Rights					
Filed	30	37	36	29	48
Disposed	25	23	27	40	36
Dependency/Neglect/Abuse					
Filed	210	216	186	177	284
Disposed	153	203	218	236	254
Other					
Filed	63	90	84	112	108
Disposed	62	69	74	87	116
WASHINGTON COUNTY	2001	2002	2003	2004	2005
Termination of Parental Rights					
Filed	20	17	37	14	15
Disposed	10	25	20	21	25
Dependency/Neglect/Abuse					
Filed	105	108	100	106	115
Disposed	143	167	118	145	112
Other					
Filed	57	60	57	58	74
Disposed	61	52	47	57	67
NEWPORT COUNTY	2001	2002	2003	2004	2005
Termination of Parental Rights					
Filed	10	13	24	21	23
Disposed	19	10	21	13	16
Dependency/Neglect/Abuse					
Filed	83	117	65	132	137
Disposed	70	103	77	96	108
Other					
Filed	32	27	40	30	44
Disposed	29	23	37	34	32
STATEWIDE	2001	2002	2003	2004	2005
Termination of Parental Rights					
Filed	325	350	365	393	424
Disposed	376	340	376	374	346
Dependency/Neglect/Abuse					
Filed	1,569	1,827	1,661	1,720	2,162
Disposed	1,688	1,756	1,602	1,757	1,785
Other					
Filed	638	700	649	690	667
Disposed	648	622	618	600	588

DISTRICT COURT SMALL CLAIMS

SECOND DIVISION - NEWPORT COUNTY	2001	2002	2003	2004	2005
Cases Filed	802	702	879	833	895
Cases Disposed	693	795	715	851	1,933
THIRD DIVISION - KENT COUNTY	2001	2002	2003	2004	2005
Cases Filed	2,167	2,256	1,990	2,107	2,459
Cases Disposed	3,897	3,457	2,889	3,154	2,532
FOURTH DIVISION - WASHINGTON COUNTY	2001	2002	2003	2004	2005
Cases Filed	1,312	1,607	1,430	1,103	1,094
Cases Disposed	1,377	1,794	1,735	1,719	1,787
SIXTH DIVISION - PROVIDENCE/BRISTOL COUNTY	2001	2002	2003	2004	2005
Cases Filed	9,760	10,639	11,205	11,689	12,133
Cases Disposed	11,144	11,859	13,119	13,724	15,250
STATEWIDE	2001	2002	2003	2004	2005
Cases Filed	14,041	15,204	15,504	15,732	16,581
Cases Disposed	17,111	17,905	18,458	19,448	21,502
MANNER OF DISPOSITION	2001	2002	2003	2004	2005
Defaults	8,684	8,846	9,382	10,306	11,008
Settlements	6,453	6,981	7,013	6,901	7,448
Judgments	1,974	2,078	2,063	2,241	3,046
Total	17,111	17,905	18,458	19,448	21,502
CASES FILED- OTHER CATEGORIES	2001	2002	2003	2004	2005
Domestic Abuse	669	926	926	765	734
Administrative Appeals	152	134	140	141	130
Mental Health Hearings	516	430	456	601	555

DISTRICT COURT CIVIL CASELOAD

SECOND DIVISION - NEWPORT COUNTY	2001	2002	2003	2004	2005
Cases Filed	1,259	1,196	1,173	1,193	1,367
Cases Disposed	1,093	1,247	1,535	1,516	1,632
THIRD DIVISION - KENT COUNTY	2001	2002	2003	2004	2005
Cases Filed	2,604	2,523	2,595	2,454	2,343
Cases Disposed	3,168	3,723	3,456	4,287	4,226
FOURTH DIVISION - WASHINGTON COUNTY	2001	2002	2003	2004	2005
Cases Filed	1,037	1,167	1,246	1,204	1,116
Cases Disposed	1,048	1,101	1,233	1,624	1,355
SIXTH DIVISION - PROVIDENCE/BRISTOL COUNTY	2001	2002	2003	2004	2005
Cases Filed	13,034	14,167	13,363	13,510	13,604
Cases Disposed	11,499	12,945	12,224	12,728	14,010
STATEWIDE	2001	2002	2003	2004	2005
Cases Filed	17,934	19,053	18,377	18,361	18,430
Cases Disposed	16,808	19,016	18,448	20,155	21,223
MANNER OF DISPOSITION	2001	2002	2003	2004	2005
Defaults	6,026	7,122	7,171	9,640	8,375
Settlements	5,418	6,272	6,264	5,394	7,076
Judgments	5,360	5,618	5,012	5,120	5,762
Other	4	4	1	1	10
Total	16,808	19,016	18,448	20,155	21,223

DISTRICT COURT CRIMINAL CASELOAD

MISDEMEANORS	2001	2002	2003	2004	2005
SECOND DIVISION - NEWPORT COUNTY	2001	2002	2003	2004	2005
Cases Filed	2,760	2,454	2,276	2,518	2,515
Cases Disposed	2,723	2,578	2,229	2,359	2,311
Total Pending	397	153	152	339	510
% Over 60 Days Old	*	17%	41%	57%	69%
THIRD DIVISION - KENT COUNTY	2001	2002	2003	2004	2005
Cases Filed	4,786	4,879	4,893	4,911	5,369
Cases Disposed	4,858	4,984	4,708	4,633	4,986
Total Pending	273	197	351	513	725
% Over 60 Days Old	*	16%	32%	47%	53%
FOURTH DIVISION - WASHINGTON COUNTY	2001	2002	2003	2004	2005
Cases Filed	4,508	4,271	4,222	4,296	4,327
Cases Disposed	4,443	4,314	3,940	4,127	4,150
Total Pending	528	205	450	334	339
% Over 60 Days Old	*	6%	39%	19%	41%
SIXTH DIVISION - PROVIDENCE/BRISTOL COUNTY	2001	2002	2003	2004	2005
Cases Filed	18,298	18,384	17,827	18,277	18,357
Cases Disposed	18,159	18,383	17,578	17,618	17,029
Total Pending	2,622	1,833	1,037	1,043	1,462
% Over 60 Days Old	*	*	28%	25%	39%
STATEWIDE	2001	2002	2003	2004	2005
Cases Filed	30,352	29,988	29,218	30,002	30,568
Cases Disposed	30,183	30,259	28,455	28,737	28,476
Total Pending	3,820	2,388	1,990	2,229	3,036
% Over 60 Days Old	*	*	32%	34%	48%
MANNER OF DISPOSITION	2001	2002	2003	2004	2005
Pled	20,690	21,721	21,643	21,911	21,040
Filed	166	129	80	80	59
Dismissed	7,656	6,441	5,819	6,289	6,624
Trials	634	760	288	239	557
Other	1,036	1,208	625	218	196
Total	30,182	30,259	28,455	28,737	28,476
% Disposed of Within 60 Days of Filing	88%	89%	88%	88%	88%
STATEWIDE FELONIES	2001	2002	2003	2004	2005
Filed	7,197	7,242	7,428	7,170	7,403

* Not available.

WORKERS' COMPENSATION COURT MANNER / STAGE OF DISPOSITION

PRETRIAL	2001	2002	2003	2004	2005
Pretrial Order	3,281	3,160	3,129	3,214	3,147
Order	14	13	7	10	6
Decree	50	64	63	60	103
Consent Decree	123	85	84	69	69
Major Surgery	20	5	2	0	0
Withdrawn	1,511	2,773	2,716	2,720	2,644
Discontinued	44	40	11	7	18
Dismissed	35	27	38	18	74
Other	1,142	90	101	84	0
Total	6,220	6,257	6,151	6,182	6,061
TRIAL	2001	2002	2003	2004	2005
Decision	604	770	569	540	1302
Consent Decree	251	211	189	203	173
Trial Claim Withdrawn	620	740	676	589	694
Petition Withdrawn	154	161	90	91	128
Order	80	58	34	18	30
Dismissed	19	16	11	18	25
Discontinued	14	11	5	4	2
Other	817	912	927	690	21
Total	2,559	2,879	2,501	2,153	2,375
Appeals	2001	2002	2003	2004	2005
Appeals	98	122	123	94	56
Total Dispositions	8,877	9,258	8,775	8,429	8,492

WORKERS' COMPENSATION COURT CASELOAD SUMMARY

EMPLOYEE PETITIONS	2001	2002	2003	2004	2005
Original	3,201	3,076	3,027	2,899	2,783
To Review	2,400	2,178	2,171	2,165	1,951
Second Injury	1	0	0	0	1
To Enforce	786	929	873	983	799
Total	6,388	6,183	6,071	6,047	5,534
EMPLOYER PETITIONS	2001	2002	2003	2004	2005
To Review	1,678	1,767	1,568	1,646	1,629
OTHER	2001	2002	2003	2004	2005
Lump Sum Settlement	713	856	780	669	763
Hospital/Physician Fees	42	70	161	66	131
Miscellaneous	143	106	104	136	177
Total	898	1,032	1,045	871	1,071
Total Petitions	2001	2002	2003	2004	2005
Total Petitions	8,964	8,982	8,684	8,564	8,234
Total Dispositions	8,877	9,258	8,775	8,429	8,492
Total Pending Caseload	2,603	2,326	2,233	2,374	2,141
Total Cases Pending Trial	1,188	910	887	995	1030
% Pending Trial More Than 270 Days	40%	29%	29%	32%	37%

RHODE ISLAND TRAFFIC TRIBUNAL ("RITT") CASELOAD

	2001	2002	2003	2004	2005
Total Summonses Issued*	152,525	163,390	187,429	203,207	220,338
RITT Summonses Issued	89,727	99,406	101,649	104,667	117,046
Total Violations	128,449	130,576	124,618	130,093	142,365
RITT Summonses Disposed	104,042	102,136	106,371	109,808	118,876

BREAKDOWN OF DISPOSED SUMMONSES

Court Hearings	66,990	62,824	67,243	69,293	72,111
Pay by Mail	37,052	39,312	39,128	40,515	46,765
Total	104,042	102,136	106,371	109,808	118,876
% Disposed Within 60 Days	**	98%	98%	98%	98%

BREATHALYZER REFUSALS

Filed	1,633	1,655	1,587	1,870	1,844
Disposed	1,678	1,700	1,605	1,924	1,847
% Disposed Within 60 Days	**	93%	91%	91%	89%

DUI/.08

Filed	26	50	27	4	0
Disposed	27	50	33	4	0
% Disposed Within 60 Days	**	88%	79%	100%	**

INSURANCE

Filed	9,539	10,143	10,940	11,516	11,026
Disposed	10,855	10,625	11,572	12,384	11,446
% Disposed Within 60 Days	**	94%	94%	93%	95%

APEALS

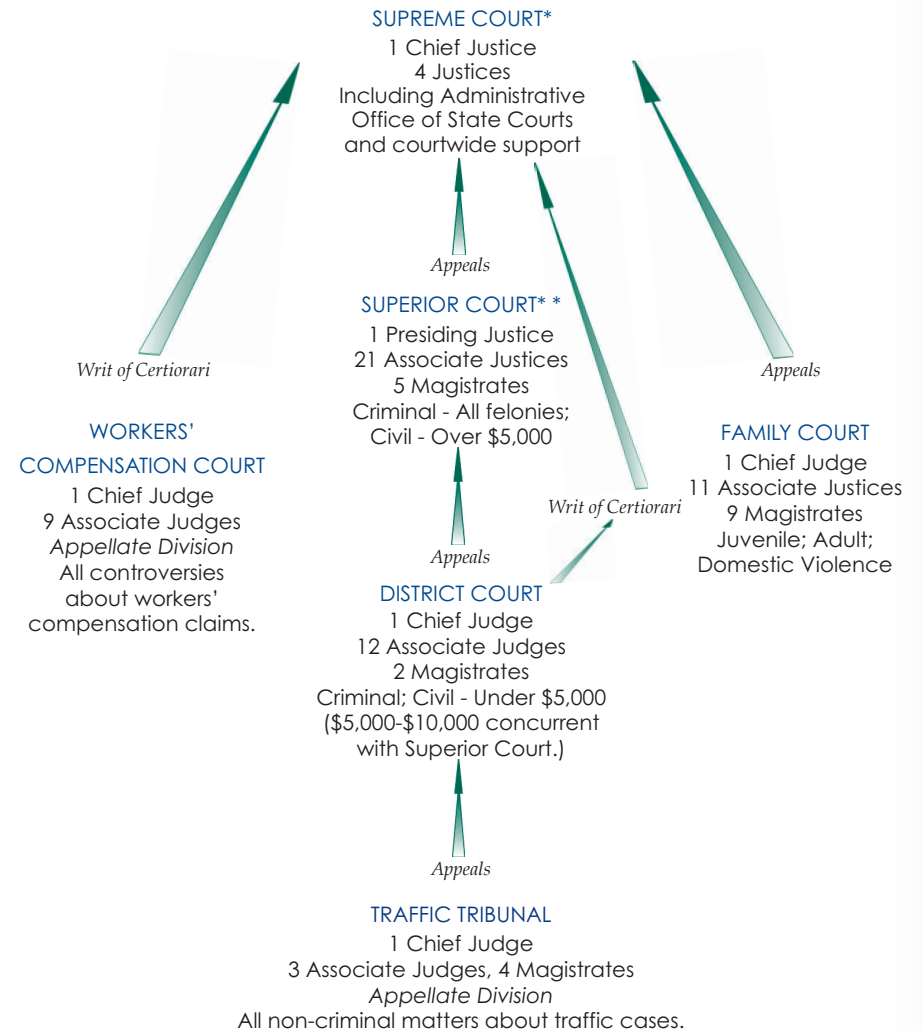
Filed	513	565	700	626	673
Disposed	**	426	507	433	458
Pending	**	**	59	67	50

* Includes summonses issued to both RITT and municipal courts.
** Not available.

COURT STRUCTURE

OFFICE OF STATE COURTS

State Court Administrator • Finance and Budget • Employee Relations • Law Library •
Judicial Technology Center • Facilities and Operations • Judicial Records Center • Domestic
Violence Training And Monitoring Unit • Mandatory Continuing Legal Education • Public
Relations and Community Outreach • Law Clerk Department • Judicial Planning Unit •
General Counsel • Disciplinary Counsel • Clerk's Office • Appellate Screening •
Administrative Assistant to Chief Justice • Interpreter's Office



* Court of last resort
** Court of general jurisdiction
All other courts have limited jurisdiction.