

## Providence College DigitalCommons@Providence

---

Library Commons

Phillips Memorial Library

---

6-5-2007

# Finding Common Ground at Plymouth State University [NERCOMP, June 5, 2007]

Elaine S. Allard

*Plymouth State University*, [eallard@plymouth.edu](mailto:eallard@plymouth.edu)

Jo-Ann M. Guilmett

*Plymouth State University*, [jguilmet@plymouth.edu](mailto:jguilmet@plymouth.edu)

Follow this and additional works at: [http://digitalcommons.providence.edu/lib\\_publications](http://digitalcommons.providence.edu/lib_publications)



Part of the [Information and Library Science Commons](#)

---

Allard, Elaine S. and Guilmett, Jo-Ann M., "Finding Common Ground at Plymouth State University [NERCOMP, June 5, 2007]" (2007). *Library Commons*. Paper 15.

[http://digitalcommons.providence.edu/lib\\_publications/15](http://digitalcommons.providence.edu/lib_publications/15)

This Article is brought to you for free and open access by the Phillips Memorial Library at DigitalCommons@Providence. It has been accepted for inclusion in Library Commons by an authorized administrator of DigitalCommons@Providence. For more information, please contact [mcaprio1@providence.edu](mailto:mcaprio1@providence.edu).

*Finding Common Ground  
at  
Plymouth State University*

Elaine Allard  
&  
JoAnn Guilmett

**PLYMOUTH STATE UNIVERSITY**  
**New Hampshire**

# Plymouth State University

---

- Comprehensive, regional public university in the White Mountains of New Hampshire
- 4000 Undergraduates; 2000 Graduate
- Member institution of the University System of New Hampshire

## The Lamson Learning Commons

---

- Process
- Service model
- Governance structure
- Lessons learned

## Prior to Summer 2004

---

- Traditional Library Services
- Traditional Help Desk/Call Center
- Classroom Technology/AV
- Academic Support Services
- Writing & Reading Center

## Setting the Stage – later in 2004

---

- Informal meetings -- Library & ITS
  - Campus Library 2.0
- Library director discusses with Provost
- Cabinet asks for feasibility study

## Feasibility Study – Winter 2005

---

- Literature search
- Site visit
- Meetings with Library & ITS
- Present findings to Cabinet

## Project Charter – Spring 2005

---

- Joint meetings with Library & ITS
  - Led by President & Provost
- Project charter approved – March
- Planning team formed
  - 3 IT, 4 Library, 2 Faculty, Student



# Project Continues – Summer 2005

---

- Meetings, Meetings, Meetings
- Site Visits
- Planning Team Retreat
- Collaboration with Architect
- Collaboration with Dining Services
- Collaboration with Academic Support Services and Writing Center

## Process continues – Fall / Winter 2005/2006

---

- Learning Commons Manager moves to the Library half-time
- Meetings with Consultant to address change issues
- Construction plans finalized & out to bid

## Transition begins – Spring 2006

---

- Learning Commons Manager develops service model
- Cross-training begins for professional staff (library and IT)
- Select Help Desk student workers transition to the Commons

## Construction – Summer 2006

---

- Circulation area moved to temporary location
- Help Desk relocated to Library
- IT staff relocated to Library
- On-going training

## Grand Opening - Fall 2006

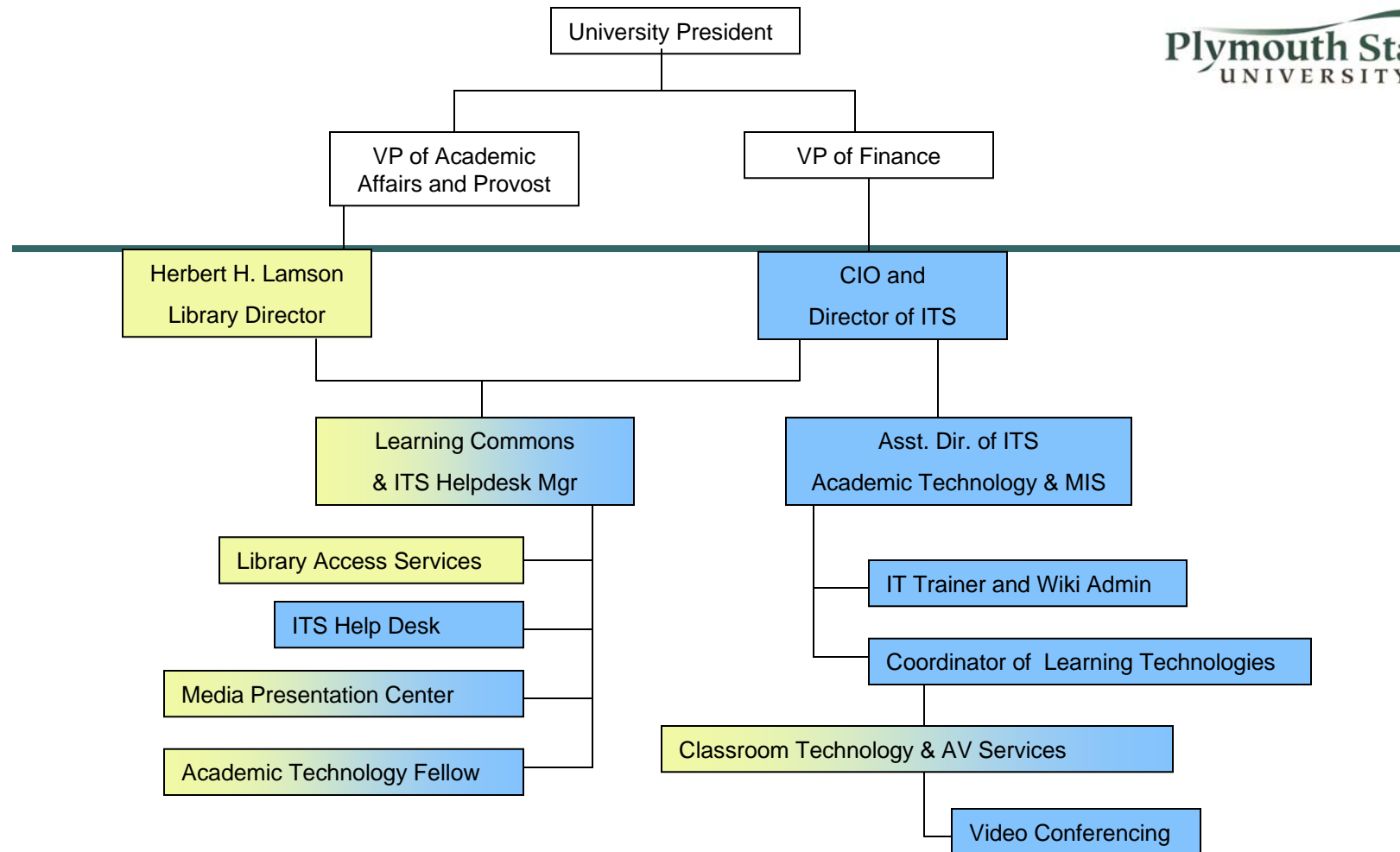
---

- Student staff arrive early for training & team building
- Soft opening with start of fall semester
- Ribbon cutting – Sept. 29, 2006
- Café opens

## The Lamson Learning Commons

---

- Integrated library & IT ‘front line’ services in a central information desk
  - General Campus and Library information
  - Computer support (walk-up, online and telephone)
  - Call center
  - Book checkout and reserves
  - Multimedia equipment checkout
  - Laptop checkout
  - Access & support for multimedia presentation development
- Academic support services & WRC
- Commons Café



The Lamson Learning Commons

Plymouth State University – Plymouth, NH

## Where Are We Now?

---

- Gates Counts
- Computer Logins
- Traffic Patterns
- Building Usage
- MPC Usage



## Lessons Learned

---

- Executive sponsorship is key
- Decision-making structure is essential
  - Needs to be inclusive yet adhering to project schedule
  - Needs clear articulation
  - Consensus not appropriate for all decisions
- Project charter should be guidepost
- Students as consumers
- Don't be afraid to challenge assumptions and stereotypes



# Temporary Quarters

---



# Information Desk

---



# Information Desk - Completed





# Walk-up support



# The Commons Cafe

---



# Call Center

---





# Multimedia Presentation Ctr

---



# Opening Weekend

