

University of Groningen

## Women who smoke during pregnancy are more likely to be referred to an obstetrician

Weiland, Stella; Peters, Lilian L.; Berger, Marjolein Y.; Erwich, Jan Jaap H. M.; Jansen, Danielle

**IMPORTANT NOTE: You are advised to consult the publisher's version (publisher's PDF) if you wish to cite from it. Please check the document version below.**

*Document Version*

Publisher's PDF, also known as Version of record

*Publication date:*

2022

[Link to publication in University of Groningen/UMCG research database](#)

*Citation for published version (APA):*

Weiland, S., Peters, L. L., Berger, M. Y., Erwich, J. J. H. M., & Jansen, D. (2022). *Women who smoke during pregnancy are more likely to be referred to an obstetrician*. Poster session presented at WEON 2022: The art of epidemiology, Nijmegen, Netherlands.

### Copyright

Other than for strictly personal use, it is not permitted to download or to forward/distribute the text or part of it without the consent of the author(s) and/or copyright holder(s), unless the work is under an open content license (like Creative Commons).

The publication may also be distributed here under the terms of Article 25fa of the Dutch Copyright Act, indicated by the "Taverne" license. More information can be found on the University of Groningen website: <https://www.rug.nl/library/open-access/self-archiving-pure/taverne-amendment>.

### Take-down policy

If you believe that this document breaches copyright please contact us providing details, and we will remove access to the work immediately and investigate your claim.

Downloaded from the University of Groningen/UMCG research database (Pure): <http://www.rug.nl/research/portal>. For technical reasons the number of authors shown on this cover page is limited to 10 maximum.

# Women who smoke during pregnancy are more likely to be referred to an obstetrician

Weiland S<sup>1</sup>, Peters LL<sup>1</sup>, Berger MY<sup>2</sup>, Erwich JJHM<sup>3</sup>, Jansen DEMC<sup>2</sup>

<sup>1</sup> University Medical Center Groningen, Department of General Practice & Elderly Care Medicine, Midwifery Science

<sup>2</sup> University Medical Center Groningen, Department of General Practice & Elderly Care Medicine

<sup>3</sup> University Medical Center Groningen, Department of Obstetrics & Gynecology

## BACKGROUND & AIM

In the Netherlands, 80% of pregnant women start prenatal care at a primary care midwife and about 7% of women smoke during pregnancy. The influence of smoking status on referrals is unknown. Therefore, we have investigated the research question: **What is the association between smoking status and healthcare utilization during pregnancy, birth and six weeks postpartum?**

*We compared women who differed on smoking status: non-smokers, early stoppers and late- or non-stoppers*

## METHODS

**Electronic Health Care data of Dutch primary midwifery care practices were analyzed (VeCaS), 2012-2019**

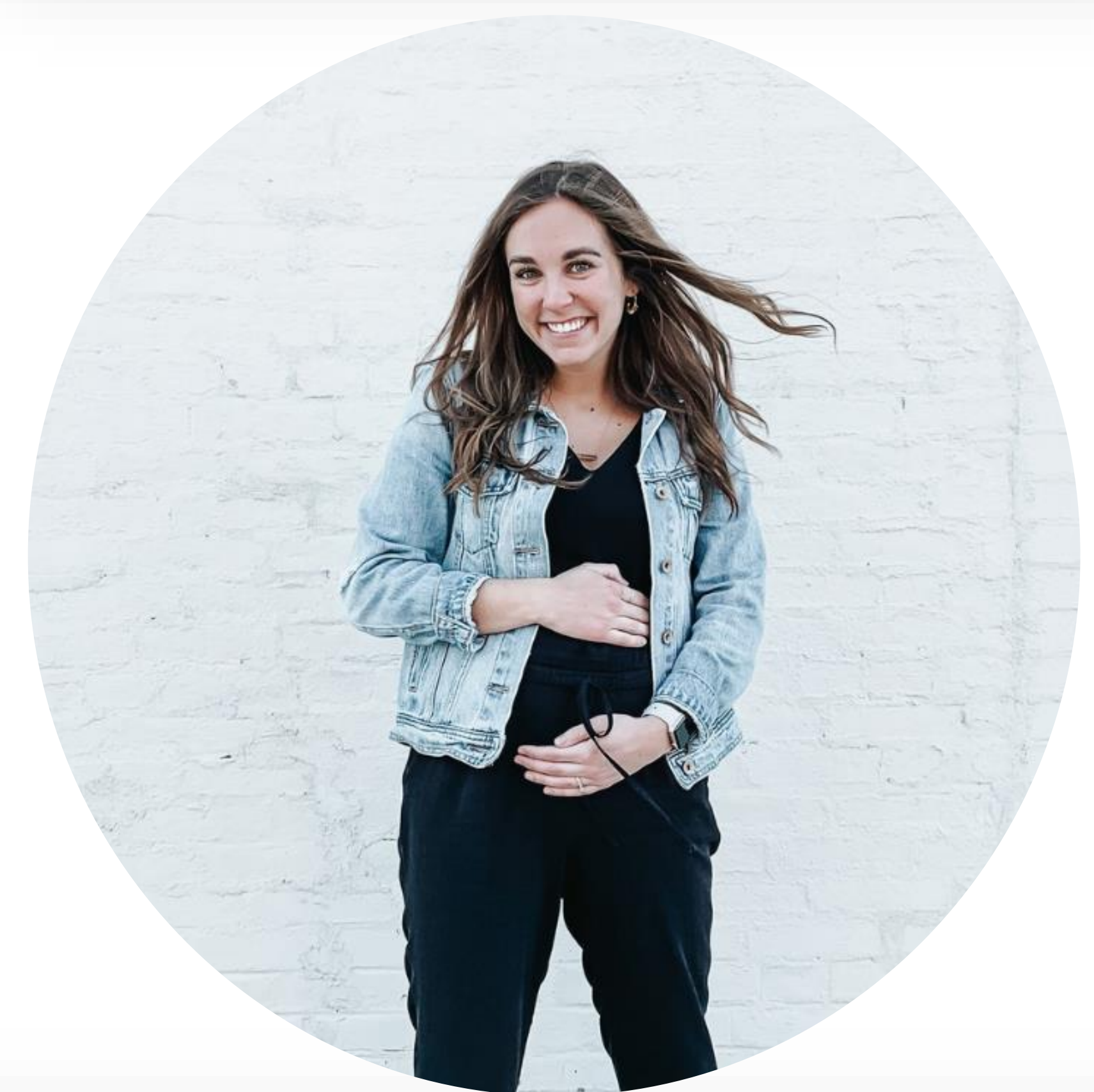
Univariable and multivariable logistic regression analysis were performed to examine the association between smoking status and referrals. Crude and Adjusted ORs (95%CI) were reported.

## RESULTS

**Early stoppers and late- or non-stoppers are more likely to be referred to the obstetrician**

Obstetrician - pregnancy	Referrals n= 13 612	Adjusted OR* (95% CI)
Non-smokers	32%	Ref.
Early stoppers	39%	<b>1.49 (1.36-1.63)</b>
Late – or non-stoppers	41%	<b>1.58 (1.45-1.73)</b>
Obstetrician - birth	n= 9298	
Non-smokers	22%	Ref.
Early stoppers	27%	<b>1.30 (1.17-1.44)</b>
Late – or non-stoppers	24%	<b>1.40 (1.27-1.55)</b>
Obstetrician - postpartum	n= 682	
Non-smokers	2%	Ref.
Early stoppers	1%	<b>0.63 (0.43-0.93)</b>
Late – or non-stoppers	1%	0.82 (0.59-1.13)

\*Adjusted for: parity, SES, BMI, maternal age and ethnicity.



## CONCLUSION

Women who smoke during pregnancy are more likely to be referred to an obstetrician during pregnancy and birth.



Do you want to know more about my research? Please contact me!



Stella Weiland

[s.weiland@umcg.nl](mailto:s.weiland@umcg.nl)