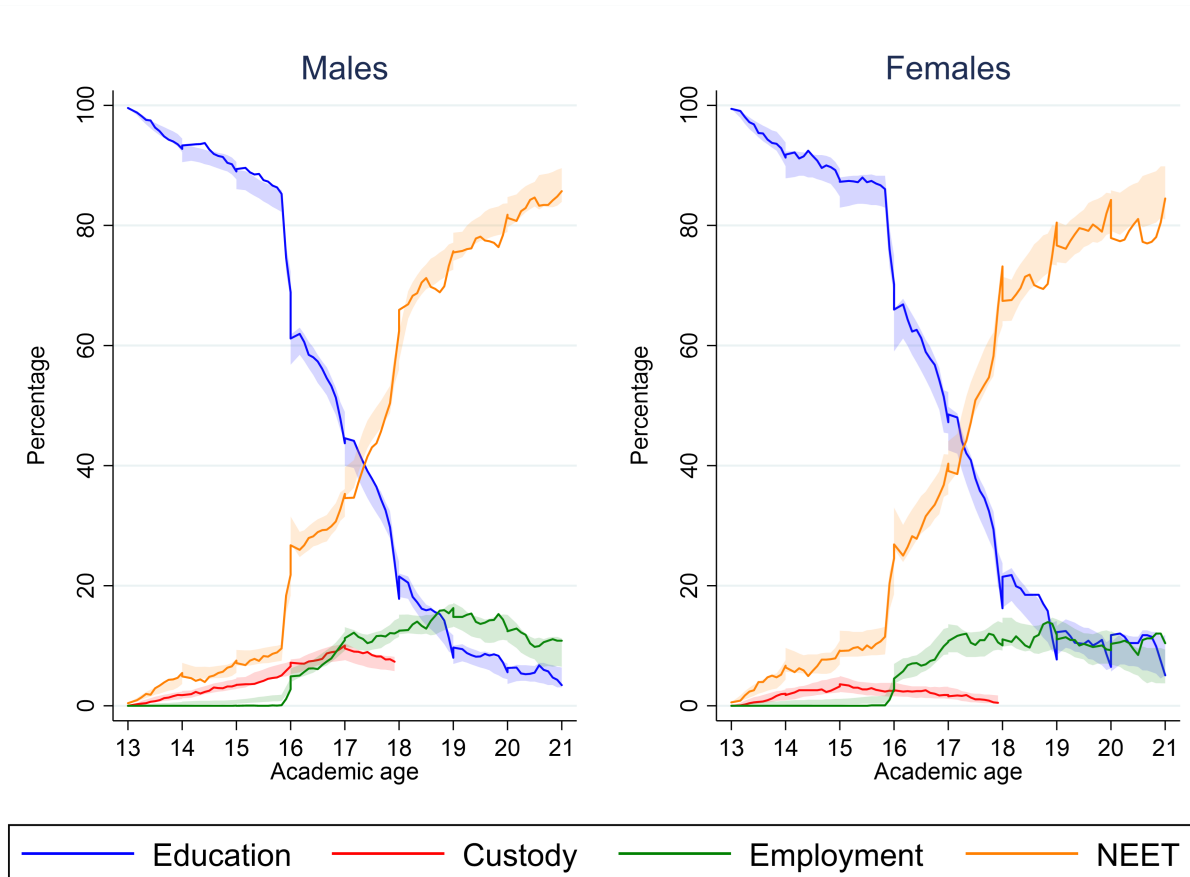


How incarcerating children affects their labour market outcomes - figures

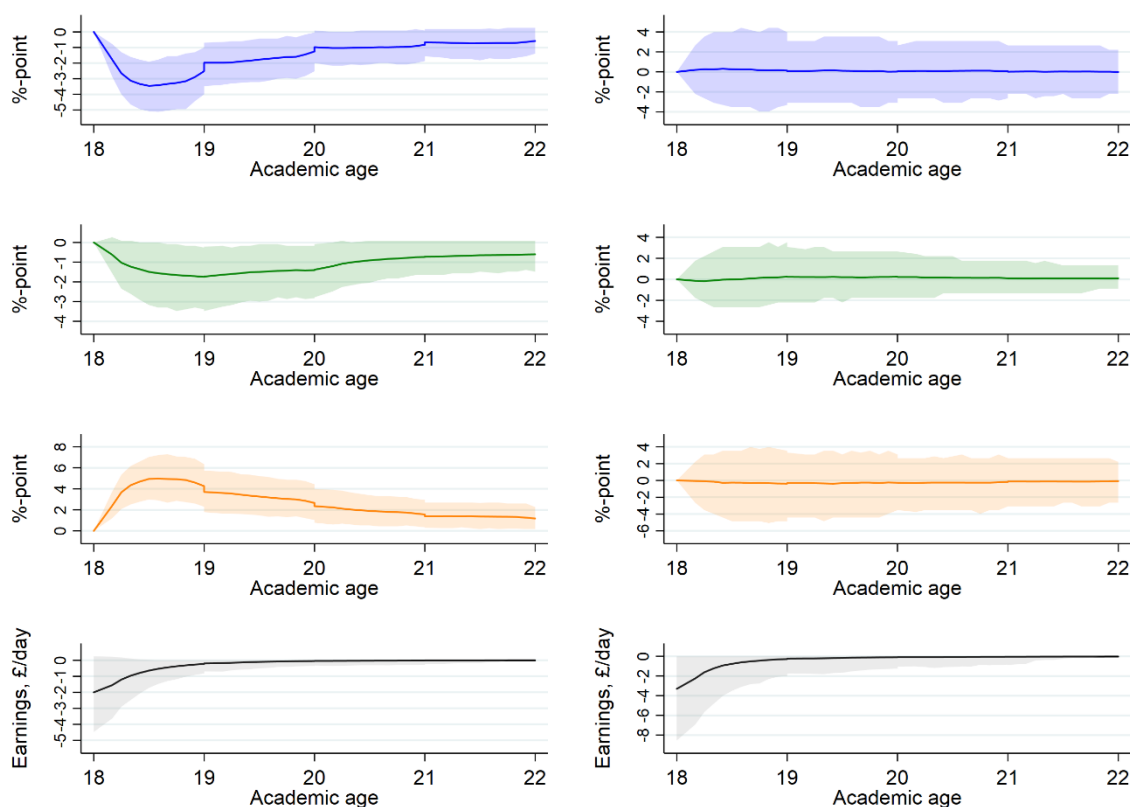
October 4, 2022

Figure 1: *Observed and modelled levels of education, custody employment and NEET for convicted looked after children.*



Notes: The lines in these charts depict the rates of Education, Custody, Employment and NEET from age 13 up to age 21 observed in the data. The shaded areas represent percentiles simulated rates using the results of the estimated model. Simulation involved 1,000 replications and the shaded areas correspond to percentiles 2.5 and 97.5 of the simulated distributions.

Figure 2: *The impacts of having been in custody immediately before current spell for looked after children.*



Notes: *These charts show the simulated impacts (1,000 replications) of being in custody rather than education immediately prior to the spell underway on turning 18. Impacts on Education/training, Employment, NEET and earnings (respective row order) are presented for males (left column) and females (right column). The lines in the charts show mean impacts estimated across all replications. The shaded areas show percentiles 2.5 and 97.5 of the simulated distribution.*