



UvA-DARE (Digital Academic Repository)

Sharp Signals of Boson Clouds in Black Hole Binary Inspirals

Baumann, D.; Bertone, G.; Stout, J.; Tomaselli, G.M.

DOI

[10.1103/PhysRevLett.128.221102](https://doi.org/10.1103/PhysRevLett.128.221102)

Publication date

2022

Document Version

Final published version

Published in

Physical Review Letters

[Link to publication](#)

Citation for published version (APA):

Baumann, D., Bertone, G., Stout, J., & Tomaselli, G. M. (2022). Sharp Signals of Boson Clouds in Black Hole Binary Inspirals. *Physical Review Letters*, 128(22), [221102]. <https://doi.org/10.1103/PhysRevLett.128.221102>

General rights

It is not permitted to download or to forward/distribute the text or part of it without the consent of the author(s) and/or copyright holder(s), other than for strictly personal, individual use, unless the work is under an open content license (like Creative Commons).

Disclaimer/Complaints regulations

If you believe that digital publication of certain material infringes any of your rights or (privacy) interests, please let the Library know, stating your reasons. In case of a legitimate complaint, the Library will make the material inaccessible and/or remove it from the website. Please Ask the Library: <https://uba.uva.nl/en/contact>, or a letter to: Library of the University of Amsterdam, Secretariat, Singel 425, 1012 WP Amsterdam, The Netherlands. You will be contacted as soon as possible.

Sharp Signals of Boson Clouds in Black Hole Binary Inspirals

Daniel Baumann,^{1,2,3} Gianfranco Bertone^{1b},¹ John Stout,⁴ and Giovanni Maria Tomaselli^{1c}

¹Gravitation Astroparticle Physics Amsterdam (GRAPPA), University of Amsterdam, Amsterdam 1098 XH, Netherlands

²Center for Theoretical Physics, National Taiwan University, Taipei 10617, Taiwan

³Physics Division, National Center for Theoretical Sciences, Taipei 10617, Taiwan

⁴Department of Physics, Harvard University, Cambridge, Massachusetts 02138, USA

 (Received 1 March 2022; revised 25 March 2022; accepted 27 April 2022; published 2 June 2022)

Gravitational waves (GWs) are an exciting new probe of physics beyond the standard models of gravity and particle physics. One interesting possibility is provided by the so-called “gravitational atom,” wherein a superradiant instability spontaneously forms a cloud of ultralight bosons around a rotating black hole. The presence of these boson clouds affects the dynamics of black hole binary inspirals and their associated GW signals. In this Letter, we show that the binary companion can induce transitions between bound and unbound states of the cloud, effectively “ionizing” it, analogous to the photoelectric effect in atomic physics. The orbital energy lost in this process can overwhelm the losses due to GW emission, so that ionization drives the inspiral rather than merely perturbing it. We show that the ionization power contains sharp features that lead to distinctive “kinks” in the evolution of the emitted GW frequency. These discontinuities are a unique signature of the boson cloud, and observing them would not only constitute a detection of the ultralight boson itself, but also provide direct information about its mass and the state of the cloud.

DOI: [10.1103/PhysRevLett.128.221102](https://doi.org/10.1103/PhysRevLett.128.221102)

The dynamics of black hole mergers in vacuum is a precise prediction of general relativity (GR), which has been confirmed by the gravitational wave (GW) observations of the LIGO/Virgo Collaboration [1,2]. The robustness of these predictions implies that looking for any deviations is an interesting test for physics beyond the standard models of gravity and particle physics [3,4]. Such signals would arise if new environmental effects modify the dynamics of the inspiral. For example, if dark matter clusters around black holes, it would affect the inspiral through dynamical friction [5,6].

Another interesting class of new physics, that can be probed with future GW observations, are *ultralight bosons* with masses in the range of $10^{-20} - 10^{-10}$ eV and very weak couplings to ordinary matter. Such weakly coupled particles arise in the string landscape as ultralight axions [7–10] and are also interesting dark matter candidates [11]. However, these new hidden sectors do not necessarily have a large cosmic abundance, which makes detecting them an interesting challenge.

Regardless of how these bosons couple to the standard model, however, they must gravitate. This universal coupling, plus the spate of current and upcoming gravitational wave detectors, has generated a lot of interest in using black holes, either in isolation or in an inspiral, to discover weakly coupled new physics [3,4,12,13]. A particularly promising avenue relies on black hole superradiance [14], where a rapidly rotating black hole can spontaneously shed mass and angular momentum to form a large cloud of these ultralight bosons, independent of their prior cosmic

abundance. The efficiency of this process depends on the ratio of the black hole’s gravitational radius to the Compton wavelength of the field, the so-called gravitational fine structure constant:

$$\alpha \equiv \frac{r_g}{\lambda_c} = \mu M, \quad (1)$$

where μ is the boson mass, M is the mass of the black hole, and we use natural units, with $\hbar = c = G = 1$. For $\alpha \sim \mathcal{O}(0.01 - 0.1)$, the cloud both grows quickly and is long lived (on astrophysical timescales).

The structure of this boson cloud is nearly identical to that a hydrogen atom and the system is often called a *gravitational atom*. While superradiance naturally prepares the cloud in *one* of these states, the others can be excited when this atom participates in a binary inspiral (see Fig. 1).

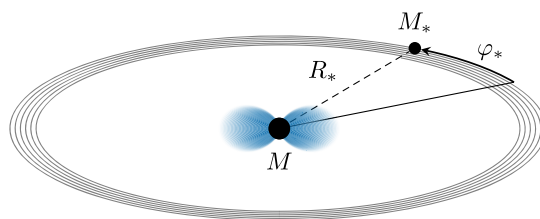


FIG. 1. Schematic diagram of a gravitational atom in an equatorial binary inspiral. The position of the companion with mass M_* can be described by the distance between the two black holes, R_* , and the polar angle φ_* .

The gravitational atom is, thus, subject to a quasiperiodic perturbation whose frequency slowly increases in time. The strength of this nearly periodic perturbation can be resonantly enhanced whenever its frequency matches the difference between two (or more) states of the cloud [15,16]. In this Letter and its companion [17], we study bound-to-unbound state transitions of the gravitational atom, which allow part of the cloud to escape the gravity of the black hole. We refer to this process as “ionization,” in analogy to the photoelectric effect in atomic physics. The backreaction of the ionization process strongly affects the dynamics of the inspiral. As we will show, the departure from the GR predictions is significant, with the inspiral typically becoming much faster. This backreaction can be interpreted as dynamical friction acting on the body passing through the cloud [18–20]. Despite acting continuously as the separation shrinks, the effect contains sharp features carrying details on the energy structure of the cloud and the nature of the putative new particles. We will show how these sharp features are imprinted in the GW signals emitted by the binary.

Gravitational atoms.—Consider a real scalar field Φ of mass μ , for simplicity, without self-interactions. Using the ansatz $\Phi(t, \mathbf{r}) = [\psi(t, \mathbf{r})e^{-i\mu t} + \text{H.c.}]/\sqrt{2\mu}$, the Klein-Gordon equation in the Kerr background becomes an effective Schrödinger equation [15,21]:

$$i \frac{\partial}{\partial t} \psi(t, \mathbf{r}) = \left(-\frac{1}{2\mu} \nabla^2 - \frac{\alpha}{r} + \dots \right) \psi(t, \mathbf{r}), \quad (2)$$

where we have neglected subleading terms in α . The Schrödinger equation (2) has hydrogenic energy eigenstates, which can be divided into two qualitatively distinct classes.

The first are the *bound states* $|n\ell m\rangle$, labeled by their total and azimuthal angular momentum ℓ and m , respectively, and the principal quantum number n . The bound state wave functions take the hydrogenic form $\psi_{n\ell m}(t, \mathbf{r}) = R_{n\ell}(r) Y_{\ell m}(\theta, \phi) e^{-i(\omega_{n\ell m} - \mu)t}$, where $\mathbf{r} \equiv (r, \theta, \phi)$ denote the Fermi frame which, at leading order in α , coincides with the Boyer-Lindquist coordinates of the black hole. As for the hydrogen atom, the wave function varies over length scales set by the “Bohr radius” $r_c \equiv (\mu\alpha)^{-1}$ and decays exponentially as $r \rightarrow \infty$. For small α , the frequencies are [21–23]

$$\omega_{n\ell m} = \mu \left(1 - \frac{\alpha^2}{2n^2} + \mathcal{O}(\alpha^4) \right) + i\Gamma_{n\ell m}, \quad (3)$$

where the imaginary part $\Gamma_{n\ell m} \propto \mu\alpha^{4\ell+5}$ comes from the dissipative nature of the black hole’s event horizon. This imaginary part permits the superradiant growth or decay of the bound states, depending on whether they rotate faster or slower than the horizon. We work in a range of parameter space in which these growth rates are fast enough to ensure

the growth of the cloud on astrophysical timescales yet are slow enough that they can be ignored when focusing the timescales relevant to the binary inspiral. In this approximation, the bound states are described by a discrete set of hydrogenic energies $\epsilon_{n\ell m} = \text{Re}[\omega_{n\ell m}] - \mu$. By convention, these states are unit-normalized $\langle n\ell m | n'\ell'm' \rangle = \delta_{nn'} \delta_{\ell\ell'} \delta_{mm'}$, where the inner product is defined in the standard way.

The second class of eigenstates are the *unbound states* $|\epsilon; \ell m\rangle$, which are labeled by the non-negative energy $\epsilon = \omega - \mu \geq 0$, total angular momentum ℓ , and azimuthal angular momentum m . In contrast to the bound states, the unbound wave functions $\psi_{\epsilon; \ell m}(t, \mathbf{r}) = R_{\epsilon; \ell}(r) Y_{\ell m}(\theta, \phi)$ have purely real frequencies and asymptote to spherical waves with wave number k , such that $\epsilon = k^2/(2\mu)$, as $r \rightarrow \infty$. By convention, these unbound states are normalized such that $\langle \epsilon; \ell m | \epsilon'; \ell'm' \rangle = \delta(\epsilon - \epsilon') \delta_{\ell\ell'} \delta_{mm'}$ and are orthogonal to every bound state.

Ionization.—An inspiraling companion with mass $M_* \equiv qM$, orbital separation R_* , and true anomaly φ_* (see Fig. 1) perturbs the Schrödinger equation (2) by its gravitational potential:

$$V_*(t, \mathbf{r}) = -q\alpha \sum_{\ell, m} \sum_{\substack{r_< \\ r_>}}^{\ell} \epsilon_{\ell m} e^{-im\varphi_*} Y_{\ell m}(\theta, \phi), \quad (4)$$

where the sum ranges over $\ell \geq 2$ and $|m| \leq \ell$ (we explicitly exclude both the $\ell = 0$ and $\ell = 1$ contributions, as the latter is fictitious [15] and neither mediate level transitions) and $r_>$ ($r_<$) denotes the larger (smaller) of r and R_* . We restrict to inspirals that take place entirely within the equatorial plane, so that the *tidal moments* simplify: $\epsilon_{\ell m} = [4\pi/(2\ell + 1)] Y_{\ell m}^*[(\pi/2), 0]$, where the superscript $*$ denotes complex conjugation. The gravitational perturbation (4) is *quasiperiodic*, with both the orbital frequency [by convention, the positive (negative) sign denotes an orbit in which the companion corotates (counterrotates) with the cloud] $\Omega(t) = \pm d\varphi_*/dt$ and the orbital separation $R_*(t)$ slowly evolving as the parent black hole and companion merge. For simplicity, we consider quasicircular orbits, for which $d\Omega/dt = \gamma(\Omega/\Omega_0)^{11/3}$, where the *chirp rate* γ is defined with respect to the reference frequency Ω_0 as $\gamma = (96/5)qM^{5/3}\Omega_0^{11/3}/(1+q)^{1/3}$. Throughout the inspiral phase, however, this frequency evolves very slowly $\gamma \ll \Omega^2$, which allows us to linearize the frequency $\Omega(t) \approx \Omega_0 + \gamma t$ in the regime we are interested in. The cloud is, thus, subject to a gravitational perturbation whose fundamental frequency $\Omega(t)$ slowly increases in time.

In this Letter, we study how the cloud and binary inspiral evolve when this driving frequency is high enough to efficiently mediate transitions from the bound to unbound states of the atom, resonantly unbinding or *ionizing* the cloud from the black hole. We first assume that the system initially occupies a single bound state

$|n_b \ell_b m_b\rangle$ whose energy we denote by ϵ_b . The companion (4) connects this state to the continuum of unbound states $|\epsilon; \ell m\rangle$ via a matrix element with definite frequency $\langle \epsilon; \ell m | V_*(t) | n_b \ell_b m_b \rangle = \eta_{\ell m}(\epsilon; t) \exp[-i(m - m_b)\varphi_*(t)]$, where the amplitude $\eta_{\ell m}(\epsilon; t)$ inherits its slow time dependence from the companion's radial motion.

As described more thoroughly in Ref. [17], at weak couplings $q\alpha \ll 1$, the evolution of the system can be divided into three stages, centered about the time t_0 where the frequency of the perturbation matches the minimum energy difference between the initial state and the continuum, $\pm(m - m_b)\Omega(t_0) + \epsilon_b = 0$. Far before this time, $\sqrt{\gamma}(t - t_0) \ll -1$, the perturbation oscillates too slowly to provide enough energy to excite the bound state into the continuum, and so the cloud remains bound. Far after this time, $\sqrt{\gamma}(t - t_0) \gg 1$, the companion orbits quickly enough to ionize the cloud and the cloud steadily depletes. For intermediate times, $\sqrt{\gamma}|t - t_0| \lesssim 1$, there are transient phenomena which interpolate between these two regimes over a timescale that is fast compared to that of the inspiral and set by $\gamma^{-1/2}$.

The steady depletion of the cloud is well approximated by applying Fermi's golden rule, which states the transition rate per unit phase space (energy) into unbound states with angular quantum numbers ℓ and m is

$$d\Gamma_{\ell m} = d\epsilon |\eta_{\ell m}(\epsilon; t)|^2 \delta[\epsilon - \epsilon_b \mp (m - m_b)\Omega(t)]. \quad (5)$$

While Eq. (5) is typically derived by assuming neither $\Omega(t)$ nor $\eta_{\ell m}(\epsilon; t)$ evolve in time, it is consistent [17] to apply it here as long as $q\alpha \ll 1$ and we ignore any transient phenomena. Summing this rate over *all* unbound states that the cloud can transition into yields an equation for the mass ejected from the cloud by ionization:

$$\left. \frac{dM_c}{dt} \right|_{\text{ion}} = -M_c \sum_{\ell, m} |\eta_{\ell m}(\epsilon_*^{(m)}; t)|^2 \Theta(\epsilon_*^{(m)}), \quad (6)$$

where $\epsilon_*^{(m)}(t) = \epsilon_b + g\Omega(t)$ is the energy of the state the cloud ionizes into and $\Theta(\epsilon)$ is the Heaviside step function. We also define $g \equiv \pm(m - m_b)$, where the positive (negative) sign denotes corotating (counterrotating) orbits.

The companion must do work to ionize the cloud. The *ionization power*, i.e., the energy lost by the orbit per unit time due to ionization, is

$$P_{\text{ion}} = \frac{M_c(t)}{\mu} \sum_{\ell, m} g\Omega(t) |\eta_{\ell m}(\epsilon_*^{(m)}; t)|^2 \Theta(\epsilon_*^{(m)}). \quad (7)$$

In Fig. 2, we compare this ionization power to the energy lost due to GW emission,

$$P_{\text{GW}} = \frac{32}{5} \frac{q^2 M^2}{(1+q)^2} R_*^4 \Omega^6, \quad (8)$$

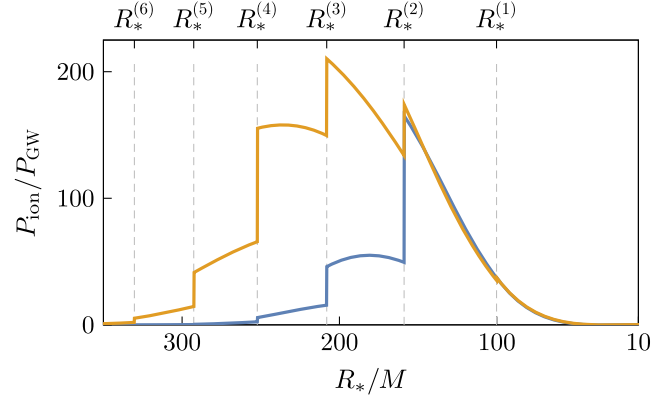


FIG. 2. Ratio between the energy (per unit time) lost due to ionization and due to GW emission for corotating (blue line) and counterrotating (orange line) orbits, with $\alpha = 0.2$ and $M_c/M = 0.01$ in a $|211\rangle$ state.

ignoring cloud depletion for both corotating and counterrotating orbits, as a function of the binary separation R_* . We see that ionization is a *large* effect, as it takes energy from the binary orders of magnitude more efficiently than GWs, even with a conservative choice of the cloud's initial mass $M_{c,0}$.

Sharp features.—The most distinctive features in Fig. 2 are the *sharp jumps* in the ionization power at specific orbital separations

$$\frac{R_*^{(g)}}{M} = \alpha^{-2} [4g^2(1+q)n_b^4]^{1/3}, \quad g = 1, 2, \dots \quad (9)$$

These jumps arise in corotating (counterrotating) orbits, because, for each set of unbound states with azimuthal angular momentum $m > m_b$ ($m < m_b$), there is a frequency at which $\epsilon_*^{(m)} = 0$ and the companion can just begin to ionize the bound state $|n_b \ell_b m_b\rangle$ into that continuum. The values of $R_*^{(g)}$ in Eq. (9) correspond to the orbital separations at those frequencies.

These jumps appear sharp because $|\eta_{\ell m}(\epsilon; t)|^2$ is *finite* in the low-energy limit, $\epsilon \rightarrow 0$. This is due to the long-ranged nature of the gravitational potential, which localizes the low-energy unbound states about the black hole,

$$\lim_{\epsilon \rightarrow 0} R_{\epsilon; \ell}(r) = \sqrt{\frac{2\mu}{r}} J_{2\ell+1}(2\sqrt{2\mu ar}), \quad (10)$$

and forces them to have nonvanishing transition elements to the bound states [17]. The aforementioned transient phenomena that occur near the moments when $\epsilon_*^{(m)}(t) = 0$ soften this sharp behavior.

Scaling symmetry.—In the limit of small q , the ionization power (7) has an interesting scaling symmetry which allows us to determine the result for arbitrary parameters after it has been computed once for a fiducial set of

parameters. The radial wave functions $R_{n\ell}(r)$ and $R_{\epsilon;\ell}(r)$ depend on only the dimensionless variables $r/r_c = \alpha^2 r/M$ and $kr = \sqrt{2\mu\epsilon}r$, respectively. Moreover, the energy $\epsilon_*^{(m)}$ appearing in Eqs. (6) and (7) scales as α^3/M times a function of r/r_c . This means that, when evaluating the matrix elements $\eta_{\ell m}(\epsilon; t)$ at $\epsilon_*^{(m)}$, all the radial variables will scale as $\alpha^2 r/M$. The ionization power must then also scale homogeneously with α . By power counting, we find that

$$P_{\text{ion}} = \alpha^5 q^2 (M_c/M) \mathcal{P}(\alpha^2 R_*/M), \quad (11)$$

where \mathcal{P} is a universal function for each $|n_b \ell_b m_b\rangle$ that can be computed numerically.

Accretion.—If the companion is also a black hole, it will absorb some of the cloud as it passes through it. The capture cross section of an ultralight scalar field by a black hole has been computed in Refs. [24–26]. As the companion moves through the bulk of the cloud, $R_* \sim r_c$, it will accrete mass at a rate [17]

$$\frac{dM_*}{dt} = \mathcal{A}_* \rho, \quad (12)$$

with $\mathcal{A}_* = 16\pi M_*^2$ the horizon area of the companion, whose rotation we ignore for simplicity, and ρ the mass density of the medium. In addition to a sizable increase in its mass which enhances P_{ion} and P_{GW} , the companion also experiences a significant force as it absorbs momentum from the cloud.

Binary evolution.—To determine the impact of ionization and accretion on the binary inspiral, we numerically solve for the evolution of a few benchmark systems. We will focus on intermediate mass ratio binaries, with $q \ll 1$, for which the sharp features of the ionization can occur in band for a future space-based observatory like LISA. We solve for the separation R_* , the companion’s mass M_* , and the cloud’s mass M_c . As resonances between bound states happen only at specific discrete orbits [16], while ionization and accretion act continuously, we will ignore the former. Our solutions, therefore, should not be taken as a complete study of the system’s dynamics but rather as demonstrations of the impact that ionization and accretion can have on an inspiral.

The evolution of M_* and M_c is governed by mass conservation:

$$\frac{dM_*}{dt} = 16\pi M_*^2 \rho(\mathbf{R}_*), \quad (13)$$

$$\frac{dM_c}{dt} = -\frac{dM_*}{dt} - M_c \sum_{\ell, m} |\eta_{\ell m}(\epsilon_*^{(m)}; t)|^2 \Theta(\epsilon_*^{(m)}), \quad (14)$$

where $\rho(\mathbf{R}_*) \equiv M_c |\psi|^2$ is the local density of the cloud at the position of the companion. For a real field Φ , the cloud is not axisymmetric, and, thus, we replace $\rho(\mathbf{R}_*)$ with its

average over an orbit. The second term on the right-hand side of Eq. (14) captures the mass loss due to ionization as defined in Eq. (6). The evolution of R_* follows from the conservation of energy:

$$\frac{qM^2 dR_*}{2R_*^2 dt} = -P_{\text{GW}} - P_{\text{ion}} - \left(\sqrt{MR_*} \mp \frac{mM}{\alpha} \right) \left(\frac{M}{R_*} \right)^{3/2} \frac{dq}{dt}, \quad (15)$$

where we have neglected terms that are subleading in q . The right-hand side of Eq. (15) includes the radiation reaction force from the emission of GWs and the friction caused by both ionization and accretion.

As illustrated in Fig. 2, P_{ion} can overwhelm P_{GW} for a wide range of separations. The evolution of the binary will then be *driven*, rather than simply perturbed, by the interaction with the cloud. The extra friction can dramatically shorten the merger time, and, generally, a “plunge” is observed as soon as P_{ion} overcomes P_{GW} .

Imprints in the GW signal.—The binary emits gravitational waves with frequency $f_{\text{GW}} = \Omega/\pi$, where $\Omega^2 = M/R_*^3$ for a circular Keplerian orbit. Distinct features in $R_*(t)$, therefore, become observable signatures in $f_{\text{GW}}(t)$ and, hence, the observed GW waveform.

Figure 3 shows the evolution of the GW frequency for corotating and counterrotating orbits, with a power-law rescaling that transforms the vacuum solution into a straight line. It is immediately apparent that the deviations from the vacuum solution are both *large* and feature distinctive *kinks*, which arise from the discontinuities in $P_{\text{ion}}(R_*)$ at the separations (9). These kinks are a unique signature of the boson cloud and carry significant information about the parameters of the system. From Eq. (9), the GW frequency at the kinks is

$$\begin{aligned} f_{\text{GW}}^{(g)} &= \frac{6.45 \text{ mHz}}{g} \left(\frac{10^4 M_\odot}{M} \right) \left(\frac{\alpha}{0.2} \right)^3 \left(\frac{2}{n_b} \right)^2 \\ &= \frac{33.5 \text{ mHz}}{g} \left(\frac{M}{10^4 M_\odot} \right)^2 \left(\frac{\mu}{10^{-14} \text{ eV}} \right)^3 \left(\frac{2}{n_b} \right)^2. \end{aligned} \quad (16)$$

In Fig. 3, we have chosen parameters such that these kinks occur in the range probed by future space-based GW detectors like LISA. This requires relatively large α for which the lifetime of the $|211\rangle$ state becomes a concern [16,17]. To account for this decay, we choose a small initial value for the mass of the cloud, $M_c/M = 10^{-3}$. It is possible to have smaller values of α if we simultaneously reduce M , although the degree to which this is possible is limited by the fact that $q = M_*/M$ must be small enough for our perturbative analysis to be valid. Measuring kinks at specific frequencies tells us about the state of the cloud and the mass of the field μ , especially if the black hole mass M can be measured with other parts of the signal.

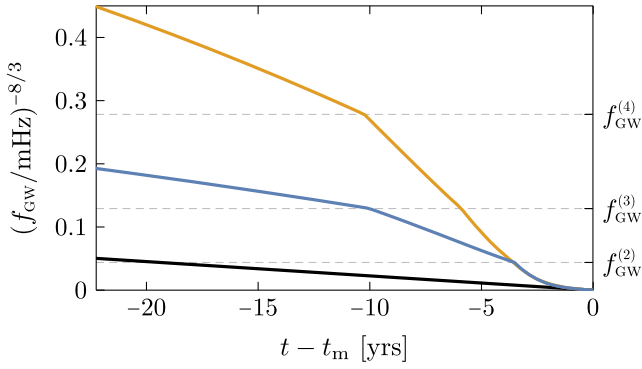


FIG. 3. Evolution of the GW frequency as a function of the time to merger, $t - t_m$, for $M = 10^4 M_\odot$ and $\alpha = 0.2$, with initial values of $R_* = 400 M$, $q = 10^{-3}$, and $M_c/M = 0.001$ in a $|211\rangle$ state. Shown are the results for corotating (blue line) and counterrotating (orange line) orbits, relative to the vacuum solution (black line).

Figure 3 presented the evolution of the system for a specific choice of parameters. In the regime of interest, $P_{\text{ion}} \gg P_{\text{GW}}$, the dependence on these parameters can be determined analytically using a scaling symmetry of the evolution equations. Neglecting other forces and changes in q and M_c throughout the inspiral, we can obtain an approximate equation for the evolution of f_{GW} under the effect of ionization only:

$$\frac{df_{\text{GW}}^{2/3}}{dt} \approx \frac{2}{\pi^{2/3}} \frac{P_{\text{ion}}}{qM^{5/3}}. \quad (17)$$

Using the ionization power's scaling behavior (11), we can write this as

$$\frac{dz^{2/3}}{d\tau} \approx 2\mathcal{P}(z^{-2/3}), \quad (18)$$

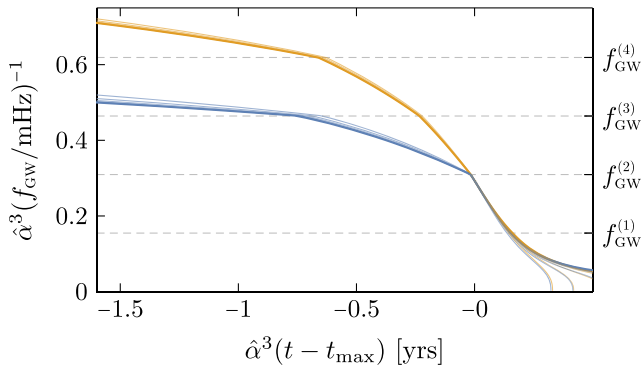


FIG. 4. Evolution of the (inverse) frequency f_{GW} for $M = 10^4 M_\odot$ and $\alpha = 0.04, 0.08, \dots, 0.28$, with initial $q = 10^{-3}$ and $M_c/M = 0.01$ in a $|211\rangle$ state. The axes are rescaled according to Eq. (19), with $\hat{\alpha} \equiv \alpha/0.2$. The curves have been horizontally shifted to match at $t = t_{\text{max}}$, which has been chosen close to the peak of $P_{\text{ion}}/P_{\text{GW}}$. Shown are the results for corotating (blue line) and counterrotating (orange line) orbits.

where we have defined the dimensionless variables $z \equiv (M/\alpha^3)\pi f_{\text{GW}}$ and $\tau \equiv \alpha^3 q M_c t / M^2$. The solution can, therefore, be written as

$$f_{\text{GW}}(t) = \frac{\alpha^3}{M} f[\tau(t)], \quad (19)$$

where $f(\tau)$ is a universal function that depends on the shape of P_{ion} for a given state $|n_b \ell_b m_b\rangle$ of the cloud. The region of validity of this formula increases with larger M_c . In Fig. 4, we confirm that the solutions of the full system of Eqs. (13)–(15) indeed are described by a universal shape, when both f_{GW} and t are appropriately rescaled. The curves depart from each other only when the approximation $P_{\text{ion}} \gg P_{\text{GW}}$ fails (that is, very close and very far from the merger) or when corrections due to the varying q and q_c become important.

Conclusions.—The dynamical impact of superradiant clouds on binary inspirals is phenomenologically rich. In this Letter, we studied a new effect—ionization—that is important when the binary separation is comparable to the size of the cloud. The orbital energy lost in the process can overwhelm the losses due to GW emission, so that ionization drives the inspiral rather than just perturbing it. Although it acts continuously throughout the inspiral, ionization also leaves sharp, distinct signatures in the frequency evolution of the system which carry direct information about the state of the cloud and the mass of the scalar field.

Our analysis made a number of simplifying assumptions. Most notably, we neglected the resonant bound-to-bound transitions mediated by the gravity of the companion. Their inclusion is necessary to understand the history of the system and the evolution of the state of the cloud. Moreover, while we restricted ourselves to quasicircular equatorial orbits, interesting effects could arise in the general case, such as orbital plane precession or eccentricification. A combined treatment of all of these effects will serve as a starting point to model gravitational waveforms involving gravitational atoms and devise suitable strategies to discover them with upcoming GW detectors.

D. B. and J. S. are grateful to Horng Sheng Chia and Rafael Porto for previous collaborations on this topic. D. B. receives funding from a VIDI grant of the Netherlands Organisation for Scientific Research (NWO) and is part of the Delta-ITP consortium. D. B. is also supported by a Yushan Professorship at National Taiwan University funded by the Ministry of Science and Technology (Taiwan). J. S. is supported by NASA Grant No. 80NSSC20K0506.

- [1] B. Abbott *et al.* (LIGO and Virgo Collaborations), Observation of Gravitational Waves from a Binary Black Hole Merger, *Phys. Rev. Lett.* **116**, 061102 (2016).

- [2] R. Abbott *et al.* (LIGO, Virgo, and KAGRA Collaborations), Tests of general relativity with GWTC-3, [arXiv:2112.06861](#).
- [3] L. Barack *et al.*, Black holes, gravitational waves and fundamental physics: A roadmap, *Classical Quantum Gravity* **36**, 143001 (2019).
- [4] G. Bertone *et al.*, Gravitational wave probes of dark matter: Challenges and opportunities, *SciPost Phys. Core* **3**, 007 (2020).
- [5] B. J. Kavanagh, D. A. Nichols, G. Bertone, and D. Gaggero, Detecting dark matter around black holes with gravitational waves: Effects of dark matter dynamics on the gravitational waveform, *Phys. Rev. D* **102**, 083006 (2020).
- [6] A. Coogan, G. Bertone, D. Gaggero, B. Kavanagh, and D. Nichols, Measuring the dark matter environments of black hole binaries with gravitational waves, *Phys. Rev. D* **105**, 043009 (2022).
- [7] A. Arvanitaki, S. Dimopoulos, S. Dubovsky, N. Kaloper, and J. March-Russell, String axiverse, *Phys. Rev. D* **81**, 123530 (2010).
- [8] V. Mehta, M. Demirtas, C. Long, D.J.E. Marsh, L. McAllister, and M. Stott, Superradiance in string theory, *J. Cosmol. Astropart. Phys.* **07** (2021) 033.
- [9] V. Mehta, M. Demirtas, C. Long, D.J.E. Marsh, L. McAllister, and M. Stott, Superradiance exclusions in the landscape of type IIB string theory, [arXiv:2011.08693](#).
- [10] M. Demirtas, C. Long, L. McAllister, and M. Stillman, The Kreuzer-Skarke axiverse, *J. High Energy Phys.* **04** (2020) 138.
- [11] L. Hui, J. P. Ostriker, S. Tremaine, and E. Witten, Ultralight scalars as cosmological dark matter, *Phys. Rev. D* **95**, 043541 (2017).
- [12] E. Barausse *et al.*, Prospects for fundamental physics with LISA, *Gen. Relativ. Gravit.* **52**, 81 (2020).
- [13] H. S. Chia, Probing particle physics with gravitational waves, Ph.D. thesis, Amsterdam University, 2020, [arXiv:2012.09167](#).
- [14] R. Brito, V. Cardoso, and P. Pani, *Superradiance: New Frontiers in Black Hole Physics*, Lecture Notes in Physics Vol No. 971 (Springer Nature, Switzerland, 2020), p. 1.
- [15] D. Baumann, H. S. Chia, and R. A. Porto, Probing ultralight bosons with binary black holes, *Phys. Rev. D* **99**, 044001 (2019).
- [16] D. Baumann, H. S. Chia, R. A. Porto, and J. Stout, Gravitational collider physics, *Phys. Rev. D* **101**, 083019 (2020).
- [17] D. Baumann, G. Bertone, J. Stout, and G. M. Tomaselli, Ionization of gravitational atoms, [arXiv:2112.14777](#) [*Phys. Rev. D* (to be published)].
- [18] J. Zhang and H. Yang, Dynamic signatures of black hole binaries with superradiant clouds, *Phys. Rev. D* **101**, 043020 (2020).
- [19] D. Traykova, K. Clough, T. Helfer, P. Ferreira, E. Berti, and L. Hui, Dynamical friction from scalar dark matter in the relativistic regime, *Phys. Rev. D* **104**, 103014 (2021).
- [20] L. Annulli, V. Cardoso, and R. Vicente, Stirred and shaken: Dynamical behavior of boson stars and dark matter cores, *Phys. Lett. B* **811**, 135944 (2020).
- [21] S. Dolan, Instability of the massive Klein-Gordon field on the Kerr spacetime, *Phys. Rev. D* **76**, 084001 (2007).
- [22] S. Detweiler, Klein-Gordon equation and rotating black holes, *Phys. Rev. D* **22**, 2323 (1980).
- [23] D. Baumann, H. S. Chia, J. Stout, and L. ter Haar, The spectra of gravitational atoms, *J. Cosmol. Astropart. Phys.* **12** (2019) 006.
- [24] W. Unruh, Absorption cross-section of small black holes, *Phys. Rev. D* **14**, 3251 (1976).
- [25] C. L. Benone, E. S. de Oliveira, S. R. Dolan, and L. C. B. Crispino, Absorption of a massive scalar field by a charged black hole, *Phys. Rev. D* **89**, 104053 (2014).
- [26] C. L. Benone and L. C. B. Crispino, Massive and charged scalar field in Kerr-Newman spacetime: Absorption and superradiance, *Phys. Rev. D* **99**, 044009 (2019).