



Paediatric heart failure-understanding the pathophysiology and the current role of cardiac biomarkers in clinical practice

McGinn, C., Casey, F., Watson, C., & Morrison, L. (2023). Paediatric heart failure-understanding the pathophysiology and the current role of cardiac biomarkers in clinical practice. *Cardiology in the Young*, 1-23. <https://doi.org/10.1017/S1047951123000331>

[Link to publication record in Ulster University Research Portal](#)

Published in:
Cardiology in the Young

Publication Status:
Published online: 23/03/2023

DOI:
[10.1017/S1047951123000331](https://doi.org/10.1017/S1047951123000331)

Document Version
Publisher's PDF, also known as Version of record

General rights
Copyright for the publications made accessible via Ulster University's Research Portal is retained by the author(s) and / or other copyright owners and it is a condition of accessing these publications that users recognise and abide by the legal requirements associated with these rights.

Take down policy
The Research Portal is Ulster University's institutional repository that provides access to Ulster's research outputs. Every effort has been made to ensure that content in the Research Portal does not infringe any person's rights, or applicable UK laws. If you discover content in the Research Portal that you believe breaches copyright or violates any law, please contact pure-support@ulster.ac.uk.

Paediatric heart failure – understanding the pathophysiology and the current role of cardiac biomarkers in clinical practice

Review

Cite this article: McGinn C, Casey FA, Watson C, and Morrison L (2023). Paediatric heart failure – understanding the pathophysiology and the current role of cardiac biomarkers in clinical practice. *Cardiology in the Young*, page 1 of 11. doi: [10.1017/S1047951123000331](https://doi.org/10.1017/S1047951123000331)


Received: 8 June 2022
Revised: 27 January 2023
Accepted: 18 February 2023

Keywords:

Heart failure; CHD; biomarker

Author for correspondence:

Claire McGinn, Wellcome-Wolfson Institute for Experimental Medicine, Queen's University Belfast, Belfast, UK. Tel: +447514958242. E-mail: cmcginn09@qub.ac.uk

Claire McGinn^{1,2} , Frank A. Casey^{1,2}, Chris Watson¹ and Louise Morrison²

¹Wellcome-Wolfson Institute for Experimental Medicine, Queen's University Belfast, Belfast, UK and ²Department of Paediatric Cardiology, Royal Belfast Hospital for Sick Children, Belfast, UK

Abstract

Introduction: Paediatric heart failure is a common clinical syndrome that may be experienced by children with congenital heart disease (CHD) and/or cardiomyopathy. It is characterised by clinical signs/symptoms which reflect the underlying pathophysiology based on one of three main clinical states: Pulmonary over-circulation, pressure overload, and ventricular failure. Current diagnosis relies on clinical assessment and echocardiogram imaging as cardiac biomarkers has been predominantly scientific to date. This review provides a comprehensive overview of paediatric heart failure pathophysiology and considers the available evidence for cardiac biomarkers in this setting. **Methods:** A literature review was completed using MEDLINE ALL, EMBASE, and PubMed on 10th November, 2022. Search terms included biomarkers, heart failure, heart defects, congenital heart disease, fontan circulation, single ventricle circulation, cardiomyopathy, and child. This allowed the identification of individual cardiac biomarkers which are the focus of this review. These included NT-proBNP, MR-proANP, MR-proADM, troponin, sST2, galectin 3, and growth differentiation factor-15. **Results:** Paediatric studies have established reference ranges for NT-proBNP and troponin for children with structurally normal hearts. Of all the biomarkers reviewed, NT-proBNP appears to correlate most closely with symptoms of heart failure and ventricular dysfunction on echocardiogram. However, there remains limited longitudinal data for NT-proBNP, and no validated reference ranges for patients with CHD and/or cardiomyopathy. None of the other biomarkers reviewed were consistently superior to NT-proBNP. **Conclusion:** Further large paediatric studies of patients with heart failure are needed to validate NT-proBNP in CHD and to evaluate the role of novel biomarkers in specific types of CHD, e.g. single ventricle physiology.

Paediatric heart failure is defined by the International Society for Heart & Lung Transplantation (ISHLT) as “a clinical and pathophysiologic syndrome that results from ventricular dysfunction, volume, or pressure overload, alone or in combination”.¹ Kantor et al describe it as “as the failure of the heart to supply blood to either systemic or pulmonary circulation at an appropriate rate of flow or to receive venous return at an appropriate filling pressure, resulting in adverse effects on the heart, the circulation, and the patient”.²

In high-income countries, paediatric heart failure is primarily caused by congenital heart disease (CHD) or cardiomyopathy. In low- and middle-income countries, rheumatic heart disease and infective endocarditis remain the most common causes of paediatric heart failure. It is important to understand the background pathophysiology to paediatric heart failure before considering the role of various plasma biomarkers in this disease process. In clinical medicine, we routinely measure various plasma components which have an active role in the body to diagnose and monitor a patient's health. In adult patients, cardiac biomarkers are recommended in the diagnosis of heart failure and to aid clinical management. However, in paediatric patients their use has remained mostly scientific as a result of differences in the underlying mechanism of cardiac dysfunction and influence of age affecting the assay levels.

This review provides a comprehensive overview of paediatric heart failure caused by CHD and cardiomyopathy and considers the available evidence for cardiac biomarkers in this complex, multifactorial condition.

A literature review was completed using MEDLINE ALL, EMBASE, and PubMed on 10th November 2022. Search terms included biomarkers, heart failure, heart defects, CHD, Fontan circulation, single ventricle circulation, cardiomyopathy, and child.

© The Author(s), 2023. Published by Cambridge University Press. This is an Open Access article, distributed under the terms of the Creative Commons Attribution licence (<http://creativecommons.org/licenses/by/4.0/>), which permits unrestricted re-use, distribution and reproduction, provided the original article is properly cited.

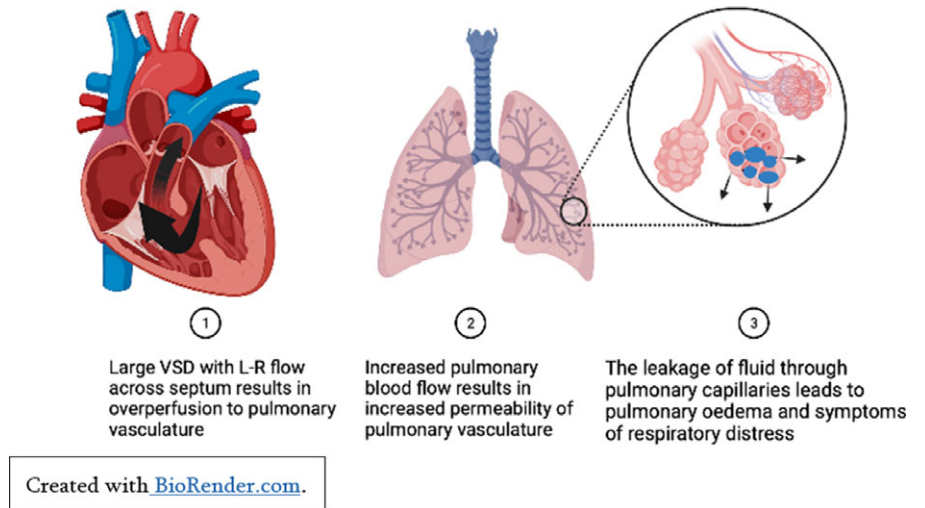


Figure 1. Pulmonary over-perfusion secondary to left to right shunt.

Paediatric heart failure pathophysiology

Pulmonary over-perfusion

Children with significant left to right shunting of blood secondary to congenital cardiac conditions such as large septal defects and persistent ductus arteriosus may experience clinical heart failure secondary to pulmonary over-circulation (See Figure 1). Significant atrioventricular valvar regurgitation may also cause increased volume overload in the atria and exacerbate pulmonary over-circulation. For affected infants, the reduction in pulmonary vascular resistance a few weeks after birth results in symptoms of respiratory distress, failure to thrive, and recurrent lower respiratory tract infections. Importantly, whilst these children may experience significant comorbidities secondary to congestive heart failure, their ventricular function is usually well preserved, and they will make a good recovery post-surgical repair.³

Pressure overload

Children with significant left-sided cardiac obstructions may show signs of heart failure secondary to reduced cardiac output. Critical aortic stenosis or neonatal coarctation of the aorta both put abnormal pressure on the left ventricle, cause left ventricular remodelling, and reduced ventricular function if untreated (See Figure 2).⁴ Patients with hypertrophic cardiomyopathy can develop left ventricular hypertrophy secondary to marked fibrosis and disarray of cardiac myocytes. For some patients, this causes left ventricular outflow tract obstruction, subsequent pressure overload, and heart failure symptoms.⁵

Pump failure

Ventricular dysfunction can result from ischaemic injury, arrhythmias, and myocardial failure which leads to systemic and/or pulmonary hypoperfusion. Ischaemic myocardial injury in children is caused by conditions such as myocarditis, Kawasaki disease, and abnormalities of the coronary arteries. Ischaemia causes ventricular remodelling and reduced ventricular pump function.

Children with single ventricle physiology may also experience pump failure during their staged palliation or following the completion of Fontan circulation. This is a result of reliance on the morphological right ventricle to maintain the systemic circulation and subsequent ventricular dysfunction over time.

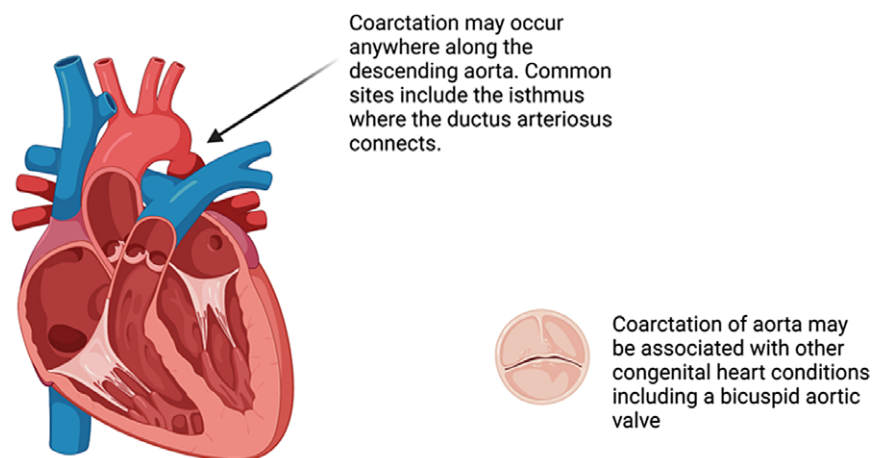
Cardiomyopathies in children cause atrial and ventricular remodelling which in turn affects pump function.⁶ Dilated cardiomyopathy may be inherited, acquired, or associated with autoimmune and metabolic conditions.⁷ Dilated cardiomyopathy is characterised by ventricular remodelling and haemodynamic overload as a result of reduced sarcomere contractility and increased ventricular volumes to maintain cardiac output (See Figure 3). This progressive ventricular dilatation leads to tricuspid and mitral valve insufficiency which further reduces systolic function, increases ventricular wall stress and myocardial injury, and contributes to ventricular dysfunction and pump failure.⁸

Role of biomarkers

Current adult NICE guidelines advise measuring NT-proBNP as the first-line investigation in suspected heart failure because of its high diagnostic accuracy. Similarly, cardiac troponin I and T are recommended by NICE for diagnosis of acute coronary syndrome and screening of chest pain. However, the current ISHLT paediatric guidelines advise brain natriuretic peptide/NT-proBNP can be used as an adjunctive marker in the integrated evaluation and monitoring of children with known heart failure but should not be used as a stand-alone test for diagnosis.¹ Therefore, cardiac biomarkers are routinely used in adults but not in paediatric patients. This is due to the complex, multifactorial mechanism of heart failure in children and the limited number of large paediatric research studies. Given that heart failure may be the first presentation of structural heart disease in children,⁹ and is often a complicated clinical state to monitor, a widely available blood biomarker to aid diagnosis and prognosis would improve outcomes in paediatric patients as it has in adults.

Natriuretic peptides

Atrial natriuretic peptide and brain natriuretic peptide are primarily produced in cardiac cells, namely atrial and ventricular cardiomyocytes. The cardiac natriuretic hormones are synthesised by cardiomyocytes as prohormones, i.e. proANP and proBNP. They are then split into two fragments at the point of secretion: the inactive precursor, i.e. NT-proANP and NT-proBNP, and the active hormone, i.e. atrial natriuretic peptide and brain natriuretic peptide.¹⁰



Created with [BioRender.com](https://www.biorender.com).

Figure 2. Pressure overload secondary to coarctation of aorta.

The main mechanical stimulus for atrial natriuretic peptide and brain natriuretic peptide secretion is atrial and ventricular distension respectively, although studies suggest multiple other proteins/hormones can promote secretion including endothelin-1, α -adrenergic agonists, and angiotensin II, glucocorticoids, vasopressin, growth factors and cytokines.¹¹

Both atrial natriuretic peptide and brain natriuretic peptide bind to natriuretic peptide receptor-A (NPR-A or guanylyl cyclase-A). They exert similar effects within target tissues namely they reduce vascular tone, increase electrolyte and water excretion, functionally antagonise the renin angiotensin aldosterone system (RAAS) and have antifibrotic and antihypertrophic effects.¹²

Brain natriuretic peptide and NT-proBNP

Early studies of paediatric heart failure in CHD and cardiomyopathy focused on brain natriuretic peptide measurements but this has been widely overtaken by focusing on brain natriuretic peptide's precursor NT-proBNP given its longer half-life and stability.¹³

NT-proBNP is the most widely studied cardiac biomarker in paediatric heart failure and although it is influenced by age, sex and underlying cardiac condition, it appears to be the most sensitive and specific biomarker of cardiac dysfunction available. In healthy children, NT-proBNP levels are highest in the first year of life and then decrease steadily throughout childhood.^{14,15} Roche have generated reference values (see Table 1) for NT-proBNP based on the Albers et al study published in 2006 which included 408 participants. These values can be applied to healthy children with structurally normal hearts to aid interpretation of NT-proBNP levels. The LIFE Child study included 2522 children aged 3 months to 18 years and determined reference ranges based on 97.5th percentiles for healthy children. They also compared these to the study by Albers et al.¹⁶ They supported the previous findings that NT-proBNP is elevated in the first year of life and demonstrated a steady decrease in NT-proBNP levels during childhood to adult levels as the child reaches puberty. Given their larger sample population, they had less variability than Albers et al and may therefore be worth considering as the most accurate reference ranges for 97.5th percentiles of NT-proBNP in healthy children based on age.

Table 1. Roche assay NT-proBNP reference ages for healthy children based on age⁽¹⁶⁾

| Age (years) | Number | NT-proBNP (ng/L) | |
|-------------|--------|------------------|-------------------|
| | | 75th percentile | 97.5th percentile |
| 1–3 | 13 | 231 | 320 |
| 4–6 | 21 | 113 | 190 |
| 7–9 | 32 | 94 | 145 |
| 10 | 11 | 73 | 112 |
| 11 | 69 | 93 | 317 |
| 12 | 21 | 95 | 186 |
| 13 | 23 | 114 | 370 |
| 14 | 18 | 68 | 363 |
| 15 | 24 | 74 | 217 |
| 16 | 24 | 85 | 206 |
| 17 | 24 | 71 | 135 |
| 18 | 12 | 53 | 115 |

Both Albers et al and the LIFE child study highlight that females have higher baseline NT-proBNP than males of the same age.

Whilst it is useful to establish reference ranges for NT-proBNP in healthy children based on age and sex, we must consider the impact of CHD on baseline levels of NT-proBNP. This is because studies suggest that the presence of structural cardiac disease impacts baseline NT-proBNP levels for individual patients and therefore the healthy children reference ranges cannot be relied on for similarly aged children with a structural abnormality.

To improve our understanding of how to interpret NT-proBNP levels in paediatric patients, we must first consider the clinical indication or need for this biomarker. In adult patients, elevated NT-proBNP levels aid diagnosis of heart failure in primary and secondary care. In children, heart failure is multi-factorial and may mimic other pathologies, e.g. respiratory or infectious conditions. Therefore, NT-proBNP needs to be used with a clear clinical question before it can be considered as a diagnostic tool in paediatric

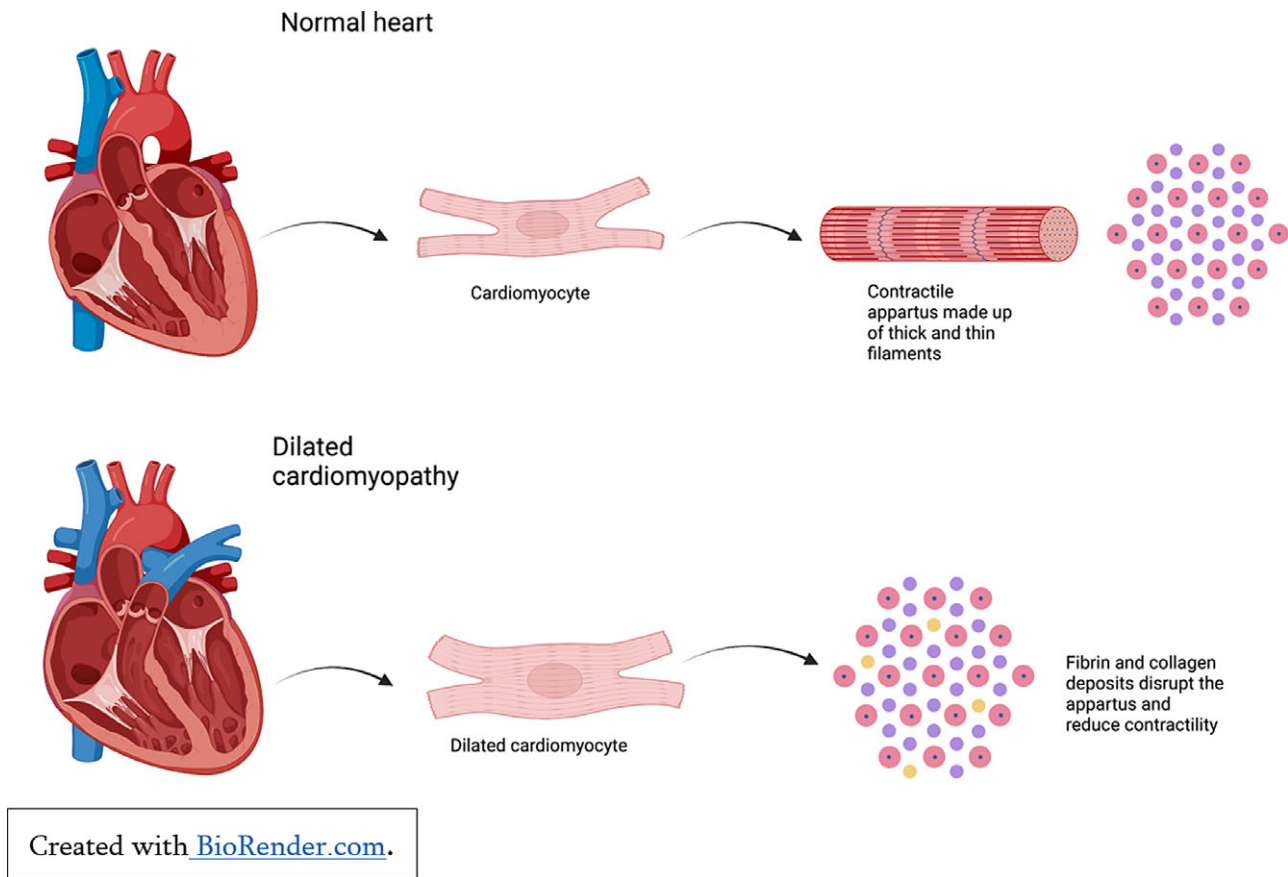


Figure 3. Cardiac remodelling in the setting of dilated cardiomyopathy.

heart failure. For example, one of the benefits of NT-proBNP in paediatrics is aiding diagnosis of heart failure at initial presentation. BNP and NT-proBNP are both significantly elevated in paediatric patients with respiratory distress secondary to cardiac disease compared to respiratory distress secondary to respiratory disease and healthy controls.^{17–19} Therefore, it could be used as a screening tool in the assessment of suspected heart failure in children who present with respiratory symptoms.

In CHD, brain natriuretic peptide/NT-proBNP is proven to correlate to symptoms of heart failure through Ross and/or NYHA classification systems.^{13,20,21} Importantly, NT-proBNP also correlates to objective measures of ventricular function on echocardiogram.^{22–24} A higher BNP/NT-proBNP is associated with increased symptoms of heart failure and reduced EF suggesting an increased likelihood of adverse outcomes.

However, because of the small number of paediatric patients who have been studied, there is not a clear definitive brain natriuretic peptide/NT-proBNP assay level that could be used as a reference value to diagnose heart failure in children with an underlying cardiac condition. As previously discussed, brain natriuretic peptide/NT-proBNP reference ranges based on age and sex are useful but we must consider if reference ranges for children with CHD and other comorbidities can be developed.

Salem et al, in their paper published in 2021, suggested on-admission brain natriuretic peptide at a cut-of-point 507.13 pg/ml has 95.5% sensitivity and 88% specificity for in-hospital mortality.²⁵ Despite lack of assay cut-off values in congenital cardiac disease, this suggests brain natriuretic peptide/NT-proBNP may be utilised as a prognostic indicator in known cardiac disease to

aid earlier identification of patients most at risk of adverse outcomes.

Similarly, an elevated brain natriuretic peptide/NT-proBNP preoperatively is associated with increased adverse events and/or increased circulatory support requirement post operatively.^{26,27} One study of 86 patients with complex cardiac disease scheduled for biventricular repair, of which most had evidence of mild heart failure symptoms, had preoperative brain natriuretic peptide levels measured before surgical intervention. They found that a preoperative brain natriuretic peptide level >60.9pg/ml was associated with increased risk of an adverse event.²⁶ This suggests brain natriuretic peptide has the potential to identify higher risk patients for adverse outcomes even if they are clinically stable preoperatively.

However, postoperative brain natriuretic peptide/NT-proBNP levels appear to be less useful in predicting adverse events and postoperative prognosis. This is likely because of the influence of acute cardiomyocyte injury causing an acute brain natriuretic peptide/NT-proBNP assay level rise which will recover and is an inaccurate assessment of potential ventricular failure in this period.^{28,29}

Role of NT-proBNP in single ventricle physiology

Brain natriuretic peptide/NT-proBNP is significantly elevated in patients with heart failure secondary to single ventricle physiology compared to children with similar anatomy who are not clinically in heart failure.^{30–32} Studies have found that brain natriuretic peptide/NT-proBNP baseline levels reduce with each subsequent stage of palliative surgery regardless of heart failure status.³³ It has been

suggested that once children have undergone their Fontan procedure, if they do not clinically have signs/symptoms of heart failure, there is no difference in their brain natriuretic peptide/NT-proBNP levels compared to a healthy age matched control.³⁴ Ghelani et al report a negative correlation between ejection fraction on cardiac MRI and NT-proBNP in Fontan patients in NYHA Class I-II. They suggested NT-proBNP >150 pg/ml may be used as an indicator of ventricular dysfunction.³⁵ Similarly, a study of 133 Fontan patients with a median age of 13.2 years found that the 27% of patients who had an adverse cardiac outcome had significantly higher NT-proBNP levels at recruitment and their NT-proBNP level correlated with severity of event.³⁶

This highlights the potential role of NT-proBNP as a prognostic indicator in Fontan patients given that it is elevated prior to clinical symptoms or signs of ventricular dysfunction and correlates to cardiac MRI findings.

Role of NT-proBNP in cardiomyopathy

A longitudinal study of paediatric patients with dilated cardiomyopathy found that NT-proBNP was useful in identifying the patients at recruitment who were most likely to deteriorate over time. In addition, within the group that would deteriorate, it was able to distinguish between those who would experience adverse events (heart transplant or death) and those who did not.³⁷

Studies show higher brain natriuretic peptide/NT-proBNP levels in children with heart failure secondary to dilated cardiomyopathy compared to CHD. This may be partly because of the increased prevalence of heart failure in the dilated cardiomyopathy subgroup and the associated systolic impairment which causes elevated brain natriuretic peptide/NT-proBNP compared to the effect of volume overload as seen in the CHD subgroups.^{21,22,38}

Role of NT-proBNP in haemodynamically significant shunts

In infants and young children, septal defects causing pulmonary overperfusion may result in symptomatic heart failure. NT-proBNP has been shown to positively correlate to shunt size in atrial and ventricular septal defects and to fall following closure correlating to reduced symptoms of heart failure.³⁹⁻⁴⁴ NT-proBNP has also been reported to be positively correlated with symptoms of heart failure and in-hospital mortality in haemodynamically significant shunts.⁴⁵ Clinically, NT-proBNP may be used to aid risk stratification and identification of children with more haemodynamically significant left to right shunts in known septal defects.

Correlation to imaging

An advantage of NT-proBNP would be if it could identify cardiac dysfunction or improvement before evident on imaging. Yet few studies have monitored serial brain natriuretic peptide/NT-proBNP levels in children with heart failure and compared them with cardiac function on echocardiogram. One study of 30 children which identified elevated NT-proBNP levels in children with heart failure secondary to dilated cardiomyopathy showed there was a significant difference in NT-proBNP levels following 1 week of medical heart failure therapy despite a non-significant change in echo findings.⁴⁶ Another small study which used tissue doppler echocardiogram imaging in children with cardiomyopathy secondary to ectopic atrial tachycardia concluded that tissue doppler imaging correlates better to elevated NT-proBNP levels than standard 2D echocardiogram parameters in terms of identifying early

diastolic dysfunction.⁴⁷ This highlights the potential role of brain natriuretic peptide/NT-proBNP in identifying myocardial changes and function before evident on 2D-echocardiography and the importance of larger scale research in this area.

Atrial natriuretic peptide

Atrial natriuretic peptide/MR-proANP has shown similar results in paediatric heart failure diagnosis and prognosis as brain natriuretic peptide/NT-proBNP. Atrial natriuretic peptide appears to be significantly elevated in patients with heart failure compared to healthy controls, and increased in a stepwise manner to reflect increasing Ross or NYHA class of heart failure. Studies show that as patients received treatment and their NYHA score improved, their atrial natriuretic peptide assay level reduced in keeping with similar studies focusing on brain natriuretic peptide.⁴⁸⁻⁵¹ Atrial natriuretic peptide values were found to be highest amongst children with cardiomyopathy compared to CHD.⁵⁰ When atrial natriuretic peptide and brain natriuretic peptide are compared directly in assessment of paediatric heart failure, the changes noted in brain natriuretic peptide/NT-proBNP are reflected by atrial natriuretic peptide/MR-proANP.^{21,23,52-54} This supports the belief that natriuretic peptides have a role in paediatric heart failure diagnosis and monitoring but that brain natriuretic peptide/NT-proBNP and atrial natriuretic peptide/MR-proANP perform similarly and there is therefore little merit in pursuing both as a biomarker of heart failure.

Troponin

Troponins are cardiac-specific proteins which make up thin filaments, which along with thick filaments, form the sarcomere which is the contractile apparatus of cardiomyocytes.⁵⁵ When cardiomyocytes are damaged, troponin is released into the blood stream and can be detected almost immediately following an ischaemic or hypoxic event.⁵⁶ Transient levels are also detected in chronic conditions which are understood to be secondary to necrosis. Chronic kidney disease is associated with increased serum troponin levels in the adult population due to reduced renal clearance and continuous myocardial damage from exposure to uraemic and other renally cleared toxins.⁵⁷

Troponin I and troponin T are established highly sensitive biomarkers of acute myocardial injury and are used widely in the diagnosis and monitoring of acute coronary syndrome in the adult population.^{56,58} Troponin I and troponin T perform similarly in adult studies assessing acute myocardial events⁵⁹ and are both used in the paediatric studies in this review.

In paediatric patients, ischaemic cardiac disease is rare and caused by inflammatory and structural abnormalities rather than atherosclerosis of the coronary arteries. Therefore, troponin has a role in aiding diagnosis of suspected inflammatory conditions, e.g. pericarditis or myocarditis, but the role in heart failure is less clear. Although troponin is not recommended as a biomarker for diagnosis of heart failure in adults in NICE guidelines, studies in adults suggest that increased troponin T levels are associated with greater risk of developing heart failure. Models using both BNP and troponin T are better at predicting future adverse events than BNP alone as they can identify evidence of myocyte damage in addition to myocyte stretch.⁵⁶

Bohn et al performed troponin T measurements using the Roche assay on 598 serum samples from healthy children aged 0-19 years. They found that troponin T levels initially increased

from 0 to 6 months of age and then decline steadily after 1 year old until adulthood.⁶⁰ The gender-specific 99th percentiles from 1 to <19 years were 14 ng/L for males and 11 ng/L for females. They proposed reference ranges for healthy children without structural cardiac disease based on these results (see Table 2).⁶⁰

It appears that children with CHD have a higher baseline troponin level than healthy children regardless of heart failure status.⁶¹ Studies of children with heart failure secondary to biventricular physiology have found a correlation between troponin levels and clinical and/or echocardiogram evidence of heart failure, yet when compared to BNP, troponin remains diagnostically and prognostically inferior.^{25,62} A small study of single ventricle patients which compared those with clinical evidence of heart failure to those without found that cTnI was unable to distinguish clinical heart failure in this cohort.³¹

Studies have also focused on troponin in children with evidence of pressure or volume overload. They describe that a rise in troponin levels is evident before changes on conventional or 2D-STE derived strain echocardiogram^{63,64} and that troponin levels were more elevated in the children with pressure overload syndromes compared to volume overload.⁶⁵ Whilst this suggests a potential role for troponin in identifying myocardial damage before evident on echocardiogram, it isn't clear if this has clinical impact.

Troponins have been measured in the perioperative period to assess short and long-term outcomes for children with CHD who undergo surgery. Studies suggest that preoperative troponin levels can be used as an adverse outcome indicator,²⁶ and patients with higher troponin levels are at an increased risk of adverse outcomes in the immediate postoperative period. Serial monitoring of postoperative troponin levels found that troponin levels correlated to degree of myocardial damage and were significantly higher in the immediate postoperative period, and in patients requiring increased levels of respiratory and inotropic support.^{66–71} It may be that a degree of this troponin rise is because of surgical manipulation on the myocardium.

Similarly, the available studies were unable to find a correlation between immediate postoperative troponin levels for children with CHD and long-term outcomes. This would suggest a degree of myocardial remodelling in children, and that even patients with severe ischaemic injury may recover some function if they survive the immediate postoperative period.^{72–74}

MR-proADM

Adrenomedullin is a peptide hormone secreted by endothelial and vascular smooth muscle cells. There are adrenomedullin receptor and binding sites throughout the body, but they are particularly concentrated in the heart and lungs. MR pro-ADM is the stable inactive prohormone which is enzymatically converted to the biologically active adrenomedullin-amide and mid-regional pro-adrenomedullin (MR-proADM).⁷⁵

Adrenomedullin's roles involve vasodilation and maintenance of endothelial integrity to reduce vascular leakage. Studies demonstrate high levels of circulating levels of adrenomedullin in adult patients with volume overload secondary to sepsis and acute heart failure. There are currently small clinical trials studying the effect of adrenomedullin as a novel therapy in adult congestive heart failure using Adrecizumab a humanised, monoclonal, non-neutralizing antibody against the N-terminus of adrenomedullin.⁵⁴ There is promising evidence that it may improve haemodynamic and hormonal outcomes for adult patients with volume overload.

Table 2. Proposed 99th percentile upper limit cut-off for normal ranges in healthy children for troponin using Abbott and Roche assays

| Assay | Age (years) | Sex | 99th percentile cut off (ng/L) |
|---|-----------------|-----------------|--------------------------------|
| Abbott Tnl | 1–19 years | Male and female | 21 |
| Roche Elecsys Troponin T hs | 0–6 months | Male and female | 87 |
| Roche Elecsys Troponin T Gen 5 STAT assay | 0–6 months | Male and female | 93 |
| Roche Elecsys Troponin T hs | 6 months–1 year | Male and female | 39 |
| Roche Elecsys Troponin T Gen 5 STAT assay | 6 months–1 year | Male and female | 21 |
| Roche Elecsys Troponin T hs | 1–19 years | Male and female | 11 |
| Roche Elecsys Troponin T Gen 5 STAT assay | 1–19 years | Male only | 14 |
| Roche Elecsys Troponin T Gen 5 STAT assay | 1–19 years | Female only | 11 |

There are few paediatric studies which study the role of MR pro-ADM in diagnosis and prognosis of heart failure. It appears to have a limited role, performing less well than NT pro-BNP or MR-proANP in children with heart failure secondary to CHD or cardiomyopathy.²¹ However, one small study of 53 patients found it was significantly raised in children with failing Fontan circulation, correlated to NYHA score, and was more reliable than NT pro-BNP in identifying failing Fontan circulation.⁷⁶ MR pro-ADM may have a role in monitoring heart failure in the Fontan population given venous return relies on peripheral muscle pump function in this cohort.

MR pro-ADM has also been studied in the perioperative period. One small study, focusing primarily on vasoactive inotropic scores following cardiac surgery, found that including postop MR pro-ADM levels did not aid predictive value to their score.⁷² However, other studies concluded that both pre and postoperative MR pro-ADM levels correlated to length of mechanical ventilation and PICU stay.^{77,78} One study of postoperative MR pro-ADM levels suggested a cut-off value of MR pro-ADM of 1.223nmol/L may indicate higher likelihood of mechanical ventilation requirement post operatively.⁷⁹

sST2

Soluble suppression of tumorigenicity-2 is a circulating form of suppression of tumorigenicity-2glycoprotein. ST2L is a receptor for interleukin-33 and the interaction of interleukin-33 and ST2L is cardioprotective by reducing fibrosis and cardiomyocyte hypertrophy in experimental models. When soluble suppression

Table 3. Summary of cardiac biomarkers and their current role in paediatric heart failure assessment

| Biomarker | Role in diagnosis | Role in prognosis | Advantages | Limitations |
|---------------|--|---|--|--|
| BNP/NT-proBNP | Elevated in HF secondary to cardiomyopathy and CHD | Correlates to signs/symptoms Correlates to LVEF May be useful in identification of patients at risk of adverse events | Most evidence available Easy to access assay May indicate early diastolic dysfunction before evident on echo | Elevated in first year of life in healthy children No validated reference values for CHD and CM patients |
| ANP/MR-proANP | Elevated in HF secondary to cardiomyopathy and CHD | Correlates to both signs/symptoms and LVEF | Few | Similar results to BNP/NT-proBNP and less readily available |
| MR-proADM | Limited | May correlate better to HF than NT-proBNP in Fontan cohort | May have therapeutic role as monoclonal antibody | Limited paediatric studies |
| Troponin | Limited | May be useful in postoperative period to indicate risk of adverse events | Easy to access | Limited paediatric studies Elevated in healthy children in first year of life No reference ranges available for CHD/CM |
| sST2 | Limited | Limited | Associated with fibrosis | Limited paediatric studies |
| Galectin-3 | Limited | Correlates to signs/symptoms and LVEF in HF | May reflect improvement from medical management | Limited paediatric studies |
| GDF-15 | Limited | Correlates to signs/symptoms and LVEF in Fontan patients | Can be used in addition to NT-proBNP and troponin to identify those at risk of adverse events | Limited paediatric studies Less useful than NT-proBNP in biventricular physiology |

of tumorigenicity-2 is released in response to cardiomyocyte stretch, it binds with interleukin-33, ST2L is blocked and the interleukin-33/suppression of tumorigenicity-2 system disrupted, resulting in elimination of the cardioprotective effects and associated inflammation. Elevated soluble suppression of tumorigenicity-2 serum levels are associated with increased heart failure and mortality in adult patients with heart disease.^{80–83}

There are a limited number of studies focusing primarily on paediatric heart failure and serum levels of Soluble suppression of tumorigenicity-2 and not all results are consistent.

In a small study comparing biomarker levels in children and adults pre and post ventricular assist device insertion, it was found that Soluble suppression of tumorigenicity-2 levels were significantly higher in children with heart failure than healthy children with no underlying CHD. They also found that soluble suppression of tumorigenicity-2 levels were higher in children compared to adults at all timepoints.⁸⁴ However, a prospective study of participants with heart failure secondary to CHD and cardiomyopathy which compared to healthy controls found that soluble suppression of tumorigenicity-2 was unable to show a significant difference between patients with heart failure and healthy controls.²¹

A longitudinal study of patients with Fontan circulation found that higher baseline soluble suppression of tumorigenicity-2 levels were associated with increased likelihood of adverse events, but no cut-off values were proposed.³⁶ Ghelani et al found suppression of tumorigenicity-2 negatively correlated to ejection fraction in clinically stable Fontan patients, but it was not statistically significant and performed worse than NT-proBNP and troponin.³⁵

Soluble suppression of tumorigenicity-2 may have a role in diagnosis and monitoring of paediatric heart failure, but given the difference in pathophysiology compared to adults, this may be limited and warrants further studies before routine use.

Galectin-3

Galectin-3 is a member of the galectins which are evolutionarily conserved proteins with the ability to bind β -galactosides through characteristic carbohydrate-recognition domains.^{85,86} Galectin-3 is highly expressed in myeloid, epithelial, endothelial cells, and fibroblasts. It can be located both intracellularly in the cytoplasm, nucleus, and membranes and in the extracellular matrix.

Galectin-3 is a multifunctional protein which affects cell growth, differentiation, apoptosis, angiogenesis, inflammation, tumour growth, and fibrogenesis. It is widely distributed in tissues throughout the human body and although its baseline expression levels vary between organs, it is inducible by cardiac injury. Because of its expression in activated macrophages and damaged cardiomyocytes, it induces fibroblast proliferation and collagen deposition which eventually leads to reduced cardiac function.^{87,88}

Studies of children with heart failure suggest that galectin-3 levels are positively correlated to both clinical signs of heart failure and ejection fraction on echocardiogram. One study of children experiencing congestive heart failure secondary to left to right shunt physiology, highlighted that there was positive correlation between Ross score and galectin-3 levels. Galectin-3 showed a better diagnostic value than Ross heart failure classification score in early diagnosis of heart failure in this cohort.⁸⁹ Similarly, in a cross-sectional study of children and adults with heart failure, NYHA score was positively correlated with galectin-3 levels, and galectin-3 was negatively correlated to ejection fraction and positively correlated with NT-proBNP.⁹⁰

However, galectin-3's role in determining long-term prognosis is uncertain as some studies did not find significant correlation between baseline galectin-3 levels and long-term outcomes and mortality.^{36,89,91} Similarly, a longitudinal multicentre study conducted of 133 patients post Fontan found that whilst

NT-proBNP and sT2 correlated with patient outcomes, galectin-3 did not.⁶ This is contraindicated by a study of adult Fontan patients which concluded that galectin-3 is elevated in Fontan patients compared to healthy controls, and that there is an independent association between elevated galectin-3 and adverse outcomes, but they did not directly compare to NT-proBNP levels.⁹²

Galectin-3 may have a role in monitoring response to medical management of heart failure. One study noted that galectin-3 levels for children with heart failure were lower in those treated with spironolactone, presumably because of improved cardiac function. A study of adults and children with heart failure suggested that adults with lower galectin-3 levels treated with statins had a better response to those with higher levels and galectin-3 could be used to better guide medical management in early heart failure.^{90,93}

The current evidence suggests that galectin-3 may have a role in diagnosis and monitoring of heart failure in children and could guide medical management. It may be superior to sT2 despite both being associated with myocardial fibrosis.⁸⁰ However, further large studies which compare galectin-3 levels and NT-proBNP in established paediatric heart failure are needed to consider if it has any role above that established by NT-proBNP.

Growth differentiation factor-15

Growth differentiation factor-15, also known as macrophage inhibitory cytokine, is a member of the growth factor beta cytokine superfamily. In normal physiological state, it is expressed in low amounts in many tissues except for placental and prostate tissue in which it is found in higher concentrations. In heart tissue, it is found to rapidly increase with inflammation and ischaemia. It is also noted to increase with advancing age which is likely due to oxidative stress. High levels of circulating growth differentiation factor-15 have been associated with cardiovascular disease, cancer, renal dysfunction, and diabetes mellitus.⁹⁴ Elevated growth differentiation factor-15 has been associated with children experiencing failure to thrive⁹⁵ and is significantly higher in children with failure to thrive and CHD compared to CHD alone.⁹⁶

In adult heart failure studies, growth differentiation factor-15 levels correlate to NYHA class and can differentiate between clinical heart failure staging. This is regardless of whether ejection fraction is reduced or preserved which may suggest a role above that of NT-proBNP which tends to be lower in patients with preserved EF compared to reduced EF in heart failure.⁹⁷

A study of young adult Fontan patients which assessed growth differentiation factor-15 levels in relation to NYHA score, echo findings and NT-proBNP levels concluded that growth differentiation factor-15 was more useful than NT-proBNP in this cohort at identifying reduced ejection fraction and deteriorating NYHA class. They found that NT-proBNP was only weakly correlated to ejection fraction and that neither NT-proBNP nor growth differentiation factor-15 were significantly related to diastolic dysfunction measures. They have suggested a growth differentiation factor-15 level of 613 pg/ml to predict EF < 50% with a sensitivity of 90% and specificity of 85.7%.⁹⁸ This was supported by a similar study focusing on growth differentiation factor-15 levels in adult CHD patients with evidence of heart failure. They found growth differentiation factor-15 levels correlated to NT-proBNP levels, lower exercise tolerance and increasing NYHA class. They commented that participants with single ventricle physiology had higher growth differentiation factor-15 levels than those with biventricular physiology.⁹⁹

In children with heart failure secondary to biventricular CHD physiology, growth differentiation factor-15 levels were increased with increasing Ross classification and severity of heart failure. Elevated growth differentiation factor-15 levels can be used to accurately identify participants at highest risk of adverse cardiac events or death.^{36,100,101} Growth differentiation factor-15 levels correlated positively with NT-proBNP levels, and one study highlighted that when used in combination with NT-proBNP and hsTnT it could be used to identify those participants at highest risk of adverse events compared to using NT-proBNP alone.¹⁰²

However, as only some of the studies directly compared diagnostic accuracy of NT-proBNP and growth differentiation factor-15 in paediatric heart failure, it would appear that NT-proBNP remains more sensitive and specific for those with heart failure and biventricular physiology.²¹

Conclusion

Paediatric heart failure is a complex physiological state which is influenced by underlying cardiac condition, age of patient, and surgical and/or medical management. The current literature has not identified one sole biomarker which is useful in diagnosing and monitoring heart failure in all affected children (see Table 3). There is evidence that NT-proBNP correlates closely to echocardiogram findings and functional status for children with biventricular physiology. Yet, the literature has described a range of diagnostic NT-proBNP cut-off values in this group, so it would require caution for use as a screening tool. It appears to be less reliable in cardiomyopathy and single ventricle physiology and therefore larger longitudinal paediatric studies are required to incorporate these patient groups and determine if biomarkers which reflect changes in systolic function and pressure overload are more suitable than NT-proBNP.

Acknowledgements. None.

Financial support. Dr Claire McGinn is funded in her current PhD fellowship through the Royal Belfast Hospital for Sick Children (RBHSC) charitable funds.

Conflicts of interest. None.

References

- Kirk R, Dipchand AI, Rosenthal DN, et al. The International Society for Heart and Lung Transplantation Guidelines for the management of pediatric heart failure: executive summary. *J Heart Lung Transplant* 2014; 33: 888–909. DOI [10.1016/j.healun.2014.06.002](https://doi.org/10.1016/j.healun.2014.06.002).
- Kantor PF, Loughheed J, Dancea A, et al. Presentation, diagnosis, and medical management of heart failure in children: Canadian Cardiovascular Society Guidelines 2013. *Can J Cardiol* 2013; 9: 1535–1552. DOI [10.1016/j.cjca.2013.08.008](https://doi.org/10.1016/j.cjca.2013.08.008).
- Spaziani G, Bennati E, Marrone C, et al. Pathophysiology and clinical presentation of paediatric heart failure related to congenital heart disease. *Acta Paediatr* 2021; 110: 2336–2343. DOI [10.1111/apa.15904](https://doi.org/10.1111/apa.15904).
- Law MA, Tivakaran VS. Coarctation of the Aorta, 2021. <https://www.ncbi.nlm.nih.gov/books/NBK430913/>
- Yuan S-M. Cardiomyopathy in the pediatric patients. *Pediatr Neonatol* 2018; 59: 120–128. DOI [10.1016/j.pedneo.2017.05.003](https://doi.org/10.1016/j.pedneo.2017.05.003).
- Lipshultz SE, Law YM, Asante-Korang A, et al. Cardiomyopathy in children: classification and diagnosis: a scientific statement from the American Heart Association. *Circulation* 2019; 140: e9–e68. DOI [10.1161/CIR.0000000000000682](https://doi.org/10.1161/CIR.0000000000000682).
- Molina KM, Shrader P, Colan SD, et al. Predictors of disease progression in pediatric dilated cardiomyopathy. *Circ Heart Fail* 2013; 6: 1214–1222. DOI [10.1161/CIRCHEARTFAILURE.113.000125](https://doi.org/10.1161/CIRCHEARTFAILURE.113.000125).

8. Mahmaljy H, et al. Dilated Cardiomyopathy. StatPearls, Treasure Island, FL, 2021.
9. Bakker MK, Bergman JEH, Krikov S, et al. Prenatal diagnosis and prevalence of critical congenital heart defects: an international retrospective cohort study. *BMJ Open* 2019; 9: e028139. DOI [10.1136/bmjopen-2018-028139](https://doi.org/10.1136/bmjopen-2018-028139).
10. Clerico A, Giannoni A, Vittorini S, Passino C. Thirty years of the heart as an endocrine organ: physiological role and clinical utility of cardiac natriuretic hormones. *Am J Physiol Heart Circ Physiol* 2011; 301: H12–H20. DOI [10.1152/ajpheart.00226.2011](https://doi.org/10.1152/ajpheart.00226.2011).
11. Fu S, Ping P, Wang F, Luo L. Synthesis, secretion, function, metabolism and application of natriuretic peptides in heart failure. *J Biol Eng* 2018; 12: 2.
12. Nakagawa Y, Nishikimi T, Kuwahara K. Atrial and brain natriuretic peptides: hormones secreted from the heart. *Peptides* 2019; 111: 18–25. DOI [10.1016/j.peptides.2018.05.012](https://doi.org/10.1016/j.peptides.2018.05.012).
13. Şahin M, Portakal O, Karagöz T, et al. Diagnostic performance of BNP and NT-ProBNP measurements in children with heart failure based on congenital heart defects and cardiomyopathies. *Clin Biochem* 2010; 43: 1278–1281. DOI [10.1016/j.clinbiochem.2010.08.002](https://doi.org/10.1016/j.clinbiochem.2010.08.002).
14. Lam E, Higgins V, Zhang L, et al. Normative values of high-sensitivity cardiac troponin T and N-terminal pro-B-type natriuretic peptide in children and adolescents: a study from the CALIPER cohort. *J Appl Lab Med* 2021; 6: 344–353. DOI [10.1093/jalm/jfaa090](https://doi.org/10.1093/jalm/jfaa090).
15. Kiess A, Green J, Willenberg A, et al. Age-dependent reference values for hs-troponin T and NT-proBNP and determining factors in a cohort of healthy children (The LIFE Child Study). *Pediatr Cardiol* 2022; 43: 1071–1083. DOI [10.1007/s00246-022-02827-x](https://doi.org/10.1007/s00246-022-02827-x).
16. Albers S, Mir TS, Haddad M, Lær S. N-Terminal pro-brain natriuretic peptide: normal ranges in the pediatric population including method comparison and interlaboratory variability. *Clinical Chemistry and Laboratory Medicine (CCLM)* 2006; 44: 80–85. DOI [10.1515/CCLM.2006.016](https://doi.org/10.1515/CCLM.2006.016).
17. Sezgin Evim M, Ucar B, Kilic Z, Colak O. The value of serum N-terminal pro-brain natriuretic peptide levels in the differential diagnosis and follow-up of congestive cardiac failure and respiratory distress due to pulmonary aetiologies in infants and children. *Cardiol Young* 2010; 20: 495–504. DOI [10.1017/S1047951110000533](https://doi.org/10.1017/S1047951110000533).
18. Law YM, Hoyer AW, Reller MD, Silberbach M. Accuracy of plasma B-type natriuretic peptide to diagnose significant cardiovascular disease in children. *J Am Coll Cardiol* 2009; 54: 1467–1475. DOI [10.1016/j.jacc.2009.06.020](https://doi.org/10.1016/j.jacc.2009.06.020).
19. Koulouri S, Acherman RJ, Wong PC, Chan LS, Lewis AB. Utility of B-type natriuretic peptide in differentiating congestive heart failure from lung disease in pediatric patients with respiratory distress. *Pediatr Cardiol* 2004; 25: 341–346. DOI [10.1007/s00246-003-0578-0](https://doi.org/10.1007/s00246-003-0578-0).
20. Sugimoto M, Manabe H, Nakau K, et al. The role of N-terminal pro-B-type natriuretic peptide in the diagnosis of congestive heart failure in children - correlation with the heart failure score and comparison with B-type natriuretic peptide. *Circ J* 2010; 74: 998–1005. DOI [10.1253/circj.CJ-09-0535](https://doi.org/10.1253/circj.CJ-09-0535).
21. Hauser JA, Demyanets S, Rusai K, et al. Diagnostic performance and reference values of novel biomarkers of paediatric heart failure. *Heart* 2016; 102: 1633–1639.
22. Lin C-W, Zeng X-L, Zhang J-F, Meng X-H. Determining the optimal cut-off values of plasma N-terminal pro-B-type natriuretic peptide levels for the diagnosis of heart failure in children of age up to 14 years. *J Card Fail* 2014; 20: 168–173. DOI [10.1016/j.cardfail.2013.12.013](https://doi.org/10.1016/j.cardfail.2013.12.013).
23. Ohuchi H, Takasugi H, Ohashi H, et al. Stratification of pediatric heart failure on the basis of neurohormonal and cardiac autonomic nervous activities in patients with congenital heart disease. *Circulation* 2003; 108: 2368–2376. DOI [10.1161/01.CIR.0000101681.27911.FA](https://doi.org/10.1161/01.CIR.0000101681.27911.FA).
24. Maher KO, Reed H, Cuadrado A, et al. B-type natriuretic peptide in the emergency diagnosis of critical heart disease in children. *Pediatrics* 2008; 121: e1484–e1488. DOI [10.1542/peds.2007-1856](https://doi.org/10.1542/peds.2007-1856).
25. Salem SS, Saleh NY, Soliman SE, Abo-Haded HM. On-admission plasma levels of BNP, MR-proADM, and cTnI in pediatric heart failure: contributions to diagnosis, prognosis, and outcome. *Irish J Med Sci* 2022; 191: 263–270. DOI [10.1007/s11845-021-02533-2](https://doi.org/10.1007/s11845-021-02533-2).
26. Mori Y, Nakashima Y, Kaneko S, Inoue N, Murakami T. Risk factors for cardiac adverse events in infants and children with complex heart disease scheduled for bi-ventricular repair: prognostic value of pre-operative B-type natriuretic peptide and high-sensitivity troponin T. *Pediatr Cardiol* 2020; 41: 1756–1765. DOI [10.1007/s00246-020-02437-5](https://doi.org/10.1007/s00246-020-02437-5).
27. Mir TS, Haun C, Lilje C, Lær S, Weil J. Utility of N-terminal brain natriuretic peptide plasma concentrations in comparison to lactate and troponin in children with congenital heart disease following open-heart surgery. *Pediatr Cardiol* 2006; 27: 209–216. DOI [10.1007/s00246-005-1152-8](https://doi.org/10.1007/s00246-005-1152-8).
28. Cantinotti M. B-type cardiac natriuretic peptides in the neonatal and pediatric intensive care units. *J Pediatr Intensive Care* 2016; 05: 189–197. DOI [10.1055/s-0036-1583543](https://doi.org/10.1055/s-0036-1583543).
29. Butnariu A, Iancu M, Samaşca G, Chira M, Lupan I. Changes in NT-proBNP in young children with congenital heart malformations. *Lab Med* 2014; 45: 43–47. DOI [10.1309/LMAO4UY90YJQWKKP](https://doi.org/10.1309/LMAO4UY90YJQWKKP).
30. Lowenthal A, Camacho BV, Lowenthal S, et al. Usefulness of B-type natriuretic peptide and N-terminal pro-B-type natriuretic peptide as biomarkers for heart failure in young children with single ventricle congenital heart disease. *Am J Cardiol* 2012; 109: 866–872. DOI [10.1016/j.amjcard.2011.10.049](https://doi.org/10.1016/j.amjcard.2011.10.049).
31. Shah A, Feraco AM, Harmon C, Tacy T, Fineman JR, Bernstein HS. Usefulness of various plasma biomarkers for diagnosis of heart failure in children with single ventricle physiology. *Am J Cardiol* 2009; 104: 1280–1284. DOI [10.1016/j.amjcard.2009.06.046](https://doi.org/10.1016/j.amjcard.2009.06.046).
32. Law YM, Ettetdgui J, Beerman L, Maisel A, Tofovic S. Comparison of plasma B-type natriuretic peptide levels in single ventricle patients with systemic ventricle heart failure versus isolated cavopulmonary failure. *Am J Cardiol* 2006; 98: 520–524. DOI [10.1016/j.amjcard.2006.02.058](https://doi.org/10.1016/j.amjcard.2006.02.058).
33. Knirsch W, Häusermann E, Fasnacht M, Hersberger M, Gessler P, Bauersfeld U. Plasma B-type natriuretic peptide levels in children with heart disease. *Acta Paediatr* 2011; 100: 1213–1216. DOI [10.1111/j.1651-2227.2011.02258.x](https://doi.org/10.1111/j.1651-2227.2011.02258.x).
34. Lechner E, Gitter R, Mair R, et al. Aminoterminal brain natriuretic peptide levels in children and adolescents after Fontan operation correlate with congestive heart failure. *Pediatr Cardiol* 2008; 29: 901–905. DOI [10.1007/s00246-008-9225-0](https://doi.org/10.1007/s00246-008-9225-0).
35. Ghelani SJ, Opatowsky AR, Harrild DM, et al. Characterization of circulating and urinary biomarkers in the Fontan circulation and their correlation with cardiac imaging. *Am J Cardiol* 2022; 162: 177–183. DOI [10.1016/j.amjcard.2021.08.063](https://doi.org/10.1016/j.amjcard.2021.08.063).
36. van den Bosch E, Bossers SSM, Kamphuis VP, et al. Associations between blood biomarkers, cardiac function, and adverse outcome in a young Fontan cohort. *J Am Heart Assoc* 2021; 10: e015022. DOI [10.1161/JAHA.119.015022](https://doi.org/10.1161/JAHA.119.015022).
37. Meulen M, Boer S, Marchie Sarvaas GJ, et al. Predicting outcome in children with dilated cardiomyopathy: the use of repeated measurements of risk factors for outcome. *ESC Heart Fail* 2021; 8: 1472–1481. DOI [10.1002/ehf2.13233](https://doi.org/10.1002/ehf2.13233).
38. Westerlind A, Wählander H, Lindstedt G, Lundberg P-A, Holmgren D. Clinical signs of heart failure are associated with increased levels of natriuretic peptide types B and A in children with congenital heart defects or cardiomyopathy. *Acta Paediatr* 2004; 93: 340–345. DOI [10.1080/08035250410022756](https://doi.org/10.1080/08035250410022756).
39. Schoen SP, Zimmermann T, Kittner T, et al. NT-proBNP correlates with right heart haemodynamic parameters and volumes in patients with atrial septal defects. *Eur J Heart Fail* 2007; 9: 6–7. DOI [10.1016/j.ejheart.2007.01.014](https://doi.org/10.1016/j.ejheart.2007.01.014).
40. Ozhan H, Albayrak S, Uzun H, Ordu S, Kaya A, Yazıcı M. Correlation of plasma B-type natriuretic peptide with shunt severity in patients with atrial or ventricular septal defect. *Pediatr Cardiol* 2007; 28: 272–275. DOI [10.1007/s00246-006-0014-3](https://doi.org/10.1007/s00246-006-0014-3).
41. Jamei Khosroshahi A, Molaei A, Samadi M, Eskandartash E. The correlation between serum level of brain natriuretic peptide and amount of left

- to right shunt. *J Cardiovasc Thorac Res* 2019; 11: 68–71. DOI [10.15171/jcvtr.2019.11](https://doi.org/10.15171/jcvtr.2019.11).
42. Paul MA, Backer CL, Binns HJ, et al. B-type natriuretic peptide and heart failure in patients with ventricular septal defect: a pilot study. *Pediatr Cardiol* 2009; 30: 1094–1097. DOI [10.1007/s00246-009-9503-5](https://doi.org/10.1007/s00246-009-9503-5).
 43. Kavga M, Varlamis G, Giannopoulos A, et al. Correlation of plasma B-type natriuretic peptide with shunt volume in children with congenital heart disease involving left-to-right shunt. *Hellenic J Cardiol* 2013; 54: 192–198.
 44. Cura C, Argun M, Koçer D. Aldosterone, Galectin-3, and NTproBNP levels and their values as biomarkers in infants with ventricular septal defect. *Turk Kardiyol Dern Ars* 2022; 50: 131–136. DOI [10.5543/tkda.2022.71734](https://doi.org/10.5543/tkda.2022.71734).
 45. Paneitz DC, Zhou A, Yanek L, et al. Growth differentiation factor 15: a novel growth biomarker for children with congenital heart disease. *World J Pediatr Congenit Heart Surg* 2022; 13: 745–751. DOI [10.1177/21501351221118080](https://doi.org/10.1177/21501351221118080).
 46. Narin N, Hekimoglu B, Baykan A, et al. The role of N-terminal proBNP in the clinic scoring of heart failure due to dilated cardiomyopathy in children. *Clin Lab* 2014; 60: 563–570. DOI [10.7754/Clin.Lab.2013.130145](https://doi.org/10.7754/Clin.Lab.2013.130145).
 47. Ge H-Y, Li X-M, Tang X-J, Zhang Y, Liu H-J, Li Y-H. Optimal noninvasive assessment of initial left ventricular dysfunction in children with ectopic atrial tachycardia. *Eur J Paediatr* 2015; 174: 1015–1022. DOI [10.1007/s00431-015-2500-1](https://doi.org/10.1007/s00431-015-2500-1).
 48. Yeh J-L, Hsu J-H, Dai Z-K, Liou S-F, Chen I-J, Wu J-R. Increased circulating big endothelin-1, endothelin-1 and atrial natriuretic peptide in infants and children with heart failure secondary to congenital heart disease. *Int J Cardiol* 2005; 104: 15–20. DOI [10.1016/j.ijcard.2004.09.010](https://doi.org/10.1016/j.ijcard.2004.09.010).
 49. Bobillo-Perez S, Girona-Alarcon M, Corniero P, et al. Pro-atrial natriuretic peptide and pro-adrenomedullin before cardiac surgery in children. Can we predict the future? *PLOS ONE* 2020; 15: e0236377. DOI [10.1371/journal.pone.0236377](https://doi.org/10.1371/journal.pone.0236377).
 50. Kotby AA, Taman KH, Sedky HTA, Habeeb NMM, El-Hadidi ES, Youssef HS. Atrial natriuretic peptide as a marker of heart failure in children with left ventricular volume overload. *J Paediatr Child Health* 2013; 49: 43–47. DOI [10.1111/jpc.12012](https://doi.org/10.1111/jpc.12012).
 51. Kader R. Plasma levels of adrenomedullin and atrial natriuretic peptide in patients with congestive heart failure of various etiologies. *Ital J Biochem* 2007; 57: 18–27.
 52. Suda K, Matsumura M, Matsumoto M. Clinical implication of plasma natriuretic peptides in children with ventricular septal defect. *Pediatr Int* 2003; 45: 249–254. DOI [10.1046/j.1442-200X.2003.01716.x](https://doi.org/10.1046/j.1442-200X.2003.01716.x).
 53. Eerola A, Poutanen T, Savukoski T, et al. Cardiac troponin I, cardiac troponin-specific autoantibodies and natriuretic peptides in children with hypoplastic left heart syndrome. *Interact Cardiovasc Thorac Surg* 2014; 18: 80–85.
 54. Holmgren D, Westerlind A, Lundberg P-A, Wahlander H. Increased plasma levels of natriuretic peptide type B and A in children with congenital heart defects with left compared with right ventricular volume overload or pressure overload. *Clin Physiol Funct Imaging* 2005; 25: 263–269. DOI [10.1111/j.1475-097X.2005.00622.x](https://doi.org/10.1111/j.1475-097X.2005.00622.x).
 55. Hammarsten O, Mair J, Möckel M, Lindahl B, Jaffe AS. Possible mechanisms behind cardiac troponin elevations. *Biomarkers* 2018; 23: 725–734. DOI [10.1080/1354750X.2018.1490969](https://doi.org/10.1080/1354750X.2018.1490969).
 56. Torre M, Jarolim P. Cardiac troponin assays in the management of heart failure. *Clin Chim Acta* 2015; 441: 92–98. DOI [10.1016/j.cca.2014.12.027](https://doi.org/10.1016/j.cca.2014.12.027).
 57. Chesnaye NC, Szummer K, Bárány P, et al. Association between renal function and troponin T over time in stable chronic kidney disease patients. *J Am Heart Assoc* 2019; 8: e013091. DOI [10.1161/JAHA.119.013091](https://doi.org/10.1161/JAHA.119.013091).
 58. Kontos MC, Turlington JS. High-sensitivity troponins in cardiovascular disease. *Curr Cardiol Rep* 2020; 22: 30. DOI [10.1007/s11886-020-01279-0](https://doi.org/10.1007/s11886-020-01279-0).
 59. Welsh P, et al. Utility of High-Sensitivity Troponin T and I: Are They the Same? American College of Paediatrics, Gainesville, FL, 2019.
 60. Bohn MK, Higgins V, Kavsak P, Hoffman B, Adeli K. High-sensitivity generation 5 cardiac troponin T sex- and age-specific 99th percentiles in the CALIPER cohort of healthy children and adolescents. *Clin Chem* 2019; 65: 589–591. DOI [10.1373/clinchem.2018.299156](https://doi.org/10.1373/clinchem.2018.299156).
 61. Uner A, Doğan M, Ay M, Acar Ç. The evaluation of serum N-terminal prohormone brain-type natriuretic peptide, troponin-I, and high-sensitivity C-reactive protein levels in children with congenital heart disease. *Hum Exp Toxicol* 2014; 33: 1158–1166. DOI [10.1177/0960327113514097](https://doi.org/10.1177/0960327113514097).
 62. Zhou F, Zhou C-Y, Tian Y-J, et al. Diagnostic value of analysis of H-FABP, NT-proBNP, and cTnI in heart function in children with congenital heart disease and pneumonia. *Eur Rev Med Pharmacol Sci* 2014; 18: 1513–1516.
 63. Sugimoto M, Ota K, Kajihama A, Nakau K, Manabe H, Kajino H. Volume overload and pressure overload due to left-to-right shunt-induced myocardial injury. Evaluation using a highly sensitive cardiac Troponin-I assay in children with congenital heart disease. *Circ J* 2011; 75: 2213–2219.
 64. Kotby AA, Abd Al Aziz MM, Husseiny AH, Al-Fahham MM. Detection of early myocardial injury in children with ventricular septal defect using cardiac troponin I and two-dimensional speckle tracking echocardiography. *Pediatr Cardiol* 2020; 41: 1548–1558. DOI [10.1007/s00246-020-02410-2](https://doi.org/10.1007/s00246-020-02410-2).
 65. Eerola A, Jokinen EO, Savukoski TI, Pettersson KSI, Poutanen T, Pihkala JI. Cardiac troponin I in congenital heart defects with pressure or volume overload. *Scand Cardiovasc J* 2013; 47: 154–159. DOI [10.3109/14017431.2012.751506](https://doi.org/10.3109/14017431.2012.751506).
 66. Immer FF, Stocker F, Seiler AM, et al. Troponin-I for prediction of early postoperative course after pediatric cardiac surgery. *J Am Coll Cardiol* 1999; 33: 1719–1723. DOI [10.1016/S0735-1097\(99\)00061-3](https://doi.org/10.1016/S0735-1097(99)00061-3).
 67. Nagy ZL, Collins M, Sharpe T, et al. Effect of two different bypass techniques on the serum troponin-T levels in newborns and children. *Circulation* 2003; 108: 577–582. DOI [10.1161/01.CIR.0000081779.88132.74](https://doi.org/10.1161/01.CIR.0000081779.88132.74).
 68. Lipshultz SE, Rifai N, Sallan SE, et al. Predictive value of cardiac troponin T in pediatric patients at risk for myocardial injury. *Circulation* 1997; 96: 2641–2648. DOI [10.1161/01.CIR.96.8.2641](https://doi.org/10.1161/01.CIR.96.8.2641).
 69. Mildh LH, Pettilä V, Sairanen HI, Rautiainen PH. Cardiac troponin T levels for risk stratification in pediatric open heart surgery. *Ann Thorac Surg* 2006; 82: 1643–1648. DOI [10.1016/j.athoracsur.2006.05.014](https://doi.org/10.1016/j.athoracsur.2006.05.014).
 70. Froese NR, Sett SS, Mock T, Krahn GE. Does troponin-I measurement predict low cardiac output syndrome following cardiac surgery in children? *Crit Care Resusc* 2009; 11: 116–121.
 71. Hammer S, Loeff M, Reichenspurner H, et al. Effect of cardiopulmonary bypass on myocardial function, damage and inflammation after cardiac surgery in newborns and children. *Thorac Cardiovasc Surg* 2001; 49: 349–354. DOI [10.1055/s-2001-19011](https://doi.org/10.1055/s-2001-19011).
 72. Pérez-Navero JL, Merino-Cejas C, Ibarra de la Rosa I, et al. Evaluation of the vasoactive-inotropic score, mid-regional pro-adrenomedullin and cardiac troponin I as predictors of low cardiac output syndrome in children after congenital heart disease surgery. *Med Intensiva* 2019; 43: 329–336. DOI [10.1016/j.medin.2018.04.005](https://doi.org/10.1016/j.medin.2018.04.005).
 73. Momeni M, Poncelet A, Rubay J, et al. Does postoperative cardiac troponin-I have any prognostic value in predicting midterm mortality after congenital cardiac surgery? *J Cardiothorac Vasc Anesth* 2017; 31: 122–127. DOI [10.1053/j.jvca.2016.02.018](https://doi.org/10.1053/j.jvca.2016.02.018).
 74. Bottio T, Vida V, Padalino M, Gerosa G, Stellin G. Early and long-term prognostic value of Troponin-I after cardiac surgery in newborns and children. *Eur J Cardiothorac Surg* 2006; 30: 250–255. DOI [10.1016/j.ejcts.2006.05.001](https://doi.org/10.1016/j.ejcts.2006.05.001).
 75. Nishikimi T, Nakagawa Y. Adrenomedullin as a biomarker of heart failure. *Heart Fail Clin* 2018; 14: 49–55. DOI [10.1016/j.hfc.2017.08.006](https://doi.org/10.1016/j.hfc.2017.08.006).
 76. Kaiser R, Abdul-Khaliq H, Wilkens H, Herrmann E, Raedle-Hurst TM. Mid-regional pro-adrenomedullin: an indicator of the failing Fontan circuit in patients with univentricular hearts? *Eur J Heart Fail* 2014; 16: 1082–1088. DOI [10.1002/ehf.158](https://doi.org/10.1002/ehf.158).
 77. Pérez-Navero JL, de la Torre-Aguilar MJ, Ibarra de la Rosa I, et al. Cardiac biomarkers of low cardiac output syndrome in the postoperative period after congenital heart disease surgery in children. *Revista Española de Cardiología (English Edition)* 2017; 70: 267–274. DOI [10.1016/j.rec.2016.09.011](https://doi.org/10.1016/j.rec.2016.09.011).

78. Szekely L, Vijay P, Sharp TG, Bando K, Brown JW. Correlation of plasma adrenomedullin to myocardial preservation during open-heart surgery. *Pediatr Cardiol* 2000; 21: 228–233. DOI [10.1007/s002460010046](https://doi.org/10.1007/s002460010046).
79. Bobillo-Perez S, Jordan I, Corniero P, Balaguer M, Sole-Ribalta A, Esteban ME, Esteban E, Cambra FJ, Passino C. Prognostic value of biomarkers after cardiopulmonary bypass in pediatrics: the prospective PANCAP study. *PLOS ONE* 2019; 14: e0215690. DOI [10.1371/journal.pone.0215690](https://doi.org/10.1371/journal.pone.0215690).
80. Bi J, Garg V, Yates AR. Galectin-3 and sST2 as prognosticators for heart failure requiring extracorporeal life support: Jack n' Jill. *Biomolecules* 2021; 11: 166. DOI [10.3390/biom11020166](https://doi.org/10.3390/biom11020166).
81. Tutarel O. sST2: a new kid on the block for patients with ACHD. *Heart* 2019; 105: 972. DOI [10.1136/heartjnl-2019-314699](https://doi.org/10.1136/heartjnl-2019-314699).
82. Zhang T, Xu C, Zhao R, Cao Z. Diagnostic value of sST2 in cardiovascular diseases: a systematic review and meta-analysis. *Front Cardiovasc Med* 2021; 8: 697837. DOI [10.3389/fcvm.2021.697837](https://doi.org/10.3389/fcvm.2021.697837).
83. Weinberg EO, Shimpo M, Hurwitz S, Tominaga S-I, Rouleau J-L, Lee RT. Identification of serum soluble ST2 receptor as a novel heart failure biomarker. *Circulation* 2003; 107: 721–726. DOI [10.1161/01.CIR.0000047274.66749.FE](https://doi.org/10.1161/01.CIR.0000047274.66749.FE).
84. Ragusa R, Prontera C, Di Molletta A, et al. Time-course of circulating cardiac and inflammatory biomarkers after Ventricular Assist Device implantation: comparison between paediatric and adult patients. *Clin Chim Acta* 2018; 486: 88–93. DOI [10.1016/j.cca.2018.07.036](https://doi.org/10.1016/j.cca.2018.07.036).
85. Amin HZ, Amin LZ, Wijaya IP. Galectin-3: a novel biomarker for the prognosis of heart failure. *Med Pharm Rep* 2017; 90: 129–132. DOI [10.15386/cjmed-751](https://doi.org/10.15386/cjmed-751).
86. Díaz-Alvarez L, Ortega E. The many roles of galectin-3, a multifaceted molecule, in innate immune responses against pathogens. *Mediat Inflamm* 2017; 2017: 1–10. DOI [10.1155/2017/9247574](https://doi.org/10.1155/2017/9247574).
87. Suthahar N, Meijers WC, Silljé HHW, Ho JE, Liu F-T, de Boer RA. Galectin-3 activation and inhibition in heart failure and cardiovascular disease: an update. *Theranostics* 2018; 8: 593–609. DOI [10.7150/thno.22196](https://doi.org/10.7150/thno.22196).
88. Zhong X, Qian X, Chen G, Song X. The role of galectin-3 in heart failure and cardiovascular disease. *Clin Exp Pharmacol Physiol* 2019; 46: 197–203. DOI [10.1111/1440-1681.13048](https://doi.org/10.1111/1440-1681.13048).
89. Saleh N, Khatib A, Rizk M, Salem S, Abo-Haded H. Value of Galectin-3 assay in children with heart failure secondary to congenital heart diseases: a prospective study. *BMC Paediatr* 2020; 20: 537. DOI [10.1186/s12887-020-02427-9](https://doi.org/10.1186/s12887-020-02427-9).
90. Gocer H, Günday M, Ünal M. Plasma galectin-3 as a biomarker for clinical staging of heart failure: a cross-sectional evaluation of 100 cases. *La Clinica Terapeutica* 2019; 170: 267–271.
91. Frogoudaki AA, Pantelakis I, Bistola V, et al. Global longitudinal strain of the systemic ventricle is correlated with plasma galectin-3 and predicts major cardiovascular events in adult patients with congenital heart disease. *Medicina* 2020; 56: 305. DOI [10.3390/medicina56060305](https://doi.org/10.3390/medicina56060305).
92. Opotowsky AR, Baraona F, Owumi J, et al. Galectin-3 is elevated and associated with adverse outcomes in patients with single-ventricle Fontan circulation. *J Am Heart Assoc* 2016; 5: e002706. DOI [10.1161/JAHA.115.002706](https://doi.org/10.1161/JAHA.115.002706).
93. Kotby AA, Youssef OI, Elmaraghy MO, El Sharkawy OS. Galectin-3 in children with chronic heart failure with normal and reduced ejection fraction: relationship to disease severity. *Pediatr Cardiol* 2017; 38: 95–102. DOI [10.1007/s00246-016-1488-2](https://doi.org/10.1007/s00246-016-1488-2).
94. Arkoumani M, Papadopoulou-Marketou N, Nicolaidis NC, Kanaka-Gantenbein C, Tentolouris N, Papassotiriou I. The clinical impact of growth differentiation factor-15 in heart disease: a 2019 update. *Crit Rev Clin Lab Sci* 2020; 57: 114–125. DOI [10.1080/10408363.2019.1678565](https://doi.org/10.1080/10408363.2019.1678565).
95. Wang T, Liu J, McDonald C, Lupino K, et al. GDF15 is a heart-derived hormone that regulates body growth. *EMBO Mol Med* 2017; 9: 1150–1164. DOI [10.15252/emmm.201707604](https://doi.org/10.15252/emmm.201707604).
96. Paneitz DC, Zhou A, Yanek L, et al. Growth differentiation factor 15: a novel growth biomarker for children with congenital heart disease. *World J Pediatr Congenit Heart Surg* 2022; 13: 745–751. DOI [10.1177/21501351221118080](https://doi.org/10.1177/21501351221118080).
97. Wollert KC, Kempf T, Wallentin L. Growth differentiation factor 15 as a biomarker in cardiovascular disease. *Clin Chem* 2017; 63: 140–151. DOI [10.1373/clinchem.2016.255174](https://doi.org/10.1373/clinchem.2016.255174).
98. Raedle-Hurst TM, Koenigstein K, Gruenhage F, Raedle J, Herrmann E, Abdul-Khaliq H. Growth differentiation factor 15—an early marker of abnormal function of the Fontan circuit in patients with univentricular hearts. *Am Heart J* 2010; 160: 1105–1112. DOI [10.1016/j.ahj.2010.08.033](https://doi.org/10.1016/j.ahj.2010.08.033).
99. Norozi K, Buchhorn R, Yasin A, et al. Growth differentiation factor 15: an additional diagnostic tool for the risk stratification of developing heart failure in patients with operated congenital heart defects? *Am Heart J* 2011; 162: 131–135. DOI [10.1016/j.ahj.2011.03.036](https://doi.org/10.1016/j.ahj.2011.03.036).
100. Zhou X-J, Zhang X, Zhang J, Zhou L, Zhou T-T, Zhang J-W. Diagnostic value of growth differentiation factor-15 and beta2-microglobulin in children with congenital heart disease combined with chronic heart failure and its relationship with cardiac function. *Eur Rev Med Pharmacol Sci* 2020; 24: 8096–8103.
101. Khayal AM, Nemr SBE, Serogy HAE, Zoair AM. Plasma growth differentiation factor-15 as a prognostic biomarker in children with congestive heart failure. *J Adv Med Med Res* 2020; 32: 34–42. DOI [10.9734/jammr/2020/v32i2230703](https://doi.org/10.9734/jammr/2020/v32i2230703).
102. Baggen VJM, van den Bosch AE, Eindhoven JA, et al. Prognostic value of N-terminal pro-B-type natriuretic peptide, troponin-T, and growth-differentiation factor 15 in adult congenital heart disease. *Circulation* 2017; 135: 264–279. DOI [10.1161/CIRCULATIONAHA.116.023255](https://doi.org/10.1161/CIRCULATIONAHA.116.023255).