



LJMU Research Online

Irodotou, D, Fragkoudi, F, Pakmor, R, Grand, RJJ, Gadotti, DA, Costa, T, Springel, V, Gómez, FA and Marinacci, F

The effects of AGN feedback on the structural and dynamical properties of Milky Way-mass galaxies in cosmological simulations

<http://researchonline.ljmu.ac.uk/id/eprint/19153/>

Article

Citation (please note it is advisable to refer to the publisher's version if you intend to cite from this work)

Irodotou, D, Fragkoudi, F, Pakmor, R, Grand, RJJ, Gadotti, DA, Costa, T, Springel, V, Gómez, FA and Marinacci, F (2022) The effects of AGN feedback on the structural and dynamical properties of Milky Way-mass galaxies in cosmological simulations. Monthly Notices of the Royal Astronomical








LJMU has developed [LJMU Research Online](#) for users to access the research output of the University more effectively. Copyright © and Moral Rights for the papers on this site are retained by the individual authors and/or other copyright owners. Users may download and/or print one copy of any article(s) in LJMU Research Online to facilitate their private study or for non-commercial research. You may not engage in further distribution of the material or use it for any profit-making activities or any commercial gain.

The version presented here may differ from the published version or from the version of the record. Please see the repository URL above for details on accessing the published version and note that access may require a subscription.

For more information please contact researchonline@ljmu.ac.uk

<http://researchonline.ljmu.ac.uk/>

The effects of AGN feedback on the structural and dynamical properties of Milky Way-mass galaxies in cosmological simulations

Dimitrios Irodotou ^{1,2}★ Francesca Fragkoudi,^{3,4,5} Ruediger Pakmor ⁵, Robert J. J. Grand,^{5,6,7} Dimitri A. Gadotti ⁴, Tiago Costa ⁵, Volker Springel ⁵, Facundo A. Gómez ^{8,9} and Federico Marinacci ¹⁰

¹Department of Physics, University of Helsinki, Gustaf Hällströmin katu 2, FI-00014 Helsinki, Finland

²Astronomy Centre, University of Sussex, Falmer, Brighton BN1 9QH, UK

³Institute for Computational Cosmology, Department of Physics, Durham University, Durham DH1 3LE, UK

⁴European Southern Observatory, Karl-Schwarzschild-Str. 2, D-85748 Garching, Germany

⁵Max-Planck-Institut für Astrophysik, Karl-Schwarzschild-Str. 1, D-85748 Garching, Germany

⁶Instituto de Astrofísica de Canarias, Calle Vía Láctea s/n, E-38205 La Laguna, Tenerife, Spain

⁷Departamento de Astrofísica, Universidad de La Laguna, Av. del Astrofísico Francisco Sánchez s/n, E-38206 La Laguna, Tenerife, Spain

⁸Instituto de Investigación Multidisciplinar en Ciencia y Tecnología, Universidad de La Serena, Raúl Bitrán 1305, La Serena, Chile

⁹Departamento de Astronomía, Universidad de La Serena, Av. Juan Cisternas 1200 Norte, La Serena, Chile

¹⁰Department of Physics and Astronomy ‘Augusto Righi’, University of Bologna, via Gobetti 93/2, I-40129 Bologna, Italy

Accepted 2022 April 18. Received 2022 March 29; in original form 2021 October 15

ABSTRACT

Feedback from active galactic nuclei (AGNs) has become established as a fundamental process in the evolution of the most massive galaxies. Its impact on Milky Way (MW)-mass systems, however, remains comparatively unexplored. In this work, we use the AURIGA simulations to probe the impact of AGN feedback on the dynamical and structural properties of galaxies, focusing on the bar, bulge, and disc. We analyse three galaxies – two strongly and one unbarred/weakly barred – using three setups: (i) the fiducial AURIGA model, which includes both radio and quasar mode feedback, (ii) a setup with no radio mode, and (iii) one with neither the radio nor the quasar mode. When removing the radio mode, gas in the circumgalactic medium cools more efficiently and subsequently settles in an extended disc, with little effect on the inner disc. Contrary to previous studies, we find that although the removal of the quasar mode results in more massive central components, these are in the form of compact discs, rather than spheroidal bulges. Therefore, galaxies without quasar mode feedback are more baryon-dominated and thus prone to forming stronger and shorter bars, which reveals an anticorrelation between the ejective nature of AGN feedback and bar strength. Hence, we report that the effect of AGN feedback (i.e. ejective or preventive) can significantly alter the dynamical properties of MW-like galaxies. Therefore, the observed dynamical and structural properties of MW-mass galaxies can be used as additional constraints for calibrating the efficiency of AGN feedback models.

Key words: galaxies: bulges – galaxies: bar – galaxies: evolution – galaxies: kinematics and dynamics – galaxies: structure.

1 INTRODUCTION

Observational evidence suggests that bars exist in the centres of over half of local spiral galaxies (Eskridge et al. 2000; Aguerri, Méndez-Abreu & Corsini 2009; Nair & Abraham 2010; Buta et al. 2015; Erwin 2018). From a theoretical perspective, bars can form in isolated galaxies via discs instabilities (Hohl 1971; Ostriker & Peebles 1973; Efstathiou, Lake & Negroponte 1982) or in interacting discs through tidal forces (Noguchi 1996; Łokas et al. 2014), and subsequently grow in mass and size by redistributing angular momentum (Athanassoula 2003) and capturing disc stars (Athanassoula & Misiriotis 2002; Kim et al. 2016).

Numerous studies have identified significant correlations between galactic and bar properties, which reveal causal connections between

the two (e.g. Aguerri 1999; Laurikainen, Salo & Rautiainen 2002; Kim, Seo & Kim 2012; Athanassoula, Machado & Rodionov 2013). Moreover, in most late-type barred galaxies, bars coexist with multiple components, such as bulges and supermassive black holes (SMBH) (Kormendy & Kennicutt 2004; Knapen 2010; Athanassoula 2013), and each one affects and is affected by the others in non-linear ways. For example, while bars evolve they push gas to the centre which can in principle both promote the formation of pseudo-bulges (Shlosman, Frank & Begelman 1989; Sellwood & Moore 1999; Kormendy 2013; Fanali et al. 2015; Gavazzi et al. 2015; Fragkoudi, Athanassoula & Bosma 2016) and fuel the accretion disc around the SMBH (Lynden-Bell 1969; Shlosman, Begelman & Frank 1990; Silk & Rees 1998; Begelman 2004; McNamara & Nulsen 2012). As a response, powerful AGN feedback can suppress the gas inflow (e.g. Rafferty et al. 2006) and halt the growth of the pseudo-bulge. Hence, bars not only significantly alter the structural properties of galaxies, but also take part in a complex interplay with other components.

* E-mail: dimitrios.irodotou@helsinki.fi

Energetic feedback is the natural culprit for shutting off the formation of stars via (at least) two modes, namely the quasar and the radio mode, which are differentiated by their distinct effect. The former is responsible for directly ejecting gas, whereas the latter for preventing gas from cooling effectively (e.g. Dekel & Birnboim 2006; Fabian 2012; Gabor & Bournaud 2014; Costa et al. 2018; Costa, Pakmor & Springel 2020; Zinger et al. 2020). This is the reason why AGN feedback has been considered a mechanism responsible for the quenching and formation of some early-type galaxies (ETGs). For example, Dubois et al. (2016), Penoyre et al. (2017), and Frigo et al. (2019) showed that AGN feedback is important in order to produce massive slow-rotating ETGs (Emsellem et al. 2007) since it prevents them from developing young fast-rotating stellar discs. In lower mass haloes ($\sim 10^{12} M_{\odot}$), AGN feedback has been regarded as ineffectual, and is therefore often not included in simulations (e.g. Colín et al. 2016; Roca-Fàbrega et al. 2016; Zhu & Li 2016). However, as we will show below, MW-mass galaxies can also be affected by powerful AGN which plays a fundamental role for their properties (see Su et al. 2021, and references therein) and regulates the formation of their constituent stellar components and gas reservoirs (Hani et al. 2019; Valentini et al. 2020).

Recent studies have explored the properties of bars in cosmological simulations (e.g. Algorry et al. 2017; Peschken & Łokas 2019; Rosas-Guevara et al. 2020; Rosas-Guevara et al. 2021; Reddish et al. 2022). Furthermore, a series of works by Bonoli et al. (2016), Spinoso et al. (2017), and Zana et al. (2019) have studied in more detail the link between AGN feedback and bars. Bonoli et al. (2016) showed that adding AGN feedback to the ERIS simulation, promoted the formation of a bar in a MW-mass galaxy, by suppressing the growth of a massive spheroidal component at the centre, whose presence would otherwise stabilize the disc and delay bar formation (Combes et al. 1990; Athanassoula 2013). However, theoretical studies have also shown that, after the bar has formed, a classical bulge is expected to amplify the transfer of angular momentum from the bar to the bulge which results in the bar losing angular momentum, slowing down, and becoming stronger (Athanassoula 2003; Saha, Martínez-Valpuesta & Gerhard 2012). Thus, classical bulges can both delay bar formation and fuel bar growth after the bar has been able to form.

While there has been recent work exploring the bar-AGN feedback connection (e.g. Bonoli et al. 2016; Spinoso et al. 2017; Zana et al. 2019; Rosas-Guevara et al. 2020, 2021), there are still a number of open questions related to how AGN feedback, and in particular how different modes of this feedback (e.g. ejective versus preventive) affect the dynamics of disc galaxies. In this work, we therefore study the impact of AGN feedback on the structural and dynamical properties of MW-mass galaxies, by exploring in detail the effects of two different modes of AGN feedback in the AURIGA simulations, the so-called quasar and radio mode. In particular, we assess to what extent the AURIGA AGN implementation affects the growth and properties of the disc, bar, and bulge. For that purpose, we selected three galaxies – two strongly and one very weakly barred – from the AURIGA project (Grand et al. 2017) and re-simulated each one with two different AGN feedback setups whilst keeping their initial conditions and other physical processes identical to the fiducial model. The AURIGA simulations¹ provide an ideal testbed for our analysis, since they produce realistic barred galaxies with prominent boxy/peanut and pseudo-bulges (Gargiulo et al. 2019; Blázquez-Calero et al. 2020; Fragkoudi et al. 2020, 2021).

This paper is organized as follows. In Section 2, we briefly describe the AURIGA model and its AGN feedback implementation along with the simulations we use for this study. In Section 3, we present the $z = 0$ morphologies and properties of the galaxies, and analyse the radial profile of the bar strength and that of the stellar distribution. Finally, we estimate the relative contribution of the bar, bulge, and disc component to the total stellar mass by performing photometric 2D decompositions. In Section 4 and Section 5, we analyse the effects of, respectively, the quasar and radio modes of AGN feedback on the temporal evolution of the galaxies. Finally, in Section 6 we discuss our findings in the context of previous results in the literature and summarize our results in Section 7.

2 THE AURIGA SIMULATIONS

The AURIGA project² is a suite of cosmological magnetohydrodynamical zoom-in simulations of isolated MW-mass haloes (Grand et al. 2017). These were selected from the dark-matter-only EAGLE Ref-L100N1504 cosmological volume (Schaye et al. 2015) and re-simulated at higher resolution with the N -body, magnetohydrodynamics code AREPO (Springel 2010; Pakmor, Bauer & Springel 2011; Pakmor et al. 2016; Weinberger, Springel & Pakmor 2020). The simulations incorporate a detailed galaxy formation model which includes primordial and metal-line cooling (Vogelsberger et al. 2013), a hybrid multiphase star formation model (Springel & Hernquist 2003), supernova feedback in the form of an effective model for galactic winds and mass and metal return from AGB stars and SNIa (Marinacci, Pakmor & Springel 2014; Grand et al. 2017), a redshift-dependent and spatially uniform UV background (Faucher-Giguère et al. 2009; Vogelsberger et al. 2013), magnetic fields (Pakmor & Springel 2013; Pakmor, Marinacci & Springel 2014; Pakmor et al. 2017, 2018), and a black hole formation and feedback model which we describe in more details below.

In this work, we use nine AURIGA haloes: three fiducial runs, first presented in Grand et al. (2017), namely Au-06, Au-17, and Au-18, plus two additional model variants for each one which were simulated for the needs of this study. These variants are as follows:

- (i) the **NoR** (i.e. no-radio) variants have black hole particles (which grow via gas accretion and mergers) and black hole feedback through the quasar mode, but the radio mode feedback is turned off.
- (ii) the **NoRNoQ** (i.e. no-radio-no-quasar) variants have their black hole particles, and both quasar mode and radio mode feedback, removed.

For this study we use two galaxies, Au-17 and Au-18, which are strongly barred at $z = 0$ and have been extensively studied in previous works (e.g. Grand et al. 2019, 2020; Blázquez-Calero et al. 2020; Fragkoudi et al. 2020, 2021). In addition, we analyse Au-06 which can be considered unbarred or weakly barred depending on the threshold used (see Section 3.1 for our definition of bar strength), which allows us to draw conclusions about the effects of AGN feedback on unbarred and weakly barred cases, as we discuss in Section 6.3.

Throughout this work we use the level-4 resolution (based on the AQUARIUS project nomenclature; Springel et al. 2008) which corresponds to dark matter and baryonic particles masses of $3 \times 10^5 M_{\odot}$ and $5 \times 10^4 M_{\odot}$, respectively. The gravitational comoving softening length for stellar and dark matter particles is set to 500

¹<https://wwwmpa.mpa-garching.mpg.de/auriga/>

²AURIGA is a project of the Virgo consortium for cosmological supercomputer simulations <http://virgo.dur.ac.uk>.

h^{-1} cpc and is set to a fixed value of $250 h^{-1}$ pc from $z = 1$ onwards. This is equal to the minimum co-moving softening length allowed for gas cells, while their maximum physical softening length cannot exceed 1.85 kpc. For more details on the simulations we refer the reader to Grand et al. (2017). In the following subsection, we describe the AGN feedback prescription in the AURIGA simulations.

2.1 Black hole and AGN feedback model

Black holes come into existence by converting the densest gas cell into a collision-less sink particle in Friends-of-Friends (FoF) groups whose mass exceeds $5 \times 10^{10} h^{-1} M_{\odot}$. The initial (seed) mass is set to $10^5 h^{-1} M_{\odot}$ which can increase either by acquiring mass from nearby gas cells or by merging with other black hole particles (Springel, Di Matteo & Hernquist 2005; Vogelsberger et al. 2013). The former is described by an Eddington-limited Bondi–Hoyle–Lyttleton accretion (Hoyle & Lyttleton 1939; Bondi & Hoyle 1944; Bondi 1952) along with a term to account for the radio mode accretion (see below). Hence, the total black hole accretion rate can be expressed by

$$\dot{M}_{\text{BH}} = \min [\dot{M}_{\text{BHL}} + \dot{M}_{\text{radio}}, \dot{M}_{\text{Edd}}], \quad (1)$$

where the term \dot{M}_{Edd} represents the Eddington accretion rate which is defined as

$$\dot{M}_{\text{Edd}} = \frac{4\pi G M_{\text{BH}} m_{\text{pr}}}{\epsilon_r \sigma_{\text{T}} c}, \quad (2)$$

where G is the gravitational constant, M_{BH} is the black hole mass, m_{pr} is the proton mass, $\epsilon_r = 0.2$ is the black hole radiative efficiency parameter, σ_{T} is the Thomson cross-section, and c is the speed of light.

Finally, for both modes the energy ejected from the black hole is given by

$$\dot{E} = \dot{M}_{\text{BH}} \epsilon_f \epsilon_r c^2, \quad (3)$$

where \dot{M}_{BH} is given by equation (1) and $\epsilon_f = 0.07$ is the fraction of radiated energy that thermally couples to the gas. For the quasar mode this energy is injected isotropically as thermal energy into neighbouring gas cells; while for the radio mode (Sijacki et al. 2007) it takes the form of bubbles (with size 0.1 times the virial radius) which are stochastically inflated at random locations in the halo³ up to a maximum radius of 0.8 times the virial radius.

2.1.1 Quasar mode

In equation (1), the term \dot{M}_{BHL} represents the Bondi–Hoyle–Lyttleton accretion rate which is defined as

$$\dot{M}_{\text{BHL}} = \frac{4\pi G^2 M_{\text{BH}}^2 \rho}{(c_s^2 + v_{\text{BH}}^2)^{3/2}}, \quad (4)$$

where ρ and c_s are the density and sound speed, respectively, of the surrounding gas, and v_{BH} is the velocity of the black hole relative to the gas.

2.1.2 Radio mode

In equation (1), the term \dot{M}_{radio} represents the radio mode accretion rate which is defined as

$$\dot{M}_{\text{radio}} = \frac{L_{\text{radio}}}{\epsilon_f \epsilon_r c^2}. \quad (5)$$

³Following an inverse square distance profile around the black hole.

This term follows a scheme in which first the X-ray luminosity of the halo (L_X) is converted to a radio mode luminosity (L_{radio}), which is then used to define the radio mode accretion rate. This scheme establishes a self-regulated feedback mechanism by following the process described below.

We first measure the X-ray luminosity on a per FoF halo basis by following the observed X-ray luminosity–temperature relation (Pratt et al. 2009)

$$L_X = \frac{H(z)}{H_0} C \left(\frac{T}{T_0} \right)^{2.7}, \quad (6)$$

where $H(z)$ and H_0 are the Hubble parameter and Hubble constant, respectively, $C = 6 \times 10^{44}$ erg s^{−1}, and $T_0 = 5$ Kev. Then we follow Nulsen & Fabian (2000) who developed a theory for spherically symmetric accretion of hot gas on to supermassive black holes at the centres of large haloes. This theory connects the accretion rate back to the state of the gas at large distances away from the black hole based on the formula

$$\dot{M}'_{\text{BH}} = \frac{2\pi Q(\gamma - 1)k_B T_{\text{vir}}}{\mu m_{\text{H}} \Lambda(T_{\text{vir}})} G M'_{\text{BH}} \left[\frac{\rho^2}{n_e n_{\text{H}}} \right] \mathcal{M}^{3/2}, \quad (7)$$

where $Q = 2.5$, $\gamma = 5/3$ is the adiabatic index of the gas, k_B is the Boltzmann constant, T_{vir} is the virial temperature, μm_{H} is the mean mass per gas cell, $\Lambda(T_{\text{vir}})$ is the cooling function, ρ , n_e , and n_{H} are the mean gas, electron number, and hydrogen number densities, respectively, $\mathcal{M} = 0.0075$ is the Mach number of the gas far away from the black hole, and M'_{BH} is derived from the observed $M_{\text{BH}}-\sigma$ relation

$$M'_{\text{BH}}(\sigma) = M_0 \left(\frac{\sigma}{\sigma_0} \right)^4, \quad (8)$$

where σ is the velocity dispersion of stars in the galactic bulge. Lastly, we assume a radio power associated with this radio mode accretion which can be written as

$$L_{\text{radio}} = R(T_{\text{vir}}, z) L_X, \quad (9)$$

where L_X is the X-ray luminosity of the halo introduced in equation (6) and we define the ratio

$$R(T_{\text{vir}}, z) \equiv \frac{\epsilon_f \epsilon_r c^2 \dot{M}'_{\text{BH}}}{L_X}, \quad (10)$$

which tends to increase for larger haloes and towards later times.

3 PROPERTIES AT $z = 0$

In this section, we investigate the effects of the AGN feedback (or the lack of it) on the $z = 0$ stellar surface densities and bar strengths (Section 3.1) and on the total stellar mass (Section 3.2) and its distribution (Section 3.3).

3.1 Morphological properties

Fig. 1 shows the stellar surface density projection at $z = 0$. The top, middle, and bottom rows contain results for Au-06, Au-17, and Au-18, respectively. The left-hand, middle, and right-hand columns contain results for the fiducial halo, the NoR, and the NoRNoQ variant, respectively. Each row contains a face-on (top panel) and an edge-on (bottom panel) projection.

A notable difference between each fiducial halo and its two variants is the distribution of stellar particles in the central regions which reflects dynamically distinct components. For example, we can see that removing AGN feedback from a weakly barred galaxy (Au-06)

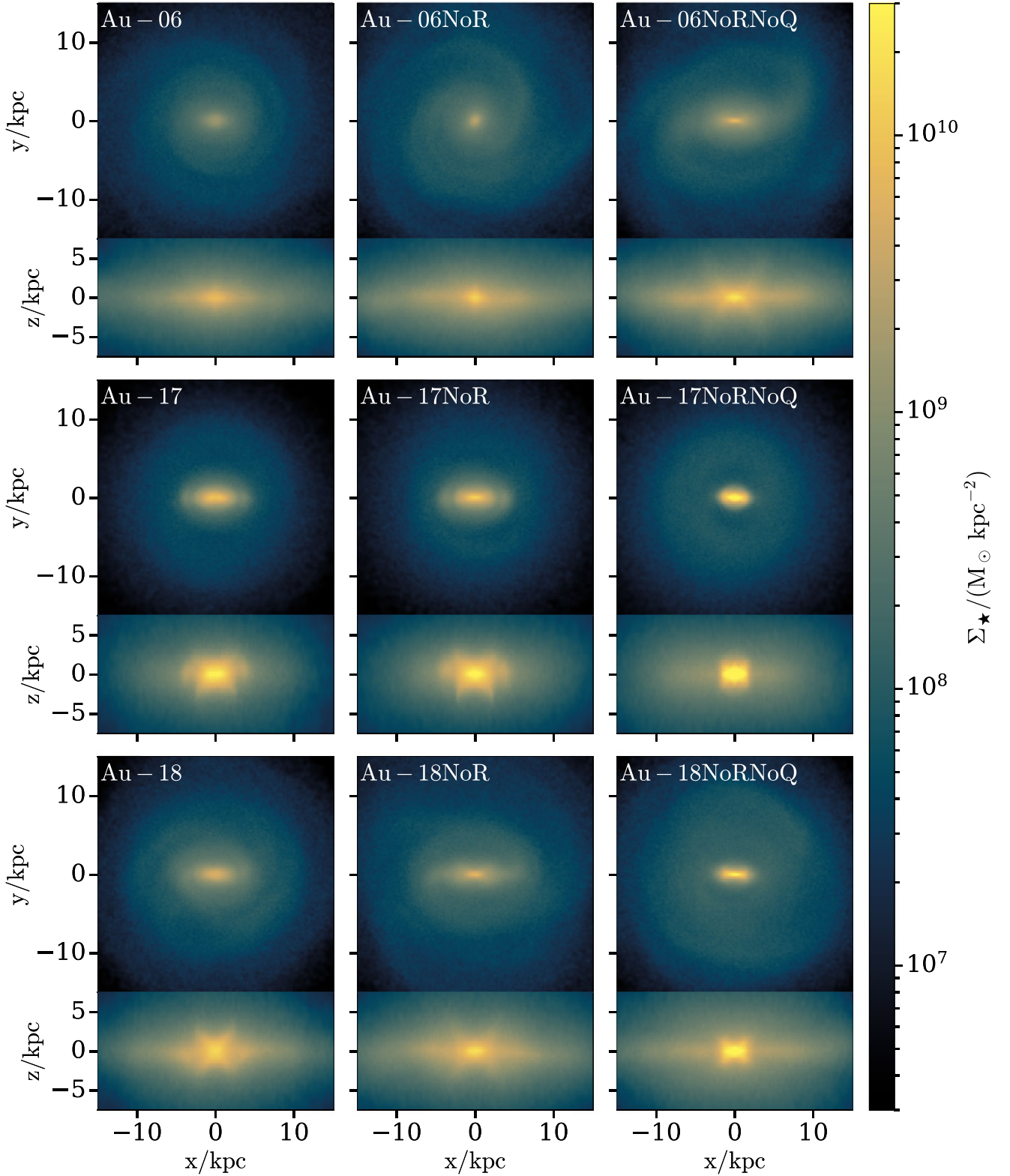


Figure 1. Stellar surface density projection at $z = 0$. The top, middle, and bottom rows contain results for Au-06, Au-17, and Au-18, respectively. The left-hand, middle, and right-hand columns contain results for the fiducial halo, the NoR, and the NoRNoQ variant, respectively. Each row contains a face-on (top panel) and an edge-on (bottom panel) projection. Prominent boxy/peanut bulges appear in most edge-on projections.

gives rise to the formation of a bar, which when viewed edge-on reveals a prominent peanut bulge (see Laurikainen & Salo 2016, for a review). This characteristic X-shaped feature has been studied in numerous observed (Whitmore & Bell 1988; Mihos et al. 1995; Bureau et al. 2006; Laurikainen & Salo 2017) and simulated galaxies (Combes & Sanders 1981; Combes et al. 1990; Pfenniger & Friedli 1991; Martinez-Valpuesta, Shlosman & Heller 2006) and its origin has been connected with either vertical resonance orbits with 2:1⁴ frequency ratio (Quillen 2002; Quillen et al. 2014; Parul, Smirnov & Sotnikova 2020) or buckling instabilities (Raha et al. 1991; Merritt & Sellwood 1994).

To be able to quantitatively compare the bar strength between the different setups, we follow Athanassoula et al. (2013) and calculate the Fourier components of the face-on stellar density as

$$a_m(R) = \sum_{i=0}^N m_i \cos(m\theta_i), \quad m = 0, 1, 2, \dots, \quad (11)$$

$$b_m(R) = \sum_{i=0}^N m_i \sin(m\theta_i), \quad m = 0, 1, 2, \dots, \quad (12)$$

where R is the cylindrical radius, m_i is the mass, θ_i is the azimuthal angle of stellar particle i , and the sum goes over all N stellar particles. Hence, the bar strength is obtained from the maximum value of the $m = 2$ relative Fourier component as

$$A_2 = \max \left(\frac{\sqrt{a_2^2(R) + b_2^2(R)}}{a_0(R)} \right), \quad (13)$$

and in this work we define a strongly barred galaxy as one having $A_2 \geq 0.3$ (Fragkoudi et al. 2020) and a weakly barred as one having $0.2 \leq A_2 < 0.3$. We term Au-06 a very weakly barred galaxy since, as we show below, its bar strength reaches values just above 0.2. In addition, we visually check the morphology of each galaxy in order to ensure that a bar structure exists and that the A_2 values are not artificially high due to mergers/interactions.

Fig. 2 shows the radial profile of the relative amplitude of the $m = 2$ Fourier component at $z = 0$ (top row) along with the evolution of the bar strength (bottom row). In each row the left-hand, middle, and right-hand panels contain results for Au-06, Au-17, and Au-18, respectively. The black, orange, and purple curves show the fiducial halo, the NoR, and the NoRNoQ variant, respectively. In the top row, the vertical dashed black, orange, and purple lines show the radius of the maximum of the A_2 profile for the fiducial halo, the NoR, and the NoRNoQ variant, respectively. In the bottom row, the black, orange, and purple arrows point at the bar formation time (which we define as the time at which A_2 crosses the weak or strong bar threshold and never drops below it for more than two snapshots) of the fiducial halo, the NoR, and the NoRNoQ variant, respectively.

Au-17 and Au-18 – which are both strongly barred galaxies – show a significant increase on their bar strength when the quasar mode feedback is turned off (i.e. in their NoRNoQ variants), whilst the NoR variants show small deviations from the fiducial haloes. In addition, we see that all NoRNoQ variants form persistently strong bars before the corresponding fiducial halo and the NoR variant, hence the NoRNoQ bars are both stronger and form earlier, as indicated by the arrows in the bottom row of Fig. 2. Therefore, Fig. 2 suggests that the lack of AGN quasar mode not only can enhance the strength of a bar (as is the case for Au-17 and Au-18) but it can also turn a very weakly barred galaxy (Au-06) into a strongly barred one (Au-06NoRNoQ).

⁴Two vertical oscillations for every revolution in the bar frame.

While the bar strength is increased in the NoRNoQ variants, we find that the length of the bar in these runs decreases. There are several methods one can use to estimate the length of the bar (e.g. Athanassoula & Misiriotis 2002); here we use a proxy for the bar length the radius of the maximum relative $m = 2$ Fourier component (A_2). While this method underpredicts the true length of bars (e.g. Hilmi et al. 2020) in this work we are only interested in comparing the bar length between different variants of the same halo, and for such purposes the maximum of A_2 is sufficient. As can be seen by this method, all NoRNoQ runs produce shorter bars than their fiducial and NoR counterparts. However, as discussed by Erwin (2005) and Gadotti (2011) larger galaxies contain larger bars. Hence, in order to check the robustness of this conclusion and any potential dependence of bar length on disc scale length or morphology (Athanassoula & Martinet 1980; Elmegreen & Elmegreen 1985; Martin 1995), in Section 3.3 we provide an additional estimate of the bar length (based on photometric decomposition) where we normalize it by the galaxy size.

In order to further investigate the co-evolution of bars and black holes, we explore the relation between bar formation and black hole mass evolution (see also Section 4 and Section 5 for the evolution of the AGN feedback energy).

Fig. 3 shows the evolution of the black hole mass–stellar mass relation. The left-hand, middle, and right-hand panels contain results for Au-06, Au-17, and Au-18, respectively. The black and orange curves show results for the fiducial halo and the NoR variant, respectively.⁵ The black and orange vertical bar symbols indicate the bar formation time for the fiducial halo and the NoR variant, respectively. The grey dashed and dotted lines show the Sahu et al. (2019) sample of local, early-type barred galaxies and the Davis et al. (2018) sample of local spiral galaxies, respectively. The shaded regions show the 1σ rms scatter in the data of the aforementioned observational studies.

We see that both galaxies with AGN feedback and their NoR variants end up at $z = 0$ in good agreement with observations. In addition, we find no obvious relation between black hole mass and bar formation time, in agreement with past theoretical and observational studies (e.g. Goulding et al. 2017; Rosas-Guevara et al. 2020). However, as we further discuss in Section 6, we intend to explore in depth how bars affect the growth of black holes in AURIGA galaxies, in a future study.

3.2 Stellar–halo mass relation

Fig. 4 shows the stellar mass as a function of the halo mass at $z = 0$. The former is defined as the sum over all stellar particles within $0.1R_{200}$ and the latter as the sum over all mass elements within R_{200} . The circles, triangles, and squares represent Au-06, Au-17, and Au-18, respectively. The black, orange, and purple colours represent the fiducial halo, the NoR, and the NoRNoQ variant, respectively. The dashed diagonal line shows the baryon conversion efficiency (Guo et al. 2010; Moster, Naab & White 2013) with $\Omega_m = 0.307$ and $\Omega_b = 0.048$ (Planck Collaboration XVI 2014; Grand et al. 2017), and the dotted curve the stellar–halo mass relation from Guo et al. (2010).

As expected, there is a clear trend which shows that all fiducial haloes have lower stellar masses than their NoR variants which in turn have lower stellar masses than their NoRNoQ variants. Arguably, the

⁵We remind the reader that the NoRNoQ variants are not included in this plot since their black hole particles have been completely removed.

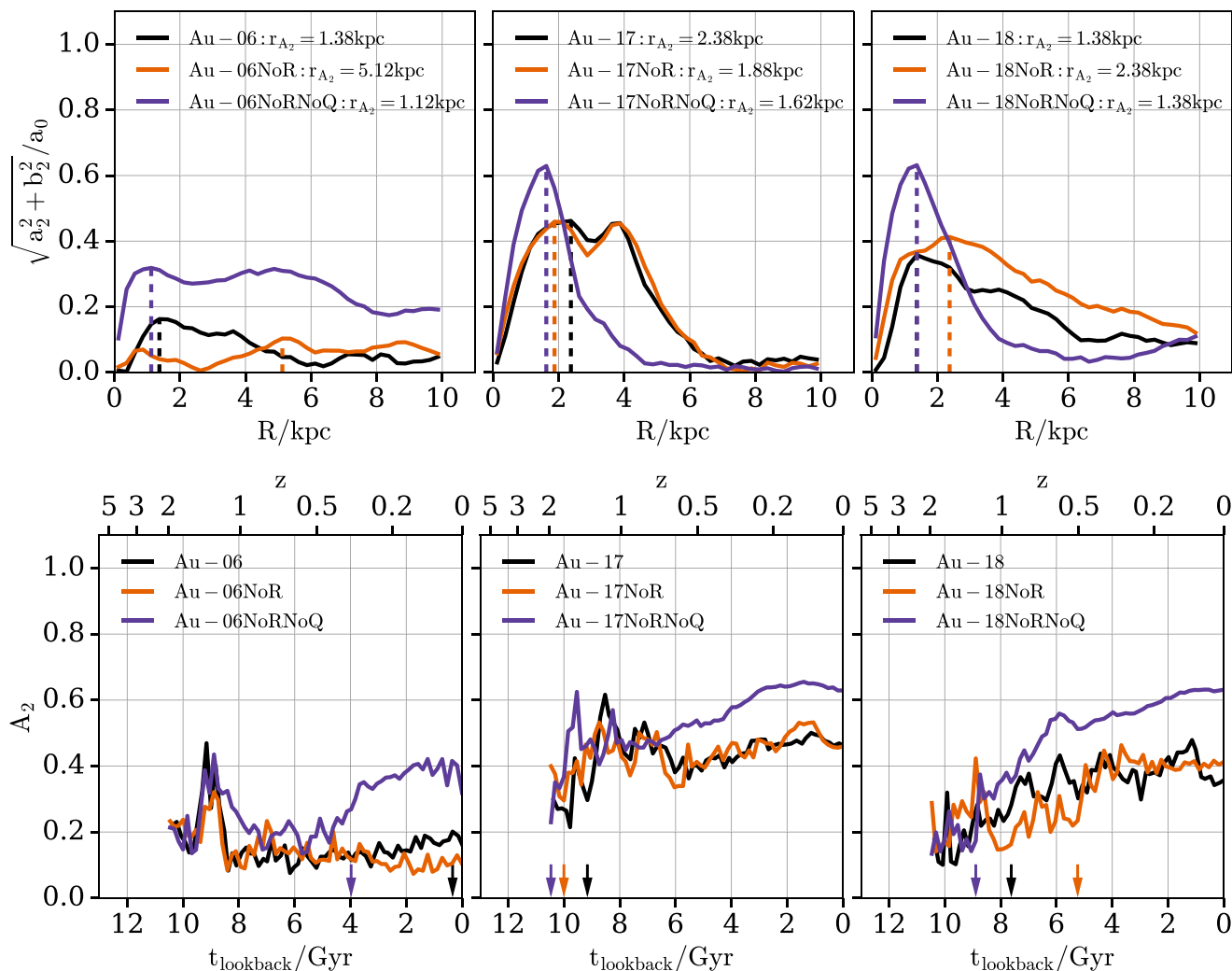


Figure 2. Radial profile of the relative amplitude of the $m = 2$ Fourier component at $z = 0$ (top row) along with the evolution of the bar strength (bottom row). In each row the left-hand, middle, and right-hand panels contain results for Au-06, Au-17, and Au-18, respectively. The black, orange, and purple curves show the fiducial halo, the NoR, and the NoRNoQ variant, respectively. In the top row, the vertical dashed black, orange, and purple lines show the radius of the maximum of the A_2 profile for the fiducial halo, the NoR, and the NoRNoQ variant, respectively. In the bottom row, the black, orange, and purple arrows point at the bar formation time (see the text for more information) of the fiducial halo, the NoR, and the NoRNoQ variant, respectively. All NoRNoQ variants have stronger (i.e. higher A_2 values) and shorter bars than the fiducial and NoR variants and they develop them earlier.

NoR and NoRNoQ variants move (almost) vertically in the stellar-halo mass plane hence these galaxies end up further away from the abundance matching predictions (Behroozi, Conroy & Wechsler 2010; Moster et al. 2010). It is worth noting that, as has been already reported by Grand et al. (2017) (see their section 5.3), even the fiducial haloes lie above the abundance matching relation, since the AGN feedback can be insufficient in suppressing early star formation. However, having galaxies more massive than what the abundance matching relation dictates can in fact lead to bars which rotate fast (i.e. have a corotation/bar length ratio less than 1.4) which is more consistent with what is found in observations (Fragkoudi et al. 2021).

Investigating how this additional stellar mass in the NoR and NoRNoQ variants (compared to the fiducial haloes) is distributed in the galaxy is essential in order to understand its dynamical and structural properties. It is well known that massive discs are prone to disc instabilities and bar formation (Efstathiou et al. 1982; Mo, Mao & White 1998; Yurin & Springel 2015; Irodotou et al. 2019). On the other hand, a substantial central component tends to delay or even suppress bar formation (Athanasoula 2004, 2013;

Kataria & Das 2019). In order to identify which of the above two mechanisms is the dominant one in our galaxies, we analyse below the distribution of stellar mass and calculate the relative contribution of the bar/bulge/disc to the total stellar mass by performing a 2D three-component decomposition.

3.3 Stellar mass distribution

Fig. 5 shows the radial stellar surface density profiles at $z = 0$. The top, middle, and bottom rows contain results for Au-06, Au-17, and Au-18, respectively. The left-hand, middle, and right-hand columns contain results for the fiducial halo, the NoR, and the NoRNoQ variant, respectively. We only consider stellar particles within $0.1R_{200}$ along the disc plane (vertical dashed grey line) and ± 5 kpc in the vertical direction. The total fitted profile (black curve) is a combination of a Sérsic (orange curve) and exponential (purple curve) profile and it was carried out using a non-linear least-squares method (Marinacci et al. 2014; Grand et al. 2017).

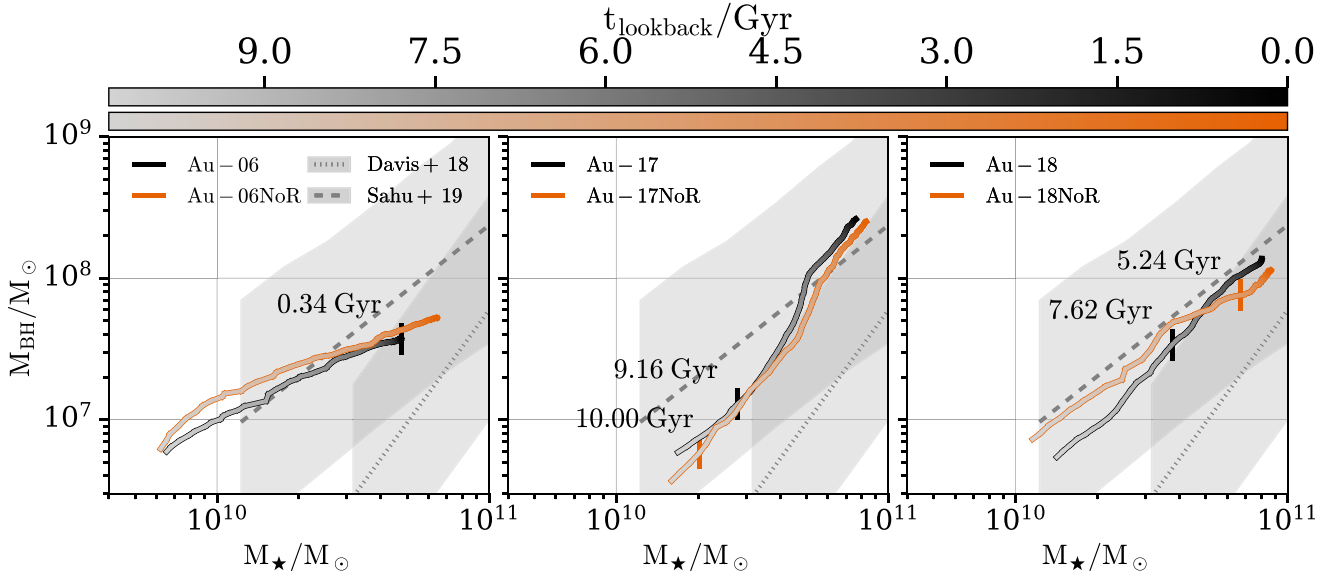


Figure 3. Evolution of the black hole mass–stellar mass relation. The left-hand, middle, and right-hand panels contain results for Au-06, Au-17, and Au-18, respectively. The black and orange curves show results for the fiducial halo and the NoR variant, respectively. The black and orange vertical bar symbols indicate the bar formation time for the fiducial halo and the NoR variant, respectively. The grey dashed and dotted lines show the Sahu, Graham & Davis (2019) sample of local, early-type barred galaxies and the Davis, Graham & Cameron (2018) sample of local spiral galaxies, respectively. The shaded regions show the 1σ rms scatter in the data of the aforementioned observational studies. Galaxies with and without radio mode feedback follow similar paths on the black hole mass–stellar mass plane.

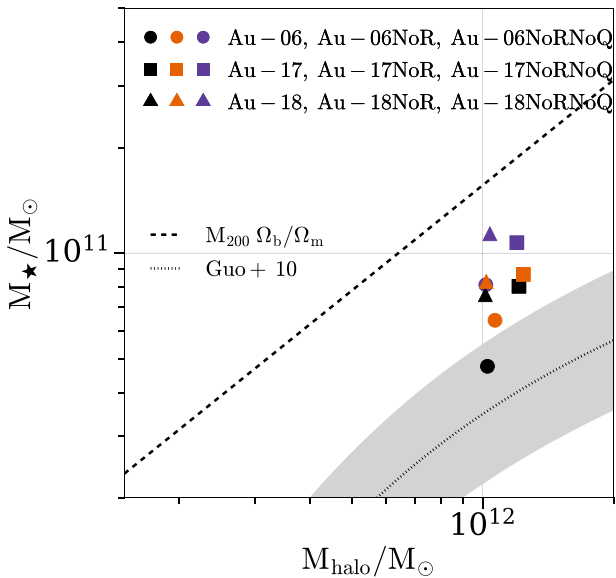


Figure 4. Stellar mass as a function of the halo mass at $z = 0$. The former is defined as the sum over all stellar particles within $0.1R_{200}$ and the latter as the sum over all mass elements within R_{200} . The circles, triangles, and squares represent Au-06, Au-17, and Au-18, respectively. The black, orange, and purple colours represent the fiducial halo, the NoR, and the NoRNoQ variant, respectively. The dashed diagonal line shows the baryon conversion efficiency (see the text for more information) and the dotted curve the stellar–halo mass relation from Guo et al. (2010). For all galaxies the NoRNoQ variant has a more massive stellar component than the NoR, which in turn is more massive than the fiducial galaxy.

The steepening of the stellar surface density profiles in the very centre as we move from the fiducial to the NoR and NoRNoQ variants indicates the higher concentration of mass in the centre. This behaviour reveals that there is an excess of central mass in these variants which is not present in the fiducial haloes. The fitting data appearing in Table 1 further illustrates this point. As shown in Section 3.2, when either the radio mode or both AGN modes are turned off, the resulting galaxy becomes more massive, as expected. This is reflected in the increase of the stellar mass inferred both from the Sérsic (sixth row) and the exponential (ninth row) profiles, respectively. However, the relative contribution of the disc to the total stellar mass (D/T) presented in the last row shows that all NoRNoQ variants’ D/T ratios decrease. In other words, their central components (i.e. the ones fitted with a Sérsic profile) not only become more massive but also have higher relative contributions to the total stellar mass (see also Appendix C). At the same time these components also decrease their effective radii. Hence, the lack of AGN feedback results in both more massive and more concentrated central distributions of mass. A similar conclusion is hard to draw for the NoR runs since they do not seem to have a consistent behaviour (Au-06NoR, Au-17NoR, and Au-18NoR have, respectively, higher, the same, and lower D/T with respect to their fiducial haloes).

Regarding the disc components (i.e. the ones fitted with an exponential profile), we find that the scale lengths of Au-17 and Au-18 – which are both strongly barred galaxies – increase when the radio mode feedback is turned off since their circumgalactic medium (CGM) gas can cool more efficiently and settle in a more extended disc. A similar trend was found by Grand et al. (2017) (see their section 4.3) who re-simulated Au-22 with its AGN feedback turned off after $z = 1$, and showed that AGN feedback can suppress the formation of a large stellar disc. However, we see that Au-06 – our very weakly barred galaxy – does not follow the same trend as its NoR variant has a smaller disc (see also discussion below).

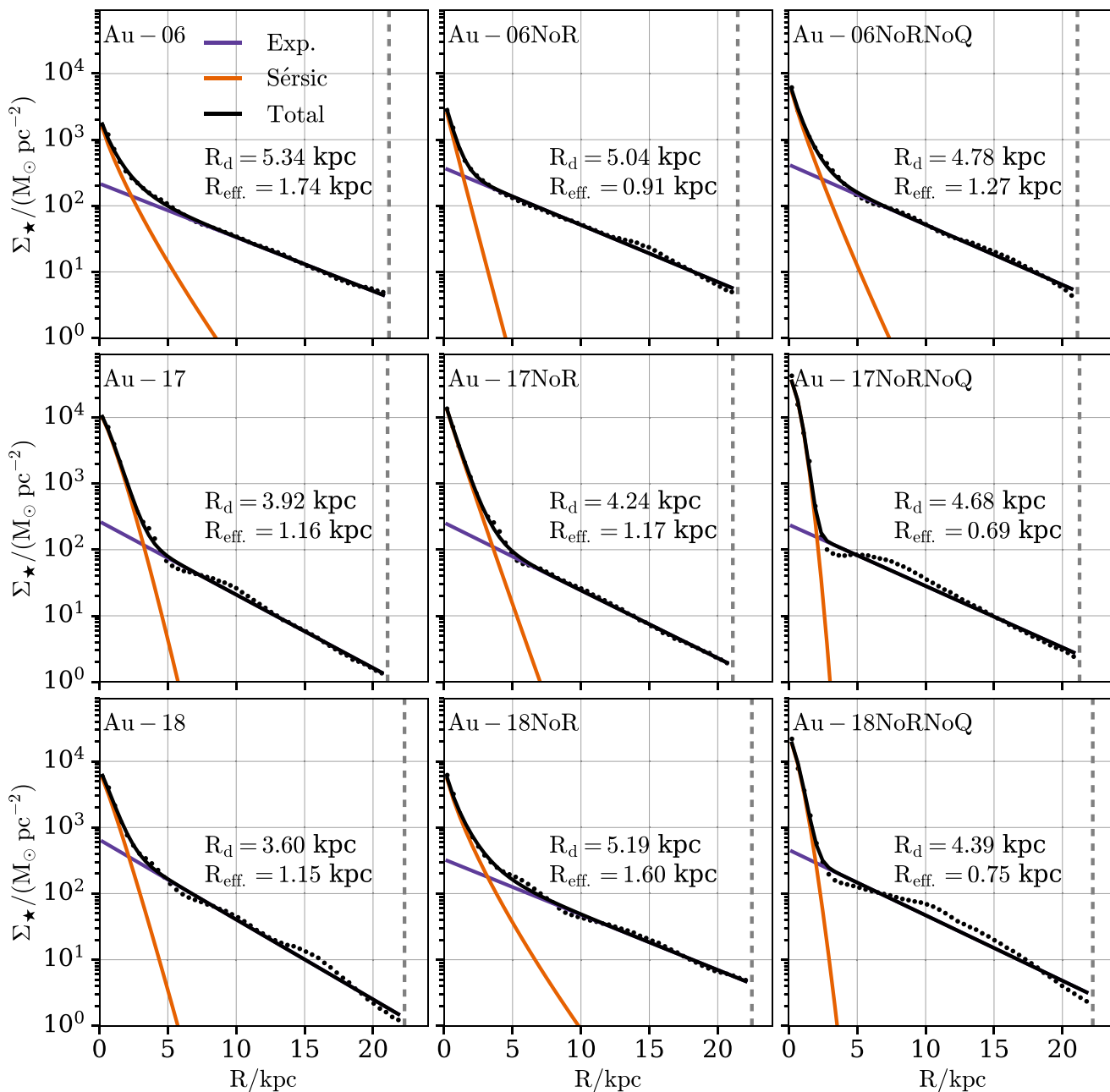


Figure 5. Radial stellar surface density profiles at $z = 0$. The top, middle, and bottom rows contain results for Au-06, Au-17, and Au-18, respectively. The left-hand, middle, and right-hand columns contain results for the fiducial halo, the NoR, and the NoRNoQ variant, respectively. We only consider stellar particles within $0.1R_{200}$ along the disc plane (vertical dashed grey line) and ± 5 kpc in the vertical direction. The total fitted profile (black curve) is a combination of a Sérsic (orange curve) and exponential (purple curve) profile and it was carried out using a non-linear least-squares method (Marinacci et al. 2014; Grand et al. 2017). The NoR and NoRNoQ variants have higher concentration of stellar mass in the central regions compared to their fiducial halo.

In order to understand the effect of AGN feedback on the structure of MW-mass galaxies, it is important to identify in which components these additional stellar particles belong to. Do they form a classical or a pseudo-bulge, or are they part of a bar? To address this question, we use IMFIT⁶ (Erwin 2015) to perform a 2D bar/bulge/disc decomposition and quantify the change in the relative contribution of each component between the different variants. Since our intention

is to compare the fiducial AURIGA haloes with their NoR and NoRNoQ variants, we use images that accurately represent the mass distribution, not necessarily ones that mimic observations. Therefore, we fit each galaxy with a combination of the following profiles (see Table 2):

- (i) An elliptical 2D exponential function for the stellar disc component, with the major axis intensity profile given by

$$I(\alpha) = I_0 \exp(-\alpha/h), \quad (14)$$

⁶<https://www.mpe.mpg.de/~erwin/code/imfit/>

Table 1. The fitting parameters from Fig. 5. The rows represent (1) model names (three fiducial runs, namely Au-06, Au-17, and Au-18, plus a no-radio and a no-radio-no-quasar variant for each one); (2) total stellar mass as defined in Fig. 5; (4) Sérsic index; (5) effective radius; (6) inferred Sérsic mass; (8) scale length; (9) inferred disc mass; (10) disc-to-total stellar mass ratio.

	Au-06	Au-06NoR	Au-06NoRNoQ	Au-17	Au-17NoR	Au-17NoRNoQ	Au-18	Au-18NoR	Au-18NoRNoQ
$M_*/(10^{10} M_\odot)$	4.57	6.24	7.94	7.38	8.12	11.14	7.77	8.35	10.35
Sérsic									
n	1.28	1.02	1.17	0.81	1.05	0.59	0.90	1.35	0.70
$R_{\text{eff.}}/\text{kpc}$	1.74	0.91	1.27	1.16	1.17	0.69	1.15	1.60	0.75
$M_{\text{Sérsic}}/(10^{10} M_\odot)$	1.00	0.67	2.24	4.68	5.22	7.53	2.40	3.00	4.36
Exponential									
h/kpc	5.34	5.04	4.78	3.92	4.24	4.68	3.60	5.19	4.39
$M_d/(10^{10} M_\odot)$	3.89	5.95	6.01	2.58	2.89	3.29	5.31	5.58	5.55
D/T	0.80	0.90	0.73	0.36	0.36	0.30	0.70	0.65	0.56

Table 2. The fitting parameters from IMFIT. The rows represent (1) model names (three fiducial runs, namely Au-06, Au-17, and Au-18, plus a no-radio and a no-radio-no-quasar variant for each one); (3) scale length; (4) disc/total fraction; (6) Sérsic index; (7) effective radius; (8) bulge/total fraction; (10) ellipticity; (11) bar length; (12) bar/total fraction. Horizontal bar symbols indicate that the corresponding profile was not used in the corresponding galaxy.

	Au-06	Au-06NoR	Au-06NoRNoQ	Au-17	Au-17NoR	Au-17NoRNoQ	Au-18	Au-18NoR	Au-18NoRNoQ
Exponential									
h/kpc	8.20	9.61	7.99	5.11	4.69	5.04	6.85	8.50	7.88
Fraction	0.96	0.98	0.95	0.89	0.87	0.97	0.93	0.97	0.98
Sérsic									
n	–	0.79	–	–	–	–	–	–	–
r_e/kpc	–	2.58	–	–	–	–	–	–	–
Fraction	–	0.02	–	–	–	–	–	–	–
FerrersBar2D									
Ellipticity	0.60	–	0.59	0.55	0.60	0.60	0.60	0.69	0.66
$a_{\text{bar}}/\text{kpc}$	4.69	–	6.56	6.09	6.09	3.63	6.10	7.03	3.98
a_{bar}/h	0.57	–	0.82	1.19	1.30	0.72	0.89	0.82	0.51
Fraction	0.04	–	0.05	0.10	0.13	0.03	0.07	0.03	0.02

where I_0 is the central surface brightness, α is the distance from the image centre, and h is the scale length.

(ii) A 2D analogue of the Ferrers ellipsoid for the bar component where the intensity profile is given by

$$I(m) = I_0(1 - m^2)^n, \quad (15)$$

where n controls the sharpness of the truncation at the end of bar and m^2 is defined as

$$m^2 = \left(\frac{|x|}{\alpha}\right)^{c_0+2} \left(\frac{|y|}{b}\right)^{c_0+2}, \quad (16)$$

where x and y describe the position on the image, α and b are the semimajor and semiminor axes, respectively, and c_0 defines the shape of the isophotes (zero, negative, and positive values result in pure ellipses, discy, and boxy ellipses, respectively; see Athanassoula et al. 1990). We note that the intensity is constant on the ellipses and goes to zero outside a specific semimajor axis (sma) value (a_{bar}).

(iii) An elliptical 2D Sérsic function for the bulge component with the major axis intensity profile given by

$$I(\alpha) = I_e \exp \left\{ -b_n \left[\left(\frac{\alpha}{r_e} \right)^{1/n} - 1 \right] \right\}, \quad (17)$$

where I_e is the surface brightness at the half-light radius (r_e), n is the Sérsic index, and b_n is calculated for $n > 0.36$ via the polynomial approximation of Ciotti & Bertin (1999) and the approximation of MacArthur, Courteau & Holtzman (2003) for $n \leq 0.36$.

The decomposition parameters are presented in Table 2 and the corresponding plots in Appendix A. The only galaxy with a

prominent round central component (low ellipticity) is Au-06NoR (see Fig. A1). Hence, we choose an exponential plus a Sérsic profile to accurately model this galaxy; for the remaining galaxies we use an exponential plus a Ferrers profile since they do not appear to have a central spheroidal component. In general, our results are in agreement with the study of Blázquez-Calero et al. (2020). However, we find systematically larger disc scale lengths (by a factor of 1.2–1.5) that may be due to the slightly different methodologies employed in producing the images to be fitted and in the fitting itself. For example, Blázquez-Calero et al. (2020) fit all galaxies in their sample with three components (exponential+Sérsic+Ferrers).

As already mentioned in Section 3.1, Au-06 is a weakly barred galaxy which becomes a strongly barred one (i.e. $A_2 > 0.3$) when its AGN feedback is absent. This finding is further supported by its 2D decomposition, since we see that Au-06NoRNoQ's bar is longer and has higher contribution to the total galaxy mass compared to Au-06. Furthermore, even though Au-06NoRNoQ is more massive than Au-06 (see Fig. 4) we find that the former has smaller disc scale length than the latter. Hence, we report that when the AGN feedback of our weakly barred galaxy is turned off it results in a galaxy with longer and stronger bar (see Fig. 2) while its stellar disc shrinks.⁷

⁷From Table 1 we drew the same conclusion for Au-06NoR, however Table 2 suggests the opposite – the stellar disc of Au-06NoR is larger than that of Au-06. This disagreement may be due to the different profiles used for Au-06 (Sérsic + exponential in Table 1 and Ferrers + exponential in Table 2) since both decomposition methods are sensitive to parameters such as how well the inner components are fit and/or how far out the bulge and the disc extend.

On the contrary, for Au-17 and Au-18 (which are both strongly barred galaxies) we find that both the absolute (a_{bar}) and the normalized (a_{bar}/h) bar lengths of the NoRNoQ variants are shorter than those of the fiducial haloes. Moreover, these variants also have lower Bar/T ratios compared to their fiducial runs. In addition, we see that the absence of AGN feedback results in more extended discs which are also more massive, as reported in Section 3.2.

In summary, we find that Au-06NoRNoQ develops a bar which is longer than Au-06's, in contrast to Au-17NoRNoQ and Au-18NoRNoQ which form shorter bars than their fiducial haloes. Furthermore, we report that by completely removing the AGN feedback our galaxies become more prone to forming strong bars (i.e. with $A_2 > 0.3$), thus the increased concentration of stellar mass in the centres of the NoRNoQ variants in Fig. 5 does not represent a classical bulge-like population (see also Section 6). These results reveal a significant effect of ejective AGN feedback on the structure of MW-mass galaxies which has been previously thought to be negligible (Colín et al. 2016; Roca-Fàbrega et al. 2016; Zhu & Li 2016). This effect is particularly important for large-scale simulations, since different AGN implementations can change the morphology and dynamics of galaxies and consequently the corresponding statistical predictions (e.g. the fraction of barred galaxies in a particular simulated volume; Algorry et al. 2017; Peschken & Łokas 2019; Rosas-Guevara et al. 2020).

4 QUASAR MODE EFFECTS

As we saw in the previous section, the different AGN feedback variants give rise to different structural and dynamical properties. In this section, we explore how the quasar mode feedback affects our galaxies' star formation rate histories (Section 4.1) and gas properties (Section 4.2).

4.1 Star formation rate histories

Fig. 6 shows the star formation rate histories along with the normalized SFR difference between a variant and the fiducial halo defined as

$$(\delta\text{SFR})_{\text{norm.}} \equiv \frac{\text{SFR}_{\text{variant}} - \text{SFR}_{\text{fiducial}}}{\text{SFR}_{\text{fiducial}}}. \quad (18)$$

The top, middle, and bottom rows contain results for Au-06, Au-17, and Au-18, respectively. The left-hand, middle, and right-hand columns contain results inside spherical apertures with radii $0 < R/\text{kpc} \leq 1$, $1 < R/\text{kpc} \leq 5$, and $5 < R/\text{kpc} \leq 15$, respectively. Each row contains the star formation rate histories (top panel) and the normalized SFR differences (bottom panel). The black, orange, and purple lines represent the fiducial, the NoR, and the NoRNoQ variant, respectively.

As expected the NoRNoQ variants have on average the highest star-formation rates since the removed AGN feedback allows the gas to cool quicker and form stars more efficiently (see also the third row of fig. 17 of Grand et al. 2017). This effect is more prominent near the centre ($0 < R/\text{kpc} \leq 1$) for all haloes, which shows that the quasar mode has a significant effect on star formation in the inner regions. In the outer disc ($R/\text{kpc} > 1$), the NoR and NoRNoQ variants follow in most cases similar trends, suggesting that the quasar AGN feedback mode has lower impact on the star formation rates away from the centre compared to the radio mode.

However, AGN feedback is not the only mechanism that can affect star formation (see also Section 6). As seen in Section 3.1, all NoRNoQ variants have the strongest bars throughout their lifetime

and multiple studies that analysed the effects of bars on star formation concluded that (especially strong) bars can have an impact on central star formation (Gavazzi et al. 2015; Fragkoudi et al. 2016; Spinoso et al. 2017; Khoperskov et al. 2018). Bars drive gas towards the centre due to their non-axisymmetric potential which exerts strong torques on the gas (Shlosman et al. 1989; Peebles & Martini 2006; Cole et al. 2014). Consequently, as this gas accumulates at the centre it triggers the formation of stars, and the stronger the bar the more centrally concentrated the star formation (Athanasoula 1992; Jogee, Scoville & Kenney 2005; Wang et al. 2020).

4.2 Gas properties

In the previous subsection, we saw that the quasar mode feedback reduces the SFR in the central kiloparsec. Here, we explore how the quasar mode affects star forming gas cells that surround the black hole.

Fig. 7 shows the gas temperature as a function of galactocentric distance at $z = 0.05$ (see also Appendix B) colour-coded by the star formation rate of each gas cell (non-star-forming gas cells appear grey). The top, middle, and bottom rows contain results for Au-06, Au-17, and Au-18, respectively. The left-hand, middle, and right-hand columns contain results for the fiducial halo, the NoR, and the NoRNoQ variant, respectively.

In all fiducial haloes and NoR variants there is an almost complete lack of gas cells at the very centre. On the other hand, all NoRNoQ variants not only have central gas cells but in all cases these cells also have the highest star formation rates, and form a characteristic horn-like feature on the gas temperature-distance plane. Furthermore, we see that the inner region ($R < 1$ kpc) of all fiducial haloes and NoR variants is typically populated by very hot ($T > 10^6$ K), non-star-forming gas cells which are not present in the NoRNoQ variants. These two findings show that the quasar mode AGN feedback heats up and expels the gas cells near the centre, thus it is responsible for suppressing the central star formation.

In order to better understand the interplay between the star forming gas cells and the quasar feedback mode, we analyse the evolution of the effective quasar mode energy (i.e. the feedback energy that is able to be absorbed by gas cells.⁸)

Fig. 8 shows the evolution of the ratio (black curve) between the volume occupied by all gas cells and that by the non-star-forming ones inside a sphere with radius r_{BH} ⁹ (red curve). The left-hand, middle, and right-hand columns contain results for Au-06, Au-17, and Au-18, respectively. Each column contains on the top and bottom row the fiducial halo and the NoR variant, respectively. The black and red curves and shaded regions show the median and 16th–84th percentile range, respectively.

We can see that at various times there is a significant fraction of non-star-forming cells within the black hole's vicinity (i.e. within r_{BH}) which allow the quasar mode feedback to be effective. In the

⁸Star forming gas cells follow an effective equation of state (eEoS) which describes a cell's thermodynamical properties by connecting its pressure to its density (Springel & Hernquist 2003). As described in Section 2.1 the AGN feedback in the AURIGA simulations has two modes which both inject energy to gas cells. However, this energy will only be absorbed by cells that cool sufficiently i.e. that are not in the star-forming regime, while cells that are on the eEoS (i.e. have non-zero star forming rates), will instantaneously radiate away any thermal energy injection (Weinberger et al. 2018).

⁹ r_{BH} is the physical radius enclosing the 384 ± 48 nearest gas cells around the black hole. We remind the reader that the quasar mode energy is injected in all cells which are within a sphere with radius r_{BH} .

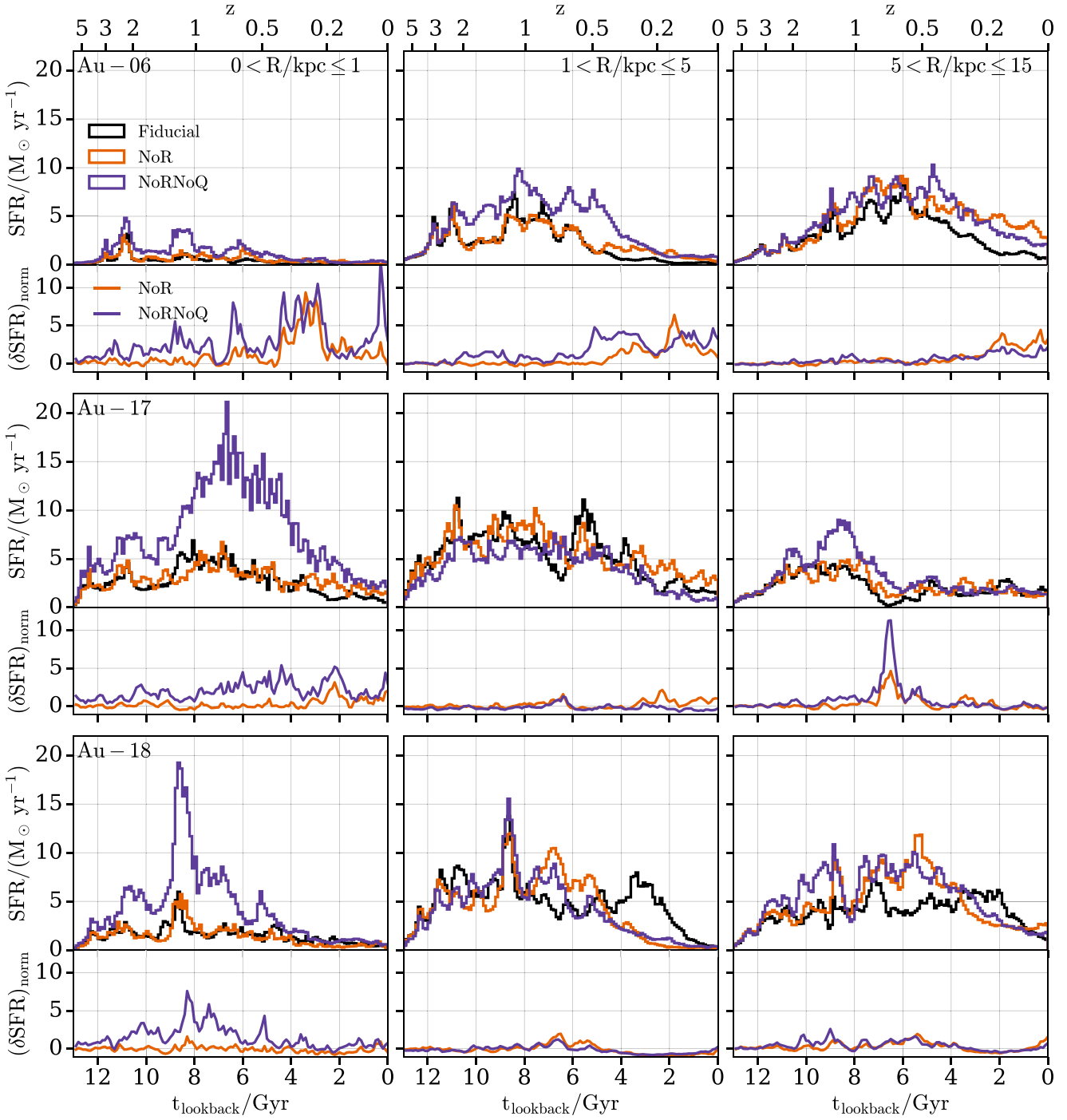


Figure 6. Star formation rate histories along with the normalized SFR difference between a variant and the fiducial halo (see the text for more information). The top, middle, and bottom rows contain results for Au-06, Au-17, and Au-18, respectively. The left-hand, middle, and right-hand columns contain results inside spherical apertures with radii $0 < R/\text{kpc} \leq 1$, $1 < R/\text{kpc} \leq 5$, and $5 < R/\text{kpc} \leq 15$, respectively. Each row contains the star formation rate histories (top panel) and the normalized SFR differences (bottom panel). The black, orange, and purple lines represent the fiducial, the NoR, and the NoRNoQ variant, respectively. The AGN feedback suppresses star formation more in the centre than in the disc.

AURIGA model, black holes eject energy before the cooling is treated and if cooling is inefficient to cool a gas cell down to the eEoS in one time-step, its star-formation rate is set to zero. Hence, the existence of non-star-forming cells indicates that during the next time-step the black hole feedback energy will be absorbed by those cells and not immediately get radiated away. For that reason, the ratio between the volume occupied by all gas cells and that by the non-star-forming

ones can be used as a proxy to estimate the effectiveness of the quasar mode feedback in the AURIGA simulations.

Fig. 9 shows the evolution of the quasar mode feedback energy rate. The left-hand, middle, and right-hand panels contain results for Au-06, Au-17, and Au-18, respectively. The black and orange curves show results for the fiducial halo and the NoR variant, respectively. The dashed curves show the total quasar mode energy as calculated

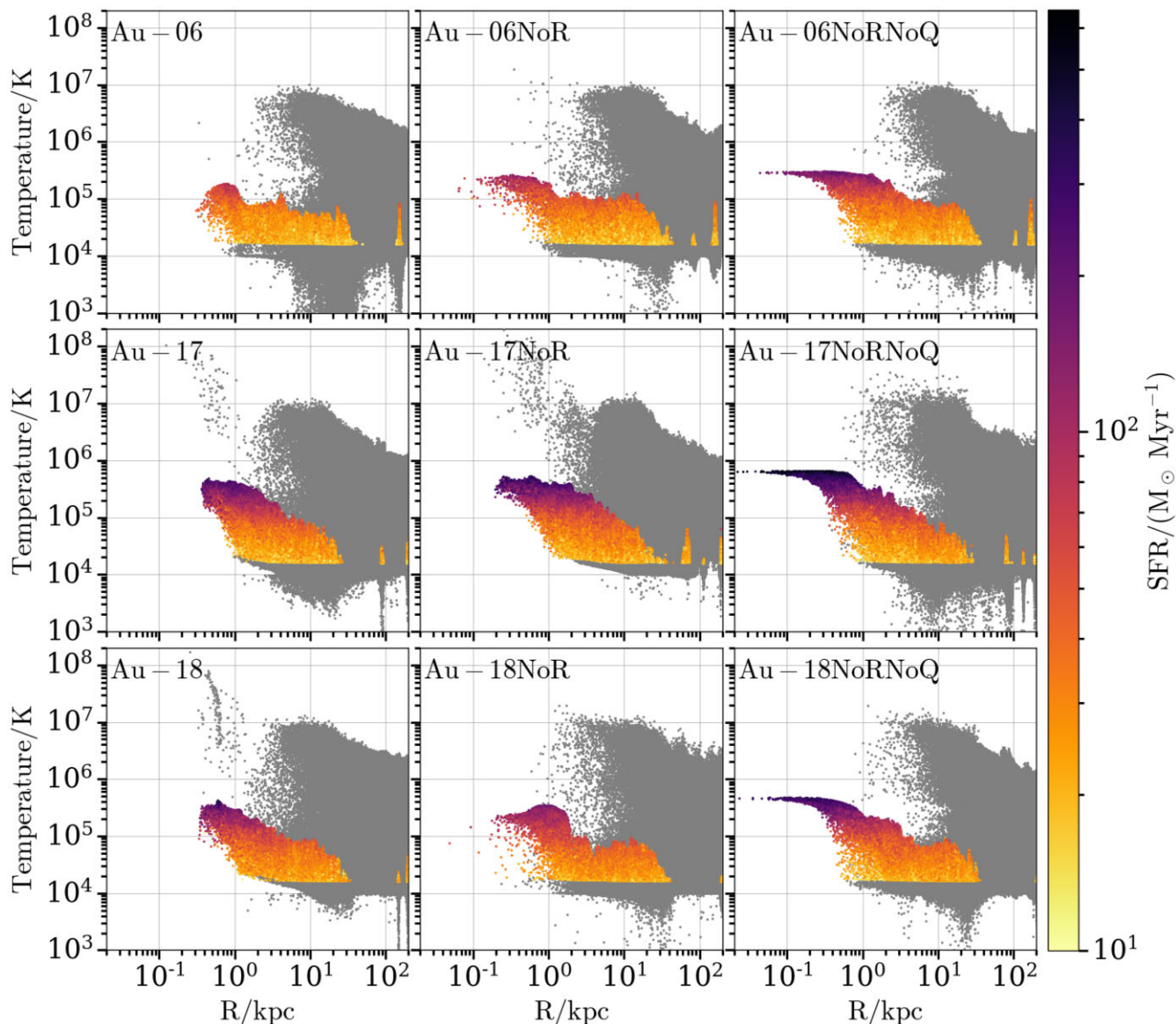


Figure 7. Gas temperature as a function of galactocentric distance at $z = 0.05$ (see also Appendix B) colour-coded by the star formation rate of each gas cell (non-star-forming gas cells appear grey). The top, middle, and bottom rows contain results for Au-06, Au-17, and Au-18, respectively. The left-hand, middle, and right-hand columns contain results for the fiducial halo, the NoR, and the NoRNoQ variant, respectively. The quasar mode AGN feedback expels gas cells and reduces star formation rates in the central regions.

by the model (see Section 2.1 for more details) and the solid curves show the effective quasar mode energy. We define the effective quasar mode energy as the energy which is able to couple to the gas cells, i.e. which is not lost immediately due to radiative cooling by gas cells on the eEoS. We obtain this effective quasar mode energy by multiplying the total quasar mode energy with the volume ratios of non-star forming gas-to-total gas within a sphere with radius r_{BH} , presented in Fig. 8.

For Au-06 the quasar mode energy rate calculated by the model has an almost flat evolution with time while the effective one decreases for $z < 1$ and becomes roughly an order of magnitude lower than the calculated. This trend holds both for the fiducial halo and the NoR variant. On the other hand, Au-17's and Au-18's quasar mode energy rates increase as we go to lower redshifts and are systematically higher than that of their NoR variants. Hence, we see that when the radio mode of our strongly barred galaxies is turned off, the quasar

mode becomes on average less effective because the volume around the black hole is now occupied more by star forming gas cells (see Fig. 8). This indicates that the radio mode has an indirect impact on the gas in the inner disc via influencing the effectiveness of the quasar mode.

In conclusion, we report here that the quasar mode feedback has a significant effect on the gas in the inner regions of MW-mass galaxies. Even though it is not capable of fully quenching our galaxies (as it does for massive ETGs; Martig et al. 2009; Rosito et al. 2019), it has a significant impact on their morphology and dynamics.

5 RADIO MODE EFFECTS

Having presented the effects of the quasar mode feedback on galactic properties, in this section, we explore how the radio mode feedback affects galaxies in the AURIGA simulations. We remind the reader

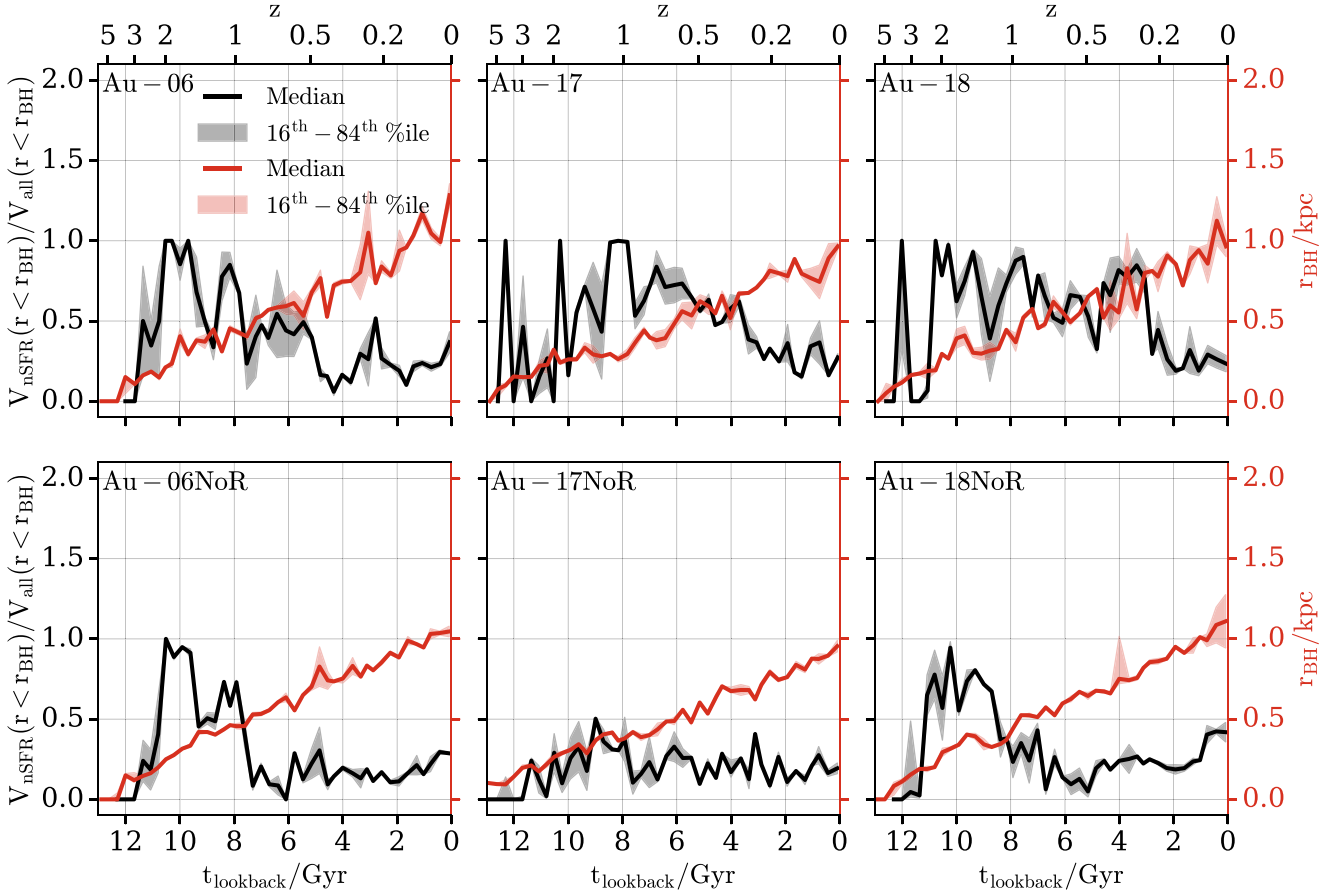


Figure 8. Evolution of the ratio (black curve) between the volume occupied by all gas cells and that by the non-star-forming ones inside a sphere with radius r_{BH} (red curve). The left-hand, middle, and right-hand columns contain results for Au-06, Au-17, and Au-18, respectively. Each column contains on the top and bottom row the fiducial halo and the NoR variant, respectively. The black and red curves and shaded regions show the median and 16th-84th percentile range, respectively. The region around the black hole is populated by more non-star-forming cells when the AGN feedback is present.

that the radio mode feedback in AURIGA is implemented in a way in which it affects the CGM of the galaxy by stochastically inflating bubbles at random locations to heat up the gas.

Fig. 10 shows on the left-hand plot the edge-on projection of the gas temperature for all gas cells inside a $200 \times 200 \times 4$ kpc³ box at $z = 0$. The top, middle, and bottom rows contain results for Au-06, Au-17, and Au-18, respectively. The left-hand, middle, and right-hand columns contain results for the fiducial halo, the NoR, and the NoRNoQ variant, respectively. The right-hand plot shows the volume-weighted (top row) and mass-weighted (bottom row) fractional breakdown of gas into different temperature regimes inside R_{200} . In each stacked bar, the yellow, orange, and red bars represent the fractions of cold ($T < 2 \times 10^4$ K), warm (2×10^4 K $< T < 5 \times 10^5$ K), and hot ($T > 5 \times 10^5$ K) gas, respectively. The height of each bar represents the 1 Gyr time-averaged value of each ratio.

By visually inspecting the left-hand plot we notice that as we move from the fiducial runs to the NoR and NoRNoQ variants the haloes appear to have lower temperatures due to the lack of radio mode AGN feedback. In addition, we see that when we remove the radio mode feedback (i.e. in the NoR variants), the haloes have lower hot gas mass ratios than the fiducial haloes. When we also remove the quasar mode feedback (i.e. in the NoRNoQ variants) the hot gas fraction is further reduced. Furthermore, the NoRNoQ variants have the highest cold gas volume ratios but not necessarily the highest

cold gas mass fractions (see below). These features reflect the effect of the radio mode feedback on the gas and indicate that the lack of AGN produces cooler haloes. As discussed in Section 3.3, this results in more extended stellar discs since as shown in Fig. 6 the gas in the outer disc ($R/\text{kpc} > 1$) is able to cool quicker and form stars more efficiently. Lastly, the unexpected decrease in the cold gas mass fractions in Au-06NoR and the NoRNoQ variants of Au-06 and Au-18 can be explained by the enhanced star formation rates reported in Fig. 6, which result in more frequent star formation feedback that prevents the gas from cooling.

Fig. 11 shows the evolution of the radio mode feedback energy rate. The left-hand, middle, and right-hand panels contain results for Au-06, Au-17, and Au-18, respectively. The black curves show the radio mode energy as calculated by the model (see Section 2.1) and the grey curves show the effective quasar mode energy as presented in Fig. 9.

We see that the evolution of the radio mode feedback energy rate shows similar trends with the evolution of the quasar mode shown in Fig. 9: Au-06 shows a slightly decreasing trend below $z \sim 1$, whilst Au-17's and Au-18's radio mode feedback energy rates increase as we go to lower redshifts. However, the radio mode is – by roughly an order of magnitude – less energetic than the quasar mode.

In summary, as discussed in Section 4.1 and shown in Figs 10 and 11, the radio mode feedback is less powerful and more responsi-

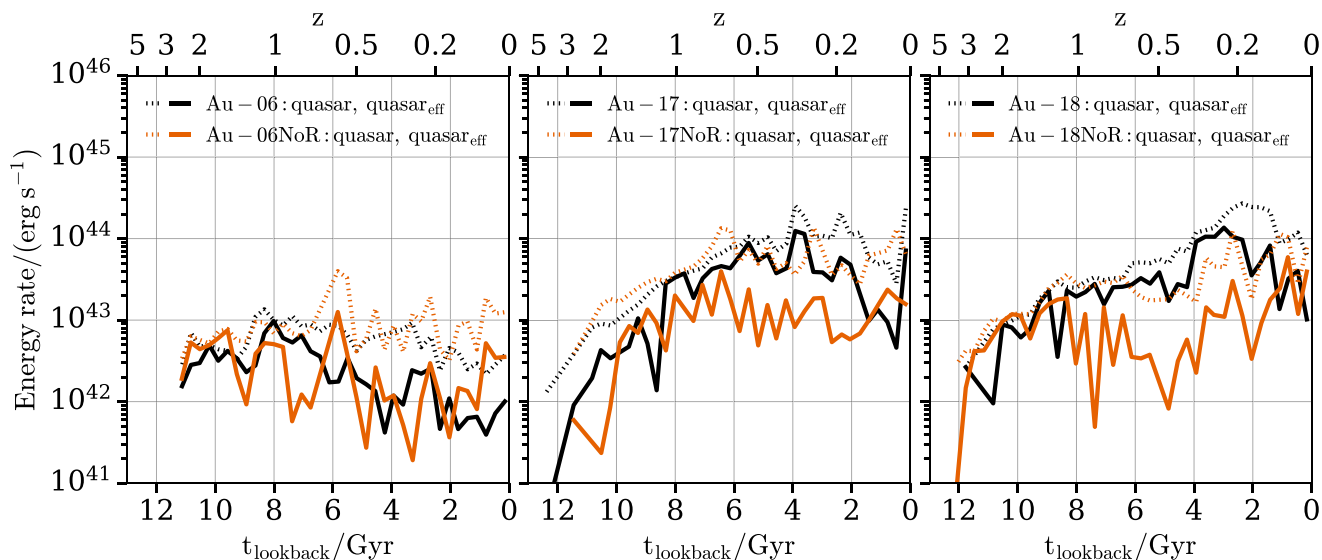


Figure 9. Evolution of the quasar mode feedback energy rate. The left-hand, middle, and right-hand panels contain results for Au-06, Au-17, and Au-18, respectively. The black and orange curves show results for the fiducial halo and the NoR variant, respectively. The dashed curves show the total quasar mode energy as calculated by the model and the solid curves show the effective quasar mode energy (see the text for more information). For our strongly barred galaxies the quasar mode becomes on average less effective when the radio mode is absent.

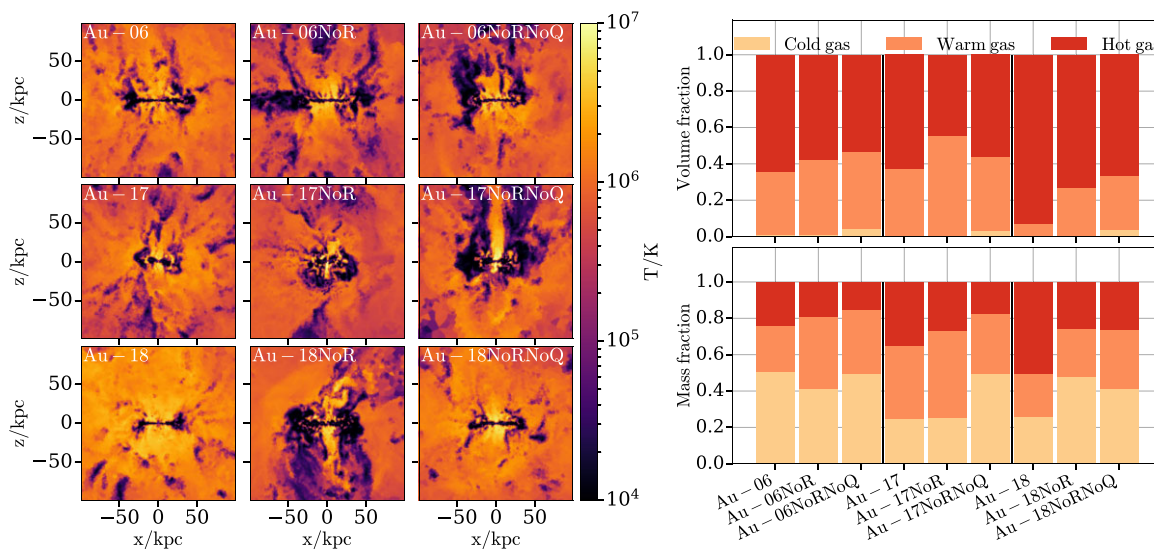


Figure 10. Left-hand plot: Edge-on projection of the gas temperature for all gas cells inside a $200 \times 200 \times 4 \text{ kpc}^3$ box at $z = 0$. The top, middle, and bottom rows contain results for Au-06, Au-17, and Au-18, respectively. The left-hand, middle, and right-hand columns contain results for the fiducial halo, the NoR, and the NoRNoQ variant, respectively. Right-hand plot: Volume-weighted (top row) and mass-weighted (bottom row) fractional breakdown of gas into different temperature regimes inside R_{200} . In each stacked bar, the yellow, orange, and red bars represent the fractions of cold ($T < 2 \times 10^4 \text{ K}$), warm ($2 \times 10^4 \text{ K} < T < 5 \times 10^5 \text{ K}$), and hot ($T > 5 \times 10^5 \text{ K}$) gas, respectively. The height of each bar represents the 1 Gyr time-averaged value of each ratio. The lack of AGN feedback reduces the hot gas mass and volume ratios.

ble for heating up the halo whilst the quasar mode has higher impact and mainly affects the inner regions gas of MW-mass galaxies.

6 DISCUSSION

In this section, we briefly discuss our findings and put them in the context of previous studies.

In Section 3, we showed that the AGN feedback in the AURIGA simulations has a significant effect on the structural and dynamical

properties of MW-mass galaxies. In particular, including the quasar and radio mode AGN feedback leads to weaker and longer bars, that form later, or do not form at all (see Fig. 2). This finding motivated us to explicitly explore in Section 4 and Section 5 how the quasar (i.e. ejective) and radio (i.e. preventive) mode feedback, respectively, affect the formation and properties of the bar, bulge, and disc.

As presented in Fig. 6 and also shown in Grand et al. (2017), the preventive mode does not have a significant effect on the inner galaxy, but rather suppresses star formation in the outer disc. On the other hand, the ejective mode feedback acts to significantly suppress

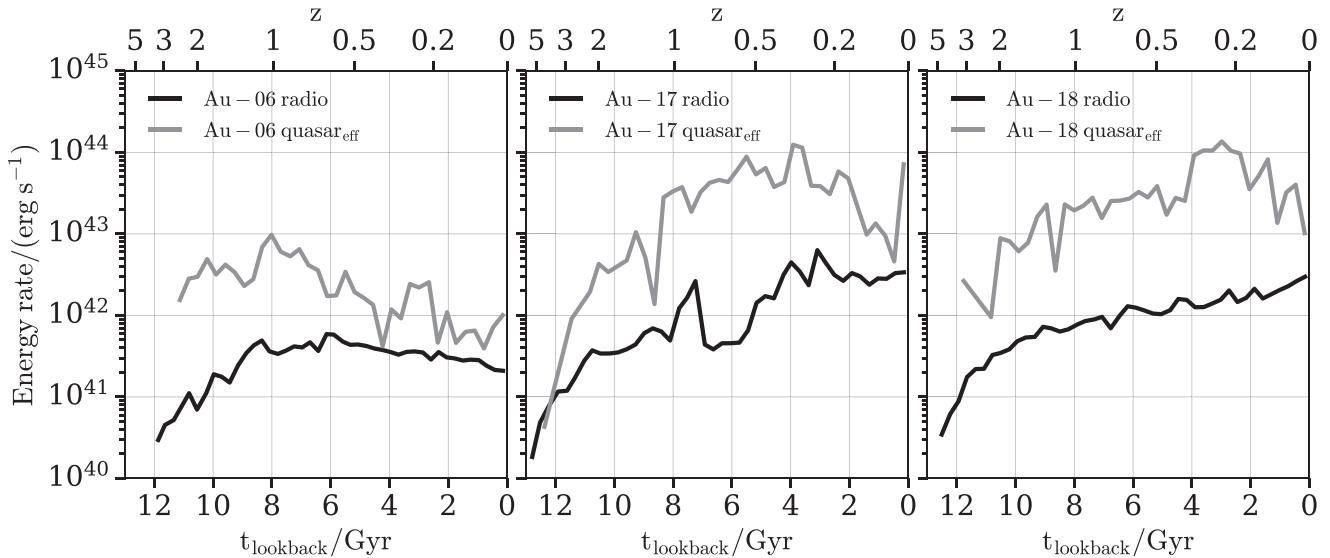


Figure 11. Evolution of the radio mode feedback energy rate. The left-hand, middle, and right-hand panels contain results for Au-06, Au-17, and Au-18, respectively. The black curves show the radio mode energy as calculated by the model (see Section 2.1) and the grey curves show the effective quasar mode energy which corresponds to the black lines shown in Fig. 9. The radio mode feedback is at all times weaker than the quasar mode feedback.

star formation in the central region of the galaxy. Therefore, turning off this mode of feedback leads to galaxies being more baryon-dominated in the inner regions. However, upon carrying out a 2D bar/bulge/disc decomposition we found that this additional mass is in a disc-like rather than a spheroidal component, which results in a more bar-unstable disc in which bars form earlier (see Fig. 2).

6.1 The effects of ejective feedback on the dynamical stability of galaxies

A previous study that explored the bar-AGN connection (Bonoli et al. 2016) found that the addition of AGN feedback in the ERIS simulation (i.e. ERISBH) promotes the development of a bar, since it suppresses the formation of a massive spheroidal bulge at the centre. However, the conclusions we drew in Section 3.3 on the basis of Fig. 5, Table 1, and Table 2 indicate that in the AURIGA simulations the removal of AGN feedback results in low Sérsic index components at the centre, which do not represent a classical bulge-like population (see also Appendix C). As shown in Fig. 7, the lack of AGN feedback allows for gas cells – which appear to be able to maintain some angular momentum – to survive in the central regions and settle in a discy component.

Given that the dominant feedback mode in the central region is the quasar mode (see Section 2 for a description) and that this mode has been implemented in a similar way (Di Matteo, Springel & Hernquist 2005; Springel et al. 2005) both in the AURIGA and the ERISBH simulations, one would expect to find similar effects of AGN feedback on the formation and properties of bars. However, as described above, we find different results in the two studies, which may be due to a number of different factors. This could include aspects such as different merger histories of the galaxies under study (e.g. a more violent merger history for the ERISBH galaxy), the different hydrodynamical schemes employed in the simulations (Scannapieco et al. 2012; Roca-Fàbrega et al. 2021) or more complex aspects of the physics (subgrid) modelling employed in the simulation, such as the star formation and feedback (e.g. Zana et al. 2019, discussed the importance of the feedback employed in the

simulations on the dynamical properties of barred galaxies). Further work would be needed to identify the exact reasons.

6.2 A complex feedback cycle involving bars and black holes

As briefly discussed in Section 4.1, non-linear interactions between bar-driven gas flows, star formation, and AGN feedback occur in barred galaxies. The non-axisymmetric potential generated by a bar exerts torques on the gas (Shlosman et al. 1989) which flows towards the centre, intensifies central star formation (see Fig. 6), and also accretes on to the black hole. The latter phenomenon will trigger AGN feedback which will heat up and expel the neighbouring gas cells (see Fig. 7) and, according to our findings, would subsequently weaken the bar (see Fig. 2). Therefore, it becomes apparent that there is a non-trivial feedback cycle which involves bar properties, gas inflows, and AGN activity: as the bar pushes gas to the centre it triggers AGN feedback which could result in weaker bars and consequently less bar-driven gas inflows. Hence, the impact of AGN feedback on the bar-related gas flows via the formation of a weaker bar can be considered as an additional, indirect AGN feedback mechanism which we intend to study in more detail in a future work.

Furthermore, whilst in this work we showed that galaxies with and without radio mode feedback form their bars at different times (i.e. AGN feedback affects the dynamical properties of MW-like galaxies), Fig. 3 revealed that different variants end up in similar regions on the black hole mass–stellar mass plane at $z = 0$. This is an important result if we consider that the black hole mass–stellar mass relation is frequently used when calibrating the free parameters of subgrid models – especially the efficiency of the black hole accretion/feedback model – in large scale cosmological simulations (e.g. Schaye et al. 2015; Volonteri et al. 2016; Pillepich et al. 2018; Davé et al. 2019; Habouzit et al. 2021). Therefore, we argue that besides fundamental properties like the size, mass, and star formation rate of galaxies; structural parameters, such as the formation time and properties of bars, contain valuable information which can provide additional constraints when calibrating the efficiency of AGN feedback models, since the morphology of MW-mass galaxies can

be highly affected by the choice of parameters and modes of AGN feedback (i.e. ejective or preventive).

6.3 The fate of unbarred galaxies that lack AGN feedback

This work mainly focused on the effects of AGN feedback on two strongly (Au-17 and Au-18) and one very weakly barred galaxy (Au-06), which can be considered an unbarred galaxy by some bar-strength classification methods. For Au-06 we showed that when we removed its AGN feedback a strong, well-developed bar formed and we could clearly call Au-06NoRNoQ a strongly barred galaxy (see Fig. 2).

A few questions that naturally arise are: Was Au-06 a special case? Would all very weakly barred/unbarred galaxies behave the same? If not, what are the factors that will dictate the fate of unbarred galaxies that lack AGN feedback? Our study showed that when we remove the AGN feedback our galaxies become more baryon-dominated and consequently more bar-unstable, and indeed as Au-06 demonstrated, a weakly barred/unbarred galaxy can become strongly barred. However, whether or not an unbarred galaxy that lacks AGN feedback will form a bar strongly depends on how close that galaxy is to bar instability to begin with, which we cannot reliably assess in advance (e.g. Athanassoula 2008). Thus, in order to be able to generalize our results to all unbarred galaxies we need to investigate in a systematic way the effects of AGN feedback on unbarred galaxies. Fully exploring this parameter space is beyond the scope of this paper but we intend to further investigate the effects of AGN feedback on all AURIGA galaxies in a future study.

7 CONCLUSIONS

In this work, we study the impact of the radio (i.e. preventive) and quasar (i.e. ejective) AGN feedback modes on the structural and dynamical properties of barred galaxies. More explicitly, we assess to what extent the AURIGA AGN implementation affects the properties of the bar/bulge/disc, and consequently of the galaxy as a whole. For that purpose, we selected three AURIGA galaxies – two strongly and one very weakly barred – and re-simulated each one with two different AGN feedback setups: one with no radio mode feedback (NoR) and one with neither the radio mode nor the quasar mode (NoRNoQ). Our main conclusions are as follows:

(i) Different stellar patterns (e.g. bars and boxy/peanut bulges) emerge in the central regions of galaxies with different AGN feedback modes (see Fig. 1). Hence, we find that the AGN feedback in AURIGA simulations is able to shape the morphology and affect the structural properties of MW-mass galaxies. This is in contrast to some previous studies which considered AGN feedback to have negligible effect on MW-mass haloes, and thus excluded it from their subgrid models.

(ii) While the radio mode feedback does not directly influence the formation and the properties of the bar (it does indirectly by altering the effectiveness of the quasar mode, see Fig. 9), the quasar mode can have a significant impact on the structural and dynamical properties of barred AURIGA galaxies. We find that the NoRNoQ variants develop stronger bars (i.e. $A_2 > 0.3$) which form earlier than the bars of the fiducial haloes and the NoR variants (see Fig. 2).

(iii) For all galaxies the stellar masses increase as we move from the fiducial haloes to the NoR and NoRNoQ variants (see Fig. 4). This results from the enhanced star formation rates – especially in the centre – due to the reduced AGN feedback (see Fig. 6).

(iv) While there is an increase of mass concentration in the centre of the NoR and NoRNoQ variants (see Fig. 5), this is not found to be

in a high Sérsic classical-bulge like component. This result suggests that gas cells which survive and/or accrete in the central regions (due to the lack of the AGN feedback) are able to maintain some angular momentum and settle in a disc component.

(v) We find that the quasar and radio mode feedback affect galaxies in the AURIGA simulations in different ways. The quasar mode feedback mostly influences star formation in the central kiloparsec (see Fig. 6), by heating up and expelling the gas within the central regions of the galaxy (see Fig. 7), i.e. within a sphere with radius r_{BH} . Even though most of the gas within that sphere is on the effective equation of state – and thus able to radiate away the energy injected by the quasar mode of the AGN – there is a non-negligible fraction of gas cells which are able to couple to the quasar mode feedback (see Figs 8 and 9).

(vi) The radio mode feedback mostly affects the ability of gas in the halo to cool (see Fig. 10). Therefore, the radio mode has most of its effect on star formation in the outer parts of the galaxy at late times (see Fig. 6) and in general leads to galaxies with more extended discs (see Figs 1 and 5).

We conclude that AGN feedback can regulate the structural and dynamical galactic properties both directly (by suppressing central star formation) and indirectly (by heating up the halo), and differently affects strongly and weakly barred galaxies. Hence, the way AGN feedback is implemented can play a fundamental role in the properties and morphology of MW-mass galaxies. In addition, we propose that observational studies of the morphology of MW-mass galaxies along with the detailed analysis of their bars can be used as method to quantify the efficiency of ejective AGN feedback.

ACKNOWLEDGEMENTS

The authors would like to thank the anonymous referee for their useful comments which contributed to improve this work. DI would like to acknowledge his family members for their financial support and the European Research Council (ERC) via ERC Consolidator Grant KETJU (no. 818930). In addition, he gratefully acknowledges the hospitality of the Max Planck Institute for Astrophysics in Garching, Germany, during part of this work, and thanks Jessica May Hislop for valuable discussions. RG acknowledges financial support from the Spanish Ministry of Science and Innovation (MICINN) through the Spanish State Research Agency, under the Severo Ochoa Program 2020-2023 (CEX2019-000920-S). FAG acknowledges financial support from FONDECYT Regular 1211370 and from the Max Planck Society through a Partner Group grant. FAG gratefully acknowledges support by the ANID BASAL project FB210003. FM acknowledges support through the program ‘Rita Levi Montalcini’ of the Italian MUR.

This work used the DiRAC@Durham facility managed by the Institute for Computational Cosmology on behalf of the Science and Technology Facilities Council (STFC) DiRAC HPC Facility (www.dirac.ac.uk). The equipment was funded by BEIS capital funding via STFC capital grants ST/K00042X/1, ST/P002293/1, ST/R002371/1, and ST/S002502/1, Durham University and STFC operations grant ST/R000832/1. DiRAC is part of the National e-Infrastructure.

We thank the developers of ASTROPY (Astropy Collaboration 2013, 2018), MATPLOTLIB (Hunter 2007), NUMPY (van der Walt, Colbert & Varoquaux 2011), and SCIPY (Virtanen et al. 2020).

Part of this work was carried out during the COVID-19 pandemic and would not have been possible without the tireless efforts of the essential workers, who did not have the safety of working from their homes.

DATA AVAILABILITY

The data underlying this article will be shared on reasonable request to the corresponding author.

REFERENCES

- Aguerri J. A. L., 1999, *A&A*, 351, 43
 Aguerri J. A. L., Méndez-Abreu J., Corsini E. M., 2009, *A&A*, 495, 491
 Algorry D. G. et al., 2017, *MNRAS*, 469, 1054
 Astropy Collaboration, 2013, *A&A*, 558, A33
 Astropy Collaboration, 2018, *AJ*, 156, 123
 Athanassoula E., 1992, *MNRAS*, 259, 345
 Athanassoula E., 2003, *MNRAS*, 341, 1179
 Athanassoula E., 2004, in Ryder S., Pisano D., Walker M., Freeman K., eds, *Proc. IAU Symp. 220, Dark Matter in Galaxies*. Astron. Soc. Pac., San Francisco, p. 255
 Athanassoula E., 2008, *MNRAS*, 390, L69
 Athanassoula E., 2013, in Falcón-Barroso J., Knapen J. H., eds, *Bars and Secular Evolution in Disk Galaxies: Theoretical Input*. Cambridge Univ. Press, Cambridge, p. 305
 Athanassoula E., Martinet L., 1980, *A&A*, 87, L10
 Athanassoula E., Misiriotis A., 2002, *MNRAS*, 330, 35
 Athanassoula E., Morin S., Wozniak H., Puy D., Pierce M. J., Lombard J., Bosma A., 1990, *MNRAS*, 245, 130
 Athanassoula E., Machado R. E. G., Rodionov S. A., 2013, *MNRAS*, 429, 1949
 Begelman M. C., 2004, in Ho L. C., ed., *Coevolution of Black Holes and Galaxies*. Cambridge Univ. Press, Cambridge, p. 374
 Behroozi P. S., Conroy C., Wechsler R. H., 2010, *ApJ*, 717, 379
 Blázquez-Calero G. et al., 2020, *MNRAS*, 491, 1800
 Bondi H., 1952, *MNRAS*, 112, 195
 Bondi H., Hoyle F., 1944, *MNRAS*, 104, 273
 Bonoli S., Mayer L., Kazantzidis S., Madau P., Bellovary J., Governato F., 2016, *MNRAS*, 459, 2603
 Bradley L. et al., 2019, *astropy/photutils: v0.6*.
 Bureau M., Aronica G., Athanassoula E., Dettmar R.-J., Bosma A., Freeman K. C., 2006, *MNRAS*, 370, 753
 Buta R. J. et al., 2015, *ApJS*, 217, 32
 Ciotti L., Bertin G., 1999, *A&A*, 352, 447
 Cole D. R., Debattista V. P., Erwin P., Earp S. W. F., Roškar R., 2014, *MNRAS*, 445, 3352
 Colín P., Avila-Reese V., Roca-Fàbrega S., Valenzuela O., 2016, *ApJ*, 829, 98
 Combes F., Sanders R. H., 1981, *A&A*, 96, 164
 Combes F., Debbasch F., Friedli D., Pfenniger D., 1990, *A&A*, 233, 82
 Costa T., Rosdahl J., Sijacki D., Haehnelt M. G., 2018, *MNRAS*, 479, 2079
 Costa T., Pakmor R., Springel V., 2020, *MNRAS*, 497, 5229
 Davé R., Anglés-Alcázar D., Narayanan D., Li Q., Rafieferantsoa M. H., Appleby S., 2019, *MNRAS*, 486, 2827
 Davis B. L., Graham A. W., Cameron E., 2018, *ApJ*, 869, 113
 Dekel A., Birnboim Y., 2006, *MNRAS*, 368, 2
 Di Matteo T., Springel V., Hernquist L., 2005, *Nature*, 433, 604
 Dubois Y., Peirani S., Pichon C., Devriendt J., Gavazzi R., Welker C., Volonteri M., 2016, *MNRAS*, 463, 3948
 Efstathiou G., Lake G., Negroponte J., 1982, *MNRAS*, 199, 1069
 Elmegreen B. G., Elmegreen D. M., 1985, *ApJ*, 288, 438
 Emsellem E. et al., 2007, *MNRAS*, 379, 401
 Erwin P., 2005, *MNRAS*, 364, 283
 Erwin P., 2015, *ApJ*, 799, 226
 Erwin P., 2018, *MNRAS*, 474, 5372
 Eskridge P. B. et al., 2000, *AJ*, 119, 536
 Fabian A. C., 2012, *ARA&A*, 50, 455
 Fanali R., Dotti M., Fiacconi D., Haardt F., 2015, *MNRAS*, 454, 3641
 Faucher-Giguère C.-A., Lidz A., Zaldarriaga M., Hernquist L., 2009, *ApJ*, 703, 1416
 Fragkoudi F., Athanassoula E., Bosma A., 2016, *MNRAS*, 462, L41
 Fragkoudi F. et al., 2020, *MNRAS*, 494, 5936
 Fragkoudi F., Grand R. J. J., Pakmor R., Springel V., White S. D. M., Marinacci F., Gomez F. A., Navarro J. F., 2021, *A&A*, 650, L16
 Frigo M., Naab T., Hirschmann M., Choi E., Somerville R. S., Krajinovic D., Davé R., Cappellari M., 2019, *MNRAS*, 489, 2702
 Gabor J. M., Bournaud F., 2014, *MNRAS*, 441, 1615
 Gadotti D. A., 2011, *MNRAS*, 415, 3308
 Gargiulo I. D. et al., 2019, *MNRAS*, 489, 5742
 Gavazzi G. et al., 2015, *A&A*, 580, A116
 Goulding A. D. et al., 2017, *ApJ*, 843, 135
 Grand R. J. J. et al., 2017, *MNRAS*, 467, 179
 Grand R. J. J. et al., 2019, *MNRAS*, 490, 4786
 Grand R. J. J. et al., 2020, *MNRAS*, 497, 1603
 Guo Q., White S., Li C., Boylan-Kolchin M., 2010, *MNRAS*, 404, 1111
 Habouzit M. et al., 2021, *MNRAS*, 503, 1940
 Hani M. H., Ellison S. L., Sparre M., Grand R. J. J., Pakmor R., Gomez F. A., Springel V., 2019, *MNRAS*, 488, 135
 Hilmi T. et al., 2020, *MNRAS*, 497, 933
 Hohl F., 1971, *ApJ*, 168, 343
 Hoyle F., Lyttleton R. A., 1939, *Proc. Camb. Phil. Soc.*, 35, 405
 Hunter J. D., 2007, *Comput. Sci. Eng.*, 9, 90
 Irodotou D., Thomas P. A., Henriques B. M., Sargent M. T., Hislop J. M., 2019, *MNRAS*, 489, 3609
 Jogee S., Scoville N., Kenney J. D. P., 2005, *ApJ*, 630, 837
 Kataria S. K., Das M., 2019, *ApJ*, 886, 43
 Khoperskov S., Haywood M., Di Matteo P., Lehnert M. D., Combes F., 2018, *A&A*, 609, A60
 Kim T., Gadotti D. A., Athanassoula E., Bosma A., Sheth K., Lee M. G., 2016, *MNRAS*, 462, 3430
 Kim W.-T., Seo W.-Y., Kim Y., 2012, *ApJ*, 758, 14
 Knapen J. H., 2010, in Block D. L., Freeman K. C., Puerari I., eds, *Galaxies and their Masks*. Springer, Berlin, p. 201
 Kormendy J., 2013, in Falcón-Barroso J., Knapen J. H., eds, *Secular Evolution in Disk Galaxies*. p. 1
 Kormendy J., Kennicutt, Robert C. J., 2004, *ARA&A*, 42, 603
 Laurikainen E., Salo H., 2016, in Laurikainen E., Peletier R., Gadotti D., eds, *Observed Properties of Boxy/Peanut/Barlens Bulges*. Springer, Cham, p. 77
 Laurikainen E., Salo H., 2017, *A&A*, 598, A10
 Laurikainen E., Salo H., Rautiainen P., 2002, *MNRAS*, 331, 880
 Lokas E. L., Athanassoula E., Debattista V. P., Valluri M., Pino A. d., Semiczuk M., Gajda G., Kowalczyk K., 2014, *MNRAS*, 445, 1339
 Lynden-Bell D., 1969, *Nature*, 223, 690
 MacArthur L. A., Courteau S., Holtzman J. A., 2003, *ApJ*, 582, 689
 Marinacci F., Pakmor R., Springel V., 2014, *MNRAS*, 437, 1750
 Martig M., Bournaud F., Teyssier R., Dekel A., 2009, *ApJ*, 707, 250
 Martin P., 1995, *AJ*, 109, 2428
 Martinez-Valpuesta I., Shlosman I., Heller C., 2006, *ApJ*, 637, 214
 McNamara B. R., Nulsen P. E. J., 2012, *New J. Phys.*, 14, 055023
 Merritt D., Sellwood J. A., 1994, *ApJ*, 425, 551
 Mihos J. C., Walker I. R., Hernquist L., Mendes de Oliveira C., Bolte M., 1995, *ApJ*, 447, L87
 Mo H. J., Mao S., White S. D. M., 1998, *MNRAS*, 295, 319
 Moster B. P., Somerville R. S., Maulbetsch C., van den Bosch F. C., Macciò A. V., Naab T., Oser L., 2010, *ApJ*, 710, 903
 Moster B. P., Naab T., White S. D. M., 2013, *MNRAS*, 428, 3121
 Nair P. B., Abraham R. G., 2010, *ApJ*, 714, L260
 Noguchi M., 1996, *ApJ*, 469, 605
 Nulsen P. E. J., Fabian A. C., 2000, *MNRAS*, 311, 346
 Ostriker J. P., Peebles P. J. E., 1973, *ApJ*, 186, 467
 Pakmor R., Springel V., 2013, *MNRAS*, 432, 176
 Pakmor R., Bauer A., Springel V., 2011, *MNRAS*, 418, 1392
 Pakmor R., Marinacci F., Springel V., 2014, *ApJ*, 783, L20
 Pakmor R., Springel V., Bauer A., Mocz P., Muñoz D. J., Ohlmann S. T., Schaal K., Zhu C., 2016, *MNRAS*, 455, 1134
 Pakmor R. et al., 2017, *MNRAS*, 469, 3185
 Pakmor R., Guillet T., Pfrommer C., Gómez F. A., Grand R. J. J., Marinacci F., Simpson C. M., Springel V., 2018, *MNRAS*, 481, 4410
 Parul H. D., Smirnov A. A., Sotnikova N. Y., 2020, *ApJ*, 895, 12

Peebles M. S., Martini P., 2006, *ApJ*, 652, 1097
 Penoyre Z., Moster B. P., Sijacki D., Genel S., 2017, *MNRAS*, 468, 3883
 Peschken N., Lokas E. L., 2019, *MNRAS*, 483, 2721
 Pfnegger D., Friedli D., 1991, *A&A*, 252, 75
 Pillepich A. et al., 2018, *MNRAS*, 473, 4077
 Planck Collaboration XVI, 2014, *A&A*, 571, A16
 Pratt G. W., Croston J. H., Arnaud M., Böhringer H., 2009, *A&A*, 498, 361
 Quillen A. C., 2002, *AJ*, 124, 722
 Quillen A. C., Minchev I., Sharma S., Qin Y.-J., Di Matteo P., 2014, *MNRAS*, 437, 1284
 Rafferty D. A., McNamara B. R., Nulsen P. E. J., Wise M. W., 2006, *ApJ*, 652, 216
 Raha N., Sellwood J. A., James R. A., Kahn F. D., 1991, *Nature*, 352, 411
 Reddish J. et al., 2022, *MNRAS*, 512, 160
 Roca-Fàbrega S., Valenzuela O., Colín P., Figueras F., Krongold Y., Velázquez H., Avila-Reese V., Ibarra-Medel H., 2016, *ApJ*, 824, 94
 Roca-Fàbrega S. et al., 2021, *ApJ*, 917, 64
 Rosas-Guevara Y. et al., 2020, *MNRAS*, 491, 2547
 Rosas-Guevara Y. et al., 2022, *MNRAS*, 512, 5339
 Rosito M. S., Tissera P. B., Pedrosa S. E., Rosas-Guevara Y., 2019, *A&A*, 629, A37
 Saha K., Martinez-Valpuesta I., Gerhard O., 2012, *MNRAS*, 421, 333
 Sahu N., Graham A. W., Davis B. L., 2019, *ApJ*, 876, 155
 Scannapieco C. et al., 2012, *MNRAS*, 423, 1726
 Schaye J. et al., 2015, *MNRAS*, 446, 521
 Sellwood J. A., Moore E. M., 1999, *ApJ*, 510, 125
 Shlosman I., Frank J., Begelman M. C., 1989, *Nature*, 338, 45
 Shlosman I., Begelman M. C., Frank J., 1990, *Nature*, 345, 679
 Sijacki D., Springel V., Di Matteo T., Hernquist L., 2007, *MNRAS*, 380, 877
 Silk J., Rees M. J., 1998, *A&A*, 331, L1
 Spinoso D., Bonoli S., Dotti M., Mayer L., Madau P., Bellovary J., 2017, *MNRAS*, 465, 3729
 Springel V., 2010, *MNRAS*, 401, 791
 Springel V., Hernquist L., 2003, *MNRAS*, 339, 289
 Springel V., Di Matteo T., Hernquist L., 2005, *MNRAS*, 361, 776
 Springel V. et al., 2008, *MNRAS*, 391, 1685
 Su K.-Y. et al., 2021, *MNRAS*, 507, 175
 Valentini M. et al., 2020, *MNRAS*, 491, 2779
 van der Walt S., Colbert S. C., Varoquaux G., 2011, *Comput. Sci. Eng.*, 13, 22
 Virtanen P. et al., 2020, *Nat. Methods*, 17, 261
 Vogelsberger M., Genel S., Sijacki D., Torrey P., Springel V., Hernquist L., 2013, *MNRAS*, 436, 3031
 Volonteri M., Dubois Y., Pichon C., Devriendt J., 2016, *MNRAS*, 460, 2979
 Wang J., Athanassoula E., Yu S.-Y., Wolf C., Shao L., Gao H., Randriamampandry T. H., 2020, *ApJ*, 893, 19
 Weinberger R. et al., 2018, *MNRAS*, 479, 4056
 Weinberger R., Springel V., Pakmor R., 2020, *ApJS*, 248, 32
 Whitmore B. C., Bell M., 1988, *ApJ*, 324, 741
 Yurin D., Springel V., 2015, *MNRAS*, 452, 2367
 Zana T., Capelo P. R., Dotti M., Mayer L., Lupi A., Haardt F., Bonoli S., Shen S., 2019, *MNRAS*, 488, 1864
 Zhu Q., Li Y., 2016, *ApJ*, 831, 52
 Zinger E. et al., 2020, *MNRAS*, 499, 768

APPENDIX A: 2D DECOMPOSITIONS

The fitting process begins by producing face-on images for each halo and gaining a first insight into each galaxy’s parameters. We do that as follows:

(i) We rotate all stellar particles such that the bar is along the horizontal axis.

(ii) We create face-on grey-scaled r -band images.

(iii) We use a Gaussian filter with $\text{FWHM} = 2$ to blur the images, in order to appropriately simulate the effects of seeing in real observations.

(iv) We use PHOTUTILS (Bradley et al. 2019) to perform isophotal ellipse fitting to the images and estimate the intensity, length, and ellipticity of the bar (I_0 , a_{bar} , ell), bulge (I_e , r_e , ell), and disc (I_0 , h , ell) which we provide to IMFIT as an initial set of parameters for the corresponding profiles.

Figs A1, A2, and A3 contain 2D bar/bulge/disc fits for Au-06, Au-17, and Au-18, respectively. In each figure the top, middle, and bottom plot show the fiducial halo, the NoR, and the NoRNoQ variant, respectively. In each plot the top four panels show from left to right the r -band image, model, input/model, and residual produced by IMFIT. The bottom four panels show from left to right the ellipticity, position angle, pixel density, and intensity of the r -band image (black) and model (red) as a function of the semimajor axis.

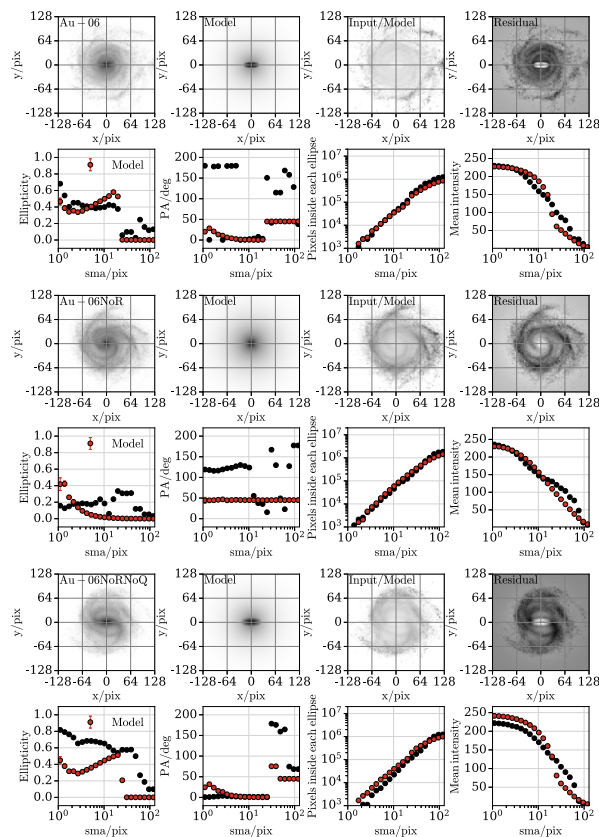


Figure A1. 2D bar/bulge/disc decomposition for Au-06 and its variants. The top, middle, and bottom plot show the fiducial halo, the NoR, and the NoRNoQ variant, respectively. In each plot the top four panels show from left to right the r -band image, model, input/model, and residual produced by IMFIT. The bottom four panels show from left to right the ellipticity, position angle, pixel density, and intensity of the r -band image (black) and model (red) as a function of the semimajor axis.

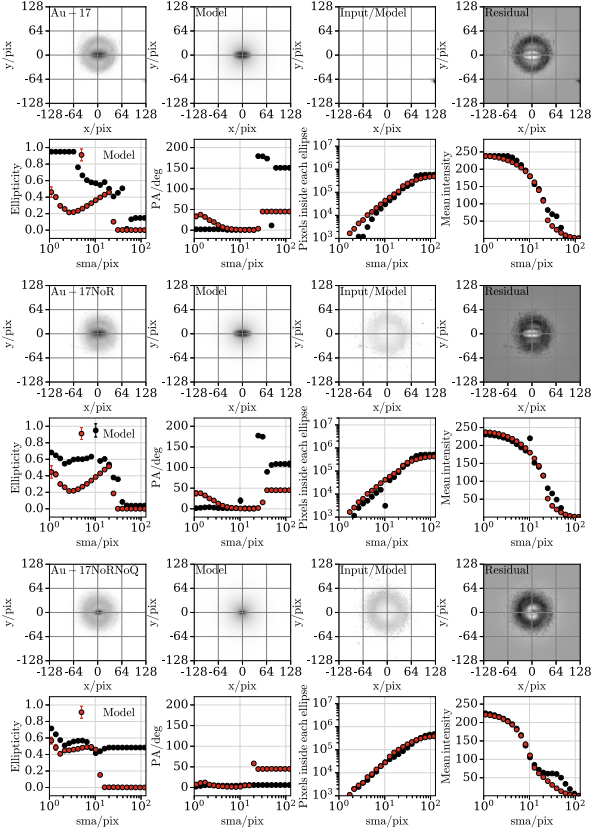


Figure A2. Same as Fig. A1 but for Au-17 and its variants.

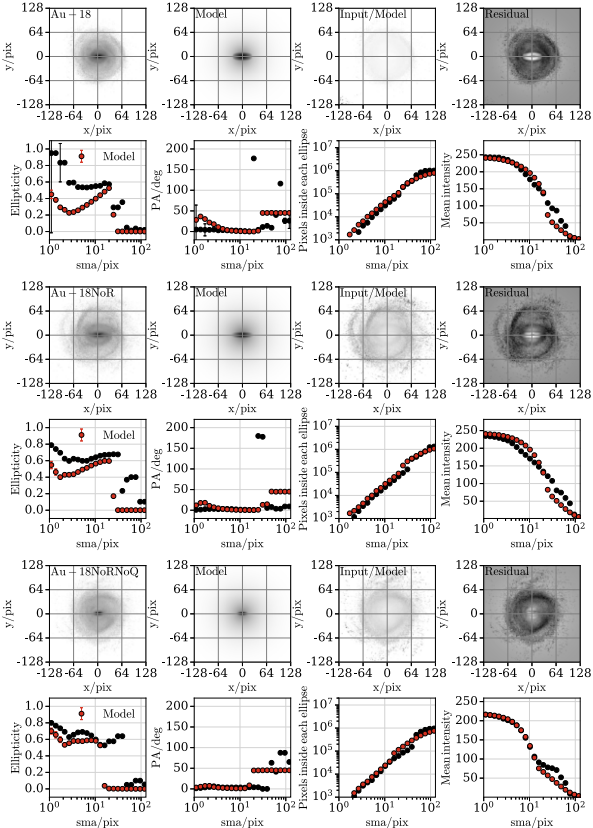


Figure A3. Same as Fig. A1 but for Au-18 and its variants.

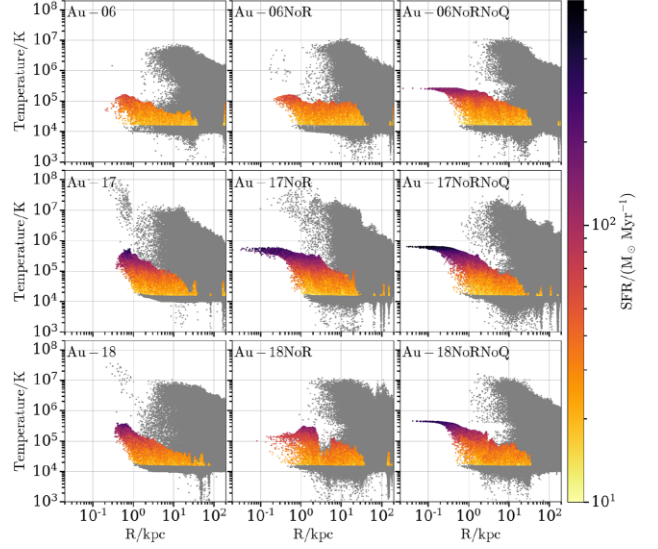


Figure B1. Same as Fig. 7 but at $z = 0.00$.

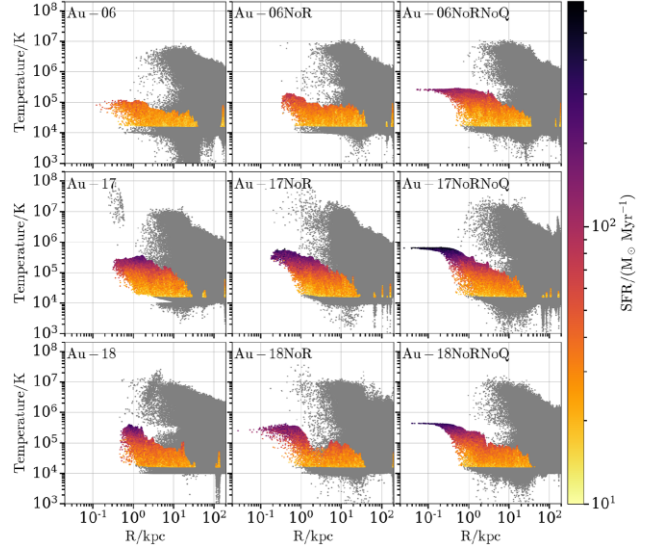


Figure B2. Same as Fig. 7 but at $z = 0.02$.

APPENDIX B: EVOLUTION OF THE GAS TEMPERATURE–DISTANCE RELATION

In Figs B1 and B2 we reproduce Fig. 7 for $z = 0.00$ and $z = 0.02$, respectively, to show that even though in all three plots the horn-like features discussed in Section 4.2 consistently appear in all NoRNoQ variants; at $z = 0.00$ Au-17NoR also shows the same feature (i.e. has gas cells on the eEoS). This behaviour shows that despite the fact that its quasar mode is on, it is not ejecting energy in this specific snapshot so star forming gas cells exist in the centre as they do in all NoRNoQ variants.

APPENDIX C: STELLAR SURFACE DENSITY PROFILES

Table C1 shows the fitting parameters of the process described in Section 3.3 but instead of $z = 0$ (see Table 1), here we decompose every version of a halo (i.e. the fiducial halo, the NoR, and the

Table C1. Similar to Table 1 but instead of $z = 0$ the fitting was performed at the time the NoRNoQ variant of each halo formed a bar. The rows represent (1) model names (three fiducial runs, namely Au-06, Au-17, and Au-18, plus a no-radio and a no-radio-no-quasar variant for each one); (2) lookback time at which the decomposition was performed; (4) Sérsic index; (5) effective radius; (6) inferred Sérsic mass; (8) scale length; (9) inferred disc mass; (10) disc-to-total stellar mass ratio.

	Au-06	Au-06NoR	Au-06NoRNoQ	Au-17	Au-17NoR	Au-17NoRNoQ	Au-18	Au-18NoR	Au-18NoRNoQ
$t_{\text{lookback}} / \text{Gyr}$	3.98	3.98	3.98	10.46	10.46	10.46	8.89	8.89	8.89
Sérsic									
n	0.78	0.85	0.91	1.49	0.40	0.39	0.10	0.54	0.33
$R_{\text{eff}} / \text{kpc}$	1.02	0.66	0.72	2.16	0.41	0.38	0.73	0.55	0.36
$M_{\text{Sérsic}} / (10^{10} M_{\odot})$	0.50	0.42	0.84	0.05	0.02	0.09	0.03	0.15	0.24
Exponential									
h / kpc	3.84	3.96	3.06	1.73	2.01	1.86	1.91	2.29	1.92
$M_{\text{d}} / (10^{10} M_{\odot})$	3.72	4.34	5.92	1.49	1.56	1.70	2.56	2.23	3.21
D/T	0.88	0.91	0.88	0.97	0.99	0.95	0.99	0.94	0.93

NoRNoQ variant) at the earliest time one of the versions formed a bar. Since as we showed in Fig. 2 the NoRNoQ variants form bars earlier than their fiducial haloes and NoR variants, in practice we decompose every version of a particular halo at the time the NoRNoQ variant of that halo formed a bar. This allows us to investigate (i) why do the NoRNoQ variants form bars earlier than their fiducial haloes and the NoR variants, and (ii) what are the structural differences between the NoRNoQ variants and their fiducial haloes and NoR variants at the time the NoRNoQ variants form bars.

In Table C1, we can see that the NoRNoQ variants have the most massive Sérsic and exponential components (as expected since these variants have the highest total stellar masses) and at the same time the lowest D/T ratios¹⁰ (i.e. highest B/T ratios). In addition, if we only take into account haloes that are barred at $z = 0$ (i.e. all haloes except for Au-06NoR), we see that the effective radii of the NoRNoQ

variants are the smallest. Therefore, these central components apart from more massive are also more centrally concentrated whilst maintaining low Sérsic indices. These results agree with what we reported in Section 3.3 and discussed in Section 6, and indicate that these central components are more disc-like components which promote bar instabilities, rather than high-Sérsic index, dispersion-dominated bulges which would have suppressed the formation of the bar.

¹⁰The D/T values for Au-06 and Au-06NoRNoQ both appear as 0.88 but the actual values are 0.8811 and 0.8793, respectively. Thus, Au-06NoRNoQ has slightly lower D/T hence slightly higher B/T ratio.

This paper has been typeset from a $\text{\TeX}/\text{\LaTeX}$ file prepared by the author.