

5-30-1994

Independent- May 30, 1994

Joseph D. Yovino

Follow this and additional works at: <https://neiudc.neiu.edu/independent>

Recommended Citation

Yovino, Joseph D., "Independent- May 30, 1994" (1994). *The Independent (1988-present)*. 123.
<https://neiudc.neiu.edu/independent/123>

This Newspaper is brought to you for free and open access by the NEIU Student Newspapers at NEIU Digital Commons. It has been accepted for inclusion in The Independent (1988-present) by an authorized administrator of NEIU Digital Commons. For more information, please contact h-owen3@neiu.edu, l-wallis@neiu.edu.

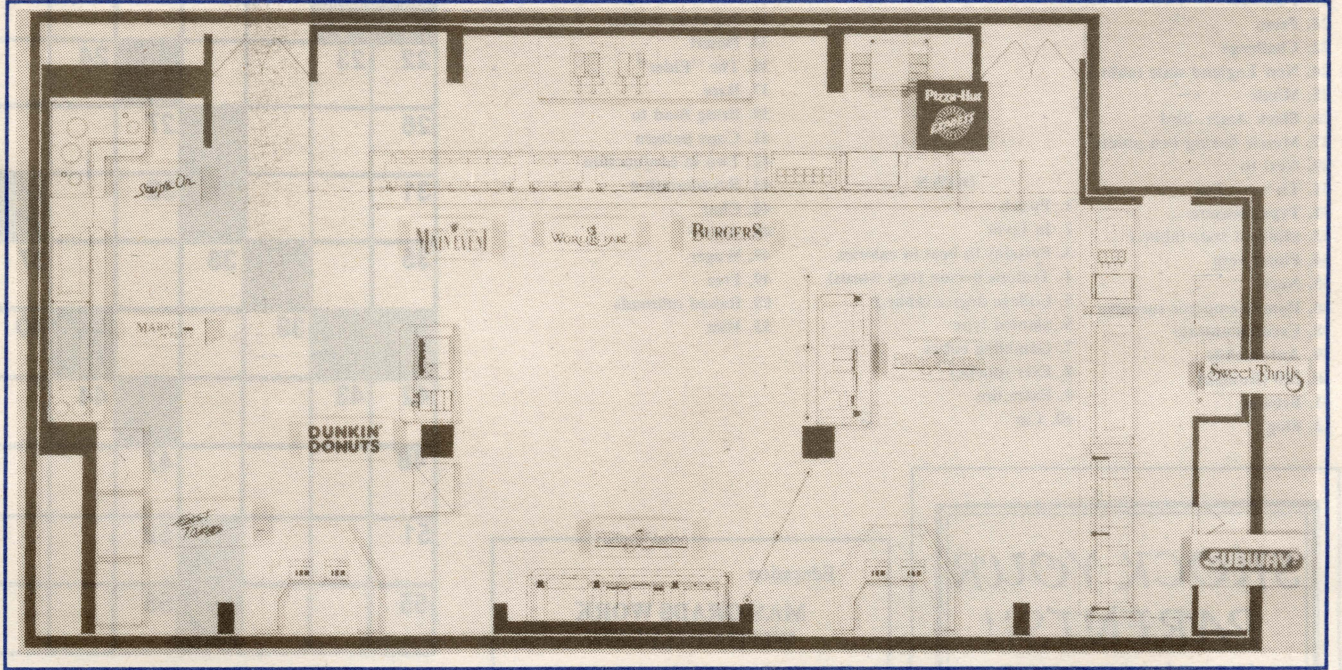
Cafeteria to get facelift for Fall

by Colleen Kroll

After several months of hard work by the Cafeteria Quality Team, the Food Service Selection Committee, Commuter Center Management, and members of the University community Northeastern has decided on a new food service contractor for the cafeteria.

This coming fall semester students, administration, and staff will be able to choose from an unusually wide variety of foods for their breakfast, lunch, dinner, and snacking pleasure. After groundbreaking this summer and \$200,000 worth of remodeling, Northeasternites will be exposed to not only the traditional favorites of soup, sandwiches, burgers, and Pizza Hut pizza, and Starbuck's coffee, but also novelties which will include but are not limited to: Subway subs, frozen yogurt, and even health food according to the spokesman from Morrison's who also manages food services at the University of Illinois at Chicago. As of present not all contracts have been signed with various restaurant chains.

Remodeling is expected to be completed in August and changes will allow for more space, a brighter atmosphere, and improved service. One new concept of Morrison's is to prepare hamburgers in a way that will allow them to be fresher by not



The cafeteria as it shall look in August.

leaving them under lamps as long after they are cooked as in common burger making practice.

Until August, Morrison's has temporarily set up outside of Beck's bookstore in the courtyard and will offer the food items that they can under their limited resources.

According to Michael McIntyre who is the Assistant Director of the Commuter Center, the university renewed a one year contract with Ser-

vice America which was later bought out and then continued management for a total of four years. The university began acquiring suggestions from cafeteria frequenters about what they would like and then sent this information to food service management companies. The companies returned their proposals, one of the bids happened to be from the previous management but in the end the title ended up with Morrison's who now has a

ten year contract with Northeastern. The university plans to repaint the lounge area and refinish the floors with other possible changes as far as seating arrangements.

While little of the cafeteria will be recognizable, most of the union workers from the previous staff will remain. According to McIntyre, "the food and atmosphere will be improved, but the familiar friendly faces of the workers will remain."

French students honored for academic achievement

by NEIU French Club

On Thursday evening, May 26, 1994, the Department of Foreign Languages and Literatures and the Northeastern Illinois University French Club held the fourth induction ceremony of the *Pi Delta Phi* National French Honor Society, *Iota Epsilon Chapter*. A total of twenty-one advanced level French students were inducted as new members. Dorette Klein, a French professor and Faculty Advisor, Sharon Jackson, Chapter President, and Jean-Paul Dany, Cultural Attaché of the French Consulate opened the festivities. The program also featured performances of French Baroque chamber music by the *Chicago Orchestral Ensemble*, a quartet founded by Yves Cohen, conductor of Skokie Valley Symphony. A scene of Molière's classic comedy *L'Avare* (The Miser) was presented by Yahale Yadede, a chapter initiate, and Thomas Griffin, a long-time *Pi Delta Phi* member and current director of the Foreign Language Laboratory at Northeastern.

Pi Delta Phi was first founded as a department honor society at the University of California, at Berke-

ley, in 1906. Twenty years later, *Pi Delta Phi* declared itself the National French Honor Society and chartered the *Beta Chapter* at the University of Southern California in 1925.

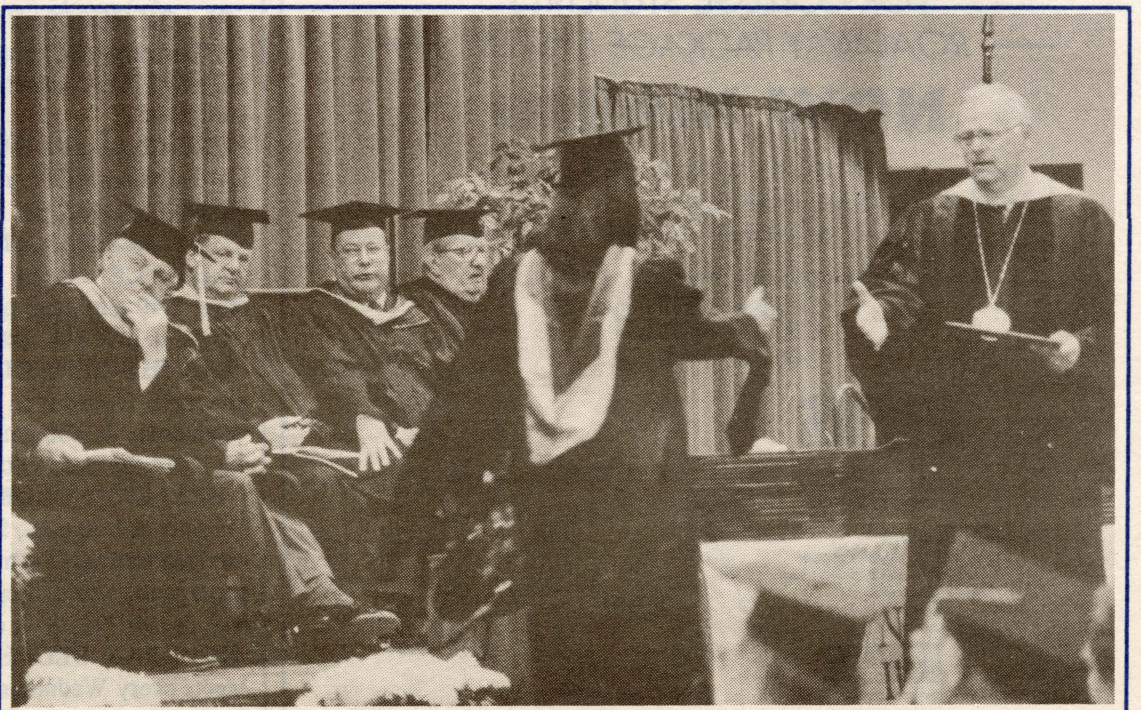
Since the Second World War, *Pi Delta Phi* has enjoyed phenomenal growth. There are now 271 chapters established nationwide, as well as chapters at French universities in Paris and Aix-en-Provence.

The *Iota Epsilon Chapter* was founded at Northeastern on November 1, 1979, with its first induction ceremony. Sharon Jackson became its first and current Chapter President, with Professor Dorette Klein

Faculty Advisor. Since that time, inductions were held on March 4, 1982, and October 8, 1987. With the Fourth Induction Ceremony, chapter membership totals fifty-two regular members and six associate members.

Pi Delta Phi recognizes students who have distinguished themselves in the study of French and the cul-

tures of the French-speaking world. It is an integral part of the activities of the NEIU French Club, which sponsors the performances. If you are interested in assisting with these events, or in joining the French Club or *Pi Delta Phi*, please contact President Frencoise Vanderlinden, Professor Dorette Klein, or Tom Griffin at extension 3033.



Martin Felix / Independent

President Lamb congratulates the graduating class of 1994.

The summer Crossword Companion

- ACROSS**
1. Animal protection group abbr.)
 5. To wait
 9. Hang below
 12. Arabian native
 13. Mix
 14. Afghanistan coin
 15. Red or green
 17. Salt of acetic acid
 19. Foreseer
 21. Press
 22. Challenge
 24. New England state (abbr.)
 25. Mimic
 26. Black Amer. bird
 27. Muscle having two points
 29. Next to
 31. Tic — Toe
 32. Type measure
 33. Midwest state (abbr.)
 34. Plural verb
 35. Near
 36. Roman emperor surname
 38. Excommunicate
 39. Automobile
 40. 200 (Roman)
 41. Browns
 42. Flog
- DOWN**
1. Pouch
 2. In favor
 3. Pertains to heat in calories
 4. Tedious person (two words)
 5. College degree (abbr.)
 6. Slanted type
 7. Gambling cubes
 8. Ever (poetic)
 9. Extra tire
 10. Car
11. Grassy open area
 16. Sun god
 18. Upsets
 20. Murder
 22. Information
 23. Anatomy (abbr.)
 25. One who mimics
 27. Fuzzy animal
 28. Pass a bill
 29. Farm building
 30. Japanese monies
 34. Desert
 36. The "Elder"
 37. Rare
 39. Bring food to
 41. Copy pattern
 42. Two in conjunction
 43. Reverberation
 44. Char
 45. Above
 47. Wager
 49. Free
 50. Raised railroads
 53. Him

| | | | | | | | | | | | | |
|----|----|---|----|--|----|----|----|----|--|----|----|----|
| 1 | 2 | 3 | 4 | | 5 | 6 | 7 | 8 | | 9 | 10 | 11 |
| 12 | | | | | 13 | | | | | 14 | | |
| 15 | | | | | 16 | | 17 | | | 18 | | |
| | | | 19 | | | 20 | | | | 21 | | |
| 22 | 23 | | | | 24 | | | 25 | | | | |
| 26 | | | | | 27 | | | 28 | | | 29 | 30 |
| 31 | | | | | 32 | | | 33 | | | 34 | |
| 35 | | | 36 | | | 37 | | | | 38 | | |
| | | | 39 | | | 40 | | | | 41 | | |
| 42 | 43 | | | | 44 | | | 45 | | | | |
| 46 | | | | | 47 | | | 48 | | | 49 | 50 |
| 51 | | | | | 52 | | | 53 | | 54 | | |
| 55 | | | | | 56 | | | | | 57 | | |

Answers to the "summer Crossword Companion" on page 4.

SHOCK YOUR PARENTS!! GET A JOB!

Need a temporary start working in corporations throughout the Chicagoland area? We can help! Our service specializes in Legal/Clerical support and Light Industrial jobs. Please call us today at **1-800-701-HERO (4376)** for an office near you! EOE

INTERIM PERSONNEL

Education

MAY GRADS WORK WITH CHILDREN!

Child development, ed. ed., psychology and related grads, start your career at one of Chicagoland's finest full service child care centers or on-site (Fall 1994) elementary children's programs.

Children's World offers an unrivaled career path, competitive compensation, full benefits, professional training and development programs, excellent work environment and more. We pursue N.A.E.Y.C. standards! For more information, call or send resume to:



Children's World LEARNING CENTERS

Mr. Jef Free
Area HR Specialist
CHILDREN'S WORLD LEARNING CENTERS
1017 Hawthorn Drive
Itasca, IL 60143
(708) 875-3134

Equal Opportunity Employer M/F

Student clubs and organizations

- **A.A.** - meets Wednesdays 12-12:50 in the 1:40-2:50 in CLS 3096. Meetings are closed, 12 Step Study.
- **A.C.E.I.** - Association for Childhood Education International meets every third Thursday of the month at 1:40 in CLS 3044.
- **APOCALYPSE LITERARY ARTS COALITION** - meets Wednesdays, 3:00, E-041 or stop in anytime.
- **A.P.I.C.S.** - American Production and Inventory Control Society Inc., board meets first Tuesday of the month, guest speakers on second Tuesday of the month, 1:40 p.m. C.C. 217.
- **ART CLUB** - meets Thursdays, 1:40 p.m., B 119.
- **ASPIRA** - meets Thursdays, 1:40 p.m., S 112.
- **BLACK CAUCUS CLUB** - meets Thursdays, 1:40 p.m., CLS 3031.
- **BLACK HERITAGE CLUB** - meets on Thursdays, 1:40 p.m., CLS 3031.
- **CHIMEXLA** - meets Tuesdays, 1:40 p.m., E 051.
- **CRIMINAL JUSTICE STUDENTS ORGANIZATION** - meets Thursdays, CLS 3005, 1:40-2:50.
- **GAY, LESBIAN AND BISEXUAL ALLIANCE** - meets alternate Thursdays, 1:40 p.m., and alternate Fridays, 7:00 p.m. in A 108, ext. 3856.
- **EARTH SCIENCE CLUB** - meets on alternate Tuesdays, 1:35 p.m. and Wednesday at 3:00 p.m., call Marianne ext. 4014 for more information.
- **HELLENIC CLUB** - meets every Tuesday at 1:40 p.m., S-111.
- **INDEPENDENT** - Only the best newspaper in the world. Stop by anytime, E-049. or call 794-2812, or ext. 2812.
- **INDO-PAK STUDENT ASSOC.** - Meets every Wednesday at 2:00 in the Student Organization Conference Room located in the lower level of the Commuter Center.
- **INFINITY** - meets first and third Tuesdays of the month, 1:40 p.m., CLS 2031.
- **PHYSICS CLUB** - meets every third Monday of the month, 8:00pm, S-233.
- **MANAGEMENT CLUB** - sponsors a variety of events on campus. For more information regarding membership, contact M. O'Malley at ext. 2648.
- **MUSLIM STUDENTS ASSOC.** - meets every other Thursday, 1:40 p.m., S 144, 1A.
- **NSAB** - Northeastern Student Activities Board meets first and third Thursdays, E -035, ext. 3859.
- **QUE ONDEE SOLA** - meets Thursdays 1:40 p.m., E 041.
- **S.C.E.C.** - Student Council for Exceptional Children meets on alternate Thursdays at 1:45 p.m. in CLS 3020.
- **THE SCI-FI CLUB** - meets on alternate Tuesdays, 1:40 p.m., CLS 2005.
- **SIGN LANGUAGE CLUB** - meets at the H.E.L.P. office, B-110, Monday and Friday at 1:40 p.m.
- **THE SOCIOLOGY CLUB** - meets every third Tuesday, 1:40 p.m., CLS 2094.
- **SPANISH CLUB** - meets Tuesdays, 1:40 p.m., in CLS 2094.
- **STUDENT ENVIRONMENTAL ACTION COALITION** - meets Tuesdays, 1:40 p.m., S 202.
- **STUDENT SENATE** - stop by E-210, above Beck's Bookstore, anytime.
- **U.P.R.S.** - Union of Puerto Rican Students meets Wed. 9:00 p.m., E 041.
- **WSU** - Women Students United meets Thursdays, 1:40 p.m., A108, ext. 3302.
- **WILDRENESS CLUB** - meets every Thursday, 1:40 p.m., S-113.
- **WZRD 88.3 F.M.** - stop by E 059 anytime.

ATTENTION COLLEGE STUDENTS

Up to \$7.00 per hour to start

JOBS!!

Tuition Assistance

YEAR ROUND PART-TIME JOBS FOR COLLEGE STUDENTS
— ROADWAY PACKAGE SYSTEM —

NOW HIRING

- Earn up to \$7.00 + \$1.00/hr. Tuition Assistance
- Work up to 5 hours (per day)
- Jobs available for unloaders, loaders, dock data entry

Shifts Available (Monday - Friday)

- 5:00 p.m. - 9:00 p.m.
- 8:30 p.m. - 1:30 a.m.
- 2:00 a.m. - 7:00 a.m.

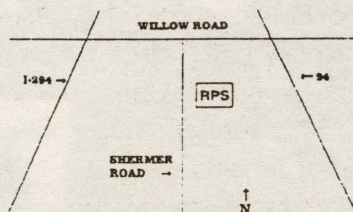


2945 Sherman Rd.
Northbrook, IL 60062
(708) 272-4310

- REQUIREMENTS**
- You must be 18 years or older
 - You must be able to provide your own transportation
 - You must be able to work a manual labor job



is an equal opportunity/affirmative action employer



Extension 200

Public Safety Concerns Compiled by Public Safety Officer Bob Paprocki



- **April 12 - Station information:** A student complained her auto door was bumped by an unknown person who then left the scene. No charges were filed.
- **April 13 - Criminal damage to property:** Graffiti was found in a washroom in the Commuter Center. A loss of \$20.00. **Medical assistance:** A student was injured in the Commuter Center. She was taken to Health Services, then released. **Disturbance:** A domestic disturbance occurred on campus. No charges were filed. **Station information:** An instructor reported an unpleasant encounter with a student on campus.
- **April 14 - Station information:** Three staff members reported unknown person(s) using a department computer after the office was closed. **Criminal damage to property:** Graffiti was found in the Classroom building. A loss of \$20.00. **Theft:** Two hubcaps were reported stolen from an auto parked in the J-Lot. A loss of \$40.00. **Accident:** A handicapped student was injured when her scooter tipped-over in the Classroom building. She declined medical attention.
- **April 16 - Station information:** A staff member found a department office computer had been used by unknown person(s). **Theft:** A student reported \$174.00 in textbooks and other materials missing from a locker in the Classroom building.
- **April 18 - Theft:** \$130.00 in textbooks and other materials were reported stolen from a locker in the Classroom building. **Theft:** A student reported leaving her wallet near a payphone. When she returned the wallet was gone. A loss of \$80.00. **Theft:** Two students reported \$204.00 in textbooks and other materials missing from their locker in the Classroom building. **Theft:** A student reported his city window sticker stolen from his auto while parked in the M-Lot.
- **April 19 - Station information:** A staff member reported receiving threats from two non-students. No charges were filed.
- **April 20 - Battery:** A student was struck by another classmate in the Classroom building. No charges were filed. **Criminal damage to property:** A student's auto was damaged

while parked in the A-Lot. Another student was subsequently arrested after an investigation.

- **April 21 - Disorderly conduct:** A graduate student became enraged and began punching a wall when asked for identification by a staff member in the Science building. No damage occurred and no charges were filed. **Station information:** A student reported her auto was struck by a baseball while she was driving on the access road. No damages were assessed. **Criminal damage to property:** A library staff member reported two students "tagging" furniture in the building. No evidence was found by a public safety officer. **Disorderly conduct:** A student became irate when a copy machine malfunctioned. No charges were filed.
- **April 22 - Accident-property damage:** \$2,500.00 damage was done by a contract truck driver who was delivering concrete to WTTW. The driver damaged a light pole and landscaping on campus.
- **April 25 - Theft:** A student reported \$60.00 worth of art supplies missing from her storage area in the Art center. **Criminal damage to property:** Two instructors' office doors were damaged in the C-building by unknown person(s).
- **April 26 - Accident-property damage:** Two drivers collided in the D-Lot. An estimated loss of \$500.00. **Station information:** A student reported being almost run-over by an auto on a campus parking lot. No description of the auto was given. **Criminal damage to property:** A state-owned vehicle was damaged while parked in a campus lot. **Criminal damage to property:** A window near the B-wing was broken by unknown person(s). A loss of \$100.00.
- **April 27 - Medical assistance:** A student slipped in a hallway in the E-building. She was treated by health services and released. **Criminal damage to property:** A large

- window was broken near the Village Square by unknown person(s). A loss of \$100.00.
- **April 28 - Theft:** A student reported leaving her wallet in the library. When she returned it was gone. Some of the materials were returned. A loss of \$30.00. **Suspicious auto:** Three persons were stopped on St. Louis avenue for driving without a license. They were released to the custody of a family member.
- **April 29 - Criminal damage to property:** Graffiti was discovered in the library. A loss of \$20.00. **Motor vehicle theft:** A staff member reported his vehicle and approximately \$2,900.00 in personal property taken from the M-Lot. **Medical assistance:** A student became ill in the Classroom building. She was treated and released by health services.
- **May 1 - Criminal damage to property:** An unknown driver struck the locked north access gates, bending the gate and breaking the lock. A loss of \$50.00.
- **May 2 - Theft:** Two modems were reported stolen from the Chicago Teachers Center. A loss of \$333.00. **Criminal damage to property:** A student reported his auto damaged by unknown person(s) while parked in the F-Lot.
- **May 4 - Disorderly conduct:** An instructor received a threat by an unknown person over the telephone. **Investigate explosive:** The Classroom building was searched because of a false bomb threat by an unknown person. **Burglary:** An instructor reported art supplies taken from

- the Art Center. A loss of \$30.00.
- **May 5 - Station information:** A student complained of being followed by a non-student while off campus. No charges were filed. **Disorderly conduct:** A fire alarm was activated from the third floor Classroom building by unknown person(s).
- **May 10 - Disturbance:** A parent was escorted from the Day Care Center after he refused to follow standard procedures. **Fire:** A small fire was extinguished by the Chicago Fire Department near the P.E. building. The fire was started by accident.
- **May 12 - In-state warrant:** A complaint from a staff member about three youths tampering with an auto led to the discovery of an arrest warrant for one of the youths. He was released on a \$200.00 bond. **Suspended license:** A driver was stopped after disobeying a Stop sign on campus. A wallet reported stolen was found in his auto. The driver was released on bond.
- **May 13 - Service to another agency:** An off-duty NEIU Police Officer observed two persons breaking into a car. One offender was arrested and charged with a felony. **Station information:** A student's bill was paid in-part with a counterfeit bill. The bill was sent to the Treasury department after the student was interviewed.
- **May 15 - Theft:** A computer part was discovered missing in the P.E. building. A loss of \$165.00. **Disorderly conduct:** A staff member reported harassing phone calls to her office by unknown person(s).

BAGEL WORLD

10% OFF ALL FOOD

Breakfast & Deli Menu

Monday - Friday 6:30 A.M. - 6:00 P.M.

Saturday & Sunday 7:00 A.M. - 4:00 P.M.

Bagels Baked Fresh Daily

.....

509-9455 • 5240 N. Pulaski Road

Next to Jewel-Osco

Chicago Needs

TEACHERS

In Bilingual and Special Education

Recruitment and Certification

Chicago Public Schools

1819 West Pershing Road

Chicago, Illinois, 60609

(312)535-8260

Letters to the Editor

The disabled are enabled

We want to take this opportunity to notify you that Northeastern has taken one more step towards making our campus more accessible for students with disabilities. NEIU has purchased two new tables and four chairs for all classrooms. They are intended for use by our students who use wheelchairs, or are otherwise unable to use the current tablet arm seating.

These tables should be adjusted to a convenient height and located near a classroom doorway. If the tables are not at the convenient height or not located near a doorway in the rooms where professors teach, these teachers are advised to call Facilities Management (x3930) to report what changes need to be made in the specific classroom.

Please do not move the tables to the hallway or stairwell, which entirely defeats the purpose of having them. Eventually, all classrooms will be completely furnished with tables and chairs.

Thank you very much for your cooperation.

Margo L. Smith

Joseph P. Kish

Enable the disabled!

The Board of Governors have decided to spend a great deal of the students' money to make NEIU look good on the outside. I had hoped that they would invest some of these funds into the Handicapped Educational Liaison Program (HELP). Instead of spending thousands and thousands of dollars on the Bookstore and the commuter enter, I believe that some money should definitely been spent on the HELP department's office.

At the office of Handicapped Students Liaison Program, the staff is working hard to accommodate those students with special problems. Many problems have cost disabled students a grade. For instance, some students require a special testing area because of a disability or special circumstances. However, these areas are not always ideal test-taking conditions, because people are working in the area or others are disturbing the test taker by entering and exiting the area. Such incidents should not be allowed to occur! I think it is a form of discrimination against the learning disabled student that proper and separate test-taking facilities are not provided to accommodate their special needs, even though they pay the same tuition as everyone else!

The disabled students are seemingly penalized for the administration's lack of responsibility to provide a place for them to take examinations. Furthermore, a place without disturbances that might lower a student's grade. coordinator, Victoria Amy-Flippin informed me that a separate room has been established for the disabled students, but this room will be shared with another office. Well, that's all a disabled student needs! More distractions for these students. This is another example of the administrations complete disregard for the Handicapped.

Further, it seems clear that they have put the disabled students' issues on the back burner where it will remain until they are retired.

Steve Horvath

The Immigration Lottery, the odds be with you.

As you may have heard, this year's immigrant visa lottery will begin and end this June with a total of 55,000 winners worldwide. The Immigration and Naturalization Service has chosen only certain countries from around the world to be included in the lottery. For detailed information check with the immigrant organizations or an attorney who is familiar with the immigration laws.

Applications will need to be filed soon. The application period begins at 12:01 a.m. Eastern Standard Time on Wednesday, June 1, 1994 and ends at midnight on Thursday, June 30, 1994. Any applications received before 12:01 a.m. Eastern Standard Time on Wednesday, June 1 or after midnight on Thursday, June 30, 1994 will not be included in the lottery. It does not matter when your application is received, as long as it is received during the month of June. One application will not have priority over another and the lottery is not based on a first-come, first-served basis. However, make sure that the application arrives well before the June 30 deadline.

To enter the lottery you must be considered a native of one of the many countries that are designated for the lottery. Even if you were not born in one of these countries, you may still be considered a native of that country for the lottery. If you are unsure of your classification, contact an immigrant organization or an attorney familiar with the immigration laws.

There is also a minimum educational or work requirement that must be satisfied in order to enter the lottery. The minimum requirement is a high school education or an equivalent degree. However, passing the General Educational (G.E.D.) test will not satisfy the educational requirement for the lottery. Some forms of work experience, though, may qualify a person. If you feel that both the requirement of being a native of a country designated for the lottery and the educational or work experience requirement can be satisfied, an application may be submitted to the

lottery.

Each person may only submit one application, and submission of more than one application per person will result in disqualification. A husband and wife should each submit their own separate application.

Furthermore, there are specific instructions that must be followed when applying for the lottery, otherwise your application will be disqualified. Find someone who is knowledgeable in the application process to help you prepare the information. If you have friends or relatives living outside of the United States, advise them to go to the U.S. Consulate to obtain information. Additionally, immigrant organizations or attorneys in the United States may be able to help people living outside the United States.

After your application has been submitted, you will not be notified unless your application has been chosen. If you do not hear anything by the first or second week in October, you can assume that you were not chosen. If you are notified that your application was chosen, you still will not have your green card but will receive instructions how to obtain one. Follow these instructions promptly and carefully.

Finally, if you do not win the lottery, you may reapply next year, but you will have to fill out a new application.

Mark Morgenstern
Attorney at Law

Answers to the "summer Crossword Companion" from page 2.

| | | | | | | | | | | | | |
|---|---|---|---|---|---|---|---|---|---|---|---|---|
| S | P | C | A | B | I | D | E | S | A | G | | |
| A | R | A | B | S | T | I | R | P | U | L | | |
| C | O | L | O | R | A | C | E | T | A | T | E | |
| | D | R | A | C | L | E | | I | R | O | N | |
| D | A | R | E | R | I | A | P | E | | | | |
| A | N | I | B | I | C | E | P | S | | B | Y | |
| T | A | C | E | M | N | E | A | R | E | | | |
| A | T | C | A | E | S | A | R | | B | A | N | |
| | C | A | R | | C | C | | T | A | N | S | |
| B | E | A | T | | S | A | T | U | R | N | | |
| O | C | T | O | B | E | R | | P | A | D | R | E |
| T | H | E | | E | A | C | H | | C | O | I | L |
| H | O | R | | T | R | E | | E | N | D | S | |

Independent

Room E-049, 5500 N. St. Louis Avenue, Chicago, IL 60625
312-794-2812

The student newspaper of Northeastern Illinois University is published every two weeks except during final examinations and semester breaks. Letters to the editor are encouraged, but must be signed by the author. "Name withheld by request" can be added by the editor. Letters should be typed, or clearly written, and limited to about 200 words. We reserve the right to edit or omit any letters received. Deadline is the Friday ten days before the issue in which a contribution will appear.

Editorial Board: Editor in Chief: Joseph D. Yovino, Business Manager: Betty Boduch, Calendar Editor: Anastasia Epstein, Entertainment Editor: Sasha Gerritson, Features Editor: Ellin Beltz. **Staff Members:** Juan Fernandez Saines, Raun Gallegos, Tina Haglund Spitz, David Tramer, Carlo Basile, Sara Capetillo, Colleen Kroll, and Alex Jomarron. **Staff photographers:** Steve Fitzer, Martin Felix, Tammy Smith, and Mary Collins. **Faculty advisor:** Timothy Scherman.

Voice of the Campus

The opinions expressed on this page are those of members of the university community, and do not necessarily coincide with those of the editorial board of the Independent.

Editor fails ECE

The English Competency Exam, which claims to weed out those people who are not proficient in the art of writing complete and understandable English sentences and paragraphs, does not accomplish its task.

I know. I have been Editor in-Chief of the Independent for the past year, and I failed this exam. I failed it because they lost a page of my essay. I had proof that they lost this page, because one of the people overseeing the test had read my essay when I left. This proof was of no consequence. I was told that I had to retake this farcical exam.

I spoke to Dean Duster about my situation, and she assured me that I would receive an apology from Michael Johnson (The chairperson of the Assessment and Testing department) for the inconvenience. I never received this apology.

A department which costs the University \$122,257 a year (according to the 93-94 NEIU internal budget) cannot keep track of its test papers. The department of Philosophy only costs \$148,564 a year and, according to Dr. Audrey Reynolds, they keep track of their test papers.

"Rumors abound" as to the whereabouts of the notorious "missing page." A theory commonly held

is that the Program Advisor for the Assessment and Testing department, Jung Koo, misplaced the mysterious page as she was gazing at the front page photo (Independent, April 4, 1994) of her husband Joo Koo asleep at his desk. Perhaps, she also became sleepy at this time, and as she slumped into her chair, her muscles relaxed releasing my page which immediately flew to the nearest trash can.

How convenient for them that the next date for this exam is June 4, I shall be in Alaska picking fish from the icy waters.

What does this test prove anyhow? Does it prove that a student is able to pursue a degree in Microbiology? I wonder if a great scientific mind such as Albert Einstein would have completed this exam satisfactorily. Would NEIU have allowed him to graduate?

This test and the department represent another large and growing tumor in the cancer disabling the body of this University, bureaucracy.

Matthew R. Berg

Dedicated professors, unresponsive administrators

Dr. Boni,

I would like to tell you a few things about the University you help to run. First, I have received a fine education here. I will be proud to say I am a graduate of Northeastern Illinois University. The professors are not only dedicated to the students but their demand of excellence has fueled my personal desire to learn. Doctors Barber, Mendez, and Fellows are just a few of the exceptional educators I have encountered in my educational experiences at Northeastern.

Second, the bureaucracy is exasperating and excessive. I spoke to you last year some time about your decision to combine the Earth Science, Physics, and Chemistry departments. I suggested to you that it was a poor decision. You cited state budgets cuts, etcetera. Yet, I see your penchant for poor decision making continues unabated. The class offerings for Summer 1994 were abysmal. If I am to believe the University newspaper you made the decision to reduce the class offerings. I resent the fact that for the last two years I have had to beg, plead, and whine to get into classes. I will, of course assume budget cuts.

In light of the fact that Northeastern has a Division I athletic program and that administrators are receiving new 486 computers I am profoundly confused. The shift of monies, instructional costs to administration, and athletics is a crime. (If it is not already it should be). Nobody goes to the games anyway, we are all too busy trying to eke out a living so as not to starve to death. In the past two and a half years I have never even had the time nor the inclination to go to a single athletic event.

You seem unresponsive, at best, to the realities of the students. The majority of us work at least part-time and the longer it takes us to graduate means the more time spent being poor, poverty stricken, broke, and the like. I apologize for pointing out the obvious but you not only seem unaware but unconcerned.

Third, I have heard repeatedly that the University is some fifty professors short of a full teaching staff. Why??? I have also had part-time faculty who were excellent instructors but by no means a replacement for legitimate professors.

Seowa Gbala

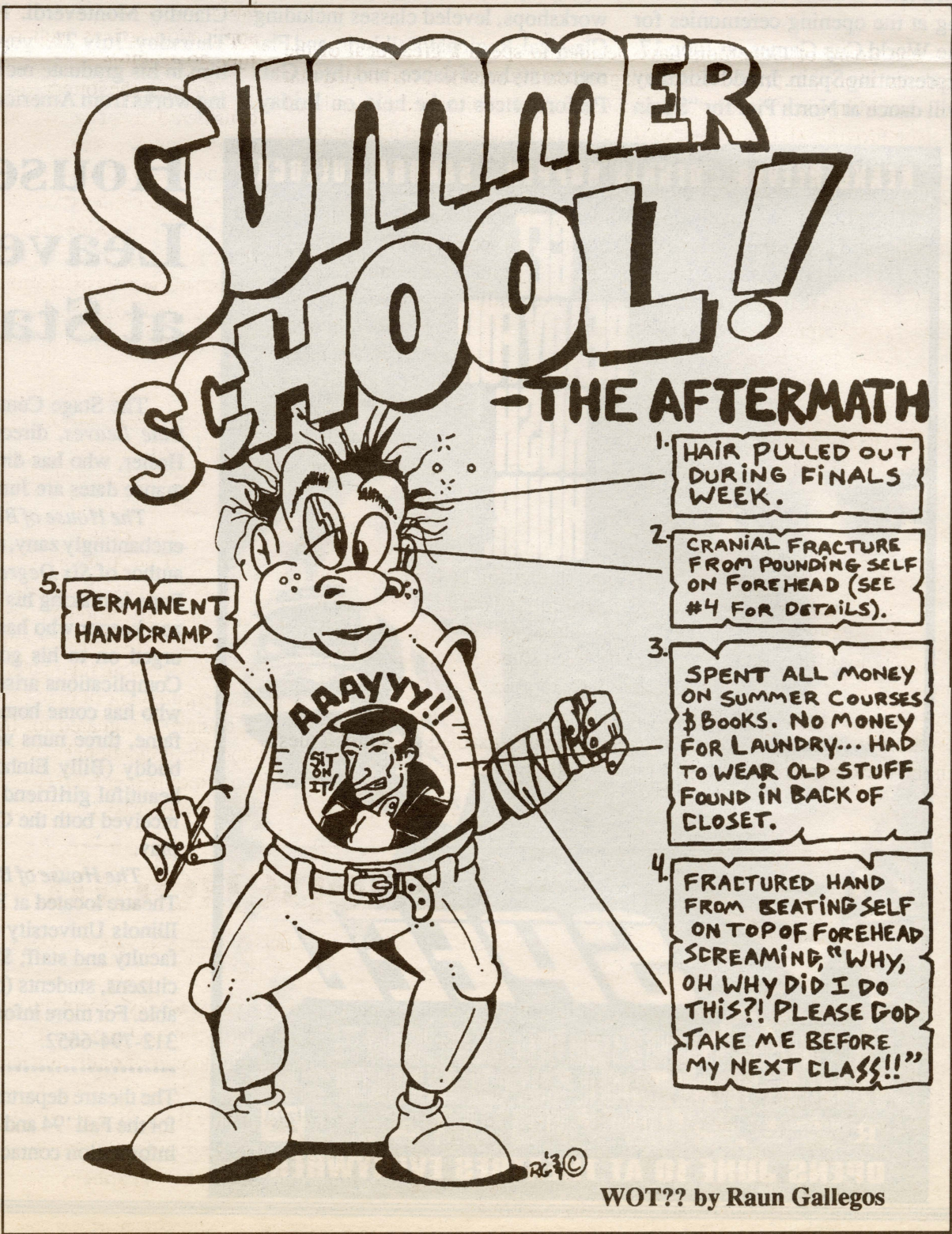
Thanks Doc!

During the 1994 Spring Semester, I had the pleasure of attending the Linguistic course, "Child's Acquisition of Language," taught by Doctor Teddy Bofman. After finishing this course, I feel that it is my duty to enlighten our community of Students about the wonderful experience of being under the supervision of Dr. Bofman. Dr. Bofman made us feel very comfortable as she explained the course and the project we had to accomplish. She offered and gave help to all of us in order to begin our project. During the Semester Dr. Bofman was extremely helpful. She had explicitly explained the material to us, and she always responded to questions. She had shown genuine interest to our inquiries and always responded in a favorable manner.

Long before the time had come for our final Project's due date, her door was always open to us at any time—provided that an appointment was made in advance. Dr. Bofman accepted copies of rough drafts, she then inspected the rough drafts, returned them to the students with advice on direction, organization, and other suggestions which she deemed necessary for the project to be well presented. She did not leave any student's project alone until the student felt comfortable with his or her work. This has clearly demonstrated her utmost concern and caring for her students.

In my final note, I can only say that Dr. Bofman is a sincere, conscientious, and concerned professor who truly cares about the students in her class! Thank you Doctor Bofman for the wonderful class!

Steve Horvath



WOT?? by Raun Gallegos

Entertainment

Summer Fun in Music, Dance, and Art

by Sasha Gerritson

Although it seems the University virtually shuts down during the Summer, there are some exciting Art, Music and Dance events taking place in June, July and August that shouldn't be missed!

"Juried Student Exhibition". From May 26 - June 16, the NEIU Art Gallery will feature the art works of 23 NEIU students. A reception will be held on May 31 from 2:15 to 3:45 p.m. The juror for the show will be Audrey Niffenegger.

On Monday, June 6, Soprano Sigrid Alexandersen will present her graduate recital, assisted by Jane Kenas, piano, in the University Auditorium. Sigrid is a coloratura soprano which is perfect for the program of "bel canto" music by Rossini, Bellini and Donizetti that she'll be singing. The performance starts at 7:30 p.m., and admission is free.

The Ensemble Español Spanish Dance Theater will be performing at the opening ceremonies for the World Cup Games on June 17, representing Spain. In addition they will dance at North Pier for "Spain

Day" and at the Carlton Club in the Ritz-Carlton Hotel for "Spain Night" that evening. All of these performances are being sponsored by the Embassy of Spain.

On Thursday, June 23, Soprano Gillian Kelly will sing an all German program of music by Richard Strauss and Richard Wagner for her graduate recital. Gillian was last seen in the 1992 NEIU Opera Workshop production of "Falstaff" in the role of Mrs. Ford.

On July 13, the Ensemble Español Spanish Dance Theater will perform at the Art Institute of Chicago at the opening dinner of the "Goya" exhibit.

The Ensemble Español Spanish Dance Theater presents the 18th anniversary of The American Spanish Dance Festival to be held from July 5 - 17, on campus in the Dance Department and the University Auditorium. The Festival will include international guest artists from Spain and Puerto Rico, day and evening seminars and workshops, leveled classes including Classical, Regional/Folkloric, and Flamenco styles of dance, and three Gala Performances to be held on Friday,

July 15, at 8:00 p.m., Saturday, July 16, at 8:00 p.m., and Sunday, July 17, at 3:00 p.m. Admission is free to these concerts of Spanish Dance for all NEIU students with ID's. General admission is \$15.00, students/seniors \$12.00 and children under 12, \$8.00. Dancers and Faculty of the festival include: Dame Libby Komaiko, artistic director & coordinator, Vidal Peral, dancer and faculty, Juan Ramon dancer and faculty, EDO, faculty, Maria Elena "La Cordobesa", flamenco singer, Mateo and Greg Wolfe, flamenco guitarists, and Nick "La Briola", percussionist. For further information and reservations contact Millie Parnias, Festival coordinator, at extension 3015 weekdays and 583-4062 after hours and weekends.

Many people saw Baritone Brian Kabat as "Orpheus" in the Spring Opera Workshop production of the opera by Claudio Monteverdi. Now, on Thursday, July 21, you can see him in his graduate recital singing works from American Musi-

cal Theater. Featured will be pieces by Andrew Lloyd Webber and Rogers & Hammerstein. The performance will be held in the University Auditorium at 7:30 p.m. Admission is free.

"Hearts in the Wood", a new musical with music and lyrics by Dr. Jim Lucas and book by Joanne Koch, will be performed at the Stage Center Theater on Friday, July 29 and Saturday, July 30, at 7:30 p.m. Directed by Alan Chambers of "New Tuners" theater, the show will have additional dates to be announced at the Theater Building on Belmont Avenue. Admission is \$3.00. For additional information call 794-29741.

The NEIU Opera Workshop will present its scene recital on Tuesday August 9 at 7:30 p.m. in the University Auditorium. Admission is free. Scenes from "La Traviata" and others will be performed.

Don't miss out on these cultural events offered FREE to the students, faculty and staff of NEIU!!!

House of Blue Leaves finds Home at Stage Center

The Stage Center Theatre will present John Guare's *House of Blue Leaves*, directed by veteran Stage Center member Richard Hesler, who has directed over 100 plays during his career. Performance dates are June 22, 23, 24, & 25 at 7:30 p.m.

The House of Blue Leaves almost defies definition: It is a wacky, enchantingly zany, outrageous, desperately sad farce, by John Guare, author of *Six Degrees of Separation*. The play is set on the day the Pope is making his first visit to N.Y.C. and concerns a middle-aged zoo keeper who has visions of making it big as a song writer. He is urged on to his goal by a downstairs neighbor (Bunny Flingus). Complications arise from his A.W.O.L. son (Ronnie Shaughnessy) who has come home to blow up the Pope for his fifteen minutes of fame, three nuns who happen into the apartment, an old boyhood buddy (Billy Einhorn) now a successful film mogul, and Billy's beautiful girlfriend (Corrinna Stroller). *The House of Blue Leaves* received both the Critics Circle Award and an Obie Award for best play.

The House of Blue Leaves will be performed at the Stage Center Theatre located at Bryn Mawr and Central Park on the Northeastern Illinois University campus. Tickets are free for all NEIU students, faculty and staff; \$8.00 for general admission, and \$6.00 for senior citizens, students (other than NEIU) and alumni. Group rates available. For more information please call the Stage Center Box Office at 312-794-6652.

The theatre department has an open position for Box Office Manager for the Fall '94 and Spring '95 terms. Full tuition is offered. For more information contact 312-794-2938 or extension 2938 on campus.

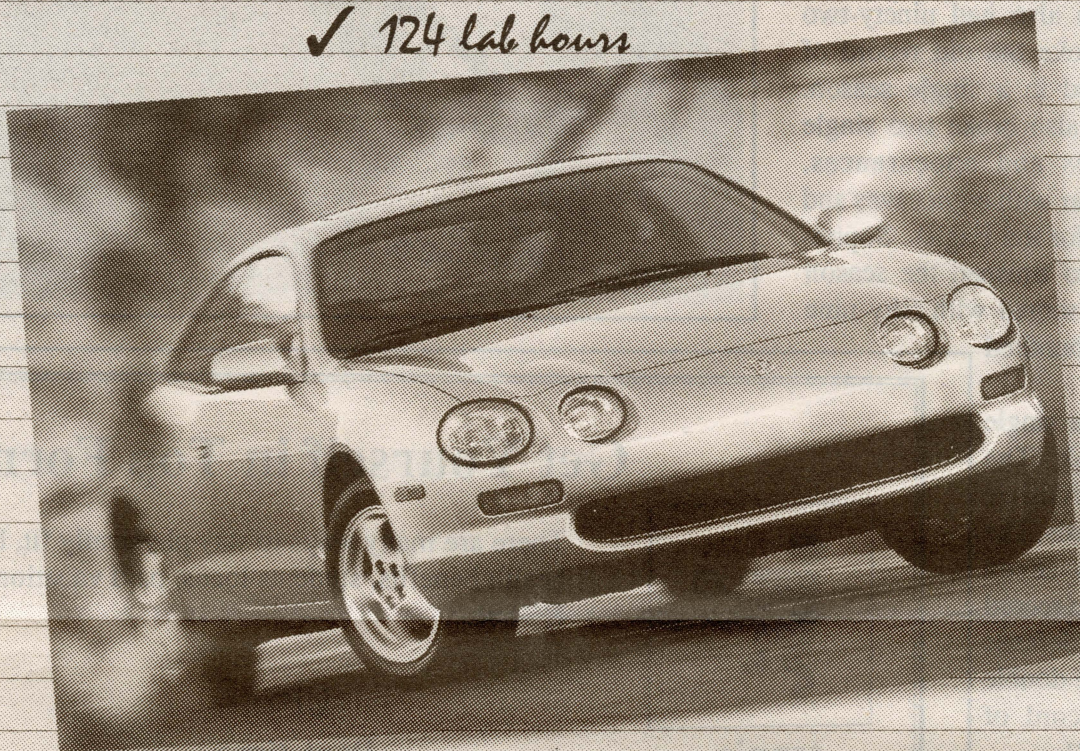
KEANU REEVES DENNIS HOPPER SANDRA BULLOCK

GET READY FOR RUSH HOUR.

SPEED

OPENS JUNE 10 AT THEATRES EVERYWHERE

- ✓ 460 textbooks
- ✓ 10,214 cups of coffee
- ✓ 97 all-nighters
- ✓ 812 pizzas
- ✓ 51 term papers
- ✓ 22 morning classes
- ✓ 124 lab hours



Congratulations! You Made It. Now The Fun Starts.

Class of '94 Toyota College Grad Program.
No Down Payment. No Payment For 90 Days.*

Shifting from school to career means adopting a whole new mind set. Words like dependable and quality become part of daily conversation. Face it, you've entered the real world. Reality, however, does have its fun moments. Take the '94 Toyota



Celica, Paseo, Tercel or 4x4. Sporty. Stylish. Well-built. And now available with Premier

finance rates.** Or choose our lease plan which requires no security deposit. Either way, you'll receive a one-year free roadside assistance plan for added security. Even if you're graduating within six months, you're still eligible. Just dial 1-800-CONGRATS for the details. So what are you waiting for? Permission?



See Your Local Toyota Dealer.

*Available to qualified customers through Toyota Motor Credit Corporation. Lease financing is available through World Omni Financial Corporation in AL, FL, GA, NC and SC. The total amount financed cannot be more than MSRP plus the cost of the dealer-installed options and required tax and license fees. Finance charges accrue from the contract date. The 90-day deferred payment is not available on lease vehicles or on vehicles with a cash selling price of less than \$10,000 in New Jersey. **College Graduate Program finance rate is the TMCC 60-month Premier rate. ©1994 Toyota Motor Sales, U.S.A., Inc.

Baseball rewrites record book

by Matthew Berg

The NEIU baseball team culminated a record-setting season by winning its last four-out-of-six home games. The Eagles finished the regular season with a record of twenty wins and thirty-two losses and a second place finish in the East Coast Conference behind rival Troy State University.

During the season, the Eagles rewrote much of the record book. NEIU had three different players break individual single season records. The team also broke two different season records as well, and two players made individual career records.

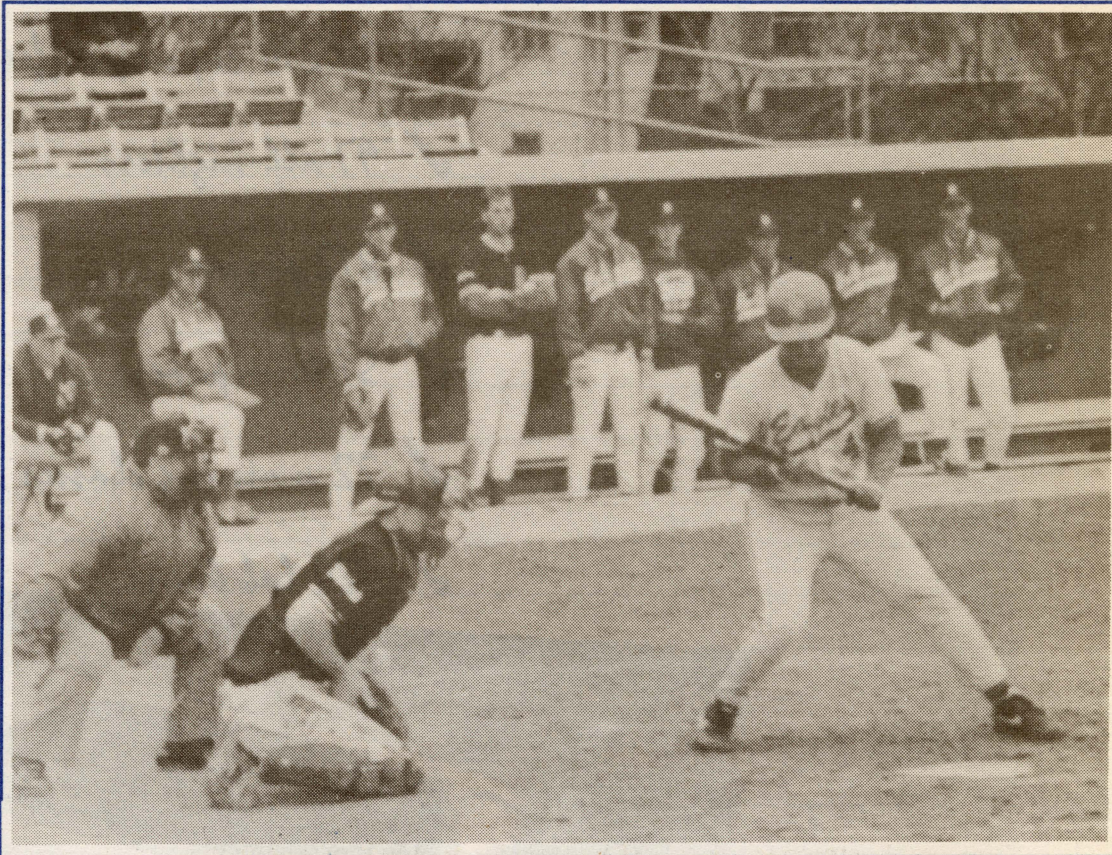
Pitcher Joe Yovino ended his career at NEIU with two individual single season records. Yovino tied a fourteen year old record by starting fourteen games in a year. Yovino also had ninety-two innings pitched which broke the old record of ninety-one innings pitched in a single season. Pitcher Craig Henderson also broke two single season records in saves and appearances. Henderson finished the year with eight saves and twenty-nine appearances for the Eagles. Sophomore Matt Majcherek also finished the season with new records in runs scored with fifty-nine and total at-bats with two hundred and one.

NEIU also rewrote the single season team record book. The Eagles offense and defense finished the year with two new records. The offense powered eighty-seven doubles which broke the old record of eighty-one while the defense turned a record forty-three double plays beating the old record of thirty-eight reached in 1981.

Two pitchers also finished their careers at NEIU with three new pitching records. Yovino finished his career with a record twenty-nine games started and pitched a record two hundred and twenty-seven innings. Henderson also broke a career record with twelve saves in his two year stint with the Eagles. Second baseman Mark Misiek finished his career with a .365 batting average which broke the old record of .346 hit in 1991.

Misiek, for his efforts, was named the team's most valuable player as he led the team in five different offensive categories. Pitchers Joe Golbeck and Yovino were named the team's most valuable pitchers. Golbeck finished the season with a record three wins and five losses in seventy-five innings of work. He finished the year with a team leading earned run average of under three. Yovino finished the season with a record of seven wins and six losses with an ERA of just under five.

The Golden Eagles ended the season with a team batting average of .303 while the pitching staff finished with an ERA of 5.46. The twenty wins for NEIU was the second highest team win total in Eagle Division I history.

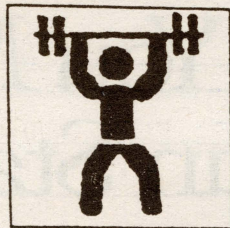


Tammy Smith / Independent

Get Yourself in Top Form



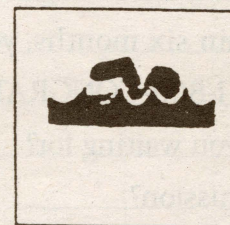
tennis



weight lifting



loader



swimming



aerobics

There are many ways to stay physically fit, but one offers full health benefits, students loans, paid vacations, and \$8 PER HOUR.

UPS Part-time loaders/unloaders

If you are able to lift up to 70 lbs. (35 lbs average weight of packages) and able to maintain a very fast pace, this opportunity is available to you. Our nonstop action will keep you in shape while you get valuable work experience.

Shift starts:

- 3:30 AM
- 5:00 PM
- *10:30 PM
- *Addison only
- No Weekends!

Monday-Friday, 3-5 hours per day

For information on employment in Chicagoland area

call 1(800)727-5560

24 hours 7 days a week

Representative
will be on campus

June 30

Village Square

9:00 A.M. to 1:00 P.M.



United Parcel Service
is an equal opportunity employer