

UNIVERSIDAD NACIONAL DE SAN AGUSTÍN DE AREQUIPA

FACULTAD DE INGENIERÍA DE PRODUCCIÓN Y SERVICIOS

ESCUELA PROFESIONAL DE INGENIERÍA DE SISTEMAS



DATA AUGMENTATION USING GENERATIVE ADVERSARIAL NETWORK FOR
GASTROINTESTINAL PARASITE MICROSCOPY IMAGE CLASSIFICATION

Tesis Formato Artículo presentado por
las Bachilleres:

Pacompia Machaca, Mila Yoselyn
Mayta Rosas, Milagros Lizet

Para optar el Título Profesional de:
Ingenieras de Sistemas

Asesor:

Mgter. Castro Gutierrez, Eveling Gloria

Arequipa - Perú

2021

Agradecimientos

Agradezco a Dios por permitirme estar aquí hoy e iluminar cada paso que doy.

A mis padres, mi madre Hermila por ser mi principal motivación y soporte incondicional a todos mis sueños, mi padre Roberto por ser mi apoyo ante las adversidades y brindarme la mejor herramienta para mi vida.

A mis hermanas Ana y Verónica por estar siempre presentes con su amistad y celebrar mis logros.

A Christian por alentarme constantemente a cumplir mis propósitos y concluir este trabajo.

A todas las personas partícipes, por su aporte reflejado en el trabajo.

Milagros Lizet Mayta Rosas

Agradezco a cada compañero y amigo que me ha impulsado a seguir mejorando y a trazar nuevos retos.

A mi familia, Alejandra, Victoriano y Carla, quienes me han apoyado en cada decisión que he tomado y me han alentado a no rendirme.

A mis profesores que me han enseñado e instruido para poder ser una buena profesional.

Mila Yoselyn Pacompia Machaca

A la Mg. Eveling Castro Gutierrez, por su asesoría, aporte y evaluación académica constante de nuestro trabajo.

A la Universidad Nacional de San Agustín, el Vicerrectorado de Investigación por el financiamiento. Proyecto denominado: Asistencia en el diagnóstico de parasitosis gastrointestinal mediante tasas de prevalencia y micrografías, utilizando visión computacional y computación de alto rendimiento aplicada a Arequipa IBA-BIOM-2018-1.

Al Centro de Investigación CiTeSoft: EC-0003-2017-UNSA por el equipamiento y los recursos aportados al desarrollo de nuestro trabajo.

PRESENTACIÓN

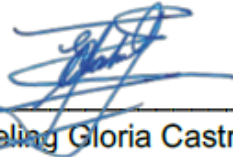
SEÑOR DECANO DE LA FACULTAD DE INGENIERÍA DE PRODUCCIÓN Y SERVICIOS

DR. Victor Hugo Cornejo Solorzano

SEÑOR DIRECTOR DE LA ESCUELA PROFESIONAL DE INGENIERÍA DE SISTEMAS

DR. Percy Oscar Huertas Niquen

De conformidad con las disposiciones vigentes del Reglamento de Grados y Títulos de la Facultad de Producción y Servicios, y de la Escuela Profesional de Ingeniería de Sistemas pongo a vuestra disposición la TESIS FORMATO ARTÍCULO, donde la señorita Mila Yoselyn Pacompia Machaca ha participado del artículo denominado "Data Augmentation using Generative Adversarial Network for Gastrointestinal Parasite Microscopy Image Classification" el cual ha sido presentado en "International Journal of Advanced Computer Science and Applications (IJACSA)", e indexada en la base de datos SCOPUS y publicada con fecha 1 de Diciembre del 2020, cuya aprobación le permitirá obtener el Título Profesional de Ingeniero de Sistemas.



Mgter. Eveling Gloria Castro Gutierrez

PRESENTACIÓN

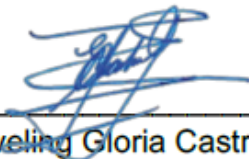
SEÑOR DECANO DE LA FACULTAD DE INGENIERÍA DE PRODUCCIÓN Y SERVICIOS

DR. Victor Hugo Cornejo Solorzano

SEÑOR DIRECTOR DE LA ESCUELA PROFESIONAL DE INGENIERÍA DE SISTEMAS

DR. Percy Oscar Huertas Niquen

De conformidad con las disposiciones vigentes del Reglamento de Grados y Títulos de la Facultad de Producción y Servicios, y de la Escuela Profesional de Ingeniería de Sistemas pongo a vuestra disposición la TESIS FORMATO ARTÍCULO, donde la señorita Milagros Lizet Mayta Rosas ha participado del artículo denominado "Data Augmentation using Generative Adversarial Network for Gastrointestinal Parasite Microscopy Image Classification" el cual ha sido presentado en "International Journal of Advanced Computer Science and Applications (IJACSA)", e indexada en la base de datos SCOPUS y publicada con fecha 1 de Diciembre del 2020, cuya aprobación le permitirá obtener el Título Profesional de Ingeniero de Sistemas.



Mgter. Eveling Gloria Castro Gutierrez

Resumen

Las enfermedades parasitarias gastrointestinales representan un problema latente en los países en desarrollo; es necesario crear herramientas de apoyo para el diagnóstico médico de estas enfermedades, se requiere automatizar tareas como la clasificación de muestras de los parásitos causantes obtenidas a través del microscopio utilizando métodos como el aprendizaje profundo. Sin embargo, estos métodos requieren grandes cantidades de datos. Actualmente, la recolección de estas imágenes representa un procedimiento complejo, importante consumo de recursos y largos períodos. Por tanto, es necesario proponer una solución computacional a este problema. En este trabajo se presenta un enfoque para generar conjuntos de imágenes sintéticas de 8 especies de parásitos, utilizando Redes Generativas Adversarias Convolucionales Profundas (DCGAN). Además, buscando mejores resultados, se aplicaron técnicas de mejora de imagen. Estos conjuntos de datos sintéticos (SD) fueron evaluados en una serie de combinaciones con los conjuntos de datos reales (RD) utilizando la tarea de clasificación, donde la mayor exactitud se obtuvo con el modelo Resnet50 pre-entrenado (99,2%), mostrando que el aumento de la RD con SD obtenido de DCGAN ayuda a lograr una mayor exactitud.

Palabras clave: Red Generativa Adversaria (GAN); Red Generativa Adversaria Convolutiva Profunda (DCGAN); parásitos gastrointestinales; clasificación; aprendizaje profundo.

Abstract

Gastrointestinal parasitic diseases represent a latent problem in developing countries; it is necessary to create a support tools for the medical diagnosis of these diseases, it is required to automate tasks such as the classification of samples of the causative parasites obtained through the microscope using methods like deep learning. However, these methods require large amounts of data. Currently, collecting these images represents a complex procedure, significant consumption of resources, and long periods. Therefore it is necessary to propose a computational solution to this problem. In this work, an approach for generating sets of synthetic images of 8 species of parasites is presented, using Deep Convolutional Adversarial Generative Networks (DCGAN). Also, looking for better results, image enhancement techniques were applied. These synthetic datasets (SD) were evaluated in a series of combinations with the real datasets (RD) using the classification task, where the highest accuracy was obtained with the pre-trained Resnet50 model (99,2%), showing that increasing the RD with SD obtained from DCGAN helps to achieve greater accuracy.

Key words: Generative Adversarial Network (GAN); Deep Convolutional Generative Adversarial Network (DCGAN); gastrointestinal parasites; classification; deep learning.

Publicación Indexada en SCOPUS

Impresión de Pantalla: Mila Yoselyn Pacompia Machaca | Autor

Link SCOPUS: [Artículo Scopus](#)

<input type="checkbox"/> All Request to merge authors	Author	Documents	<i>h</i> -index ⓘ	Affiliation	City	Country/Territory
<input type="checkbox"/> 1	Pacompia Machaca, Mila Yoselyn	1	0	Universidad Nacional de San Agustín de Arequipa	Arequipa	Peru
Hide last title ^						
Most recent document title: Data Augmentation using Generative Adversarial Network for Gastrointestinal Parasite Microscopy Image Classification						

Impresión de Pantalla: Milagros Lizet Mayta Rosas | Co-Autor

Link SCOPUS: [Artículo Scopus](#)

<input type="checkbox"/> All Request to merge authors	Author	Documents	<i>h</i> -index ⓘ	Affiliation	City	Country/Territory
<input type="checkbox"/> 1	Rosas, Milagros Lizet Mayta	1	0	Universidad Nacional de San Agustín de Arequipa	Arequipa	Peru
Hide last title ^						
Most recent document title: Data Augmentation using Generative Adversarial Network for Gastrointestinal Parasite Microscopy Image Classification						

Impresión de Pantalla: Eveling Gloria Castro Gutierrez | Co-Autor

Link SCOPUS: [Artículo Scopus](#)

<input type="checkbox"/> 2	Castro-Gutierrez, Eveling	2	0	Universidad Nacional de San Agustín de Arequipa	Arequipa	Peru
Hide last title ^						
Most recent document title: Data Augmentation using Generative Adversarial Network for Gastrointestinal Parasite Microscopy Image Classification						



Document details - Data Augmentation using Generative Adversarial Network for Gastrointestinal Parasite Microscopy Image Classification

1 of 1

[Export](#) [Download](#) [More...](#)

International Journal of Advanced Computer Science and Applications

Volume 11, Issue 11, 2020, Pages 765-771

Data Augmentation using Generative Adversarial Network for Gastrointestinal Parasite Microscopy Image Classification(Article)[Open Access](#)

Pacompia Machaca, M.Y., Rosas, M.L.M., Castro-Gutierrez, E., Diaz, H.A.T., Huerta, V.L.V.

Universidad Nacional de San Agustín de Arequipa Arequipa, Peru

Abstract

Gastrointestinal parasitic diseases represent a latent problem in developing countries; it is necessary to create a support tools for the medical diagnosis of these diseases, it is required to automate tasks such as the classification of samples of the causative parasites obtained through the microscope using methods like deep learning. However, these methods require large amounts of data. Currently, collecting these images represents a complex procedure, significant consumption of resources, and long periods. Therefore it is necessary to propose a computational solution to this problem. In this work, an approach for generating sets of synthetic images of 8 species of parasites is presented, using Deep Convolutional Adversarial Generative Networks (DCGAN). Also, looking for better results, image enhancement techniques were applied. These synthetic datasets (SD) were evaluated in a series of combinations with the real datasets (RD) using the classification task, where the highest accuracy was obtained with the pre-trained Resnet50 model (99,2%), showing that increasing the RD with SD obtained from DCGAN helps to achieve greater accuracy. © 2020. All Rights Reserved.

SciVal Topic Prominence

Topic: Object Detection | CNN | IOU

Prominence percentile: 99.998

Author keywords

[classification](#) [Deep Convolutional Generative Adversaria Network \(DCGAN\)](#) [deep learning](#) [gastrointestinal parasites](#)
[Generative Adversarial Network \(GAN\)](#)

ISSN: 2158107X

Source Type: Journal

Original language: English

DOI: 10.14569/IJACSA.2020.0111193

Document Type: Article

Publisher: Science and Information Organization

© Copyright 2021 Elsevier B.V., All rights reserved.

Cited by 0 documents

Inform me when this document is cited in Scopus:

[Set citation alert >](#) [Set citation feed >](#)

Related documents

Find more related documents in Scopus based on:

[Authors >](#) [Keywords >](#)

About Scopus

[What is Scopus](#)
[Content coverage](#)
[Scopus blog](#)
[Scopus API](#)
[Privacy matters](#)

Language

[日本語に切り替える](#)
[切换到简体中文](#)
[切换到繁體中文](#)
[Русский язык](#)

Customer Service

[Help](#)
[Contact us](#)

Data Augmentation using Generative Adversarial Network for Gastrointestinal Parasite Microscopy Image Classification

Mila Yoselyn Pacompia Machaca¹, Milagros Lizet Mayta Rosas², Eveling Castro-Gutierrez³,
Henry Abraham Talavera Díaz⁴ and Victor Luis Vasquez Huerta⁵

¹²³⁴⁵Universidad Nacional de San Agustín de Arequipa
Arequipa, Perú

Abstract—Gastrointestinal parasitic diseases represent a latent problem in developing countries; it is necessary to create a support tools for the medical diagnosis of these diseases, it is required to automate tasks such as the classification of samples of the causative parasites obtained through the microscope using methods like deep learning. However, these methods require large amounts of data. Currently, collecting these images represents a complex procedure, significant consumption of resources, and long periods. Therefore it is necessary to propose a computational solution to this problem. In this work, an approach for generating sets of synthetic images of 8 species of parasites is presented, using Deep Convolutional Adversarial Generative Networks (DCGAN). Also, looking for better results, image enhancement techniques were applied. These synthetic datasets (SD) were evaluated in a series of combinations with the real datasets (RD) using the classification task, where the highest accuracy was obtained with the pre-trained Resnet50 model (99,2%), showing that increasing the RD with SD obtained from DCGAN helps to achieve greater accuracy.

Keywords—Generative Adversarial Network (GAN); Deep Convolutional Generative Adversaria Network (DCGAN); gastrointestinal parasites; classification; deep learning

I. INTRODUCTION

Diseases caused by parasites are a public health problem on a global scale; they can be of high risk and high prevalence, as shown by their incidence rates in the population. According to the World Health Organization (WHO), the malaria disease caused by the Plasmodium parasite causes 400000 deaths per year [1], and more than 2 billion people are infected with soil-transmitted helminthiases. [2].

According to the National Institute of Health of Peru (INS), intestinal parasitism increased its prevalence rate among sectors with fewer resources [3]. Although the cases registered in the south of the country with a diagnosis of intestinal parasitism were more frequent in children or people in school age 41.75%, this problem also affects people in adulthood or youth, who also presented a considerable percentage of incidence in this disease with 20.45% and 35.09%, respectively [4].

Here is the importance of addressing this problem using computational methods to implement support systems for medical diagnosis, recognition, and classification of images obtained through the microscope. However, methods based on deep learning that have had excellent results in similar

applications require large datasets. The collection of medical data involves a lengthy procedure that may require applying different protocols and the intervention of a specialist. Therefore it is a task that represents a significant consumption of time and resources.

In this work, the application of two techniques for image enhancement is presented, Wiener and Wavelet, in order to obtain an improvement in the quality of the images; also, an approach to increase data is presented for the generation of synthetic training samples of microscopy images of eight species of gastrointestinal parasites, using DCGAN a variation of GAN [5], from a reduced initial dataset. In total, three sets of augmented data are generated resulting from the training of DCGAN, both for the dataset resulting from the application of image enhancement with Wiener filter, the dataset resulting from image enhancement with Wavelet denoising, and the original dataset without enhancement. The three datasets are used for training in classification models pre-trained by transfer learning, Resnet34, Resnet50, among others, independently to verify a performance improvement and compare the results obtained.

The article's structure is explained below: In Section II, related works are addressed, Section III describes the methodology used, to finish with the results and conclusions in Sections IV and V, respectively.

II. RELATED WORKS

According to the literature, various authors have applied deep learning in analyzing medical images [6], [7]. And in particular for the treatment of microscopy images of parasites [8], [9].

However, RD collection usually has a difficult and time-consuming procedure; this generates insufficient data for experimentation with deep learning methods for tasks such as image segmentation and classification. For this reason, some authors focus on increasing datasets for better results.

To address this problem in classifying in microscopy images of parasites, some authors used: The Python Augmentor library, [10], or traditional data augmentation techniques, [11]. On the other hand, due to the problems encountered when working with layered laser scanning microscopy image data, in [12] M. Bloice et. al, present their own software package: Augmentor which is a stochastic pipeline-based augmentation

library of images and includes features relevant to the domain of biomedical images, in order to ensure that the new data is meaningful.

In recent works, GANs have been used for the task of recognizing microscopic images of parasites [13], where through transfer learning, the authors intend to identify the parasite *Toxoplasma gondii* using Fuzzy Cycle Generative Adversarial Network (FCGAN) and in [10], where V. Fomene proposes a classifier for the diagnosis of malaria in rural areas using MobileNet and GAN.

GAN has even been used to the transfer between different modalities of microscopy images, as presented in [14], the authors investigate a conditional GAN in order to use the monitoring techniques of cells through the microscope: Phase Contrast (PC) and Differential Interference Contrast (DIC), passing from one to the other through the proposed algorithm. The focus of this work is to use GANs for the generation of data augmentation in order to face the problem of data deficiency for the application of deep learning models in tasks such as the segmentation [15], [16], and classification [17], [18], of microscopy images.

GANs have also been used to segmentation microscopic images of pluripotent retinal pigmented epithelial stem cells [19], where M. Majurski et al., use GAN in one of their approaches to optimize the coefficients of their Convolutional Neural Network (CNN). Some authors used Conditional GAN (CGAN), a conditional version of GAN, in which auxiliary information is fed to both the discriminator and the generator as an additional input layer [20]. This version was used to increase the dataset made up of polycrystalline iron images [15], where they also presented the transfer learning application with data fusion simulations obtained with the Monte Carlo Potts model and the image style information obtained from real images. CGAN was also used to increase the dataset of microscopic images of red blood cells [17]. The architecture that was proposed in [16], for the generation of the nuclei cell image-mask pair, consists of 2 stages where they first use a GAN to learn the data distribution of the masks and generate a synthesized binary mask and then incorporate this mask synthesized in the second GAN which also learns a mapping of the random noise vector to perform a conditional generation of the synthesized image.

On the other hand, Deep Convolutional GAN (DCGAN) has also been considered for data augmentation. DCGAN, which is a variation of GAN that uses convolutional layers in the discriminator and convolutional-transpose in the generator, where also the discriminator is composed of stridden convolution layers, batch norm layers, and LeakyReLU activations, and the generator is composed of convolutional-transpose layers, batch norm layers, and ReLU activations, [21].

R. Verma et al., present in [18], use DCGAN to generate synthetic samples of 5 classes of proteins, which were used in the classification task both before and after the increase of SD, comparing DCGAN results with those of traditional methods. In search of better results, some authors have modified the original structure of the GANs by including two discriminators [14]; it has also been considered to include U-net structural elements in their GANs [14], [19].

It has also tried to improve the quality of microscopic im-

ages as preprocessing before data augmentation, such as contrast enhancement with Histogram Equalization (HE), Adaptive Histogram Equalization (AHE), and Contrast Limited Adaptive Histogram Equalization (CLAHE) [18].

Some of the resulting augmented datasets have been evaluated in pre-trained deep learning models under a transfer learning approach, such as VGG, Resnet, NasNet, Inception, MobileNet. Because these have become popular in medical image classification and segmentation work [11], [13], [18].

The review of the related works shows that the use of GANs for data augmentation is competitive, performs well, or even outperforms traditional augmentation methods.

This work's contribution is a) the improvement of the quality of the dataset of microscopy images of eight species of gastrointestinal parasites with the Wiener and Wavelet filters, b) the use of DCGAN to augment the dataset by generating SD, and c) the resulting datasets for the training of deep learning pre-trained classification models by transfer learning and finally the comparison of the results obtained.

III. MATERIALS AND METHODS

For the development of this experimental research, a process that is applied in steps was defined. The proposed methodology consists of image preprocessing with improvement techniques, use of DCGAN for data augmentation, and evaluating synthetic datasets generated by classifying images with previously trained models using the transfer-based learning approach. In Fig. 1, the methodology of the approach for this work is detailed.

A. Dataset

The dataset consists of a vector of characteristics of each image to be trained. Microscopy images of parasites were used. There are a total of 954 images:

- Ascaris.
- Hookworms.
- Trichuris trichiura.
- Hymenolepis nana.
- Diphyllbothrium pacificum.
- Taenia solium.
- Fasciola hepatica.
- Enterobius vermicularis.

Each image from ground truth has 1200 x 1600 (height by width) and has three channels. A zoomed sample of each species of these parasites is presented in Fig. 2.

B. Image Enhancement

Two techniques were applied independently, Wiener filter and Wavelet denoising to improve the set of images.

1) *Wiener filter*: Wiener filter has been applied for image enhancement to reduce the additive noise and add variations in images. Wiener filter is one of the most known filters used for image enhancement [22].

2) *Wavelet denoising*: Wavelet denoising has been applied with the purpose to vary characteristics in the images [23].

Fig. 3, shows a sample of the results in terms of image enhancement.

C. Generative Adversarial Network

CNNs are designed for data with spatial structures, and they are composed of many filters, which convolve or slide through the data and produce an activation at each slide position. These activations produce a feature map representing how much the data in that region activated the filter.

On the other hand, GANs are a type of generative model because they learn to copy the data distribution of the data they give them. Therefore, they can generate novel images that look alike. A GAN is called an “adversary” because it involves two competing networks (adversaries) trying to outwit each other.

The generator (G) is a neural network, which takes a vector of random variables (Latent Space), and produces an image *igenerator*.

The discriminator (D) is also a neural network, which takes an image, *I*, and produces a single output *p*, deciding

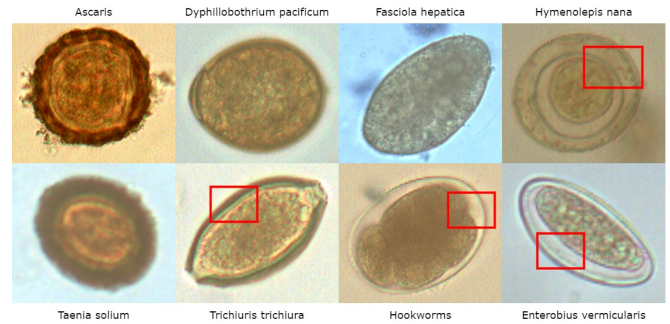


Fig. 2. Parasite species: A sample of each parasite species that is addressed in this work is presented, and special characteristics of the edges of these are highlighted in the red boxes. Hymenolepis nana has (from outside to inside) a wide rim, a semitransparent middle part, and an inner part with a texture similar to the outer ring. Trichiuris trichiura has different color intensities on edge. Hookworms have a semitransparent membrane with an irregular internal shape. Enterobius vermicularis has a semitransparent membrane with an internal oval shape.

the probability that the image is real. When $p = 1$, the discriminator strongly believes that the image is real, and when $p = 0$, the discriminator strongly believes that the image is false.

The discriminator (D) receives *igenerator*, and is taught that the image is false. In more concrete terms, the discriminator maximizes $\log(1 - p_{generator})$. The discriminator receives a real image, *ireal*, and is taught that the image is real, or maximizes $\log(p_{real})$.

The generator tries to do the exact opposite; it also tries to make the discriminator maximize the probability that it believes that the false image is real, so the generator will be trying to maximize $\log(p_{generator})$ [5].

As mentioned in Section II, a DCGAN uses convolutional layers in the discriminator (D) and convolutional-transpose layers in the generator (G). The discriminator, composed of strided convolution layers, batch norm layers, and LeakyReLU activations, receives an image and returns a scalar probability that it is from the distribution of real data.

The generator, consisting of convolutional-transpose layers, batch norm layers, and ReLU activations, receives a latent vector, *z*, which is extracted from a standard normal distribution and returns an RGB image [21].

D. Data Augmentation

DCGAN was used as part of the proposed methodology for the generation of synthetic images for data augmentation. For the DCGAN, binary cross-entropy is used as a loss function. And for discriminator and generator, Adam optimizers are applied with a learning rate of 0.0002. In Table I, DCGAN structure used for this work is detailed. A class called GAN is created. It imports the relevant classes and initializes the variables. A generator model was created with the following layers:

- Convolutional transpose 2D layer with an input of 100×100 image with 3 channels.
- Batch normalization: normalizes the data.

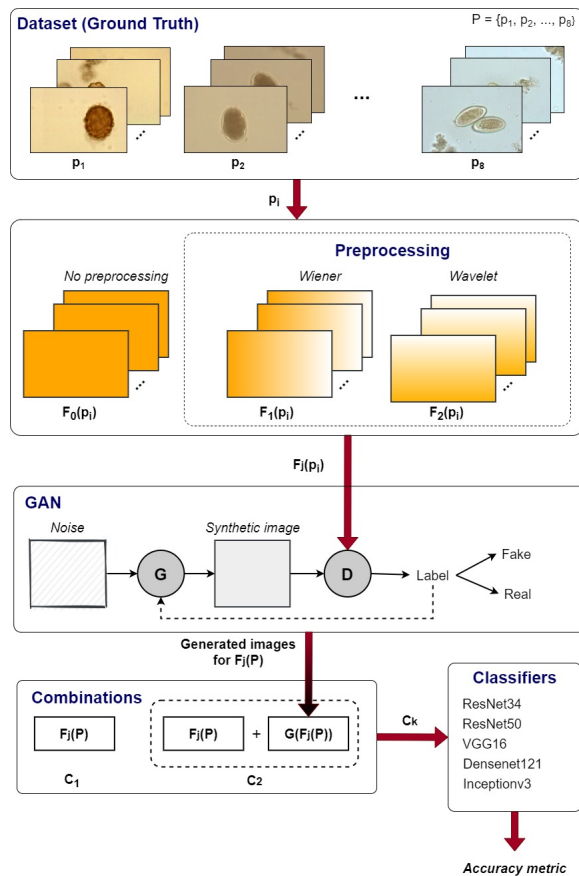


Fig. 1. Methodology. Top images should correspond to a specific species of parasite; then, it could be applied filter wiener or wavelet denoising as a preprocessing technique. After this, a DCGAN is able to generate images with one generator and one discriminator. Finally, ground truth and generated images are evaluated with classifiers Resnet34, Resnet50, and VGG. The process of data augmentation is applied independently for each parasite species.

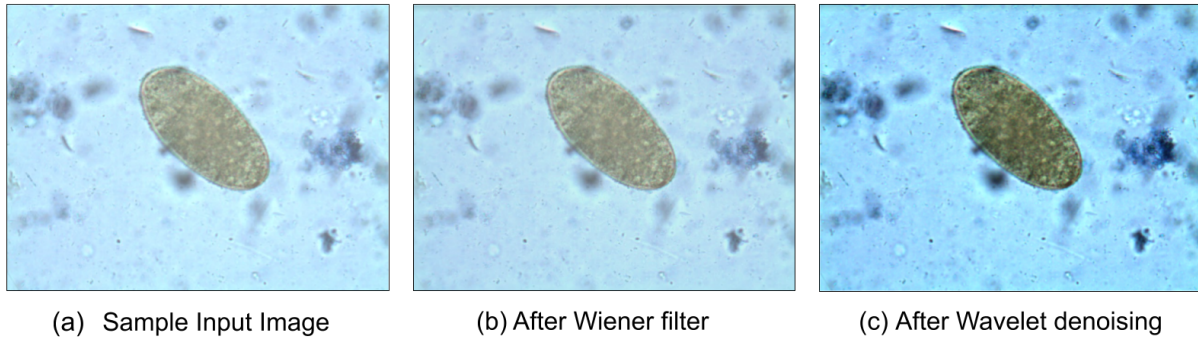


Fig. 3. Enhanced image samples. (a) Microscopy image of Fasciola hepatica parasite corresponding to the original dataset, (b) Image enhanced with Wiener filter, (c) Image enhanced with Wavelet denoising.

- ReLU.

These last three layers are repeated and make a block of four CBR (Convolutional Transposed 2D - Batch Normalization - ReLU) Finally, the following layers are applied:

- Convolutional transpose 2D
- Hyperbolic Tangent

A discriminator can also become a sequential model by going in the opposite direction. The discriminator was built as a model that is governed by the following directives:

- The first layer is for applying a convolution to a 64x64 image with 3 channels.
- Add a Leaky ReLU activation feature.

Then, the following three layers are applied:

- Convolution 2D
- Batch normalization 2D
- Leaky ReLU.

Finally, the following layers are applied to get the output decision:

- Convolution 2D
- Sigmoid

E. Evaluation

Classification task is defined to evaluate the synthetic microscopy image datasets generated by DCGAN. For this, the pre-trained deep learning models Resnet34, Resnet50, VGG16, Densenet121, and Inceptionv3 are used under a transfer learning approach.

1) *Accuracy*: The metric that was chosen to evaluate the models is Accuracy1.

$$Accuracy = \frac{\sum_c TP_c + FN_c}{\sum_c TP_c + TN_c + FP_c + FN_c} \quad (1)$$

TABLE I. DCGAN STRUCTURE

LAYER	DESCRIPTION
ConvTranspose2d	Applies a 2D transposed convolution operator over the image.
BatchNorm2d	Applies Batch Normalization over a 4D input.
ReLU	Applies the rectified linear unit function element-wise.
Tanh	Applies hyperbolic tangent function element-wise.
Conv2d	Applies a 2D convolution over an input signal composed of several input planes.
LeakyReLU	Applies leaky rectified linear unit function element-wise.
Sigmoid	Applies sigmoid function element-wise.

IV. EXPERIMENTATION AND RESULTS

A. Tools and technological infrastructure

For the experimentation, the following software tools were used: Python (libraries such as Pytorch, Numpy, Scipy, Scikit Image) and Cuda. The preprocessing, training and classification tasks were performed in a workstation with a processor Intel Xeon Gold 5115 CPU, Memory 128 GB, and a Video card Quadro P5000 16GB.

B. Data Augmentation Results

DCGAN was trained separately in isolation for each of the image sets for each mentioned parasite species. The average execution time for the datasets without any image enhancement considering 15000 epochs was 11 hours; the average execution time for the datasets improved with the Wiener filter, considering 15000 epochs was 8 hours. As for the data sets improved with the Wavelet denoising. Initially, 15000 epochs were considered. However, it had to be reduced to only 3000 epochs due to the long execution time that represented a high computational cost and the small number of images generated, obtaining an average of 7 hours, Fig. 4.

The numbers of synthetic images obtained in these runs were 612 for the datasets without image enhancement, 470 for the datasets enhanced with the Wiener filter, and 159 for the datasets enhanced with Wavelet denoising. These results

represent an increase of 65.88%, 50.59%, and 17.12%, over the original dataset, respectively. Fig. 5, shows the most significant amounts of synthetic images generated for each species of parasite.

According to [16], large-scale GAN imaging and training stability is challenging. The original size of the images 1200 x 1600 was kept for the training in DCGAN; the synthetic images obtained have allowed magnifying the domain, providing a greater training ground for the classification of parasites' species. Fig. 6, shows a data grid with 64 generated synthetic images.

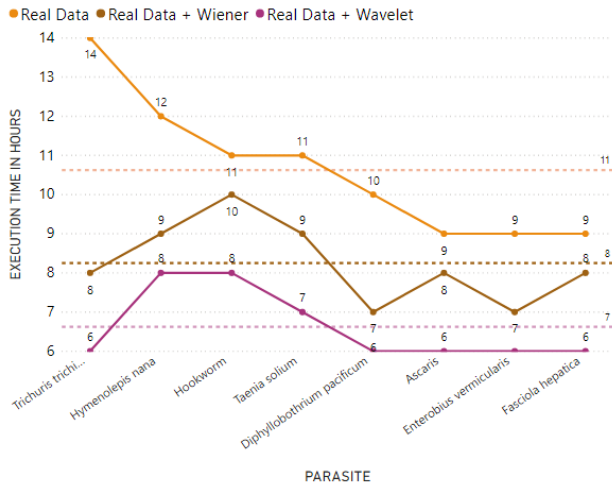


Fig. 4. Execution time for generating synthetic images in DCGAN

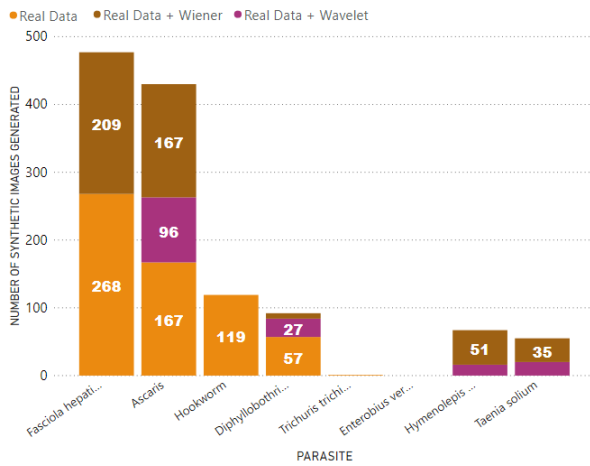


Fig. 5. Increment of the dataset. Real Data: Images generated from real data without enhancement. Real Data + Wiener: Images generated from real data enhanced with Wiener. Real Data + Wavelet: Images generated from real data enhanced with Wavelet.

C. Results and Discussion

It was decided to train model using Resnet34, Resnet50, VGG16, Densenet121, and Inceptionv3, independently, resizing the images from 1200 x 1600 to 64 x 64 to improve the results and to evaluate the datasets and get a comparative view of the accuracy metric, considering only 50 epochs, with the datasets: First, only with the original RD without any

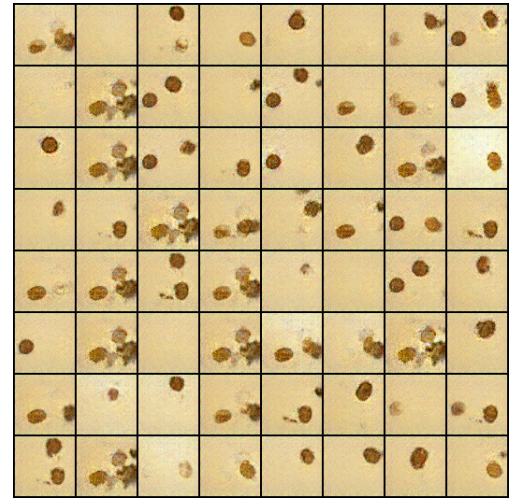


Fig. 6. Grid of synthetic images generated after 6000 epochs, parasite: Ascaris without image enhancement before DCGAN training.

preprocessing or image enhancement applied. Second, with the original RD without any preprocessing or image enhancement combined with the SD generated. Third, only with the RD obtained after applying the Wiener filter. Fourth, with the RD obtained after applying the Wiener filter combined with the SD generated from it. Fifth, only with the RD obtained after applying the Wavelet denoising and sixth, with the RD obtained after applying the Wavelet denoising combined with the SD generated from it.

The results can be seen in Table II. The best accuracy: 0.992 was obtained with the Resnet50 model, and the dataset: SD obtained after applying the Wiener filter + the RD. This shows that using SD in the image classification task improves the accuracy results.

According to the literature, no data augmentation works have been found for classification of microscopy images of the eight species of gastrointestinal parasites using DCGAN.

However, the use of different techniques was found, for objectives similar to those that have been raised in the present work. M. Roder et. al, present in [24], the use of Restricted Boltzmann Machines for data augmentation and the classification of helminth eggs using Deep Belief Networks, obtaining a balanced accuracy of 92.09%, the authors worked with grayscale microscopy images, while in this work RGB scale images were used.

The work of R. Verma et al. [18] is considered a similar methodology to that described in the present work. Verma used DCGAN for the generation of SD of 5 classes of proteins and also classification models based on transfer learning with which they obtained a result of 0.924 for the accuracy measure in VGG16 training. The best result in classification was obtained with the Resnet50 model with 0.992 for the accuracy measure in this work. It should be noted that in their work, the authors used different preprocessing techniques and datasets.

V. CONCLUSIONS

DCGAN was used to increase synthetic data, and the results generated were compared through the classification

TABLE II. CLASSIFICATION RESULTS.

Model	Classification Metric: Accuracy					
	No Dataset Enhancement		Dataset with Wiener filter		Dataset with Wavelet denoising	
	RD	RD + SD	RD	RD + SD	RD	RD + SD
ResNet34	0.619	0.974	0.978	0.978	0.935	0.990
ResNet50	0.989	0.961	0.967	0.992	0.978	0.930
VGG16	0.869	0.902	0.826	0.892	0.847	0.888
Densenet121	0.967	0.987	0.967	0.985	0.956	0.907
Inceptionv3	0.967	0.980	0.956	0.956	0.956	0.990

task so that greater precision was obtained with the Resnet50 model, with an accuracy of 0.992, and the dataset: RD + SD obtained after applying the Wiener filter. Other pr-trained models also showed similar results, such as Resnet34 and Inceptionv3, with an accuracy of 0.990, both with the dataset: RD + SD obtained after applying Wavelet denoising. Therefore, it is shown that the use of RD + SD provides greater accuracy in the classification compared to using only the RD.

The combinations of datasets that gave the best results with an average accuracy of 0.961 were: RD + SD obtained from the set of images without improvements and RD + SD obtained from the set of images improved with the Wiener filter.

The highest amount of SD generated from RD was obtained without improvements (612). On the other hand, the amount of SD obtained after applying both the Wiener filter (470) and the Wavelet denoising (159) was lower due to the characteristics of the images as it highlights impurities present in the samples.

Despite the complexity and computational cost of the DCGAN training stage, an accuracy of 99.2% was achieved. However, there is still room for improvement. In the future, it is intended to find preprocessing techniques that allow improving all image sets in order to generate quality synthetic images for the eight species of parasites. It is recommended to use techniques other than Wiener filter and Wavelet denoising for *Uncinaria*, *Trichiuris trichiura*, and *Enterobius vermicularis* parasites that highlight their morphological characteristics to obtain better samples of synthetic data.

ACKNOWLEDGMENT

The authors would like to thank the support and subvention of the UNIVERSIDAD NACIONAL DE SAN AGUSTÍN DE AREQUIPA to the Project called: Assistance in the diagnosis of gastrointestinal parasitosis through prevalence rates and micrographs, using high performance computational and computer vision applied to the Arequipa region with the contract No IBA-BIOM-2018-1. Thanks to the CiTeSoft Contract: EC-0003-2017-UNSA for the equipment and the resources bring to the project.

REFERENCES

[1] World Health Organization and others, "Malaria eradication: benefits, future scenarios and feasibility," 2020.
[2] World Health Organization and others, "Soil-transmitted helminthiasis: eliminating as public health problem soil-transmitted helminthiasis in children: progress report 2001-2010 and strategic plan 2011-2020," 2012.

[3] M. Beltrán, R. Tello, and C. Náquira, "Manual de procedimientos de laboratorio para el diagnóstico de los parásitos intestinales del hombre," 2003.
[4] G. Pajuelo Camacho, D. Lujan Roca, and B. Paredes Perez, "Estudio de enteroparásitos en el hospital de emergencias pediátricas, lima-perú." *Revista Médica Herediana*, vol. 16, no. 3, pp. 178-183, 2005.
[5] I. Goodfellow, J. Pouget-Abadie, M. Mirza, B. Xu, D. Warde-Farley, S. Ozair, A. Courville, and Y. Bengio, "Generative adversarial nets," *Advances in neural information processing systems*, pp. 2672-2680, 2014.
[6] G. Litjens, T. Kooi, B. E. Bejnordi, A. A. A. Setio, F. Ciompi, M. Ghafoorian, J. A. Van Der Laak, B. Van Ginneken, and C. I. Sánchez, "A survey on deep learning in medical image analysis," *Medical image analysis*, vol. 42, pp. 60-88, 2017.
[7] O. Z. Kraus, J. L. Ba, and B. J. Frey, "Classifying and segmenting microscopy images with deep multiple instance learning," *Bioinformatics*, vol. 32, no. 12, p. 52-59, 2016.
[8] A. Peixinho, S. Martins, J. Vargas, A. Falcao, J. Gomes, and C. Suzuki, "Diagnosis of human intestinal parasites by deep learning," *Computational Vision and Medical Image Processing V: Proceedings of the 5th Eccomas Thematic Conference on Computational Vision and Medical Image Processing (VipIMAGE 2015, Tenerife, Spain)*, p. 107, 2015.
[9] J. A. Quinn, R. Nakasi, P. K. Mugagga, P. Byanyima, W. Lubega, and A. Andama, "Deep convolutional neural networks for microscopy-based point of care diagnostics," in *Machine Learning for Healthcare Conference*, 2016, pp. 271-281.
[10] V. Fomene, "Developing a machine learning model for malaria diagnosis in rural areas," 2018.
[11] M. M. Aladago, "Classification and quantification of malaria parasites using convolutional neural networks," 2018.
[12] M. D. Bloice, P. M. Roth, and A. Holzinger, "Biomedical image augmentation using augmentor," *Bioinformatics*, vol. 35, no. 21, pp. 4522-4524, 2019.
[13] S. Li, A. Li, D. A. M. Lara, J. E. G. Marín, M. Juhas, and Y. Zhang, "A novel transfer learning approach for toxoplasma gondii microscopic image recognition by fuzzy cycle generative adversarial network," *bioRxiv*, pp. 567-891, 2019.
[14] L. Han and Z. Yin, "Transferring microscopy image modalities with conditional generative adversarial networks," in *Proceedings of the IEEE Conference on Computer Vision and Pattern Recognition Workshops*, 2017, pp. 99-107.
[15] B. Ma, X. Wei, C. Liu, X. Ban, H. Huang, H. Wang, W. Xue, S. Wu, M. Gao, Q. Shen *et al.*, "Data augmentation in microscopic images for material data mining," *npj Computational Materials*, vol. 6, no. 1, pp. 1-9, 2020.
[16] S. Pandey, P. R. Singh, and J. Tian, "An image augmentation approach using two-stage generative adversarial network for nuclei image segmentation," *Biomedical Signal Processing and Control*, vol. 57, p. 101782, 2020.
[17] O. Bailo, D. Ham, and Y. Min Shin, "Red blood cell image generation for data augmentation using conditional generative adversarial networks," in *Proceedings of the IEEE Conference on Computer Vision and Pattern Recognition Workshops*, 2019.
[18] R. Verma, R. Mehrotra, C. Rane, R. Tiwari, and A. K. Agariya, "Synthetic image augmentation with generative adversarial network for enhanced performance in protein classification," *Biomedical Engineering Letters*, vol. 10, no. 3, pp. 443-452, 2020.
[19] M. Majurski, P. Manescu, S. Padi, N. Schaub, N. Hotaling, C. Simon Jr, and P. Bajcsy, "Cell image segmentation using generative adversarial networks, transfer learning, and augmentations," in *Proceedings of the IEEE Conference on Computer Vision and Pattern Recognition Workshops*, 2019.
[20] M. Mirza and S. Osindero, "Conditional generative adversarial nets," *arXiv preprint arXiv:1411.1784*, 2014.
[21] A. Radford, L. Metz, and S. Chintala, "Unsupervised representation learning with deep convolutional generative adversarial networks," *arXiv preprint arXiv:1511.06434*, 2015.
[22] R. K. B. Vijayalakshmi A, "Deep learning approach to detect malaria from microscopic images." *Multimedia Tools and Applications*, vol. 79, p. 15297-15317, 2019.

- [23] A. M. Wink and J. B. T. M. Roerdink, "Denoising functional mr images: a comparison of wavelet denoising and gaussian smoothing," *IEEE Transactions on Medical Imaging*, vol. 23, no. 3, pp. 374–387, 2004.
- [24] M. Roder, L. A. Passos, L. C. F. Ribeiro, B. C. Benato, A. X. Falcão, and J. P. Papa, "Intestinal parasites classification using deep belief networks," in *International Conference on Artificial Intelligence and Soft Computing*. Springer, 2020, pp. 242–251.