

Turbulence/outflows perpendicular to low-power jets in Seyfert galaxies†

Giacomo Venturi^{1,2}, Alessandro Marconi^{3,2}, Matilde Mingozi⁴, Giovanni Cresci², Stefano Carniani^{5,2} and Filippo Mannucci²

¹Instituto de Astrofísica, Pontificia Universidad Católica de Chile,
Avda. Vicuña Mackenna 4860, 8970117, Macul, Santiago, Chile
email: gventuri@astro.puc.cl

²INAF - Osservatorio Astrofisico di Arcetri, Largo E. Fermi 5, I-50125, Firenze, Italy

³Dipartimento di Fisica e Astronomia, Università degli Studi di Firenze, Via G. Sansone 1,
I-50019, Sesto Fiorentino, Firenze, Italy

⁴INAF - Osservatorio Astronomico di Padova, Vicolo dell'Osservatorio 5, 35122, Padova, Italy

⁵Scuola Normale Superiore, Piazza dei Cavalieri 7, I-56126 Pisa, Italy

Abstract. We present recent results from our MAGNUM survey of nearby active galactic nuclei (AGN), which exploits observations from the optical/near-IR integral field spectrograph MUSE at VLT. We detect strongly enhanced line widths in emission line maps of four galaxies perpendicularly to their low-power jets and AGN ionisation cones, indicative of turbulent/outflowing material. The observation of a similar phenomenon in other works suggests that it originates from an interaction mechanism between the jet and the galaxy disc through which it propagates.

Keywords. galaxies: jets, galaxies: Seyfert, galaxies: individual (IC 5063, NGC 5643), galaxies: ISM, galaxies: kinematics and dynamics, techniques: spectroscopic

1. Introduction

Ionised outflows are routinely observed in active galactic nuclei (AGN), either powered by the strong AGN radiation pressure or by powerful jets (see e.g. [Fabian 2012](#)).

Here we focus on new results from our 10-to-100 pc spatially-resolved MAGNUM survey (Measuring Active Galactic Nuclei Under MUSE Microscope) of nearby AGN (e.g. [Venturi et al. 2017, 2018](#); [Mingozi et al. 2019](#)) observed with the optical and near-IR integral field spectrograph MUSE at VLT ([Bacon et al. 2010](#)), revealing a peculiar phenomenon in objects hosting low-power jets.

2. Turbulence/outflows perpendicular to low-power jets

In [Fig. 1](#) we present MUSE maps of two Seyfert galaxies from our survey, IC 5063 and NGC 5643. Here, while the high bulk velocity gas (panels b and e) indicates an outflow in the direction of the AGN ionisation cones (traced by [O III], panels a and d), as normally expected in AGN (e.g. [Fischer et al. 2013](#)), a strongly enhanced line velocity width ($\gtrsim 800$ km/s; panels c and f), indicating turbulent/outflowing motions with low bulk velocity, is observed instead perpendicularly to the ionisation cones and radio jets (black contours in panels c and f). We detect this phenomenon in two other galaxies of

†Based on observations made with ESO Telescopes at the La Silla Paranal Observatory under program IDs 094.B-0321(A), 60.A-9339(A), 095.B-0532(A).

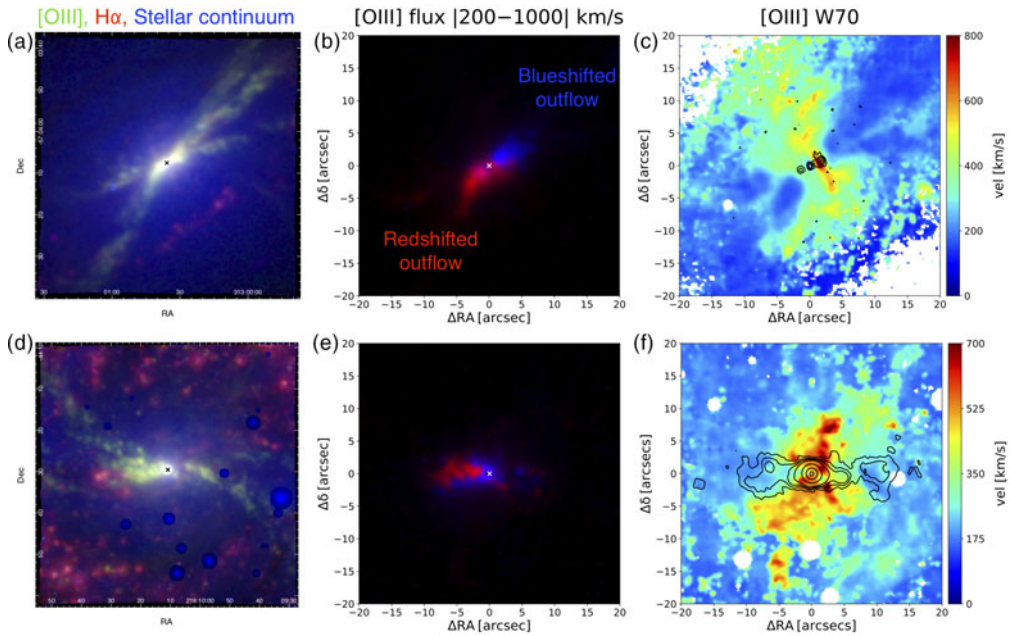


Figure 1. VLT/MUSE maps of IC 5063 (top) and NGC 5643 (bottom). a) and d) Flux maps of ionised gas, $[O\ III]\lambda 5007$ (green) and $H\alpha$ (red), and stellar continuum (blue). b) and e) Bulk of the high-velocity outflow, traced by the flux of $[O\ III]$ line profile integrated in the velocity range $\pm|200-1000|$ km/s (blue if approaching, red if receding) with respect to the stellar velocity in each spaxel (to exclude contributions from gas rotating in the disc). c) and f) $[O\ III]$ W70 line velocity width map (i.e difference between the 85th- and 15th-percentile velocities of the line profile), with radio jet contours superimposed, ATCA 17.8 GHz from Morganti *et al.* (2007) for IC 5063, 8.4 GHz VLA from Leipski *et al.* (2006) for NGC 5643.

our sample, NGC 1068 and NGC 1386. We note that all the four mentioned galaxies host a low-power radio jet with low inclinations to galaxy disc.

3. Discussion and Conclusions

We have shown MUSE emission-line maps of two nearby Seyfert galaxies from our MAGNUM survey, which - together with two other sources of the sample - exhibit enhanced line velocity widths perpendicularly to their low-power radio jets and ionisation cones, indicative of turbulent/outflowing motions. A similar phenomenon has been reported in other recent works also in galaxies hosting jets lying low onto the galaxy disc (e.g. Shin *et al.* 2019). This suggests that the jets, through the interaction with the gas in the disc, are responsible for generating the observed perpendicular turbulence/outflow. Moreover, our results confirm that not only powerful jets in “radio loud” objects (e.g. Nesvadba *et al.* 2008) are capable of affecting the gas in the host, but also low-power jets residing in “radio quiet” galaxies, as indicated by recent works (e.g. Jarvis *et al.* 2019).

References

Bacon, R., Accardo, M., Adjali, L., *et al.* 2010, *Proc. SPIE*, 7735, 773508
 Fabian, A. C. 2012, *ARA&A*, 50, 455
 Fischer, T. C., Crenshaw, D. M., Kraemer, S. B., *et al.* 2013, *ApJS*, 209, 1
 Jarvis, M. E., Harrison, C. M., Thomson, A. P., *et al.* 2019, *MNRAS*, 485, 2710
 Leipski, C., Falcke, H., Bennert, N., *et al.* 2006, *A&A*, 455, 161
 Mingozi, M., Cresci, G., Venturi, G., *et al.* 2019, *A&A*, 622, A146

- Morganti, R., Holt, J., Saripalli, L., *et al.* 2007, *A&A*, 476, 735
Nesvadba, N. P. H., Lehnert, M. D., De Breuck, C., *et al.* 2008, *A&A*, 491, 407
Shin, J., Woo, J.-H., Chung, A., *et al.* 2019, *ApJ*, 881, 147
Venturi, G., Marconi, A., Mingozzi, M., *et al.* 2017, *Front. Astron. Space Sci.*, 4, 46
Venturi, G., Nardini, E., Marconi, A., *et al.* 2018, *A&A*, 619, A74