

## Optimized conversion of wheat straw into single cell oils by *Yarrowia lipolytica* and *Lipomyces tetrasporus* and synthesis of advanced biofuels

Antonio Caporusso<sup>a, b</sup>, Isabella De Bari<sup>a, \*</sup>, Federico Liuzzi<sup>a</sup>, Roberto Albergo<sup>a</sup>, Vito Valerio<sup>a</sup>, Egidio Viola<sup>a</sup>, Rocchina Pietrafesa<sup>b</sup>, Gabriella Siesto<sup>b</sup>, Angela Capece<sup>b</sup>

<sup>a</sup> Italian National Agency for New Technologies, Energy and Sustainable Economic Development (ENEA), Laboratory for Processes and Technologies for Biorefineries and Green Chemistry, ENEA C.R. Trisaia S.S. 106 Jonica, 75026, Rotondella, MT, Italy

<sup>b</sup> School of Agricultural, Forest, Food and Environmental Sciences, University of Basilicata, Viale dell'Ateneo Lucano 10, 85100, Potenza, Italy

### ARTICLE INFO

#### Article history:

Received 6 July 2022

Received in revised form 12 October 2022

Accepted 14 November 2022

#### Keywords:

Wheat straw  
Oleaginous yeasts  
Stress tolerance  
Biodiesel  
Biorefinery

### ABSTRACT

This paper deals with the optimized conversion of undetoxified wheat straw hydrolysates into microbial lipids by two oleaginous yeasts, *Yarrowia lipolytica* and *Lipomyces tetrasporus*. Wheat straw were pretreated by steam explosion at 203 °C for 300 s and hydrolysed at 20% solid-to-liquid ratio by using an enzymatic loading of 15 FPU/g substrate. The mixed wheat straw hydrolysates (WSH) contained 86 gL<sup>-1</sup> glucose and 22 gL<sup>-1</sup> xylose, 2.3 gL<sup>-1</sup> acetic acid, 0.9 gL<sup>-1</sup> furanic compounds. The fermentation process was optimized in terms of the inoculum age and density, medium composition and bioreactor feeding strategy. In particular, the different capacity of the two yeasts to overcome the toxic effect of the biomass degradation by-products in different inoculum ages was deeply investigated. Two hydrolysates concentration were tested: WSH containing 86 glucose and 22 xylose and the diluted medium containing 40 glucose and 22 xylose. The results indicated that both yeasts were able to detoxify WSH and grow on undetoxified hydrolysates as effect of the intrinsic capacity to metabolize the furan derivatives. *Y. lipolytica* was able to detoxify the medium in all the investigated set-ups, while *L. tetrasporus* was able to detoxify the medium only if inoculated in the stationary phase of growth. After the process optimization in shaken flasks, the production of SCO by *L. tetrasporus* was carried out in a medium-scale bioreactor of 10L obtaining lipid yield and cell content of 21% and 62%, respectively. The extracted SCOs, with high oleic and palmitic acid content, were converted into biodiesel displaying overall features in accordance with international biodiesel standards, namely ASTM and EN 14214.

© 20XX

### Nomenclature

WSH	Wheat Straw Hydrolysate
WSH	80 High sugars medium
WSH	40 Low sugars medium
SP	Stationary Phase
EP	Exponential Phase
SCOs	Single Cell Oils
DCW	Dry Cell Weight
FAs	Fatty Acids
PUFAs	Polyunsaturated Fatty Acids
FAMES	Fatty Acids Methyl Esters
SYN	Synthetic Medium
5-HMF	5-Hydroxymethylfurfural
HCV	High Calorific Value
LCV	Low Caloric Value
CN	Cetane Number

IV	iodine Value
CFPP	Cold-Filter Plugging Point

### 1. Introduction

Due to the growing world population, the demand for global energy, food, and water is ever increasing. This has led to massive exploitation of natural resources with many environmental impacts. A paradigm shift toward more sustainable use of resources is therefore needed. In this framework, the replacement of petroleum-based compounds with renewable feedstocks is desirable [1]. The European energy directive on renewable energies, RED II, limits the use of feedstocks in competi-

\* Corresponding author.

E-mail address: [isabella.debari@enea.it](mailto:isabella.debari@enea.it) (I. De Bari).

tion with food chain and promotes the use of residual biomass and wastes to produce advanced biofuels [2]. Microbial oils, better known as Single Cell Oils (SCOs) are regarded as a promising raw material for the sustainable production of biofuels and chemicals due to their fatty acid composition similar to those of vegetable oils commonly used in industry [3]. Furthermore, biodiesel from microbial lipids is a particularly promising technology as it is sulfur-free, nontoxic, biodegradable [4] and its combustion emits 67% less hydrocarbon, 48% less CO<sub>2</sub>, and 47% less particulate matter than petroleum diesel [5]. SCOs are produced by oleaginous microorganisms such as yeasts, bacteria, fungi, and microalgae. The yeasts are among the most promising microorganisms for the production of oils since, depending on the feedstocks, they can accumulate lipids up to more than 70% of their dry cell weight, have high growth rates, are easily cultivable, and use less land and water than vegetable oils [6]. Furthermore, oleaginous yeasts can grow on several carbon sources, such as simple sugars (e.g. glucose and fructose), lactose, sucrose [7], whey [8], volatile fatty acids [9], and industrial waste [10].

Due to the high production cost of SCOs, about 4.24 \$/kg [11], only SCO with high polyunsaturated fatty acids were produced so far at the industrial scale, while the industrial production for biofuels or green chemistry applications is far behind [12].

The carbon source is an important cost item in determining the overall lipids production cost. In this sense, it is expected that the utilization of renewable low-cost feedstocks, along with an increased bioconversion performance, boosts the economic value of the SCO production process [13]. Several types of waste and low-cost carbon sources, including olive mill wastewater, by-products of the dairy industry, and food processing, have been used as feedstock to produce microbial lipids [12]. Lignocellulosic biomasses hold many advantages since they are abundant and many technologies are available to convert them into sugars. Due to their recalcitrant nature, lignocellulosic biomasses require pre-treatments to favour the breakdown of the lignin structural matrix and favour the subsequent enzymatic hydrolysis of polysaccharides to fermentable sugars. Biomass pretreatment followed by enzymatic hydrolysis leave an unconverted lignin residue, hydrolytic lignin, that can be valorised for the production of several green chemicals including carbon fibres, aromatic monomers, phenolic resins and polyols [14]. One of the main problems related to the use of lignocellulosic sugars for microbial conversion is the concentration of toxic compounds generated during the pre-treatment process, mostly 5-hydroxymethylfurfural (5-HMF), furfural, and acetic acid and lignin derived compounds. These compounds could inhibit yeast growth and affect lipid synthesis, therefore, purification processes are required [15]. Previous investigations demonstrated that in many microorganisms the growth phase of inoculum could importantly affect the yeast tolerance [16,17]. This was never investigated so far for oleaginous yeasts.

The present paper was aimed at the conversion of undetoxified wheat straw hydrolysate into SCO by two oleaginous yeasts, *Lipomyces tetrasporus* and *Yarrowia lipolytica*. *Y. lipolytica* was chosen as control strain as it is characterized by flexible metabolism, high-stress tolerance, versatility of growth on different sources of C, and its GRAS status (generally recognized as safe) [18]. As regards *L. tetrasporus*, it has been less investigated than other yeasts despite its interesting potential for lipids accumulation [16]. The fermentation process was optimized in terms of the inoculum age, medium composition and bioreactor feeding strategy. After the process optimization in shaken flasks, the production of SCO by *L. tetrasporus* was carried out in a medium-scale bioreactor and the extracted SCO were used to produce biodiesel.

## 2. Materials and methods

### 2.1. Yeast strains and pre-inoculum preparation

*Lipomyces tetrasporus* Li-0407 (DSM 70314, DSMZ, Germany) and *Yarrowia lipolytica* ATCC 46483 (DSM 8218, DSMZ, Germany) were purchased from the Leibniz Institute DSMZ-German Collection of Microorganisms and Cell Cultures. The yeasts were preserved on YPD agar slant (Sigma-Aldrich) at 4 °C and sub-cultured every week. The pre-inoculum was prepared by inoculating a loopful of each strain into 100 mL YPD Broth in 500 mL-Erlenmeyer flasks, and incubated at 27 °C under agitation (200 rpm). For the evaluations of influence of the metabolic phase of inoculum, each yeast was harvested, on the basis of previous test (data not shown), in exponential phase (48 h for *Y. lipolytica* and 70 h for *L. tetrasporus*) and at the beginning of the stationary phase (96 h for *Y. lipolytica* and 120 h for *L. tetrasporus*). After incubation a precise volume of cell suspension, evaluated by spectrophotometric quantification at 600 nm, was transferred to achieve the desired initial cells concentration of  $3.6 \times 10^6$  and  $6.2 \times 10^6$  CFU/mL, corresponding to OD 5 and OD 10. The growth media were sterilized (121 °C, 15 min) before inoculation.

### 2.2. Growth in synthetic media

In the first step, *Lipomyces tetrasporus* and *Yarrowia lipolytica* were grown on 2 synthetic media (SYN 40 and SYN 80), with same chemical composition, with exception of sugar concentration (low and high-sugar medium, respectively). The SYN media was prepared with a carbohydrate composition similar to the WSH but without the inhibiting compounds. The culture media composition (SYN 80) was the following: glucose 86.4 gL<sup>-1</sup>, xylose 22.1 gL<sup>-1</sup>, galactose 0.9 gL<sup>-1</sup>, arabinose 1.7 gL<sup>-1</sup>, yeast extract 4.75 gL<sup>-1</sup>, MgSO<sub>4</sub>•7H<sub>2</sub>O 1.5 gL<sup>-1</sup>, MnSO<sub>4</sub>•H<sub>2</sub>O 0.004 gL<sup>-1</sup>, CuSO<sub>4</sub>•5H<sub>2</sub>O 0.001 gL<sup>-1</sup>, KH<sub>2</sub>PO<sub>4</sub> 2 gL<sup>-1</sup>, Na<sub>2</sub>HPO<sub>4</sub> 0.3 gL<sup>-1</sup>, and ZnSO<sub>4</sub> 0.04 gL<sup>-1</sup> (Sigma Aldrich, Italy). SYN 40 showed a glucose concentration halved compared to SYN 80, equal to 40.2 gL<sup>-1</sup>. For all tests, the initial C/N ratio was kept at 85 mol/mol, pH was set at 5.5 and was not adjusted through the fermentation. Temperature and stirring were set at 27 °C and 200 rpm, respectively. All the experiments were conducted in triplicate.

### 2.3. Characterization and pretreatment of wheat straw

The wheat straw was collected from agricultural sites in Southern Italy. The residues were divided into stocks of around 10 kg and stored indoors. Prior to the pretreatment, the biomass had a dry matter content of  $91.9 \pm 0.2\%$ . After grinding at 50 mesh, air-dried wheat straw was analysed for extractives, carbohydrate, lignin, and ash content by the methods developed by Ref. [19]. The raw material contained (%):  $38.4 \pm 3.2$  glucan,  $16.7 \pm 1.1$  xylan,  $3.1 \pm 0.2$  arabinan,  $1.2 \pm 0.1$  galactan,  $20.6 \pm 1.1$  acid-insoluble lignin,  $6.2 \pm 0.1$  ash,  $4.3 \pm 0.3$  extractives. To clarify the components of the hydrolysate, the hydrolysate was estimated by HPLC (DIONEX ICS2500, Germany) system equipped with a Nucleogel Ion 300 OA operating at 60 °C with 10 mN H<sub>2</sub>SO<sub>4</sub> solution as mobile-phase (0.4 mL min<sup>-1</sup>). The detector was a Shodex RI101 refractive index. Each analysis was carried out in duplicate.

The biomass degradation by-products were quantified using the HP1100 system (Agilent, USA), equipped with a RP18 5 μm LiChroCart 250 × 4mm (Agilent, USA) column operating at 50 °C with Milli-Q-water/acetonitrile as mobile-phase (1 mL min<sup>-1</sup>) and a diode array detector. Quantification was carried out at two different wavelengths, 210 and 280 nm.

Steam explosion has been recognized as one of the most effective and versatile pre-treatments for the fractionation of biomass into fermentable sugars and residual lignin, also through the use of acid or base

catalysts. The process conditions for the pretreatment of wheat were based on previous papers with similar set-up [20]. In particular, before the pretreatment, biomass was crumbled to particles size in the range 1.7–5.6 mm and was soaked in a dilute H<sub>2</sub>SO<sub>4</sub> solution (0.05 M) for 10 min in 10% s/L (w/v) suspension. The resulting acid load on raw material was measured following titration of the impregnation liquid and was found to be 1.4% (w/w). The pretreatment was carried out at 203 °C for 5 min similarly to process parameters optimized by other authors during the acid catalysed SE of wheat straw in order to obtain a high hydrolyzability of the cellulose [21,22]. The pretreated product was filtered in order to separate the solids from the soluble fraction, containing mainly hemicellulose. The composition of the pretreated product, consisting of a solid fraction rich in cellulose and a liquid fraction containing soluble hemicellulose, was quantified according to Ref. [19]. Due to the steam condensation, biomass after the pretreatment had high moisture content. It was then squeezed to separate the solids and after that remixed up to achieve the target solids concentration of 20% for the enzymatic hydrolysis.

#### 2.4. Enzymatic hydrolysis of the pretreated wheat straw

The enzymatic hydrolysis of the pretreated wheat straw was carried out in a 10 L stirred bioreactor (Braun Biotech International, Germany) equipped with a helical impeller. Cellic™ CTec2, kindly provided by Novozymes (Denmark) was added in a dosage of 15 FPU per gram of insoluble glucan. The filter paper activity of the enzymatic blend was 190 filter paper unit (FPU)/g, determined according to the Ghose method [23]. The biomass slurry was hydrolysed at pH 4.8, 50 °C, 180 rpm for 90 h. The temperature was then raised at 100 °C for few minutes to denature the enzymatic proteins. A cellulose conversion of around 90% was obtained. Hydrolysate was then added with a solution of nutrients and sterilized through membrane filtration (0.22 µm). The sterilized solution was inoculated with yeast for the fermentative processes.

#### 2.5. Up-scaling of bioconversion process in 10 L bioreactor

The production of SCO was scaled-up by using a 10 L stirred tank bioreactor; this step was performed by inoculating *L. tetrasporus* strain and by using growth conditions optimized in the first phases. The pH was set at 5.5 and was then automatically adjusted through the addition of NaOH 4N and H<sub>2</sub>SO<sub>4</sub> 4M. The dissolved oxygen concentration was maintained at least above 40% through the stirring speed and air flow. The process was carried out in the fed-batch mode. The initial working volume was 6500 mL, subsequently increased to 7500 mL after the addition of two concentrated feeds of 500 mL each. To avoid medium dilution during the fed-batch operations, hydrolyzate was concentrated in a laboratory vacuum system at 7 kPa, 180 rpm, and 60 °C for 5 h, reducing a volume of 13.5 L added with microelements to a final volume of 1000 mL.

#### 2.6. Lipids extraction and Fatty acids methyl esters (FAMES) determination

Lipid extraction from yeast biomass recovered at the end of bioconversion processes was performed using the protocol previously described [16].

According to the method of [24], the microbial lipids were trans-methylated. The methyl esters profiles were determined by GC analyses carried out on Agilent GC7890A gas chromatograph, equipped with OMEGAWAX 250 (Agilent) capillary column (30 m × 0.32 mm × 0.50 µm) and a flame ionization detector. The oven temperature was programmed at 80 °C for 11 min, from 80 °C to 180 °C at a rate of 20 °C/min and held at 180 °C for 22 min. Helium was the carrier gas (1 mL min<sup>-1</sup>). Split ratio was 1:19 (v/v). Identification of methyl esters was performed comparing the peaks retention times to FAMES standards mix, C8–C24 (CRM 18918 Sigma-Aldrich).

Glyceryl triundecanoate was used as internal standard for evaluating the extraction yields of the lipids while methyl heptadecanoate was used as internal standard for the quantification of FAME by chromatographic analysis.

#### 2.7. Biodiesel synthesis and characterization

The lipid obtained above was transformed into biodiesel according to the classical transesterification method [25]. In brief, 50 g of the oven dried (60 °C overnight) microbial oil were mixed with 10 g NaOH-methanol solution (MeO-/MeOH 0.05:1) and placed in a magnetic agitator at 300 rpm at 60 °C for 60 min. The resulting organic phase was separated by centrifugation at 9000g for 10 min and subsequently washed for three times with hot water, after that the mixture was maintained in an oven at 50 °C overnight. The obtained organic phase was used as microbial biodiesel. The FAME profile was analysed according paragraph 2.6.2. Density (ρ) was measured with a density meter Anton-Paar (model DMA48). Kinematic viscosity (ν) of biodiesel was determined using the manual calibrated glass capillary viscometer Cannon Fenske S490 size 75, at 40.00 °C (UNI-EN-ISO 3104–2000).

The water content was determined by a Karl–Fischer automatic Titrator Mettler DL18 (EN ISO 12937–2000). High calorific value (HCV) was analysed using a calorimeter bomb (IKAC5000).

Low calorific value (LCV) was calculated from HCV using the Du-long equation according to Ref. [26]:

$$LCV = HCV - (22.5 * H \% / 100)$$

where H% is the relative percentage hydrogen in the biodiesel determined by elementary analysis (VARIO MACRO CUBE). Iodine Value (IV), Cetane number (CN) and cold filter plugging point (CFPP) were calculated using semi-empirical formulas as reported in Viola et al. [27], expression.

#### 2.8. Process yields calculation

The different process yields were calculated by the following equations:

- 1) DCW yield: gram of dry cell weight per gram of sugar consumed \* 100;
- 2) Lipid yield: gram of lipids produced per gram of sugar consumed \* 100;
- 3) Productivity: gram liter of biomass produced per time of process;
- 4) Lipid content: gram of lipids produced per gram of dry cell weight \* 100;
- 5) Mannitol yield: gram of mannitol produced per gram of sugar consumed \* 100;

#### 2.9. Statistical analysis

Data of yeast performance in SYN and WSH media under different conditions were analysed by one- or two-way analysis of variance (ANOVA). Levene's test (p < 0.05) was used to verify the variance homogeneity. Tukey's test was used to compare the mean values between different conditions. Data obtained by analysis of main fatty acid composition of lipid extracted by the two strains were submitted to classical clustering analysis, by using Ward's algorithm and Euclidean similarity index. The software used for the statistical analyses was PAST ver. 3.26 [28].

### 3. Results and discussion

#### 3.1. Yeast performance in synthetic media under different carbon concentrations, inoculum levels and metabolic phase of growth

Previous studies, reporting the use of *Yarrowia lipolytica* and *Lipomyces tetrasporus* in the conversion of several carbon sources for the production of SCO [29,30], showed that the process yields are affected by different factors, such as the yeast strain, type and concentration of the carbon sources, and process set-ups. In a recent publication regarding the conversion of cardoon hydrolyzates by *L. tetrasporus* and *C. curvatus*, we found that the growth phase of the inoculum affected the strain ability to metabolize some degradation products by converting them into non-toxic molecules [16]. Obviously different hydrolyzates could have different inhibition thresholds due to different specific compositions thus requiring a fine-tuning of the fermentation set-ups. Although cardoon and wheat straw had a similar composition of sugars and representative inhibitory compounds there may be some inherent differences. More in general, given the complexity of the lignocellulosic matrix, additional degradation products that were not identified are likely present in the hydrolyzate. Different lignin-derived products were found by Vergara et al. [31], in wheat straw acid hydrolyzates compared to cardoon. Even if enzymatic hydrolysis used in this work is a milder process than acid hydrolysis, the presence of different lignin fragments cannot be excluded that could exert a different overall inhibitory effect. In the present paper, *Y. lipolytica* and *L. tetrasporus* were first tested by using synthetic media with sugar compositions similar to wheat straw hydrolysate. This is important to explore the kinetics of glucose and xylose uptake and explore the conversion yield toward the biomass, lipids, and polyols production.

The trials were carried out in high and low-sugar media (SYN 80 and SYN 40, respectively), by using two metabolic phases of the inoculum, Stationary Phase (SP) and Exponential Phase (EP), and two inoculum sizes (corresponding to OD 5 and OD 10).

In order to study the significant differences between two metabolic phases of the inoculum, SP and EP, and two sugar concentrations (SYN 80 and SYN 40, respectively), the process yields were statically analysed by ANOVA. The analysis, reported in Table 1, showed that there were no statistically significant differences for the *Y. lipolytica* strain with inoculum density OD 10. Only for the biomass yield value (Y DCW) in SP inoculum phase, a difference ( $p < 0.05$ ) between SYN 80 and SYN 40 was appreciable. On the contrary, for the OD 5 inoculum density, in the EP inoculum phase, a significant difference was shown

between SYN 80 and SYN 40 both for the value Y DCW and Y lipids. *Y. lipolytica* produced a biomass yield in the range 47–63% higher than *L. tetrasporus*, which ranged between 24 and 38% (Table 1).

The highest biomass production of 63% was obtained with *Y. lipolytica* inoculated in EP (Fig. 1 a, orange bar) SYN 40 and OD5. Under the same conditions, *Y. lipolytica* produced the best lipid yield, corresponding to 13.5% lipids (Fig. 1 b, orange bar). Similar yields were obtained in the same inoculum phase, EP, and medium concentration, SYN 40, at higher inoculum size, OD 10 (Fig. 1 b, orange bar) corresponding to a lipids cell content of 26% (Fig. 1 c, orange bar). The SP inoculum showed even higher biomass yields (DCW) compared to EP but only in media with the highest sugar concentrations, namely SYN 80 (Fig. 1 a, blue bar).

Process yields observed for the *Y. lipolytica* strain were comparable to the results of Enshaeieh et al. [32], relevant to the conversion of synthetic media containing 95 gL<sup>-1</sup> glucose. Moderate amounts of mannitol in the range 1.3–5.8 gL<sup>-1</sup> were also detected. Some authors described the production of citric acid by *Y. lipolytica* strain DSM 8218 [33], erythritol, mannitol, and arabitol using different *Y. lipolytica* strains [34], isocitrate, using the strain VKM Y-2373 [35], alpha-ketoglutaric acid using the strain A8 [36], and acetic acid using 6 different *Y. lipolytica* strains [37]. Although the production of mannitol was already observed in several *Y. lipolytica* strains, no specific data were reported so far for the strain DSM 8218 grown on sugars and the results presented in this paper enlarge the knowledge base of this microorganism. No statistical correlations with the process conditions emerged, therefore further analyses are necessary to assess the correlation between the formation of these metabolites and specific set-ups.

In all conditions, *L. tetrasporus* produced from 1.5 to 2-fold more lipids than *Y. lipolytica*, range 13.5–23.2 and 8.3–13.5%, respectively (Table 1).

By considering OD10 as inoculum level, both the DCW and lipid yield were significantly influenced by the sugar concentration ( $p < 0.05$ ), (Table 1). As showed in Fig. 1a and 1b, green bar, the highest DCW yield (38.8%) and lipid yield (23%) were obtained with SP cells in SYN 40 and the highest inoculum level (OD 10), whereas the highest lipid content (64%) was obtained in SYN 40 inoculated with EP cells, OD 10 (Fig. 1 c, yellow bar). In addition to the production of lipids, the production of small quantities of two secondary products was observed, one of which was identified as mannitol. This is in agreement with the analysis of secondary metabolites by *L. tetrasporus* recently published Caporusso et al., [16]. Further analyses are necessary to as-

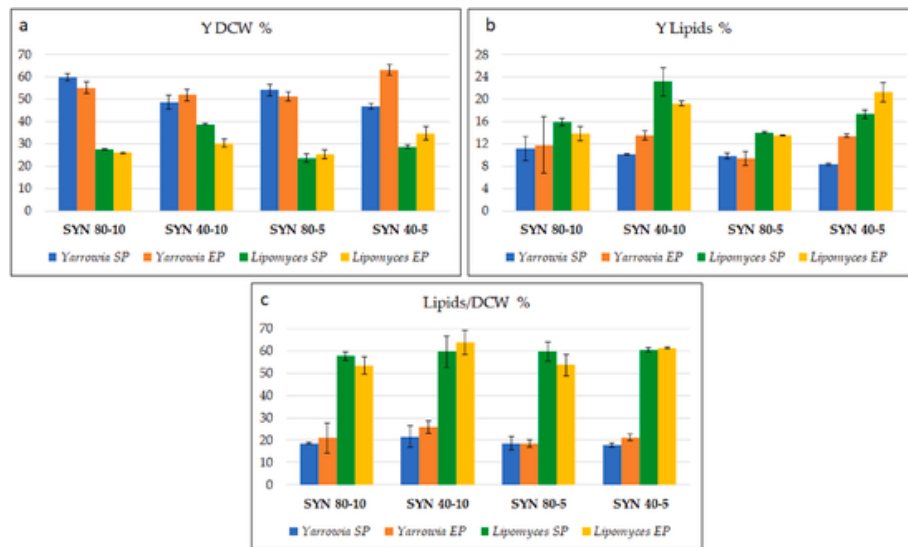
**Table 1**

Performance of *Yarrowia lipolytica* and *Lipomyces tetrasporus* on synthetic media SYN 80 and SYN 40, inoculated in Stationary Phase (SP) and Exponential Phase (EP), at two inoculum levels (OD 10 and 5). For each parameter and each strain, data with different superscript letters mean significant differences ( $p \leq 0.05$ ) among samples with the same inoculum size (OD 10 and OD 5 separately).

	<i>Yarrowia lipolytica</i> ATCC 46483							
	OD10				OD5			
	SP-SYN 80	SP-SYN 40	EP-SYN 80	EP-SYN 40	SP-SYN 80	SP-SYN 40	EP-SYN 80	EP-SYN 40
Y DCW %	60 ± 2 <sup>a</sup>	49 ± 3 <sup>b</sup>	55 ± 3 <sup>ab</sup>	52 ± 2 <sup>ab</sup>	54 ± 3 <sup>a</sup>	47 ± 1 <sup>a</sup>	51 ± 2 <sup>a</sup>	63 ± 3 <sup>b</sup>
Productivity	0.05 ± 0.01	0.05 ± 0.01	0.06 ± 0.01	0.07 ± 0.01	0.05 ± 0.01 <sup>a</sup>	0.05 ± 0.01 <sup>ab</sup>	0.06 ± 0.01 <sup>a</sup>	0.08 ± 0.00 <sup>ac</sup>
Y lipids %	11 ± 2	10.2 ± 0.1	12 ± 5	13.5 ± 0.8	9.9 ± 0.5 <sup>a</sup>	8.3 ± 0.2 <sup>a</sup>	9 ± 1 <sup>a</sup>	13.5 ± 0.3 <sup>b</sup>
Lip/DCW %	18.7 ± 0.5	22 ± 5	21 ± 7	26 ± 3	19 ± 2	18 ± 1	19 ± 1	21 ± 1
	<i>Lipomyces tetrasporus</i> Li-0407							
	SP-SYN 80	SP-SYN 40	EP-SYN 80	EP-SYN 40	SP-SYN 80	SP-SYN 40	EP-SYN 80	EP-SYN 40
	Y DCW %	27.6 ± 0.3 <sup>a</sup>	38.8 ± 0.3 <sup>b</sup>	25.9 ± 0.3 <sup>ac</sup>	30 ± 2 <sup>ad</sup>	24 ± 2 <sup>a</sup>	28.8 ± 0.8 <sup>ab</sup>	25 ± 2 <sup>a</sup>
Productivity	0.08 ± 0.01 <sup>a</sup>	0.09 ± 0.01 <sup>b</sup>	0.07 ± 0.01 <sup>a</sup>	0.07 ± 0.01 <sup>a</sup>	0.07 ± 0.01	0.07 ± 0.01	0.07 ± 0.01	0.08 ± 0.01
Y lipids %	15.9 ± 0.7 <sup>a</sup>	23 ± 2 <sup>b</sup>	14 ± 1 <sup>a</sup>	19.3 ± 0.4 <sup>b</sup>	14.1 ± 0.2 <sup>a</sup>	17.4 ± 0.7 <sup>ac</sup>	13.5 ± 0.1 <sup>ad</sup>	21 ± 2 <sup>b</sup>
Lip/DCW %	58 ± 2	60 ± 7	54 ± 4	64 ± 5	60 ± 4	60.4 ± 0.9	54 ± 4	61.3 ± 0.4

Dry Cell Weight yield (Y DCW) was expressed as a gram of DCW per gram of sugar consumed \* 100 Productivity was expressed as a gram of DCW per process time Lipid yield (Y lipids) was expressed as gram of Lipids per gram of sugar consumed \* 100 Intracellular lipids (Lip/DCW) was expressed as gram of Lipids in function of DCW gram \*100.





**Fig. 1.** Production of biomass (*Y DCW*) and lipids (*Y Lipids*) as a function of the sugars consumed. Intracellular lipids accumulation (*Lipids/DCW*) calculated as lipids produced as a function of cell biomass *Yarrowia lipolytica* inoculated in Stationary Phase, SP (blue bar) and Exponential Phase, EP (orange bar), *Lipomyces tetrasporus* inoculated in Stationary Phase SP, (green bar) and Exponential Phase, EP (yellow bar). The concentration of the medium (SYN80 or SYN40) and the quantity of inoculum (OD 10 or 5) are reported on the abscissas.

sess the correlation between the formation of these metabolites and specific process conditions.

*L. tetrasporus* in some conditions showed productivity up to 40% higher than *Y. lipolytica* (Table 1) and both yeasts showed higher productivity in low-sugar medium. In SYN 80, both yeasts were unable to completely consume glucose and at the end of the process more than 50% of xylose was still available in the medium (only for SP cell of *Y. lipolytica* about 83%). Conversely, in SYN 40 only for *L. tetrasporus* less than 50% xylose was present in the medium at the end of the process (data not shown). Furthermore, galactose and arabinose were available in the hydrolysate in lower concentration with respect to glucose and xylose, below  $2 \text{ g L}^{-1}$ . Arabinose was not converted, galactose and glucose we consumed simultaneously and the maximum contribution to the lipids production from galactose was negligible, less than 5%. Many oleaginous microorganisms are able to grow on different carbon sources, including several C5 sugars (xylose, arabinose, etc ...) [38,39]. The study of yeast metabolism on C5 sugars is important for the complete valorisation of all lignocellulosic biomass fractions. Furthermore, it has also been found that using xylose as a carbon source for lipid production may even be more performance than glucose in some cases. The theoretical maximum lipid yield from glucose is  $0.32 \text{ g/g}$ , while the theoretical maximum yield from xylose is about  $0.34 \text{ g/g}$  in the case of the phosphoketolase pathway and  $0.30 \text{ g/g}$  for the pentose phosphate pathway [12]. Xylose consumption typically starts after glucose depletion or in correspondence of specific internal sugars concentration ratio.

The higher affinity for glucose with respect to other carbon sources available in the medium is a well-known process, already documented for many oleaginous species due to the carbon catabolite repression [40]. This mechanism leads, in some cases, to diauxic growth phenomena that affect the metabolism of the secondary sugars and further limits the conversion efficiency during the fermentative process [41]. Some authors also found that the slow transport rate of xylose limits the downstream pathway; consequently, the enhancement of the transport rate is necessary for improving the cell growth rate and the xylose conversion efficiency [42,43].

Table 2 includes the detailed FAs composition of the triglycerides achieved through the investigated set-ups. The most common FAs produced by oleaginous yeasts are oleic acid (C18:1), palmitic acid (C16:0), linoleic acid (C18:2), stearic acid (C18:0) and low quantity of lauric acid (C12:0), myristic acid (C14:0), palmitoleic acid (C16:1)

and linolenic acid (C18:3) [4]. The two yeasts had a different lipid profile. *Y. lipolytica* produced about 40% oleic acid, followed by about 15% linoleic and palmitic acids, about 10% stearic and palmitoleic acids. An interesting result is the production of small quantities of short-chain FAs, namely lauric and myristic acids, and PUFAs, in particular linolenic acid. The FA profile in *Y. lipolytica* was affected by process parameters, such as sugar content of media, growth and inoculum level.

As regards *L. tetrasporus*, a low influence of the process parameters on the lipid profile was observed. Differently from *Y. lipolytica*, *L. tetrasporus* produced about 40% oleic acid, followed by about 25% stearic and palmitic acids, and a low quantity of other fatty acids. Interestingly, *L. tetrasporus* did not produce PUFAs but produced traces of long-chain FAs, namely arachidic acid (C 20:0), behenic acid (C 22:0), and lignoceric (C 24:0) acid. Similar lipid profiles were also found by Sitepu et al. [44], with the strain *L. lipofer UCDFST 78-19T* under similar conditions or by Dien et al. [45] with *L. tetrasporus Y11562* grown on undetoxified hydrolysate of Douglas fir forest residues.

On the whole, the lipids profile demonstrated that both yeasts could be used for the production of microbial oils suitable for different target applications and that the distinctive metabolic pathways could be over-expressed to foster for instance a higher production of the minor components with high added value.

### 3.2. Wheat straw hydrolysates

Biomass pretreatment is necessary to increase the polysaccharides' accessibility in the enzymatic hydrolysis. The combined effect of the saturated water vapor and the acid catalyst promoted the autohydrolysis of the acetyl groups from carbohydrates and increased the biomass hydrolyzability [46,47]. Enzymatic hydrolysis of wheat straw was already investigated by several authors [48–50]. The glucose yields typically range from 80% to 98%, depending on the technology and pretreatment conditions, the type of enzymes and their dosage, and the load of solids. In particular, Horn et al. [49], obtained a hydrolysis yield of 88% with low solids load (5%) by using an enzymatic blend no longer in use, such as Celluclast/Novozym. Kontogianni et al. [48], tested the enzymatic hydrolyzability of exploded wheat straw with a higher solids load (around 12%) by using the more recent enzymatic blend CTec2, obtaining a quantitative hydrolysis yield (98%). Further-

**Table 2**

Main fatty acids produced by *Yarrowia lipolytica* and *Lipomyces tetrasporus* grown in synthetic media SYN 80 and SYN 40, inoculated in Stationary Phase (SP) and Exponential Phase (EP), at two inoculum levels (OD 10 and 5). The values have been normalized and correspond to % of the total fatty acids produced.

	SP OD 10		EP OD 10		SP OD 5		EP OD 5	
	SYN 80	SYN 40	SYN 80	SYN 40	SYN 80	SYN 40	SYN 80	SYN 40
<i>Y. lipolytica</i>								
C12:0	4.5 ± 0.3	2.1 ± 0.2	1.5 ± 0.1	0.0 ± 0.0	3.4 ± 0.2	2.7 ± 0.2	2.1 ± 0.2	1.7 ± 0.1
C14:0	4.4 ± 0.3	1.5 ± 0.1	3.2 ± 0.2	2.0 ± 0.1	2.2 ± 0.1	2.1 ± 0.1	0.0 ± 0.0	3.2 ± 0.2
C16:0	15 ± 1	21 ± 1	20 ± 1	16 ± 1	17 ± 1	18 ± 1	15 ± 1	20 ± 2
C16:1	10.1 ± 0.8	11 ± 1	11.4 ± 0.9	7.4 ± 0.6	8.7 ± 0.5	16 ± 1	12.5 ± 0.9	9.3 ± 0.8
C18:0	10.5 ± 0.9	10.9 ± 0.9	10.5 ± 0.8	13 ± 1	10. ± 0.7	7.9 ± 0.5	14 ± 1	10.4 ± 0.8
C18:1	38 ± 2	43 ± 2	39 ± 2	45 ± 2	45 ± 3	40 ± 3	43 ± 3	46 ± 3
C18:2	15 ± 1	10 ± 1	12.7 ± 0.8	15.1 ± 0.2	11.3 ± 0.9	9.4 ± 0.8	13.4 ± 0.3	9.3 ± 0.78
C18:3	1.20 ± 0.09	0.80 ± 0.05	1.10 ± 0.06	0.40 ± 0.01	0.90 ± 0.05	0.50 ± 0.03	0.00 ± 0.00	0.00 ± 0.00
C20:0	0.00 ± 0.00	0.40 ± 0.02	0.70 ± 0.03	0.00 ± 0.00	1.00 ± 0.06	1.30 ± 0.05	0.00 ± 0.00	0.00 ± 0.00
C22:0	0.00 ± 0.00	0.00 ± 0.00	0.00 ± 0.00	0.00 ± 0.00	0.00 ± 0.00	0.00 ± 0.00	0.00 ± 0.00	0.00 ± 0.00
C24:0	0.00 ± 0.00	0.00 ± 0.00	0.00 ± 0.00	0.00 ± 0.00	0.00 ± 0.00	0.00 ± 0.00	0.00 ± 0.00	0.00 ± 0.00
<i>L. tetrasporus</i>								
C12:0	0.39 ± 0.02	0.39 ± 0.01	0.35 ± 0.01	0.30 ± 0.01	0.24 ± 0.01	0.33 ± 0.01	0.33 ± 0.02	0.29 ± 0.01
C14:0	0.54 ± 0.04	0.53 ± 0.03	0.50 ± 0.04	0.53 ± 0.03	0.47 ± 0.03	0.48 ± 0.03	0.60 ± 0.04	0.55 ± 0.04
C16:0	28 ± 2	28 ± 2	26 ± 2	27 ± 2	27 ± 2	28 ± 2	26 ± 2	27 ± 2
C16:1	1.5 ± 0.1	1.4 ± 0.1	1.5 ± 0.1	1.5 ± 0.1	1.5 ± 0.1	1.5 ± 0.1	1.4 ± 0.1	1.8 ± 0.1
C18:0	24 ± 2	24 ± 2	24 ± 2	24 ± 2	23 ± 2	21 ± 2	24 ± 2	21 ± 2
C18:1	43 ± 2	42 ± 2	44 ± 3	42 ± 3	44 ± 3	44 ± 2	43 ± 2	46 ± 3
C18:2	0.63 ± 0.04	0.67 ± 0.03	0.69 ± 0.02	0.50 ± 0.03	0.68 ± 0.05	0.64 ± 0.04	0.59 ± 0.04	0.64 ± 0.03
C18:3	0.00 ± 0.00	0.00 ± 0.00	0.00 ± 0.00	0.00 ± 0.00	0.00 ± 0.00	0.00 ± 0.00	0.00 ± 0.00	0.00 ± 0.00
C20:0	0.95 ± 0.05	0.90 ± 0.04	0.93 ± 0.06	0.87 ± 0.06	0.99 ± 0.06	0.91 ± 0.05	0.96 ± 0.06	0.89 ± 0.05
C22:0	0.00 ± 0.00	0.79 ± 0.05	0.44 ± 0.04	0.53 ± 0.03	0.81 ± 0.07	0.65 ± 0.05	0.88 ± 0.07	0.47 ± 0.03
C24:0	1.6 ± 0.1	1.7 ± 0.1	1.6 ± 0.1	1.6 ± 0.1	1.4 ± 0.1	1.5 ± 0.1	1.5 ± 0.1	1.6 ± 0.1

more, Alvira et al. [50], tested a solid load of 15% with a hydrolysis yield of around 80%. In the present investigation acid-catalysed steam exploded wheat straw was treated with CTec2 at 20% biomass loads. After the steam explosion process, the pretreated product consisted of a cellulose-rich solid fraction and a liquid fraction containing hemicellulose (Table 3). The hemicellulose-rich fraction contained several degradation products, including phenol-like molecules from the lignin depolymerization, that can reduce the hydrolysis yield as effect of enzymatic inhibition or adsorption on cellulose. The steam pretreated pulp had an overall dry matter of 12.5 ± 0.8% with the following composition (%): 35.0 ± 1.4 glucan, 18.2 ± 0.9 xylan, 1.4 ± 0.2 arabinan, 0.9 ± 0.1 galactan, 21.2 ± 1.5 insoluble acid lignin, 1.95 ± 0.24 acetyl groups, 0.15 ± 0.02 5-HMF, 0.74 ± 0.04 furfural, calculated as % of the pretreated biomass dry matter. The steam-pretreated product was hydrolysed at high DM content to achieve mixed hydrolysates. The final glucose and xylose yields were 89% and 71% respectively. The detailed composition of the hydrolysate (WSH 80) is summarized in Table 3. The diluted hydrolysate was achieved from the WSH 80 through the addition of the hemicellulose-rich stream in the ratio 1:1 (WSH 40).

### 3.3. Yeast performance in hydrolysate under different concentrations, inoculum levels and metabolic phase of growth

The main problem hindering the efficient conversion of the lignocellulosic sugars as carbon source for microbial processes is the presence of toxic molecules derived from the lignocellulose degradation. Biomass degradation by-products often raise the need of introducing detoxification steps by chemical-physical methods before microbial conversion [51]. Despite the benefits over increased sugars fer-

mentability, the detoxification methods are often costly. Furthermore, there is no specific detoxification method for all situations and each method has a specific set of advantages and disadvantages. In situ biological detoxification is based on the capability of some microorganisms to develop an adaptive response when subjected to external stresses thus resulting more tolerant than others. An investigation from Sitepu et al. [5] reported a wide assessment of the inhibitor tolerance of 45 oleaginous yeasts species. Differently, Kim et al. [52] improved the furfural tolerance and the biological detoxification of *Y. lipolytica* by overexpressing the aldehyde dehydrogenase family proteins. The possibility of regulating the yeast response through the inoculum age, as proposed in the present work, offers a versatile tool to manage the hydrolysates toxicity. Several authors studied the toxicity of different molecules toward oleaginous yeasts [5,53–55]. The inhibition threshold is the result of many concurring factors, including the microbial strain and the synergistic effect of different microbial inhibitors. The detailed characterization of the biomass hydrolysates is complex because it could contain many oligomeric products that are often not detected by HPLC analysis and that can contribute to lower the toxicity thresholds associated with specific molecules, such as furan derivatives or acids. For this reason, the toxicity threshold of biomass hydrolysates needs to be assessed on the whole since the uptake and metabolism of degradation by-products could significantly vary from one hydrolysate to another [53,56,57].

Considering the complexity of the lignocellulosic hydrolysates, 5-HMF and furfural were investigated as representative inhibitors since they are likely the most abundant and also the metabolic products are known and can be monitored during the process. The main scope of the present experimental design for the process optimization was to maxi-

**Table 3**

Composition of hydrolysate obtained from steam explosion and enzymatic hydrolysis of wheat straw (WSH 80). WSH 40 was obtained from WSH 80 by dilution with hemicellulose in ratio 2:1. Hemicellulose was the liquid fraction obtained from steam pretreated wheat straw.

	Glucose gL <sup>-1</sup>	Xylose gL <sup>-1</sup>	Galactose gL <sup>-1</sup>	Arabinose gL <sup>-1</sup>	Acetic acid gL <sup>-1</sup>	5-HMF mgKg <sup>-1</sup>	Furfural mgKg <sup>-1</sup>
WSH 80	86 ± 7	22 ± 2	0.9 ± 0.1	1.7 ± 0.1	2.3 ± 0.2	145 ± 8	705 ± 10
WSH 40	40 ± 2	22 ± 1	0.9 ± 0.2	1.8 ± 0.1	2.3 ± 0.3	152 ± 7	700 ± 13
Hemicellulose	1.0 ± 0.1	16 ± 1	0.7 ± 0.1	1.4 ± 0.1	1.9 ± 0.3	150 ± 5	723 ± 11

mize the lipid production by *L. tetrasporus* and *Y. lipolytica* in undetoxified hydrolyzates. Furan compounds were used as markers of the biotransformation of the yeast cells in the tested conditions.

The ANOVA analysis on wheat straw hydrolysate (Table 4) showed that the *Y. lipolytica* metabolism in terms of Y DCW and productivity, was significantly influenced for both OD 10 and OD 5 by the inoculation phase, EP and SP, but not by sugars concentration. On the other hand, the production of lipids did not show statistically significant differences ( $p < 0.05$ ) for the inoculation phase and sugar concentration. *Y. lipolytica* confirmed its higher biomass yield 30–61% compared to *L. tetrasporus* 0–30% (Table 4).

The productivity of *Y. lipolytica* remained unchanged compared to SYN media only for SP inoculation, whereas the inoculum of EP cells yielded lower productivity in comparison to SYN medium. This emphasizes that cells in the EP inoculum had a greater sensitivity to the toxicity of the hydrolysate. Furfural usually increases the lag phase in a linear matter, while 5-HMF usually reduces the growth rate [53]. The 51-

30 *Yarrowia* strain resulted sensitive to furfural as it was inhibited when grown on a medium containing 0.5 gL<sup>-1</sup> of furfural [5], whereas other authors [53] showed the ability of *Yarrowia W29* strain to grow in presence of furfural concentrations up to 2.9 gL<sup>-1</sup>, although after a prolonged lag phase. In the present work, the analysis of the furfural and 5-HMF revealed that the microorganism consumed both the compounds in the first 24 h in all the tested conditions. These molecules were not metabolized but were reduced into less toxic products, respectively 5-HMF alcohol and furfuryl alcohol by reductases and dehydrogenases in agreement with previous observations reported by Crigler et al., [58]. The greater sensitivity of EP cells compared to SP cells is well represented in Fig. 2.

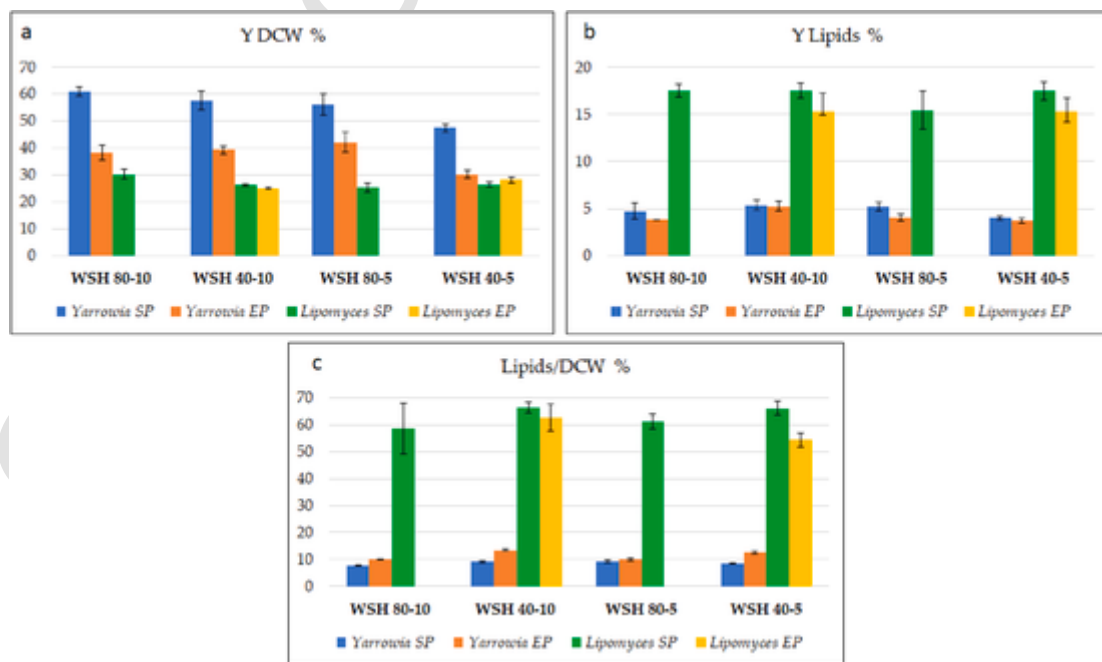
*Y. lipolytica* inoculated in the SP phase, under all experimental conditions, obtained a biomass yield (Fig. 2 a, blue bar) and a lipid yield (Fig. 2 b, blue bar) higher than the EP inoculum (orange bar).

Fermentation tests with *Y. lipolytica* indicated that, even if the microorganism was able to operate a biological detoxification of WSH, the

**Table 4**

Growth performance of *Yarrowia lipolytica* and *Lipomyces tetrasporus* on wheat straw hydrolysate, WSH 80 and WSH 40, inoculated in Stationary Phase (SP) and Exponential Phase (EP), by using high and low inoculum levels (OD 10 and OD 5, respectively). For each parameter and each strain, data with different superscript letters mean significant differences ( $p \leq 0.05$ ) among samples with the same inoculum size (OD 10 and OD 5, separately).

Yarrowia lipolytica ATCC 46483								
	OD10				OD5			
	SP-WSH 80	SP-WSH 40	EP-WSH 80	EP-WSH 40	SP-WSH 80	SP-WSH 40	EP-WSH 80	EP-WSH 40
Y DCW%	61 ± 2 <sup>a</sup>	58 ± 4 <sup>a</sup>	38 ± 3 <sup>b</sup>	39 ± 2 <sup>b</sup>	56 ± 4 <sup>a</sup>	47 ± 2 <sup>ab</sup>	42 ± 4 <sup>bc</sup>	30 ± 2 <sup>c</sup>
Prod	0.05 ± 0.01 <sup>a</sup>	0.05 ± 0.01 <sup>a</sup>	0.04 ± 0.01 <sup>b</sup>	0.04 ± 0.01 <sup>b</sup>	0.05 ± 0.01	0.04 ± 0.01	0.04 ± 0.01	0.04 ± 0.01
Y lip%	4.7 ± 0.8	5.3 ± 0.5	3.8 ± 0.01	5.3 ± 0.5	5.2 ± 0.5 <sup>a</sup>	4.0 ± 0.2 <sup>ab</sup>	4.0 ± 0.3 <sup>ab</sup>	3.8 ± 0.3 <sup>b</sup>
Lip/DCW %	7.8 ± 0.1 <sup>a</sup>	9.1 ± 0.3 <sup>b</sup>	9.9 ± 0.3 <sup>b</sup>	13.4 ± 0.5 <sup>c</sup>	9.4 ± 0.5 <sup>a</sup>	8.5 ± 0.2 <sup>a</sup>	9.9 ± 0.6 <sup>a</sup>	12.6 ± 0.6 <sup>b</sup>
Lipomyces tetrasporus Li-0407								
	SP-WSH 80	SP-WSH 40	EP-WSH 80	EP-WSH 40	SP-WSH 80	SP-WSH 40	EP-WSH 80	EP-WSH 40
Y DCW%	30 ± 2 <sup>a</sup>	26.4 ± 0.4 <sup>b</sup>	0.00 ± 0.00 <sup>c</sup>	25.0 ± 0.3 <sup>b</sup>	25 ± 2 <sup>a</sup>	26 ± 1 <sup>a</sup>	0.00 ± 0.00 <sup>b</sup>	28 ± 1 <sup>a</sup>
Prod	0.06 ± 0.01 <sup>a</sup>	0.05 ± 0.01 <sup>ac</sup>	0.00 ± 0.00 <sup>b</sup>	0.03 ± 0.01 <sup>c</sup>	0.05 ± 0.01 <sup>a</sup>	0.05 ± 0.01 <sup>a</sup>	0.00 ± 0.00 <sup>b</sup>	0.03 ± 0.01 <sup>c</sup>
Y lip%	17.5 ± 0.7 <sup>a</sup>	17.6 ± 0.8 <sup>a</sup>	0.00 ± 0.00 <sup>b</sup>	15 ± 2 <sup>a</sup>	15 ± 2 <sup>a</sup>	17.5 ± 0.9 <sup>a</sup>	0.01 ± 0.01 <sup>b</sup>	15 ± 1 <sup>a</sup>
Lip/DCW %	59 ± 9 <sup>a</sup>	67 ± 2 <sup>a</sup>	0.00 ± 0.00 <sup>b</sup>	63 ± 5 <sup>a</sup>	61 ± 3 <sup>a</sup>	66 ± 3 <sup>ac</sup>	0.01 ± 0.01 <sup>b</sup>	54 ± 3 <sup>ad</sup>



**Fig. 2.** Production of biomass (Y DCW) and lipids (Y Lipids) as a function of the sugars consumed. Intracellular lipids accumulation (Lipids/DCW) calculated as lipids produced as a function of cell biomass. *Yarrowia lipolytica* inoculated in Stationary Phase, SP (blue bar) and Exponential Phase, EP (orange bar), *Lipomyces tetrasporus* inoculated in Stationary Phase SP, (green bar) and Exponential Phase, EP (yellow bar). The concentration of the medium (WSH 80 or WSH 40) and the quantity of inoculum (OD 10 or 5) are reported on the abscissas.

lipid yield was very low, with an average yield of 5% under all the studied conditions (Fig. 2b, blue and orange bar).

Lipid yields decreased by 50% compared to those obtained in synthetic medium. Probably, when the process was stopped, after 300 h, the yeast had not yet started the lipogenic phase, considering that about 50% and 60% of the total sugars (for WSH 40 and WSH 80, respectively) were still available in the medium (data not shown). Besides the intrinsic metabolic efficiency of the yeast, the flasks did not ensure adequate oxygenation of the medium or a regular pH control that could have limited the full uptake of the available carbon sources. In any case, the decrease in performance was most likely a consequence of the hydrolysate toxicity, which inhibited the lipids production by 50%, according with other studies [5,59].

Furthermore, as found in SYN medium, less than 10% mannitol was produced along with 3 unidentified compounds, likely belonging to the polyol groups or organic acid groups. Similar results were found by Giacomobono et al. [33], with *Yarrowia lipolytica* ATCC 46483. The authors reported mannitol and citric acid production using glycerol as the sole C source. Besides furan compounds, *Y. lipolytica* also metabolized acetic acid, which was consumed in the first 48 h. This is of great importance as short chain organic acids are among the most abundant degradation by-products with inhibitory effects in biomass hydrolysates [60]. For example, Poonatawee et al. [55], found a significant decrease in biomass and lipid concentration by 72% and 97%, respectively, for *R. fluviale* DMKU-SP314, when acetic acid concentration was higher than 1.0 g L<sup>-1</sup>.

*L. tetrasporus* was never tested so far for the production of SCO from undetoxified hydrolysates of wheat straw. The results in Table 4 show that the cells viability and metabolic capacity were severely affected by the hydrolysate composition ( $p < 0.05$ ). The productivity was reduced by 67% compared to SYN tests. The growth phase of inoculum affected significantly the performance of this strain. In SP, *L. tetrasporus* was able to grow in any condition, differently in EP the yeast was able to grow only when inoculated in a medium with a low sugar concentration (Table 4). In these conditions, the process was very slow and the productivity was 3-folds lower than the SYN tests, and half that achieved with SP inoculum under the same conditions (Table 4). SP inoculum was able to metabolize furan compounds in the first 48 h and after that, the growth rate was comparable to the values observed in SYN medium. The EP inoculum, was 4-folds slower than SP inoculum and required around 200 h to detoxify the medium after that the growth proceeded as SYN medium (Supplementary). In high sugar medium, *L. tetrasporus* was unable to grow even after 200 h. Although the concentrations of inhibitors are the same in EP-WSH80 and EP-WSH40, the microorganism behaviour was extremely different on the two growth medium. This could be likely due to a higher osmotic stress in the WSH80 compared to WSH40. Similar effect of the sugars concentrations was previously described by Caporusso et al., 2021.

Under the same conditions, the SP inoculum was very efficient and quick in detoxifying the hydrolysate [16]. The different behaviour between EP and SP could lie in the stress tolerance mechanisms associated with different metabolic phases. In fact, it is well established from previous investigations on *Saccharomyces* strains that SP cells have a high tolerance towards multiple stress factors [61]. For example, the SP in *Saccharomyces cerevisiae* increases the robustness to thermal and osmotic shock [62] and increases the tolerance to acid compounds and wide pH range [17]. In this yeast, a thickening of the plasma membrane [63] and overexpression of alcohol dehydrogenase was also observed during SP [64]. Several studies have shown that these conditions play a crucial role in the stress tolerance of furan molecules as one of the enzymes responsible for the conversion of 5-HMF and furfural is aldehyde dehydrogenase [64]. Furthermore, numerous studies [65–68] observed a membrane damage due to furan molecules. Consequently, a membrane thickening could prevent or limit this effect. Similar tolerance

mechanism might be correlated to the resistance of *L. tetrasporus* inoculated in SP.

Like *Y. lipolytica*, *L. tetrasporus* inoculated in the SP phase, obtained a biomass yield and a lipid yield (Fig. 2a and 2b, green bar) higher than the EP inoculum (Fig. 2a and 2b, yellow bar).

The maximum DCW yield, 30%, was obtained with SP cells (Fig. 2a, green bar), grown on WSH 80 with inoculum density OD 10, whereas the maximum yield and lipid content, 17.6% (Fig. 2b, green bar) and 67% (Fig. 2c, green bar) respectively, were obtained with SP inoculum, WSH 40 and OD 10. A very similar result was obtained with the inoculum density corresponding to OD 5, namely 17% and 66% (Fig. 2b and c, green bar). It seems that the furan molecules did not have a negative effect on lipid synthesis; indeed, in some cases, higher yields were obtained on WSH (WSH 80, OD 10 and 5) compared to SYN. This result suggests that additional sources of carbon, present in WSH, were likely used by the yeast for growth and lipid production. Previous studies reported that *Rhodospiridium toruloides* achieved up to 30% more biomass, using WSH as a carbon source compared to SYN medium [38]. Probably, in the wheat straw hydrolysate, one of the non-sugar carbon sources can be represented by acetic acid. In all experimental conditions, acetic acid was no longer present in the medium at the end of the process.

From the analysis of the lipid profile no difference emerged between the growth on SYN medium and WSH. This result indicates the absence of correlation between the furan molecules or additional degradation products and the enzymes involved in the synthesis of FAs. This is in agreement with previous results which similarly demonstrated the absence of correlation with the lipid profile of *Rhodospiridium toruloides* [54] with furan compounds. On the other hand, it was observed that, besides the specific microorganisms, different Carbon sources could determine different lipid profiles [69,70].

The data related to the composition of main fatty acids of lipids extracted by the two strains, after growth both in synthetic medium (SYN) and wheat straw hydrolysate (WSH) at different sugar concentration (80 and 40) and growth phase (SP and EP), were submitted to cluster analysis. The obtained dendrogram (Fig. 3) shows that the composition of lipid profile was mainly affected by the yeast strain. In fact, the fatty acid composition of lipids extracted by *L. tetrasporus* in all the tested conditions was included in the same group, which was separated by lipids extracted by *Y. lipolytica*.

The lipid profile of *Y. lipolytica* strains contained higher percentage of C18:2 and C16:1 (linoleic and palmitoleic acids, respectively) than

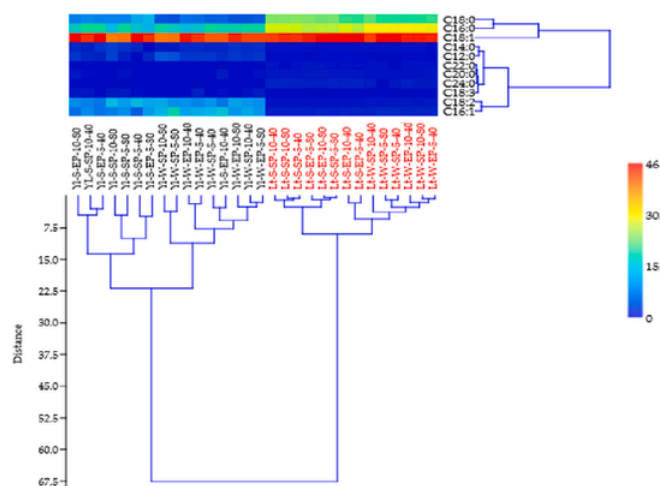


Fig. 3. Dendrogram obtained by cluster analysis on main fatty acid composition extracted by *Yarrowia lipolytica* (Yl, black) and *Lipomyces tetrasporus* (Lt, red) grown in synthetic medium (S) and wheat straw hydrolysate (W), at low and high sugar concentrations (80 and 40), inoculated in Stationary (SP) and Exponential (EP) phase, at two inoculum levels (10 and 5 OD).



lipids extracted by *L. tetrasporus*, which was characterized by higher percentage of C18:0 and C16:0 (stearic and palmitic acids, respectively). Each group can be further subdivided into two subgroups, in function of growth medium. For example, the lipid profile of *Y. lipolytica* strain, grown on synthetic medium was characterized by higher content of C18:0 than the profile obtained by this strain grown on WSH. In both the strains and in all the experimental conditions, oleic acid was the most abundant fatty acid.

### 3.4. Scale-up at 10 L bioreactor

On the basis of previous results, *L. tetrasporus* strain was selected for scaling-up the bioconversion process. The strain was cultured in a 10 L bioreactor in order to evaluate the kinetics of growth and lipid production on a medium-level scale. Since high glucose concentrations had a negative effect on yeast growth, a fed-batch process was implemented for sugar supplementation in order to avoid the negative effect induced by the high sugar concentration. The process was carried out using the conditions previously optimized. The obtained results are shown in Fig. 4. The initial sugars content was consumed after approximately 66 h of growth, whereas 5-HMF, furfural, and acetic acid were consumed in the first 24 h. Galactose was also metabolized in the first 24 h while the xylose uptake begins when the residual glucose concentration was comparable to xylose (15 gL<sup>-1</sup>).

Compared with the flask tests, the bioreactor process was about 4-folds faster thanks to a controlled oxygenation combined with the regular pH adjustment. The maximum yield and lipid content of 21% and 62% respectively, were obtained at the end of the first feed (84 h) and, in these conditions, the maximum productivity of 0.25 gL<sup>-1</sup>h<sup>-1</sup> was also achieved. At the end of the process, 40 gL<sup>-1</sup> of DCW were obtained containing 23 gL<sup>-1</sup> of lipids, accounting for 55% of the lipid content and 15.5% of lipid yield. These results indicated that a 25% decrease in the lipid yield was obtained after the second feed.

The lipid profile, summarized in Fig. 5, contained oleic acid (C18:1) 57%, palmitic acid (C16:0) 27%, stearic acid (C18:0) 6%, palmitoleic acid (C16:1) 5% and linoleic acid (C 18:2) 4%. Low quantities of lauric acid (C12:0), myristic acid, (C14:0) linolenic acid (C18:3), and arachidic acid (C20:0) were also found. Interestingly, oleic acid was increased by 27% compared to the tests in the flasks, whereas the stearic acid production decreased by 20%. Probably, the higher dissolved oxygen in the bioreactor condition increased the unsaturation level of the fatty acids [71]. The fatty acid profile achieved in the present paper was similar to that previously reported by ourselves for the growth of *L. tetrasporus* on cardoon hydrolysates having a similar sugars composition. These results confirm that, even if the lipids yields could be affected by the specific hydrolysates composition and inhibitors level, the fatty acids profile depend only on the microorganism species and process conditions.

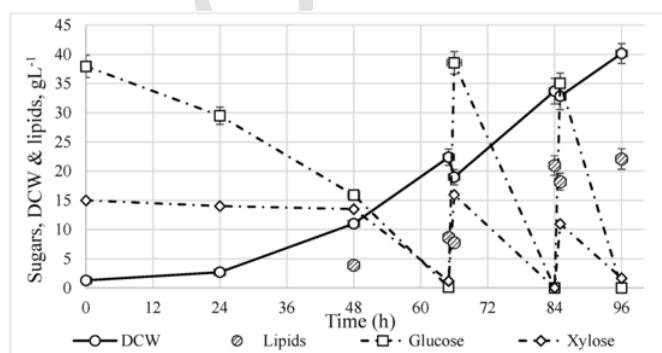


Fig. 4. Scale-up of the process at 10 L bioreactor, in fed-batch mode, with *Lipomyces tetrasporus* on WSH 40 inoculated in SP, with inoculum size of OD 5.

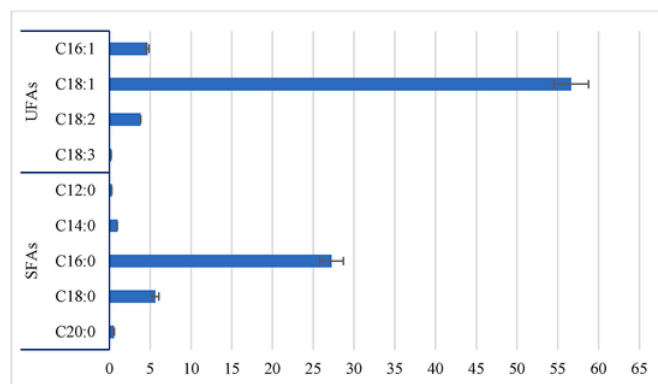


Fig. 5. Fatty acid profile of *Lipomyces tetrasporus* grown in 10 L bioreactor and fed-batch mode. UFAs = Unsaturated fatty acids; SFAs = Saturated fatty acids.

### 3.5. Synthesis and characterization of biodiesel

One potential application of microbial oils is the biodiesel production. The extracted lipids were submitted to the transesterification process reaching about 85% conversion rate. To investigate the properties of the obtained biodiesel (Table 5) four physical properties were measured: water content (wc), density ( $\rho$ ), kinematic viscosity at 40 °C ( $\nu$ ), and calorific value (high calorific value (HCV), and low calorific value, (LCV)). Furthermore, through the empirical formulas reported in Viola et al. [27], the values of cetane number (CN), Iodine Value (IV), and cold-filter plugging point (CFPP) were calculated. The biodiesel characteristics were then compared with vegetable oils (palm oil, and soybean oil [72]) and international biodiesel standards required to use biodiesel for diesel engines, namely ASTM D6751 (United States) and EN 14214 (European Union). As shown in Table 5, most properties of the microbial biodiesel are similar to those obtained from vegetable oils. For biodiesel purification, hot water is usually used for washing, in order to remove the polar fraction. Likewise, traces of water can pollute biodiesel, so it must be removed. The residual water content in the microbial biodiesel was 450 ppm, below the threshold value of 500 ppm (EN 14214 and ASTM D6751). The  $\rho$  value was very similar among the 3 analysed oils, although the density of the microbial biodiesel was the highest, 0.892 g/cm<sup>3</sup>. Density plays a crucial role to determine the fuel injection property as it affects the pumping of fuel by its volume [73]. It was reported that denser biodiesel has more energy than petroleum diesel [74]. Density is limited to 0.860–0.900 g/cm<sup>3</sup> at 15 °C in EN 14214 but there is no specification for density in the ASTM D6751.

Kinematic viscosity ( $\nu$ ) is a property of the fuel that defines the flow capacity, speed, and quality of the spray injected into the combustion chamber of the engine. The high viscosity of biodiesel causes large droplets and poor vaporization. This leads to scarce combustion and therefore to an increase in emissions [75]. The viscosity increases with the length of the fatty acid chain or with the unsaturation of the fatty acid and depends on the number and nature of the double bonds. The  $\nu$

Table 5

Biodiesel properties obtained from *L. tetrasporus* lipids, compared with vegetable oils (palm oil and rapeseed oil) and with international biodiesel standard, US biodiesel ASTM D6751 and EU biodiesel EN 14214. Standard deviations were of the order of 4%. ns = not specified.

	Density $\rho$ (g/cm <sup>3</sup> )	Viscosity $\nu$ (mm <sup>2</sup> /sec)	HCV (MJ/Kg)	IV (mgI <sub>2</sub> / 100 g)	CN	CFPP (°C)
<i>L. tetrasporus</i>	0.89	3.97	37.60	60.50	60.90	6.50
Palm oil	0.87	4.61	40.60	54.00	61.90	9.00
Soybean oil	0.88	4.26	39.70	125.50	51.30	-4.00
ASTM D6751	ns	1.90–6.00	Ns	ns	≥47	ns
EN 14214	0.86–0.90	3.50–5.00	Ns	≤120	≥51	ns

of the microbial biodiesel was 3.9 mm<sup>2</sup>/s, a value lower than  $\nu$  reported for vegetable oils and in the ranges defined by US and EU standards, 1.9–6.0 mm<sup>2</sup>/s and 3.5–5.0 mm<sup>2</sup>/s, respectively.

High calorific value (HCV) characterizes the energy content of fuels and thereby their efficiency. The HCV increases with the increasing chain length of methyl esters and with the ratio of carbon and hydrogen to nitrogen and oxygen increase [76]. Both EU and US biodiesel standards do not have any specification for HCV value. However, a low HCV value of microbial biodiesel (37.6 MJ/kg) will result in higher fuel consumption to achieve a similar yield of biodiesel from soybean or palm oil. Furthermore, from the HCV it was calculated the LCV value on the basis of the elemental composition of biodiesel. The LCV value indicates the amount of energy that could be transferred during combustion. The LCV obtained was 35.23 MJ/kg.

The iodine value (IV) refers to the tendency of the biodiesel to react with oxygen at room temperature. High IV causes the polymerization of glycerides, and rubber formation by heating. It depends on both the number and position of the double bonds in the FAMES. Unsaturated fatty acids methyl esters crystallize more slowly than saturated fatty acids, therefore, biodiesel with high levels of unsaturated fatty acid methyl esters is more suitable for cold countries [77]. On the other hand, unsaturated compounds can reduce the oxidation stability of biodiesel because double bonds are susceptible to being oxidized. EU has set a limit of IV at 120 g I<sub>2</sub>/100 g, which excludes soybean oils as feedstocks for biodiesel production. In this study, about 65% of microbial oils was composed of unsaturated fatty acids methyl esters, and the IV of microbial biodiesel was 60.5 mgI<sub>2</sub>/100 g.

The cetane number (CN) provides information on the combustion behaviour, in particular on the ignition time delay in the combustion chamber. A low CN is related to inefficient combustion, and therefore resulting in increase of exhaust gases and particulate emissions [78]. In this study, the CN of microbial biodiesel is 60.9, very similar to palm oil (61.9) biodiesel and 17% higher than soybean oil (51.3) biodiesel. Furthermore, the CN value meets the value of EU ( $\geq 51$ ) and US ( $\geq 47$ ) quality standards.

To determine the behaviour of biodiesel at low temperatures it is necessary to calculate the cold filter plugging point (CFPP). At low temperatures the saturated fatty acids C16: 0 and C18: 0 precipitate, forming solids that clog the fuel filter or block the engine [79]. No specific recommendation in the European standard based on this value is available. In this study, the value was quite high, 6.5 °C, but it can be improved by blending the biodiesel with alcohol, such as butanol or methanol [80].

#### 4. Conclusions

The present study reported a detailed investigation of *Lipomyces tetrasporus* Li-0407 and *Yarrowia lipolytica* ATCC 46483 grown for the first time on undetoxified hydrolysates of steam pre-treated wheat straw for the production of SCO and advanced biodiesel. The process was extensively investigated at flask scale by exploring the effect of the inoculum age, cell density and medium composition. The results indicated that *Y. lipolytica* grew in undetoxified hydrolysates, reaching biomass yields of 61% but achieved lower lipids yields of 5% compared to *L. tetrasporus*. The inoculum age played a decisive role in determining a sharp difference in the cell response to microbial stress. In the stationary phase of the growth, *L. tetrasporus* inoculum showed an enhanced tolerance to the stress condition, compared to the exponential phase. Furthermore, higher growth and lipid production was documented in medium with low sugar concentration. Under these conditions, namely glucose and xylose concentration of 40 and 22 gL<sup>-1</sup>, the lipid yield and cell accumulation were 18% and 67% respectively. The optimized process conditions for the conversion of undetoxified wheat straw hydrolysates by *L. tetrasporus* were finally tested in a medium scale bioreactor (10 L bioreactor), using a fed-batch process enabling a final lipid

yield and content of 21% and 62%, respectively. The *L. tetrasporus* oil was extracted and transesterified to achieve biodiesel whose chemical-physical properties resulted very similar to palm or soy oils and could, therefore, represent a potential substitute for vegetable oils in the production of advanced biodiesel and additional oil-based advanced biofuels.

#### CRediT authorship contribution statement

**Antonio Caporusso** : Conceptualization, Data curation, Formal analysis, Investigation, Methodology, Project administration, Validation, Writing – original draft, Writing – review & editing. **Isabella De Bari** : Conceptualization, Project administration, Supervision, Writing – review & editing. **Federico Liuzzi** : Data curation, Investigation, Methodology, Writing – original draft. **Roberto Albergo** : Investigation, Writing – original draft. **Vito Valerio** : Investigation, Methodology, Validation, Egidio Viola : Validation, Writing – original draft. **Rocchina Pietrafesa** : Data curation, Formal analysis, Software, Writing – original draft. **Gabriella Siesto** : Data curation, Formal analysis, Software, Writing – original draft. **Angela Capece** : Conceptualization, Project administration, Software, Supervision, Writing – review & editing.

#### Declaration of competing interest

The authors declare that they have no known competing financial interests or personal relationships that could have appeared to influence the work reported in this paper.

#### Data availability

Data will be made available on request.

#### Appendix A. Supplementary data

Supplementary data to this article can be found online at <https://doi.org/10.1016/j.renene.2022.11.059>.

#### References

- [1] C. Johnson, A. Ruiz Sierra, J. Dettmer, K. Sidiropoulou, E. Zicmane, A. Canalis, P. Llorente, P. Paiano, P. Mengal, V. Puzzolo, The bio-based industries joint undertaking as a catalyst for a green transition in Europe under the European green deal, *EFB Bioecon.* J. 1 (2021), <https://doi.org/10.1016/j.bioeco.2021.100014>.
- [2] S. Mayr, B. Hollaus, V. Madner, Palm oil, the RED II and WTO law: EU sustainable biofuel policy tangled up in green? *Rev. Eur. Community Int. Environ. Law* 30 (2021), <https://doi.org/10.1111/reel.12386>.
- [3] I. de Bari, D. Cuna, N. di Fidio, Biorefineries: biofuels, biochemicals, and bioproducts, in: *Biofuels Production and Processing Technology*, 2017, <https://doi.org/10.1201/9781315155067>.
- [4] Z. Miao, X. Tian, W. Liang, Y. He, G. Wang, Bioconversion of corncob hydrolysate into microbial lipid by an oleaginous yeast *Rhodotorula taiwanensis* AM2352 for biodiesel production, *Renew. Energy* 161 (2020), <https://doi.org/10.1016/j.renene.2020.07.007>.
- [5] I. Sitepu, T. Selby, T. Lin, S. Zhu, K. Boundy-Mills, Carbon source utilization and inhibitor tolerance of 45 oleaginous yeast species, *J. Ind. Microbiol. Biotechnol.* 41 (2014), <https://doi.org/10.1007/s10295-014-1447-y>.
- [6] L. Qin, L. Liu, A.P. Zeng, D. Wei, From low-cost substrates to Single Cell Oils synthesized by oleaginous yeasts, *Bioresour. Technol.* 245 (2017), <https://doi.org/10.1016/j.biortech.2017.05.163>.
- [7] I. Antonopoulou, A. Spanopoulos, L. Matsakas, Single cell oil and ethanol production by the oleaginous yeast *Trichosporon fermentans* utilizing dried sweet sorghum stalks, *Renew. Energy* 146 (2020), <https://doi.org/10.1016/j.renene.2019.07.107>.
- [8] S. Vyas, M. Chhabra, Assessing oil accumulation in the oleaginous yeast *Cystobasidium oligophagum* JRC1 using dairy waste cheese whey as a substrate, *3 Biotech* 9 (2019), <https://doi.org/10.1007/s13205-019-1701-0>.
- [9] X. Qian, O. Gorte, L. Chen, W. Zhang, W. Dong, J. Ma, F. Xin, M. Jiang, K. Ochseneither, Continuous self-provided fermentation for microbial lipids production from acetate by using oleaginous yeasts *Cryptococcus podzolicus* and *Trichosporon porosum*, *Renew. Energy* 146 (2020), <https://doi.org/10.1016/j.renene.2019.07.013>.
- [10] Y. Louhasakul, B. Cheirsilp, S. Maneerat, P. Prasertsan, Potential use of flocculating oleaginous yeasts for bioconversion of industrial wastes into biodiesel

- feedstocks, *Renew. Energy* 136 (2019), <https://doi.org/10.1016/j.renene.2018.10.002>.
- [11] N. Bonatsos, C. Marazioti, E. Moutousidi, A. Anagnostou, A. Koutinas, I.K. Kookos, Techno-economic analysis and life cycle assessment of heterotrophic yeast-derived single cell oil production process, *Fuel* 264 (2020), <https://doi.org/10.1016/j.fuel.2019.116839>.
- [12] A. Caporusso, A. Capece, I. de Bari, Oleaginous yeasts as cell factories for the sustainable production of microbial lipids by the valorization of agri-food wastes, *Fermentation* 7 (2021), <https://doi.org/10.3390/fermentation7020050>.
- [13] N. Bonatsos, C. Marazioti, E. Moutousidi, A. Anagnostou, A. Koutinas, I.K. Kookos, Techno-economic analysis and life cycle assessment of heterotrophic yeast-derived single cell oil production process, *Fuel* 264 (2020), <https://doi.org/10.1016/j.fuel.2019.116839>.
- [14] J. Rajesh Banu, S. Kavitha, R. Yukesh Kannah, T. Poornima Devi, M. Gunasekaran, S.H. Kim, G. Kumar, A review on biopolymer production via lignin valorization, *Bioresour. Technol.* 290 (2019), <https://doi.org/10.1016/j.biortech.2019.121790>.
- [15] N. di Fidio, C. Antonetti, A.M. Raspolli Galletti, Microwave-assisted cascade exploitation of giant reed (*Arundo donax* L.) to xylose and levulinic acid catalysed by ferric chloride, *Bioresour. Technol.* 293 (2019), <https://doi.org/10.1016/j.biortech.2019.122050>.
- [16] A. Caporusso, I. de Bari, V. Valerio, R. Albergo, F. Liuzzi, Conversion of cardoon crop residues into single cell oils by *Lipomyces tetrasporus* and *Cutaneotrichosporon curvatus*: process optimizations to overcome the microbial inhibition of lignocellulosic hydrolysates, *Ind. Crop. Prod.* 159 (2021), <https://doi.org/10.1016/j.indcrop.2020.113030>.
- [17] V. Narayanan, J. Schelin, M. Gorwa-Grauslund, E.W.J. van Niel, M. Carlquist, Increased lignocellulosic inhibitor tolerance of *Saccharomyces cerevisiae* cell populations in early stationary phase, *Biotechnol. Biofuels* 10 (2017), <https://doi.org/10.1186/s13068-017-0794-0>.
- [18] A. Beopoulos, F. Cescut, R. Haddouche, J.L. Uribelarra, C. Molina-Jouve, J.M. Nicaud, *Yarrowia lipolytica* as a model for bio-oil production, *Prog. Lipid Res.* 48 (2009), <https://doi.org/10.1016/j.plipres.2009.08.005>.
- [19] C.S.A. Sluiter, B. Hames, R. Ruiz, J. Slui, D.C. ter, D. Templeton, *Determination of Structural Carbohydrates and Lignin in Biomass: Laboratory Analytical Procedure (LAP)*, 2008 Technical Report NREL/TP-510-42618.
- [20] S. Crognale, F. Liuzzi, A. D'Annibale, I. de Bari, M. Petruccioli, *Cynara cardunculus* a novel substrate for solid-state production of *Aspergillus tubingensis* cellulases and sugar hydrolysates, *Biomass Bioenergy* 127 (2019), <https://doi.org/10.1016/j.biombioe.2019.105276>.
- [21] S.Q. Tian, R.Y. Zhao, Z.C. Chen, Review of the pretreatment and bioconversion of lignocellulosic biomass from wheat straw materials, *Renew. Sustain. Energy Rev.* 91 (2018), <https://doi.org/10.1016/j.rser.2018.03.113>.
- [22] I. Ballesteros, M.J. Negro, J.M. Oliva, A. Cabañas, P. Manzanares, M. Ballesteros, Ethanol production from steam-explosion pretreated wheat straw, *Appl. Biochem. Biotechnol.* 1 (2006) 496, <https://doi.org/10.1385/ABAB:130>.
- [23] T.K. Ghose, Measurement of cellulase activities, *Pure Appl. Chem.* 59 (1987), <https://doi.org/10.1351/pac198759020257>.
- [24] W.R. Morrison, L.M. Smith, Preparation of fatty acid methyl esters and dimethylacetals from lipids with boron fluoride-methanol, *J. Lipid Res.* 5 (1964), [https://doi.org/10.1016/s0022-2275\(20\)40190-7](https://doi.org/10.1016/s0022-2275(20)40190-7).
- [25] L.C. Meher, D. Vidya Sagar, S.N. Naik, Technical aspects of biodiesel production by transesterification - a review, *Renew. Sustain. Energy Rev.* 10 (2006), <https://doi.org/10.1016/j.rser.2004.09.002>.
- [26] S. Erdoğan, LHV and HHV prediction model using regression analysis with the help of bond energies for biodiesel, *Fuel* (2021) 301, <https://doi.org/10.1016/j.fuel.2021.121065>.
- [27] E. Viola, F. Zimbardi, V. Valerio, Graphical method to select vegetable oils as potential feedstock for biodiesel production, *Eur. J. Lipid Sci. Technol.* 113 (2011), <https://doi.org/10.1002/ejlt.201000559>.
- [28] Ø. Hammer, D.A.T. Harper, P.D. Ryan, *Past: paleontological statistics software package for education and data analysis*, *Palaeontol. Electron.* 4 (2001).
- [29] P.J. Slininger, B.S. Dien, C.P. Kurtzman, B.R. Moser, E.L. Bakota, S.R. Thompson, P.J. O'Bryan, M.A. Cotta, V. Balan, M. Jin, L. da C. Sousa, B.E. Dale, Comparative lipid production by oleaginous yeasts in hydrolysates of lignocellulosic biomass and process strategy for high titers, *Biotechnol. Bioeng.* 113 (2016), <https://doi.org/10.1002/bit.25928>.
- [30] W. Bao, Z. Li, X. Wang, R. Gao, X. Zhou, S. Cheng, Y. Men, L. Zheng, Approaches to improve the lipid synthesis of oleaginous yeast *Yarrowia lipolytica*: a review, *Renew. Sustain. Energy Rev.* 149 (2021), <https://doi.org/10.1016/j.rser.2021.111386>.
- [31] P. Vergara, M. Ladero, F. García-Ochoa, J.C. Villar, Pre-treatment of corn stover, *Cynara cardunculus* L. stems and wheat straw by ethanol-water and diluted sulfuric acid: comparison under different energy input conditions, *Bioresour. Technol.* 270 (2018), <https://doi.org/10.1016/j.biortech.2018.09.058>.
- [32] M. Enshaieeh, I. Nahvi, M. Madani, Improving microbial oil production with standard and native oleaginous yeasts by using Taguchi design, *Int. J. Environ. Sci. Technol.* (2014) 11, <https://doi.org/10.1007/s13762-013-0373-2>.
- [33] Giacomobono, Modelling of the citric acid production from crude glycerol by wild-type *Yarrowia lipolytica* DSM 8218 using response surface methodology (RSM), *Life* 12 (2022) 621.
- [34] M. Rakicka-Pustulka, J. Miedzianka, D. Jama, S. Kawalec, K. Liman, T. Janek, G. Skaradzinski, W. Rymowicz, Z. Lazar, High value-added products derived from crude glycerol via microbial fermentation using *Yarrowia clade* yeast, *Microb. Cell Factories* 20 (2021), <https://doi.org/10.1186/s12934-021-01686-0>.
- [35] S.v. Kamzolova, R.v. Shamin, N.N. Stepanova, G.I. Morgunov, J.N. Lunina, R.K. Allayarov, V.A. Samoilenko, I.G. Morgunov, Fermentation conditions and media optimization for isocitric acid production from ethanol by *Yarrowia lipolytica*, *BioMed Res. Int.* 2018 (2018), <https://doi.org/10.1155/2018/2543210>.
- [36] A. Rywińska, L. Tomaszewska-Hetman, M. Rakicka-Pustulka, P. Juszczyk, W. Rymowicz, Alpha-ketoglutaric acid production from a mixture of glycerol and rapeseed oil by *Yarrowia lipolytica* using different substrate feeding strategies, *Sustainability* (Switzerland) (2020) 12, <https://doi.org/10.3390/su12156109>.
- [37] S. Papanikolaou, A. Chatzifragkou, S. Fakas, M. Galiotou-Panayotou, M. Komaitis, J.M. Nicaud, G. Aggelis, Biosynthesis of lipids and organic acids by *Yarrowia lipolytica* strains cultivated on glucose, *Eur. J. Lipid Sci. Technol.* (2009) 111, <https://doi.org/10.1002/ejlt.200900055>.
- [38] Z. Liu, A.M. Feist, G. Dragone, S.I. Mussatto, Lipid and carotenoid production from wheat straw hydrolysates by different oleaginous yeasts, *J. Clean. Prod.* 249 (2020), <https://doi.org/10.1016/j.jclepro.2019.119308>.
- [39] K.v. Probst, P.v. Vadlani, Single cell oil production by *Lipomyces starkeyi*: biphasic fed-batch fermentation strategy providing glucose for growth and xylose for oil production, *Biochem. Eng. J.* 121 (2017), <https://doi.org/10.1016/j.bej.2017.01.015>.
- [40] Z. Zhao, M. Xian, M. Liu, G. Zhao, Biochemical routes for uptake and conversion of xylose by microorganisms, *Biotechnol. Biofuels* 13 (2020), <https://doi.org/10.1186/s13068-020-1662-x>.
- [41] L. Zhou, Z. Wen, Z. Wang, Y. Zhang, R. Ledesma-Amaro, M. Jin, Evolutionary engineering improved d-Glucose/Xylose Cofermentation of *Yarrowia lipolytica*, *Ind. Eng. Chem. Res.* 59 (2020), <https://doi.org/10.1021/acs.iecr.0c00896>.
- [42] E.M. Young, A.D. Comer, H. Huang, H.S. Alper, A molecular transporter engineering approach to improving xylose catabolism in *Saccharomyces cerevisiae*, *Metab. Eng.* 14 (2012), <https://doi.org/10.1016/j.mben.2012.03.004>.
- [43] E.M. Young, A. Tong, H. Bui, C. Spofford, H.S. Alper, Rewiring yeast sugar transporter preference through modifying a conserved protein motif, *Proc. Natl. Acad. Sci. U. S. A.* 111 (2014), <https://doi.org/10.1073/pnas.1311970111>.
- [44] I.R. Sitepu, R. Sestric, L. Ignatia, D. Levin, J.B. German, L.A. Gillies, L.A.G. Almada, K.L. Boundy-Mills, Manipulation of culture conditions alters lipid content and fatty acid profiles of a wide variety of known and new oleaginous yeast species, *Bioresour. Technol.* 144 (2013), <https://doi.org/10.1016/j.biortech.2013.06.047>.
- [45] B.S. Dien, J.Y. Zhu, P.J. Slininger, C.P. Kurtzman, B.R. Moser, P.J. O'Bryan, R. Gleisner, M.A. Cotta, Conversion of SPORL pretreated Douglas fir forest residues into microbial lipids with oleaginous yeasts, *RSC Adv.* 6 (2016), <https://doi.org/10.1039/c5ra24430g>.
- [46] D. Sulzenbacher, D. Atzmüller, F. Hawe, M. Richter, A. Cristobal-Sarramian, A. Zwirzitz, Optimization of steam explosion parameters for improved biotechnological use of wheat straw, *Biomass Convers. Biorefin.* (2021), <https://doi.org/10.1007/s13399-020-01266-z>.
- [47] I. de Bari, F. Liuzzi, A. Villone, G. Braccio, Hydrolysis of concentrated suspensions of steam pretreated *Arundo donax*, *Appl. Energy* 102 (2013), <https://doi.org/10.1016/j.apenergy.2012.05.051>.
- [48] N. Kontogianni, E.M. Barampouti, S. Mai, D. Malamis, M. Loizidou, Effect of alkaline pretreatments on the enzymatic hydrolysis of wheat straw, *Environ. Sci. Pollut. Control Ser.* 26 (2019), <https://doi.org/10.1007/s11356-019-06822-3>.
- [49] S.J. Horn, Q.D. Nguyen, B. Westereng, P.J. Nilsen, V.G.H. Eijsink, Screening of steam explosion conditions for glucose production from non-impregnated wheat straw, *Biomass Bioenergy* 35 (2011), <https://doi.org/10.1016/j.biombioe.2011.10.013>.
- [50] P. Alvira, M.J. Negro, I. Ballesteros, A. González, M. Ballesteros, Steam explosion for wheat straw pretreatment for sugars production, *Bioethanol* 2 (2016), <https://doi.org/10.1515/bioeth-2016-0003>.
- [51] L.J. Jönsson, B. Alriksson, N.O. Nilvebrant, Bioconversion of lignocellulose: inhibitors and detoxification, *Biotechnol. Biofuels* 6 (2013), <https://doi.org/10.1186/1754-6834-6-16>.
- [52] J. Kim, S. Hwang, S.M. Lee, Metabolic engineering for the utilization of carbohydrate portions of lignocellulosic biomass, *Metab. Eng.* 71 (2022), <https://doi.org/10.1016/j.mben.2021.10.002>.
- [53] O. Konzock, S. Zaghen, J. Norbeck, Tolerance of *Yarrowia lipolytica* to inhibitors commonly found in lignocellulosic hydrolysates, *BMC Microbiol.* 21 (2021), <https://doi.org/10.1186/s12866-021-02126-0>.
- [54] C. Hu, X. Zhao, J. Zhao, S. Wu, Z.K. Zhao, Effects of biomass hydrolysis by-products on oleaginous yeast *Rhodospiridium toruloides*, *Bioresour. Technol.* 100 (2009), <https://doi.org/10.1016/j.biortech.2009.04.041>.
- [55] R. Poontawee, W. Yongmanitchai, S. Limtong, Efficient oleaginous yeasts for lipid production from lignocellulosic sugars and effects of lignocellulose degradation compounds on growth and lipid production, *Process Biochem.* 53 (2017), <https://doi.org/10.1016/j.procbio.2016.11.013>.
- [56] N. Wierckx, F. Koopman, H.J. Ruijsenaars, J.H. de Winde, Microbial degradation of furanic compounds: biochemistry, genetics, and impact, *Appl. Microbiol. Biotechnol.* 92 (2011), <https://doi.org/10.1007/s00253-011-3632-5>.
- [57] R. Agrawal, A. Verma, R.R. Singhania, S. Varjani, C. di Dong, A. Kumar Patel, Current understanding of the inhibition factors and their mechanism of action for the lignocellulosic biomass hydrolysis, *Bioresour. Technol.* 332 (2021), <https://doi.org/10.1016/j.biortech.2021.125042>.
- [58] J. Crigler, M.A. Eiteman, E. Altman, Characterization of the furfural and 5-hydroxymethylfurfural (HMF) metabolic pathway in the novel isolate *Pseudomonas putida* ALS1267, *Appl. Biochem. Biotechnol.* 190 (2020), <https://doi.org/10.1007/s12010-019-03130-x>.
- [59] Y. Yu, Z. Xu, S. Chen, M. Jin, Microbial lipid production from dilute acid and dilute alkali pretreated corn stover via *Trichosporon dermatis*, *Bioresour. Technol.* 295 (2020), <https://doi.org/10.1016/j.biortech.2019.122253>.
- [60] C. da C. Nogueira, C.E. de A. Padilha, J.M. de M. Dantas, F.G.M. de Medeiros, A.



- de A. Guilherme, D.F. de S. Souza, E.S. dos Santos, In-situ detoxification strategies to boost bioalcohol production from lignocellulosic biomass, *Renew. Energy* 180 (2021), <https://doi.org/10.1016/j.renene.2021.09.012>.
- [61] Q. Zhang, Y.L. Jin, Y. Fang, H. Zhao, Adaptive evolution and selection of stress-resistant *Saccharomyces cerevisiae* for very high-gravity bioethanol fermentation, *Electron. J. Biotechnol.* 41 (2019), <https://doi.org/10.1016/j.ejbt.2019.06.003>.
- [62] M. Zambuto, R. Romaniello, N. Guaragnella, P. Romano, S. Votta, A. Capece, Identification by phenotypic and genetic approaches of an indigenous *Saccharomyces cerevisiae* wine strain with high desiccation tolerance, *Yeast* 34 (2017), <https://doi.org/10.1002/yea.3245>.
- [63] S. Sun, D. Gresham, Cellular quiescence in budding yeast, *Yeast* 38 (2021), <https://doi.org/10.1002/yea.3545>.
- [64] A. Petersson, J.R.M. Almeida, T. Modig, K. Karhumaa, B. Hahn-Hägerdal, M.F. Gorwa-Grauslund, G. Lidén, A 5-hydroxymethyl furfural reducing enzyme encoded by the *Saccharomyces cerevisiae* ADH6 gene conveys HMF tolerance, *Yeast* 23 (2006), <https://doi.org/10.1002/yea.1370>.
- [65] U. Jhariya, N.A. Dafale, S. Srivastava, R.S. Bhende, A. Kapley, H.J. Purohit, Understanding ethanol tolerance mechanism in *Saccharomyces cerevisiae* to enhance the bioethanol production: current and future prospects, *Bioenergy Res.* 14 (2021), <https://doi.org/10.1007/s12155-020-10228-2>.
- [66] H. Gu, Y. Zhu, Y. Peng, X. Liang, X. Liu, L. Shao, Y. Xu, Z. Xu, R. Liu, J. Li, Physiological mechanism of improved tolerance of *Saccharomyces cerevisiae* to lignin-derived phenolic acids in lignocellulosic ethanol fermentation by short-term adaptation, *Biotechnol. Biofuels* 12 (2019), <https://doi.org/10.1186/s13068-019-1610-9>.
- [67] Z.L.L. Liu, Understanding the tolerance of the industrial yeast *Saccharomyces cerevisiae* against a major class of toxic aldehyde compounds, *Appl. Microbiol. Biotechnol.* 102 (2018), <https://doi.org/10.1007/s00253-018-8993-6>.
- [68] P.C. López, C. Peng, N. Arneborg, H. Junicke, K.v. Gernaey, Analysis of the response of the cell membrane of *Saccharomyces cerevisiae* during the detoxification of common lignocellulosic inhibitors, *Sci. Rep.* 11 (2021), <https://doi.org/10.1038/s41598-021-86135-z>.
- [69] P. Polburee, W. Yongmanitchai, N. Lertwattanasakul, T. Ohashi, K. Fujiyama, S. Limtong, Characterization of oleaginous yeasts accumulating high levels of lipid when cultivated in glycerol and their potential for lipid production from biodiesel-derived crude glycerol, *Fungal Biol.* 119 (2015), <https://doi.org/10.1016/j.funbio.2015.09.002>.
- [70] Z. Ruan, W. Hollinshead, C. Isaguirre, Y.J. Tang, W. Liao, Y. Liu, Effects of inhibitory compounds in lignocellulosic hydrolysates on *Mortierella isabellina* growth and carbon utilization, *Bioresour. Technol.* 183 (2015), <https://doi.org/10.1016/j.biortech.2015.02.026>.
- [71] J. Chopra, R. Sen, Process optimization involving critical evaluation of oxygen transfer, oxygen uptake and nitrogen limitation for enhanced biomass and lipid production by oleaginous yeast for biofuel application, *Bioproc. Biosyst. Eng.* 41 (2018), <https://doi.org/10.1007/s00449-018-1939-7>.
- [72] S.K. Hoekman, A. Broch, C. Robbins, E. Cenicerros, M. Natarajan, Review of biodiesel composition, properties, and specifications, *Renew. Sustain. Energy Rev.* 16 (2012), <https://doi.org/10.1016/j.rser.2011.07.143>.
- [73] G. Knothe, L.F. Razon, Biodiesel fuels, *Prog. Energy Combust. Sci.* 58 (2017), <https://doi.org/10.1016/j.pecs.2016.08.001>.
- [74] I.M. Atadashi, M.K. Aroua, A.A. Aziz, High quality biodiesel and its diesel engine application: a review, *Renew. Sustain. Energy Rev.* 14 (2010), <https://doi.org/10.1016/j.rser.2010.03.020>.
- [75] A. Patel, N. Arora, J. Mehtani, V. Pruthi, P.A. Pruthi, Assessment of fuel properties on the basis of fatty acid profiles of oleaginous yeast for potential biodiesel production, *Renew. Sustain. Energy Rev.* 77 (2017), <https://doi.org/10.1016/j.rser.2017.04.016>.
- [76] L.F. Ramírez-Verduzco, J.E. Rodríguez-Rodríguez, A.D.R. Jaramillo-Jacob, Predicting cetane number, kinematic viscosity, density and higher heating value of biodiesel from its fatty acid methyl ester composition, *Fuel* 91 (2012), <https://doi.org/10.1016/j.fuel.2011.06.070>.
- [77] B. Sajjadi, A.A.A. Raman, H. Arandiyani, A comprehensive review on properties of edible and non-edible vegetable oil-based biodiesel: composition, specifications and prediction models, *Renew. Sustain. Energy Rev.* 63 (2016), <https://doi.org/10.1016/j.rser.2016.05.035>.
- [78] M. Carmona-Cabello, I.L. García, A. Papadaki, E. Tsouko, A. Koutinas, M.P. Dorado, Biodiesel production using microbial lipids derived from food waste discarded by catering services, *Bioresour. Technol.* 323 (2021), <https://doi.org/10.1016/j.biortech.2020.124597>.
- [79] A. Patel, N. Arora, K. Sartaj, V. Pruthi, P.A. Pruthi, Sustainable biodiesel production from oleaginous yeasts utilizing hydrolysates of various non-edible lignocellulosic biomasses, *Renew. Sustain. Energy Rev.* 62 (2016), <https://doi.org/10.1016/j.rser.2016.05.014>.
- [80] G.T. Jeong, J.H. Park, S.H. Park, D.H. Park, Estimating and improving cold filter plugging points by blending biodiesels with different fatty acid contents, *Biotechnol. Bioproc. Eng.* 13 (2008), <https://doi.org/10.1007/s12257-008-0144-y>.