



**University of Dundee**

## **Multiple and Multi-dimensional Transitions of Healthcare Graduates due to COVID-19**

Jindal-Snape, Divya; Gordon, Lisi; Innes, Nicola; Corlett, Joanne; Morris, Jacqui; Nanjappa, Sucharita

*DOI:*  
[10.15132/10000185](https://doi.org/10.15132/10000185)

*Publication date:*  
2022

*Licence:*  
CC BY-NC-ND

*Document Version*  
Publisher's PDF, also known as Version of record

[Link to publication in Discovery Research Portal](#)

*Citation for published version (APA):*  
Jindal-Snape, D., Gordon, L., Innes, N., Corlett, J., Morris, J., Nanjappa, S., Tooman, T., Al-Yaseen, W., Ding, C., Corrales, M., & Teo Lewen, J. (2022, Aug 2). Multiple and Multi-dimensional Transitions of Healthcare Graduates due to COVID-19. TCELT, University of Dundee. <https://doi.org/10.15132/10000185>

### **General rights**

Copyright and moral rights for the publications made accessible in Discovery Research Portal are retained by the authors and/or other copyright owners and it is a condition of accessing publications that users recognise and abide by the legal requirements associated with these rights.

- Users may download and print one copy of any publication from Discovery Research Portal for the purpose of private study or research.
- You may not further distribute the material or use it for any profit-making activity or commercial gain.
- You may freely distribute the URL identifying the publication in the public portal.

### **Take down policy**

If you believe that this document breaches copyright please contact us providing details, and we will remove access to the work immediately and investigate your claim.

# Multiple and Multi-dimensional Transitions of Healthcare Graduates due to COVID-19

## CREDITS

**PI:** Divya Jindal-Snape (d.jindalsnape@dundee.ac.uk)

**CIs:** Lisi Gordon, Nicola Innes, Joanne Corlett, Jacqui Morris, Sucharita Nanjappa, Tricia Tooman and Waraf Al-Yaseen

**Artists:** Clio Ding, Maria Corrales and Jaina Teo Lewen

*The study was funded by Tenovus Scotland.*

## AIM

To explore the ongoing multiple and multi-dimensional transitions experienced by medicine, nursing and dentistry students who were due to graduate in June 2020.

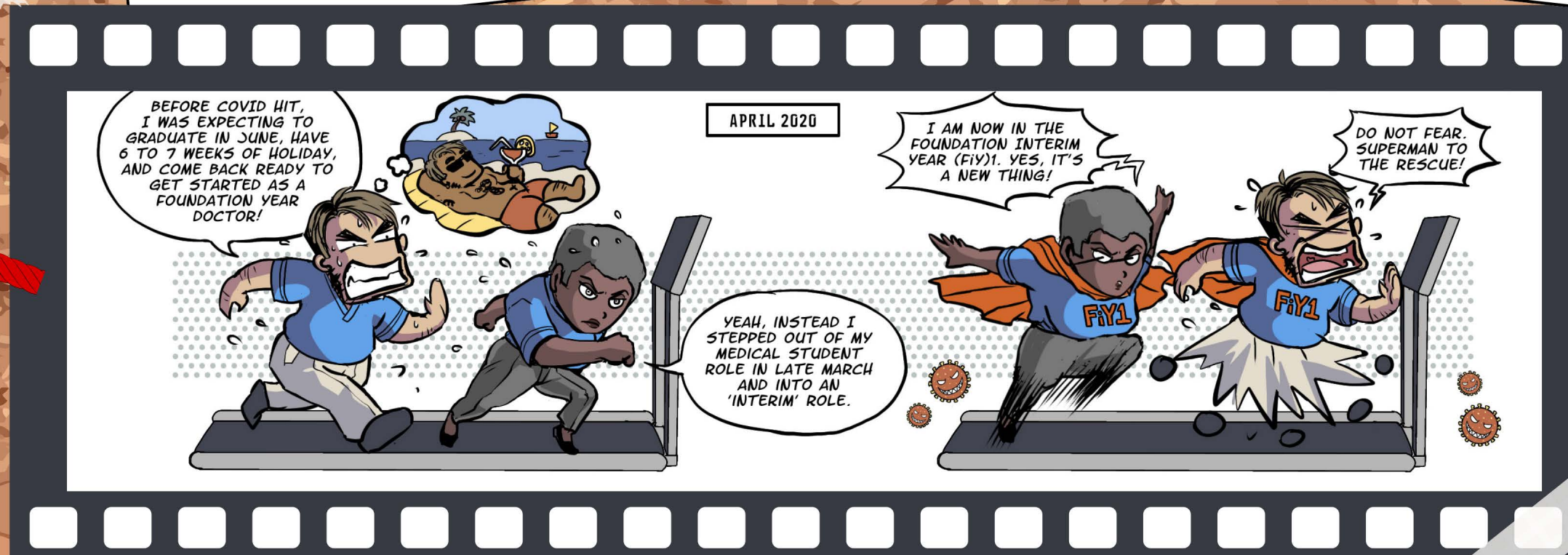
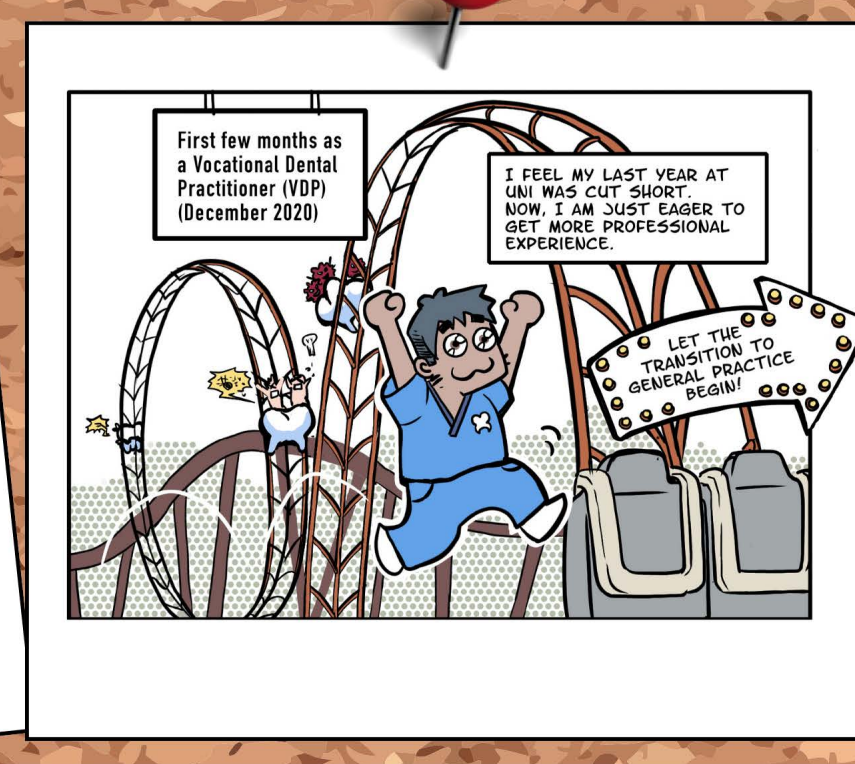
## METHODOLOGY

Longitudinal study using semi-structured interviews based on Jindal-Snape's Multiple and Multi-dimensions Transitions Theory, which has four domains (physical, psychological, social and cultural) and four contexts (individual role/work/ home/ educational).

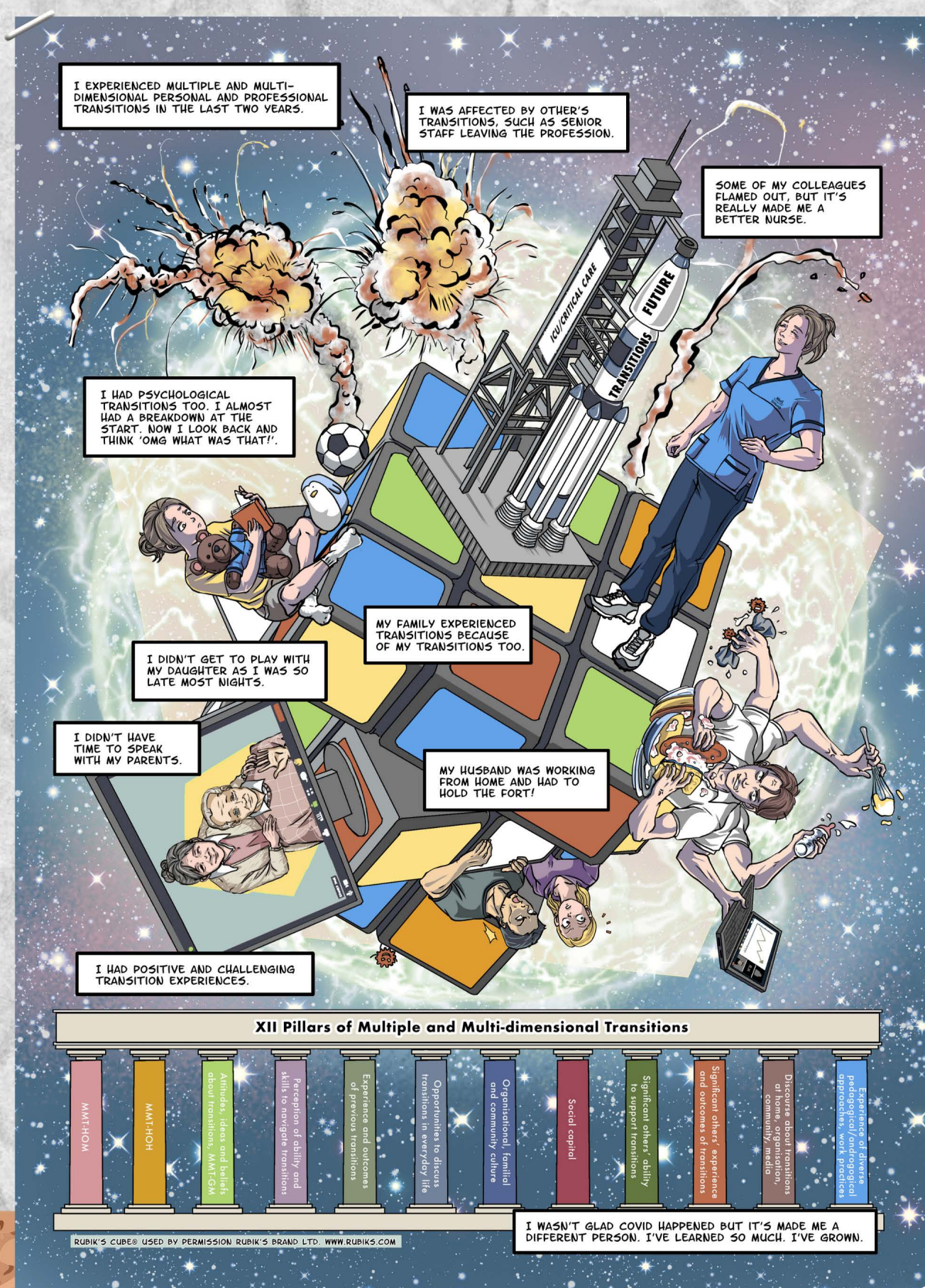
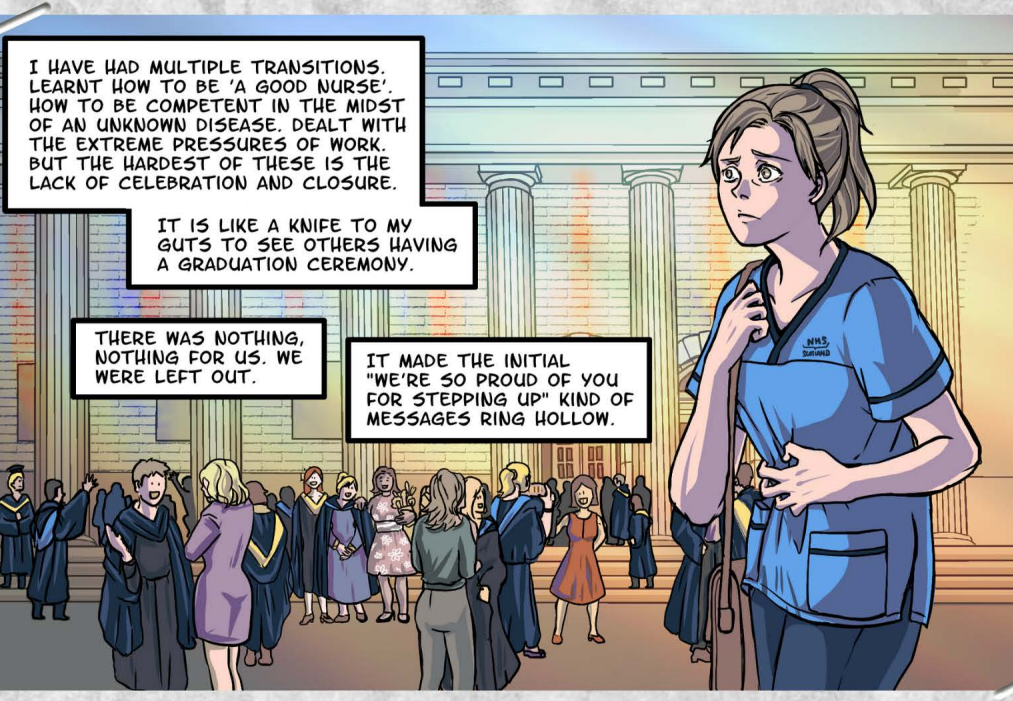
## RESULTS

### Theme 1: Timing of transitions from university to work

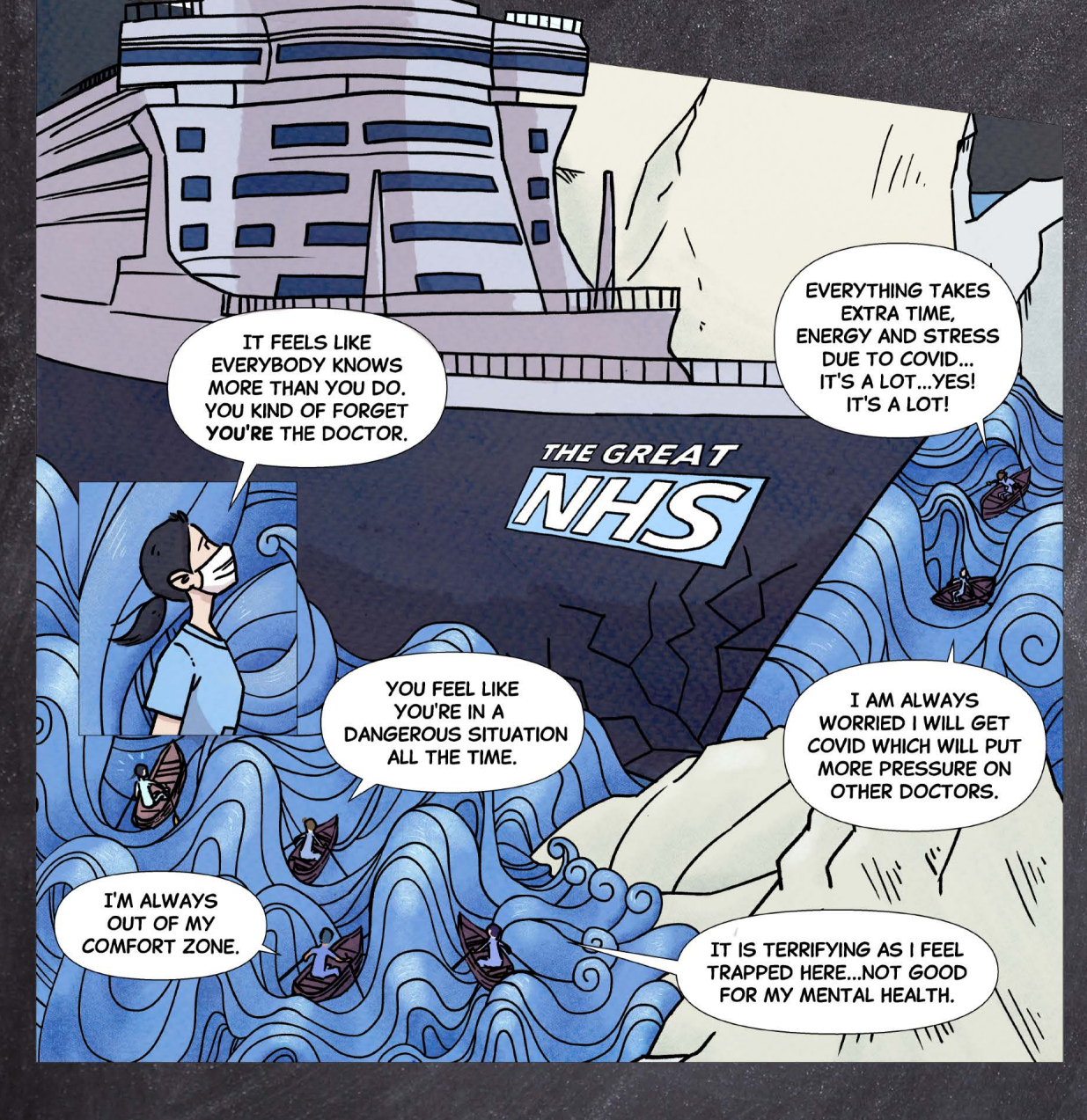
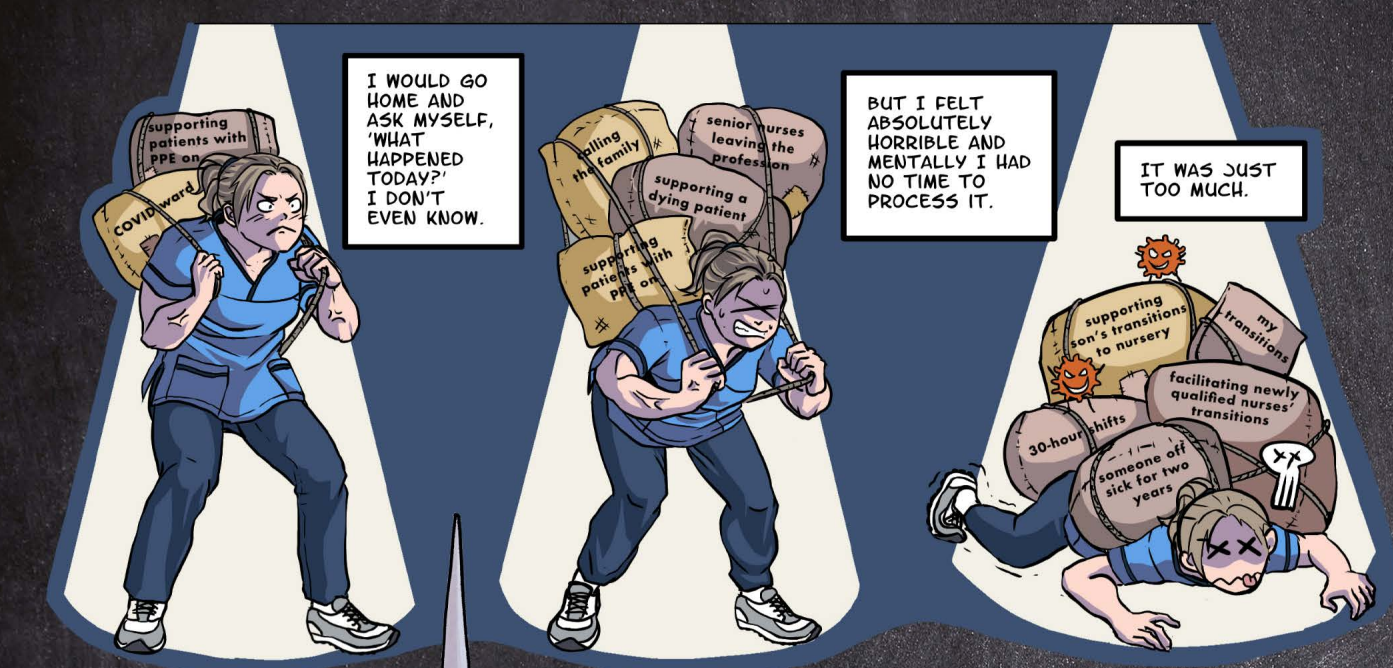
### Theme 2: Difference between expectations and realities



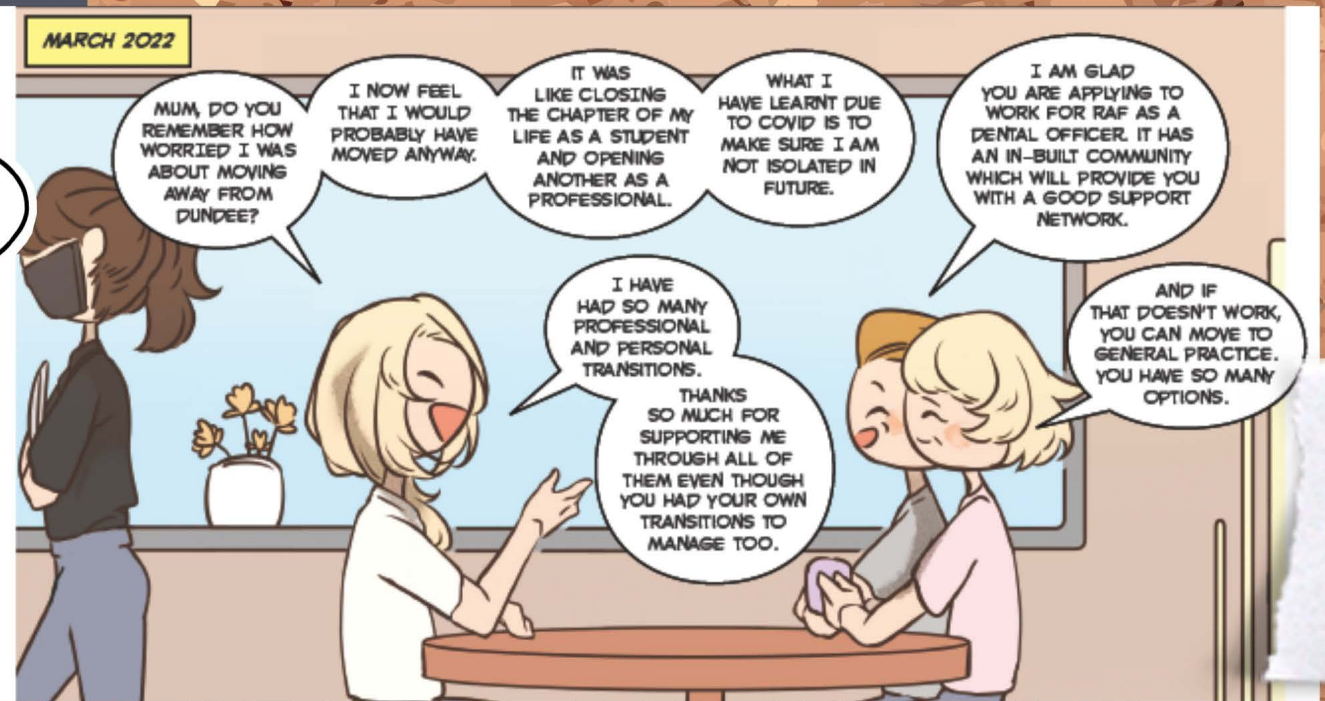
### Theme 3: Multiple and Multi-dimensional Transitions



### Theme 4: Impact of COVID on wellbeing



### Theme 5: Support systems during transitions



**References:**  
 Jindal-Snape, D. (2016). *A-Z of transitions*. Palgrave Macmillan.  
 Jindal-Snape, D. (2023). Multiple and multi-dimensional educational and life transitions: conceptualization, theorization and XII pillars of transitions. In R. Tierney, F. Rizvi and K. Ericikan (eds.) *International Encyclopedia of Education (4th ed)*, Amsterdam: Elsevier.  
 Jindal-Snape, D. (Ed.), Murray, C. (Ed.), Innes, N. (Ed.), Tooman, T., Al-Yaseen, W., Herd, D., Ding, C., Corrales, M., & Teo Lewen, J. (2022). *THE COVID ROLLERCOASTER: Multiple and Multi-dimensional Transitions of Healthcare Graduates*. UniVerse. <https://doi.org/10.20933/100001247>