

University of Dundee

## An ERK5-KLF2 signalling module regulates early embryonic gene expression and telomere rejuvenation in stem cells

Brown, Helen A.; Williams, Charles A. C.; Zhou, Houjiang; Rios-Szwed, Diana; Fernandez-Alonso, Rosalia; Mansoor, Saria

*Published in:*  
Biochemical Journal

*DOI:*  
[10.1042/BCJ20210646](https://doi.org/10.1042/BCJ20210646)

*Publication date:*  
2021

*Licence:*  
CC BY

*Document Version*  
Publisher's PDF, also known as Version of record

[Link to publication in Discovery Research Portal](#)

### *Citation for published version (APA):*

Brown, H. A., Williams, C. A. C., Zhou, H., Rios-Szwed, D., Fernandez-Alonso, R., Mansoor, S., McMulkin, L., Toth, R., Gourlay, R., Peltier, J., Dieguez-Martinez, N., Trost, M., Lizcano, J. M., Stavridis, M. P., & Findlay, G. M. (2021). An ERK5-KLF2 signalling module regulates early embryonic gene expression and telomere rejuvenation in stem cells. *Biochemical Journal*, 478(23), 4119-4136. Advance online publication. <https://doi.org/10.1042/BCJ20210646>

### **General rights**

Copyright and moral rights for the publications made accessible in Discovery Research Portal are retained by the authors and/or other copyright owners and it is a condition of accessing publications that users recognise and abide by the legal requirements associated with these rights.

- Users may download and print one copy of any publication from Discovery Research Portal for the purpose of private study or research.
- You may not further distribute the material or use it for any profit-making activity or commercial gain.
- You may freely distribute the URL identifying the publication in the public portal.

### **Take down policy**

If you believe that this document breaches copyright please contact us providing details, and we will remove access to the work immediately and investigate your claim.

Research Article

# An ERK5–KLF2 signalling module regulates early embryonic gene expression and telomere rejuvenation in stem cells

Helen A. Brown<sup>1,\*</sup>, Charles A.C. Williams<sup>1,\*</sup>, Houjiang Zhou<sup>1</sup>, Diana Rios-Szwed<sup>1</sup>, Rosalia Fernandez-Alonso<sup>1</sup>, Saria Mansoor<sup>1</sup>, Liam McMulkin<sup>1</sup>, Rachel Toth<sup>1</sup>, Robert Gourlay<sup>1</sup>, Julien Peltier<sup>1</sup>, Nora Dieguez-Martinez<sup>2</sup>, Matthias Trost<sup>1,†</sup>, Jose M. Lizcano<sup>2</sup>, Marios P. Stavridis<sup>3</sup> and  Greg M. Findlay<sup>1</sup>

<sup>1</sup>The MRC Protein Phosphorylation and Ubiquitylation Unit, School of Life Sciences, The University of Dundee, Dundee DD1 5EH, U.K.; <sup>2</sup>Departament de Bioquímica i Biologia Molecular and Institut de Neurociències, Universitat Autònoma de Barcelona, Barcelona, Spain; <sup>3</sup>Division of Cell and Developmental Biology, School of Life Sciences, The University of Dundee, Dundee DD1 5EH, U.K.

**Correspondence:** Greg M. Findlay (g.m.findlay@dundee.ac.uk)



The ERK5 MAP kinase signalling pathway drives transcription of naïve pluripotency genes in mouse Embryonic Stem Cells (mESCs). However, how ERK5 impacts on other aspects of mESC biology has not been investigated. Here, we employ quantitative proteomic profiling to identify proteins whose expression is regulated by the ERK5 pathway in mESCs. This reveals a function for ERK5 signalling in regulating dynamically expressed early embryonic 2-cell stage (2C) genes including the mESC rejuvenation factor ZSCAN4. ERK5 signalling and ZSCAN4 induction in mESCs increases telomere length, a key rejuvenative process required for prolonged culture. Mechanistically, ERK5 promotes ZSCAN4 and 2C gene expression via transcription of the KLF2 pluripotency transcription factor. Surprisingly, ERK5 also directly phosphorylates KLF2 to drive ubiquitin-dependent degradation, encoding negative feedback regulation of 2C gene expression. In summary, our data identify a regulatory module whereby ERK5 kinase and transcriptional activities bi-directionally control KLF2 levels to pattern 2C gene transcription and a key mESC rejuvenation process.

## Introduction

Embryonic Stem Cells (ESCs) can self-renew or differentiate along any lineage in the adult body, a property known as pluripotency [1]. The fundamental regulatory mechanisms which govern pluripotency are therefore of intense interest to exploit pluripotent cells in regenerative therapeutics [2]. Cellular signalling network activity plays a critical role in ESC decision-making, by implementing specific gene expression signatures to define developmental choice. Although many signalling networks relevant for ESC decision-making have been identified, it remains a challenge to understand the molecular and biological functions of critical ESC signalling pathways in regulating pluripotency and lineage-specific transcriptional networks [3].

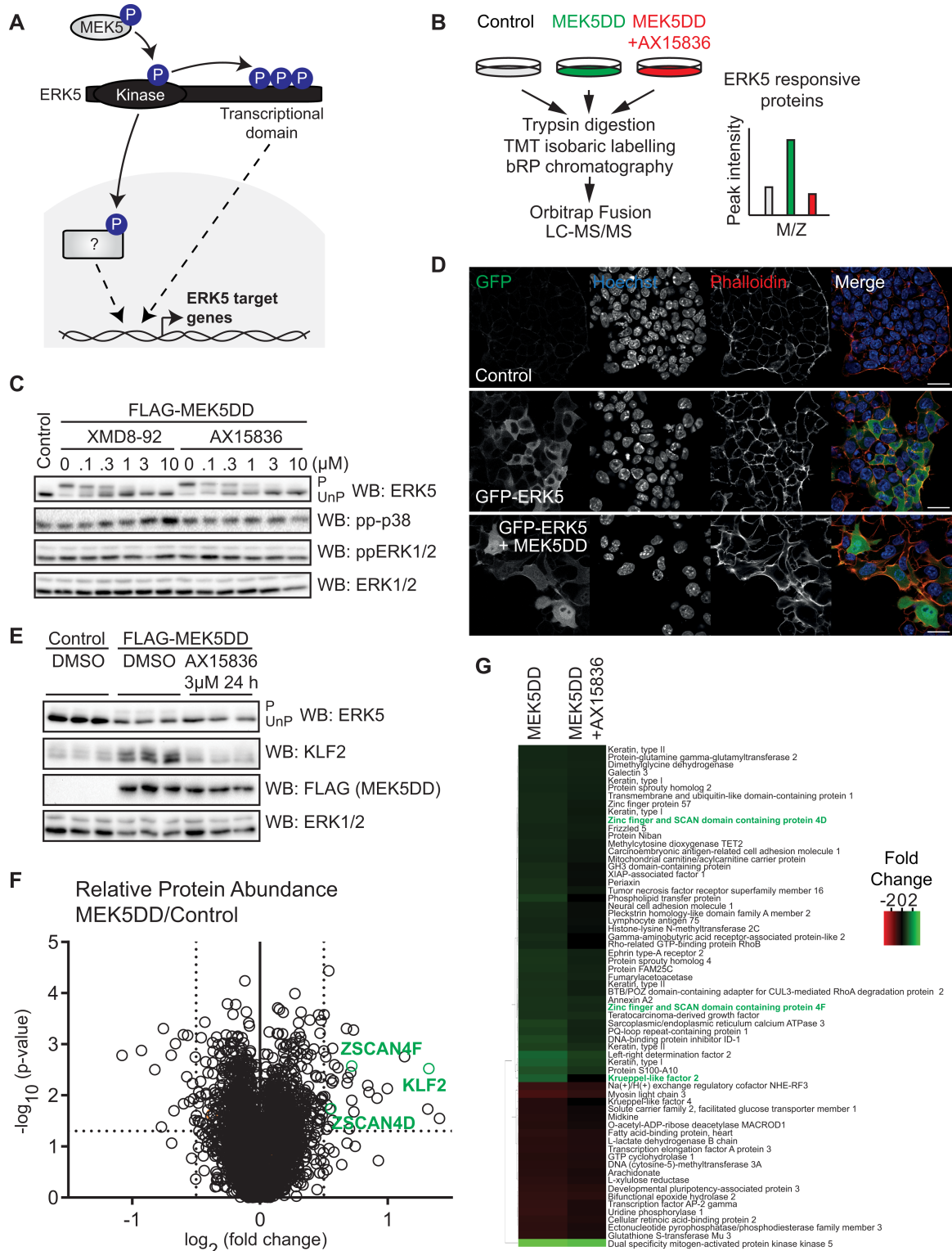
Recently, ERK5 (also known as BMK1) [4,5] was identified as a key regulator of the transition between naïve and primed pluripotency in mouse ESCs (mESCs) [6]. ERK5 signalling promotes the naïve state by driving the expression of pluripotency genes [6], although the wider molecular targets and biological functions of the ERK5 pathway in mESCs have not been identified. In this regard, ERK5 uniquely encodes a kinase domain and a putative transcriptional activation domain [7], both of which are required to support pluripotency gene expression [6]. Therefore, current data suggest that catalytic and transcriptional functions of ERK5 are to likely play a role in mediating ERK5 function in mESCs (Figure 1A). However, ERK5 substrates and wider transcriptional networks have not yet been explored in this context.

\*These authors contributed equally to this work.

†Present address: Biosciences Institute, Faculty of Medical Sciences, Newcastle University, Newcastle upon Tyne NE2 4HH, U.K.

Received: 3 September 2021  
 Revised: 8 November 2021  
 Accepted: 15 November 2021

Accepted Manuscript online:  
 15 November 2021  
 Version of Record published:  
 6 December 2021



**Figure 1. Quantitative analysis of ERK5-dependent proteome dynamics in mESCs.**

Part 1 of 2

(A) ERK is phosphorylated and activated by MEK5, leading to phosphorylation of transcription factor substrates and autophosphorylation of a putative C-terminal transcription activation domain. These mechanisms together are hypothesised to control ERK5-dependent gene expression and proteome dynamics. (B) Quantitative proteomics workflow: Wild-type mESCs were transfected (48 h) with empty vector (Control), constitutively active MEK5 (MEK5DD), or MEK5DD and treated with the

**Figure 1. Quantitative analysis of ERK5-dependent proteome dynamics in mESCs.**

Part 2 of 2

selective ERK5 inhibitor AX15836 (3  $\mu$ M, 24 h prior to lysis). Cells were lysed, proteins digested with trypsin, TMT labelled and analysed by LC–MS/MS. Proteins responsive to ERK5 signalling are predicted to be induced by MEK5DD, and this effect reversed by AX15836. (C) mESCs were transfected with MEK5DD and treated with indicated concentrations of selective ERK5 inhibitors XMD8-92 and AX15836. ERK5 activation was assessed by band-shift following ERK5 immunoblotting (P = phosphorylated active ERK5, UnP = unphosphorylated inactive ERK5), and p38 MAPK and ERK1/2 activation assessed by immunoblotting with phosphospecific antibodies. ERK1/2 levels are used as a loading control. (D) mESCs were transfected with empty vector (Control), GFP-ERK5 or GFP-ERK5 and MEK5DD before fixation. Anti-GFP antibody was used to determine ERK5 localisation. Phalloidin was used to visualise cell boundaries, and Hoechst to stain cell nuclei. Scale bar = 25  $\mu$ m. (E) mESCs were transfected with either empty vector control or MEK5DD (48 h) and treated with AX15836 (3  $\mu$ M, 24 h prior to lysis), with parallel samples used for proteomic analysis. ERK5 activation was assessed by band-shift following ERK5 immunoblotting (P = phosphorylated active ERK5, UnP = unphosphorylated inactive ERK5) and by KLF2 induction. MEK5DD expression was determined by immunoblotting for the FLAG tag. ERK1/2 was used as a loading control. (F) mESCs were transfected with either empty vector control or MEK5DD (48 h) and treated with either DMSO or AX15836 (3  $\mu$ M, 24 h prior to lysis), and relative protein abundance quantified by mass-spectrometry. Volcano plot shows  $\log_2$  (fold change) of protein abundance against  $-\log_{10}$  ( $P$ -value). Thresholds were set as  $>0.5 \log_2$  (fold change), and  $P$ -value  $<0.05$ . KLF2 (green) is shown as a positive control. Expressed constitutively active MEK5DD is omitted from the volcano plot for clarity. (G) Abundance of proteins above  $>0.5 \log_2$  (fold change) and  $P$ -value  $<0.05$  thresholds relative to control shown in (F) represented by heat map.

Here, we use state-of-the-art quantitative proteomics to identify the ERK5-responsive proteome in mESCs. Within a specific cohort of ERK5-dependent proteins is ZSCAN4, a key member of a network of early embryonic 2-cell stage specific (2C) genes [8] that promotes the attainment of naïve pluripotency [9,10] and stem cell ‘rejuvenation’ *in vitro* [11]. We show that ERK5 induction of the pluripotency transcription factor KLF2 mediates the expression of *Zscan4* and other 2C genes. Furthermore, ERK5 signalling and ZSCAN4 induction promote telomere elongation, a key process that contributes to mESC rejuvenation. Unexpectedly, we find that ERK5 also directly phosphorylates KLF2 at dual pSer/Thr-Pro motifs, which recruits a Cullin family E3 ubiquitin ligase to promote KLF2 ubiquitylation and proteasomal degradation. KLF2 phosphorylation thereby enables a negative feedback loop to suppress the expression of *Zscan4* and other 2C genes. In summary, our data provide molecular insight into ERK5 kinase and transcriptional functions in mESCs, which directionally modulate KLF2 levels to pattern early embryonic 2C gene transcription and a key mESC rejuvenation process.

## Results

### Quantitative proteomic profiling identifies ERK5 regulated proteins in mESCs

ERK5 signalling drives transcription of naïve pluripotency genes in mESCs (Figure 1A) [6]. However, the wider impact of the ERK5 pathway on gene expression and proteome dynamics in mESCs remains uncertain. To tackle this question, we set out to systematically identify proteins whose expression is regulated by ERK5 signalling. To this end, we developed a quantitative proteomics workflow employing complementary strategies to specifically activate and inhibit ERK5 signalling in mESCs (Figure 1B). As the ligands that activate ERK5 in mESCs are not yet known, we employed a constitutively active mutant of the specific upstream kinase MEK5 (MEK5DD) [12,13] to specifically activate ERK5, and the selective ERK5 inhibitors XMD8-92 [14] and AX15836 [15] to inhibit ERK5 kinase activity.

As proof-of-principle, we demonstrate highly sensitive manipulation of ERK5 activity using C-terminal autophosphorylation and resulting retarded electrophoretic mobility as a readout [13]. MEK5DD expression in mESCs activates ERK5, and this is reversed by treatment with the selective ERK5 inhibitors XMD8-92 and AX15836 (Figure 1C). Importantly, the related MAP kinases ERK1/2 and p38 are not significantly activated or inhibited by modulation of the ERK5 pathway (Figure 1C). Furthermore, ERK5 activation is accompanied by translocation to the nucleus (Figure 1D) and increased expression of the pluripotency transcription factor KLF2 (Figure 1E). Previous work identifies *Klf2* as an ERK5 target gene [6,16–19], where *Klf2* transcription is driven by the ERK5 transcriptional activation domain and ERK5-mediated phosphorylation of MEF2 transcription factors at the *Klf2* promoter [16]. Thus, these data confirm that our experimental approach selectively modulates ERK5 kinase activity and gene expression in mESCs.



These defined conditions for ERK5 activation and inhibition allowed us to conduct quantitative proteomic profiling to elucidate the ERK5-regulated proteome in mESCs. This experimental approach identified a total of 8732 proteins, of which 7639 were quantified by at least two unique peptides. The abundance of 66 proteins changes  $>0.5$  ( $\log_2$ ) upon ERK5 activation by MEK5DD (Figure 1F), indicating that ERK5 signalling selectively regulates proteome dynamics. Furthermore, ERK5 inhibition by AX15836 largely suppresses proteins that are induced upon ERK5 activation (Figure 1G), indicating a key role for ERK5 kinase activity. Interestingly, AX15836 has recently been shown to both inhibit ERK5 kinase activity and drive paradoxical activation of the transcriptional activation domain [20], which may explain the partial effect of AX15836 in reversing induction of some ERK5 induced proteins. KLF2, a key transcriptional target of ERK5 signalling [6,16–19], is significantly induced in response to ERK5 pathway activation as expected (Figure 1F,G). Amongst proteins whose expression is significantly induced by ERK5 signalling are ZSCAN4D and ZSCAN4F (Figure 1F,G), which are expressed in the early embryonic two-cell stage (2C) and play a central role in mESC genome stability and rejuvenation [8–11,21].

## The ERK5 pathway drives the expression of ZSCAN4 and other 2C-stage genes

As a functional connection between ERK5 signalling and ZSCAN4 has not been reported, we first set out to validate the role of ERK5 in regulating ZSCAN4 expression. Analysis of ZSCAN4 protein levels by immunoblotting confirms that ERK5 activation by MEK5DD induces ZSCAN4 expression, and this is reversed by treatment with AX15836 (Figure 2A). This mirrors the regulation of known ERK5 pathway target KLF2 (Figure 2A), confirming ZSCAN4 as a novel protein target of the ERK5 signalling pathway in mESCs.

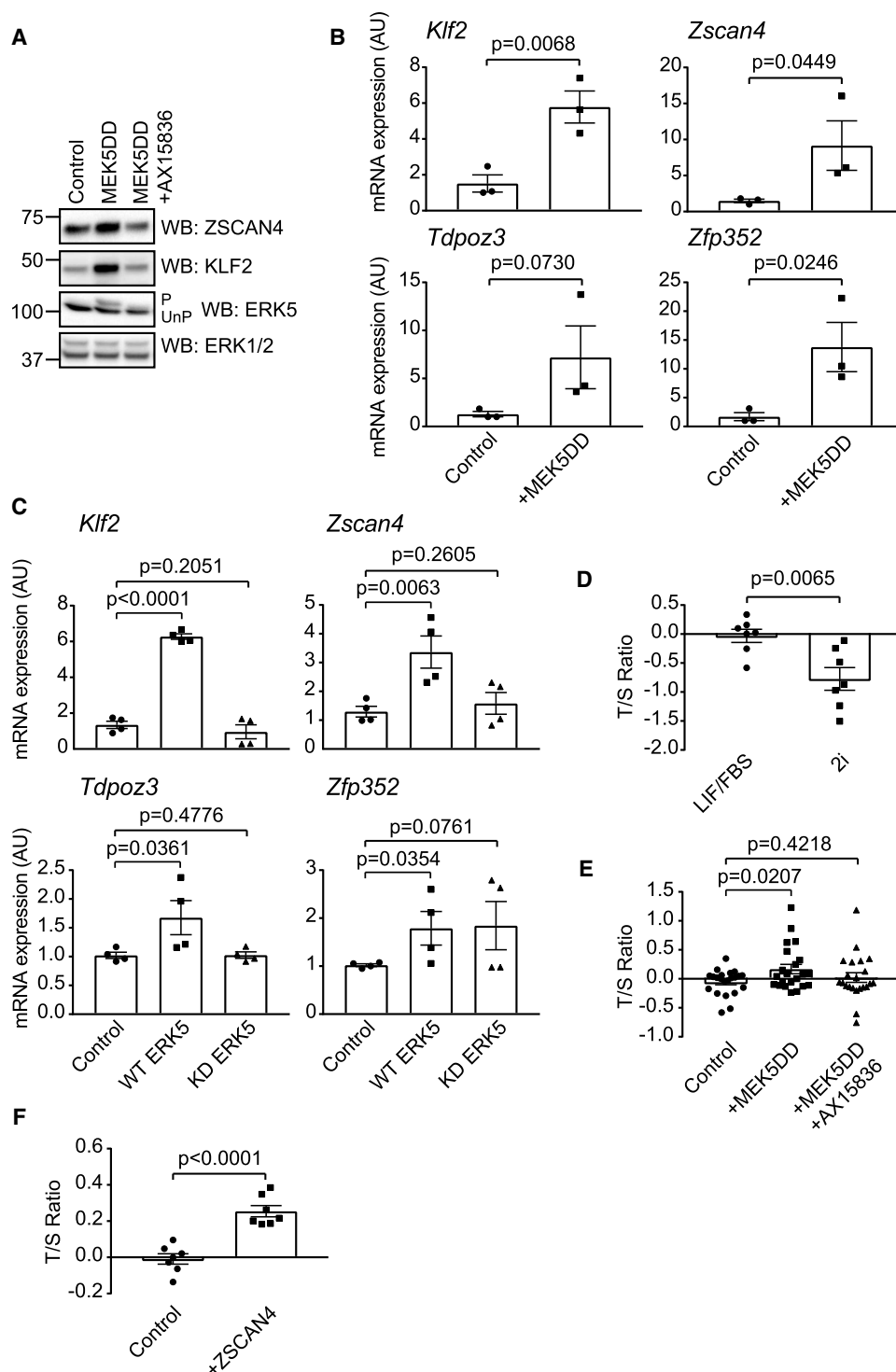
We then sought to determine the mechanism by which ERK5 signalling drives increased ZSCAN4 protein levels. As ERK5 signalling plays a key role in transcriptional regulation of stem cell-specific genes, we tested whether ERK5 activation induces expression of the *Zscan4* gene cluster. Activation of ERK5 by MEK5DD induces expression of the known target gene *Klf2* (Figure 2B). Similarly, ERK5 activation induces expression of *Zscan4* mRNA (Figure 2B), suggesting that ERK5 promotes transcription of the *Zscan4* gene cluster. Interestingly, ERK5 activation also induces expression of further genes that are specifically expressed at the early embryonic 2C stage, *Zfp352* and *Tdpoz3* (Figure 2B), suggesting that ERK5 may have a more general function in regulating early embryonic gene expression in mESCs.

Finally, we employed *Erk5/Mapk7<sup>-/-</sup>* mESCs [22] to confirm the role of ERK5 in the regulation of *Zscan4*/2C genes. *Erk5<sup>-/-</sup>* mESCs expressing MEK5DD express a basal level of *Zscan4*, *Zfp352* and *Tdpoz3* mRNAs (Figure 2C). The levels of *Zscan4* and *Tdpoz3* mRNA are strongly increased by expression of wild-type ERK5, in comparison with a kinase inactive mutant (D200A) of ERK5 (ERK5 KD; Figure 2C). Interestingly, *Zfp352* mRNA is increased by both wild-type ERK5 and ERK5 KD (Figure 2C), suggesting possible kinase independent functions of ERK5 in *Zfp352* gene regulation. Taken together, our data indicate that ERK5 signalling can regulate the expression of early embryonic genes in mESCs, including the stem cell rejuvenation factor ZSCAN4.

## ERK5-dependent ZSCAN4 induction drives telomere elongation

ZSCAN4 promotes mESC rejuvenation at least in part by promoting telomere maintenance [11,21]. Therefore, we asked whether ERK5 signalling to ZSCAN4 impacts on telomere length in mESCs. To quantify average telomere length, we employed an assay that determines the ratio of telomeric repeats to non-telomeric DNA [23]. As proof of principle for this approach, we performed a comparison of telomere length in mESCs cultured in MEK1/2 and GSK3 inhibitors (2i) [24] and those cultured in LIF/FBS. mESCs cultured in 2i have been shown to have shortened telomeres compared with LIF/FBS conditions [25]. Indeed, the telomere:non-telomere ratio is significantly lower for 2i mESCs than LIF/FBS mESCs (Figure 2D), confirming that this assay accurately reports perturbations in telomere length.

We then used this assay to investigate the function of ERK5 signalling in regulating telomere length. ERK5 activation by constitutively active MEK5DD induces a small but statistically significant increase in telomeric:non-telomeric ratio, which is not observed following co-treatment of mESC with the selective ERK5 inhibitor AX15836 (Figure 2E). Overexpression of ZSCAN4 in mESCs increases the telomeric:non-telomeric ratio (Figure 2F), confirming the key function of ZSCAN4 in regulating telomere length in this context. These data indicate that ERK5 pathway activation drives an increase in telomere length, and this is associated with ZSCAN4 induction.



**Figure 2. ERK5 promotes ZSCAN4/2-cell stage gene expression and mESC telomere elongation.**

Part 1 of 2

(A) mESCs were transfected with empty vector control or MEK5DD (48 h) and treated with either DMSO or 10  $\mu$ M AX15836 (24 h prior to lysis). ERK5 activation was assessed by band-shift following ERK5 immunoblotting (P = phosphorylated active ERK5, UnP = unphosphorylated inactive ERK5) and by KLF2 induction. Expression levels of ZSCAN4 were determined by immunoblotting. ERK1/2 was used as a loading control. (B) mESCs were transfected with either empty vector or MEK5DD. mRNA levels of *Klf2*, *Zscan4*, *Tdpoz3* and *Zfp352* were determined by qRT-PCR. *Klf2* induction is used as a positive control for ERK5 activity. Each data point represents one biological replicate calculated as an average of two technical replicates ( $n = 3$ ).

**Figure 2. ERK5 promotes ZSCAN4/2-cell stage gene expression and mESC telomere elongation.** Part 2 of 2

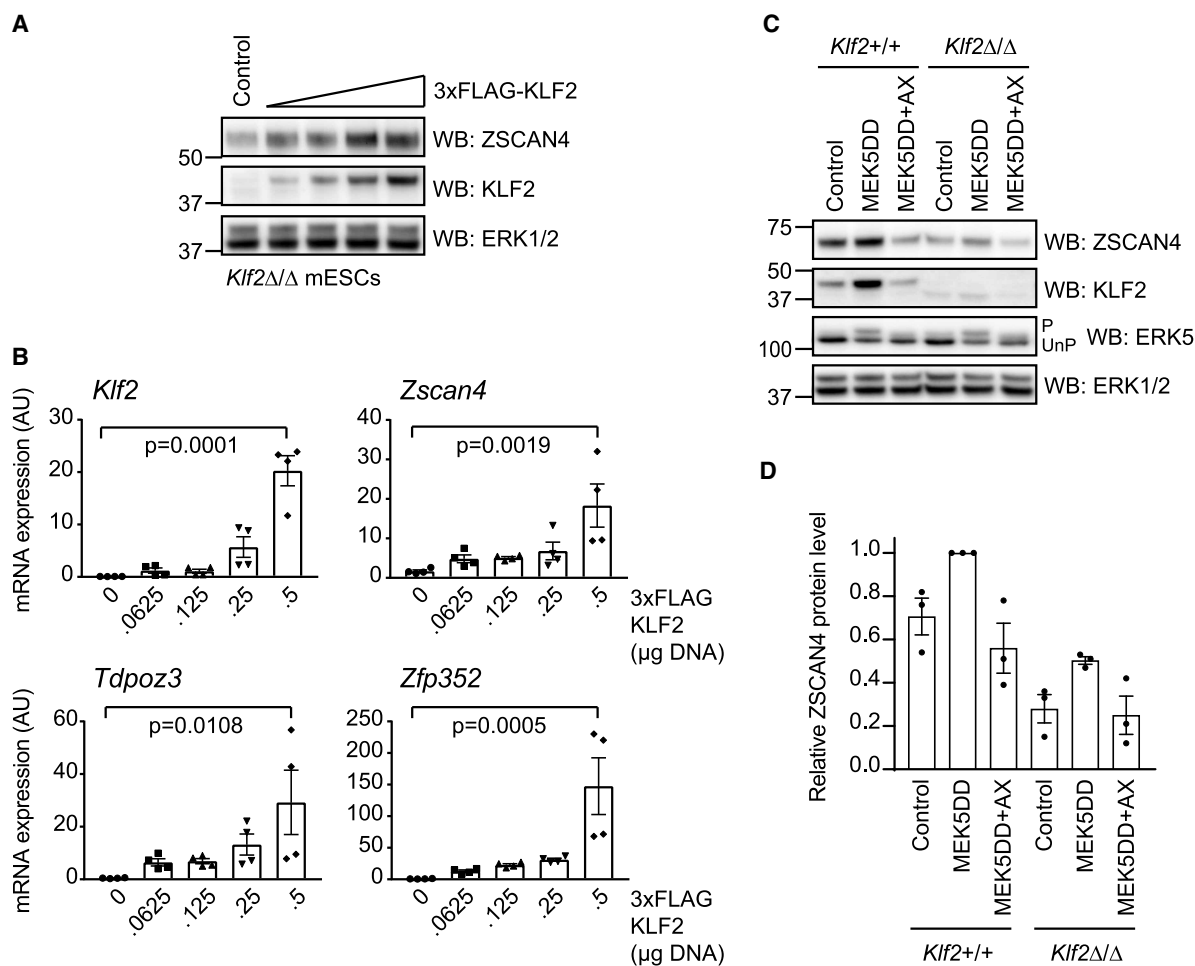
Error bars represent mean  $\pm$  SEM. Statistical significance was determined by student *t*-test. (C) *Erk5/Mapk7*<sup>-/-</sup> mESCs were transfected with MEK5DD and either empty vector, wild-type ERK5 or kinase inactive (D200A) ERK5. mRNA levels of *Klf2*, *Zscan4*, *Tdpoz3* and *Zfp352* were determined by qRT-PCR. *Klf2* induction is used as a positive control. Each data point represents one biological replicate calculated as an average of two technical replicates (*n* = 3). Error bars represent mean  $\pm$  SEM. Statistical significance was determined by student *t*-test. (D) Genomic DNA from mESCs maintained in LIF/FBS or 2i media was subjected to qPCR using primers against the telomeric repeats (T) and a single locus control region (S). T/S ratio was calculated to give the average relative telomere length. Each data point represents one biological replicate calculated as the average of three technical replicates (*n* = 7). A power calculation was used to determine sample size, which was randomly selected from biological replicates. Error bars represent mean  $\pm$  SEM. Statistical significance was determined by student *t*-test. (E) Genomic DNA from mESCs transfected with either empty vector or MEK5DD (48 h) and treated with either DMSO or 10  $\mu$ M AX15836 (24 h prior to lysis) was collected and subjected to qPCR using primers against the telomeric repeats (T) and a single locus control region (S). T/S ratio was calculated to give the average relative telomere length. Each data point represents one biological replicate calculated as the average of three technical replicates (*n* = 22). A power calculation was used to determine sample size, which was randomly selected from biological replicates. Error bars represent mean  $\pm$  SEM. Statistical significance was determined by student *t*-test. (F) Genomic DNA from mESCs transfected with either empty vector or ZSCAN4 (48 h) was collected and subjected to qPCR using primers against the telomeric repeats (T) and a single locus control region (S). T/S ratio was calculated to give the average relative telomere length. Each data point represents one biological replicate calculated as the average of three technical replicates (*n* = 7). A power calculation was used to determine sample size, which was randomly selected from biological replicates. Error bars represent mean  $\pm$  SEM. Statistical significance was determined by student *t*-test.

## The ERK5–KLF2 transcriptional axis controls *Zscan4/2C* gene expression

A key question arising from our results concerns the mechanism by which ERK5 signalling drives ZSCAN4 expression to promote telomere maintenance. As shown previously, a major transcriptional target of ERK5 in mESCs is the KLF2 transcription factor (Figure 1F). Therefore, we tested the hypothesis that transcriptional induction of KLF2 is a critical mechanism by which ERK5 signalling drives the expression of *Zscan4* and other 2C genes. To this end, we used CRISPR/Cas9 gene editing to generate mESCs in which expression of wild-type KLF2 is suppressed (*Klf2* <sup>$\Delta\Delta$</sup>  mESCs). In these cells, ZSCAN4 is expressed at a low level, and this is robustly enhanced by the expression of wild-type KLF2 (Figure 3A). Expression of *Zscan4*, *Zfp352* and *Tdpoz3* mRNAs is also increased by re-introduction of wild-type KLF2 (Figure 3B), strongly suggesting that ERK5 signalling regulates expression of ZSCAN4/2C genes via KLF2-dependent transcriptional induction. Consistent with this notion, induction of ZSCAN4 expression by ERK5 activation is blunted in *Klf2* <sup>$\Delta\Delta$</sup>  mESCs when compared with wild-type mESCs expressing endogenous levels of KLF2 (Figure 3C). However, ERK5-dependent ZSCAN4 induction is not completely abolished in *Klf2* <sup>$\Delta\Delta$</sup>  mESCs (Figure 3D), consistent with possible residual expression of full-length KLF2 and/or a truncated KLF2 variant (Figure 3C). Taken together, our results indicate that the ERK5–KLF2 axis promotes expression of *Zscan4* and other 2C early embryonic genes.

## ERK5 directly phosphorylates KLF2 at multiple pSer/Thr-Pro motifs

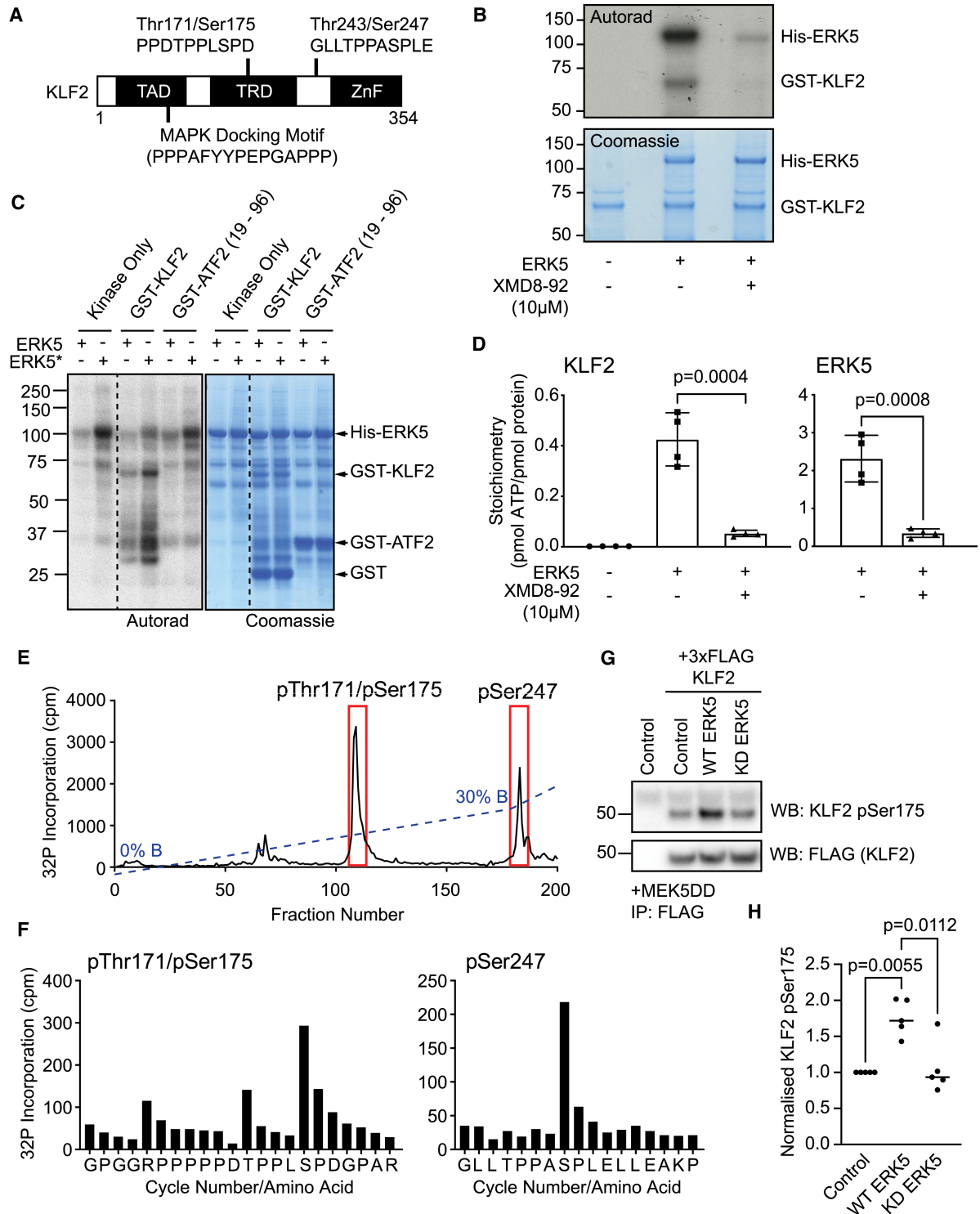
We have demonstrated that KLF2 is a transcriptional target of the ERK5 pathway in the regulation of ZSCAN4/2C genes. However, we next explored whether ERK5 might regulate KLF2 via other mechanisms. KLF2 comprises a predicted N-terminal MAP kinase docking motif and phosphomotifs that can be phosphorylated by CMGC family kinases, particularly the MAP kinase family (Figure 4A). This raised the intriguing possibility that ERK5 may additionally regulate KLF2 by direct phosphorylation. We therefore tested whether recombinant ERK5 phosphorylates recombinant KLF2 *in vitro*. ERK5 which is phosphorylated and activated by MEK5 in insect cells and then purified, directly phosphorylates recombinant GST–KLF2 *in vitro* (Figure 4B). GST–KLF2 phosphorylation is ablated by pre-treatment of the kinase assay with the selective ERK5 inhibitor XMD8-92 (Figure 4B), indicating that trace contaminant kinases are not responsible for KLF2 phosphorylation. Activated ERK5 does not efficiently phosphorylate GST–ATF2 19–96, confirming that the observed phosphorylation is specific for KLF2 and not the GST tag (Figure 4C). Furthermore, we show that ERK5 phosphorylates KLF2 to high stoichiometry of up to 0.5 pmol phosphate/pmol protein (Figure 4D), as might be expected for a bona fide ERK5 substrate.



**Figure 3. ERK5 signaling to KLF2 regulates ZSCAN4/2-cell stage genes.**

(A) *Klf2* $\Delta\Delta$  mESCs were transfected with either empty vector or increasing concentrations of 3xFLAG-KLF2. Expression levels of KLF2 and ZSCAN4 were determined by immunoblotting. ERK1/2 was used as a loading control. (B) *Klf2* $\Delta\Delta$  mESCs were transfected with either empty vector or increasing concentrations of 3xFLAG-KLF2. Levels of *Klf2*, *Zscan4*, *Tdpoz3* and *Zfp352* mRNAs were determined by qRT-PCR. Each data point represents one biological replicate calculated as an average of two technical replicates ( $n = 4$ ). Error bars represent mean  $\pm$  SEM. Statistical significance was determined by one-way ANOVA. (C) Wild-type (*Klf2* $^{+/+}$ ) and *Klf2* $\Delta\Delta$  mESCs were transfected with either empty vector or MEK5DD (48 h) and treated with DMSO or 10  $\mu$ M AX15836 (24 h prior to lysis). ERK5 activation was assessed by band-shift following ERK5 immunoblotting (P = phosphorylated active ERK5, UnP = unphosphorylated inactive ERK5), and by KLF2 induction. Expression levels of KLF2 and ZSCAN4 were determined by immunoblotting. ERK1/2 was used as a loading control. (D) ZSCAN4 levels from replicate wild-type (*Klf2* $^{+/+}$ ) and *Klf2* $\Delta\Delta$  mESC samples represented in Figure 3C were quantified using Bio-Rad ImageLab software. Each individual data point represents one biological replicate ( $n = 3$ ).

We next sought to identify the KLF2 sites which are phosphorylated by ERK5 *in vitro*. To this end, we subjected ERK5 phosphorylated KLF2 to tryptic digestion and HPLC analysis. Radioactive tracing identifies two major peaks of KLF2 phosphorylation (Figure 4E). Edman sequencing shows that the first peak of ERK5 phosphorylation corresponds to a dual phosphorylated Thr171/Ser175 peptide found within the KLF2 transcriptional repression domain, which contains the two Ser/Thr-Pro motifs characteristic of CMGC kinase substrates (Figure 4A). The second peak is a singly phosphorylated Thr243/Ser247 peptide consisting of two further Ser/Thr-Pro motifs towards the KLF2 DNA binding domain (Figure 4F). Interestingly, ERK5 primarily phosphorylates Ser247 but displays little activity towards Thr243 (Figure 4F), in contrast with phosphorylation of the Thr171/Ser175 motif. Therefore, ERK5 directly phosphorylates KLF2 on multiple, distinct Ser/Thr-Pro motifs characteristic of MAP kinase substrates.



**Figure 4. ERK5 directly phosphorylates KLF2 at multiple Ser/Thr-Pro motifs.**

(A) KLF2 contains a predicted MAP kinase docking motif within its transcriptional activation domain (TAD), and two TPPXSP MAP kinase consensus phosphorylation motifs, one within its transcriptional repression domain (TRD), and one between the TRD and zinc finger (ZnF) domain. (B) Recombinant GST-KLF2 was incubated with  $[\gamma\text{-}^{32}\text{P}]\text{-ATP}$  and active recombinant His-ERK5 in the presence or absence of 10  $\mu\text{M}$  of the selective ERK5 inhibitor XMD8-92. KLF2 and ERK5 phosphorylation were assessed by autoradiography and protein loading determined by coomassie blue staining. (C) Recombinant GST-KLF2 or GST-ATF2 (19–96) were incubated with  $[\gamma\text{-}^{32}\text{P}]\text{-ATP}$  and either unphosphorylated (ERK5) or phosphorylated active (ERK5\*)

Part 1 of 2



**Figure 4. ERK5 directly phosphorylates KLF2 at multiple Ser/Thr-Pro motifs.**

Part 2 of 2

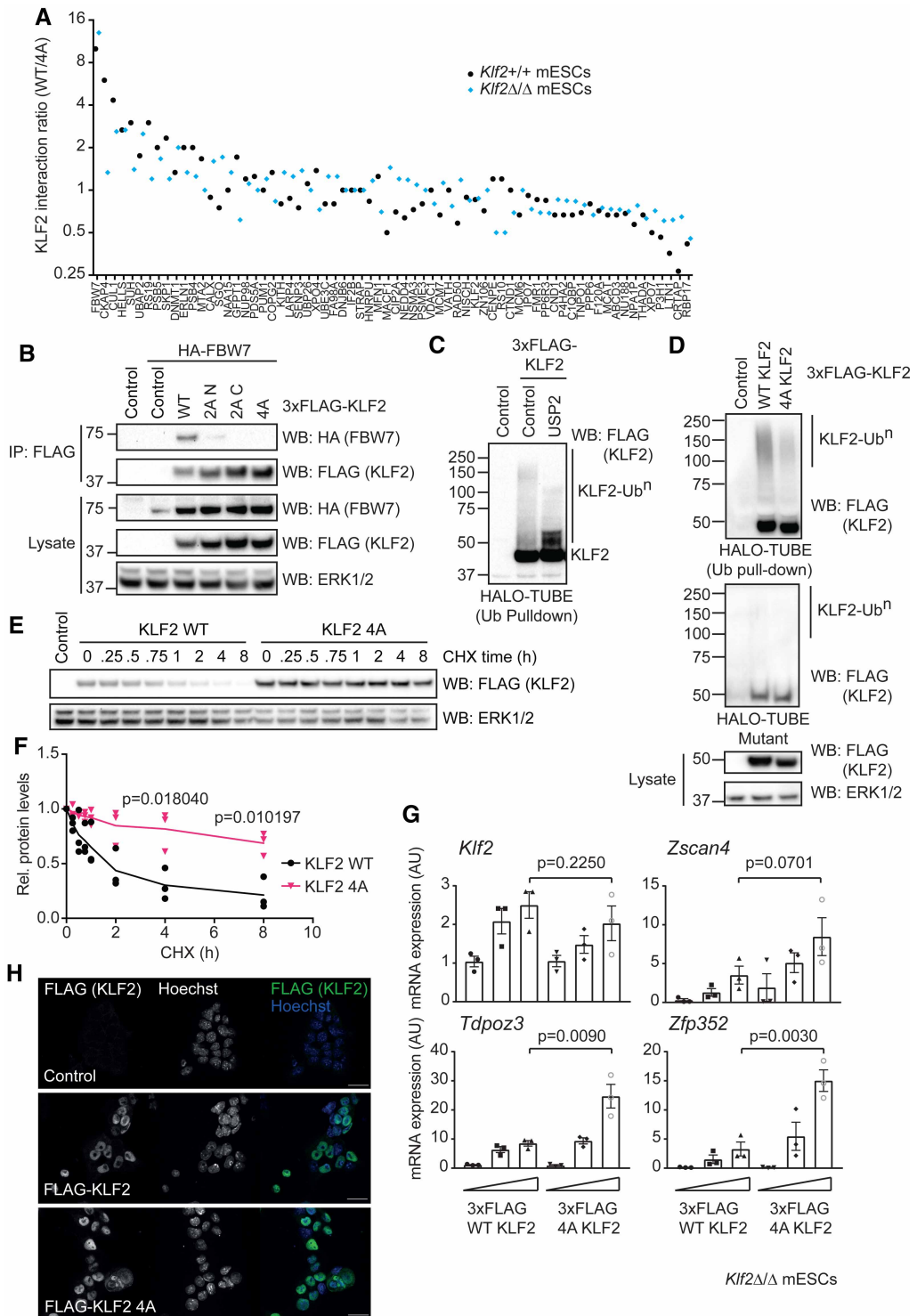
recombinant His-ERK5. KLF2, ATF2 and ERK5 phosphorylation was assessed by autoradiography and protein loading determined by coomassie blue staining. (D) Recombinant GST-KLF2 was incubated with [ $\gamma$ - $^{32}$ P]-ATP and active recombinant His-ERK5 in the presence or absence of 10  $\mu$ M of the selective ERK5 inhibitor XMD8-92. KLF2 and ERK5 bands were excised from SDS-PAGE and stoichiometry of phosphorylation determined ( $n = 4$ ). Data are represented as mean  $\pm$  SEM. Statistical significance was determined by student  $t$ -test. (E) Active recombinant ERK5 was incubated with recombinant GST-KLF2 and [ $\gamma$ - $^{32}$ P]-ATP and KLF2 trypsin digested before HPLC analysis.  $^{32}$ P phosphorylated KLF2 peptides were identified and the sequence determined by mass spectrometry. (F) Active recombinant ERK5 was incubated with recombinant GST-KLF2 and [ $\gamma$ - $^{32}$ P]-ATP.  $^{32}$ P phosphorylated tryptic peptides were analysed by mass-spectrometry and Edman sequencing to identify phosphorylated residues. (G) *Erk5/Mapk7*<sup>-/-</sup> mESCs were transfected with MEK5DD, 3xFLAG-KLF2, and either empty vector, wild-type ERK5 or kinase inactive (D200A) ERK5 (KD). FLAG-KLF2 was isolated by FLAG IP, and FLAG-KLF2 Ser175 phosphorylation and expression assessed by immunoblotting. (H) Normalised FLAG-KLF2 Ser175 phosphorylation levels were determined ( $n = 5$ ). Data are represented as mean  $\pm$  SEM. Statistical significance was determined by student  $t$ -test.

We then tested whether ERK5 activity promotes KLF2 phosphorylation at these motifs in mESCs. Using an ectopically-expressed 3xFLAG-tagged KLF2 reporter, which is not subject to transcriptional regulation by ERK5, we monitored KLF2 phosphorylation using a KLF2 Ser175 phospho-specific antibody, which is a major site of ERK5 phosphorylation (Figure 4F). Using this system, we observe that KLF2 is basally phosphorylated at Ser175 (Figure 4G), consistent with KLF2 phosphorylation by other kinases such as ERK1/2 [26]. However, co-expression of WT-ERK5, but not a kinase inactive mutant (D200A) of ERK5 (ERK5 KD) drives an increase in KLF2 Ser175 phosphorylation (Figure 4G). These data suggest that ERK5 can also phosphorylate KLF2 at Ser/Thr-Pro motifs in mESCs.

## KLF2 phosphorylation drives Cullin E3 ligase recruitment and ubiquitin-dependent degradation

Our findings then raised the question of mechanism(s) by which ERK5 phosphorylation impacts on KLF2 function. To address this, we performed affinity purification mass spectrometry to identify proteins that specifically interact with KLF2 in a manner that is dependent on Ser/Thr-Pro motif phosphorylation. Within the cohort of proteins that are enriched in immunoprecipitates of FLAG-tagged wild-type KLF2 compared with KLF2 in which the dual Ser/Thr-Pro phosphorylation motifs are mutated (KLF2-4A) are FBW7, a F-box WD40 containing Cullin substrate adaptor and CUL1, a Cullin family RING-finger E3 ubiquitin ligase (CRL; Figure 5A). Previous studies implicate ubiquitylation in KLF2 regulation in mESCs [26], and FBW7 has been shown to mediate KLF2 ubiquitylation in endothelial cells [27,28]. We validate the interaction between HA-tagged FBW7 and FLAG-KLF2 (Figure 5B) and confirm that mutation of either the Thr171/Ser175 or Thr243/Ser247 phosphorylation motifs (KLF2 2A-N or 2A-C respectively) or all four Ser/Thr-Pro sites (KLF2-4A) disrupts this interaction. This suggests that multiple KLF2 phosphorylation motifs are required for recruitment of FBW7, which is characteristic of phosphorylation dependent ubiquitylation by FBW7 CRL complexes [29]. These data therefore indicate that KLF2 phosphorylation promotes recruitment of a CRL E3 ubiquitin ligase. Interestingly, KLF2 Ser/Thr-Pro site mutants appear to show increased expression in mESCs (Figure 5B), suggesting that they are less susceptible to proteasomal degradation.

We then tested the role of dual Ser/Thr-Pro motifs in driving KLF2 ubiquitylation using UBQLN1 Tandem Ubiquitin Binding Element (TUBE) resin to specifically enrich ubiquitylated proteins. FLAG-KLF2 is poly-ubiquitylated in mESCs, as demonstrated by the high-molecular weight species detected in HALO-TUBE pull-downs (KLF2-Ub<sup>n</sup>; Figure 5C). Treatment with the broad-specificity deubiquitinase USP2 abolishes the KLF2-Ub<sup>n</sup> signal (Figure 5C), confirming that these high-molecular weight species are poly-ubiquitylated KLF2. Furthermore, mutational inactivation of dual Ser/Thr-Pro phosphorylation motifs (KLF2-4A) abolishes KLF2 ubiquitylation (Figure 5D), suggesting that ERK5 phosphorylation of KLF2 at Ser/Thr-Pro motifs promotes KLF2 ubiquitylation. KLF2 phosphorylation and ubiquitylation impacts on stability, as a cycloheximide time-course indicates that wild-type KLF2 is a relatively short-lived protein compared with KLF2 in which the Ser/Thr-Pro motifs are mutated (KLF2-4A; Figure 5E,F). These data therefore implicate ERK5 not only in transcriptional induction of the *Klf2* gene, but also in phosphorylation and resulting proteasomal degradation of the KLF2 protein product.



**Figure 5. KLF2 phosphorylation drives ubiquitylation and negative feedback control of ZSCAN4/2C genes.** Part 1 of 2  
**(A)** Wild-type (*Klf2*<sup>+/+</sup>) or *Klf2*<sup>Δ/Δ</sup> mESCs were transfected with either wild-type (WT) or T171A/S175A/T243A/S247A mutant (4A) 3xFLAG-KLF2. FLAG-KLF2 was isolated by FLAG IP, and interacting proteins identified by mass spectrometry. Spectral counting was used to rank proteins that preferentially interact with WT KLF2 (interaction ratio >1) or 4A KLF2 (interaction ratio <1). **(B)** mESCs were transfected with HA-FBW7 and either empty vector or the indicated 3xFLAG-KLF2 construct. WT = wild-type, 2A N = T171A/S175A, 2A C = T243A/S247A, 4A = T171A/S175A/T243A/S247A. FLAG-KLF2 was isolated by FLAG IP, and HA-FBW7 interaction determined by immunoblotting. ERK1/2 was used as a loading control. **(C)** mESCs were transfected

Downloaded from <http://portlandpress.com/biochemj/article-pdf/478/23/4119/925631/bj-2021-0646.pdf> by UK user on 17 December 2021

**Figure 5. KLF2 phosphorylation drives ubiquitylation and negative feedback control of ZSCAN4/2C genes.** Part 2 of 2 with either empty vector or 3xFLAG-KLF2 and extracts subjected to HALO-TUBE ubiquitin pull-down and incubated in the presence or absence of USP2 deubiquitinase. (D) mESCs were transfected with either empty vector, or 3xFLAG-KLF2 WT or 4A and cell extracts subjected to HALO-TUBE ubiquitin pull-down. Mutant HALO-TUBE beads unable to bind ubiquitin were used to confirm the observed signal can be attributed to ubiquitylated KLF2. ERK1/2 was used as a loading control. (E) mESCs were transfected with either empty vector, 3xFLAG-KLF2 WT or 4A and treated with cycloheximide for the indicated time prior to lysis. 3xFLAG KLF2 levels were assessed by immunoblotting, and ERK1/2 levels used as a loading control. (F) Quantification of KLF2 WT and 4A half-life from experimental replicates described in (E) ( $n = 3$ ). Data are represented as mean  $\pm$  SEM. Statistical significance was determined by student  $t$ -test. (G) *Klf2*<sup>ΔA</sup> mESCs were transfected with either empty vector or increasing concentrations of 3xFLAG-KLF2 WT or 4A (48 h). *Klf2*, *Zscan4*, *Tdp3* and *Zfp352* mRNA levels were determined by qRT-PCR. Each data point represents one biological replicate calculated as an average of two technical replicates ( $n = 3$ ). Data are represented as mean  $\pm$  SEM. Statistical significance was determined by student  $t$ -test. (H) mESCs were transfected with either empty vector, 3xFLAG-KLF2 WT or 4A (24 h), fixed and stained with anti-FLAG antibody to determine KLF2 localisation and Hoechst to stain nuclei. Scale bar = 25  $\mu$ m.

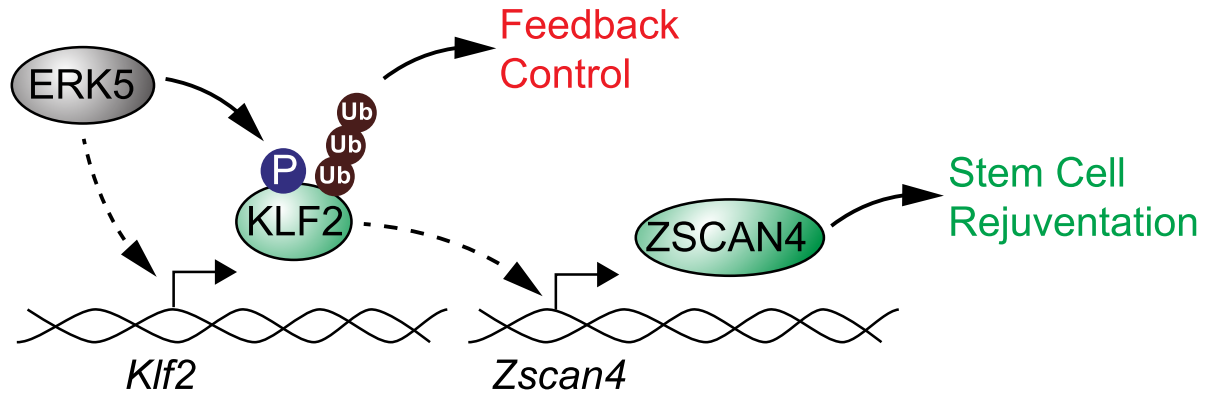
## ERK5 phosphorylation of KLF2 confers negative feedback regulation of ZSCAN4/2C gene expression

KLF2 transcriptional induction by ERK5 signalling promotes *Zscan4/2C* gene expression. However, ERK5 also directly phosphorylates KLF2 to drive ubiquitylation and degradation. This prompts the hypothesis that KLF2 phosphorylation by ERK5 confers a negative feedback loop to temper *Zscan4/2C* gene expression. To test this notion, we investigated the impact of the dual Ser/Thr-Pro phosphorylation motifs on KLF2-dependent transcriptional induction of *Zscan4/2C* genes. As shown previously, expression of wild-type KLF2 drives expression of *Zscan4*, *Zfp352* and *Tdp3* mRNAs (Figure 5G). However, mutation of the dual Ser/Thr-Pro motifs (KLF2-4A) further augments *Zscan4*, *Zfp352* and *Tdp3* expression, suggesting that KLF2 phosphorylation and ubiquitin-mediated turnover suppresses KLF2 transcriptional induction of *Zscan4* and other early embryonic genes. Wild-type KLF2 and KLF2-4A are predominantly, but not exclusively, nuclear localised in mESCs (Figure 5H), indicating that KLF2 phosphorylation does not impact on transcriptional activity by altering sub-cellular localisation. These results therefore suggest that ERK5 signalling promotes ZSCAN4 expression by KLF2 transcriptional induction, and KLF2 function is then tempered by a negative feedback loop dependent upon direct ERK5 phosphorylation and resulting ubiquitylation (Figure 6).

## Discussion

ERK5 is a unique kinase encoding both a kinase domain and a transcriptional activation domain. It was identified as a transcriptional activator of pluripotency genes in mESCs, including the *Klf2* transcription factor [22]. However, other functions of ERK5 in regulating gene expression and proteome dynamics in mESCs have not been systematically explored. We use quantitative proteomics to identify the ERK5-dependent proteome, which unveils a function for ERK5 in driving expression of the ZSCAN4 rejuvenation factor and other early embryonic two-cell stage genes. We show that the mechanism by which ERK5 induces expression of these genes is via KLF2, which is a transcriptional target of the ERK5 signalling pathway.

The ERK5 pathway is subject to complex regulation that we hypothesise play a critical role in establishing the regulatory dynamics of ZSCAN4 expression. Previous work has shown that ERK5 is phosphorylated and activated by MEK5, resulting in ERK5 nuclear translocation [30,31]. Once localised to the nucleus, ERK5 induces KLF2 transcription via a dual mechanism involving members of the MEF2 family of transcription factors. This involves direct phosphorylation and activation of MEF2 [13] and transcriptional co-activation of MEF2 target genes via the ERK5 C-terminal transcriptional activation domain [7,16]. Recent work has shown that the ERK5 kinase inhibitor AX15836 both inhibits ERK5 kinase activity and drives paradoxical activation of the C-terminal transcriptional activation domain [20], adding to the complexity of ERK5 signalling. Curiously, we now report that ERK5 also directly phosphorylates KLF2, which in contrast to ERK5 phosphorylation of MEF2, negatively regulates KLF2 by promoting ubiquitylation and degradation. Furthermore, the presence of ERK5 phosphorylation sites within the KLF2 transcriptional repression domain suggests that ERK5 may also modulate KLF2 transcriptional function, although this hypothesis has not yet been tested. Thus, ERK5 activation and nuclear translocation presumably enables both ERK5 dependent transcriptional induction



**Figure 6. ERK5 signalling to KLF2 confers dynamic regulation of rejuvenation/2-cell stage genes.**

The ERK5 pathway is subject to complex regulation that we propose plays a critical role in establishing the regulatory dynamics of ZSCAN4 expression. ERK5 activation drives *Klf2* transcription, which drives ZSCAN4/2C gene expression. However, ERK5 also directly phosphorylates KLF2, which negatively regulates KLF2 function by promoting ubiquitylation and degradation. Thus, ERK5 both promotes KLF2 transcriptional induction and negatively regulates KLF2 via direct phosphorylation, generating a dynamic system of amplification followed by negative feedback that accounts for oscillatory ZSCAN4 expression observed in mESCs.

of *Klf2* and direct phosphorylation and negative regulation of largely nuclear KLF2 protein. We propose this generates a dynamic system of amplification followed by negative feedback, which could account for oscillatory ZSCAN4 expression observed in mESCs [21].

We have shown that ERK5 signalling to ZSCAN4 promotes telomere maintenance i.e. increased telomere length in mESCs. However, the mechanism by which ZSCAN4 drives telomere maintenance remains a key question. The ZSCAN4 network leads to global demethylation of the mESC genome [32], and reportedly mediates telomere maintenance by suppressing DNA methylation to enable telomere extension via homologous recombination [33]. This is driven by ubiquitylation and proteasomal degradation of the key maintenance DNA methyltransferase, DNMT1, in a mechanism dependent on the E3 ubiquitin ligase UHRF1 [33]. Therefore, it will be important to investigate the function of ERK5 signalling to ZSCAN4 in suppression of DNMT1 expression, which could underpin increased telomere elongation activity observed upon ERK5 pathway activation. Of interest, we have shown previously and in this paper that ERK5 signalling acts to suppress expression of *de novo* DNA methyltransferases DNMT3A and DNMT3B [6].

Finally, the mechanism by which KLF2 controls ZSCAN4 has not yet been established. KLF2 genome occupancy studies have not identified KLF2 binding sites in the ZSCAN4 gene cluster, although this genomic region is underrepresented in such datasets. Recent data shows that Kruppel-like factors (KZFP factors) related to KLF2 promote activation of transposable element-based enhancers during zygotic genome activation, which in turn induces expression of early embryonic genes during development [34]. An exciting possibility is that this transposable element-based mechanism may be responsible for the expression of early embryonic genes downstream of the ERK5–KLF2 signalling axis in mESCs.

## Experimental procedures

Many reagents developed for this study are available by request at the MRC-PPU reagents & services website (<https://mrcppureagents.dundee.ac.uk/>).

## Antibodies and chemicals

Antibodies used were ERK5 (MRC-PPU Reagents & Services, Dundee), phospho-p38 (Thr180/Tyr182, Cell Signalling), phospho-ERK1/2 (Thr202/Tyr204, Cell Signalling), ERK1/2 (Santa Cruz Biotechnology), GFP (Abcam), KLF2 (Millipore), FLAG (Sigma), ZSCAN4 (Millipore), phospho-KLF2 (DSTT, Dundee), HA (Sigma). Inhibitors used were AX15836 (Tocris), XMD8-92 (N. Gray, Harvard), cycloheximide (Sigma).



## mESC culture, transfection and lysis

CCE mESCs were cultured on gelatin coated plates in media containing LIF, 10% FBS (Gibco), and 5% knock-out serum replacement (Invitrogen) unless otherwise stated. mESCs were transfected with pCAGGS expression vectors using Lipofectamine LTX (Life Technologies), selected with puromycin after 24 h and cultured for the stated times. For CRISPR/Cas9, mESCs were transfected with pX335 and pKN7 (Addgene) and selected, then either lysed or clones isolated. Cell extracts were made in lysis buffer (20 mM Tris [pH 7.4], 150 mM NaCl, 1 mM EDTA, 1% NP-40 [v/v], 0.5% sodium deoxycholate [w/v], 10 mM  $\beta$ -glycerophosphate, 10 mM sodium pyrophosphate, 1 mM NaF, 2 mM  $\text{Na}_3\text{VO}_4$ , and Roche Complete Protease Inhibitor Cocktail Tablets).

## Quantitative proteomics

### Protein extraction and digestion

mESCs were washed in PBS and then lysed in 8.5 M urea, 50 mM ammonium bicarbonate (pH 8.0) supplemented with protease inhibitors. Lysate was sonicated using Biosonicator operated at 50% power for 30 s on/off each on ice water bath for 5 min. The lysates were then centrifuged at 14 000 rpm for 10 min at 4°C and supernatants collected. Protein concentration of the lysate was determined by BCA protein assay. Proteins were reduced with 5 mM DTT at 55°C for 30 min and cooled to room temperature. Reduced lysates were then alkylated with 10 mM iodoacetamide at room temperature for 30 min in the dark. The alkylation reaction was quenched by the addition of another 5 mM DTT. After 20 min of incubation at room temperature, the lysate was digested using Lys-C with the weight ratio of 1 : 200 (Enzyme/lysate) at 37°C for 4 h. The samples were further diluted to 1.5 M Urea with 50 mM ammonium bicarbonate (pH 8.0), and the sequencing-grade trypsin was added with the weight ratio of 1 : 50 (enzyme/lysate) and incubated overnight at 37°C. The digest was acidified to pH 3.0 by addition of TFA to 0.2% and gently mixed at room temperature for 15 min; the resulting precipitates were removed by centrifugation at 7100 RCF for 15 min. The acidified lysate was then desalted using a C18 SPE cartridge (Waters) and the eluate was aliquoted into 100  $\mu\text{g}$  and dried by vacuum centrifugation. To check the digests, 1  $\mu\text{g}$  of each sample was analysed by mass spectrometry prior to TMT labelling.

### TMT labelling and high pH reverse phase fractionation

100  $\mu\text{g}$  of peptide from each sample was re-suspended into 100 mM Triethylammonium bicarbonate buffer (pH 8.5). 0.8 mg of TMT tag (Thermo) dissolved in 41  $\mu\text{l}$  of anhydrous acetonitrile was transferred to the peptide sample and incubated for 60 min at room temperature. The TMT labelling reaction was quenched with 5% hydroxylamine. 1  $\mu\text{g}$  of each labelled sample was analysed by mass spectrometry to assess the labelling efficiency before pooling. After checking the labelling efficiency, the TMT-labelled peptides were mixed together and dried by vacuum centrifugation. After drying, the mixture of TMT-labelled peptides was dissolved into 0.2% TFA and then desalted using a C18 SPE cartridge. The desalted peptides were subjected to orthogonal basic pH reverse phase fractionation, collected in 96-well plate and consolidated for a total of 20 fractions for vacuum dryness.

### LC-MS/MS analysis

Each fraction was dissolved in 0.1% FA and quantified by Nanodrop. 1  $\mu\text{g}$  of peptide was loaded on C18 trap column at a flow rate of 5  $\mu\text{l}/\text{min}$ . Peptide separations were performed over EASY-Spray column (C18, 2  $\mu\text{m}$ , 75 mm  $\times$  50 cm) with an integrated nano electrospray emitter at a flow rate of 300 nl/min. The LC separations were performed with a Thermo Dionex Ultimate 3000 RSLC Nano liquid chromatography instrument. Peptides were separated with a 180 min segmented gradient as follows: 7% ~ 25% buffer B (80% ACN/0.1% FA) in 125 min, 25% ~ 35% buffer B for 30 min, 35% ~ 99% buffer B for 5 min, followed by a 5 min 99% wash and 15 min equilibration with buffer A (0.1% FA).

Data acquisition on the Orbitrap Fusion Tribrid platform with instrument control software version 3.0 was carried out using a data-dependent method with multinotch synchronous precursor selection MS3 scanning for TMT-9plex tags. The mass spectrometer was operated in data-dependent most intense precursors Top Speed mode with 3 s per cycle. The survey scan was acquired from  $m/z$  375 to 1500 with a resolution of 120 000 resolving power with AGC target 400 000. The maximum injection time for full scan was set to 60 ms. For the MS/MS analysis, monoisotopic precursor selection was set to peptide. AGC target was set to 50 000 with the maximum injection time 120 ms. Charge states unknown and 1 or higher than 7 were excluded. The MS/MS analyses were performed by 1.2  $m/z$  isolation with the quadrupole, normalised HCD collision energy of 37%



and analysis of fragment ions in the Orbitrap using 15 000 resolving power with auto normal range scan starting from  $m/z$  110. Dynamic exclusion was set to 60 s. For the MS3 scan, the MS3 precursor population from MS2 scan ranging from  $m/z$  300–100 was isolated using the SPS waveform and then fragmented by HCD. The HCD normalised collision energy was set to 65. The MS3 scan were acquired from  $m/z$  100 to 500 with a resolution of 50 000 and AGC target 50 000/. The maximum injection time for full scan was set to 86 ms.

### Data processing and spectra assignment

Data from the Orbitrap Fusion were processed using Proteome Discoverer Software (version 2.2). MS2 spectra were searched using Mascot against a UniProt Mouse database appended to a list of common contaminants (10 090 total sequences). The searching parameters were specified as trypsin enzyme, two missed cleavages allowed, minimum peptide length of 6, precursor mass tolerance of 20 ppm, and a fragment mass tolerance of 0.05 Daltons. Oxidation of methionine and TMT at lysine and peptide N-termini were set as variable modifications. Carbamidomethylation of cysteine was set as a fixed modification. Peptide spectral match error rates were determined using the target-decoy strategy coupled to Percolator modelling of positive and false matches. Data were filtered at the peptide spectral match-level to control for false discoveries using a  $q$ -value cut off of 0.01, as determined by Percolator. For quantification, the signal-to-noise values higher than 10 for unique and razor peptides were summed within each TMT channel, and each channel was normalised with total peptide amount. Quantitation was further performed by adjusting the calculated  $P$ -values according to Benjamini–Hochberg. The significance regulated proteins with  $P$ -value <0.05 were further manually investigated with the standard deviations of biological replicates.

### Immunofluorescence microscopy

mESCs were seeded on gelatin-coated coverslips and transfected as required as described above. After 24 h, mESCs were fixed with 4% PFA (w/v) in PBS, before being permeabilised in 0.5% Triton X-100 in PBS (v/v) for 5 min at room temperature. Coverslips were then blocked with 1% Fish gelatin in PBS (w/v) and incubated with primary antibodies for 2 h at room temperature in a humid chamber. After three washes with PBS, secondary antibodies conjugated to fluorophores were diluted 1 : 500 in blocking buffer and incubated on coverslips for 1 h at room temperature in a humid chamber. Where cytoskeleton was being observed, Actin Red 555 reagent was added to the secondary antibody mix. After three washes with PBS, 0.1  $\mu$ g/ml Hoescht was incubated with the coverslips for 5 min at room temperature in a humid chamber to stain nuclei. After three more washes with PBS, coverslips were mounted onto cover slides using Fluorsave reagent (Millipore). Images were taken using a Leica SP8 confocal microscope and processed using FIJI and Photoshop CSC software (Adobe).

### RNA extraction and quantitative PCR

RNA was extracted using the OMEGA total RNA kit and reverse transcribed using iScript reverse transcriptase (Bio-Rad). qPCR was performed using TB Green Premix Ex Taq (Takara). The  $\Delta$ Ct method using *Gapdh* as a reference gene was used to analyse relative expression and the  $2^{-\Delta\Delta C_t}$  (Livak) method used to normalise to control. Primers used are listed in Table 1.

### Recombinant ERK5 kinase assay

200 ng pure active ERK5 was incubated with the indicated inhibitor in 50 mM Tris–HCl (pH 7.5), 0.1 mM EGTA, and 1 mM 2-mercaptoethanol. The reaction was initiated by adding 10 mM magnesium acetate, 100  $\mu$ M [ $\gamma$ - $^{32}$ P]-ATP (500 cpm/pmol), and 5  $\mu$ g of the indicated substrate (GST–KLF2 or GST) and incubated

Table 1 List of qRT-PCR primers

Gene	Forward	Reverse
Klf2	CTCAGCGAGCCTATCTTGCC	CACGTTGTTTAGGTCCTCATCC
Zscan4	CAGATGCCAGTAGACACCAC	GTAGATGTTCCCTTGACTTGC
Tdpoz3	TCTCCAATGTCCAATGCTTTCTG	ACGGTTCCAACATATGCTCACC
Zfp352	AAGTCCCACATCTGAAGAAACAC	GGGTATGAGGATTCACCCACA
Gapdh	CTCGTCCCGTAGACAAAA	TGAATTTGCCGTGAGTGG

at 30°C for 20 min. The assay was terminated by addition of LDS sample buffer. Stoichiometry of KLF2 and ERK5 phosphorylation was quantified by excising the specific band from a coomassie blue stained SDS–PAGE gel and <sup>32</sup>P incorporation measured by Cerenkov counting.

### KLF2 phosphorylation site mapping

GST–KLF2 purified from *E. coli* was incubated with activated ERK5 for 30 min at 30°C in kinase assay reaction buffer with 25 000 cpm/pmol ATP in a total reaction volume of 25 µl. The reaction was terminated by boiling with 1x LDS sample buffer plus reducing agent and subjected to electrophoresis on a NuPAGE 4–12% gel. The gel was coomassie stained and the band corresponding to substrate excised and cut into small cubes. From this stage, all steps were conducted in a laminar flow hood to prevent keratin contamination. Gel pieces were washed (10 min, 500 µl per wash) sequentially on a Vibrax shaking platform with ddH<sub>2</sub>O, 50% acetonitrile/ddH<sub>2</sub>O, 0.1 M NH<sub>4</sub>HCO<sub>3</sub> and 50% acetonitrile/50 mM NH<sub>4</sub>HCO<sub>3</sub>. Gel pieces were reduced further 10 mM DTT at 65°C for 45 min and alkylated with 50 mM iodoacetamide (Incubated in the dark for 30 min at room temperature). Gel pieces were then washed with 50 mM NH<sub>4</sub>HCO<sub>3</sub> and 50% acetonitrile/50 mM NH<sub>4</sub>HCO<sub>3</sub>. Once colourless, gel pieces were shrunk with acetonitrile for 15 min, the supernatant aspirated and gel pieces dried using a SpeedVac. Dry gel pieces were swollen with 25 mM Triethylammonium bicarbonate containing 5 µg/ml of Trypsin and incubated at 30°C overnight on a Thermomixer. After trypsinisation, an equivalent volume of acetonitrile was added to the digested gel pieces and incubated for 15 min more. Supernatant was transferred to a clean tube and dried in a SpeedVac. Further extraction of peptides from the gel pieces was achieved using 100 µl 50% acetonitrile with 2.5% formic acid, and incubated for 15 min at room temperature. This supernatant was combined with the dry peptides and again dried in a SpeedVac.

Digestion removed >95% of the <sup>32</sup>P from the gel pieces to the recovered dried peptides. Peptides were fractionated on a HPLC column (Vydac C18) equilibrated in 0.1% (w/v) trifluoroacetic acid (TFA), using a linear acetonitrile gradient at a flow rate of 0.2 ml/min. 100 µl fractions were collected and analysed by LC–MS/MS. The data from this was searched using Mascot (matrixscience.com) to identify Phospho (Ser/Thr), Phospho (Tyr), Oxidation (Met) and Dioxidation (Met). Radioactive fractions were sent to solid-phase Edman degradation for phosphorylation site identification using an Applied Biosystems 494C sequencer of the peptide coupled to Sequelon-AA membranes (Applied Biosystems).

### HALO-TUBE ubiquitin pull-down assay

HALO-tagged UBQLN1 Tandem Ubiquitin Binding Element (TUBE) (MRC-PPU R&S DU23799) is a tetramer of the UBQLN1 UBA ubiquitin binding domain (aa536–589) provided by Dr. A. Knebel (MRC-PPU, Dundee). A mutant TUBE incapable of binding ubiquitin (M557K, L584K) was also used. HALO-TUBE beads were prepared by washing 1 ml packed HALO resin three times with HALO wash buffer (50 mM Tris–HCl (pH 7.5), 0.5 M NaCl, 1% Triton-X100 (v/v)), resulting in a 1:4 slurry. The slurry was combined with 7 mg of HALO-TUBE or HALO-mutant TUBE and incubated on a rotating wheel at 4°C overnight. After five washes in 10 ml HALO wash buffer and then in 10 ml HALO storage buffer (50 mM Tris–HCl (pH 7.5), 150 mM NaCl, 0.1 mM EGTA, 270 mM Sucrose, 0.07% β-mercaptoethanol (v/v)), the beads were stored as a 20% slurry at 4°C and washed three times in lysis buffer immediately prior to use. To analyse ubiquitylation of a protein of interest, 10 µl washed packed beads were incubated with 1 mg clarified cell lysate for 3 h at 4°C with shaking. After three washes with lysis buffer, beads were analysed by SDS–PAGE and immunoblotting.

### Telomere qPCR assay

Average telomere length was determined using qPCR and quantifying the ratio of telomeric DNA repeats to a single-copy gene (acidic ribosomal phosphoprotein PO (36B4) gene. Cells were seeded in 12-well plates, genomic DNA extracted using DNeasy Blood and Tissue Kit (QIAGEN) according to the manufacturer's instructions. Primers were supplied by Sigma–Aldrich and listed in Table 2.

Each reaction for the telomere portion of the assay included 12.5 µl SYBR Green PCR Master Mix (Takara), 300 nM each of the forward and reverse primers, 20 ng genomic DNA, and enough double-distilled H<sub>2</sub>O to yield a 25 µl reaction. Three 20 ng samples of each DNA were placed in adjacent wells of a 96-well plate. An automated thermocycler (Prism 7000 Sequence Detection System, Applied Biosystems) was used with the following reaction conditions: 95°C for 10 min followed by 30 cycles of data collection at 95°C for 15 s and a 56°C anneal–extend step for 1 min. Each reaction for the 36B4 portion contained 12.5 µl SYBR Green PCR Master Mix (Takara), 300 nM forward primer, 500 nM reverse primer, 20 ng genomic DNA and enough

**Table 2 Primers used for telomere qPCR assay**

Primer	Forward	Reverse
Telomeric repeat	CGG TTT GTT TGG GTT TGG GTT TGG GTT TGG GTT TGG GTT	GGC TTG CCT TAC CTT TAC CCT TAC CCT TAC CCT TAC CCT
36B4	ACT GGT CTA GGA CCC GAG AAG	TCA ATG GTG CCT CTG GAG ATT

double-distilled H<sub>2</sub>O to yield a 25 µl reaction. Three 20 ng samples of each DNA were placed in adjacent wells of a 96-well plate. The thermocycler reaction conditions were: 95°C for 10 min, followed by 35 cycles of data collection at 95°C for 15 s, with 52°C annealing for 20 s, followed by extension at 72°C for 30 s. Telomere and 36B4 reactions were performed on separate plates. Therefore, to minimise variation due to location in plate, each sample was loaded into corresponding positions on each plate, such that the two plates had the same layout. Analysis was performed by subtracting 36B4 C<sub>t</sub> value from corresponding Telomere C<sub>t</sub> value and normalising to the average of the control conditions. These log ratios were then plotted using GraphPad Prism software, which was used to perform statistical tests. Original protocol for telomere qPCR protocol and data analysis is reported in [23].

## Statistical analysis

Data are presented as the average with error bars indicating standard error of the mean (SEM). Statistical significance of differences between experimental groups was assessed using a Student's *t*-test. Differences in averages were considered significant if  $P < 0.05$ . Representative western blots are shown. Power calculations for telomere qPCR assays were performed using an online tool (<http://powerandsamplesize.com/Calculators/Compare-2-Means/2-Sample-Equality>), with the following parameters: sample size nB = number of observed measurements for control group, Power = 0.80,  $P$ -value = 0.05, Group A mean = mean of observed measurements for test group, Group B mean = mean of observed measurements for control group, Standard deviation = calculated standard deviation based on observed measurements for test group, Sampling ratio = 1. Total sample size was then read off the graph at Power = 0.80 and observed test group mean. Total sample size was divided by two to give number of samples required for each group, and replicates were randomly selected for each sample group. A student *t*-test was performed on these sample groups to determine significance.

## Data Availability

The mass spectrometry proteomics data have been deposited to the ProteomeXchange Consortium via the PRIDE partner repository with the dataset identifier PXD024679. Other data generated and/or analysed during the current study are available from the corresponding authors on request.

## Competing Interests

The authors declare that there are no competing interests associated with the manuscript.

## Funding

H.A.B., D.R.-S. and S.M. were supported by a MRC DTP PhD studentship, C.A.C.W. was supported by a MRC-PPU prize studentship, H.Z., R.T. and R.G. were supported by the MRC-PPU core operating grant, R.F.-A. was supported by the MRC-PPU and L.M. was supported by the University of Dundee MSc programme. G.M.F. is supported by a Wellcome Trust/Royal Society Sir Henry Dale Fellowship (211209/Z/18/Z) and a MRC New Investigator Research Grant (MR/N000609/1).

## CRedit Author Contribution

**Greg Findlay:** Conceptualization, Data curation, Supervision, Funding acquisition, Writing — original draft, Project administration, Writing — review and editing. **Helen A. Brown:** Conceptualization, Data curation, Formal analysis, Investigation, Methodology, Project administration, Writing — review and editing.

**Charles AC Williams:** Conceptualization, Data curation, Formal analysis, Validation, Investigation, Methodology, Writing — review and editing. **Houjiang Zhou:** Data curation, Formal analysis, Investigation, Methodology.

**Diana Rios-Szwed:** Formal analysis, Investigation, Methodology. **Rosalía Fernandez-Alonso:** Data curation,

Formal analysis, Investigation, Methodology. **Saria Mansoor:** Formal analysis, Investigation.

**Liam McMulk:** Validation, Investigation. **Rachel Toth:** Resources. **Robert Gourlay:** Data curation, Formal analysis, Investigation, Methodology. **Julien Peltier:** Data curation, Formal analysis, Investigation, Methodology. **Nora Dieguez-Martinez:** Conceptualization, Data curation, Formal analysis, Investigation. **Matthias Trost:** Data curation, Funding acquisition, Project administration. **Jose M. Lizcano:** Funding acquisition, Project administration, Writing — review and editing. **Marios P. Stavridis:** Supervision, Project administration, Writing — review and editing.

## Acknowledgements

We thank the MRC-PPU Reagents & Services protein production team for recombinant proteins used in this study and Carmen Espejo-Serrano (GF lab, MRC-PPU) for data analysis.

## Abbreviations

ESCs, embryonic stem cells; SEM, standard error of the mean; TFA, trifluoroacetic acid; TUBE, Tandem Ubiquitin Binding Element.

## References

- Nichols, J. and Smith, A. (2009) Naive and primed pluripotent states. *Cell Stem Cell* **4**, 487–492 <https://doi.org/10.1016/j.stem.2009.05.015>
- Shi, Y., Inoue, H., Wu, J.C. and Yamanaka, S. (2017) Induced pluripotent stem cell technology: a decade of progress. *Nat. Rev. Drug Discov.* **16**, 115–130 <https://doi.org/10.1038/nrd.2016.245>
- Fernandez-Alonso, R., Bustos, F., Williams, C.A.C. and Findlay, G.M. (2017) Protein kinases in pluripotency-beyond the usual suspects. *J. Mol. Biol.* **429**, 1504–1520 <https://doi.org/10.1016/j.jmb.2017.04.013>
- Lee, J.D., Ulevitch, R.J. and Han, J. (1995) Primary structure of BMK1: a new mammalian map kinase. *Biochem. Biophys. Res. Commun.* **213**, 715–724 <https://doi.org/10.1006/bbrc.1995.2189>
- Zhou, G., Bao, Z.Q. and Dixon, J.E. (1995) Components of a new human protein kinase signal transduction pathway. *J. Biol. Chem.* **270**, 12665–9 <https://doi.org/10.1074/jbc.270.21.12665>
- Williams, C.A., Fernandez-Alonso, R., Wang, J., Toth, R., Gray, N.S. and Findlay, G.M. (2016) Erk5 is a key regulator of naive-primed transition and embryonic stem cell identity. *Cell Rep.* **16**, 1820–1828 <https://doi.org/10.1016/j.celrep.2016.07.033>
- Kasler, H.G., Victoria, J., Duramad, O. and Winoto, A. (2000) ERK5 is a novel type of mitogen-activated protein kinase containing a transcriptional activation domain. *Mol. Cell. Biol.* **20**, 8382–8389 <https://doi.org/10.1128/MCB.20.22.8382-8389.2000>
- Falco, G., Lee, S.L., Stanghellini, I., Bassey, U.C., Hamatani, T. and Ko, M.S. (2007) Zscan4: a novel gene expressed exclusively in late 2-cell embryos and embryonic stem cells. *Dev. Biol.* **307**, 539–550 <https://doi.org/10.1016/j.ydbio.2007.05.003>
- Hirata, T., Amano, T., Nakatake, Y., Amano, M., Piao, Y., Hoang, H.G. et al. (2012) Zscan4 transiently reactivates early embryonic genes during the generation of induced pluripotent stem cells. *Sci. Rep.* **2**, 208 <https://doi.org/10.1038/srep00208>
- Zhao, T., Fu, Y., Zhu, J., Liu, Y., Zhang, Q., Yi, Z. et al. (2018) Single-Cell RNA-Seq reveals dynamic early embryonic-like programs during chemical reprogramming. *Cell Stem Cell* **23**, 31–45 e7 <https://doi.org/10.1016/j.stem.2018.05.025>
- Amano, T., Hirata, T., Falco, G., Monti, M., Sharova, L.V., Amano, M. et al. (2013) Zscan4 restores the developmental potency of embryonic stem cells. *Nat. Commun.* **4**, 1966 <https://doi.org/10.1038/ncomms2966>
- English, J.M., Pearson, G., Hockenberry, T., Shivakumar, L., White, M.A. and Cobb, M.H. (1999) Contribution of the ERK5/MEK5 pathway to Ras/Raf signaling and growth control. *J. Biol. Chem.* **274**, 31588–31592 <https://doi.org/10.1074/jbc.274.44.31588>
- Kato, Y., Kravchenko, V.V., Tapping, R.I., Han, J., Ulevitch, R.J. and Lee, J.D. (1997) BMK1/ERK5 regulates serum-induced early gene expression through transcription factor MEF2C. *EMBO J.* **16**, 7054–7066 <https://doi.org/10.1093/emboj/16.23.7054>
- Yang, Q., Deng, X., Lu, B., Cameron, M., Fearn, C., Patricelli, M.P. et al. (2010) Pharmacological inhibition of BMK1 suppresses tumor growth through promyelocytic leukemia protein. *Cancer Cell* **18**, 258–267 <https://doi.org/10.1016/j.ccr.2010.08.008>
- Lin, E.C., Amantea, C.M., Nomanbhoy, T.K., Weissig, H., Ishiyama, J., Hu, Y. et al. (2016) ERK5 kinase activity is dispensable for cellular immune response and proliferation. *Proc. Natl Acad. Sci. U.S.A.* **113**, 11865–11870 <https://doi.org/10.1073/pnas.1609019113>
- Sohn, S.J., Li, D., Lee, L.K. and Winoto, A. (2005) Transcriptional regulation of tissue-specific genes by the ERK5 mitogen-activated protein kinase. *Mol. Cell. Biol.* **25**, 8553–8566 <https://doi.org/10.1128/MCB.25.19.8553-8566.2005>
- Parmar, K.M., Larman, H.B., Dai, G., Zhang, Y., Wang, E.T., Moorthy, S.N. et al. (2006) Integration of flow-dependent endothelial phenotypes by Kruppel-like factor 2. *J. Clin. Invest.* **116**, 49–58 <https://doi.org/10.1172/JCI24787>
- Sunadome, K., Yamamoto, T., Ebisuya, M., Kondoh, K., Sehara-Fujisawa, A. and Nishida, E. (2011) ERK5 regulates muscle cell fusion through Klf transcription factors. *Dev. Cell* **20**, 192–205 <https://doi.org/10.1016/j.devcel.2010.12.005>
- Morikawa, M., Koinuma, D., Mizutani, A., Kawasaki, N., Holmborn, K., Sundqvist, A. et al. (2016) BMP sustains embryonic stem cell self-renewal through distinct functions of different Kruppel-like factors. *Stem Cell Rep.* **6**, 64–73 <https://doi.org/10.1016/j.stemcr.2015.12.004>
- Lochhead, P.A., Tucker, J.A., Tatum, N.J., Wang, J., Oxley, D., Kidger, A.M. et al. (2020) Paradoxical activation of the protein kinase-transcription factor ERK5 by ERK5 kinase inhibitors. *Nat. Commun.* **11**, 1383 <https://doi.org/10.1038/s41467-020-15031-3>
- Zalzman, M., Falco, G., Sharova, L.V., Nishiyama, A., Thomas, M., Lee, S.L. et al. (2010) Zscan4 regulates telomere elongation and genomic stability in ES cells. *Nature* **464**, 858–863 <https://doi.org/10.1038/nature08882>
- Williams, C.A.C., Gray, N.S. and Findlay, G.M. (2017) A simple method to identify kinases that regulate embryonic stem cell pluripotency by high-throughput inhibitor screening. *J. Vis. Exp.* <https://doi.org/10.3791/55515>
- Callicott, R.J. and Womack, J.E. (2006) Real-time PCR assay for measurement of mouse telomeres. *Comp. Med.* **56**, 17–22 PMID:16521855

- 24 Ying, Q.L., Wray, J., Nichols, J., Battle-Morera, L., Doble, B., Woodgett, J. et al. (2008) The ground state of embryonic stem cell self-renewal. *Nature* **453**, 519–523 <https://doi.org/10.1038/nature06968>
- 25 Guo, R., Ye, X., Yang, J., Zhou, Z., Tian, C., Wang, H. et al. (2018) Feeders facilitate telomere maintenance and chromosomal stability of embryonic stem cells. *Nat. Commun.* **9**, 2620 <https://doi.org/10.1038/s41467-018-05038-2>
- 26 Yeo, J.C., Jiang, J., Tan, Z.Y., Yim, G.R., Ng, J.H., Goke, J. et al. (2014) Klf2 is an essential factor that sustains ground state pluripotency. *Cell Stem Cell* **14**, 864–872 <https://doi.org/10.1016/j.stem.2014.04.015>
- 27 Zhao, Y. and Sun, Y. (2013) The FBW7-KLF2 axis regulates endothelial functions. *Cell Res.* **23**, 741–743 <https://doi.org/10.1038/cr.2013.50>
- 28 Wang, R., Wang, Y., Liu, N., Ren, C., Jiang, C., Zhang, K. et al. (2013) FBW7 regulates endothelial functions by targeting KLF2 for ubiquitination and degradation. *Cell Res.* **23**, 803–819 <https://doi.org/10.1038/cr.2013.42>
- 29 Koepp, D.M., Schaefer, L.K., Ye, X., Keyomarsi, K., Chu, C., Harper, J.W. et al. (2001) Phosphorylation-dependent ubiquitination of cyclin E by the SCFFbw7 ubiquitin ligase. *Science* **294**, 173–177 <https://doi.org/10.1126/science.1065203>
- 30 Buschbeck, M. and Ullrich, A. (2005) The unique C-terminal tail of the mitogen-activated protein kinase ERK5 regulates its activation and nuclear shuttling. *J. Biol. Chem.* **280**, 2659–2667 <https://doi.org/10.1074/jbc.M412599200>
- 31 Gomez, N., Erazo, T. and Lizcano, J.M. (2016) ERK5 and cell proliferation: nuclear localization is what matters. *Front. Cell Dev. Biol.* **4**, 105 <https://doi.org/10.3389/fcell.2016.00105>
- 32 Eckersley-Maslin, M.A., Svensson, V., Krueger, C., Stubbs, T.M., Giehr, P., Krueger, F. et al. (2016) MERVL/zscan4 network activation results in transient genome-wide DNA demethylation of mESCs. *Cell Rep.* **17**, 179–192 <https://doi.org/10.1016/j.celrep.2016.08.087>
- 33 Dan, J., Rousseau, P., Hardikar, S., Veland, N., Wong, J., Autexier, C. et al. (2017) Zscan4 inhibits maintenance DNA methylation to facilitate telomere elongation in mouse embryonic stem cells. *Cell Rep.* **20**, 1936–1949 <https://doi.org/10.1016/j.celrep.2017.07.070>
- 34 Pontis, J., Planet, E., Offner, S., Turelli, P., Duc, J., Coudray, A., et al. (2019) Hominoid-specific transposable elements and KZFPs facilitate human embryonic genome activation and control transcription in naive human ESCs. *Cell Stem Cell* **24**, 724–35 e5 <https://doi.org/10.1016/j.stem.2019.03.012>