







*This article has been accepted for publication in Monthly Notices of the Royal Astronomical Society ©: 2022 The Authors. Published by Oxford University Press on behalf of the Royal Astronomical Society. All rights reserved.*

# Machine learning for galactic archaeology: a chemistry-based neural network method for identification of accreted disc stars

Thorold Tronrud<sup>1</sup>,   Patricia B. Tissera<sup>2,3</sup>,  Facundo A. Gómez<sup>4,5</sup>,  Robert J. J. Grand,<sup>6</sup>  
Ruediger Pakmor<sup>7</sup>,  Federico Marinacci<sup>8</sup> and Christine M. Simpson<sup>9,10</sup> 

<sup>1</sup>Department of Astrophysics, Universidad Andres Bello, Fernandez Concha 700, Las Condes, Santiago, Chile

<sup>2</sup>Institute of Astronomy, Pontificia Universidad Católica de Chile, Av. Vicuña Mackenna 4860, 782-0436 Macul, Santiago, Chile

<sup>3</sup>Centro de Astro-Ingeniería, Pontificia Universidad Católica de Chile, Av. Vicuña Mackenna 4860, 782-0436 Macul, Santiago, Chile

<sup>4</sup>Instituto de Investigación Multidisciplinar en Ciencia y Tecnología, Universidad de La Serena, Raúl Bitrán 1305, La Serena, Chile

<sup>5</sup>Departamento de Astronomía, Universidad de La Serena, Av. Juan Cisternas 1200 Norte, La Serena, Chile

<sup>6</sup>Instituto de Astrofísica de Canarias, Calle Via Lactea s/n, E-38205 La Laguna, Tenerife, Spain

<sup>7</sup>Max Planck Institut für Astrophysik, Karl-Schwarzschild-Straße, 1, D-85648 Garching Bei München, Germany

<sup>8</sup>Department of Physics and Astronomy, ‘Augusto Righi’, University of Bologna, via Gobetti 93/2, I-40129 Bologna, Italy

<sup>9</sup>Enrico Fermi Institute, The University of Chicago, Chicago, IL 60637, USA

<sup>10</sup>Department of Astronomy and Astrophysics, The University of Chicago, Chicago, IL 60637, USA

Accepted 2022 July 14. Received 2022 July 13; in original form 2022 June 3

## ABSTRACT

We develop a method (‘Galactic Archaeology Neural Network’, GANN) based on neural network models (NNMs) to identify accreted stars in galactic discs by only their chemical fingerprint and age, using a suite of simulated galaxies from the Auriga Project. We train the network on the target galaxy’s own local environment defined by the stellar halo and the surviving satellites. We demonstrate that this approach allows the detection of accreted stars that are spatially mixed into the disc. Two performance measures are defined – recovery fraction of accreted stars,  $f_{\text{recov}}$  and the probability that a star with a positive (accreted) classification is a true-positive result,  $P(TP)$ . As the NNM output is akin to an assigned probability ( $P_a$ ), we are able to determine positivity based on flexible threshold values that can be adjusted easily to refine the selection of presumed-accreted stars. We find that GANN identifies accreted disc stars within simulated galaxies, with high  $f_{\text{recov}}$  and/or high  $P(TP)$ . We also find that stars in Gaia–Enceladus–Sausage (GES) mass systems are over 50 per cent recovered by our NNMs in the majority (18/24) of cases. Additionally, nearly every individual source of accreted stars is detected at 10 per cent or more of its peak stellar mass in the disc. We also demonstrate that a conglomerated NNM, trained on the halo and satellite stars from all of the Auriga galaxies provides the most consistent results, and could prove to be an intriguing future approach as our observational capabilities expand.

**Key words:** methods: data analysis – Galaxy: evolution.

## 1 INTRODUCTION

In the Lambda cold dark matter ( $\Lambda$ CDM) cosmological model, galaxies undergo mergers and interactions over the course of their evolution (Springel et al. 2008). These events affect their properties, such as morphology, star formation activity, and angular momentum distribution, as shown by numerous observational (e.g. Lambas et al. 2003; Patton et al. 2005; Ruiz-Lara et al. 2020; Gómez et al. 2021) and numerical works (e.g. Barnes & Hernquist 1991; Tissera 2000; Perez et al. 2006; Rupke, Kewley & Barnes 2010; Perez, Michel-Dansac & Tissera 2011; Purcell et al. 2011; Gómez et al. 2013; Amorisco 2017; Gómez et al. 2017; Moreno et al. 2019). As a consequence, mergers can also shape the properties of the stellar populations that form the different dynamical components: disc (e.g. Minchev et al. 2009; Quillen et al. 2009; Scannapieco et al. 2009;

Gómez et al. 2012, 2016), bulge (e.g. Gargiulo et al. 2019; Tissera et al. 2019), and stellar haloes (e.g. Bullock & Johnston 2005; Zolotov et al. 2010; Font et al. 2011; Tissera et al. 2013; Monachesi et al. 2019). In particular, the stellar halo is expected to be formed mainly by accreted stars with some contribution of *in situ* star in the inner regions (Tissera et al. 2013; Monachesi et al. 2016; Brook et al. 2020). It has been shown that the stellar mass function of the accreted satellites leave an imprint in the chemical properties of the stellar haloes so that more massive accretion will contribute with high-metallicity stars to the central regions while the outer regions will be dominated by the contribution of less massive satellites populated by low-metallicity stars (Cooper et al. 2010; Tissera et al. 2014, 2018; D’Souza & Bell 2018; Monachesi et al. 2019; Fattahi et al. 2020b). It is worth noting, however, that massive progenitors can also contribute the most metal-poor stars to the inner regions of the stellar halo (e.g. Deason, Mao & Wechsler 2016).

These studies have also shown that the stellar haloes are expected to be populated primarily by the stellar debris of these mergers, which

\* E-mail: [thor.tronrud@gmail.com](mailto:thor.tronrud@gmail.com)

may take the form of coherent tidal features (Martínez-Delgado et al. 2010; Vera-Casanova et al. 2021; Martin et al. 2022) or substructures thoroughly spatially mixed with the halo but which could be disentangled in phase space (e.g. Helmi et al. 1999). Observations have revealed in the stellar halo of the Milky Way (MW) both type of contributions, which support the claim that most of the stellar halo has been formed by satellite accretion, including substantial contribution from the Sagittarius stream (e.g. Bell et al. 2008; Koppelman et al. 2019). These interactions may lead stars from accreted substructures such as GES (Helmi et al. 2018; Belokurov et al. 2018) to be embedded in the galactic disc.

One of the goals of galactic archaeology is to use the properties of old stars to reconstruct the history of the MW (Helmi 2020). Accreted stars represent an opportunity to deepen our understanding of specific, far-reaching merger events, and to study the effect these have had on our galaxy’s present-day characteristics. First attempts to isolate stars and star clusters based on their motion (e.g. Roman 1950; Eggen, Lynden-Bell & Sandage 1962; Searle & Zinn 1978) have contributed to paradigm-shifting theories on galaxy formation that shape our field to this day. As techniques and methods for detecting stellar debris that originated outside the MW improve, the number of known mergers and interactions with the MW increases, and another tiny gap in our understanding of the Galaxy in which we live is filled. By uncovering ancient mergers, we can further test  $\Lambda$ CDM, and the predictions it makes about galaxy formation.

Previous efforts to identify accreted stars have resorted to a wide variety of techniques. Six-dimensional phase space can be used to identify stars that might have originated from outside the galaxy and formed streams around the MW (e.g. Helmi & White 1999; Gómez et al. 2010, 2012). Borsato, Martell & Simpson (2019) implemented data mining techniques to this phase-space data and recovered five stellar streams, one of which had been previously undiscovered. Malhan, Ibata & Martin (2018) used the STREAMFINDER algorithm to detect a rich network of streams in the MW’s stellar halo, including several new structures. Specific phase-space parameters, such as angular momentum and radial action can even be used to isolate stars from a single source (Feuillet et al. 2021). Alternatively, groups of stars can be separated based on how similar their abundance patterns are to those expected of dwarf galaxies (e.g. Font et al. 2006). Mackereth et al. (2018) performed this analysis on stars from the MW stellar halo, and determined that two-thirds of these stars display high orbital eccentricity, and enrichment patterns typical of massive MW dwarf satellites today. Their results imply that the MW’s accretion history of dwarf galaxies ( $10^{8.5} \leq M_{\text{sat}} \leq 10^9 M_{\odot}$ ) might have been atypically active at early times in comparison to other similar galaxies in their EAGLE sample. Fattahi, Navarro & Frenk (2020a) and Libeskind et al. (2020) report similar findings in both the Auriga and Hestia simulations, respectively.

However, Kruijssen et al. (2018) reconstructed the MW assembly history through globular clusters, based on a quantitative comparison with simulated analogues. They determined that the MW has undergone no mergers with a mass ratio above 0.25 since at least  $z \approx 4$ . They did, however, identify three massive satellite progenitors for the *ex situ* globular cluster population. This includes a galaxy dubbed ‘Kraken’, to which they attribute 40 per cent of *ex situ* globular clusters (Kruijssen et al. 2020; Callingham et al. 2022). Other techniques based on machine learning algorithms, such as boosted decision trees have been utilized on the scale of individual stars by Veljanoski et al. (2018) to identify MW halo stars. The model was executed on a selection of halo stars from

the Gaia Universe Model Snapshot (GUMS; Robin et al. 2012). When full phase-space data are available, at uncertainties similar to those of *Gaia*-DR2, 90 per cent of a halo stars are recovered with 30 per cent distance errors. While these works have focused primarily on halo stars and stellar streams, they display the variety of techniques that are currently available to scientists attempting to disentangle the formation history of our Galaxy. These results also show that, while there have been enormous advances in the study of the MW assembly, many aspects are still far from being fully understood.

Tidal debris from satellites might not only contribute to the stellar halo spheroid, but also to the primarily *in situ* thin and thick discs (Abadi et al. 2003; Pillepich, Madau & Mayer 2015; Ruchti et al. 2015; Bignone, Helmi & Tissera 2019; Fattahi et al. 2020b). While galactic stellar discs are expected to form mainly *in situ*, we also expect a contribution of accreted stars to be distributed by satellites that orbit the primary galaxy near its disc plane. Using a sample of 26 simulated MW mass-sized galaxies from the Auriga Project, Gómez et al. (2017) showed that, in one third of the models up to 8 per cent of disc stars, with a circularity parameter  $\epsilon_J$  above 0.7, had an accreted origin. These fractions increase with lower circularity thresholds, and can make up over 10 per cent of the stellar mass contained in the population of stars with a circularity above 0.4. These *ex situ* disc stars were found to be primarily contributed by one to three massive mergers. In many cases, one of these donor satellites contributed more than half of the *ex situ* disc mass. As such, the identification of their debris would allow us to constrain massive accretion events that could have played a significant impact on the subsequent evolution of the galaxy, even plausibly leaving behind a local dark matter (DM) rotating component. According to simulations, a fraction of the oldest population of disc stars in a galaxy is expected to have formed *ex situ* and have been imported by merger events (Gómez et al. 2017). Previous results showed similar trends. Using a set of MW mass-sized galaxies from the Aquarius Project, Tissera et al. (2013) reported a contribution of up to 15 per cent accreted stars in the disc. These stars were old, low-metallicity, and  $\alpha$ -enhanced compared to the *in situ* populations. In the case of the simulated MW analogue analysed by Bignone et al. (2019) in the EAGLE simulations, which was selected to satisfy several observational traits of the MW, a massive satellite galaxy resembling a GES event with  $M_{\star} = 3.9 \times 10^9 M_{\odot}$  impacted the disc. These authors reported a contribution of stars from this event to the thick disc representing 1.4 per cent of its final mass and 0.06 per cent of the thin disc component at  $z = 0$ .

The goal of this work is to introduce a training method based on neural network architecture that can be applied to classify accreted stars in galactic discs, based only on chemical abundances with no external information. This method can be used both to ‘clean’ stellar disc populations of accreted material to better constrain the process of galaxy formation, and also to isolate the accreted stellar matter for the purposes of galactic archaeology. Our method will be based on the chemical abundance information and stellar ages. Chemical abundance patterns have been shown to be useful to identify contributions from different stellar populations (Freeman & Bland-Hawthorn 2002). Our results will be expressed in terms of accreted star particle recovery, and precision, which are adaptations of commonly used metrics to gauge the performance of neural network models (NNMs). Neural networks have already been trained to label accreted stars by Ostdiek et al. (2020). They successfully trained their network on simulated kinematic data and applied to observed MW stars from the *Gaia* DR2 catalogue. The training set was built with simulated stars from the FIRE simulations (Hopkins et al. 2018), and applied to observational data using a technique

called transfer learning, which allows important selection criteria to be maintained, while adapting the NNM to the details of the new data set. This approach led to the discovery of the Nyx stream, made up of over 200 stars (Necib et al. 2020a,b).

In this work we consider a selection of simulated galaxies from the Auriga suite, covering a wide variety of stellar discs, all with different fractions of accreted material (shown in Table 2), and with a variety of accretion histories (Monachesi et al. 2019). We define the environment of a simulated galaxy as the system made by its stellar halo and surviving satellites from which the training sets will be defined. The diversity in assembly histories and galaxy environments allow us to test our network and training method more generally, to ensure it can provide useful output in these situations. Additionally, it permits us to study the situations that lead to poor predictive performance.

We also analyse the performance obtained by using a training set built from stars in a particular Auriga environment to detect accreted stars in stellar discs of different Auriga systems. Gómez et al. (2017) have previously explored how the assembly history of galaxies in the Auriga simulations impacts the accreted star particles in the disc, which has motivated our initial galaxy-by-galaxy approach. Additionally, we inspect the performance improvement of incorporating multiple galaxies' environments into a single training set, to examine the ability of a one-size-fits-all training set to describe each galaxy's unique history.

This paper is organized as follows. In Section 2, we describe the Auriga simulations. In Section 3, we explain the adopted neural networks, our model architecture, the training and evaluation method, and define the two performance metrics. Section 4 encompasses the analysis and main results on the performance of our method in general, and in several tests to assess the performance by using the defined indicators. This section also discusses the applicability of our method to the MW, as well as several cases that reflect two different weaknesses of our method. Finally, in Section 6, we present our conclusions, and the aim of our future work.

## 2 THE AURIGA SIMULATIONS

The Auriga Project (Grand et al. 2017) comprises of a set of 30 high resolution zoom-in simulations of late-type galaxies within MW mass-sized haloes, within the range of  $[10^{12} - (2 \times 10^{12})] M_{\odot}$ . The initial conditions were selected from a dark-matter-only cosmological simulation of the EAGLE project (Schaye et al. 2014; Crain et al. 2015), performed in a periodic cubic box of 100-Mpc side. The initial conditions are consistent with a  $\Lambda$ CDM cosmology with parameters  $\Omega_m = 0.307$ ,  $\Omega_b = 0.048$ ,  $\Omega_{\Lambda} = 0.693$ , and Hubble constant  $H_0 = 100 h \text{ km}^{-1} \text{ s}^{-1} \text{ Mpc}$ , and  $h = 0.6777$  (Ade et al. 2014). We worked with the Auriga simulations run at level 4, with DM particle mass of  $\sim 4 \times 10^5 M_{\odot}$  and initial baryonic cell mass resolutions of  $\sim 5 \times 10^4 M_{\odot}$ . DM haloes are identified in the simulations using a friends-of-friends algorithm (Davis et al. 1985), and bound substructures were iteratively detected with a SUBFIND algorithm applied (Springel 2005).

Gas was added to the initial conditions, and its evolution was calculated with the magneto-hydrodynamical code AREPO (Springel 2010). A variety of physical processes are followed such as gas cooling and heating, star formation, chemical evolution, the growth of supermassive black holes and supernova (SN) and AGN feedback (Marinacci, Pakmor & Springel 2013; Vogelsberger et al. 2013). The inter-stellar medium (ISM) is modelled with a two-phase equation of

state from Springel & Hernquist (2003). Star formation proceeds stochastically in gas with a density above  $n = 0.13 \text{ cm}^{-3}$ . Star formation and stellar feedback models include phenomenological winds (Marinacci et al. 2013), and chemical enrichment from SN Ia, SN II, and AGB stars, with yield tables from Thielemann et al. (2003) and Travaglio et al. (2004), Karakas (2010), and Portinari, Chiosi & Bressan (1998), respectively. Metals are removed from star forming gas through wind particles, which take  $1 - \nu_w$  of the metal mass of the gas cell that creates it, where  $\nu_w = 0.6$  is the metal loading parameter. The Auriga simulations track eight non-Hydrogen elements, He, C, O, N, Ne, Mg, Si, and Fe. Each star particle (hereafter 'star particles' and 'stars' will be used interchangeably when referring to simulated data) represents a single stellar population (SSP) with a Chabrier (2003) initial mass function (IMF). The model for baryonic physics has been calibrated to reproduce the stellar mass to halo mass function, the galaxy luminosity function, and the cosmic star formation rate density.

In the Auriga simulations, the chemical elements are distributed into the interstellar medium by star particles, which inject metals into nearby gas cells as they age. As a simulated galaxy evolves, so do the relative ratios of these elements, as previously enriched gas forms new stars. After 13.6 Gyr, the resulting abundance distributions encode events that took place during this evolution, the impact of which can be detected today. Grand et al. (2018) found that two distinct star formation pathways can lead to conspicuous gaps in radial metallicity distributions, consistent with trends noticed by Bovy et al. (2016).

While general trends can be mirrored between the Milky Way and simulated galaxies, the slopes and locations are not reproduced exactly. Grand et al. (2018) noted a difference in iso-age metallicity distributions, which they postulate to be due to SN II/SNe Ia timing (more detail in Marinacci et al. 2013), and the IMF (for which Gutcke & Springel 2018 have studied the impact on total galactic metallicity). On the basis of these previous results, the Auriga simulations provide suitable abundance distributions and galaxy assembly histories to study the impact of accreted stars in the discs.

In fact, the Auriga simulations have been successfully utilized for predictive purposes in a wide variety of situations. Among them, Monachesi et al. (2016) used the suite to study the metallicity profile of the stellar halo. Digby et al. (2019) found that the star formation history (SFH) trends with dwarf stellar mass in Auriga were in good agreement with those of Local Group galaxies.

In this work, we focus on 24 of the 30 Auriga galaxies. This subset was selected to not have a close companion at  $z = 0$ , and to contain a clear stellar disc. To this end, we excluded Auriga haloes 1, 8, 11, 25, 29, and 30. Data from each simulated galaxy will be referred to as AuID, where ID is the simulation number. Accreted stars, as determined from the simulation merger trees, will also be referred to as 'ex situ' in this work. They are classified as those that were formed while bound to a different DM halo than that which they occupy at  $z = 0$ . Conversely, stars considered to have been formed *in situ* are still bound to the same object or their progenitor in which they were born. The *in situ* classification encompasses stars formed from gas brought in by accreted satellites, which will be referred to as 'endo-debris' in this work (Tissera et al. 2013). Gas from these satellite may have lower  $\alpha$ -abundances at a given [Fe/H] than that expected for the disc, due to their bursty SFH (Tissera et al. 2013). Hence, star particles of this nature will display different chemical patterns, introducing an extra dimension of variation that should be considered to interpret the results from our method.



### 3 MACHINE LEARNING APPROACH

#### 3.1 Neural networks

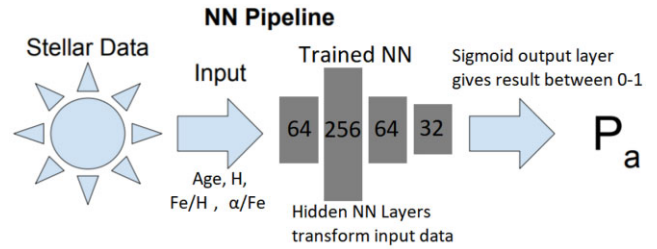
A neural network mimics the behaviour of neurons in a brain by transmitting signals between nodes, or neurons. One neuron is connected to several in the layer before it, from which it receives signals, and several in the layer after it, to which it transmits its signal. A neuron weighs each incoming signal depending on the neuron from which it is originating. All incoming signals are summed, and the total is fed into an activation function to be transmitted as a signal to neurons in the next layer. We train these NNMs by making adjustments to the weights between neurons, the building blocks of the NN, until the desired output is reached for each class of input.

We used the KERAS package (Chollet et al. 2015) that implements TensorFlow (<https://www.tensorflow.org/about/bib>). Our network is composed of six layers. The first is simply a batch normalization layer (Ioffe & Szegedy 2015) that improves network training rate by reducing internal covariate shift due to possible differences between the distributions of parameters in the training and evaluation data sets. The next four layers are composed of 64, 256, 64, and 32 neurons each, with the Scaled Exponential Linear Unit (SELU) activation function (Klambauer et al. 2017). The properties of this activation function allow our NNMs to converge faster than they would otherwise, as well as removing the risk of both vanishing and exploding gradients. On all hidden layers, we implement LeCun Normal initialization (Lecun et al. 1998). The final layer is composed of a single sigmoid neuron, which scales the network output between 0 and 1, and allows us to treat it as a probability of a star particle having been accreted. We tested several configurations with varying numbers and distributions of neurons, including a ‘flat’ variant (i.e. every layer has equal numbers of neurons), an ‘expanding’ variant (with 32, 64, 128, and 256 neurons), and a ‘contracting’ variant (with 256, 128, 64, and 32 neurons). We found that our ‘standard’ configuration, in addition to the ‘contracting’, retained its average predictive performance at both halved and doubled neuron counts, while the other architectures proved to be less stable.

As our networks are trained with labels between 0 and 1, and our output layer uses a sigmoid neuron, we can interpret the output value for each stellar particle as the probability of being an accreted star,  $P_a$ , as assigned by the network. Star particles that have been assigned a  $P_a$  by an NNM that is above a certain threshold,  $t$  ( $t = 0.5, 0.75, \text{ and } 0.9$  are used in this work) will be referred to as ‘positives’ or ‘positively-labelled’. Stars assigned a  $P_a$  by an NNM below 0.5 will be referred to as ‘negatives’ or ‘negatively-labelled’. Hence, accreted stars that are labelled positive are ‘true-positive’, while those labelled negative are ‘false-negative’ (FN), which means that they have been wrongly classified by the algorithm as *in situ*. Similarly, an *in situ* star labelled negative is a ‘true-negative’ (TN), while those labelled positive are ‘false-positive’ (FP) and hence, they have been wrongly classified as accreted (this will be also discussed in Section 3.5).

#### 3.2 Our method

The NNM applied by Ostdiek et al. (2020) focused primarily on classifying stars based on parameters that are broadly available across the *Gaia* DR2 data set – principally spatial and kinematic data. Interestingly, this work showed that including even the single Fe/H input dimension improved NNM performance in all cases. However, the number of stars with chemical abundance information available at the time of the work limited the applicability of that particular



**Figure 1.** The neural network pipeline of GANN. Full star particle data are reduced to inputs of the star particle age (Gyr), hydrogen number fraction, Fe/H and  $\alpha$ /Fe. The latter two are included as number ratios. These inputs are used by a trained network to assign an accretion probability to the particle. The architecture of the model, and the training method are discussed further in Section 3.

method, and the authors opted to use purely kinematic input. Our work is, instead, entirely based on chemical abundances patterns and age information. The main advantage of this approach is that it does not depend on the degree of phase-space mixing of the stellar debris. To this end, we chose to adopt a holistic method of network training using data from the galaxy’s environment, i.e. stars in the halo and surviving satellites, in the same data set as our evaluation and target stars (or in the same suite of observations), avoiding the need for transfer learning entirely (Niculescu-Mizil & Caruana 2007).

This also means that any differences between simulated and observed metallicity distributions (as mentioned briefly in Section 2) should make little difference to the efficacy of GANN, our description of which includes a specific methodology for constructing training data from the same data source as the population in which one might wish to find accreted stars (see Section 3.3).

We have selected H mass fraction (‘H’), Fe/H, and the average of three  $\alpha$ -iron ratios O/Fe, Mg/Fe, and Si/Fe as our chemical input parameters for GANN, and we have opted not to take the logarithm instead leaving them as linear fractions normalized by the solar values. Our figures, however, will use the familiar logarithmic convention.

The logarithm of the latter will be referred to as  $[\alpha/\text{Fe}]$ , following Bovy et al. (2016). Additionally, we supply the model with the stellar age ( $\tau$ , in Gyrs). While any parameter may be added to the NNM’s input, these were chosen based on the primary indicators ([Fe/H] and  $[\alpha/\text{Fe}]$ ) used to identify distinct stellar populations that are also tracked in the Auriga simulations (Feuillet et al. 2021). Including  $\tau$  allows the NNM to use accurate ages to differentiate between the diverse temporal evolutionary tracks of metallicity among galaxies of different masses (Venn et al. 2004).

Fig. 1 displays a broad schematic representation of the pipeline through which information will travel in our method. The network, treated as a black box in this depiction, transforms the input parameters into a widely usable probability value. The specifics of the fully trained network are, however, accessible to the user, who is able to view the weight values in each layer.

#### 3.3 Network training

We constructed our network training sets on a galaxy-by-galaxy basis by creating two sets of stars, labelled as *in situ* and *ex situ*, with assigned labels 0 and 1, respectively. These sets both contain equal numbers of each classification of star. In a population heavily weighted by an unknown amount towards *in situ* stars, this approach prevents the model from de-sensitizing itself to accreted populations.

The *in situ* half of the training set is constructed out of disc stars, of which a small minority are contaminating accreted stars.

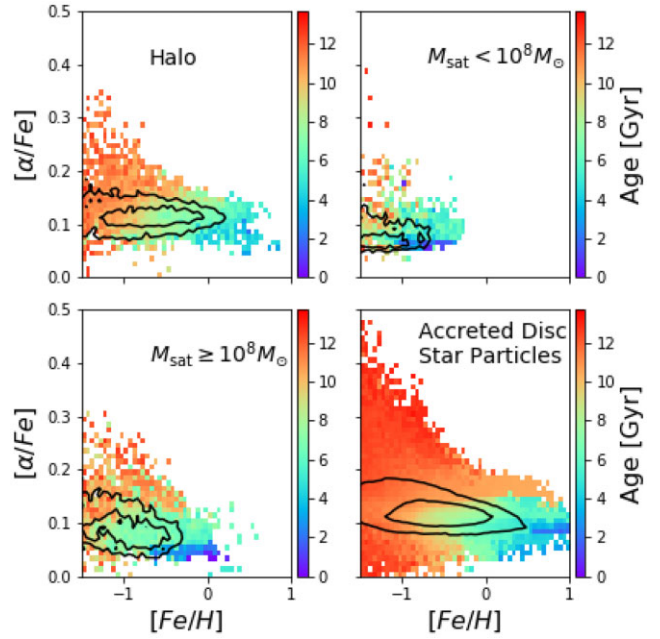
We define the disc as the stellar material within  $R_{\text{gal}} = 0.15 \times R_{200}$ , outside the effective bulge radius  $R_{\text{eff, b}}$  (taken from Gargiulo et al. 2019), with a height along the minor axis of the disc stars between  $\pm 10$  kpc, with circularity  $\epsilon_j > 0.4$  as in Tissera et al. (2013). The impact of contamination is expanded on later in this work.

By definition, galaxy satellites are the ‘sources’ of accreted stars in the galactic disc. In the case of accreted stars present in the primary galaxy’s disc at the current epoch, the source may no longer exist. However, in the simulations the source of these stars is identified by the peak mass ID, defined as the unique number associated with the most massive object with stellar mass  $M_{\text{peak}}$  it belonged to prior to becoming bound to the primary galaxy.

The *ex situ* half of the training set is sampled from stars beyond 25 kpc from the Galactic Centre, including both halo stars and those belonging to surviving satellite galaxies. Fattahi et al. (2020b) have shown that while the innermost regions of the Auriga stellar halo are dominated by only a few massive progenitors, the outer regions ( $> 20$  kpc) have, on average, eight main progenitors of relatively lower stellar mass ( $M_* < 10^8 M_\odot$ ) in the Auriga simulations. Hence, accreted stars typically dominate the mass of the stellar halo beyond 20 kpc (see also Monachesi et al. 2019) as have been previously found in other simulations (Zolotov et al. 2010; Font et al. 2011; Tissera et al. 2013). We have moved our cutoff further to ensure that we do not capture disc stars, and to further minimize contamination by *in situ* stars in our halo training sample. Despite this, both our *ex situ* and *in situ* training sets may contain some contamination. Although this approach may ignore the contribution of massive satellites to the inner halo, we will sample their abundance distributions directly through surviving satellites, as explained below. Even though we are able to separate contaminants from training sets derived from simulated data, we are most interested in realistic applications of GANN, and wish to characterize NNM behaviour in the presence of confounding information, and to demonstrate methods to minimize contamination that do not rely on information unavailable in all circumstances.

For the *ex situ* training set, we separate stars bound to surviving satellites by the total stellar mass of the satellite at the current epoch. Very high mass ( $M_* > 5 \times 10^8 M_\odot$ ), high-mass ( $5 \times 10^8 > M_* > 10^8 M_\odot$ ), medium-mass ( $10^8 > M_* > 10^6 M_\odot$ ), and low-mass ( $M_* < 10^6 M_\odot$ ) satellites contribute to the training set as evenly as possible through the imposition of sampling limits in each mass bin. In the event that they contain fewer stars than required, all stars from that source are sampled. This approach comes with the caveat of underestimating the contribution and the stellar mass of objects that have been stripped by the central galaxy. However, these stars will likely be part of the outer stellar halo, and thus considered in the training sets. As shown in Fig. 2, these selections, particularly from the halo and massive satellites, span the bulk of the distribution of accreted disc star particles in the  $[\alpha/\text{Fe}]$ – $[\text{Fe}/\text{H}]$  space.

During each cycle of network training, a random sample of the training set is passed through the network. The loss function, a value with which performance is quantified, is determined by comparing the true label values of the training data with those predicted by the network. The aim of training is to minimize this value. In our case, the loss function is binary cross-entropy, which is well suited



**Figure 2.** Distributions in  $[\alpha/\text{Fe}]$  and  $[\text{Fe}/\text{H}]$  of the different components of the *ex situ* training set for Au14, compared to the true distribution of accreted star particles in the disc (bottom right-hand panel). While the population sampled from the Halo lie near the true distribution in this space, the sample derived from massive satellites ( $M_{\text{sat}} \geq 10^8 M_\odot$ , bottom left-hand panel) includes a small knee in low- $[\text{Fe}/\text{H}]$  space that is absent in the other samples. Black contours enclose 50 and 90 per cent of the total mass in each 2D histogram.

for classification problems such as this.<sup>2</sup> The network weights are adjusted by the optimizer based on the gradient of the trainable values with respect to the loss. The learning rate can be adjusted dynamically if the loss value plateaus between training cycles. Early stopping is also active, and will restore the best-performing NNM weights once training concludes. In our case, the network is trained over a maximum of 25 cycles, which is enough for the NNM’s performance to plateau. Further training iterations have failed to significantly impact NNM performance, in our tests.

### 3.4 Network evaluation

The chemical abundance of a star particle is inherited from the progenitor gas cells from which it was created. Hence, the stellar component can determine chemical patterns that will reflect the properties of the interstellar medium from which they formed, the IMF, and the history of assembly as they can be dynamical perturbed and mixed, for example during mergers. Our goal is to construct a method to identify accreted stars in well mixed and primarily *in situ* stellar populations. For that purpose, we need to construct an evaluation data set that reflects the properties of the galactic disc, a structure within which it can be difficult to distinguish between kinematic perturbations due to merger activity and those due to the distribution of matter in the galaxy itself (Helmi et al. 2005). This makes our chemistry-based approach well suited to the problem at hand. However, in order to accurately evaluate our method, we need

<sup>1</sup>This parameter is defined as  $\epsilon_j = L_z / (L_{z, \text{max}}(E))$ , where  $L_z$  is the angular momentum along the main axis of rotation and  $L_{z, \text{max}}(E)$  is its maximum value for all particles of given binding energy (BE)  $E$ .

<sup>2</sup>The computation of the binary cross-entropy loss between a true and assigned label can be written as  $L(y, z) = \max(z, 0) - zy + \log(1 - e^{-|z|})$ , where  $y$  and  $z$  are the true and predicted labels, respectively.

to construct a data set as close to our anticipated usage scenario as possible. To this end, we construct the evaluation data sets from star particles in the disc region of each galaxy, which we will refer to as ‘disc stars’ for the purposes of this work. As we are not seeking to minimize the fraction of accreted disc stars in this data, our disc selection for the evaluation data set is less stringent than that used to construct our *in situ* training set. Hence, we consider all stars between  $R_{\text{gal}}$  and  $R_{\text{eff, b}}$  with a distance from the disc plane of less than 5 kpc.

### 3.5 Performance measures

To quantify the performance of our neural networks on stellar classification, we define and use two metrics, based on the ground-truth accretion labels from the simulations, which allows us in this case to discriminate between TP and FP and FN results. The first performance metric we introduce is the recovery fraction ( $f_{\text{recov}}$ ) that is the number of TP accreted stars with an assigned  $P_a$  above a stated threshold, divided by the total number of accreted stars, as determined by the ground truth. This metric is also known as the ‘recall’ of a NN. The second metric,  $P(TP)$ , is the probability that a star is a ‘true-positive’ result, which will be defined as the probability that a given star with an assigned probability  $P_a$  above a stated threshold  $t$  is actually an accreted star, and not an FP. This metric is also known as the ‘precision’ of an NN. This is calculated by taking the number of accreted stars with  $P_a$  greater than a given threshold  $t$ , and dividing this by the total number of stars with  $P_a > t$ . We can now delineate our performance metrics by thresholds in  $P_a$ , to build a robust understanding of how network confidence varies on a galaxy-by-galaxy basis.

These metrics are generally anticorrelated. A high  $f_{\text{recov}}$  will typically correspond with a lower TP probability, and vice versa. Similarly, increasing the  $P_a$  threshold for results from a single galaxy will normally increase the TP probability, and lower the recovery fraction. This implies that different thresholds may be more suitable for different goals, e.g. if one is attempting to remove all accreted stars from a sample, a lower threshold of  $t = 0.5$  will give the highest chance of sanitizing the data. On the other hand, if one is trying to gather information on specifically accreted stars, a higher threshold of  $t = 0.9$  will give the best probability of having a clean data set.

Stars that were formed *ex situ* but were assigned a  $P_a$  value below the given threshold for positivity are considered to be FNs, and correspond inversely to  $f_{\text{recov}}$ . The fractional impact of an incorrectly assigned FN star depends on the total population of accreted stars in the disc. FNs generally occur in cases where certain sets of satellite masses (or sources) are missing from the galactic environment, leaving gaps in the training set of *ex situ* stars. Typically, this occurs when high or very high stellar mass satellites are missing, and may have already been completely devoured by the massive primary galaxy they are bound to, and potentially leaving a gap in the satellite galaxy mass–metallicity relation that our network implicitly constructs. An additional source of FNs may be contamination confusion, due to the selection of *in situ* training examples potentially containing a significant number of accreted stars. We have chosen not to remove these to mimic a naive observational selection criteria.

Stars that were formed *in situ* but have been assigned a  $P_a$  above the threshold for positivity are considered FPs. The number of these stars heavily affects the value of  $P(TP)$ , as a higher number of incorrectly assigned *in situ* stars as accreted will lower our confidence in the NNM’s final assessment. The possible presence of *in situ* stars formed from accreted gas particles (so-called endo-debris stars), may contribute to this number. Such stars might exhibit similar or slightly more enriched chemical abundances than those of truly accreted stars

depending on how rapidly the gas was transformed into stars after falling into the galaxy.

The impact of the adopted parameters on the performance of the trained NNMs is displayed in Table 1. Over three specific simulated galactic discs, NNMs trained on the complete data set were deprived of information for one specific parameter by setting its value in all star particles to 0. The impact of this histogram flattening is determined by the change in performance when compared with the default results. We can see that H, i.e. the hydrogen mass fraction, heavily impacts the behaviour of the NNMs, as would be expected for a measure that is inversely proportional to total metallicity. The removal of the other parameters impacts the NNMs in different ways. This is due to the NNMs being trained individually for each selected galactic disc, leading to potentially multiple approaches that are tailored specifically to the unique training data. [Fe/H] appears to have a mild impact on NNM performance across the board; however, in the case where the  $\tau$  parameter is removed entirely, we have found that the impact of [Fe/H] flattening rises dramatically. The NNM trained on Au14 data appears to use the  $[\alpha/\text{Fe}]$  parameter to distinguish between *in situ* and *ex situ* stars, whereas in Au20 and Au22, this flattened parameter only barely changes the results. The impact of  $\tau$  flattening also varies by the Auriga system. In both Au14 and Au22, it appears to be pivotal for NNM discrimination; however, in Au20, this effect is significantly lessened.

## 4 ANALYSIS AND RESULTS

In this section, we present the network performance results across the selected Auriga galaxies. For this purpose, for each of them, we constructed the training set by combining stars from the different stellar components, i.e. stellar halo and surviving satellites galaxies as explained in Section 3.2. Then we applied our method to each galaxy. Table 2 displays the performance indicators of the NNM trained and evaluated on data from each Auriga system. As expected,  $f_{\text{recov}}$  and  $P(TP)$  are anticorrelated. In Fig. 3, we display the two metrics for  $t = 0.75$  estimated by training over the combined stellar sample (large, black circles). First, the anticorrelation is not quite 1:1, with NNMs overperforming in  $P(TP)$  as  $f_{\text{recov}}$  increases. This is good, as it means an increase in one performance measure does not necessarily correspond with an equal decrease in the other. Indeed, our model achieved both  $P(TP)$  and  $f_{\text{recov}}$  above 50 per cent in 14 of our selected haloes.

Additionally, this figure shows the metrics obtained by training over data sets built from surviving satellites with different stellar mass. As it can be seen, two individual sets of training data deliver similar NNM performance to the one obtained from the full combined training set: those built from the stellar halo only and from very massive satellites. Specifically, halo stars with galactocentric distances larger than 25 kpc (red circles) yield generally comparable  $P(TP)$  and  $f_{\text{recov}}$  at a threshold of  $t = 0.75$ , although they show a mild systematic increase in  $f_{\text{rec}}$ , and a similar systematic decrease in  $P(TP)$ . A direct comparison between NNMs trained on halo-only stars and those trained with the combined data set is presented in Fig. A1. We found that, on average, halo-only NNMs (red circles) achieved 9.2 per cent higher  $f_{\text{rec}}$  for 2.5 per cent lower  $P(TP)$ . In contrast, a training data set composed of satellite stars (large blue circles) evenly split by present-day object mass has on average 2.6 per cent higher  $P(TP)$ , and 17.7 per cent lower  $f_{\text{rec}}$ . While surviving satellites, by definition, are expected to have contributed minimally to the accreted population of star particles in the stellar disc, they contain valuable information about age and metallicity that GANN can apply during its evaluations to detect star particles that formed in similarly enriched environments, but whose parent object was destroyed before

**Table 1.** Impact of the specific parameters, hydrogen mass fraction, H, iron-to-hydrogen mass fraction, Fe/H,  $\alpha$ -to-hydrogen mass fraction,  $\alpha$ /H and stellar age,  $\tau$ , on the performance of the trained NNMs in a selection of three simulated galactic discs.

Au14 Param	$P(TP)$			$f_{\text{rec}}$		
	$P_a > 0.5$	$P_a > 0.75$	$P_a > 0.9$	$P_a > 0.5$	$P_a > 0.75$	$P_a > 0.9$
None	0.69	0.8	0.9	0.88	0.59	0.17
H	1	1	1	0	0	0
Fe/H	0.66	0.71	0.91	0.462	0.387	0.156
$\alpha$ /Fe	0.12	0.12	0.12	1	1	1
$\tau$	0.3	0.36	0.46	0.994	0.984	0.964
Au20 Param	$P(TP)$			$f_{\text{rec}}$		
	$P_a > 0.5$	$P_a > 0.75$	$P_a > 0.9$	$P_a > 0.5$	$P_a > 0.75$	$P_a > 0.9$
None	0.75	0.84	0.92	0.36	0.17	0.03
H	0.78	0.78	0.78	0	0	0
Fe/H	0.75	0.85	0.87	0.251	0.12	0.019
$\alpha$ /Fe	0.73	0.77	0.83	0.387	0.305	0.193
$\tau$	0.52	0.55	0.56	0.703	0.608	0.497
Au22 Param	$P(TP)$			$f_{\text{rec}}$		
	$P_a > 0.5$	$P_a > 0.75$	$P_a > 0.9$	$P_a > 0.5$	$P_a > 0.75$	$P_a > 0.9$
None	0.23	0.26	0.33	0.99	0.97	0.91
H	1	1	1	0	0	0
Fe/H	0.29	0.32	0.39	0.906	0.852	0.73
$\alpha$ /Fe	0.23	0.27	0.34	0.995	0.979	0.919
$\tau$	0.06	0.06	0.07	1	1	1

*Notes.* The flattened parameter (Param) denotes which specific parameter has been set to zero to assess its impact. Results are quantified by two adopted metrics,  $P(TP)$  and  $f_{\text{rec}}$  (see Section 3.5).

**Table 2.** Neural network results with a training set composed of stars from the galactic halo, and those sampled across a variety of satellite masses.

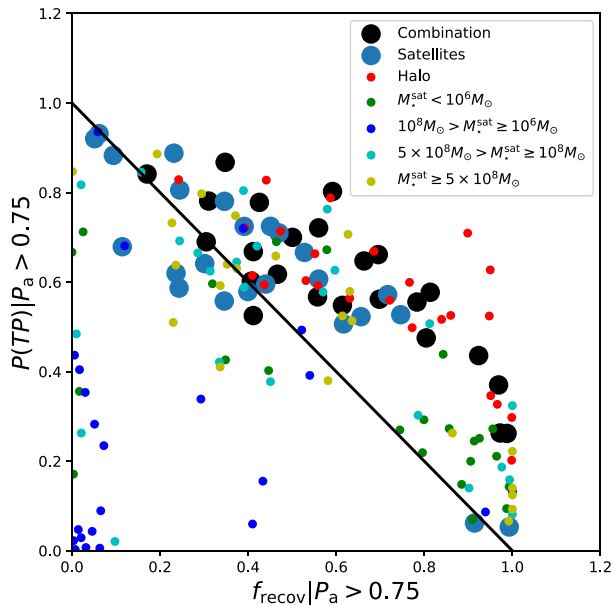
Halo	Disc $f_{\text{acc}}$	$f_{\text{recov}} P_a > 0.9$	$f_{\text{recov}} P_a > 0.75$	$f_{\text{recov}} P_a > 0.5$	$P(TP) P_a > 0.9$	$P(TP) P_a > 0.75$	$P(TP) P_a > 0.5$
2	0.11	0.10	0.41	0.85	0.50	0.53	0.51
3	0.13	0.24	0.41	0.51	0.65	0.60	0.56
4	0.33	0.07	0.30	0.51	0.79	0.69	0.59
5	0.08	0.60	0.78	0.88	0.68	0.56	0.49
6	0.08	0.30	0.66	0.79	0.75	0.65	0.55
7	0.32	0.07	0.35	0.65	0.93	0.87	0.80
9	0.07	0.71	0.80	0.86	0.57	0.48	0.43
10	0.02	0.63	0.92	0.99	0.73	0.44	0.26
12	0.14	0.29	0.56	0.73	0.71	0.57	0.50
13	0.08	0.25	0.70	0.94	0.79	0.66	0.53
14	0.12	0.17	0.59	0.88	0.90	0.80	0.69
15	0.12	0.16	0.70	1.00	0.70	0.56	0.42
16	0.07	0.41	0.81	0.93	0.74	0.58	0.46
17	0.02	0.85	0.99	1.00	0.40	0.26	0.21
18	0.03	0.73	0.97	1.00	0.48	0.37	0.32
19	0.20	0.13	0.43	0.68	0.88	0.78	0.67
20	0.36	0.03	0.17	0.36	0.92	0.84	0.75
21	0.15	0.16	0.41	0.57	0.74	0.67	0.58
22	0.02	0.91	0.97	0.99	0.33	0.26	0.23
23	0.09	0.25	0.56	0.71	0.87	0.72	0.63
24	0.11	0.21	0.61	0.85	0.59	0.55	0.52
26	0.14	0.30	0.50	0.62	0.77	0.70	0.67
27	0.10	0.13	0.47	0.66	0.62	0.62	0.55
28	0.22	0.14	0.31	0.42	0.88	0.78	0.72

*Notes.* For each halo, we present a summary of network performance as the mean  $f_{\text{recov}}$  and  $P(TP)$  of three NNMs separately trained on the same training set data, evaluating the same galactic disc star particles. As NNM training is a stochastic process, each will behave slightly differently. We provide the simulation number, fraction of accreted stars in the disc selection, and the mean recovery fractions, and true-positive (TP) rate for separate runs at three confidence thresholds (columns from the left to right).

the current epoch. In particular, massive surviving satellites (small yellow and cyan circles) are relevant to build a good training set. This is important since the inner region of the stellar haloes have been excluded from the training sets. Massive satellites are expected

to contribute significantly to these regions (e.g. Tissera et al. 2014, 2018; Fattahi et al. 2020b; Khoperskov et al. 2022) principally if they are set in radial orbits (e.g. Amorisco 2017; Fernández-Alvar et al. 2019).





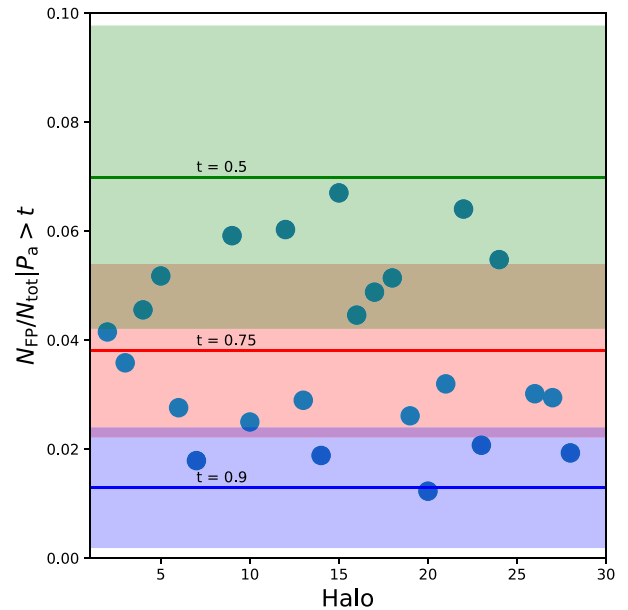
**Figure 3.**  $P(TP)$  as a function of  $f_{\text{recov}}|P_a > 0.75$  for the selected Auriga stellar discs. Symbols are coloured by the specific set of data used to train the NNM, with the final combined set presented as large, black circles. The anticorrelation is clear, as is the fact that the NNMs tend to overperform (e.g. a gain in  $f_{\text{recov}}$  does not imply an equal loss in  $P(TP)$ ) with respect to the negative 1:1 linear relation (black solid line).

Fig. 4 shows the rate of FPs in the total evaluation population at a  $P_a$  threshold of  $t = 0.75$  for each Aquarius halo. In situations where we may not know of the exact  $P(TP)$  value (e.g. with observational data), this allows us to estimate a median, as well as an upper and lower bound on the number of contaminating FPs in the end result. For a median false-positivity rate of 4 per cent, this allows us to calculate

$$P(TP)_{\text{prelim}} = 1 - 0.04 \times N_{\text{tot}}/N(P_a > 0.75)$$

without any information besides the total number of stars in the sample. We also include the mean values and the standard deviation for models with  $t = 0.9$  and  $0.5$  for comparison.

To characterize how the network distinguishes between positively and negatively labelled material in the  $[\alpha/\text{Fe}]$ – $[\text{Fe}/\text{H}]$  space, we calculated the median  $[\alpha/\text{Fe}]$  and  $[\text{Fe}/\text{H}]$  of the positive and negative classified star particles, and those of the ground truth accreted and *in situ* particles. We find that the median  $[\alpha/\text{Fe}]$  in both positively and negatively labelled star particles of 0.13 dex indicates that simply using  $\alpha$ -element abundance is not enough to differentiate accreted and *in situ* star particles at least in the Auriga haloes. This could be due to the large scatter in the  $[\alpha/\text{Fe}]$  ratios exhibited by the simulated stellar populations as we will discuss in Section 4.2. The median  $[\text{Fe}/\text{H}]$ , however, displays a stark difference. Positively labelled star particles have a median  $[\text{Fe}/\text{H}]$  of  $-0.72$  dex, while negatively labelled star particles have a median value of  $[\text{Fe}/\text{H}] = 0.04$  dex. As expected, the ground-truth median  $[\text{Fe}/\text{H}]$ , at a value of  $-0.47$  dex across all the Auriga discs, regardless of their origin, is higher than that of the star particles labelled as accreted by the NNMs. This margin decreases to  $-0.62$  dex as the threshold  $P_a$  decreases to  $t = 0.5$ . This implies the NNMs require a larger margin in  $[\text{Fe}/\text{H}]$  than that arises naturally to confidently distinguish between the two populations in that space.



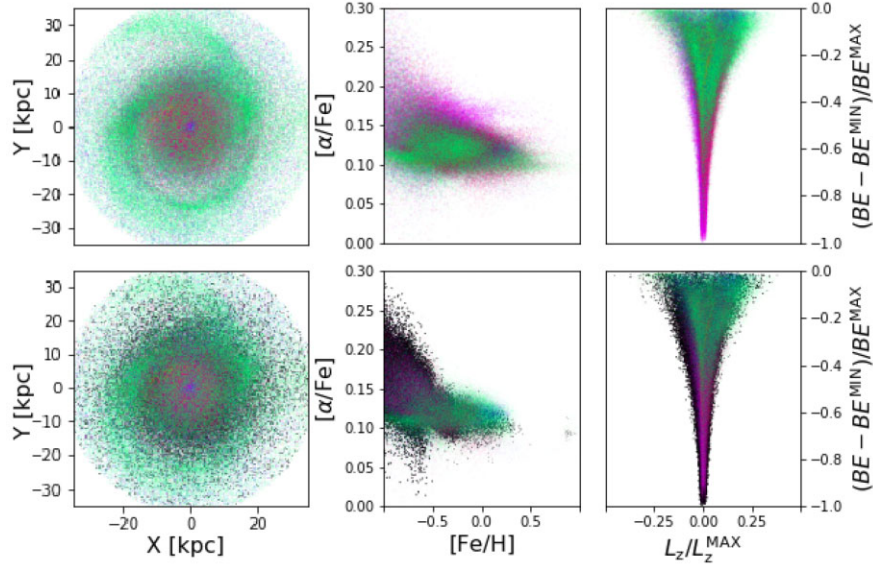
**Figure 4.** Fraction of the total number of evaluated stars that are FPs, ordered by their arbitrarily assigned Auriga halo number. The circles denote the results for  $t = 0.75$ . Mean values for  $t = 0.5$  (green),  $0.75$  (red), and  $0.9$  (blue) are also displayed, with shaded bands corresponding to the standard deviation.

We have also found that the fraction of stellar mass with  $[\text{Fe}/\text{H}]$  above and below the galactic disc median value  $[\text{Fe}/\text{H}]$  massively varies between the positively and negatively labelled populations of star particles. The fraction of positively labelled stellar mass that has a  $[\text{Fe}/\text{H}]$  greater than the total galactic disc median is 0.04. For negatively labelled star particles, this fraction is 0.60.

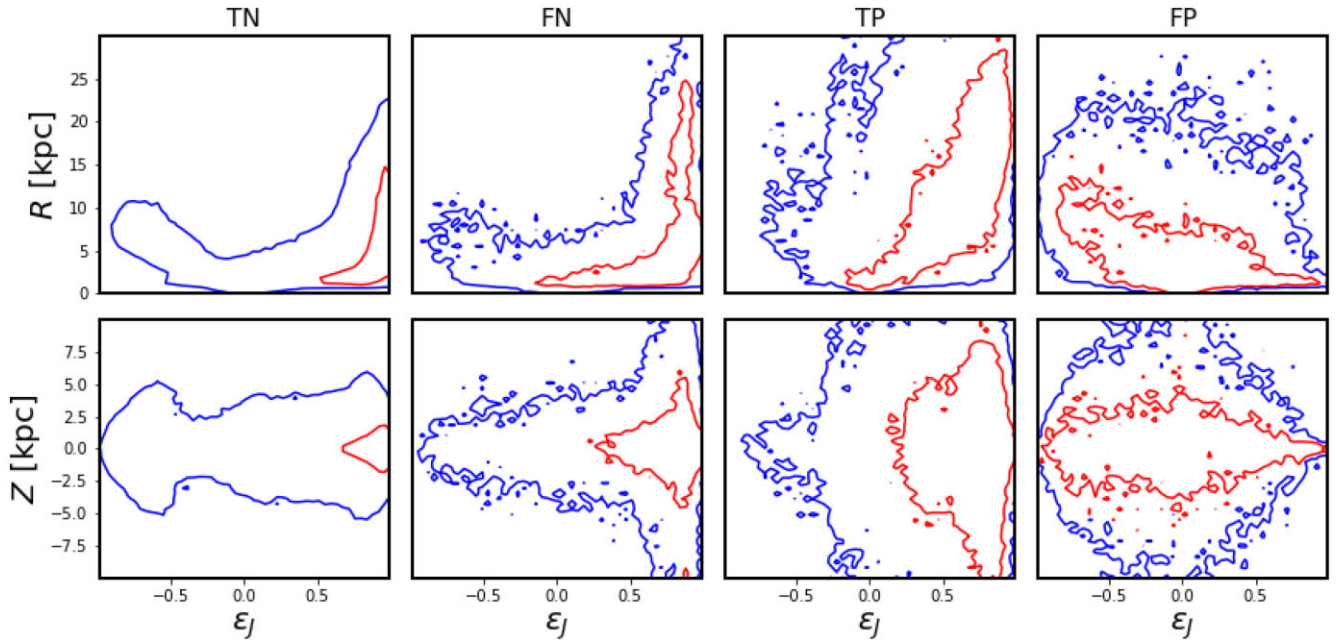
These findings are displayed clearly on the  $[\alpha/\text{Fe}]$ – $[\text{Fe}/\text{H}]$  plane for Au14, Au22, and Au20 in the top panels of Figs 7–9, which are discussed in detail in the next section. However, to facilitate the interpretation, let us note that the 50 and 90 per cent contours only vary slightly in  $[\alpha/\text{Fe}]$  position, while the distinction between the positively and negatively labelled populations is stark on the  $[\text{Fe}/\text{H}]$  axis.

#### 4.1 Performance with fixed subpopulations

To properly evaluate network performance in galaxies with different *ex situ* contributions to the stellar disc, we constructed subsamples of stellar disc populations with fixed sample size, while varying the fractions of accreted star particles. Four training subsamples are constructed from the same set of eligible star particles, with fixed total numbers, and fixed fractions of accreted star particles of 10, 5, 2.5, and 1 per cent of a total 10 000 star particles. Hence, the difference in performance can be then associated to the different sampling of accreted stellar populations. Table 3 displays the variation of  $P(TP)$  with accreted fraction. Cells are colour-coded by value – blue cells are above 0.75, green are above 0.5, and red contain below 0.5. This coding allows us to easily see that  $P(TP)$  correlates very well with the fraction of accreted stars in the test subsamples. As the fixed fraction of accreted material is decreased, the rate of FPs will remain constant, and lead to a decrease in  $P(TP)$ .



**Figure 5.** The distribution of *ex situ* stars (top panels), and *ex situ*-labelled (bottom panels) star particles from Au14. Colours represent the star particles brought in by different satellites identified by their unique peak mass Id (see Section 3.3). Colours on the bottom panel match those in the top for the same peak mass Id, while black points correspond to mislabelled *in situ* star particles (FPs). Both the BE and the angular momentum along the  $z$ -axis,  $L_z$ , are normalized by the maximum and minimum values to lie in  $[-1,0]$  and  $[-1,1]$ , respectively.

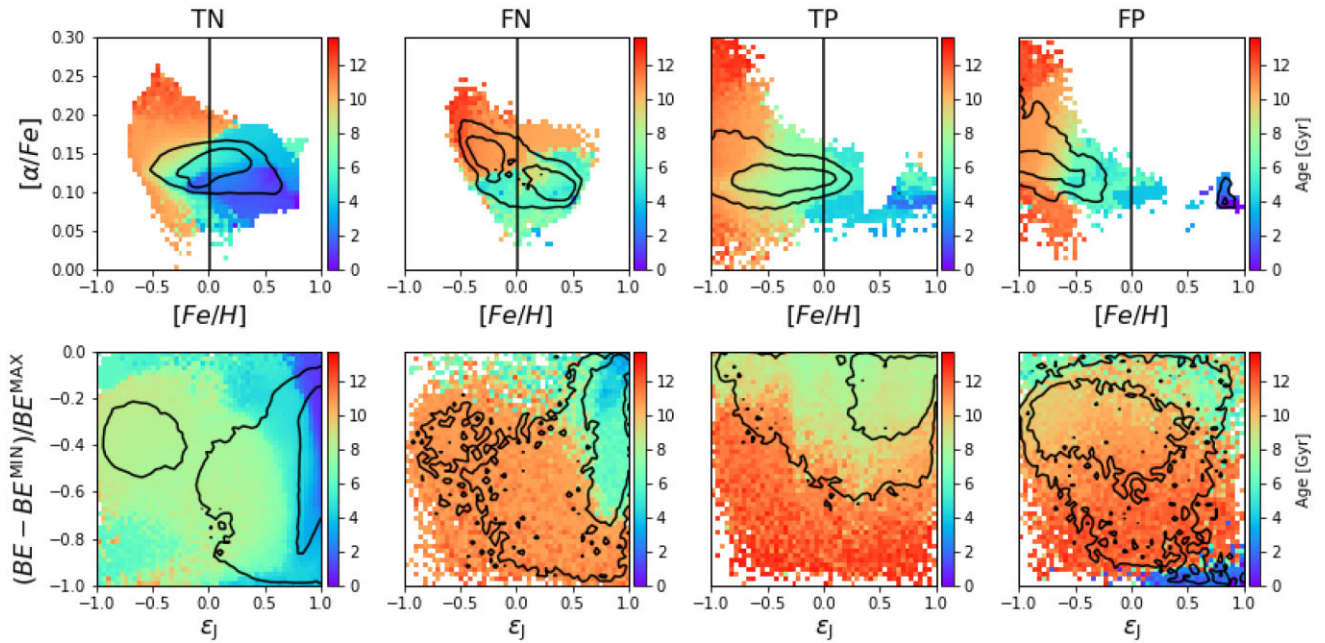


**Figure 6.** Projected radial distance,  $R$  (top panels) on the rotation plane and disc height,  $Z$ , (bottom panels) as a function of circularity for the four classifications of star particles in our network evaluation of Au14: TN, FN, TP, and false positive (FP). Contours contain 50 and 90 per cent of the total stellar mass of each classification.

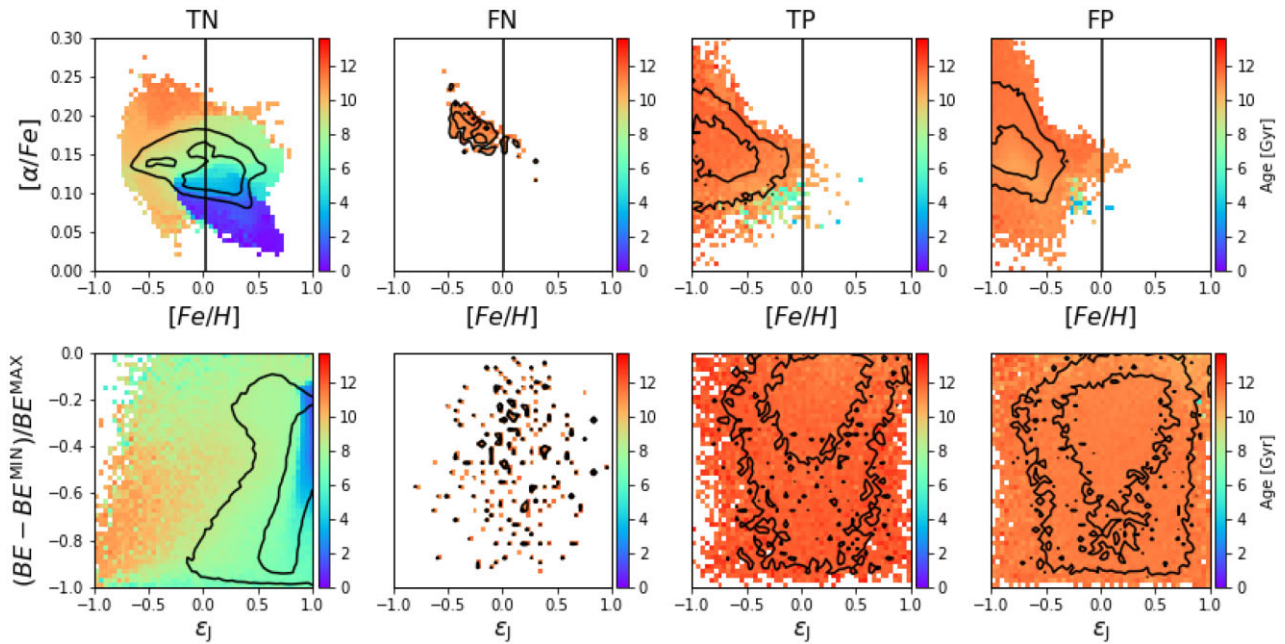
In summary, Table 3 shows that the recovery fraction of the diminishing accreted population remains relatively constant, which further implies that the cause of the decreased  $P(TP)$  is due to the fixed FP rate in this experiment. As  $f_{\text{recov}}$  is a measure of similarity between the accreted populations in the disc and the training satellite populations in the galactic halo, it should not vary significantly as the size of the populations are adjusted, as shown in the table.

## 4.2 Accretion source recovery

The next step is to evaluate the performance of our method to identified accreted stars in the Auriga haloes. For this purpose we take advantage of having the complete assembly histories. Additionally, each accreted stellar particle can be linked to an accreted satellites (or sources) through their Peak mass ID, which is associated to the most massive object the particles were bound to prior to their infall



**Figure 7.** Upper panels: histogram of  $[\alpha/\text{Fe}]$  versus  $[\text{Fe}/\text{H}]$  for the TN, FN, TP, and False Positive (FP) selections of star particles from Au14, coloured by the median particle age in each bin. The median galactic  $[\text{Fe}/\text{H}]$  is displayed with a vertical black line. Bottom panels: histogram of the BE, rescaled by the highest and lowest values in the selection of star particles, and  $\epsilon_j$ . Bins are coloured by the median age of the star particles they contain. Contours contain 50 and 90 per cent of the total mass of star particles.

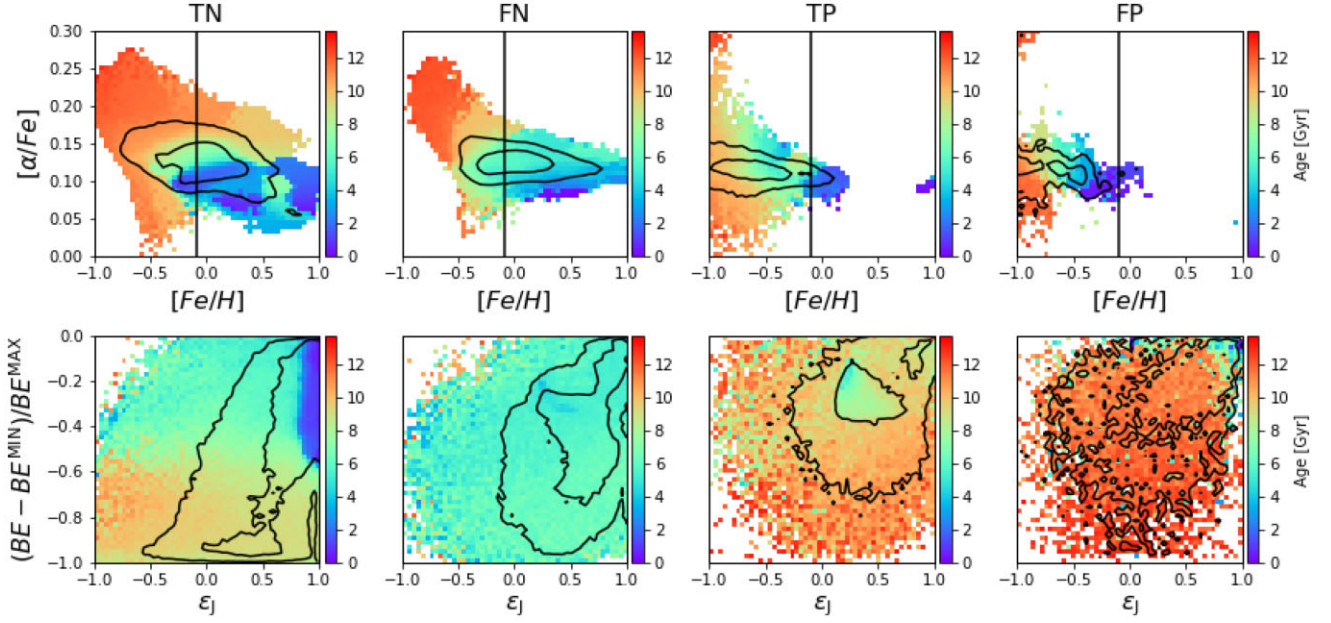


**Figure 8.** Upper panels: histogram of  $[\alpha/\text{Fe}]$  versus  $[\text{Fe}/\text{H}]$  for the TN, FN, TP, and False Positive (FP) selections of star particles from Au22, coloured by the median particle age in each bin. The median galactic  $[\text{Fe}/\text{H}]$  is displayed with a vertical black line. Lower panels: histogram of the BE, rescaled by the highest and lowest values in the selection of star particles, and  $\epsilon_j$ . Bins are coloured by the median age of the star particles they contain. Contours contain 50 and 90 per cent of the total mass of star particles.

on to the massive, primary galaxy. By comparing these unique source IDs in the accreted stellar particle data sets with  $P_a > 0.75$  to the total list of unique sources in the discs, we can estimate the power of the NNMs to uncover a picture of the complete accretion history. We find that in every host galaxy in the Auriga set, 85 per cent or

more of the individual accretion sources are recovered at  $P_a > 0.75$ , where we consider a satellite to be recovered if over 10 per cent of its deposited mass in the present-day stellar disc is correctly labelled by the NNM. This shows the potential of this method to unveil a comprehensive picture of the contribution of accreted stars





**Figure 9.** Upper panels: histogram of  $[\alpha/\text{Fe}]$  versus  $[\text{Fe}/\text{H}]$  for the TN, FN, TP, and False Positive (FP) selections of star particles from Au20, coloured by the median particle age in each bin. The median galactic  $[\text{Fe}/\text{H}]$  is displayed with a vertical black line. Lower panels: histogram of the BE, rescaled by the highest and lowest values in the selection of star particles, and  $\epsilon_j$ . Bins are coloured by the median age of the star particles they contain. Contours contain 50 and 90 percent of the total mass of star particles.

**Table 3.**  $P(TP)$  (Columns 1–4) and  $f_{\text{recov}}$  (Columns 5–8) for  $P_a > 0.75$  for trained networks on 10000 star subsets with fixed fractions of accreted stars,  $f_{\text{acc}}$ .

$\sqrt{f_{\text{acc}}}$	$P(TP)$				$f_{\text{recov}}$			
	0.1	0.05	0.025	0.01	0.1	0.05	0.025	0.01
2	0.63	0.44	0.25	0.12	0.50	0.50	0.46	0.48
3	0.85	0.77	0.59	0.30	0.15	0.14	0.18	0.12
4	0.78	0.71	0.56	0.28	0.09	0.10	0.13	0.11
5	0.92	0.84	0.69	0.50	0.30	0.28	0.34	0.29
6	0.89	0.82	0.61	0.41	0.51	0.52	0.46	0.45
7	0.47	0.33	0.18	0.06	0.22	0.25	0.27	0.19
9	0.98	0.93	0.84	0.74	0.65	0.64	0.66	0.63
10	0.96	0.90	0.78	0.65	0.86	0.85	0.83	0.86
12	0.92	0.82	0.66	0.41	0.38	0.35	0.37	0.34
13	0.80	0.60	0.43	0.28	0.51	0.49	0.50	0.59
14	0.64	0.43	0.27	0.13	0.74	0.74	0.70	0.73
15	0.15	0.08	0.04	0.02	0.72	0.69	0.71	0.69
16	0.78	0.66	0.45	0.24	0.58	0.54	0.58	0.53
17	0.75	0.60	0.41	0.21	0.98	0.98	0.97	0.97
18	0.87	0.79	0.61	0.37	0.59	0.61	0.55	0.56
19	0.93	0.78	0.69	0.45	0.19	0.18	0.19	0.17
20	0.79	0.62	0.47	0.22	0.10	0.10	0.08	0.13
21	0.64	0.48	0.30	0.12	0.26	0.26	0.27	0.25
22	0.98	0.97	0.92	0.83	0.56	0.56	0.52	0.55
23	0.80	0.65	0.50	0.27	0.27	0.24	0.30	0.26
24	0.86	0.74	0.70	0.44	0.27	0.27	0.30	0.27
26	0.67	0.58	0.26	0.21	0.20	0.24	0.14	0.27
27	0.63	0.43	0.26	0.10	0.13	0.12	0.12	0.12
28	0.72	0.51	0.40	0.26	0.22	0.19	0.24	0.25

*Note.* Cell colours: Blue represents values above 0.75, green above 0.5, and pink below 0.5.

to the galactic disc, if used in concert with additional techniques to disentangle the detected accreted stars based on their progenitor satellites. As an example, Fig. 5 displays the spatial distribution and relevant properties of the accreted stars coloured by their sources (top panels), and the populations that the model recovers (bottom

panels), assigned the same colour for each unique source object for Au14.

Once a set of stars have been assigned  $P_a$  values by the NNM, other physical parameters could be used to disentangle the contribution of FP identifications. Since the kinematics and BE have not been used



in the NNMs, the only correlation with  $P_a$  will be due to innate correlations with the metallicity distribution and chemical abundances. As an example, the upper panels of Fig. 5 displays stream-like stellar structures (yellow-green), and an inner core of accreted material (blue), which are recovered by the NNM, as displayed in the lower panels. In general,  $\sim 60$  per cent of the accreted stars in this galaxy are correctly labelled at  $P_a > 0.75$ , as shown Table 2. The misclassified *in situ* stars displayed in Fig. 5 (black points) are dominated by primarily old stars ( $\tau_{\text{median}} = 10.7$  Gyr) that follow a circularity distribution centred around  $\epsilon_{j, \text{median}} = -0.08$ . These stars are both chemically and kinematically much more similar to the accreted population than that of the global disc. Other clustering of individual accreted substructures could be more evident with higher parameter post-processing method such as streamfinding algorithms, or with more general clustering approaches, which can be applied after the NNM classification.

Au14 provides a good example of the potential for kinematic disentangling, and is discussed in more detail below. Other galaxies may similarly provide excellent environments for distinction between true and false positive and negative assignments by the NNM. In-depth post-processing of NNM results that rely on kinematic differences between accreted and *in situ* populations are beyond the scope of this work, which is primarily focused on the application of NNM techniques towards chemical information. Nevertheless, we analyse three examples of good and poor performance in order to assess the physical reasons behind these behaviours. The other galaxies in the sample can be generally characterized as following the same pitfalls as these examples, regardless of galaxy-specific details - either performing well, overestimation of accreted material, or overestimation of *in situ* material.

#### 4.2.1 Au14

Au14 is an example of a galaxy for which the NNMs perform well. We find that the star particles that NNMs assign  $P_a > 0.75$  in this galaxy's stellar disc are 80 per cent likely to be TP accreted stars. The selected particles contain 59 per cent of all true accreted star particles. The training data set we create for this galaxy is dominated by contributions from the stellar halo, and high- $M_{\text{star}}$  satellites. Lower  $M_{\text{star}}$  objects do not contribute enough stars to fill their allotment of the training set, as there are not enough satellite objects in this mass range at  $z = 0$ . This leads to a small, but non-negligible fraction of FN classifications, though not enough to significantly impact the network performance measures.

This galaxy also provides an excellent example for the use of kinematic data to augment the NNM results. Fig. 6 displays the distributions of the kinematic parameter,  $\epsilon_j$ , and projected radial distance,  $R$ , and height,  $Z$ , in each network-assigned classification. The FP population (fourth column) is distinct from the TP star particles (third column) primarily due to its lower circularity and central concentration, globally. This is due to the fact that, as discussed in Gómez et al. (2017), Au14 posses a very prominent *ex situ* disc component. From this figure it is clear avoiding the central regions, with  $R < 5$  kpc, would improve the NNM's selection of accreted star particles. FP are distributed more evenly in  $Z$  than accreted stars. These stars were misclassified due to their elevated  $[\alpha/\text{Fe}]$ , and lower  $[\text{Fe}/\text{H}]$ , as they tend to be older. This can be appreciated from Fig. 7 where  $[\alpha/\text{Fe}]$  are displayed together with the BE as a function of the angular momentum along  $z$ -axis,  $L_z$ .

Those stars classified as FN have been misplaced because they are more concentrated to the central region with low  $Z$ . The upper panel of Fig. 7 shows that the chemical abundances resembled

better those of true *in situ* or TN stars. The lower panels of the figure demonstrate that although there is no kinematic information provided to the NNM, the subgroups formed by comparing the NNM-assigned label with the ground-truth populate phase space differently. Star particles labelled as *in situ* (TN and FN) have more dominant young populations and are clearly supported by rotation, with only small counter-rotating elements. Star particles labelled as accreted (TP and FP) are predominantly older and less rotationally supported, forming a thicker disc in the case of the TP selection, and contributing to the bulge in the FP case.

Other galaxies may not be as well segregated, and would potentially require more complicated methods to separate correctly labelled star particles from those that are incorrect. In this case, however, the boundaries are quite clear.

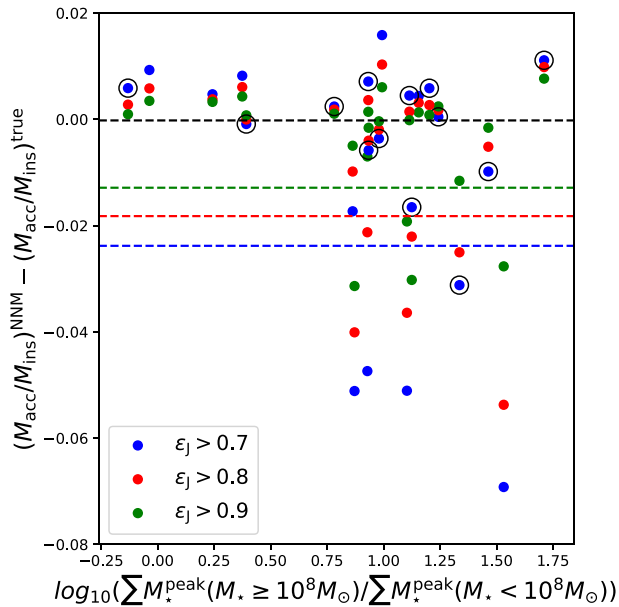
#### 4.2.2 Au22

Au22 is an example of a galaxy with a low  $P(TP)$ . While 97 per cent of the accreted stars are recovered at  $P_a > 0.75$ , we would only be 26 per cent certain that a star the NNM has flagged as accreted has actually come from outside the primary galaxy. Its  $f_{\text{acc}}$  of 2 per cent falls at roughly half the mean FP rate, which can explain the particularly poor  $P(TP)$ , given such a high recovery fraction. The galaxy's trained NNM, however, also yields a large number of FP results. This is due to the presence of endo-debris, or star particles formed by gas stripped from orbiting satellite galaxies. This is demonstrated in the galaxy's complicated merger history. Between 13.5 and 11.6 Gyr ago, a satellite with nearly nine times the gaseous mass of the central galaxy fell from 66 to 13 kpc from the primary galaxy, losing nearly all of its gas in the process. Fig. 8 displays the distribution of  $[\alpha/\text{Fe}]$  versus  $[\text{Fe}/\text{H}]$  and  $BE$  versus  $L_z$  for the various classification categories of stars in this galaxy. The FP  $BE-L_z$  distribution is similarly tightly bound in comparison with the TP population, and the age distribution of these mislabelled stars falls off abruptly 7.5 Gyr ago, after peaking at roughly 11 Gyr, which is a distribution we would not expect from FPs that are randomly misassigned from the *in situ* population. This can be explained with endo-debris, or technically *in situ* stellar material formed from gas that was accreted from an infalling satellite, as defined in Tissera et al. (2013). If this were the true source of the FPs, we would expect the age distribution of FP stars to be tied closely to the age distribution of TP accreted stars. From Fig. 8, we can see the similarities in both the metallicity and age distributions in the TP and FP selections.

This example highlights the impact of gas-rich mergers on the performance of our method. If a galaxy has experienced such a merger, the endo-debris may be detected as accreted stellar material, despite ostensibly having formed *in situ*, from gaseous debris mixed with the matter in the disc.

#### 4.2.3 Au20

Au20 is an example of a galaxy with a low  $f_{\text{recov}}$  in conjunction with a large reservoir of stars from massive satellites in its local environment, which comprise the majority of the training set candidate stars for this galaxy. Despite the presence of this reservoir of training stars, a massive majority of the misidentified FN stars originate from an object with a peak stellar mass (defined in 3.3) of  $M_{\text{tot}} = 10^{11.10} M_{\odot}$ . This object has been orbiting the central galaxy for over 11 Gyr, and merged only 2.5 Gyr ago with a stellar mass of  $M_{\star} = 10^{10.16} M_{\odot}$ . Fig. 9 demonstrates that the distribution of  $[\alpha/\text{Fe}]$  versus  $[\text{Fe}/\text{H}]$  values for the FN selection bears many more similarities to that of the TN sample, indicating that the accreted stars from this massive object



**Figure 10.** The difference between the true fraction of accreted to *in situ* stellar mass and the fraction calculated with NNM results as a function of the ratio of the sum of the surviving satellite galaxies’ peak stellar masses with  $M_* \geq 10^8 M_\odot$  to that contained in galaxies less massive. The accreted and *in situ* masses from the NNMs were taken from the output, requiring  $P_a > 0.75$  to be considered as accreted stars, and  $P_a < 0.5$  for *in situ*. The mean differences at each circularity limit are displayed as coloured dashed lines. The median difference at  $\epsilon_J > 0.7$  is shown as a black dashed line. Galaxies that have been previously referred to as ‘good’ are marked with a circle.

are chemically similar to those in a central galaxy, not a satellite. As this example shows, if a merger takes place with a galaxy with similar stellar mass, the accreted stars may be chemically indistinguishable from those that belong to our primary galaxy.

In fact we have found that GANN generally recover accreted stellar populations that are mainly rotationally dominated but also extended to lower  $\epsilon_J$  in agreement with Gómez et al. (2017) (Fig. 5). We further investigate this by estimating the fraction of accreted stars over *in situ* at  $\epsilon_J$  selections above 0.7, 0.8, and 0.9, that are recovered by GANN. This is shown in Fig. 10. The NNM results were calculated assuming every star particle with  $P_a > 0.75$  is accreted, and every particle with  $P_a < 0.5$  was formed *in situ*. On average, GANN results underestimate the fraction of accreted to *in situ* stars by up to 2 per cent. The black dashed line, corresponding to the median difference in  $M_{\text{acc}}/M_{\text{ins}}$  values at  $\epsilon_J > 0.7$  across our galaxy selection, shows no significant shift. This implies the deviation is driven by several outliers, as opposed to being a systematic underestimation of the fraction of accreted star particles. Selections based on circularity, or other non-chemical parameters have the potential to provide crucial post-processing in low  $P(TP)$  situations.

### 4.3 Impact of galactic environment

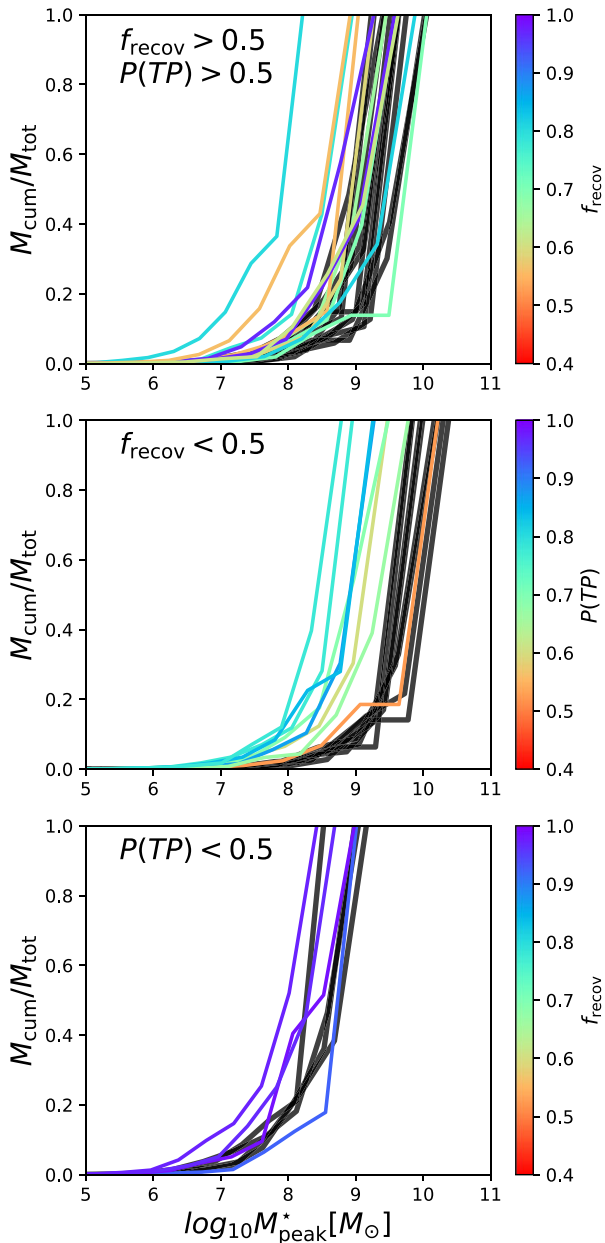
An interesting aspect of our NNM is that, once trained, it does not require any external data for further training. This means that it could be readily applied to observational data without the need of a companion simulation suite. Note that the models used for training are MW analogs that sample a wide range of different possible assembly histories. We have also shown that the method is very

successful for half (12) of the Auriga simulated galaxies that we have evaluated, providing us with  $f_{\text{recov}} > 0.5$  and  $P(TP) > 0.5$  for  $P_a > 0.75$ . In these galaxies, the training selection of stars encompasses enough of the variation present in the galactic disc for *in situ* and accreted material to be distinguished and separated. However, for the other half of our sample, the results yielded either low  $f_{\text{recov}}$  and/or  $P(TP)$  (below 50 per cent).

The underperformance of our NNM in these cases could be associated with one of the principal components of our method: *the local galactic environment* from which the training set is obtained. To explore this, we quantified the local environment by computing the probability distribution function (PDF) of the stellar mass of nearby satellites and contributors to the outer stellar halo (i.e. stars beyond 25 kpc as described in Section 3.3). While an evaluation suite of Auriga galaxies has allowed us to determine that the method will distinguish between accreted and *in situ* stars in general, we need to compare the surviving satellite mass distributions to draw any further conclusions about performance with the MW itself.

Fig. 11 displays the cumulative mass fractions of each surviving satellite’s peak mass, plus the peak masses of objects that have contributed star particles to the outer stellar halo (identified by unique peak mass IDs), as a function of the stellar mass of their source satellite,  $M_*^{\text{peak}}$ , for each Auriga galaxy, separated by NNM performance. The cumulative distributions are shown as lines coloured by either  $f_{\text{recov}}$  or  $P(TP)$ . The black lines represent the equivalent distributions for accreted stars in the discs for the same NNM performance selections. Galaxies for which an NNM achieves  $P(TP) > 0.5 | P_a > 0.75$  are in the top panel, galaxies for which an NNM provides  $f_{\text{recov}} < 0.5 | P_a > 0.75$  are located in the middle panel, and galaxies for which an NNM provides  $P(TP) < 0.5 | P_a > 0.75$  are located in the bottom panel.

Auriga systems for which both  $f_{\text{recov}}$  and  $P(TP)$  are above 0.5 (top panel: Au5, Au6, Au12, Au13, Au14, Au15, Au16, Au23, Au24, Au26) tend to have accreted stellar particles in the disc region originated in sources with similar  $M_*^{\text{peak}}$  distribution to their environment (from which the training set are selected). Galaxies for which NNMs result in a lower recovery fraction (middle panel, Au2, Au3, Au4, Au7, Au19, Au20, Au21, Au27, Au28) tend to have accreted stellar particles in the disc region that originated from higher  $M_*^{\text{peak}}$  compared to those that contribute to training sets. We would expect this given the difficulty NNMs experience distinguishing between stars accreted from extremely massive objects and those formed *in situ* in a massive galaxy, as was discussed previously for Au20. These galaxies typically host significant *ex situ* discs (Gómez et al. 2017). We find that only one of the galaxies in this performance selection follows a similar distribution of source masses above  $10^8 M_\odot$ , while the rest have training set populations that fail to represent the highest mass contributors to their respective stellar discs. This can be understood from the results reported by Monachesi et al. (2019), where the assembly histories of the stellar haloes of the Auriga galaxies are studied in detail. Our findings for this particular subset of galaxies, with low  $f_{\text{recov}}$ , which have environments formed mainly from small satellites, agree with their results. However, more massive satellites have contributed to their discs, and hence to the evaluation set, with significant fractions of accreted stars. From Table 1, we can estimate  $f_{\text{acc}} = [0.11, 0.36]$  and a mean value of  $f_{\text{acc}} = 0.22$ . Our training set missed their contributions because these stars tend to be concentrated around the discs within  $\sim 20$  kpc as shown in Fig. 4 of Monachesi et al. Hence, they are missed in our training set by construction.



**Figure 11.** Cumulative mass fractions of the peak masses of satellites, as well as the peak masses of objects that have contributed to the outer stellar halo (identified by a unique peak mass IDs) as a function of the stellar mass of the source,  $M_{\star}^{\text{peak}}$ , for each Auriga galaxy, separated by the NNM performance. The distributions are shown for stars in the environments (coloured by either  $f_{\text{recov}}$  or  $P(TP)$ ) and for the accreted star particles in the corresponding galactic discs (black lines). Galaxies for which an NNM achieves  $P(TP) > 0.5 | P_a > 0.75$  are in the top panel, galaxies for which an NNM provides  $f_{\text{rec}} < 0.5 | P_a > 0.75$  are located in the middle panel, and galaxies for which an NNM provides  $P(TP) < 0.5 | P_a > 0.75$  are shown in the bottom panel.

Finally, galaxies for which NNMs result in lower  $P(TP)$  values (bottom panel, Au9, Au10, Au17, Au18, Au22) have distributions that match very well, but tend to lack star particles from higher-mass sources in both the population of accreted disc star particles, and the star particles in the halo and surviving satellites (see also fig. 8 in Monachesi et al. 2019). Due to the lack of massive contributors to the discs in these galaxies, the fraction of accreted star particles is

systematically lower. In fact, the mean values is  $f_{\text{acc}} = 0.03$ . As the FP rate is comparable to the fraction of accreted star particles to find in the disc, the  $P(TP)$  will be below 50 per cent. This FP rate could also be driven partially by endo-debris, as described in Section 4.2.

#### 4.4 Accretion source recovery: the GES analogue test

To prove the predictive power of our algorithm, we focus on the well-identified massive merger that the MW had roughly 10 billion years ago, the Gaia–Enceladus (GES) galaxy (Belokurov et al. 2018; Helmi et al. 2018). The stellar debris from this event covers nearly the full sky and, at the time of the merger, the GES is estimated to have contained nearly a quarter of the mass of the progenitor of the MW. One of the goals for our NNM training and evaluation method is to be able to detect debris from disrupted satellites, such as the GES, in the MW disc.

To this end, we generated a ‘GES-mass proxy’ sample for each tested Auriga halo. This proxy is created by sampling old stars ( $\tau > 10$  Gyr) from the satellite galaxy with the highest  $M_{\text{star}}$  within the virial radius of the central galaxy (Helmi et al. 2018). This definition, by necessity, neglects most of the physical and kinematic characteristics of the GES itself. A true analogue to the GES has been demonstrated by Bignone et al. (2019) to be rare and none of the Auriga initial conditions have been designed to include a GES event. By instead sampling appropriately aged stars from massive surviving satellites, we allow ourselves to obtain results from every Auriga volume. This approach will approximate an object composed of stars formed before the GES would have ceased star formation, though we will neglect the effects that accreted gas may have had on the development of endo-debris. The NNMs for these galaxies are trained with the same data set as previously, with the exception that the stars associated with the selected GES-proxy have been removed, to prevent foreknowledge about any of the stars in the structure. Since any accreted stars in GES-like structures will be old stars from a single satellite source, our NNM’s performance in this test should correspond with future performance in the discovery of large accreted components in the MW disc. While the isolation of stars belonging to GES-like objects or substructures will require additional post-processing, in an application of GANN with real data, this test will be indicative of ideal performance. While these results are based on the mass–metallicity relation of the Auriga simulations, as long as a clear mass–metallicity relation exists in the training and evaluation populations the NNM should be able to identify accreted stars.

Table 4 displays our NNM’s performance with a GES-proxy from the halo of each Auriga galaxy. The stellar mass ( $M_{\text{star}}$ ) of the GES-proxy, and the recovery of the stars at three  $P_a$  thresholds are displayed. In a majority (18/24) of our galaxies, more than 80 per cent of the star particles that make up the GES proxy are recovered, for  $P_a > 0.75$ . With a lower threshold of  $P_a > 0.50$ , every GES-proxy is recovered above 50 per cent.

## 5 CROSS-NNM PERFORMANCE TESTS

While our method of NNM training leads to models that are specialized towards each galaxy’s specific environment, certain environments provide a well-rounded training sample of potential accreted stars that is applicable more broadly. Tables 5 and 6 display the  $P(TP)$  and  $f_{\text{rec}}$  of each NNM trained in a given Auriga environment when applied to each Auriga galactic disc. Cells are coloured based on their values. Blue cells indicate values above 0.75, green indicates values above 0.5, and pink indicates values below 0.5. Columns



**Table 4.**  $f_{\text{recov}}$  for a GES proxy constituted of old stars ( $\tau > 10$  Gyr) from a single satellite source located in each Auriga galactic halo.

Halo	$\log_{10}M_*/M_\odot$	$f_{\text{recov}} P_a > 0.90$	$f_{\text{recov}} P_a > 0.75$	$f_{\text{recov}} P_a > 0.50$
2	9.35	0.15	0.45	0.63
3	8.64	0.67	0.89	0.97
4	8.75	0.34	0.95	0.99
5	8.17	0.16	0.73	0.95
6	7.98	0.06	0.40	0.89
7	8.07	0.04	0.13	0.52
9	8.30	0.46	0.82	0.93
10	8.23	0.32	0.91	1.00
12	8.45	0.26	0.83	0.93
13	8.07	0.34	0.88	0.98
14	7.94	0.22	0.90	0.97
15	9.09	0.09	0.50	0.84
16	8.46	0.28	0.99	1.00
17	7.90	0.85	0.99	1.00
18	8.52	0.24	0.48	0.68
19	8.23	0.16	0.83	0.99
20	8.27	0.22	0.72	0.98
21	8.69	0.04	0.64	0.95
22	7.78	0.72	0.78	0.85
23	8.64	0.07	0.24	0.81
24	8.67	0.08	0.45	0.81
26	8.76	0.51	0.83	0.92
27	8.43	0.50	0.93	0.98
28	8.52	0.92	0.98	1.00

Notes. The Auriga Id and stellar mass of the GES-proxy object is included (first and second columns). The  $f_{\text{recov}}$  for different thresholds  $t$  are given (third to fifth columns).

that consist of primarily green and blue in both tables demonstrates excellent NNM performance across the set of galactic discs.

Table 6 presents two clear columns representing galaxies that provided poor NNM training sets. Au7 and Au20 both share recent mergers. In both of these cases, these events create a disc environment that is composed of  $> 30$  per cent accreted star particles. In the case of Au7, a majority of the FN star particles originate from one of two merger events from 3.97 and 1.34 Gyr ago. Au20 presents a very similar situation. A single merger event that took place 2.48 Gyr ago contributed a majority of the FN disc stars. In both these cases, if we select only true *in situ* star particles from the disc to create the *in situ* half of the training set, the FNs disappear. This implies that the mislabelling is not due to chemical similarity between these accreted stars and the *in situ* population of the galactic disc. This is a demonstration of the weakness of our observationally motivated training set selection scheme, which is predicated on the disc being principally composed of *in situ* star particles, and was designed around an imposed inability to remove accreted contamination from the disc a priori. This is evidenced by the improved performance other NNMs display when executed on both Au7 and Au20.

### 5.1 Conglomerated training set

One approach we can use to ameliorate issues that arise due to galactic satellite environments that do not well or fully describe the accreted stellar material in the disc is conglomeration. By constructing a training set out of a wide survey of satellite galaxy, and halo star particles we can attempt to train a single model that can perform well on a wide assortment of simulated galaxies. Table 7 displays the results of training an NNM on the union of all the individual Auriga training sets, over a maximum of 100 training epochs, during which NNM weights were adjusted to model the training data. We can see that the variation of the results between galaxies is significantly reduced with  $P(TP)$  above 0.5 in all but eight galaxies at a  $P_a$  threshold of 0.5, and none at higher thresholds.

Recovery fraction varies more predictably with thresholds in  $P_a$ , since the dependence on the environment-specific features is reduced.

## 6 CONCLUSIONS

In this work, we have developed a machine learning method GANN for identifying accreted stars purely with chemical abundances and age. We used a suite of simulations from the Auriga project to build the NNM framework and tested its performance. These galaxies have MW mass-sized haloes with a variety of assembly histories.

We adopt two performance measures to quantify the classification performance in general,  $P(TP)$  and  $f_{\text{recov}}$ , calculated by assuming a probability  $P_a$  for a star particle to be classified as TP. Each performance indicator illustrates a different aspect of how reliable GANN labels are for each of our test galaxies.  $P(TP)$  measures the precision of the labels, and  $f_{\text{recov}}$  measures the completeness of the detected stars.

They are also more reliable indicators of performance than simply accuracy, which is not tailored to specific cases, and is misleading in situations with heavily imbalanced populations (Figs 3 and 4). We have shown that, while GANN is based on chemical abundance information and ages, the classification results in stellar populations that have the expected dynamical properties (Fig. 11). For example, the TN stars are rotation dominated ( $\epsilon_J \sim 1$ ), radially extended and with low heights above the discs. Conversely, while TP stars are also dominated by rotation, they show a larger dispersion in  $\epsilon_J$ , which is in agreement with the larger height achieved by this sample. Those stars misclassified have properties that distinguished themselves clearly (Figs 6–9).

Our NNM algorithm appears to identify endo-debris stars as *in situ* stars, as their chemical patterns mirror those of the satellites from which the gas that formed them originated. These stars tend to be slightly less  $\alpha$ -enriched at given  $[\text{Fe}/\text{H}]$  (Tissera et al. 2014). In general, because this gas component is transformed into stars as gas bound to the main host galaxy, the new born stars are considered by the merger tree ground-truth to have been formed *in situ*. This tension results in FPs and lowers the calculated  $P(TP)$  values, however it does not imply that the GANN is not functioning as intended. These miss-classified stars can provide information about the accretion of gas-rich mergers by using kinematical and spatial information if available. It is unknown how modelling of gaseous mixing will affect this, although by altering the chemical balance of the resulting stars to a point between that of the satellite and that of the primary galaxy, the  $P_a$  assigned by GANN will likely be lower, possibly reducing FP rates. On the other hand, stellar material in the disc that originates from accreted satellites with comparable mass to the progenitor galaxy may prove difficult to disentangle with just this method. Additional, physical and kinematic measurements will likely be necessary in those cases as shown in Fig. 8.

We have also demonstrated the performance of our method on specific tasks, such as identification of GES-mass proxy stellar structures, and the completeness of the recovered accretion history for all sources of accreted stars (Table 4). While our method struggles to recover large portions of the accreted stellar population in situations where the satellite and halo training set is not a fair reflection of sources of the accreted stars in the disc region, in the majority of cases it is able to recover substantial fractions of them. We find that our training method generates NNM models that are generally able to recover pieces of nearly every accretion source that is present in the disc. This lends NNMs incredible power to aid in the deconstruction of galactic accretion histories, as shown in Fig. 5.



**Table 5.** Cross-performance table for neural network  $P(TP)|P_a > 0.75$  for NNMs trained on selected Auriga galaxies (columns) evaluating the star particles from the same set of galaxies (rows).

Validation/training	2	3	4	5	6	7	9	10	12	13	14	15	16	17	18	19	20	21	22	23	24	26	27	28
2	0.4	0.6	0.5	0.6	0.8	0.7	0.6	0.7	0.6	0.7	0.5	0.6	0.6	0.5	0.6	0.6	0.7	0.5	0.6	0.7	0.6	0.6	0.5	0.5
3	0.4	0.6	0.6	0.6	0.7	0.6	0.6	0.7	0.6	0.6	0.5	0.6	0.6	0.5	0.6	0.6	0.8	0.6	0.6	0.7	0.6	0.6	0.5	0.5
4	0.4	0.5	0.7	0.6	0.5	0.5	0.6	0.5	0.5	0.6	0.5	0.7	0.7	0.5	0.6	0.6	0.6	0.5	0.5	0.5	0.6	0.5	0.4	0.6
5	0.4	0.6	0.5	0.6	0.7	0.7	0.5	0.7	0.6	0.7	0.5	0.5	0.5	0.4	0.6	0.5	0.7	0.5	0.6	0.7	0.5	0.6	0.5	0.5
6	0.5	0.6	0.5	0.5	0.7	0.7	0.5	0.7	0.6	0.7	0.4	0.6	0.6	0.5	0.6	0.6	0.8	0.5	0.6	0.7	0.5	0.5	0.5	0.4
7	0.6	0.6	0.8	0.8	0.8	0.9	0.8	0.8	0.8	0.8	0.7	0.8	0.8	0.7	0.8	0.8	0.9	0.6	0.7	0.8	0.8	0.7	0.5	0.8
9	0.5	0.5	0.4	0.4	0.6	0.8	0.4	0.6	0.5	0.7	0.4	0.6	0.5	0.4	0.5	0.5	0.7	0.4	0.5	0.6	0.4	0.4	0.4	0.4
10	0.2	0.3	0.2	0.2	0.4	0.6	0.2	0.5	0.3	0.6	0.2	0.3	0.3	0.2	0.3	0.3	0.7	0.3	0.3	0.4	0.2	0.3	0.2	0.2
12	0.4	0.6	0.6	0.6	0.7	0.7	0.6	0.7	0.6	0.7	0.5	0.6	0.6	0.5	0.6	0.6	0.7	0.6	0.6	0.7	0.6	0.5	0.6	0.6
13	0.4	0.6	0.5	0.5	0.7	0.7	0.5	0.7	0.6	0.7	0.4	0.5	0.6	0.4	0.6	0.5	0.7	0.5	0.5	0.6	0.5	0.5	0.5	0.5
14	0.6	0.8	0.6	0.8	0.9	0.9	0.7	0.9	0.8	0.9	0.7	0.7	0.8	0.7	0.8	0.7	0.9	0.7	0.8	0.8	0.7	0.8	0.7	0.7
15	0.2	0.3	0.6	0.5	0.4	0.5	0.4	0.4	0.4	0.5	0.3	0.6	0.5	0.3	0.5	0.5	0.6	0.3	0.3	0.3	0.5	0.2	0.3	0.4
16	0.4	0.5	0.5	0.5	0.7	0.6	0.5	0.7	0.5	0.6	0.4	0.5	0.5	0.3	0.6	0.5	0.7	0.4	0.5	0.6	0.5	0.5	0.4	0.4
17	0.3	0.3	0.2	0.3	0.4	0.7	0.2	0.5	0.4	0.7	0.3	0.3	0.3	0.3	0.3	0.3	0.7	0.3	0.3	0.4	0.2	0.2	0.2	0.2
18	0.3	0.4	0.3	0.4	0.5	0.6	0.3	0.6	0.4	0.6	0.3	0.4	0.4	0.3	0.4	0.4	0.7	0.4	0.4	0.5	0.3	0.3	0.3	0.3
19	0.5	0.6	0.6	0.7	0.8	0.8	0.7	0.8	0.7	0.8	0.6	0.7	0.7	0.5	0.7	0.7	0.8	0.6	0.7	0.8	0.6	0.6	0.6	0.6
20	0.7	0.7	0.7	0.7	0.9	0.8	0.7	0.8	0.8	0.8	0.8	0.6	0.7	0.7	0.7	0.7	0.9	0.7	0.8	0.9	0.7	0.8	0.7	0.7
21	0.5	0.7	0.6	0.6	0.8	0.7	0.6	0.8	0.6	0.7	0.5	0.7	0.7	0.5	0.7	0.6	0.8	0.6	0.6	0.7	0.6	0.6	0.6	0.6
22	0.3	0.3	0.2	0.3	0.4	0.5	0.2	0.4	0.3	0.4	0.2	0.3	0.3	0.3	0.3	0.3	0.5	0.3	0.3	0.4	0.2	0.3	0.3	0.2
23	0.6	0.6	0.6	0.7	0.8	0.9	0.6	0.8	0.7	0.9	0.6	0.7	0.7	0.6	0.7	0.7	0.9	0.7	0.7	0.8	0.6	0.7	0.6	0.6
24	0.4	0.5	0.5	0.6	0.7	0.5	0.5	0.7	0.5	0.6	0.5	0.5	0.6	0.4	0.6	0.5	0.7	0.5	0.6	0.7	0.5	0.6	0.5	0.5
26	0.6	0.7	0.7	0.7	0.8	0.8	0.7	0.8	0.7	0.8	0.6	0.8	0.7	0.7	0.7	0.7	0.8	0.7	0.7	0.8	0.7	0.7	0.7	0.6
27	0.4	0.7	0.6	0.6	0.7	0.8	0.6	0.7	0.6	0.7	0.6	0.7	0.7	0.6	0.7	0.7	0.8	0.6	0.7	0.7	0.6	0.6	0.6	0.6
28	0.6	0.7	0.8	0.7	0.8	0.8	0.7	0.8	0.7	0.8	0.6	0.8	0.8	0.6	0.8	0.8	0.9	0.7	0.7	0.7	0.7	0.7	0.7	0.7

Note. Cells are coloured based on performance thresholds, with pink indicating a  $P(TP) < 0.5$ , green a  $P(TP) < 0.75$ , and blue a  $P(TP) > 0.75$ .

**Table 6.** Cross-performance table for neural network  $f_{\text{recov}}|P_a > 0.75$  for NNMs trained on selected Auriga galaxies (columns) evaluating the star particles from the same set of galaxies (rows).

Validation/training	2	3	4	5	6	7	9	10	12	13	14	15	16	17	18	19	20	21	22	23	24	26	27	28
2	0.4	0.7	0.5	0.6	0.5	0.1	0.7	0.4	0.4	0.2	0.6	0.3	0.5	0.6	0.6	0.4	0.1	0.5	0.8	0.5	0.6	0.7	0.6	0.7
3	0.2	0.3	0.3	0.3	0.2	0.0	0.3	0.1	0.1	0.0	0.3	0.2	0.3	0.3	0.3	0.2	0.0	0.3	0.3	0.2	0.3	0.3	0.3	0.4
4	0.5	0.6	0.3	0.4	0.4	0.1	0.4	0.4	0.4	0.2	0.6	0.2	0.4	0.5	0.4	0.3	0.2	0.6	0.5	0.5	0.4	0.7	0.6	0.5
5	0.6	0.9	0.6	0.8	0.7	0.1	0.8	0.6	0.6	0.3	0.8	0.4	0.6	0.7	0.8	0.5	0.2	0.8	0.9	0.7	0.7	0.8	0.8	0.8
6	0.6	0.8	0.7	0.8	0.6	0.1	0.8	0.6	0.6	0.3	0.7	0.5	0.7	0.8	0.8	0.6	0.3	0.7	0.8	0.6	0.8	0.7	0.8	0.8
7	0.8	0.9	0.6	0.8	0.8	0.3	0.7	0.7	0.7	0.5	0.8	0.4	0.8	0.8	0.7	0.5	0.4	0.8	0.9	0.7	0.7	0.8	0.8	0.8
9	0.7	0.8	0.7	0.7	0.6	0.1	0.8	0.5	0.6	0.2	0.7	0.5	0.7	0.7	0.8	0.7	0.2	0.7	0.8	0.5	0.8	0.7	0.7	0.8
10	1.0	1.0	1.0	1.0	1.0	0.4	1.0	0.9	0.9	0.7	1.0	0.8	1.0	1.0	1.0	0.9	0.7	1.0	1.0	0.9	1.0	1.0	1.0	1.0
12	0.5	0.7	0.4	0.6	0.5	0.1	0.6	0.4	0.4	0.2	0.6	0.3	0.5	0.6	0.6	0.3	0.1	0.6	0.8	0.4	0.6	0.6	0.6	0.6
13	0.7	1.0	0.6	0.9	0.9	0.1	0.8	0.8	0.7	0.4	0.9	0.4	0.7	0.8	0.8	0.5	0.3	0.9	1.0	0.8	0.8	0.9	0.9	0.9
14	0.6	0.9	0.5	0.7	0.7	0.1	0.7	0.6	0.5	0.2	0.7	0.3	0.6	0.7	0.7	0.4	0.2	0.8	0.8	0.6	0.6	0.8	0.8	0.7
15	0.9	1.0	0.9	1.0	1.0	0.3	1.0	1.0	0.9	0.7	1.0	0.6	0.9	0.9	1.0	0.7	0.6	1.0	1.0	0.9	0.9	1.0	1.0	1.0
16	0.7	1.0	0.7	0.9	0.8	0.1	0.9	0.7	0.7	0.3	0.8	0.4	0.8	0.8	0.9	0.6	0.3	0.8	1.0	0.7	0.8	0.8	0.9	0.9
17	0.8	1.0	0.9	0.9	0.8	0.1	0.9	0.7	0.7	0.3	0.8	0.7	0.9	0.9	0.9	0.8	0.3	0.9	1.0	0.7	0.9	0.8	0.9	0.9
18	0.8	0.9	0.9	0.9	0.7	0.1	0.9	0.7	0.7	0.3	0.8	0.6	0.9	0.9	1.0	0.8	0.3	0.8	1.0	0.7	0.9	0.8	0.9	0.9
19	0.7	0.9	0.5	0.7	0.8	0.2	0.7	0.7	0.7	0.4	0.8	0.3	0.6	0.7	0.7	0.4	0.3	0.8	0.9	0.8	0.6	0.9	0.9	0.8
20	0.6	0.6	0.3	0.4	0.4	0.1	0.4	0.3	0.4	0.2	0.6	0.2	0.3	0.5	0.3	0.2	0.1	0.6	0.6	0.5	0.4	0.8	0.6	0.4
21	0.4	0.6	0.4	0.6	0.5	0.1	0.6	0.4	0.4	0.2	0.6	0.3	0.5	0.6	0.6	0.4	0.2	0.5	0.6	0.4	0.6	0.5	0.5	0.6
22	0.9	1.0	0.9	0.9	0.7	0.2	0.9	0.7	0.7	0.3	0.9	0.7	0.9	0.9	1.0	0.9	0.3	0.9	0.9	0.7	0.9	0.8	0.9	0.9
23	0.6	0.7	0.7	0.7	0.5	0.1	0.7	0.5	0.5	0.2	0.6	0.4	0.7	0.7	0.7	0.5	0.2	0.7	0.7	0.5	0.7	0.6	0.7	0.7
24	0.6	0.9	0.6	0.8	0.6	0.1	0.7	0.6	0.6	0.2	0.7	0.4	0.7	0.7	0.8	0.5	0.2	0.7	0.9	0.6	0.7	0.7	0.8	0.8
26	0.4	0.5	0.5	0.5	0.3	0.0	0.5	0.3	0.3	0.1	0.5	0.3	0.5	0.5	0.5	0.4	0.1	0.5	0.5	0.3	0.5	0.4	0.5	0.5
27	0.5	0.7	0.6	0.6	0.3	0.1	0.7	0.3	0.4	0.1	0.5	0.4	0.6	0.6	0.7	0.3	0.1	0.5	0.7	0.3	0.6	0.5	0.6	0.6
28	0.3	0.4	0.3	0.4	0.2	0.1	0.4	0.2	0.3	0.1	0.4	0.2	0.3	0.5	0.5	0.3	0.1	0.3	0.4	0.2	0.4	0.4	0.4	0.4

Note. Cells are coloured based on performance thresholds, with magenta indicating  $f_{\text{recov}} < 0.5$ , green  $\text{an}_f|_{\text{recov}} < 0.75$ , and blue  $\text{an}_f|_{\text{recov}} > 0.75$ .

**Table 7.** Neural network results for a single NNM trained with data from every Auriga galactic environment.

Halo	$f_{\text{recov}} P_a > 0.9$	$f_{\text{recov}} P_a > 0.75$	$f_{\text{recov}} P_a > 0.5$	$P(TP) P_a > 0.9$	$P(TP) P_a > 0.75$	$P(TP) P_a > 0.5$
2	0.15	0.49	0.73	0.72	0.62	0.54
3	0.11	0.37	0.55	0.71	0.62	0.56
4	0.14	0.38	0.54	0.70	0.63	0.56
5	0.16	0.45	0.62	0.69	0.61	0.54
6	0.20	0.50	0.66	0.70	0.61	0.53
7	0.23	0.54	0.69	0.73	0.65	0.56
9	0.25	0.56	0.72	0.73	0.63	0.54
10	0.32	0.61	0.75	0.72	0.58	0.50
12	0.30	0.60	0.75	0.72	0.59	0.50
13	0.30	0.61	0.77	0.72	0.59	0.50
14	0.29	0.61	0.77	0.73	0.60	0.52
15	0.31	0.64	0.79	0.72	0.60	0.51
16	0.31	0.65	0.80	0.72	0.59	0.50
17	0.32	0.67	0.81	0.70	0.57	0.48
18	0.33	0.68	0.82	0.70	0.56	0.47
19	0.33	0.67	0.82	0.70	0.57	0.48
20	0.31	0.65	0.80	0.71	0.58	0.49
21	0.31	0.64	0.79	0.72	0.58	0.49
22	0.32	0.65	0.80	0.70	0.57	0.48
23	0.32	0.65	0.80	0.71	0.57	0.49
24	0.31	0.65	0.80	0.70	0.57	0.49
26	0.30	0.64	0.79	0.71	0.58	0.50
27	0.30	0.64	0.79	0.71	0.58	0.50
28	0.29	0.62	0.78	0.72	0.59	0.51

The best GANN performance is achieved when the most possible sources of accreted stars are included in the training data set (Fig. 11). In cases where it is difficult to build a complete, accurate set of stars from satellites, we have shown that a selection of halo stars is sufficient for a training data set, at only a marginal cost to  $P(TP)$ , or precision. A large training set that includes stars from a wide range of satellites will increase the performance of GANN. When the assembly history of the stellar haloes and the surviving satellites involved only small galaxies, there is a systematically smaller fraction of accreted stars in the discs, which makes it difficult to extract them. Additionally, some accretion events could have contributed with large fraction of accreted stars to the discs but the remnants are also distributed close to the discs. As a consequence, these stars are excluded from the training sets to avoid confusion and, therefore, are missed. These cases suggest that a training set including stars from the environments of other massive galaxies could be a way to identify these stars even when the current environments do not include massive satellites.

In fact, we find that training sets can be combined to great effect, and that the NNM algorithm trained on this conglomerated data can be generally applied and achieve more consistent results than GANN trained on a single galactic environment (Table 7). This further improves our method’s applicability to observational data, by opening up the possibility of using stars and stellar populations from satellites and haloes of other galaxies to broaden an investigation into the MW’s stellar disc. This approach requires a large, varied training set, with multiple highly resolved stellar discs and haloes. This may become feasible as our observational techniques and technologies improve.

While our demonstrations use data from simulated MW-like galaxies, the input values can be gathered from any stellar data. In cases where we lack the required resolution to identify and accurately measure the chemical components of individual stars, chemical estimates from isochrones could be substituted, and final  $P_a$  estimates can be determined based on the likelihood of each

potential set of isochrone parameters, and the output  $P_a$  of each particular configuration. Hence, unlike previous efforts (Ostdiek et al. 2020), which have shown success at applying neural networks to observational MW data, our method does not require external data for training.

In the future, GANN can be improved by inclusion of data from other simulation suites to determine which findings are general, and which are isolated to the Auriga simulations. Machine learning and neural networks are a powerful set of tools for large-scale astronomical classification problems. As we develop the proper language and measures to describe their performance in the unique setting of galaxy formation, we can begin to expect their flexibility to lead to further exploration of their applications in this field.

## ACKNOWLEDGEMENTS

TJT acknowledges support from the ANID PhD fellowship. PBT acknowledges partial funding by FONDECYT 1200703/2020 (ANID) and Nucleo Milenio ERIS. PBT and FAG acknowledge support from ANID Basal Project FB210003. FAG acknowledges support from ANID FONDECYT Regular 1211370 and from the Max Planck Society through a ‘Partner Group’ grant. RG acknowledges financial support from the Spanish Ministry of Science and Innovation (MICINN) through the Spanish State Research Agency, under the Severo Ochoa Programme 2020-2023 (CEX2019-000920-S). This project has been supported partially by the European Union Horizon 2020 Research and Innovation Programme under the Marie Skłodowska-Curie grant agreement No. 734374.

## DATA AVAILABILITY

The data and programmes underlying this paper will be shared on reasonable request to the authors.

## REFERENCES

- Abadi M. G., Navarro J. F., Steinmetz M., Eke V. R., 2003, *ApJ*, 597, 21
- Ade P. A. R. et al., 2014, *A&A*, 571, A16
- Amorisco N. C., 2017, *MNRAS*, 464, 2882
- Barnes J. E., Hernquist L. E., 1991, *ApJ*, 370, L65
- Bell E. F. et al., 2008, *ApJ*, 680, 295
- Belokurov V., Erkal D., Evans N. W., Koposov S. E., Deason A. J., 2018, *MNRAS*, 478, 611
- Bignone L. A., Helmi A., Tissera P. B., 2019, *ApJ*, 883, L5
- Borsato N. W., Martell S. L., Simpson J. D., 2019, *MNRAS*, 492, 1370
- Bovy J., Rix H.-W., Schlafly E. F., Nidever D. L., Holtzman J. A., Shetrone M., Beers T. C., 2016, *ApJ*, 823, 30
- Brook C. B., Kawata D., Gibson B. K., Gallart C., Vicente A., 2020, *MNRAS*, 495, 2645
- Bullock J. S., Johnston K. V., 2005, *ApJ*, 635, 931
- Callingham T. M., Cautun M., Deason A. J., Frenk C. S., Grand R. J. J., Marinacci F., 2022, *MNRAS*, 513, 4107
- Chabrier G., 2003, *PASP*, 115, 763
- Chollet F. et al., 2015, Keras [https://keras.io/getting\\_started/faq/#how-should-i-cite-keras](https://keras.io/getting_started/faq/#how-should-i-cite-keras)
- Cooper A. P. et al., 2010, *MNRAS*, 406, 744
- Crain R. A. et al., 2015, *MNRAS*, 450, 1937
- D'Souza R., Bell E. F., 2018, *MNRAS*, 474, 5300
- Davis M., Efstathiou G., Frenk C. S., White S. D. M., 1985, *ApJ*, 292, 371
- Deason A. J., Mao Y.-Y., Wechsler R. H., 2016, *ApJ*, 821, 5
- Digby R. et al., 2019, *MNRAS*, 485, 5423
- Eggen O. J., Lynden-Bell D., Sandage A. R., 1962, *ApJ*, 136, 748
- Fattahi A. et al., 2020b, *MNRAS*, 497, 4459
- Fattahi A., Navarro J. F., Frenk C. S., 2020a, *MNRAS*, 493, 2596
- Fernández-Alvar E., Tissera P. B., Carigi L., Schuster W. J., Beers T. C., Belokurov V. A., 2019, *MNRAS*, 485, 1745
- Feuillet D. K., Sahlholdt C. L., Feltzing S., Casagrande L., 2021, *MNRAS*, 508, 1489
- Font A. S., Johnston K. V., Bullock J. S., Robertson B. E., 2006, *ApJ*, 646, 886
- Font A. S., McCarthy I. G., Crain R. A., Theuns T., Schaye J., Wiersma R. P. C., Dalla Vecchia C., 2011, *MNRAS*, 416, 2802
- Freeman K., Bland-Hawthorn J., 2002, *ARA&A*, 40, 487
- Gargiulo I. D. et al., 2019, *MNRAS*, 489, 5742
- Gómez F. A. et al., 2012, *MNRAS*, 423, 3727
- Gómez F. A. et al., 2017, *MNRAS*, 472, 3722
- Gómez F. A. et al., 2021, *ApJ*, 908, 27
- Gómez F. A., Helmi A., Brown A. G. A., Li Y.-S., 2010, *MNRAS*, 408, 935
- Gómez F. A., Minchev I., O'Shea B. W., Beers T. C., Bullock J. S., Purcell C. W., 2013, *MNRAS*, 429, 159
- Gómez F. A., White S. D. M., Marinacci F., Slater C. T., Grand R. J. J., Springel V., Pakmor R., 2016, *MNRAS*, 456, 2779
- Grand R. J. J. et al., 2017, *MNRAS*, 467, 179
- Grand R. J. J. et al., 2018, *MNRAS*, 474, 3629
- Gutcke T. A., Springel V., 2018, *MNRAS*, 482, 118
- Helmi A., 2020, *ARA&A*, 58, 205
- Helmi A., Babusiaux C., Koppelman H. H., Massari D., Veljanoski J., Brown A. G. A., 2018, *Nature*, 563, 85
- Helmi A., Navarro J. F., Nordström B., Holmberg J., Abadi M. G., Steinmetz M., 2005, *MNRAS*, 365, 1309
- Helmi A., White S. D. M., 1999, *MNRAS*, 307, 495
- Helmi A., White S. D. M., de Zeeuw P. T., Zhao H., 1999, *Nature*, 402, 53
- Hopkins P. F. et al., 2018, *MNRAS*, 480, 800
- Ioffe S., Szegedy C., 2015, in Bach F., David B., eds, Proceedings of the 32nd International Conference on Machine Learning, Vol. 37, p. 448 <https://proceedings.mlr.press/v37/ioffe15.html>
- Karakas A. I., 2010, *MNRAS*, 403, 1413
- Khoperskov S. et al., 2022, preprint ([arXiv:2206.04522](https://arxiv.org/abs/2206.04522))
- Klambauer G., Unterthiner T., Mayr A., Hochreiter S., 2017, preprint ([arXiv:1706.02515](https://arxiv.org/abs/1706.02515))
- Koppelman H. H., Helmi A., Massari D., Price-Whelan A. M., Starkenburg T. K., 2019, *A&A*, 631, L9
- Kruijssen J. M. D. et al., 2020, *MNRAS*, 498, 2472
- Kruijssen J. M. D., Pfeffer J. L., Reina-Campos M., Crain R. A., Bastian N., 2018, *MNRAS*, 486, 3180
- Lambas D. G., Tissera P. B., Alonso M. S., Coldwell G., 2003, *MNRAS*, 346, 1189
- Lecun Y., Bottou L., Orr G., Müller K.-R., 1998, in Orr G., Müller K., eds, Efficient BackProp, Neural Networks: Tricks of the trade, Springer
- Libeskind N. I. et al., 2020, *MNRAS*, 498, 2968
- Mackereth J. T. et al., 2018, *MNRAS*, 482, 3426
- Malhan K., Ibata R. A., Martin N. F., 2018, *MNRAS*, 481, 3442
- Marinacci F., Pakmor R., Springel V., 2013, *MNRAS*, 437, 1750
- Martin G. et al., 2022, *MNRAS*, 513, 1459
- Martínez-Delgado D. et al., 2010, *AJ*, 140, 962
- Minchev I., Quillen A. C., Williams M., Freeman K. C., Nordhaus J., Siebert A., Bienaymé O., 2009, *MNRAS*, 396, L56
- Monachesi A. et al., 2019, *MNRAS*, 485, 2589
- Monachesi A., Gómez F. A., Grand R. J. J., Kauffmann G., Marinacci F., Pakmor R., Springel V., Frenk C. S., 2016, *MNRAS*, 459, L46
- Moreno J. et al., 2019, *MNRAS*, 485, 1320
- Necib L. et al. 2020a, *Nat. Astron.*, 1078, 2397
- Necib L., Ostdiek B., Lisanti M., Cohen T., Freytsis M., Garrison-Kimmel S., 2020b, *ApJ*, 25, 1538
- Niculescu-Mizil A., Caruana R., 2007, in Meila M., Shen X., eds, Proceedings of Machine Learning Research Vol. 2, Proceedings of the Eleventh International Conference on Artificial Intelligence and Statistics, PMLR, San Juan, p. 339
- Ostdiek B. et al., 2020, *A&A*, 636, A75
- Patton D. R., Grant J. K., Simard L., Pritchett C. J., Carlberg R. G., Borne K. D., 2005, *AJ*, 130, 2043
- Perez J., Michel-Dansac L., Tissera P. B., 2011, *MNRAS*, 417, 580
- Perez M. J., Tissera P. B., Scannapieco C., Lambas D. G., de Rossi M. E., 2006, *A&A*, 459, 361
- Pillepich A., Madau P., Mayer L., 2015, *ApJ*, 799, 184
- Portinari L., Chiosi C., Bressan A., 1998, *A&A*, 334, 505
- Purcell C. W., Bullock J. S., Tollerud E. J., Rocha M., Chakrabarti S., 2011, *Nature*, 477, 301
- Quillen A. C., Minchev I., Bland-Hawthorn J., Haywood M., 2009, *MNRAS*, 397, 1599
- Robin A. C. et al., 2012, *A&A*, 543, A100
- Roman N. G., 1950, *ApJ*, 112, 554
- Rucht G. R. et al., 2015, *MNRAS*, 450, 2874 (R15)
- Ruiz-Lara T., Gallart C., Bernard E. J., Cassisi S., 2020, *Nat. Astron.*, 4, 965
- Rupke D. S. N., Kewley L. J., Barnes J. E., 2010, *ApJ*, 710, L156
- Scannapieco C., White S. D. M., Springel V., Tissera P. B., 2009, *MNRAS*, 396, 696
- Schaye J. et al., 2014, *MNRAS*, 446, 521
- Searle L., Zinn R., 1978, *ApJ*, 225, 357
- Springel V. et al., 2008, *MNRAS*, 391, 1685
- Springel V., 2005, *MNRAS*, 364, 1105
- Springel V., 2010, *MNRAS*, 401, 791
- Springel V., Hernquist L., 2003, *MNRAS*, 339, 289
- Thielemann F.-K. et al., 2003, *Nucl. Phys. A*, 718, 139
- Tissera P. B., 2000, *ApJ*, 534, 636
- Tissera P. B., Beers T. C., Carollo D., Scannapieco C., 2014, *MNRAS*, 439, 3128
- Tissera P. B., Machado R. E. G., Carollo D., Minniti D., Beers T. C., Zoccali M., Meza A., 2018, *MNRAS*, 473, 1656
- Tissera P. B., Rosas-Guevara Y., Bower R. G., Crain R. A., Lagos C. d. P., Schaller M., Schaye J., Theuns T., 2019, *MNRAS*, 482, 2208
- Tissera P. B., Scannapieco C., Beers T. C., Carollo D., 2013, *MNRAS*, 432, 3391
- Travaglio C., Hillebrandt W., Reinecke M., Thielemann F.-K., 2004, *A&A*, 425, 1029

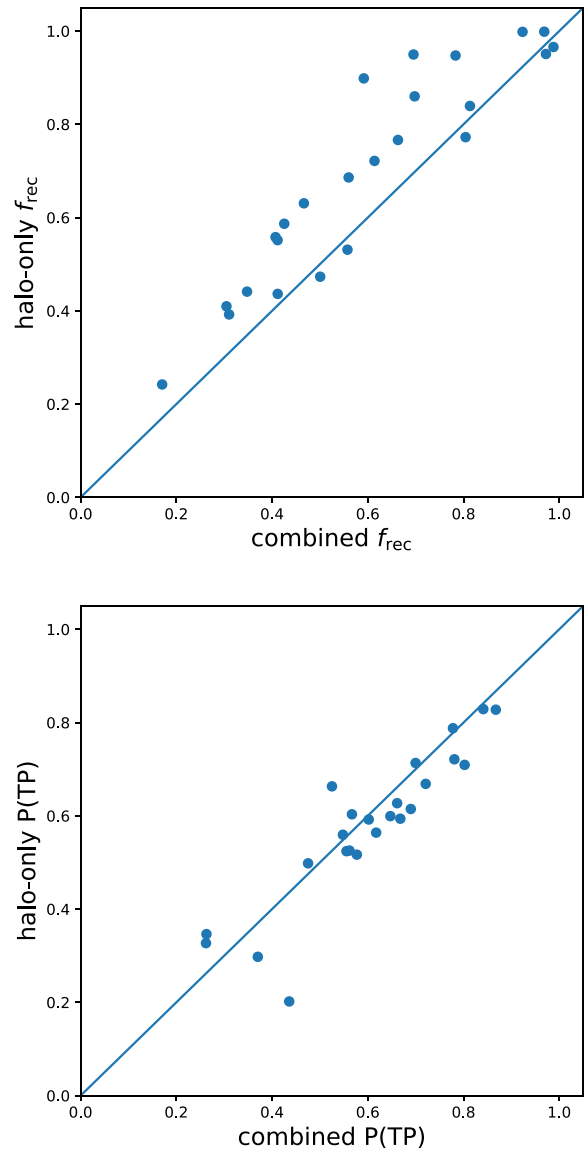


Veljanoski J., Helmi A., Breddels M., Posti L., 2018, *A&A*, 621, A13  
 Venn K. A., Irwin M., Shetrone M. D., Tout C. A., Hill V., Tolstoy E., 2004, *AJ*, 128, 1177  
 Vera-Casanova A. et al., 2021, *MNRAS*, 514, 4898  
 Vogelsberger M., Genel S., Sijacki D., Torrey P., Springel V., Hernquist L., 2013, *MNRAS*, 436, 3031  
 Zolotov A., Willman B., Brooks A. M., Governato F., Hogg D. W., Shen S., Wadsley J., 2010, *ApJ*, 721, 738

## APPENDIX A: TRAINING SET MAKEUP COMPARISONS

While we have displayed the individual training subselection performances alongside each other in Fig. 3, we have also directly compared the best alternative training set composition with our final, combined choice in Fig. A1, for a threshold of  $P_a > 0.75$ . This second-best selection is entirely composed of stars from the galactic stellar halo past 25 kpc from the Galactic Centre. On average, using this training set increases our  $f_{\text{rec}}$  with a mild decrease in  $P(TP)$ . This can be explained by the fact that the stellar halo is almost entirely composed of stellar debris from satellites that have either passed through or merged with the central galaxy (Bell et al. 2008). This implies that the chemistry-age trend information of any accreted stars in the galactic disc should be represented in this single set of training data. In cases where the halo is dominated by the debris from relatively few objects, however, extra care will be required to prevent the NNM from learning only to identify stars from these objects at the expense of others.

These results provide a good motivation for the use of halo-only training sets in cases where satellite stellar information is difficult to obtain, or of low quality. This will be an advantage particularly in an observational use-case, where significantly more information exists on individual halo stars than for stars in orbiting satellites.



**Figure A1.** Comparison of NNM results when trained on the final combination data set, and a set composed entirely of halo stars greater than 25 kpc from the Galactic Centre. At a threshold of  $P_a > 0.75$ , halo-only NNMs have systematically higher  $f_{\text{rec}}$  and systematically lower  $P(TP)$ , indicating that they are slightly less distinguishing than NNMs trained on data that include satellite stars.

This paper has been typeset from a  $\text{\LaTeX}$  file prepared by the author.