

\ 488 \

**Duration Models and Differential Evolution  
in the Analysis of Large Data Sets**

by

Michele Lalla<sup>1</sup>  
Sandra Paterlini<sup>2</sup>

April 2005

Università degli Studi di Modena e Reggio Emilia  
Dipartimento di Economia Politica  
Via Berengario,51  
41100 Modena (Italia)

<sup>1</sup> e-mail: [michele.lalla@unimore.it](mailto:michele.lalla@unimore.it)

<sup>2</sup> e-mail: [sandra.paterlini@unimore.it](mailto:sandra.paterlini@unimore.it)



# DURATION MODELS AND DIFFERENTIAL EVOLUTION IN THE ANALYSIS OF LARGE DATA SETS

Michele Lalla\*, Sandra Paterlini

*Department of Political Economics, Via Jacopo Berengario 51, 41100 Modena, Italy*

---

## **Abstract**

Two measures of unemployment duration were obtained for each individual from data collected by Istat through the Quarterly Labour Force Survey. One measure was the length of on-going spells of unemployment, declared by the interviewed individual in a first wave and suitably adjusted considering information in a second wave (Spell Answers). The other was the time elapsed between the dates of the end of the previous job and the beginning of the current job in the second wave (Spell Reconstructions). They were modelled by traditional duration models via a mixture distribution of the answered and reconstructed spells, instead of using their minimum. The likelihood of the mixture is highly complex with a large number of covariates. Hence, classical optimisation methods do not provide robust parameter estimations. A stochastic search algorithm, called Differential Evolution, is proposed to tackle the numerical optimisation problem. In fact, even if DE is still rather unknown, it proves to be consistently and clearly superior to other search heuristic and classical optimisation approaches in many applications. Moreover, it is very simple to implement and requires little or no parameter tuning. A comparison between the ordinary duration models based on a sole unemployment spell for individuals (spell answers or spell reconstructions) is also reported.

*JEL classification:* C41, J64

*Keywords:* Unemployment duration, unobserved heterogeneity, heaping effect, Differential evolution, proportional hazard model

---

## **1. Introduction**

The average length of time that workers spend seeking a job is an important indication of economic welfare, but, despite this role, its measurement still appears elusive, as is the question: How long do spells of unemployment last? One reason is almost an ontological issue, as it lies in the addition of the fourth

---

\* Corresponding author.

*E-mail address:* lalla.michele@unimore.it

dimension to the sampling strategy: survey populations constantly change over time in the composition and the characteristics of their members, giving rise to many problems and different objectives for analysis (Duncan and Kalton, 1987). There are a variety of sample designs for collecting data at several points of time. Each of them varies in the amount and kind of overlaps between periods, *i.e.*, the percentages of the same statistical units to retain in the sample for each wave, or round, of data collection and the number of waves. The Italian Quarterly Labour Force Survey (QLFS) is conducted by Istat and uses a rotation scheme 2-2-2 for the sampling units, which are families. Each rotation group remains in the survey for two consecutive quarters, drops out for two subsequent quarters, and then returns for two more consecutive quarters, as described in Table 1. Each survey consists of a point-in-time data collection, as is the Current Population Survey (CPS), and it cannot measure important aspects of phenomena enduring over time (Kiefer et al., 1985). However, the rotation scheme acts firstly to maintain an up-to-date sample of a changing population, secondly to reduce panel conditioning and panel loss with respect to the nonrotating panel survey, and thirdly to detect the transitions between the labour market states of the individuals interviewed in two different waves,  $t_1$  and  $t_2$ . For example, in Table 1, group C was interviewed in 1998:1 and 1998:2, or group E in 1997:4 and 1998:3 (Torelli and Trivellato, 1988).

**Table 1**  
Rotating panel design of the Italian Quarterly Labour Force Survey

Year	Q	Month	Rotation groups									
1997	4	October	A	B		E	F					
1998	1	January		B	C		F	G				
1998	2	April			C	D		G	H			
1998	3	July				D	E		H	I		
1998	4	October					E	F		I	L	
1999	1	January						F	G		L	M

The ordinary transitions in the labour market considered referred to three states (professional conditions) —Employed (E), Unemployed (U), Out-of-the-Labour-Force (OLF)— and the standard definition of unemployment duration is given by the minimum between two spells: (i) job search duration, hereafter referred to as *spell answer* (SA) and denoted by the random variable  $T_A$ , and (ii) length of the period since the last job held, hereafter referred to as *spell reconstruction* (SR), and denoted by the random variable  $T_R$  (EUROSTAT,

1996).<sup>1</sup> The job-seeker is subject to some specific conditions: (a) at least fifteen years old, (b) without work during the reference week, (c) available to start work or to accept a job offer before the end of the next two weeks, (d) «actively» searching for an occupation. He/she begins the action at a certain point in time,  $t_{B;i}$ , and continues until the end, at another point in time,  $t_{E;i}$ , because he/she finds a job or he/she reduces the «intensity» of the search, thus leaving the labour force. Therefore, generally speaking, the unemployment spell for the  $i$ -th individual would be the random variable  $T_i = t_{E;i} - t_{B;i}$ . However, it is not convenient to detect the intensity of the search over time and condition (d) is collected at the date of survey, ascertaining that the interviewee carried out at least one job search attempt in the previous four weeks, with respect to the reference week. The situation is illustrated in Fig. 1, where calendar time is the abscissa, the lower bound of a horizontal segment indicates the time when the spell started, the upper bound shows when it concluded. The length of each segment is an observation of a random variable, termed *completed spell* of unemployment. However, almost all spells will be in progress when each survey is conducted, i.e., the durations collected by the Italian QLFS are *incomplete spells* of unemployment, as in an ordinary CPS. In Fig. 1, case  $c_1$  represents the standard situation, where all data about employment duration are available. The other cases illustrate only some situations with missing data or nonsampling variable errors, such as processing and field errors in coding and tabulating components. For example,  $c_2$  denotes a direct transition into the employment state, which is generally not collectable,  $c_3$  refers to the unavailable date of the beginning of an unemployment spell indicated by a question mark (but limited by the time interval elapsing between two consecutive waves at  $t_1$  and  $t_2$ ),  $c_4$  concerns a right-censored spell, and so on.

---

<sup>1</sup> A new definition of unemployment (EC Commission Regulation No. 1897/2000) may cause a break between 2000 and 2001, but it is fully compatible with ILO standards and increases comparability in the EU, not yet fully applied in Italy (EUROSTAT, 2002).

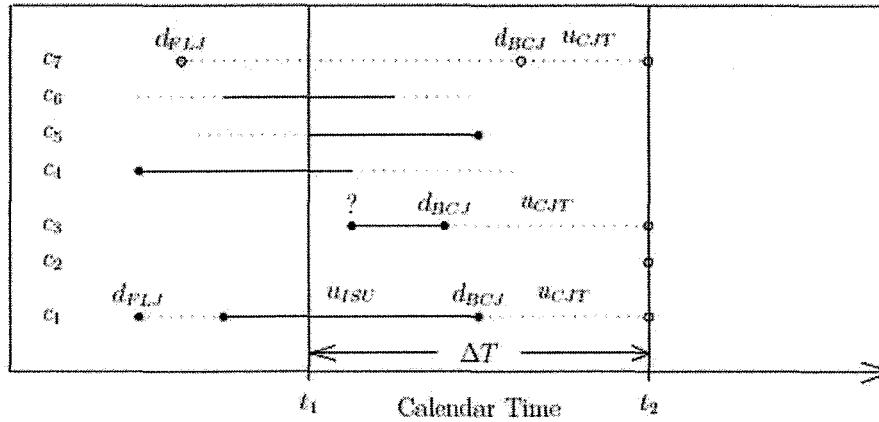


Fig. 1 – Different types of spells collectable between two generic waves conducted at  $t_1$  and  $t_2$ , respectively.

The analysis of duration data through the hazard function has become a standard technique in the last two decades and it is currently used in many scientific and social fields, although the terminology changes from one discipline to another, thus known as reliability theory, survival analysis, and duration data (Kalbfleisch and Prentice, 1980; Cox and Oakes, 1984; Lancaster, 1990). Analyses of the labour market and turnover through the life table method date back to Silcock (1954), but this method received more attention after the applications of Nickell (1979a,b) and Lancaster (1979) and has been extensively developed in recent decades. However, model building and parameter estimation can be difficult tasks in the analysis of labour market transitions, when the distribution function of duration is not easy to handle, all spell lengths are censored, and the number of explanatory variables (covariates) is extremely high. In the absence of these problems, unemployment spells can be handled through highly standardized methods encompassing almost routine procedures (Kleinbaum, 1996; Lee, 1993), but the data modelled below present two specific complications, namely a complex distribution function and a large set of covariates.

The aim of the paper is to analyse unemployment spells using traditional duration models, attempting to use both of these two unemployment spells simultaneously, combined in a mixture of distributions. Generally, researchers should choose only one measure, which could be one of them, or their minimum. To account for unobserved heterogeneity and heaping effect, the likelihood of the mixture model becomes highly complex with a large number of explanatory variables. Hence, a robust estimation of the parameters in duration models is

difficult to achieve using classical optimisation methods. We propose to use a stochastic search algorithm, called Differential Evolution (DE), to tackle the numerical optimisation problem. In fact, even if DE is still rather unknown, it proves to be consistently and clearly superior to other search heuristic and classical optimisation approaches in many applications (Storn and Price, 1995). Moreover, DE is very simple to implement and requires little or no parameter tuning. Comparison with duration models on the single measures, SA and SR, is also reported in the following.

For the sake of brevity, the transitions considered in the following refer to the movement of individuals from the unemployment state to the employment state. The paper proceeds as follows. Section 2 illustrates the available data and the procedure used to determine the two measures of unemployment duration. Section 3 outlines Cox's Proportional Hazards Model (CPHM) with a Weibull specification of the baseline hazard, the inclusion of the unobserved heterogeneity, the heaping effect, and the likelihood functions of the models. Section 4 contains a brief description of the DE stochastic search algorithm. Section 5 describes the covariates introduced in the model and the estimation of parameters. Section 6 concludes the paper with some comments and remarks.

## 2. Sampling data

The unemployment durations modelled below were obtained from six waves of the Italian QLFS (1997:4–1999:1), as illustrated in Table 1, *i.e.*, six databases were available, starting from the fourth quarter of 1997 to the first quarter of 1999. They cover a period of 18 months and each file contains more than 200,000 individuals. The choice of the investigation period was arbitrary, but such that it was long enough to determine the complete unemployment spells and short enough to avoid nonstationary behaviour and the possible presence of economic shocks.

For each job seeker, the questionnaire used by the QLFS provides two elements from which it is possible to evaluate unemployment spell duration. One concerns the answer to the Question: How many months have you been looking for a new job? (Q46). The spell answer ranges from 1 to 99 months and it is the length of the on-going (incomplete) spell of unemployment, as the respondent is currently unemployed,  $u_{ISU}$ . Therefore, the completed spell of unemployment should be determined considering the transition that took place between two surveys (waves) and the length of current job tenure,  $u_{CT}$ , obtained in the second wave by the answer to the question: When did you begin your current job? (Q24, which requires specification of the month and year,  $d_{BCJ}$ ). Hence, the completed spells for transitions from unemployment to employment is given by:

$T_A = u_{ISU} + 1_{CJT}(\Delta t - u_{CJT}) + (1 - 1_{CJT})\Delta t / 2$ , where  $T_A$  denotes the so-called spell answer (SA),  $\Delta t$  is the time interval between the two linked surveys detecting transition occurrence (see Fig. 1),  $1_{CJT}$  is an indicator variable equal to 1 when  $u_{CJT}$  is not missing and less than  $\Delta t$ . Otherwise,  $1_{CJT}$  is equal to 0. When  $u_{CJT}$  is greater than  $\Delta t$ , presumably there is an error in the data.

The other evaluation of unemployment duration considers the time elapsed between the dates of the end of the previous job and the beginning of the current job. The former is generally obtained in the first wave by the answer to the question: When did your last job end? (Q38, which requires specification of the month and year,  $d_{FLJ}$ ). The latter is usually given by  $d_{BCJ}$ , defined previously. Therefore, for individuals with changes in the unemployment state between two waves, it is possible to determine the time elapsed between two jobs which could be an approximate measure of an unemployment spell:  $T_R = g(d_{BCJ}, d_{FLJ})$ , where  $T_R$  denotes the so-called spell reconstruction (SR) and  $g(\cdot)$  is a function computing the length (in months) of a period delimited by two dates.

A possible impreciseness of  $T_R$  lies in the practical process of job searching. In fact, job losers/leavers could remain out-of-the-labour-force because they are not looking for work after losing/leaving job. Therefore, in abstract terms,  $T_R$  should be greater than or equal to  $T_A$ , but the two types of unemployment spells are not always available (missing data) and  $T_R$  is not always greater than or equal to  $T_A$ . However,  $T_R$  may also assume values that are too high —  $t_{R,i}$  was greater than 120 months for 457 out of 15123 individuals with  $T_R$  being available (3.5%), where the linked and selected units amounted to 20617—, while  $T_A$  ranged between ½ to 108 months involving 13309 individuals. For the 457 individuals with  $t_{R,i} > 120$  months,  $t_{A,i}$  was never missing and only 26.9% of them answered «99 months» to Q46. However, the latter were eliminated from the sample and the number of cases became 20160. For this reduced data set, the distribution of differences between the two durations,  $d_i = t_{A,i} - t_{R,i}$ , is reported in Table 2: it showed a positive mean ( $\bar{d} = 4.1$  months), skewed to the right ( $\gamma_1 = 0.368$ ), and also proved to have a pronounced leptokurtosis ( $\gamma_2 = 3.792$ ). The latter apparently implies the contrary of what was expected, *i.e.*,  $t_{A,i}$  is more frequently greater than  $t_{R,i}$ . However, with the inclusion of the 457 individuals eliminated, the conclusions overturned:  $\bar{d} = -4.7$  months,  $\gamma_1 = -3.368$ , and  $\gamma_2 = 22.220$ , as expected.



There are nine possible transitions between the three professional conditions (E, U, OLF), but some of them generate spell durations that are incomplete and/or over-represent short lengths, such as transitions from employment to employment or from OLF to OLF, while others are not of direct interest here, such as those from employment to OLF for retirement. The selected transitions are reported in Table 3, together with distinctions as to the characteristics of  $u_{CJT}$  used to determine  $t_{A,i}$ .

**Table 2**

Absolute frequency and percentage distribution of the differences between the spell answers and spell reconstructions spells ( $d_i = t_{A,i} - t_{R,i}$ ) with the lower (LB) and upper bounds (UB) of the class intervals (the number of missing values is 12,712)

<b>LB</b>	$-\infty$	-10.5	-5.5	-2.5	-1.5	-0.5	0.5	1.5	2.5	5.5	10.5	<b>Total</b>
<b>UB</b>	-10.5	-5.5	-2.5	-1.5	-0.5	0.5	1.5	2.5	5.5	10.5	$+\infty$	
$n_i$	1019	263	288	164	672	1638	549	230	439	440	1746	<b>7,448</b>
%	13.7	3.5	3.9	2.2	9.0	22.0	7.4	3.1	5.9	5.9	23.4	<b>100.0</b>

**Table 3**

Number of individuals and column percentages for the transitions detected between two waves

Transitions	Conditions	Employed	Unemployed	Out-of-the-Labour-Force	Total			
Employed	$u_{CJT} < \Delta t$	2221	17.1		2221			
	$u_{CJT} \geq \Delta t$	1774	13.6		1774			
	$u_{CJT} \geq \Delta t$	1190	9.2		1190			
Unemployed	$u_{CJT}$ missing	677	5.2		677			
	$\Delta t > u_{ISU-2}$		551	100	551			
				6606	100	6606		
Out-of-the-Labour-Force	$u_{CJT} < \Delta t$	1770	13.6		1770			
	$u_{CJT} \geq \Delta t$	3150	24.2		3150			
	$u_{CJT}$ missing	2221	17.1		2221			
<b>Total</b>		13003	100%	551	100%	6606	100%	20160

*Legend:*  $u_{ISU-2}$  denotes an incomplete spell of unemployment in the second wave

### 3. Models for unemployment duration

Let  $T_i$  be a random variable denoting the completed unemployment spell of the  $i$ -th individual and  $t_i$ , its observed value in months or weeks or days. Let  $\mathbf{x}_i(t)$  be a (row) vector of time-dependent and independent explanatory variables (covariates) representing the individual circumstances of the  $i$ -th job seeker such as, personnel characteristics (gender, age, education), family information (size, number of children, number of employed members) or labour market status (unemployment rate, benefits). A job seeker's conditional probability of leaving unemployment in a short interval  $(t, t + dt)$  is given by the product of the two elements: the probability of receiving a job offer,  $q[t, \mathbf{x}_i(t)]$ , and the probability of accepting it, which implies that the wage offered exceeds the reservation wage,  $\xi[t, \mathbf{x}_i(t)]$  (Lancaster, 1990; Narendranathan and Stewart, 1993). Therefore, the conditional probability of leaving unemployment within the short interval  $(t, t + dt)$  is the hazard

$$h[t, \mathbf{x}_i(t)] dt = q[t, \mathbf{x}_i(t)] \left[ \int_{\xi[t, \mathbf{x}_i(t)]}^{\infty} f(w) dw \right] = q[t, \mathbf{x}_i(t)] a\{\xi[t, \mathbf{x}_i(t)]\}, \quad (1)$$

where  $f(w)$  is the distribution of wages relative to the vacancies in the labour market. The probability  $q[t, \mathbf{x}_i(t)]$  expresses the job seeker's possibilities of finding a vacancy and being offered the job, given that he or she is available. The acceptance probability,  $a\{\xi[t, \mathbf{x}_i(t)]\}$ , is generally affected by individual factors concerning the stopping strategy and the parameters of the vacancy-wage distribution.

It is possible to model the hazard function alone, ignoring the underlying choice structure, although it loses some distinctive aspects of the job seekers' behaviour. Different specifications of  $h[t, \mathbf{x}_i(t)]$  allow the model to deal with the problem of nonstationarity, as well as with other features that may arise in empirical contexts (Amemiya, 1985, pp. 433-455). The most frequently reduced form is expressed in a proportional hazards model (Cox and Oakes, 1984)

$$h(t_i, \mathbf{x}_i) = \frac{f(t_i, \mathbf{x}_i)}{1 - F(t_i, \mathbf{x}_i)} = h_0[t_i; \boldsymbol{\theta}] \varphi(\mathbf{x}_i; \boldsymbol{\beta}), \quad (2)$$

where  $f(t_i, \mathbf{x}_i)$  and  $F(t_i, \mathbf{x}_i)$  are the density and the distribution functions of  $T_i$ , respectively,  $h_0(t_i, \boldsymbol{\theta})$  is the baseline hazard at time  $t_i$  for the  $i$ -th individual with  $\mathbf{x}_i = 0$ . The function  $\varphi(\mathbf{x}_i; \boldsymbol{\beta})$  denotes the impact of covariates  $\mathbf{x}_i$  on the baseline hazard, and  $\boldsymbol{\beta}$  is the vector of parameters associated with them. Various

specifications of  $h_0(t_i, \theta)$  account for different distributions of  $T_i$  and therefore, the shapes of the baseline hazard such as the exponential, which is memoryless because it implies a constant hazard, the Weibull, the gamma, the log-logistic, and so on (Kiefer, 1988; Lancaster, 1979). The log-linear form for  $\varphi(\mathbf{x}_i; \beta) = \exp(\mathbf{x}_i \beta)$  is often used to express the impact of covariates (Cox, 1972) and the hazard function becomes  $h(t_i, \mathbf{x}_i) = h_0(t_i, \theta) \exp(\mathbf{x}_i \beta)$ .

Changes occurring over time in the characteristics of individuals and the effects of the initial attributes on the evolution of the professional positions/conditions, or on the transitions between labour force states, represent the main topics of unemployment duration analysis. One aspect concerns the attenuation or accentuation of the impact produced by the starting attributes throughout the subsequent experiences over time, *i.e.*, *state dependence* (Heckman, 1981). Another aspect concerns the completeness of the selected individual characteristics and/or their persistence over time, *i.e.*, some variations across the sampling units (or over time for the same sampling units) may not have been included in the model due to measurement errors or omission (*heterogeneity*). Although this aspect is intrinsic in all statistical models, it leads to peculiar effects in the analysis of unemployment spells (Blossfeld and Hamerle, 1992).

In a duration model, as formulated in equation (2), state dependence is expressed by the baseline hazard  $h_0(t_i, \theta)$ , while the heterogeneity is captured by a set of explanatory variables,  $\mathbf{x}_i$ . *Unobserved* heterogeneity induced by omitted variables may be introduced on the scale parameter of the distribution assumed for  $T_i$ , considered as a continuous random variable (Heckman and Singer, 1984a,b; Heckman, 1991). However, identification of the distribution for the scale parameter is not easy and the choice is conditioned by computational difficulties.

For the available data,  $T_i$  was assumed to be Weibull-distributed. Therefore,  $h_0(t_i, \theta) = \alpha \lambda (\lambda t)^{\alpha-1}$  and the hazard is monotonic: increasing if  $\alpha > 1$ , decreasing if  $\alpha < 1$ , and constant if  $\alpha = 1$ . Thus, a value of  $\alpha$  greater (or lower) than 1 implies an increase (or decrease) in the conditional probability that an unemployed individual will find a job shortly, as the unemployment spell increases in length. A value of  $\alpha = 1$  implies a memoryless job-seeking process, *i.e.*, the hazard function is constant and there is no duration dependence. The density function of  $T_i$  will be

$$f(t_i, \mathbf{x}_i; \lambda, \alpha, \beta) = \alpha \lambda (\lambda t)^{\alpha-1} \exp[\mathbf{x}_i \beta - (\lambda t)^\alpha \exp(\mathbf{x}_i \beta)], \quad (3)$$

but the assumption that  $T_i$  is Weibull-distributed,  $W(t; \lambda, \alpha)$ , is data-dependent, *i.e.*, it will be ascertained by examining the data. If heterogeneity is introduced on the scale parameter,  $\lambda$ , it becomes a continuous random variable,  $\Lambda$ . An interesting solution is obtained by assuming again that  $\Lambda$  is Weibull-distributed,  $W(\lambda; \vartheta, \alpha)$ , with the scale parameter  $\vartheta$  and the same shape parameter,  $\alpha$ , of the distribution of  $T_i$  (Lancaster, 1990, pp. 65-70; Lalla and Pattarin, 2001). Let  $\phi(\lambda; \vartheta, \alpha)$  be the density function of  $\Lambda$ . Then, the density of the distribution of completed spell lengths is given by

$$\psi(t_i, \mathbf{x}_i; \vartheta, \alpha, \boldsymbol{\beta}) = \int_0^{\infty} f(t_i, \mathbf{x}_i; \lambda, \alpha, \boldsymbol{\beta}) \phi(\lambda; \vartheta, \alpha) d\lambda = \frac{\alpha t_i^{\alpha-1} \vartheta^\alpha \exp(-\mathbf{x}\boldsymbol{\beta})}{[t_i^\alpha + \vartheta^\alpha \exp(-\mathbf{x}\boldsymbol{\beta})]^2} \quad (4)$$

and its corresponding hazard function (Lalla and Pattarin, 2001) becomes

$$h_e(t_i, \mathbf{x}_i; \vartheta, \alpha, \boldsymbol{\beta}) = \frac{\alpha t_i^{\alpha-1}}{t_i^\alpha + \vartheta^\alpha \exp(-\mathbf{x}\boldsymbol{\beta})}. \quad (5)$$

The inclusion of unobserved heterogeneity, according to the previous procedure, generates a distribution that is more flexible than the Weibull because it has a hazard with a non-monotonic trend: it is equal to 0 for  $t_i$ , increases to a maximum, then decreases and  $h_e(t_i, \mathbf{x}_i) \rightarrow 0$  for  $t_i \rightarrow \infty$ . The result seems to be satisfactory because the distribution has a flexible and attractive hazard shape, but it should be noted that the choice of the Weibull is arbitrary and the mean and variance are not defined for some values of  $\alpha$ .

### 3.1. Telescoping effect

The measurement of unemployment duration for the  $i$ -th individual,  $t_i$ , is strictly based on his/her capacity to evaluate exactly the time interval spent seeking job or to remember the dates determining that spell. However, memory fades and becomes imprecise over time, generating two kinds of errors. One is leaving out an episode: he/she forgets a short period of employment. Another is expansion/contraction of time (telescoping), where an episode is remembered as occurring later or more recently than it actually did. The telescoping effect for unemployment spells would generate pronounced spikes on their empirical distribution (*heaping effect*), with respect to the expected smoothness of the frequency polygon. In fact, the true unobserved spell length of the  $i$ -th individual,  $t_i$ , could have been approximated to a preferred value because it is easier to

communicate,  $t_{Hij}$ , such as a quarter, semester, year and their multiples (Sudman and Bradburn, 1973; Sikkel, 1985), *i.e.*, a sort of calendar effect.

The location of the spikes (*heaped values*) is a matter of empirical evidence. Let  $J$  be the number of heaped values and let  $h_1 < h_2 < \dots < h_J$  be their corresponding observed abscissas (one for each spike), respectively, sorted in ascending order. Let  $y_i$  be a binary variable:  $y_i = 1$  with a probability of  $H(t_i; \gamma)$  for the observed spell length coinciding with a heaped value; otherwise  $y_i = 0$  with a probability of  $[1 - H(t_i; \gamma)]$ . Therefore,  $H(t_i; \gamma)$  is the *heaping function* with a vector of parameters  $\gamma$ , denoting the probability of having detected a spell length,  $t_i$ , arising from the telescoping effect. A possible model for the stochastic heaping processes becomes  $t_{Hij} = t_i + \delta_{ij} y_i$ , where  $\delta_{ij} = h_j - t_i$  is such that  $|h_j - t_i|$  represents the minimum for  $j = 1, 2, \dots, J$  (Torelli and Trivellato, 1993). The exponential distribution,  $H(t_i; \gamma) = 1 - \exp(-\gamma t_i)$ , is the simplest and most practical assumption, although it may depend on individual characteristics,  $\mathbf{x}_i$ , which were not considered here in order to avoid over-parameterisation.

The binary variable  $y_i$  was defined for each type of spell:  $y_{A,i}$  for  $T_{A,i}$  and  $y_{R,i}$  for  $T_{R,i}$ . Therefore, two sets of heaped values will be obtained. Let only  $T_{A,i}$  be considered. The abscissas of heaped values,  $h_{A,1} < h_{A,2} < \dots < h_{A,J}$ , were determined from the frequency distribution of  $t_{A,i}$  (Fig. 2) and  $T_{R,i}$  (Fig. 3). Now, it is possible to identify an interval for each  $t_{A,i} = h_{A,j}$ , considering two adjacent points  $h_{A,j-1}$  and  $h_{A,j+1}$ . The lower bound is  $t_{A,HLij} = (h_{A,j-1} + h_{A,j})/2$ , and the upper bound is  $t_{A,HUij} = (h_{A,j} + h_{A,j+1})/2$ . Moreover, in general, a spell may be still in progress. The binary variable  $c_i$  could represent censored spells: it is equal to 1 if the observed unemployment spell  $t_i$  is complete and 0 otherwise. Therefore, two dummies are needed for the two types of spells, respectively  $c_{A,i}$  for  $T_{A,i}$  and  $c_{R,i}$  for  $T_{R,i}$ . For the  $i$ -th individual, the available data set is given by  $\{t_{A,i}, c_{A,i}, y_{A,i}, t_{A,HLij}, t_{A,HUij}, t_{R,i}, c_{R,i}, y_{R,i}, t_{R,HLij}, t_{R,HUij}, \mathbf{x}_i\}$ , where  $t_{\bullet,HLij}$  and  $t_{\bullet,HUij}$  assume their corresponding values only when  $y_{\bullet,i}$  is equal to 1 or 0 otherwise.

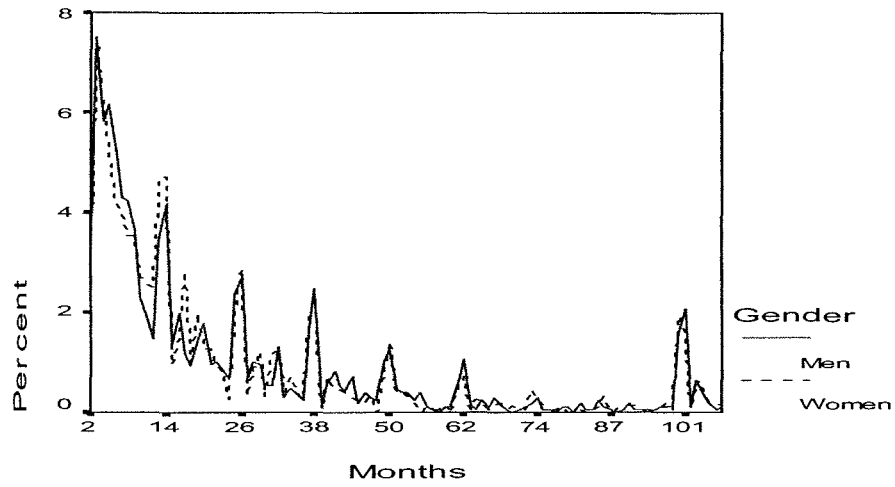


Fig. 2 – Percentage distributions of spell answers,  $T_{A,i}$ , for men and women (1997:4-1999:1).

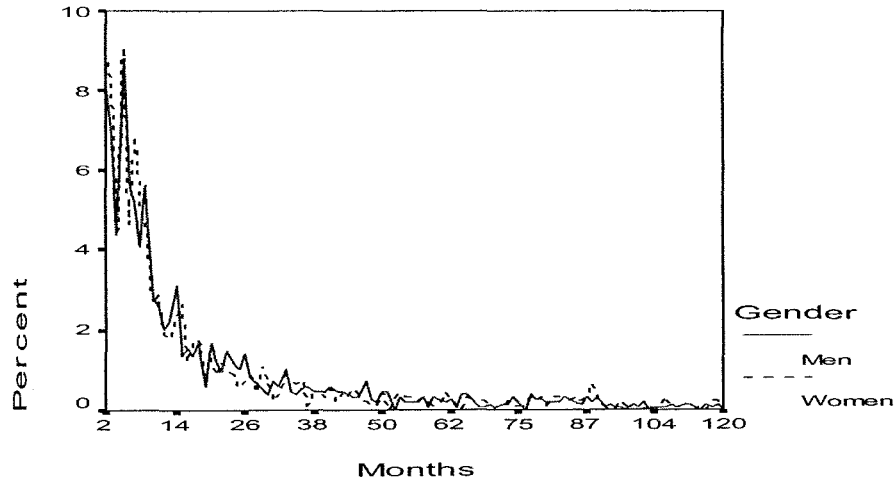


Fig. 3 – Percentage distributions of spell reconstructions,  $T_{R,i}$ , for men and women (1997:4-1999:1).

The empirical percentage distribution of  $T_{A,i}$  shows many spikes, but their abscissas  $\{3, 5, 13, 14, 19, 20, 25, 26, \dots\}$  are not immediately interpretable in ordinary calendar time (Fig. 2), as their end points were calculated with a certain precision. On the contrary, the distribution of  $u_{ISU}$ , collected through Q46 and not reported here, showed more marked and recognizable abscissas values as years or submultiples like quarters and semesters:  $\{3, 6, 12, 15, 18, 24, 36, 48, \dots\}$ . The empirical percentage distribution of  $T_{R,i}$  in Fig. 3 shows few marked spikes, as the dates are not subject to the calendar effect on the part of respondents. Therefore, the distribution of  $T_{R,i}$  is smoother than that of  $T_{A,i}$ , except in some points:  $\{4, 8, 14, \dots\}$ .

### 3.2. Mixture models and parameter estimations

Let  $T_i$  be the unobserved completed spell of the  $i$ -th individual, considered as a random variable. The values of  $T_i$  concern the observation of the random variables  $T_{A,i}$  and  $T_{R,i}$ , *i.e.*, spell answers and spell reconstructions, respectively. Therefore, the distribution of  $T_i$  could be expressed by a mixture distribution of  $T_{A,i}$  and  $T_{R,i}$ :

$$f(t_i, \mathbf{x}_i; \boldsymbol{\theta}, \boldsymbol{\beta}) = \pi \psi_A(t_{A,i}, \mathbf{x}_i; \boldsymbol{\theta}, \boldsymbol{\beta}) + (1 - \pi) \psi_R(t_{R,i}, \mathbf{x}_i; \boldsymbol{\theta}, \boldsymbol{\beta}), \quad (6)$$

where  $\pi$  is the weight of the linear combination of the two distribution functions,  $\psi_A(t_{A,i}, \mathbf{x}_i; \boldsymbol{\theta}, \boldsymbol{\beta})$  and  $\psi_R(t_{R,i}, \mathbf{x}_i; \boldsymbol{\theta}, \boldsymbol{\beta})$  expressed in equation (4), for  $T_{A,i}$  and  $T_{R,i}$ , respectively. The general form of the functions in the linear combination would include the heaping effect and the right-censored spells, which are most frequent in duration data. As an example, for the random variable  $T_{A,i}$ , the density function is

$$\begin{aligned} \psi_A^*(\cdot) = & \left\{ \left[ \psi_A(t_{A,i}, \mathbf{x}_i; \boldsymbol{\theta}, \boldsymbol{\beta}) \right]^{c_i} \left[ S_A(t_{A,i}, \mathbf{x}_i; \boldsymbol{\theta}, \boldsymbol{\beta}) \right]^{1-c_i} \left[ 1 - H_A(t_{A,i}; \gamma) \right] \right\}^{y_i} \\ & \times \left\{ \left[ \psi_A(t_{A,i}, \mathbf{x}_i; \boldsymbol{\theta}, \boldsymbol{\beta}) \right]^{c_i} \left[ S_A(t_{A,i}, \mathbf{x}_i; \boldsymbol{\theta}, \boldsymbol{\beta}) \right]^{1-c_i} \left[ 1 - H_A(t_{A,i}; \gamma) \right]^{c_i} \right. \\ & \left. + \int_{t_{HLj}}^{t_{Hvj}} \left[ \psi_A(v, \mathbf{x}_i; \boldsymbol{\theta}, \boldsymbol{\beta}) \right]^{c_i} \left[ S_A(v, \mathbf{x}_i; \boldsymbol{\theta}, \boldsymbol{\beta}) \right]^{1-c_i} \left[ H_A(v; \gamma) \right] dv \right\}^{1-y_i}, \end{aligned} \quad (7)$$

where  $S_A(\cdot)$  is the corresponding survivor function,  $H_A(\cdot)$  is the heaping function,  $y_i$  is the binary variable denoting whether  $t_i = h_j$ , and  $c_i$  is again a binary variable denoting whether the observed spell is a completed spell. An explanation of this expression can be found in Lalla and Pattarin (2001).

The transitions considered in the following only generate completed spells and  $c_i$  is always equal to 1. If the heaping effect is not considered, the log-likelihood function is then given by

$$\begin{aligned} \log L(\pi, \mathcal{G}, \alpha, \boldsymbol{\beta}) = & n \log(\alpha) + n \alpha \log(\mathcal{G}) - \sum_{i=1}^n \left( \sum_{j=1}^m X_{ij} \beta_j \right) \\ & + \sum_{i=1}^n \log \left[ \pi \tilde{\psi}(t_{R,i}, \mathbf{x}_i; \mathcal{G}, \boldsymbol{\beta}) + (1-\pi) \tilde{\psi}(t_{A,i}, \mathbf{x}_i; \mathcal{G}, \boldsymbol{\beta}) \right]. \end{aligned} \quad (8)$$

where  $n$  is the total number of observations,  $m$  is the total number of covariates,  $\tilde{\psi}(\cdot)$  is the density function of  $T_i$  (which could be  $T_{A,i}$  or  $T_{R,i}$ ),  $\alpha$  is the shape parameter,  $\theta$  is the location parameter, and  $\boldsymbol{\beta}$  is the usual vector of coefficients for the covariates. The density functions  $\tilde{\psi}(\cdot)$  are derived from equation (4) and assume the form

$$\tilde{\psi}(t_i, \mathbf{x}_i; \mathcal{G}, \alpha, \boldsymbol{\beta}) = \frac{t_i^{\alpha-1}}{\left[ t_i^\alpha + \mathcal{G}^\alpha \exp\left(-\sum_{j=1}^m X_{ij} \beta_j\right) \right]^2}. \quad (9)$$

Inclusion of the heaping effect highly complicates the expression of  $\tilde{\psi}(\cdot)$ , as can be deduced from equation (7).

#### 4. Differential Evolution: some background information

Evolutionary algorithms are stochastic search heuristic algorithms. They can deal with complex optimisation problems. An evolutionary algorithm starts by randomly generating a population of individuals, which encode feasible candidate solutions to the optimisation problem under investigation. Each individual is the mathematical encoding of one candidate solution to the optimisation problem under investigation. A fitness function, which measures the goodness of a candidate solution, is then computed for each individual in the population. The population is then altered, by iteratively applying some mathematical operators. This iterative process is usually defined as the evolution of the population through generations. For each generation some mathematical



operators, namely selection, recombination and mutation, are applied to the individuals of the current population in order to determine the composition of the population of the next generation. Such operators aim to determine candidate solutions with a better fitness value by exploring the search space. The population is evolved through different generations until the algorithm converges to a satisfying solution or the maximum number of iterations is reached. The fittest individual in the final population then encodes the optimal solution to the problem under investigation.

Genetic algorithms (Holland, 1975) are probably the most well-known evolutionary algorithms, even outside the heuristic community. They have been successful in tackling optimisation problems in different fields, such as statistics, engineering, and bioinformatics. Recently, many empirical investigations have shown that Differential Evolution (DE), a relatively unknown approach to numerical optimization (Storn and Price, 1995), has a superior performance compared to other optimisation and evolutionary algorithms. DE is very simple to implement and requires little or no parameter tuning.

DE starts by randomly generating an initial population ( $P_{Gen}$ ) of  $N$  strings  $x_i$  ( $i=1, \dots, N$ ), which are the individuals in the population. Each individual (chromosome) consists of a string of  $D$  real-value cells (genes), which encodes a candidate solution (genome) to the optimisation problem under investigation. After random initialisation and fitness evaluation, the population is then evolved through generations ( $Gen=1, \dots, G_{max}$ ). In each generation, mutation, recombination and selection operators are applied to the individuals. In every generation, for each individual  $i$ , we choose three other individuals  $k$ ,  $l$ , and  $m$  randomly from the population (with  $j \neq k \neq l \neq m$ ), calculate the difference of the individual in  $k$  and  $l$ , scale it by multiplication with a parameter  $F$  and create an offspring by adding the result to the chromosome of  $m$ . However, the entire individual of the offspring is not created in this way, but genes are partly inherited from individual  $i$ . The proportion of genes that are also partly inherited is determined by the so-called crossover probability ( $CR$ ), which determines how many genes of the difference vector are copied on the average in the offspring. More precisely, the operator iteratively copies consecutive genes (from a random starting point and continuing on with the first gene after the last gene has past) of the difference vector in the offspring until  $U(0,1) \geq CR$ . If the offspring  $o$  is better than the parent  $i$ , then  $i$  is substituted by  $o$ .

The process is repeated for a fixed number of iterations and the optimization result is the best recorded candidate solution and fitness value at the end of the run. Different stopping criteria can be used. Table 4 reports the pseudo-code of the differential evolution (DE) algorithm.

#### 4.1. Differential evolution encoding for the unemployment spells mixture

The DE algorithm could be useful in estimating the parameters of the mixture distribution of the unemployment spells when the spell reconstructions ( $T_{R,i}$ ) and spell answers ( $T_{A,i}$ ) are considered jointly in a mixture model. The aim is to determine the parameters that maximise the likelihood function of the mixture model or minimise the negative of the log-likelihood function (see equation 8)

The analysis was performed considering 2380 individuals, from a sample with no missing values, collected by ISTAT, considering only the transitions from the unemployment to the employment state (see Table 3). For each person in the sample,  $m=45$  covariates were considered. As Fig. 4 shows, each DE individual encodes the following parameters: the mixture weight  $\pi$ , the shape parameter  $\alpha$ , the location parameter  $\mathcal{G}$ , and the 45 coefficients of the covariates  $(\beta_1, \dots, \beta_m)$ , where  $m=nvar$ . The DE explores to determine the parameters that minimise the following fitness function, which corresponds to the log-likelihood of the model described by (8) and (9)

$$fitness = -\log L(\pi, \mathcal{G}, \alpha, \beta). \quad (10)$$

DE requires a priori setting of the search space domain and some evolutionary parameters. After some preliminary analyses, we set the population size at 147 (NIND=3\*No. of parameters to be estimated), the maximum number of generations  $G_{Max}$  at 4000, the crossover rate at 0.5 (CR), and the DE-step size at 0.8 (F). Moreover, the search space was constrained so that the mixture weight  $\pi$  can vary in  $[0,1]$ , the shape parameter  $\alpha$  in  $[0,4]$ , the location parameter  $\mathcal{G}$  in  $[0,8]$ , and the 45 beta parameters  $(\beta_1, \dots, \beta_m)$  in  $[-2, 2]$ . During the simulations, a parameter was set to the closest domain boundary in case it proved to be equal to a value outside the domain search space. Future investigation will consider a larger search space.

**Table 4**  
Pseudo-code of the DE algorithm

---

```

void differential_evolution()
{
    initialize();
    evaluate();
    While (Gen < Gmax; Gen++) {
        for (i=1; i < NIND; NIND++) {
            for (j=1; j < D; D++) {
                MutateandRecombine();
            }
            select();
            evaluate();
        }
    }
}

```

---

```

Void MutateandRecombine() {

$$o.gene_j = \begin{cases} m.gene_j + F \cdot (k.gene_j - l.gene_j) & \text{if } U(0,1) < CR \\ i.gene_j & \text{otherwise} \end{cases}$$

}

```

---

```

Void select() {
    If fitness(offspring) > fitness(parent), choose offspring;
    Otherwise, choose parent;
}

```

---

## 5. Results of the estimation parameters

The data set was restricted solely to transitions from unemployment to employment, considering only job losers/leavers. The averages of the two durations,  $t_{A;i}$  and  $t_{R;i}$ , were almost the same (see Table 5), but values of  $t_{R;i}$  greater than 120 months were eliminated (see §2). In any case, this indicates that the two durations were consistent, on the average, while the mean of their minimums showed a reduction of five months. The means of  $t_{A;i}$  and  $t_{R;i}$  were somewhat higher than those obtained by Favro-Paris et al. (1996), while the mean of  $\min(t_{A;i}; t_{R;i})$  was slightly lower than their value. Only  $t_{R;i}$  proved to have missing values for the unemployed and they amounted to 206 cases. To avoid the elimination of these statistical units, the missing values of  $t_{R;i}$  were replaced with the corresponding available value of  $t_{A;i}$ , given that their means were almost the same.

The descriptive statistics of the main variables used to model unemployment durations are reported in Table 5, grouped by personal, family, individual job-search, local job-search, previous job, and current job characteristics. The explanatory variables were selected using two main criteria, although they admittedly remain arbitrary. The first used the backward method and maximisation of the partial likelihood estimates for removal, in Cox's semi-parametric proportional hazard model for  $t_{A;i}$ , for  $t_{R;i}$ , and for their minimum. The final set was obtained by matching the three outcomes. The second used both personal judgements and the main findings in the literature to select covariates from among those that did not enter the models.

The personal characteristics included gender, age, and education. The proportion of women involved in these types of transitions was only 40.5%, suggesting discrimination (and segregation) in the labour market. In fact, the number of unemployed women was generally greater than that of men, but only a lower proportion of them proved to have found employment and many of them passed into the out-of-the-labour-force state. Age was calculated at the beginning of unemployment and expressed in decades to reduce its value with respect to the dummies. It was introduced in the models as a polynomial of the second order to account for the different behaviours of individuals in different life phases. The level of education did not reveal a significant impact on the transition from unemployment to the employment state and it was not included in the model, for the sake of brevity, even if in other studies, they have sometimes yielded coefficients significantly different from zero (see, *inter alia*, Røed and Nordberg, 2003; Böheim and Taylor, 2002).

**Table 5**

Acronym (Acr.), Mean, Standard Deviation (SD), Range, and number of cases ( $n$ ) –or 1 when the variables is binary (0/1)– for the main variables in the models

Variable	Acr.	Unemployed		Range	$n$ or no. of 1
		Mean	SD		
Spell Answers, $t_{A,i}$ (months)		19.760	22.889	1.9–107	2585
Spell Reconstructions, $t_{R,i}$ (months)		19.352	22.952	1.5–119	2379
Min( $t_{A,i}; t_{R,i}$ ) – months		15.174	17.770	1.5–107	2585
<i>Personal characteristics</i>					
Women	W	0.405	0.491	0/1	1046
Age (in decades)	A	3.276	1.069	1.1–8.0	2585
High School ( <i>Diploma</i> )	HS	0.251	0.433	0/1	648
College Level ( <i>Laurea</i> )	CL	0.056	0.229	0/1	144
<i>Family characteristics</i>					
Never Married	NMarr.	0.471	0.499	0/1	1217
Married	Marr.	0.489	0.500	0/1	1264
Separated, Divorced, Widowed	SDW	0.040	0.197	0/1	104
Child (compared to the head of family)	Child	0.418	0.493	0/1	1081
Number of Family Components	NFC	3.637	1.300	1–12	2585
Employment Ratio in the Family	ERF	0.191	0.204	0–0.75	2585
<i>Individual job-search characteristics</i>					
Short-Term Contract	STC	0.041	0.197	0/1	105
Part-Time Work	PTW	0.102	0.303	0/1	264
Any Time	AT	0.236	0.425	0/1	610
Not Willing to Commute	NWC	0.331	0.471	0/1	856
Willing to Commute	WC	0.459	0.498	0/1	1187
Any Location	AL	0.210	0.407	0/1	542
Conditional Availability to Work	CAW	0.621	0.485	0/1	1604
Number of Job Search Attempts	JSA	1.974	1.365	0–10	2585
Reservation Wage	RW	1.694	1.589	1–31.5	2585
Registered with Employment Agency	REA	0.832	0.374	0/1	2150
Benefits	Bnft	0.164	0.370	0/1	424
<i>Local job-search characteristics</i>					
Provincial Unemployment Rate	PUR	15.028	8.724	2.2–34.4	2585
North-East (4, 5, 6)	NE	0.113	0.317	0/1	293
Centre: Emilia-Romagna	CE-ER	0.060	0.237	0/1	154
Centre (9, 10, 11)	CE	0.098	0.297	0/1	253
Latium	LZ	0.051	0.219	0/1	131
South-East (13, 14, 16)	SE	0.138	0.345	0/1	357
1st Quarter	D1Q	0.234	0.424	0/1	606
2nd Quarter	D2Q	0.289	0.453	0/1	747
3rd Quarter	D3Q	0.133	0.340	0/1	345
4th Quarter of previous year	D4Qpy	0.220	0.414	0/1	568

(continued on the next page)

Table 5 (continued)

Variable	Acr.	Unemployed Mean	SD	Range no. of 1	<i>n</i> or no. of 1
<i>Previous job characteristics</i>					
Dismissed from the Previous Job	DPJ	0.240	0.427	0/1	621
Left for Other Reasons	LOR	0.203	0.403	0/1	526
Agriculture Sector	AS1	0.123	0.329	0/1	318
Construction Sector	CS1	0.175	0.380	0/1	453
Trade Sector	TS1	0.220	0.414	0/1	569
Service Sector	SS1	0.101	0.302	0/1	262
Public Administration	PA1	0.115	0.319	0/1	297
<i>Current job characteristics</i>					
Working in a Different Region	WDR	0.474	0.499	0/1	1226
Forced Part-Time	FPT	0.147	0.354	0/1	380
Chosen Part-Time	CPT	0.063	0.242	0/1	162
Forced Temporary Employment	FTE	0.271	0.444	0/1	700
Chosen Temporary Employment	CTE	0.172	0.377	0/1	444
Owner Position	OP	0.042	0.201	0/1	109
Professional Man	PM	0.109	0.312	0/1	283
Coadjuvant Position	CP	0.026	0.160	0/1	68
Agriculture Sector	AS2	0.159	0.366	0/1	412
Construction Sector	CS2	0.168	0.374	0/1	435
Trade Sector	TS2	0.261	0.439	0/1	674
Service Sector	SS2	0.138	0.345	0/1	356
Public Administration	PA2	0.113	0.317	0/1	293

Family characteristics were limited to marital status, the «position» in the family, the number of family components, and the employment ratio in the family. Marital status was subdivided in three dummies: never married, married, and other (separated, divorced, widowed). The position in the family contains dummies distinguishing between head of family, spouse, child, and other. The employment ratio is the division of the number of employed by the number of family components, ranging from 0 to 1.

The individual job-search characteristics also included three covariates that were not significant. Conditional availability to work is a negative attitude with respect to unconditional availability, the latter being a preliminary condition to be classified as unemployed. The number of job search attempts represents an indicator of the intensity of the job-search, but a high value could denote some intrinsic problems of job seekers (Favro-Paris et al., 1996). The reservation wage is an important reference for job search theory (Lippman and McCall, 1976), but it has not proven to be significant in other studies (Lalla and Pattarin, 2001). However, it is known that answers regarding wages are generally missing and often unreliable, introducing a bias in the estimates.

The local job-search characteristics include the Provincial unemployment rate, which was constant over the period considered. This rate captures local differences without fulfilling them. Therefore, some dummies for the geographic areas of Italy were introduced in the model using the aggregations proposed by Attanasio and Padoa Schioppa (1991), with a small change in the definition of Centre where the region of Emilia-Romagna was introduced as a single area (see Table 5). Other dummies concern the temporal period (i.e., quarter) before finding a job: the reference dummy was the fourth quarter of 1998.

All the available previous job characteristics were included in the model and they proved to have a significant impact on the probability of leaving the unemployment state, while current job characteristics did not always yield coefficients significantly different from zero. In particular, the sectors proved to be significant only in the model based on  $t_{R,i}$ . However, the latter were included for completeness.

Table 6 reports the estimates of the parameters of the spell mixture models when 15 runs of DE were considered. In each run, the population was iteratively evolved for 4000 generations. Fig. 4 shows that (after 500 generations) the best fitness value in each generation decreased markedly at the beginning (0-500 generations) and then (after 500 generations) the fitness value of the best individual continued to decrease, but in a more stable manner. Four thousand generations can be acceptable even if a better solution to the optimisation problem is found when the number of generations increases.<sup>2</sup> Column 2 shows the «best» values of  $\beta$ , column 3 the mean values, and column 4 the standard error of the parameters for 15 runs. The other columns show, respectively, the value of  $\beta$ , its standard error, the relative p-value ( $p <$ ), and the corresponding estimates of the percentage of change in risk with each unit change in the covariate or  $\exp(\beta_i)$ , which can be interpreted as the relative risk when the covariate takes only the values of 0 and 1. Cox's model was based only on the spells given by  $\min(t_{A,i}, t_{R,i})$  and the parameters  $\lambda$  and  $\alpha$  were estimated through a nonlinear model of the empirical baseline cumulative hazard. The coefficient of determination for this post-hoc estimation was  $R^2 = 0.992$ .

The estimated value,  $\hat{\alpha}$ , of the shape parameter is particularly interesting because some labour market theories predict  $\hat{\alpha} < 1$ , implying negative state dependence (Salant, 1977), but the empirical results showed all possible values, i.e., either negative (Ham and Rea, 1987; Torelli and Trivellato, 1988; Lynch, 1989), or positive (Hujer and Sneider, 1989), or null (Flinn, 1986; Groot, 1990)

---

<sup>2</sup> All experiments were run using Windows XP on an IBM desktop PC. With the parameters described above, each DE simulation required 8h 26m. The estimation of the parameters in Cox's regression model was obtained through SPSS (1997).

state dependence, although the segment of the surveyed population was not always the same. The estimated shape,  $\hat{\alpha}$ , showed a value slightly, but significantly, lower than 1, which could depend on the noticeable heterogeneity not being captured completely by the selected covariates. The estimates of  $\mathcal{S}$  (or  $\lambda$ ) refer to the average spell length, as it is the scale parameter. The  $\hat{\beta}$  coefficient represents the predicted change for a unit increase in the predictor. Therefore, a positive value implies an increase in the probability (acceleration) of leaving the unemployment state with the  $\exp(\beta_i)$  being greater than 1, while a negative value entails a decrease in the probability (deceleration) of leaving the unemployment state with the  $\exp(\beta_i)$  being lower than 1.

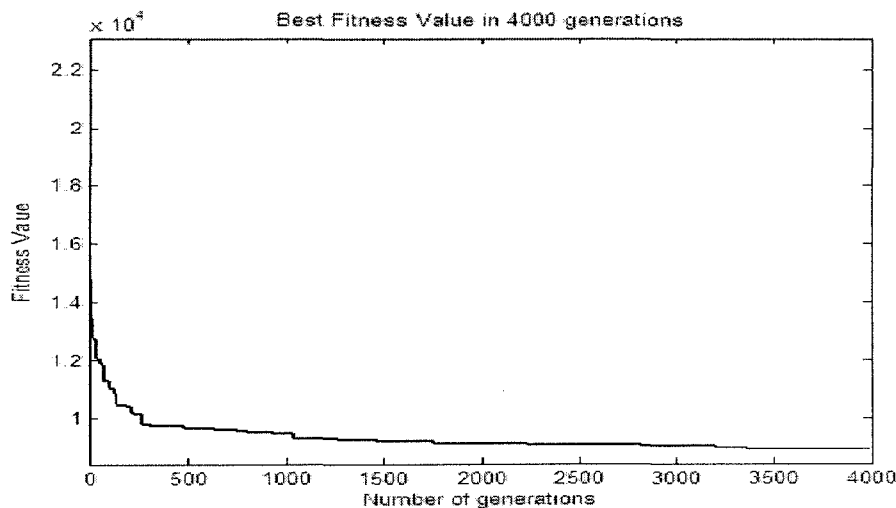


Fig. 4. Fitness value of the DE optimal solution in 4000 generations.

Of the personal and family characteristics, only the “child” covariate proved to have a positive coefficient  $\hat{\beta}$  statistically different from zero, implying a reduction of unemployment duration. Children looking for a job could be induced to accept an offer because either the family could be pressed for money or the employed in the family could represent an aid in finding a job, but a negative sign also has an interesting interpretation. Therefore, its sign is not univocally determined *a priori*.

Among the individual job-search characteristics, only the covariates REA and “Benefits” proved to be significant. The coefficient of REA was negative implying, surprisingly, people registered with employment agencies tend to increase their unemployment spells, although the registration would denote a



deliberate intention to find a job. A positive coefficient for benefits does not have a causal interpretation, as it could represent a spurious correlation with the omission of important firm-specific variables from the model (Røed and Nordberg, 2003). However, it is often argued that recipients should wait longer than those without benefits, but the empirical outcomes sometimes contradict one another (see, *inter alia*, Nickell, 1979b; Narendranathan et al., 1985). In this case, benefits tend to decrease unemployment duration.

The significant local job characteristics included the Provincial unemployment rate with an expected negative coefficient and the dummies for the North-East with an expected positive coefficient. The other dummies—Latium, the South-East, the second quarter, and the fourth quarter of the previous year—yielded negative coefficients. The second and the fourth quarters denote some seasonal effects on unemployment flows, as they indicate periods in which job offers are high for seasonal workers.

All the available previous job characteristics proved to be significant and the coefficients showed the expected signs. Dismissed workers and individuals belonging to the residual category of “leavers for other reasons” showed longer unemployment lengths than those of voluntary leavers. Workers in industry proved to have spells longer than those of workers in agriculture, construction, trade, services, and also even public administration. For agriculture, construction, and the trade sector it could depend on the presence of a large number of seasonal workers, while the service sector and public administration could denote the specificity of the current labour market in which industry tends to be less important in the dynamics of unemployment.

The selected current job characteristics were all significant, except the dummies for the sectors. Individuals accepting (forced or chosen) temporary employment showed an increase in the probability of leaving the unemployment state. Owner positions, professionals and coadiuvant positions yielded negative coefficients with respect to the other positions, such as clerical, low- and high-skilled workers.

Estimates of parameters, obtained through the DE algorithm, concerned the values of the “best”  $\hat{\beta}$  coefficients, i.e., the values of parameters generating the lowest value of the likelihood. Each run produces a set of values that is the best in that population. Therefore, the mean of the various “best values” of the same  $\hat{\beta}$  coefficient, obtained in the 15 runs, is also reported. Finally, the evaluation of the significance of the parameters required the calculation of the corresponding standard errors. The naïf procedure adopted estimated the standard error of each parameter using the standard deviation of the different best values obtained in the various runs. The results are reported in Table 6.

**Table 6**

Estimates of parameters of the mixture model for completed spells of unemployment obtained by the DE method —the “best”  $\beta$ , the mean of the  $\bar{\beta}$  s, and the relative standard error  $SE(\beta)$  — and for Cox’s proportional hazards model, using  $\min(t_{A,i}; t_{R,i})$

Variables	DE estimates			Cox’s proportional hazards model			
	<i>Best</i> $\beta$	$\bar{\beta}$	$SE(\beta)$	$\beta$	$SE(\beta)$	$p <$	$\exp(\beta)$
$\hat{\pi}$	**0,276	**0,267	0,053	—	—	—	
$\hat{\alpha}$	**2,133	**2,094	0,092	**0,886	0,001	0,001	
$\hat{\theta} / \hat{\lambda}$	**6,254	**6,472	1,752	**0,083	0,003	0,001	
$\gamma$	0,000	0,000	0,000				
W	0,514	-0,026	0,281	0,032	0,049	0,510	1,033
A/10	0,334	0,333	0,336	0,050	0,125	0,686	1,052
(A/10) <sup>2</sup>	-0,039	-0,028	0,050	0,009	0,016	0,597	1,009
Child	0,155	0,317	0,323	**0,196	0,056	0,000	1,217
NCF	0,089	0,096	0,097	*0,040	0,016	0,013	1,041
ERF	0,077	0,168	0,519	0,122	0,108	0,261	1,130
STC	-0,077	0,416	0,532	*0,217	0,104	0,037	1,242
PTW	-0,471	-0,285	0,335	-0,115	0,073	0,114	0,891
AT	-0,322	-0,126	0,239	-0,087	0,050	0,079	0,916
AL	*0,529	0,146	0,250	0,067	0,051	0,190	1,070
CAW	*0,441	0,107	0,215	0,043	0,044	0,330	1,044
JSA	*-0,160	-0,056	0,078	0,013	0,016	0,428	1,013
RW	0,031	-0,024	0,071	0,007	0,012	0,535	1,007
REA	*-0,706	*-0,604	0,267	**0,255	0,057	0,000	0,775
Bnft	*1,080	*0,848	0,397	**0,513	0,061	0,000	1,670
PUR	*-0,036	**0,051	0,020	**0,019	0,003	0,000	0,982
NE	0,635	0,282	0,405	*0,178	0,077	0,022	1,194
CE-ER	0,299	-0,034	0,517	0,099	0,094	0,290	1,104
CE	-0,321	-0,441	0,330	-0,101	0,076	0,186	0,904
LZ	**1,340	*-0,965	0,436	**0,449	0,096	0,000	0,639
SE	-0,158	-0,083	0,351	*-0,124	0,061	0,041	0,884
D1Q	**1,245	-0,592	0,421	-0,100	0,074	0,178	0,905
D2Q	**1,223	*-0,835	0,370	**0,244	0,075	0,001	0,784
D3Q	-0,005	0,153	0,471	0,074	0,079	0,349	1,077
D4Qpy	**1,304	**1,210	0,370	**0,371	0,086	0,000	0,690
DPJ	-0,329	-0,315	0,288	**0,182	0,053	0,001	0,834
LOR	-0,110	-0,367	0,286	*-0,139	0,056	0,013	0,870
AS1	**1,166	**1,357	0,492	**0,648	0,086	0,000	1,912
CS1	0,375	0,648	0,521	**0,338	0,078	0,000	1,403
TS1	*0,522	**0,722	0,279	**0,356	0,063	0,000	1,428
SS1	0,226	0,665	0,443	**0,383	0,077	0,000	1,467
PA1	**1,022	**1,222	0,422	**0,532	0,077	0,000	1,703

(continued on the next page)

**Table 6 (continued)**

Variables	DE estimates			Cox's regression model estimates			
	<i>Best</i> $\beta$	$\bar{\beta}$	SE( $\beta$ )	$\beta$	SE( $\beta$ )	$p <$	$e^{\bar{x}\beta}$
WDR	** -0,708	** -0,854	0,223	** -0,275	0,053	0,000	0,759
FPT	-0,193	-0,320	0,344	** -0,241	0,060	0,000	0,786
CPT	-0,563	-0,260	0,565	* -0,189	0,086	0,028	0,827
FTE	0,270	0,125	0,194	0,100	0,054	0,065	1,105
CTE	-0,049	0,245	0,353	* 0,155	0,060	0,010	1,168
OP	* -1,592	-0,669	0,708	* -0,256	0,110	0,020	0,774
PM	-0,533	-0,378	0,403	* -0,176	0,072	0,014	0,839
CP	-0,774	-0,690	0,663	** -0,477	0,131	0,000	0,621
AS2	-0,319	-0,351	0,403	-0,145	0,087	0,096	0,865
CS2	-0,497	-0,372	0,425	-0,107	0,085	0,210	0,899
TS2	-0,427	-0,380	0,297	-0,030	0,069	0,666	0,971
SS2	-0,514	-0,466	0,341	-0,118	0,078	0,130	0,888
PA2	-0,085	-0,492	0,473	-0,146	0,086	0,090	0,864
<b>-log(L)</b>	<b>8779.863</b>	<b>9825.392</b>					

<sup>bl</sup> Border-Line. \* Significant at the 5% level. \*\* Significant at the 1% level.

The DE algorithm yielded the estimates of all parameters in the model. The estimate of  $\pi$  indicated that  $t_{R,i}$  was heavier than  $t_{A,i}$ , while the estimate of  $\gamma$  proved to be negligible. It should be noted that the standard errors of the estimates were higher than those obtained by the partial maximum likelihood applied in estimating the parameters of the Cox's proportional hazards model (Cox, 1972). Therefore, the adopted procedure should be refined or the BHHH method (Greene, 1993) should be used, i.e., the outer product of the gradient which requires only the calculation of the first derivatives. Moreover, it is not useful to compare the different significance of parameters, as the latter depend on the value of their corresponding standard errors and the models are not exactly the same. However, only two significant covariates presented different signs: the short-term contract (STC) parameter, which was significant at the 5% level, and the parameter of chosen temporary employment (CTE) with borderline significance (6%).

## 6. Conclusions

This paper has examined unemployment durations in Italy detected in the period ranging from 1997:4 to 1999:1. Two measures were determined: spell answers and spell reconstructions. As is known, results obtained from unemployment spells analyses alone are generally ambiguous. In fact, conclusions concerning policy indications are not grounded upon a valid and

stable basis (Heckman and MaCurdy, 1992). However, the analysis of unemployment duration remains important for an approximate understanding of the pattern of relationships between covariates.

On the average, the spell reconstructions proved to be similar, to the spell answers, when the former were bounded within the same range as the latter. Therefore, the missing data for one type of measure could be (and were) replaced with the data of the other type.

The use of the mixture distribution to model unemployment spell lengths could constitute an alternative «data-based» strategy against the choice of the minimum between the two types of spells. The mixture parameter could be interpreted as the weight of one with respect to the other, but it tends to increase the average length of the spells.

The DE method proved to be a valuable alternative to classical methods, although it is computationally expensive and convergence can be slow. However, it appears to be very useful in dealing with the complex log-likelihood function because the optimisation problem is then NP-hard and classical methods cannot provide a solution. In fact, the latter require the determination of the first (and sometimes also the second) derivatives, a low number of covariates, and a rather simple type of function. On the contrary, although an unsolved problem still remains concerning the calculation of the standard errors and the procedure used above requires further refinements, the limitations of the other methods are not present in the DE method.

### **Acknowledgements**

The work reported here was partially supported by a grant from the Italian Ministry for Education, University and Research (MIUR) for the project, «Industrial Districts as Complex Systems», approved in 2002 (prot. 2002133972) and directed by David Avra Lane. Partial financial support was also provided by the Italian MIUR for the project «Dynamics and inertia in the Italian labour market: databases, measurement and modelling issues», coordinated by Ugo Trivellato. Individual anonymous data, elicited from the Italian Labour Force Survey, were kindly provided by Istat (the Italian national statistical agency), under a research agreement with the Department of Statistics of the University of Padua.

## References

- Amemiya, T., 1985. *Advanced Econometrics*. Harvard University Press, Cambridge (MA).
- Attanasio, O.P., Padoa Schioppa, F., 1991. Regional Inequalities, Migration and Mismatch in Italy, 1960-86. In: Padoa Schioppa, F. (Ed.), *Mismatch and labour mobility*. Cambridge University Press, Cambridge, pp. 237-320.
- Blossfeld, H.-P., Hamerle, A., 1992. Unobserved heterogeneity in event history models. *Quality & Quantity* 26, 157-168.
- Böheim, R., Taylor, M.P., 2002. The search for success: do the unemployed find stable employment?, *Labour Economics* 9, 717-735.
- Commission Regulation (EC) No. 1897/2000 of 7 September 2000. Implementing Council Regulation (EC) No. 577/98 on the organisation of a labour force sample survey in the Community concerning the operational definition of unemployment, *Official Journal of the European Communities*, L228, Vol. 43, 8 September 2000, pp. 18-21.
- Cox, D.R. 1972. Regression Models and Life Tables. *Journal of the Royal Statistical Society B* 34, 187-220.
- Cox, D.R., Oakes, D., 1984. *Analysis of Survival Data*. Chapman and Hall, London.
- Duncan, G.J., Kalton, G., 1987. Issues of Design and Analysis of Surveys Across Time. *International Statistical Review* 55 (1), 97-117.
- EUROSTAT, 1996. *The European Union Labour Force Survey – Methods and Definitions*. EUROSTAT, Luxembourg.
- EUROSTAT, 2002. *European Social Statistics – Labour Force Survey Results 2002*. EUROSTAT, Luxembourg.
- Favro-Paris, M.M., Gennari, P., Oneto, G.P., 1996. La durata della disoccupazione in Italia: un'applicazione della struttura longitudinale dell'indagine sulle forze di lavoro. ISTAT, Quaderni di Ricerca, nuova serie 4: 1-79.
- Flinn, J.C., 1986. Econometric Analysis of CPS-Type Unemployment Data. *The Journal of Human Resources* XXI, 456-484.
- Greene, W.H. (1993). *Econometric Analysis*, 3rd edition. Macmillan, New York.
- Groot, W., 1990. The Effects of Benefits and Duration Dependence on Re-Employment Probabilities. *Economics Letters* 32 (4), 371-376.
- Ham, J.C., Rea, S.A. Jr., 1987. Unemployment Insurance and Male Unemployment Duration in Canada. *Journal of Labour Economics* 5 (3), 325-353.
- Heckman, J.J., 1981. Heterogeneity and State Dependence. In: Sherwin Rosen (Ed.), *Studies in Labor Markets*. University of Chicago Press, Chicago, pp. 91-139.
- Heckman, J.J., 1991. Identifying the Hand of Paste: Distinguishing State Dependence from Heterogeneity. *The American Economic Review* 81 (2), 75-79.
- Heckman, J.J., Singer, B., 1982. The identification problem in econometric models for duration data. In: Hilderbrand, W. (Ed.), *Advances in Econometrics*. Cambridge University Press, Cambridge, pp. 39-77.
- Heckman, J.J., Singer, B., 1984a. Econometric Duration Analysis. *Journal of Econometrics* 24, 63-132.

- Heckman, J.J., Singer, B., 1984b. A Method for Minimizing the Impact of Distributional Assumptions in Econometric Models for Duration Data. *Econometrica* 52, 271–320.
- Heckman, J.J., MaCurdy, T., 1992. Empirical Tests of Labor Market Equilibrium: An Evaluation. In: Darity, W. Jr. (Ed.), *Labor Economics: Problems in Analyzing Labor Markets*. Kluwer Academic, Dordrecht, pp. 117–139.
- Holland, J.H., 1975. *Adaptation in Natural and Artificial Systems*, University of Michigan Press, Ann Harbor.
- Hujer, R., Schneider, H., 1989. The Analysis of Labor Market Mobility Using Panel Data. *European Economic Review* 33 (2/3), 530–536.
- Kalbfleisch, J.D., Prentice, R.L., 1980. *The Statistical Analysis of Failure Time Data*. John Wiley & Sons, New York.
- Kiefer, N.M., 1988. Economic Duration Data and Hazard Functions. *Journal of Economic Literature* XXVI, 646–679.
- Kiefer, N.M., Lundberg, S.J., Neumann, G.R., 1985. How Long Is a Spell of Unemployment? Illusions and Biases in the Use of CPS Data. *Journal of Business & Economic Statistics* 3 (2), 118–128.
- Kleinbaum, D.G., 1996. *Survival Analysis: A Self-Learning Text*. Springer, New York.
- Lalla, M., Pattarin, F., 2001. Unemployment Duration: An Analysis of Incomplete, Completed, and Multiple Spells in Emilia-Romagna. *Quality & Quantity* 35: 203–230.
- Lancaster, T. 1979. Econometric Methods for the Duration of Unemployment. *Econometrica* 47, 939–956.
- Lancaster, T., 1990. *The Econometric Analysis of Transition Data*. Cambridge University Press, New York.
- Lee, E.T., 1993. *Statistical Methods for Survival Data Analysis*, 2nd edition. Wiley & Sons, New York.
- Lippman, S.A., McCall, J.J., 1976, The Economics of Job Search: A Survey, *Economic Inquiry* XIV, 155-189.
- Lynch, L., 1989. The Youth Labour Market in the Eighties: Determinants of Re-Employment Probabilities for Young Men and Women. *The Review of Economics and Statistics* 71 (1), 37–45.
- Narendranathan, W., Nickell, S., Stern, J., 1985. Unemployment Benefits Revisited. *The Economic Journal* 95: 307–329.
- Narendranathan, W., Stewart, M.B., 1993. Modelling the Probability of Leaving Unemployment: Competing Risks Models with Flexible Base-line Hazards. *Journal of the Royal Statistical Society, Series C* 42, 63–83.
- Nickell, S., 1979a. Estimating the Probability of Leaving Unemployment. *Econometrica* 47, 1249–1266.
- Nickell, S., 1979b. The Effect of Unemployment and Related Benefits on the Duration of Unemployment. *Economic Journal* 89, 34–49.
- Røed, K., Nordberg, M., 2003. Temporary layoffs and the duration of unemployment. *Labour Economics* 10, 381–398.
- Salant, S.W., 1977. Search Theory and Duration Data: a Theory of Sorts. *Quarterly Journal of Economic* 91, 39–57.

- Sikkel, D., 1985. Models for Memory Effects. *Journal of the American Statistical Association* 80, 835–841.
- Silcock, H., 1954. The Phenomenon of Labour Turnover. *Journal of the Royal Statistical Society, Series A CXVII*, 429–440.
- SPSS 1997. SPSS® *Advanced Statistics 7.5*, SPSS, Chicago.
- Storn, R., Price, K., 1995. Differential Evolution – a Simple and Efficient Adaptive Scheme for Global Optimization over Continuous Spaces, Technical Report TR-95-012, ICSI.
- Sudman, S., Bradburn, N. M., 1973. Effects of Time and Memory Factors on Response in Surveys. *Journal of the American Statistical Association* 68, 805–815.
- Torelli, N., Trivellato, U., 1988. Modelling Job-Search Duration from the Italian Labour Force Data. *LABOUR* 2(1), 117–134.
- Torelli, N., Trivellato, U., 1993. Modelling Inaccuracies in Job-Search Duration Data. *Journal of Econometrics* 59, 187–211.





1. Maria Cristina Marcuzzo [1985] "Joan Violet Robinson (1903-1983)", pp. 134
2. Sergio Lugaesi [1986] "Le imposte nelle teorie del sovrappiù", pp. 26
3. Massimo D'Angelillo e Leonardo Paggi [1986] "PCI e socialdemocrazie europee. Quale riformismo?", pp. 158
4. Gian Paolo Caselli e Gabriele Pastrello [1986] "Un suggerimento hobsoniano su terziario ed occupazione: il caso degli Stati Uniti 1960/1983", pp. 52
5. Paolo Bosi e Paolo Silvestri [1986] "La distribuzione per aree disciplinari dei fondi destinati ai Dipartimenti, Istituti e Centri dell'Università di Modena: una proposta di riforma", pp. 25
6. Marco Lippi [1986] "Aggregation and Dynamics in One-Equation Econometric Models", pp. 64
7. Paolo Silvestri [1986] "Le tasse scolastiche e universitarie nella Legge Finanziaria 1986", pp. 41
8. Mario Forni [1986] "Storie familiari e storie di proprietà. Itinerari sociali nell'agricoltura italiana del dopoguerra", pp. 165
9. Sergio Paba [1986] "Gruppi strategici e concentrazione nell'industria europea degli elettrodomestici bianchi", pp. 56
10. Nerio Naldi [1986] "L'efficienza marginale del capitale nel breve periodo", pp. 54
11. Fernando Vianello [1986] "Labour Theory of Value", pp. 31
12. Piero Ganugi [1986] "Risparmio forzato e politica monetaria negli economisti italiani tra le due guerre", pp. 40
13. Maria Cristina Marcuzzo e Annalisa Rosselli [1986] "The Theory of the Gold Standard and Ricardo's Standard Commodity", pp. 30
14. Giovanni Solinas [1986] "Mercati del lavoro locali e carriere di lavoro giovanili", pp. 66
15. Giovanni Bonifati [1986] "Saggio dell'interesse e domanda effettiva. Osservazioni sul cap. 17 della General Theory", pp. 42
16. Marina Murat [1986] "Between old and new classical macroeconomics: notes on Leijonhufvud's notion of full information equilibrium", pp. 20
17. Sebastiano Brusco e Giovanni Solinas [1986] "Mobilità occupazionale e disoccupazione in Emilia Romagna", pp. 48
18. Mario Forni [1986] "Aggregazione ed esogeneità", pp. 13
19. Sergio Lugaesi [1987] "Redistribuzione del reddito, consumi e occupazione", pp. 17
20. Fiorenzo Sperotto [1987] "L'immagine neopopulista di mercato debole nel primo dibattito sovietico sulla pianificazione", pp. 34
21. M. Cecilia Guerra [1987] "Benefici tributari nel regime misto per i dividendi proposto dalla commissione Sarcinelli: una nota critica", pp. 9
22. Leonardo Paggi [1987] "Contemporary Europe and Modern America: Theories of Modernity in Comparative Perspective", pp. 38
23. Fernando Vianello [1987] "A Critique of Professor Goodwin's 'Critique of Sraffa'", pp. 12
24. Fernando Vianello [1987] "Effective Demand and the Rate of Profits. Some Thoughts on Marx, Kalecki and Sraffa", pp. 41
25. Anna Maria Sala [1987] "Banche e territorio. Approccio ad un tema geografico-economico", pp. 40
26. Enzo Mingione e Giovanni Mottura [1987] "Fattori di trasformazione e nuovi profili sociali nell'agricoltura italiana: qualche elemento di discussione", pp. 36
27. Giovanna Procacci [1988] "The State and Social Control in Italy During the First World War", pp. 18
28. Massimo Matteuzzi e Annamaria Simonazzi [1988] "Il debito pubblico", pp. 62
29. Maria Cristina Marcuzzo (a cura di) [1988] "Richard F. Kahn. A disciple of Keynes", pp. 118
30. Paolo Bosi [1988] "MICROMOD. Un modello dell'economia italiana per la didattica della politica fiscale", pp. 34
31. Paolo Bosi [1988] "Indicatori della politica fiscale. Una rassegna e un confronto con l'aiuto di MICROMOD", pp. 25
32. Giovanna Procacci [1988] "Protesta popolare e agitazioni operaie in Italia 1915-1918", pp. 45
33. Margherita Russo [1988] "Distretto Industriale e servizi. Uno studio dei trasporti nella produzione e nella vendita delle piastrelle", pp. 157
34. Margherita Russo [1988] "The effect of technical change on skill requirements: an empirical analysis", pp. 28
35. Carlo Grillenzoni [1988] "Identification, estimation of multivariate transfer functions", pp. 33
36. Nerio Naldi [1988] "'Keynes' concept of capital", pp. 40
37. Andrea Ginzburg [1988] "Locomotiva Italia?", pp. 30
38. Giovanni Mottura [1988] "La 'persistenza' secolare. Appunti su agricoltura contadina ed agricoltura familiare nelle società industriali", pp. 40
39. Giovanni Mottura [1988] "L'anticamera dell'esodo. I contadini italiani della 'restaurazione contrattuale' fascista alla riforma fondiaria", pp. 40
40. Leonardo Paggi [1988] "Americanismo e riformismo. La socialdemocrazia europea nell'economia mondiale aperta", pp. 120
41. Annamaria Simonazzi [1988] "Fenomeni di isteresi nella spiegazione degli alti tassi di interesse reale", pp. 44
42. Antonietta Bassetti [1989] "Analisi dell'andamento e della casualità della borsa valori", pp. 12
43. Giovanna Procacci [1989] "State coercion and worker solidarity in Italy (1915-1918): the moral and political content of social unrest", pp. 41
44. Carlo Alberto Magni [1989] "Reputazione e credibilità di una minaccia in un gioco bargaining", pp. 56
45. Giovanni Mottura [1989] "Agricoltura familiare e sistema agroalimentare in Italia", pp. 84
46. Mario Forni [1989] "Trend, Cycle and 'Fortuitous cancellation': a Note on a Paper by Nelson and Plosser", pp. 4
47. Paolo Bosi, Roberto Golinelli, Anna Stagni [1989] "Le origini del debito pubblico e il costo della stabilizzazione", pp. 26
48. Roberto Golinelli [1989] "Note sulla struttura e sull'impiego dei modelli macroeconomici", pp. 21
49. Marco Lippi [1989] "A Short Note on Cointegration and Aggregation", pp. 11
50. Gian Paolo Caselli e Gabriele Pastrello [1989] "The Linkage between Tertiary and Industrial Sector in the Italian Economy: 1951-1988. From an External Dependence to an International One", pp. 40
51. Gabriele Pastrello [1989] "François Quesnay: dal Tableau Zig-zag al Tableau Formule: una ricostruzione", pp. 48
52. Paolo Silvestri [1989] "Il bilancio dello stato", pp. 34
53. Tim Mason [1990] "Tre seminari di storia sociale contemporanea", pp. 26
54. Michele Lalla [1990] "The Aggregate Escape Rate Analysed through the Queueing Model", pp. 23
55. Paolo Silvestri [1990] "Sull'autonomia finanziaria dell'università", pp. 11
56. Paola Bertolini, Enrico Giovannetti [1990] "Uno studio di 'filiera' nell'agroindustria. Il caso del Parmigiano Reggiano", pp. 164

57. Paolo Bosi, Roberto Golinelli, Anna Stagni [1990] "Effetti macroeconomici, settoriali e distributivi dell'armonizzazione dell'IVA", pp. 24
58. Michele Lalla [1990] "Modelling Employment Spells from Emilia Labour Force Data", pp. 18
59. Andrea Ginzburg [1990] "Politica Nazionale e commercio internazionale", pp. 22
60. Andrea Giommi [1990] "La probabilità individuale di risposta nel trattamento dei dati mancanti", pp. 13
61. Gian Paolo Caselli e Gabriele Pastrello [1990] "The service sector in planned economies. Past experiences and future perspectives", pp. 32
62. Giovanni Solinas [1990] "Competenze, grandi industrie e distretti industriali. Il caso Magneti Marelli", pp. 23
63. Andrea Ginzburg [1990] "Debito pubblico, teorie monetarie e tradizione civica nell'Inghilterra del Settecento", pp. 30
64. Mario Forni [1990] "Incertezza, informazione e mercati assicurativi: una rassegna", pp. 37
65. Mario Forni [1990] "Misspecification in Dynamic Models", pp. 19
66. Gian Paolo Caselli e Gabriele Pastrello [1990] "Service Sector Growth in CPE's: An Unsolved Dilemma", pp. 28
67. Paola Bertolini [1990] "La situazione agro-alimentare nei paesi ad economia avanzata", pp. 20
68. Paola Bertolini [1990] "Sistema agro-alimentare in Emilia Romagna ed occupazione", pp. 65
69. Enrico Giovannetti [1990] "Efficienza ed innovazione: il modello "fondi e flussi" applicato ad una filiera agro-industriale", pp. 38
70. Margherita Russo [1990] "Cambiamento tecnico e distretto industriale: una verifica empirica", pp. 115
71. Margherita Russo [1990] "Distretti industriali in teoria e in pratica: una raccolta di saggi", pp. 119
72. Paolo Silvestri [1990] "La Legge Finanziaria. Voce dell'enciclopedia Europea Garzanti", pp. 8
73. Rita Paltrinieri [1990] "La popolazione italiana: problemi di oggi e di domani", pp. 57
74. Enrico Giovannetti [1990] "Illusioni ottiche negli andamenti delle grandezze distributive: la scala mobile e l'appiattimento delle retribuzioni in una ricerca", pp. 120
75. Enrico Giovannetti [1990] "Crisi e mercato del lavoro in un distretto industriale: il bacino delle ceramiche. Sez. I", pp. 150
76. Enrico Giovannetti [1990] "Crisi e mercato del lavoro in un distretto industriale: il bacino delle ceramiche. Sez. II", pp. 145
78. Antonietta Bassetti e Costanza Torricelli [1990] "Una riqualificazione dell'approccio bargaining alla selezione di portafoglio", pp. 4
77. Antonietta Bassetti e Costanza Torricelli [1990] "Il portafoglio ottimo come soluzione di un gioco bargaining", pp. 15
79. Mario Forni [1990] "Una nota sull'errore di aggregazione", pp. 6
80. Francesca Bergamini [1991] "Alcune considerazioni sulle soluzioni di un gioco bargaining", pp. 21
81. Michele Grillo e Michele Polo [1991] "Political Exchange and the allocation of surplus: a Model of Two-party competition", pp. 34
82. Gian Paolo Caselli e Gabriele Pastrello [1991] "The 1990 Polish Recession: a Case of Truncated Multiplier Process", pp. 26
83. Gian Paolo Caselli e Gabriele Pastrello [1991] "Polish firms: Private Vices and Public Virtues", pp. 20
84. Sebastiano Brusco e Sergio Paba [1991] "Connessioni, competenze e capacità concorrenziale nell'industria della Sardegna", pp. 25
85. Claudio Grimaldi, Rony Hamaui, Nicola Rossi [1991] "Non marketable assets and households' Portfolio Choice: a Case of Study of Italy", pp. 38
86. Giulio Righi, Massimo Baldini, Alessandra Brambilla [1991] "Le misure degli effetti redistributivi delle imposte indirette: confronto tra modelli alternativi", pp. 47
87. Roberto Fanfani, Luca Lanini [1991] "Innovazione e servizi nello sviluppo della meccanizzazione agricola in Italia", pp. 35
88. Antonella Caiumi e Roberto Golinelli [1992] "Stima e applicazioni di un sistema di domanda Almost Ideal per l'economia italiana", pp. 34
89. Maria Cristina Marcuzzo [1992] "La relazione salari-occupazione tra rigidità reali e rigidità nominali", pp. 30
90. Mario Biagioli [1992] "Employee financial participation in enterprise results in Italy", pp. 50
91. Mario Biagioli [1992] "Wage structure, relative prices and international competitiveness", pp. 50
92. Paolo Silvestri e Giovanni Solinas [1993] "Abbandoni, esiti e carriera scolastica. Uno studio sugli studenti iscritti alla Facoltà di Economia e Commercio dell'Università di Modena nell'anno accademico 1990/1991", pp. 30
93. Gian Paolo Caselli e Luca Martinelli [1993] "Italian GPN growth 1890-1992: a unit root or segmented trend representation?", pp. 30
94. Angela Politi [1993] "La rivoluzione frantesa. I partigiani emiliani tra liberazione e guerra fredda, 1945-1955", pp. 55
95. Alberto Rinaldi [1993] "Lo sviluppo dell'industria metalmeccanica in provincia di Modena: 1945-1990", pp. 70
96. Paolo Emilio Mistrulli [1993] "Debito pubblico, intermediari finanziari e tassi d'interesse: il caso italiano", pp. 30
97. Barbara Pistoresi [1993] "Modelling disaggregate and aggregate labour demand equations. Cointegration analysis of a labour demand function for the main sectors of the Italian economy: 1950-1990", pp. 45
98. Giovanni Bonifati [1993] "Progresso tecnico e accumulazione di conoscenza nella teoria neoclassica della crescita endogena. Una analisi critica del modello di Romer", pp. 50
99. Marcello D'Amato e Barbara Pistoresi [1994] "The relationship(s) among Wages, Prices, Unemployment and Productivity in Italy", pp. 30
100. Mario Forni [1994] "Consumption Volatility and Income Persistence in the Permanent Income Model", pp. 30
101. Barbara Pistoresi [1994] "Using a VECM to characterise the relative importance of permanent and transitory components", pp. 28
102. Gian Paolo Caselli and Gabriele Pastrello [1994] "Polish recovery: from the slump to an old dilemma", pp. 20
103. Sergio Paba [1994] "Imprese visibili, accesso al mercato e organizzazione della produzione", pp. 20
104. Giovanni Bonifati [1994] "Progresso tecnico, investimenti e capacità produttiva", pp. 30
105. Giuseppe Marotta [1994] "Credit view and trade credit: evidence from Italy", pp. 20
106. Margherita Russo [1994] "Unit of investigation for local economic development policies", pp. 25
107. Luigi Brighi [1995] "Monotonicity and the demand theory of the weak axioms", pp. 20
108. Mario Forni e Lucrezia Reichlin [1995] "Modelling the impact of technological change across sectors and over time in manufacturing", pp. 25
109. Marcello D'Amato and Barbara Pistoresi [1995] "Modelling wage growth dynamics in Italy: 1960-1990", pp. 38
110. Massimo Baldini [1995] "INDIMOD. Un modello di microsimulazione per lo studio delle imposte indirette", pp. 37

111. Paolo Bosi [1995] "Regionalismo fiscale e autonomia tributaria: l'emersione di un modello di consenso", pp. 38
112. Massimo Baldini [1995] "Aggregation Factors and Aggregation Bias in Consumer Demand", pp. 33
113. Costanza Torricelli [1995] "The information in the term structure of interest rates. Can stochastic models help in resolving the puzzle?" pp. 25
114. Margherita Russo [1995] "Industrial complex, pôle de développement, distretto industriale. Alcune questioni sulle unità di indagine nell'analisi dello sviluppo." pp. 45
115. Angelika Moryson [1995] "50 Jahre Deutschland. 1945 - 1995" pp. 21
116. Paolo Bosi [1995] "Un punto di vista macroeconomico sulle caratteristiche di lungo periodo del nuovo sistema pensionistico italiano." pp. 32
117. Gian Paolo Caselli e Salvatore Curatolo [1995] "Esistono relazioni stimabili fra dimensione ed efficienza delle istituzioni e crescita produttiva? Un esercizio nello spirito di D.C. North." pp. 11
118. Mario Forni e Marco Lippi [1995] "Permanent income, heterogeneity and the error correction mechanism." pp. 21
119. Barbara Pistoresi [1995] "Co-movements and convergence in international output. A Dynamic Principal Components Analysis" pp. 14
120. Mario Forni e Lucrezia Reichlin [1995] "Dynamic common factors in large cross-section" pp. 17
121. Giuseppe Marotta [1995] "Il credito commerciale in Italia: una nota su alcuni aspetti strutturali e sulle implicazioni di politica monetaria" pp. 20
122. Giovanni Bonifati [1995] "Progresso tecnico, concorrenza e decisioni di investimento: una analisi delle determinanti di lungo periodo degli investimenti" pp. 25
123. Giovanni Bonifati [1995] "Cambiamento tecnico e crescita endogena: una valutazione critica delle ipotesi del modello di Romer" pp. 21
124. Barbara Pistoresi e Marcello D'Amato [1995] "La riservatezza del banchiere centrale è un bene o un male? Effetti dell'informazione incompleta sul benessere in un modello di politica monetaria." pp. 32
125. Barbara Pistoresi [1995] "Radici unitarie e persistenza: l'analisi univariata delle fluttuazioni economiche." pp. 33
126. Barbara Pistoresi e Marcello D'Amato [1995] "Co-movements in European real outputs" pp. 20
127. Antonio Ribba [1996] "Ciclo economico, modello lineare-stocastico, forma dello spettro delle variabili macroeconomiche" pp. 31
128. Carlo Alberto Magni [1996] "Repeatable and una tantum real options: a dynamic programming approach" pp. 23
129. Carlo Alberto Magni [1996] "Opzioni reali d'investimento e interazione competitiva: programmazione dinamica stocastica in optimal stopping" pp. 26
130. Carlo Alberto Magni [1996] "Vaghezza e logica fuzzy nella valutazione di un'opzione reale" pp. 20
131. Giuseppe Marotta [1996] "Does trade credit redistribution thwart monetary policy? Evidence from Italy" pp. 20
132. Mauro Dell'Amico e Marco Trubian [1996] "Almost-optimal solution of large weighted equicut problems" pp. 30
133. Carlo Alberto Magni [1996] "Un esempio di investimento industriale con interazione competitiva e avversione al rischio" pp. 20
134. Margherita Russo, Peter Börkey, Emilio Cubel, François Lévêque, Francisco Mas [1996] "Local sustainability and competitiveness: the case of the ceramic tile industry" pp. 66
135. Margherita Russo [1996] "Cambiamento tecnico e relazioni tra imprese" pp. 190
136. David Avra Lane, Irene Poli, Michele Lalla, Alberto Roverato [1996] "Lezioni di probabilità e inferenza statistica" pp. 288
137. David Avra Lane, Irene Poli, Michele Lalla, Alberto Roverato [1996] "Lezioni di probabilità e inferenza statistica - Esercizi svolti -" pp. 302
138. Barbara Pistoresi [1996] "Is an Aggregate Error Correction Model Representative of Disaggregate Behaviours? An example" pp. 24
139. Luisa Malaguti e Costanza Torricelli [1996] "Monetary policy and the term structure of interest rates", pp. 30
140. Mauro Dell'Amico, Martine Labbé, Francesco Maffioli [1996] "Exact solution of the SONET Ring Loading Problem", pp. 20
141. Mauro Dell'Amico, R.J.M. Vaessens [1996] "Flow and open shop scheduling on two machines with transportation times and machine-independent processing times in NP-hard, pp. 10
142. M. Dell'Amico, F. Maffioli, A. Sciomachen [1996] "A Lagrangean Heuristic for the Pirze Collecting Travelling Salesman Problem", pp. 14
143. Massimo Baldini [1996] "Inequality Decomposition by Income Source in Italy - 1987 - 1993", pp. 20
144. Graziella Bertocchi [1996] "Trade, Wages, and the Persistence of Underdevelopment" pp. 20
145. Graziella Bertocchi and Fabio Canova [1996] "Did Colonization matter for Growth? An Empirical Exploration into the Historical Causes of Africa's Underdevelopment" pp. 32
146. Paola Bertolini [1996] "La modernization de l'agriculture italienne et le cas de l'Emilie Romagne" pp. 20
147. Enrico Giovannetti [1996] "Organisation industrielle et développement local: le cas de l'agroindustrie in Emilie Romagne" pp. 18
148. Maria Elena Bontempi e Roberto Golinelli [1996] "Le determinanti del leverage delle imprese: una applicazione empirica ai settori industriali dell'economia italiana" pp. 31
149. Paola Bertolini [1996] "L'agriculture et la politique agricole italienne face aux recents scenarios", pp. 20
150. Enrico Giovannetti [1996] "Il grado di utilizzo della capacità produttiva come misura dei costi di transazione. Una rilettura di "Nature of the Firm" di R. Coase", pp. 65
151. Enrico Giovannetti [1996] "Il 1° ciclo del Diploma Universitario Economia e Amministrazione delle Imprese", pp. 25
152. Paola Bertolini, Enrico Giovannetti, Giulia Santacaterina [1996] "Il Settore del Verde Pubblico. Analisi della domanda e valutazione economica dei benefici", pp. 35
153. Giovanni Solinas [1996] "Sistemi produttivi del Centro-Nord e del Mezzogiorno. L'industria delle calzature", pp. 55
154. Tindara Addabbo [1996] "Married Women's Labour Supply in Italy in a Regional Perspective", pp. 85
155. Paolo Silvestri, Giuseppe Catalano, Cristina Bevilacqua [1996] "Le tasse universitarie e gli interventi per il diritto allo studio: la prima fase di applicazione di una nuova normativa" pp. 159
156. Sebastiano Brusco, Paolo Bertossi, Margherita Russo [1996] "L'industria dei rifiuti urbani in Italia", pp. 25
157. Paolo Silvestri, Giuseppe Catalano [1996] "Le risorse del sistema universitario italiano: finanziamento e governo" pp. 400
158. Carlo Alberto Magni [1996] "Un semplice modello di opzione di differimento e di vendita in ambito discreto", pp. 10
159. Tito Pietra, Paolo Siconolfi [1996] "Fully Revealing Equilibria in Sequential Economies with Asset Markets" pp. 17
160. Tito Pietra, Paolo Siconolfi [1996] "Extrinsic Uncertainty and the Informational Role of Prices" pp. 42
161. Paolo Bertella Farnetti [1996] "Il negro e il rosso. Un precedente non esplorato dell'integrazione afroamericana negli Stati Uniti" pp. 26
162. David Lane [1996] "Is what is good for each best for all? Learning from others in the information contagion model" pp. 18

163. Antonio Ribba [1996] "A note on the equivalence of long-run and short-run identifying restrictions in cointegrated systems" pp. 10
164. Antonio Ribba [1996] "Scomposizioni permanenti-transitorie in sistemi cointegrati con una applicazione a dati italiani" pp. 23
165. Mário Forni, Sergio Paba [1996] "Economic Growth, Social Cohesion and Crime" pp. 20
166. Mario Forni, Lucrezia Reichlin [1996] "Let's get real: a factor analytical approach to disaggregated business cycle dynamics" pp. 25
167. Marcello D'Amato e Barbara Pistoresi [1996] "So many Italies: Statistical Evidence on Regional Cohesion" pp. 31
168. Elena Bonfiglioli, Paolo Bosi, Stefano Toso [1996] "L'equità del contributo straordinario per l'Europa" pp. 20
169. Graziella Bertocchi, Michael Spagat [1996] "Il ruolo dei licei e delle scuole tecnico-professionali tra progresso tecnologico, conflitto sociale e sviluppo economico" pp. 37
170. Gianna Boero, Costanza Torricelli [1997] "The Expectations Hypothesis of the Term Structure of Interest Rates: Evidence for Germany" pp. 15
171. Mario Forni, Lucrezia Reichlin [1997] "National Policies and Local Economies: Europe and the US" pp. 22
172. Carlo Alberto Magni [1997] "La trappola del Roe e la tridimensionalità del Van in un approccio sistemico", pp. 16
173. Mauro Dell'Amico [1997] "A Linear Time Algorithm for Scheduling Outforests with Communication Delays or Two Processor-pp. 18
174. Paolo Bosi [1997] "Aumentare l'età pensionabile fa diminuire la spesa pensionistica? Ancora sulle caratteristiche di lungo periodo della riforma Dini- pp. 13
175. Paolo Bosi e Massimo Matteuzzi (1997) "Nuovi strumenti per l'assistenza sociale" pp 31
176. Mauro Dell'Amico, Francesco Maffioli e Marco Trubian [1997] "New bounds for optimum traffic assignment in satellite communication" pp. 21
177. Carlo Alberto Magni [1997] "Paradossi, inverosimiglianze e contraddizioni dei Van: operazioni certe" pp. 9
178. Barbara Pistoresi e Marcello D'Amato [1997] "Persistence of relative unemployment rates across italian regions" pp. 25
179. Margherita Russo, Franco Cavedoni e Riccardo Pianesani [1997] "Le spese ambientali dei Comuni in provincia di Modena, 1993-1995" pp. 23
180. Gabriele Pastrello [1997] "Time and Equilibrium, Two Elusive Guests in the Keynes-Hawtrey-Robertson Debate in the Thirties" pp 25
181. Luisa Malaguti e Costanza Torricelli [1997] "The Interaction Between Monetary Policy and the Expectation Hypothesis of the Term Structure of Interest rates in a N-Period Rational Expectation Model" pp. 27
182. Mauro Dell'Amico [1997] "On the Continuous Relaxation of Packing Problems - Technical Note" pp. 8
183. Stefano Bordoni [1997] "Prova di Idoneità di Informatica Dispensa Esercizi Excel 5" pp 49
184. Francesca Bergamini e Stefano Bordoni [1997] "Una verifica empirica di un nuovo metodo di selezione ottima di portafoglio" pp. 22
185. Gian Paolo Caselli e Maurizio Battini [1997] "Following the tracks of Atkinson and Micklewright: the changing distribution of income and earnings in Poland from 1989 to 1995" pp. 21
186. Mauro Dell'Amico e Francesco Maffioli [1997] "Combining Linear and Non-Linear Objectives in Spanning Tree Problems" pp. 21
187. Gianni Ricci e Vanessa Debbia [1997] "Una soluzione evolutiva in un gioco differenziale di lotta di classe" pp. 14
188. Fabio Canova e Eva Ortega [1997] "Testing Calibrated General Equilibrium Model" pp 34
189. Fabio Canova [1997] "Does Detrending Matter for the Determination of the Reference Cycle and the Selection of Turning Points?" Pp. 35
190. Fabio Canova e Gianni De Nicolò [1997] "The Equity Premium and the Risk Free Rate: A Cross Country, Cross Maturity Examination" pp.41
191. Fabio Canova e Angel J. Ubide [1997] "International Business Cycles, Financial Market and Household Production" pp. 32
192. Fabio Canova e Gianni De Nicolò [1997] "Stock Returns, Term Structure, Inflation and Real Activity: An International Perspective" pp. 33
193. Fabio Canova e Morten Ravn [1997] "The Macroeconomic Effects of German Unification: Real Adjustments and the Welfare State" pp.34
194. Fabio Canova [1997] "Detrending and Business Cycle Facts" pp. 40
195. Fabio Canova e Morten O, Ravn [1997] "Crossing the Rio Grande: Migrations, Business Cycle and the Welfare State" pp. 37
196. Fabio Canova e Jane Murrin [1997] "Sources and Propagation of International Output Cycles: Common Shocks or Transmission?" pp. 41
197. Fabio Canova e Albert Marcet [1997] "The Poor Stay Poor: Non-Convergence Across Countries and Regions" pp. 44
198. Carlo Alberto Magni [1997] "Un Criterio Strutturalista per la Valutazione di Investimenti" pp. 17
199. Stefano Bordoni [1997] "Elaborazione Automatica dei Dati" pp. 60
200. Paolo Bertella Farnetti [1997] "The United States and the Origins of European Integration" pp 19
201. Paolo Bosi [1997] "Sul Controllo Dinamico di un Sistema Pensionistico a Ripartizione di Tipo Contributivo" pp. 17
202. Paola Bertolini [1997] "European Union Agricultural Policy: Problems and Perspectives" pp. 18
203. Stefano Bordoni [1997] "Supporti Informatici per la Ricerca delle soluzioni di Problemi Decisionali" pp. 30
204. Carlo Alberto Magni [1997] "Paradossi, Inverosimiglianze e Contraddizioni del Van: Operazioni Aleatorie" pp. 10
205. Carlo Alberto Magni [1997] "Tir, Roe e Van: Distorsioni Linguistiche e Cognitive nella Valutazione degli Investimenti" pp. 17
206. Gisella Facchinetti, Roberto Ghiselli Ricci e Silvia Muzzioli [1997] "New Methods For Ranking Triangular Fuzzy Numbers: An Investment Choice" pp.
207. Mauro Dell'Amico e Silvano Martello [1997] "Reduction of the Three-Partition Problem" pp. 19
208. Carlo Alberto Magni [1997] "IRR, ROE and NPV: a Systemic Approach" pp. 20
209. Mauro Dell'Amico, Andrea Lodi e Francesco Maffioli [1997] "Solution of the cumulative assignment problem with a well-structured tabu search method" pp. 25
210. Carlo Alberto Magni [1997] "La definizione di investimento e criterio del Tir ovvero: la realtà inventata" pp. 16
211. Carlo Alberto Magni [1997] "Critica alla definizione classica di investimento: un approccio sistemico" pp. 17
212. Alberto Roverato [1997] "Asymptotic prior to posterior analysis for graphical gaussian models" pp. 8
213. Tindara Addabbo [1997] "Povertà nel 1995 analisi statica e dinamica sui redditi familiari" pp. 64
214. Gian Paolo Caselli e Franca Manghi [1997] "La transizione da piano a mercato e il modello di Ising" pp. 15
215. Tindara Addabbo [1998] "Lavoro non pagato e reddito esteso: una applicazione alle famiglie italiane in cui entrambi i coniugi sono lavoratori dipendenti" pp. 54

216. Tindara Addabbo [1998] "Probabilità di occupazione e aspettative individuali" pp. 36
217. Lara Magnani [1998] "Transazioni, contratti e organizzazioni: una chiave di lettura della teoria economica dell'organizzazione" pp. 39
218. Michele Lalla, Rosella Molinari e Maria Grazia Modena [1998] "La progressione delle carriere: i percorsi in cardiologia" pp. 46
219. Lara Magnani [1998] "L'organizzazione delle transazioni di subfornitura nel distretto industriale" pp. 40
220. Antonio Ribba [1998] "Recursive VAR orderings and identification of permanent and transitory shocks" pp. 12
221. Antonio Ribba [1998] "Granger-causality and exogeneity in cointegrated Var models" pp. 5
222. Luigi Brighi e Marcello D'Amato [1998] "Optimal Procurement in Multiproduct Monopoly" pp. 25
223. Paolo Bosi, Maria Cecilia Guerra e Paolo Silvestri [1998] "La spesa sociale nel comune Modena Rapporto intermedio" pp. 37
224. Mario Forni e Marco Lippi [1998] "On the Microfoundations of Dynamic Macroeconomics" pp. 22
225. Roberto Ghiselli Ricci [1998] "Nuove Proposte di Ordinamento di Numeri Fuzzy. Una Applicazione ad un Problema di Finanziamento" pp. 7
226. Tommaso Minerva [1998] "Internet Domande e Risposte" pp. 183
227. Tommaso Minerva [1998] "Elementi di Statistica Computazionale. Parte Prima: Il Sistema Operativo Unix ed il Linguaggio C" pp. 57
228. Tommaso Minerva and Irene Poli [1998] "A Genetic Algorithms Selection Method for Predictive Neural Nets and Linear Models" pp. 60
229. Tommaso Minerva and Irene Poli [1998] "Building an ARMA model by using a Genetic Algorithm" pp. 60
230. Mauro Dell'Amico e Paolo Toth [1998] "Algorithms and Codes for Dense Assignment Problems the State of the Art" pp. 35
231. Ennio Cavazzuti e Nicoletta Pacchiarotti [1998] "How to play an Hotelling game in a square town" pp. 12
232. Alberto Roverato e Irene Poli [1998] "Un algoritmo genetico per la selezione di modelli grafici" pp. 11
233. Marcello D'Amato e Barbara Pistoiesi [1998] "Delegation of Monetary Policy to a Central Banker with Private Information" pp. 15
234. Graziella Bertocchi e Michael Spagat [1998] "The Evolution of Modern Educational Systems. Technical vs. General Education, Distributional Conflict, and Growth" pp. 31
235. André Dumas [1998] "Le système monétaire Européen" pp. 24
236. Gianna Boero, Gianluca Di Lorenzo e Costanza Torricelli [1998] "The influence of short rate predictability and monetary policy on tests of the expectations hypothesis: some comparative evidence" pp. 30
237. Carlo Alberto Magni [1998] "A systemic rule for investment decisions: generalizations of the traditional DCF criteria and new conceptions" pp. 30
238. Marcello D'Amato e Barbara Pistoiesi [1998] "Interest Rate Spreads Between Italy and Germany: 1995-1997" pp. 16
239. Paola Bertolini e Alberto Bertacchini [1998] "Il distretto di lavorazioni carni suine in provincia di Modena" pp. 29
240. Costanza Torricelli e Gianluca Di Lorenzo [1998] "Una nota sui fondamenti matematico-finanziari della teoria delle aspettative della struttura della scadenza" pp. 15
241. Christophe Croux, Mario Fonti e Lucrezia Reichlin [1998] "A Measure of Comovement for Economic Indicators: Theory and Empirics" pp. 23
242. Carlo Alberto Magni [1998] "Note sparse sul dilemma del prigioniero (e non solo)" pp. 13
243. Gian Paolo Caselli [1998] "The future of mass consumption society in the former planned economies: a macro approach" pp. 21
244. Mario Forni, Marc Hallin, Marco Lippi e Lucrezia Reichlin [1998] "The generalized dynamic factor model: identification and estimation" pp. 35
245. Carlo Alberto Magni [1998] "Pictures, language and research: the case of finance and financial mathematics" pp. 35
246. Luigi Brighi [1998] "Demand and generalized monotonicity" pp. 21
247. Mario Forni e Lucrezia Reichlin [1998] "Risk and potential insurance in Europe" pp. 20
248. Tommaso Minerva, Sandra Paterlini e Irene Poli [1998] "A Genetic Algorithm for predictive Neural Network Design (GANND). A Financial Application" pp. 12
249. Gian Paolo Caselli Maurizio Battini [1998] "The Changing Distribution of Earnings in Poland from 1989 to 1996" pp. 9
250. Mario Forni Sergio Paba [1998] "Industrial Districts, Social Environment and Local Growth: Evidence from Italy" pp. 27
251. Lara Magnani [1998] "Un'analisi del distretto industriale fondata sulla moderna teoria economica dell'organizzazione" pp. 46
252. Mario Forni Lucrezia Reichlin [1998] "Federal Policies and Local Economies: Europe and the US" pp. 24
253. Luigi Brighi [1998] "A Case of Optimal Regulation with Multidimensional Private Information" pp. 20
254. Barbara Pistoiesi Stefania Luppi [1998] "Gli investimenti diretti esteri nell'America Latina e nel Sud Est Asiatico: 1982-1995" pp. 27
255. Paola Mengoli Margherita Russo [1998] "Technical and Vocational Education and Training in Italy: Structure and Changes at National and Regional Level" pp. 25
256. Tindara Addabbo [1998] "On-the-Job Search a Microeconomic Analysis on Italian Data" pp. 29
257. Lorenzo Bertucelli [1999] "Il paternalismo industriale: una discussione storiografica" pp. 21
258. Mario Forni e Marco Lippi [1999] "The generalized dynamic factor model: representation theory" pp. 25
259. Andrea Ginzburg e Annamaria Simonazzi [1999] "Foreign debt cycles and the 'Gibson Paradox': an interpretative hypothesis" pp. 38
260. Paolo Bosi [1999] "La riforma della spesa per assistenza dalla Commissione Onofri ad oggi: una valutazione in corso d'opera" pp. 56
261. Marcello D'Amato e Barbara Pistoiesi [1999] "Go and soothe the row. Delegation of monetary policy under private information" pp. 23
262. Michele Lalla [1999] "Sampling, Maintenance, and Weighting Schemes for Longitudinal Surveys: a Case Study of the Textile and Clothing Industry" pp. 27
263. Pederzoli Chiara e Torricelli Costanza [1999] "Una rassegna sui metodi di stima del Value at Risk (Var)"
264. Paolo Bosi, Maria Cecilia Guerra e Paolo Silvestri [1999] "La spesa sociale di Modena. La valutazione della condizione economica" pp. 74
265. Graziella Bertocchi e Michael Spagat [1999] "The Politics of Co-optation" pp. 14
266. Giovanni Bonifati [1999] "The Capacity to Generate Investment. An analysis of the long-term determinants of investment" pp. 22
267. Tindara Addabbo e Antonella Caiumi [1999] "Extended Income and Inequality by Gender in Italy" pp. 40
268. Antonella Caiumi e Federico Perali [1999] "Children and Intra-household Distribution of Resources: An Estimate of the Sharing Rule of Italian Households" pp. 24
269. Vincenzo Atella. Antonella Caiumi e Federico Perali [1999] "Una scala di equivalenza non vale l'altra" pp. 23

270. Tito Pietra e Paolo Siconolfi [1999] "Volume of Trade and Revelation of Information" pp. 31
271. Antonella Picchio [1999] "La questione del lavoro non pagato nella produzione di servizi nel nucleo domestico (Household)" pp.58
272. Margherita Russo [1999] "Complementary Innovations and Generative Relationships in a Small Business Production System: the Case of Kervit" pp. 27
273. André Dumas [1999] "L'Economie de la drogue" pp. 12
274. André Dumas [1999] "L'Euro à l'heure actuelle" pp. 12
275. Michele Lalla Gisella Facchinetti [1999] "La valutazione della attività didattica: un confronto tra scale di misura e insiemi sfocati" pp.32
276. Mario Biagioli [1999] "Formazione e valorizzazione del capitale umano: un'indagine sui paesi dell'Unione Europea" pp.21
277. Mario Biagioli [1999] "Disoccupazione, formazione del capitale umano e determinazione dei salari individuali: un'indagine su microdati nei paesi dell'Unione Europea" pp. 15
278. Gian Paolo Caselli e Giulia Bruni [1999] "Il settore petrolifero russo, il petrolio del Mar Caspio e gli interessi geopolitici nell'area" pp. 28
279. Luca Gambetti [1999] "The Real Effect of Monetary Policy: a New Var Identification Procedure" pp. 22
280. Marcello D'Amato Barbara Pistoresi [1999] "Assessing Potential Targets for Labour Market Reforms in Italy" pp. 8
281. Gian Paolo Caselli, Giulia Bruni e Francesco Pattarin [1999] "Gaddy and Ickes Model of Russian Barter Economy: Some Criticisms and Considerations" pp. 10
282. Silvia Muzzioli Costanza Torricelli [1999] "A Model for Pricing an Option with a Fuzzy Payoff" pp. 13
283. Antonella Caiumi Federico Perali [1999] "Povertà e Welfare in Italia in Relazione alla Scelta della Scala di Equivalenza" pp.25
284. Marcello Galli Tommaso Minerva [1999] "Algoritmi Genetici per l'Evoluzione di Modelli Lineari *Metodologia ad Applicazioni*" pp. 36
285. Mario Forni Sergio Paba [1999] "Knowledge Spillovers and the Growth of Local Industries" pp. 20
286. Gisella Facchinetti Giovanni Mastroleo [1999] "Un confronto tra uno score card ed un approccio fuzzy per la concessione del credito personale" pp.27
287. Gisella Facchinetti Giovanni Mastroleo e Sergio Paba [1999] "A Statistical and Fuzzy Algorithm for the Identification of Industrial Districts" pp. 6
288. Tommaso Minerva [1999] "Didattica e Informatica- *Una indagine Statistica relativa alla Provincia di Modena sul rapporto tra Insegnanti e Nuove Tecnologie*" pp. 46
289. Andrea Ginzburg [1999] "Sraffa e l'analisi sociale: alcune note metodologiche" pp. 37
290. Consolato Pellegrino Carla Fiori [1999] "Piani Formalmente Euclidei" pp. 11
291. Nicolina A. Malara, Maria Teresa Brandoli e Carla Fiori [1999] "Comportamenti di Studenti in Ingresso all'Università di Fronte allo Studio di Disequazioni" pp. 15
292. Consolato Pellegrino Maria Teresa Brandoli [1999] "Il Principio D'Induzione Euristica-Mente Parlando" pp. 11
293. Paolo Bertella Fametti [1999] "Winston Churchill e l'unità europea" pp. 25
294. Tindara Addabbo Massimo Baldini [1999] "Safety net and poverty dynamics in Italy in the early nineties" pp. 23
295. Margherita Russo [2000] "Innovation Dynamics and Industrial Dynamics in a Local Production System. Changes in the Agents/Artifacts Space in Tile Decoration: from Silk Screen to Laser Engraved Silicon Cylinder" pp. 45
296. Gianluca Masci e Margherita Russo [2000] "L'attività brevettuale nel distretto ceramico, 1971-1998" pp. 41
297. Paola Mengoli e Margherita Russo [2000] "Competenze, innovazione e sviluppo locale" pp. 31
298. Gian Paolo Caselli e Tommaso Minerva [2000] "The Transition Process in Russia and China and the Ising Model" pp. 30
299. Gisella Facchinetti, Giovanni Mastroleo e Sergio Paba (2000) "A Fuzzy Approach to the Empirical Identification of Industrial Districts" pp. 7
300. Tommaso Minerva, Irene Poli and Sebastiano Brusco [2000] "A Cellular Automaton as a Model to Study the Dynamics of an Industrial District" pp. 6
301. Gisella Facchinetti [2000] "Il problema della misurazione del rischio di credito: una rassegna critica di metodologie" pp. 13
302. Marco Mazzoli [2000] "Investments and Financial Structure with Imperfect Financial Markets: an Intertemporal Discrete-Time Framework" pp.13
303. Giuseppe Marotta [2000] "Il credito commerciale in Italia: evidenza su dati d'impresa" pp. 29
304. Marco Mazzoli [2000] "Credit Channel and Industrial Firms' Market Power" pp. 15
305. Gisella Facchinetti e Giovanni Mastroleo [2000] "The Mamdani and the  $\gamma$ -operator in a Fuzzy Logic Control System" pp. 17
306. Giovanni Solinas e Giovanni Mastroleo [2000] "Benchmarking certificazione della qualità e piccole imprese. La sperimentazione di un modello europeo nelle piccole imprese in Emilia Romagna" pp. 45
307. Margherita Russo, Giorgio Allari, Silvano Bertini, Paolo Bonaretti, Elio De Leo, Giuseppe Fiorani and Gianni Rinaldini [2000] "The Challenges for the Next Debate: Notes for a Debate on the Development of the Emilia-Romagna Region" pp. 27
308. Giovanni Mastroleo [2000] "L' integrazione dell'indagine statistica con l' approccio fuzzy nel controllo di efficacia: il monitoraggio sugli obiettivi raggiunti nell'ambito di un P.O.M" pp. 24
309. Gisella Facchinetti, Stefano Bordini e Giovanni Mastroleo [2000] "Bank Creditworthiness Using Fuzzy Systems: A Comparison with a Classical Analysis Approach" pp. 13
310. Margherita Russo e Raffaele Giardino [2000] "Struttura e cambiamento nelle relazioni tra le imprese meccaniche. I. La popolazione di imprese meccaniche della provincia di Modena procedure impiegate per integrare le informazioni amministrative del Registro Imprese e dell'Inps" pp. 32
311. Tommaso Minerva e Sandra Paterlini [2000] "Tecniche Computazionali per la Statistica, l' Economia e la Finanza, *Materiale Didattico a Supporto del Corso di Statistica Computazionale*" pp.52
312. Costanza Torricelli e Silvia Muzzioli [2000] "Combining the Theory of Evidence with Fuzzy Sets for Binomial Option Pricing" pp.20
313. Marco Mazzoli e Roberto Negrini [2000] "Strumenti finanziari negoziabili e incentivo-compatibili per le imprese cooperative. *Alcune considerazioni teoriche e di policy*" pp. 32
314. Giacomo Galeotti e Tommaso Minerva [2000] "Algoritmi ibridi per l'ottimizzazione di un Portafoglio Azionario. *Simulazione stocastica filtrata mediante wavelet decomposition*" pp.33
315. Alberto Roverato [2000] "Hyper Inverse Wishart Distribution for Non-Decomposable Graphs and its Application to Bayesian Inference for Gaussian Graphical Models" pp. 29
316. Carlo Alberto Magni [2000] "Scomposizione di sovrapprofitti: Economic Value Added e valore aggiunto sistematico" pp. 25
317. Carlo Alberto Magni [2000] "Decomposition of a Certain Cash Flow Stream: Systemic Value Added and Net Final Value" pp. 30
318. Carlo Alberto Magni [2000] "Systemic Value Added, Residual Income and Decomposition of a Cash Flow Stream" pp 27
319. Gisella Facchinetti e Giovanni Mastroleo [2000] "La valutazione del rischio di frode nel ramo assicurativo R.C. auto: una proposta in logica Fuzzy" pp. 16

320. Gian Paolo Caselli e Gabriele Pastrello [2000] "Eltsin: Dimissioni o Licenziamento?" pp. 18
321. Gisella Facchinetti, Carlo Alberto Magni e Giovanni Mastroleo [2000] "Real Options: a Fuzzy Approach for Strategic Investments" pp.44
322. Stefano Bordoni [2000] "Applicazione Fuzzy per la determinazione del premio assicurativo" pp. 35
323. Gabriele Pastrello [2000] "Una distrazione di Marx" pp. 17
324. Marco Mazzoli [2000] "Canale creditizio, struttura di mercato, modifiche istituzionali e meccanismo di trasmissione della politica monetaria" pp. 18
325. Paola Bertolini e Luca Riazzi [2000] "L'applicabilità dello strumento futures al Mediterraneo: riflessioni su un fallimento" pp.28
326. Enrico Giovannetti [2000] "Istituzioni e costi transattivi: l'impatto della regolazione dell'offerta nelle filiere agroindustriali" pp. 26
327. Gian Paolo Caselli e Marta Rosso [2000] "La moneta elettronica: aspetti di regolamentazione finanziaria".
328. Barbara Pistoresi e Chiara Strozzi [2000] "Labor Productivity and Labor Cost Dynamics in Italy: the Role of Wage Bargaining" pp. 23
329. Carlo Alberto Magni [2000] "Valore Aggiunto Sistemico: un'alternativa all'EVA quale indice di sovrapprofitto periodale" pp.11
330. Carlo Alberto Magni [2000] "On Decomposing Net Final Values: Systemic Value Added and Shadow Project" pp. 26
331. Massimo Baldini [2000] "MAPP98: un Modello di Analisi delle Politiche Pubbliche" pp. 24
332. Paolo Bosi, Massimo Baldini, Maria Cecilia Guerra e Paolo Silvestri [2000] "La scelta tra ICI e Addizionale all'Irpef nella Politica tributaria locale: aspetti distributivi" pp. 27
333. Marina Murat e Sergio Paba [2000] "Flussi migratori e modelli di sviluppo industriale- *L'esperienza italiana dal dopoguerra agli anni novanta*" pp. 32
334. Marco Mazzoli e Roberto Negrini [2000] "Incentive-Compatible Financial Instruments for Co-Operative Firms: a Few Policy Considerations" pp. 27
335. Massimo Baldini e Paolo Bosi [2000] "Riforme trasparenti e proposte opache" pp. 10
336. Paolo Bosi [2000] "La selettività nelle politiche sociali in Italia: riflessioni sull'esperienza dell'Ise" pp. 16
337. Massimo Baldini, Paolo Bosi e Stefano Toso [2000] "Targeting Welfare in Italy: Old Problems and Perspectives of Reform" pp. 21
338. Tindara Addabbo e Massimo Baldini [2000] "The Gender Impact of Workfare Policies in Italy and the Effect of Unpaid Work" pp. 15
339. Gian Paolo Caselli e Thoma Grid [2000] "La storia economica albanese 1912-1939 e lo stabilirsi dell'egemonia italiana" pp. 46
340. Tommaso Minerva [2000] "La costruzione di modelli con algoritmi genetici" pp. 183
341. Giovanni Bonifati [2000] "PRODUZIONE, INVESTIMENTI E PRODUTTIVITA'. Rendimenti crescenti e cambiamento strutturale nell'industria manifatturiera americana (1960-1994)" pp. 43
342. Luciano Messori [2000] "Struttura e quantificazione di una imposizione fiscale Pigouviana sulla benzina" pp. 20
343. Carlo Alberto Magni [2000] "Zelig and the Art of Measuring Residual Income" pp. 18
344. Sandra Paterlini, Stefano Favaro e Tommaso Minerva [2001] "Genetic Approaches for Data Clustering" pp. 4
345. Enrico Giovannetti [2001] "Processi di vita delle imprese cooperative: mezzo secolo di cooperazione a Modena, dal dopoguerra a oggi" pp. 34
346. Giuseppe Marotta [2001] "Is Trade Credit More Expensive Than Bank Loans? Evidence from Italian Firm-level Data" pp. 26
347. Massimo Baldini e Paolo Bosi [2001] "Flat Rate Tax, Dividendo sociale e riforma dei programmi di spesa di assistenza" pp. 34
348. Paolo Bosi e Maria Cecilia Guerra [2001] "Meno Tasse per tutti: lusinghe e ambiguità di uno slogan" pp. 17
349. Danilo Mercurio e Costanza Torricelli [2001] "Estimation and Arbitrage Opportunities for Exchange Rate Baskets" pp. 27
350. Gian Paolo Caselli e Grid Thoma [2001] "L'economia albanese durante il secondo conflitto mondiale e il primo tentativo di pianificazione" pp. 33
351. Massimo Baldini e Carlo Mazzaferro [2001] "Sistema pensionistico e distribuzione dei redditi in Italia dal 1997 al 1998: un'analisi sull'archivio storico dell'indagine campionaria della banca d'Italia" pp.16
352. Silvia Giannini [2001] "La tassazione del reddito d'impresa e le scelte di investimento, finanziamento e localizzazione dell'attività produttiva" pp. 13
353. Michele Baccharini [2001] "Un quadro normativo delle fattispecie contrattuali "atipiche" in Italia. *Disciplina legislativa e definizioni statistiche del lavoro a tempo parziale*" pp. 29
354. Michele Baccharini [2001] "Sul grado di volontarietà e di sottoccupazione del lavoro dipendente "atipico". *Un'analisi delle valutazioni dei lavoratori*" pp. 43
355. Maria Cecilia Guerra [2001] "La Previdenza Complementare deve essere incentivata fiscalmente?" pp. 22
356. Gabriele Pastrello [2001] "An Oversight of Marx's" pp. 66
357. Alberto Roverato e Consonni Guido [2001] "Compatible prior distributions for DAG models" pp. 28
358. Luigi Brighi e Reinhard John [2001] "Characterizations of Pseudomonotone Maps and Economic Equilibrium" pp.25
359. Luigi Brighi [2001] "A Stronger Criterion for the Weak Weak Axiom" pp.16
360. Luigi Brighi [2001] "The Weak Axiom, the  $\sigma$ -Axiom and Complete Non-Transitive Rationality" pp.14
361. Luigi Brighi e Reinhard John [2001] "Some Conditions for Wald's Weak Axiom" pp. 10
362. Sebastiano Brusco, Tommaso Minerva e Giovanni Solinas [2001] "Un automa cellulare per lo studio dei distretti industriali" pp. 30
363. Nicola Walter Palmieri [2001] "Internet e la libertà di espressione" pp. 65
364. Marco Mazzoli [2001] "A Simple Enquiry on Heterogeneous Lending Rates and Lending Behaviour" pp. 37
365. Massimo Baldini e Paolo Onofri [2001] "Transizione demografica e mercati finanziari" pp. 19
366. Marco Mazzoli [2001] "Industrial Firms' Market Power and Credit Market Oligopsony in Developing Countries" pp.14
367. Gisella Facchinetti, Silvio Giove e Nicoletta Pacchiarotti [2001] "Optimisation of a Fuzzy non Linear Function" pp. 10
368. Silvia Muzzioli e Costanza Torricelli [2001] "Implied Trees in Illiquid Markets: a Choquet Pricing Approach" pp. 18
369. Cinzia Mortarino [2001] "A Decomposition for a Stochastic Matrix with an Application to Manova" pp.
370. Sandra Paterlini e Tommaso Minerva [2001] "Evolutionary Cluster Analysis" pp. 8
371. Paola Bertolini [2001] "Globalisation et Systèmes Agro-alimentaires de qualité en Italie. Le cas du District de Trasformation des Viandes Porcines" pp. 28
372. Sandra Paterlini, Francesco Pattarin e Tommaso Minerva [2001] "Time Series and Data Clustering with Evolutionary Approaches" pp. 26

373. Giovanna Procacci, Luigi Tommasini, Nicola Labanca, Giancarlo Falco, Fabrizio Bienintesi, Alessandro Polsi, Paul Corner e Leonardo Paggi [2001] "Assistenzialismo e politiche di controllo sociale nell'Italia liberale e fascista" pp. 240
374. Andrea Ginzburg e Antonio Ribba [2001] "Vizi e virtù del monetarismo democratico: un promemoria per il futuro" pp. 31
375. Giuseppe Marotta [2001] "La direttiva comunitaria contro i ritardi nei pagamenti tra imprese. Alcune riflessioni sul caso italiano" pp. 20
376. Carlo Mazzaferro e Stefano Toso [2001] "La spesa per previdenza ed assistenza: riforme in corso e nuovi scenari" pp.16
377. Silvia Giannini e Maria Cecilia Guerra [2001] "Requiem per la riforma Visco?" pp.25
378. Andrea Francalanci e Stefano Toso [2001] "Spesa sociale e meccanismi di mercato: i buoni servizio (*vouchers*)" pp. 25
379. Maria Elena Bontempi, Silvia Giannini, Maria Cecilia Guerra e Angela Tiraferri [2001] "Incentivi agli investimenti e tassazione del reddito di impresa: una valutazione delle recenti innovazioni normative" pp. 33
380. Marina Murat [2001] "Growth, Trade and Unemployment" pp.34
381. Tindara Addabbo F. Olivier [2001] "Offerta di lavoro e servizi all'infanzia in Italia" pp.23
382. Enrico Giovannetti [2001] "Evoluzione delle imprese cooperative: un'analisi con i modelli di durata" pp.22
383. Luigi Brighi e Marcello D'Amato [2001] "Two-Dimensional Screening: A Case of Monopoly Regulation" pp. 20
384. Enrico Giovannetti [2001] "Le virtù dei commons: imprese cooperative e formazione di beni pubblici di filiera" pp. 30
385. Enrico Giovannetti [2001] "La divisione del lavoro è limitata dalla divisione del lavoro" pp. 26
386. Paola Bertolini, Michele Bruni e Enrico Giovannetti [2001] "Struttura produttiva e mercato del lavoro nell'agroindustria: evoluzione tecnologica e bisogni formativi" pp. 174
387. Luca Gambetti e Barbara Pistori [2001] "Policy Matters. The Long Run Effects of Aggregate Demand and Mark Up Shocks on the Italian Unemployment Rate" pp. 19
388. Paola Bertolini e Montanari Marco [2001] "Valutazione dell'allargamento dell'unione europea ad Est attraverso un modello gravitazionale" pp. 20
389. Massimo Baldini [2001] "Politiche Pubbliche Locali e Diseguaglianza dei Redditi" pp. 39
390. Carlo Mazzaferro [2001] "Uno schema per la valutazione del trattamento fiscale del risparmio pensionistico" pp.16
391. Paolo Bertella Farnetti [2001] "Disegni d'Europa. La lotta per l'unità europea negli Stati Uniti, 1940-1945" pp. 46
392. Claudio Marra [2001] "Fattori sociologici e fattori psicologici nello studio delle relazioni interretniche: il concetto di atteggiamento" pp. 119
393. Anna Maria Sala [2001] "Marchio di qualità e servizi turistici" pp.33
394. Michele Lalla [2001] "Struttura e cambiamento nelle relazioni tra le imprese metalmeccaniche nella provincia di Modena. II Distribuzioni degli addetti e pesi per le stime dei parametri" pp. 24
395. Silvia Giannini e Carola Maggiulli [2001] "The effective tax rates in the EU Commission Study on corporate taxation: methodological aspects, main results and policy implications" pp. 22
396. Elena Pirani e Margherita Russo [2001] "Struttura e cambiamento nelle relazioni tra le imprese metalmeccaniche nella provincia di Modena III. Aspetti metodologici dell'indagine empirica: fase di rilevazione, controlli e statistiche preliminari" pp 52
397. Margherita Russo e Rossella Ruggeri [2001] "Memoria e identità: un binomio creativo. Proposta per il recupero di parte dell'edificio della più antica fabbrica metalmeccanica di Modena: Officine Rizzi" pp. 38
398. Margherita Russo e Elena Pirani [2001] "Struttura e dinamica dei cambiamenti nelle relazioni tra le imprese metalmeccaniche in provincia di Modena. IV Primi risultati dell'indagine empirica" pp. 88
399. Giovanni Solinas [2002] "La certificazione come strumento per la politica industriale. L'esperienza dell'Emilia Romagna" pp. 28
400. Antonio Ribba [2002] "Persistent Disinflationary Effects on Unemployment in a Small Open Economy: Italy 1979-1995" pp. 20
401. Dino Rizzi e Paolo Silvestri [2002] "The Evaluation of the Italian University System: a Recent History" pp. 23
402. Paolo Bosi e M. Cecilia Guerra [2002] "The Role of Tax Incentives in Voluntary Pensions Schemes in Italy: what can other Countries Learn from this?" pp.23
403. Baldini Massimo e Paolo Bosi [2002] "La riforma dell'imposta sul reddito: aspetti di equità e di efficienza" pp. 36
404. Donoghue, Baldini, Bosi, Mantovani, Toso et Al.[2002] "The Impact of Means Tested Assistance in Southern Europe" pp.20
405. Bertella Farnetti [2002] "George Kennan e la divisione dell'Europa dopo la seconda guerra mondiale" pp. 111
406. Francesco Forte Gisella Facchinetti Michela Mantovani e Giovanni Mastroleo [2002] "Auction Reserve Prices Modelled by Fuzzy Export System" pp. 16
407. Stephane Ghio e Barbara Pistori [2002] "The Importance of Local and Global Externalities for the Urban Industrial Development. A Dynamic Factor Analysis" pp. 13
408. Antonio Ribba [2002] "Short-Run and Long-Run Interaction Between Inflation and Unemployment in the United States" pp. 7
409. Antonella Picchio [2002] "Fieno, carote, pane e rose: salario netto e di sussistenza nelle carte dell'archivio di Sraffa" pp. 45
410. Antonella Picchio [2002] "Needs and Passions of Human Subsistence in the Moral Economy of the Early 18<sup>th</sup> Century" pp. 26
411. Antonio Ribba [2002] "Permanent-Transitory Decomposition and Traditional Measures of Core Inflation" pp. 9
412. Baldini M., Onofri P., Mazzaferro C. [2002] "The Reform of Italian Pension System and its Effects on Saving Behaviour" pp.82
413. Massimo Gatti e Costanza Torricelli [2002] "Quanto reale è il potere delle opzioni reali? *Le imprese Tmt e il caso Tiscali*" pp. 30
414. Giovanni Bonifati [2002] "The Relationships Between Goods-Producing and Services-Producing Activities in the US Economy: an Intersectoral Analysis" pp. 26
415. M. Baldini, P. Bosi, M. Matteuzzi, [2002] "L'imposta sul reddito nel disegno di legge sulla riforma del sistema tributario: aspetti di equità e di efficienza" pp. 19
416. Giovanni Mottura [2002] "NON SOLO BRACCIA. Condizioni di lavoro e percorsi di inserimento sociale degli immigrati in un'area ad economia diffusa" pp. 165
417. Alberto Rinaldi [2002] "The Emilian Model Revisited: Twenty Years After" pp. 28
418. Anna Maria Sala [2002] "Marchio di qualità e servizi turistici. *L'offerta alberghiera*" pp. 69
419. Carlo Alberto Magni [2002] "Antinomie e illusioni cognitive nel criterio del valore attuale netto" pp. 28
420. Graziella Bertocchi [2002] "The Law of Primogeniture and the Transition from Landed Aristocracy to Industrial Democracy" pp. 42
421. Nicola Walter Palmieri [2002] "Diritto della comunicazione e dell'informazione" pp.280
422. Paolo Bertella Farnetti [2002] "Coudenhove-Kalergi, Fulbright e la Lotta per gli Stati Uniti d'Europa" pp. 83
423. Alberto Roverato e Sandra Paterlini [2002] "Technological Modelling for Graphical Models: an Approach Based on Genetic Algorithms" pp. 20



- 424 Antonella Picchio [2002] "Un approccio macroeconomico ad uno standar di vita esteso" pp.
- 425 Antonio Ribba [2003] "The Joint Dynamics of Inflation, Unemployment and Interest Rate in the United States Since 1980" pp. 13
- 426 Alberto Rinaldi e Michelangelo Vasta [2003] "The Structure of Italian Capitalism, 1952-1972: New Evidence Using the Interlocking Directorates Technique" pp.37
- 427 Paolo Bosi [2003] "Politica dei redditi e riforme del Welfare" pp. 18
- 428 Michele Lalla [2003] "Una strategia di ripartizione dei fondi di incentivazione dei professori e dei ricercatori universitari" pp.29
- 429 Giuseppe Marotta [2003] "When do Trade Credit Discounts Matter? Evidence from Italian Firm-Level Data" pp. 26
- 430 Carlo Alberto Magni [2003] "Cost, Profit and Counterfactual Conditionals" pp.28
- 431 Michele Lalla [2003] "Il disegno dell'indagine sulle condizioni economiche e sociali delle famiglie nella Provincia di Modena" pp. 47
- 432 Chiara Pederzoli [2003] "Stochastic Volatility and GARCH: A comparison based on UK stock data" pp. 24
- 433 Tindara Addabbo [2003] "Gender auditing dei bilanci e delle politiche pubbliche" pp. 14
- 434 Gianni Ricci e Michele Lalla [2003] "Organizzazione e valutazione della didattica nella Facoltà di Economia di Modena" pp. 64
- 435 Chiara Strozzi [2003] "The sustainability of Transnational Collective Bargaining Policies" pp. 33
- 436 Marianna Brunetti e Costanza Torricelli [2003] "The Put-Call Parity in the Index Options Markets. Further results for the Italian Mib30 Options market" pp. 23
- 437 Margherita Russo e Elena Pirani [2003] "Struttura e cambiamento nelle relazioni tra le imprese metalmeccaniche della provincia di Modena. V. Tecnologie dell'informazione, dimensione dell'impresa e natura sistemica dei fenomeni organizzativi" pp. 20
- 438 Margherita Russo e Elena Pirani [2003] "Competition and cooperation in a metal engineering production system" pp. 27
- 439 Davide Ferrari e Antonio Ribba [2003] "Using an Evolving Criterion to Assess the Federal Reserve's Behavior in Recent Years" pp.14
- 440 Giuliano Muzzioli e Alberto Rinaldi [2003] "L'emergere di un'impresa leader distrettuale: il caso della Wam (1968-1990)" pp.31
- 441 Giuseppe Marotta [2003] "I principali strumenti della regolamentazione prudenziale bancaria: verso una discrezionalità eccessiva delle autorità?" pp. 33
- 442 Fernando Vianello [2003] "La Facoltà di Economia e Commercio di Modena nella prima fase della sua vita. Storia di un gruppo di economisti" pp. 28
- 443 Giuseppe Marotta [2003] "L'assetto istituzionale della regolamentazione prudenziale. Uno o più regolatori?" pp. 26
- 444 Giuseppe Marotta [2003] "L'instabilità bancaria: recenti sviluppi teorici ed empirici" pp. 35
- 445 Massimo Baldini e Paolo Silvestri [2003] "Redditi, benessere e disuguaglianza nella provincia di Modena" pp. 37
- 446 Sandra Paterlini e Thiemo Krink [2003] "Differential Evolution and Particle Swarm Optimization in Partitional Clustering" pp. 26
- 447 Silvia Muzzioli [2003] "A note on fuzzy linear systems" pp. 24
- 448 Vittorio Moriggia, Silvia Muzzioli e Costanza Torricelli [2003] "Option on Implied Trees when the Put Call Parity Is Not Fulfilled" pp. 22
- 449 Paola Bertolini e Sergio Paba [2003] "I lavoratori extracomunitari nella provincia di Modena: un'indagine sulle imprese associate all'API" pp. 47
- 450 Lucia De Bastiani e Giovanni Solinas [2003] "Informazione e trasferimento della tecnologia. Il rapporto tra Università e le imprese" pp.52
- 451 Massimo Baldini, Paolo Bosi, Maria Cecilia Guerra e Paolo Silvestri [2004] "Distribuzione del reddito e politiche fiscali in un contesto locale: il caso del comune di Modena" pp. 30
- 452 Paola Bertolini e Marco Montanari [2004] "The effects of Europe Agreement on EU-CEEC trade: an analysis by main sectors" pp. 17
- 453 Chiara Pederzoli e Costanza Torricelli [2004] "A forward-looking model for time-varying capital requirements and the New Basel Capital Accord" pp. 28
- 454 Paola Bertolini e Enrico Giovannetti [2004] "The Internationalisation of an Agri-food Cluster a Case Study" pp. 33
- 455 Paolo Bosi, Claudio De Vincenti e Alfonsina Rinaldi [2004] "Diritti di cittadinanza delle persone anziane non autosufficienti. Un contributo alla definizione dei Livelli Essenziali di Servizi per la Non Autosufficienza (LESNA)" pp. 161
- 456 Massimo Baldini, Paolo Bosi e Sara Colombini [2004] "Efficacia selettiva dell'Isse nell'erogazione di prestazioni sociali agevolate nella provincia di Modena. Un'analisi con il modello di microsimulazione MAPP02mo-Capp" pp. 67
- 457 Carla Fiori, Michele Lalla e Nicoletta Pacchiarotti [2004] "La preparazione degli studenti di Ingegneria e Economia dopo gli esami di matematica di base" pp. 49
- 458 Paola Bertolini, Barbara Pistoresi e Andrea Zaghi [2004] "Flussi migratori ed allargamento ad Est. Una riflessione sul caso italiano" pp. 39
- 459 Claudio Marra [2004] "La civilizzazione dei Barbari. La concezione integrazionista della socializzazione nel pensiero di Emile Durkheim e di Talcott Parson" pp. 103
- 460 Margherita Russo [2004] "Il distretto industriale della ceramica di fronte alla sfida cinese. Processi di innovazione e relazioni tra i diversi tipi di imprese dentro e fuori il distretto" pp.25
- 461 Stefano Bordoni [2004] "Strumenti e tecniche di Business Intelligence per applicazioni CRM" pp. 44
- 462 Enrico Nannini, Barbara Pistoresi, Federica Tagliuzocchi [2004] "L'internazionalizzazione nell'economia modenese: problemi strutturali e canali di finanziamento agevolato" pp. 96
- 463 Marcello D'Amato, Barbara Pistoresi, Francesco Salsano [2004] "The determinants of central bank independence"
- 464 Marina Murat, Sergio Paba [2004] "International migration, outsourcing, and Italian industrial districts." pp. 33
- 465 Marina Murat, Sergio Paba [2004] "Come cambiano le attività economiche e i distretti industriali. Un'analisi dell'andamento dell'occupazione tra i due Censimenti (1991-2001)." pp. 31
- 466 Giuseppe Marotta [2004] "La finanza del settore non profit e Basilea 2" pp. 16
- 467 Addabbo, T., Lanzi D. e Picchio A. [2004] "On Sustainable Human Development: Gender Auditing in a Capability Approach" pp.40
- 468 Tindara Addabbo, Maria Laura Di Tommaso e Gisella Facchinetti [2004] "To what extent fuzzy set theory and structural equation modelling can measure functionings? An application to child well being" pp. 28
- 469 Graziella Bertocchi [2004] "Growth, History and Institutions" pp. 20
- 470 Graziella Bertocchi e Chiara Strozzi [2004] "Citizenship Laws and International Migration in Historical Perspective" pp. 39
- 471 Marianne McGarry Wolf e Paola Bertolini [2004] "Attitudes toward Food and Biotechnology in the U.S., Japan, and Italy" pp. 18
- 472 Marianna Brunetti e Costanza Torricelli [2004] "The internal efficiency of Index Option Markets: Tests on the Italian Market" pp. 26

- 473 Alberto Rinaldi [2004] "Primi appunti per una storia della Federazione Provinciale Artigiani di Modena (1945-1961)" pp. 23
- 474 Tindara Addabbo, Antonella Caiumi e Ylenia Rovinalti [2004] "Mothers' employment probability and child care services" pp.
- 475 Tindara Addabbo e Massimo Baldini [2004] "Why is fertility so low in Italy? Some tentative replies from an affluent society" pp.
- 476 Anna Maria Sala [2004] "Sistema urbano e dinamiche insediative Una verifica empirica" pp
- 477 Paolo Bosi [2005] "Paradigmi economici e riforma del welfare nelle politiche europee" pp. 16
- 478 Claudio Marra [2005] "Percorsi, aspettative e valutazioni nell'esperienza lavorativa degli immigrati stranieri in Emilia Romagna: i casi di Modena e Reggio Emilia" pp 39
- 479 Paolo Bosi, M.Cecilia Guerra, Paolo Silvestri [2005] "Il finanziamento dei servizi per la non autosufficienza nel quadro della riforma del Titolo V." pp. 40
- 480 Scritti inediti di Tullio Aymone 1931-2002 [2005] Considerazioni su partecipazione politica e "sviluppo umano" nell'età della globalizzazione pp. 181
- 481 Scritti inediti di Tullio Aymone 1931-2002 [2005] "Un frammento autobiografico" pp.
- 482 Gianluca Di Lorenzo e Giuseppe Marotta [2005] "Una politica monetaria meno efficace con l'UME? Evidenza dal passthrough nei tassi d'interesse attivi" pp. 28
- 483 Margherita Russo e Elena Pirani [2005] "L'occupazione metalmeccanica nei sistemi di piccola e media impresa. Shift-share e specializzazioni 1981-2001" pp.
- 484 Margherita Russo e Elena Pirani [2005] "Le esportazioni metalmeccaniche dell'Italia. Shift-share e specializzazione sui dati provinciali (1991-2001)" pp.
- 485 Margherita Russo e Federica Rossi [2005] "Stimolare l'innovazione con strumenti innovativi: reti di partenariato e sviluppo locale nei programmi comunitari" pp. 32
- 486 Luigi Brighi e Reinhard John [2005] "A Hypothesis Guaranteeing the Weak Weak Axiom" pp. 11
- 487 Massimo Baldini e Luca Beltrametti [2005] "Modelli di finanziamento di un fondo pubblico per la non autosufficienza" pp. 26