




# Sardines at a junction: Seascape genomics reveals ecological and oceanographic drivers of variation in the NW Mediterranean Sea

Aglaia Antoniou<sup>1</sup>  | Tereza Manousaki<sup>1</sup>  | Francisco Ramírez<sup>2</sup> | Alessia Cariani<sup>3,4</sup>  | Rita Cannas<sup>5,4</sup> | Panagiotis Kasapidis<sup>1</sup> | Antonios Magoulas<sup>1</sup> | Marta Albo-Puigserver<sup>2,6</sup> | Elena Lloret-Lloret<sup>2</sup> | Jose Maria Bellido<sup>7</sup> | Maria Grazia Pennino<sup>8</sup> | Maria Cristina Follesa<sup>5,4</sup> | Antonio Esteban<sup>7</sup> | Claire Saraux<sup>9</sup> | Mario Sbrana<sup>10</sup> | Maria Teresa Spedicato<sup>11</sup> | Marta Coll<sup>2</sup> | Costas S. Tsigenopoulos<sup>1</sup>

<sup>1</sup>Institute of Marine Biology, Biotechnology and Aquaculture (IMBBC), Hellenic Centre for Marine Research (HCMR), Heraklion, Crete, Greece

<sup>2</sup>Institute of Marine Science (ICM-CSIC), Passeig Marítim de la Barceloneta, Barcelona, Spain

<sup>3</sup>Dept. Biological, Geological & Environmental Sciences (BiGeA), Alma Mater Studiorum – Università di Bologna, Ravenna, Italy

<sup>4</sup>Consorzio Nazionale Interuniversitario per le Scienze del Mare (CoNISMa), Rome, Italy

<sup>5</sup>Department of Life and Environmental Sciences, University of Cagliari, Cagliari, Italy

<sup>6</sup>Centro Oceanográfico de Baleares, Instituto Español de Oceanografía (COB-CNIEO/CSIC), Palma, Spain

<sup>7</sup>Centro Oceanográfico de Murcia, Instituto Español de Oceanografía, (COMU-CNIEO/CSIC), Murcia, Spain

<sup>8</sup>Centro Oceanográfico de Vigo, Instituto Español de Oceanografía (COVI-CNIEO/CSIC), Vigo, Pontevedra, Spain

<sup>9</sup>MARBECC, University of Montpellier, CNRS, IFREMER, IRD, Sète, France

<sup>10</sup>Consorzio per il Centro Interuniversitario di Biologia Marina ed Ecologia Applicata G, Livorno, Italy

<sup>11</sup>COISPA Tecnologia & Ricerca, Bari, Italy

## Correspondence

Aglaia Antoniou and Costas S. Tsigenopoulos, Institute of Marine Biology, Biotechnology and Aquaculture, Hellenic Centre for Marine Research, Gournes Padiados, Irakleio, Crete, Greece.  
Emails: [antoniou@hcmr.gr](mailto:antoniou@hcmr.gr);  
[tsigeno@hcmr.gr](mailto:tsigeno@hcmr.gr)

Marta Coll, Institute of Marine Science (ICM-CSIC), Passeig Marítim de la Barceloneta, Barcelona, Spain.  
Email: [mcoll@icm.csic.es](mailto:mcoll@icm.csic.es)

## Funding information

European Union's Horizon 2020, Grant/Award Number: FutureMARES grant agreement No 869300; Executive Agency for Small- and Medium-sized Enterprises (EASME) of the European Commission (DGMARE), Grant/Award Number: European Research Contract SPELMED (EASME/EMFF/201; Ministerio de Ciencia

## Abstract

By evaluating genetic variation across the entire genome, one can address existing questions in a novel way while raising new ones. The latter includes how different local environments influence adaptive and neutral genomic variation within and among populations, providing insights into local adaptation of natural populations and their responses to global change. Here, under a seascape genomic approach, ddRAD data of 4609 single nucleotide polymorphisms (SNPs) from 398 sardines (*Sardina pilchardus*) collected in 11 Mediterranean and one Atlantic site were generated. These were used along with oceanographic and ecological information to detect signals of adaptive divergence with gene flow across environmental gradients. The studied sardines constitute two clusters ( $F_{ST} = 0.07$ ), a pattern attributed to outlier loci, highlighting putative local adaptation. The trend in the number of days with sea surface temperature above 19°C, a critical threshold for successful sardine spawning, was crucial at all levels of population structuring with implications on the species' key biological

This is an open access article under the terms of the [Creative Commons Attribution](https://creativecommons.org/licenses/by/4.0/) License, which permits use, distribution and reproduction in any medium, provided the original work is properly cited.

© 2023 The Authors. *Molecular Ecology* published by John Wiley & Sons Ltd.

e Innovación, Grant/Award Number: RYC2020-030078-I; European Regional Development Fund

Handling Editor: Paul A. Hohenlohe

processes. Outliers link candidate SNPs to the region's environmental heterogeneity. Our findings provide evidence for a dynamic equilibrium in which population structure is maintained by physical and ecological factors under the opposing influences of migration and selection. This dynamic in a natural system warrants continuous monitoring under a seascape genomic approach that might benefit from a temporal and more detailed spatial dimension. Our results may contribute to complementary studies aimed at providing deeper insights into the mechanistic processes underlying population structuring. Those are key to understanding and predicting future changes and responses of this highly exploited species in the face of climate change.

#### KEYWORDS

climate change, ddRAD, outliers, population genomics, SNPs

## 1 | INTRODUCTION

Identifying genomic signatures of selection provides insights not only into the local adaptation of natural populations but also into their adaptive responses to global change (Carroll et al., 2014; Hauser & Carvalho, 2008; Heino et al., 2015). This can be better achieved through population genomic studies, by separating the effects of neutral processes (drift-migration) from those of selection, where frequency shifts point to rapid changes in environmental conditions (Hoffmann & Willi, 2008).

Modern genomic tools provide the means to assess the population structure of species at high resolution and gain a detailed view of their status (Greenbaum et al., 2019), supplying new means for examining the genetic basis of local adaptation (Price et al., 2020).

Combining state-of-the-art genomic approaches with spatially explicit information on the main habitat features allows linking genotypes to environmental variables, within the field of seascape genomics (Riginos et al., 2016). This enhances our understanding of the processes affecting inhabitant populations, including adaptive responses to environmental fluctuations reflecting either environmental heterogeneity or climate change (Selkoe et al., 2010), and providing valuable clues on how these populations cope with environmental change, in the face of ocean warming (Liggins et al., 2019).

The Mediterranean Sea has experienced a long history of over-exploitation with one of the world's highest percentage of stocks fished at unsustainable levels (FAO, 2020) and anthropogenic perturbations (Coll et al., 2012). It is strongly affected by pollution (García-Rivera et al., 2017; UNEP/MAP, 2015). In addition to the human-induced loss of habitat and biodiversity through direct exploitation (Coll et al., 2015), indirect effects such as climate change and Lessepsian migration/invasive species, pose additional threats that will probably increase in severity in the future (Pennino et al., 2020; Ramírez et al., 2017).

A shift towards sustainable fisheries in the Mediterranean Sea is more urgent than ever and requires robust fisheries and stock assessments, which means that biological and management units are aligned (Reiss et al., 2009; Vasilakopoulos et al., 2014). This is

intended to preserve stocks with adaptive diversity that can contribute to the long-term maintenance of productive fisheries and ecosystems (Antoniou & Magoulas, 2014).

Because of their commercial value and ecological role within marine communities, small pelagic fish are important species in the Mediterranean Sea (Coll et al., 2019; FAO, 2018; Palomera et al., 2007). Overall, declines of commercially important small pelagic fish populations, particularly of the European pilchard (*Sardina pilchardus*, (Walbaum, 1792); Clupeidae; Clupeiformes, hereafter sardine), have been observed in the Mediterranean Sea mostly attributed to the combined effects of climate impacts and fishing pressure (Coll et al., 2019; Pennino et al., 2020; Peristeraki et al., 2019; Ramírez et al., 2018, 2021; Saraux et al., 2019).

Highly mobile sardine, similarly to other clupeids, display localized batch spawning behaviour and migratory patterns that may result in restricted gene flow between populations and subsequent divergence (Bacha et al., 2014). This has already been demonstrated within the Mediterranean and to a lesser extent in the eastern Atlantic, mainly reflecting the levels of environmental heterogeneity of the two regions (Caballero-Huertas et al., 2022, and references therein; Ganias et al., 2004). The prevailing conditions are distinct in the two areas in terms of productivity, circulation patterns, wind events, water temperature, and biogeochemical and biological components but also topographic features that greatly impact the species' spatiotemporal variability in spawning (Ganias, 2009; Lima et al., 2022). Sardine spawning is temperature-dependent and conducted under a narrow range of temperatures (preferred range 12–14°C, also occurring up to 19°C) along their distribution range (Palomera et al., 2007), taking advantage of shelf upwelling systems with cold water and enhanced productivity, and under the influence of favourable winds that minimize offshore transport (Abdelouhab et al., 2021; Santos, Brito, et al., 2006; Santos, Ré, et al., 2006; Stratoudakis et al., 2007). Spawning is presumably triggered by decreasing water temperature in the autumn (<19°C) and completed as temperature increases again in the spring (Fernández-Corredor et al., 2021; Palomera et al., 2007; Stratoudakis et al., 2007). Multiple lines of evidence suggest a poleward migration and spawning habitat

shift as a response to rising temperatures (Alheit et al., 2012; Lima et al., 2022; Palomera et al., 2007). Genetic studies conducted on sardines in the Mediterranean employing different types of markers have mostly reported shallow phylogeographical structure, low genetic differentiation, and weak or absent population structure, with signs of late Pleistocene expansion (Kasapidis, 2014, and references therein). Significant genetic structure was only revealed in one particular locus and a microsatellite probably linked to it. The pattern observed coincided with a genetic cline tightly connected to the local thermal and hydrodynamic characteristics of the Atlantic–Mediterranean junction (Chlaida et al., 2009; Kasapidis et al., 2012; Laurent et al., 2007; Patarnello et al., 2007). Within the Mediterranean, the Almeria–Oran oceanographic front (AOF) is a sharp semipermanent boundary between surface water masses formed by the convergence of the Atlantic Ocean and the Mediterranean Sea. It is a key oceanographic feature, situated at the Northeastern Alboran Sea that separates the Mediterranean waters from northeastward inflow of Atlantic waters, reaching the Balearic Islands and forming a second density front in the northern part of the archipelago (Galarza et al., 2009). Its hydrological characteristics are closer to those of the Northeastern Atlantic than to the Western Mediterranean (Bacha et al., 2014), indicative of enhanced gene flow between the Alboran Sea and the Atlantic (Northeast and Moroccan Atlantic Ocean, Baibai et al., 2012). The AOF constitutes a barrier to sardine dispersal that could be held responsible for founder effects, followed by genetic drift with selection acting on the local scale driving adaptations mostly related to minimum sea surface temperature (Baltazar-Soares et al., 2021). The AOF as a barrier that separates the Atlantic and the Mediterranean is commonly observed in other fish species, such as *Sardinella aurita*, *Mugil cephalus* and *Xiphias gladius* (Borsa et al., 1997); *Merluccius merluccius* (Lundy et al., 1999); three sparid species, *Lithognathus mormyrus*, *Spondyliosoma cantharus* and *Dentex dentex* (Bargelloni et al., 2003); horse mackerel (*Trachurus trachurus*) populations (Abaunza et al., 2008) and *Dicentrarchus labrax* (Naciri et al., 1999).

Despite the wealth of previous studies, the role of multiple stressors in shaping the stock structure of sardines within the Mediterranean Sea remains elusive. This prohibits inferences of local adaptive variation and the potential of populations to respond to environmental changes, with implications for the conservation and sustainable management of this declining fish stock.

Spatial heterogeneity is expected to generate adaptive divergence by imposing challenges to the organisms inhabiting the area, further enhanced by changing environmental conditions (Grummer et al., 2019; Sandoval-Castillo & Beheregaray, 2020). The latter, and especially changes in sea surface temperature and the occurrence of winter upwelling events, have been held responsible for the recent decline of sardine recruitment (Santos et al., 2018) which in conjunction with spawning and larval behaviour constitute the main drivers of recruitment variability (Lowerre-Barbieri et al., 2017, and references therein).

Considering all the above, and given the fragmented information on sardine biology, ecology and evolution (Coll & Bellido, 2019),

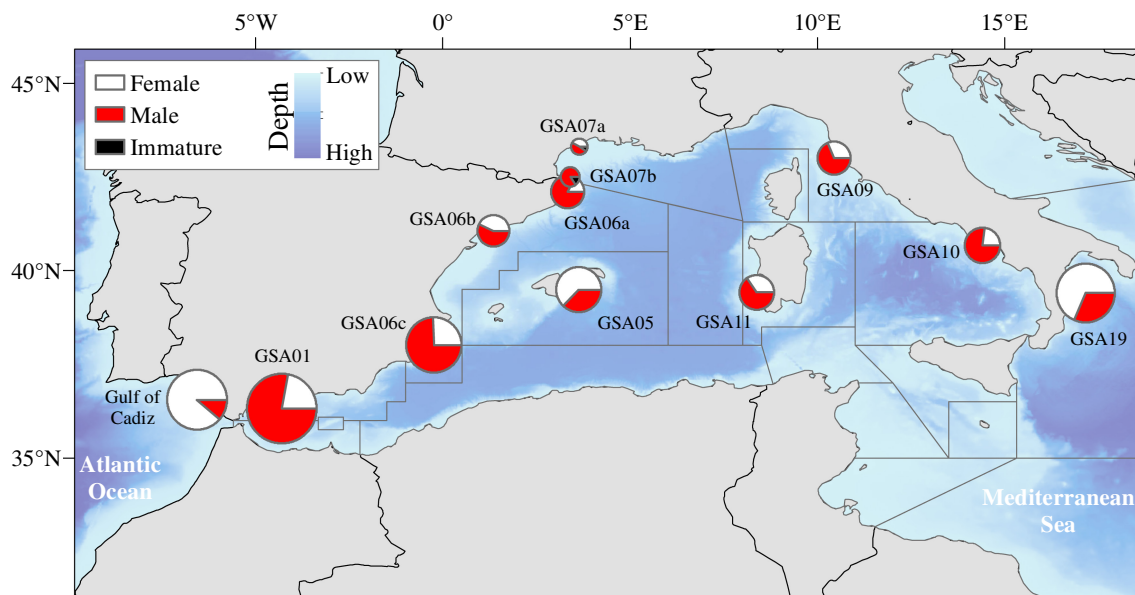
with this study we aim to provide a better understanding of the processes affecting sardine populations and to define environmental variables with high impact in shaping the species genomic patterns. Populations may show evident signatures of local adaptation regardless of gene flow (Diopere et al., 2018; Moody et al., 2015). Furthermore, adaptive variation is expected to be maintained in cases where the selection of locally adapted alleles is stronger than the influx of nonlocally adapted alleles (Bal et al., 2021). Given the above, we conducted an exploratory analysis aimed at finding the most relevant variables to the adaptive potential of sardine as well as to its susceptibility to climate change. By analysing genome-wide single nucleotide polymorphisms (SNPs) within a seascape genomics approach, we evaluated the influence of climatological ocean conditions and their trends, as well as landscape characteristics, biological components and exploitation based on different gear types, on the spatial patterns of population genetic structure across the environmentally heterogeneous region of the Central–Western Mediterranean and adjacent Atlantic waters. This set of variables includes well-established species-specific drivers and variables never tested before. Our approach enabled the assessment of the species population structure as well as genome–environment associations by disentangling the patterns of adaptive and neutral genetic variation. We further attempted to explain whether observed patterns in size and body condition, that is the north/south gradient in size and body condition observed in the Western Mediterranean (Albo-Puigserver et al., 2021; Bachiller et al., 2020; Brosset et al., 2017; Coll & Bellido, 2019), reflect random genetic processes and demography, or selection imposed by environmental forcing (both the biotic and abiotic attributes of the areas under study), or their combined effect.

The methodology and findings of this study can contribute to better understand processes shaping population differentiation and to evaluate the adaptive potential of species in response to environmental change. It is also anticipated to shed light on how the interplay between natural selection and gene flow affects local adaptation in this broadcast spawner, especially at times of increasing anthropogenic influence on the natural world (Flanagan et al., 2018).

## 2 | MATERIALS AND METHODS

### 2.1 | Sampling, DNA extraction, library construction and genotyping

Sardines were collected from 12 different locations across the Western and Central Mediterranean Sea, and the adjacent Atlantic waters (Figure 1), during scientific surveys (Mediterranean International bottom Trawl Survey, MEDITS; and Mediterranean International Acoustic Survey, MEDIAS) or commercial hauls in the period November 2017 – June 2018. A total of 398 fish (166 females, 220 males, six immatures and six n/a) were collected. Samples from two neighbouring Geographical Sub-Areas of the Mediterranean (GSA sites) showed differences with respect to fish total length and weight (Figure 1; Table S1).



**FIGURE 1** Geographical distribution of sampling sites. Colours in pies indicate the proportion of males, females and immatures captured, while pie size is proportional to mean length of sardines. Bathymetry of the studied area is also indicated with a gradient of blue colours with darker colours for deeper seas.

Genomic DNA was extracted from tissue samples and libraries were prepared following the double-digest restriction site-associated DNA (ddRAD) sequencing approach of Kess et al. (2016). Sequenced reads were analysed using STACKS version 2.4 pipeline (Catchen et al., 2013), to quality control the reads, identify the genomic loci sequenced, genotype each individual and conduct basic population genetic analyses against the genome of sardine (Louro et al., 2019). A detailed description on sampling, library construction and genotyping is provided in the Supporting Information.

## 2.2 | Population genetic analyses

Population genetic structure was assessed by both Bayesian and multivariate ordination methods. First, a model-based clustering was performed with STRUCTURE version 2.3.4 (Pritchard et al., 2000) under the correlated allele frequency model allowing admixture. In cases where  $K > 1$ , samples allocated to clusters with high membership coefficient ( $q \geq 0.9$ ) were further analysed with STRUCTURE for each cluster and with the same settings as above, in an attempt to examine whether further substructuring occurs.

Second, a discriminant analysis of principal components (DAPC) was performed with the ADEGENET version 2.1.1 package (Jombart, 2008), in the R environment (R Core Team, 2020) as a means to infer population subdivision of the samples under study, with an independent of population genetics model method (for a detailed description see Appendix S1).

Genetic diversity between the 12 sampling localities and the identified clusters was then compared in terms of observed ( $H_O$ ) and expected heterozygosity ( $H_E$ ), as a means of genetic differentiation using the STACKS population program. Furthermore, levels of

differentiation among localities and clusters were assessed by the fixation index  $F_{ST}$ , with statistical significance evaluated through 10,000 permutations with the software STRATAG R package (Archer et al., 2017), and  $p$  values were adjusted for multiple testing through false discovery rate (FDR) correction (Benjamini & Hochberg, 1995). A detailed description of the procedure followed is given in the Supporting Information.

## 2.3 | Seascape genomic analyses and outlier detection

### 2.3.1 | The data sets

Four types of genomic data sets were analysed to detect whether the different levels of population structure and the observed contrast in physical condition are driven by distinct environmental drivers. The first one included all studied samples (“all samples,” i.e. a data set that displayed population structure, see Results). The second and third data sets corresponded to the population clusters discovered in the studied area, that is the “Atlantic” [ATL] and “Mediterranean” [MED] clusters, respectively (Section 3). Finally, the fourth data set contained samples from northern and southern sampling sites of the Western Mediterranean Sea (“northern vs. southern sites,” i.e., GSA07a, GSA07b, GSA06a vs. GSA06c) that displayed remarkable differences in their physical condition, namely fish length and weight. This difference had a north/south gradient with larger and heavier sardines found in the southernmost areas (Table S1; Figure 1). Although those differences might be attributed to the sampling strategy itself (both time and gear employed for sampling), as well as the inclusion of six immature samples at the

northern sites, this seems less likely given that sampling was conducted during the same oceanographic surveys, and the consistency of such differences with recent studies reporting a similar trend in maximum size and body condition of sardine in the area (Albo-Puigserver et al., 2021; Bachiller et al., 2020; Brosset et al., 2017).

### 2.3.2 | Outlier detection with GINLAND, PCADAPT and RDA

Significant genotype–environment associations were inferred with GINLAND (Guillot et al., 2014). To minimize the occurrence of false positives, loci with a  $\log_{10}$  Bayes factor (logBF) of  $\geq 3$  were interpreted as having an outstanding statistical dependence with a certain environmental variable and therefore likely to belong to a genomic region under selection.

Environmental variables were selected considering evolutionary history, climate variability or change, and fishing activity as the dominant processes affecting small pelagic fish. Variables were selected to include all previously reported variables and their trends with significant impact on sardines, such as temperature (Garrido et al., 2017; Gordó-Vilaseca et al., 2021), salinity (Santos, Ré, et al., 2006) and hydrodynamics (for a review see Caballero-Huertas et al., 2022), as well as variables related to the biology of the species whose impact has never previously been assessed. Given that the impacts of climate change are a rather complex issue that refers to more than one parameter (e.g., an increase in temperature), we tested whether there are any environmental variables related to topography, hydrodynamics, and biochemical and biological components at different layers (i.e., surface, water column, bottom), different types of exploitation tools and food availability acting as selective agents in sardines of the Northwestern Mediterranean (Table 1; Table S2, see Supplementary Information for a detailed description). These were conducted under an exploratory framework to pinpoint significant factors shaping sardine genomic patterns that have previously been neglected, with subsequent implications for future directions of global change.

Outlier detection was also conducted by a principal component analysis (PCA)-based approach on individual genotype data using the PCADAPT R package (Luu et al., 2017) and by redundancy analysis (RDA) implemented in the R package VEGAN, which was employed as a multivariate method to detect environmental variables relevant for sardine as well as outlier loci (Oksanen et al., 2012). The RDA was conducted in two data sets with different levels of population structure. Multiple data sets were analysed given the not well-known performance of RDA in systems with increased levels of population structure or metapopulation dynamics (Forester et al., 2018). The two data sets included “all samples” and MED while for the remaining two the analysis was not possible due to the low number of sites that resulted in collinearity of all the environmental variables. Environmental covariates were selected to minimize collinearity among them using variance inflation factors ( $VIF < 10$ ). Significant constrained axes were identified using 999 permutations of the

response data and a  $p$ -value threshold of .05. We identified candidate adaptive loci as SNPs loading  $\pm 3$  SD from the mean loading of these significant RDA axes. We then identified the covariate most strongly correlated with each candidate SNP (i.e., highest correlation coefficient), to group candidates by potential driving environmental variables. Detailed information for this section is provided in the Supporting Information.

### 2.3.3 | Neutral and putatively adaptive genomic variation

To minimize the detection of false positives, SNPs that were selected by all methods (GINLAND, PCADAPT, RDA) were considered as outliers. Furthermore, the highest number of overlapping SNPs among pairs of methods was also considered indicative of the signal in our data and provided better insight into the acquired results. Similarly, a putative neutral SNP set included only SNPs that were not highlighted as outliers by any of the methods employed. This yielded two different sets of loci, namely putatively under selection and putatively neutral. The two sets of loci were analysed with STRUCTURE version 2.3.4 (Pritchard et al., 2000), using the same settings as above, in order to define whether different signals of population structure could be revealed.

### 2.3.4 | Outlier loci functional annotation

The two groups of outlier loci (i.e., selected by all methods and by the two methods with the highest number of overlapping loci) were further analysed to identify which of these loci were located within known genic regions and, for those found in intergenic regions, which is the closest gene using the genome annotation files (gff) from the sardine genome portal (<https://bioinformatics.psb.ugent.be/gdb/Spil/>). The protein sequences of the genes recovered were used in a BLASTP similarity search (e-value threshold  $10^{-8}$ ) against the swissprot database. To identify potential biological functions involved in the studied populations' response to environmental variables, a functional annotation analysis was conducted (for details see Supporting Information).

All computationally intensive analyses of the study were conducted at the IMBBC HPC facility (Zafeiropoulos et al., 2021).

## 3 | RESULTS

### 3.1 | ddRAD sequencing and data analysis

We sequenced one billion paired reads from 398 sardine individuals with an average of 2.5 million reads per individual. Mapping rate per individual ranged from 565,056 to 3,638,348, resulting in a comparable performance across samples. From the mapped reads, a catalogue with 275,864 loci was built covering 69 Mb out

TABLE 1 Environmental variables used in the present study, with their names, short description and general category.

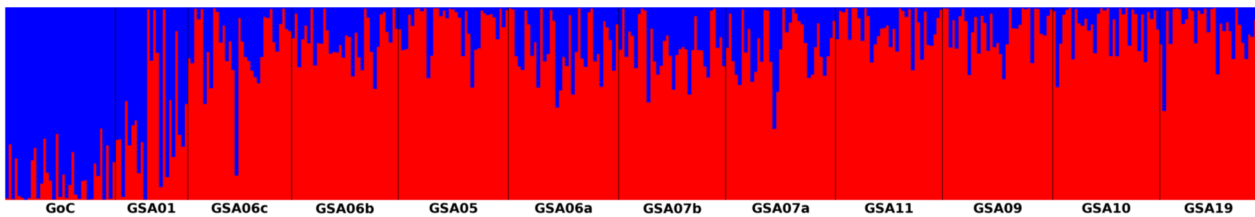
a/a	Variable_Name	Description	Categories	Source
1	bathymetry	Depth of the seafloor (m)	Topography	MARSPEC
2	biogeo01	East/west aspect (radians)	Topography	MARSPEC
3	biogeo02	North/south aspect (radians)	Topography	MARSPEC
4	biogeo03	Plan curvature	Topography	MARSPEC
5	biogeo04	Profile curvature	Topography	MARSPEC
6	biogeo05	Distance to shore (km)	Topography	MARSPEC
7	biogeo06	Bathymetric slope (degrees)	Topography	MARSPEC
8	biogeo07	Concavity (degrees)	Topography	MARSPEC
9	biogeo08	Mean annual SSS (psu)	Salinity	MARSPEC
10	biogeo09	SSS of the freshest month (psu)	Salinity	MARSPEC
11	biogeo10	SSS of the saltiest month (psu)	Salinity	MARSPEC
12	biogeo11	Annual range in SSS (psu)	Salinity	MARSPEC
13	biogeo12	Annual variance in SSS (psu)	Salinity	MARSPEC
14	biogeo13	Mean annual SST (°C)	Temperature	MARSPEC
15	biogeo14	SST of the coldest month (°C)	Temperature	MARSPEC
16	biogeo15	SST of the warmest month (°C)	Temperature	MARSPEC
17	biogeo16	Annual range in SST (°C)	Temperature	MARSPEC
18	biogeo17	Annual variance in SST (°C)	Temperature	MARSPEC
19	tot_impact	Total impact: a combination of the sst_tr26 and sst_tr19 products	Temperature	Ramírez et al. (2018, 2021)
20	sst_tr26	sst_trend_1982_2019: number of days with SST > 26°C threshold	Temperature	Ramírez et al. (2018, 2021)
21	sst_tr19	sst_trend_1982_2019: number of days with SST > 19°C threshold	Temperature	Ramírez et al. (2018, 2021)
22	sst_tr12	sst_trend_1982_2019: number of days with SST < 12°C	Temperature	Ramírez et al. (2018, 2021)
23	sst_min_sl	sst_min1982_2019_slopes: minimum annual SST	Temperature	Ramírez et al. (2018, 2021)
24	sst_m_slwi	sst_mean1982_2019_slopes_wint: mean annual SST during winter (January 1 to March 31)	Temperature	Ramírez et al. (2018, 2021)
25	sst_m_sl	sst_mean1982_2019_slopes: mean annual SST	Temperature	Ramírez et al. (2018, 2021)
26	sst_max_sl	sst_max1982_2019_slopes: maximum annual SST	Temperature	Ramírez et al. (2018, 2021)
27	fishing_ef	Fishing effort (Global Fishing Watch 2012–2016)	Human pressure	Ramírez et al. (2018, 2021)
28	PLD_60	Designation of distinct hydrodynamical provinces and connectivity through larval dispersal	Biology	Rossi et al. (2014)
29	Mesopelag	Biogeochemical mesopelagic regions	Biology	Reygondeau et al. (2017)
30	Bathypelag	Biogeochemical bathypelagic regions	Biology	Reygondeau et al. (2017)
31	EcoReg	Ecoregionalization, considering the biological components of the Mediterranean ecosystems	Biology	Reygondeau et al. (2014)
32	BioReg	biogeochemical epipelagic regions	Biology	Reygondeau et al. (2017)
33	ClusterCli	Phenology and interannual variability of surface chlorophyll concentration	Climatology	Mayot et al. (2016)
34	windspeed	Wind speed	Climatology	GMED
35	surcurrent	Surface current	Climatology	GMED
36	sst_mayoct	Summer temperature	Temperature	GMED
37	salinity	Salinity	Salinity	GMED
38	primprod	Primary productivity	Chemicals	GMED
39	parmean	PAR mean (photosynthetically active radiation)	Climatology	GMED

TABLE 1 (Continued)

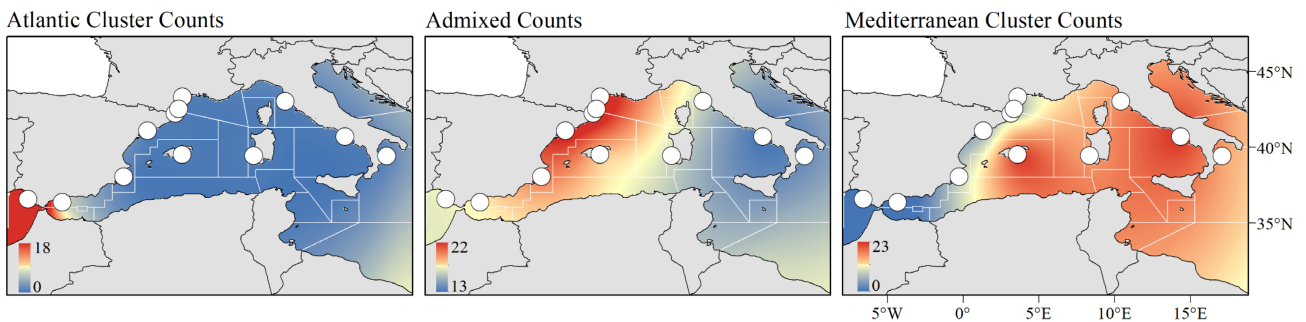
a/a	Variable_Name	Description	Categories	Source
40	o2saturate	Saturated oxygen	Chemicals	GMED
41	nitrate	Nitrate	Nutrients	GMED
42	calcite	Calcite	Nutrients	GMED
43	btemp	Water column temperature	Temperature	GMED
44	bsilicate	Bottom silicate	Nutrients	GMED
45	bphosphate	Bottom phosphate	Nutrients	GMED
46	bo2utilize	Bottom utilized oxygen	Nutrients	GMED
47	bo2dissolv	Bottom dissolved oxygen	Nutrients	GMED
48	bnitrate	Bottom nitrate	Nutrients	GMED
49	bedtemp	Seabed temperature	Temperature	GMED
50	Berline	Regionalization solely based on connectivity due to ocean currents	Climatology	Berline et al. (2014)
51	Raw_CluCli	Raw phenology and interannual variability of surface chlorophyll concentration	Climatology	Mayot et al. (2016)
52	FrontiersS	Synthesis congruence smoothed	Frontiers	Ayata et al. (2018)
53	Currents	Kinetic energy due to currents at the seabed in the Mediterranean Sea	Climatology	EMODNET
54	bo_ph	pH	Chemicals	GMED

Note: The layer source is also provided. Further detailed information can also be found in Table S2.

(a)



(b)



**FIGURE 2** Population structure of sardines in the Western Mediterranean Sea as inferred by STRUCTURE for  $K = 2$ . (a) Bar plot of individual  $q$ -values after CLUMPAK analysis (plot created with DISTRICT version 2.3, Chhatre, 2018; Raj et al., 2014), (b) Spatial interpolates (Krig interpolation in ARCGIS) of individual counts in the three assignment categories of STRUCTURE (i.e., individuals with  $q$ -values  $\geq 0.90$  in either Atlantic [ATL] or Mediterranean [MED] cluster and individuals with  $0.10 \leq q$ -value  $\leq 0.90$  "Admixed") per sampling site. Sites are identical to the locations and names given in Figure 1.

of the total 950Mb of the reference genome. After applying all filters to the SNP data set and selecting one SNP per locus, 4609 SNPs were retained and used for downstream analyses (provided as an additional VCF file).

### 3.2 | Assessing the population genetic structure

According to STRUCTURE, the optimal number of clusters that best fit the data was  $K = 2$  (with all ten replicates providing identical

clustering solutions). Samples with membership coefficients ( $q$ -values)  $\geq 0.9$  were assigned to either cluster with high confidence while samples with intermediate values were considered as admixed, that is having a mixed ancestry from the two clusters (Figure 2a). The first cluster, named "ATL" hereafter, included samples from only two sites, GoC and GSA01, while the second cluster included samples from all sampling sites except GoC, and thus named "MED" hereafter. Individuals of mixed ancestry were observed in all sampling sites with the highest numbers in sites GSA06a, GSA06b, GSA06c, GSA07a and GSA07b (Figure 2b). In the ATL cluster, 43 SNPs were monomorphic. The fixed alleles of each of the 43 SNPs in the ATL cluster were also present in the MED cluster at high frequency, ranging from 0.7547 to 0.8966. No monomorphic SNPs were observed in the MED cluster. No further substructuring (within clusters) was detected.

DAPC analysis indicated the occurrence of two clusters, grouping sardine individuals into two well-differentiated and partially overlapping genetic clusters (Figure 3).

The allocation of samples to two clusters was consistent between the two employed methods (i.e., STRUCTURE and DAPC). In the DAPC analysis, all samples were fully allocated (posterior membership probability,  $pp$ ,  $\geq 0.9$ ) to either cluster (DAPC\_ATL or DAPC\_MED) except one sample from GSA06a (sample id: 6a\_20, allocated to DAPC\_ATL with  $pp$ , 0.72). The allocation of samples to the two groups in DAPC analysis was identical to that of STRUCTURE with DAPC detecting fewer admixed individuals.

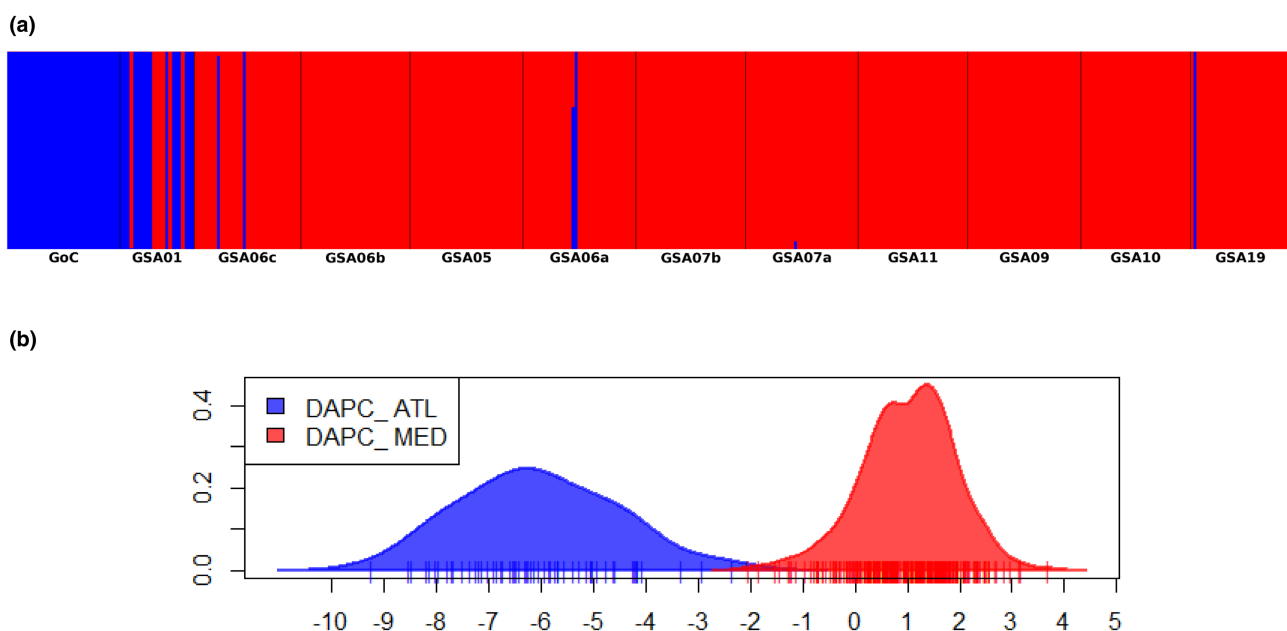
To detect adaptations of the two differentiated gene pools, as a strict measure of defining as pure clusters as possible, seascape genomic analyses were conducted based on STRUCTURE's allocation to

clusters (i.e., on the ATL and MED clusters), without taking into consideration the admixed samples.

Similar levels of observed and expected heterozygosity estimates over all loci were found across sampling sites ( $H_O = 0.266$ – $0.307$  and  $H_E = 0.266$ – $0.296$ ). The  $F_{ST}$  values among sites varied between 0 and 0.0485 (Table S3) with the highest values observed in comparisons involving the GoC site (0.0106–0.0485, all statistically significant) as well as GSA01 site comparisons (0.0105–0.0182, all statistically significant) with the rest of the sites. Furthermore, the  $F_{ST}$  value of the GoC site appeared to be closer to that of the GSA01 site ( $F_{ST} = 0.0106$ , statistically significant). The rest of the Mediterranean sampling sites (i.e., all Mediterranean sites except GSA01) had very low but significant  $F_{ST}$  values ranging from 0.0016 to 0.0043, while only among a few sites was  $F_{ST}$  zero. Following FDR correction, all (56) except one pairwise comparisons remained significant (i.e., GSA07a vs. GSA09,  $FDR = 1/(1+56) = 0.017$ ). Finally, the observed and expected heterozygosity estimates over all loci for the two clusters detected by STRUCTURE were  $H_O$  0.279 and  $H_E$  0.304 for the ATL cluster, and  $H_O$  0.282 and  $H_E$  0.316 for the MED cluster. The  $F_{ST}$  value between the two clusters was 0.0703, statistically significant ( $p = .0001$ ) and the highest estimated.

### 3.3 | Seascape genomic analyses

The overlapping outliers among all three methods were five, with RDA analysis conducted in only two out of the four data sets. The highest number of overlapping outlier loci was that between GINLAND and PCADAPT that reached 196 and included the five loci that



**FIGURE 3** Results of the DAPC analysis. (a) Bar plot of individual posterior membership probability values for  $K = 2$  as indicated by BIC (plot created with DISTRICT version 2.3, Chhatre, 2018; Raj et al., 2014), and (b) density plot of the distribution of each cluster on the discriminant axis. In blue, the cluster that mostly contains samples from the Atlantic (similar to ATL cluster of STRUCTURE analyses) and in red, the cluster that mostly contains samples from the Mediterranean (similar to MED cluster of STRUCTURE analyses).

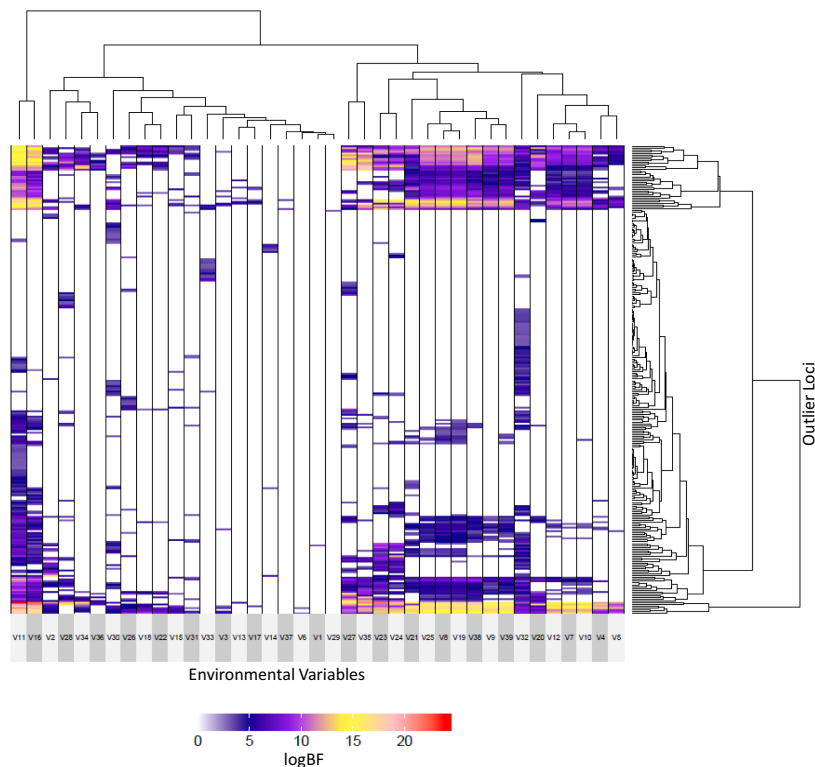


overlapped among all employed methods. GINLAND and RDA shared six loci while PCADAPT and RDA had 28 loci in common (Figure S1). Across data sets with all levels of population structure (i.e., “all samples” data set that displayed population structure, and ATL and MED data sets at the lower level of population structure), there were no outlier loci in common when GINLAND was used. By contrast, when PCADAPT was used, a core of 33 loci was shared among the three data sets. The two data sets analysed with RDA shared 14 loci (Figure S1).

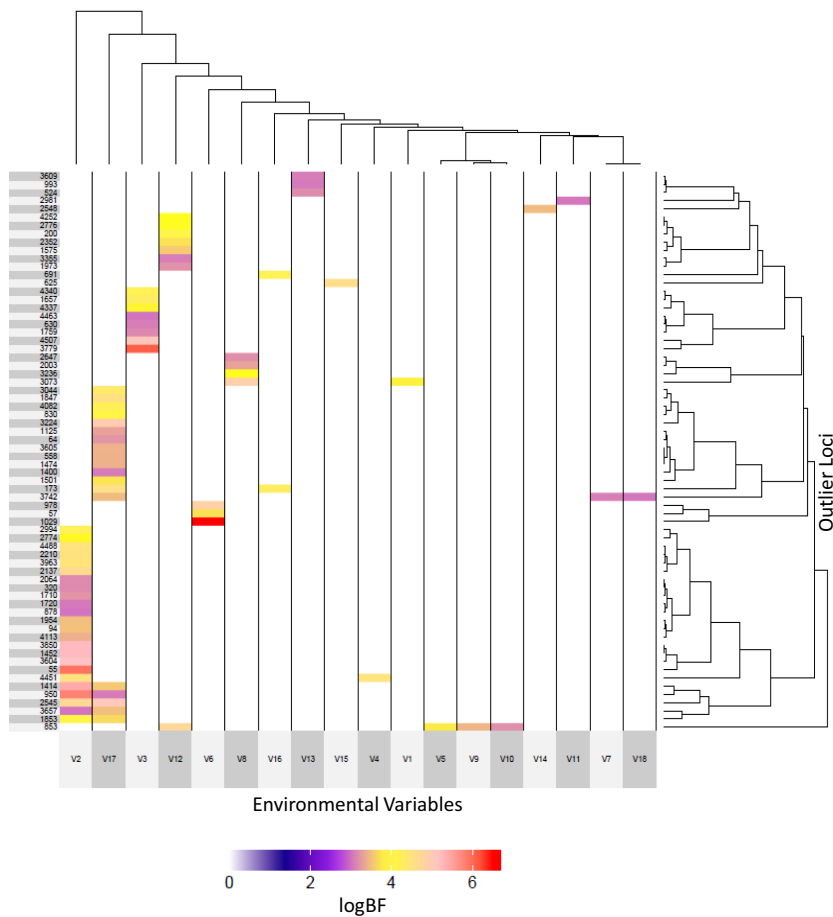
In the “all samples” data set, GINLAND detected 262 outlier loci with  $\log\text{BF} > 3$ , indicative of strong evidence of selection (Kass & Raftery, 1995). These outlier loci were associated with 39 environmental variables with none of them related to topography or fishing effort. Three groups of loci exhibited shared patterns of association across multiple environmental variables (Figure 4) and lacked variables related to salinity. The highest number of loci were invoked by three variables, namely surface current (surcurrent), nitrate and long-term linear regression of mean annual sea surface temperature (SST) ( $\text{sst\_m\_sl}$ ; see Table S4). For the same data set, PCADAPT detected 462 outlier loci, with 186 of those also detected by GINLAND (common outliers). For the same data set, the RDA model was significant ( $p = .001$ ), performed with nine environmental variables ( $\text{sst\_tr19}$ ,

Currents, surcurrent, nitrate,  $\text{sst\_max\_sl}$ ,  $\text{sst\_tr12}$ , FrontiersS, fishing\_ef, biogeo03) all being statistically significant while explaining only 3.35% of the observed genomic variance (adjusted  $R^2: .011$ ). Nitrate (20.6) and  $\text{sst\_tr19}$  (20.6) explained most of the variation, while the remaining parameters explained similar percentages of variation (13.2–18). There were four significant RDA axes, which returned 125 unique candidate loci (92 SNPs on RDA axis 1, 14 on RDA axis 2, three on RDA axis 3 and 16 on RDA axis 4). The detected SNPs displayed shared patterns of association across multiple environmental variables. Individual genotypes from the ATL and GSA01 sites were positively related to nitrate, plan curvature and photosynthetically active radiation (parmean) respectively. Furthermore, a distinction of northern (GSA07a, GSA07b, GSA06a) versus southern sites (GDS06c) was evident with a positive relationship with the number of days with SST  $< 12^\circ\text{C}$  ( $\text{sst\_tr12}$ ) and with maximum annual SST ( $\text{sst\_max\_sl}$ ) respectively (Figure 8a,b).

Analysing the MED data set with GINLAND yielded 68 outliers with  $\log\text{BF} > 3$  in 18 environmental variables. The highlighted variables included all categories except those related to topography and fishing effort. Shared patterns of association across variables involved only a few loci while four environmental variables invoked the majority of



**FIGURE 4** Correlation of GINLAND outlier single nucleotide polymorphisms (SNPs) with environmental variables as a signature of selection in the “all samples” data set. Hierarchical clustering of significant (i.e.,  $\log\text{BF}$  values  $\geq 3$ ) outlier SNPs (in rows) and environmental variables (in columns). Environmental variables in columns correspond to V1: PLD\_60, V2: Mesopelag, V3: Bathypelag, V4: EcoReg, V5: BioReg, V6: primprod, V7: o2saturate, V8: bo\_ph, V9: ClusterCli, V10: windspeed, V11: surcurrent, V12: parmean, V13: Raw\_CluCli, V14: Currents, V15: FrontiersS, V16: nitrate, V17: calcite, V18: bsilicate, V19: bphosphate, V20: bo2utilize, V21: bo2dissolv, V22: bnitrate, V23: biogeo10, V24: biogeo08, V25: salinity, V26: tot\_impact, V27:  $\text{sst\_tr26}$ , V28:  $\text{sst\_tr19}$ , V29:  $\text{sst\_tr12}$ , V30:  $\text{sst\_min\_sl}$ , V31:  $\text{sst\_m\_slwi}$ , V32:  $\text{sst\_m\_sl}$ , V33:  $\text{sst\_max\_sl}$ , V34: biogeo17, V35: biogeo16, V36: biogeo15, V37: biogeo14, V38:  $\text{sst\_mayoct}$ , V39: bedtemp. For a full reference to the variables see Table S2.



**FIGURE 5** Correlation of GINLAND outlier single nucleotide polymorphisms (SNPs) with environmental variables as a signature of selection in the MED cluster. Hierarchical clustering of significant (i.e.,  $\log_{10}BF$  values  $\geq 3$ ) outlier SNPs (in rows) and environmental variables (in columns). Numbers in rows indicate the locus that bears the outlier SNP while the environmental variables in columns correspond to V1: BioReg, V2: bo\_ph, V3: surcurrent, V4: parmean, V5: Currents, V6: FrontiersS, V7: nitrate, V8: bphosphate, V9: bo2utilize, V10: bo2dissolv, V11: salinity, V12: tot\_impact, V13: sst\_tr26, V14: sst\_tr19, V15: sst\_tr12, V16: sst\_min\_sl, V17: sst\_max\_sl, V18: btemp. For a full reference to the variables see [Table S2](#).

the loci in four distinct clusters respectively ([Figure 5](#)). These were pH (bo\_ph), surface current (surcurrent), long-term linear regression of maximum annual SST (sst\_max\_sl) and the combined effect of the number of days with SST  $> 19$  and  $26^{\circ}\text{C}$  (tot\_impact). For the same data set, PCADAPT detected 209 loci of which eight were common with GINLAND's loci. The RDA model on 11 environmental variables (sst\_tr19, Currents, surcurrent, nitrate, sst\_max\_sl, sst\_tr12, salinity, BioReg, FrontiersS, fishing\_ef, biogeo03) was significant ( $p = .002$ ) with four variables being statistically significant (sst\_tr19, nitrate, sst\_tr12 and salinity, explaining similar levels of variation 31.5–32.4) while explaining only 6.64% of the observed genomic variance (adjusted  $R^2: .0024$ ). Individual genotypes from GSA07b were positively related to the number of days with SST  $> 19^{\circ}\text{C}$  (sst\_tr19). Genotypes from GSA11 were positively related with the number of days with SST  $< 12^{\circ}\text{C}$  (sst\_tr12), while genotypes from GSA10 were negatively related to nitrate. Finally, on the third RDA axis a positive relationship of GSA05 and GSA19 haplotypes with salinity was observed ([Figure 8c,d](#)). The single significant RDA axis in the ordination of the MED data set returned 23 unique candidate loci displaying shared patterns of association across multiple environmental variables. In the ATL data set, GINLAND detected 37 outlier loci with  $\log_{10}BF > 3$  in 24 environmental variables. In this data set, GINLAND highlighted variables related to topography covarying with SNP data. A group of loci exhibited shared patterns of association across the majority of environmental variables, including those related to topography

([Figure 6](#)). PCADAPT analysis detected 957 loci for the same data set, of which five were common with GINLAND's list of outlier loci.

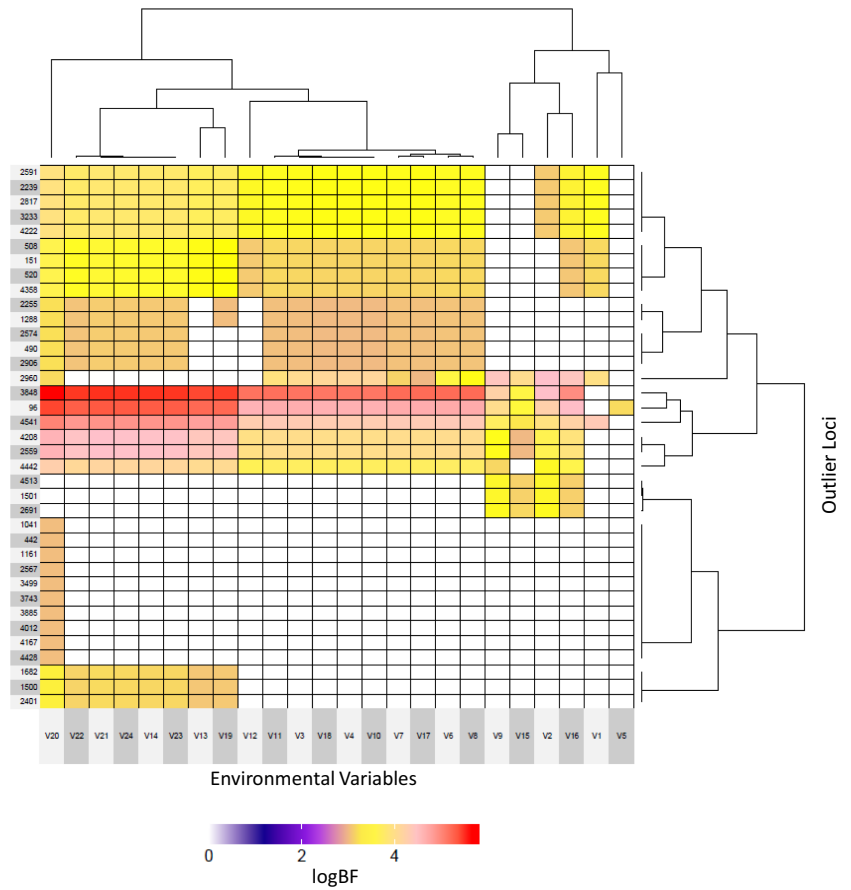
The “northern vs. southern” data set yielded 45 outlier loci with  $\log_{10}BF > 3$  in GINLAND analysis, involving seven environmental variables. One variable (i.e., sst\_max\_sl) displayed correlation with most of the highlighted SNPs (23 SNPs). The next most important variables in terms of the number of highlighted loci were cum\_impact†, sst\_tr19 and tot\_impact ([Figure 7](#)). One SNP was found to covary with clim\_impact†. PCADAPT for the same data set detected 218 outliers, three of which in common with GINLAND.

Common outliers among employed approaches and data sets are depicted in [Figure S1](#). A more detailed description of the results is provided in the Supporting Information.

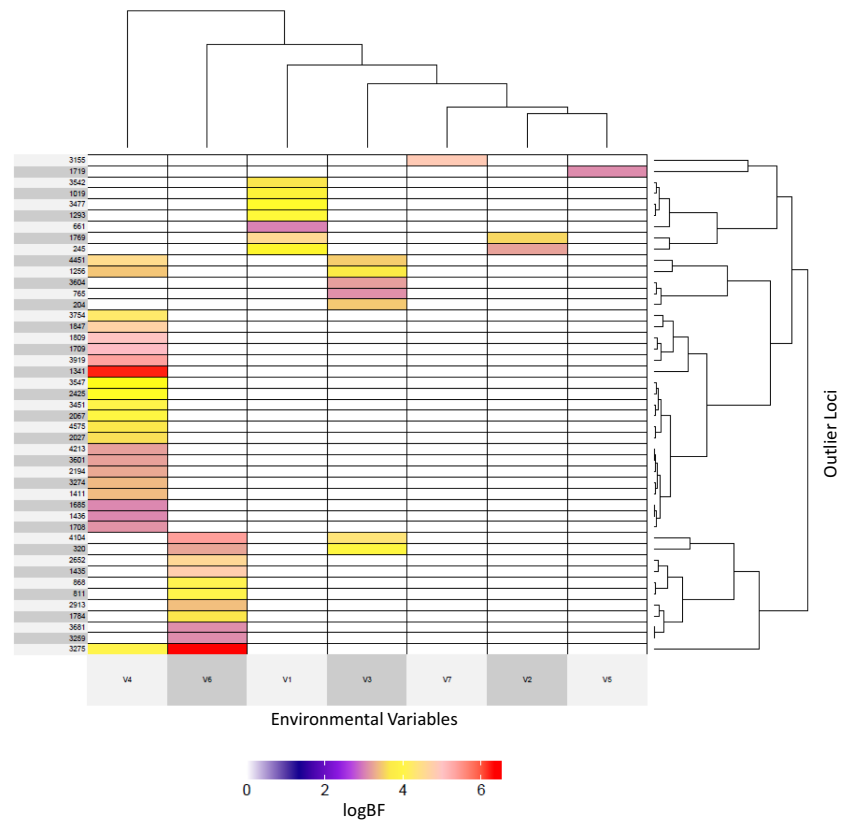
Overall, from all examined data sets and all employed methods (i.e., GINLAND, RDA and PCADAPT), 1607 SNPs were highlighted as potential outliers. Almost all environmental variables used in this study correlated with at least one SNP and up to 156 (see [Table S4](#)). Four variables that did not correlate with any of the SNPs in any of the data sets were: bathymetry, biogeo01, biogeo13 and Berline's regionalization. Only variable, sst\_tr19, was correlated with SNPs of all four data sets.

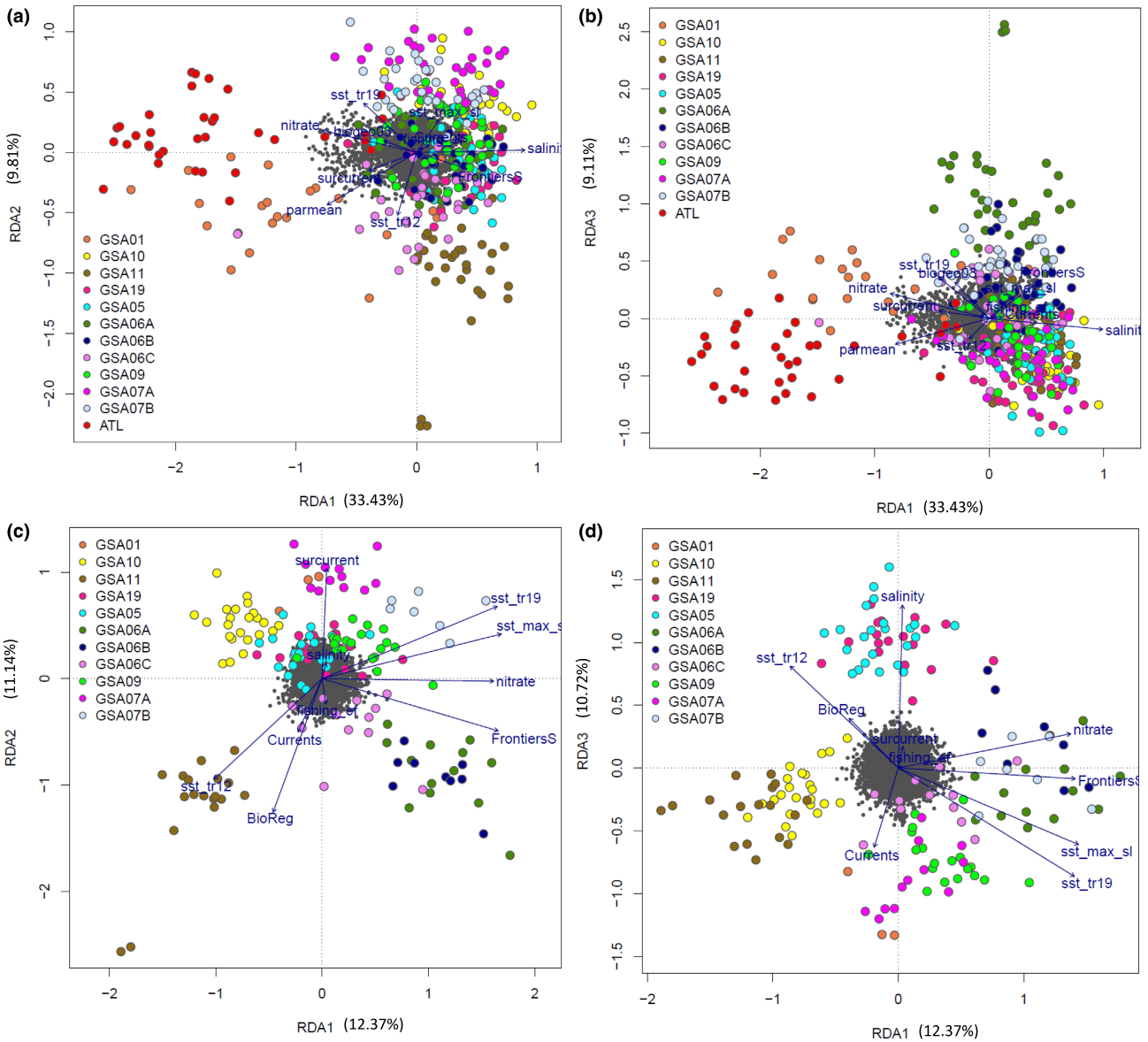
Regarding GINLAND results, eight variables correlated with SNPs in all data sets except the one comparing northern versus southern sites. Those variables are related to currents (Currents, surcurrent) and nutrients (nitrate, bphosphate, bo2utilize, bo2dissolv,

**FIGURE 6** Correlation of GINLAND outlier single nucleotide polymorphisms (SNPs) with environmental variables as a signature of selection in the ATL cluster. Hierarchical clustering of significant (i.e.,  $\log_{BF}$  values  $\geq 3$ ) outlier SNPs (in rows) and environmental variables (in columns). Numbers in rows indicate the locus that bears the outlier SNP while the environmental variables in columns correspond to V1: o2saturate, V2: bo\_ph, V3: windspeed, V4: surcurrent, V5: parmean, V6: Currents, V7: nitrate, V8: bsilicate, V9: bphosphate, V10: bo2utilize, V11: bo2dissolv, V12: bnitrate, V13: biogeo12, V14: biogeo11, V15: sst\_tr19, V16: sst\_mayoct, V17: btemp, V18: bedtemp, V19: biogeo02, V20: biogeo03, V21: biogeo06, V22: biogeo05, V23: biogeo07, V24: biogeo04. For a full reference to the variables see [Table S2](#).



**FIGURE 7** Correlation of GINLAND outlier single nucleotide polymorphisms (SNPs) with environmental variables as a signature of selection in the “northern vs. southern sites” data set. Hierarchical clustering of significant (i.e.,  $\log_{BF}$  values  $\geq 3$ ) outlier SNPs (in rows) and environmental variables (in columns). Numbers in rows indicate the locus that bears the outlier SNP while the environmental variables in columns correspond to V1: tot\_impact, V2: sst\_tr26, V3: sst\_tr19, V4: sst\_max\_sl, V5: biogeo09, V6: Cli\_impact, V7: Cum\_impact. For a full reference to the variables see [Table S2](#).





**FIGURE 8** Triplots of the “all samples” data set for RDA axes 1 and 2 (a), and RDA axes 1 and 3 (b). Triplots of the MED data set for RDA axes 1 and 2 (c), and RDA axes 1 and 3 (d). The dark grey cloud of points at the centre of each plot represents the SNPs. The coloured points represent individual sardines with coding by sampling site. Blue vectors represent environmental predictors (see Table 1 for abbreviations).

parmean, bo\_pH). The variables shared among the data set that contained all samples and the MED data set were mostly related to temperature (tot\_impact, sst\_tr26, sst\_max\_sl, sst\_tr12, sst\_min\_sl), as well as salinity (salinity), Reygondeaus' epipelagic biogeochemical regions and FrontiersS. Water column temperature (btemp) was a shared environmental variable among MED and ATL data sets though none of the correlated SNPs were in common.

Some variables were exclusively highlighted in particular data sets when GINLAND was used. For the data set including all samples these were mostly related to temperature (sst\_m\_slwi, sst\_m\_sl, biogeo17, biogeo16, biogeo15, biogeo14), biology (PLD\_60, Mesopelag and Bathypelag, EcoReg), climatology (Raw\_CluCli, ClusterCli), salinity (biogeo10, biogeo08), primary productivity (primpod) and nutrients (calcite). When RDA was conducted with all samples, two

environmental variables, not indicated for the same data set by GINLAND, were highlighted, namely fishing effort (fishing\_ef) and plan curvature (biogeo03). For the MED data set, RDA environmental variables overlapped with those indicated by GINLAND. The ATL data set exclusively contained topography-related variables (biogeo02, biogeo03 [but see also RDA with the “all samples” data set], biogeo06, biogeo05, biogeo07, biogeo04) as well as two variables related to salinity (biogeo12, biogeo11). Finally, the data set comparing northern vs. southern sites exclusively correlated with sea surface salinity (SSS) of the freshest month (biogeo09).

Population structure analyses on GINLAND and PCADAPT common outliers ( $n = 196$ , including the 5 common SNPs by all methods) estimated  $K = 2$  clusters and allocated the samples to the MED and ATL clusters as with the complete loci data set. By contrast,

when using only the neutral set of loci (i.e., 3002 loci [deducting 1607 outliers from the total 4609 loci]), no signal of population structure was detected.

### 3.4 | Functional annotation

Out of the five outlier loci in common through all approaches, four were found in scaffolds with genes in their vicinity: Heterogeneous nuclear ribonucleoprotein A1 (hnRNP A1), G protein-activated inward rectifier potassium channel 2 (GIRK-2), Myosin regulatory light chain 2, ventricular/cardiac muscle isoform (MLC-2) and Transmembrane protein 178B. Functional annotation analyses of the 196 outlier loci highlighted in any of the data sets by GINLAND and PCADAPT approaches revealed that 156 are located within scaffolds that contain predicted genes. Few of them (i.e., 12) were found within genic regions while for the rest the closest gene was identified (top BLAST hit per gene is given in Table S5). Ten loci were located within the same gene with the rest being quite distant (Table S5). Gene Ontology (GO) terms were retrieved for 140 of these genes (Figure S2).

See also Appendix S1 for a detailed description of the Results.

## 4 | DISCUSSION

### 4.1 | Understanding the population structure of sardines

The present study indicates the existence of two clearly differentiated gene pools of sardines that meet in the Western Mediterranean (i.e., ATL and MED clusters). The results of population structure analysis tools (i.e., STRUCTURE and DAPC) were consistent despite their methodological differences, indicative of the strong signal in our data. The two clusters are geographically well defined, in agreement with the geographical distribution of the two sardine subspecies recognized by morphological and molecular characters (Atarhouch et al., 2007; Fonseca et al., 2021; Parrish et al., 1989). Admixed individuals are found throughout the Mediterranean sampling sites, with the AOF having a transition role between the two regions, in agreement with previous studies (e.g., Atarhouch et al., 2007).

Gene flow probably occurs from the Atlantic to the Mediterranean since in the GoC only ATL and admixed individuals (not MED) were found, while ATL individuals were also found within the westernmost MED site (i.e., GSA01 in the Alboran Sea). This was also supported by the  $F_{ST}$  index, with the highest values observed among the Atlantic and the Mediterranean sites except GSA01, with the latter being closer to GoC and displaying intermediate values when the Mediterranean sites were considered. Additionally, the number of admixed individuals decreased towards the edges of the east–west axis, namely towards central Mediterranean and the Atlantic respectively (Figure 2b).

Our results suggest that the AOF acts as the actual barrier separating the Atlantic and the Mediterranean sardines allowing for some interaction as reported in previous studies (Santos et al., 2018, and references therein). This pattern coincides with that observed in other fish species (e.g. Abauza et al., 2008; Bargelloni et al., 2003; Borsa et al., 1997; Duranton et al., 2018, 2020; Naciri et al., 1999; Patarnello et al., 2007). Within the Mediterranean, it was not possible to detect any substructure corresponding to that well described for various species of the Tunisian–Siculo barrier (Duranton et al., 2018; López-Márquez et al., 2021). This might be due to the inclusion of only one site from the Central Mediterranean (GSA19) and the lack of sites from the Eastern Mediterranean and/or to the semipermeability of the aforementioned barrier (e.g., as in *Gibbula divaricata*; López-Márquez et al., 2021).

The two clusters could be detected even with the use of only 196 outlier SNPs linking candidate SNPs to the region's environmental heterogeneity, as seen in other sardine species (Teske et al., 2021). In contrast, when only putatively neutral SNPs were used (i.e., 3002 SNPs), detection of any pattern of population structure failed, suggesting that natural selection and local adaptation play a key role in driving genetic change (Metivier et al., 2017) among the Atlantic and the Mediterranean Sea. This was further corroborated by the fact that different outlier SNPs were highlighted in the data sets where population structure was present vs. the unstructured data sets (i.e., all vs. ATL, MED clusters) and the slight overlap detected by PCADAPT (33 SNPs) and RDA (14 SNPs) across data sets (Figure S1).

### 4.2 | Seascape genomics provides insights into the main environmental conditions affecting the evolution of sardines

Water temperature and derived environmental products indicating changing temperature conditions were highlighted as extremely important variables driving natural selection and local adaptation of sardines in the study area. The trend in the number of days with SST above 19°C was the sole environmental variable highlighted in all data sets. This is indicative of the extreme conditions experienced by the species within the past few years (as in European sea bass, Anastasiadi et al., 2021), impacting its reproduction (Palomera et al., 2007) and spawning success potential (Gordó-Vilaseca et al., 2021). This variable is critical for the reproduction of sardines in the Western Mediterranean Sea, where spawning starts when water temperature falls below 19°C (Palomera et al., 2007) and salinity is over a threshold (~25 PSU, Lima et al., 2022). Furthermore, temperature could be a proxy of other variables, namely of coastal upwelling strength (e.g., Zelle et al., 2004), and therefore larval dispersal (Gordó-Vilaseca et al., 2021), as well as recruitment success (Garrido et al., 2017; Gordó-Vilaseca et al., 2021; Solari et al., 2010). The impact of SST on sardine abundance has been demonstrated in California as well,

debunking previous hypotheses of competitive exclusion with anchovies as the driving factor in population size for both species (Sugihara et al., 2012).

Apart from SST, nutrient availability, sea currents and temperature velocity of change were important variables for the differentiation and local adaptation of Atlantic and Mediterranean clusters. This was evident given that those variables were the most important in all but one data set (northern vs. southern sites data sets). These variables are expected to mostly affect early life stages, which are particularly vulnerable to environmental variability, and thus the strength of recruitment. In sardines, such environmental forcing acting upon the egg and larval stages has already been demonstrated (Garrido et al., 2017), where recruitment strength is affected by differences in the prevailing environmental conditions in the studied areas. In the main recruitment hotspots of the species in Atlantic-Iberian waters, high recruitment years have been associated with high chlorophyll-*a* (Chl*a*) concentration (as an indicator of food availability) and low SST (reflecting the optimal range for larval development) during periods of sardine larvae development (Garrido et al., 2017; Gordó-Vilaseca et al., 2021). Temperature and food availability also affect the intensity of reproduction and quality of the eggs produced (Garrido & van der Lingen, 2014).

The approaches employed identify different numbers of outlier loci with few of them in common. This is frequently observed (Gagnaire et al., 2015) and might be attributed to their susceptibility to detect adaptation. The low or zero overlap in outliers identified in the different data sets could be indicative of the effect of the underlying population structure on the detection of genomic regions under selection. Finally, although RDAs were conducted on only half of the data sets and using subsets of environmental variables of those used in GINLAND, the highlighted environmental variables were highly consistent. Nevertheless, a direct comparison of the relevant environmental variables for the biology and evolution of sardines as well as the outlier loci detected by the two methods is not possible.

### 4.3 | The genomic profile of the outlier loci

Functional annotation analyses of the outlier-associated gene set revealed that the genes are linked to key biological processes associated with environmental pressures (Figure S2). It is worth noting that the retrieved top GO categories (e.g., cellular process, metabolism, biological regulation and response to stimulus) have been reported in other studies that measure transcriptomic responses under experimentally induced heat stress (e.g., Huang et al., 2018, 2020; Li et al., 2021). Those findings reflect a similar functional profile of the mechanisms selected during sardines' adaptation to sea warming.

Reproduction and sex determination are the main processes greatly impacted by temperature in fish (Vandeputte et al., 2020). Among others, our gene data set included the proteins Gametogenetin-binding protein 2, AT-rich interactive domain-containing protein 4B, Myosin-7 and Thioredoxin reductase 3, all involved in the process of spermatogenesis, and Cilia- and

flagella-associated protein 52 involved in sperm mobility, reflecting a possible impact of the significant environmental parameters of our analysis to sardine reproduction. Another key process that seems to be highly impacted is muscle formation which has been described as being affected by temperature (Balbuena-Pecino et al., 2019; Georgakopoulou et al., 2010), including one of the genes found as an outlier in all analyses conducted herein (i.e., Myosin regulatory light chain 2) as well as others (paxilin involved in response to muscle stretch, triadin involved in regulation of cardiac muscle cell, etc.).

Finally, our gene set included genes involved in the response to nitrate availability: Carbamoyl-phosphate synthetase I involved in nitrogen compound metabolic process and Atrial natriuretic peptide receptor three involved in positive regulation of nitric-oxide synthase activity. Interestingly, the latter is also involved in regulation of cold-induced thermogenesis, suggesting a link among the two processes.

Overall, the genomic profile of the data set of the 196 outlier loci (which included the five loci that overlapped by all methods) suggests that selective pressures are acting on multiple fronts with an emphasis on "binding," impacting a plethora of biological processes that involve interaction with the environment. However, although assigning function to putatively adaptive SNPs can be an important step for verifying their biological relevance, especially in the light of an available reference genome as in our case, it can be misleading, allowing for limitless interpretations (Pavlidis et al., 2012). Regardless, confirmation of the functional and adaptive significance of loci requires rigorous gene expression or selection experiments, respectively (Pardo-Diaz et al., 2015).

### 4.4 | Sardines from the Mediterranean and the Atlantic respond differently to environmental pressures

Two data sets (i.e., all samples and ATL cluster data sets) displayed shared patterns of association of individual SNPs with the majority of environmental variables. Loci showing multiple environmental associations were found in the same loci cluster using hierarchical clustering, with these clusters representing proxies for functional modules (Kess et al., 2020; Lotterhos et al., 2018). Such modular genetic architectures are favoured when adapting to climate on a landscape scale (Kliebenstein, 2011) where complex spatial and temporal environments with both abiotic and biotic challenges occur at different spatial scales (Le Nagard et al., 2011), as well as when multiple traits are under a combination of directional (among populations) and stabilizing (within populations) selection (Griswold, 2006; Le Corre & Kremer, 2003; Wagner & Altenberg, 1996). Such modularity can be beneficial not only for facilitating evolvability in response to a variable environment (Edwards & Weing, 2011), but also by allowing the system to function as a set of independent groups of genes, allowing a species to better sample its potential phenotypic and genotypic diversity (Leroi, 2000). Sardines undoubtedly face spatially and temporarily complex environments within and between the two

areas (i.e., Mediterranean Sea and Atlantic Ocean). Whether sardines possess phenotypic and genomic characteristics that could be indicative of directional and stabilizing selection among and within populations, respectively, demands more data and testing. Current data and analyses favour a hypothesis of among-population directional selection in sardines (i.e., as indicated by the 43 SNPs, which appear monomorphic in the Atlantic cluster, and with high frequency of the fixed allele in the Mediterranean cluster). However, given that our sampling scheme includes only one site from the Atlantic, no firm conclusion can be drawn.

For the Mediterranean cluster, high-temperature-related variables are of primary importance, probably reflecting the pressures of climate change and/or variability acting within the Western Mediterranean that directly affect sardines' body condition, reproduction and larvae survival (Albo-Puigserver et al., 2021; Garrido et al., 2016). The same holds for the northern vs. southern sites data set in the Western Mediterranean (Albo-Puigserver et al., 2021; Coll & Bellido, 2019; Pennino et al., 2020), while the correlation of a locus to the SSS of the freshest month might be indicative of the influence of the lower salinity levels to the species' reproduction, especially in areas of river runoffs such as GSA07 (Palomera et al., 2007).

The Atlantic cluster seems to be mostly affected by the seascape and especially plan curvature, as indicated by both GINLAND and RDA analyses, probably reflecting adaptations to its habitat which is different from that within the Mediterranean. An extensive body of water such as the Eastern Atlantic displays fewer physical barriers associated with coastal relief (Santos et al., 2018), and with bottom topography that impacts its oceanographic elements such as currents, gyres, upwelling and oceanic fronts (Castelao & Luo, 2018). A significant relationship between the extent of the potential sardine habitat, larval food availability (defined by depth, SST and Chla) and sardine recruitment has already been found in the Atlantic coasts off Morocco (Machu et al., 2009). It was suggested that years of low recruitment occurred when the optimal spawning period in terms of temperature and salinity did not coincide with periods of high food availability. However, further investigations over wider geographical areas in the Atlantic Ocean are necessary to draw firm conclusions on the main physical, biological or environmental drivers of the genetic variability in the Atlantic cluster.

Sardines commonly occur in highly productive areas of enhanced food availability. In the Atlantic Ocean, these major feeding areas are largely associated with upwelling offshore systems (Checkley et al., 2017). In general, the offshore occurrence of sardines in the Atlantic Ocean has been held responsible for their larger size with respect to other small pelagic fishes (i.e., anchovies), but also for their longer migrations and lower levels of population structure (Checkley et al., 2017). In contrast, marine productivity and highly productive marine areas in the Mediterranean Sea are largely driven by river discharges (e.g., Feuilloley et al., 2020). Sardines stay closer to the coastline and feed in areas directly influenced by river runoff (Costalago et al., 2015). Based on these lines of evidence, we hypothesize that the larger size of the individuals of the ATL cluster might be due to its adaptation to wander in offshore areas. An indication of

the distinct selective pressures acting on the different hierarchical clustering levels is provided by almost zero overlap in the lists of loci across the different data sets (i.e., zero overlap in GINLAND, 33 loci in PCADAPT and 14 loci in RDA across the data sets, Figure S1).

#### 4.5 | Is fishing effort driving the adaptation of sardines?

Covariation of SNPs with variables reflecting fishing effort was observed in the cumulative impacts variable, that is cum\_impact† (Ramírez et al., 2018, 2021), where climate impacts on sardine biomass and spawning are combined with fishing effort footprint (GINLAND analysis), as well as in fishing effort (fishing\_ef, when RDA was employed). Such findings agree with multiple lines of evidence where fishing may alter fluctuations in sardine stocks, but may not be the primary source of change (Checkley et al., 2017; Coll et al., 2019; Saraux et al., 2019) and the fact that environmental parameters (ICES, 2015) and in particular temperature and food are essential factors for sardines in general. Unarguably, fishing effort is affecting sardine stocks and might become detrimental to their sustainability (Ramírez et al., 2018, 2021). It has been the main reason why elderly age classes have been wiped out from particular areas (Albo-Puigserver et al., 2021; Coll & Bellido, 2019), the maximum age of sardines in the Mediterranean not exceeding 5 years. From a genomics perspective, whether sardine primary control in the Mediterranean is bottom-up (i.e., climate variability) rather than top-down (i.e., fishing) remains to be fully assessed, with our results pointing to a probable combination of factors affecting the population dynamics of sardine.

#### 4.6 | Is the north/south gradient solely affected by the environment or does it have a heritable basis?

In RDA, the distinction of northern from southern sites was evident in terms of the number of days with SST < 12°C (sst\_tr12) and the maximum annual SST (sst\_max\_sl), respectively (Figure 8a,b). Additionally, genotypes from GSA07b were positively related to the number of days with SST > 19°C threshold (sst\_tr19) when analysing the MED data set. Similarly, based on GINLAND analyses key variables are related to high temperature velocity of change (sst\_max\_sl) and sea surface salinity (SSS) of the freshest month (biogeo09), indicating that reproduction and survival are important forces acting on sardines in the area. The only variables that reflected northern poorness to southern richness were mean PAR (photosynthetically active radiation) and bottom nitrate, which have been found to vary on a seasonal basis (Zhao & Costello, 2019). Nevertheless, not strictly looking into the seasonal variation of the environmental variables with time (we only looked at average values for the period May–October approximating the conditions prior to the species' reproductive season, Gordó-Vilaseca et al., 2021) inevitably disregards any seasonal/

temporal changes occurring as well as their spatial extent, with the role of seasonality remaining to be further assessed in future studies.

According to Van Beveren et al. (2014), the recent decrease in the abundance of small pelagic fishes in the Gulf of Lions was related to slower growth and the disappearance of older individuals rather than to a decrease in recruitment strength or overfishing. The authors proposed that the current decline in sardine biomass could be due to qualitative and/or quantitative modifications in planktonic production (i.e., a bottom-up control) or mass mortalities of adults due to an epidemic disease (Van Beveren et al., 2014). This is further supported by the findings of recent studies where the decrease in body condition was not related to selective processes (Saraux et al., 2019), with spatial–seasonal factors at local scales being pivotal (Lloret-Lloret et al., 2022). It has also been observed that the spatial differences in the feeding ecology of adult sardines might affect their lipid composition, and also the fatty acid reserves transferred to their progeny (Garrido et al., 2007, 2008), with direct implications for their condition. Such phenotypic differences are not always in line with observed genetic divergence, as in the case of sardines off Moroccan coasts (Atarhouch et al., 2006, 2007), which were also attributed to responses to local environmental variables. Unfortunately, the quality of the food was not directly included in our analysis due to the lack of suitable variables and no conclusions on this can be drawn.

Overall, our observed responses to local environments comply with the environmental conditions prevailing in those areas and their deterioration (Ramírez et al., 2021). According to the marine regionalization of Zhao and Costello (2019), there are extreme changes in PAR, waves and wind in the northern sites (i.e., GSA07a, GSA07b and GSA06a) during winter (December–February) but high PAR during summer (June–August) at the southern sites with consequent effects on productivity and temperature, especially during the reproductive period. The above, coupled with rapid changes in temperature (Ramírez et al., 2018, 2021), could be held responsible for such differences in physical conditions between the north and the south that might be reinforced by periods of lower connectivity with areas subject to milder pressures of extreme environmental variability and where healthier fish are found, such as the GSA06c sampling site (as in Hidalgo et al., 2019). These intensively fluctuating conditions constrain species either to tolerate such variation, adjust their activity, growth and reproduction in response to seasons, or evolve into distinct biogeographical assemblages (Zhao & Costello, 2019).

## 4.7 | Conclusions

Insights into the main environmental parameters that drive local adaptation and adaptive responses to changes were gained under a seascape genomics approach separating the signals of neutral and putative adaptive variation. The results obtained are not only relevant for the biology of the species, but also for understanding

natural, as well as human-induced, evolutionary processes. They can assist planning of an adapted fisheries management in this area by predicting future trajectories of biodiversity and setting conservation priorities. Despite admixture between the two groups (i.e., MED and ATL), their discrete management will maintain locally adapted groups, enhancing their sustainability. Our findings provide evidence for a dynamic equilibrium in which population structure is maintained by physical and/or biological (including predation and behaviour) factors under the opposing influences of migration and selection. Drastic changes may occur in such dynamic systems that require continuous monitoring under a seascape genomics approach. Including a temporal as well as a more detailed spatial dimension will be beneficial. This study can offer valuable information for sustainable species management, providing important clues on the definition and delineation of stocks and their potential to adapt. Furthermore, it may assist the prediction of the evolutionary responses to ongoing and future climate change scenarios. Finally, our results may further contribute to studies aimed at providing deeper insights into the mechanistic processes underlying population structuring of sardines; this is a key step for understanding and predicting future changes and responses by this highly exploited species in the face of climate change.

## AUTHOR CONTRIBUTIONS

A.A. performed population genetic and seascape genomic analyses and wrote the paper, T.M. carried out bioinformatic analysis on SNP calling, population genetics and functional annotation and wrote the paper, F.R. produced environmental layers and wrote the paper, A.C., R.C., P.K., A.M., M.A.-P., E.LI-LI., J.M.B., M.G.P., M. F., A.E., C.S., M.S. and M.T.S. provided their expertise and commented on the paper while A.C., R.C., M.A.-P., E.LI-LI., J.M.B., M.G.P., M.C.F., A.E., C.S., M.S. and M.T.S. were also responsible for sample collection; M.C. and C.S.T. conceived and supervised the study and wrote the paper. All authors approved the final version of the paper.

## ACKNOWLEDGEMENTS

The authors acknowledge the MEDITS and MEDIAS oceanographic campaigns and the biological sampling programme of the Data Collection Framework for collecting samples. D. A. Jadaud is acknowledged for her help collecting samples from the MEDITS GSA07 survey (<http://www.medias-project.eu/medias/website/>, <https://doi.org/10.18142/7>). This study was carried out within the European Research Contract SPELMED (EASME/EMFF/2016/032) funded by the Executive Agency for Small- and Medium-sized Enterprises (EASME) of the European Commission (DGMARE). The information and views set out in this publication are those of the author(s) and do not necessarily reflect the official opinion of the European Commission and EASME. Neither EASME nor the European Commission can guarantee the accuracy of the data included in this publication. Neither EASME nor the European Commission or any person acting on the EASME's or on the European Commission's behalf may be held responsible for the use which may be made of the information contained therein.



MC would like to acknowledge partial funding from the European Union's Horizon 2020 research and innovation programme under grant agreement No. 869300 (FutureMARES). MC and FR acknowledge the institutional support of the "Severo Ochoa Centre of Excellence" accreditation (CEX2019-000928-S). FR was supported by the Ramón y Cajal programme (Spanish Ministerio de Ciencia e Innovación, RYC2020-030078-I). This research was supported in part through computational resources provided by IMBBC (Institute of Marine Biology, Biotechnology and Aquaculture) of the HCMR (Hellenic Centre for Marine Research). Funding for establishing the IMBBC HPC has been received from the MARBIGEN (EU Regpot) project, LifeWatchGreece RI and the CMBR (Centre for the study and sustainable exploitation of Marine Biological Resources) RI, implemented under the Action "Reinforcement of the Research and Innovation Infrastructure," funded by the Operational Programme "Competitiveness, Entrepreneurship and Innovation" (NSRF 2014-2020) and cofinanced by Greece and the European Union (European Regional Development Fund).

## CONFLICT OF INTEREST

The authors declare no conflicts of interest.

## DATA AVAILABILITY STATEMENT

Raw reads have been deposited to European Nucleotide Archive (ENA) under the accession id PRJEB45992. A VCF file with all filtered and unlinked SNPs used in the analyses of this study is provided as an additional file.

## ORCID

Aglaia Antoniou  <https://orcid.org/0000-0003-1119-9820>

Tereza Manousaki  <https://orcid.org/0000-0001-7518-0542>

Alessia Cariani  <https://orcid.org/0000-0002-5513-0086>

## REFERENCES

- Abauza, P., Murta, A. G., Campbell, N., Cimmaruta, R., Comesaña, A. S., Dahle, G., García, S. M., Gordo, L. S., Iversen, S. A., MacKenzie, K., Magoulas, A., Mattiucci, S., Molloy, J., Nascetti, G., Pintob, A. L., Quinta, R., Ramos, P., Sanjuan, A., Santos, A. T., ... Zimmermann, C. (2008). Stock identity of horse mackerel (*Trachurus trachurus*) in the Northeast Atlantic and Mediterranean Sea: Integrating the results from different stock identification approaches. *Fisheries Research*, 89, 196–209. <https://doi.org/10.1016/j.fishres.2007.09.022>
- Abdelouahab, H., Berraho, A., Baibai, T., Larissi, J., Charib, S., Agouzouk, A., Makaoui, A., Ettahiri, O., & Errhif, A. (2021). Long term variation of sardine *Sardina pilchardus* spawning along the Atlantic coast of Northwest Africa (21–26° N): Characterization and spatiotemporal variability in spawning habitat. *Oceanologia*, 63(1), 1–11. <https://doi.org/10.1016/J.OCEANO.2020.08.006>
- Albo-Puigserver, M., Pennino, M. G., Bellido, J. M., Colmenero, A. I., Giráldez, A., Hidalgo, M., Ramírez, J. G., Steenbeek, J., Torres, P., Cousido-Rocha, M., & Coll, M. (2021). Changes in life history traits of small pelagic fish in the Western Mediterranean Sea. *Frontiers in Marine Science*, 8, 1197. <https://doi.org/10.3389/FMARS.2021.570354/BIBTEX>
- Alheit, J., Pohlmann, T., Casini, M., Greve, W., Hinrichs, R., Mathis, M., O'Driscoll, K., Vorberg, R., Wagner, C., & Wagner, C. (2012). Climate variability drives anchovies and sardines into the north and Baltic seas. *Progress in Oceanography*, 96(1), 128–139. <https://doi.org/10.1016/J.POCEAN.2011.11.015>
- Anastasiadi, D., Shao, C., Chen, S., & Piferrer, F. (2021). Footprints of global change in marine life: Inferring past environment based on DNA methylation and gene expression marks. *Molecular Ecology*, 30(3), 747–760. <https://doi.org/10.1111/mec.15764>
- Antoniu, A., & Magoulas, A. (2014). Application of mitochondrial DNA in stock identification. In S. X. Cadrin, L. A. Kerr, & S. Mariani (Eds.), *Stock Identification Methods: Applications in Fishery Science: Second Edition* (pp. 257–295). Academic Press. <https://doi.org/10.1016/B978-0-12-397003-9.00013-8>
- Archer, F. I., Adams, P. E., & Schneiders, B. B. (2017). Stratag: An R package for manipulating, summarizing and analysing population genetic data. *Molecular Ecology Resources*, 17(1), 5–11. <https://doi.org/10.1111/1755-0998.12559>
- Atarhouch, T., Rami, M., Naciri, M., & Dakkak, A. (2007). Genetic population structure of sardine (*Sardina pilchardus*) off Morocco detected with intron polymorphism (EPIC-PCR). *Marine Biology*, 150(3), 521–528. <https://doi.org/10.1007/s00227-006-0371-8>
- Atarhouch, T., Rüber, L., Gonzalez, E. G., Albert, E. M., Rami, M., Dakkak, A., & Zardoya, R. (2006). Signature of an early genetic bottleneck in a population of Moroccan sardines (*Sardina pilchardus*). *Molecular Phylogenetics and Evolution*, 39(2), 373–383. <https://doi.org/10.1016/j.ympev.2005.08.003>
- Bacha, M., Jemaa, S., Hamitouche, A., Rabhi, K., & Amara, R. (2014). Ocean : Evidence from otolith shape analysis. *ICES Journal of Marine Science*, 71, 2429–2435. <http://icesjms.oxfordjournals.org/content/71/9/2429.full.pdf+html>
- Bachiller, E., Albo-Puigserver, M., Giménez, J., Pennino, M. G., Marí-Mena, N., Esteban, A., Lloret-Lloret, E., Jadaud, A., Carro, B., Bellido, J. M., & Coll, M. (2020). A trophic latitudinal gradient revealed in anchovy and sardine from the Western Mediterranean Sea using a multi-proxy approach. *Scientific Reports*, 10(1), 1–18. <https://doi.org/10.1038/s41598-020-74602-y>
- Baibai, T., Oukhattar, L., Quinteiro, J. V., Mesfioui, A., Rey-Mendez, M., & Soukri, A. (2012). First global approach: Morphological and biological variability in a genetically homogeneous population of the European pilchard, *Sardina pilchardus* (Walbaum, 1792) in the North Atlantic coast. *Reviews in fish biology and fisheries*, 22, 63–80. <https://doi.org/10.1007/s11160-011-9223-9>
- Bal, T. M. P., Llanos-Garrido, A., Chaturvedi, A., Verdonck, I., Hellemans, B., & Raeymaekers, J. A. M. (2021). Adaptive divergence under gene flow along an environmental gradient in two coexisting stickleback species. *Genes*, 12(3), 435. <https://doi.org/10.3390/genes12030435>
- Balbuena-Pecino, S., Riera-Heredia, N., Vélez, E. J., Gutiérrez, J., Navarro, I., Riera-Codina, M., & Capilla, E. (2019). Temperature affects musculoskeletal development and muscle lipid metabolism of Gilthead Sea bream (*Sparus aurata*). *Frontiers in Endocrinology*, 10, 173. <https://doi.org/10.3389/fendo.2019.00173>
- Baltazar-Souares, M., Lima, A. R. d. A., & Silva, G. (2021). Targeted sequencing of mitochondrial genes reveals signatures of molecular adaptation in a nearly panmictic small pelagic fish species. *Genes*, 12(1), 1–17. <https://doi.org/10.3390/genes12010091>
- Bargelloni, L., Alarcon, J. A., Alvarez, M. C., Penzo, E., Magoulas, A., Reis, C., & Patarnello, T. (2003). Discord in the family Sparidae (Teleostei): Divergent phylogeographical patterns across the Atlantic-Mediterranean divide. *Journal of Evolutionary Biology*, 16(6), 1149–1158. <https://doi.org/10.1046/j.1420-9101.2003.00620.x>
- Benjamini, Y., & Hochberg, Y. (1995). Controlling the false discovery rate: A practical and powerful approach to multiple testing. *Source: Journal of the Royal Statistical Society. Series B (Methodological)*, 57(1), 289–300.
- Borsa, P., Naciri, M., Bahri, L., Chikhi, L., Garcia de Leon, F., J., Kotoulas, G., & Bonhomme, F. (1997). Intraspecific zoogeography

- of the Mediterranean: Population genetic analysis on sixteen Atlanto-Mediterranean species (fishes and invertebrates). *Zoogeographie Infra-Specifique de La Mer Mediterranee: Analyse Des Donnees Genetiques Populationnelles Sur Seize Especies Atlanto-Mediterraneennes (Poissons et Invertebres) Vie et Milieu*, 47(4), 295–305 <http://www.scopus.com/inward/record.url?eid=2-s2.0-0031403021&partnerID=40&md5=84cd00d266e65a028ccbf3c537e40b88>
- Brosset, P., Fromentin, J. M., Van Beveren, E., Lloret, J., Marques, V., Basilone, G., Bonanno, A., Carpi, P., Donato, F., Čičeš Keč, V., De Felice, A., Ferreri, R., Gašparevič, D., Giráldez, A., Gücü, A., Iglesias, M., Leonori, I., Palomera, I., Somarakis, S., ... Saraux, C. (2017). Spatio-temporal patterns and environmental controls of small pelagic fish body condition from contrasted Mediterranean areas. *Progress in Oceanography*, 151, 149–162. <https://doi.org/10.1016/j.pcean.2016.12.002>
- Caballero-Huertas, M., Frigola-Tepe, X., Coll, M., Muñoz, M., & Viñas, J. (2022). The current knowledge status of the genetic population structure of the European sardine (*Sardina pilchardus*): Uncertainties to be solved for an appropriate fishery management. *Reviews in Fish Biology and Fisheries*, 32, 745–763. <https://doi.org/10.1007/s11160-022-09704-z>
- Carroll, S. P., Jørgensen, P. S., Kinnison, M. T., Bergstrom, C. T., Denison, R. F., Gluckman, P., Smith, T. B., Strauss, S., & Tabashnik, B. E. (2014). Applying evolutionary biology to address global challenges. *Science*, 346(6207), 1245993. <https://doi.org/10.1126/science.1245993>
- Castelao, R. M., & Luo, H. (2018). Upwelling jet separation in the California current system. *Scientific Reports*, 8(1), 1–8. <https://doi.org/10.1038/s41598-018-34401-y>
- Catchen, J., Hohenlohe, P. A., Bassham, S., Amores, A., & Cresko, W. A. (2013). Stacks: An analysis tool set for population genomics. *Molecular Ecology*, 22(11), 3124–3140. <https://doi.org/10.1111/mec.12354>
- Checkley, D. M., Asch, R. G., & Rykaczewski, R. R. (2017). Climate, anchovy, and sardine. *Annual Review of Marine Science*, 9(1), 469–493. <https://doi.org/10.1146/annurev-marine-122414-033819>
- Chhatre, E. V. (2018). Distruct v2.3, A modified cluster membership plotting script. Retrieved from <http://distruct2.popgen.org>
- Chlaida, M., Laurent, V., Kifani, S., Benazzou, T., Jaziri, H., & Planes, S. (2009). Evidence of a genetic cline for *Sardina pilchardus* along the northwest African coast. *ICES Journal of Marine Science*, 66(2), 264–271. <https://doi.org/10.1093/icesjms/fsn206>
- Coll, M., Albo-Puigserver, M., Navarro, J., Palomera, I., & Dambacher, J. M. (2019). Who is to blame? Plausible pressures on small pelagic fish population changes in the northwestern Mediterranean Sea. *Marine Ecology Progress Series*, 617, 277–294. <https://doi.org/10.3354/meps12591>
- Coll, M., & Bellido, J. (2019). Evaluation of the population status and specific management alternatives for the small pelagic fish stocks in the Northwestern Mediterranean Sea (SPELMED)—Final Report SC NR 02-TENDER EASME/EMFF/2016/32 – SPELMED. Retrieved from <https://op.europa.eu/en/publication-detail/-/publication/f1bd2c63-084e-11eb-a511-01aa75ed71a1>
- Coll, M., Piroddi, C., Albouy, C., Ben Rais Lasram, F., Cheung, W. W. L., Christensen, V., Karpouzi, V. S., Guilhaumon, F., Mouillot, D., Paleczny, M., Palomares, M. L., Steenbeek, J., Trujillo, P., Watson, R., & Pauly, D. (2012). The Mediterranean Sea under siege: Spatial overlap between marine biodiversity, cumulative threats and marine reserves. *Global Ecology and Biogeography*, 21(4), 465–480. <https://doi.org/10.1111/j.1466-8238.2011.00697.x>
- Coll, M., Steenbeek, J., Ben Rais Lasram, F., Mouillot, D., & Cury, P. (2015). 'Low-hanging fruit' for conservation of marine vertebrate species at risk in the Mediterranean Sea. *Global Ecology and Biogeography*, 24(2), 226–239. <https://doi.org/10.1111/geb.12250>
- Costalago, D., Garrido, S., & Palomera, I. (2015). Comparison of the feeding apparatus and diet of European sardines *Sardina pilchardus* of Atlantic and Mediterranean waters: Ecological implications. *Journal of Fish Biology*, 86(4), 1348–1362. <https://doi.org/10.1111/jfb.12645>
- Diopere, E., Vandamme, S. G., Hablützel, P. I., Cariani, A., Van Houdt, J., Rijnsdorp, A., Tinti, F., Consortium, F. P. T., FAM, V., ... Maes, G. E. (2018). Seascape genetics of a flatfish reveals local selection under high levels of gene flow. *ICES Journal of Marine Science*, 75(2), 675–689. <https://doi.org/10.1093/icesjms/fsx160>
- Duranton, M., Allal, F., Fraïsse, C., Bierne, N., Bonhomme, F., & Gagnaire, P. A. (2018). The origin and remolding of genomic islands of differentiation in the European sea bass. *Nature Communications* 2018 9:1, 9(1), 1–11. <https://doi.org/10.1038/s41467-018-04963-6>
- Duranton, M., Allal, F., Valière, S., Bouchez, O., Bonhomme, F., & Gagnaire, P. A. (2020). The contribution of ancient admixture to reproductive isolation between European sea bass lineages. *Evolution Letters*, 4(3), 226–242. <https://doi.org/10.1002/EVL3.169>
- Edwards, C. E., & Weinig, C. (2011). The quantitative-genetic and QTL architecture of trait integration and modularity in *Brassica rapa* across simulated seasonal settings. *Heredity*, 106(4), 661–677. <https://doi.org/10.1038/hdy.2010.103>
- FAO. (2018). *The state of Mediterranean and Black Sea fisheries* (p. 172). General Fisheries Commission for the Mediterranean.
- FAO. (2020). *The state of Mediterranean and Black Sea fisheries 2020*. General Fisheries Commission for the Mediterranean. <https://doi.org/10.4060/cb2429en>
- Fernández-Corredor, E., Albo-Puigserver, M., Pennino, M. G., Bellido, J. M., & Coll, M. (2021). Influence of environmental factors on different life stages of European anchovy (*Engraulis encrasicolus*) and European sardine (*Sardina pilchardus*) from the Mediterranean Sea: A literature review. *Regional Studies in Marine Science*, 41, 101606. <https://doi.org/10.1016/j.rsma.2020.101606>
- Feuilloley, G., Fromentin, J.-M., Stemann, L., Demarcq, H., Estournel, C., & Saraux, C. (2020). Concomitant changes in the environment and small pelagic fish community of the Gulf of lions. *Concomitant changes in the Environment and small pelagic fish community of the Gulf of Lions*, 186, 102375. <https://doi.org/10.1016/j.pcean.2020.102375>
- Flanagan, S. P., Forester, B. R., Latch, E. K., Aitken, S. N., & Hoban, S. (2018). Guidelines for planning genomic assessment and monitoring of locally adaptive variation to inform species conservation. *Evolutionary Applications*, 11(7), 1035–1052. <https://doi.org/10.1111/EVA.12569>
- Fonseca, R., Campos, P., de la Iglesia, A. R., Barroso, G., Bergeron, L., Nande, M., Tuya, F., Abidli, S., Pérez, M., Riveiro, I., Carrera, P., Jurado-Ruzafa, A., MTG, S., Faria, R., Machado, A., Fonseca, M., Froufe, E., & Castro, L. F. C. (2021). Low coverage whole genome sequencing reveals the underlying structure of European sardine populations. *Authorea Preprints*, 1–32. Retrieved from <https://www.authorea.com/users/402855/articles/514589-low-coverage-whole-genome-sequencing-reveals-the-underlying-structure-of-european-sardine-populations>
- Forester, B. R., Lasky, J. R., Wagner, H. H., & Urban, D. L. (2018). Comparing methods for detecting multilocus adaptation with multivariate genotype–environment associations. *Molecular Ecology*, 27(9), 2215–2233. <https://doi.org/10.1111/mec.14584>
- Gagnaire, P.-A., Broquet, T., Aurelle, D., Viard, F., Souissi, A., Bonhomme, F., Arnaud-Haond, S., & Bierne, N. (2015). Using neutral, selected, and hitchhiker loci to assess connectivity of marine populations in the genomic era. *Evolutionary Applications*, 8(8), 769–786. <https://doi.org/10.1111/eva.12288>
- Galarza, J. A., Carreras-Carbonell, J., Macpherson, E., Pascual, M., Roques, S., Turner, G. F., & Rico, C. (2009). The influence of oceanographic fronts and early-life-history traits on connectivity among littoral fish species. *Proceedings of the National Academy of Sciences of the United States of America*, 106(5), 1473–1478. <https://doi.org/10.1073/PNAS.0806804106>

- Ganias, K. (2009). Linking sardine spawning dynamics to environmental variability. *Estuarine, Coastal and Shelf Science*, 84(3), 402–408. <https://doi.org/10.1016/J.ECSS.2009.07.004>
- Ganias, K., Somarakis, S., Machias, A., & Theodorou, A. (2004). Pattern of oocyte development and batch fecundity in the Mediterranean sardine. *Fisheries Research*, 67(1), 13–23. <https://doi.org/10.1016/J.FISHRES.2003.08.008>
- García-Rivera, S., Sánchez-Lizaso, J. L., & Bellido-Millán, J. M. (2017). Composition, spatial distribution and sources of macro-marine litter on the Gulf of Alicante seafloor (Spanish Mediterranean). *Marine Pollution Bulletin*, 121(1–2), 249–259. <https://doi.org/10.1016/j.marpolbul.2017.06.020>
- Garrido, S., Cristóvão, A., Caldeira, C., Ben-Hamadou, R., Baylina, N., Batista, H., Peck, M., Ré, P., Saiz, E., & Santos, A. M. P. (2016). Effect of temperature on the growth, survival, development and foraging behaviour of *Sardina pilchardus* larvae. *Marine Ecology Progress Series*, 559, 131–145. <https://doi.org/10.3354/meps11881>
- Garrido, S., Rosa, R., Ben-Hamadou, R., Cunha, M. E., Chicharo, M. A., & van der Lingen, C. D. (2007). Effect of maternal fat reserves on the fatty acid composition of sardine (*Sardina pilchardus*) oocytes. *Comparative Biochemistry and Physiology - B Biochemistry and Molecular Biology*, 148(4), 398–409. <https://doi.org/10.1016/j.cbpb.2007.07.008>
- Garrido, S., Rosa, R., Ben-Hamadou, R., Cunha, M. E., Chicharo, M. A., & Van Der Lingen, C. D. (2008). Spatio-temporal variability in fatty acid trophic biomarkers in stomach contents and muscle of Iberian sardine (*Sardina pilchardus*) and its relationship with spawning. *Marine Biology*, 154(6), 1053–1065. <https://doi.org/10.1007/s00227-008-0999-7>
- Garrido, S., Silva, A., Marques, V., Figueiredo, I., Bryère, P., Mangin, A., & Santos, A. M. P. (2017). Temperature and food-mediated variability of European Atlantic sardine recruitment. *Progress in Oceanography*, 159(October), 267–275. <https://doi.org/10.1016/j.pcean.2017.10.006>
- Garrido, S., & van der Lingen, C. D. (2014). Feeding biology and ecology. In *Biology and ecology of sardines and anchovies* (pp. 135–202). CRC Press. <https://doi.org/10.1201/b16682-10>
- Georgakopoulou, E., Katharios, P., Divanach, P., & Koumoundouros, G. (2010). Effect of temperature on the development of skeletal deformities in gilthead seabream (*Sparus aurata* Linnaeus, 1758). *Aquaculture*, 308(1–2), 13–19. <https://doi.org/10.1016/j.aquaculture.2010.08.006>
- Gordó-Vilaseca, C., Pennino, M. G., Albo-Puigserver, M., Wolff, M., & Coll, M. (2021). Modelling the spatial distribution of *Sardina pilchardus* and *Engraulis encrasicolus* spawning habitat in the NW Mediterranean Sea. *Marine Environmental Research*, 169, 105381. <https://doi.org/10.1016/j.marenvres.2021.105381>
- Greenbaum, G., Rubin, A., Templeton, A. R., & Rosenberg, N. A. (2019). Network-based hierarchical population structure analysis for large genomic data sets. *Genome Research*, 29(12), 2020–2033. <https://doi.org/10.1101/gr.250092.119>
- Griswold, C. K. (2006). Pleiotropic mutation, modularity and evolvability. *Evolution & Development*, 8(1), 81–93. <https://doi.org/10.1111/j.1525-142X.2006.05077.x>
- Grummer, J. A., Beheregaray, L. B., Bernatchez, L., Hand, B. K., Luikart, G., Narum, S. R., & Taylor, E. B. (2019). Aquatic landscape genomics and environmental effects on genetic variation. *Trends in Ecology and Evolution*, 34(7), 641–654. <https://doi.org/10.1016/j.tree.2019.02.013>
- Guillot, G., Vitalis, R., le Rouzic, A., & Gautier, M. (2014). Detecting correlation between allele frequencies and environmental variables as a signature of selection: A fast computational approach for genome-wide studies. *Spatial Statistics*, 8, 145–155. <https://doi.org/10.1016/j.jspasta.2013.08.001>
- Hauser, L., & Carvalho, G. R. (2008). Paradigm shifts in marine fisheries genetics: Ugly hypotheses slain by beautiful facts. *Fish and Fisheries*, 9(4), 333–362. <https://doi.org/10.1111/J.1467-2979.2008.00299.X>
- Heino, M., Díaz Pauli, B., & Dieckmann, U. (2015). Fisheries-induced evolution. *Annual Review of Ecology, Evolution, and Systematics*, 46(1), 461–480. <https://doi.org/10.1146/ANNUREV-ECOLSYS-112414-054339>
- Hidalgo, M., Rossi, V., Monroy, P., Ser-Giacomi, E., Hernández-García, E., Guijarro, B., Massutí, E., Alemany, F., Jadaud, A., Perez, J. L., & Reglero, P. (2019). Accounting for ocean connectivity and hydroclimate in fish recruitment fluctuations within transboundary metapopulations. *Ecological Applications*, 29(5), 1–13. <https://doi.org/10.1002/eap.1913>
- Hoffmann, A. A., & Willi, Y. (2008). Detecting genetic responses to environmental change. *Nature Reviews Genetics*, 9(6), 421–432. <https://doi.org/10.1038/nrg2339>
- Huang, J., Li, Y., Liu, Z., Kang, Y., & Wang, J. (2018). Transcriptomic responses to heat stress in rainbow trout *Oncorhynchus mykiss* head kidney. *Fish and Shellfish Immunology*, 82, 32–40. <https://doi.org/10.1016/j.fsi.2018.08.002>
- Huang, Z., Ma, A., Yang, S., Liu, X., Zhao, T., Zhang, J., Wang, X. A., Sun, Z., & Liu, Z. (2020). Transcriptome analysis and weighted gene co-expression network reveals potential genes responses to heat stress in turbot *Scophthalmus maximus*. *Comparative Biochemistry and Physiology-Part D: Genomics and Proteomics*, 33, 100632. <https://doi.org/10.1016/j.cbd.2019.100632>
- ICES. (2015). Report of the working group on southern horse mackerel, anchovy and sardine (WGHANSA), 24–29 June 2015, Lisbon, Portugal. ICES CM 2015/ACOM:16. 612pp.
- Jombart, T. (2008). ADEGENET: A R package for the multivariate analysis of genetic markers. *Bioinformatics*, 24(11), 1403–1405. <https://doi.org/10.1093/bioinformatics/btn129>
- Kasapidis, P. (2014). Phylogeography and population genetics. In K. Ganias (Ed.), *Biology and ecology of sardines and anchovies* (pp. 43–75). CRC Press, Taylor and Francis Group. <https://doi.org/10.1201/b16682-7>
- Kasapidis, P., Silva, A., Zampicini, G., & Magoulas, A. (2012). Evidence for microsatellite hitchhiking selection in European sardine (*Sardina pilchardus*) and implications in inferring stock structure. *Scientia Marina*, 76(1), 123–132.
- Kass, E. R., & Raftery, E. A. (1995). Bayes factors. *Journal of the American Statistical Association*, 90, 773–795.
- Kess, T., Bentzen, P., Lehnert, S. J., Sylvester, E. V. A., Lien, S., Kent, M. P., Sinclair-Waters, M., Morris, C., Wringe, B., Fairweather, R., & Bradbury, I. R. (2020). Modular chromosome rearrangements reveal parallel and nonparallel adaptation in a marine fish. *Ecology and Evolution*, 10(2), 638–653. <https://doi.org/10.1002/ece3.5828>
- Kess, T., Gross, J., Harper, F., & Boulding, E. G. (2016). Low-cost ddRAD method of SNP discovery and genotyping applied to the periwinkle *Littorina saxatilis*. *Journal of Molluscan Studies*, 82(1), 104–109. <https://doi.org/10.1093/mollus/eyv042>
- Kliebenstein, D. J. (2011). Genetic and functional modularity: How does an organism solve a nearly infinite genetic/environmental problem space. *Heredity*, 106(6), 909–910. <https://doi.org/10.1038/hdy.2010.136>
- Laurent, V., Caneco, B., Magoulas, A., & Planes, S. (2007). Isolation by distance and selection effects on genetic structure of sardines *Sardina pilchardus* Walbaum. *Journal of Fish Biology*, 71, 1–17. <https://doi.org/10.1111/j.1095-8649.2007.01450.x>
- Le Corre, V., & Kremer, A. (2003). Genetic variability at neutral markers, quantitative trait loci and trait in a subdivided population under selection. *Genetics*, 164(3), 1205–1219. <https://doi.org/10.1093/genetics/164.3.1205>
- Le Nagard, H., Chao, L., & Tenaillon, O. (2011). The emergence of complexity and restricted pleiotropy in adapting networks. *BMC Evolutionary Biology*, 11(1), 326. <https://doi.org/10.1186/1471-2148-11-326>
- Leroi, A. M. (2000). The scale independence of evolution. *Evolution and Development*, 2(2), 67–77. <https://doi.org/10.1046/j.1525-142x.2000.00044.x>

- Li, P., Liu, Q., Li, J., Wang, F., Wen, S., & Li, N. (2021). Transcriptomic responses to heat stress in gill and liver of endangered *Brachymystax lenok tsinlingensis*. *Comparative Biochemistry and Physiology—Part D: Genomics and Proteomics*, 38, 100791. <https://doi.org/10.1016/j.cbd.2021.100791>
- Liggins, L., Treml, E. A., & Riginos, C. (2019). Seascape genomics: Contextualizing adaptive and neutral genomic variation in the ocean environment. In: M. Oleksiak & O. Rajora (Eds.), *Population Genomics: Marine Organisms. Population Genomics* (pp. 171–218). Springer. [https://doi.org/10.1007/13836\\_2019\\_68](https://doi.org/10.1007/13836_2019_68)
- Lima, A. R. A., Garrido, S., Riveiro, I., Rodrigues, D., Angélico, M. M. P., Gonçalves, E. J., Peck, M. A., & Silva, G. (2022). Seasonal approach to forecast the suitability of spawning habitats of a temperate small pelagic fish under a high-emission climate change scenario. *Frontiers in Marine Science*, 9, 1523. <https://doi.org/10.3389/FMARS.2022.956654/BIBTEX>
- Lloret-Lloret, E., Albo-Puigserver, M., Giménez, J., Navarro, J., Pennino, M. G., Steenbeek, J., Bellido, J. M., & Coll, M. (2022). Small pelagic fish fitness relates to local environmental conditions and trophic variables. *Progress in Oceanography*, 202, 102745. <https://doi.org/10.1016/J.POCEAN.2022.102745>
- López-Márquez, V., Cushman, S. A., Templado, J., Wan, H. Y., Bothwell, H. M., & Machordom, A. (2021). Genetic connectivity of two marine gastropods in the Mediterranean Sea: Seascape genetics reveals species-specific oceanographic drivers of gene flow. *Molecular Ecology*, 30(19), 4608–4629. <https://doi.org/10.1111/MEC.16080>
- Lotterhos, K. E., Yeaman, S., Degner, J., Aitken, S., & Hodgins, K. A. (2018). Modularity of genes involved in local adaptation to climate despite physical linkage. *Genome Biology*, 19(1), 157. <https://doi.org/10.1186/s13059-018-1545-7>
- Louro, B., De Moro, G., Garcia, C., Cox, C. J., Veríssimo, A., Sabatino, S. J., Santos, A. M., & Canário, A. V. M. (2019). A haplotype-resolved draft genome of the European sardine (*Sardina pilchardus*). *GigaScience*, 8(5), 1–8. <https://doi.org/10.1093/gigascience/giz059>
- Lowerre-Barbieri, S., DeCelles, G., Pepin, P., Catalán, I. A., Muhling, B., Erisman, B., Cadrin, S. X., Alós, J., Ospina-Alvarez, A., Stachura, M. M., Tringali, M. D., Burnsed, S. W., & Paris, C. B. (2017). Reproductive resilience: A paradigm shift in understanding spawner-recruit systems in exploited marine fish. *Fish and Fisheries*, 18(2), 285–312. <https://doi.org/10.1111/FAF.12180>
- Lundy, C. J., Moran, P., Rico, C., Milner, R. S., & Hewitt, G. M. (1999). Macrogeographical population differentiation in oceanic environments: A case study of European hake (*Merluccius merluccius*), a commercially important fish. *Molecular Ecology*, 8(11), 1889–1898. <https://doi.org/10.1046/j.1365-294X.1999.00789.x>
- Luu, K., Bazin, E., & Blum, M. G. (2017). pcadapt: an R package to perform genome scans for selection based on principal component analysis. *Mol Ecol Resour*, 33, 67–77. <https://doi.org/10.1111/1755-0998.12592>
- Machu, E., Ettahiri, O., Kifani, S., Benazzouz, A., Makaoui, A., & Demarcq, H. (2009). Environmental control of the recruitment of sardines (*Sardina pilchardus*) over the western saharan shelf between 1995 and 2002: A coupled physical-biogeochemical modelling experiment. *Fisheries Oceanography*, 18(5), 287–300. <https://doi.org/10.1111/j.1365-2419.2009.00511.x>
- Metivier, S. L., Kim, J. H., & Addison, J. A. (2017). Genotype by sequencing identifies natural selection as a driver of intraspecific divergence in Atlantic populations of the high dispersal marine invertebrate. *Macoma petalum*. *Ecology and Evolution*, 7(19), 8058–8072. <https://doi.org/10.1002/ece3.3332>
- Moody, K. N., Hunter, S. N., Childress, M. J., Blob, R. W., Schoenfuss, H. L., Blum, M. J., & Ptacek, M. B. (2015). Local adaptation despite high gene flow in the waterfall-climbing Hawaiian goby. *Sicyopterus stimpsoni*. *Molecular Ecology*, 24(3), 545–563. <https://doi.org/10.1111/MEC.13016>
- Naciri, M., Lemaire, C., Borsa, P., & Bonhomme, F. (1999). Genetic study of the Atlantic/Mediterranean transition in sea bass (*Dicentrarchus labrax*). *Journal of Heredity*, 90(6), 591–596. <https://doi.org/10.1093/jhered/90.6.591>
- Oksanen, A. J., Blanchet, F. G., Kindt, R., Legendre, P., Minchin, P. R., Hara, R. B. O., Simpson, G. L., Solymos, P., & Stevens, M. H. H. (2012). *Community Ecology Package*. *Ecology Package*. p. 263. <https://cran.r-project.org/package=vegan>
- Palomera, I., Olivar, M. P., Salat, J., Sabatés, A., Coll, M., García, A., & Morales-Nin, B. (2007). Small pelagic fish in the NW Mediterranean Sea: An ecological review. *Progress in Oceanography*, 74(2–3), 377–396. <https://doi.org/10.1016/j.pocean.2007.04.012>
- Pardo-Díaz, C., Salazar, C., & Jiggins, C. D. (2015). Towards the identification of the loci of adaptive evolution. *Methods in Ecology and Evolution*, 6(4), 445–464. <https://doi.org/10.1111/2041-210X.12324>
- Parrish, R. H., Serra, R., & Grant, W. S. (1989). The monotypic sardines, *Sardina* and *Sardinops*: Their taxonomy, distribution, stock structure, and zoogeography. *Canadian Journal of Fisheries and Aquatic Sciences*, 46(11), 2019–2036. <https://doi.org/10.1139/f89-251>
- Patarnello, T., Volckaert, F. A. M. J., & Castilho, R. (2007). Pillars of Hercules: Is the Atlantic-Mediterranean transition a phylogeographical break? *Molecular Ecology*, 16, 4426–4444. <https://doi.org/10.1111/j.1365-294X.2007.03477.x>
- Pavlidis, P., Jensen, J. D., Stephan, W., & Stamatakis, A. (2012). A critical assessment of storytelling: Gene ontology categories and the importance of validating genomic scans. *Molecular Biology and Evolution*, 29(10), 3237–3248. <https://doi.org/10.1093/MOLBEV/MSS136>
- Pennino, M. G., Coll, M., Albo-Puigserver, M., Fernández-Corredor, E., Steenbeek, J., Giraldez, A., Esteban, A., & Bellido, J. M. (2020). Current and future influence of environmental factors on small pelagic fish distributions in the northwestern Mediterranean Sea. *Frontiers in Marine Science*, 7, 622. <https://doi.org/10.3389/fmars.2020.00622>
- Peristeraki, P., Bitetto, I., Carbonara, P., Carlucci, R., Certain, G., De Carlo, F., Gristina, M., Kamidis, N., Pesci, P., Stagioni, M., Valls, M., & Tserpes, G. (2019). Investigation of spatiotemporal patterns in mean temperature and mean trophic level of MEDITS survey catches in the Mediterranean Sea. *Scientia Marina*, 83(S1), 165–174.
- Price, N., Lopez, L., Platts, A. E., & Lasky, J. R. (2020). In the presence of population structure: From genomics to candidate genes underlying local adaptation. *Ecology and Evolution*, 10(4), 1889–1904. <https://doi.org/10.1002/ece3.6002>
- Pritchard, J. K., Stephens, M., & Donnelly, P. (2000). Inference of population structure using multilocus genotype data. *Genetics*, 155(2), 945–959.
- R Core Team. (2020). *R: A language and environment for statistical computing*. R Foundation for Statistical Computing <https://www.r-project.org/>
- Raj, A., Stephens, M., & Pritchard, J. K. (2014). FastSTRUCTURE: Variational inference of population structure in large SNP data sets. *Genetics*, 197(2), 573–589. <https://doi.org/10.1534/genetics.114.164350>
- Ramírez, F., Afán, I., Davis, L. S., & Chiaradia, A. (2017). Climate impacts on global hot spots of marine biodiversity. *Science Advances*, 3(2), e1601198. <https://doi.org/10.1126/sciadv.1601198>
- Ramírez, F., Coll, M., Navarro, J., Bustamante, J., & Green, A. J. (2018). Spatial congruence between multiple stressors in the Mediterranean Sea may reduce its resilience to climate impacts. *Scientific Reports*, 8(1), 14871. <https://doi.org/10.1038/s41598-018-33237-w>
- Ramírez, F., Pennino, M. G., Albo-Puigserver, M., Steenbeek, J., Bellido, J. M., & Coll, M. (2021). SOS small pelagics: A safe operating space for small pelagic fish in the western Mediterranean Sea. *Science of the Total Environment*, 756, 144002. <https://doi.org/10.1016/j.scitotenv.2020.144002>

- Reiss, H., Hoarau, G., Dickey-Collas, M., & Wolff, W. J. (2009). Genetic population structure of marine fish: Mismatch between biological and fisheries management units. *Fish and Fisheries*, 10(4), 361–395. <https://doi.org/10.1111/J.1467-2979.2008.00324.X>
- Riginos, C., Crandall, E. D., Liggins, L., Bongaerts, P., & Trembl, E. A. (2016). Navigating the currents of seascape genomics: How spatial analyses can augment population genomic studies. *Current Zoology*, zow067, 581–601. <https://doi.org/10.1093/cz/zow067>
- Sandoval-Castillo, J., & Beheregaray, L. B. (2020). Oceanographic heterogeneity influences an ecological radiation in elasmobranchs. *Journal of Biogeography*, 47(7), 1599–1611. <https://doi.org/10.1111/JBI.13865>
- Santos, A. M. P., Nieblas, A. E., Verley, P., Teles-Machado, A., Bonhommeau, S., Lett, C., Garrido, S., & Peliz, A. (2018). Sardine (*Sardina pilchardus*) larval dispersal in the Iberian upwelling system, using coupled biophysical techniques. *Progress in Oceanography*, 162, 83–97. <https://doi.org/10.1016/j.poccean.2018.02.011>
- Santos, A. M. P., Ré, P., Dos Santos, A., & Peliz, Á. (2006). Vertical distribution of the European sardine (*Sardina pilchardus*) larvae and its implications for their survival. *Journal of Plankton Research*, 28(5), 523–532. <https://doi.org/10.1093/plankt/fbi137>
- Santos, X., Brito, J. C., Sillero, N., Pleguezuelos, J. M., Llorente, G. A., Fahd, S., & Parellada, X. (2006). Inferring habitat-suitability areas with ecological modelling techniques and GIS: A contribution to assess the conservation status of *Vipera latastei*. *Biological Conservation*, 130(3), 416–425.
- Saraux, C., Van Beveren, E., Brosset, P., Queiros, Q., Bourdeix, J. H., Dutto, G., Gasset, E., Jac, C., Bonhommeau, S., & Fromentin, J. M. (2019). Small pelagic fish dynamics: A review of mechanisms in the Gulf of lions. *Deep-Sea Research Part II: Topical Studies in Oceanography*, 159, 52–61. <https://doi.org/10.1016/j.dsr2.2018.02.010>
- Selkoe, K. A., Watson, J. R., White, C., Ben Horin, T., Iacchi, M., Mitarai, S., Siegel, D. A., Gaines, S. D., & Toonen, R. J. (2010). Taking the chaos out of genetic patchiness: Seascape genetics reveals ecological and oceanographic drivers of genetic patterns in three temperate reef species. *Molecular Ecology*, 19(17), 3708–3726.
- Solari, A. P., Santamaría, M. T. G., Borges, M. F., Santos, A. M. P., Mendes, H., Balguerías, E., ... Bas, C. (2010). On the dynamics of *Sardina pilchardus*: Orbits of stability and environmental forcing. *ICES Journal of Marine Science*, 67(8), 1565–1573. <https://doi.org/10.1093/icesjms/fsq107>
- Stratoudakis, Y., Coombs, S., De Lanzós, A. L., Halliday, N., Costas, G., Caneco, B., Franco, C., Conway, D., Santos, M. B., Silva, A., & Bernal, M. (2007). Sardine (*Sardina pilchardus*) spawning seasonality in European waters of the Northeast Atlantic. *Marine Biology*, 152(1), 201–212. <https://doi.org/10.1007/s00227-007-0674-4>
- Sugihara, G., May, R., Ye, H., Hsieh, C. H., Deyle, E., Fogarty, M., & Munch, S. (2012). Detecting causality in complex ecosystems. *Science*, 338(6106), 496–500. <https://doi.org/10.1126/science.1227079>
- Teske, P. R., Emami-Khoyi, A., Golla, T. R., Sandoval-Castillo, J., Lamont, T., Chiazzari, B., McQuaid, C. D., Beheregaray, L. B., & van der Lingen, C. D. (2021). The sardine run in southeastern Africa is a mass migration into an ecological trap. *Science Advances*, 7(38). <https://doi.org/10.1126/sciadv.abf4514>
- UNEP/MAP. (2015). *Marine Litter Assessment in the Mediterranean*. <https://wedocs.unep.org/bitstream/handle/20.500.11822/7098/MarineLitterEng.pdf?sequence=1&isAllowed=y>
- Van Beveren, E., Bonhommeau, S., Fromentin, J. M., Bigot, J. L., Bourdeix, J. H., Brosset, P., Roos, D., & Saraux, C. (2014). Rapid changes in growth, condition, size and age of small pelagic fish in the Mediterranean. *Marine Biology*, 161(8), 1809–1822. <https://doi.org/10.1007/s00227-014-2463-1>
- Vandeputte, M., Clota, F., Sadoul, B., Blanc, M. O., Blondeau-Bidet, E., Bégout, M. L., Cousin, X., & Geffroy, B. (2020). Low temperature has opposite effects on sex determination in a marine fish at the larval/postlarval and juvenile stages. *Ecology and Evolution*, 10(24), 13825–13835. <https://doi.org/10.1002/ece3.6972>
- Vasilakopoulos, P., Maravelias, C. D., & Tserpes, G. (2014). The alarming decline of mediterranean fish stocks. *Current Biology*, 24(14), 1643–1648. <https://doi.org/10.1016/j.cub.2014.05.070>
- Wagner, G. P., & Altenberg, L. (1996). Perspective: Complex adaptations and the evolution of evolvability. *Evolution*, 50(3), 967. <https://doi.org/10.2307/2410639>
- Zafeiropoulos, H., Gioti, A., Ninidakis, S., Potirakis, A., Paragkiamian, S., Angelova, N., Antoniou, A., Danis, T., Kaitetzidou, E., Kasapidis, P., Kristoffersen, J. B., Papadogiannis, V., Pavlouidi, C., Ha, Q. V., Lagnel, J., Pattakos, N., Perantinos, G., Sidirokastritis, D., Vavilis, P., ... Pafilis, E. (2021). 0s and 1s in marine molecular research: A regional HPC perspective. *GigaScience*, 10(8), 1–12. <https://doi.org/10.1093/GIGASCIENCE/GIAB053>
- Zelle, H., Appeldoorn, G., Burges, G., & van Oldenborgh, G. J. (2004). The relationship between sea surface temperature and thermocline depth in the eastern equatorial Pacific. *Journal of Physical Oceanography*, 34(3), 643–655. <https://doi.org/10.1175/2523.1>
- Zhao, Q., & Costello, M. J. (2019). Summer and winter ecosystems of the world ocean photic zone. *Ecological Research*, 34(4), 457–471. <https://doi.org/10.1111/1440-1703.12006>

## SUPPORTING INFORMATION

Additional supporting information can be found online in the Supporting Information section at the end of this article.

**How to cite this article:** Antoniou, A., Manousaki, T., Ramírez, F., Cariani, A., Cannas, R., Kasapidis, P., Magoulas, A., Albo-Puigserver, M., Lloret-Lloret, E., Bellido, J. M., Pennino, M. G., Follesa, M. C., Esteban, A., Saraux, C., Sbrana, M., Spedicato, M. T., Coll, M., & Tsigonopoulos, C. S. (2023). Sardines at a junction: Seascape genomics reveals ecological and oceanographic drivers of variation in the NW Mediterranean Sea. *Molecular Ecology*, 00, 1–21. <https://doi.org/10.1111/mec.16840>