

The University of Maine

DigitalCommons@UMaine

Vocal Popular Sheet Music Collection

Public domain (may be downloaded in full)

1927

Highways Are Happy Ways: When They Lead The Way To Home

Larry Shay
Composer

Harry Harris
Lyricist

Malie
Lyricist

Follow this and additional works at: <https://digitalcommons.library.umaine.edu/mmb-vp>

Recommended Citation

Shay, Larry; Harris, Harry; and Malie, "Highways Are Happy Ways: When They Lead The Way To Home" (1927). *Vocal Popular Sheet Music Collection*. Score 6381.
<https://digitalcommons.library.umaine.edu/mmb-vp/6381>

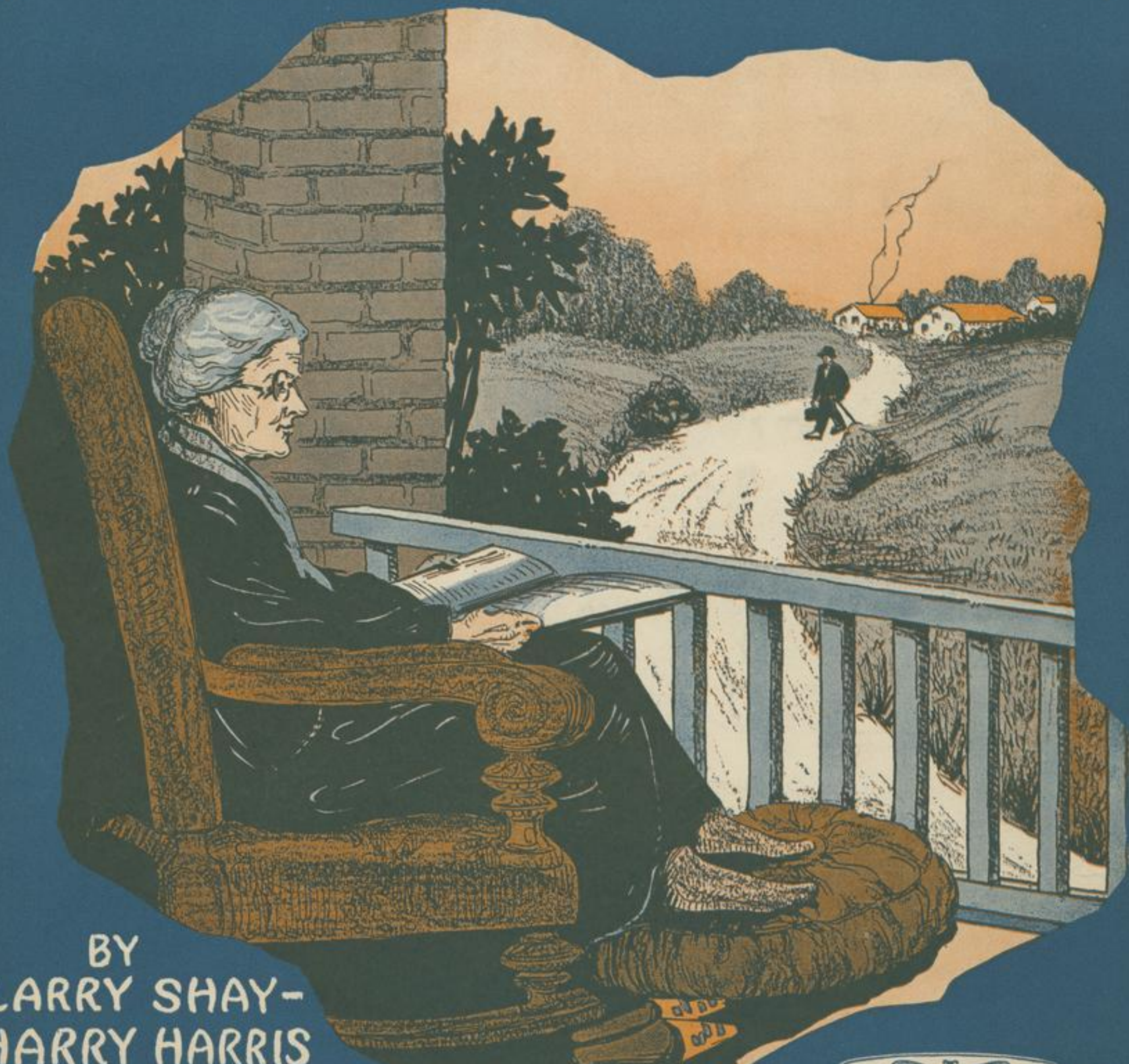
This Book is brought to you for free and open access by DigitalCommons@UMaine. It has been accepted for inclusion in Vocal Popular Sheet Music Collection by an authorized administrator of DigitalCommons@UMaine. For more information, please contact um.library.technical.services@maine.edu.

Lillian

A WORTH WEIL SONG

HIGHWAYS ARE HAPPY WAYS

(WHEN THEY LEAD THE WAY TO HOME)



BY
LARRY SHAY-
HARRY HARRIS
AND
TAMMIE MALIE

MILTON WEIL MUSIC CO. INC.
54 W. Randolph St., CHICAGO

Vp015579
1927
Hi9

Bags
Lending Library
Blue Hill, Maine
Date 1920



I'd Love To Call You My Sweetheart

Piano Tune Uke. in Eb

Bb Eb G C

A Rube Bennet Arrangement

By { JOE GOODWIN
LARRY SHAY
& PAUL ASH

I'd love to call you my sweet - heart, — Hon - est I

p-mf

love you I do, — I cry for you in the

day time, — When I sleep I dream of you, —

Copyright MCMXXVI by Milton Weil Music Co., Chicago, Ill.

International Copyright Secured

Made IN U. S. A.

All Rights Reserved

COPIES ON SALE WHEREVER MUSIC IS SOLD

The MILTON WEIL MUSIC CO. Chicago, Ill.

This Number can also be had for you Phonograph or Player Piano

Highways Are Happy Ways

(When They Lead The Way To Home)

Lyric by
HARRY HARRIS
TOMMIE MALIE

Piano Tune Uke in D
A D F# B

Music by
LARRY SHAY

A Rube Bennett Arrangement

Moderato

First system of piano introduction musical notation, featuring treble and bass staves with a forte (f) dynamic marking.

Second system of piano introduction musical notation, including a section marked 'Till Ready' with a piano (p) dynamic marking.

Vocal melody and piano accompaniment for the first line of lyrics. Includes guitar chord diagrams above the vocal line.

Af - ter days of roam - ing, Like a pige - on hom - ing, I am
Roads may lead all o - ver, If you are a ro - ver, You'll find

Vocal melody and piano accompaniment for the second line of lyrics. Includes guitar chord diagrams above the vocal line.

go - ing home to - day, _____ Roads that wore and tore me, Seem to
roads of ev' - ry kind, _____ When your heart grows wear - y, When the

smile be-fore me, Do you blame me when I say;
world seems drear-y, Bear this lit-tle thot in mind;

CHORUS

HIGH - WAYS ARE HAP-PY WAYS when they lead the

p-mf

way to home, High - ways bring

hap-py days to the bro - ken hearts that roam,

And as you tra - vel a - long those rib - bons of gray,

They all un - ra - vel, And pull you home - ward to stay, 'Cause

HIGH - WAYS ARE HAP - PY WAYS, when they lead the

way to home. home. *8va* *p* *f* *fz*

WORTH-WELL SONGS

HIGHWAYS ARE HAPPY WAYS



HIGH - WAYS — ARE HAP - PY WAYS — when they lead the way to home, —

Copyright MCMXXVII by Milton Weil Music Co., Chicago, Ill.

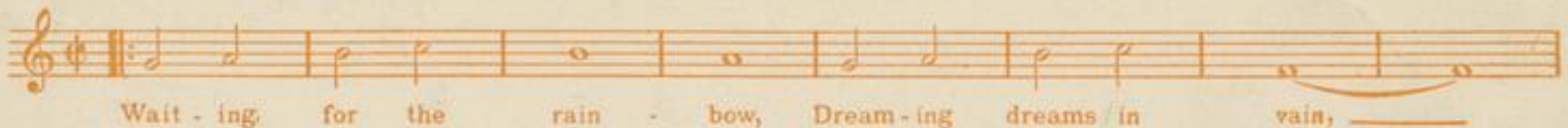
AFTER I'VE CALLED YOU SWEETHEART



Af - ter I've called you Sweet - heart, How can I call you friend? —

Copyright MCMXXVII by Milton Weil Music Co., Chicago, Ill.

WAITING FOR THE RAINBOW



Wait - ing for the rain - bow, Dream - ing dreams in vain, —

Copyright MCMXXVII by Milton Weil Music Co., Chicago, Ill.

THEN YOU'LL COME BACK TO ME



When you learn in your dreams just what lone - some - ness means, — Then you'll come

Copyright MCMXXVII by Milton Weil Music Co., Chicago, Ill.

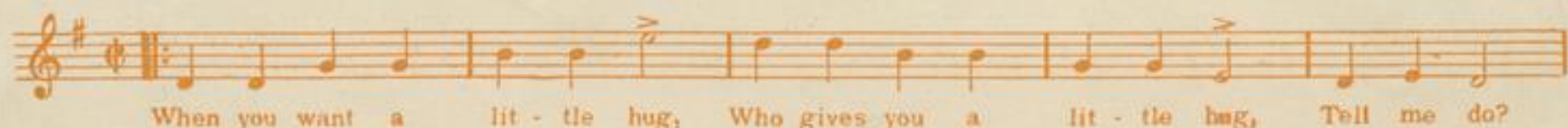
THAT'S WHAT I THINK OF YOU



What the birds love to sing, When they're hap - py in spring, That's what I

Copyright MCMXXVI by Milton Weil Music Co., Chicago, Ill.

WHO IS YOUR WHO



When you want a lit - tle hug, Who gives you a lit - tle hug, Tell me do?

Copyright MCMXXVII by Milton Weil Music Co., Chicago, Ill.

NIGHT TIME IN PICARDY



Night - time — in Pic - ar - dy, — Brings mem - o - ries — of you, —

Copyright MCMXXVII by Milton Weil Music Co., Chicago, Ill.