

## Research Paper

### Seasonal climate forecasts (SCFs) based risk management strategies: A case study of rainfed rice cultivation in India

N.L. KUSHWAHA<sup>1\*</sup>, JITENDRA RAJPUT<sup>1</sup>, PARESH B. SHIRSATH<sup>2</sup>, D.R. SENA<sup>1</sup>, and INDRA MANI<sup>1</sup>

<sup>1</sup>Division of Agricultural Engineering, ICAR-Indian Agricultural Research Institute, New Delhi-110012, India

<sup>2</sup>CGIAR Research Program on Climate Change, Agriculture and Food Security (CCAFS), Borlaug Institute for South Asia (BISA), International Maize and Wheat Improvement Centre (CIMMYT), New Delhi-110012, India

\* Corresponding author email : [nand.kushwaha@icar.gov.in](mailto:nand.kushwaha@icar.gov.in)

#### ABSTRACT

Seasonal climate forecasts (SCFs) have gained popularity in agriculture for climate risk management studies. The available forms of SCFs are not conducive to decision making because of a mismatch in scales over space and time. In this study, available SCFs were disaggregated using the FResampler1 technique to simulate rice yield (cultivar PR 114) under different nitrogen levels and planting dates using DSSAT (Decision Support System for Agrotechnology Transfer) for Sitamarhi district, Bihar, India. Results showed that the late planting of rice predicted the highest yield (3800 kg ha<sup>-1</sup>) with high variability under SCF (wet) and 200 kg ha<sup>-1</sup> application of nitrogen fertilizer. Similarly, for SCF (dry), the late planting of rice simulated high yield (3100 kg ha<sup>-1</sup>) attributes with 200 kg ha<sup>-1</sup> of nitrogen fertilizer. However, rice yield under climatology (3450 kg ha<sup>-1</sup>) was more than SCF (dry) (3100 kg ha<sup>-1</sup>). Planting of rice on 15<sup>th</sup> June 2019 under the SCF (normal) predicted low uncertainty with high mean yields as compared to the mid (05<sup>th</sup> July 2019), and late (25<sup>th</sup> July 2019) planting. The present study showed that by applying SCF, we can have a better understanding on "relative" changes in yield attributes with fertilizer doses and planting dates, which may be adopted by the climate adviser to offset the climate risk without compromising productivity.

**Keywords:** FResampler1, climate change, DSSAT, yield, rice, Sitamarhi.

Rainfed area provides around 58% of food demand worldwide and plays a major role in the protection of food, fibre and fuel. Rice is one of the principal crop in rainfed regions, it contributes about 25% of global rice production. Considered as a staple food and pivotal livelihood security, rice nearly feeds 65% of the Indian population. It is grown in about 43 M ha area with an average productivity of 2.6 tons ha<sup>-1</sup>. Production of rice is pegged at 102 million tons contributing approximately 40% of total food grain production. About 70% of the total rice area is limited to the eastern part of the Indian continent comprising of the states and regions such as Bihar, Chhattisgarh, Jharkhand, Madhya Pradesh, Orissa, Eastern Uttar Pradesh and West Bengal. Due to heavy rainfall in these areas, the crop is often grown under rainfed conditions (Pathak *et al.*, 2020 and Elbeltagi *et al.*, 2020). However, access to improved technologies and some pertinent climatic limitations (<https://drdpat.bih.nic.in>) the grain yields remain poor somewhere around (1.0-2.0 tons ha<sup>-1</sup> for states like Odisha and Bihar) (Pathak *et al.*, 2020).

By developing rainfed agriculture, these areas are known

to have tremendous untapped potential for rising production in the future (Singh *et al.*, 2017). The production of rainfed rice is prone to changes in temperature and precipitation due to its climatic dependency. Climate is the main driver of rainfed rice cultivation and its production. Therefore, climate changes, such as those that are expected in the rainfed areas (i.e., increased rainfall variability) may affect the areas for rainfed rice cultivation or may result in yield reduction. The cardinal optimum temperature values of growth of rice is about 25°C to 35°C. While, rice germination requires 22 to 31°C, anthesis and ripening requires 30°C and 23°C, respectively. A diurnal and nocturnal temperature range of 25-30°C and 20-25°C is favourable for flowering initiation (Pathak *et al.*, 2020). Rainfall range of 1000-1150 mm was found to be most favourable to attain the potential yield of rice in a rainfed ecosystem. The optimum humidity during rice crop period is about 60 to 80% (Pathak *et al.*, 2020 and Singh *et al.*, 2017) with detrimental consequences for rainfed crops that are dependent on natural rainfall (i.e. non-irrigated).

**Article info - DOI:** <https://doi.org/10.54386/jam.v24i1.775>

Received: 9 July 2021; Accepted: 6 January 2022; Published online: 11 February 2022

This work is licenced under a Creative Common Attribution 4.0 International licence @ Author(s), Publishing right @ Association of Agrometeorologists

In advent of seasonal climate predictions, considerable efforts have been made to utilise Seasonal Climate Forecasts (SCFs) for managing risks. However, the provision of SCFs alone could not be able to produce actionable evidences for the enhancement of farm-level decisions and interventions at the legislative stage. Lately, various decision-making tools such as crop simulation models were coupled to the SCFs, have shown promise strengthening in the strategic and operational assessments of uncertainties due to contingent behaviour of the climate during the growing seasons (Han *et al.*, 2017). This can offset the risk without compromising with the productivity. One of the legacy tools, CSM-CERES-Rice module of Decision Support System for Agrotechnology Transfer (DSSAT) had demonstrated its capabilities in being integrated to SCFs.

Several investigations in the past had applied crop simulation models using historical daily weather data which could not integrate SCFs due to the mismatch in scales over space and time (Eitzinger *et al.*, 2017; Liu *et al.*, 2017; Ma *et al.*, 2020, Dar *et al.*, 2017; Patel *et al.*, 2006; Patel *et al.*, 2008 and Alejo, 2020) SCFs provide seasonal climate probability in tercile form which can be used to generate synthetic daily weather files needed for crop models in a forecast mode (Han *et al.*, 2017).

With an obscure reference of use of SCFs in risk management in India and elsewhere, this study employs a coupling strategy of SCF with a crop simulation model (DSSAT with CSM-CERES-Rice module) to suggest the best climate risk management options for rice in Sitamarhi, Bihar, India, that belongs to a hot humid climate. The specific objectives include (1) creating an ensemble of daily weather sequences from SCFs to produce crop risk management using *DSSAT-CSM-CERES-Rice* module and an SCFs variant *FResampler1* and (2) to simulate the risk management scenarios in rainfed rice cultivation.

## MATERIALS AND METHODS

### Description of the study area

The district was selected for the study from the rainfed rice cultivation area reported by (Singh *et al.*, 2017) with detrimental consequences for rainfed crops that are dependent on natural rainfall (i.e. non-irrigated). The Sitamarhi is situated in the hot humid area of Bihar, India and has rice-based as principal crop, has been selected as a study area. The district covers an area of about 259.8 ha out of which 122.9 ha area is cultivable. The geographic coordinates of district headquarter are 26° 35' 14.2764" N latitude 85° 30' 4.2588" E longitude. Average annual rainfall in the study area is about 1680.2 mm. The soils of the study area are fine sandy loam, clayey, saline/calcareous and sandy soils. The details of the soil properties are given in Table 1.

### Source of meteorological data

The daily data of precipitation (PCP), maximum temperature (Tmax), minimum temperature (Tmin), solar radiation (RS) was extracted from the open access gridded data (1°×1° grid) provided by IMD (Indian Meteorological Department) using R software 4.0.5 over the period from 1990 to 2019. The R code was

taken from GitHub website (<https://github.com/mikejohnson51/climateR>). The monthly average of 30-year metrological data of the study area is presented in Fig. 1.

### Seasonal climate forecast

The climate predictions with sufficient lead time could play vital role in the agriculture. In this study, the SCFs was accessed from the website (<https://iri.columbia.edu/>) of International Research Institute for Climate and Society (IRI). Four year (2017-2020) and their climatology were simulated, a wet SCF (20%BN, 20%NN and 60%AN) for JJA (June July August) of 2018, a dry SCF (60%BN, 20%NN and 20%AN) for JJA of 2017, a normal SCF (20%BN, 60%NN and 20%AN) for JJA of 2019 and a present SCF (40%BN, 30%NN and 30%AN) for JJA of 2020. In this study three different planting dates (15<sup>th</sup> June, 5<sup>th</sup> and 25<sup>th</sup>, July for every selected SCF) and two applications of nitrogen fertilizer were simulated. The Rice calendar for Sitamrhi district is given in Table 2.

### Down scaling of seasonal climate forecast

A main constraint in integrating crop simulation models and SCFs is the difference in spatio-temporal scales. The inputs for the crop models are meteorological variables, while in case of availability of SFCs is based on seasonal climate data. In this study, *FResampler1* was used to downscale the SCFs to daily weather input with the *DSSAT* model for planning of risk management strategies. A collection of daily meteorological data *viz.*, Tmin, Tmax, rainfall, and RS (solar radiation) from years belonging to a certain type of rainfall terciles [*i.e.* Below Normal (dry), Near Normal (normal), Above Normal (wet) and present] is taken randomly from historical records for a season of interest. In this way, the covariance of rainfall and other environmental parameters is maintained by *FResampler1*. since the values of Tmin, Tmax and RS (solar radiation) are conditional on rainfall (Capa *et al.*, 2015 and Han *et al.*, 2017). The seasonal climate forecasts released by the NOAA-Climate Prediction Centre, the International Research Institute for Climate and Society (IRI) provided in tercile probabilities.

### DSSAT-CSM-CERES-Rice model

The CSM-CERES-Rice is a physiologically based and management-oriented model embedded in *DSSAT* v4.5 that utilizes carbon, N, water and energy balance principles to simulate the growth and development of rice plant was applied in the present investigation. The model simulates the growth stage of rice plants on a daily basis, and the final crop yield is computed on the date of harvest. The crop models needs inputs such as plant genetics, plant geometry, planting and harvest dates, fertilizer doses, environmental factors and weather conditions (Ahmad *et al.*, 2012).

Rice cultivars (PR 114) and calibrated genetic coefficients were used for simulation with different SCF, planting dates and fertilizer application (Pathak *et al.*, 2004). The simulation was done for dry (2017), wet (2018), normal (2019) and present (2020) SCF with different planting dates and fertilizer applications.

### Constructing management scenarios

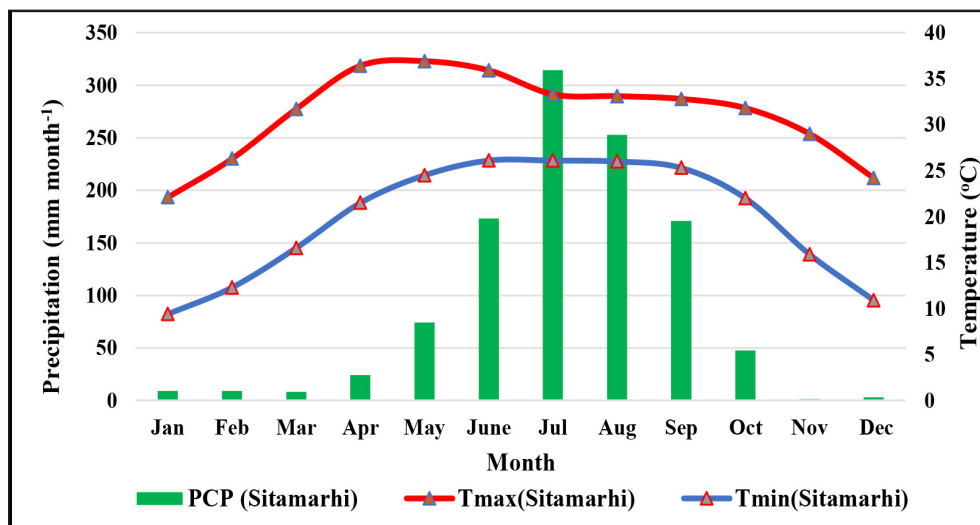
The CSM-CERES-Rice model was applied to generate

**Table 1:** Summary of soil properties for the Sitamarhi

Soil depth (cm)	Wilting point (cm <sup>3</sup> cm <sup>-3</sup> )	Field capacity (cm <sup>3</sup> cm <sup>-3</sup> )	Saturated water content (cm <sup>3</sup> cm <sup>-3</sup> )	Root growth factor	Saturated hydraulic conductivity (cm h <sup>-1</sup> )	Bulk density (g cm <sup>-3</sup> )	Organic carbon (%)	Clay (<0.002mm) %	Silt (0.05 to 0.002mm) %	Ph in water
0-10	0.14	0.28	0.53	1.00	0.32	1.52	0.42	38.6	32.1	8.1
10-30	0.14	0.28	0.53	1.00	0.32	1.52	0.41	38.6	32.1	8.1
30-45	0.14	0.28	0.53	1.00	0.32	1.52	0.40	38.6	32.0	4.5
45-60	0.17	0.28	0.58	0.50	0.23	1.52	0.31	43.1	45.6	4.0
60-90	0.17	0.30	0.58	0.31	0.23	1.52	0.31	43.1	45.6	4.0
90-140	0.19	0.32	0.60	0.27	0.20	1.51	0.29	36.1	42.1	4.4
140-170	0.17	0.29	0.29	0.23	0.18	1.46	0.26	39.1	33.1	4.9

**Table 2:** Rice calendar in the Sitamarhi district

Planting time	Up land	Mid land	Low land
Early planting	3 <sup>rd</sup> week of June	2 <sup>nd</sup> week of June	3 <sup>rd</sup> week of May
Peak planting	1 <sup>st</sup> week of July	3 <sup>rd</sup> week of June	4 <sup>th</sup> week of June
Late planting	2 <sup>nd</sup> week of July	1 <sup>st</sup> week of July	1 <sup>st</sup> week of June

**Fig. 1:** Monthly variation of principal meteorological parameters in Sitamarhi district

long term simulations of the rice cultivar PR 114 a high yield variety recommended in Sitamarhi, Bihar. The simulations were carried out for 30 years period (1990 to 2019) using the daily meteorological input data reconstructed using *FResampler1*. A total of 48 scenarios were built that included a factorial combination of 04 SCFs tercile probabilities (Wet, Dry, Normal and Present) as mentioned elsewhere in this manuscript), planting dates [i.e., 15<sup>th</sup> June (Early), 5<sup>th</sup> July (Mid) and 25<sup>th</sup> July (Late)] and N levels (i.e., 80, 120, 160 and 200 kg ha<sup>-1</sup>). The scenarios were then assessed using the strategy analysis program of DSSAT to compare percentile distributions for crop yield.

## RESULTS AND DISCUSSION

### *Effect of different planting dates and fertilizer applications under wet forecast*

Effects of different planting dates and fertilizer applications

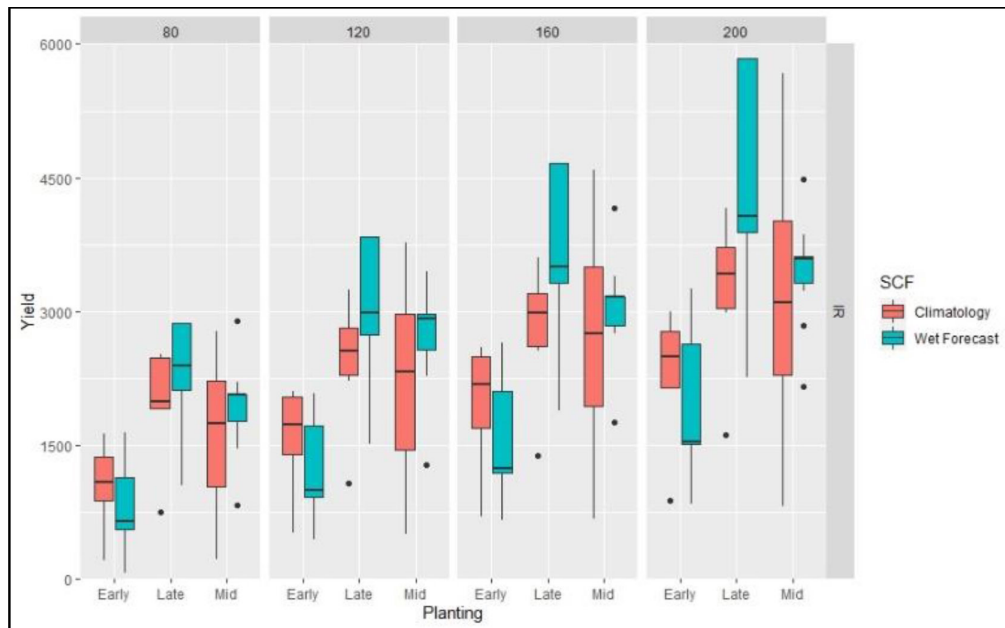
on yields of PT-114 were simulated. The 03 transplanting dates and 04 fertilizer application were simulated under an assumed wet SCF scenario (20% BN, 20% NN and 60% AN for JJA of 2018). Fig. 2 & 5 shows the yield forecasts from the different fertilizer applications and planting dates compared with the climatology. SCF (normal climatology) compared over Seasonal Climate Forecast (SCF) scenario (wet), which suggests excess rainfall during cropping season, is likely to have less uncertainty in yield attributes in early and late planting dates. Mid planting yield attributes are comparatively higher in the late planting schedule followed by the early planting schedule. With increase in nitrogen dose, the yield realization also improves and all SCFs and planting schedules have a similar pattern to follow.

The mid planting schedule under normal climatology appears to be a normal-like distribution with high degree of uncertainty suggesting mixed instances of frequent failures and near

**Table 3:** Recommended risk management strategies under different tercile based Seasonal Climate Forecast (SCFs)

Strategies	SCFs			
	Drier Forecast 2017	Wetter Forecast 2018	Normal Forecast 2019	Present Forecast 2020
80 kg N/ha+ Early Planting	↓	↓	↓	↓
120 kg N/ha + Early Planting	↓	↓	↓	↓
160 kg N/ha + Early Planting	↓	↓	↓	↓
200 kg N/ha + Early Planting	↓	↓	↑	↓
80 kg N/ha + Mid Planting	↓	↓	↓	↓
120 kg N/ha + Mid Planting	↓	↓	↓	↓
160 kg N/ha + Mid Planting	↓	↓	↓	↓
200 kg N/ha + Mid Planting	↑	↓	↓	↑
80 kg N/ha + Late Planting	↓	↓	↓	↓
120 kg N/ha + Late Planting	↓	↓	↓	↓
160 kg N/ha + Late Planting	↓	↓	↓	↓
200 kg N/ha + Late Planting	↑	↑	↓	↓

**Note:** \*Risk management strategies; ↓: Not recommended, ↑: Recommended

**Fig. 2:** Box-plot of yield forecasts with different planting for a tercile based wet forecast (20% BN, 20% NN and 60% AN for JJA 2018)

potential yield gains. Compared to this, SCF (wet) provides a stable yield range with better affinity of the median yield representing the upper echelon of the yield values. The early planting schedule shows that the normal climatology is better than the SCF (wet) in yield realization in all the nitrogen application rates. The uncertainty in the quartile range (mid 50% of the cases) is more in SCF (wet) condition than the SCF (climatology) suggests that the intra-year variability is very high in case of SCF (wet).

In the late planting schedule, the likelihood of an SCF (wet) condition is beneficial for yield realization over the normal climatology. This may be due to the reason that the late planting

schedule is likely to extend the critical development stages beyond the favourable crop growth window under a normal climatology causing yield penalty, which may be due to an impending water stress. An SCF (wet) scenario probably offset the water stress due to its complimentary wet regime during that critical period. SCF (wet) scenario exhibits a higher uncertainty beyond the median yield values with increase in nitrogen doses. This suggests likelihood of a differential variability of nitrogen due to a wet condition. A potential yield of close to  $\sim 6 \text{ t ha}^{-1}$  is achievable in SCF (wet) scenario with a nitrogen dose of  $200 \text{ kg ha}^{-1}$ .

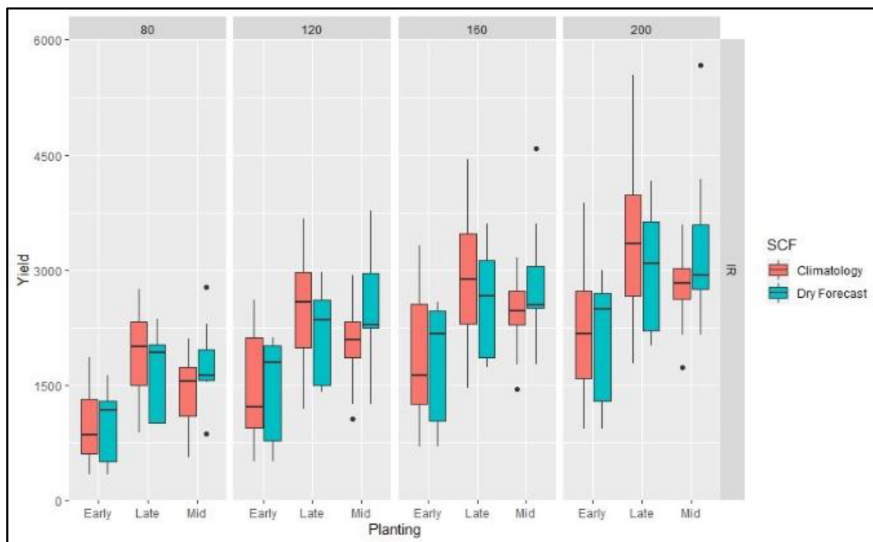


Fig. 3: Box-plot of yield forecasts with different planting windows and different fertilizer application for a tercile based dry forecast (60% BN, 20% NN and 20% AN for JJA 2017)

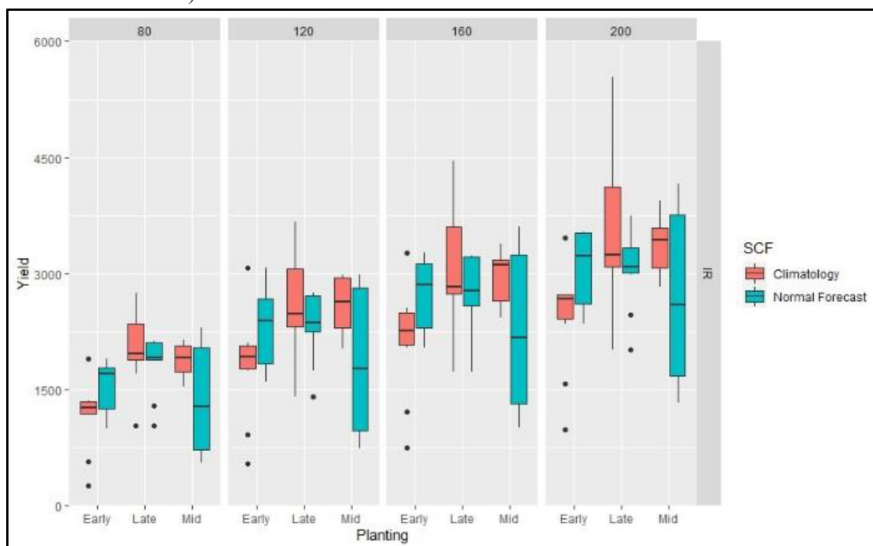


Fig. 4: Box-plot of yield forecasts with different planting windows and different fertilizer application for a normal tercile forecast (20% BN, 60% NN and 20% AN for JJA 2019).

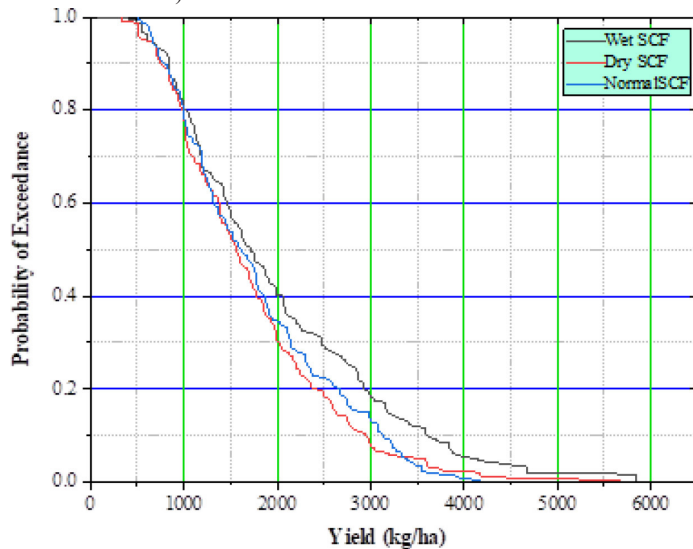
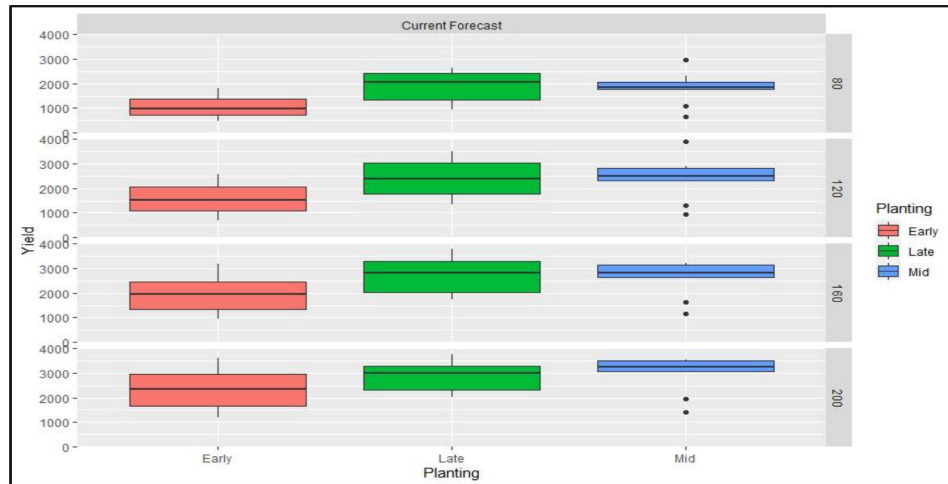
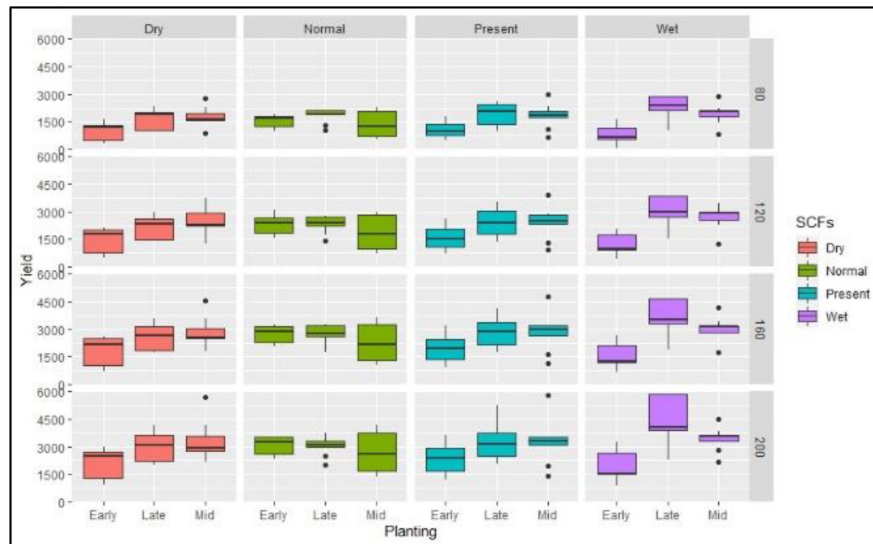


Fig. 5: Exceedance distribution of yield under the different SCFs





**Fig. 6:** Box-plot of yield forecasts with different planting windows (Early, Mid and Late) and different fertilizer application (80, 120, 160 200 kg ha<sup>-1</sup>) for a present tercile forecast (30% BN, 30% NN and 40% AN for JJA 2020)



**Fig. 7:** Comparison of predicted yield box-plot under different SCFs

#### *Effect of different planting dates and fertilizer applications under dry forecast*

To see the effect of planting dates and fertilizer application in dry season 2017 and its climatology were simulated with 03 transplanting dates and 04 fertilizer application. The obtained result revealed that early and mid-planting, the likelihood of an SCF (dry) condition is beneficial for yield realization over the normal climatology as shown in Fig. 3 & 6. This may be due to the reason that rainfall in the month of July may benefited during the development stage. Lack of irrigation and drier weather, extremely low yields were obtained especially with early- planting. The late plating of rice shows that the normal climatology is better than the SCF (dry) in yield realization in all the nitrogen application rates. This may due the impact of strong solar radiation in the early stages compared to the climatology. Overall late planting of rice obtained higher yield (3100 kg ha<sup>-1</sup>) attributes with 200 kg ha<sup>-1</sup> of nitrogen fertilizer followed by the mid planting schedule. However, yield (3450 kg ha<sup>-1</sup>) under climatology is more than SCF (dry).

#### *Effect different planting dates and fertilizer applications under normal forecast*

Under SCF (normal), plating dates and fertilizer application were simulated for the JJA 2019. The early planting of rice predicted optimum planting schedule with high yield attributes under SCF (normal) and gave more yield as comaped to climatology. However, mid and late plating showed that the normal climatology is better than the SCF (normal) in yield realization in all the nitrogen application rates. From the Fig. 4 & 5, it can we seen that the highest yield was predicted with early planting followed by late plating. Lowest yield was predicted under mid plating with high uncertainty.

#### *Effect different planting dates and fertilizer applications in present forecast*

Diferent risk management scenarios for present SCF (i.e., for 2020) were simulated, to identify the best risk management

strategies. Result showed that planting of rice on 5<sup>th</sup> July 2020 under the SCF (present) predicted low uncertainty with high mean yields as compared to the early (15<sup>th</sup> June 2020) and late (05<sup>th</sup> July 2020) planting. As shown in Fig. 6, higher predicted mean yield was observed as more fertilizer was applied. However, beyond a threshold fertilizer level, decrease in yield and gross income may incurred.

#### **Overall comparisons of different seasonal climate forecasts (SCFs)**

Comparison of 04 different seasonal climate forecast (SCFs) was done to understand the effect of SCFs in the predicted mean yield. As shown in Fig 7, the late planting of rice predicted highest yield (3800 kg ha<sup>-1</sup>) with high variability under SCF (wet) and 200 kg ha<sup>-1</sup> application of nitrogen fertilizer. Similarly, for SCF (dry), the late planting of rice obtained higher yield attributes with 200 kg ha<sup>-1</sup> of nitrogen fertilizer. However, yield under climatology is more than SCF (dry). When the SCF for JJA 2019 was simulated as a SCF (normal), the planting of rice in the early season predicted high yield (3300 kg ha<sup>-1</sup>) with low uncertainty. Late planting (25<sup>th</sup> July 2020) and 200 kg ha<sup>-1</sup> application of fertilizer under present SCF was predicted high yield (3400 kg ha<sup>-1</sup>) with low uncertainty. Recommended risk management strategies under different tercile based Seasonal Climate Forecast (SCFs) are shown in Table 3.

#### **CONCLUSIONS**

In this study, available SCFs were disaggregated using FRresampler1 method to run the simulation for the rice yield (cultivar PR 114) for best risk management strategies. Result from this study showed that the late planting schedule, the likelihood of an SCF (wet) condition is beneficial for yield realization over the normal climatology. Under the dry SCF, the early and mid-planting of rice predicted higher yield attributes as compared to climatology. However, late planting of rice showed that the normal climatology is better than the SCF (dry) in yield realization in all the nitrogen application rates. This may be due to the impact of strong solar radiation in the early stages compared to the climatology. The planting of rice on the 15<sup>th</sup> June (early planting) under normal SCF showed higher yield attributes with low uncertainty in the yield distribution as compared to its climatology. Based on the predicted yield under different SCFs scenarios, it has been suggested that if the future climate prediction is wet and dry, late planting of rice should be preferred. Whereas, under SCF (normal) future prediction, early planting of rice may offset the climatic risk. The implication of present findings would be helpful in selection of optimum planting dates of rice according to climate prediction for obtaining potential rice yield in the rainfed area. This study also confirms that the tercile based SCFs with DSSAT crop simulation model can be employed for prediction of rice yield precisely.

#### **ACKNOWLEDGEMENTS**

Authors are thankful to the Asia Program Leader, CCAFS, BISA, CIMMYT, New Delhi and Director, ICAR-IARI, New Delhi for their endless help throughout the study.

**Conflict of Interest Statement:** The author(s) declare(s) that there is

no conflict of interest.

**Disclaimer:** The contents, opinions, and views expressed in the research article published in the Journal of Agrometeorology are the views of the authors and do not necessarily reflect the views of the organizations they belong to.

**Publisher's Note:** The periodical remains neutral with regard to jurisdictional claims in published maps and institutional affiliations.

#### **REFERENCES**

- Ahmad, S., Ahmad, A., Soler, C.M.T., Ali, H., Muhammad, Z.U.H., Anothai, J., Hussain, A., Hoogenboom, G., Hasanuzzaman, M. (2012). Application of the CSM-CERES-Rice model for evaluation of plant density and nitrogen management of fine transplanted rice for an irrigated semiarid environment. *Prec. Agric.*, 13:200-218. <https://doi.org/10.1007/s11119-011-9238-1>
- Alejo, L.A. (2020). Assessing the impacts of climate change on aerobic rice production using the DSSAT-CERES-Rice model. *J. Water Climate Change*, 12 (3): 696–708 <https://doi.org/10.2166/wcc.2020.286>
- Capa, M., Ines, A., Baethgen, W., Rodriguez-Fonseca, B., Han, E., and Ruiz-Ramos, M. (2015). Linking seasonal climate forecasts with crop models in Iberian Peninsula. Vienna, Austria, p.5278
- Dar, M.U.D., Aggarwal, R., and Kaur, S. (2017). Effect of climate change scenarios on yield and water balance components in rice-wheat cropping system in Central Punjab, India. *J. Agrometeorol.*, 19(3):226-229.
- Eitzinger, A., Läderach, P., Rodriguez, B., Fisher, M., Stephen, B., Kai, S., and Schmidt, A. (2017). Assessing high-impact spots of climate change: spatial yield simulations with Decision Support System for Agrotechnology Transfer (DSSAT) model. *Mitig Adapt Strateg Glob Change.*, 22:743–760. <https://doi.org/10.1007/s11027-015-9696-2>
- Elbeltagi, A., Aslam, M.R., Mokhtar, A., Deb, P., Abubakar, G.A., Kushwaha, N.L., Venancio, L.P., Malik, A., Kumar, N., Deng, J. (2020). Spatial and temporal variability analysis of green and blue evapotranspiration of wheat in the Egyptian Nile Delta from 1997 to 2017. *J. Hydrol.*, 594:125662. <https://doi.org/10.1016/j.jhydrol.2020.125662>
- Han, E., Ines, A.V.M., and Baethgen, W.E. (2017). Climate-Agriculture-Modeling and Decision Tool (CAMDT): A software framework for climate risk management in agriculture. *Environ. Modelling & Software*, 95:102–114. <https://doi.org/10.1016/j.envsoft.2017.06.024>
- Liu, H., Liu, H., Lei, Q., Zhai, L., Wang, H., Zhang, J., Zhu, Y., Liu, S., Li, S., Zhang, J., and Liu, X. (2017). Using the DSSAT model to simulate wheat yield and soil organic carbon under a wheat-maize cropping system in the North China Plain. *J. Integ. Agric.*, 16:2300–2307. <https://doi.org/10.1016/j.jhydrol.2020.125662>

org/10.1016/S2095-3119(17)61678-2

- Ma, H., Malone, R.W., Jiang, T., Yaob, N., Chenb, S., Songb, L., Fenga, H., Yua, Q., He, J. (2020). Estimating crop genetic parameters for DSSAT with modified PEST software., 115:126017. <https://doi.org/10.1016/j.eja.2020.126017>
- Patel, V.J., Patel, H.R. and Pandey V. (2008). Estimation of wheat yield gap in Anand and Panchmahal districts using CERES-wheat model. *J. Agrometeorol.*, 10 (special issue): 393-397.
- Patel, H.R. and Shekh, A.M. (2006). Yield gap and trend analysis of wheat using CERES-wheat model in three districts of Gujarat state. *J. Agrometeorol.*, 8 (1): 28- 39.
- Pathak, H., Timsina, J., Humphreys, E., Godwin, D.C., Singh, B., Shukla, A.K., Singh, U., and Matthews, R.R. (2004). Simulation of rice crop performance and water and N dynamics, and methane emissions for rice in northwest India using CSM-CERESRice model. CSIRO Land and Water, Griffith, NSW 2680, Australia
- Pathak, H., Tripathi,R., Jambhulkar,N.N., Bisen, J.P., and Panda, B.B. (2020). Eco-regional rice farming for enhancing productivity, profitability and sustainability. NRRI Research Bulletin No. 22, ICAR-National Rice Research Institute, Cuttack 753006, Odisha, India. pp 28.
- Singh, K., McClean, C.J., Bükér, P., Hartley, S.E., and Hill, J.K. (2017). Mapping regional risks from climate change for rainfed rice cultivation in India. *Agric. Syst.*, 156:76–84. <https://doi.org/10.1016/j.agry.2017.05.009>
- Vilayvong, S., Banterng, P., Patanothai, A., Pannangpetch, K. (2015). CSM-CERES-Rice model to determine management strategies for lowland rice production. *Scientia Agricola.*, 72:229–236. <https://doi.org/10.1590/0103-9016-2013-0380>