

Accepted for publication in *Neuroscience Letters*

**\*Note: This is an uncorrected version of an author's manuscript accepted for publication.\*Copyediting, typesetting, and review of the resulting proofs will be undertaken on this manuscript before final publication. During production and pre-press, errors may be discovered that could affect the content.**

**Effects of acute transcranial direct current stimulation in hot and cold working memory tasks in healthy and depressed subjects**

Marina L Moreno <sup>1</sup>, BS; Marie-Anne Vanderhasselt <sup>2</sup>, PhD; Andre F Carvalho, MD, PhD <sup>3</sup>

Adriano H Moffa <sup>1</sup>, BS; Paulo A Lotufo <sup>1</sup>, MD, PhD; Isabela M Benseñor <sup>1</sup>, MD, PhD; Andre

R Brunoni <sup>1,4</sup>, MD, PhD

(1) Interdisciplinary Center for Applied Neuromodulation (CINA), University Hospital, University of São Paulo, São Paulo, Brazil.

(2) Department of Experimental Clinical and Health Psychology, Ghent University, Ghent, Belgium.

(3) Department of Clinical Medicine and Translational Psychiatry Research Group, Faculty of Medicine, Federal University of Ceará, Fortaleza, Brazil.

(4) Service of Interdisciplinary Neuromodulation (SIN), Laboratory of Neurosciences (LIM-27), Department and Institute of Psychiatry, University of São Paulo, São Paulo, Brazil.

**Running title:** Effects of tDCS in cognition.

**Corresponding author:** Andre Russowsky Brunoni, MD, PhD; Interdisciplinary Center for Applied Neuromodulation; Av. Professor Lineu Prestes, 2565, 3o andar, CEP 05508-000; São Paulo (SP), Brazil, e-mail: [brunoni@usp.br](mailto:brunoni@usp.br); Tel/Fax: +55 11 3091-9241.

## **Abstract**

Dorsolateral prefrontal cortex (DLPFC) hypoactivity and subcortical hyperactivity have been associated to cognitive impairment for non-emotional (“cold”) and emotional (“hot”) working memory tasks in major depressive disorder (MDD). We investigated whether an increase of DLPFC activity using transcranial direct current stimulation (tDCS) would differently influence the performance in working memory tasks in depressed and healthy subjects. Forty young adult participants (20 with MDD and 20 healthy controls) were randomized to a single, sham-controlled, bifrontal (left anodal / right cathodal), 2mA, 30-min tDCS session in a parallel design. The n-back and the Internal Shift Task (IST) were used as proxies of cold and hot working memory performance, respectively. Active tDCS compared to sham promoted more accurate and faster responses to the n-back task for both patients and controls. Conversely, only patients presented an improvement in response times for the IST task. Our findings suggest that the mechanisms of tDCS in MDD involve modulation of both cold and hot working memory. We discuss these findings considering the modulatory top-down effects of tDCS on subcortical structures via prefrontal activation, and how spreading of activation might be different for healthy volunteers versus depressed patients. We also discuss the role of tDCS in cognitive amelioration for depressed patients. Finally, the distinct effects of tDCS in the “hot” cognition task for healthy and depressed participants are indicative that tDCS outcomes are also regulated by differences in baseline activity of the stimulated network.

## **Keywords**

Transcranial direct current stimulation; major depressive disorder; working memory; cognition.

## **List of abbreviations**

Major depressive disorder (MDD); dorsolateral prefrontal cortex (DLPFC); transcranial direct current stimulation (tDCS); Internal Shift Task (IST); Mini International Neuropsychiatric Interview (MINI); Hamilton Depression Rating Scale (HDRS); analyses of variance (ANOVAs); response times (RTs); standard deviation (SD).

## **Highlights**

MDD patients present non-emotional and emotional working memory impairment.

The DLPFC is associated with MDD and cognitive deficits.

We used tDCS to acutely increase DLPFC activity in MDD and controls.

MDD patients presented improvement in emotional and non-emotional cognition.

We discuss pathophysiological mechanisms and clinical implications of our findings.

## 1. Introduction

MDD is a severe and chronic psychiatric condition with high lifetime prevalence and refractoriness rates [1]. Depressed patients present cognitive deficits in several domains (i.e. psychomotor speed, executive functions, memory and attention) (27), ~~even in remitted states after antidepressant treatment.~~ Factors like older age and depression severity are related to greater cognitive deficits and lower remission rates, even after antidepressant treatment [27]. These issues highlight the importance of investigating cognitive deficits in MDD.

At the neural level, the frontolimbic system, which encompasses the DLPFC, the amygdala, the anterior cingulate cortex and other brain areas, regulates cognitive and emotional processing [20], such as behavioral management and disinhibition (Krueger, 2011). Hypoactivity of the DLPFC and hyperactivity of subcortical structures are associated to MDD and its cognitive deficits [14, 18]. Moreover, two modalities of impaired cognitive processing are observed in MDD, namely 'cold' and 'hot' cognition, which refer to information processing in the absence or presence of emotional influence, respectively [19]. Non-emotion and emotion-laden tasks recruit and activate distinct yet overlapping neural networks. For example, in an fMRI study evaluating non-emotional and emotional inhibitory control, emotional inhibition engaged not only the neural circuitry involved in the non-emotional task, but also the paralimbic region and part of the anterior cingulate cortex [22].

However, research efforts on this topic have been to a large extent correlational, while the causal relationship between cortical activity and non-emotional and emotional processing in MDD deserves further investigation. In this context, tDCS is a useful tool to induce prefrontal cortex activation. TDCS is a non-invasive neuromodulatory technique that employs weak direct currents (0.5–2 mA) to modulate brain activity [4] by regulating the frequency of action potentials triggered in the neuronal network [3]. Previous reports demonstrated that

anodal tDCS over the DLPFC exerts beneficial effects in cognitive tasks [5], although most of them were methodologically limited [7, 16, 24, 28].

We therefore employed tDCS to induce prefrontal activation in depressed and healthy subjects, exploring its effects on emotion-laden and non-emotional working memory tasks. The bifrontal tDCS montage that was already demonstrated to be an effective montage for the treatment of the acute depressive episode [15] was used, besides positive effects in emotional and non-emotional cognition in depressed patients after tDCS[2,16,24] For the non-emotional working memory task, we used the n-back task that assesses the short-term storage, selective and sustained attention, online manipulation of information in a mental workspace and is robustly associated with prefrontal cortex activation.N-back have been studied for several authors that related impairment of performance in MDD patients[5][17](Diamond,2013). For the emotional working memory task we used the IST that evaluates the ability to update and shift between emotional representations in working memory [11].

### *1.1 Study hypothesis*

- a) For the emotional task, tDCS would exert modulatory effects only in depressed compared to healthy subjects, considering that the former presents DLPFC hypoactivity that could be enhanced via direct current stimulation.
- b) For the non-emotional task, the effects of tDCS would be exhibited in both depressed and healthy subjects.
- c) At baseline, controls would have greater performance compared to patients in both non-emotional and emotional working memory tasks.

## **2. Material and Methods**

## *2.1 Subjects*

This study was approved by the local and national Ethics Committee and all participants provided informed consent. Forty participants were recruited, 20 with depression and 20 controls. Although we only recruited participants aged between 18 to 40 years-old, controls were slightly younger than patients (Table 1). For this reason, all analyses were controlled for age. Certified psychiatrists screened the participants using the Portuguese-translated version of the MINI [23] and assessed depression severity with the Portuguese-version of the 17-items HDRS [13]. (Table 1)

(Table 1)

The depressed subjects were recruited from an ongoing non-inferiority, triple-arm, randomized trial (The Escitalopram vs. Electric Current Therapy for Treating Depression Clinical Study, ELECT-TDCS, clinicaltrials.gov: NCT01894815) (Brunoni et al., in press). Depressed subjects fulfilled the main eligibility criteria: (1) were antidepressant-free for at least 3 weeks (5 weeks for fluoxetine); (2) presented score of at least 17 on the HDRS-17; (3) aged between 18 and 40 years-old; (4) at least 12 years of schooling; (5) absence of other medical and psychiatric diagnoses (except for anxiety disorders whether in comorbidity with MDD). Healthy controls were matched according to gender and years of schooling, and were recruited among students and civil servants from the study site, in the University of São Paulo (São Paulo, Brazil).

## *2.2 Design*

We used a double-blinded, sham-controlled, randomized, repeated-measures, parallel (between-subjects), single-session design. Each participant executed two computerized evaluations: the first was performed before the tDCS session and the second after the tDCS session was finished, which lasted 30 minutes.

### 2.3 Procedures

The n-back and the IST were programmed in E-prime 2.0 software (Psychology Software, Tools Inc, Pittsburgh, Pennsylvania, USA) (Figure 1). Images were presented on a 15-inch LCD computer screen and participants were seated at a distance of 60cm from the screen. Before the test, a practice session is done to ensure that participants correctly understood the instructions – if not, the practice session would be re-run. Participants were instructed to respond as fast and accurately as possible.

(Figure 1)

We used a 2-back task, presenting 3 blocks of 30 letters (from A to Z), each one being displayed on the screen for 500 ms, with an interstimulus interval of 3000 ms. A correct response was performed when the subject identified the same stimuli presented two positions before.

The IST stimuli were angry and neutral faces of males and females from the Karolinska Directed Emotional Faces [9]. Participants are asked to complete two separate (in counterbalanced order) task conditions: a non-emotional (*gender*) and an emotional (*face*). In the former, participants should focus on recognizing whether the face was from a male or female, whereas in the latter they should identify whether the face was neutral or angry. During each block, they should count and mentally update the number of faces presented in each category (male/female or angry/neutral). After each face was presented, participants should press the spacebar when the count was mentally updated. Then, the next face appears after 200ms. Participants should report the number of faces at the end of a block to encourage a consistent counting strategy.



The IST has shift and no-shift trials. In the former case, the target trial has a different category than the preceding trial (e.g., in the emotion condition an angry face following a neutral face). In the latter case, the target trial is similar to the preceding trial. The session consisted of 12 blocks of items, each one having a random number of 10 to 14 trials.

#### 2.4 Transcranial direct current stimulation

We used Soterix Medical tDCS devices (Soterix Medical, New York, USA). The anode and the cathode were placed over the left and right DLPFC, respectively. The electrodes were positioned according to the “OLE-system” through the use of a specific headgear [21]. We used a current intensity of 2mA, electrode size of 25cm<sup>2</sup> and session duration of 30 minutes. Sham consisted of a brief period of 2mA stimulation for 30 seconds.

#### 2.5 Statistical analysis

Analyses were done with Stata 12 (Statacorp, College Station, TX, USA). Results were significant at  $p \leq 0.05$ . Effect sizes were Cohen’s  $d$  (small, medium and large effects correspond to values of 0.2, 0.5 and 0.8, respectively) and  $p\eta^2$  (0.02, 0.13 and 0.26 to small, medium and large effects, respectively) [10]. In analyses using ANOVAs, significant interactions were followed by t-tests. Whenever sphericity was violated, the Greenhouse-Geisser correction was applied. Normality of data distribution was verified using the Shapiro-Wilk test. Post-hoc power analysis values ( $\beta$ ) are also presented.

Student’s-t-tests and Chi-square tests were used to compare baseline characteristics between healthy controls and depressed subjects, and also for comparing active/sham stimulation within group condition at baseline.

For the n-back task, the residual score changes in accuracy (i.e., responding to the target or omitting the response to a non-target) and RT were the dependent variables

evaluated. Higher accuracy values represent improvement, whereas lower (including negative) RTs represent faster response. The independent variables were: tDCS (active/sham stimulation), group (healthy/depressed subjects) and age (continuous). A mixed-model ANOVA was employed.

For the IST, the RT was obtained after each stimulus. For each participant, the median RT (calculated per trial type: gender/emotion; shift/no-shift) was used. After, we estimated the changes in performance before to after stimulation using the residual score changes, which is more advantageous to the absolute change (i.e., pre- minus post- RT), as it accounts for issues such as differences in baseline scores (as this variable was not controlled in our study design) and effects of regression to the mean [26]. The residual score change was calculated in two steps: 1) a linear regression between post- and pre-RT was performed and the predicted scores were obtained; 2) the difference between the observed and predicted values were obtained.

In the next step, we calculated the switch costs, which index the efficiency of switching between mental representations held in working memory [11], between each condition (e.g. emotional switch cost = emotion/shift minus emotion/no-shift). As we calculated the switch cost as the difference between residual score changes of shift minus no-shift trials, positive values represent faster response, whereas negative values represent slower response.

Finally, the dependent variable was the changes in switch cost and the independent variables were tDCS, group, condition (within-subjects: gender/face conditions) and age (continuous). A repeated-measures, mixed-model ANOVA was employed. According to previous literature, all responses (whether correct or incorrect) were included [11, 12].

In exploratory analyses, we introduced gender as a factor in our ANOVA models. Also, we performed regression analyses to investigate whether depression scores were associated to cognitive performance in the performed tasks.

### 3. Results

#### 3.1 Non-emotional (cold) working memory task

At baseline, controls outperformed patients in the accuracy of the n-back task (mean difference=0.078, SD=0.11, Cohen's  $d=0.69$ ,  $p=0.02$ ,  $\beta=0.77$ ), confirming the cognitive deficits observed in non-emotional working memory tasks observed in depression. We also observed a trend for MDD patients being slower than controls (mean difference= 112ms, SD=205,  $p=0.06$ ,  $\beta=0.46$ ).

The mixed-model ANOVA for accuracy revealed significant main effects for tDCS ( $F_{1,37} = 4.6$ ,  $p=0.04$ ,  $p\eta^2=0.09$ ,  $\beta=0.55$ ) but not for group or the two-way interaction ( $F_s > 0.04$ ,  $p_s < 0.84$ ). We exploratory analyzed the contrasts of the interaction, finding no significant differences in the active vs. sham group in depressed patients ( $p=0.09$ ,  $\beta=0.31$ ).

The mixed-model ANOVA for RT revealed similar results, with a main effect of tDCS ( $F_{1,37} = 6.4$ ,  $p=0.02$ ,  $p\eta^2=0.106$ ,  $\beta=0.7$ ), but not for group or the two-way interaction ( $F_s > 0.09$ ,  $p_s < 0.76$ ) – i.e., healthy and depressed subjects receiving active tDCS presented an improvement in accuracy and RT during the n-back, compared to those receiving sham tDCS (Figure 2). We exploratory analyzed the contrasts of the interaction, finding no significant differences in the active vs. sham group in depressed patients ( $p=0.14$ ,  $\beta=0.32$ ).

(Figure 2)

### 3.2 Emotional (hot) working memory task

At baseline, patients present non-significant numerically higher switch costs than controls ( $ps > 0.38$ ).

The mixed-model ANOVA observed no significant main effects for tDCS and group ( $F_s > 0.34$ ,  $ps > 0.56$ ) and a significant main effect for condition ( $F_{1,72} = 167.59$ ,  $p < 0.01$ ,  $p\eta^2 = 0.396$ ,  $\beta = 0.95$ ), i.e., patients were overall slower in the face (vs. gender) tasks. A significant interaction was observed between group and condition ( $F_{1,72} = 4.62$ ,  $p = 0.04$ ,  $\beta = 0.52$ ), showing that both patients and controls were overall slower in the face vs. gender conditions. Finally, the three-way ANOVA (tDCS, group, condition) was significant ( $F_{1,72} = 4.64$ ,  $p = 0.03$ ,  $\beta = 0.56$ ). Follow-up tests revealed that depressed patients receiving active tDCS were faster over time for the face (emotional) condition ( $t = 2.16$ , Cohen's  $d = 0.53$ ,  $p = 0.03$ ,  $\beta = 0.57$ ) only. (Figure 3)

(Figure 3)

### 3.3 Exploratory analyses

Additional exploratory analyses did not reveal a relationship between depression scores and cognitive performance in the depressed patients in the sham and active groups ( $ps > 0.05$ ). Also, the factor gender was not significant in our ANOVA models ( $ps > 0.05$ ).

## 4. Discussion

In this first sham-controlled study evaluating immediate tDCS changes in antidepressant-free MDD patients and healthy controls; a single, sham-controlled session of

bifrontal tDCS (anode-left / cathode-right) over the DLPFC acutely improved (1) a “cold” working memory task (n-back) in healthy subjects and depressed patients; (2) a “hot” working memory task (IST) only in depressed patients. Furthermore, at baseline, depressed patients performed worse in the n-back task compared to healthy controls. Also, we did not observe a worse performance for depressed patients in the IST task at baseline as predicted.

Our findings in MDD patients are in accordance to previous literature showing that tDCS increased performance in the n-back task [16], ameliorated emotional inhibitory control [28], enhanced performance in the Emotional Stroop Task [8] and in the affective go/no-go task [2]. Thus, tDCS effects in depression might not be limited to the DLPFC, but also extends to the broader cortico-subcortical network associated with cognitive dysfunction in MDD and regulation of emotionally loaded information processing. Further studies using neuroimaging scans should be performed to confirm whether our results are associated to specific activation of brain networks.

Previous studies suggested that tDCS has pro-cognitive effects in MDD, although they were hindered by different methodological issues such as the absence of a control group, concomitant antidepressant use and a lack of sensitivity to detect cognitive changes due to task choice [24]. Therefore, our findings of acute working memory improvement after a single tDCS session confirm and expand the evidence regarding the potential benefits of tDCS on cognitive amelioration in MDD.

In healthy subjects, we found tDCS effects only after the n-back (non-emotional) task, but not after the IST (emotional task). The effects of tDCS over the prefrontal cortex in non-neuropsychiatric samples have yielded mixed results [25]. The lack of effects in the hot working memory task might also be explained by a “ceiling” effect in healthy samples that already adequately process emotional content, leaving little room for improvement for the task. It is also possible that subjective (self-report) mood evaluation is not sensible enough, at

least in healthy volunteers, to index tDCS effects. For instance, in a previous study we observed [6] that tDCS did not change mood in healthy individuals, although cortisol levels and heart rate variability changed in a polarity- and valence-specific manner. Nonetheless, in the present study we did not examine the acute effects of tDCS on HDRS scores – future studies in depression could examine whether tDCS has fast antidepressant effects as observed for other novel therapies, such as ketamine.

Notwithstanding the enrollment of only antidepressant-free MDD subjects, guaranteeing that the effects observed were not confounded by pharmacotherapy and its sham-controlled design, some limitations are worth mentioning. First, no direct neuroimaging assessment was performed and therefore we could not delimit which brain structures were affected by tDCS. Second, we could not test different montages as this protocol used participants recruited for a larger study. Nonetheless, these results are valid for, at least, this bifrontal montage that is commonly used in tDCS MDD studies [15]. Finally, the study sample was relatively small; therefore some analyses might be underpowered, particularly the lack of significant differences between patients and controls in the IST task at baseline and between type of stimulation in depressed patients in the n-back task. In fact, post-hoc power analyses revealed that some analyses, particularly for estimating small and medium effect sizes, were underpowered.

In summary, bifrontal tDCS increased performance in “hot” and “cold” working memory tasks in depressed patients, even though only “cold” cognition was influenced in the control group receiving tDCS. These findings suggest that tDCS improves cognitive functions associated with key circuits involved in MDD pathophysiology and, therefore, its putative procognitive mechanisms in MDD may involve modulation of these pathways. Our results are also suggestive that tDCS exert modulatory top-down effects, probably by primary activation of the DLPFC and further down-regulation of subcortical structures. Our findings should be

integrated with other biological markers to assess the putative mechanisms of tDCS for cognitive amelioration in depression.

## **Acknowledgments**

MAV (FWO08/PDO/168) is a postdoctoral research fellow of the Research Foundation Flanders (FWO). ARB is awarded by the NARSAD (YI 2013/20493), the National Council for Scientific and Technological Development (CNPq, 2013/470904) and the São Paulo State Foundation (FAPESP, JP 2012/20911-5) grants. MLM is supported by a Scientific Initiation fellowship from FAPESP (2013/19566-4). AHM is supported by a CNPq Master's fellowships. AFC is supported by a research fellowship award from the Conselho Nacional de Desenvolvimento Científico e Tecnológico (CNPq, Brazil; level II).

## **References**

- [1] L. Andrade, J.J. Caraveo-Anduaga, P. Berglund, R.V. Bijl, R. De Graaf, W. Vollebergh, E. Dragomirecka, R. Kohn, M. Keller, R.C. Kessler, N. Kawakami, C. Kilic, D. Offord, T.B. Ustun, H.U. Wittchen, The epidemiology of major depressive episodes: results from the International Consortium of Psychiatric Epidemiology (ICPE) Surveys, *Int J Methods Psychiatr Res* 12 (2003) 3-21.
- [2] P.S. Boggio, F. Bermanpohl, A.O. Vergara, A.L. Muniz, F.H. Nahas, P.B. Leme, S.P. Rigonatti, F. Fregni, Go-no-go task performance improvement after anodal transcranial DC stimulation of the left dorsolateral prefrontal cortex in major depression, *J Affect Disord* 101 (2007) 91-98.
- [3] A.R. Brunoni, M.A. Nitsche, N. Bolognini, M. Bikson, T. Wagner, L. Merabet, D.J. Edwards, A. Valero-Cabre, A. Rotenberg, A. Pascual-Leone, R. Ferrucci, A. Priori, P.S. Boggio, F. Fregni, Clinical research with transcranial direct current stimulation (tDCS): Challenges and future directions, *Brain Stimul.* 5 (2012) 175-195.
- [4] A.R. Brunoni, M.A. Nitsche, N. Bolognini, M. Bikson, T. Wagner, L. Merabet, D.J. Edwards, A. Valero-Cabre, A. Rotenberg, A. Pascual-Leone, R. Ferrucci, A. Priori, P.S. Boggio, F. Fregni, Clinical research with transcranial direct current stimulation (tDCS): challenges and future directions, *Brain Stimul* 5 (2012) 175-195.
- [5] A.R. Brunoni, M.A. Vanderhasselt, Working memory improvement with non-invasive brain stimulation of the dorsolateral prefrontal cortex: a systematic review and meta-analysis, *Brain Cogn* 86 (2014) 1-9.
- [6] A.R. Brunoni, M.A. Vanderhasselt, P.S. Boggio, F. Fregni, E.M. Dantas, J.G. Mill, P.A. Lotufo, I.J. Bensenor, Polarity- and valence-dependent effects of prefrontal transcranial direct current stimulation on heart rate variability and salivary cortisol, *Psychoneuroendocrinology* 38 (2013) 58-66.

- [7] A.R. Brunoni, T. Zanao, M.A. Vanderhasselt, L. Valiengo, J.F. de Oliveira, P.S. Boggio, P.A. Lotufo, I.M. Bensenor, F. Fregni, Enhancement of affective processing induced by bi-frontal transcranial direct current stimulation in patients with major depression, *Neuromodulation* (2013) [Epub ahead of print].
- [8] A.R. Brunoni, T.A. Zanao, M.A. Vanderhasselt, L. Valiengo, J.F. de Oliveira, P.S. Boggio, P.A. Lotufo, I.M. Bensenor, F. Fregni, Enhancement of Affective Processing Induced by Bifrontal Transcranial Direct Current Stimulation in Patients With Major Depression, *Neuromodulation : journal of the International Neuromodulation Society* (2013) [Epub ahead of print].
- [9] M.G. Calvo, D. Lundqvist, Facial expressions of emotion (KDEF): identification under different display-duration conditions, *Behav Res Methods* 40 (2008) 109-115.
- [10] J. Cohen, *Statistical Power Analysis for the Behavioral Sciences* Lawrence Erlbaum Associates, Inc., New Jersey, 1988.
- [11] E. De Lissnyder, E.H. Koster, J. Everaert, R. Schacht, D. Van den Abeele, R. De Raedt, Internal cognitive control in clinical depression: general but no emotion-specific impairments, *Psychiatry research* 199 (2012) 124-130.
- [12] E. De Lissnyder, E.H. Koster, L. Goubert, T. Onraedt, M.A. Vanderhasselt, R. De Raedt, Cognitive control moderates the association between stress and rumination, *J Behav Ther Exp Psychiatry* 43 (2012) 519-525.
- [13] C. Gorenstein, L.H.S.G. Andrade, A.W. Zuardi, *Escalas de Avaliação Clínica em Psiquiatria e Psicofarmacologia*, Sao Paulo, 2000.
- [14] Z. Long, X. Duan, Y. Wang, F. Liu, L. Zeng, J.P. Zhao, H. Chen, Disrupted structural connectivity network in treatment-naïve depression, *Prog Neuropsychopharmacol Biol Psychiatry* 56 (2015) 18-26.
- [15] A. Moffa, L. Valiengo, P. Shiozawa, A.R. Brunoni, Novel neurotherapeutics in psychiatry: use and rationale of transcranial direct current stimulation in major depressive disorder  
*Rev Psiq Clín* 41 (2014) 15-20.
- [16] J.F. Oliveira, T.A. Zanao, L. Valiengo, P.A. Lotufo, I.M. Bensenor, F. Fregni, A.R. Brunoni, Acute working memory improvement after tDCS in antidepressant-free patients with major depressive disorder, *Neurosci Lett* 537 (2013) 60-64.
- [1] A.M. Owen, K.M. McMillan, A.R. Laird, E. Bullmore, N-back working memory paradigm: a meta-analysis of normative functional neuroimaging studies, *Human brain mapping* 25 (2005) 46-59.
- [18] J.P. Roiser, R. Elliott, B.J. Sahakian, Cognitive mechanisms of treatment in depression, *Neuropsychopharmacology : official publication of the American College of Neuropsychopharmacology* 37 (2012) 117-136.
- [19] J.P. Roiser, B.J. Sahakian, Hot and cold cognition in depression, *CNS Spectr* 18 (2013) 139-149.
- [20] C.D. Salzman, S. Fusi, Emotion, cognition, and mental state representation in amygdala and prefrontal cortex, *Annu Rev Neurosci* 33 (2010) 173-202.
- [21] O. Seibt, A.R. Brunoni, Y. Huang, M. Bikson, The pursuit of DLPFC: Non-neuronavigated methods to target the left dorsolateral prefrontal cortex with symmetric bicephalic transcranial Direct Current Stimulation (tDCS), *Brain Stimul.* (in press ).



- [22] K.M. Shafritz, S.H. Collins, H.P. Blumberg, The interaction of emotional and cognitive neural systems in emotionally guided response inhibition, *Neuroimage* 31 (2006) 468-475.
- [23] D.V. Sheehan, Y. Lecrubier, K.H. Sheehan, P. Amorim, J. Janavs, E. Weiller, T. Hergueta, R. Baker, G.C. Dunbar, The Mini-International Neuropsychiatric Interview (M.I.N.I.): the development and validation of a structured diagnostic psychiatric interview for DSM-IV and ICD-10, *J Clin Psychiatry* 59 Suppl 20 (1998) 22-33;quiz 34-57.
- [24] G. Tortella, P.M. Selingardi, M.L. Moreno, B.P. Veronezi, A.R. Brunoni, Does non-invasive brain stimulation improve cognition in major depressive disorder? A systematic review, *CNS & neurological disorders drug targets* (2014).
- [25] S. Tremblay, J.F. Lepage, A. Latulipe-Loiselle, F. Fregni, A. Pascual-Leone, H. Theoret, The Uncertain Outcome of Prefrontal tDCS, *Brain Stimul* 7 (2014) 773-783.
- [26] J. Twisk, K. Proper, Evaluation of the results of a randomized controlled trial: how to define changes between baseline and follow-up, *J Clin Epidemiol* 57 (2004) 223-228.
- [27] S. Wagner, B. Doering, I. Helmreich, K. Lieb, A. Tadic, A meta-analysis of executive dysfunctions in unipolar major depressive disorder without psychotic symptoms and their changes during antidepressant treatment, *Acta psychiatrica Scandinavica* 125 (2012) 281-292.
- [28] L. Wolkenstein, C. Plewnia, Amelioration of cognitive control in depression by transcranial direct current stimulation, *Biol Psychiatry* 73 (2013) 646-651.

Diamond A. Executive functions. *Annu Rev Psychol.* 2013;64:135-68. doi: 10.1146/annurev-psych-113011-143750. Epub 2012 Sep 27.

Krueger CE, Laluz V, Rosen HJ, Neuhaus JM, Miller BL, Kramer JH. Double dissociation in the anatomy of socioemotional disinhibition and executive functioning in dementia. *Neuropsychology.* 2011 Mar;25(2):249-59. doi: 10.1037/a0021681

Table 1. Sample characteristics at baseline.

	Healthy subjects (n=20)			MDD subjects (n=20)			Healthy vs. MDD (* )
	Active	sham	p	Active	sham	p	p
Gender	5/5	5/5	--	5/5	5/5	--	--

(M/F)							
Age (mean, SD)	26.3 (7.8)	26.6 (8.8)	0.91	34.5 (4.1)	32 (4.7)	0.17	<b>&lt;0.01</b>
HDRS-17	--	--	--	24 (5.4)	21.5 (2.5)	0.14	--
<i>n-back</i>							
Accuracy	0.91 (0.07)	0.93 (0.06)	0.69	0.81 (0.18)	0.87 (0.08)	0.36	<b>0.02</b>
RT	644 (151)	752 (207)	0.07	840 (243)	887 (115)	0.4	0.06
<i>IST - Switch costs</i>							
Gender	445 (281)	400 (201)	0.42	428 (338)	372 (237)	0.39	0.38
Face	307 (186)	436 (268)	0.09	409 (246)	388 (232)	0.7	0.41

(\* ) comparison corrected by age. RT, response time; M/F, male / female; HDRS-17, Hamilton Depression Rating Scale, 17-items version; IST, internal shift task. Data in the table are mean (standard deviation).

Figure 1. Depiction of the n-back task and Internal Shift Task used in the present study.

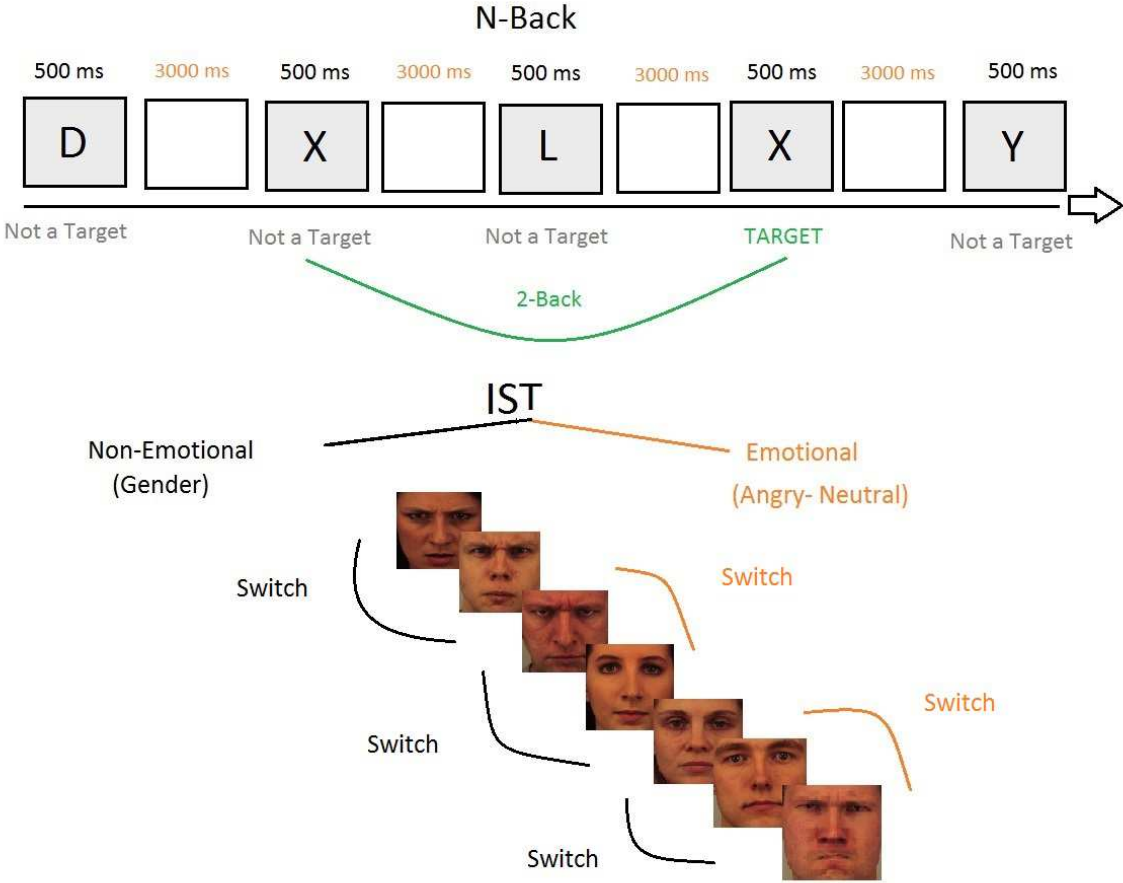
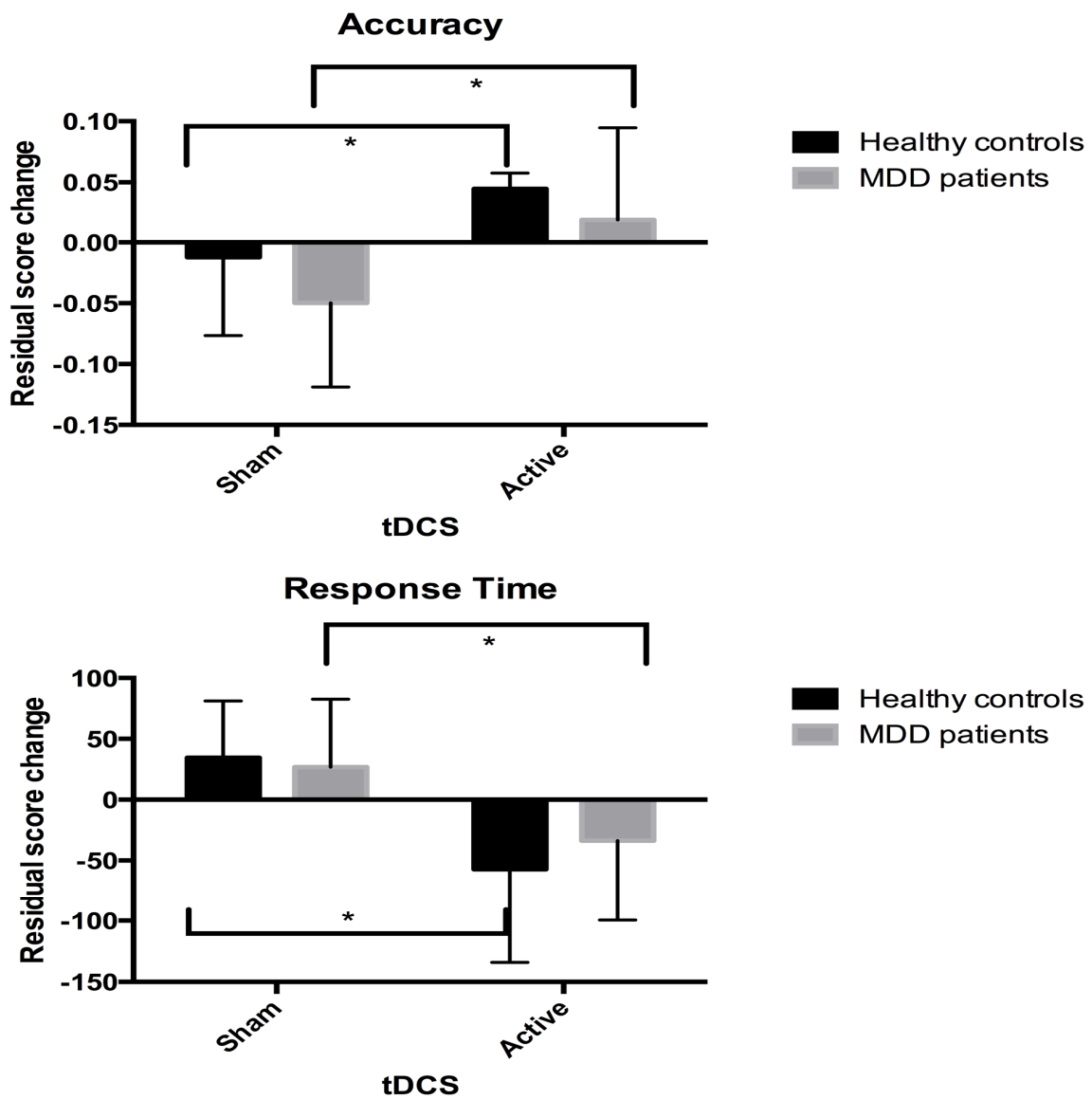
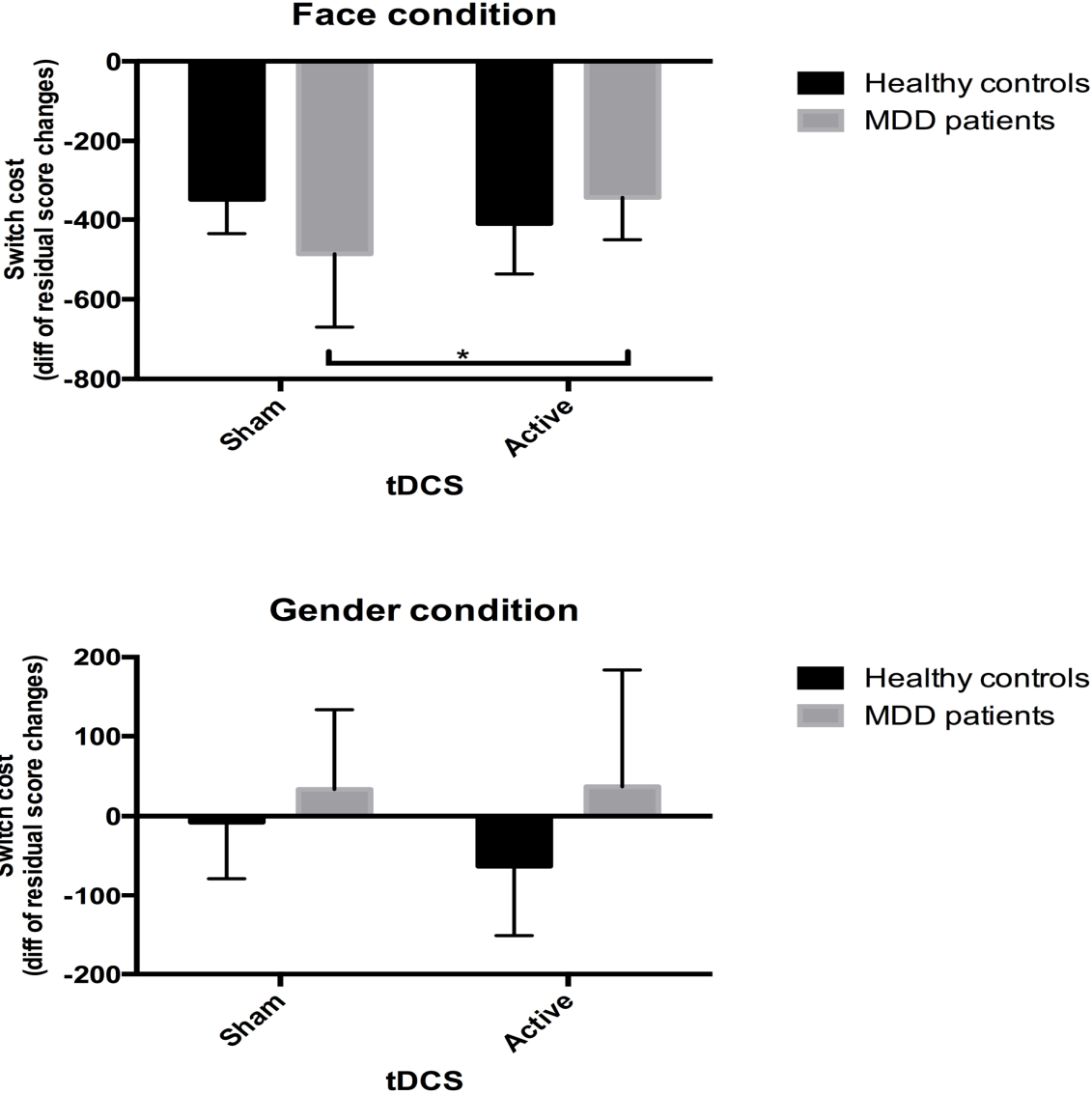


Figure 2. Performance in the n-back task.



Improvement in accuracy and response time after active tDCS compared to sham. (\*) represent significant differences at  $p < 0.05$ . Values  $> 0$  indicate improvement for accuracy whereas values  $< 0$  indicate faster response times. Bars represent 95% Confidence Interval.

Figure 3. Performance in the Internal Shift task.



Improvement after active tDCS compared to sham for the face (emotional) condition but not for the gender (non-emotional) condition. (\*) represent a significant difference at  $p < 0.05$ . Values  $> 0$  indicate faster response times. Bars represent 95% Confidence Interval.