


# External validity of clinical trials with diverse trastuzumab-based chemotherapy regimens in advanced gastroesophageal adenocarcinoma: data from the AGAMENON-SEOM registry

Paula Jimenez-Fonseca, Alberto Carmona-Bayonas, Alba Martinez-Torron, Maria Alsina, Ana Custodio, Olbia Serra, Diego Cacho Lavin, María Luisa Limón, Tamara Sauri, Flora López, Laura Visa, Mónica Granja, Nieves Martínez Lago , Virginia Arrazubi, Rosario Vidal Tocino, Raquel Hernandez, Gema Aguado, Juana María Cano, Alfonso Martín Carnicero, Monserrat Mangas, Paola Pimentel, Ana Fernández Montes, Ismael Macias Declara, Federico Longo, Avinash Ramchandani, Marta Martín Richard, Alicia Hurtado, Aitor Azkarate, Carolina Hernández Pérez, Raquel Serrano and Javier Gallego on behalf of the AGAMENON-SEOM study group

## Abstract

**Background:** Trastuzumab combined with cisplatin and fluoropyrimidines, either capecitabine or 5-fluorouracil (XP/FP), is the standard first-line treatment for advanced, HER2-positive, gastric cancer patients based on the ToGA trial. Despite the lack of phase III trials, many clinicians administer trastuzumab with alternative regimens. One meta-analysis suggests that substituting cisplatin for oxaliplatin might lead to greater efficacy and less toxicity.

**Methods:** 594 patients with HER2-positive gastroesophageal adenocarcinoma were recruited from the AGAMENON-SEOM registry. The objective was to evaluate the external validity of clinical trials with chemotherapy and trastuzumab.

**Results:** The regimens used in at least 5% of the patients were XP (27%), oxaliplatin and capecitabine (CAPOX) (26%), oxaliplatin and 5-fluorouracil (FOLFOX) (14%), FP (14%), triplet with anthracycline/docetaxel (7%), and carboplatin-FU (5%). Median exposure to trastuzumab was longer with FOLFOX (11.4 months, 95% CI, 9.1–21.0) versus ToGA regimens (7.5, 6.4–8.5),  $p < 0.001$ . Patients with HER2-IHC 3+ cancers had higher response rates than those with IHC 2+/FISH+, odds-ratio 1.97 (95% CI, 1.25–3.09). The results achieved with CAPOX–trastuzumab were comparable to those attained with ToGA regimens. FOLFOX–trastuzumab was superior to ToGA schemes in terms of overall survival (OS), with a greater magnitude of effect in IHC 2+/FISH+ tumors (HR 0.47, 0.24–0.92) compared with IHC 3+ (HR 0.69, 0.49–0.96), and in diffuse (HR 0.37, 0.20–0.69) versus intestinal-type tumors (HR 0.76, 0.54–1.06).

**Conclusion:** We have updated the external validity of clinical trials with trastuzumab in first-line treatment of gastric cancer. Our data confirm the comparable outcomes of ToGA regimens and CAPOX–trastuzumab in clinical practice and point toward a possible benefit of FOLFOX–trastuzumab, contingent on the subtypes typically less sensitive to trastuzumab, to be confirmed in clinical trials.

**Keywords:** chemotherapy, external validity, gastric cancer, HER2, oxaliplatin, trastuzumab

Received: 13 February 2021; revised manuscript accepted: 29 April 2021.

*Ther Adv Med Oncol*

2021, Vol. 13: 1–13

DOI: 10.1177/  
17588359211019672

© The Author(s), 2021.  
Article reuse guidelines:  
sagepub.com/journals-  
permissions

Correspondence to:

**Alberto Carmona-Bayonas**

Medical Oncology  
Department, Hospital  
Universitario Morales  
Meseguer, Calle Marqués  
de los Vélez, s/n, Murcia,  
30007, Spain  
**alberto.  
carmonabayonas@gmail.  
com**

**Paula Jimenez-Fonseca**

Medical Oncology  
Department, Hospital  
Universitario Central de  
Asturias, ISPA, Oviedo,  
Spain

**Alba Martinez-Torron**

Pharmacy Department,  
Hospital Universitario  
Marqués de Valdecilla,  
Santander, Spain

**Maria Alsina**

Medical Oncology  
Department, Complejo  
Hospitalario de Navarra,  
Pamplona Vall Hebron  
Institute of Oncology  
(VHIO), Barcelona, Spain

**Ana Custodio**

Medical Oncology  
Department, Hospital  
Universitario La  
Paz, CIBERONC  
CB16/12/00398, Madrid,  
Spain

**Olbia Serra**

Medical Oncology  
Department, Catalan  
Institute of Oncology,  
L'Hospitalet, Spain

**Diego Cacho Lavin**

Medical Oncology  
Department, Hospital  
Universitario Marqués  
de Valdecilla, IDIVAL,  
Santander, Spain

**María Luisa Limón**

Medical Oncology  
Department, Hospital  
Universitario Virgen del  
Rocío, Sevilla, Spain

**Tamara Sauri**

Medical Oncology  
Department, Hospital  
Clinic, IDIBAPS,  
Barcelona, Spain

**Flora López**

Medical Oncology  
Department, Hospital  
Universitario Doce de  
Octubre, Madrid, Spain

**Laura Visa**

Medical Oncology  
Department, Hospital  
Universitario El Mar,  
Barcelona, Spain

**Mónica Granja**

Medical Oncology  
Department, Hospital  
Universitario Clínico  
San Carlos, Madrid,  
Spain

**Nieves Martínez Lago**

Medical Oncology  
Department,  
Complejo Hospitalario  
Universitario de A  
Coruña, A Coruña, Spain

**Virginia Arrazubi**

Medical Oncology  
Department, Complejo  
Hospitalario de Navarra,  
IdiSNA (Navarra  
Institute for Health  
Research), Pamplona,  
Spain

**Rosario Vidal Tocino**

Medical Oncology  
Department, Complejo  
Asistencial Universitario  
de Salamanca-IBSAL,  
Salamanca, Spain

**Raquel Hernandez**

Medical Oncology  
Department, Hospital  
Universitario de  
Canarias, Tenerife,  
Spain

**Gema Aguado**

Medical Oncology  
Department, Hospital  
Universitario Gregorio  
Marañón, Madrid, Spain

**Juana María Cano**

Medical Oncology  
Department, Hospital  
General Universitario  
de Ciudad Real, Ciudad  
Real, Spain

**Alfonso Martín  
Carnicero**

Medical Oncology  
Department, Hospital  
San Pedro, Logroño,  
Spain

**Monserrat Mangas**

Medical Oncology  
Department, Hospital  
Galdakao-Usansolo,  
Usansolo, Spain

**Paola Pimentel**

Medical Oncology  
Department, Hospital  
General Universitario  
Santa Lucía, Cartagena,  
Spain

**Ana Fernández Montes**

Medical Oncology  
Department, Complejo  
Hospitalario de Orense,  
Orense, Spain

## Introduction

Advanced gastric cancer often exhibits chromosomal anomalies that can be acted upon through receptor tyrosine kinase (RTK)-directed therapies.<sup>1</sup> Overexpression of human epidermal growth factor receptor 2 (HER2) comprises one of the most recurring alterations (9–36%).<sup>2,3</sup> In 2010, the phase III randomized controlled trial (RCT) Trastuzumab for Gastric Cancer (ToGA) demonstrated the therapeutic effect of adding trastuzumab to six cycles of cisplatin and fluoropyrimidine (capecitabine, fluorouracil) in patients with cancer of the stomach or of the gastroesophageal junction with HER2 amplification or overexpression (HER2+).<sup>4</sup> Patients who received trastuzumab reached longer overall survival (OS), 13.8 *versus* 11.0 months, [hazard ratio (HR) 0.74, 95% confidence interval (CI), 0.60–0.91] and impairment of their quality of life delayed.<sup>5</sup> In the subgroup with immunohistochemistry (IHC) 2+ scoring and fluorescence *in situ* hybridization (FISH)-positive tumors or IHC 3+ tumors, OS was 16.0 months.

The European Medicines Agency approval of this combination in 2010, notwithstanding many questions remaining unanswered, including optimal chemotherapy duration or the most suitable backbone for it. Thus, several subsequent trials have suggested that bi-weekly oxaliplatin-based regimens are better tolerated.<sup>6,7</sup> Instead of administering cisplatin- and fluoropyrimidine-based treatments (ToGA regimens), many clinicians tend to incorporate trastuzumab to the standard first-line regimen in their department and tailored to the patient's specific characteristics (e.g. CAPOX, FOLFOX, or triplets). Similarly, there is no consensus in clinical guidelines with respect to chemotherapy regimen, duration, or the best maintenance strategy. While the National Comprehensive Cancer Network (NCCN) endorses the addition of trastuzumab to any chemotherapy regimen, ESMO guidelines recommend using cisplatin and fluoropyrimidine in HER2+ cancers.<sup>8,9</sup>

A meta-analysis with 557 patients from 15 prospective or retrospective studies indirectly compared OS of regimens alternative to ToGA.<sup>10</sup> Ter Veer et al. concluded that oxaliplatin-based dual-agent schemes (FOLFOX or CAPOX) associated with trastuzumab were more efficacious than ToGA regimens (median OS 20.7 *versus* 16 months, HR 0.75, 95% CI, 0.59–0.99), which they attributed to its more favorable toxicity

profile, although it was unclear whether this depended on patient- or cancer-related factors or on treatment duration.<sup>10</sup> Trastuzumab associated with anthracycline or docetaxel-based triplet increased toxicity without any gain in efficacy. Nevertheless, the data in favor of regimens with oxaliplatin derive from three small phase II trials that, all told, amount to 140 individuals, and yield superior survival endpoints to those generally seen in larger RCTs (median OS rates around 20 months).<sup>11–13</sup> This leaves the door open to the existence of selection factors that could affect the phase II trial outcomes.<sup>14</sup> Therefore, the indirect comparison between ToGA and the pooled estimates of these small, heterogeneous studies (e.g. different eligibility criteria) implies that this kind of causal inference runs the risk of bias. Among the limitations, this method impedes adjusting for covariates, controlling for selection or recruitment bias; similarly, the effect on the overall response rate (ORR) or progression-free survival (PFS) is unknown.<sup>15</sup> There are currently no RCTs that compare ToGA *versus* trastuzumab with oxaliplatin-based regimens.

With this premise, this study of the AGAMENON-SEOM registry seeks to evaluate the external validity of clinical trials with trastuzumab and chemotherapy in HER2+ gastroesophageal adenocarcinoma, analyze the results of the different regimens, and probe into associated predictive factors.

## Materials and method

### *Patients and study design*

The study population is from the AGAMENON-SEOM gastroesophageal cancer registry, in which 34 Spanish centers currently participate.<sup>3,16–25</sup> Eligibility criteria for this analysis include age >18 years; histologically confirmed, inoperable, locally advanced, recurrent, or metastatic adenocarcinoma of the distal esophagus, stomach, or gastroesophageal junction; HER2+ status, and having received at least one cycle of polychemotherapy (two or more cytotoxic drugs) associated with trastuzumab. HER2 status was determined locally at the participating centers by means of IHC scoring and/or FISH as part of regular clinical practice. HER2+ overexpression was defined as a +3 IHC score or +2 accompanied by FISH (FISH+). Those participants who had completed perioperative or adjuvant treatment in the preceding 6 months and those HER2+ cancers not

treated with trastuzumab in first-line treatment were excluded.

The database is managed *via* an online platform (<http://www.agamenonstudy.com/>) and is equipped with multiple tools and filters to guarantee data reliability and consistency, as well as minimizing missing values; regular telephone and online monitoring was also conducted.

The study was performed in accordance with Good Clinical Practice guidelines and the Declaration of Helsinki. It was approved by Research Ethics Committees of all the Autonomous Communities and participating hospitals, and was classified as a prospective, postmarketing surveillance study by the Spanish Agency of Medicines and Medical Devices (AEMPS), and was not otherwise involved in it. The list of the Research Ethics Committees involved in this project is provided in Supplemental Table S1. All participants still alive at the time of data collection provided written, signed, informed consent.

### Treatment

All the subjects received trastuzumab and polychemotherapy in first-line treatment. The chemotherapeutic regimen, dose intensity, and number of cycles were chosen at the investigator's discretion. A loading dose of trastuzumab (T) of 8 mg/kg of body weight and maintenance dose of 6 mg/kg was administered in the tri-weekly chemotherapy regimens. In bi-weekly schemes, trastuzumab was administered with both weekly (loading dose of 4 mg/kg and maintenance dose of 2 mg/kg), and bi-weekly doses (loading dose of 6 mg/kg and maintenance dose of 4 mg/kg). Trastuzumab was administered until progression or unacceptable toxicity.

### Variables and objectives

OS was defined as the time between initiation of first-line treatment until death from any cause, censoring subjects who were event-free at their last follow-up. PFS was defined as the interval of time between commencement of first-line treatment until progression as per RECIST 1.1 criteria, demise, or last follow-up. Other variables were used for descriptive or auxiliary purposes. Relative dose intensity was expressed in percentages and defined as the dose intensity (the amount of drug per unit of time, expressed as mg/m<sup>2</sup>

weekly) administered with respect to the planned amount for each schedule. Multivariable models included nine variables, selected on the basis of theoretical criteria or experience in earlier studies.<sup>20</sup> These covariates were performance status (ECOG-PS), histological grade, Lauren histological classification subtype, bone metastases, liver tumor burden, number of metastatic sites, neutrophil/lymphocyte ratio, chemotherapy regimen, and HER2 status (IHC 3+ *versus* IHC 2/FISH+). Toxicity was classified according to Common Terminology Criteria for AEs (CTCAE) v4.0. Another descriptive variable was the reason stated by the clinician for choosing the chemotherapy regimen as one of the following alternatives (inability to swallow, clinical trial, induction therapy prior to surgery for metastases, tumor regression in a symptomatic patient, quality of life, comorbidities, clinician's experience, or department protocol). Clinician's experience refers to the oncologist choosing the chemotherapy regimen without taking into account considerations regarding the patient, the tumor, or the hospital protocol, but instead, their own experience.

The primary objective was to perform an external validation of the results of the ToGA RCT and other trials focused on HER2+ patients.<sup>10</sup> Secondary objectives were to assess OS, PFS, ORR, toxicity, subgroup effects, and to ascertain the reason for administering each regimen.

### Statistics

Categorical and continuous variables were compared using Pearson's Chi-squared tests and two-sample Wilcoxon tests, respectively. The Cochran–Mantel–Haenszel test was used to examine the association between categorical variables controlling for stratification factors. The assumption that the odds ratios (OR) are homogeneous across several strata was scrutinized by means of the Breslow–Day test. Time-to-event was analyzed using multivariable Cox proportional hazards (PH) models, comparing average treatment effect of ToGA regimens with others, as well as evaluating the effect conditioned on HER2-IHC (tests of interaction). The non-linear effect of the neutrophil-to-lymphocyte ratio (continuous variable) was assessed by means of a restricted cubic spline with three knots (a kind of smooth function that makes it possible to readily capture non-linear relations). All analyses were performed with the R v4.03 software package, with the rms & ggplot2 libraries.<sup>26,27</sup>

**Ismael Macias Declara**  
Medical Oncology  
Department,  
Hospital  
Universitario Parc  
Tauli, Sabadell,  
Spain

**Federico Longo**  
Medical Oncology  
Department,  
Hospital  
Universitario  
Ramón y Cajal,  
Madrid, Spain

**Avinash Ramchandani**  
Medical Oncology  
Department,  
Hospital  
Universitario  
Insular de Gran  
Canaria, Las  
Palmas de Gran  
Canaria, Spain

**Marta Martín Richard**  
Medical Oncology  
Department,  
Hospital  
Universitario Santa  
Creu i Sant Pau,  
Barcelona, Spain

**Alicia Hurtado**  
Medical Oncology  
Department,  
Hospital  
Universitario  
Fundación Alcorcón,  
Madrid, Spain

**Aitor Azkarate**  
Medical Oncology  
Department,  
Hospital  
Universitario Son  
Espases, Mallorca,  
Spain

**Carolina Hernández Pérez**  
Medical Oncology  
Department,  
Hospital  
Universitario  
Nuestra Señora  
de the Candelaria,  
Tenerife, Spain

**Raquel Serrano**  
Medical Oncology  
Department,  
Hospital  
Universitario Reina  
Sofía, Córdoba,  
Spain

**Javier Gallego**  
Medical Oncology  
Department,  
Hospital General  
Universitario of  
Elche, Elche, Spain

## Results

### Patients

The AGAMENON-SEOM registry contains 3018 individuals treated between 2008 and 2020. Within this cohort, 22.3% ( $n=675$ ) had HER2+ cancers and 19.6% ( $n=594$ ) had received first-line trastuzumab-based chemotherapy. Of the latter, 71% ( $n=422$ ) had an IHC 3+ tumor, whereas 29% ( $n=172$ ) had IHC 2+/FISH+. The predictive model of HER2 positivity is shown in Supplemental Table S2. HER2 overexpression was associated with Lauren intestinal or mixed cancers and tumors located in the distal esophagus or gastroesophageal junction.

Table 1 displays patients' baseline characteristics. Most were intestinal cancers, although the presence of a diffuse component in one in four and of signet ring cells in 13% is striking. The primary tumor was located in the stomach in 65.3% of the cases ( $n=388$ ); in the gastroesophageal junction in 21.2% ( $n=126$ ), and in the esophagus in 13.4% ( $n=80$ ). Of the subjects with progression at first-line treatment ( $n=535$ ), 63% ( $n=337$ ) received a second line, and 18% ( $n=96$ ) received a third line.

### Selection of chemotherapy regimen

Different chemotherapy backbones were associated with trastuzumab (Table 1 and Supplemental Table S3), although five of them were administered to 87% in the series: capecitabine and cisplatin (XP) in 27% ( $n=163$ ), capecitabine and oxaliplatin (CAPOX) in 26%, fluorouracil (FU) and oxaliplatin (FOLFOX) in 14% ( $n=86$ ), FU and cisplatin (FP) in 14% ( $n=81$ ), and carboplatin and FU (CarFU) in 5% ( $n=30$ ). Alternative ToGA regimens were prescribed in 59% (350/594). The main reasons for choosing a specific scheme was compliance with local protocol and the clinician's experience (Figure 1); other, less frequent motivations included conversion chemotherapy in unresectable disease, preservation of quality of life, inability to swallow, etc. (Supplemental Figure S1). The characteristics of the subjects treated with the different chemotherapy regimens were comparable except for the older age in the CarFU-T-treated group (median 72 *versus* 65 years), worse functional status in the FOLFOX-T group (ECOG-PS 2, 25.5 *versus* 11.8%), and the higher percentage of diffuse subtypes treated with FP-T (34.6 *versus* 17.6%) (Supplemental Table S4).

### Trastuzumab-based chemotherapy regimens: dosage and administration

Median follow-up in live patients was 62.8 months (95% CI, 42.8–85.1). At the time of analysis (November 2020), 82% had discontinued trastuzumab, with 6.8 months median trastuzumab treatment duration (95% CI, 6.2–7.5). The chemotherapy dosage administered, duration, and criteria for suspension varied depending on the scheme. Supplemental Table S5 illustrates the dosages administered. Maintenance therapies with fluoropyrimidine and trastuzumab were used more frequently following oxaliplatin-based regimens, especially FOLFOX *versus* ToGA. Thus, median exposure to trastuzumab was more prolonged with FOLFOX (10.6 months, 95% CI, 8.4–20.3) *versus* CAPOX (7.1 months, 6.1–8.5), FP (7.0 months, 5.5–7.8), or XP (6.8 months, 5.1–7.9)  $p < 0.001$ . Furthermore, participants treated with FOLFOX-T received a median of 12 cycles of FU, with tumor progression being the most common cause for withdrawal. In contrast, a median of six cycles of ToGA regimens were administered, with the leading reason for discontinuation being “planned treatment completed” (Supplemental Figure S2).

### Safety

Table 2 shows the most common adverse events broken down by treatment type. Most of the toxicities were mild, although 24.2% ( $n=136$ ) of the patients were hospitalized for adverse events. Of the subjects treated with XP, 30% were admitted due to toxicity *versus* around 20% with the remaining regimens.

Overall, ToGA schemes exhibited the same hematological toxicity profile as in the original study, except for more anemia of any grade (XP-T 71%, FP-T 65%). Non-hematological toxicity was likewise, comparable, although it depended on the specific regimen. XP-T correlated with more grade 3–4 diarrhea compared with FP-T (XP-T 11% *versus* FP-T 2%), but less stomatitis (XP-T 2% *versus* FP-T 11%) (Table 2).

Head-to-head comparisons of cisplatin- and oxaliplatin-based regimens revealed that the former associated less grade 3–4 diarrhea (XP-T 4.9%, FP-T 2.5% *versus* CAPOX-T 10.8%, FOLFOX-T 9.3%) and more grade 3–4 thrombosis (XP-T 8.6%, FP-T 8.6% *versus* CAPOX-T 2.5%, FOLFOX-T 3.5%). Capecitabine-containing schemes had less grade 3–4 stomatitis (XP-T 3%,

**Table 1.** Baseline characteristics.

Variables	N (%) 595 (100)
Age, median (range)	65 [22–87]
Sex, male	467 [78.6%]
HER2	
3+	422 [71.0]
2+/FISH+	172 [29.0]
ECOG-PS	
0	146 [24.5]
1	362 [60.9]
2	86 [14.4]
Charlson index	
Cardiovascular chronic disease	61 [10.2]
Number of chronic comorbidities >2	185 [31.1]
Tumor stage, locally advanced unresectable	23 [3.8]
Tumor site	
Stomach	388 [65.3]
Gastroesophageal junction	126 [21.2]
Esophagus	80 [13.4]
Lauren subtype	
Intestinal	361 [60.8]
Diffuse or mixed	122 [20.5]
Indeterminate	111 [18.7]
Signet ring cells	77 [13.0]
Metastatic sites	
Ascites	86 [14.5]
Peritoneal	175 [29.5]
Bone	55 [9.3]
Liver	329 [55.4]
Lung	143 [24.1]
Lymph nodes	307 [51.5]
Number of metastatic sites, >2	185 [31.1]
CEA, median (range)	10 [0–36,000]
Albumin	
Normal (>35g/dl)	397 [66.8]

*(continued)***Table 1.** (continued)

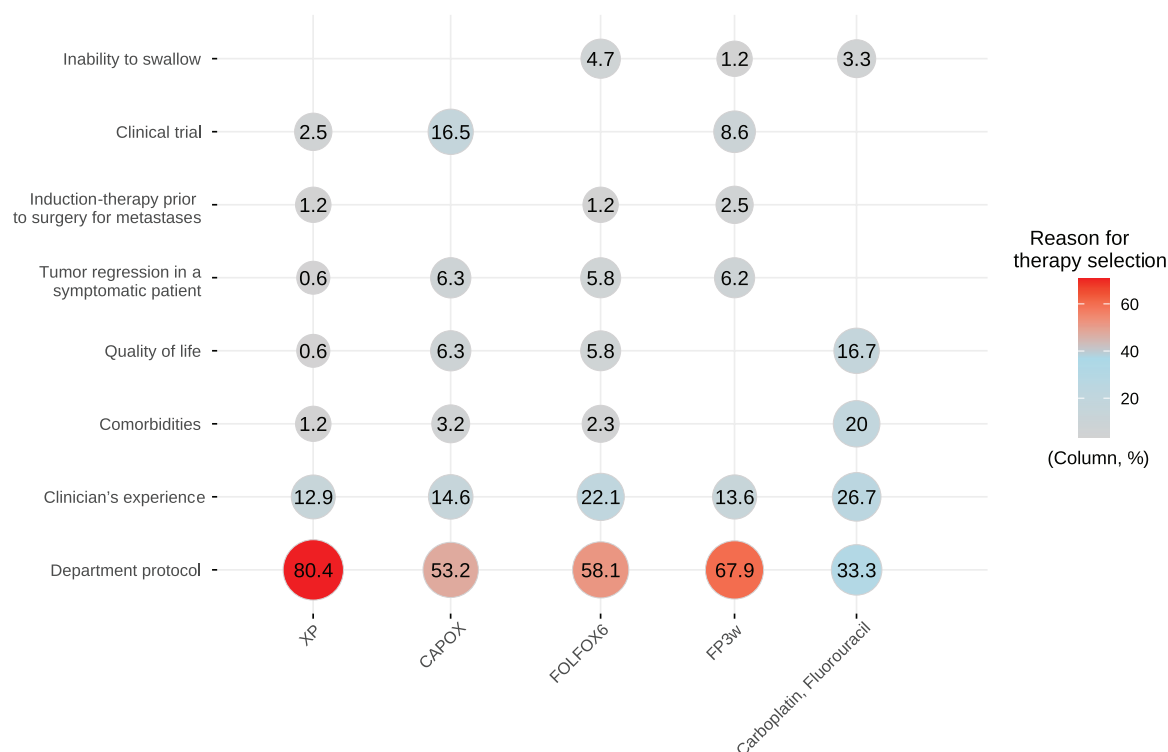
Variables	N (%) 595 (100)
30–35	93 [15.7]
<30	49 [8.2]
No available	55 [9.3]
Surgery of primary cancer	141 [23.7]
Chemotherapy regimen	
XP	163 [27.4]
CAPOX	158 [26.5]
FOLFOX	86 [14.4]
FP	81 [13.6]
Carboplatin–fluorouracil	30 [5.0]
Anthracycline-based triplet	27 [4.5]
Docetaxel-based regimen	13 [2.1]
Modified CAPOX	9 [1.5]
Other	27 [4.5]

CAPOX, capecitabine–oxaliplatin; ECOG-PS, Eastern Cooperative Oncology Group Performance Status; FISH, fluorescence *in situ* hybridization; FOLFOX, fluorouracil–oxaliplatin; FP, fluorouracil–cisplatin; XP, capecitabine–cisplatin.

CAPOX-T 2%, versus FP-T 11% versus FOLFOX-T 9%) and more palmar-plantar erythrodysesthesia (CAPOX-T 3%, XP-T 2%, versus FP-T or FOLFOX-T 0%) relative to those based on FU. Toxicity-related mortality was uncommon ( $n=5$ , 0.8%) and only occurred in capecitabine-containing regimens (CAPOX-T 1.3%, XP-T 1.8%) (Supplemental Figure S3).

### Efficacy

At approximately 3 months of treatment initiation, 437/594 (74%) had measurable and response-evaluable disease. In these cases, the investigator-rated RECIST 1.1 ORR at 3 months revealed: complete response, 1.1% ( $n=5$ ); partial response, 55.8% ( $n=244$ ); stable disease, 23.1% ( $n=101$ ); and tumor progression, 19.9% ( $n=87$ ). Individuals with HER2-IHC 3+ cancers had a higher ORR, with common OR 1.97 (95% CI, 1.25–3.09) (Mantel–Haenszel  $\chi^2=8.060$ ,  $df=1$ ,  $p=0.004$ ). This association is homogenous regardless of the scheme used (Breslow–Day  $\chi^2=1.062$ ,  $df=4$ ,  $p=0.900$ ), with no evidence



**Figure 1.** Reasons for therapy selection.

Column percentiles are represented [what led clinicians to select specific regimens in each scenario?]. Clinician's experience refers to the oncologist choosing the chemotherapy regimen without taking into account considerations regarding the patient, the tumor, or the hospital protocol, but instead, their own experience.

CAPOX, capecitabine-oxaliplatin; CarboFU, carboplatin-fluorouracil; FOLFOX, fluorouracil-oxaliplatin; FP, fluorouracil-cisplatin; XP, capecitabine-cisplatin.

that the ORR differs based on the regimen ( $\chi^2 = 3.977$ ,  $df = 4$ ,  $p = 0.409$ ). Figure 2 shows a slope plot with ORR stratified according to HER2 and scheme.

At the time of analysis, 500 fatal events had been recorded, with median OS of 14.0 months (95% CI, 12.9–15), and 535 progression events, with median PFS of 7.6 (7.0–8.2) months. Figure 3 illustrates the Kaplan–Meier curves stratified by chemotherapy scheme.

In this clinical practice study, FOLFOX-T reached a median PFS of 9.6 months (7.7–12.9) and OS of 16.5 months (12.3–24.5), comparable to the IHC 3+ or IHC 2+/FISH+ subgroup in the reference RCT. Subjects treated with CarFU-T achieved the lowest medians with PFS of 5.5 months (4.3–7.1) and OS of 8.9 months (5.7–15.7). ToGA regimens displayed the lowest median OS compared with the original RCT: 13.7 months (95% CI, 10.6–16.0) for FP-T and 13.9 months (11.4–16.0) for XP-T. Median OS was comparable in our study for individuals

treated with CAPOX-T or ToGA regimens (Figures 3 and 4). PFS data were likewise consistent. The numbers are small, yet a signal in favor of additional benefit with triplets cannot be ruled out (Supplemental Table S6).

Using the multivariable Cox PH model, HER2-IHC 2+/FISH+ cancers correlated with worse PFS (HR 1.22, 95% CI, 1.00–1.49) and OS (HR 1.20, 0.98–1.47). As for average treatment effects, the Cox model generates the hypothesis that FOLFOX-T might be superior to ToGA regimens with HR for PFS and OS of 0.60 (95% CI, 0.45–0.79) ( $p < 0.0003$ ) and 0.63 (0.47–0.85) ( $p = 0.002$ ), respectively. In a sensitivity analysis, the addition of the variable “reason for treatment choice” (e.g. clinician's experience, department protocol, etc.) did not modify these estimations (see Supplemental Figure S4). The inclusion of the secular year as a confounding factor did not substantially modify these estimations (datum not shown).

No differences were detected between CAPOX-T and ToGA schemes with HR for PFS and demise

**Table 2.** Treatment-related toxicity in the most frequent regimens.

Toxicity	XP (%)		CAPOX (%)		FOLFOX (%)		FP (%)	
	Total	Grade 3–4	Total	Grade 3–4	Total	Grade 3–4	Total	Grade 3–4
Anemia	71	9	60	9	81	8	65	7
Neutropenia	57	11	37	22	63	33	60	25
Febrile neutropenia	8		3		8		2	
Thrombocytopenia	18	4	31	3	44	5	15	1
Emesis	39	1	32	7	48	2	36	1
Diarrhea	42	11	59	5	46	9	48	2
Stomatitis	32	2	31	3	34	9	57	11
Fatigue	78	5	63	7	78	6	75	4
Heart failure	5	1	2	1	6	1	2	1
Hand-foot syndrome	44	3	43	2	19	0	10	0
Neuropathy	31	4	74	1	74	9	17	5
Alopecia	26		2		8		27	
Increased aspartate aminotransferase	7	1	17	1	15	0	9	1
Hyperbilirubinemia	4	1	8	1	6	0	5	0
Nephrotoxicity	9	1	8	1	9	0	9	0
Venous thromboembolic disease*	13		4		11		17	
Toxicity-related hospital admission	30		21		20		20	
Death due to toxicity	2		1		0		0	

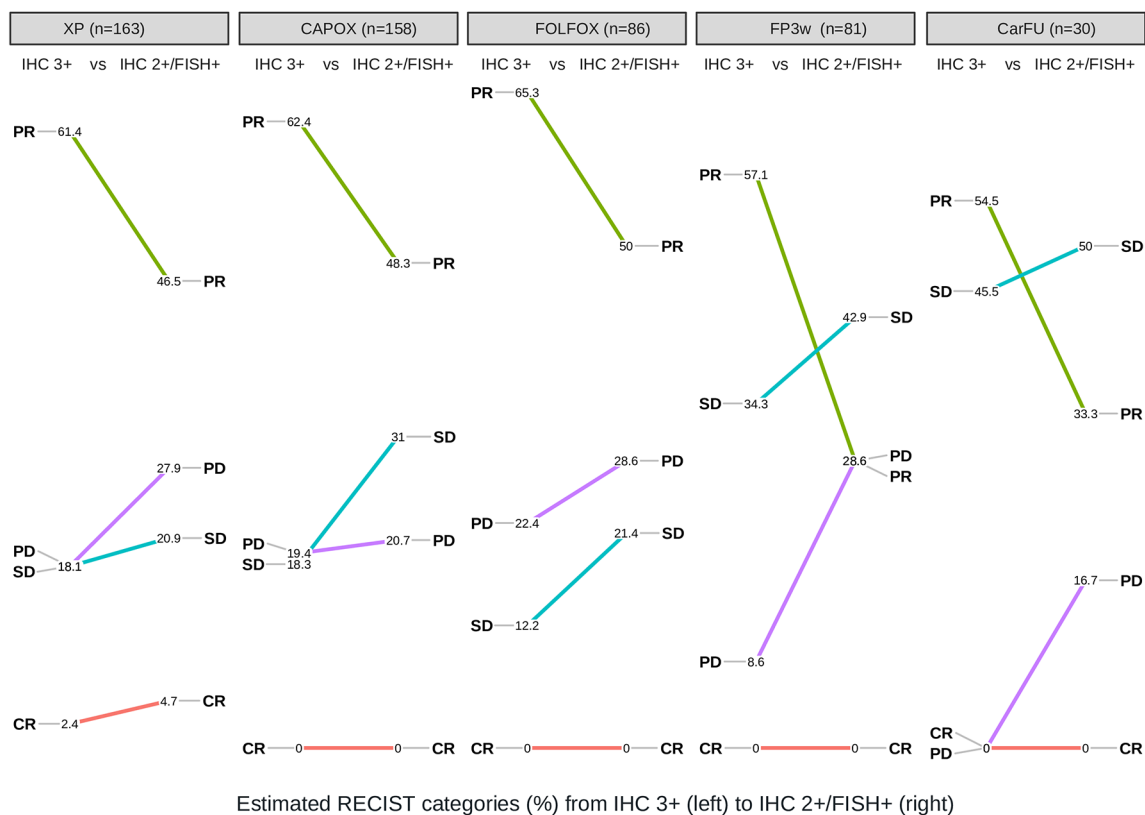
\*CTCAE v4.0 grades 2–4 are included.  
CAPOX, capecitabine–oxaliplatin; FOLFOX, fluorouracil–oxaliplatin; FP, fluorouracil–cisplatin; XP, capecitabine–cisplatin.

of 0.88 (95% CI, 0.71–1.10) and 0.94 (0.75–1.18), respectively (Figure 4 and Supplemental Figure S5). Other Cox model estimates for OS are also displayed in Supplemental Table S7. The non-linear effect of the neutrophil-to-lymphocyte ratio on OS is illustrated in Supplemental Figure S6. Concerning conditional effects, FOLFOX-T displayed a greater magnitude of effect *versus* ToGA regimens in cancer patients with diffuse (HR 0.37, 95% CI, 0.20–0.69) *versus* intestinal (HR 0.76, 0.54–1.06) [p(int)=0.047] subtypes. The same tendency was seen with respect to HER2 overexpression intensity, with HR for deaths of 0.47 (95% CI, 0.24–0.92) in IHC2+/*FISH*+ *versus* 0.69 (0.49–0.96) in ICH3+,

although the CI were broad [p(int)=0.317]. No subgroup effects were noted for hepatic tumor burden, bone metastases, histological grade, or for CAPOX-T *versus* ToGA regimens.

### Discussion

In keeping with the ToGA study, trastuzumab plus cisplatin and capecitabine/fluorouracil is standard first-line treatment for HER2+ advanced gastric or gastroesophageal junction adenocarcinoma. Nevertheless, clinicians assiduously use alternative trastuzumab-associated regimens.<sup>8</sup> Ter Veer *et al.*<sup>28</sup> compared ToGA regimens against alternative chemotherapy schemes administered in phase



**Figure 2.** Slope plots with RECIST categories for HER2 ICH 3+ versus ICH 2+/FISH+.

Column percentiles are represented.

CAPOX, capecitabine-oxaliplatin; CarboFU, carboplatin-fluorouracil; CR, complete response; FISH, fluorescence *in situ* hybridization; FOLFOX, fluorouracil-oxaliplatin; FP, fluorouracil-cisplatin; IHC, immunohistochemistry; PD, progression disease; PR, partial response; SD, stable disease; XP, capecitabine-cisplatin.

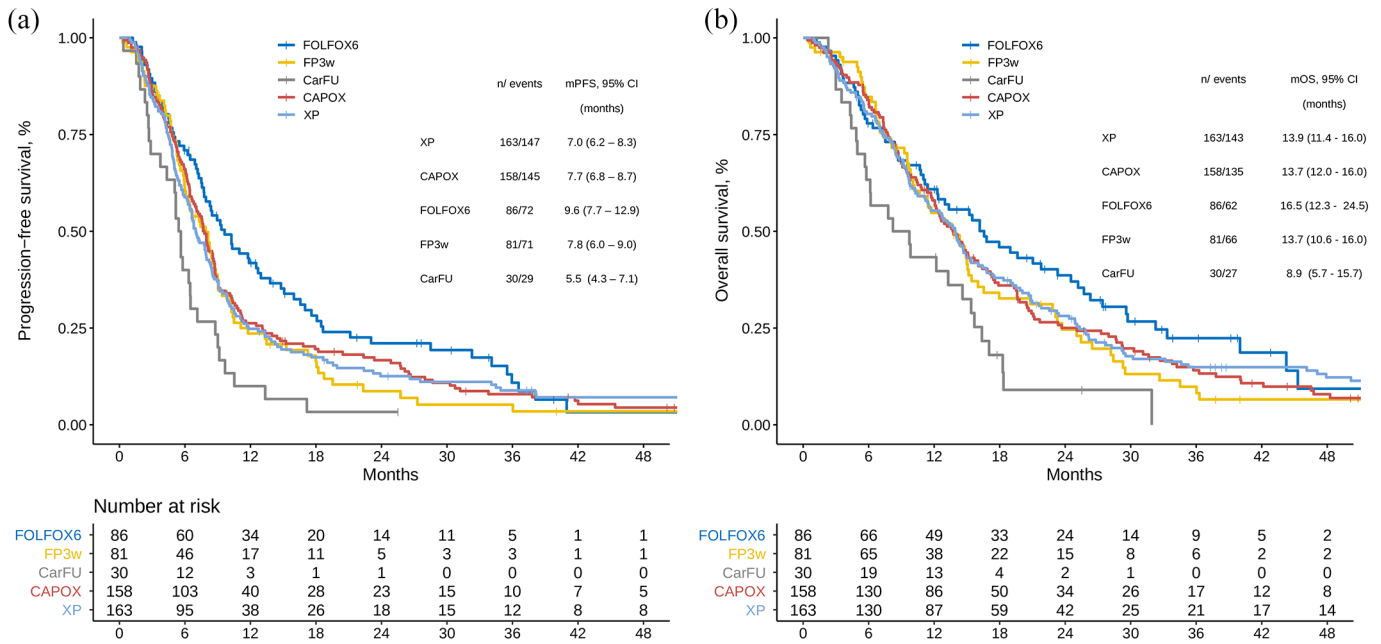
II and observational studies.<sup>10</sup> Despite the authors' conclusion that oxaliplatin-based dual-agent schemes were preferable to ToGA regimens, the methodology was susceptible to confounding bias with consistency among the studies being contravened and in the presence of problems of external validity.<sup>29</sup>

With this study, we have evaluated the efficacy and safety of trastuzumab-based chemotherapy regimens utilized in the real-world AGAMENON-SEOM registry, and arrived at four main conclusions. First, the ToGA regimens used in the AGAMENON-SEOM registry achieved worse survival outcomes compared with the IHC 3+ or IHC 2+/FISH+ subgroup of the original RCT. The inclusion of non-Asian patients or the greater frailty of the individuals of this sample (ECOG-PS 2 in 14% or >2 comorbidities in 31%) might account for this discrepancy. Moreover, each specific scheme (XP-T versus FP-T) has a slightly

different tolerance profile; particularly of note is the 30% of hospitalizations due to toxicity associated with XP-T in our study.

Second, in this series, CAPOX-T behaves similarly to the ToGA regimens, despite its different safety profile (e.g. less thrombosis and stomatitis). As for survival endpoints, our results with CAPOX-T are on a par with those reported by Rivera *et al.*<sup>30</sup> in a Western population. Nevertheless, they are more discreet than those found in both the IHC 3+ or IHC 2+/FISH+ subgroup from the ToGA RCT, as well as in the two Asian, phase II studies that reported median PFS and OS of approximately 9 and 20 months, respectively<sup>11,12</sup> and comprise the basis of the meta-analysis by ter Veer.<sup>10</sup> Consequently, these data similarly fail to replicate the Western population of the AGAMENON-SEOM registry, or point toward a selection bias in favor of patients with better prognoses in both phase II clinical trials.<sup>11,12</sup>



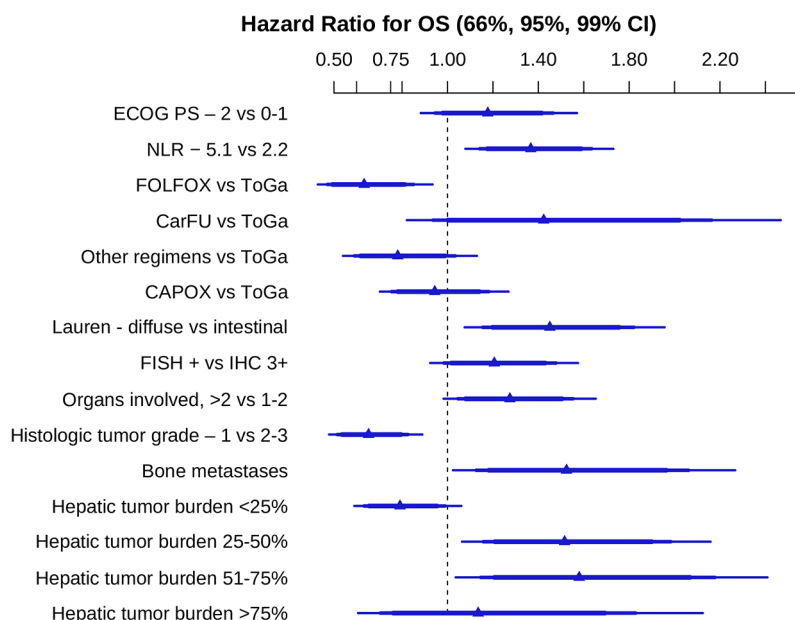


**Figure 3.** Survival functions stratified by type of treatment. (a) Progression-free survival. (b) Overall survival. CAPOX, capecitabine-oxaliplatin; CarFU, carboplatin-fluorouracil; CI, confidence interval; FOLFOX, fluorouracil-oxaliplatin; FP, fluorouracil-cisplatin; n, number; OS, overall survival; PFS, progression-free survival; XP, capecitabine-cisplatin.

Third, our data support the hypothesis that, in daily practice, the average treatment effect of FOLFOX-T might be superior to ToGA regimens. This hypothesis should be tested in a RCT, although it is in line with the result reported by Soulaireu in a phase II trial with a Western population and incorporated into the meta-analysis by ter Veer.<sup>10,13</sup> Trastuzumab dosing in bi-weekly schedules is different, albeit there are data that suggest that these dosages are capable of reaching the minimum concentrations associated with inhibition of tumor growth.<sup>31</sup> One possible cause for this advantage in the AGAMENON registry is that by using ToGA or CAPOX-T regimens, there was a tendency to assume that the treatment had a pre-defined duration as considered for the CF or XP regimens, while with FOLFOX-T, FU may have been managed differently, which facilitated maintenance together with trastuzumab. Optimal treatment duration has not been well defined in advanced gastric cancer.<sup>21,32</sup> In the ToGA RCT, individuals without progression after six cycles discontinued chemotherapy and maintained trastuzumab until progression.<sup>4</sup> However, this strategy may not be the best for some patient profiles (e.g. those having a high tumor burden, without toxicity).<sup>21</sup>

Beyond the average treatment effects, our study suggests that subgroup effects could be

particularly relevant in choosing the optimum backbone of chemotherapy based on ORR and on the trend in survival endpoints. Thus, should this hypothesis that FOLFOX-T might be more efficacious than ToGA regimens be confirmed, it would be especially pertinent in populations who benefit less from this strategy, such as diffuse tumors and those that are HER2+ on IHC2+/FISH+.<sup>33</sup> The rest of the literature is compatible with this hypothesis. In one pre-planned sub-analysis of the ToGA RCT, cisplatin, fluoropyrimidine, and trastuzumab were seen to have a greater magnitude of treatment effect in IHC 3+/FISH+ (HR 0.58, 95% CI, 0.41–0.81) versus IHC 2+/FISH+ (HR 0.75, 0.51–1.11) tumors.<sup>4</sup> The analysis of biomarkers from the GATSBY RCT of trastuzumab emtansine in second line yielded similar outcomes.<sup>34</sup> In parallel, there are data in the literature that speak to a slight superiority of oxaliplatin dual-agent schemes versus cisplatin in tumors not selected by HER2.<sup>6,7</sup> For example, one meta-analysis detected a discreet benefit for oxaliplatin (HR for death 0.88, 95% CI, 0.78–0.99), which, in addition, was tolerated better in bi-weekly regimens.<sup>6</sup> In light of this evidence, one possible explanation for our results is that the smaller targeted effect of ToGA regimens in tumors *a priori* less sensitive to trastuzumab is offset by the greater cytotoxic spectrum of



**Figure 4.** Cox proportional hazards model for overall survival.

For the categorical variable “hepatic tumor burden” the contrast is between each level and the rest. The neutrophil-to-lymphocyte ratio variable has been modeled by means of a restricted cubic splines, illustrating here the prognostic effect of the increase from 2.2 to 5.1 (25% and 75% percentiles, respectively). CAPOX, capecitabine–oxaliplatin; CarFU, carboplatin–fluorouracil; CI, confidence interval; ECOG-PS, Eastern Cooperative Oncology Group performance status; FISH, fluorescence *in situ* hybridization; FOLFOX, fluorouracil–oxaliplatin; IHC, immunohistochemistry; NLR, neutrophil/lymphocyte ratio; OS, overall survival; ToGa, ToGa regimens (XP, capecitabine–cisplatin and FP, fluorouracil–cisplatin).

oxaliplatin in these groups.<sup>4</sup> On the other hand, in cancers that are more sensitive to trastuzumab (intestinal, IHC 3+), trastuzumab’s activity might dilute the lesser efficacy of chemotherapy not based on oxaliplatin. This is also in line with various studies that report that trastuzumab is less effective on tumors with heterogenous HER2 expression, diffuse histopathology, or other molecular alterations that provide resistance.<sup>35–37</sup>

These considerations may be relevant when choosing treatment schemes in future trials with immunotherapy, since, although the evidence is still limited, preliminary data indicate that oxaliplatin would also be more immunogenic than other platins, given its greater capacity to induce immunogenic cell death.<sup>38</sup> Finally, CarFU-T combinations were the least active, even after controlling for confounding factors. Data with triple-agent regimens are still scarce.

The readers must be mindful that our study has several limitations, the most conspicuous one being the observational design, use of modified or

non-conventional regimens, such as CarFU-T, and toxicity being recorded in the course of regular care. Despite attempting to control for the most important confounding factors, residual confounding bias cannot be entirely ruled out. Still, there are no data in this study that point toward a selection bias of patients having a better prognosis among those treated with FOLFOX-T, while this regimen tended to be used more in subjects having a worse ECOG-PS. Another pertinent aspect is that HER2-testing was not centrally analyzed, but rather as part of routine practice in each center. The reader should also be aware that the safety profile was assessed solely for descriptive purposes, without any attempt to match or adjust for covariates. Finally, despite the fact that the study covers individuals treated over the course of 12 years, the sample does not allow for temporal trends to be analyzed. These trends are generally needed to interpret results in the conditions of ever-changing clinical practice.

In conclusion, our data emphasize the diversity of criteria and rationale for the use of trastuzumab-based chemotherapy regimens in everyday clinical practice. This analysis does not support the conclusion of Ter Veer’s meta-analysis that oxaliplatin schemes are more efficacious and safe in general than cisplatin-based regimens, given that in this series of real-world data, the benefit appears to be limited exclusively to FOLFOX-T. Our study generates the hypothesis that this scheme may be more efficacious and convenient than ToGA regimens, whose efficacy is, in turn, comparable to CAPOX-T. If confirmed in RCTs, the incremental benefit of FOLFOX-T could be associated with a pattern of maintaining fluoropyrimidine, and is more relevant in tumor subtypes *a priori* less sensitive to anti-HER2 therapy. Therefore, these results endorse the future investigation of FOLFOX-T in advanced HER2+ gastroesophageal cancer.

#### Acknowledgements

The authors would like to thank the investigators of the AGAMENON study, the Spanish Society of Medical Oncology (SEOM), Priscilla Chase Duran for editing the manuscript and Natalia Cateriano, Gustavo Reporte, Miguel Vaquero, IRICOM S.A. for supporting the registry website.

#### Authors’ contributions

A.C.B., P.J.F., J.G. and A.M.T. developed the project, analyzed the data and drafted the

manuscript. The other authors recruited patients and provided clinical information, comments, and improvements to the manuscript. All authors participated in the interpretation and discussion of data, and the critical review of the manuscript.

### Conflict of interest statement

The authors declare that there is no conflict of interest.

### Funding

The authors received no financial support for the research, authorship, and/or publication of this article.

### Ethical approval and consent to participate

All procedures followed were in accordance with the ethical standards of the committee responsible for human experimentation (institutional and national) and with the Helsinki Declaration of 1964 and later versions. Informed consent was obtained from all patients before being included in the study. This work is original and has not been previously presented elsewhere.

### Ethical statement

This study was performed in accordance with the ethical standards of the Declaration of Helsinki and its subsequent amendments. This observational, non-interventional trial was approved by the Research Ethics Committee of all centers.


### Informed consent statement

Signed informed consent was obtained from all alive patients.

### Consent for publication

Informed consent and approval by the competent national authorities includes permission for publication and dissemination of the data.

### ORCID iD

Nieves Martínez Lago  <https://orcid.org/0000-0002-0408-6871>

### Data availability

All the data generated or analyzed in this study are included in the manuscript or the supplementary information.

The database is available through a centralized web platform: <http://www.agamenonstudy.com/>. The details of analyses used in the current study are available from the first author or corresponding author upon request.

### Code availability

The R Code is available upon request to the authors.

### Supplemental material

Supplemental material for this article is available online.

### References

1. Cancer Genome Atlas Research Network. Comprehensive molecular characterization of gastric adenocarcinoma. *Nature* 2014; 513: 202–209.
2. Deng N, Goh LK, Wang H, *et al.* A comprehensive survey of genomic alterations in gastric cancer reveals systematic patterns of molecular exclusivity and co-occurrence among distinct therapeutic targets. *Gut* 2012; 61: 673–684.
3. Jiménez-Fonseca P, Carmona-Bayonas A, Sánchez Lorenzo ML, *et al.* Prognostic significance of performing universal HER2 testing in cases of advanced gastric cancer. *Gastric Cancer* 2017; 20: 465–474.
4. Bang YJ, Van Cutsem E, Feyereislova A, *et al.* Trastuzumab in combination with chemotherapy versus chemotherapy alone for treatment of HER2-positive advanced gastric or gastro-oesophageal junction cancer (ToGA): a phase 3, open-label, randomised controlled trial. *Lancet* 2010; 376: 687–697.
5. Satoh T, Bang Y-J, Gotovkin EA, *et al.* Quality of life in the trastuzumab for gastric cancer trial. *Oncologist* 2014; 19: 712–719.
6. Montagnani F, Turrisi G, Marinozzi C, *et al.* Effectiveness and safety of oxaliplatin compared to cisplatin for advanced, unresectable gastric cancer: a systematic review and meta-analysis. *Gastric Cancer* 2011; 14: 50–55.
7. Enzinger PC, Burtness B, Hollis D, *et al.* CALGB 80403/ECOG 1206: a randomized phase II study of three standard chemotherapy regimens (ECF, IC, FOLFOX) plus cetuximab in metastatic esophageal and GE junction cancer. *J Clin Oncol* 2010; 28(Suppl. 15): 4006.
8. National Comprehensive Cancer Network. NCCN clinical practice guidelines for gastric cancer [Internet]. NCCN Guidelines, p. Version 2.2020, [https://www.nccn.org/professionals/physician\\_gls/pdf/gastric.pdf](https://www.nccn.org/professionals/physician_gls/pdf/gastric.pdf) (accessed 11 March 2019).
9. Muro K, Van Cutsem E, Narita Y, *et al.* Pan-Asian adapted ESMO Clinical Practice

- Guidelines for the management of patients with metastatic gastric cancer: a JSMO–ESMO initiative endorsed by CSCO, KSMO, MOS, SSO and TOS. *Ann Oncol* 2018; 30: 19–33.
10. ter Veer E, Creemers A, de Waal L, *et al.* Comparing cytotoxic backbones for first-line trastuzumab-containing regimens in human epidermal growth factor receptor 2-positive advanced oesophagogastric cancer: a meta-analysis. *Int J Cancer* 2018; 143: 438–448.
  11. Ryu M-H, Yoo C, Kim JG, *et al.* Multicenter phase II study of trastuzumab in combination with capecitabine and oxaliplatin for advanced gastric cancer. *Eur J Cancer* 2015; 51: 482–488.
  12. Gong J, Liu T, Fan Q, *et al.* Optimal regimen of trastuzumab in combination with oxaliplatin/capecitabine in first-line treatment of HER2-positive advanced gastric cancer (CGOG1001): a multicenter, phase II trial. *BMC Cancer* 2016; 16: 68.
  13. Soularue E, Cohen R, Tournigand C, *et al.* Efficacy and safety of trastuzumab in combination with oxaliplatin and fluorouracil-based chemotherapy for patients with HER2-positive metastatic gastric and gastro-oesophageal junction adenocarcinoma patients: a retrospective study. *Bull Cancer* 2015; 102: 324–331.
  14. George SL. *Selection bias, phase II trials, and the FDA accelerated approval process*. Oxford: Oxford University Press, 2003.
  15. Kahan BC, Rehal S and Cro S. Risk of selection bias in randomised trials. *Trials* 2015; 16: 1–7.
  16. Jimenez-Fonseca P, Carmona-Bayonas A, de Castro EM, *et al.* External validity of docetaxel triplet trials in advanced gastric cancer: are there patients who still benefit? *Gastric Cancer*. Epub ahead of print 24 September 2020. DOI: 10.1007/s10120-020-01116-x.
  17. Visa L, Jiménez-Fonseca P, Martínez EA, *et al.* Efficacy and safety of chemotherapy in older versus non-older patients with advanced gastric cancer: a real-world data, non-inferiority analysis. *J Geriatr Oncol* 2017; 9: 254–264.
  18. Cotes Sanchís A, Gallego J, Hernandez R, *et al.* Second-line treatment in advanced gastric cancer: data from the Spanish AGAMENON registry. *PLoS One* 2020; 15: e0235848.
  19. Carmona-Bayonas A, Jiménez-Fonseca P, Garrido M, *et al.* Multistate models: accurate and dynamic methods to improve predictions of thrombotic risk in patients with cancer. *Thromb Haemost* 2019; 119: 1849–1859.
  20. Custodio A, Carmona-Bayonas A, Jiménez-Fonseca P, *et al.* Nomogram-based prediction of survival in patients with advanced oesophagogastric adenocarcinoma receiving first-line chemotherapy: a multicenter prospective study in the era of trastuzumab. *Br J Cancer* 2017; 116: 1526–1535.
  21. Viúdez A, Carmona-Bayonas A, Gallego J, *et al.* Optimal duration of first-line chemotherapy for advanced gastric cancer: data from the AGAMENON registry. *Clin Transl Oncol*. Epub ahead of print 5 August 2019. DOI: 10.1007/s12094-019-02183-y.
  22. Carmona-Bayonas A, Jiménez-Fonseca P, Echavarría I, *et al.* Surgery for metastases for esophageal-gastric cancer in the real world: data from the AGAMENON National Registry. *Eur J Surg Oncol* 2018; 44: 1191–1198.
  23. Jiménez Fonseca P, Carmona-Bayonas A, Hernández R, *et al.* Lauren subtypes of advanced gastric cancer influence survival and response to chemotherapy: real-world data from the AGAMENON National Cancer Registry. *Br J Cancer* 2017; 117: 775–782.
  24. Carmona-Bayonas A, Jiménez-Fonseca P, Lorenzo MLS, *et al.* On the effect of triplet or doublet chemotherapy in advanced gastric cancer: results from a National Cancer Registry. *J Natl Compr Canc Netw* 2016; 14: 1379–1388.
  25. Carmona-Bayonas A, Jiménez-Fonseca P, Custodio A, *et al.* Anthracycline-based triplets do not improve the efficacy of platinum-fluoropyrimidine doublets in first-line treatment of advanced gastric cancer: real-world data from the AGAMENON National Cancer Registry. *Gastric Cancer* 2017; 21: 96–105.
  26. Harrell FE Jr. Package ‘rms’. [Internet], p. 229, <http://cran.r-project.org/web/packages/rms/index.html> (2015, accessed 1 January 2020).
  27. Wickham H. *ggplot2: elegant graphics for data analysis*. New York, NY: Springer-Verlag, 2016.
  28. Ter Veer E, Haj Mohammad N, van Valkenhoef G, *et al.* The efficacy and safety of first-line chemotherapy in advanced esophagogastric cancer: a network meta-analysis. *J Natl Cancer Inst* 2016; 108: djw166.
  29. Jansen JP, Fleurence R, Devine B, *et al.* Interpreting indirect treatment comparisons and network meta-analysis for health-care decision making: report of the ISPOR Task Force on indirect treatment comparisons good research practices: part 1. *Value Health* 2011; 14: 417–428.
  30. Rivera F, Romero C, Jimenez-Fonseca P, *et al.* Phase II study to evaluate the efficacy of trastuzumab in combination with capecitabine

- and oxaliplatin in first-line treatment of HER2-positive advanced gastric cancer: HERXO trial. *Cancer Chemother Pharmacol* 2019; 83: 1–7.
31. Felici A, Di Segni S, Contestabile M, *et al.* Dose scheduling and pharmacokinetic (PK) study of trastuzumab in patients (pts) with HER2/neu overexpressing breast cancer? *J Clin Oncol* 2007; 25(Suppl. 18): 1109.
  32. Li W, Zhao X, Wang H, *et al.* Maintenance treatment of Uracil and Tegafur (UFT) in responders following first-line fluorouracil-based chemotherapy in metastatic gastric cancer: a randomized phase II study. *Oncotarget* 2017; 8: 37826.
  33. Reichelt U, Duesedau P, Tsourlakis MC, *et al.* Frequent homogeneous HER-2 amplification in primary and metastatic adenocarcinoma of the esophagus. *Mod Pathol* 2007; 20: 120–129.
  34. Shah MA, Kang Y-K, Thuss-Patience PC, *et al.* Biomarker analysis of the GATSBY study of trastuzumab emtansine versus a taxane in previously treated HER2-positive advanced gastric/gastroesophageal junction cancer. *Gastric Cancer* 2019; 22: 803–816.
  35. Kaito A, Kuwata T, Tokunaga M, *et al.* HER2 heterogeneity is a poor prognosticator for HER2-positive gastric cancer. *World J Clin Cases* 2019; 7: 1964.
  36. Sanchez-Vega F, Hechtman JF, Castel P, *et al.* EGFR and MET amplifications determine response to HER2 inhibition in ERBB2-amplified esophagogastric cancer. *Cancer Discov* 2019; 9: 199–209.
  37. Xu C, Liu Y, Jiang D, *et al.* Poor efficacy response to trastuzumab therapy in advanced gastric cancer with homogeneous HER2 positive and non-intestinal type. *Oncotarget* 2017; 8: 33185.
  38. Rébé C, Demontoux L, Pilot T, *et al.* Platinum derivatives effects on anticancer immune response. *Biomolecules* 2020; 10: 13.

Visit SAGE journals online  
[journals.sagepub.com/  
 home/tam](https://journals.sagepub.com/home/tam)

 SAGE journals