



THE UNIVERSITY *of* EDINBURGH

Edinburgh Research Explorer

Genetic Risk Score for Intracranial Aneurysms

Citation for published version:

HUNT All-In Stroke, CADISP group, International Consortium for Blood Pressure, International Headache Genetics Consortium, International Stroke Genetics Consortium (ISGC) Intracranial Aneurysm Working Group 2023, 'Genetic Risk Score for Intracranial Aneurysms: Prediction of Subarachnoid Hemorrhage and Role in Clinical Heterogeneity', *Stroke*, vol. 54, no. 3, pp. 810-818.
<https://doi.org/10.1161/STROKEAHA.122.040715>

Digital Object Identifier (DOI):

[10.1161/STROKEAHA.122.040715](https://doi.org/10.1161/STROKEAHA.122.040715)

Link:

[Link to publication record in Edinburgh Research Explorer](#)

Document Version:

Publisher's PDF, also known as Version of record

Published In:

Stroke

General rights

Copyright for the publications made accessible via the Edinburgh Research Explorer is retained by the author(s) and / or other copyright owners and it is a condition of accessing these publications that users recognise and abide by the legal requirements associated with these rights.

Take down policy

The University of Edinburgh has made every reasonable effort to ensure that Edinburgh Research Explorer content complies with UK legislation. If you believe that the public display of this file breaches copyright please contact openaccess@ed.ac.uk providing details, and we will remove access to the work immediately and investigate your claim.





Genetic Risk Score for Intracranial Aneurysms: Prediction of Subarachnoid Hemorrhage and Role in Clinical Heterogeneity

Mark K. Bakker¹, PhD; Jos P. Kanning, MSc; Gad Abraham², PhD; Amy E. Martinsen³, MSc; Bendik S. Winsvold⁴, MD, PhD; John-Anker Zwart⁵, MD, PhD; Romain Bourcier⁶, MD, PhD; Tomonobu Sawada, MD, PhD; Masaru Koido⁷, PhD; Yoichiro Kamatani, MD, PhD; Sandrine Morel⁸, PhD; Philippe Amouyel⁹, MD, PhD; Stéphanie Debette¹⁰, MD, PhD; Philippe Bijlenga, MD, PhD; Takiy Berrandou¹¹, PhD; Santhi K. Ganesh¹², MD; Nabila Bouatia-Naji¹³, PhD; Gregory Jones¹⁴, PhD; Matthew Bown¹⁵, MD; HUNT All-In Stroke, CADISP group, International Consortium for Blood Pressure, International Headache Genetics Consortium, International Stroke Genetics Consortium (ISGC) Intracranial Aneurysm Working Group,* Gabriel J.E. Rinkel, MD; Jan H. Veldink¹⁶, MD, PhD; Ynte M. Ruigrok¹⁷, MD, PhD

BACKGROUND: Recently, common genetic risk factors for intracranial aneurysm (IA) and aneurysmal subarachnoid hemorrhage (ASAH) were found to explain a large amount of disease heritability and therefore have potential to be used for genetic risk prediction. We constructed a genetic risk score to (1) predict ASAH incidence and IA presence (combined set of unruptured IA and ASAH) and (2) assess its association with patient characteristics.

METHODS: A genetic risk score incorporating genetic association data for IA and 17 traits related to IA (so-called metaGRS) was created using 1161 IA cases and 407 392 controls from the UK Biobank population study. The metaGRS was validated in combination with risk factors blood pressure, sex, and smoking in 828 IA cases and 68 568 controls from the Nordic HUNT population study. Furthermore, we assessed association between the metaGRS and patient characteristics in a cohort of 5560 IA patients.

RESULTS: Per SD increase of metaGRS, the hazard ratio for ASAH incidence was 1.34 (95% CI, 1.20–1.51) and the odds ratio for IA presence 1.09 (95% CI, 1.01–1.18). Upon including the metaGRS on top of clinical risk factors, the concordance index to predict ASAH hazard increased from 0.63 (95% CI, 0.59–0.67) to 0.65 (95% CI, 0.62–0.69), while prediction of IA presence did not improve. The metaGRS was statistically significantly associated with age at ASAH ($\beta = -4.82 \times 10^{-3}$ per year [95% CI, -6.49×10^{-3} to -3.14×10^{-3}]; $P = 1.82 \times 10^{-8}$), and location of IA at the internal carotid artery (odds ratio = 0.92 [95% CI, 0.86–0.98]; $P = 0.0041$).

CONCLUSIONS: The metaGRS was predictive of ASAH incidence, although with limited added value over clinical risk factors. The metaGRS was not predictive of IA presence. Therefore, we do not recommend using this metaGRS in daily clinical care. Genetic risk does partly explain the clinical heterogeneity of IA warranting prioritization of clinical heterogeneity in future genetic prediction studies of IA and ASAH.

GRAPHIC ABSTRACT: A [graphic abstract](#) is available for this article.

Keywords: aneurysmal subarachnoid hemorrhage ■ genetic heterogeneity ■ genetics ■ intracranial aneurysm ■ risk assessment

Correspondence to: Mark K. Bakker, PhD, Department of Neurology, University Medical Center Utrecht Brain Center, Heidelberglaan 100, 3584 CX Utrecht, the Netherlands, Email m.k.bakker-25@umcutrecht.nl or Ynte M. Ruigrok, MD, PhD, Department of Neurology, University Medical Center Utrecht Brain Center, Heidelberglaan 100, 3584 CX Utrecht, the Netherlands, Email ij.m.ruigrok@umcutrecht.nl

*A list of all Consortium authors is given in the [Supplemental Material](#).

Supplemental Material is available at <https://www.ahajournals.org/doi/suppl/10.1161/STROKEAHA.122.040715>.

Preprint posted on medRxiv April 29, 2022. doi: <https://doi.org/10.1101/2022.04.29.22274404>.

© 2023 The Authors. *Stroke* is published on behalf of the American Heart Association, Inc., by Wolters Kluwer Health, Inc. This is an open access article under the terms of the [Creative Commons Attribution](#) License, which permits use, distribution, and reproduction in any medium, provided that the original work is properly cited.

Stroke is available at www.ahajournals.org/journal/str

Nonstandard Abbreviations and Acronyms

ASAH	aneurysmal subarachnoid hemorrhage
GRS	genetic risk score
GWAS	genome-wide association study
HR	hazard ratio
IA	intracranial aneurysm
ICA	internal carotid artery
ISGC	international stroke genetics consortium
MCA	middle cerebral artery
metaGRS	meta-genetic risk score
PCOM	posterior communicating artery
SNP	single-nucleotide polymorphism
UIA	unruptured intracranial aneurysm

Rupture of an intracranial aneurysm (IA) leads to aneurysmal subarachnoid hemorrhage (ASAH), a severe type of stroke causing death in one-third of the cases, and permanent disability in another third.¹ It is one of the few cardiovascular diseases in which women are at higher risk than men and is caused by a complex interplay of genetic factors and environmental risk factors,^{2,3} including smoking and hypertension.^{4,5} Aneurysmal rupture can be prevented by endovascular treatment or surgery, with relatively low risk of complications compared to the high case fatality and morbidity of ASAH.⁶ Therefore, prediction of ASAH has high potential in reducing disease burden.

See related article, p 819

Genetic risk scores (GRSs) showed potential in risk prediction of common diseases.⁷ New techniques improved prediction potential of GRSs by (1) providing methods to include a large number of genetic variants⁸ and (2) combining GRSs for multiple traits (a so-called metaGRS), leading to improved prediction of, among others, coronary artery disease and ischemic stroke.^{9,10} These advances, combined with the finding that single-nucleotide polymorphisms (SNPs) capture a substantial amount of heritability of IA (SNP-based heritability of 21.6%) in the latest genome-wide association study (GWAS) of IA,² provide an opportunity for genetic risk prediction of IA.

A broad spectrum of clinical heterogeneity of IAs exists, including number, size, and different locations of IAs.^{11,12} A GRS constructed with only 7 SNPs was higher in patients with IAs at the middle cerebral artery compared to those with IAs at other locations, in a cohort of 1691 IA patients.¹³ In a cohort of 4890 patients of whom 109 had an unruptured IA (UIA), a 10-SNP GRS was associated with aneurysmal diameter and volume.¹⁴ These studies show a potential link between genetic predisposition and patient characteristics, but additional studies using larger populations and assessing SNPs across the genome are warranted.

We created a metaGRS for IA that incorporates GWAS summary statistics for IA together with summary statistics for other stroke subtypes and risk factors for IA, to assess its predictive performance for ASAH incidence and IA presence. In addition, we assessed how the metaGRS associates with clinical characteristics of IA patients.

METHODS

This article adheres to the PRS-RS reporting guidelines.¹⁵

Ethics Statement

Written informed consent was obtained from all participants. The Biobanks Review Committee of the University Medical Center Utrecht gave ethical approval for the use of genotype and phenotype data of these participants.

Data Availability

The metaGRS per-SNP weights are available here: <https://doi.org/10.6084/m9.figshare.19672272> (including UK Biobank) and here: <https://doi.org/10.6084/m9.figshare.19672269> (excluding UK Biobank).

Methods Overview

Figure 1 shows an overview of the study methods. In short, trait-level GRSs were constructed using summary statistics of the largest publicly available GWASs of IA and related traits (N=7495 cases and 71 934 controls of European ancestry; [Table S1](#)). Optimal GRS model selection, and combining these GRSs into a metaGRS, was performed using the UK Biobank, a prospective population-based cohort including 1161 IA patients (959 with ASAH and 202 with UIA) and 407 392 controls (Figure 1A; [Table 1](#)). Predictive performance of the metaGRS was assessed in the HUNT prospective population-based cohort study including 828 IA patients (318 with ASAH and 510 with UIA) and 68 568 controls ([Table 1](#)). Associations between metaGRS and patient characteristics were assessed in the well-phenotyped cohort of the international stroke genetics consortium (ISGC, www.strokegenetics.org) IA working group (ISGC-IA), including 5560 IA patients of whom 3918 with ASAH and 1642 with UIA ([Table S2](#)).¹⁶

Constructing the metaGRS

Methods of the metaGRS construction are shown in Figure 1A. Summary statistics of large GWASs of IA and 24 traits with an established or putative association with IA were obtained. These 24 traits included (references and study info in [Table S1](#)): (1) established risk factors for IA and/or ASAH, being diastolic and systolic blood pressure (SBP), smoking (cigarettes per day), and alcohol consumption (drinks per week)^{4,5,17–19}; (2) suggestive risk factors including those related to female hormones (age at menarche, age at menopause and number of births),²⁰ and cardiovascular disease risk (diabetes type II, body mass index, waist-to-hip ratio, low- and high density lipoprotein levels, total cholesterol, and triglyceride levels),^{19,21,22} migraine,²³ epilepsy (focal and generalized), years of education²⁴; and (3) diseases genetically correlated with IA, being intracerebral hemorrhage, ischemic stroke, abdominal aortic aneurysms,

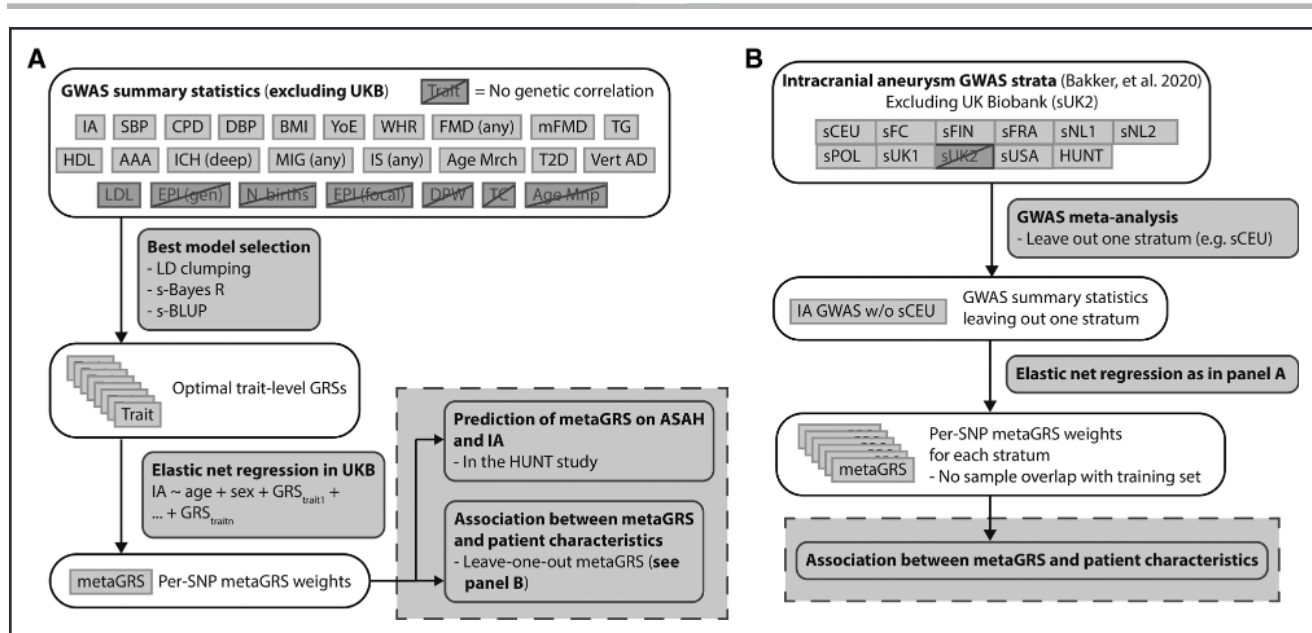


Figure 1. Overview of constructing the metaGRS.

A, Steps to create the metaGRS used for prediction in the HUNT (Nordic HUNT study). **B**, Steps to create intracranial aneurysm (IA) GWAS summary statistics to be included in an adjusted metaGRS version for phenotype-genotype correlation analysis. Single IA GWAS strata were excluded from the IA GWAS in a leave-one-out manner prior to the “Best model selection” step in **A**. AAA indicates abdominal aortic aneurysm; Age Mnp, age at menopause; Age Mrch, age at menarche; BMI, body mass index; CPD, cigarettes per day; DBP, diastolic blood pressure; DPW, alcoholic drinks per week; EPI (focal), focal epilepsy; EPI (gen), generalized epilepsy; FMD (any), any fibromuscular dysplasia; HDL, high-density lipoprotein; HUNT, Nordic HUNT study; ICH (deep), deep intracerebral hemorrhage; IS (any), any ischemic stroke; LDL, low-density lipoprotein; mFMD, multifocal fibromuscular dysplasia; MIG (any), any migraine; N births, number of births; SBP, systolic blood pressure; sCEU, stratum of mixed European ancestry; sFC, French Canadian; sFIN, Finnish; sFRA, France; sNL1; sNL2, Netherlands; sPOL, Poland; sUK1; sUK2, United Kingdom; sUSA, United States of America; T2D, type II diabetes; TC, total cholesterol; TG, triglycerides; Vert AD, vertebral artery dissection; WHR, waist-to-hip ratio; and YoE, years of education.

and fibromuscular dysplasia (multifocal and any type); and (4) vascular disease vertebral artery dissections which showed a nominal genetic correlation with IA before.² Only individuals of European-ancestry were included while UK Biobank participants were excluded. Data pre-processing steps are described in the [Supplemental Material](#).

For traits genetically correlated with IA ($P < 0.05$) trait-level GRSs were created ([Supplemental Material](#)) using 3 methods: LD-based clumping with 9 different LD thresholds, summary statistics-based best linear unbiased predictor²⁵ and summary statistics-based BayesR⁸ (Figure 1A; [Supplemental Material](#)). To assess whether the trait-level GRSs captured risk of the respective trait, we tested whether the optimal trait-level GRS was associated with that trait in the UK Biobank, and tested whether including the trait-level GRS led to a higher area under the curve (AUC) or R^2 compared to a reference model (for example, the trait-level GRS for SBP being associated with SBP in the UK biobank). Samples with a missing genotype value for a variant were ignored for association with that variant, while samples with missing phenotype were excluded ([Supplemental Material](#) for detailed methods).

For each trait, the trait-level GRS with the highest Nagelkerke pseudo- R^2 in predicting IA status in the UK Biobank cohort was selected ([Table S3](#)) and subsequently jointly analyzed in an elastic-net regression to obtain per-trait weights (Figure 1A). Traits with an effect in the elastic-net regression were included in the metaGRS. Trait-level SNP weights were scaled according to the per-trait elastic net weights and population standard deviation, and then

summed over traits to create metaGRS SNP weights (see [Supplemental Material](#) for extensive methods). These analyses were performed for the whole cohort and for men and women separately. A separate GRS was constructed only considering the IA GRS, to assess potential added value of incorporating genetic association data of multiple traits in a metaGRS compared to an IA-only GRS.

Prediction of ASAH and IA by the metaGRS

Prediction by the metaGRS was evaluated in the HUNT study in 2 models: (1) for ASAH incidence using cox regression with age at ASAH as outcome and age at last assessment for controls as censoring time, and (2) for IA presence (including both UIA and ASAH) using a logistic regression with IA case-control status as outcome. For logistic regression; age, SBP, and average smoking packs per day since age 16 (SBP and smoking as 3-knot polynomial spline), were included as covariates. For Cox regression, age was left out as covariate (further details described in the [Supplemental Material](#)). The added value of specific predictors was assessed using various models: (1) a reference model (sex and age), clinical model (only sex, age, SBP, and smoking), (2) a reference+metaGRS model, (3) a full model (clinical model+metaGRS), and (4) models leaving out a single predictor from the full model. Predictive value was determined in the HUNT study using a metaGRS created with GWAS summary statistics for IA leaving out samples from the HUNT study (Figure 1B). The statistical significance of comparing the different models in their predictive ability was assessed using a DeLong test for IA presence (R package

Table 1. Baseline Characteristics of the Study Populations

Characteristic	UK Biobank	HUNT study	ISGC-IA phenotype cohort
Age, y; mean (SD)	65.3 (8.0)	53.7 (17.5)	53.3 (13.0)*
Women, N (%)	220 835 (54.1%)	36 887 (53.0%)	3786 (68.1%)
IA cases, N (%)	1161 (0.28%)	828 (1.2%)	5560 (100%)
ASAH cases, N (%)	959 (0.23%)	318 (0.46%)	3916 (70.4%)
Controls, N	407 392	68 568	Not applicable
SBP, mean (SD)	138.2 (18.1)	134.4 (21.1)	No data
Self-reported hypertension, N (%)†	No data	No data	2150 (39.4%)
Ever smokers, N (%)	123 604 (30.3%)	35 204 (50.6%)	3481 (69.4%)
Smoking packs/d, mean (SD)‡	0.56 (0.42)	0.39 (0.30)	No data

UK Biobank characteristics are estimated based on the most recent assessment date. ASAH indicates aneurysmal subarachnoid hemorrhage; IA, intracranial aneurysm; ISGC, international stroke genetics consortium; and SBP, systolic blood pressure.

*Packs/day are cumulative pack-years divided by age minus 16 for ever smokers only.

†In the ISGC-IA phenotype cohort, only self-reported hypertension was recorded.

‡In the ISGC-IA cohort, only age at ASAH was recorded, and these numbers are shown.

Daim), and by net reclassification index and integrated discrimination index for ASAH incidence (R package survIDINRI).

Association Between metaGRS and Patient Characteristics

The ISGC-IA phenotype cohort of 5560 IA patients was used to determine the association of the metaGRS with the following patient characteristics: sex, smoking status (ever or never), self-reported hypertension, age at ASAH, and family history of IA (≥ 1 first degree relative with ASAH and/or UIA), IA location, number of IAs (single versus multiple), rupture status (UIA versus ASAH), and aneurysmal size at rupture. Locations of IA were grouped: (1) internal carotid artery (ICA) including the ICA, ophthalmic artery, and cavernous artery, (2) posterior communicating artery, (3) anterior cerebral arteries including the A1 anterior segment, anterior communicating artery, and A2 segment, (4) middle cerebral artery, and (5) posterior circulation (PC), including the vertebrobasilar system. IAs at other locations were excluded from these analyses.

Since most cases of the ISGC-IA phenotype cohort were included in the IA GWAS, we created stratum-specific metaGRSs leaving out samples from the ISGC-IA phenotype cohort one GWAS stratum at a time from the IA GWAS summary statistics, resulting in 9 metaGRS versions (Figure 1B; Supplemental Material). To control for differences in metaGRS versions between strata, we used the different cohorts of the ISGC-IA phenotype cohort (Table S4) as covariate in all subsequent analyses.

We calculated associations between metaGRS and patient characteristics, correcting for sex and cohort using a generalized linear model. We tested whether statistically significantly associated phenotypes were independently associated from one another using a multivariate model. For each phenotype, samples with missing values were excluded for analysis of that specific phenotype. In analyses studying the association with IA location, we included only patients with one IA. Statistical analyses were done in R 4.1.2. Statistical significance was determined by Bonferroni correction for the number of phenotypes in the primary analyses: rupture status, sex, family history,

IA multiplicity, 5 locations, age at ASAH, and size at rupture ($P < 0.05/11$). More details on the statistics are described in the Supplemental Material.

RESULTS

Constructing the metaGRS

Seventeen out of 24 traits showed genetic correlation with IA ($P < 0.05$; Figure 1; Table S5). All trait-level GRSs, except for the GRS of intracerebral hemorrhage, were associated with their respective phenotypes in the UK Biobank, validating the method for obtaining the trait-level GRSs (Table S6). Elastic-net regression weights for each trait-level GRS are shown in Table S7. In total, 7 078 955 SNPs were included in the metaGRS. In separate models trained in only men or women in the UK Biobank, 6 618 190 and 6 671 269 SNPs remained, respectively.

Prediction of ASAH by the metaGRS

Characteristics of the HUNT study validation cohort are shown in Table 1. The metaGRS ranged from -0.83 to $+0.50$, with mean -0.22 and SD 0.14 . The metaGRS showed improved prediction of ASAH incidence compared to a reference model including only sex (hazard ratio [HR]=1.34 [95% CI, 1.20–1.51]; $P=6.1 \times 10^{-7}$; Table S8). The C-index increased from 0.53 (95% CI, 0.49–0.56) to 0.58 (95% CI, 0.55–0.62) upon including the metaGRS to the reference model $P_{\text{crimination_index}} < 1 \times 10^{-8}$; $P_{\text{net_reclassification_index}} = 0.14$; $P_{\text{integrated_dis-}} = 0.14$; Table S9). The metaGRS seemed to outperform a GRS constructed using only summary statistics of IA (HR reference model+IA-only GRS=1.25 [95% CI, 1.12–1.41], C-index=0.57 [95% CI, 0.53–0.61]). Maximum prediction was reached upon including the metaGRS on top of clinical risk factors, where the C-index increased from

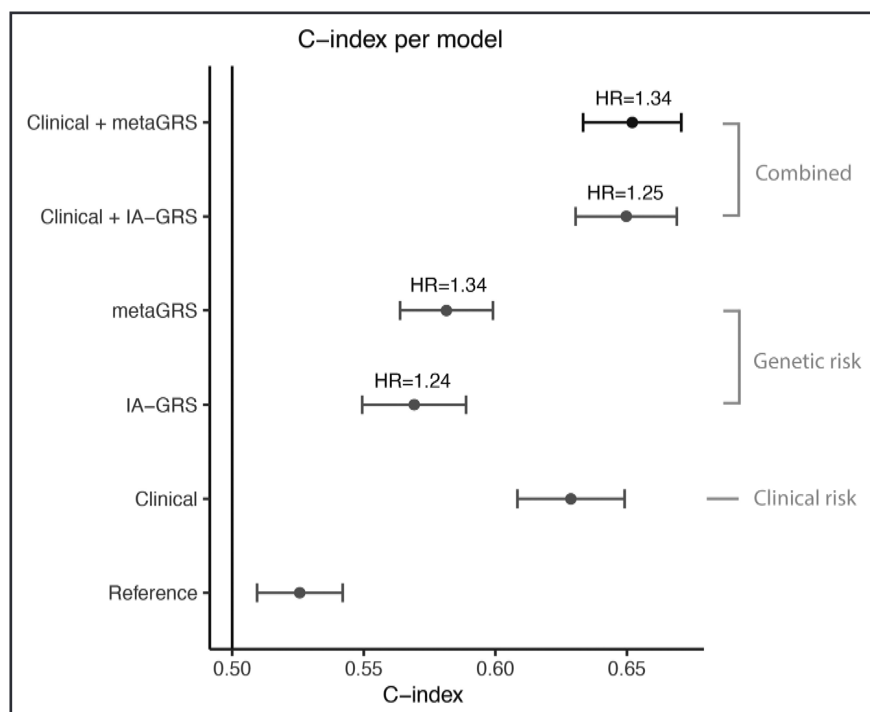


Figure 2. Prediction of aneurysmal subarachnoid hemorrhage (ASAH) using the metaGRS in the HUNT study.

C-index according to different combinations of clinical risk factors and metaGRS are shown. Error bars denote 95% CIs. HR: hazard ratio per SD-specified genetic risk score (GRS). Reference: model including only sex. Clinical: model including sex, intracranial aneurysm (IA), systolic blood pressure, and smoking.

0.63 (95% CI, 0.59–0.67) to 0.65 ([95% CI, 0.62–0.69]; $P_{\text{integrated_discrimination_index}}=0.09$; $P_{\text{net_reclassification_index}}=0.25$; Table S9; Figure 2).

In the model trained in women in the UK Biobank and validated in women in the HUNT study, the metaGRS alone had a greater effect compared to the model of both women and men and the model of men only (women: HR per SD of metaGRS=1.36 [95% CI, 1.18–1.60], men: 1.12 [95% CI, 0.93–1.34]; Figure S1; Table S8). Similarly, clinical risk factors combined provided better prediction in women, and worse in men (women: C-index=0.71 [95% CI, 0.67–0.75], men: 0.57 [95% CI, 0.52–0.62]; Table S9). Furthermore, metaGRS outperformed IA-only GRS in women, similar to what was observed in the whole cohort (IA-only GRS in women: HR=1.30 [95% CI, 1.11–1.51]).

Prediction of IA by the metaGRS

In prediction of IA presence (either UIA or ASAH) in the HUNT study, the metaGRS provided a small but statistically significant effect (odds ratio [OR]=1.09 [95% CI, 1.01–1.18]; Table S10). The metaGRS did not improve prediction above a model including clinical risk factors (AUC clinical model=0.76 [95% CI, 0.75–0.78], AUC clinical+metaGRS=0.76 [95% CI, 0.75–0.78]; P -value of difference=0.15; Figure S2; Table S11). Only the predictors age and SBP showed independent added value (Δ AUC excluding age versus full model=–0.067 [95% CI, –0.083 to –0.051]; $P=1.1 \times 10^{-16}$, Δ AUC excluding SBP=–0.01 [95% CI, –0.005 to –0.018]; $P=2.9 \times 10^{-4}$).

Association Between metaGRS and Patient Characteristics

In the ISGC-IA phenotype cohort, patients with multiple IAs had a higher metaGRS than patients with a single IA, with nominal statistical significance (OR=1.05 [95% CI, 1.01–1.09]; $P=0.010$; Table 2; Figure 3A). Younger age at ASAH was associated with a higher metaGRS ($\beta=-4.82 \times 10^{-3}$ per year [95% CI, -6.49×10^{-3} to -3.14×10^{-3} ; $P=1.82 \times 10^{-8}$; Figure 3B). Accordingly, the effect of 1 SD increase of metaGRS on age at ASAH was –1.70 (95% CI, –2.30 to –1.11) years. Assuming a linear effect this equates to patients with a top 5% metaGRS suffering ASAH on average 2.80 (95% CI, 1.83–3.77) years earlier compared with patient with a mean metaGRS, while this is 3.96 (95% CI, 2.59–5.34) years earlier in patients with a top 1% versus mean metaGRS. Of all aneurysmal locations, only patients with an IA at the ICA had lower genetic risk (OR=0.92 [95% CI, 0.86 to 0.98]; $P=0.0041$; Figure 3C; Figures S3 through S7). This effect reduced and was not statistically significant anymore when considering ruptured IAs only (OR=0.94 [95% CI, 0.86–1.03]; $P=0.16$; Figures S8 through S12). No effect was observed for sex, positive family history, rupture status of an IA, or aneurysmal size at rupture (Table 2; Figures S13 through S16). A higher metaGRS was associated with hypertension (OR=1.10 [95% CI, 1.06–1.14]; $P=3.82 \times 10^{-7}$) and ever smokers (OR=1.14 [95% CI, 1.10–1.18]; $P=9.30 \times 10^{-10}$; Table S12; Figures S17 and S18), which is expected due to including summary statistics for these traits in the metaGRS.

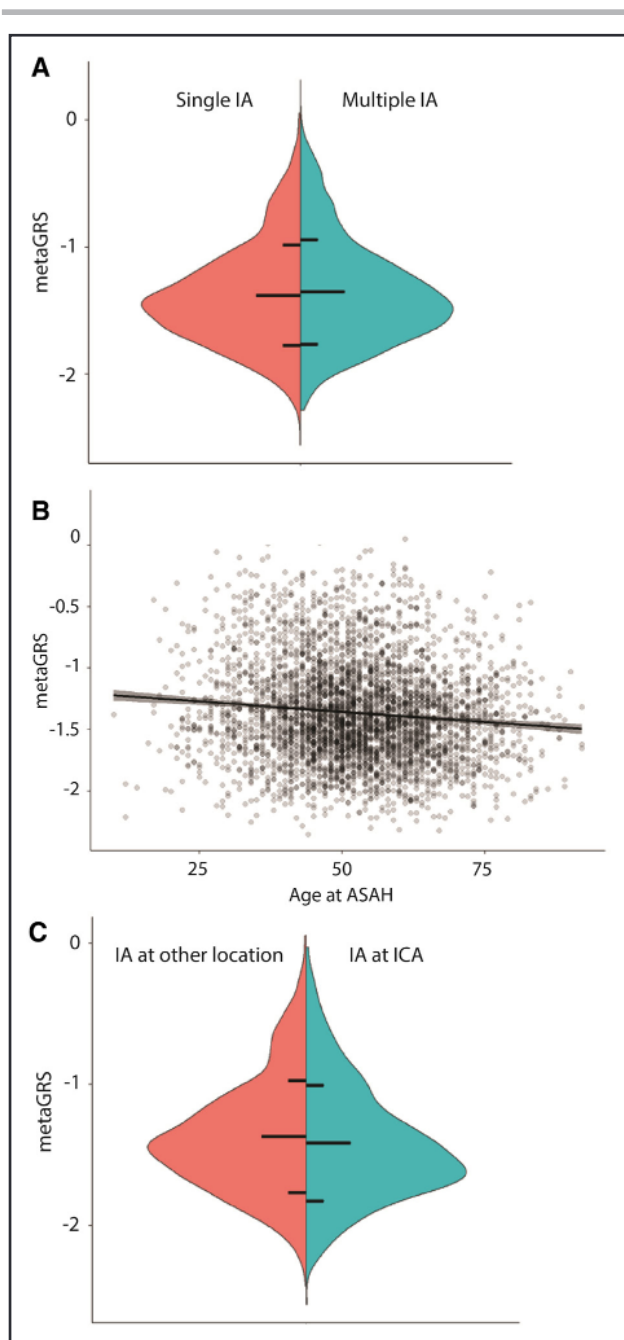


Figure 3. Association of metaGRS with patient characteristics.

The metaGRS was transformed to mean 0, variance 1. **A**, metaGRS according to single or multiple intracranial aneurysms (IAs). Horizontal lines correspond to population mean (middle line), and mean \pm one population SD. **B**, Effect of age at aneurysmal subarachnoid hemorrhage (ASAH) on metaGRS. Line denotes regression line, with shared area being the 95% CI. **C**, Effect of having an IA at the internal carotid artery (ICA) versus other locations, on the metaGRS.

In the multivariate model, the association of multiple IAs with metaGRS was not independent of smoking and hypertension (OR=1.03 [95% CI, 0.99–1.08]; $P=0.16$). Upon including smoking and hypertension, the effect of location at the ICA slightly reduced and became nominally statistically significant (OR=0.93 [95% CI,

0.87–0.99]; $P=0.021$), while the association between age at ASAH and metaGRS remained essentially the same ($\beta=-5.2 \times 10^{-3}$ per year [95% CI, -7.03×10^{-3} to -3.30×10^{-3}]; $P=6.15 \times 10^{-8}$; Table S13 through S15). Since the mean metaGRS was higher in persons from Finland (Figure S19) we performed the associations analyses on multiple IAs, location at the ICA, or age at ASAH excluding these persons, but the effect sizes remained essentially the same (Table S16).

DISCUSSION

We created a metaGRS for IA based on GWAS summary statistics for IA and 17 IA-related traits and showed that this metaGRS was predictive of ASAH incidence but not of IA presence. The metaGRS led to only limited improved prediction of ASAH on top of clinical risk factors. We demonstrated that prediction by the metaGRS for ASAH, which disease is seen more often in women than in men,^{4,5} performs better in women than in men. Last, we showed that the metaGRS was higher in patients who suffered ASAH at a younger age and lower in patients with an IA located at the ICA, with both associations being independent of hypertension and smoking.

In a previous study, no association was found between UIA, and genetic risk using a 10-SNP GRS in 109 persons with UIA and 4781 controls.¹⁴ This may be explained by the low number of patients studied and SNPs included in the GRS. Otherwise, it may be argued that the lack of association is caused by the fact that only UIAs were studied as in our study we were also unable to predict IA presence (combined group of UIA or ASAH) with our metaGRS. However, we think that in our study, we were unable to predict IA presence because many UIAs are likely to be left undetected since UIAs are often incidental findings and therefore have a high chance of not being diagnosed in participants of observational population cohorts as used in our study.²⁶ This probably resulted in low statistical power for prediction of UIA alone or in combination with ASAH. In the previous study on 109 persons with UIA and 4781 controls, all participants were systematically screened with for UIAs using brain MRI.¹⁴ To improve prediction in the future, we recommend confirming absence of IA in controls.

MetaGRSs have been developed for other cardiovascular diseases, including ischemic stroke and coronary artery disease.^{9,10} Here, we found a hazard ratio per SD of metaGRS for prediction of ASAH of 1.34 (95% CI, 1.20–1.51), which was lower than the one previously assessed for coronary artery disease (HR=1.71 [95% CI, 1.68–1.73]) but higher than assessed for ischemic stroke (HR=1.26 [95% CI, 1.22–1.31]).^{9,10} ASAH may be more difficult to predict due to its heterogeneity in characteristics (eg, IA location, size, and rupture risk),^{11,12} and the fact that these characteristics differ between

Table 2. Associations Between metaGRS and Patient Characteristics in the ISGC-IA Phenotype Cohort

Subset	Phenotype	Comparison	P value	Cases/controls	OR/beta*	95% CI
All cases (N=5560)	Ruptured	Yes/no	0.77	3918/1642	1.01	(0.96–1.05)
	Sex	Men/women	0.74	1774/3786	1.01	(0.97–1.04)
	Positive family history	Yes/no	0.80	1258/3666	1.01	((0.95–1.06)
	Multiple aneurysms	Yes/no	0.010	1544/3955	1.05	(1.01–1.09)
Single aneurysm all cases (N=3820)	ICA	ICA/other	0.0041	578/3242	0.92	(0.86–0.98)
	PCOM	PCOM/other	0.94	517/3303	1.00	(0.94–1.06)
	ACA	ACA/other	0.084	1377/2443	1.04	(1.00–1.08)
	MCA	MCA/other	0.78	918/2902	1.01	(0.96–1.06)
	PC	Posterior/anterior	0.75	430/3390	1.01	(0.94–1.08)
Single aneurysm ASAH only (N=2751)	ICA	ICA/other	0.16	257/2494	0.94	(0.85–1.03)
	PCOM	PCOM/other	0.93	445/2306	1.00	(0.93–1.07)
	ACA	ACA/other	0.89	1131/1620	1.00	(0.95–1.05)
	MCA	MCA/other	0.53	597/2154	1.02	(0.96–1.08)
	PC	Posterior/anterior	0.72	321/2430	1.01	(0.94–1.09)
ASAH only (N=3918)	Age at rupture	Years per SD	1.82×10^{-8}	N=3893	-4.82×10^{-3}	$(-6.49 \times 10^{-3} \text{ to } -3.14 \times 10^{-3})$
	Age at rupture (outcome)†	Years per SD	1.82×10^{-8}	N=3893	-1.70	(-2.30 to -1.11)
	Aneurysm size at rupture	Millimeter per SD	0.35	N=2859	2.61×10^{-3}	$(-2.87 \times 10^{-3} \text{ to } 8.10 \times 10^{-3})$

ACA indicates anterior cerebral artery; ASAH, aneurysmal subarachnoid hemorrhage; ICA, internal carotid artery; MCA, middle cerebral artery; PC, posterior circulation; PCOM, posterior communicating artery; and per SD, effect size per SD of the independent variable.

*OR/beta: odds ratio for all phenotypes, or beta for age and aneurysm size and rupture. ISGC-IA: international stroke genetics consortium intracranial aneurysm working group.

†Age as rupture was also used as outcome instead of dependent variable to aid interpretation of the association between metaGRS and age at rupture. Cases/controls: number of persons with/without for the respective phenotype, or total sample size for quantitative phenotypes.

sexes and populations,²⁷ necessitating a more personalized approach.

A previous study indicated that persons with IA at the middle cerebral artery had higher genetic risk than persons with IA at other locations, while no associations were found for aneurysmal size at ASAH, patient age at ASAH, or family history of UIA/ASAH.^{13,14,28} We did not replicate the increased genetic load for patients with an IA at the MCA. Since this effect was found in participants from Finland and the Netherlands, and we included additional countries, this might indicate population-dependent heterogeneity. Alternatively, due to the smaller sample size (N=1613) the previous study may have been more sensitive to false positive findings, meaning there is no true effect. Instead, we found a decreased genetic load in patients with an IA at the ICA, which location was not analyzed in the previous study.¹³ Interestingly, IAs at the ICA also have the lowest rupture risk compared to IA at other locations.²⁹ This could mean that location-specific rupture risks are in part a downstream result of genetic risk factors, but this remains to be confirmed in future studies.

The predictive performance of the metaGRS was in part captured by the inclusion of clinical risk factors smoking and SBP. This further supports the importance of genetic predisposition for smoking and blood pressure in the risk for ASAH.² This could mean that the remaining added value of the metaGRS is driven by additional genetic causes independent of smoking and SBP, or that

the metaGRS better captures lifelong exposure to smoking and SBP than single clinical measurements of these phenotypes.

Prevalence of IA and incidence of ASAH is higher in women than men, in contrast to most other cardiovascular diseases.^{5,26} Here, we found improved prediction of ASAH when the metaGRS was trained and validated in women, and reduced when trained and validated in men. Predictive value of clinical risk factors was also better in women than in men. Sex differences are known in the number and location of IAs, for which characteristics we also showed differences in genetic load.³⁰ To understand the difference in genetic mechanisms of IA between men and women future investigations of genetic risk factors for IA and ASAH need to emphasize on sex differences and interactions between genetic variants and sex.

In summary, we developed a metaGRS which showed predictive ability for ASAH but with only limited added value over clinical risk factors. Therefore, there seems to be no place for its use in clinical practice at the moment. However, genetic risk prediction was better in women than in men, warranting further study on the potential of sex-specific disease prediction in combination with assessment of sex-specific genetic causes of IA. The metaGRS was associated with age at ASAH and IA location, showing further evidence for a role of genetic risk in clinical heterogeneity of IA and this heterogeneity should be prioritized in future genetic studies of IA and ASAH.

ARTICLE INFORMATION

Received July 25, 2022; final revision received November 17, 2020; accepted November 28, 2022.

Affiliations

Department of Neurology and Neurosurgery, University Medical Center Utrecht Brain Center, Utrecht University, the Netherlands (M.K.B., J.P.K., G.J.E.R., Y.M.R., J.H.V.). Cambridge Baker Systems Genomics Initiative, Baker Heart and Diabetes Institute, Melbourne, VIC, Australia (G.A.). Department of Clinical Pathology, University of Melbourne, Parkville, VIC, Australia (G.A.). Department of Research and Innovation, Division of Clinical Neuroscience, Oslo University Hospital, Norway (A.E.M., B.S.W., J.-A.Z.). Institute of Clinical Medicine, Faculty of Medicine, University of Oslo, Norway (A.E.M., J.-A.Z.). K.G. Jebsen Center for Genetic Epidemiology, Department of Public Health and Nursing, NTNU, Norwegian University of Science and Technology, Trondheim, Norway (A.E.M., B.S.W., J.-A.Z.). Department of Neurology, Oslo University Hospital, Norway (B.S.W.). Université de Nantes, CHU Nantes, INSERM, CNRS, l'institut du thorax, France (R.B.). CHU Nantes, Department of Neuroradiology, France (R.B.). Graduate School of Frontier Sciences, The University of Tokyo, Japan (T.S., Y.K.). Laboratory for Statistical and Translational Genetics, RIKEN Center for Integrative Medical Sciences, Yokohama, Japan (M.K.). Department of Cancer Biology, Institute of Medical Science, The University of Tokyo, Japan (M.K.). Neurosurgery Division, Department of Clinical Neurosciences, Faculty of Medicine, Geneva University Hospitals, Switzerland (P.B., S.M.). Department of Pathology and Immunology, Faculty of Medicine, University of Geneva, Switzerland (S.M.). LabEx DISTALZ-U1167, RID-AGE-Risk Factors and Molecular Determinants of Aging-Related Diseases, University of Lille, Lille, France; Inserm U1167, Lille, France; Centre Hospitalier Universitaire Lille, Lille, France; Institut Pasteur de Lille, Lille, France (P.A.). University of Bordeaux, INSERM, Bordeaux Population Health Center, UMR1219, Bordeaux, France (S.D.). Bordeaux University Hospital, Department of Neurology, Institute of Neurodegenerative Diseases, France (S.D.). PARCC, INSERM, Université de Paris, France (T.B., N.B.-N.). Division of Cardiovascular Medicine, Department of Internal Medicine (S.K.G.) and Department of Human Genetics (S.K.G.), University of Michigan Medical School, Ann Arbor. Department of Surgery, University of Otago, Dunedin, New Zealand (G.J.). Department of Cardiovascular Sciences and National Institute for Health Research (M.B.) and Leicester Biomedical Research Centre (M.B.), University of Leicester, Glenfield Hospital, United Kingdom (M.B.).

Acknowledgments

We thank the ICBP consortium, MEGASTROKE consortium, Trøndelag Health Study (HUNT), and the ISGC for providing summary statistics. This research has been conducted using the UK Biobank Resource under application number 2532.

Sources of Funding

We acknowledge the support from the Netherlands Cardiovascular Research Initiative: An initiative with support of the Dutch Heart Foundation (CVON2015-08 ERASE), and the European Research Council (ERC) under the European Union's Horizon 2020 research and innovation program (grant agreement No. 852173). The project was funded in part by NIH grant R35HL161016 and University of Michigan Taubman Institute.

Disclosures

Dr Veldink has sponsored research agreements with Biogen. Dr Abraham is employed by CSL innovation and received a speaking honorarium for Amgen. Dr Koido is a consultant for Takeda Pharmaceutical Company Limited. Dr Kamatani received speaking honoraria for Astellas Pharma, Chugai Pharmaceutical Co. Ltd, Illumina Japan, Sandoz, and Taisho Pharmaceutical Co. Ltd, and is stockholder of StaGen Co. Ltd. Dr Winsvold is local principal investigator in a study for Lundbeck and gave lectures for Novartis and Lundbeck.

Supplemental Material

Checklist
Figures S1–S19
Consortium authors
Tables S1–S16
References 31–34

REFERENCES

- Nieuwkamp DJ, Setz LE, Algra A, Linn FH, de Rooij NK, Rinkel GJ. Changes in case fatality of aneurysmal subarachnoid haemorrhage over time, according to age, sex, and region: a meta-analysis. *Lancet Neurol*. 2009;8:635–642. doi: 10.1016/s1474-4422(09)70126-7
- Bakker MK, van der Spek RAA, van Rheenen W, Morel S, Bourcier R, Hostettler IC, Alg VS, van Eijk KR, Koido M, Akiyama M, et al. Genome-wide association study of intracranial aneurysms identifies 17 risk loci and genetic overlap with clinical risk factors. *Nat Genet*. 2020;52:1303–1313. doi: 10.1038/s41588-020-00725-7
- Bakker MK, Ruigrok YM. Genetics of intracranial aneurysms. *Stroke*. 2021;52:3004–3012. doi: 10.1161/strokeaha.120.032621
- Vlak MH, Rinkel GJ, Greebe P, Algra A. Independent risk factors for intracranial aneurysms and their joint effect: a case-control study. *Stroke*. 2013;44:984–987. doi: 10.1161/strokeaha.111.000329
- Etmann N, Chang HS, Hackenberg K, de Rooij NK, Vergouwen MDI, Rinkel GJE, Algra A. Worldwide incidence of aneurysmal subarachnoid hemorrhage according to region, time period, blood pressure, and smoking prevalence in the population: a systematic review and meta-analysis. *JAMA Neurol*. 2019;76:588–597. doi: 10.1001/jamaneurol.2019.0006
- Algra AM, Lindgren A, Vergouwen MDI, Greving JP, van der Schaaf IC, van Doormaal TPC, Rinkel GJE. Procedural clinical complications, case-fatality risks, and risk factors in endovascular and neurosurgical treatment of unruptured intracranial aneurysms: a systematic review and meta-analysis. *JAMA Neurol*. 2019;76:282–293. doi: 10.1001/jamaneurol.2018.4165
- Lewis CM, Vassos E. Polygenic risk scores: from research tools to clinical instruments. *Genome Med*. 2020;12:44. doi: 10.1186/s13073-020-00742-5
- Lloyd-Jones LR, Zeng J, Sidorenko J, Yengo L, Moser G, Kemper KE, Wang H, Zheng Z, Magi R, Esko T, et al. Improved polygenic prediction by bayesian multiple regression on summary statistics. *Nat Commun*. 2019;10:5086. doi: 10.1038/s41467-019-12653-0
- Inouye M, Abraham G, Nelson CP, Wood AM, Sweeting MJ, Dudbridge F, Lai FY, Kaptoge S, Brozynska M, Wang T, et al. Genomic risk prediction of coronary artery disease in 480,000 adults: implications for primary prevention. *J Am Coll Cardiol*. 2018;72:1883–1893. doi: 10.1016/j.jacc.2018.07.079
- Abraham G, Malik R, Yonova-Doing E, Salim A, Wang T, Danesh J, Butterworth AS, Howson JMM, Inouye M, Dichgans M. Genomic risk score offers predictive performance comparable to clinical risk factors for ischaemic stroke. *Nat Commun*. 2019;10:5819. doi: 10.1038/s41467-019-13848-1
- Nieuwkamp DJ, Algra A, Veltuis BK, Rinkel GJ. Clinical and radiological heterogeneity in aneurysmal sub-arachnoid haemorrhage according to risk-factor profile. *Int J Stroke*. 2014;9:1052–1056. doi: 10.1111/ijvs.12274
- Slot EMH, Rinkel GJE, Algra A, Ruigrok YM. Patient and aneurysm characteristics in familial intracranial aneurysms. A systematic review and meta-analysis. *PLoS One*. 2019;14:e0213372. doi: 10.1371/journal.pone.0213372
- van 't Hof FN, Kurki MI, Kleinloog R, de Bakker PI, von und zu Fraunberg M, Jaaskelainen JE, Gaal EI, Lehto H, Kivisaari R, Laakso A, et al. Genetic risk load according to the site of intracranial aneurysms. *Neurology*. 2014;83:34–39. doi: 10.1212/WNL.0000000000000547
- Peymani A, Adams HH, Cremers LG, Krestin G, Hofman A, van Duijn CM, Uitterlinden AG, van der Lugt A, Vernooij MW, Ikram MA. Genetic determinants of unruptured intracranial aneurysms in the general population. *Stroke*. 2015;46:2961–2964. doi: 10.1161/strokeaha.115.010414
- Wand H, Lambert SA, Tamburro C, Iacocca MA, O'Sullivan JW, Sillari C, Kullo IJ, Rowley R, Dron JS, Brockman D, et al. Improving reporting standards for polygenic scores in risk prediction studies. *Nature*. 2021;591:211–219. doi: 10.1038/s41586-021-03243-6
- Morel S, Hostettler IC, Spinner GR, Bourcier R, Pera J, Meling TR, Alg VS, Houlden H, Bakker MK, Van't Hof F, et al. Intracranial aneurysm classifier using phenotypic factors: an international pooled analysis. *J Pers Med*. 2022;12:1410. doi: 10.3390/jpm12091410
- Can A, Castro VM, Ozdemir YH, Dagen S, Dligach D, Finan S, Yu S, Gainer V, Shadick NA, Savova G, et al. Alcohol consumption and aneurysmal subarachnoid hemorrhage. *Transl Stroke Res*. 2018;9:13–19. doi: 10.1007/s12975-017-0557-z
- Can A, Castro VM, Ozdemir YH, Dagen S, Yu S, Dligach D, Finan S, Gainer V, Shadick NA, Murphy S, et al. Association of intracranial aneurysm rupture with smoking duration, intensity, and cessation. *Neurology*. 2017;89:1408–1415. doi: 10.1212/wnl.0000000000004419
- Feigin VL, Rinkel GJ, Lawes CM, Algra A, Bennett DA, van Gijn J, Anderson CS. Risk factors for subarachnoid hemorrhage: an updated systematic review of epidemiological studies. *Stroke*. 2005;36:2773–2780. doi: 10.1161/01.str.0000190838.02954.e8
- Algra AM, Klijn CJ, Helmerhorst FM, Algra A, Rinkel GJ. Female risk factors for subarachnoid hemorrhage: a systematic review. *Neurology*. 2012;79:1230–1236. doi: 10.1212/WNL.0b013e31826aaace6
- Kim JH, Jeon J, Kim J. Lower risk of subarachnoid haemorrhage in diabetes: a nationwide population-based cohort study. *Stroke Vasc Neurol*. 2021;6:402–409. doi: 10.1136/svn-2020-000601

22. Lindbohm JV, Kaprio J, Korja M. Cholesterol as a risk factor for subarachnoid hemorrhage: a systematic review. *PLoS One*. 2016;11:e0152568. doi: 10.1371/journal.pone.0152568
23. Kurth T, Kase CS, Schurks M, Tzourio C, Buring JE. Migraine and risk of haemorrhagic stroke in women: prospective cohort study. *BMJ*. 2010;341:c3659–c3659. doi: 10.1136/bmj.c3659
24. Broderick JP, Viscoli CM, Brott T, Kernan WN, Brass LM, Feldmann E, Morgenstern LB, Wilterdink JL, Horwitz RI, Hemorrhagic Stroke Project I. Major risk factors for aneurysmal subarachnoid hemorrhage in the young are modifiable. *Stroke*. 2003;34:1375–1381. doi: 10.1161/01.STR.0000074572.91827.F4
25. Yang J, Lee SH, Goddard ME, Visscher PM. Gcta: a tool for genome-wide complex trait analysis. *Am J Hum Genet*. 2011;88:76–82. doi: 10.1016/j.ajhg.2010.11.011
26. Vlak MH, Algra A, Brandenburg R, Rinkel GJ. Prevalence of unruptured intracranial aneurysms, with emphasis on sex, age, comorbidity, country, and time period: a systematic review and meta-analysis. *Lancet Neurol*. 2011;10:626–636. doi: 10.1016/s1474-4422(11)70109-0
27. Zuurbier CCM, Molenberg R, Mensing LA, Wermer MJH, Juvela S, Lindgren AE, Jaaskelainen JE, Koivisto T, Yamazaki T, Uyttenboogaart M, et al. Sex difference and rupture rate of intracranial aneurysms: an individual patient data meta-analysis. *Stroke*. 2022;53:362–369. doi: 10.1161/STROKEAHA.121.035187
28. Kleinloog R, van 't Hof FN, Wolters FJ, Rasing I, van der Schaaf IC, Rinkel GJ, Ruigrok YM. The association between genetic risk factors and the size of intracranial aneurysms at time of rupture. *Neurosurgery*. 2013;73:705–708. doi: 10.1227/NEU.0000000000000078
29. Greving JP, Wermer MJ, Brown RD Jr, Morita A, Juvela S, Yonekura M, Ishibashi T, Torner JC, Nakayama T, Rinkel GJ, et al. Development of the phases score for prediction of risk of rupture of intracranial aneurysms: a pooled analysis of six prospective cohort studies. *Lancet Neurol*. 2014;13:59–66. doi: 10.1016/S1474-4422(13)70263-1
30. Turan N, Heider RA, Zaharieva D, Ahmad FU, Barrow DL, Pradilla G. Sex differences in the formation of intracranial aneurysms and incidence and outcome of subarachnoid hemorrhage: review of experimental and human studies. *Transl Stroke Res*. 2016;7:12–19. doi: 10.1007/s12975-015-0434-6
31. Krokstad S, Langhammer A, Hveem K, Holmen TL, Midthjell K, Stene TR, Bratberg G, Heggland J, Holmen J. Cohort profile: the hunt study, norway. *Int J Epidemiol*. 2013;42:968–977. doi: 10.1093/ije/dys095
32. Sandvei MS, Romundstad PR, Muller TB, Vatten L, Vik A. Risk factors for aneurysmal subarachnoid hemorrhage in a prospective population study: the hunt study in norway. *Stroke*. 2009;40:1958–1962. doi: 10.1161/STROKEAHA.108.539544
33. Bulik-Sullivan B, Finucane HK, Anttila V, Gusev A, Day FR, Loh PR, Duncan L, et al; ReproGen C, Psychiatric Genomics C, Genetic Consortium for Anorexia Nervosa of the Wellcome Trust Case Control C. An atlas of genetic correlations across human diseases and traits. *Nat Genet*. 2015;47:1236–1241. doi: 10.1038/ng.3406
34. Robinson MR, Kleinman A, Graff M, Vinkhuyzen AAE, Couper D, Miller MB, Peyrot WJ, Abdellaoui A, Zietsch BP, Nolte IM, et al. Genetic evidence of assortative mating in humans. *Nat Hum Behav*. 2017;1:0016.